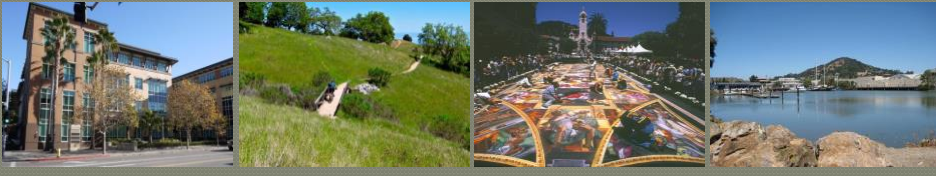


San Rafael General Plan 2040

Introduction and Overview

Presentation to
Parks and Recreation Commission
September 21, 2017



Context

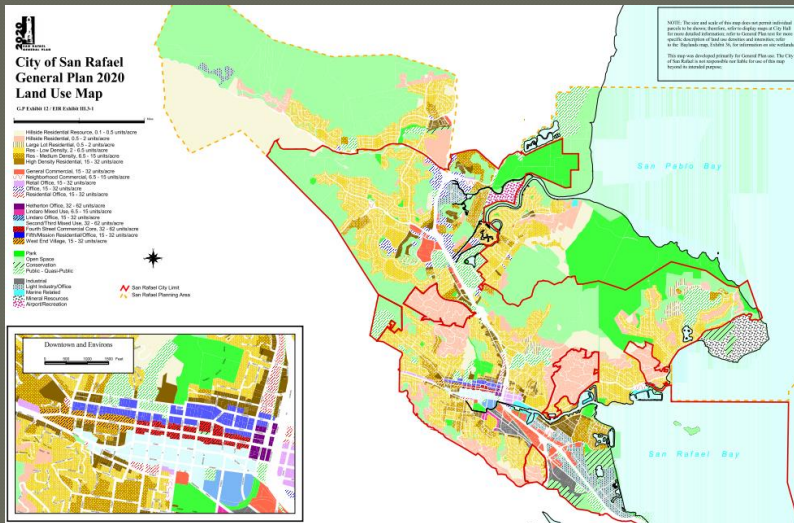
- Required of every City and County in California
- 20-year horizon
- Comprehensive in scope and area
- Focus on physical environment
- Update every 10-15 years
- Subject to CEQA



Planning Matters



General Plan 2020



We're Not Starting From Scratch

- **General Plan 2000** (1988)
 - **General Plan 2020** (2004)
 - **Housing Element** 2015-2023
 - **Recent Plans**
 - **Plans in Progress**
- *Climate Change Action Plan*
 - *Bicycle and Pedestrian Master Plan*
 - *Downtown Station Area Plan*
 - *Civic Center Station Area Plan*
 - *Downtown Parking/Wayfinding Study*
 - *Canal Transportation Plan*
 - *Canalfront Design Plan and Design Guidelines*
 - *Local Hazard Mitigation Plan*
 - *Bay Wave*

Plan "Elements"

Our Use of Land

- ❖ Land Use
- ❖ Housing
- ❖ Neighborhoods
- ❖ Community Design

Our Quality of Life

- ❖ Culture and Arts
- ❖ Parks and Recreation
- ❖ Safety
- ❖ Noise

Our Foundation

- ❖ Economic Vitality
- ❖ Circulation
- ❖ Infrastructure
- ❖ Governance
- ❖ Sustainability

Our Natural Resources

- ❖ Open Space
- ❖ Conservation
- ❖ Air and Water Quality

Parks and Recreation



Key Direction for Parks in GP 2020

- Provide 3 acres of parkland per 1,000 residents
 - Neighborhood parks (3 ac, serving 3,000 within ½ mile)
 - Community parks (20 ac, serving 10-30,000, within 3-5 miles)
- Plan provides specific recommendations for 17 parks and recommendations for new parks
- Priorities include
 - New sports fields
 - Community pool south of Puerto Suello Hill
 - Park and facility upgrades
 - Programs and facilities for seniors

Open Space Arts and Culture

Related Plan Elements

Schedule

Milestone	Timing
Appoint Steering Committee	Fall 2017
Evaluate Existing Plan and Data Needs	Fall 2017
Background Data Collection and Analysis	2018
Policy Discussion and Development	2018-19
Draft Plan and EIR	2018-19
Plan Adoption	Early 2020

Community Engagement

Steering Committee

- City Council approved creation of a 21-member Steering Committee to guide preparation of General Plan 2040
- Parks & Rec Commission listed as one of about a dozen specific organizations to be represented
- Nominate a member plus an alternate
- Application forms due by September 29

Committee Logistics

- Meetings 6-9 PM on 2nd Wednesdays
- Agenda packets sent one week prior to meeting
- Members need to read materials in advance and participate in discussion
- Represent the Commission's views and periodically report back
- Attend other workshops and serve as liaison to community

Community Engagement

- Steering Committee
- Stakeholder group meetings
- Workshops
- City Boards and Commissions
- City Council
- Mobile exhibits
- Interactive Website
- Social Media
- Public Hearings



Stay Involved!
www.sanrafael2040.org

Contact:
Barry.Miller@cityofsanrafael.org