



January progress pictures – CMU and Door Framing for Bay Room

PROJECT TEAM:

Owner: City of San Rafael
Project/Construction Manager: Kitchell, Sacramento, CA
Architect: Mary McGrath Architects, Oakland, CA
Contractor – Alten Construction, Inc.

For more information on the San Rafael Essential Facilities, projects please visit
<https://www.cityofsanrafael.org/departments/facilities>



City of San Rafael Station No. 52 Project

January 2018
Issue 6

Executive Summary

In November 2013, Measure E was passed by the voters of San Rafael extending for 20 years an existing 0.5% sales tax and adding 0.25% in an effort to set aside funds to begin to address the aging public safety facilities in San Rafael. In July 2015 the City Council approved a strategic plan for essential public safety facilities which updated the 2003 facility condition assessments, developed space needs of essential facilities, feasibility studies of improving existing and new public safety facilities, developed project budgets and funding plan, prioritized projects, and developed a phasing and implementation schedule. The plan recommended seven projects including a new public safety center housing both the police and fire departments as well as the rebuilding of Fire Station 51, 52 and 57. In addition, the plan recommended upgrades to the other fire stations for seismic safety and operational improvements. In late 2015, architect and construction management team began the design process for the Phase 1 projects, which included Fire Station 51, 52, 57 and the Public Safety Center. **This report provides a current update on the progress of Fire Station 52 located on the corner of 3rd Street and Union.**

Project Description/Scope

The new 10,973 square foot, two-story fire station, will remain located at 210 Third Street, San Rafael, California, and will house five on-duty fire fighters. The new station is designed to accommodate six on-duty personnel should additional staffing be required to better serve the community. The core elements of the new station include three drive-through apparatus bays, apparatus support spaces, public lobby, accessible restroom, office, kitchen, dining, dayroom, laundry room, private sleeping quarters, unisex restrooms, mechanical, electrical, communications rooms and staff parking. Other notable site/adjacent improvements include a second new structure will be a four-story training tower. The new 3,322 square foot, 46' high, pre-engineered building will be located at the south/east corner of the site and will provide a variety of training scenario opportunities, not only for SRFD, but also for other neighboring fire departments. Finally, the third new building on the site will be a 1,297 square foot, 24-person, training classroom. The facility will serve as a training academy by day and will be utilized in the evening for certification training/meetings, CPR classes, and other fire prevention functions.

Project Progress

During the month of January, Alten Construction continued to work on the Fire Station Building; the Classroom Building and the retaining wall/ bio-retention on the North-East side of the site. At the Fire Station Building, contractor continued with installation of Scaffolding, wood framing at the bay room and the CMU Block. The CMU Block is currently installed up to the second floor along with rough electrical conduits and electrical boxes. Steel beams are also currently being installed. At the Classroom Building, Contractor continued with the wood framing, door jams and all the electrical conduits. They also took the initiative, placing plastic on the roof top to protect it. At the retaining wall on the north east side of the site, Contractor poured, removed the forms and backfilled the bio-retention walls. All inspection and testing by the City Inspector, Special Inspector, Structural Engineer, Soils Engineer and the IOR have been performed and approved.

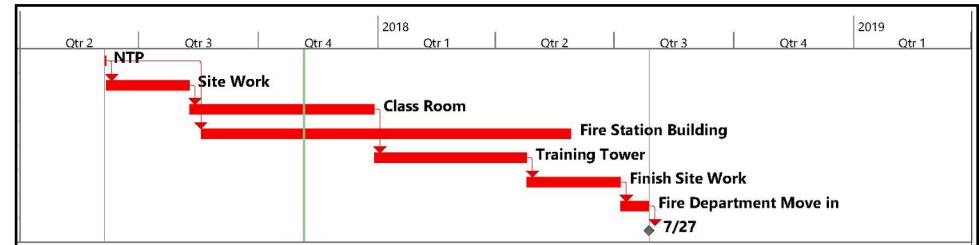


January progress picture – Classroom Roof Protection and Retaining wall at NE end of site



January progress pictures – Fire Station CMU Installation and Scaffolding

Project Schedule Information



Project Budget Information

	Budgeted/Bid Costs	Expensed to Date
Construction Hard Costs	\$10,684,170	\$3,215,275
Project Soft Costs	\$2,852,973	\$1,636,185
Total Project Costs	\$13,537,143	\$4,851,460

Project Activities this Month

- ▶ Continued with the Fire Station Building Scaffolding and installation of the CMU Block.
- ▶ Electrician continued with the installation of electrical conduits within the CMU cells.
- ▶ Contractor Continued with framing, door jams and roofing installation for the Classroom.
- ▶ Removal of the forms, backfilled around the bio-retention walls.

Anticipated February Activities

- ▶ Continue placement of the Fire Station CMU walls above the 2-floor. Receive Steel.
- ▶ Commence all on site utilities.
- ▶ Commence Off-Site sewer and storm utilities
- ▶ Initiate the excavation of the tower foundation.
- ▶ Continuation of the Site Retaining walls
- ▶ Finalize determination relocation of guy wires.