



City of San Rafael Public Safety Center

February 2018
Issue 1

Executive Summary

In November 2013, Measure E was passed by the voters of San Rafael extending for 20 years an existing 0.5% sales tax and adding 0.25% in an effort to set aside funds to begin to address the aging public safety facilities in San Rafael. In July 2015 the City Council approved a strategic plan for essential public safety facilities which updated the 2003 facility condition assessments, developed space needs of essential facilities, feasibility studies of improving existing and new public safety facilities, developed project budgets and funding plan, prioritized projects, and developed a phasing and implementation schedule. The plan recommended seven projects including a new public safety center housing both the police and fire departments as well as the rebuilding of Fire Station 51, 52 and 57. In addition, the plan recommended upgrades to the other fire stations for seismic safety and operational improvements. In late 2015, architect and construction management team began the design process for the Phase 1 projects, which included Fire Station 51, 52, 57 and the Public Safety Center.

This report provides a current update on the progress of Public Safety Center located on along 5th Avenue between C-Street and D-Street.

Project Description/Scope

The proposed 43,500 sf facility includes a 17,000 sf basement and apparatus parking area and features a shared lobby which reaches out tower the corner of D St. and 5th Ave. The new facility will house core facilities including kitchen, dining, dayroom, restrooms, fitness room and apparatus support spaces. This facility has been designed to accommodate fire dept, paramedics and police department personnel. Other key elements for the facility include the following elements: Conference Rooms, Emergency Operations Center (EOC)/ training room, break rooms, sleeping rooms, lobby and public restrooms, men's and women's staff toilets, all infrastructure support areas including computer rooms, electrical rooms. Etc. Other notable items is basement level contains on-site parking for marked patrol vehicles and specialty PD units, the PD holding facility, evidence storage and processing functions and storage areas for the motors and bicycle patrol units. It is a secure area with a two-way access ramp on D St. And a second exit to C St. There will also be an emergency operations center that includes seating for 60 and training at tables for 24 with support areas for the emergency management functions. This emergency operation center will also function as the facilities training classroom and as a community meeting space



February progress picture – installation of the shoring beams and

PROJECT TEAM:

Owner: City of San Rafael
Project/Construction Manager: Kitchell, Sacramento, CA
Architect: Mary McGrath Architects, Oakland, CA
Contractor – Alten Construction, Inc.

For more information on the San Rafael Essential Facilities, projects please visit
<https://www.cityofsanrafael.org/departments/facilities>

Project Progress

During the month of February, Alten Construction was issued the NTP (02/05) initiating the start of construction for Public Safety Center. Contractor continued with mobilization by installing and setting up the construction trailers and storage bins. While taking on these duties, contractor's crews proceeded with removing and replacing the temporary fence to the new project limits this, included the sound blankets along Via Sessi. Contractor reviewed and modified the existing BMP's per the projects approved SWPPP. Contractor then proceeded with preparing the site for the installation of the shoring system. Upon completion of the shoring system contaminated soils were encountered, area was identified and isolated allowing the grading activities and hauling of the material to start. Currently contractor activities have slowed down due to the rain season once cleared hauling of the material and grading of the basement will re-start. In addition the review and processing of submittals and Request for Information (RFI's) continue in high volume/pace.



February progress pictures – Over excavation of site and protecting area from rain.

Project Activities this Month

- ▶ Completion of the mobilization phase.
- ▶ Site surveying.
- ▶ Installation of BMP's.
- ▶ Installation of the shoring system.
- ▶ Grading activities and over-excavation of the site.
- ▶ Haul off of material.
- ▶ Excavation of footings for the basement.
- ▶ Dewatering site.

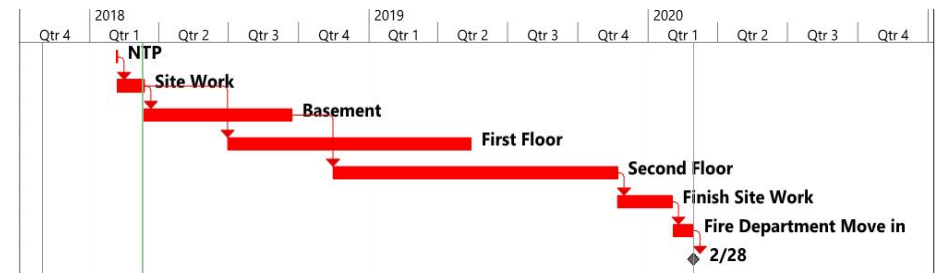
Anticipated March Activities

- ▶ Hauling off material.
- ▶ Grading activities and over-excavation of the site.
- ▶ Dewatering.
- ▶ Excavation of footings.
- ▶ Underground utilities to basement.
- ▶ Continue with site survey.



February progress picture – Overview of project site

Project Schedule Information



Project Budget Information

	Budgeted/Bid Costs	Expensed to Date (*)
Construction Hard Costs	\$37,030,000	\$544,180
Project Soft Costs	\$9,987,266	\$4,569,132
Total Project Costs	\$47,017,266	\$5,113,312

(*) cost data based on previous report projections which exceeded the period GL. Next month's report will show alignment with the GL Actual Cost.