



City of San Rafael Public Safety Center

March 2018
Issue 2

Executive Summary

In November 2013, Measure E was passed by the voters of San Rafael extending for 20 years an existing 0.5% sales tax and adding 0.25% in an effort to set aside funds to begin to address the aging public safety facilities in San Rafael. In July 2015 the City Council approved a strategic plan for essential public safety facilities which updated the 2003 facility condition assessments, developed space needs of essential facilities, feasibility studies of improving existing and new public safety facilities, developed project budgets and funding plan, prioritized projects, and developed a phasing and implementation schedule. The plan recommended seven projects including a new public safety center housing both the police and fire departments as well as the rebuilding of Fire Station 51, 52 and 57. In addition, the plan recommended upgrades to the other fire stations for seismic safety and operational improvements. In late 2015, architect and construction management team began the design process for the Phase 1 projects, which included Fire Station 51, 52, 57 and the Public Safety Center.

This report provides a current update on the progress of Public Safety Center located on along 5th Avenue between C-Street and D-Street.

Project Description/Scope

The proposed 43,500 sf facility includes a 17,000 sf basement and apparatus parking area and features a shared lobby which reaches out tower the corner of D St. and 5th Ave. The new facility will house core facilities including kitchen, dining, dayroom, restrooms, fitness room and apparatus support spaces. This facility has been designed to accommodate Fire Men, Paramedics and police department personnel. Other key elements for the facility include the following elements: Conference Rooms, Emergency Operations Center (EOC), training room, break rooms, sleeping rooms, lobby and public restrooms, men's and women's staff toilets, all infrastructure support areas including computer rooms, electrical rooms. Etc. Other notable items is basement level contains on-site parking for marked patrol vehicles and specialty PD units, the PD holding facility, evidence storage and processing functions and storage areas for the motors and bicycle patrol units. It is a secure area with a two-way access ramp on D St. And a second exit to C St. There will also be an emergency operations center that includes seating for 60 and training at tables for 24 with support areas for the emergency management functions. This emergency operation center will also function as the facilities training classroom and as a community meeting space



March progress picture – installation of the baker tanks and covering of the stockpiles

PROJECT TEAM:

Owner: City of San Rafael
Project/Construction Manager: Kitchell, Sacramento, CA
Architect: Mary McGrath Architects, Oakland, CA
Contractor – Alten Construction, Inc.

For more information on the San Rafael Essential Facilities, projects please visit
<https://www.cityofsanrafael.org/departments/facilities>

Project Progress

During the month of March, the weather turned for the worst raining constantly pushing the site to its limits forcing the team to act quickly. An additional baker tanks was brought to the site and the purchase of pumps was required to help contain the rain water on site. The pumps had to be placed inside perforated trash cans with gravel. This system allowed clean water (not mucky water) to be pumped into the baker tanks, permitting discharging into the sewer system. The Contractor required a labor on site during the day to assist with continues pumping of the rain water, allowing for rain water to store on site during the nights. Contractor reviewed and modified the existing BMP's constantly to mitigate that no water leave the site. Currently contractor activities have slowed down due to the rain season and contaminated soils on site, once rain stops and the contaminated soils are cleared hauling of the material and grading of the basement will resume. In addition the review and processing of submittals and Request for Information (RFI's) continue in high volume/pace.

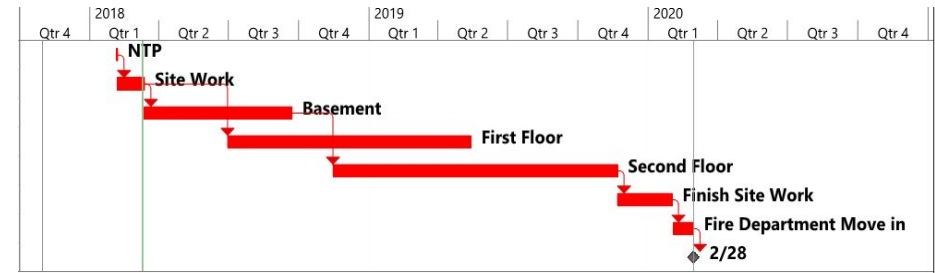


March progress pictures – pumping system of the site.



March progress picture – Overview of project site during a rainy day

Project Schedule Information



Project Budget Information

	Budgeted/Bid Costs	Expensed to Date
Construction Hard Costs	\$37,030,000	\$2,384,267
Project Soft Costs	\$9,987,266	\$4,890,251
Total Project Costs	\$47,017,266	\$7,274,518

Project Activities this Month

- ▶ Continue of equipment mobilization.
- ▶ Site surveying.
- ▶ Installation of BMP's.
- ▶ Grading activities and over-excavation of the site.
- ▶ Haul off of material.
- ▶ Excavation of footings at the basement level.
- ▶ Dewatering of the site.

Anticipated May Activities

- ▶ Hauling off material.
- ▶ Grading activities and over-excavation of the site.
- ▶ Dewatering.
- ▶ Excavation of footings.
- ▶ Underground utilities to basement.
- ▶ Continue with site survey.