



#### PROJECT TEAM:

Owner: City of San Rafael

Project/Construction Manager: Kitchell, Sacramento, CA

Architect: Mary McGrath Architects, Oakland, CA

Contractor – Alten Construction, Inc.

For more information on the San Rafael Essential Facilities, projects please visit

<https://www.cityofsanrafael.org/departments/facilities>



## City of San Rafael Station No. 57 Project

April 2018  
Issue 9

### Executive Summary

In November 2013, Measure E was passed by the voters of San Rafael extending for 20 years an existing 0.5% sales tax and adding 0.25% in an effort to set aside funds to begin to address the aging public safety facilities in San Rafael. In July 2015 the City Council approved a strategic plan for essential public safety facilities which updated the 2003 facility condition assessments, developed space needs of essential facilities, feasibility studies of improving existing and new public safety facilities, developed project budgets and funding plan, prioritized projects, and developed a phasing and implementation schedule. The plan recommended seven projects including a new public safety center housing both the police and fire departments as well as the rebuilding of Fire Station 51, 52 and 57. In addition, the plan recommended upgrades to the other fire stations for seismic safety and operational improvements. In late 2015, architect and construction management team began the design process for the Phase 1 projects, which included Fire Station 51, 52, 57 and the Public Safety Center.

**This report provides a current update on the progress of Fire Station 57 located on Civic Center Drive.**

### Project Description/Scope

The new 9,855 square foot, two-story fire station, will remain located at 3530 Civic Center Drive in San Rafael, California, and will house five on-duty fire fighters/paramedics. The new station is designed to accommodate six on-duty personnel should additional staffing be required to better serve the community. The core elements of the new station include three drive-through apparatus bays, apparatus support spaces, public lobby, accessible restroom, office, kitchen, dining, dayroom, laundry room, private sleeping quarters, unisex restrooms, mechanical, electrical, communications rooms and staff parking. Other notable site/adjacent improvements include access aprons and sidewalk replacement along Civic Center Drive, median(s) in front of the station on Civic Center Drive will be modified to align with the new apparatus bay location, a "keep clear" zone will be striped in front of the apparatus bay apron on Civic Center Drive. Prior to the commencement of demolition activity, and in order to maintain uninterrupted service to the community, personnel and equipment from Fire Station 57 were relocated to Fire Station 53 at 30 Joseph Court, San Rafael, California. Modest modifications to Fire Station 53 were implemented as part of the relocation effort.



## Project Progress

During the month of April, Alten Construction completed the installation of under-slab rough electrical and plumbing elements, and also completed the placement of under-slab rock and vapor barrier at the Living Quarters. CMU installation continued at the Apparatus Bay and Utility Rooms. Selected steel elements (ledgers and columns) and steel door frames were installed in conjunction with CMU activities. Continued management of site conditions occurred throughout the first half of the month.

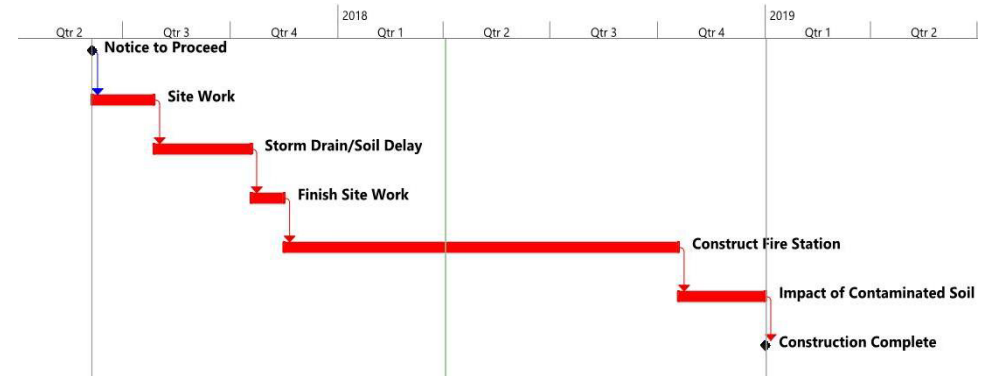


April progress pictures for Fire Station 57



April progress pictures for Fire Station 57

## Project Schedule Information



## Project Budget Information

| FS 57                      |                     |                    |
|----------------------------|---------------------|--------------------|
| Alten Constr. Hard Cost    | \$9,082,292         | \$2,195,428        |
| CO 002                     | \$114,464           |                    |
| CO 004                     | \$223,071           |                    |
| Contingency                | \$454,115           | \$156,997          |
| DEMO                       | \$155,401           |                    |
| Soft Cost - Design & Admin | \$2,462,135         | \$1,771,530        |
| <b>TOTAL</b>               | <b>\$12,491,478</b> | <b>\$4,123,955</b> |

### Project Activities this Month

- ▶ Completed under-slab rough electrical and plumbing
- ▶ Completed install of under slab rock and vapor barrier (Living Quarters)
- ▶ Continued CMU installation (Apparatus Bay and Utility Rooms)
- ▶ Installation of selected steel elements (ledgers and columns) in conjunction with CMU installation
- ▶ Installation of exterior steel door frames
- ▶ Continued management of site conditions due to adverse weather

### Anticipated May Activities

- ▶ Completion of slab on grade (Office and Living Quarters)
- ▶ Completed CMU installation (Utility Rooms)
- ▶ Continued CMU installation (Apparatus Bay & Living Quarters)
- ▶ Continued installation of steel elements (ledgers and columns for Living Quarters) in conjunction with CMU installation
- ▶ Complete installation of Apparatus Bay door opening supports
- ▶ Installation of window opening supports