



City of San Rafael Public Safety Center

April 2018
Issue 3



April progress picture – over-excavation of the contaminated material and unsuitable areas

PROJECT TEAM:

Owner: City of San Rafael
Project/Construction Manager: Kitchell, Sacramento, CA
Architect: Mary McGrath Architects, Oakland, CA
Contractor – Alten Construction, Inc.

For more information on the San Rafael Essential Facilities, projects please visit
<https://www.cityofsanrafael.org/departments/facilities>

Executive Summary

In November 2013, Measure E was passed by the voters of San Rafael extending for 20 years an existing 0.5% sales tax and adding 0.25% in an effort to set aside funds to begin to address the aging public safety facilities in San Rafael. In July 2015 the City Council approved a strategic plan for essential public safety facilities which updated the 2003 facility condition assessments, developed space needs of essential facilities, feasibility studies of improving existing and new public safety facilities, developed project budgets and funding plan, prioritized projects, and developed a phasing and implementation schedule. The plan recommended seven projects including a new public safety center housing both the police and fire departments as well as the rebuilding of Fire Station 51, 52 and 57. In addition, the plan recommended upgrades to the other fire stations for seismic safety and operational improvements. In late 2015, architect and construction management team began the design process for the Phase 1 projects, which included Fire Station 51, 52, 57 and the Public Safety Center.

This report provides a current update on the progress of Public Safety Center located on along 5th Avenue between C-Street and D-Street.

Project Description/Scope

The proposed 43,500 sf facility includes a 17,000 sf basement and apparatus parking area and features a shared lobby which reaches out tower the corner of D St. and 5th Ave. The new facility will house core facilities including kitchen, dining, dayroom, restrooms, fitness room and apparatus support spaces. This facility has been designed to accommodate Fire Men, Paramedics and police department personnel. Other key elements for the facility include the following elements: Conference Rooms, Emergency Operations Center (EOC), training room, break rooms, sleeping rooms, lobby and public restrooms, men's and women's staff toilets, all infrastructure support areas including computer rooms, electrical rooms. Etc. Other notable items is basement level contains on-site parking for marked patrol vehicles and specialty PD units, the PD holding facility, evidence storage and processing functions and storage areas for the motors and bicycle patrol units. It is a secure area with a two-way access ramp on D St. And a second exit to C St. There will also be an emergency operations center that includes seating for 60 and training at tables for 24 with support areas for the emergency management functions. This emergency operation center will also function as the facilities training classroom and as a community meeting space

Project Progress

During the month of April, the weather cleared up allowing Alten to initiate the off haul of the clean material, contaminated material and prepare the building pads for certification. Hauling off of the clean material was a success hauling off approximately 2,500 cubic yards to the airport. During the excavation of the contaminated material with the help of EBA limits of the contaminated were established allowing to remove all the material within a day. Upon completion of the haul off and proof rolling of the building pads with a dump truck a few areas were discovered to be unsuitable requiring over-excavation, airing, mixing with dry material and re-working. Once the areas were re-worked a minimum of 90% compaction were achieved throughout, allowing the building pad to pass and be certified. In addition the review and processing of submittals and Request for Information (RFI's) continue in high volume/pace.

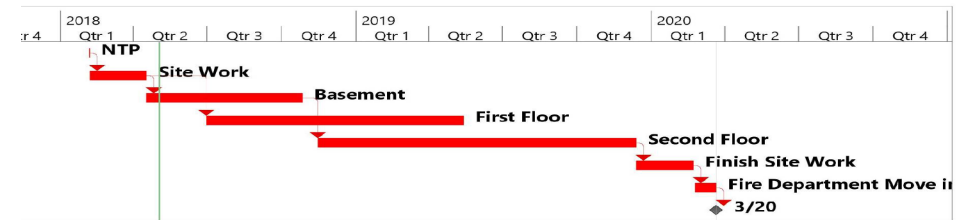


April progress pictures – using wheel for compaction of over excavated areas



April progress picture – Overview of project site during haul off of the over excavated material

Project Schedule Information



Note: Contractor schedule shows work is behind schedule/ February 28, 2020 is the original completion date

Project Budget Information

	Budgeted/Bid Costs	Expensed to Date
Constr. Hard Cost (Incl CO 1 Fuel)	\$34,039,000	\$1,907,207
Remaining Construction Contingency	\$1,749,000	
Early Demolition	\$842,000	\$873,314
Project Soft Costs - Design & Admin	\$9,987,266	\$5,070,336
Total Project Costs	\$46,617,266	\$7,850,857

Project Activities this Month

- ▶ Continue of equipment mobilization.
- ▶ Site surveying.
- ▶ Installation of BMP's.
- ▶ Grading activities and over-excavation of the site.
- ▶ Haul off of material.
- ▶ Excavation of unsuitable materials and re-compact.
- ▶ Dewatering of the site.

Anticipated May Activities

- ▶ Excavation of elevator pits.
- ▶ Winterize bottom of elevator pits.
- ▶ Pour elevator pit walls.
- ▶ Excavation of footing at basements level.
- ▶ Continuing with dewatering.
- ▶ Underground utilities to basement.
- ▶ Continue with site survey.
- ▶ Shotcrete test panels.