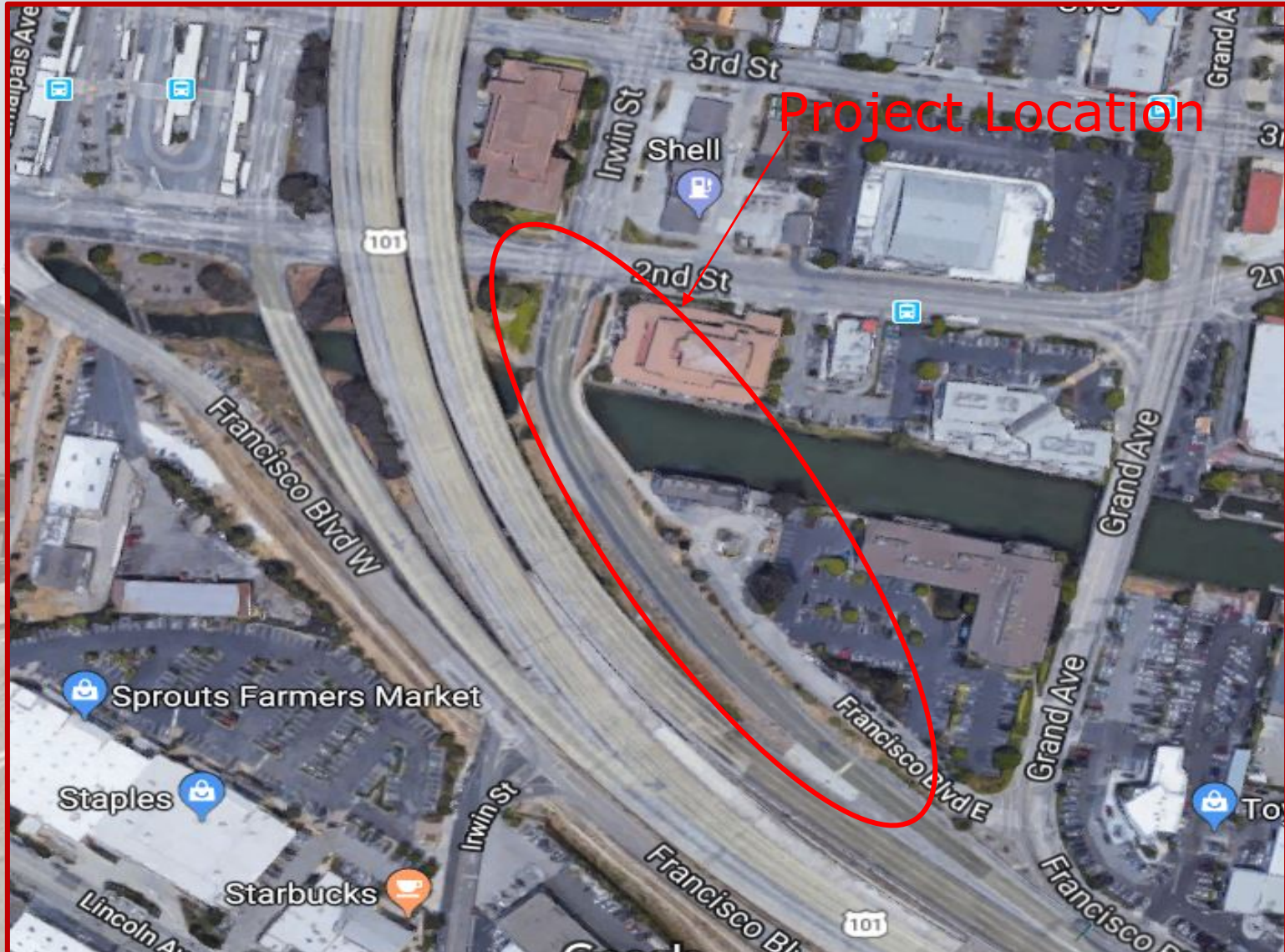
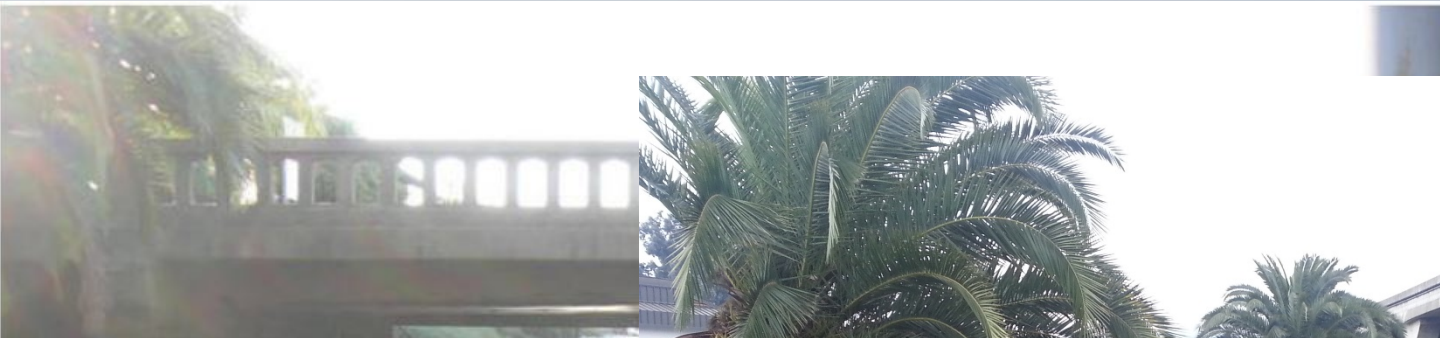


SAN RAFAEL HARBOR BRIDGE REPLACEMENT PROJECT (US 101 OFF RAMP TO 2ND STREET, SAN RAFAEL)

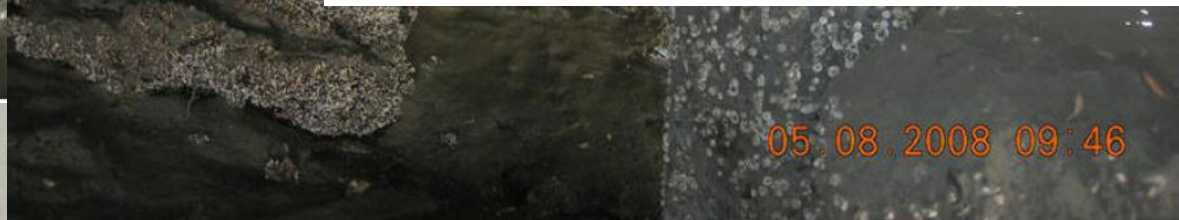




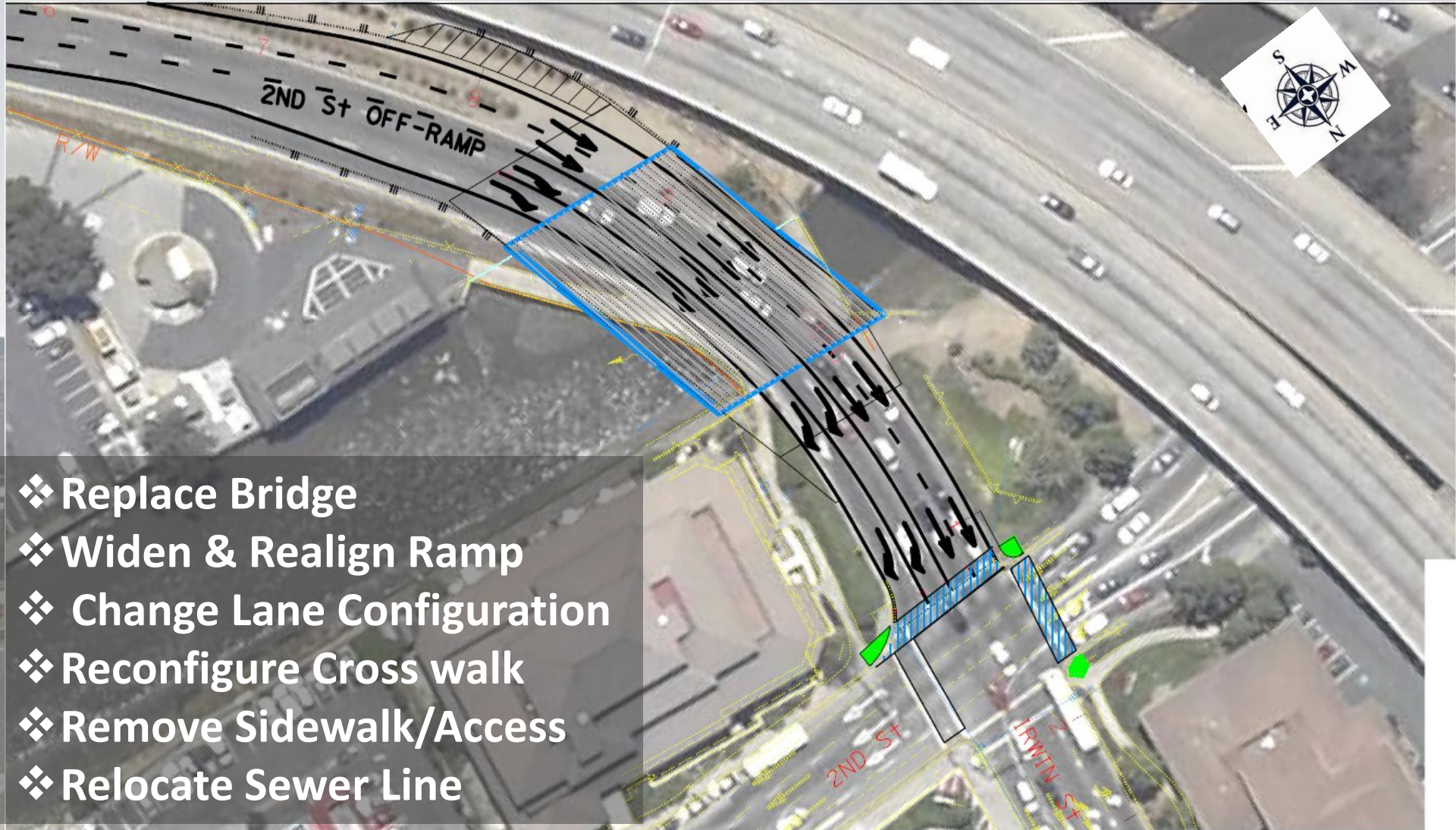
Project Need & Purpose



Project Need and Purpose (Bridge History & Condition)



Project Improvements

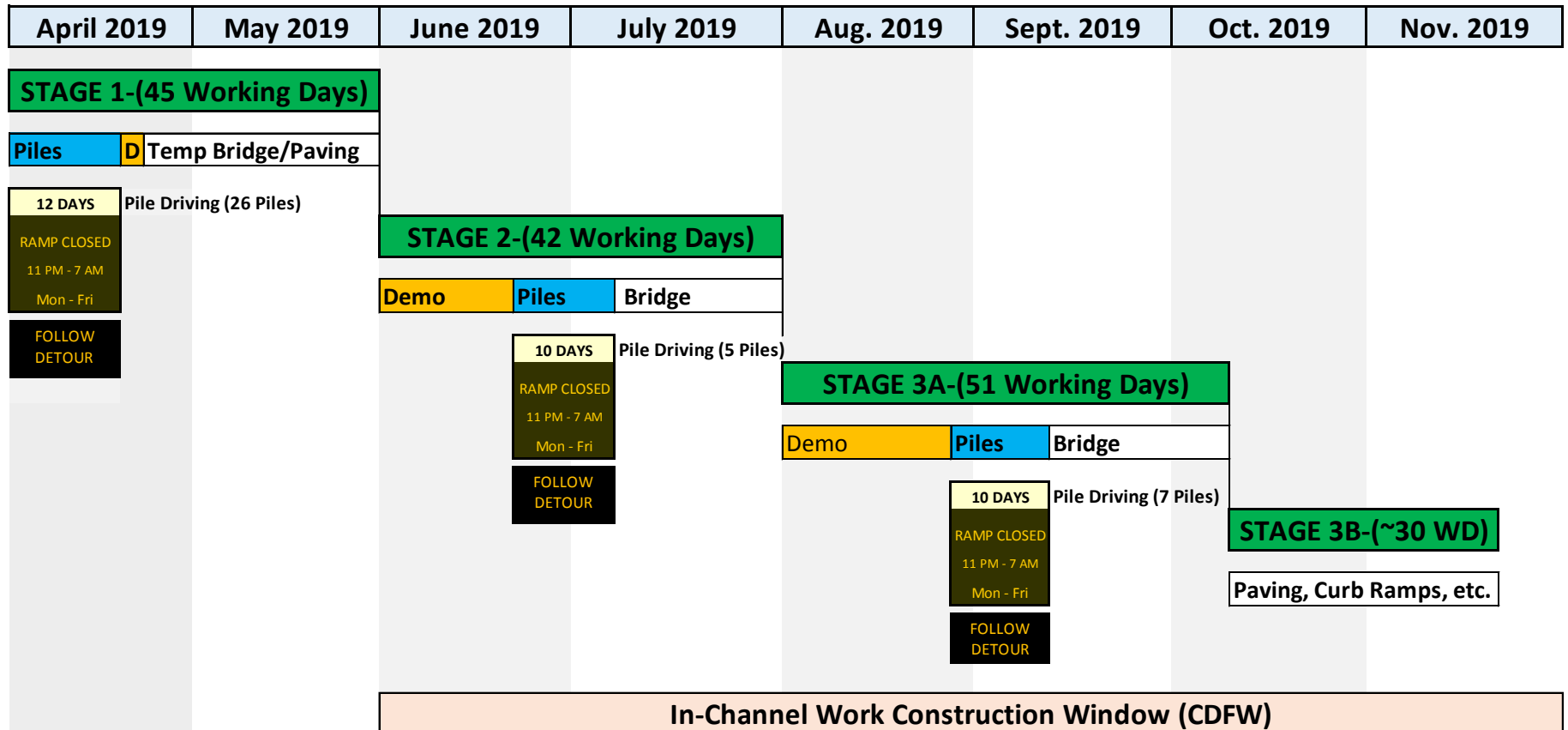




Project Schedule

Complete Design:	June 2018
Construction Allocation:	October 2018
Advertise Contract:	November 2018
Award Contract:	February 2019

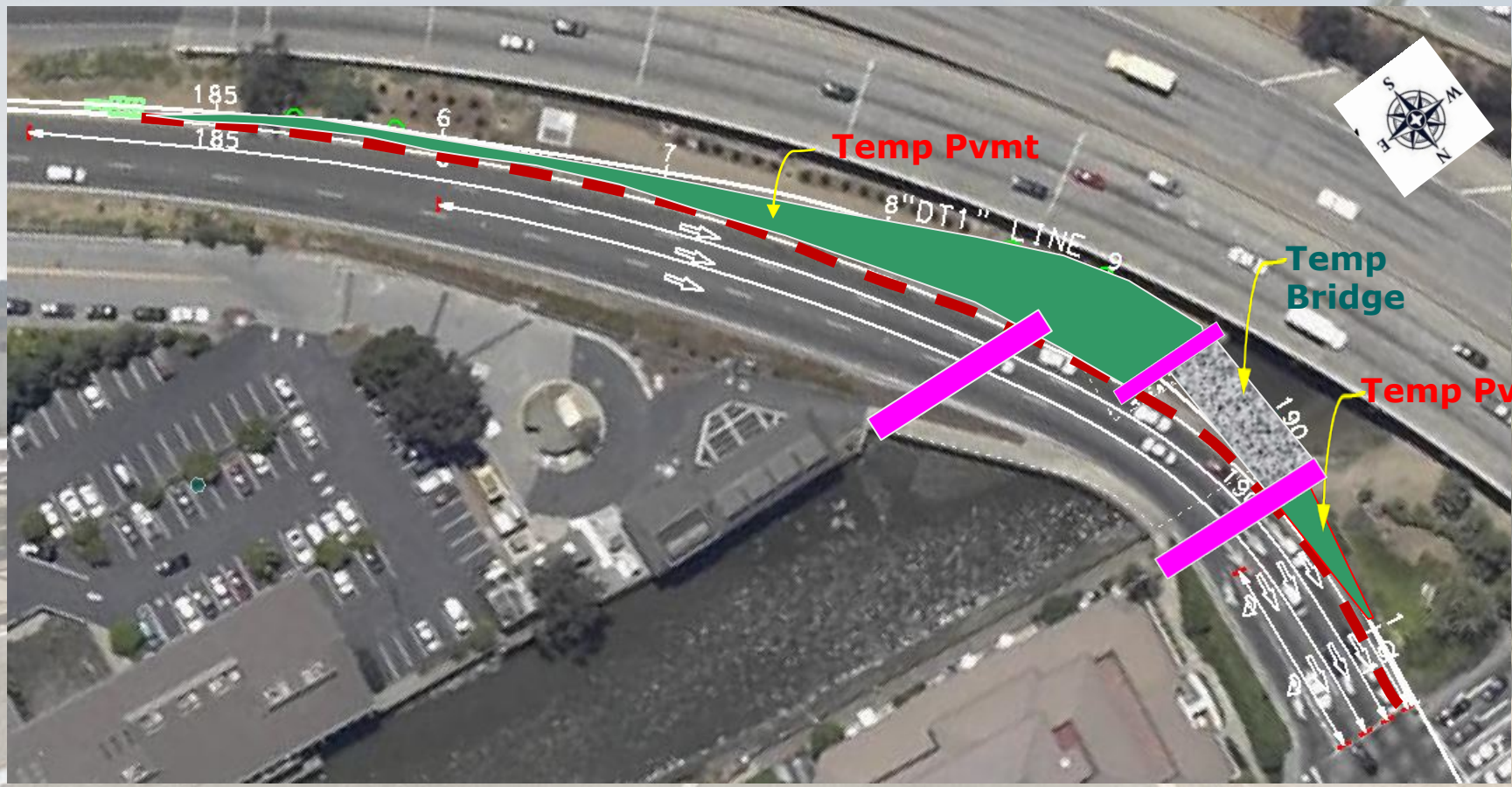
Construction & Lane Closure Schedule





Stage Construction and Traffic Handling

Stage 1





Stage Construction and Traffic Handling

Stage 2





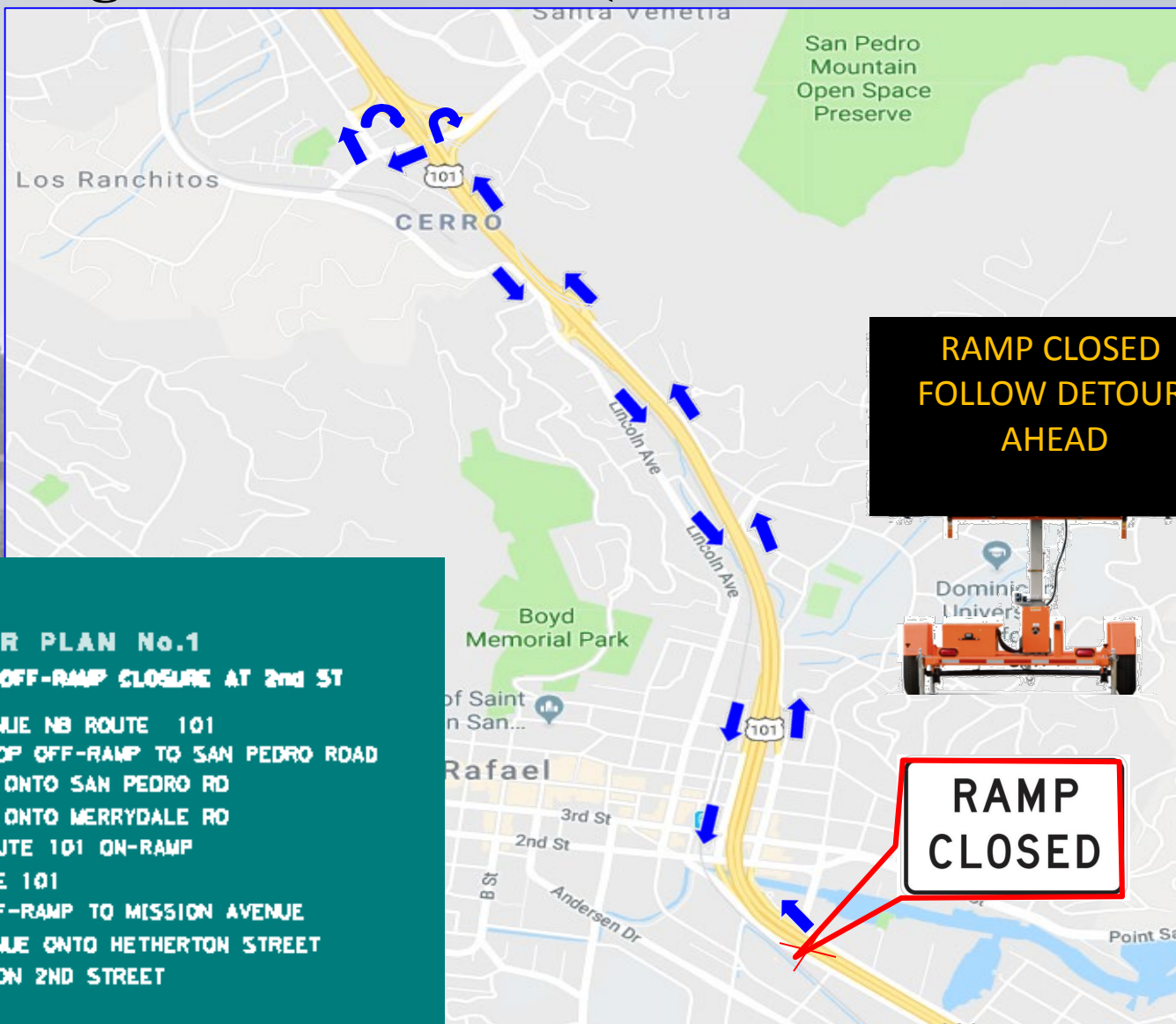
Construction and Traffic Handling Stage 3A





Detour 1

Night Time Closure (11:00 PM to 7:00 AM)



DETOUR PLAN No.1

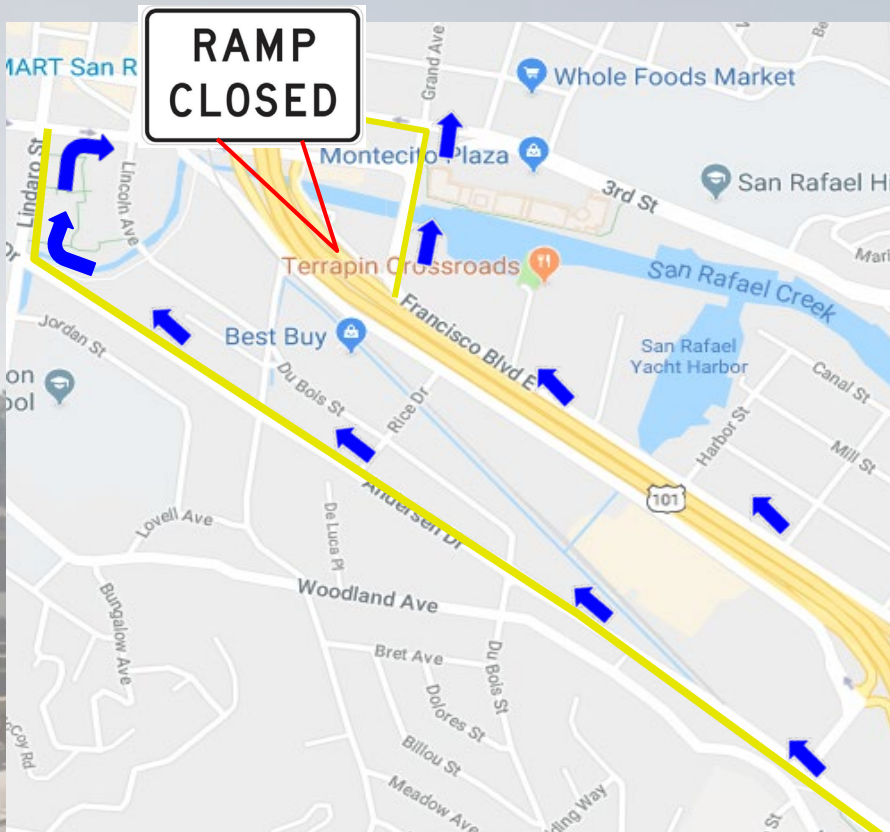
NB RTE 101 OFF-RAMP CLOSURE AT 2nd ST

- CONTINUE NB ROUTE 101
- NB LOOP OFF-RAMP TO SAN PEDRO ROAD
- RIGHT ONTO SAN PEDRO RD
- RIGHT ONTO MERRYDALE RD
- SB ROUTE 101 ON-RAMP
- SB RTE 101
- SB OFF-RAMP TO MISSION AVENUE
- CONTINUE ONTO HETHERTON STREET
- LEFT ON 2ND STREET



Detour 2

Night Time Closure (11:00 PM to 7:00 AM)



DETOUR PLAN No. 2

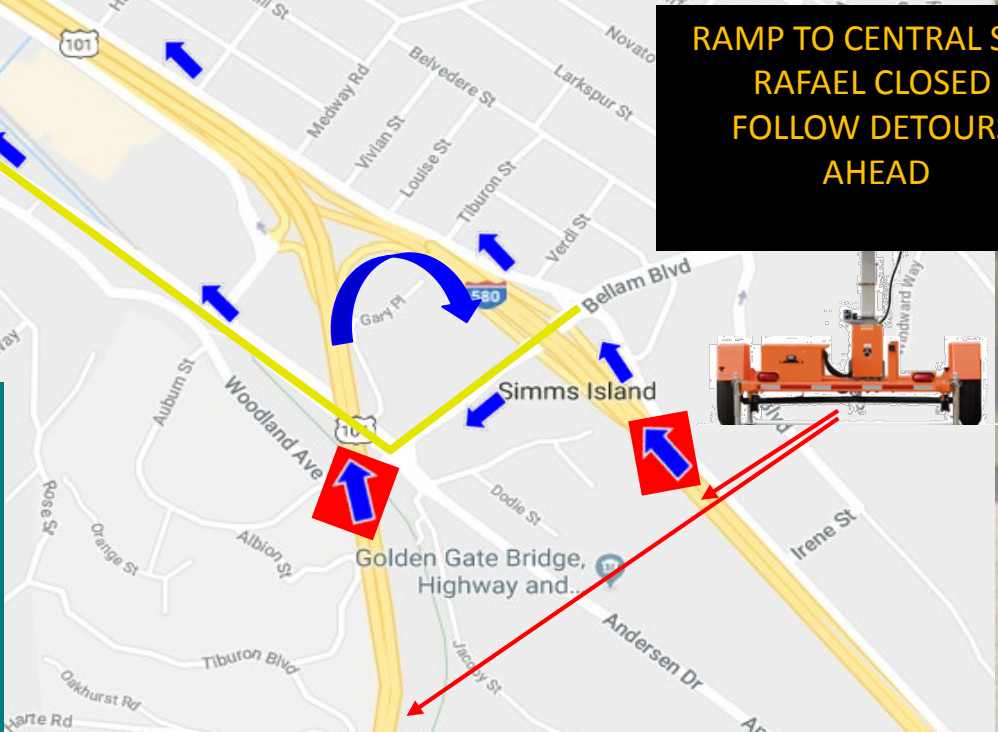
NB RTE 101 OFF-RAMP CLOSURE AT 2nd ST

EXIT FRANCISCO BLVD.
RIGHT/LEFT ONTO BELLAM BLVD
LEFT ONTO FRANCISCO BLVD. EAST
RIGHT ONTO GRAND AVE
LEFT ONTO 3rd ST

RAMP TO CENTRAL SAN RAFAEL CLOSED FOLLOW DETOURS AHEAD

OR

EXIT FRANCISCO BLVD
LEFT/RIGHT ONTO BELLAM BLVD
RIGHT ONTO ANDERSEN DR
RIGHT ONTO LINDARO ST
RIGHT ONTO 2ND ST



Pedestrian Detour





Construction Noise



Construction Activity	Site #1				Site #2				Site #3				Site #4			
	Ambient		Construction		Ambient		Construction		Ambient		Construction		Ambient		Construction	
	Leq	Lmax	Leq	Lmax	Leq	Lmax	Leq	Lmax	Leq	Lmax	Leq	Lmax	Leq	Lmax	Leq	Lmax
Night - Pile Driving	64	84	64	69	64	86	66	70	70	90	66	70	60	79	61	65
Day - Sheet Pile	72	94	65	69	69	92	67	70	74	94	66	70	69	88	62	65
Night - Pile Driving	64	84	63	69	64	86	63	69	70	90	64	70	60	79	60	65
Day - Demo	72	94	65	69	69	92	67	70	74	94	66	70	69	88	62	65

QUESTIONS?