

2015 IBC Exit Systems



Objectives

Upon completion, participants will be better able to:

- Determine those means of egress components that are defined as “exits”
- Identify where exit elements are required
- Identify the specific technical criteria for exits
- Describe the regulation of the exit discharge system



2015 IBC Exit Systems

3

Course Description

- This seminar addresses the provisions of Chapter 10 of the 2015 *International Building Code*® (IBC®) regarding specific aspects of the means of egress, those components regulated as “exits.”



2015 IBC Exit Systems

2

Course Overview

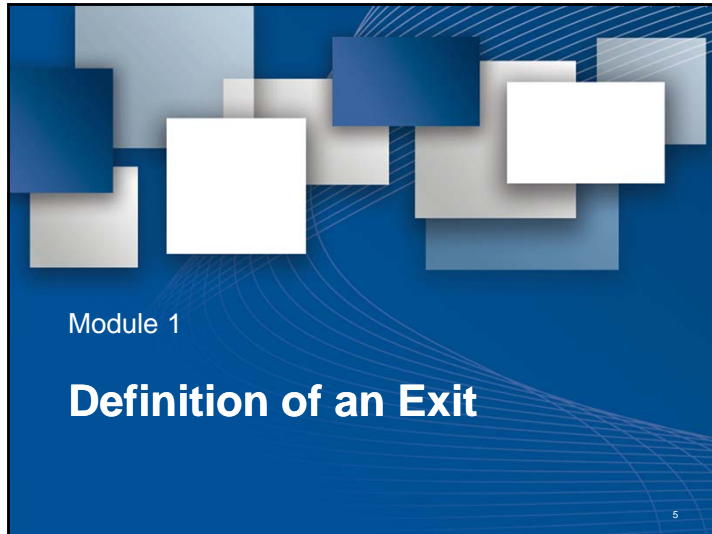
- **Module 1 – Definition of an Exit**
- **Module 2 – Use of Exit Components**
- **Module 3 – Specifics of Exit Components**
- **Module 4 – Exit Discharge**



2015 IBC Exit Systems

4

2015 IBC Exit Systems



Module 1

Definition of an Exit

5

Definition of Exit

- The means of egress is defined as “a continuous and unobstructed path of vertical and horizontal egress travel from any occupied portion of a building or structure to a public way. A means of egress consists of three separate and distinct parts: the exit access, the exit and the exit discharge.



2015 IBC Exit Systems

7

Definition of Exit

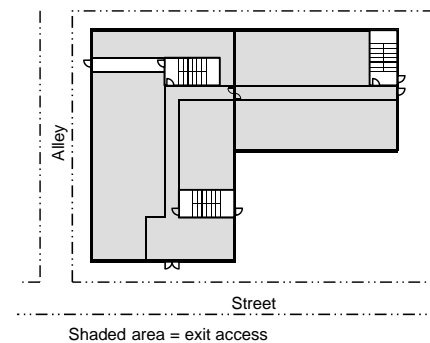
- The term “exit” is used in the code to describe one of three parts of the means of egress system.
- The means of egress includes:
 - Exit access
 - Exit
 - Exit discharge



2015 IBC Exit Systems

6

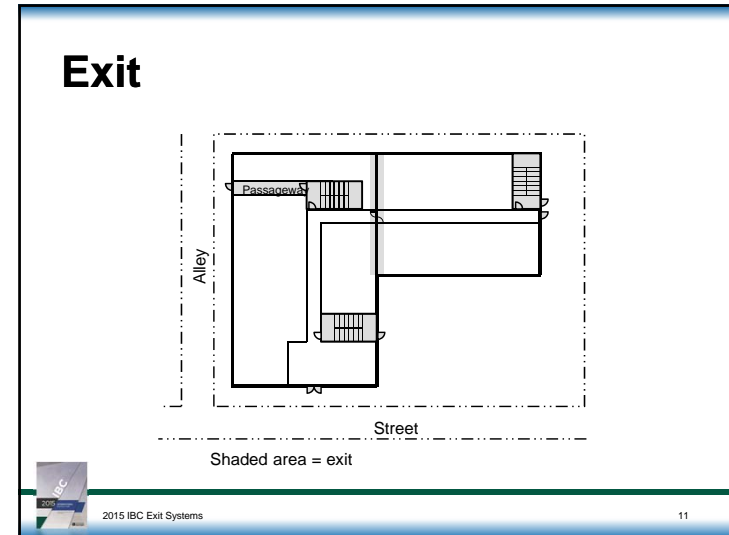
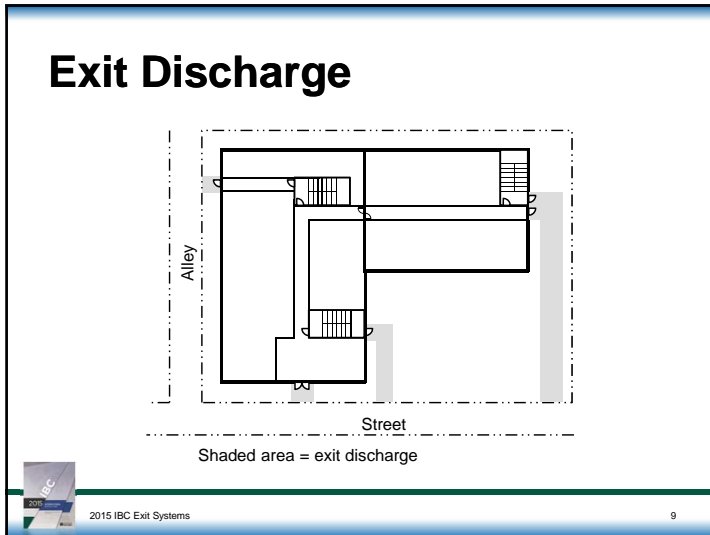
Exit Access



2015 IBC Exit Systems

8

2015 IBC Exit Systems



Definition of Exit

- An exit is defined as “that portion of a means of egress system between the exit access and the exit discharge or public way. Exit components include:
 - Exterior exit doors at the level of exit discharge
 - Interior exit stairways/ramps
 - Exit passageways
 - Exterior exit stairways/ramps
 - Horizontal exits

2015 IBC Exit Systems 10

Definitions of Exit Components

- The individual exit components are also specifically defined in the IBC:
 - Exit, horizontal
 - Exit passageway
 - Interior exit stairways
 - Exterior stairway
- The components are further defined by their applicable technical provisions.

2015 IBC Exit Systems 12

2015 IBC Exit Systems

Definition of Horizontal Exit

- A horizontal exit is defined as “an exit component consisting of fire-resistance-rated construction and opening protectives intended to compartmentalize portions of a building thereby creating refuge areas that afford safety from the fire and smoke from the area of fire origin.”



2015 IBC Exit Systems

13

Definition of Interior Exit Stairway

- An interior exit stairway is defined as “an exit component that serves to meet one or more means of egress design requirements, such as required number of exits or exit access travel distance, and provides for a protected path of egress travel to the exit discharge or public way.”



2015 IBC Exit Systems

15

Definition of Exit Passageway

- An exit passageway is defined as “an exit component that is separated from other interior spaces of a building or structure by fire-resistance-rated construction and opening protectives, and provides for a protected path of egress travel in a horizontal direction to an exit or to the exit discharge.”



2015 IBC Exit Systems

14

Definition of Exterior Exit Stairway

- An exterior exit stairway is defined as “an exit component that serves to meet one or more means of egress design requirements such as required number of exits or exit access travel distance, and is open to yards, courts or public ways.”



2015 IBC Exit Systems

16

2015 IBC Exit Systems

Exit Ramps

- Interior exit ramps and exterior exit ramps are also considered as exit components.
- The definitions and protective provisions for such ramps are consistent with those for interior exit stairways and exterior exit stairways, respectively.

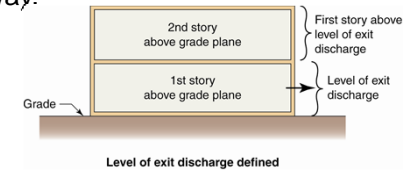


2015 IBC Exit Systems

17

Level of Exit Discharge

- The level of exit discharge is also specifically defined as “the story at the point at which an exit terminates and an exit discharge begins.”
- Exit discharge is “that portion of a means of egress system between the termination of an exit and a public way.”



2015 IBC Exit Systems

19

Exterior Exit Doors

- The most common exit component is an exterior exit door at the level of exit discharge.
- Exit doors, whether interior or exterior, are regulated under the provisions of Section 1010.



2015 IBC Exit Systems

18

Module 2

Use of Exit Components

20

2015 IBC Exit Systems

Concept of Exit Components

- Once reaching an exit component, the occupant is provided with an established degree of protection from fire and smoke.
- Fire-resistance-rated exitways are provided for interior travel, while exterior travel, although above the discharge level, is separated from an interior fire and smoke accumulation such that it is not a concern.



2015 IBC Exit Systems

21

Exits Section 1022.1

- An exit shall not be used for any purpose that interferes with its function as a means of egress.
- Once a given level of exit protection is provided, that protection level shall not be reduced until arrival at the exit discharge.
- Exit components are primarily required by Sections 1006 and 1007 addressing the number and configuration of exits.



2015 IBC Exit Systems

23

Concept of Exit Components

- Exits are key elements in the design of the means of egress for a variety of reasons, including:
 - Termination point for travel distance limits
 - Number of means of egress from a story



2015 IBC Exit Systems

22

Exits Sections 1006 and 1007

- Exits, in addition to the minimum number required by Section 1006, may also need to be provided in order to meet various means of egress design requirements in Chapter 10.
- The most common application is the limit placed on travel distance to an exit component.
 - Other applications include the required separation of exits per Section 1007.



2015 IBC Exit Systems

24

2015 IBC Exit Systems

Egress from Spaces Section 1006.2.1

- Two exits or exit access doorways shall be provided from a room or space where the design occupant load or the common path of egress travel distance exceeds the values set forth in Table 1006.2.1.



Egress from Spaces Section 1006.2.1.1

- A minimum of three exits or exit access doorways are required from rooms or spaces having an occupant load of 501 to 1000.
- A minimum of four exits or exit access doorways are required from rooms or spaces having an occupant load of more than 1000.



Egress from Spaces Table 1006.2.1

TABLE 1006.2.1
SPACES WITH ONE EXIT OR EXIT ACCESS DOORWAY

OCCUPANCY	MAXIMUM OCCUPANT LOAD OF SPACE	MAXIMUM COMMON PATH OF EGRESS TRAVEL DISTANCE (feet)		
		Without Sprinkler System (feet)		With Sprinkler System (feet)
		Occupant Load		
		Occupant Load	Occupant Load	
A, E, M	49	75	75	75 ^a
B	49	100	75	100 ^a
F	49	75	75	100 ^a
H-1, H-2, H-3	3	NP	NP	25 ^b
H-4, H-5	10	NP	NP	75 ^b
I-1, I-2 ^c , I-4	10	NP	NP	75 ^b
I-3	10	NP	NP	100 ^b
R-1	10	NP	NP	75 ^b
R-2	10	NP	NP	125 ^b
R-3 ^d	10	NP	NP	135 ^b
R-4 ^e	10	75	75	125 ^b
S ^f	29	100	75	100 ^b
U	49	100	75	75 ^b

For SI, 1 foot = 304.8 mm.
NP = Not Permitted.

a. Buildings equipped throughout with an automatic sprinkler system in accordance with Section 903.3.1.1 or 903.3.1.2. See Section 903 for occupancies where automatic sprinkler systems are permitted in accordance with Section 903.3.1.2.

b. Group H occupancies equipped throughout with an automatic sprinkler system in accordance with Section 903.2.5.

c. For a room or space used for assembly purposes having fixed seating, see Section 1029.8.

d. For the travel distance limitations in Group I-2, see Section 407.4.

e. The length of common path of egress travel distance in a Group R-3 occupancy located in a mixed occupancy building or within a Group R-3 or R-4 component living facility.

f. The length of common path of egress travel distance in a Group S-2 open parking garage shall be not more than 100 feet.



Egress from Stories Section 1006.3

- The minimum required number of exits from a story or occupied roof is based on the aggregate occupant load served.
- In multistory buildings, the use of exit access stairways is selectively permitted.
 - In all other cases, exit components must be utilized as a continuation of the means of egress system.



2015 IBC Exit Systems

Number of Exits Section 1006.3

- Each story above the second story must have at least one interior or exterior stairway.
 - An exit access stairway can provide the remaining required means of egress under specified conditions.
- Where three or more exits, or access to exits, are required on a story above the second, at least 50 percent of the required exits shall be interior or exterior exit stairways.



2015 IBC Exit Systems

29

Number of Exits Section 1006.3, Exceptions

- Interior exit stairways and ramps are not required in:
 - Open parking garages where the means of egress serves only the garage
 - Outdoor facilities where all portions of the means of egress are essentially open to the outside

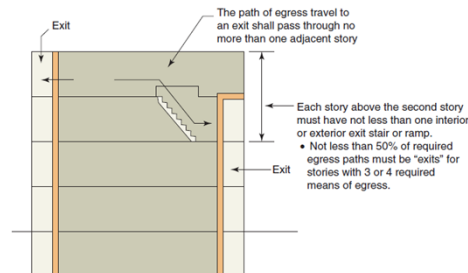


2015 IBC Exit Systems

31

Access to Exits at Adjacent Levels Section 1006.3

- Access to exits at other levels shall be from an adjacent story.



2015 IBC Exit Systems

30

Number of Exits Section 1006.3.1

- Each story or occupied roof must have the minimum number of exits, or access to exits, as set forth in Table 1006.3.1.

TABLE 1006.3.1
MINIMUM NUMBER OF EXITS OR
ACCESS TO EXITS PER STORY

OCCUPANT LOAD PER STORY	MINIMUM NUMBER OF EXITS OR ACCESS TO EXITS FROM STORY
1-500	2
501-1,000	3
More than 1,000	4



2015 IBC Exit Systems

32

2015 IBC Exit Systems

Number of Exits Section 1006.3.1

- The required number of exits, or exit access stairways where permitted, from any story shall be maintained until arrival at grade or a public way.
- It is important that the exits be adequately separated per Section 1007 in order to maintain their independence.



2015 IBC Exit Systems

33

Single Exits Section 1006.3.2, Condition 1

- A single exit or access to a single exit is permitted from any story or an occupied roof where the occupant load, number of dwelling units and exit access travel distance do not exceed the values in Table 1006.3.2(1) or 1006.3.2(2).



2015 IBC Exit Systems

35

Single Exits from Stories Section 1006.3.2

- A single exit or access to a single exit is permitted from any story or an occupied roof where in conformance with Section 1006.3.2.
- Five conditions are set forth where a single exit or access to a single exit is permitted.



2015 IBC Exit Systems

34

Number of Exits Table 1006.3.2(1)

TABLE 1006.3.2(1)
STORIES WITH ONE EXIT OR ACCESS TO ONE EXIT FOR R-2 OCCUPANCIES

STORY	OCCUPANCY	MAXIMUM NUMBER OF DWELLING UNITS	MAXIMUM COMMON PATH OF EGRESS TRAVEL DISTANCE
Basement, first, second or third story above grade plane	R-2 ^{a,b}	4 dwelling units	125 feet
Fourth story above grade plane and higher	NP	NA	NA

For SE: 1 foot = 3048 mm.

NP = Not Permitted.

NA = Not Applicable.

a. Buildings classified as Group R-2 equipped throughout with an *automatic sprinkler system* in accordance with Section 903.3.1.1 or 903.3.1.2 and provided with *emergency escape and rescue openings* in accordance with Section 1030.

b. This table is used for R-2 occupancies consisting of *dwelling units*. For R-2 occupancies consisting of *sleeping units*, use Table 1006.3.2(2).



2015 IBC Exit Systems

36

2015 IBC Exit Systems

Number of Exits Table 1006.3.2(2)

1006.3.2(2)
STORIES WITH ONE EXIT OR ACCESS TO ONE EXIT FOR OTHER OCCUPANCIES

STORY	OCCUPANCY	MAXIMUM OCCUPANT LOAD PER STORY	MAXIMUM COMMON PATH OF EGRESS TRAVEL DISTANCE (feet)
First story above or below grade plane	A, D ^a , E, F ^a , M, U	49	75
	H-2, H-3	3	25
	H-4, H-5, I, R-1, R-2 ^{b,c} , R-4	10	75
Second story above grade plane	S ^d	29	75
	B, F, M, S ^d	29	75
Third story above grade plane and higher	NP	NA	NA


For SI: 1 foot = 304.8 mm.
NP = Not Permitted.
NA = Not Applicable.

a. Buildings classified as Group R-2 equipped throughout with an *automatic sprinkler system* in accordance with Section 903.3.1.1 or 903.3.1.2 and provided with *emergency escape and rescue openings* in accordance with Section 1030.

b. Group B, F and S occupancies in buildings equipped throughout with an *automatic sprinkler system* in accordance with Section 903.3.1.1 shall have a maximum *exit access* travel distance of 100 feet.

c. This table is used for R-2 occupancies consisting of *sleeping units*. For R-2 occupancies consisting of *dwelling units*, use Table 1006.3.2(1).


d. The length of *exit access* travel distance in a Group S-2 *open parking garage* shall be not more than 100 feet.



2015 IBC Exit Systems 37

Dwelling Units Section 1006.3.2, Condition 5


- Single exits are permitted within and from dwelling units in single-story and multistory buildings where the:
 - dwelling unit complies as a space with one means of egress, and
 - exit from the dwelling unit discharges directly to the exterior at the level of exit discharge, or the exit access outside of the unit's entrance door provides access to at least two exits.



2015 IBC Exit Systems 39

Number of Exits Section 1006.3.2, Conditions 2–5

- In addition to the allowances for single-exit stories in Tables 1006.3.2(1) and 1006.3.2(2), there are a number of other conditions under which a single exit is permitted:
 - Rooms, areas and spaces complying with Section 1006.2.1, provided the exits discharge directly to the exterior at the level of exit discharge
 - Parking garages where vehicles are parked mechanically
 - Group R-3 and R-4 occupancy buildings
 - Individual dwelling units (subject to occupant load and travel distance limitations)




2015 IBC Exit Systems 38

Mixed Occupancies Section 1006.3.2.1

- In a mixed occupancy condition where single exits are permitted for the occupancies involved, the maximum number of occupants served by the single exit shall be based on:

$$\frac{\text{calculated number of occupants}}{\text{allowable number of occupants}} \leq 1.0$$



2015 IBC Exit Systems 40

2015 IBC Exit Systems

Basements

Section 1006.3.2.2

- A basement provided with one exit shall not be located more than one story below grade.
- This specific limitation clarifies the scope of Tables 1006.3.2(1) and (2) where basements are addressed.



2015 IBC Exit Systems

41

Separation of Two Exits

Section 1007.1.1

- Where two exits, exit access doorways, exit access stairways or ramps, or any combination thereof, are required within the exit access, they shall be separated a minimum of $\frac{1}{2}$ of the overall diagonal of the building or area served.
 - Where the building is fully sprinklered, the required separation is reduced to $\frac{1}{3}$ of the overall diagonal.



2015 IBC Exit Systems

43

Exit Configuration

Section 1007.1

- Where multiple exits are required, they shall be adequately separated from each other such that if one exit is blocked, the others are available.
- Exits, exit access doorways, and exit access stairways and ramps serving spaces and individual stories shall be separated in conformance with Section 1007.

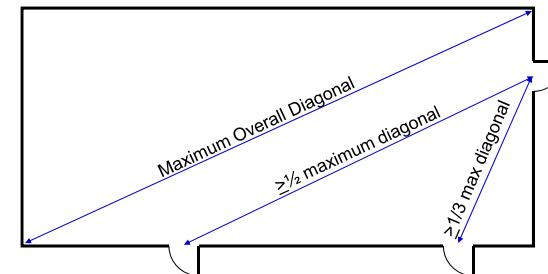


2015 IBC Exit Systems

42

Separation of Two Exits

Section 1007.1.1



2015 IBC Exit Systems

44

2015 IBC Exit Systems

Separation of Two Exits Section 1007.1.1.1

- The separation distance required in Section 1007.1.1 shall be measured to:
 - any point along the width of the doorway (exits and exit access doorways)
 - the closest riser (exit access stairways)
 - the start of the ramp run (exit access ramps)



2015 IBC Exit Systems

45

Module 3

Specifics of Exit Components

47

Separation of Three or More Exits Section 1007.1.2

- Where access to three or more exits is required, at least two must be separated in conformance with Section 1007.1.1.
- The additional required exit(s) must be located a reasonable distance from the others so that if one becomes blocked, the others will be available.



2015 IBC Exit Systems

46

Exterior Doors at the Level of Exit Discharge Section 1022.2

- For most buildings, the typical exit components are exterior doors at or near grade.
- This component is considered as a protected element as it leads directly to exterior travel at ground level, providing direct access to a public way with limited, if any, concern for fire and smoke risk.



2015 IBC Exit Systems

48

2015 IBC Exit Systems

Exterior Doors at the Level of Exit Discharge Section 1022.2

- Complying doors, including exterior doors, are regulated by Section 1010.
- In addition, Section 1022.2 mandates that all buildings used for human occupancy be provided with at least one exterior door that meets the requirements of Section 1010.1.1 (size of doors).



2015 IBC Exit Systems

49

Interior Exit Stairways and Ramps Section 1023.1

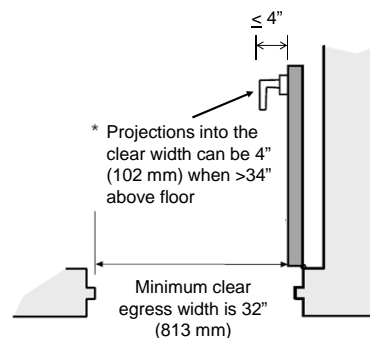
- Interior exit stairways and ramps shall be enclosed and lead directly to the exterior of the building or extended to the exterior through the use of a complying exit passageway.
- As an alternative, extended travel is permitted through an interior exit discharge area as limited by Section 1028.1.
 - Specifics are addressed under the Exit Discharge module of this program.



2015 IBC Exit Systems

51

Exterior Doors at the Level of Exit Discharge Section 1022.2



2015 IBC Exit Systems

50

Interior Exit Stairways and Ramps Section 1023.1

- An interior stairway or ramp shall not be used for any purpose other than:
 - A means of egress
 - A circulation path



2015 IBC Exit Systems

52

2015 IBC Exit Systems

Interior Exit Stairway Construction Section 1023.2

- Enclosures for interior exit stairways and ramps are to be constructed as fire barriers or horizontal assemblies, or both.
 - Minimum 2-hour where connecting four or more stories
 - Otherwise, minimum of 1-hour
 - Not less than the rating of the floor assembly penetrated



2015 IBC Exit Systems

53

Interior Exit Stairway Extension Section 1023.3.1

- Where interior exit stairways and ramps are extended by an exit passageway, the stairway/ramp shall be separated from the exit passageway by a fire barrier or horizontal assembly, or both.
 - The minimum rating of the fire barrier shall be not less than the required rating for the interior exit stairway/ramp.
- The only opening permitted in the separation between the stairway and exit passageway is the required fire door assembly.



2015 IBC Exit Systems

55

Interior Exit Stairway Termination Section 1023.3

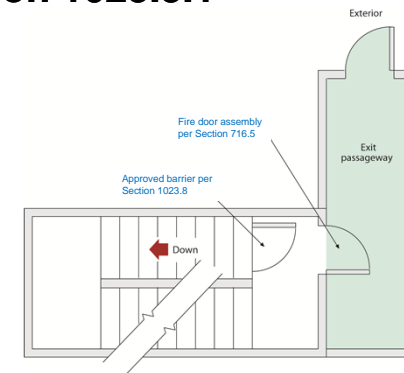
- Interior exit stairways and ramps are to be continuous and terminate at an exit discharge or the public way, except where extended by an exit passageway.
 - Such interior exit stairways and ramps may open into an interior exit discharge condition as established in Exceptions 1 and 2 of Section 1028.1.



2015 IBC Exit Systems

54

Interior Exit Stairway Extension Section 1023.3.1



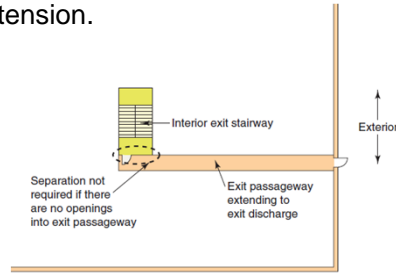
2015 IBC Exit Systems

56

2015 IBC Exit Systems

Interior Exit Stairway Extension Section 1023.3.1, Exception 2

- The fire barrier and fire door assemblies are not required where there are no openings in the exit passageway extension.



2015 IBC Exit Systems

57

Interior Exit Stairway Penetrations Section 1023.5

- Penetrations into and openings through interior exit stairways and ramps are generally prohibited.
- Allowances include:
 - Required exit doors
 - Independent equipment and ductwork necessary for ventilation or pressurization
 - Sprinkler piping and standpipes
 - Electrical raceways serving the enclosure



2015 IBC Exit Systems

59

Interior Exit Stairway Openings Section 1023.4

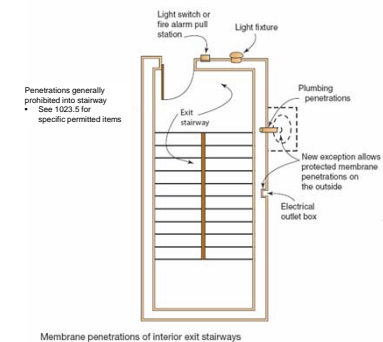
- Interior exit stairway and ramp opening protectives shall comply with Section 716.
- Openings other than unprotected exterior openings are limited to those necessary for:
 - Exit access to the enclosure from normally occupied spaces, and
 - Egress from the enclosure.
- Elevators are not permitted to open into interior exit stairways and ramps.



2015 IBC Exit Systems

58

Interior Exit Stairway Penetrations Section 1023.5, Exception



2015 IBC Exit Systems

60

2015 IBC Exit Systems

Interior Exit Stairway Penetrations Section 1023.5

- There shall be no penetrations or communicating openings, whether protected or not, between adjacent interior exit stairways and ramps.



2015 IBC Exit Systems

61

Interior Exit Stairway Ventilation Section 1023.6

- Under each of the three ventilation conditions, openings into the fire-resistance-rated construction shall be protected and limited to those needed for maintenance and operation.
- Interior exit stairway and ramp ventilation systems shall be independent of other building ventilation systems.



2015 IBC Exit Systems

63

Interior Exit Stairway Ventilation Section 1023.6

- Equipment and ductwork for interior exit stairway and ramp ventilation must:
 - Be located at the building's exterior and directly connect to the enclosure by ductwork in complying shafts, or
 - When located within the enclosure, receive intake air taken directly from the outdoors and exhaust air directly to the outside, or utilize ducts within complying shafts, or
 - When located within the building, be separated from the remainder of the building, including other mechanical equipment, through the use of complying shafts.



2015 IBC Exit Systems

62

Interior Exit Stairway Exterior Walls Section 1023.7

- In addition to the general requirements addressing exterior wall protection, special provisions apply where nonrated walls or unprotected openings enclose the exterior of the stairway and the walls/openings are exposed by other parts of the building at less than 180 degrees.



2015 IBC Exit Systems

64

2015 IBC Exit Systems

Interior Exit Stairway Exterior Walls Section 1023.7

- Under such conditions, the building exterior walls within 10 feet horizontally of a nonrated wall or opening shall be rated for at least 1 hour.
 - Openings within such walls shall be protected by minimum ¾-hour protectives.
- The fire protection shall extend from the ground at least 10 feet vertically above the topmost landing, or to the roof, whichever is lower.



2015 IBC Exit Systems

65

Discharge Identification Section 1023.8

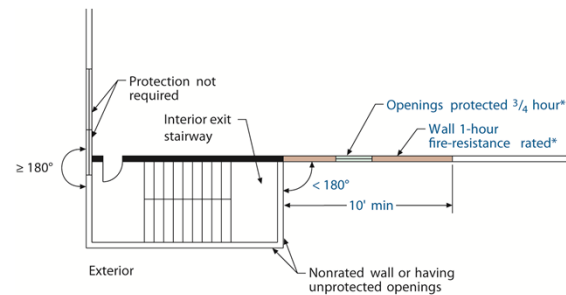
- Where an interior exit stairway or ramp continues below its level of exit discharge, an approved barrier must be provided to prevent persons from unintentionally traveling to the level(s) below.
 - Directional exit signage must be provided in addition to the required barrier.



2015 IBC Exit Systems

67

Interior Exit Stairway Exterior Walls Section 1023.7



* Protected to a height of 10 feet above topmost landing or roof, whichever is less.



2015 IBC Exit Systems

66

Stairway Identification Signs Section 1023.9

- An informational sign is required at each floor level landing of an interior exit stairway or ramp connecting four or more stories.
- In addition to the stairway identification sign, a floor-level sign in visual characters, raised characters and Braille complying with ICC A117.1 shall be located adjacent to the door leading from the interior stairway or ramp onto the story to identify the floor level.



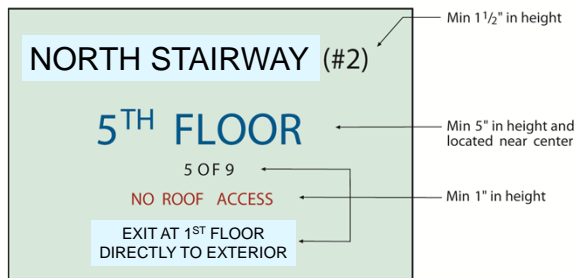
2015 IBC Exit Systems

68

2015 IBC Exit Systems

Stairway Identification Signs Section 1023.9

Min sign size of 18" by 12"



2015 IBC Exit Systems

69

Smokeproof Enclosures and Pressurized Stairways and Ramps Section 1023.11

- As required for high-rise buildings and underground buildings, interior exit stairways and ramps shall be smokeproof enclosures.
 - The requirements for construction and operation are established in Section 909.20.



2015 IBC Exit Systems

71

Elevator Lobby Identification Signs Section 1023.10

- Where the landing of an interior stairway has two or more doors that lead to the floor level, any door with direct access to an enclosed elevator lobby shall be identified.
- A sign shall be located on the door or adjacent to the door that states "Elevator Lobby."
 - Letters shall be at least 1 inch in height and in contrast to their background.



2015 IBC Exit Systems

70

Termination and Extension Section 1023.11.1

- Termination of a smokeproof enclosure shall occur at an exit discharge or the public way.
 - A smokeproof enclosure is permitted to egress through areas on the level of exit discharge as permitted by Section 1028.1 for interior exit discharge.



2015 IBC Exit Systems

72

2015 IBC Exit Systems

Termination and Extension Section 1023.11.1

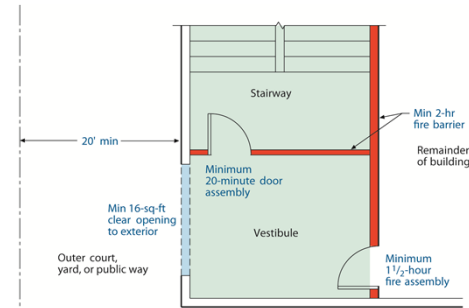
- The extension of a smokeproof enclosure by an exit passageway is permitted where:
 - The exit passageway is without openings other than the fire door assembly required by Section 1023.3.1, and
 - Doors necessary for egress from the exit passageway.
- Openings are permitted within the exit passageway and the fire barrier separating the exit passageway from the smokeproof enclosure is not required provided:
 - The passageway is protected and pressurized in the same manner as the smokeproof enclosure.



2015 IBC Exit Systems

73

Natural Ventilation Alternative Section 909.20.3



For SI: 1 foot = 304.8 mm, 1 squarefoot = 0.093 m².



2015 IBC Exit Systems

75

Enclosure Access Section 1023.11.2

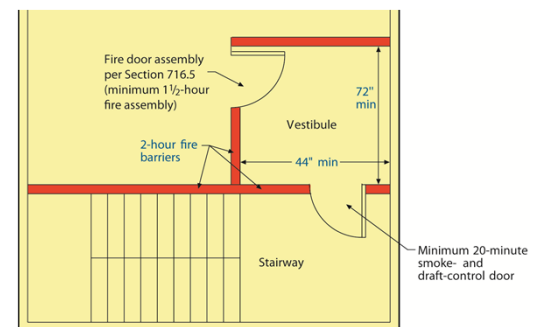
- Unless the pressurization alternative is used, access to the stairway within a smokeproof enclosure shall be by way of a vestibule or an open exterior balcony.



2015 IBC Exit Systems

74

Mechanical Ventilation Alternative Section 909.20.4



For SI: 1 inch = 25.4 mm.



2015 IBC Exit Systems

76

2015 IBC Exit Systems

Stairway Pressurization Alternative Section 909.20.5

- Where the building is fully sprinklered, the vestibule is not required, provided each interior exit stairway is pressurized.
- The pressurization level, in the shaft relative to the building, shall be:
 - Not less than 0.10 inch of water
 - Not more than 0.35 inch of water



2015 IBC Exit Systems

77

Exit Passageway Width Section 1024.2

- Exit passageway minimum width and required capacity are regulated in much the same manner as required for corridors.
- The minimum required width is 44 inches, with a reduction to 36 inches permitted where the occupant load served is less than 50.
- Other than permissible encroachments, the minimum width or required capacity must be unobstructed.



2015 IBC Exit Systems

79

Exit Passageways Section 1024.1

- An exit passageway, provides exit travel along a horizontal path, typically as selectively determined by the designer.
- Exit passageways are also mandated by various provisions of the code where highly protected egress travel is necessary.
- An exit passageway shall not be used for any purpose other than as a means of egress and a circulation path.



2015 IBC Exit Systems

78

Exit Passageway Construction Section 1024.3

- Exit passageway enclosures shall have walls, floors and ceilings with a minimum 1-hour fire-resistance rating
 - Fire barriers or horizontal assemblies, or both, must be provided in order to achieve the required fire-resistance.
- Where connecting interior exit stairways, the rating cannot be less than that of the stairway enclosure.



2015 IBC Exit Systems

80

2015 IBC Exit Systems

Exit Passageway Termination Section 1024.4

- Exit passageways located on the level of exit discharge shall be continuous until reaching the exit discharge or public way.
- Where located on other levels of the building, exit passageways shall terminate at an exit, such as an interior exit stairway.



2015 IBC Exit Systems

81

Exit Passageway Penetrations Section 1024.6

- Penetrations are also limited in exit passageways in much the same manner as for interior exit stairways.
- Generally prohibited, allowances include:
 - Required exit doors
 - Independent equipment and ductwork necessary for ventilation or pressurization
 - Sprinkler piping and standpipes
 - Electrical raceways serving the enclosure
 - Protected membrane penetrations on the outside of the exit passageway.



2015 IBC Exit Systems

83

Exit Passageway Openings Section 1024.5

- Openings are limited in exit passageways in much the same manner as for interior exit stairways.
- Other than those in the exterior wall, openings are limited to those necessary for exit access to the exit passageway from normally occupied spaces, and for egress from the exit passageway.
 - Exception for mall buildings



2015 IBC Exit Systems

82

Exit Passageway Ventilation Section 1024.7

- Equipment and ductwork necessary for independent pressurization is permitted where compliant with one of three established methods.
 - Although not specifically addressed, exit passageway ventilation must also comply with one of the three methods.
- Exit passageway ventilation systems shall be independent of other building ventilation systems.



2015 IBC Exit Systems

84

2015 IBC Exit Systems

Horizontal Exits Section 1026.1

- Horizontal exits, while permitted as exit elements, address egress differently than the other exit components.
- One or more refuge areas are created to allow occupants protection from the area of fire incidence.
- Occupants then utilize the exit system provided for the other building occupants if continued egress is necessary.



2015 IBC Exit Systems

85

Horizontal Exits Section 1026.1

- Due to the concept of relocation rather than evacuation, all exits from a space or story cannot be horizontal exits.
- A horizontal exit cannot be the only exit from a portion of the building.
- If two or more means of egress are required, a limit of 50 percent of the total number, capacity and width are permitted to be horizontal exits.

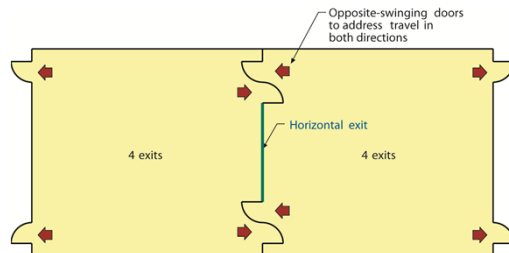


2015 IBC Exit Systems

87

Horizontal Exits Section 1026.1

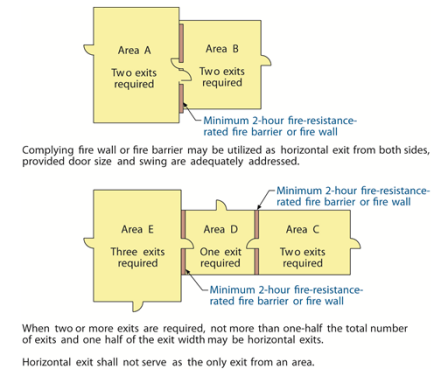
- A refuge area can be created on one or both sides of the horizontal exit.



2015 IBC Exit Systems

86

Horizontal Exits Section 1026.1



2015 IBC Exit Systems

88

2015 IBC Exit Systems

Horizontal Exits Section 1026.1, Exceptions

- The limit on the number and width of horizontal exits is modified for:
 - Group I-2 occupancies, where up to 2/3 of the required exits can be horizontal exits
 - Group I-3 occupancies where all of the exits are permitted to be horizontal exits



2015 IBC Exit Systems

89

Horizontal Exit Fire Barriers Section 1026.2

- Where fire barriers are used, they shall extend vertically through all levels of the building.
 - Continuous vertical separation is not required where minimum 2-hour floor assemblies are provided with no unprotected openings.
- Horizontal exits constructed by fire barriers shall be continuous from exterior wall to exterior wall to completely divide the floor served by the horizontal exit.



2015 IBC Exit Systems

91

Horizontal Exit Separation Section 1026.2

- A horizontal exit separation can be provided through two different methods:
 - Minimum 2-hour fire wall, or
 - Minimum 2-hour fire barriers
- The fire wall will completely divide the structure into two separate buildings, with egress permitted from one to another.



2015 IBC Exit Systems

90

Horizontal Exit Opening Protectives Section 1026.3

- Fire doors in a horizontal exit shall be self-closing or automatic-closing when activated by a smoke detector.
- Where located in a cross-corridor condition, the doors must be automatic-closing by activation of a smoke detector.



2015 IBC Exit Systems

92

2015 IBC Exit Systems

Refuge Area Section 1026.4

- In addition to enclosure by a fire-resistive separation, the size of the refuge area must be adequate for the occupant load served.
- It shall be a space occupied by the same tenant or a public area open to all occupants.
- The available floor area shall be such that it can accommodate the original occupant load of the refuge area plus the occupant load anticipated from the adjoining compartment.



2015 IBC Exit Systems

93

Capacity of Refuge Area Section 1026.4.1

- The capacity of the refuge area is determined based on a net floor area allowance of:
 - 3 square feet per occupant, except
 - 6 square feet for Group I-3
 - 15 square feet for ambulatory occupancies in Group I-2
 - 30 square feet for nonambulatory occupancies in Group I-2.



2015 IBC Exit Systems

95

Refuge Area Section 1026.4

- The available floor area shall be such that it can accommodate the original occupant load of the refuge area plus the occupant load anticipated from the adjoining compartment.
- The “anticipated” occupant load shall be based on the capacity of the horizontal exit doors entering the refuge area.



2015 IBC Exit Systems

94

Number of Exits Section 1026.4.2

- The refuge area shall be provided with exits based on its original occupant load without adding the occupant load imposed by persons entering it through horizontal exits from other areas.
- At least one exit shall lead directly to the exterior or to an interior exit stairway or ramp.
 - Exception where refuge area has direct egress and no travel back through original compartment.

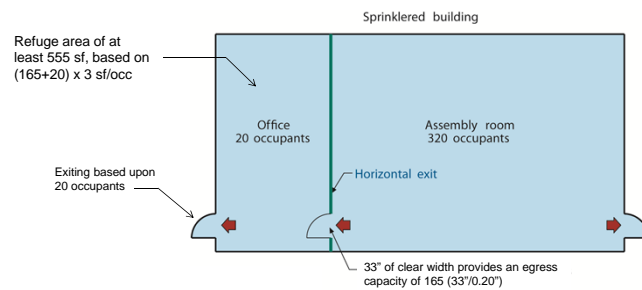


2015 IBC Exit Systems

96

2015 IBC Exit Systems

Number of Exits Section 1026.4.2



2015 IBC Exit Systems

97

Exterior Exit Stairway Open Side Section 1027.3

- Where exterior exit stairways and ramps are part of the means of egress, they shall be open on at least one side.
- The open side shall have an adjacent aggregate open area of 35 square feet at each floor level and intermediate landing level.
- The open area must be at least 42 inches above the adjacent floor or landing level.



2015 IBC Exit Systems

99

Exterior Exit Stairways and Ramps Section 1027.2

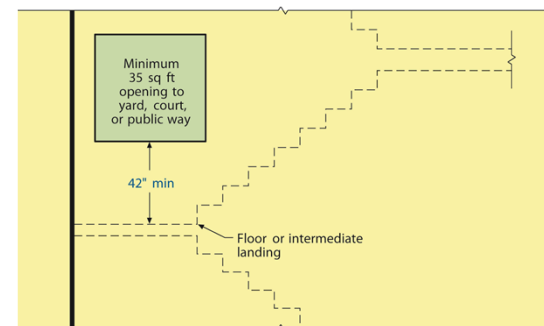
- Exterior exit stairways and ramps are considered as exit components and are permitted as an element of the means of egress, except for:
 - Group I-2 occupancies
 - Buildings more than six stories above grade plane
 - High-rise buildings.



2015 IBC Exit Systems

98

Exterior Exit Stairway Open Side Section 1027.3



For SI: 1 inch = 25.4 mm, 1 square foot = 0.093 m².

2015 IBC Exit Systems

100

2015 IBC Exit Systems

Exterior Exit Stairway Location Section 1027.5

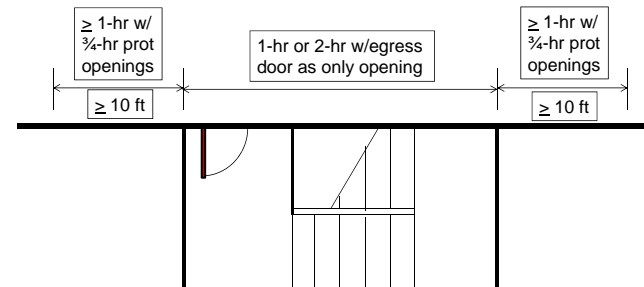
- At least 10 feet of horizontal separation shall be provided between an exterior exit stairway/ramp and:
 - Adjacent lot lines
 - Other portions of the same building
 - Other buildings on the same lot.
- The 10-foot minimum separation is not required where exterior walls and openings of the adjacent building are protected per Section 705 based on Fire Separation Distance (FSD).



2015 IBC Exit Systems

101

Exterior Exit Stairway Protection Section 1027.6



2015 IBC Exit Systems

103

Exterior Exit Stairway Protection Section 1027.6

- In a general sense, exterior exit stairways and ramps must be separated from the interior of the building in the same manner as for interior exit stairways and ramps.
- Openings within the separation walls are limited to those doors necessary for egress from normally occupied spaces.



2015 IBC Exit Systems

102

Exterior Exit Stairway Protection Section 1027.6, Exception 1

- An exterior exit stairway does not need to be separated from the interior of the building in buildings no more than two stories above grade plane.
 - This allowance is not applicable to Group R-1 and R-2 occupancies.



2015 IBC Exit Systems

104

2015 IBC Exit Systems

Exterior Exit Stairway Protection Section 1027.6, Exception 2

- An exterior exit stairway does not need to be separated from the interior of the building where two remote exterior stairways or other approved open-to-the-air exits are provided.
 - 50 percent openness is required
 - Top of openings to be not less than 7 feet above the top of the balcony



2015 IBC Exit Systems

105

Exterior Exit Stairway Protection Section 1027.6, Exception 3

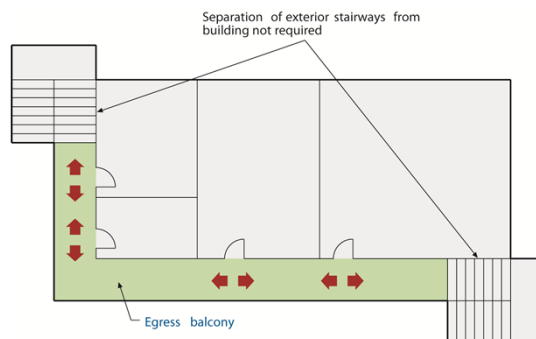
- An exterior exit stairway does not need to be separated from the interior of the building where it connects to open-ended corridors under the conditions of Section 1027.6, Exception 3.
- This building configuration is typically found where breezeways and similar building elements are used to serve each story.



2015 IBC Exit Systems

107

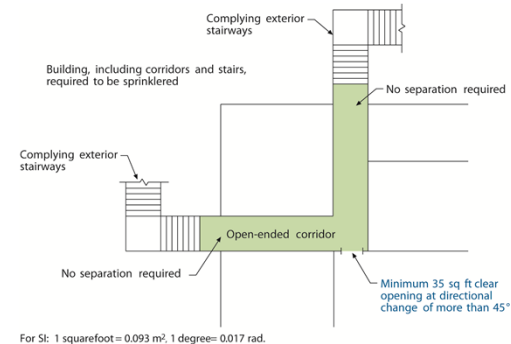
Exterior Exit Stairway Protection Section 1027.6, Exception 2



2015 IBC Exit Systems

106

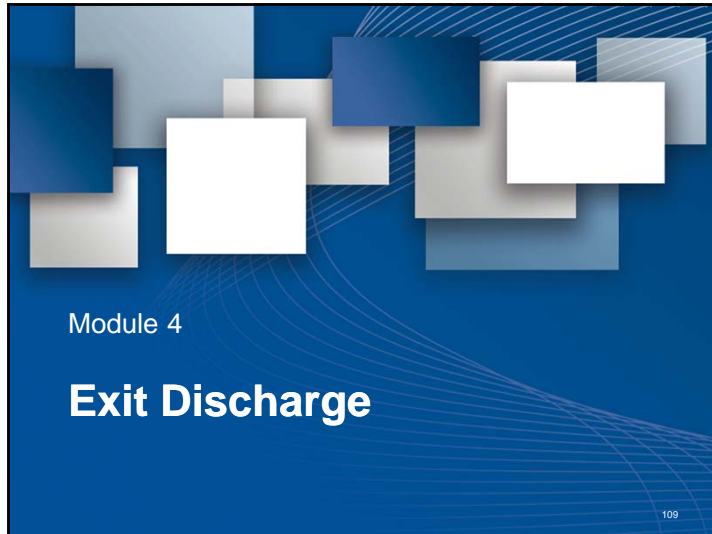
Exterior Exit Stairway Protection Section 1027.6, Exception 3



2015 IBC Exit Systems

108

2015 IBC Exit Systems



Module 4

Exit Discharge

109

Exit Discharge Section 1028.1

- Exits shall discharge directly to the exterior of the building.
- The exit discharge shall be at grade or provide a direct path of egress travel to grade.
- The exit discharge shall not reenter a building.
- The required number of exits shall be maintained until arrival at the exit discharge.
 - Once reaching the exit discharge, multiple exits are no longer mandated.



2015 IBC Exit Systems

111

Exit Discharge Section 1028

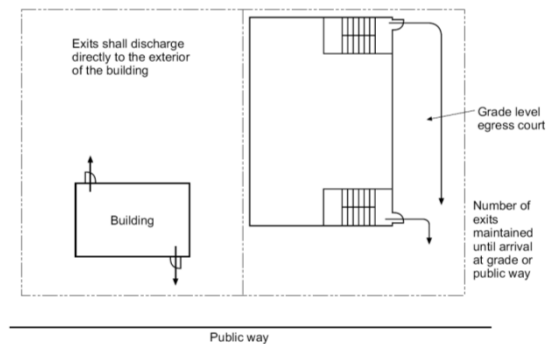
- The “exit discharge” is the third and final part of the means of egress system.
- With limited exception, exit discharge is exterior egress travel at grade between the building and the public way.
- Although it is the least hazardous portion of the means of egress process, the exit discharge is regulated to a limited degree.



2015 IBC Exit Systems

110

Exit Discharge Section 1028.1



2015 IBC Exit Systems

112

2015 IBC Exit Systems

Interior Exit Discharge Section 1028.1

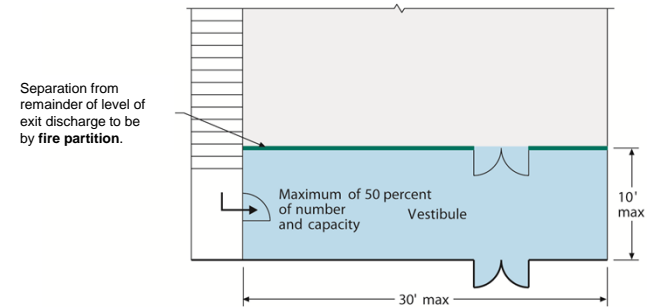
- While exit discharge typically occurs at the exterior of the building, there are two exceptions that permit interior exit discharge.
- The combined use of the two exceptions cannot exceed 50 percent of the number and capacity of the required exits.



2015 IBC Exit Systems

113

Interior Exit Discharge Section 1028.1, Exception 2



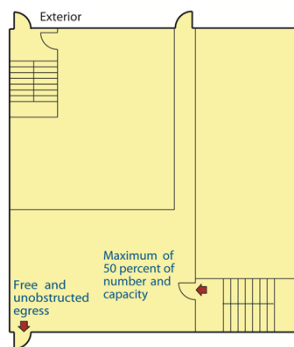
For SI: 1 foot = 304.8 mm.



2015 IBC Exit Systems

115

Interior Exit Discharge Section 1028.1, Exception 1



Entire floor level is sprinklered and protected from areas below by construction equivalent to rating of interior exit stairway enclosure

Exit to be readily visible and identifiable from the point of termination of the enclosure.

Free and unobstructed egress

Maximum of 50 percent of number and capacity



2015 IBC Exit Systems

114

Exit Discharge Section 1028

- There are four key issues regarding the regulation of the exit discharge:
 - Capacity/width
 - Openness
 - Construction
 - Access to public way



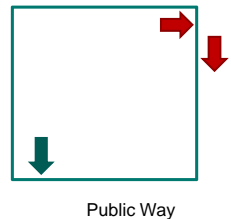
2015 IBC Exit Systems

116

2015 IBC Exit Systems

Exit Discharge Capacity Section 1028.2

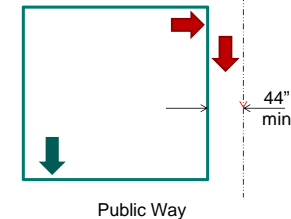
- Of primary importance, the capacity of the exit discharge cannot be less than the required discharge capacity of the exits being served.



117

Exit Discharge Width Section 1028.4.1

- The minimum capacity of egress courts shall be based upon the capacity, but not less than 44 inches (36 inches for Group R-3).
- The minimum height shall be 7 feet.



119

Exit Discharge Openness Section 1028.3

- Exit discharge components must be open to the exterior.
- Performance-wise, the exitway must be sufficiently open so that the accumulation of smoke and toxic gases is minimized.
- Throughout the code, the life-safety hazard level is greatly reduced where smoke and toxic gases are controlled or removed.



118

Exit Discharge Construction Section 1028.4.2

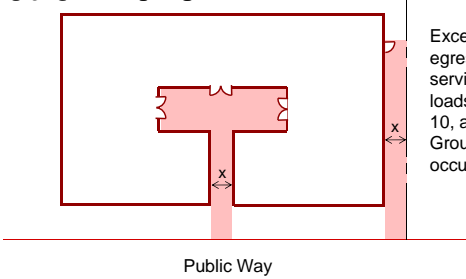
- Where the exit discharge is located such that egress travel must occur in close proximity to the building, the building's exterior wall and openings are regulated for fire resistance and fire protectives.
- Egress courts adjacent to the building must allow for an efficient and protected path of travel to the public way.



120

2015 IBC Exit Systems

Exit Discharge Construction Section 1028.4.2



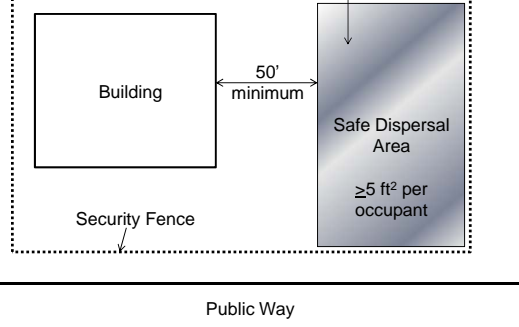
Exceptions for egress courts serving occupant loads of less than 10, as well as for Group R-3 occupancies

Public Way

Where X is less than 10 feet in width, exterior wall to be minimum 1-hour with minimum 45-minute openings to height of 10 feet or roof height, whichever is less

2015 IBC Exit Systems 121

Safe Dispersal Area Section 1028.5



Area to be permanently maintained and identified.

Building

50' minimum

Safe Dispersal Area

≥5 ft² per occupant

Security Fence

Public Way

2015 IBC Exit Systems 123


Access to a Public Way Section 1028.5

- The exit discharge shall provide a direct and unobstructed path of travel to the public way.
- Where access to a public way cannot be provided, a safe dispersal area can be provided.

2015 IBC Exit Systems 122

International Code Council is a Registered Provider with The American Institute of Architects Continuing Education Systems. Credit earned on completion of this program will be reported to CES Records for AIA members. Certificates of Completion for non-AIA members are available on request.

This program is registered with the AIA/CES for continuing professional education. As such, it does not include content that may be deemed or construed to be an approval or endorsement by the AIA of any material of construction or any method or manner of handling, using, distributing, or dealing in any material or product. Questions related to specific materials, methods, and services will be addressed at the conclusion of this presentation.



2015 IBC Exit Systems

Copyright Materials

This presentation is protected by US and International Copyright laws. Reproduction, distribution, display and use of the presentation without written permission of the speaker is prohibited.

© International Code Council 2016



125

Thank you for participating!!



2015 IBC Exit Systems

126