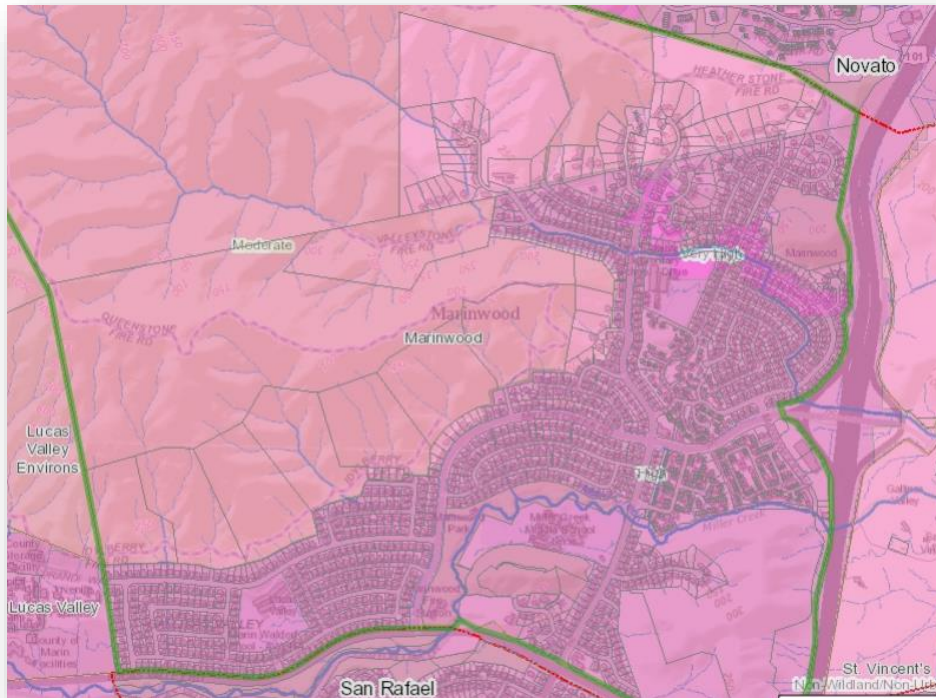




# San Rafael Fire Vegetation Management



**FIREWISE - Neighborhood Planning Elements**



SAN RAFAEL FIRE DEPARTMENT

# San Rafael Fire Handouts:



 **GET EMERGENCY ALERTS**

Do you live, work, or go to school in Marin County? Emergency officials use Alert Marin to send rapid notifications that could save lives.

Register for Alert Marin to receive voice and text emergency alerts.

- ♦ Alert Marin is easy to use and works with all browsers, cell phones, tablets, computers, and more
- ♦ Offers the ability to register up to five locations (home, children's schools, work, and more)

Register at [www.AlertMarin.org](http://www.AlertMarin.org)



**FIREWISE COMMUNITIES/USA<sup>®</sup> RECOGNITION PROGRAM**

The Firewise program empowers residents with a wildfire risk to work collaboratively with neighbors to take important proactive steps to protect their homes against the threat of wildfire.

**READY TO BEGIN?**  
Follow these steps on your way to becoming an official Firewise community. ▶

**FIRE Safe MARIN**

**HOW TO PREPARE YOUR HOME**

**WILDLAND URBAN INTERFACE**

*The height of fire season is just around the corner.* Property owners have a YEAR-ROUND responsibility and obligation to maintain the vegetation on their property in a condition that will not contribute to the spread of a fire. Effective fire prevention measures can keep fires from starting, and reduce hazards that could threaten your property and your neighbors' property should a wildfire occur. On the next slides, you will find information about San Rafael Fire Department's Vegetation Management Program to assist you in complying with property maintenance regulations designed to protect San Rafael from the threat of wildfire. The **Wildland Urban Interface Standards** on the next slides outline *minimum* vegetation management and fire hazard abatement requirements, and are the guidelines used by the Fire Department to determine compliance with City regulations.

**About Compliance**  
Beginning late spring, of each year, the San Rafael Fire Prevention Department will begin inspecting properties designated in the Wildland Urban Interface to determine compliance with the regulations outlined in Ordinance Number 1856 - Chapter 4.12. **Your property must be in compliance with these standards every year.**

If your property is not in compliance with Ordinance Number 1856 - Chapter 4.12, at the time of the initial inspection, you will be issued an official **Notice of Violation**, and your property will be re-inspected. Properties that are not in compliance on or after re-inspection are in violation of San Rafael Municipal Code Section 4.12.030 and may result in fines and/or assessment of San Rafael Municipal abatement costs, as per the San Rafael Municipal Code Sections 4.12.050 and 4.12.060. Subsequently, a tax lien can be placed on the property in an amount equal to the cost of the work performed, plus re-inspection fee and administrative fees, if not previously paid.

**Vegetation Management Program**  
San Rafael Fire Department Public Works and Department utilize tax revenue (passed on to property owners) to fund vegetation management activities throughout the community. Of the total expenditures, 40% support's vegetation management in the City of San Rafael. Each activity addresses a different aspect of safety or preservation. These funds, the City of San Rafael has been able to undertake high quality inspections, public education campaigns and other activities designed to prevent costly damaging wildfires for our

  **FIREWISE USA<sup>™</sup>**  
RESIDENTS REDUCING WILDFIRE RISKS



SAN RAFAEL FIRE DEPARTMENT

# San Rafael Fire



## Vegetation Management



Wildland Urban  
Interface (WUI)

Defensible Space

San Rafael Ordinance **4.12** requires homeowners living within designated WUI zones to maintain up to 100 feet of defensible space around structures or to their property line, whichever is closer.

## Vegetation Management



Remove

### Flammable Plants

- Bamboo
- Acacia
- Broom
- Pampas Grass
- Juniper





SAN RAFAEL FIRE DEPARTMENT

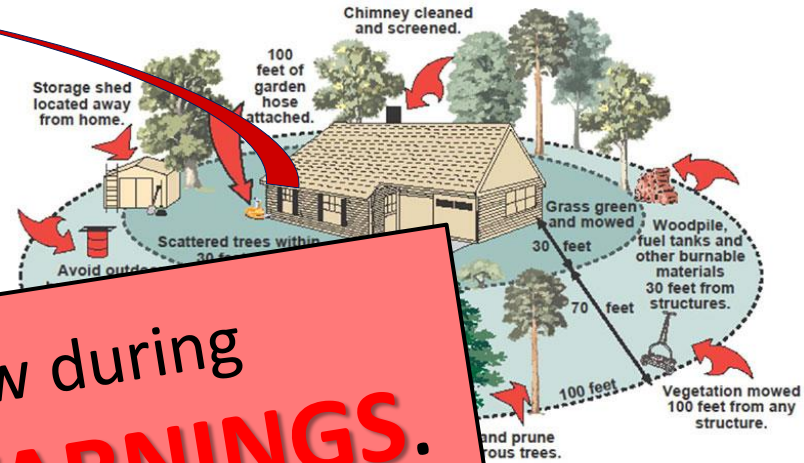
# San Rafael Fire



## Vegetation Management

**Zone 1** extends 30 feet\* out from buildings, structures, decks, etc.

- Remove all dead plants (vegetation).
- Remove dead or dying trees.
- Trim trees.
- Trim branches near chimney.
- Relocate woodpiles near windows.
- Remove or prune shrubs near windows.
- Remove vegetation and items from under decks.
- Create a **separation** between trees, shrubs and items that could catch fire, such as patio furniture, wood piles, swing sets, etc.



**DO NOT** mow during RED FLAG WARNINGS.

100 feet out from buildings, structures, decks, etc.

- Cut or mow grass down to a max height of 4 in.
- Create horizontal spacing between shrubs and trees.
- Create vertical spacing between grass, shrubs and trees.
- Remove fallen leaves, debris, and small branches to less than a depth of 3 inches.

# San Rafael Fire VIDEOS



WildFIRE Wizard Modeling Project  
Firebrand Exposure Experiment

IBHS Research Center  
Richburg, South Carolina

Ignition Times:

Pine needle bed - 00:09

Gutter pine needles - 01:02

Melting PVC gutter collapse - 02:43



SAN RAFAEL FIRE DEPARTMENT

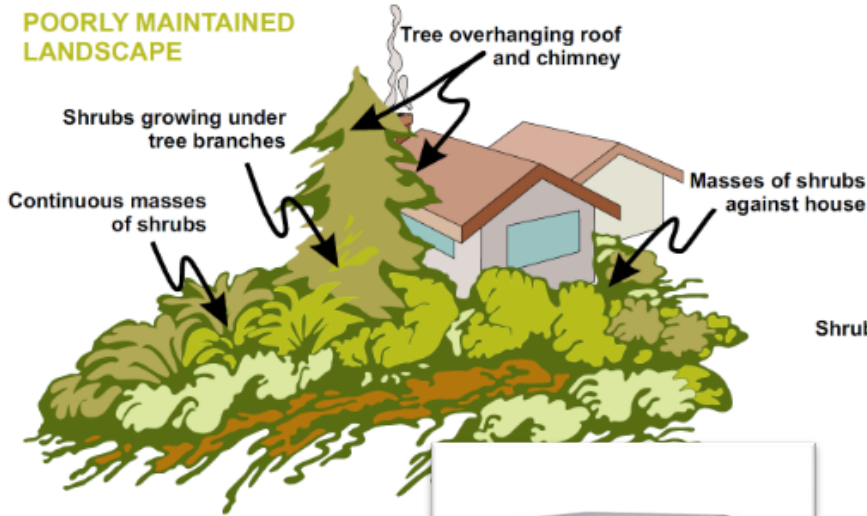
# San Rafael Fire



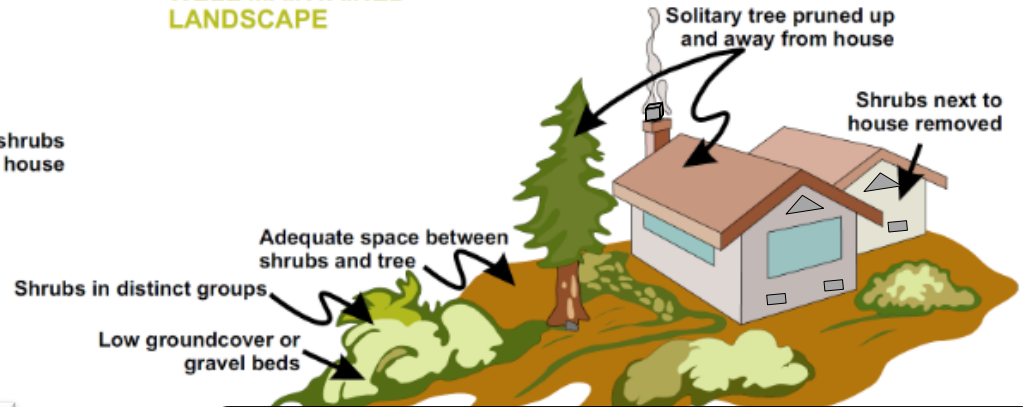
# Vegetation Management

Which one of these matches your landscape?

### POORLY MAINTAINED LANDSCAPE



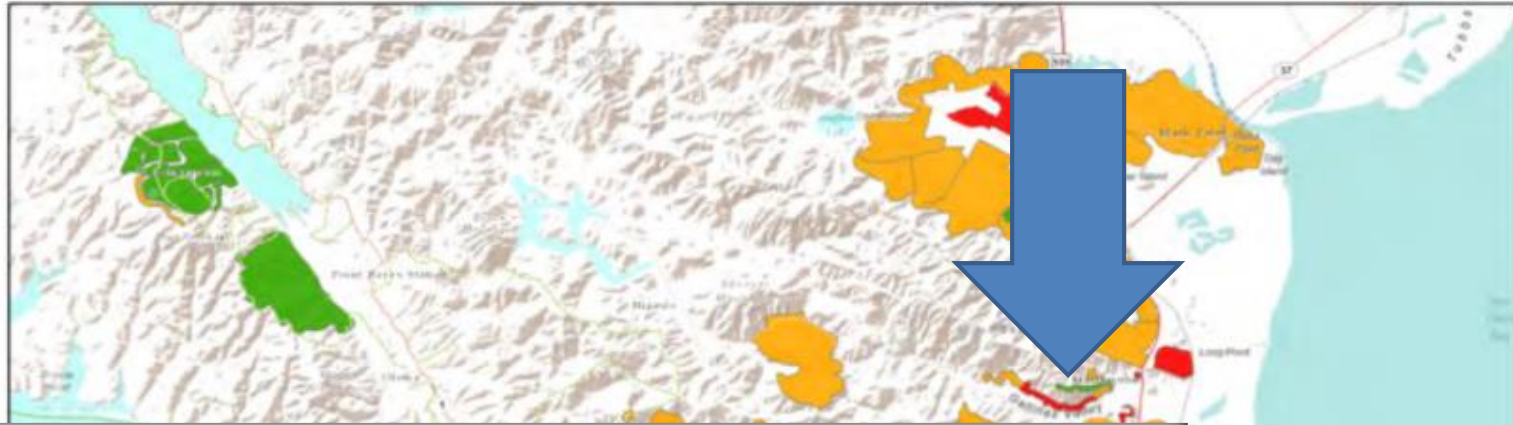
### WELL MAINTAINED LANDSCAPE



Harden Your Home.



# 2018 *New* CWPP Maps



Communities at Risk and Areas of Concern	Relative Ranking
Marin County Open Space District Lands (areas in and adjacent to neighborhoods)	Very High/High
Marin Municipal Water District (Rock Spring, Pine Mountain south gate, Sky Oaks Meadow, Deer Park Road, Sky Oaks Headquarters, Peters Dam)	High/Moderate
Marinwood/Lucas Valley (Limestone Hill area, CSA 13, Horse Hill area, Berry area, Miller Creek Road Area, Valleystone Project, Lucas Valley Estates)	Very High/High
Novato (Marin Valley, Novato North, Anderson Rowe)	Very High





# FIREWISE Planning



2



- **Building a strong team:**



1. Socialize among neighbors.
2. Recruit members.
  - Choose a representative.
3. Contact Firewise and make your new team known.



# FIREWISE Planning



## 4. Schedule a site assessment visit.

### • Site Assessment Visit with FD

- **Request** inspector to walk the area.
- Determine the **reoccurring** risks of the neighborhoods.
- Focus on general **defensible space** around all the homes.

Prepare Notes for Document.

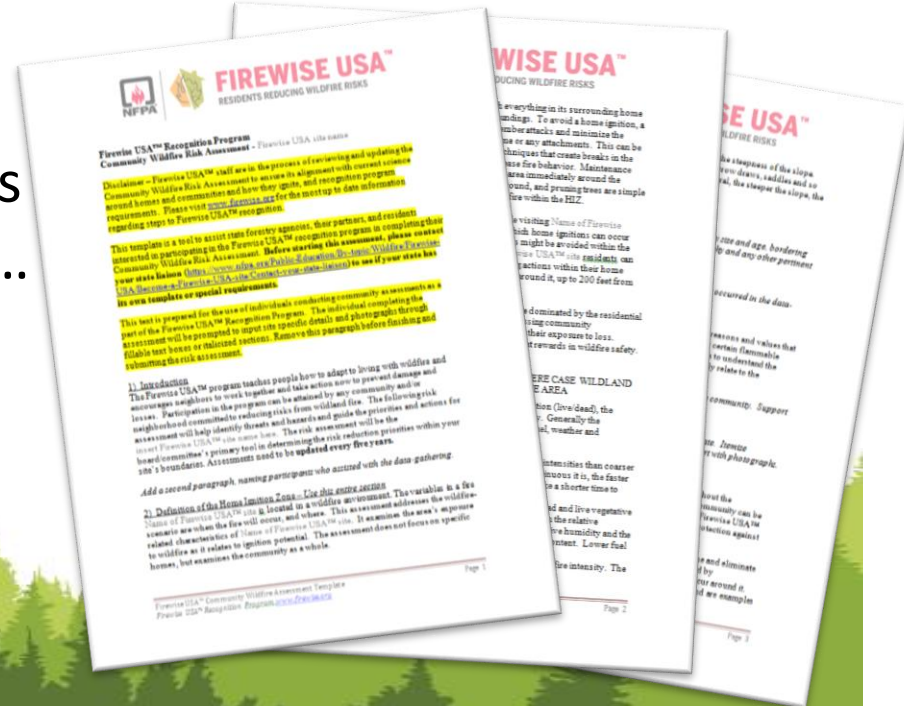
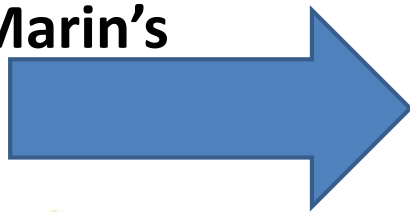




# • Site Assessment Document

- Document the area, noting hazards.
- Document the reoccurring risks of the neighborhoods.
- Provide details like:
  - Number & age of homes
  - Geographical hazards.....

Get FireSAFE Marin's endorsement.





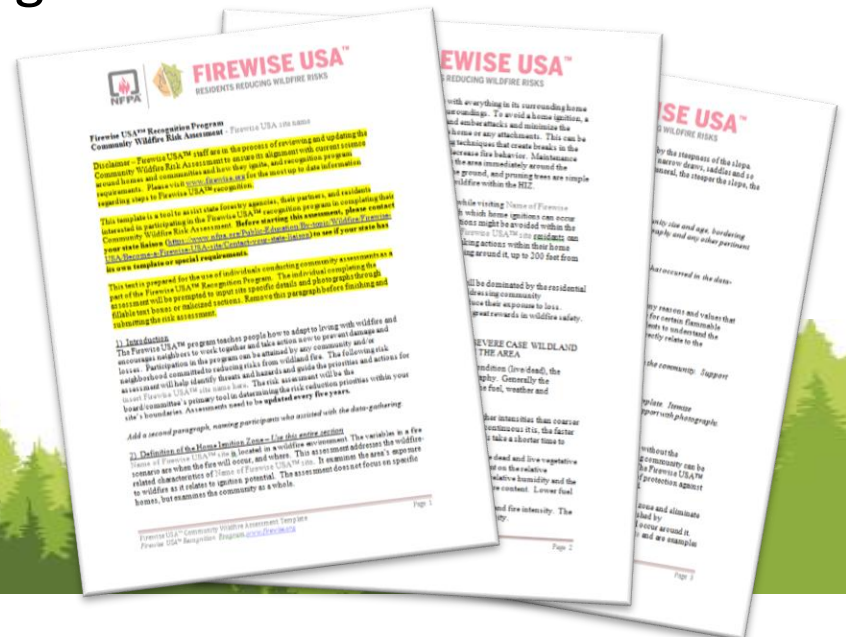
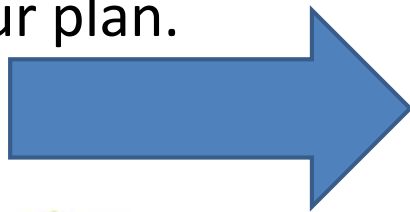
# FIREWISE Planning



## 6. Create a plan.

- Determine 5 year **action plan** with reasonable goals.
- Schedule/hold a **Firewise Day** in you community.
- Compile the annual fire mitigation efforts in the area.

Implement your plan.



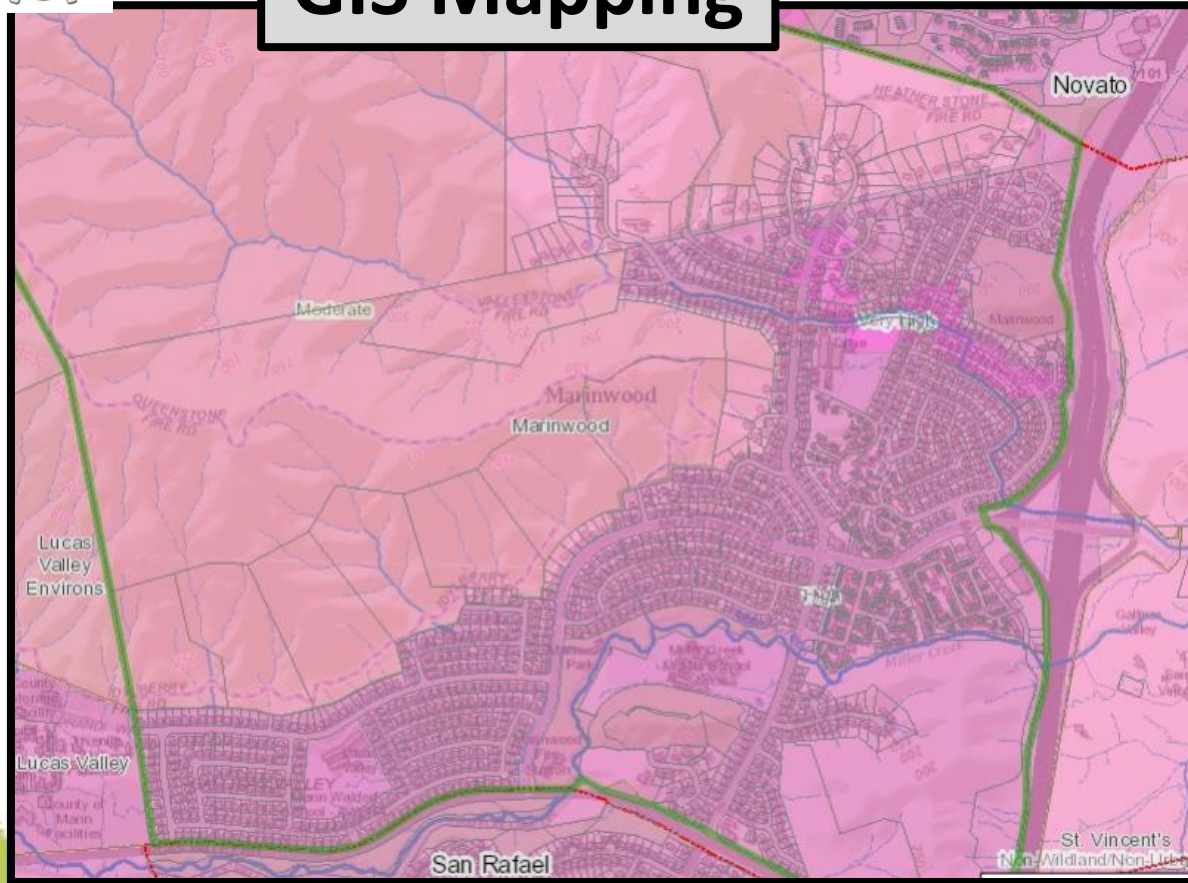


SAN RAFAEL FIRE DEPARTMENT



# FIREWISE Planning

## GIS Mapping





SAN RAFAEL FIRE DEPARTMENT

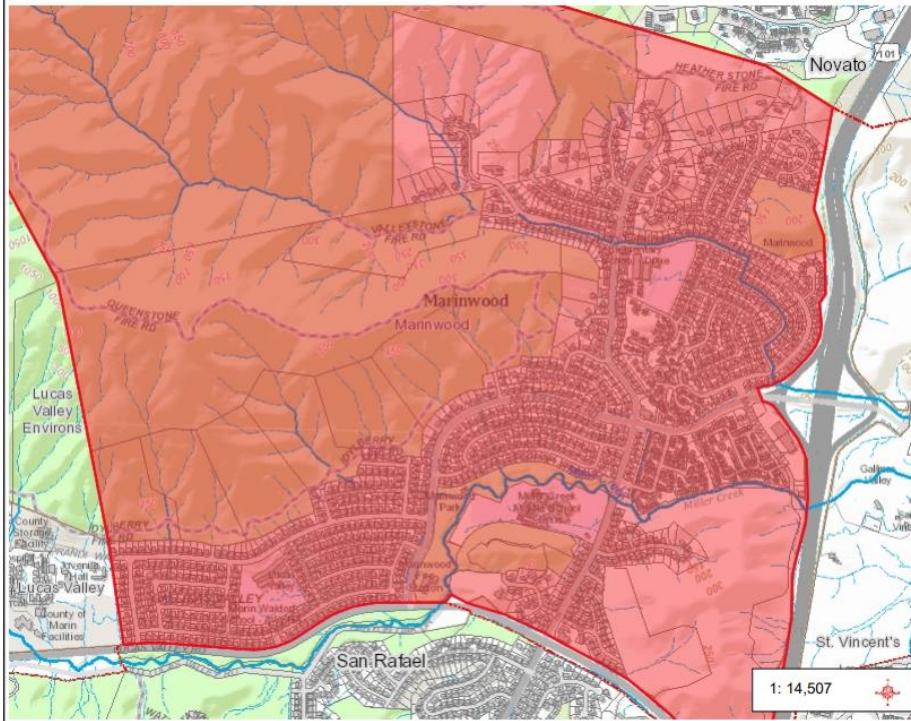


# FIREWISE Planning

## GIS Mapping



Marin Map



### Legend

- Parcel Note
  - ◻ easement
  - ◻ centerline
- Parcel
- Condominium Common Area
- Mobile Home Pad
- City
- Community
- Marin County Legal Boundary
- Other Bay Area County
- Stream - Perennial (NHD)

### Notes

Includes:  
 1708 residential parcels.  
 1750 individual parcels.  
 Totals: 1,467.25 acres

1: 14,507

2,417.9 0 1,208.96 2,417.9 Feet

NAD\_1983\_HARN\_StatePlane\_California\_III\_FIPS\_0403\_Feet  
 © Latitude Geographics Group Ltd.

This map is a user generated static output from an Internet mapping site and is for reference only. Data layers that appear on this map may or may not be accurate, current, or otherwise reliable.  
 THIS MAP IS NOT TO BE USED FOR NAVIGATION



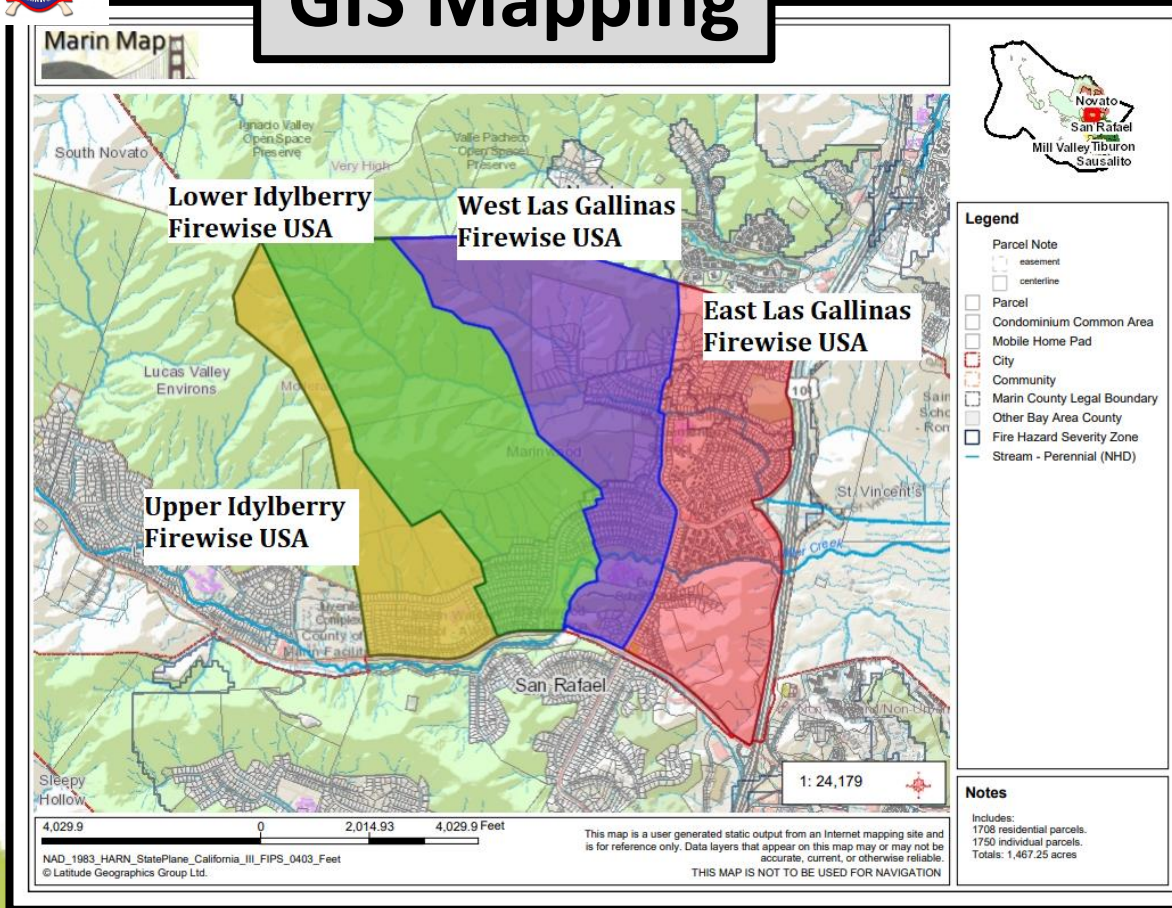


SAN RAFAEL FIRE DEPARTMENT

# FIREWISE Planning



## GIS Mapping

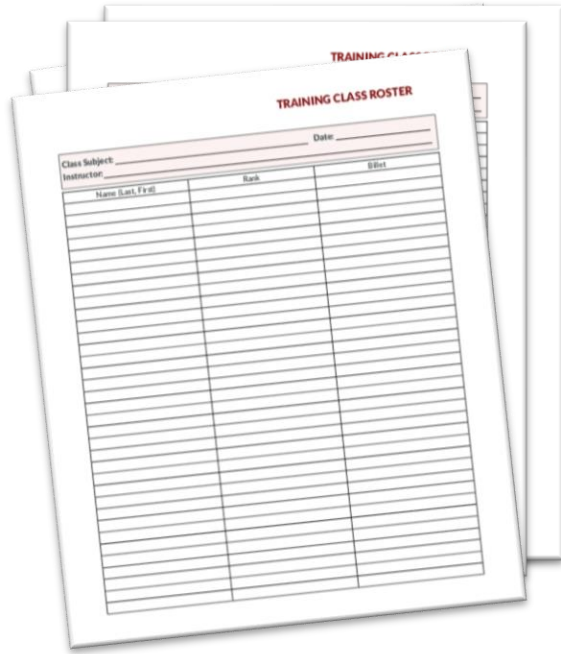




# FIREWISE Planning



## Educational Outreach



- CERT Training
- HOA presentations
- Firewise meetings



✓ Make sure to account for all participants.





# FIREWISE Planning



- **Wildfire Risk Reduction Investment**



- Qualifying expenditures, volunteer activities, grants, etc.



- One volunteer hour valued at \$24.14.



# FIREWISE Planning



## Community Projects

Work conducted on a unmapped paved road that can be accessed through Loch Haven Court in San Rafael.

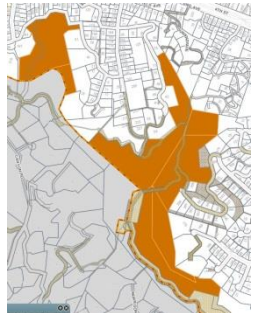


The land and road is owned by the Loch Lomond HOA.



# San Rafael Fire Vegetation Management

## Goats: 2019 locations for managing Open Space ladder Fuels



# 2019 Continued Efforts

- Fire road maintenance:
  - Identify and grade all in need.
  - Clear vegetation up and out.



-10' on each side and 13.5' vertical.



BEFORE



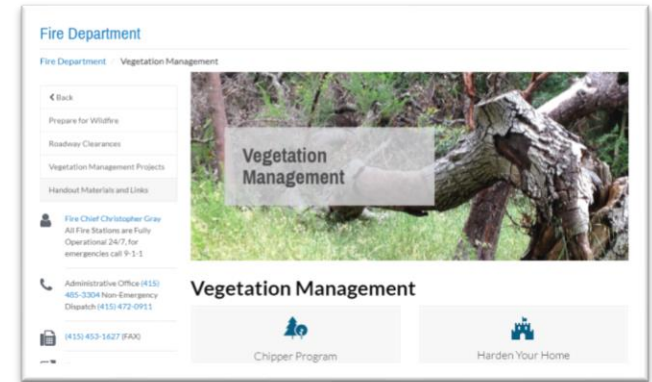
AFTER



# 2018 *New* Efforts



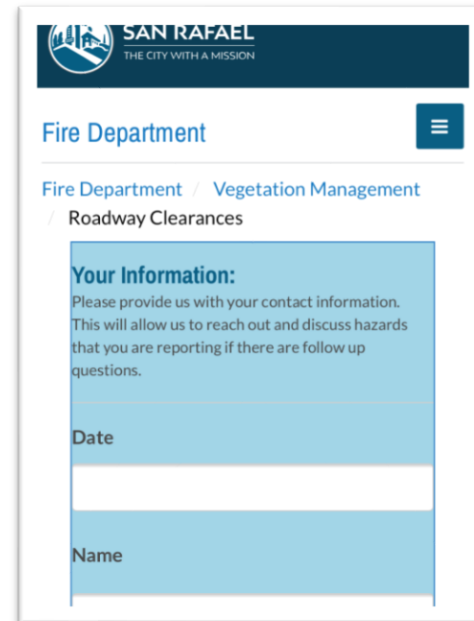
- NEW Annual Inspection Notice went out to 9,000+ WUI homes.
  - March – April 2018



- Newly updated Vegetation Management web page.

- NEW digital & online tools:
  - ‘Hazard Assessment Request Form’
  - ‘Roadway Clearances Form’

- NEW 2017-18 GIS mapping.





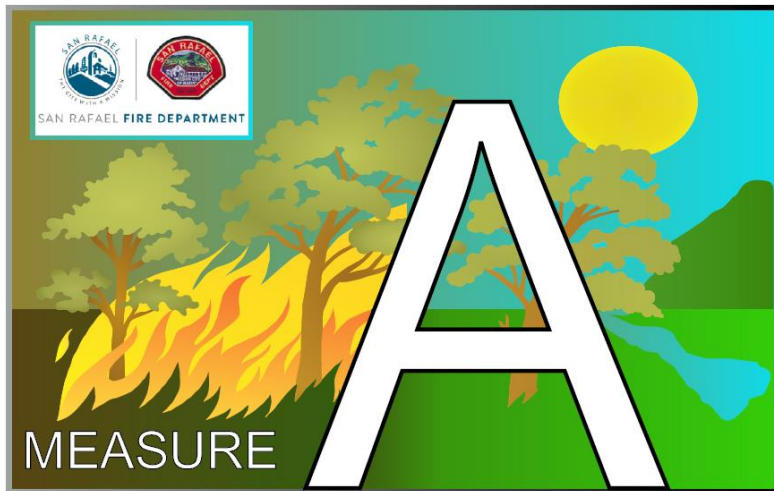
SAN RAFAEL FIRE DEPARTMENT

*Thank you.*



- Call us with any comments or concerns.

# San Rafael Fire Department Vegetation Management



Call Us TODAY:  
415-485-3308