

Notes for Figure 6H-11—Typical Application 11 Lane Closure on a Two-Lane Road with Low Traffic Volumes

Option:

1. This TTC zone application may be used as an alternate to the TTC application shown in Figure ~~6H-10~~ **6H-10(CA)** (using flaggers) when the following conditions exist:
 - a. Vehicular traffic volume is such that sufficient gaps exist for vehicular traffic that must yield.
 - b. Road users from both directions are able to see approaching vehicular traffic through and beyond the worksite and have sufficient visibility of approaching vehicles.
2. The Type B flashing warning lights may be placed on the ROAD WORK AHEAD and the ONE LANE ROAD AHEAD signs whenever a night lane closure is necessary.

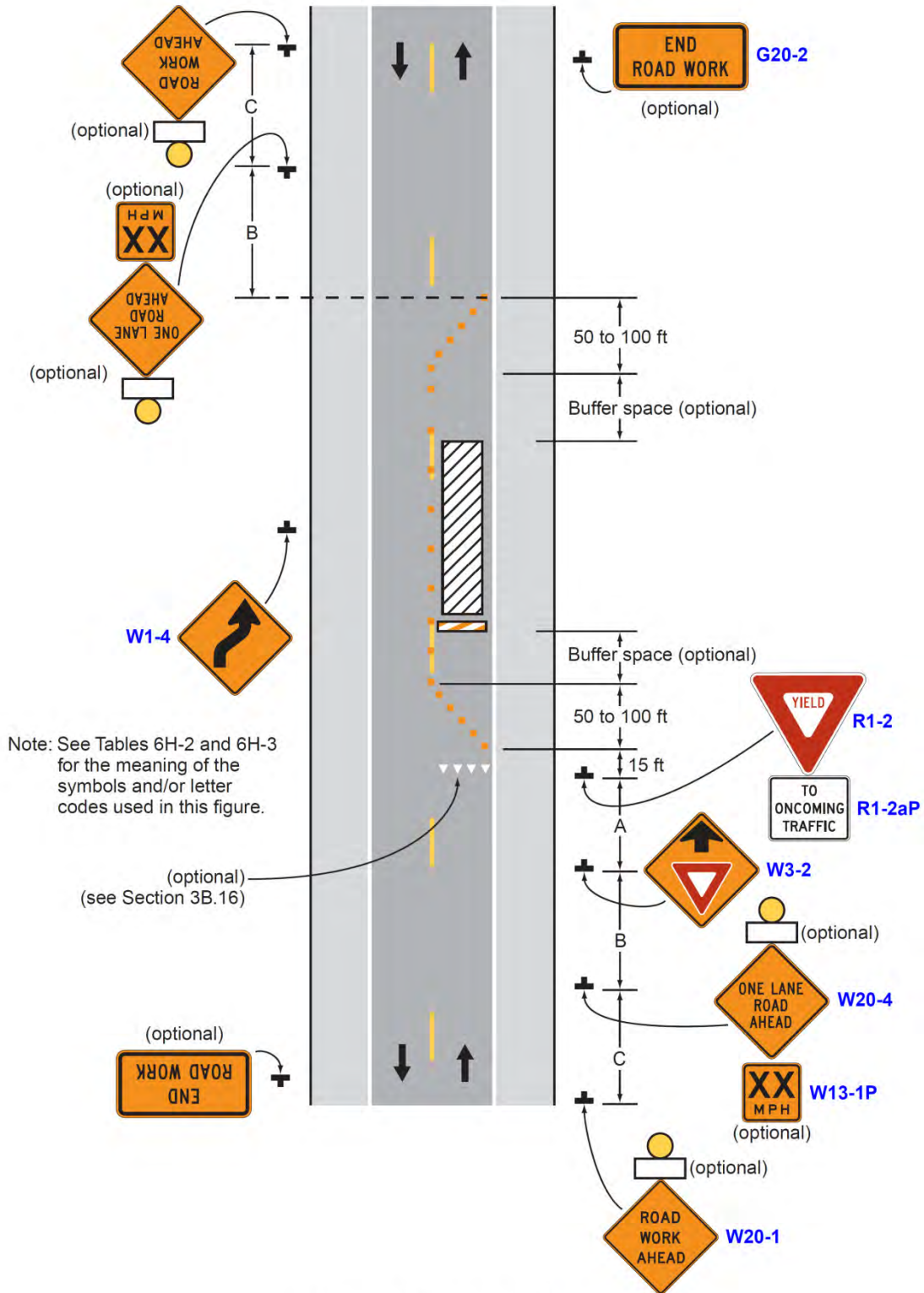
Standard:

3. **The approach to the side that is not closed shall be visible (for a distance equal to the safe passing sight distance for that approach) to the road user who must yield or stop.**

Support:

See Section 3B.02 and 6C.15.

Figure 6H-11. Lane Closure on a Two-Lane Road with Low Traffic Volumes (TA-11)



Typical Application 11