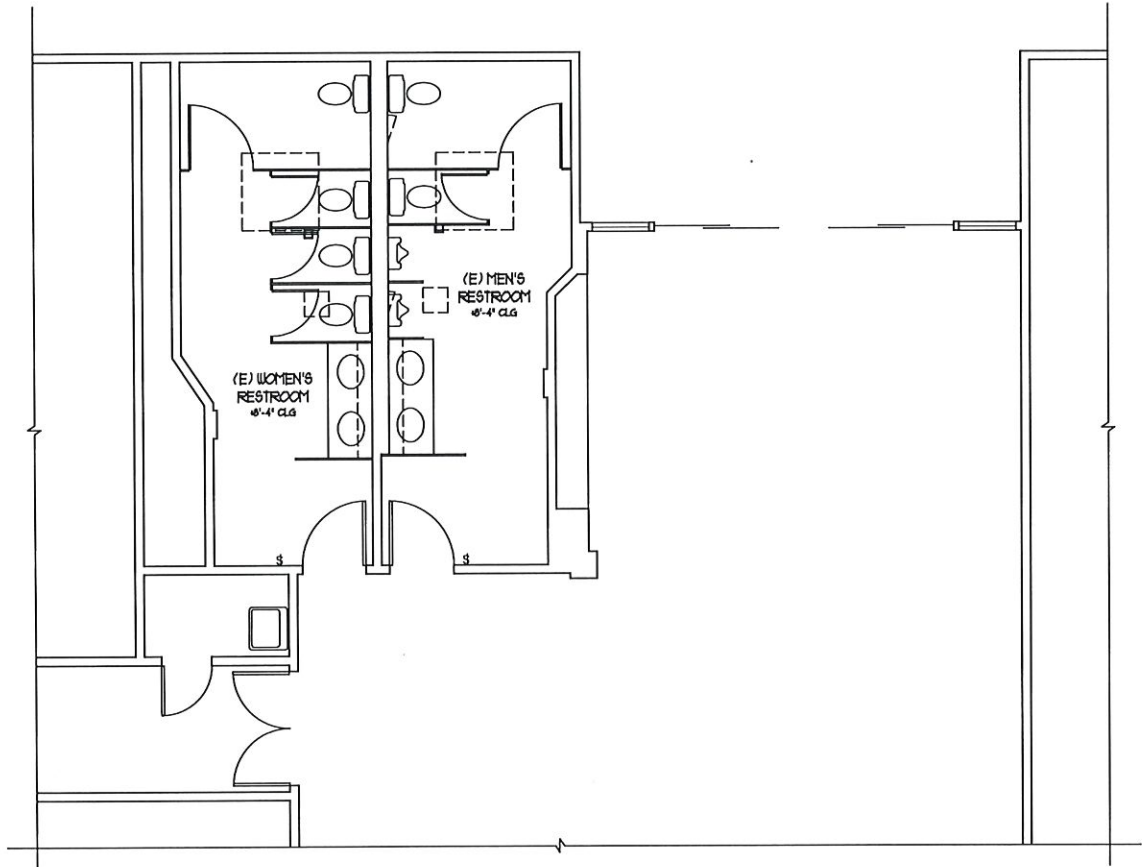


ELECTRICAL SYMBOLS LEGEND - SEE NOTES THIS SHEET

NOTE: MECHANICAL AND ELECTRICAL SYSTEMS AND FIXTURES NOT SHOWN ARE EXISTING AND SHALL REMAIN.

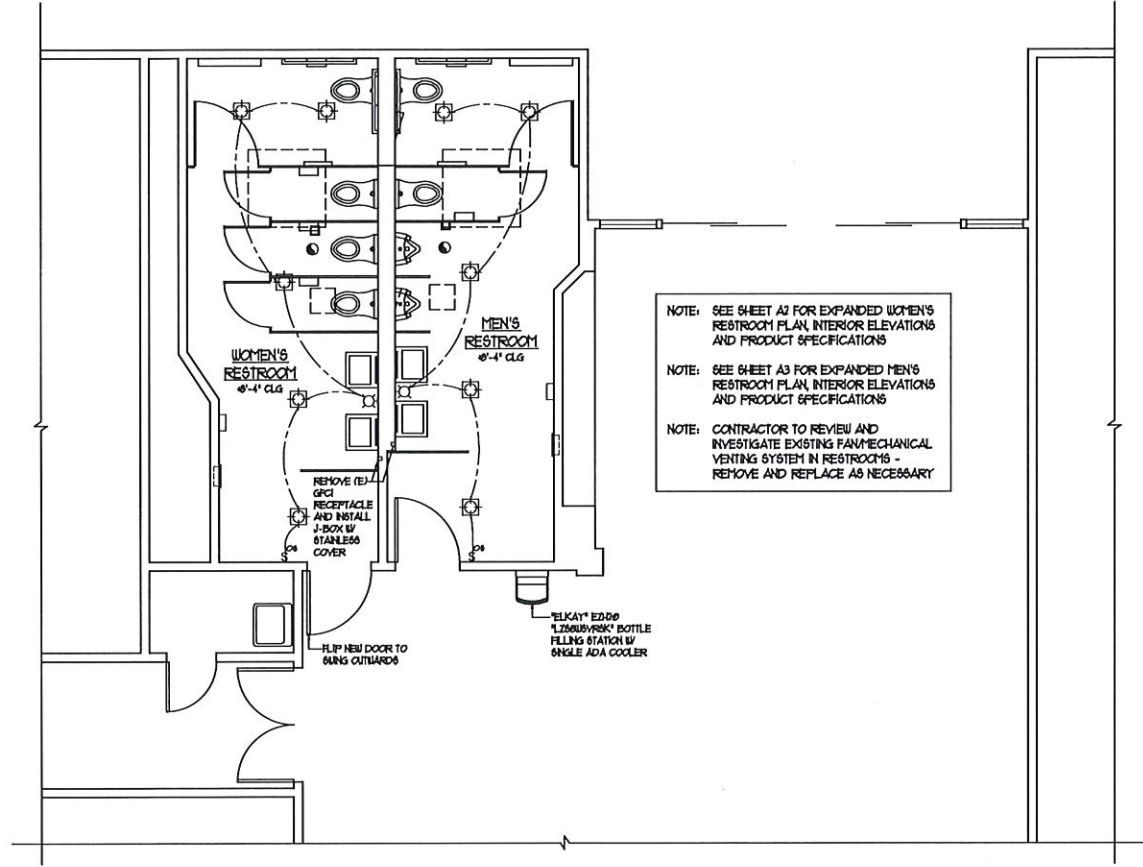
© ALL DRAWINGS AND WRITTEN MATERIAL APPEARING HEREIN CONSTITUTE THE ORIGINAL AND UNPUBLISHED WORK OF STEWART K. SUMMERS, ARCHITECT AND THE SAME MAY NOT BE DUPLICATED, COPIED, OR DISSEMINATED WITHOUT THE WRITTEN CONSENT OF STEWART K. SUMMERS, ARCHITECT

REVISIONS	DATE	BY



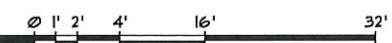
EXISTING BATHROOM PLAN

SCALE: 1/4" = 1'-0"



NEW ADA BATHROOM FLOOR & UTILITY PLANS

SCALE: 1/4" = 1'-0"



**City of San Rafael
 Community Center ADA Bathrooms**
 618 B Street
 San Rafael, CA 94901
 A.P. 013-061-56

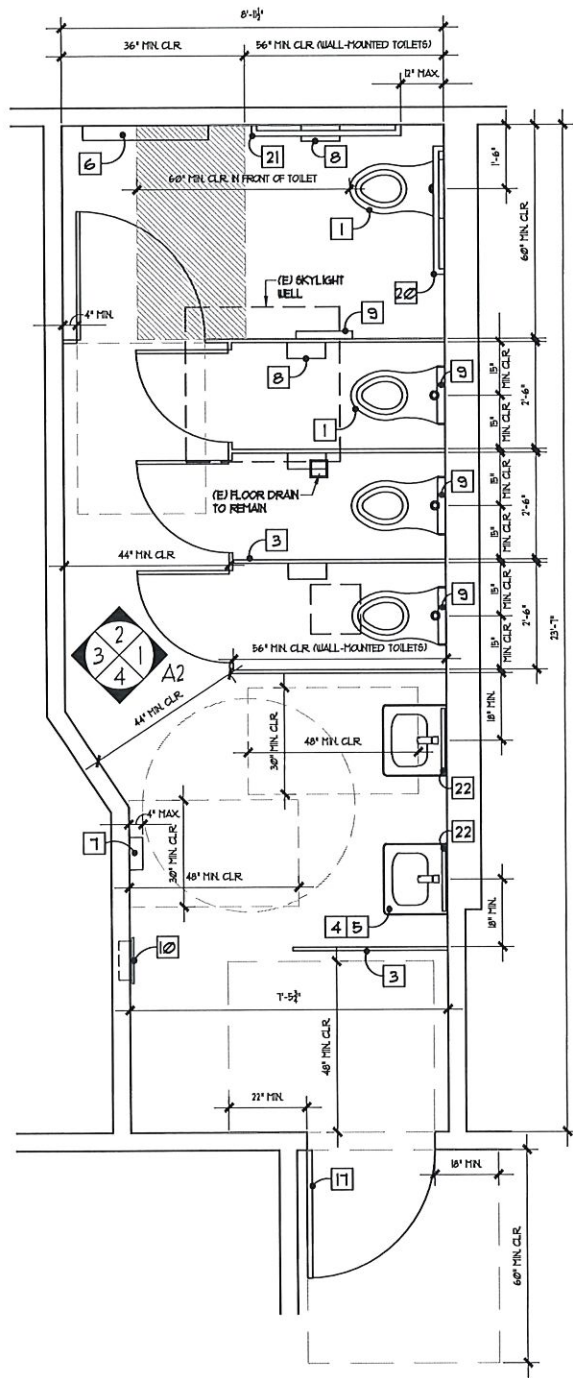


EXISTING & PROPOSED ADA BATHROOM PLANS

REVIEW THE DRAWINGS CAREFULLY. DO NOT SCALE THE DRAWINGS. ANY DISCREPANCIES IN DIMENSIONS AND DETAILS SHALL BE BROUGHT TO THE IMMEDIATE ATTENTION OF STEWART K. SUMMERS, ARCHITECT

DATE:	1/17/18
SCALE:	AS NOTED
DRAWN:	SKS
JOB NO.	
SHEET NO:	

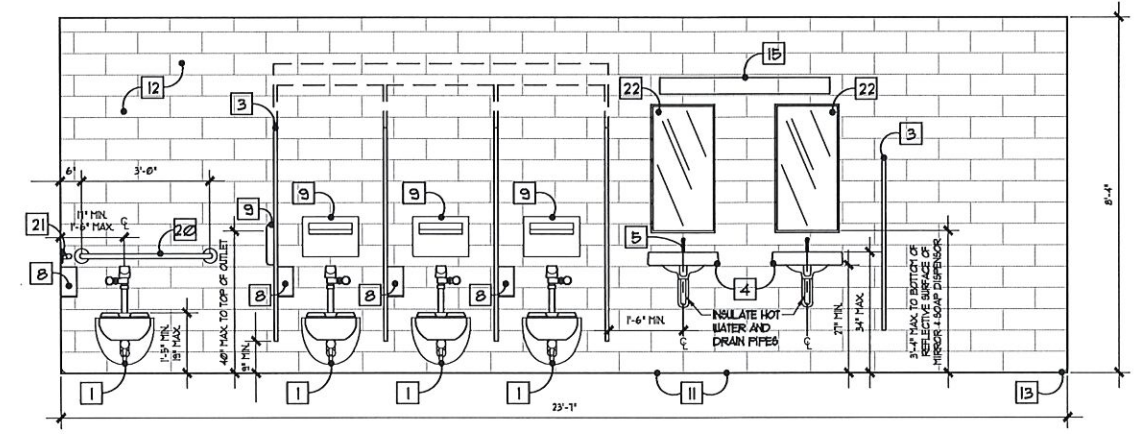
A1



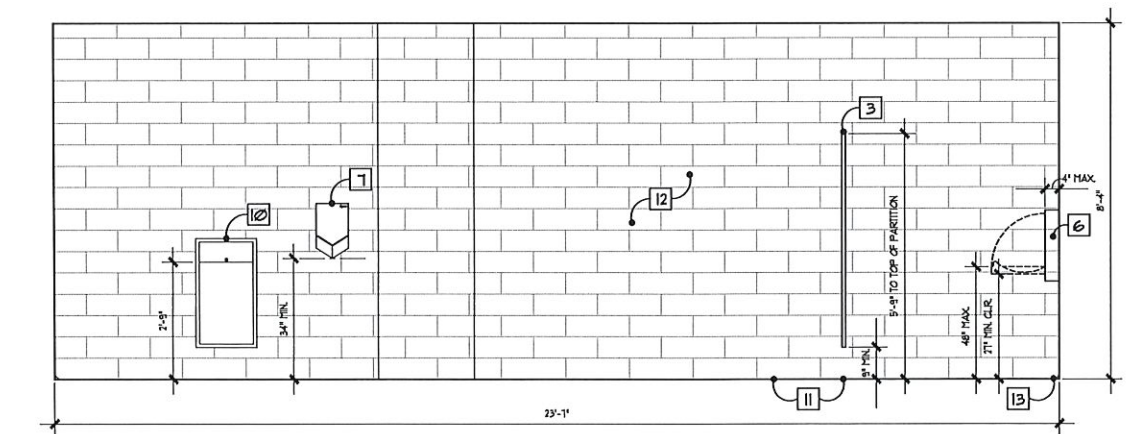
ENLARGED FLOOR PLAN

#	QNTY.	ITEM TYPE	BRAND NAME	PRODUCT NUMBER	DESCRIPTION
1	6	TOILET	GLOAN	WE15-2482/101-16/1 ECO5 DF	FIXTURE AND FLUSHMETER COMBINATION
2	2	URNAL	GLOAN	WE15-1000/1401-02/5 ECO5	STANDARD WASHDOWN URINAL COMBINATION
3	-	PARTITIONS	BOBRICK	DURALINESERIES 1002/102	COLOR: 'FROSTY WHITE' - COMPACT LAMINATE PARTITIONS AND DIVIDERS - FLOOR-ANCHORED & OVERHEAD-BRACED
4	4	SNK	KOHLER	'SCHO' K-2004-H	WALL-MOUNT W/ SINGLE FAUCET HOLE AND RIGHT HAND SOAP DISPENSER HOLE
5	4	FAUCET	GLOAN	'OPTIMA' EBF-101-4-ADM	BATTERY POWERED, SENSOR ACTIVATED ELECTRONIC HAND WASHING FAUCET
6	2	CHANGING TABLE	KOALA KARE	KB10-501M	HORIZONTAL, STAINLESS STEEL, WALL-MOUNTED BABY CHANGING STATION
7	2	HAND DRYER	DYSON	'AIRBLADE V' HJ02	COLOR: 'SPRAYED NICKEL'
8	6	TOILET PAPER	BOBRICK	B-2930	SINGLE JUMBO-ROLL SURFACE-MOUNTED TOILET TISSUE DISPENSER
9	6	SEAT COVER	BOBRICK	'CONTURASERIES' B-4221	SURFACE-MOUNTED SEAT-COVER DISPENSER
10	2	TRASH	BOBRICK	'CLASSICSERIES' B-3644	RECESSED WASTE RECEPTACLE
11	-	FLOOR TILE	DALTILE	PARKWOOD BROWN	COLOR: 'PARKWOOD BROWN' - 1'x20\"/>

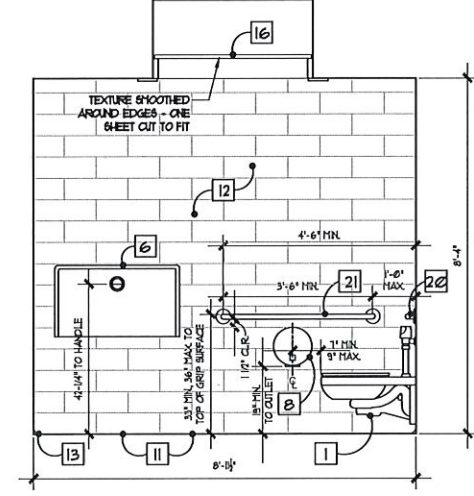
NOTE: SEE SHEET A4 FOR ADA COMPLAINT SPECIFICATIONS & DETAILS



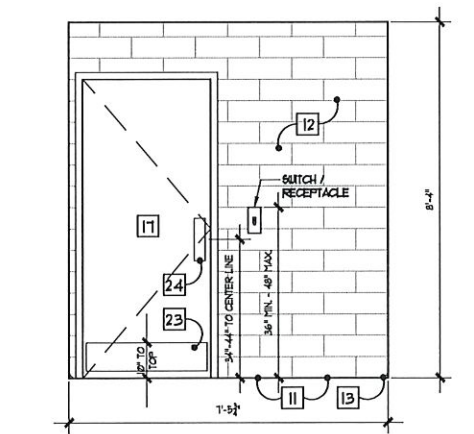
1



3



2



4



ALL DRAWINGS AND WRITTEN MATERIAL APPROVED HEREIN CONSTITUTE THE ORIGINAL AND UNREPEATED WORK OF STEWART K. SUMMERS, ARCHITECT AND THE SAME MAY NOT BE DUPLICATED, USED OR REPRODUCED WITHOUT THE WRITTEN CONSENT OF STEWART K. SUMMERS, ARCHITECT

REVISIONS	DATE	BY

City of San Rafael
 Community Center ADA Bathrooms
 618 B Street
 San Rafael, CA 94901
 A.P. 013-061-56

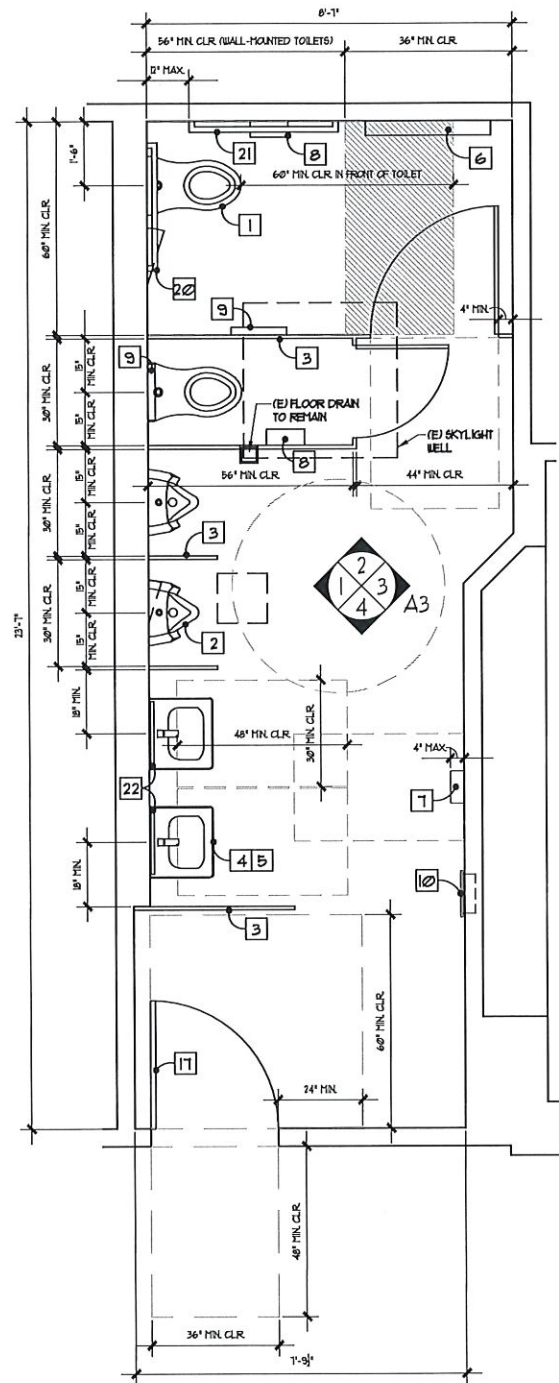


WOMEN'S RESTROOM PLAN & ELEVATIONS

REVIEW THE DRAWINGS CAREFULLY. DO NOT SCALE THE DRAWINGS. ANY DISCREPANCIES IN DIMENSIONS AND DETAILS SHALL BE BROUGHT TO THE IMMEDIATE ATTENTION OF STEWART K. SUMMERS, ARCHITECT

DATE: 1/17/18
 SCALE: AS NOTED
 DRAWN: SKS
 JOB NO.
 SHEET NO:

A2



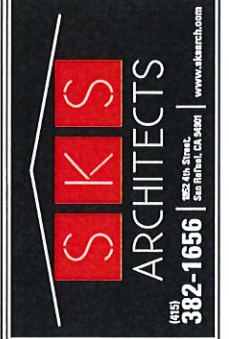
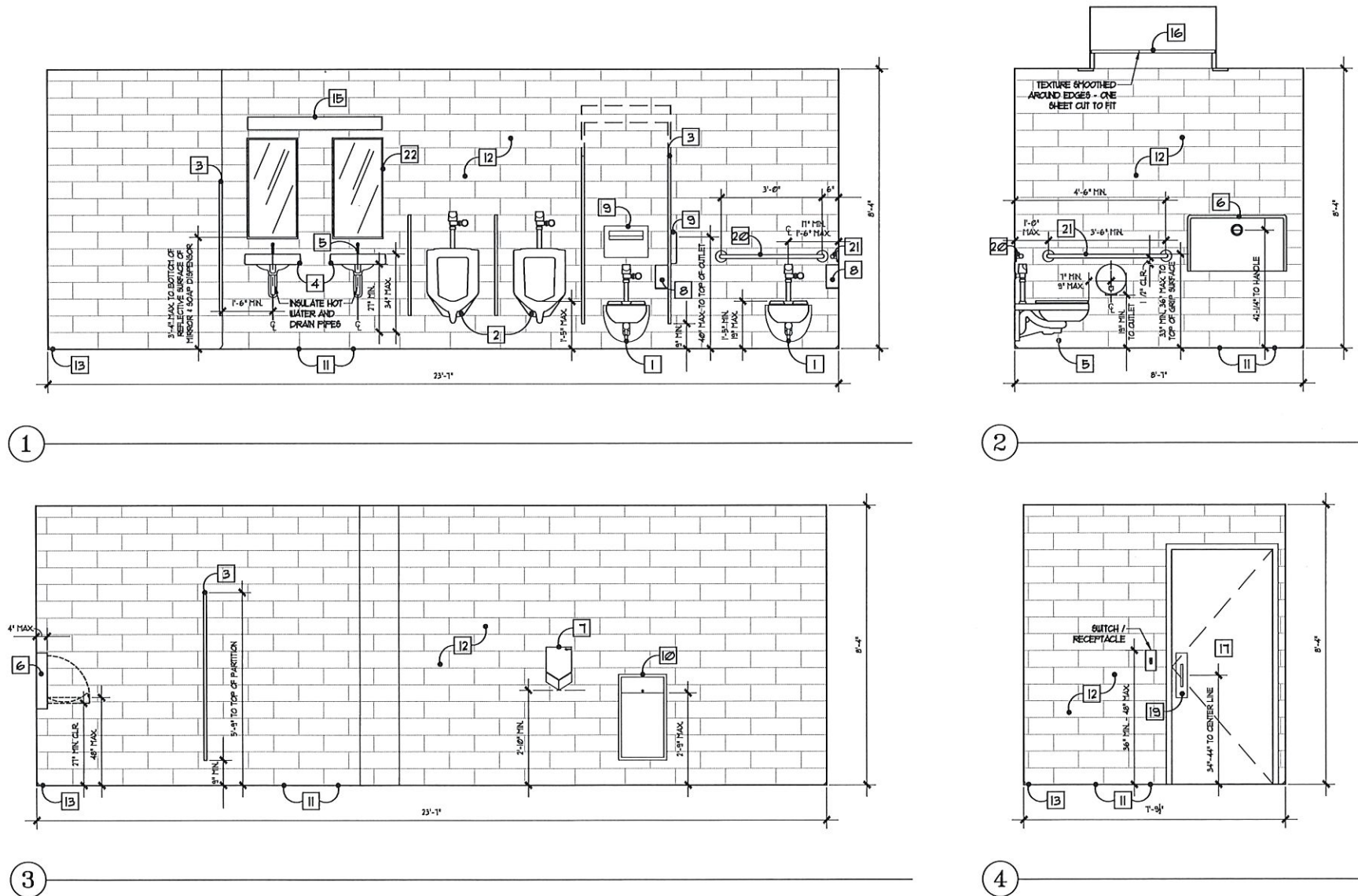
ENLARGED FLOOR PLAN

ADA RESTROOM PLAN - MEN'S RESTROOM

SCALE: 1/2" = 1'-0"

#	QNTY.	ITEM TYPE	BRAND NAME	PRODUCT NUMBER	DESCRIPTION
1	6	TOILET	GLOAN	WE15-2482/101-16/11 ECOS DF	FIXTURE AND FLUSHMETER COMBINATION
2	2	URNAL	GLOAN	WE15-1000/1401-01/5 ECOS	STANDARD WASHDOWN URINAL COMBINATION
3	-	PARTITIONS	BOBRICK	DURALINE SERIES 1002/102	COLOR: 'FROSTY WHITE' - COMPACT LAMINATE PARTITIONS AND DIVIDERS - FLOOR-ANCHORED & OVERHEAD-BRACED
4	4	SNK	KOHLER	'SCHO' K-2084-H	WALL-MOUNT W/ SINGLE FAUCET HOLE AND RIGHT HAND SOAP DISPENSER HOLE
5	4	FAUCET	GLOAN	'OPTIMA' EBF-10T-4-ADM	BATTERY POWERED, SENSOR ACTIVATED ELECTRONIC HAND WASHING FAUCET
6	2	CHANGING TABLE	KOALA KARE	KB100-50UM	HORIZONTAL, STAINLESS STEEL, WALL-MOUNTED BABY CHANGING STATION
7	2	HAND DRYER	DYSON	'AIRBLADE V' HJ02	COLOR: 'SPRAYED NICKEL'
8	6	TOILET PAPER	BOBRICK	B-2890	SINGLE JUMBO-ROLL SURFACE-MOUNTED TOILET TISSUE DISPENSER
9	6	SEAT COVER	BOBRICK	'CONTURASERIES' B-4221	SURFACE-MOUNTED SEAT-COVER DISPENSER
10	2	TRASH	BOBRICK	'CLASSICSERIES' B-3644	RECESSED WASTE RECEPTACLE
11	-	FLOOR TILE	DALTILE	PARKWOOD BROWN	COLOR: 'PARKWOOD BROWN' - 1'x20" CERAMIC TILE W/ WOOD GRAIN APPEARANCE
12	-	WALL TILE	MARAZZI	DEVELOPED BY NATURE	COLOR: 'CHENILLE' - 6"x8" CERAMIC WALL TILE
13	-	COVE	SCHLUTER	DILEX-A4K	COVE-SHAPED PROFILE FOR CLEAN, MAINTENANCE-FREE TRANSITIONS
14	8	RECESSED LIGHT	ELCO	EL160/CA / ET133U	6" LINE VOLTAGE HOUSING FOR LED INSERTS / 6" BAFFLE TRIM - COLOR: 'WHITE'
15	2	WALL LIGHT	NEO-RAY	DEFNE 3	LINEAR WALL-MOUNTED, LED, DIRECT LIGHT ABOVE SINKS
16	1	SKYLIGHT COVER	ZFORM	VARIA ECORE6N	TEXTURE: 'FRACTAL' - 1' GAUGE MOUNTED INSIDE SKYLIGHT WELL - COLOR: 'POLAR D04'
17	2	DOOR	BRPSON	4320	FLUSH FIRE-RATED SOLID CORE DOOR
18	2	CLOSER	GLOBAL DOOR CONTROLS	TC4300-DJ	COLOR: 'DURONOTIC' - HEAVY DUTY COMMERCIAL ADA DOOR CLOSER
19	2	DOOR HANDLE	SCHLAGE	8311-35X05-605	FINISH: 'BRIGHT BRASS' - 35" x 5" FULL PLATE FOR DOOR
20	2	GRAB BAR	BOBRICK	B-5806 x 36	36" LONG STAINLESS STEEL GRAB BAR WITH 1-1/4" DIAMETER
21	2	GRAB BAR	BOBRICK	B-5806 x 42	42" LONG STAINLESS STEEL GRAB BAR WITH 1-1/4" DIAMETER
22	4	MIRROR	BOBRICK	B-1658 2436	24" x 36" TEMPERED GLASS MIRROR WITH STAINLESS STEEL CHANNEL FRAME
23	2	KICK PLATE	SCHLAGE	8400-8X4-605	FINISH: 'BRIGHT BRASS' - 8" x 34" KICK PLATE FOR DOOR
24	2	PUSH PLATE	SCHLAGE	8100-35X05-605	FINISH: 'BRIGHT BRASS' - 35" x 5" PUSH PLATE FOR DOOR
25	6	DOOR HINGES	SCHLAGE	1010-605	FINISH: 'BRIGHT BRASS' - 4" SQUARE HINGE - INSTALL (3) AT EACH DOOR

NOTE: SEE SHEET A4 FOR ADA COMPLIANT SPECIFICATIONS & DETAILS



© ALL DRAWINGS AND WRITTEN MATERIAL APPEARING HEREON CONSTITUTE THE ORIGINAL AND UNPUBLISHED WORK OF SKS ARCHITECTS AND NO PART MAY BE REPRODUCED OR TRANSMITTED IN ANY FORM OR BY ANY MEANS WITHOUT THE WRITTEN CONSENT OF SKS ARCHITECTS.

REVISIONS	DATE	BY

City of San Rafael
 Community Center ADA Bathrooms
 618 B Street
 San Rafael, CA 94901
 A.P. 013-061-56



MEN'S RESTROOM PLAN & ELEVATIONS

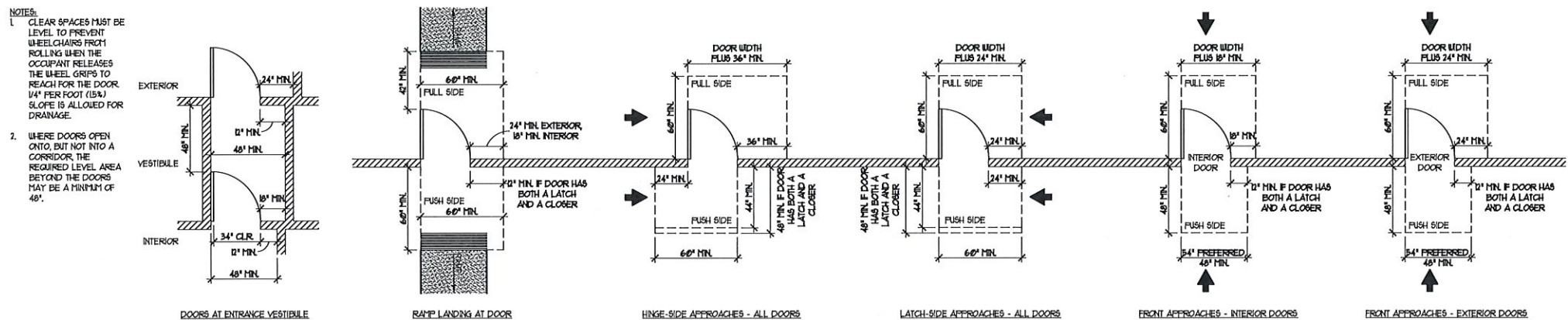
REVIEW THE DRAWINGS CAREFULLY. DO NOT SCALE THE DRAWINGS. ANY DISCREPANCIES IN DIMENSIONS AND DETAILS SHALL BE BROUGHT TO THE IMMEDIATE ATTENTION OF STEWART K. SUMMERS, ARCHITECT

DATE: 1/17/18
 SCALE: AS NOTED
 DRAWN: SKS
 JOB NO.
 SHEET NO:

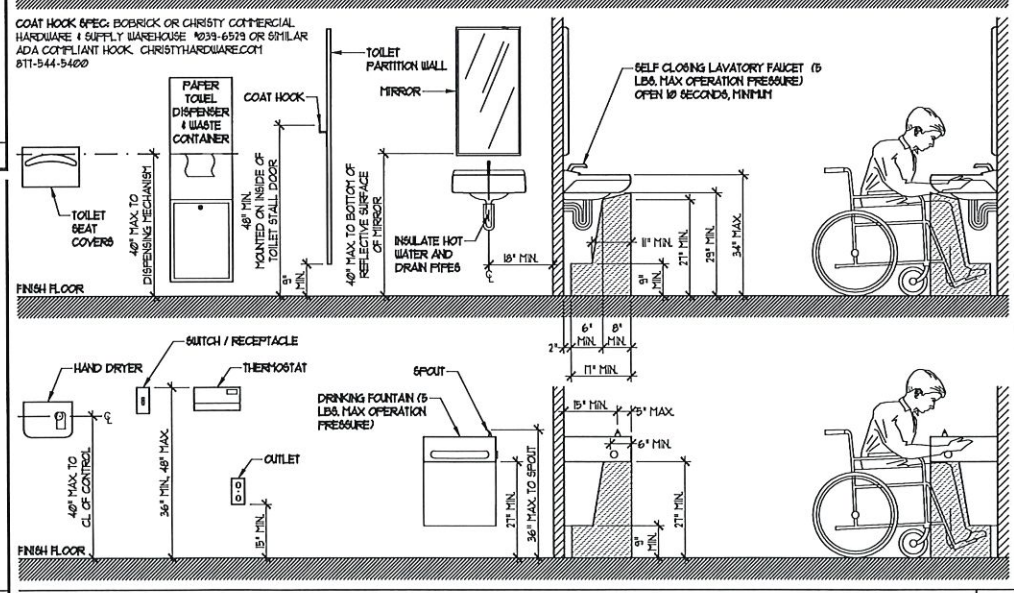
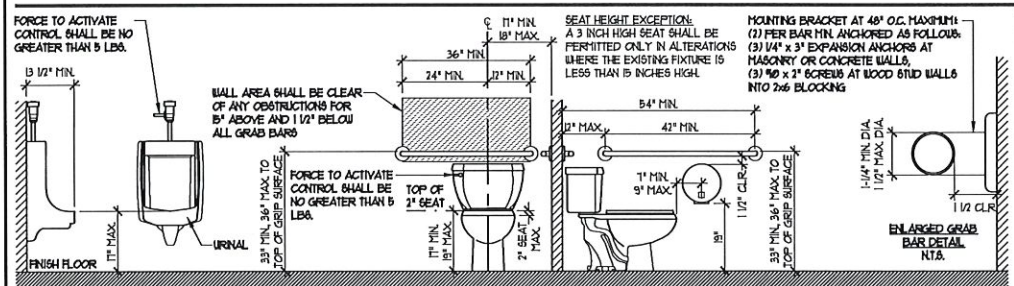
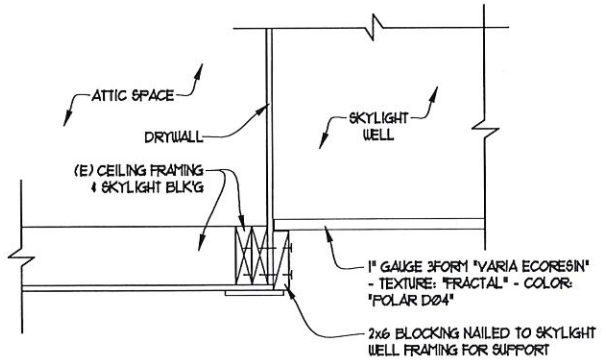
A3

ALL DIMENSIONS AND WRITTEN MATERIAL APPROVED HEREIN CONSTITUTE THE ORIGINAL AND UNREPEATED WORK OF STEWART K. SUMMERS, ARCHITECT AND THE SAME MAY NOT BE DUPLICATED, COPIED, OR DISCLOSED WITHOUT THE WRITTEN CONSENT OF STEWART K. SUMMERS, ARCHITECT

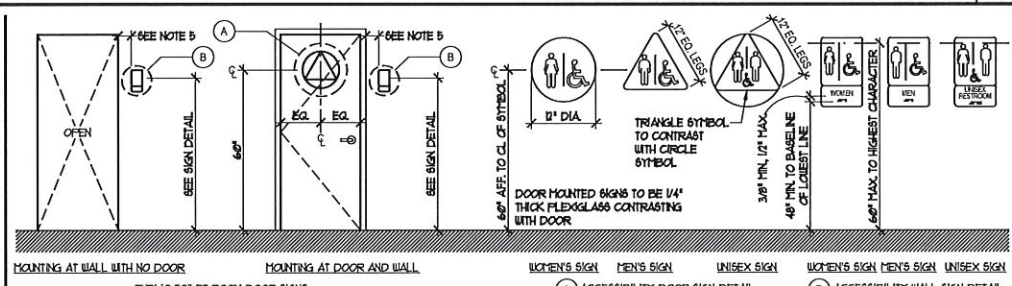
REVISIONS	DATE	BY



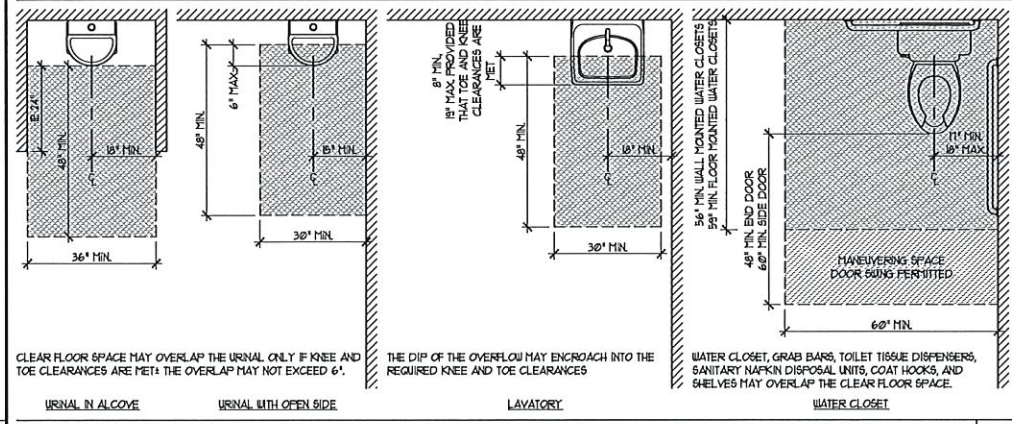
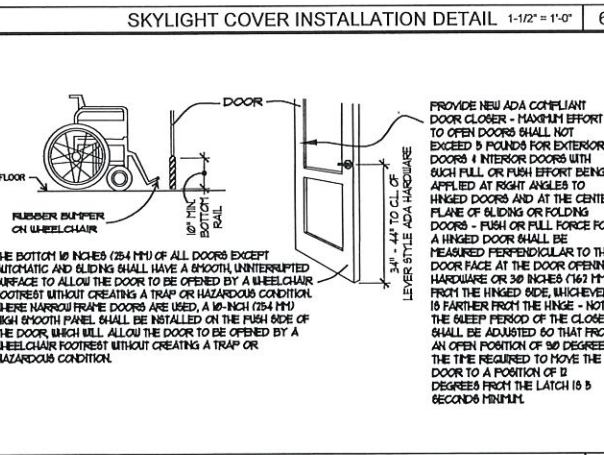
MANEUVERING CLEARANCES AT DOORS 1/4" = 1'-0" 3



FIXTURES AND ACCESSORIES CLEARANCES 1/2" = 1'-0" 4



ACCESSIBLE TOILET DOOR SIGNS 3/8" = 1'-0" 2



City of San Rafael
 Community Center ADA Bathrooms
 618 B Street
 San Rafael, CA 94901
 AP: 013-061-56



ADA DETAILS

REVIEW THE DRAWINGS CAREFULLY. DO NOT SCALE THE DRAWINGS. ANY DISCREPANCIES IN DIMENSIONS AND DETAILS SHALL BE BROUGHT TO THE IMMEDIATE ATTENTION OF STEWART K. SUMMERS, ARCHITECT

DATE: 1/17/18
 SCALE: AS NOTED
 DRAWN: SKS
 JOB NO.
 SHEET NO:

A4