



File No. 16.01.292

September 12, 2019

**ADDENDUM NO. 1
SOUTHERN HEIGHTS AND COURTRIGHT
RETAINING WALL DESIGN**

THE CHANGES IN THIS ADDENDUM SHALL BE INCLUDED IN THE RFP AND THIS ADDENDUM SHALL BE PART OF THE RFP DOCUMENTS. ALL CONDITIONS NOT AFFECTED BY THIS ADDENDUM SHALL REMAIN UNCHANGED.

Please find enclosed with this addendum a conceptual design plan outlining the intent and scope of work related to this project. The design consultant will need to perform all elements of the design, or retain subconsultants as necessary, such that a single set of construction drawings can be advertised including, but not limited to, storm drain, resurfacing, concrete V-ditch, clearing and grubbing, utility coordination, and the retaining wall. Any other work not specifically identified on the enclosed conceptual design plan, but which is necessary in order to prosecute the work, is included in this Request for Proposals. Proposers should note that no work on the private driveway is included as part of the City's project.

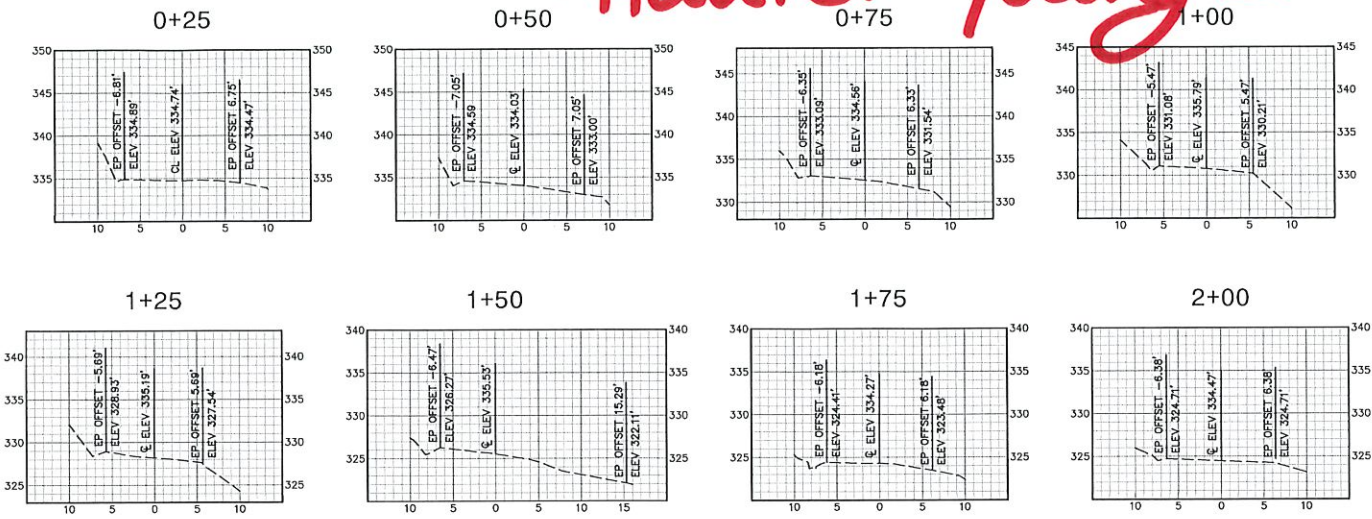
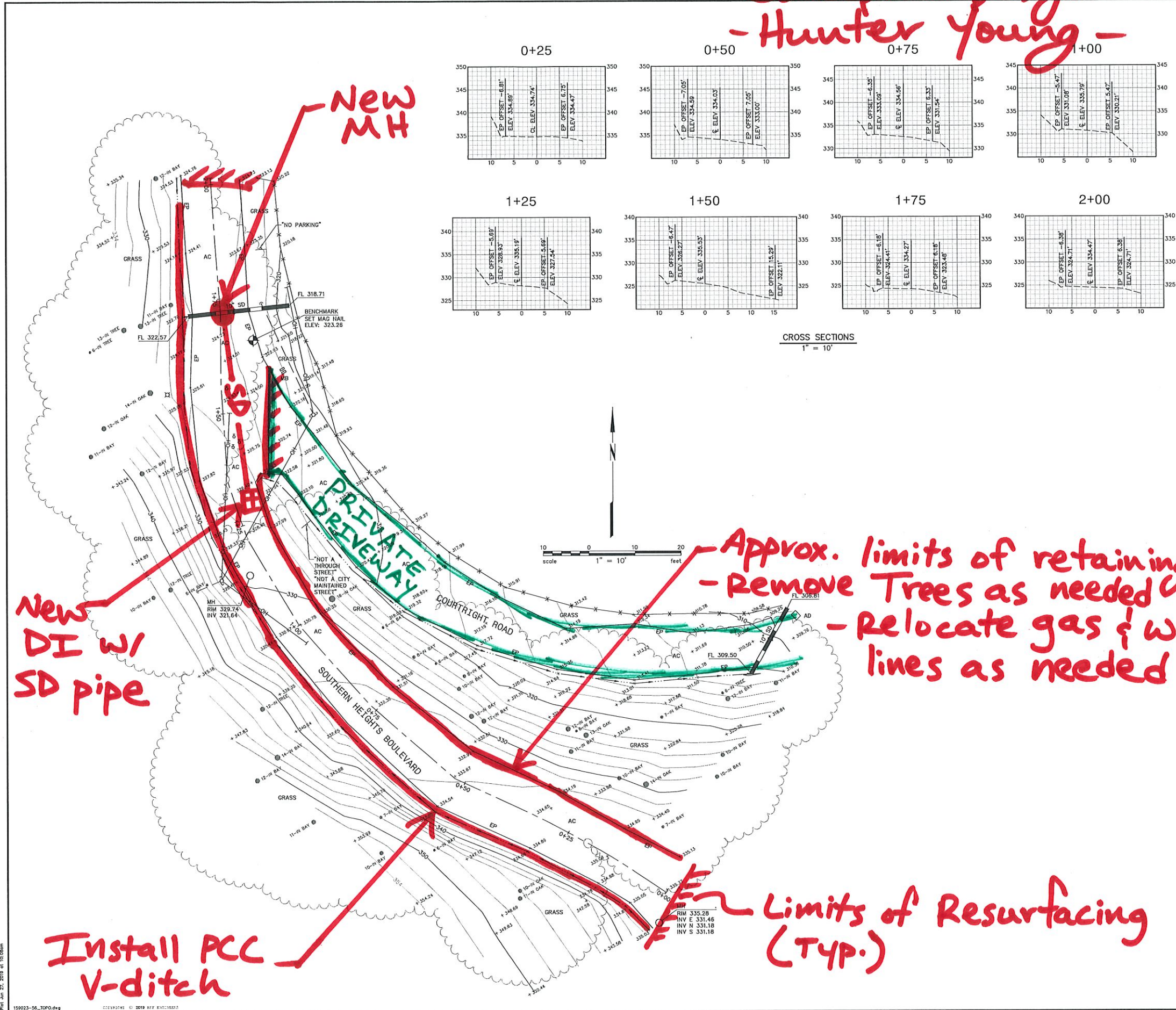
By: 
Hunter Young
Senior Civil Engineer

Enclosure: Conceptual Design Plan

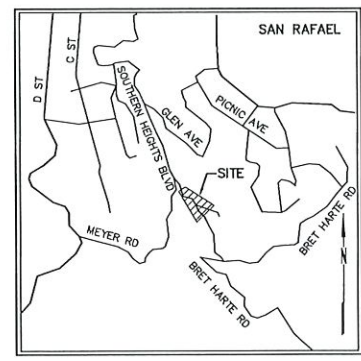
Conceptual Design 9/12/19

- Hunter Young -

© BKF ENGINEERS



CROSS SECTIONS
1" = 10'



VICINITY MAP
NOT TO SCALE

SYMBOLS & LEGEND

- EXISTING**
- BENCHMARK
 - VALVE
 - FIRE HYDRANT
 - SIGN
 - GUY ANCHOR
 - UTILITY POLE
 - TREE
 - FLOW LINE
 - WIRE FENCE
 - STORM DRAIN
 - OVERHEAD UTILITY LINE

ABBREVIATIONS

- AC ASPHALT CONCRETE
- AD AREA DRAIN
- C CENTERLINE
- E EAST
- ELEV ELEVATION
- EP EDGE OF PAVEMENT
- FL FLOWLINE
- MB BOTTOM INSIDE OF PIPE
- MB MAILBOX
- MH MANHOLE
- N NORTH
- OH OVERHEAD UTILITY LINE
- S SOUTH
- SD STORM DRAIN
- #-IN DIAMETER OF TREE TRUNK (INCHES)

TOPOGRAPHIC NOTES

UNAUTHORIZED CHANGES & USES: THE PROFESSIONAL PREPARING THIS MAP WILL NOT BE RESPONSIBLE FOR, OR LIABLE FOR, UNAUTHORIZED CHANGES TO OR USES OF THIS MAP. CHANGES TO THIS MAP MUST BE REQUESTED IN WRITING AND MUST BE APPROVED BY THE PROFESSIONAL.

THE LOCATIONS OF EXISTING UNDERGROUND FACILITIES SHOWN ON THESE DRAWINGS ARE APPROXIMATE AND ARE BASED ON OBSERVED TOPOGRAPHIC SURFACE FEATURES. THE PROFESSIONAL PREPARING THIS MAP ASSUMES NO RESPONSIBILITY FOR THE ACCURACY OF THESE FACILITIES OR FOR THE INADVERTENT OMISSION OF RELATED INFORMATION.

TREE DIAMETERS ARE MEASURED AT CHEST HEIGHT (48"). DRIPLINE DIAMETERS AND TREE SPECIES ARE APPROXIMATE ONLY AND SHOULD BE VERIFIED BY A CERTIFIED ARBORIST.

BENCHMARK: MAG NAIL, LOCATION SHOWN HEREON, ELEVATION 323.26' (DATUM NAVD 88 BY GPS OBSERVATIONS UTILIZING THE CALIFORNIA SURVEY & DRAFTING SUPPLY VSN).

FIELD SURVEY DATE: JUNE 18, 2019

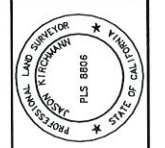
New DI w/ SD pipe

New MH

Approx. limits of retaining wall
- Remove Trees as needed
- Relocate gas & water lines as needed

Install PCC V-ditch

Limits of Resurfacing (Typ.)



JASON KIRCHMANN
PLS 8806



SOUTHERN HEIGHTS BLVD AT COURTRIGHT RD
SAN RAFAEL, CALIFORNIA

TOPOGRAPHIC MAP

Revisions	No.	Date	By	Check
	1	JUN 2019	AS SHOWN	
			Design: N/A	
			Drawn: DAC	
			Approved: JAK	
			Job No: 2019002-56	

Drawing Number: 1 OF 1