

Introduction to the  
**JUSTICE, EQUITY, DIVERSITY, INCLUSION**  
**[JEDI] ELEMENT**

Steering Committee Discussion

September 11, 2019



# What is Environmental Justice?

“The fair treatment of people of all races, cultures, and incomes with respect to the development, adoption, implementation and enforcement of environmental laws, regulations, and policies”

- *Senate Bill 115*

# SB 1000 Context

Cities/Counties must integrate EJ into their general plans by:

- Identifying environmental hazards
- Mitigating health impacts in disadvantaged communities
- Creating meaningful community engagement practices for land use decisions

## SB 1000 Statute – Government Code 65302

- (h)(1) An environmental justice element, or related goals, policies, and objectives integrated in other elements, that **identifies disadvantaged communities** within the area covered by the general plan of the city, county, or city and county, if the city, county, or city and county has a disadvantaged community.

# Statutory Requirements

The environmental justice element, or related environmental justice goals, policies, and objectives integrated in other elements, shall do all of the following:

(A) Identify objectives and policies to reduce the unique or compounded health risks in disadvantaged communities by means that include, but are not limited to

- the reduction of pollution exposure, including the improvement of air quality
- the promotion of public facilities
- food access
- safe and sanitary homes
- physical activity



# Statutory Requirements

The environmental justice element, or related environmental justice goals, policies, and objectives integrated in other elements, shall do all of the following:

- (B) Identify objectives and policies to promote civil engagement in the public decision making process
- (C) Identify objectives and policies that prioritize improvements and programs that address the needs of disadvantaged communities.



# Statutory Requirements

(2) A city, county, or city and county subject to this subdivision shall adopt or review the environmental justice element, or the environmental justice goals, policies, and objectives in other elements, **upon the adoption or next revision of two or more elements concurrently on or after January 1, 2018.**

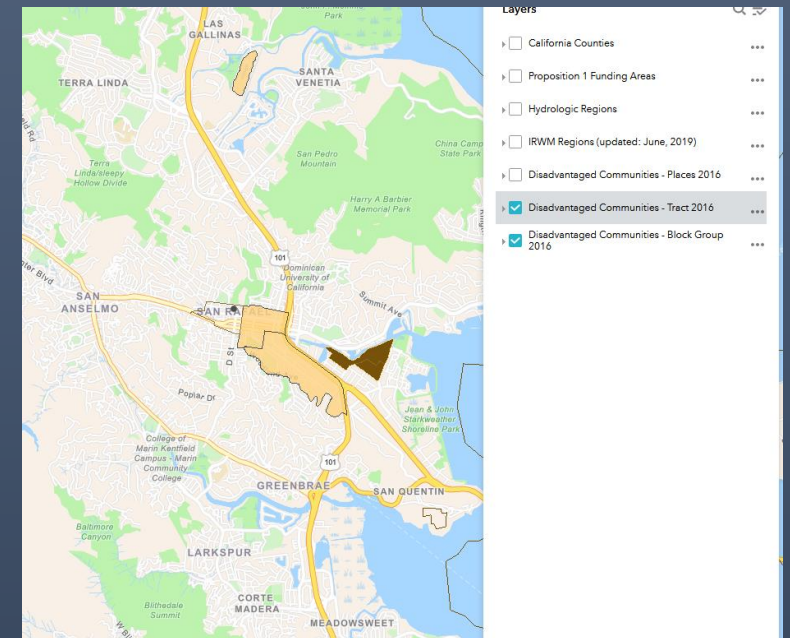
(3) By adding this subdivision, the Legislature does not intend to require a city, county, or city and county to take any action prohibited by the United States Constitution or the California Constitution.



# Statutory Requirements

## Definitions

(4) For purposes of this subdivision, the following terms shall apply (A) “Disadvantaged communities” means an area identified by the California Environmental Protection Agency pursuant to Section 39711 of the Health and Safety Code or an area that is a low-income area that is disproportionately affected by environmental pollution and other hazards that can lead to negative health effects, exposure, or environmental degradation.



Disadvantaged Communities  
(Low-income census tracts and block groups)



# Why a Stand-alone Element?

- Demonstrates importance of subject
- Demonstrates compliance with State law
- Locates all relevant policies in one place for ease of access
- Interrelationships between topics may not be apparent
- Housing Element is not being updated yet
- Facilitates future updates
- Opportunity to define best practices

# Why not just Environmental Justice?

- The spirit and intent of SB 1000 goes beyond environmental justice issues
- Prior General Plan made Equity, Diversity, and Inclusion a priority (Governance Element)
- Broader focus acknowledges systemic issues related to access to education, employment, health care, housing, and transportation
- Acknowledges language and other barriers to inclusion
- Promotes cultural diversity—focus on the positive

# Planning through an Equity Lens

## Procedural

Processes are fair and inclusive

## Distributional

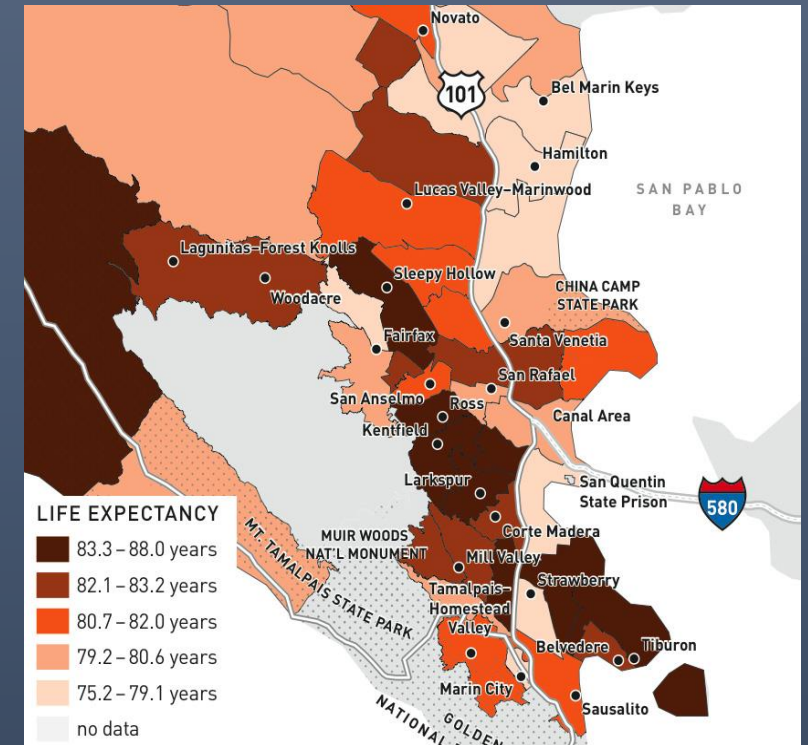
Resources, benefits, and burdens are distributed fairly and prioritized to those most in need

## Structural

Commitment to correct past harms and future unintended consequences

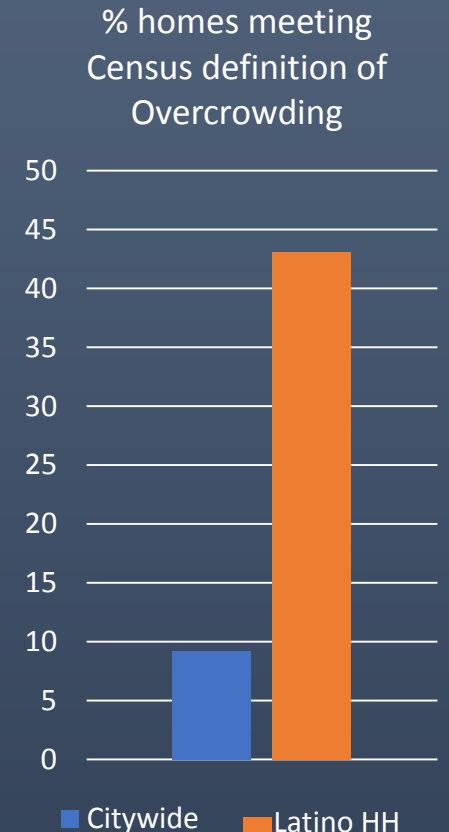
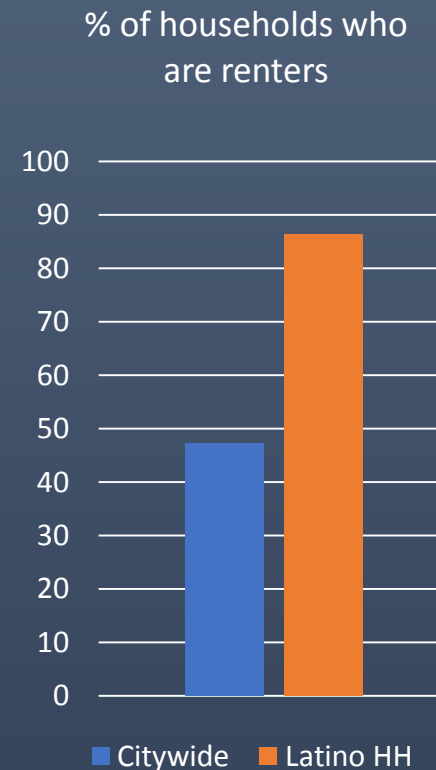
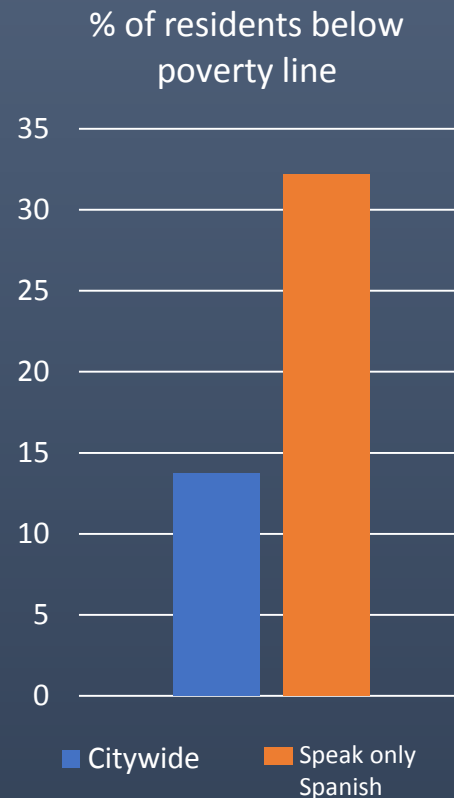
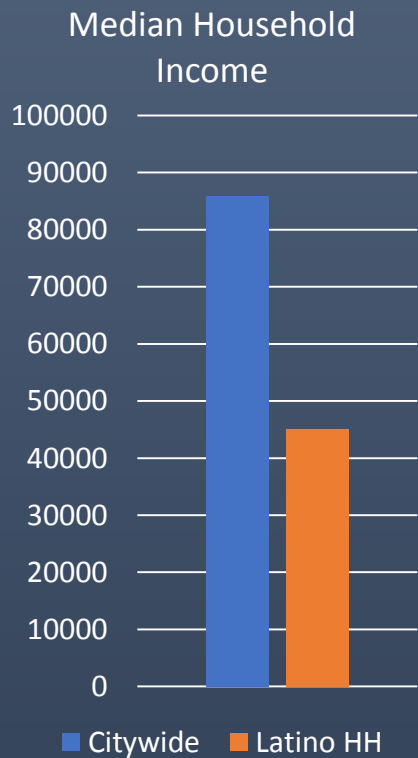
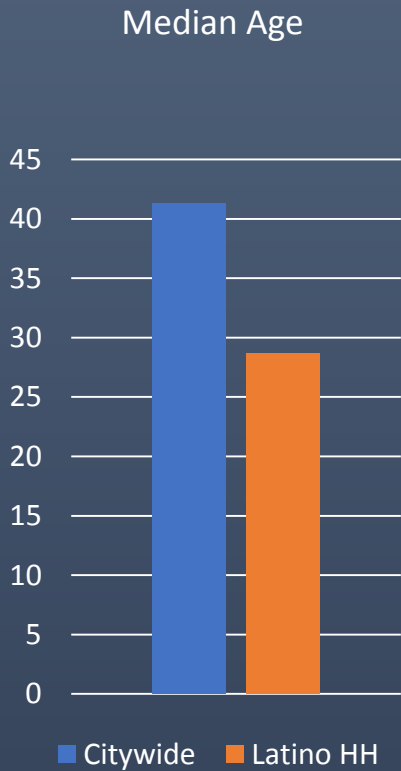
# Data Requirements

- Income and poverty
- Health indicators
  - San Rafael vs other Marin and Bay Area cities
  - Census Tract data for San Rafael
- Access to healthful food/ location of supermarkets, fast food, etc.
- Access to open space, schools, public facilities
- Access to health care and medical services
- Housing condition and overcrowding



# Key Indicators

- 29.7% of San Rafael's population is Hispanic/ Latino



# Community Engagement

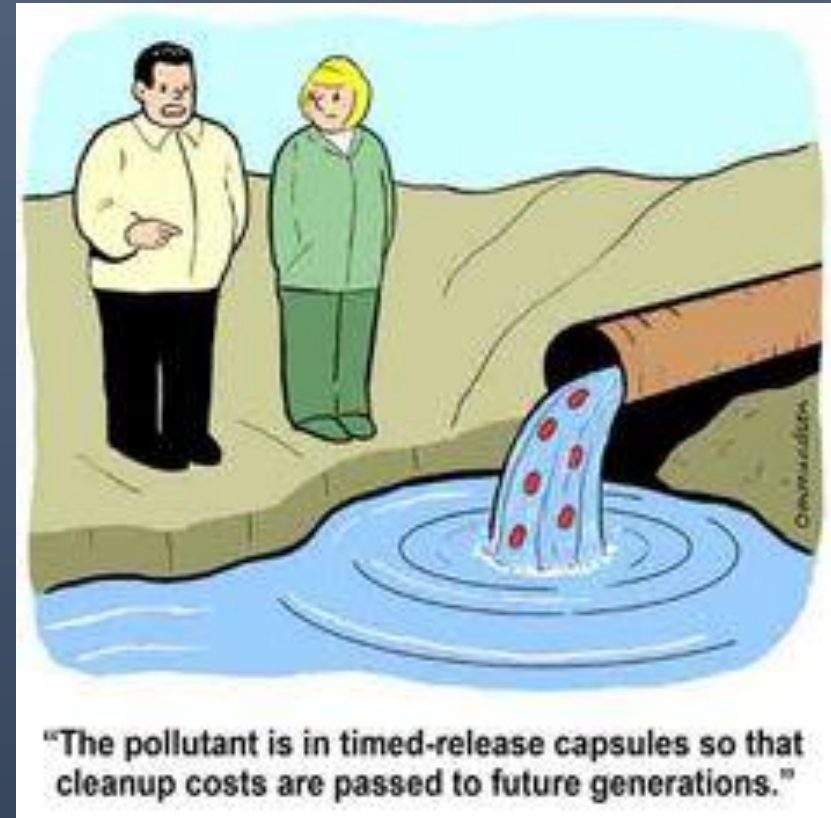
- Engage existing advocates
- Engage individuals in disadvantaged communities
- Multi-lingual
- Culturally appropriate
- Ground truth existing conditions
- Engage businesses and business organizations



# Policy Requirements

General Plan goals, objectives and policies must address, at minimum:

- Reducing pollution exposure
- Improving air quality
- Promoting public facilities
- Promoting food access
- Promoting safe & sanitary homes
- Promoting physical activity
- Promote civic engagement





# Best Practices

- Land use setbacks and buffers
- Good neighbor agreements (Industrial/residential)
- Educating industries and small businesses
- Designation of truck routes
- Health risk assessments for housing near air pollution sources
- Requirements for air filtration
- Tenant protection and anti-displacement policies
- Affordable housing production

# Best Practices

- Access to healthy food
- Access to parks, green space, and recreational facilities
- Opportunity for physical activity and exercise
- Soil and groundwater pollution
- Disaster resilience and recovery
- Neighborhood stabilization and reinvestment
- Police, fire, EMS response time

# JEDI

It's an easy acronym and also pays homage to San Rafael's role in cinematic history. Industrial Light and Magic was headquartered in the city from 1978 to 2005. Five of the nine films in the Star Wars anthology were produced during that time.

*In the Star Wars saga, JEDI refers to an ancient order of protectors united by their commitment to peace and justice. A JEDI practices an ideology of charity, citizenship, and volunteerism, and pursues the improvement of society through knowledge and wisdom. San Rafael's plans should reflect this spirit.*



Introduction to the  
**JUSTICE, EQUITY, DIVERSITY, INCLUSION  
[JEDI] ELEMENT**

Steering Committee Discussion

September 11, 2019



**Discussion**