

USA NORTH 811 90% CONSTRUCTION DOCUMENTS
 Call 811 Before You Dig

Parisi
 TRANSPORTATION CONSULTING
 1750 Bridgeway, Suite B208
 Sausalito, CA 94965
 (415) 649-6000

DRAWN: BA, MG CHECKED: JM, DP
 DESIGNED: BA, MG APPROVED: DP

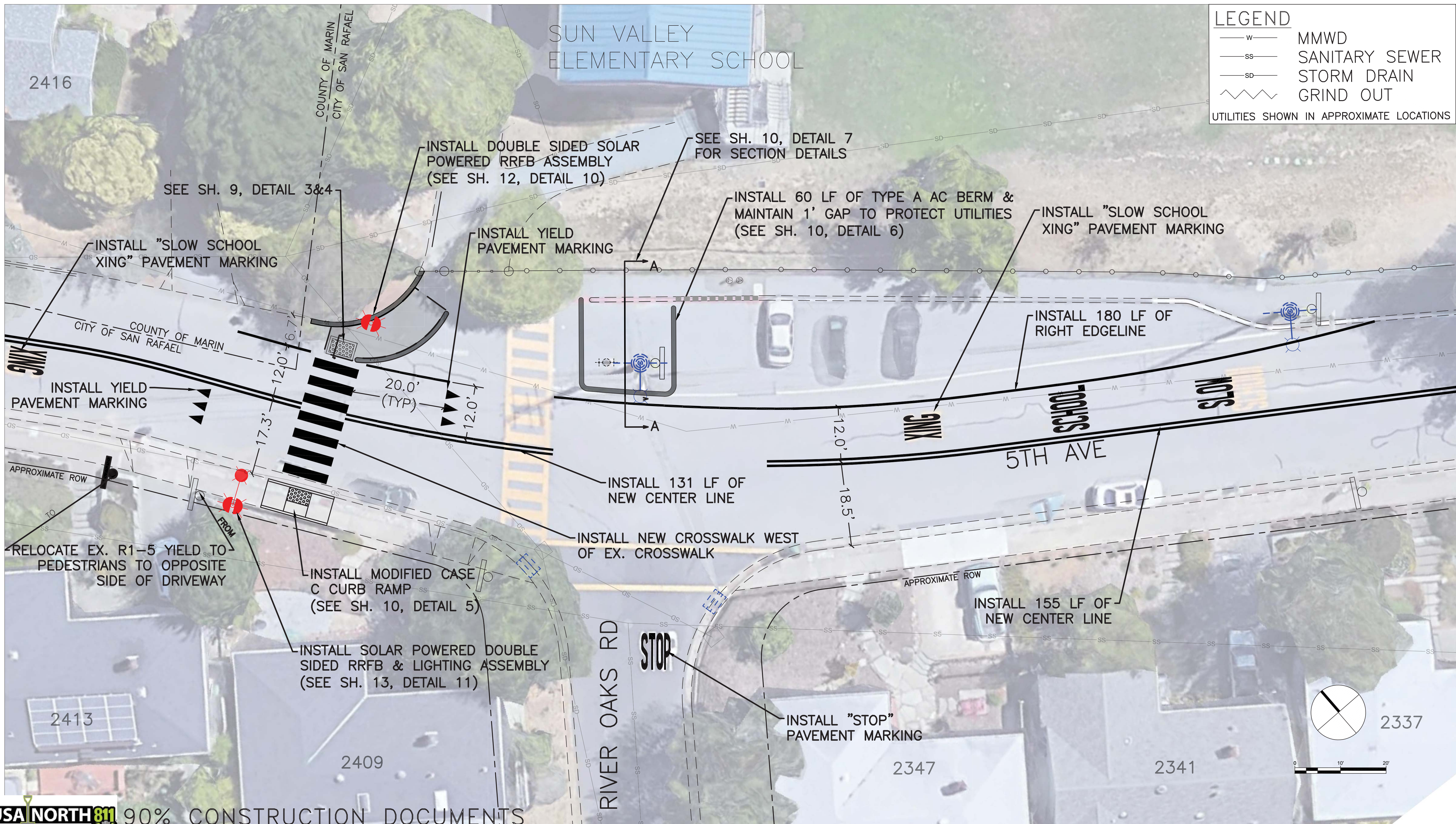


CITY OF SAN RAFAEL
PEDESTRIAN CROSSING IMPROVEMENTS
5TH AVE & RIVER OAKS RD - EXISTING CONDITIONS/DEMO PLAN



REVISIONS	
NO.	DESCRIPTION

DATE: 05/14/2020 SCALE: 1" = 10'
 PTC PROJECT NO.: 19048
 DRAWING: **P-6**
 SHEET NO.: **7 OF 13**



LEGEND	
—W—	MMWD
—SS—	SANITARY SEWER
—SD—	STORM DRAIN
~~~~~	GRIND OUT
UTILITIES SHOWN IN APPROXIMATE LOCATIONS	

**USA NORTH 811** 90% CONSTRUCTION DOCUMENTS  
 Call 811 Before You Dig

**Parisi**  
 TRANSPORTATION CONSULTING

1750 Bridgeway, Suite B208  
 Sausalito, CA 94965  
 (415) 649-6000

DRAWN: BA, MG	CHECKED: JM, DP
DESIGNED: BA, MG	APPROVED: DP



**CITY OF SAN RAFAEL**  
**PEDESTRIAN CROSSING IMPROVEMENTS**  
**5TH AVE & RIVER OAKS RD**



REVISIONS	
NO.	DESCRIPTION

DATE	05/14/2020	SCALE	1" = 10'
PTC PROJECT NO.	19048		
DRAWING	<b>P-7</b>		
SHEET NO.	<b>8</b>		<b>OF 13</b>