



THIRD STREET REHABILITATION BPAC MEETING

August 5, 2020

Second Street **Study Area**



Second Street Planning



Group C WEST END CONNECTIONS

Group C encompasses the West End neighborhood and parts of downtown San Rafael. A total of 21 projects are proposed in Group C, including portions of the **Cross Marin Bikeway+** from the west City limit near San Anselmo to downtown and a **study** of a **north-south bikeway** connecting the Gerstle Park neighborhood with downtown.

GROUP C - HIGHEST PRIORITY PROJECTS

- **D Street/ C Street from Fourth Street to San Rafael Avenue**
 Study the feasibility of a Class IV protected bikeway couplets or a Class III+ bicycle boulevard with wayfinding signage and traffic calming elements on D Street and C Street between Downtown and Gerstle Park.
Score: 92/100 | Group C Rank: 1st | Overall Rank: 3rd
- **Fifth Avenue from River Oaks Road to H Street**
 Study parking occupancy rates and potential for bikeway connecting Sun Valley Elementary and downtown.
Score: 81/100 | Group C Rank: 2nd | Overall Rank: 11th
- **Second Street from Fourth Street to Miramar Avenue**
 Create a Class I multi-use on Second Street between Fourth Street/Marquard Avenue and Miramar Avenue. Build retaining wall on south side of Second Street between Ida Street or G Street to Miramar Avenue to expand existing sidewalk width to accommodate a Class I multi-use path. Alternatively, remove westbound on-street motor vehicle parking on Second Street between Ida Street or G Street to Miramar Avenue, move and re-stripe median, and create a bi-directional Class IV separated bikeway.
Score: 80/100 | Group C Rank: 3rd | Overall Rank: 13th

EXISTING | PROPOSED BIKEWAYS

- Multi-use Path (Class I)
- Bicycle Lane (Class II)
- Bicycle Route (Class III)
- Bicycle Boulevard (Class III+)
- Protected Bikeway (Class IV)
- San Rafael City limits

OTHER PROPOSED PROJECTS

- To Be Determined
- Intersection/Undercrossing

ACTIVITY GENERATORS

- School

Second Street Planning



THIRD STREET REHABILITATION PROJECT

Fourth Street to Grand Avenue

Project Study Report



May 2019
CITY OF SAN RAFAEL
DEPARTMENT OF PUBLIC WORKS

Second Street Options

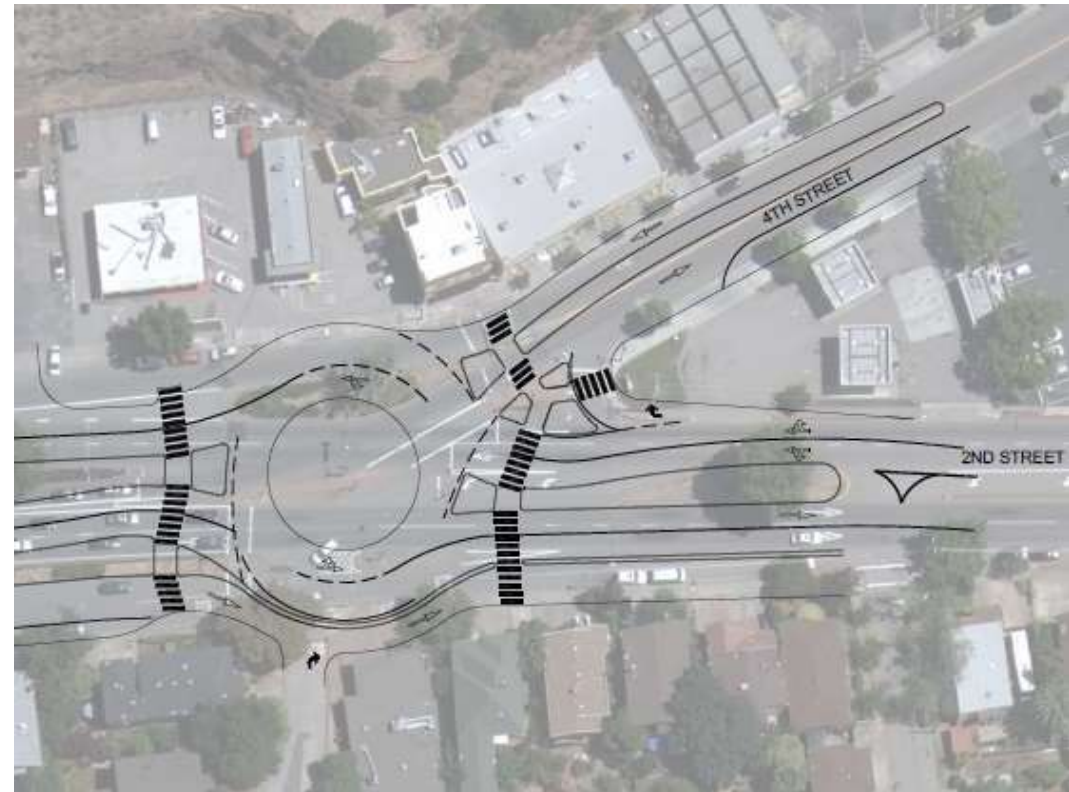


**CLASS 1 MULTI-USE PATHWAY
BIKES + PEDESTRIANS**

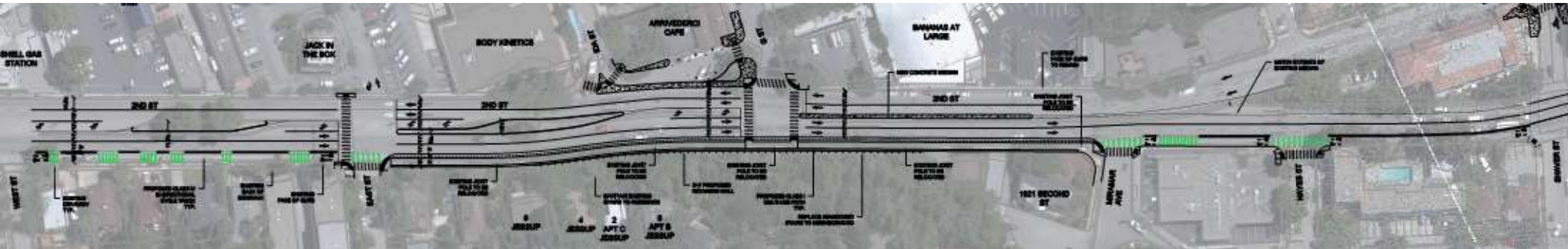


**CLASS IV BIKEWAY
BIKES ONLY**

2nd and 4th **Future Project**



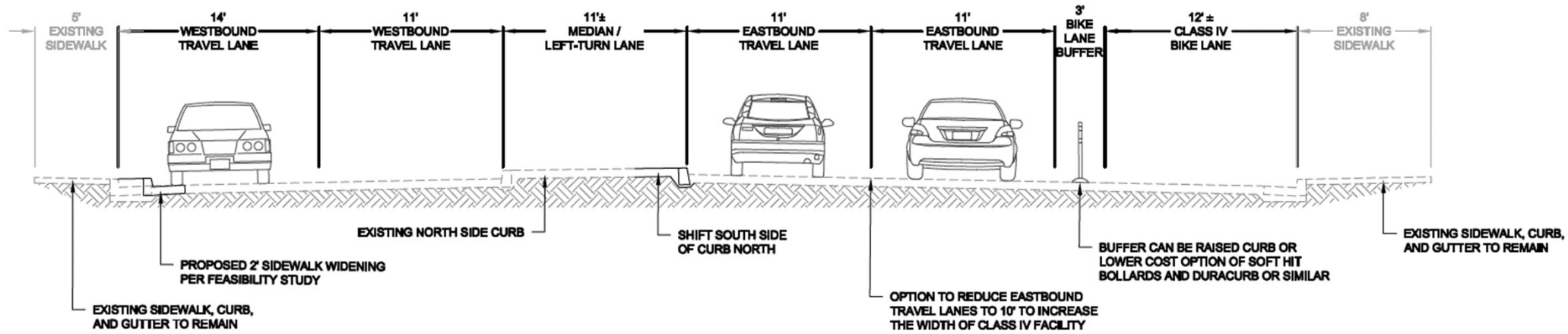
Second Street Bicycle Facility



No On Street Parking

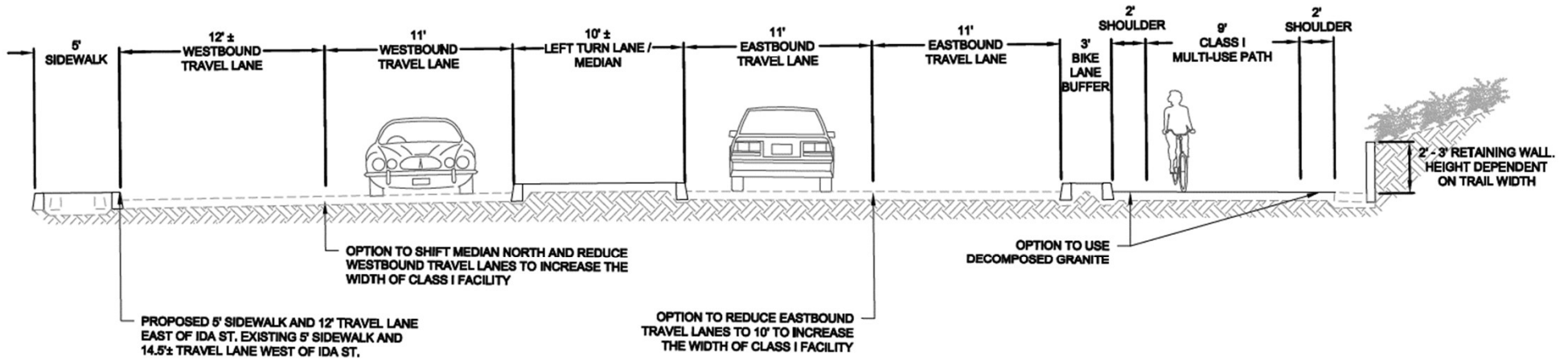
Loss of about 12 on street parking stalls

Second Street Bicycle Facility



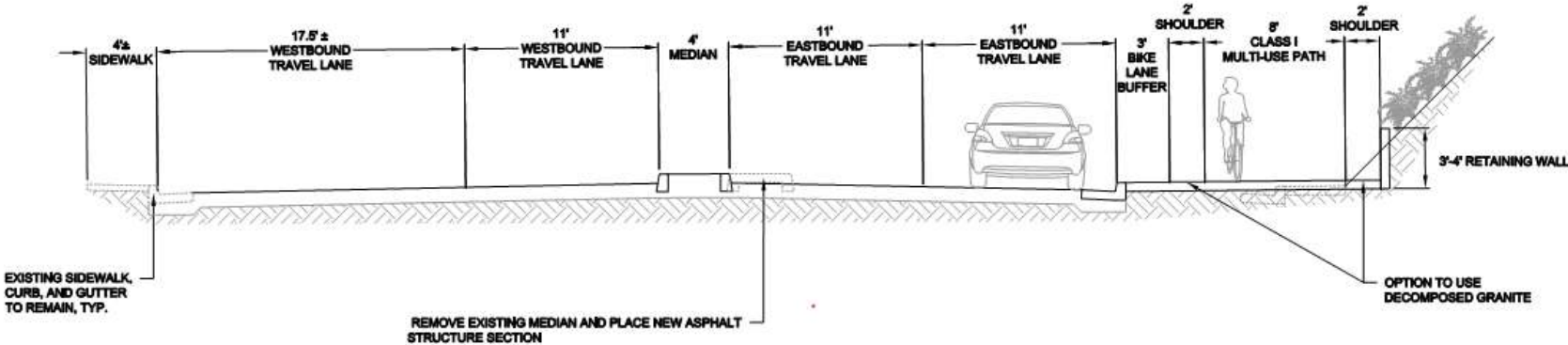
TYPICAL SECTION BETWEEN WEST AND EAST STREET

Second Street Bicycle Facility



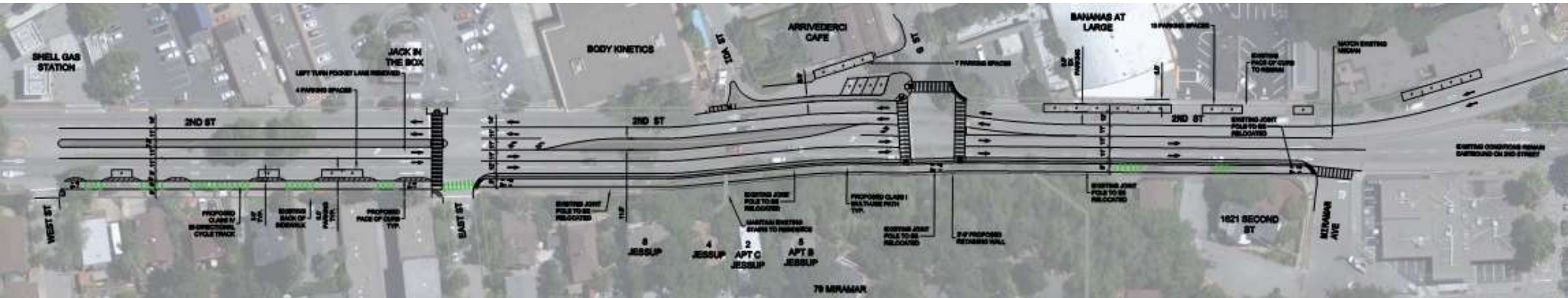
TYPICAL SECTION BETWEEN EAST AND G STREET

Second Street Bicycle Facility



TYPICAL SECTION BETWEEN G ST. AND MIRAMAR AVE

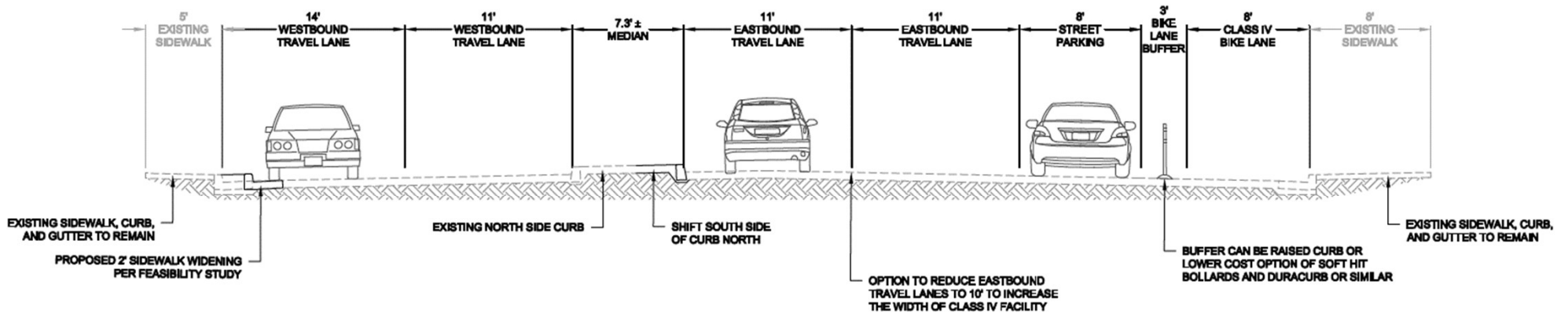
Second Street Bicycle Facility



With Parking

Provides about 4 on street parking stalls

Second Street Bicycle Facility



TYPICAL SECTION BETWEEN WEST AND EAST STREET

Bicycle **Buffer Options**



Bumpers



Bollards