



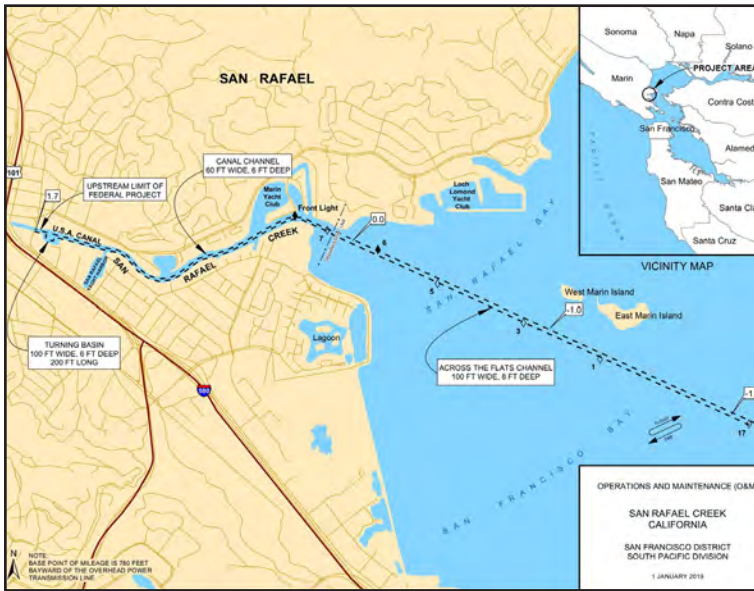
# San Rafael Creek Federal Navigation Channel Factsheet



*A source of significant commercial, public safety and recreational activity, the San Rafael Creek Federal Navigation Channel runs through the heart of Marin County to the San Francisco Bay.*

**1918** Rivers and Harbors Act federal authorization provided for maintenance dredging every 6 to 8 years

**2002** Last full dredging of the San Rafael Federal Navigation Channel



	Federally authorized depth	Current conditions
Inner Channel	6 ft	2.5 ft
Outer Channel	8 ft	4.8 ft



## An Urgent Need.

**Presidentially-Declared Disasters** in winter 2017 and 2019 for severe winter storms, flooding, and mudslides drove significant volumes of sediment from the surrounding hillsides into the Channel, further shoaling the channel and rendering large portions of the Channel non-navigable in low tide.

**\$1,018,000** Engineering and Environmental compliance (*secured in FY 2020 work plan*)

**\$13,000,000** Dredging operations (*still needed*)

# What's at stake for San Rafael

## San Rafael Channel is an urban waterfront.

**12,000** Residents live within 0.5 miles of the Channel

**2,000** Boats moor in the Channel's five harbors, including 135 live aboards



## Critical Public Safety Operations

**3** Police and Fire rescue boats operate daily responding to **1,380** water incidents in the last 15 years



## Firefighting defense

Sediment buildup has eliminated the use of the Channel's turning basin as a water pick up in fighting hillside fires—increasing critical response times by more than 20 minutes.

## A Regional Economic Engine

**134** businesses within 400ft of the Channel grossed **\$191m** in taxable sales in 2019



*"The Channel is a community-wide asset for marine related uses and shall be maintained as a navigable waterway for commercial and other activity."*

- San Rafael General Plan 2040




**66%** of City sales tax revenue comes from Channel-adjacent East San Rafael



**7** Stormwater pump stations line the Channel

## Real Flood Risk and Damage

The seven stations pump stormwater directly into the Channel, protecting the County's most heavily populated FEMA floodzone.

 **28** FEMA repetitive loss properties already exist within the floodzone

The FEMA approved Marin County Local Hazard Mitigation Plan identifies dredging as a high priority project to protect against flood damage. The plan also cites data and research which expects winter storm events to increase in severity and frequency.