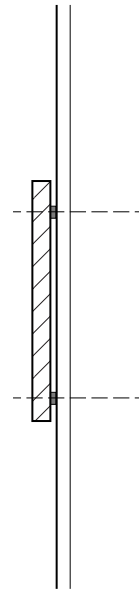


1580

BUILDING ADDRESS NUMBERS:
CUT-OUT ALUMINUM NUMERALS PER
DIGITAL PRODUCTION ART AS PROVIDED
BY DESIGNER.

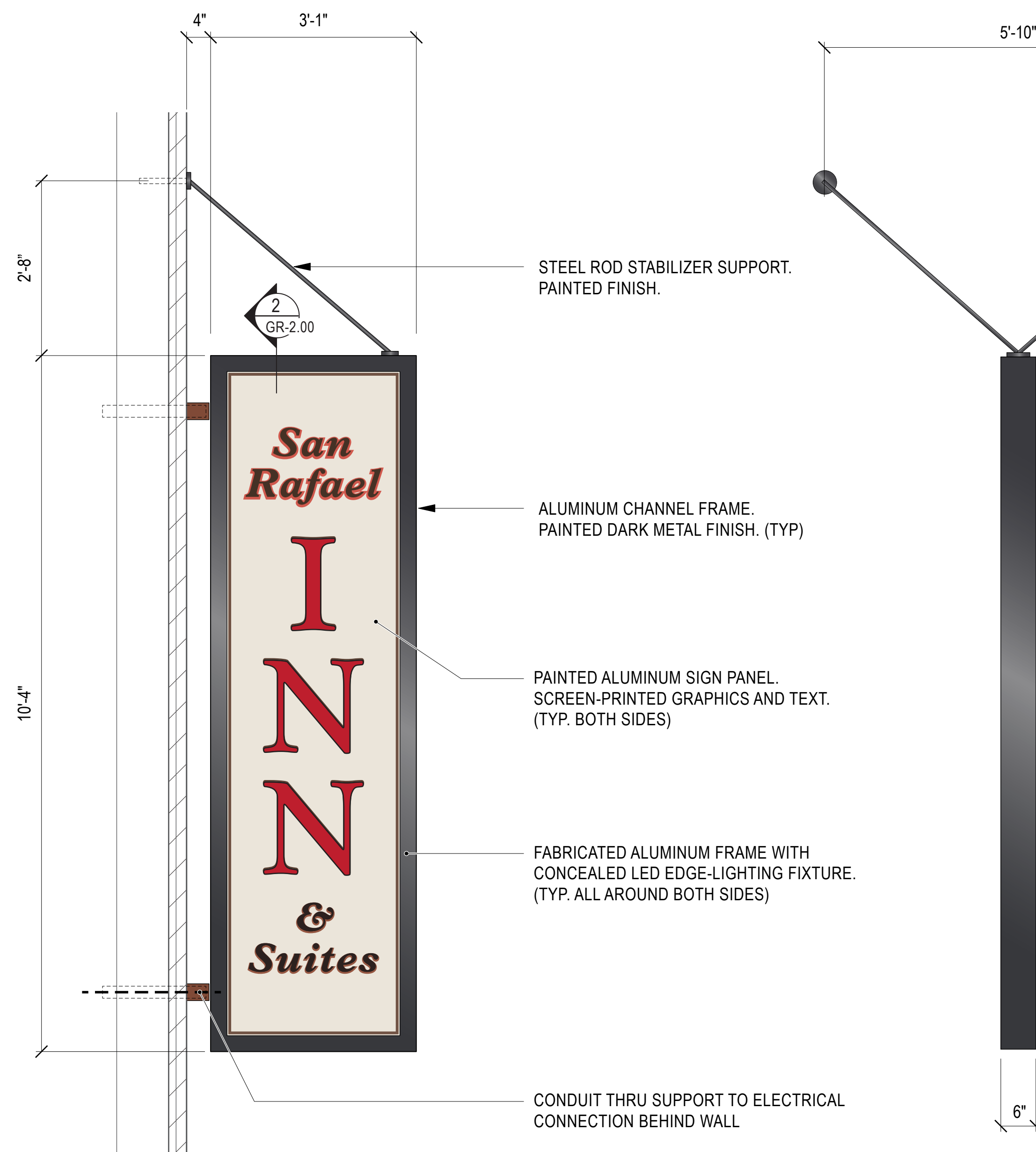
BLACK METAL MATTE FINISH. NON-CORROSIVE
SPACERS, 1/4" THK. ATTACH TO EXISTING BUILDING
SURFACE WITH STAINLESS STEEL ANCHOR BOLTS.



SEALED ALUMINUM HOUSING - ANODIZED FINISH.
HIGH OUTPUT LED ILLUMINATION. CONCEALED BALLAST.
CUSTOMIZED HOUSINGS TO BE SIZED AS NEEDED.

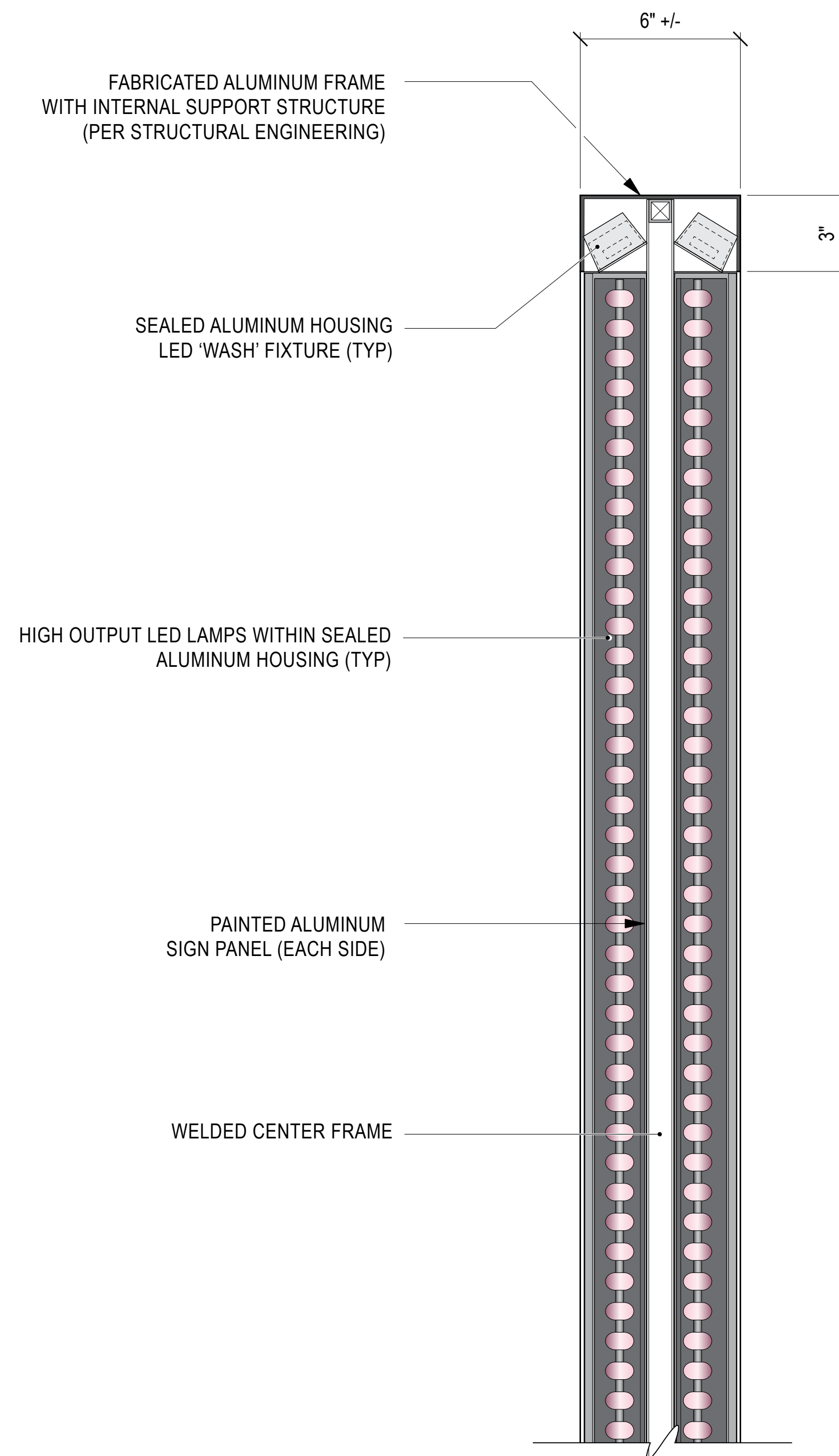
PROJECT LIGHTING DESIGNER SHALL SPECIFY AND SOURCE OPTIMUM
FIXTURE(S) FOR SUITABILITY AND LIGHTING EFFECTIVENESS.

4 BLADE ID SIGN - DETAIL
SCALE: 3/4" = 1'-0"

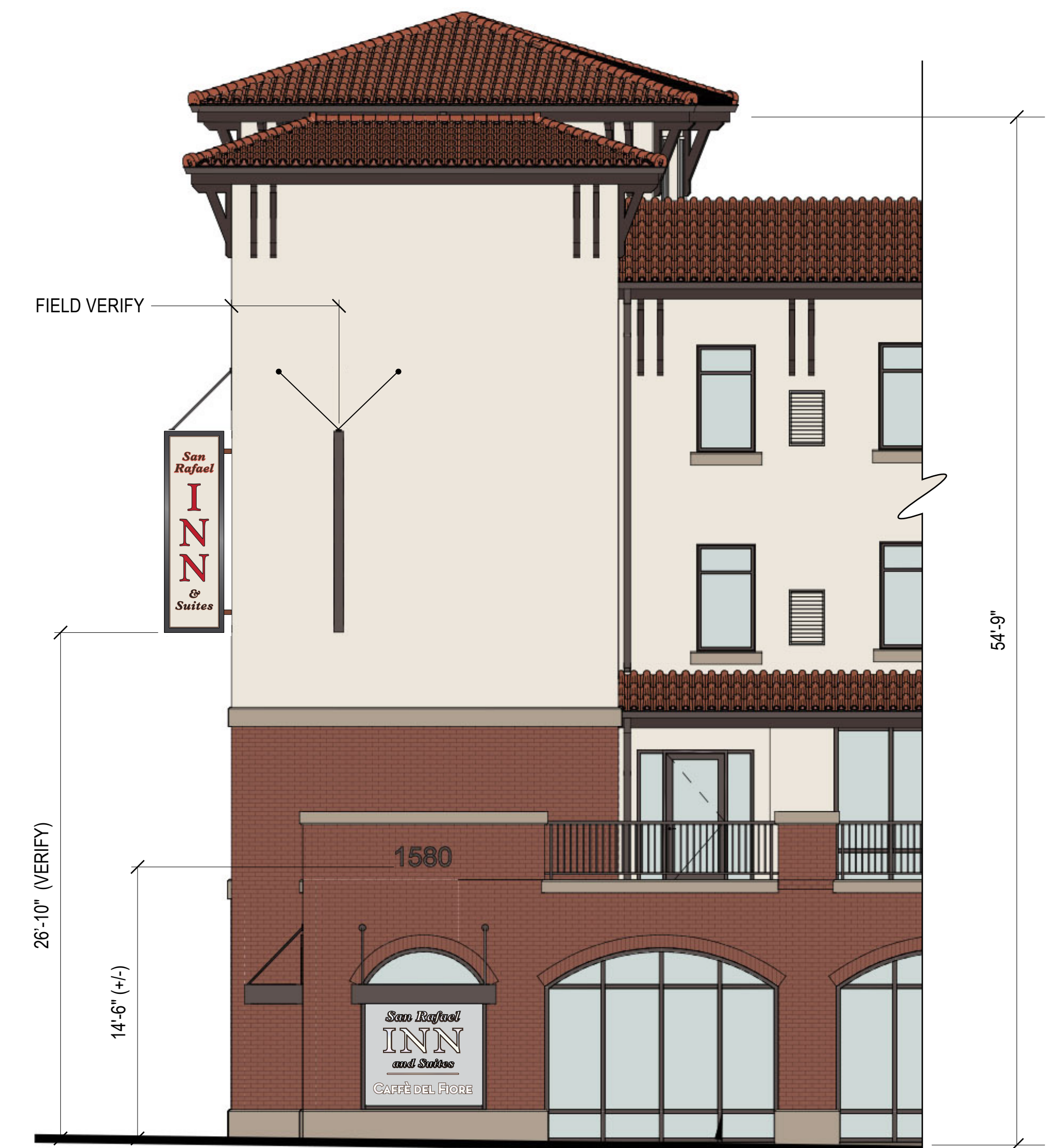


1 BLADE ID SIGN - DETAIL
SCALE: 3/4" = 1'-0"

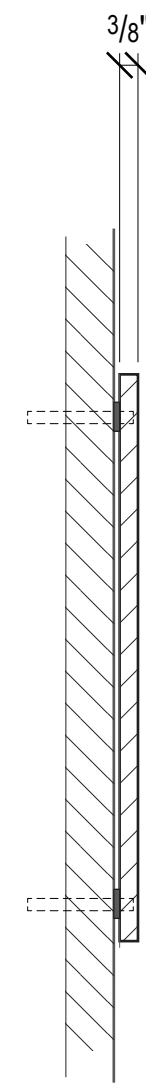
5 EDGE-LIGHTING FIXTURE - REFERENCE ONLY
SCALE: 3/16" = 1'-0"



2 BLADE SIGN - SECTION
SCALE: 3" = 1'-0"

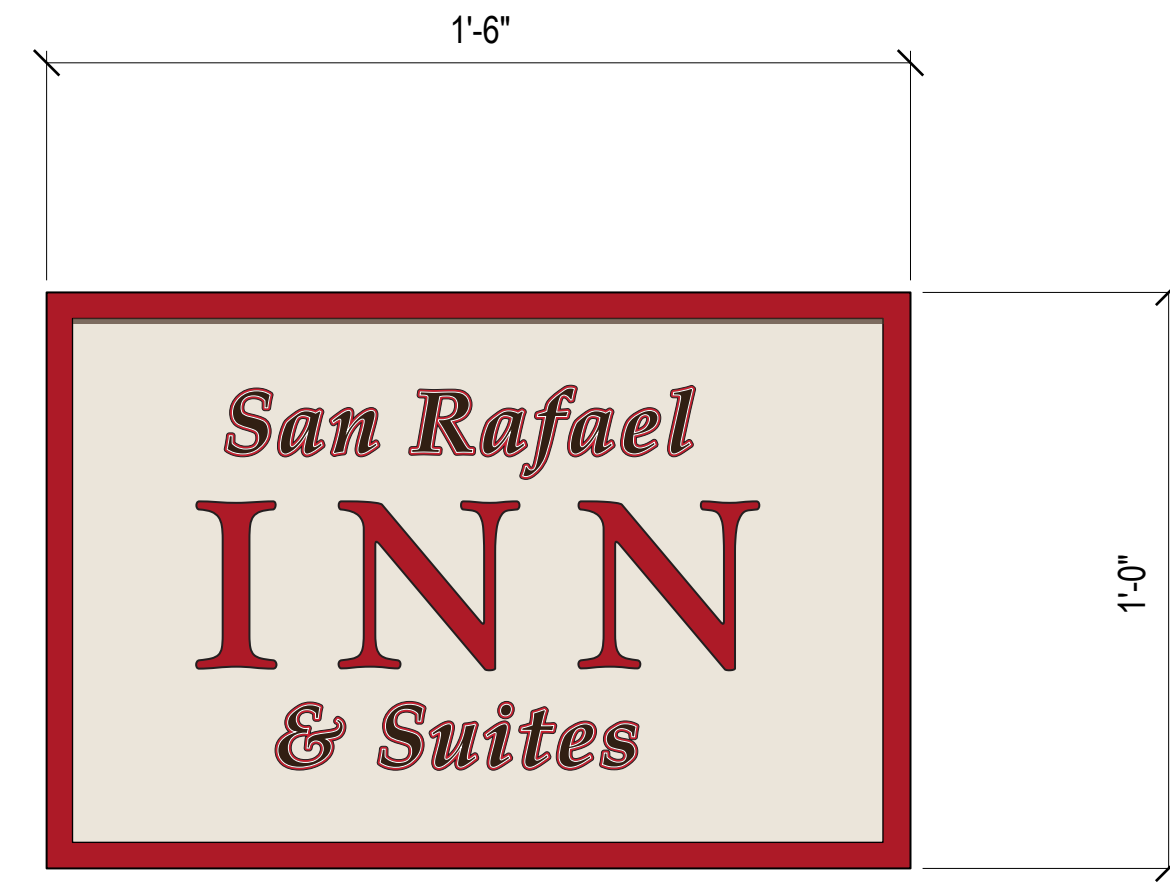


3 WEST ELEVATION - LOCATION DETAIL
SCALE: 3/16" = 1'-0"



CAST ALUMINUM (OR BRASS) PLAQUE.
RAISED BORDER, TEXT AND GRAPHICS.
ALL SURFACES PAINTED.

MOUNT TO EXISTING WALL WITH CONCEALED
STAINLESS STEEL ANCHOR SCREWS.



GRAPHICS AND TEXT SHOWN FOR
INFORMATION ONLY PENDING APPROVAL
BY ARCHITECT/CLIENT.

3 HOTEL ID PLAQUE @ ENTRANCE
SCALE: 3" = 1'-0"



EXTERIOR (FRONT) VIEW

DIGITAL CUT ADHESIVE VINYL LETTERFORMS
APPLIED SECOND SURFACE AT FRONT FRONT
PANE OF DOUBLE-PANED WINDOW

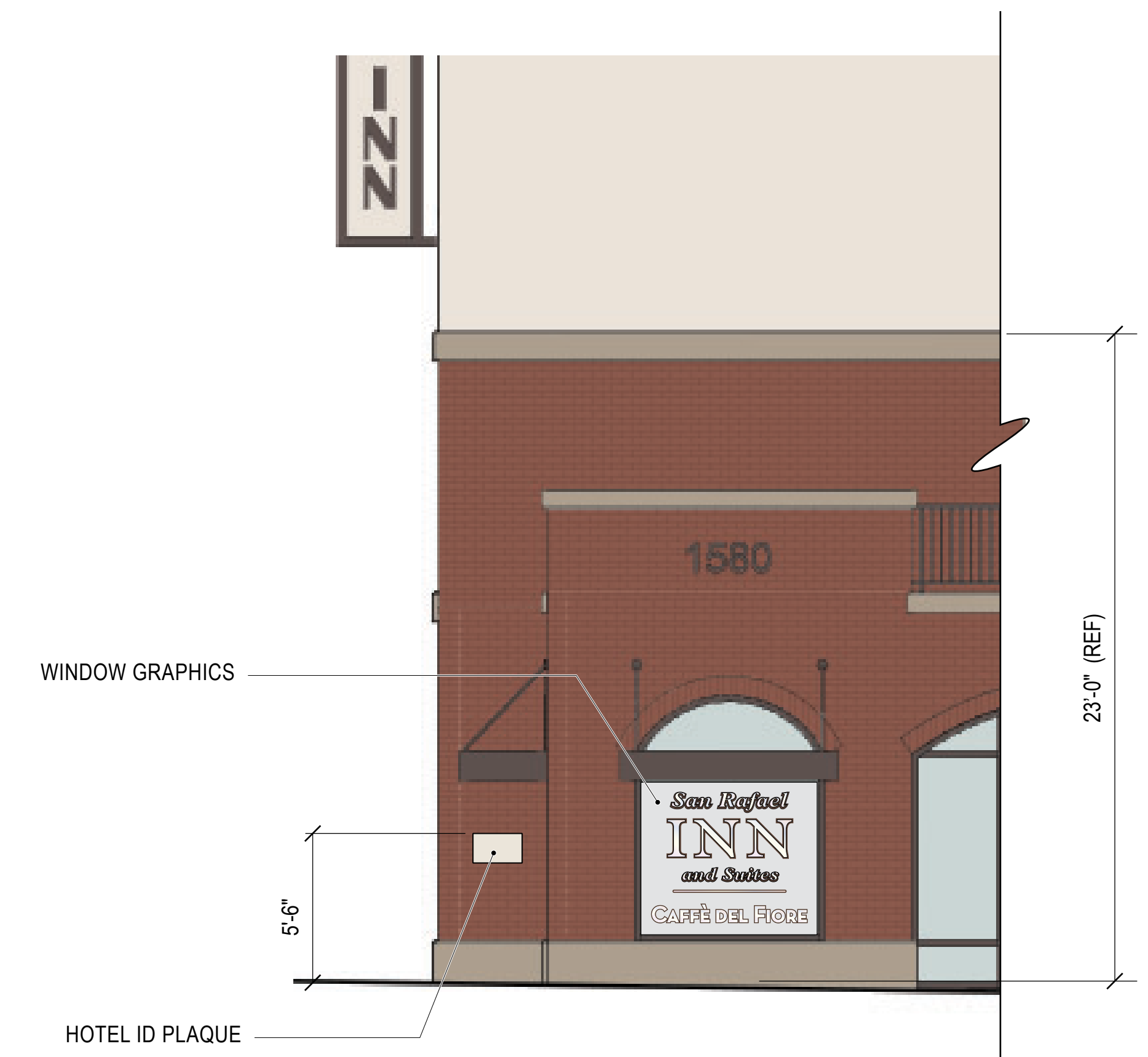
OPAQUE VINYL LETTERFORMS APPLIED TO BACK

SIGNAGE VENDOR TO VERIFY FINAL
PRODUCTION ART FROM DESIGNER



INTERIOR (REAR) VIEW

1 WINDOW GRAPHICS - GROUND FLOOR
SCALE: 1" = 1'-0"



2 WEST ELEVATION - LOCATION DETAIL
SCALE: 1/4" = 1'-0"