



BOARD OF DIRECTORS

William Carney, President
Bob Spofford, Vice President
Greg Brockbank
Linda Jackson
Kay Karchevski
Kiki La Porta
Samantha Mericle
Sue Spofford
Stuart Siegel

415.457.7656

September 20, 2021

San Rafael City Council
14 Fifth Avenue
San Rafael, CA 94901

RE: Climate “Adaptation” Grand Jury Response

Honorable Mayor and Council Members,

We appreciate the City’s thoughtful response to the Grand Jury recommendations (items R1 and R4), and especially the recognition that changing conditions and evolving awareness of climate change may lead to the need for even greater cooperation with County and regional jurisdictions.

Foreshadowing that possibility, we’re attaching our November 16, 2020, letter on the City’s initial response to the Grand Jury, which summarizes key principles for approaching preparedness for climate impacts. Attached to that letter are two previously submitted diagrams developed by the Marin Climate Action Committee (MCAN) to show how Marin’s diversity of climate agencies and organizations (including Drawdown Marin and the Marin Climate & Energy Partnership) might pull together more closely to deal with this growing crisis.

Thanks very much for your consideration.

Sincerely,

William Carney
President

Copies:
Jim Schutz, Cory Bytof



November 16, 2020

BOARD OF DIRECTORS

William Carney, President
Bob Spofford, Vice President
Greg Brockbank
Jim Geraghty
Linda Jackson
Kay Karchevski
Kiki La Porta
Samantha Mericle
Sue Spofford
Stuart Siegel

415.457.7656

San Rafael City Council
1400 Fifth Avenue
San Rafael, CA 94901

RE: Marin Grand Jury Report on Climate Change

Honorable Mayor and Council Members,

Sustainable San Rafael supports the City's further analysis of the Marin Grand Jury's recommended countywide task force on climate resilience (R1) and strengthening of Marin Climate and Energy Partnership (R4). We trust this analysis will lead to greater collaboration and effectiveness of climate actions throughout Marin. We also appreciate the thoughtful consideration given in the staff report to the recommendations of the Marin Climate Action Network.

We especially appreciate the emphasis placed on these key points:

1. Continuing to reduce greenhouse gas emissions is critical to reducing climate impacts, that is, "climate mitigation" is an essential part of "climate adaptation." Without solving the root causes of climate change, our levees will never be high enough, our reservoirs deep enough, or our homes "hardened" enough to resist the intensifying floods, drought, wildfires and other climate disasters we are now only beginning to experience.

2. Drawdown Marin offers a comprehensive countywide framework for reaching net zero GHG emissions in the limited time we have left before irreversible climate change sets in. The Strategic Plan for this new initiative, at the Board of Supervisors next month, provides a 25-year roadmap of practical goals and solutions, along with an inclusive governing body of public and community partners.

3. We have effective models, both organizationally and fiscally, for confronting the climate crisis, if we work together, pooling expertise and resources. Recent measures funding the Bay Restoration Authority and Marin Wildfire Prevention Authority lend credence to ideas like the "countywide . . . joint powers authority to oversee adaptation planning" suggested in San Rafael's draft General Plan 2040 or the comprehensive Marin Climate Mobilization Decade included among Drawdown Marin's proposals. Again, any such measure needs to include funds for both greenhouse gas reduction ("mitigation") and resilience ("adaptation").

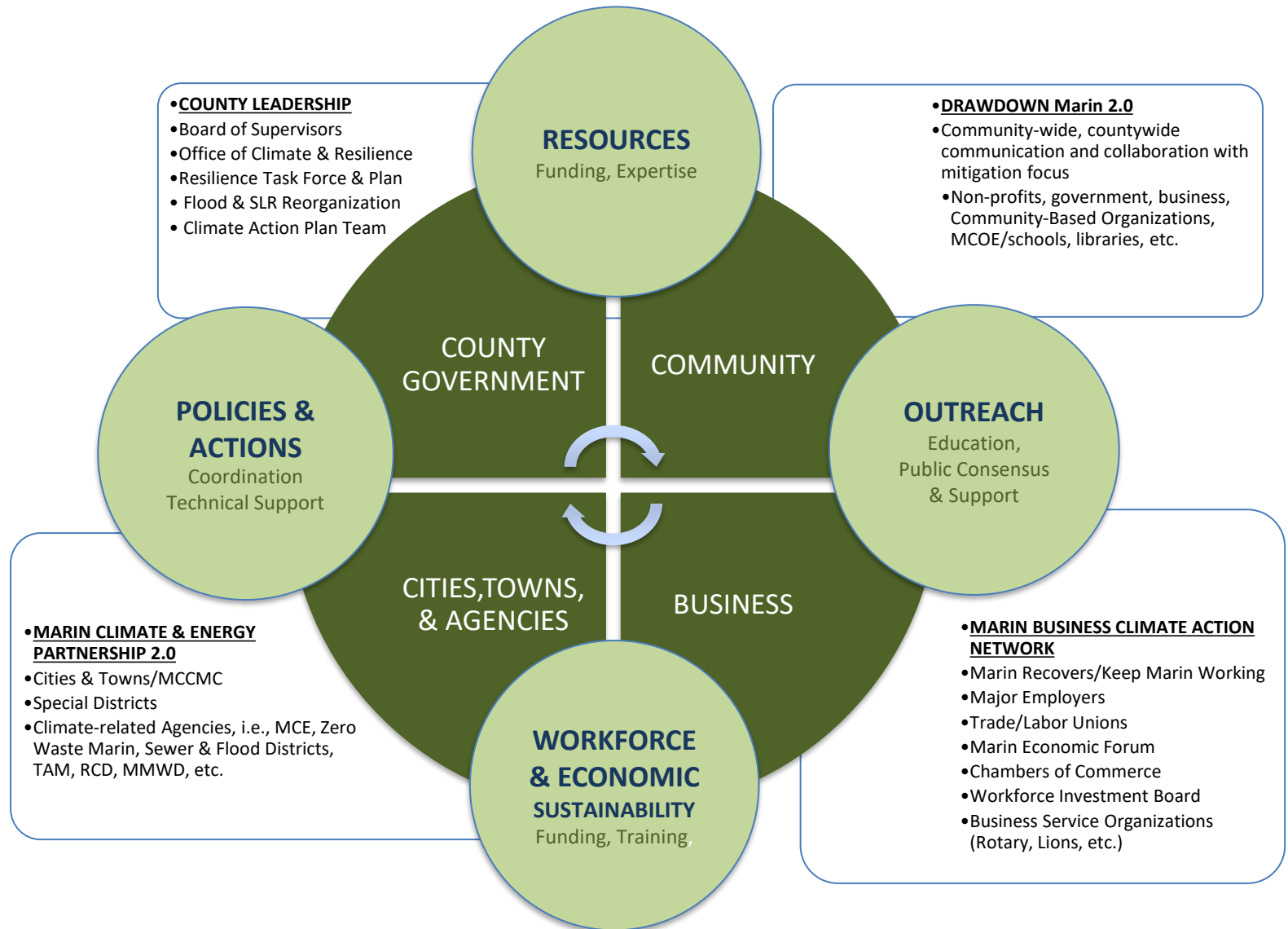
Thank you for confirming the City's commitment to effective, collaborative and comprehensive climate action.

Sincerely,

William Carney
Board President

Attachment:
MCAN Marin Climate Action Ecosystem diagrams

Marin Climate Action Ecosystem



Re-Imagining Marin's Climate Action Ecosystem:

Summary of Key Recommended Responses to Grand Jury

MARIN COUNTY OFFICE OF CLIMATE & RESILIENCE (new)

CONSOLIDATE a multi-departmental & multi-disciplinary team within the County Administrator's Office, bringing together staff expertise to collaborate, integrate, and implement climate adaptation and mitigation efforts.

Climate & Resilience Officer. Staff from Community Development, Public Works, Health & Human Services, Parks & Open Space, etc.

- **Countywide Resilience Task Force and Plan**
- **Flood & SLR Feasibility Study & Reorganization**
- **Climate Action Plan & Sustainability Programs**
- **Open Space Restoration & Carbon Sequestration**
- **Land Use Planning**
- **Preparedness for Climate Impacts on Health**

MARIN CLIMATE & ENERGY PARTNERSHIP 2.0

STRENGTHEN membership, funding, and focus of this multi-jurisdictional partnership that coordinates and supports staff to analyze and implement Climate Action Plans, climate policies, and climate programs across all jurisdictions.

MCEP Executive Officer. Staff from member agencies (and others that may be added): cities, towns, special districts, climate-related agencies including MCE, TAM, MMWD, Zero Waste Marin. Continue and increase funding commitment from members, augmented by grants and other sources.

DRAWDOWN Marin 2.0

COLLABORATE countywide by finalizing formation of this non-profit public/private partnership to provide leadership and support solutions to achieve net zero greenhouse gas emissions and a thriving community, grounding government and community initiatives throughout Marin within a comprehensive framework for addressing climate change.

Executive Director. Broad-based non-profit Board composed of community, business, agency, and elected leaders.

MARIN BUSINESS CLIMATE ACTION NETWORK (new)

ENGAGE full range and resources of the business community in climate solutions through a collaborative of companies and related organizations. Create and execute economic recovery and ongoing development strategy with clean energy, electrification of transportation and buildings, and low carbon solutions. Drive workforce development with clean economy job creation and capacity building.

Group meets regularly with a rotating chair, collaborates, co-promotes, supports innovation and investment, advises policy makers on clean economy initiatives. Reports out impact metrics, sustainable business activities, programs and accomplishments.