



DESIGN DESCRIPTION

THE PROPOSED DESIGN IS A 103-SUITE ASSISTED LIVING AND MEMORY CARE COMMUNITY TO BE DEVELOPED, OWNED AND OPERATED BY AEGIS LIVING. IT WILL PROVIDE ASSISTED LIVING (54 RESIDENT SUITES) AND MEMORY CARE (49 RESIDENT SUITES) SERVICES LICENSED BY THE STATE AS A RESIDENTIAL CARE FACILITY FOR THE ELDERLY. IT WILL EMPLOY APPROXIMATELY 100 PEOPLE OVER THREE SHIFTS, WITH THE MAXIMUM SHIFT HAVING APPROXIMATELY 35 STAFF. THE BUILDING WILL BE A FIVE-STORY STRUCTURE WITH PARKING IN A SUBTERRANEAN GARAGE TO BE LOCATED AT THE CORNER OF MISSION AND LINCOLN AVENUES AND IS WITHIN WALKING DISTANCE TO DOWNTOWN, THE RETAIL DISTRICT, THE TRANSIT CENTER AND THE SMART RAIL STATION.

THE LAYOUT OF THE BUILDING TAKES ADVANTAGE OF THE NATURAL SLOPE ACROSS THE SITE, GIVING STREET LEVEL ACCESS TO THE PUBLIC ENTRANCES AND COMMONS AMENITY SPACES PROVIDED FOR THE RESIDENTS: COMMONS SPACES ON THE GROUND LEVEL INCLUDE AMENITIES SUCH AS DINING VENUES, TERRACE, WELLNESS/FITNESS SUITE, AND CINEMA/AUDITORIUM. ADDITIONAL RESIDENT LOUNGES ARE LOCATED ON THE UPPER FLOORS OF THE BUILDING IN ADDITION TO A FIFTH FLOOR TERRACE.

THE BUILDING WILL HAVE A COMMERCIAL-GRADE KITCHEN THAT PROVIDES ALL RESIDENT MEALS IN THE DINING VENUES ON THE GROUND LEVEL. THE INDIVIDUAL RESIDENT SUITES HAVE A SMALL WET BAR AREA (CASEWORK, A BAR SINK AND A SMALL REFRIGERATOR), BUT THESE ARE NOT INTENDED FOR THE PRODUCTION OF MEALS.

THERE ARE TWO ENTRANCES AT THE STREET LEVEL: ONE PRIMARY PEDESTRIAN ENTRANCE FROM MISSION AND A COVERED VEHICULAR DROP OFF LINCOLN. THE STREET LEVEL ALSO PROVIDES MISSION AVENUE ACCESS TO THE PARKING GARAGE CONTAINING 37 SPACES TOTAL (INCLUDING 2 ADA SPACES) AS WELL AS A TURNOUT LANE FOR FIRE ACCESS ON MISSION AVENUE AND ANOTHER ON LINCOLN AVE FOR LOADING. THIS CONFIGURATION HAS BEEN PREVIOUSLY REVIEWED AND APPROVED AS PART OF THE ORIGINAL BUILDING PERMIT APPROVALS.

MEMORY CARE WILL BE LOCATED ON LEVELS 2 AND 3 OF THE BUILDING AND CONTAINS THE NEEDED INFRASTRUCTURE TO PROVIDE A SAFE, COMFORTABLE AND CARING ENVIRONMENT FOR THE RESIDENTS. THE EXISTING SLOPE ON THE SITE ALLOWS FOR THE ENTIRE NORTH FACE FAÇADE OF THE MEMORY CARE COMMONS SPACES TO OPEN ONTO A PRIVATE AND SECURED OUTDOOR TERRACE DEDICATED TO THE MEMORY CARE RESIDENTS (AND SPECIFICALLY DESIGNED TO ACCOMMODATE THEIR NEEDS). COMMON SPACES DEDICATED TO MEMORY CARE INCLUDE DINING ROOM, ACTIVITY ROOM/MUSIC ROOM, BATH/TIQUE SPA, LOUNGES, AND A SERIES OF MEMORY-SKILL STATIONS.

THE FOURTH AND FIFTH RESIDENTIAL FLOORS (UPPER TWO) WILL BE DESIGNATED FOR ASSISTED LIVING, TOTALING 49 SUITES. THESE WILL HAVE EXTERIOR BALCONY ACCESS FROM DESIGNATED SUITES ON THE MISSION AND LINCOLN AVENUE SIDES. THERE WILL ALSO BE ACCESS TO THE CORNER TOWER ROOF DECK FROM THE ELEVATOR LOBBY ADJACENT THE MAIN TOWER FEATURE.

IN ADDITION TO PROVIDING EXCELLENT DIRECT CARE FOR THEIR RESIDENTS, AEGIS TAKES EXTRAORDINARY CARE TO CREATE COHESIVE DESIGNS THAT RESONATE WITH THE COMMUNITIES WITHIN WHICH THEY RESIDE, WHILE PROVIDING AN IMMERSIVE EXPERIENCE FOR THE OCCUPANTS OF THE BUILDING. THIS WORKS NOT ONLY TO CREATE A SENSE OF PLACE FOR THE RESIDENTS, BUT ALSO RESULTS IN EASILY IDENTIFIABLE BUILDINGS THAT ARE ANCHORS OR ICONS WITHIN THE COMMUNITY. AS EACH OF THEIR PROPERTIES ARE UNIQUE, DESIGN ALWAYS BEGINS WITH AN UNDERSTANDING OF THE HISTORY OF A PLACE.

THE SAN RAFAEL PROJECT EMPLOYS A CALIFORNIA MISSION REVIVAL ARCHITECTURAL STYLE FOUND IN THE NEARBY MISSION SAN RAFAEL. THIS BEGINS WITH SIMPLE MASSING, DEEP OPENINGS, OFFSETS AND SETBACKS TO BREAK DOWN THE SCALE. ENTRIES, THE ARCADES, THE BLUE TILED BUTTRESSED 'BELL' TOWER, THE ARCHED COVERED DROP OFF (MAIN VEHICULAR ENTRY) ARE ARTICULATED WITH CORNICES, ACCENTS AND SIMPLE FORM CHANGES. THE ROOF OVERHANGS, WITH WOODEN BEAMS AND EAVES, ARE TOPPED WITH CONTRASTING CLAY TILE ROOFS.

THE DESIGN WAS REFINED FOR THIS SUBMITTAL TO REDUCE THE SENSE OF SCALE OF THE BUILDING, AS WELL AS CREATE A BETTER "HANDSHAKE" BETWEEN THE NEIGHBORING PROPERTIES. IN ESSENCE, THE PREVIOUS DESIGN PRESENTED IN MAY INSERTED A FLOOR BETWEEN LEVELS 2 AND 3 INTO THE HIGHLY REGARDED 2018 APPROVED DESIGN. WHILE THE APPROACH RETAINED MANY OF THE CHARACTERISTICS OF THE 2018 BUILDING, THE DRB FELT THE OVERALL RESULTING SCALE LOST THE GRANULARITY OF THE ORIGINAL SUBMITTAL AND, WITH IT, THE ESSENCE OF THE ORIGINAL DESIGN.

THIS SUBMITTAL REPRESENTS A FUNDAMENTAL CHANGE IN THE DESIGN APPROACH. INSTEAD OF INSERTING A FLOOR BETWEEN 2 AND 3, THE APPROACH WAS TO DELICATELY ADD SPACE TO THE TOP OF THE BUILDING. THE BUILDING NOW LARGELY READS LIKE THE ORIGINAL PROPOSAL, BUT THE ADDITIONAL RENTABLE SPACE NECESSARY TO MAKE THE PROJECT A REALITY IS CAREFULLY FIT ONTO THE TOP FLOOR. THE DRB LAMENTED THE LOSS OF THE ROOFTOP AREA, WHICH WAS IMPROVED IN THIS VERSION BY ADDING A WALK OUT ROOF TERRACE AT THE CORNER OF THE FIFTH LEVEL. THIS WILL BE MUCH MORE WELCOMING FOR RESIDENTS AND COALESCE AROUND THE TOWER ELEMENT. FURTHER, BY ERODING THE UNITS FROM AROUND THE TOWER AND REPLACING THEM WITH ROOF TERRACE, IT ALLOWS THE TOWER TO REGAIN ITS VISUAL PROMINENCE FROM THE GROUND LEVEL.

THE WALL PLANES ALONG MISSION AND LINCOLN WERE CAREFULLY REVIEWED, AND THE TOP FLOOR WAS DE-EMPHASIZED BY A SOFT CHANGE OF COLOR AND ADDED DETAIL TO THE AWNING AND BALCONY RAIL. THE GABLED ROOF AT THE WEST END OF THE BUILDING WAS BROUGHT BACK TO THE FOURTH LEVEL, AND THE CORNER UNITS WERE FITTED WITH BALCONIES ON THE CORNERS TO FURTHER REDUCE THE SENSE OF SCALE. THE EYE NOW NATURALLY RESTS ON THE TOP OF LEVEL FOUR RATHER THAN TAKING IN THE ENTIRE FIVE LEVELS AS THE PREVIOUS SUBMITTAL. FURTHER, THE VIEWS TO THE BUILDING FROM THE NORTH AND WEST WERE REDESIGNED TO DE-EMPHASIZE THE SENSE OF SCALE, AND TO CREATE SIMILAR PROPORTIONS TO THE ADJACENT BUILDINGS. USEABLE UNIT SPACE WAS REPLACED WITH BALCONY SPACE TO ELIMINATE THE WALLS AT THE TOP FLOOR CORNERS. THIS RESULTS IN EFFECTIVE CHANGES IN SCALE TO BOTH HORIZONTAL AND VERTICAL PLANES. WE LOOK FORWARD TO DISCUSSING IN FURTHER DETAIL THE REVISED AEGIS SAN RAFAEL SUBMITTAL AT THE CONTINUANCE MEETING OF THE DRB.

PROJECT INFORMATION

GENERAL
 ZONING: HR-1 MULTIFAMILY RESIDENTIAL (HIGH DENSITY) 1,000 SF LAND PER DWELLING UNIT
 MAX. BUILDING HEIGHT: 48'
 PROPOSED BUILDING HEIGHT: 47'
 MIN. USABLE OUTDOOR AREA: 100 SF
 PROPOSED USABLE OUTDOOR AREA: 3,970 SF
 AP NUMBERS: 11-184-09, -08

SETBACKS

THE SETBACKS OF THE ORIGINAL APPROVED DESIGN ARE MAINTAINED TO INCLUDE 5' SETBACKS ON THE REAR AND SIDES OF THE FOOTPRINT, AS WELL AS A 10' SETBACK FROM MISSION AND A 15' SETBACK FROM LINCOLN. PROPOSED BUILDING FAÇADES & ARTICULATIONS EMULATE APPROVED DESIGN.

SHEET INDEX

| SHEET NUMBER | SHEET NAME |
|--------------|--|
| 1 | TITLE SHEET |
| 2.1 | LOWER GARAGE PLAN |
| 3 | MAIN LEVEL FLOOR PLAN |
| 4.1 | SECOND FLOOR - RESIDENTIAL PLAN |
| 4.2 | THIRD FLOOR PLAN |
| 5.1 | FOURTH FLOOR PLAN |
| 6.1 | FIFTH FLOOR PLAN |
| 7.1 | ROOF PLAN |
| 8.0 | EXTERIOR RENDERINGS |
| 8.1 | EXTERIOR ELEVATIONS |
| 8.2 | EXTERIOR ELEVATIONS - DESIGN EVOLUTION |
| 9.0 | EXTERIOR RENDERINGS |
| 9.1 | EXTERIOR ELEVATIONS |
| 9.2 | EXTERIOR ELEVATIONS - DESIGN EVOLUTION |
| 10.0 | SECTIONS |
| 11.0 | DETAILS |
| 12 | GROUND LEVEL - PLANTING PLAN |
| 13 | LEVEL 2 PLANTING PLAN |
| 14 | LEVEL 5 MATERIALS PLAN |
| 15 | PLANT MATERIAL SCHEDULE |
| 16 | PLANT MATERIAL IMAGERY |
| 17 | SITE PLAN - LIGHTING |
| 18 | LEVEL 2 FLOOR PLAN - LIGHTING PLAN |
| 19 | OVERALL ROOF PLAN - LIGHTING PLAN |

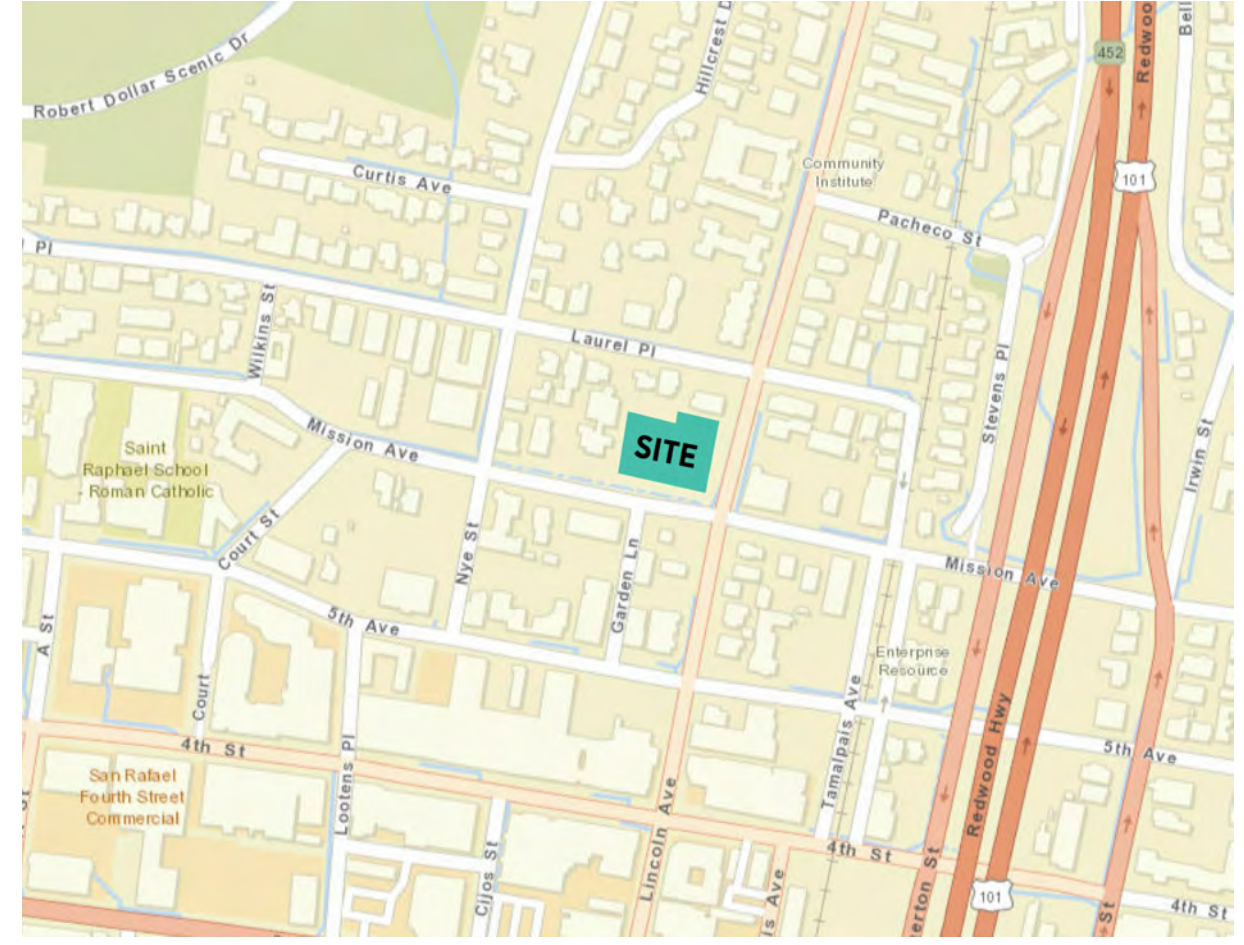
PROJECT DIRECTORY

GENERAL
APPLICANT
 AEGIS SENIOR COMMUNITIES
 415 118TH AVE SE
 BELLEVUE, WA 98005
 CONTACT: WALTER BRAUN
 BRYON ZIEGLER
 PHONE: (425) 861-9993
 EMAIL: walter.braun@aegisliving.com
 bryon.ziegler@aegisliving.com
ARCHITECT
 ANKROM MOISAN ARCHITECTS
 38 NEW DAVIS STREET, SUITE 300
 PORTLAND, OR 97209
 CONTACT: RYAN MIYAHIRA
 LAURIE LINVILLE-GREGSTON
 PHONE: (503)245-7100
 EMAIL: ryanm@ankrommoisan.com
 laurie@ankrommoisan.com

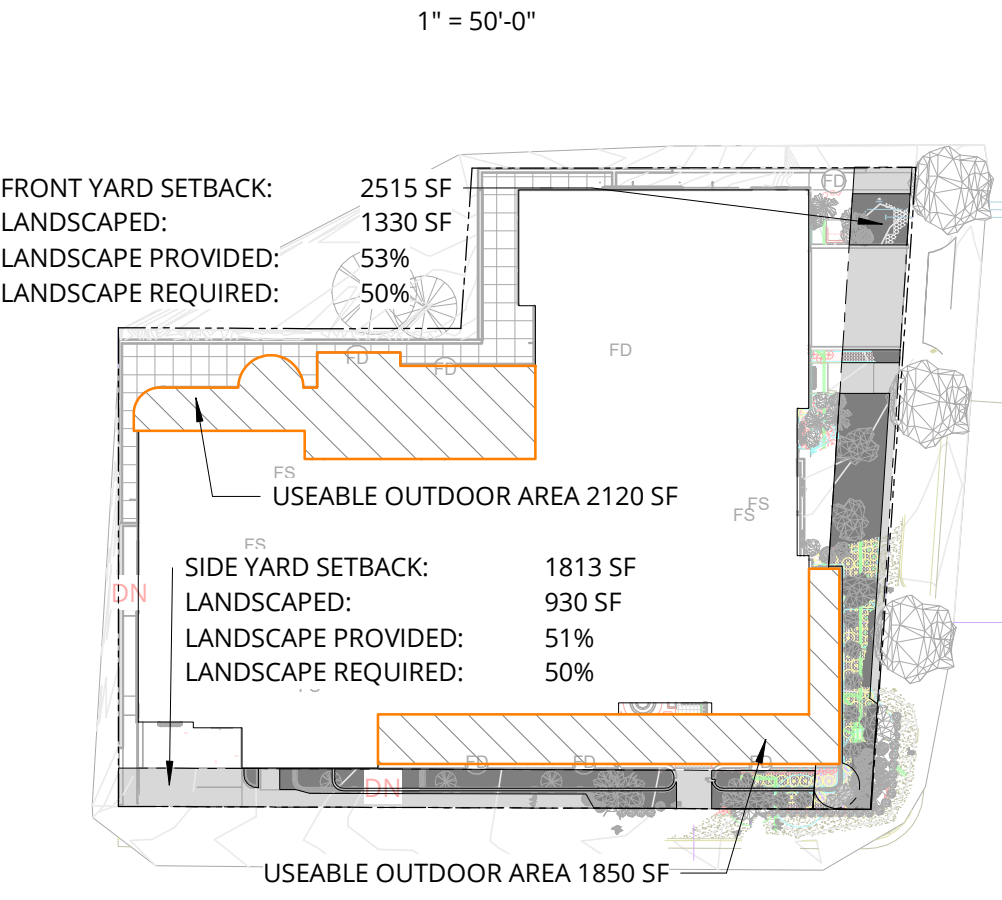
VICINITY IMAGE



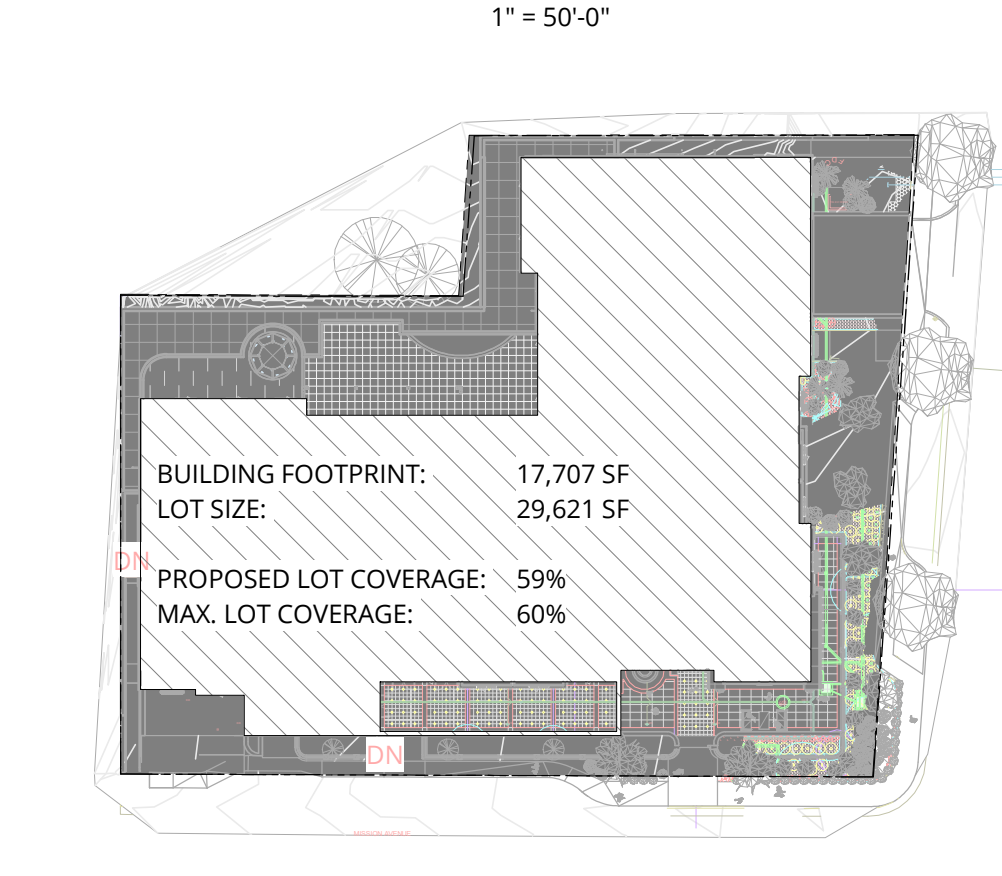
VICINITY MAP



LANDSCAPE DIAGRAM



LOT COVERAGE DIAGRAM



| UNIT SCHEDULE | | |
|----------------|-------|------------|
| UNIT TYPE | COUNT | AREA TOTAL |
| LEVEL 5 | | |
| AL.1 | 6 | 3547 |
| AL.5 | 16 | 5785 |
| | 22 | 9332 |
| LEVEL 4 | | |
| AL.1 | 2 | 1374 |
| AL.5 | 25 | 9578 |
| | 27 | 10952 |
| LEVEL 3 | | |
| LN.5 | 26 | 8935 |
| | 26 | 8935 |
| LEVEL 2 | | |
| LN.5 | 26 | 8972 |
| | 26 | 8972 |
| Grand total | 101 | 38191 |

NOT FOR CONSTRUCTION



38 NORTHWEST DAVIS, SUITE 300
 PORTLAND, OR 97209
 503.245.7100
 1505 5TH AVE, SUITE 300
 SEATTLE, WA 98101
 206.576.1600
 1014 HOWARD STREET
 SAN FRANCISCO, CA 94103
 415.252.7063
 © ANKROM MOISAN ARCHITECTS, INC.

AEGIS SAN RAFAEL
 800 MISSION AVENUE SAN RAFAEL CA 94901

ASC SAN RAFAEL LLC

| REVISION | DATE | REASON FOR ISSUE |
|----------|------|------------------|
| | | |
| | | |
| | | |
| | | |

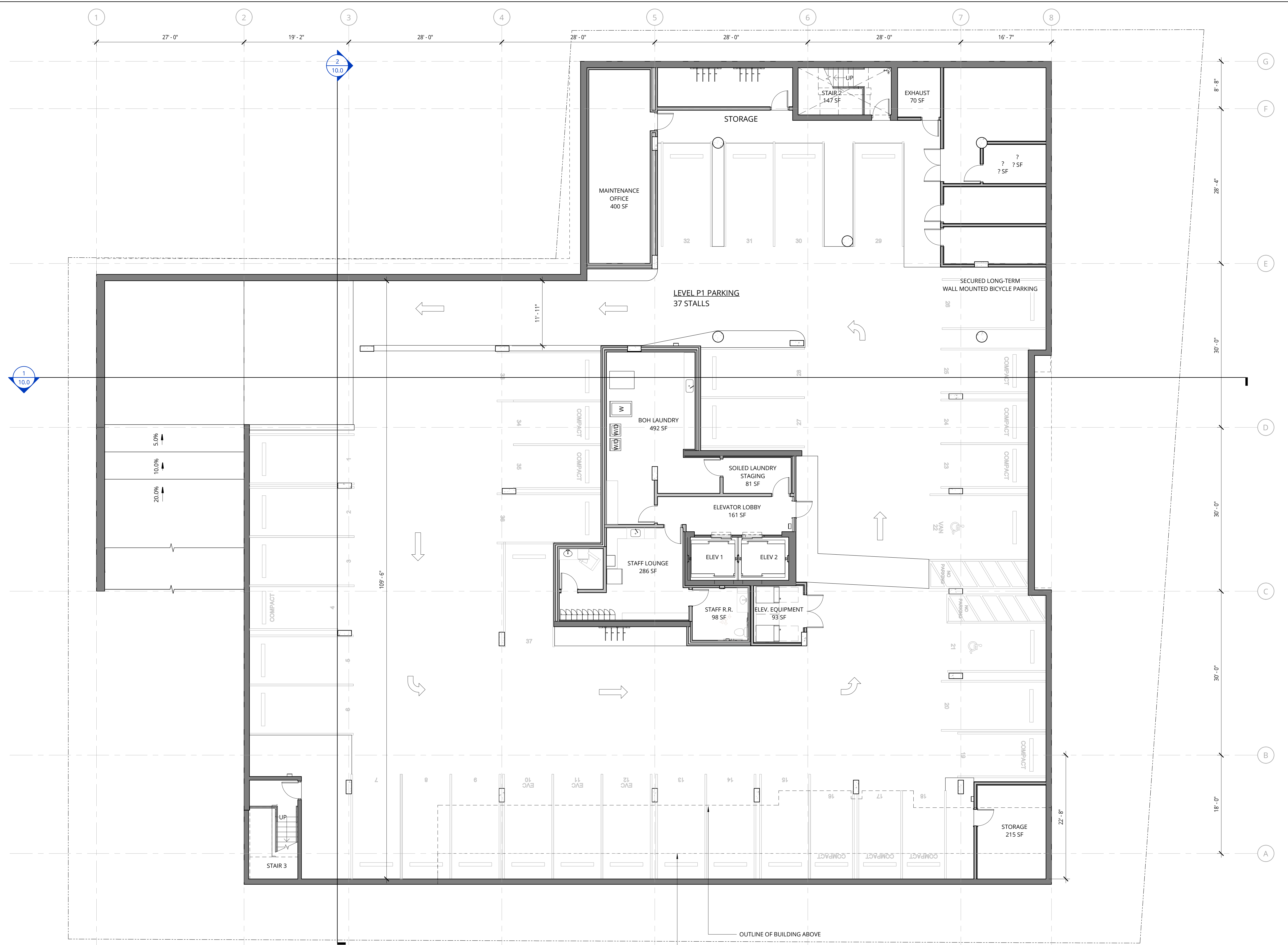
NOT FOR CONSTRUCTION
 THESE DOCUMENTS ARE INTENDED ONLY TO ILLUSTRATE GENERAL DESIGN ELEMENTS.
 DEVIATIONS MAY EXIST BETWEEN THESE DOCUMENTS AND DOCUMENTS THAT HAVE BEEN REVIEWED AND APPROVED BY THE CITY OF SAN RAFAEL PLANNING AUTHORITIES.

TITLE SHEET

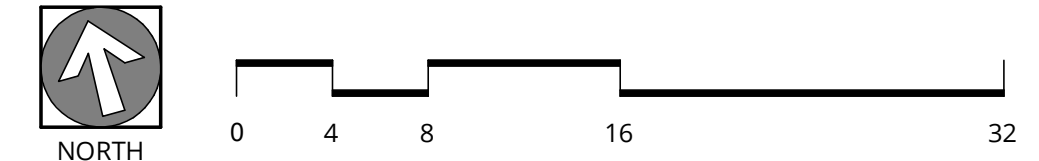
DRB

| | |
|-----------------------|--------------------------|
| DATE SEPT. 1, 2021 | PROJECT NUMBER 174170 |
|-----------------------|--------------------------|

SHEET NUMBER
1



1 LOWER GARAGE PLAN
1/8" = 1'-0"



NOT FOR CONSTRUCTION



38 NORTHWEST DAVIS, SUITE 300
PORTLAND, OR 97209
503.245.7100

1505 5TH AVE, SUITE 300
SEATTLE, WA 98101
206.576.1600

1014 HOWARD STREET
SAN FRANCISCO, CA 94103
415.252.7063

© ANKROM MOISAN ARCHITECTS, INC.

AEGIS SAN RAFAEL
800 MISSION AVENUE SAN RAFAEL CA 94901

ASC SAN RAFAEL LLC

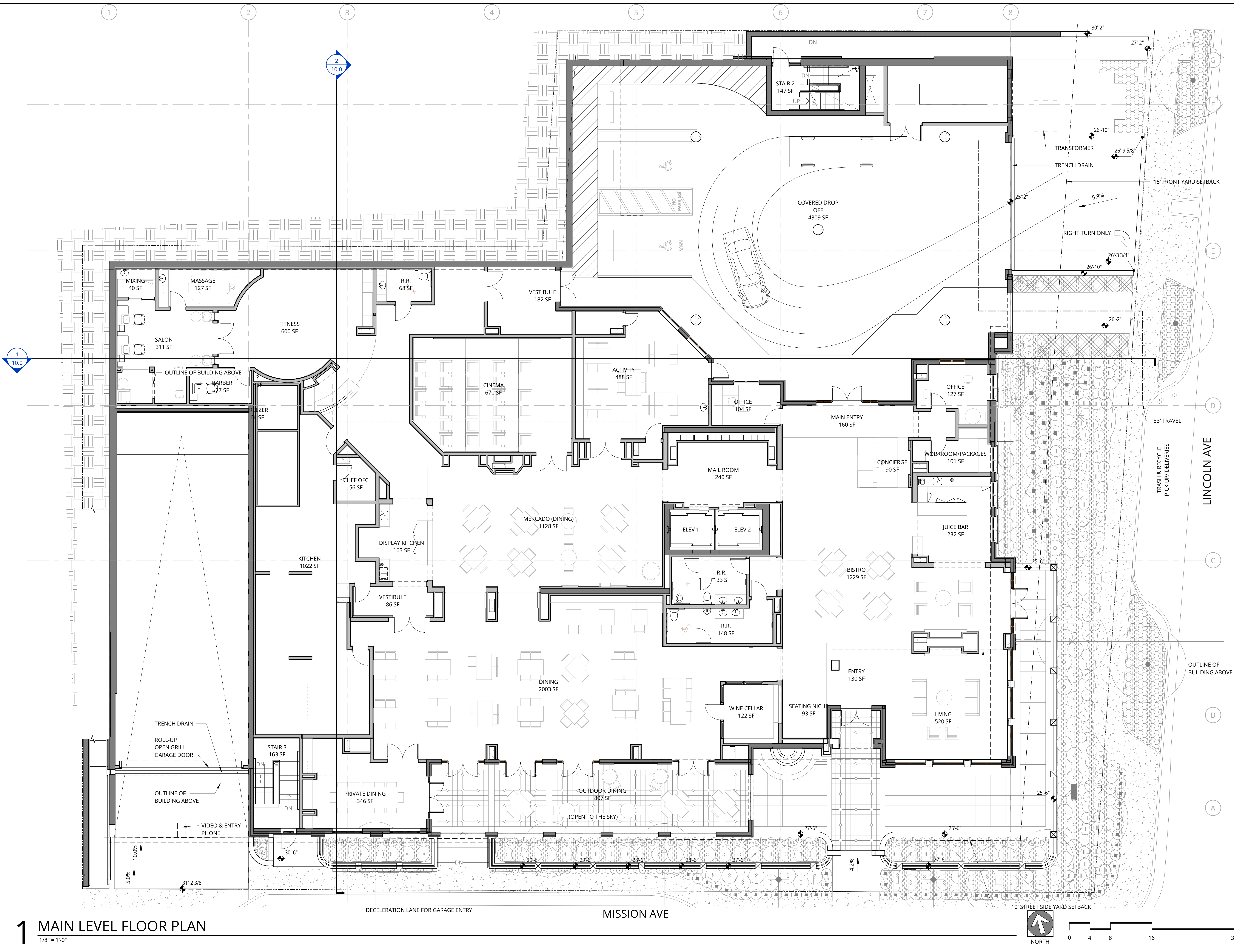
| REVISION | DATE | REASON FOR ISSUE |
|----------|------|------------------|
| | | |
| | | |
| | | |

LOWER GARAGE PLAN

DRB

| | |
|-----------------------|--------------------------|
| DATE SEPT. 1, 2021 | PROJECT NUMBER 174170 |
|-----------------------|--------------------------|

SHEET NUMBER
2.1



1 MAIN LEVEL FLOOR PLAN
 1/8" = 1'-0"

NOT FOR CONSTRUCTION



38 NORTHWEST DAVIS, SUITE 300
 PORTLAND, OR 97209
 503.245.7100

1505 5TH AVE, SUITE 300
 SEATTLE, WA 98101
 206.576.1600

1014 HOWARD STREET
 SAN FRANCISCO, CA 94103
 415.252.7063

© ANKROM MOISAN ARCHITECTS, INC.

AEGIS SAN RAFAEL
 800 MISSION AVENUE SAN RAFAEL CA 94901

ASC SAN RAFAEL LLC

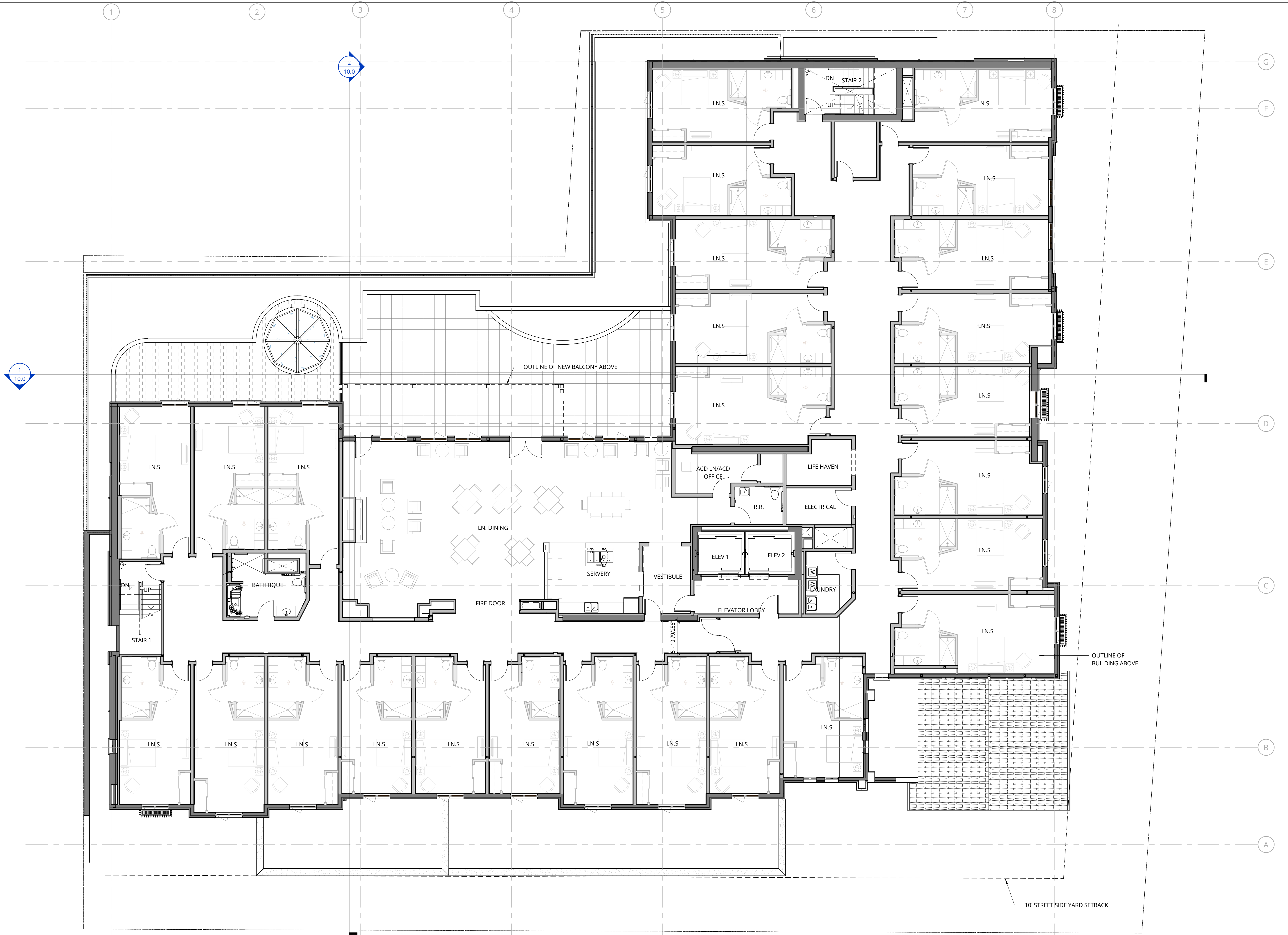
| REVISION | DATE | REASON FOR ISSUE |
|----------|------|------------------|
| | | |
| | | |
| | | |

MAIN LEVEL FLOOR PLAN

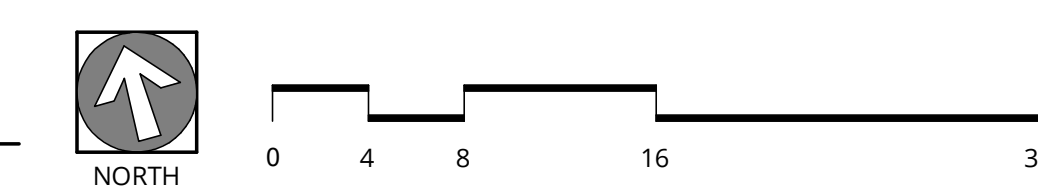
DRB

| | |
|-----------------------|--------------------------|
| DATE SEPT. 1, 2021 | PROJECT NUMBER 174170 |
|-----------------------|--------------------------|

SHEET NUMBER
3.1



1 SECOND FLOOR - RESIDENTIAL PLAN
1/8" = 1'-0"



NOT FOR CONSTRUCTION



38 NORTHWEST DAVIS, SUITE 300
PORTLAND, OR 97209
503.245.7100

1505 5TH AVE, SUITE 300
SEATTLE, WA 98101
206.576.1600

1014 HOWARD STREET
SAN FRANCISCO, CA 94103
415.252.7063

© ANKROM MOISAN ARCHITECTS, INC.

AGIS SAN RAFAEL
800 MISSION AVENUE SAN RAFAEL CA 94901

ASC SAN RAFAEL LLC

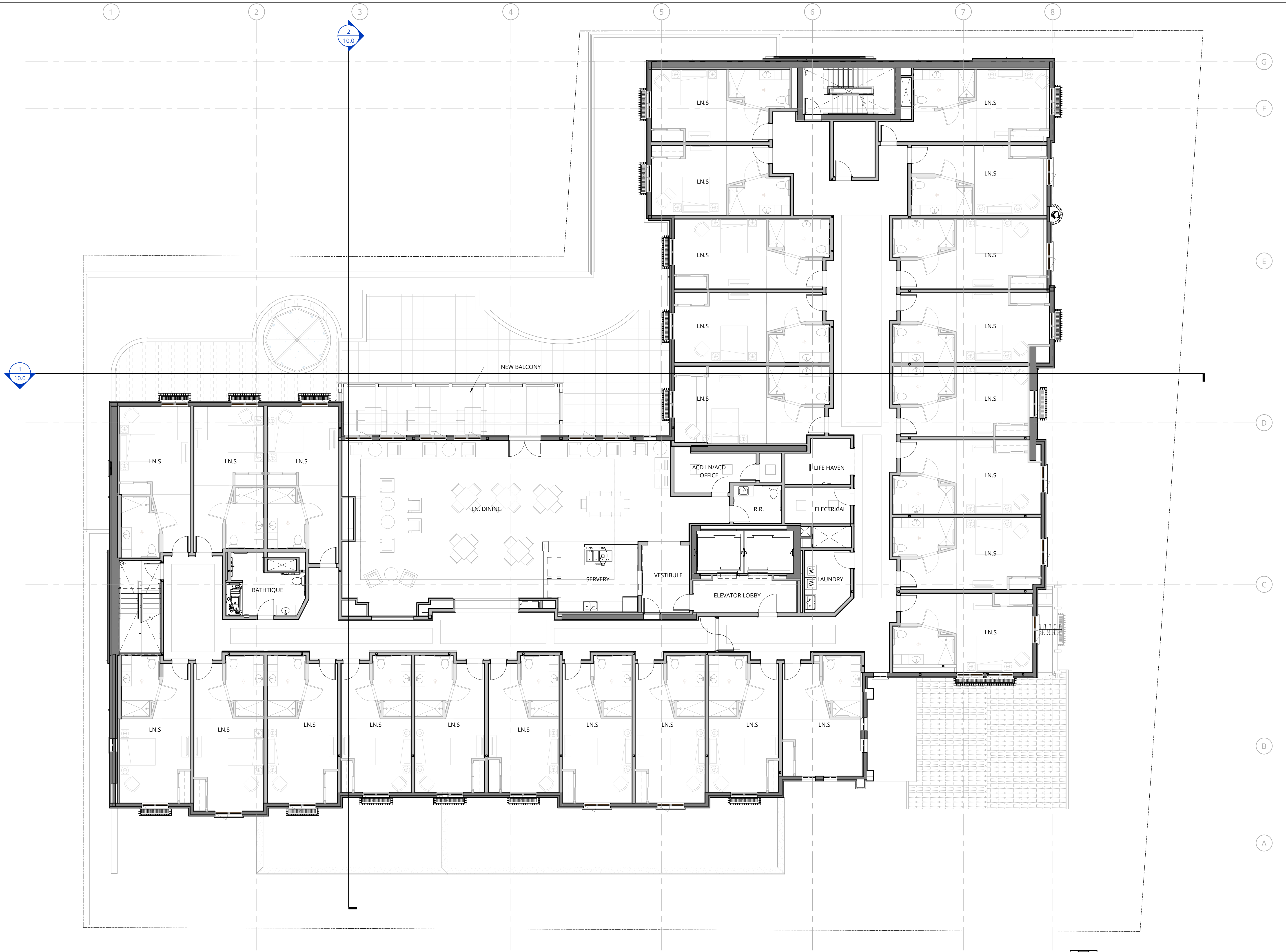
| REVISION | DATE | REASON FOR ISSUE |
|----------|------|------------------|
| | | |
| | | |
| | | |

SECOND FLOOR - RESIDENTIAL PLAN

DRB

| | |
|-----------------------|--------------------------|
| DATE SEPT. 1, 2021 | PROJECT NUMBER 174170 |
|-----------------------|--------------------------|

SHEET NUMBER
4.1



1 L3 FLOOR PLAN
1/8" = 1'-0"

**NOT FOR
CONSTRUCTION**



38 NORTHWEST DAVIS, SUITE 300
PORTLAND, OR 97209
503.245.7100

1505 5TH AVE, SUITE 300
SEATTLE, WA 98101
206.576.1600

1014 HOWARD STREET
SAN FRANCISCO, CA 94103
415.252.7063

© ANKROM MOISAN ARCHITECTS, INC.

AEGIS SAN RAFAEL
800 MISSION AVENUE SAN RAFAEL CA 94901

ASC SAN RAFAEL LLC

| REVISION | DATE | REASON FOR ISSUE |
|----------|------|------------------|
| | | |
| | | |
| | | |

L3 FLOOR PLAN

DRB

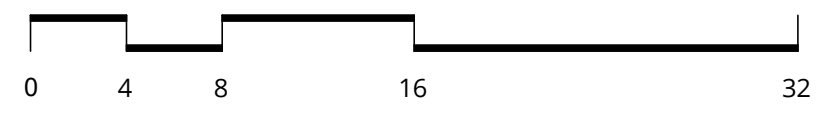
| | |
|-----------------------|--------------------------|
| DATE SEPT. 1, 2021 | PROJECT NUMBER 174170 |
|-----------------------|--------------------------|

SHEET NUMBER

4.2



1 L4 FLOOR PLAN
1/8" = 1'-0"



NOT FOR CONSTRUCTION



38 NORTHWEST DAVIS, SUITE 300
PORTLAND, OR 97209
503.245.7100

1505 5TH AVE, SUITE 300
SEATTLE, WA 98101
206.576.1600

1014 HOWARD STREET
SAN FRANCISCO, CA 94103
415.252.7063

© ANKROM MOISAN ARCHITECTS, INC.

AEGIS SAN RAFAEL
800 MISSION AVENUE SAN RAFAEL CA 94901

ASC SAN RAFAEL LLC

| REVISION | DATE | REASON FOR ISSUE |
|----------|------|------------------|
| | | |
| | | |
| | | |

L4 FLOOR PLAN

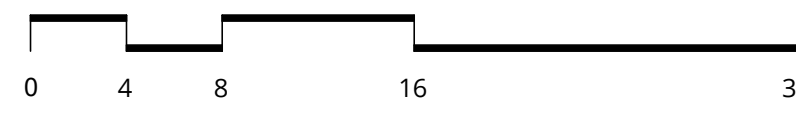
DRB

| | |
|-----------------------|--------------------------|
| DATE SEPT. 1, 2021 | PROJECT NUMBER 174170 |
|-----------------------|--------------------------|

SHEET NUMBER
5.1



1 L5 FLOOR PLAN
1/8" = 1'-0"



NOT FOR CONSTRUCTION



38 NORTHWEST DAVIS, SUITE 300
PORTLAND, OR 97209
503.245.7100

1505 5TH AVE, SUITE 300
SEATTLE, WA 98101
206.576.1600

1014 HOWARD STREET
SAN FRANCISCO, CA 94103
415.252.7063

© ANKROM MOISAN ARCHITECTS, INC.

AEGIS SAN RAFAEL
800 MISSION AVENUE SAN RAFAEL CA 94901

ASC SAN RAFAEL LLC

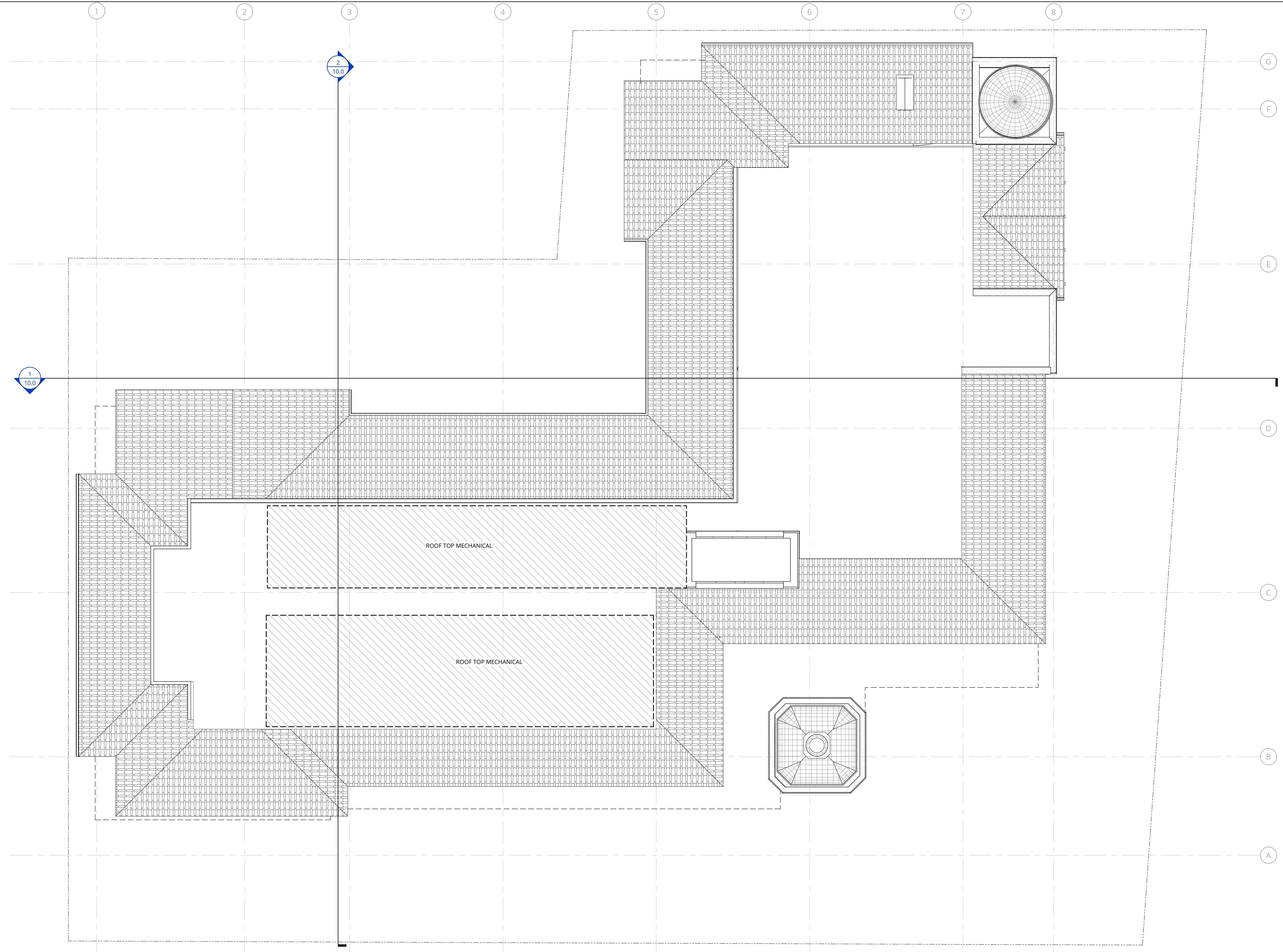
| REVISION | DATE | REASON FOR ISSUE |
|----------|------|------------------|
| | | |
| | | |
| | | |

L5 FLOOR PLAN

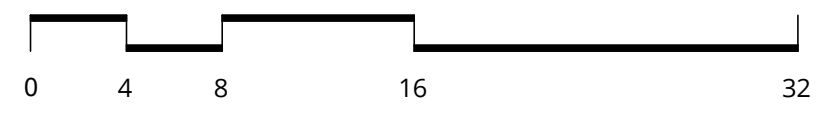
DRB

DATE: SEPT. 1, 2021 PROJECT NUMBER: 174170

SHEET NUMBER: **6.1**



1 ROOF PLAN
1/8" = 1'-0"



NOT FOR CONSTRUCTION



38 NORTHWEST DAVIS, SUITE 300
PORTLAND, OR 97209
503.245.7100

1505 5TH AVE, SUITE 300
SEATTLE, WA 98101
206.576.1600

1014 HOWARD STREET
SAN FRANCISCO, CA 94103
415.252.7063

© ANKROM MOISAN ARCHITECTS, INC.

AEGIS SAN RAFAEL
800 MISSION AVENUE SAN RAFAEL CA 94901

ASC SAN RAFAEL LLC

| REVISION | DATE | REASON FOR ISSUE |
|----------|------|------------------|
| | | |
| | | |
| | | |

ROOF PLAN

DRB

| | |
|-----------------------|--------------------------|
| DATE SEPT. 1, 2021 | PROJECT NUMBER 174170 |
|-----------------------|--------------------------|

SHEET NUMBER
7.1



VIEW FROM INTERSECTION - MID DAY



VIEW FROM INTERSECTION - NIGHT TIME



VIEW FROM SOUTHWEST

**NOT FOR
CONSTRUCTION**



38 NORTHWEST DAVIS, SUITE 300
PORTLAND, OR 97209
503.245.7100

1505 5TH AVE, SUITE 300
SEATTLE, WA 98101
206.576.1600

1014 HOWARD STREET
SAN FRANCISCO, CA 94103
415.252.7063

© ANKROM MOISAN ARCHITECTS, INC.

AEGIS SAN RAFAEL
800 MISSION AVENUE SAN RAFAEL CA 94901

ASC SAN RAFAEL LLC

| REVISION | DATE | REASON FOR ISSUE |
|----------|------|------------------|
| | | |
| | | |
| | | |

**EXTERIOR
RENDERINGS**

DRB

| | |
|-----------------------|--------------------------|
| DATE SEPT. 1, 2021 | PROJECT NUMBER 174170 |
|-----------------------|--------------------------|

SHEET NUMBER

9/1/2021 5:25:32 PM

NOT FOR CONSTRUCTION



38 NORTHWEST DAVIS, SUITE 300
PORTLAND, OR 97209
503.245.7100

1505 5TH AVE, SUITE 300
SEATTLE, WA 98101
206.576.1600

1014 HOWARD STREET
SAN FRANCISCO, CA 94103
415.252.7063
© ANKROM MOISAN ARCHITECTS, INC.

AEGIS SAN RAFAEL
800 MISSION AVENUE SAN RAFAEL CA 94901

ASC SAN RAFAEL LLC

| REVISION | DATE | REASON FOR ISSUE |
|----------|------|------------------|
| | | |
| | | |
| | | |

EXTERIOR ELEVATIONS

DRB

DATE: SEPT. 1, 2021 PROJECT NUMBER: 174170

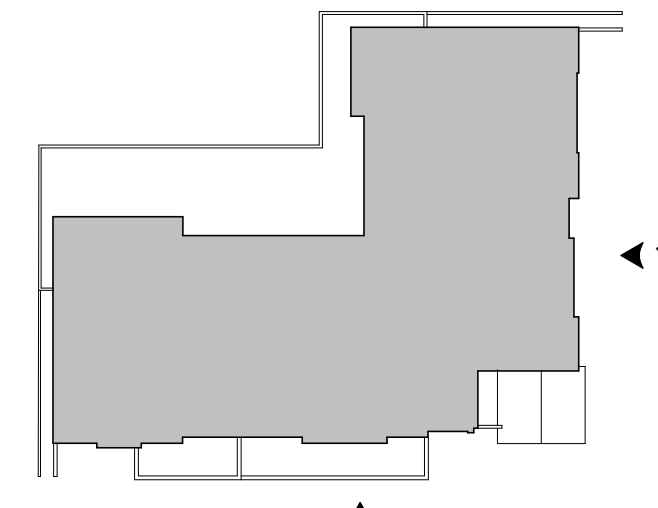
SHEET NUMBER: 8.1



1 EAST ELEVATION - PROPOSED DESIGN
1/8" = 1'-0"



2 SOUTH ELEVATION - PROPOSED DESIGN
1/8" = 1'-0"



KEY MAP

C:\Users\matw\Documents\174170-04-AEGIS San Rafael_Central.mxd\DWG\DRB.rvt



1 EAST ELEVATION - DRB IN MAY 2021
1/16"=1'-0"



SOUTH ELEVATION - DRB IN MAY 2021
1/16"=1'-0"



2 EAST ELEVATION - PROPOSED DRB DESIGN
1/16" = 1'-0"



SOUTH ELEVATION - PROPOSED DRB DESIGN
1/16" = 1'-0"

**NOT FOR
CONSTRUCTION**



38 NORTHWEST DAVIS, SUITE 300
PORTLAND, OR 97209
503.245.7100

1505 5TH AVE, SUITE 300
SEATTLE, WA 98101
206.576.1600

1014 HOWARD STREET
SAN FRANCISCO, CA 94103
415.252.7063

© ANKROM MOISAN ARCHITECTS, INC.

AGIS SAN RAFAEL
800 MISSION AVENUE SAN RAFAEL CA 94901

ASC SAN RAFAEL LLC

| REVISION | DATE | REASON FOR ISSUE |
|----------|------|------------------|
| | | |
| | | |
| | | |

**EXTERIOR
ELEVATIONS -
DESIGN EVOLUTION
DRB**

| | |
|-----------------------|--------------------------|
| DATE SEPT. 1, 2021 | PROJECT NUMBER 174170 |
|-----------------------|--------------------------|

SHEET NUMBER

8.2



VIEW FROM SOUTHEAST



VIEW FROM NORTHEAST

**NOT FOR
CONSTRUCTION**



38 NORTHWEST DAVIS, SUITE 300
PORTLAND, OR 97209
503.245.7100

1505 5TH AVE, SUITE 300
SEATTLE, WA 98101
206.576.1600

1014 HOWARD STREET
SAN FRANCISCO, CA 94103
415.252.7063

© ANKROM MOISAN ARCHITECTS, INC.

AEGIS SAN RAFAEL
800 MISSION AVENUE SAN RAFAEL CA 94901

ASC SAN RAFAEL LLC

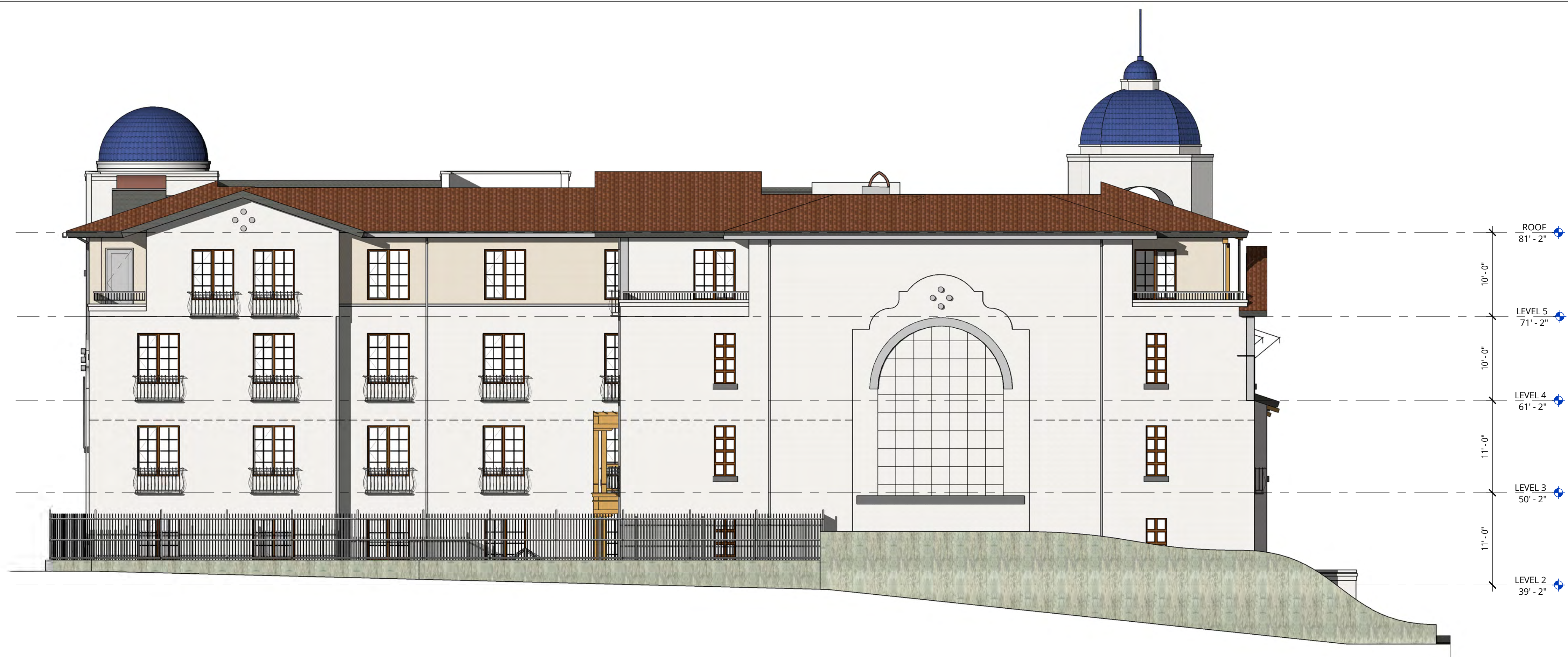
| REVISION | DATE | REASON FOR ISSUE |
|----------|------|------------------|
| | | |
| | | |
| | | |

**EXTERIOR
RENDERINGS**

DRB

| | |
|-----------------------|--------------------------|
| DATE SEPT. 1, 2021 | PROJECT NUMBER 174170 |
|-----------------------|--------------------------|

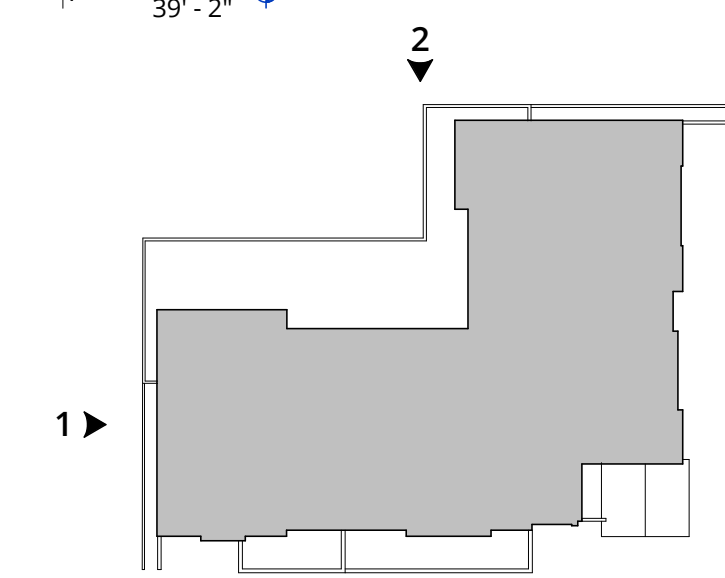
SHEET NUMBER



1 WEST ELEVATION - PROPOSED
1/8" = 1'-0"



2 NORTH ELEVATION - PROPOSED
1/8" = 1'-0"



KEY MAP

**NOT FOR
CONSTRUCTION**



38 NORTHWEST DAVIS, SUITE 300
PORTLAND, OR 97209
503.245.7100

1505 5TH AVE, SUITE 300
SEATTLE, WA 98101
206.576.1600

1014 HOWARD STREET
SAN FRANCISCO, CA 94103
415.252.7063

© ANKROM MOISAN ARCHITECTS, INC.

AEGIS SAN RAFAEL
800 MISSION AVENUE SAN RAFAEL CA 94901

ASC SAN RAFAEL LLC

| REVISION | DATE | REASON FOR ISSUE |
|----------|------|------------------|
| | | |
| | | |

EXTERIOR
ELEVATIONS

DRB

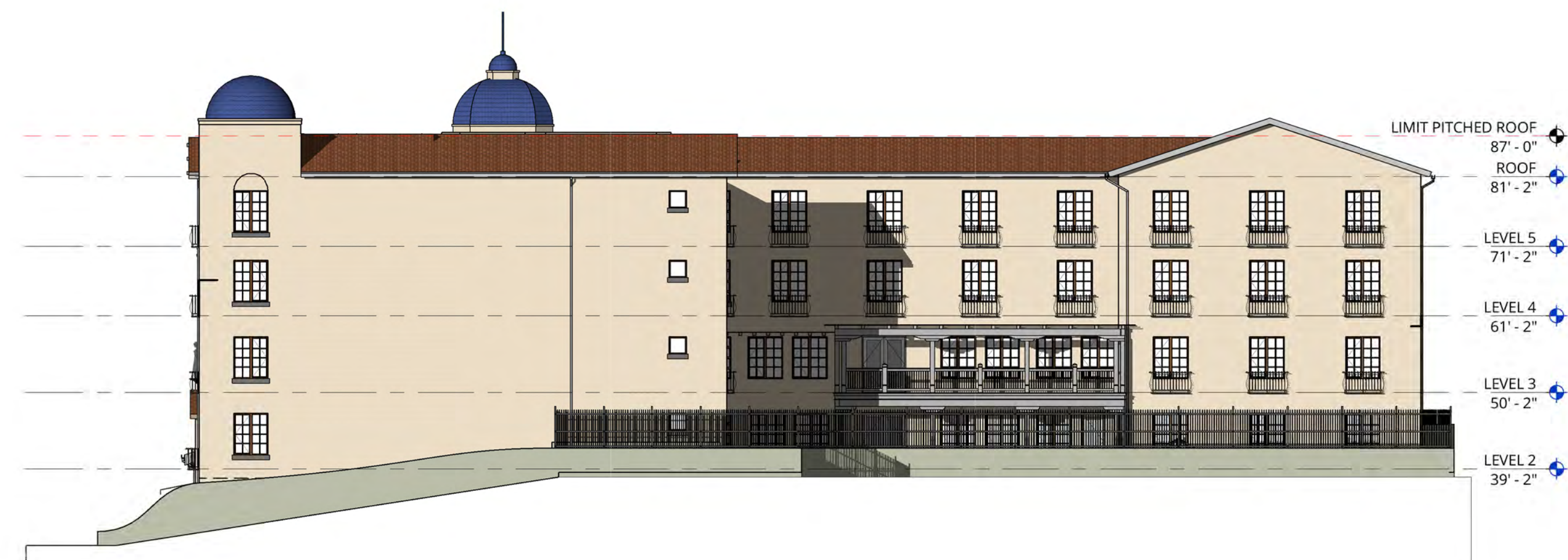
| | |
|-----------------------|--------------------------|
| DATE SEPT. 1, 2021 | PROJECT NUMBER 174170 |
|-----------------------|--------------------------|

SHEET NUMBER

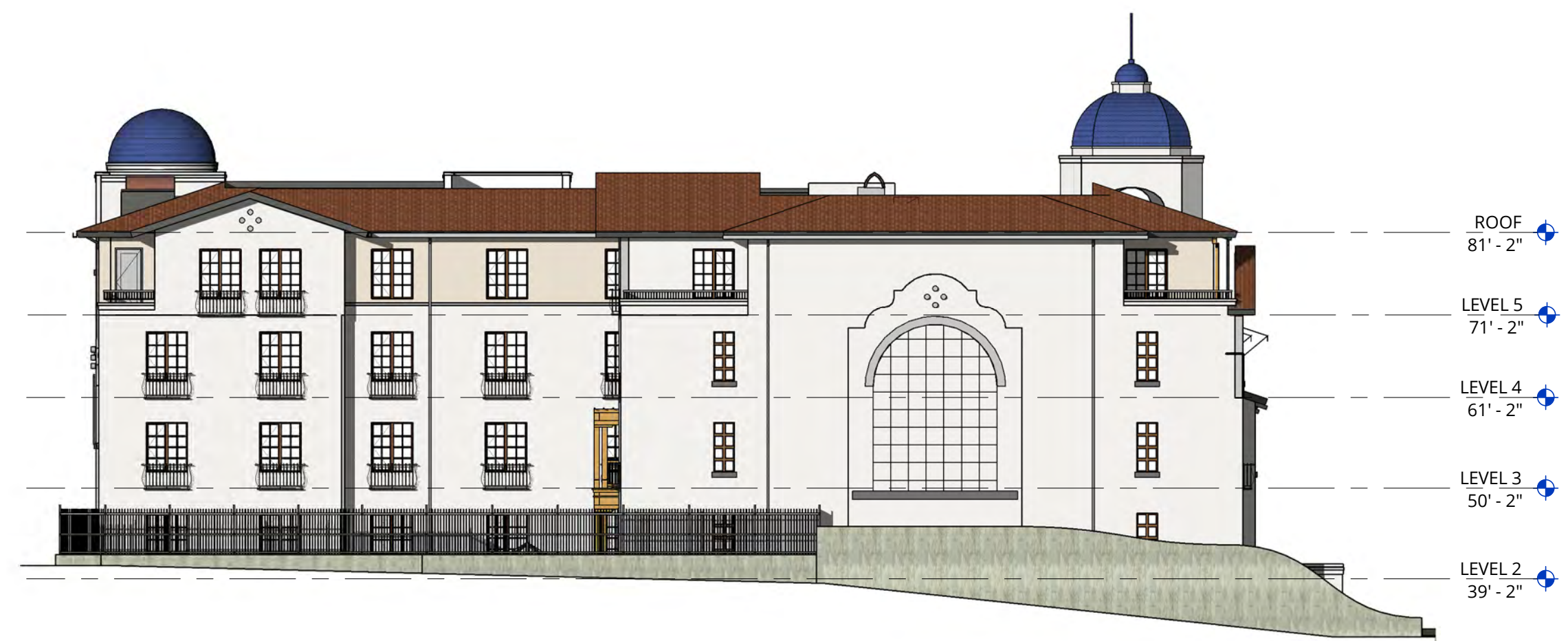
9.1



1 WEST ELEVATION - DRB IN MAY 2021
1/16"=1'-0"



NORTH ELEVATION - DRB IN MAY 2021
1/16"=1'-0"



2 WEST ELEVATION - PROPOSED DRB DESIGN
1/16" = 1'-0"



NORTH ELEVATION - PROPOSED DRB DESIGN
1/16" = 1'-0"

**NOT FOR
CONSTRUCTION**



38 NORTHWEST DAVIS, SUITE 300
PORTLAND, OR 97209
503.245.7100

1505 5TH AVE, SUITE 300
SEATTLE, WA 98101
206.576.1600

1014 HOWARD STREET
SAN FRANCISCO, CA 94103
415.252.7063

© ANKROM MOISAN ARCHITECTS, INC.

AGIS SAN RAFAEL
800 MISSION AVENUE SAN RAFAEL CA 94901

ASC SAN RAFAEL LLC

| REVISION | DATE | REASON FOR ISSUE |
|----------|------|------------------|
| | | |
| | | |
| | | |

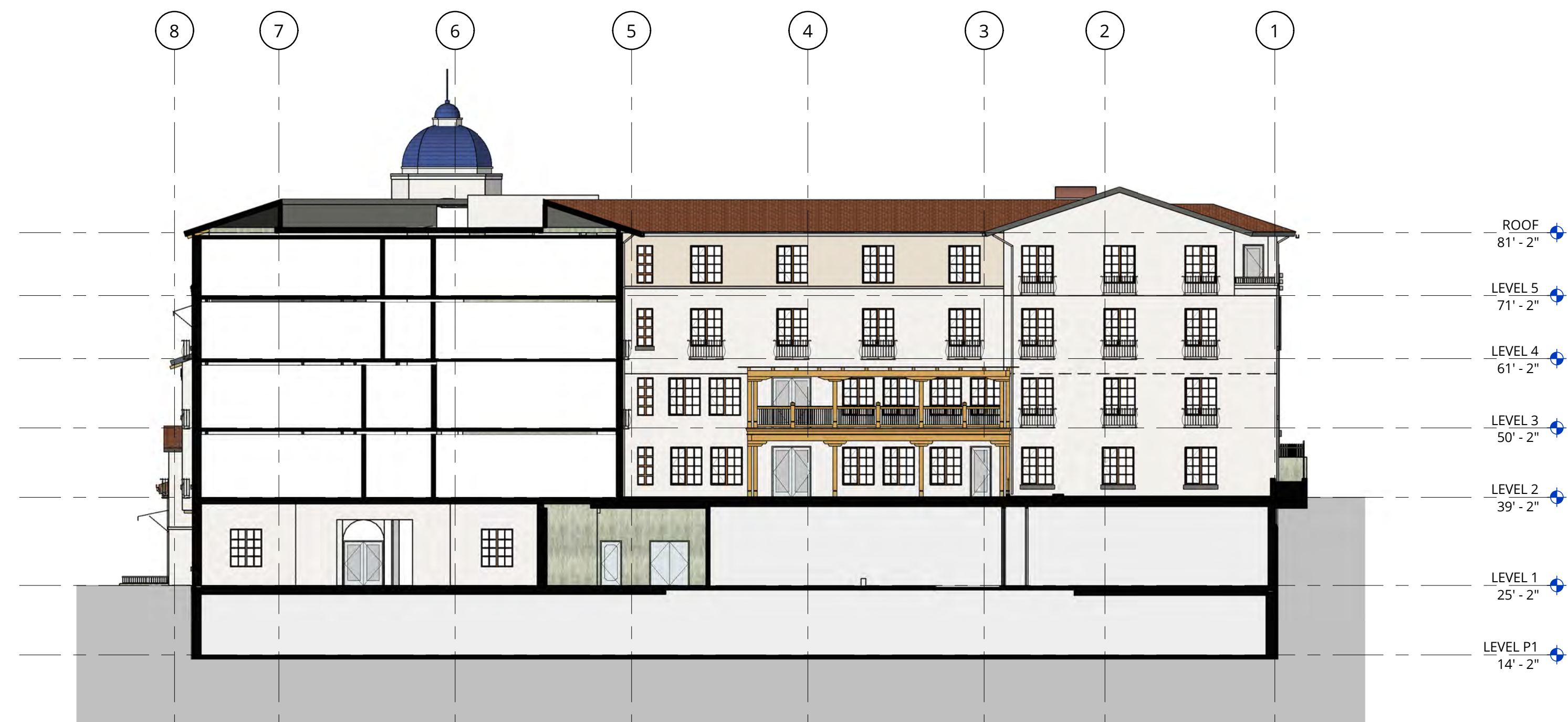
EXTERIOR
ELEVATIONS -
DESIGN EVOLUTION
DRB

DATE
SEPT. 1, 2021

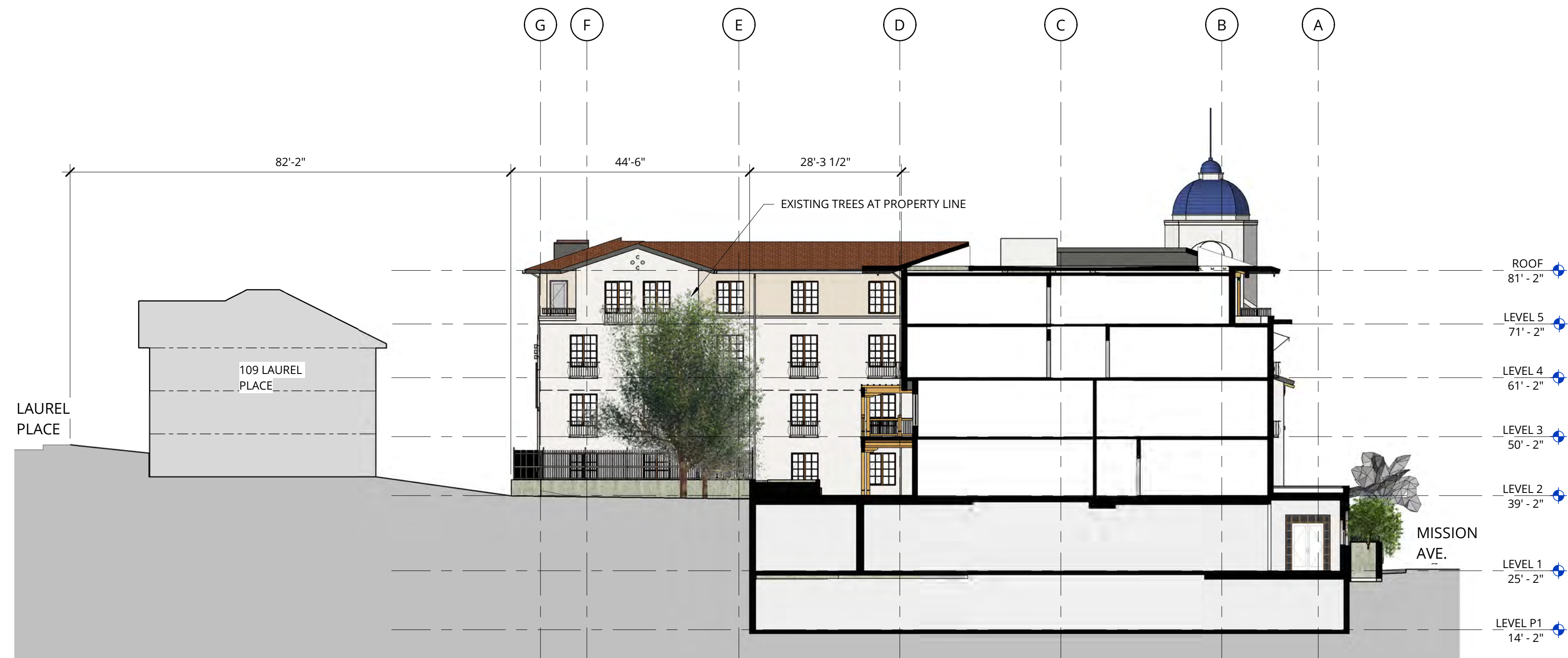
PROJECT NUMBER
174170

SHEET NUMBER

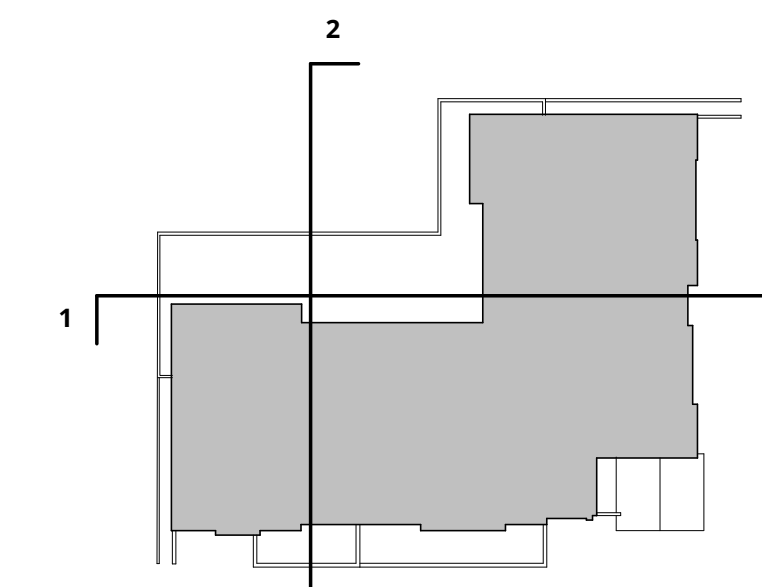
9.2



1 BUILDING SECTION - WEST - EAST
1/16" = 1'-0"



2 BUILDING SECTION - NORTH - SOUTH
1/16" = 1'-0"



KEY MAP

NOT FOR CONSTRUCTION



38 NORTHWEST DAVIS, SUITE 300
PORTLAND, OR 97209
503.245.7100

1505 5TH AVE, SUITE 300
SEATTLE, WA 98101
206.576.1600

1014 HOWARD STREET
SAN FRANCISCO, CA 94103
415.252.7063

© ANKROM MOISAN ARCHITECTS, INC.

AEGIS SAN RAFAEL
800 MISSION AVENUE SAN RAFAEL CA 94901

ASC SAN RAFAEL LLC

| REVISION | DATE | REASON FOR ISSUE |
|----------|------|------------------|
| | | |
| | | |
| | | |

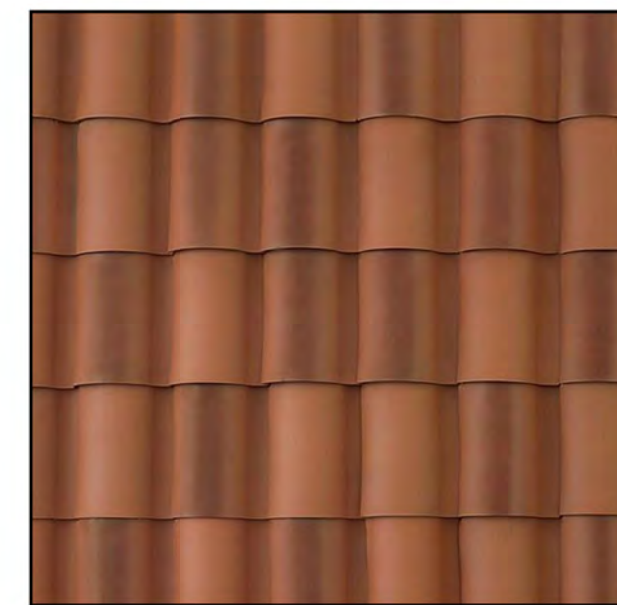
SECTIONS

DRB

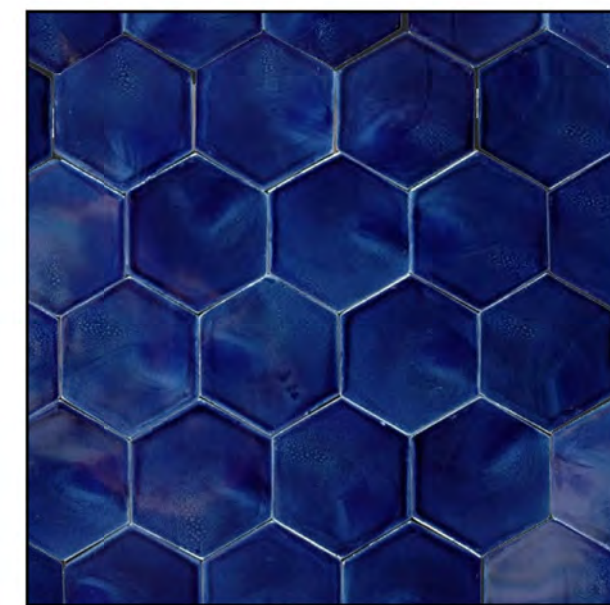
| | |
|-----------------------|--------------------------|
| DATE SEPT. 1, 2021 | PROJECT NUMBER 174170 |
|-----------------------|--------------------------|

SHEET NUMBER

10.0



1. TILE ROOF



2. BLUE ROOF TILE



3. TIMBER DETAILING



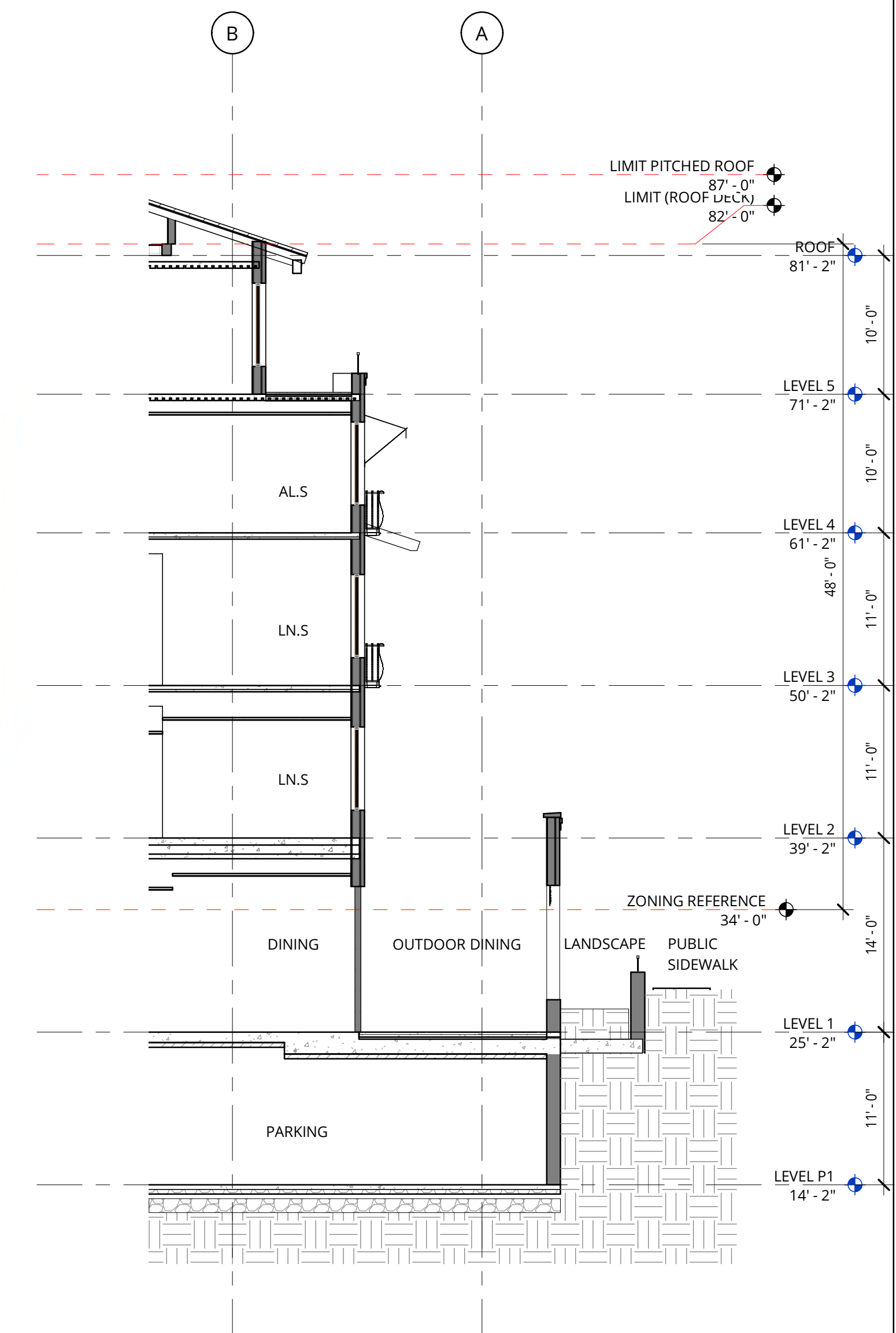
4. WROUGHT IRON



5. STUCCO



6. FABRIC AWNINGS



1 WALL SECTION
1/8" = 1'-0"

**NOT FOR
CONSTRUCTION**



Ankrom Moisan™

38 NORTHWEST DAVIS, SUITE 300
PORTLAND, OR 97209
503.245.7100

1505 5TH AVE, SUITE 300
SEATTLE, WA 98101
206.576.1600

1014 HOWARD STREET
SAN FRANCISCO, CA 94103
415.252.7063

© ANKROM MOISAN ARCHITECTS, INC.

AEGIS SAN RAFAEL
800 MISSION AVENUE SAN RAFAEL CA 94901

ASC SAN RAFAEL LLC

| REVISION | DATE | REASON FOR ISSUE |
|----------|------|------------------|
| | | |
| | | |
| | | |

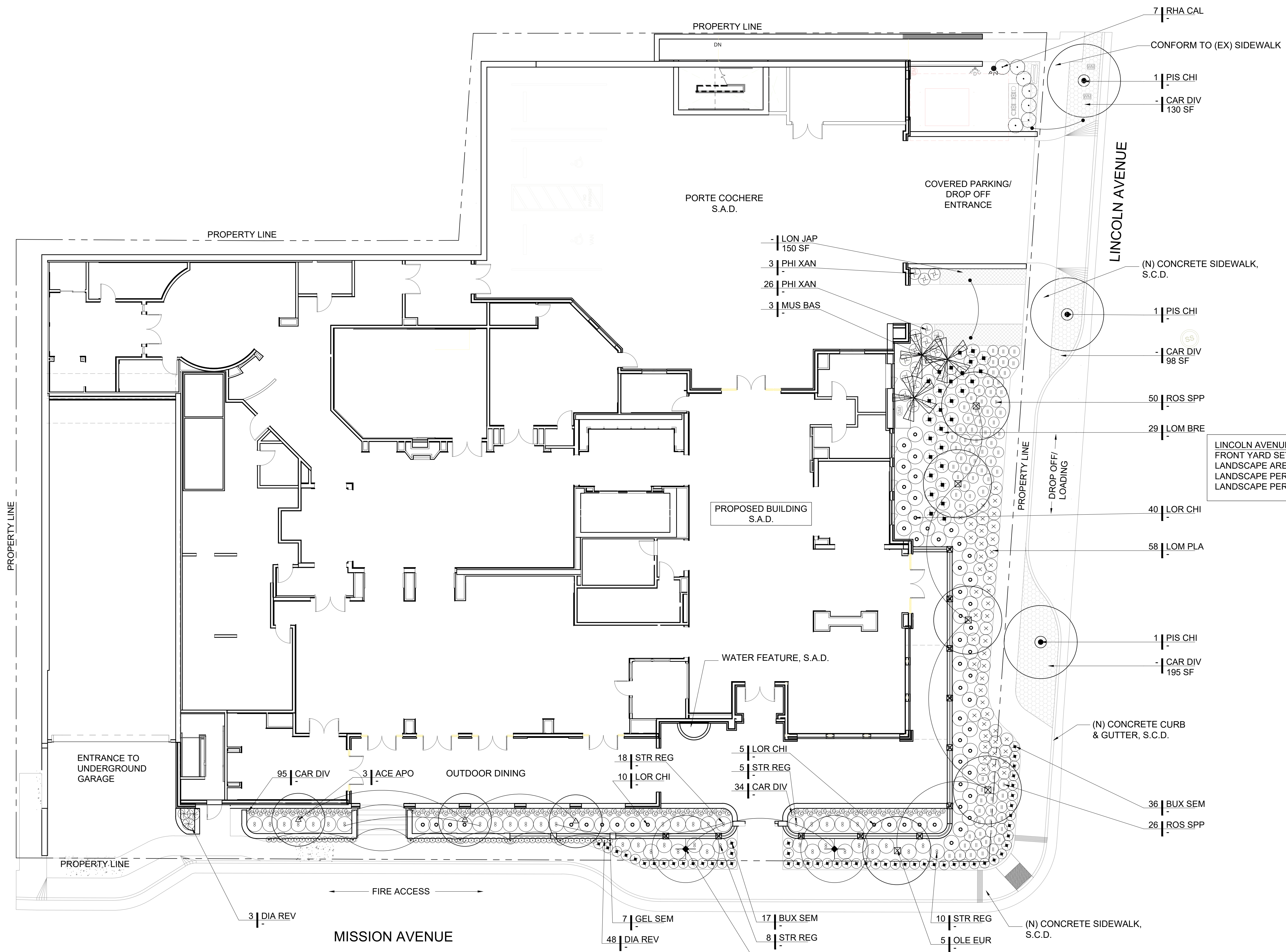
DETAILS

DRB

| | |
|-----------------------|--------------------------|
| DATE SEPT. 1, 2021 | PROJECT NUMBER 174170 |
|-----------------------|--------------------------|

SHEET NUMBER

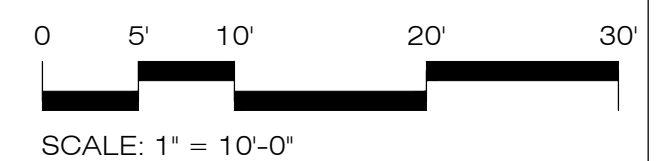
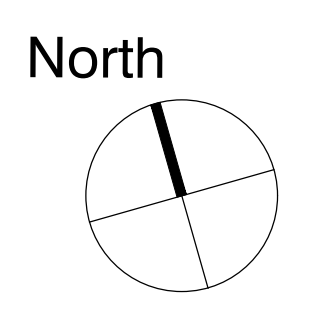
11.0



LINCOLN AVENUE LANDSCAPE:
 FRONT YARD SETBACK AREA: 2,515 SF
 LANDSCAPE AREA: 1,299 SF
 LANDSCAPE PERCENTAGE PROVIDED: 52%
 LANDSCAPE PERCENTAGE REQUIRED: 50%

MISSION AVENUE LANDSCAPE:
 SIDE YARD SETBACK AREA: 1,813 SF
 LANDSCAPE AREA: 910 SF
 LANDSCAPE PERCENTAGE PROVIDED: 50%
 LANDSCAPE PERCENTAGE REQUIRED: 50%

NOTE:
 1. SEE SHEET 16 FOR PLANT MATERIAL SCHEDULE & IMAGERY.



01 GROUND LEVEL PLANTING PLAN



38 NORTHWEST DAVIS, SUITE 300
 PORTLAND, OR 97209
 503.245.7100
 1505 5TH AVE, SUITE 300
 SEATTLE, WA 98101
 206.576.1600
 1014 HOWARD STREET
 SAN FRANCISCO, CA 94103
 415.252.7063
 © ANKROM MOISAN ARCHITECTS, INC.



Landscape Architecture
 232 Sir Francis Drake Blvd.
 San Anselmo, CA 94960
 Phone: (415) 721-0905
 Fax: (415) 721-0910
 Email: info@studiogreen.com
 www.studiogreen.com

AGIS SAN RAFAEL
 800 MISSION AVENUE SAN RAFAEL CA 94549

ASC SAN RAFAEL LLC

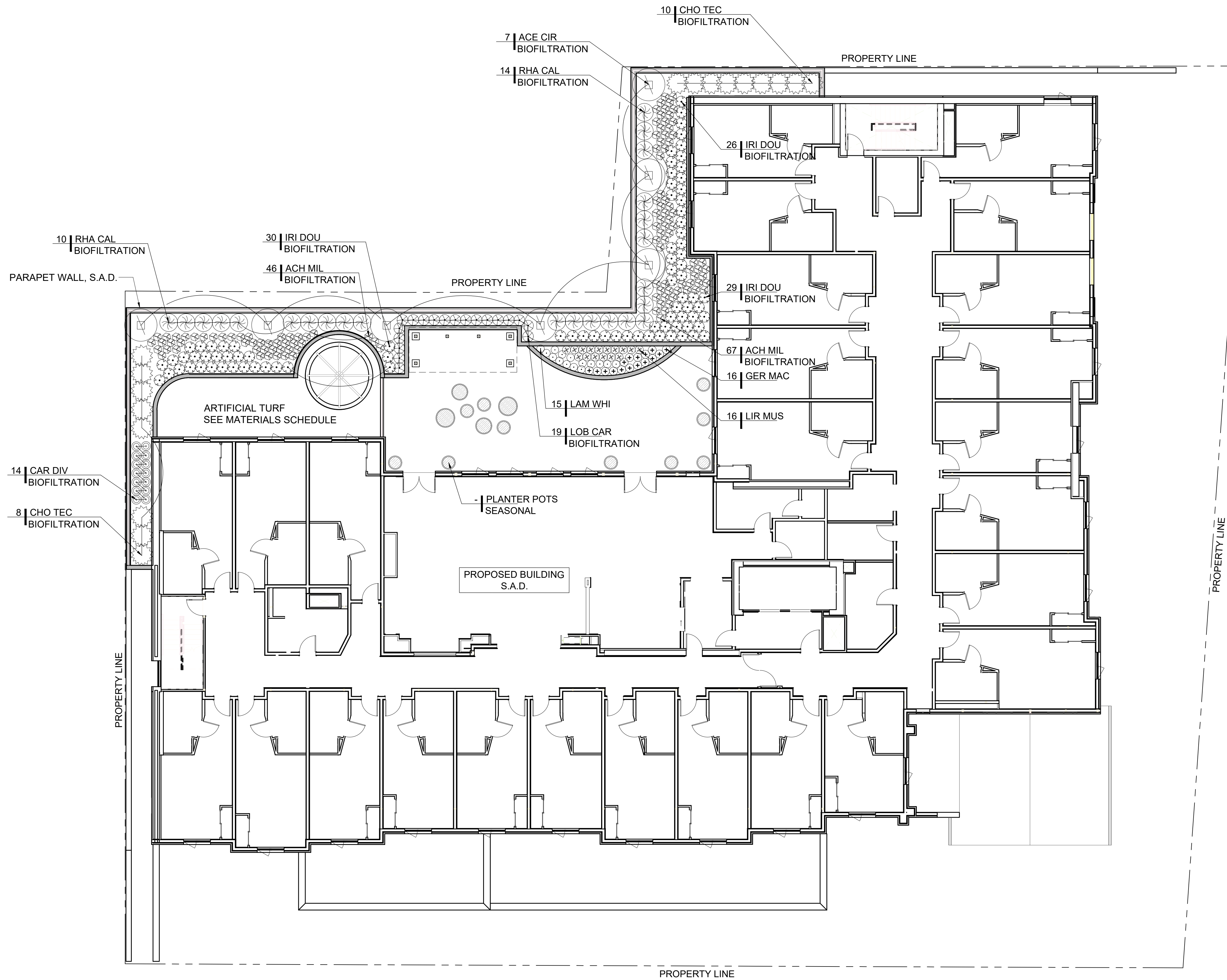
| REVISION | DATE | REASON FOR ISSUE |
|----------|------|------------------|
| | | |
| | | |
| | | |
| | | |

GROUND LEVEL PLANTING PLAN

PLANNING

| | |
|-------------|----------------|
| DATE | PROJECT NUMBER |
| MAR 3, 2021 | 174170 |

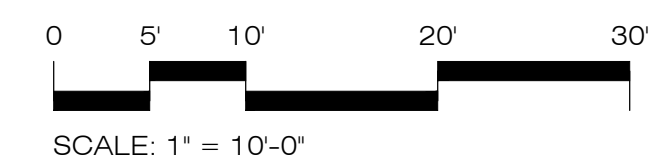
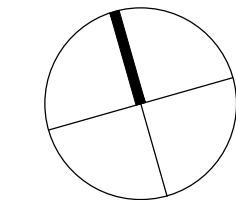
SHEET NUMBER



01 LEVEL 2 PLANTING PLAN

NOTE:
1. SEE SHEET 16 FOR PLANT MATERIAL SCHEDULE & IMAGERY.

North



38 NORTHWEST DAVIS, SUITE 300
PORTLAND, OR 97209
503.245.7100

1505 5TH AVE, SUITE 300
SEATTLE, WA 98101
206.576.1600

1014 HOWARD STREET
SAN FRANCISCO, CA 94103
415.252.7063
© ANKROM MOISAN ARCHITECTS, INC.



Landscape Architecture
232 Sir Francis Drake Blvd.
San Anselmo, CA 94960
Phone: (415) 721-0905
Fax: (415) 721-0910
Email: info@studiogreen.com
www.studiogreen.com

AEGIS SAN RAFAEL
800 MISSION AVENUE SAN RAFAEL CA 94549

ASC SAN RAFAEL LLC

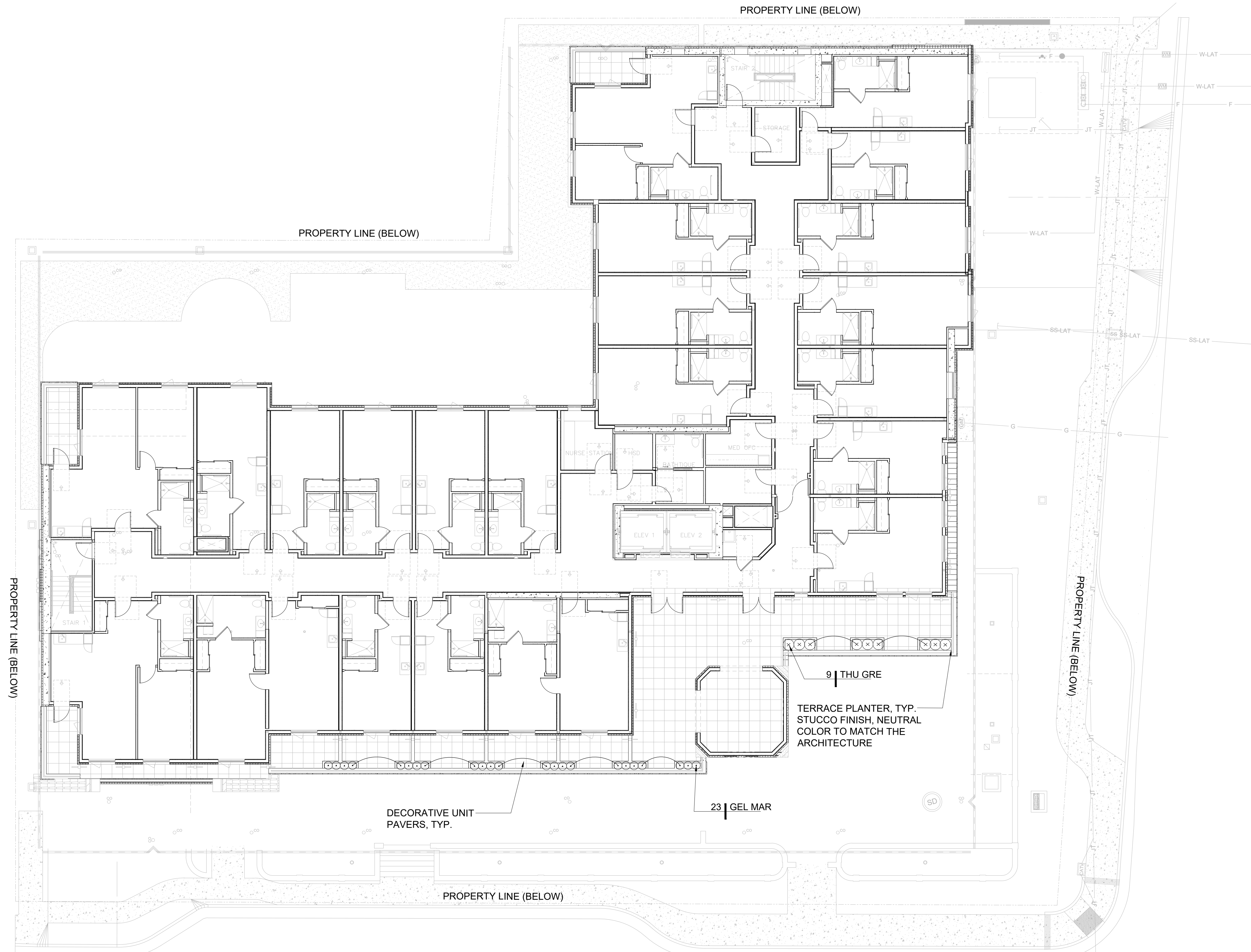
| REVISION | DATE | REASON FOR ISSUE |
|----------|------|------------------|
| | | |
| | | |
| | | |

LEVEL 2
PLANTING PLAN

PLANNING

| | |
|---------------------|--------------------------|
| DATE MAR 3, 2021 | PROJECT NUMBER 174170 |
|---------------------|--------------------------|

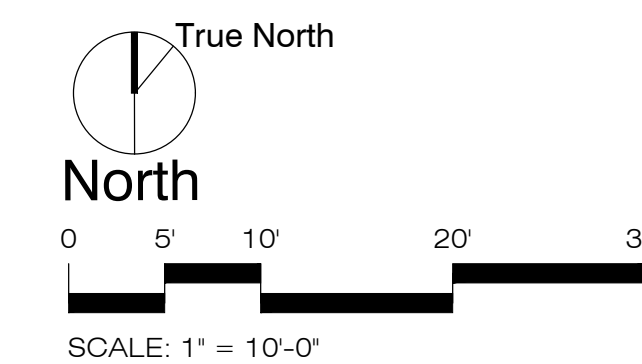
SHEET NUMBER
13



01 LEVEL 5 - PLANTING PLAN

1/8" = 1'-0"

NOTE:
1. SEE SHEET 15 FOR PLANTING SCHEDULE & PLANT IMAGERY.



38 NORTHWEST DAVIS, SUITE 300
PORTLAND, OR 97209
503.245.7100

1505 5TH AVE, SUITE 300
SEATTLE, WA 98101
206.576.1600

1014 HOWARD STREET
SAN FRANCISCO, CA 94103
415.252.7063

© ANKROM MOISAN ARCHITECTS, INC.



Landscape Architecture
232 Sir Francis Drake Blvd.
San Anselmo, CA 94960
Phone: (415) 721-0905
Fax: (415) 721-0910
Email: info@studiogreen.com
www.studiogreen.com

AEGIS SAN RAFAEL
800 MISSION AVENUE SAN RAFAEL CA 94549

ASC SAN RAFAEL LLC

| REVISION | DATE | REASON FOR ISSUE |
|----------|------|------------------|
| | | |
| | | |
| | | |

**LEVEL 5
PLANTING PLAN**

PLANNING

| | |
|---------------------|--------------------------|
| DATE MAR 3, 2021 | PROJECT NUMBER 174170 |
| SHEET NUMBER | |

PLANT MATERIAL SCHEDULE

| ABBREV | BOTANICAL NAME | COMMON NAME | SIZE | SPACING | MATURE SIZE/ PLANT TYPE | WUCOLS RATING |
|---|---------------------------------------|--------------------------------|---------|-----------|----------------------------|---------------|
| TREES | | | | | | |
| ACE APO | ACER SACCHARUM 'APOLLO' | APOLLO MAPLE | 36" BOX | PER PLANS | 30'/ DECIDUOUS | LOW |
| MUS BAS | MUSA BASJOO | JAPANESE BANANA | 24" BOX | 4' O.C. | 12'/ HERBACEOUS | MEDIUM |
| OLE EUR | OLEA EUROPAEA 'SWAN HILL' | FRUITLESS OLIVE - TREE FORM | 36" BOX | PER PLANS | 25'+ / EVERGREEN | VERY LOW |
| PHO DAC | PHOENIX DACTYLIFERA | DATE PALM | 12' BTH | 30' O.C. | 30'+ / EVERGREEN | LOW |
| PIS CHI | PISTACIA CHINENSIS | CHINESE PISTACHE | 36" BOX | PER PLANS | 30'/ DECIDUOUS | LOW |
| SHRUBS, GROUNDCOVERS & VINES | | | | | | |
| BUX GRE | BUXUS M. VAR JAPONICA 'GREEN BEAUTY' | DWARF BOXWOOD | 5 GAL | 1'-0" | 2'/ EVERGREEN | LOW |
| CAR DIV | CAREX DIVULSA | BERKELEY SEDGE | 1 GAL | 1'-8" | 12" / EVERGREEN | VERY LOW |
| DIA REV | DIANELLA REVOLUTA 'LITTLE REV' | LITTLE REV FLAX LILY | 1 GAL | 1'-6" | 18" / EVERGREEN | LOW |
| GEL SEM | GELSEMIUM SEPERVIRENS 'MARGARITA' | CAROLINA JESSIMINE | 1 GAL | PER PLANS | 12" + / EVERGREEN | LOW |
| GER MAC | GERANIUM MACRORRHIZUM | BIG ROOT GERANIUM | 1 GAL | 1'-6" | 8" / SEMI-EVERGREEN | MEDIUM |
| LAM WHI | LAMIUM MACULATUM 'WHITE NANCY' | WHITE NANCY DEADNETTLE | 1 GAL | 1'-6" | 6" / SEMI-EVERGREEN | MEDIUM |
| LIR MUS | LIRIOPE MUSCARI | BLUE LILY TURF | 1 GAL | 1'-0" | 12" / EVERGREEN | MEDIUM |
| LOM BRE | LOMANDRA LONGIFOLIA 'BREEZE' | DWARF MAT RUSH | 1 GAL | 2'-6" | 2' / EVERGREEN | LOW |
| LOM PLA | LOMANDRA LONGIFOLIA 'PLATINUM BEAUTY' | VARIEGATED DWARF MAT RUSH | 1 GAL | 2'-6" | 2' / EVERGREEN | LOW |
| LON JAP | LONICERA JAPONICA | JAPANESE HONEYSUCKLE | 1 GAL | 3'-0" | 2' / EVERGREEN | MEDIUM |
| LOR CHI | LOROPETALUM CHINENSE | FRINGE FLOWER | 5 GAL | 4'-6" | 3'-6' / EVERGREEN | LOW |
| PHI XAN | PHILODENDRON XANADU | PHILODENDRON | 5 GAL | 3'-0" | 2' / EVERGREEN | MEDIUM |
| RHA CAL | RHAMNUS CALIFORNICA | COFFEEBERRY | 5 GAL | PER PLANS | 6'-8' / EVERGREEN | LOW |
| ROS SPP | ROSA SPECIES CARPET ROSE | GROUNDCOVER CARPET ROSE 'PINK' | 1 GAL | 3'-0" | 18" TO 2' / SEMI-EVERGREEN | LOW |
| STR REG | STRELITZIA REGINAE | BIRD OF PARADISE | 5 GAL | 4' | 4' TO 6' / EVEGREEN | LOW |
| THU GRE | THUNBERGIA GREGORII | ORANGE CLOCK VINE | 1 GAL | 2'-0" | 8'+/ EVERGREEN | LOW |
| BIOFILTRATION PLANTS | | | | | | |
| ACE CIR | ACER CIRCINATUM | VINE MAPLE | 15 GAL | PER PLANS | 10'+ / DECIDUOUS | LOW |
| ACH MIL | ACHILLEA MILLEFOLIUM | COMMON YARROW | 1 GAL | 2'-0" | 1'-6" / PERENNIAL | LOW |
| CAR DIV | CAREX DIVULSA | BERKELEY SEDGE | 1 GAL | 1'-6" | 12" / EVERGREEN | LOW |
| CHO TEC | CHONDROPETALUM TECTORUM | SMALL CAPE RUSH | 1 GAL | 2'-0" | 2' / EVERGREEN | LOW |
| IRI DOU | IRIS DOUGLASIANA | DOUGLAS IRIS | 1 GAL | 2'-0" | 2' / EVERGREEN | LOW |
| LOB CAR | LOBELIA CARDINALIS | CARDINAL FLOWER | 1 GAL | 2'-0" | 3' / PERENNIAL | LOW |
| RHA CAL | RHAMNUS CALIFORNICA | COFFEEBERRY | 5 GAL | PER PLANS | 6'-8' / EVERGREEN | LOW |

NOTE: PLANTER MATERIAL IN THE LEVEL 2 INDIVIDUAL PLANTER POTS WILL BE SEASONAL AND CONSIST MAINLY OF FLOWERING PLANTS. THIS PLANTING AREA HAS BEEN ADDED TO THE IRRIGATION AND IS PART OF THE WATER USE CALCS.

PLANT MATERIAL IMAGERY TREES



ACER SACCHARUM 'APOLLO'



MUSA BASJOO



OLEA EUROPAEA 'SWAN HILL'



PHOENIX DACTYLIFERA



PISTACIA CHINENSIS (Street Trees)

SHRUBS, GROUNDCOVERS & VINES



BUXUS M. VAR JAPONICA 'GREEN BEAUTY'



CAREX DIVULSA



DIANELLA REVOLUTA 'LITTLE REV'



GELSEMIUM SEMPERVIRENS 'MARGARITA'



GERANIUM MACRORRHIZUM



LAMIUM MACULATUM 'WHITE NANCY'



LIRIOPE MUSCARI



LOMANDRA LONGIFOLIA 'BREEZE'



LOMANDRA LONGIFOLIA 'PLATINUM BEAUTY'



LONICERA JAPONICA



LOROPETALUM CHINENSE



PHILODENDRON XANADU



RHAMNUS CALIFORNICA



ROSA SPECIES

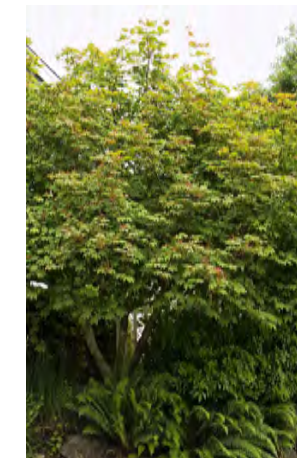


STRELITZIA REGINAE



THUNBERGIA GREGORII

BIOFILTRATION PLANTS



ACER CIRCINATUM



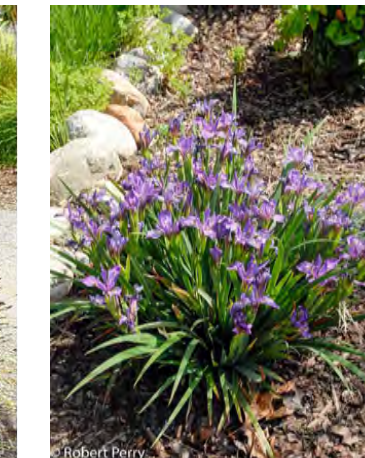
ACHILLEA MILLEFOLIUM



CAREX DIVULSA



CHONDROPETALUM TECTORUM



IRIS DOUGLASIANA



LOBELIA CARDINALIS



RHAMNUS CALIFORNICA



38 NORTHWEST DAVIS, SUITE 300
PORTLAND, OR 97209
503.245.7100

1505 5TH AVE., SUITE 300
SEATTLE, WA 98101
206.576.1600

1014 HOWARD STREET
SAN FRANCISCO, CA 94103
415.252.7063

© ANKROM MOISAN ARCHITECTS, INC.



Landscape Architecture
232 Sir Francis Drake Blvd.
San Anselmo, CA 94960
Phone: (415) 721-0905
Fax: (415) 721-0910
Email: info@studiogreen.com
www.studiogreen.com

AEGIS SAN RAFAEL
800 MISSION AVENUE SAN RAFAEL CA 94549

ASC SAN RAFAEL LLC

| REVISION | DATE | REASON FOR ISSUE |
|----------|------|------------------|
| | | |
| | | |
| | | |

PLANT MATERIAL SCHEDULE & IMAGERY

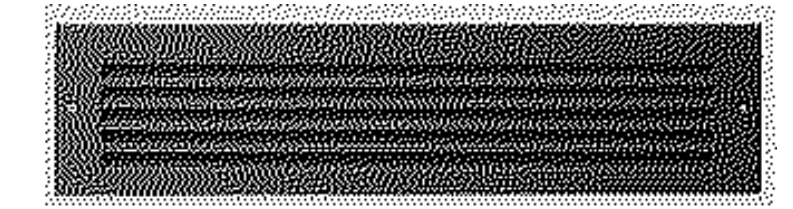
PLANNING

DATE: MAR 3, 2021 PROJECT NUMBER: 174170

SHEET NUMBER



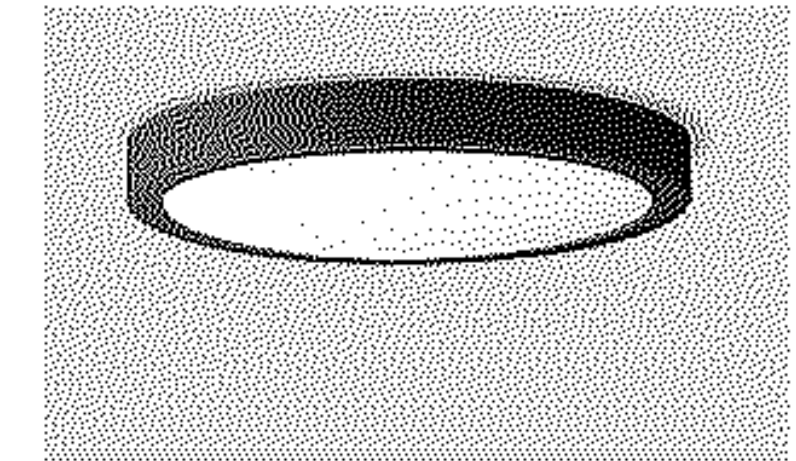
SP1, SP2
 30" AND 19" TALL DECORATIVE POLE-TOP LUMINAIRES WITH LED CANDELABRA BASE LAMPS IN WARM WHITE COLOR TEMPERATURE(2700K) AT MAIN ENTRY AND DRIVE ENTRY TO COVERED PARKING



SS1
 RECESSED STEPLIGHT AT PATHWAYS



SW1, SW2
 19" AND 30" TALL DECORATIVE WALL SCNCES WITH LED CANDELABRA BASE LAMPS IN WARM WHITE COLOR TEMPERATURE(2700K)



SF1
 CEILING MOUNTED LIGHTING FOR COVERED PARKING AREA



SW3
 WALL PACK FOR SECURITY AND EGRESS LIGHTING AT BUILDING EXITS

1 SITE PLAN - LIGHTING
 SCALE: 1" = 10'-0"

NOT FOR CONSTRUCTION



38 NORTHWEST DAVIS, SUITE 300
 PORTLAND, OR 97209
 503.245.7100
 1505 5TH AVE, SUITE 300
 SEATTLE, WA 98101
 206.576.1600
 1014 HOWARD STREET
 SAN FRANCISCO, CA 94103
 415.252.7063

© ANKROM MOISAN ARCHITECTS, INC.

GLUMAC
 engineers for a sustainable future

1601 Fifth Ave., Suite 2210
 Seattle, WA 98101
 www.glumac.com
 T: 206.262.1010 F: 206.262.9865
 Project Manager: Adam Leung
 Job No.: 05-19-00126

AGIS SAN RAFAEL
 800 MISSION AVENUE SAN RAFAEL CA 94901

ASC SAN RAFAEL LLC

| REVISION | DATE | REASON FOR ISSUE |
|----------|------|------------------|
| | | |
| | | |

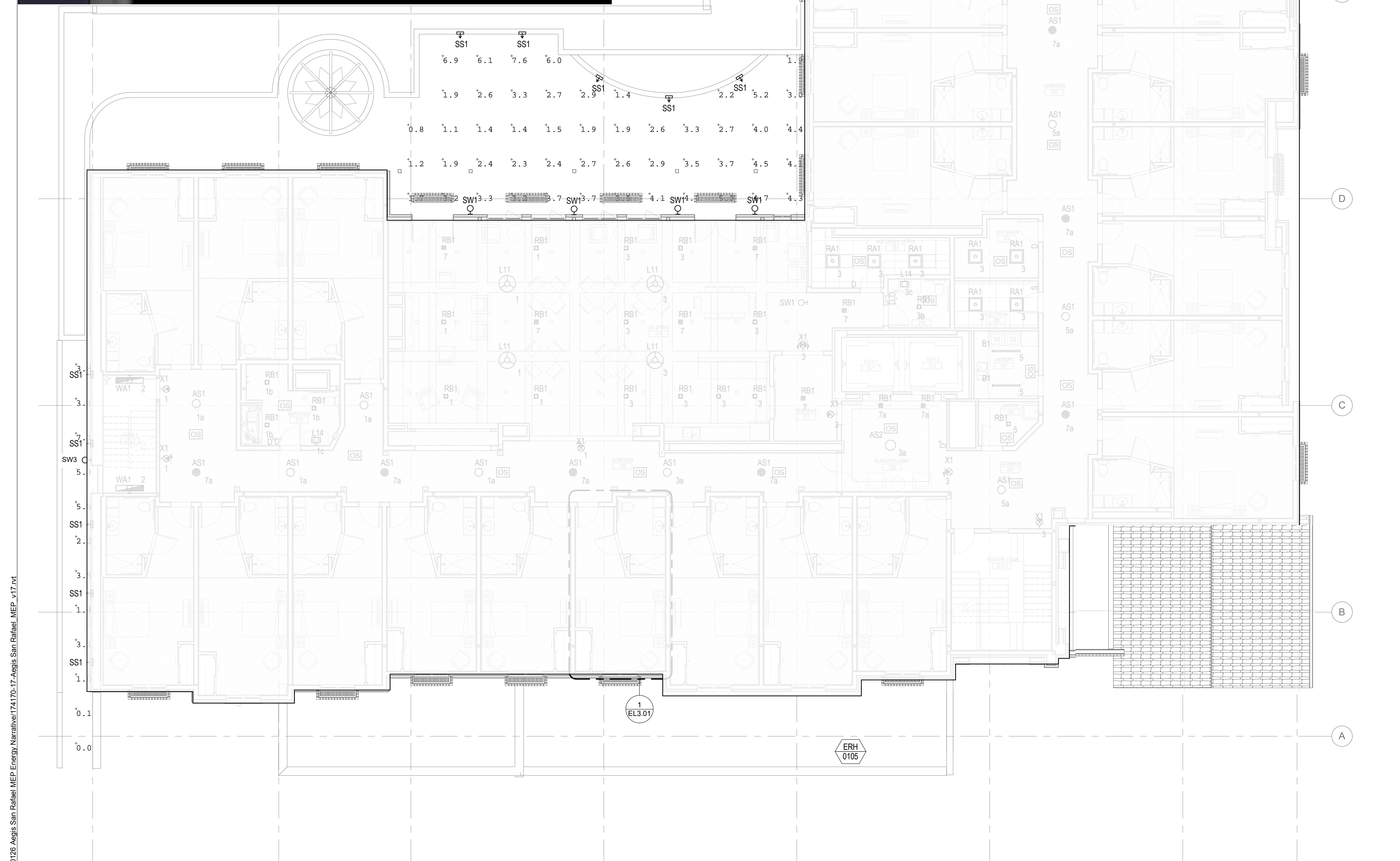
SITE PLAN - LIGHTING

PLANNING

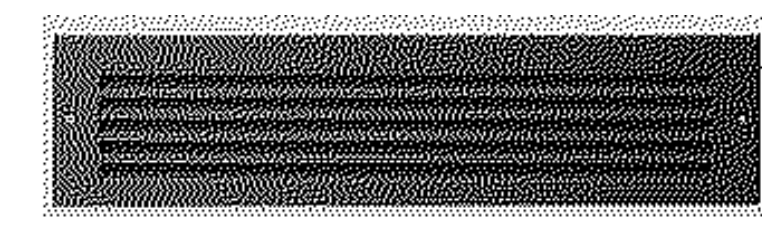
DATE: JULY 9, 2021 PROJECT NUMBER: 174170

SHEET NUMBER

BIM 360/005.19.00126 Aegis San Rafael MEP Narrative/174170-17-Aegis San Rafael MEP_v17.rvt



SW4
TRELIS-MOUNT DOWNLIGHT
SCONCE



SS1
RECESSED STEPLIGHT



SW1
19" TALL DECORATIVE WALL
SCONCES WITH LED
CANDELABRA BASE LAMPS IN
WARM WHITE COLOR
TEMPERATURE(2700K)

**NOT FOR
CONSTRUCTION**



38 NORTHWEST DAVIS, SUITE 300
PORTLAND, OR 97209
503.245.7100

1505 5TH AVE, SUITE 300
SEATTLE, WA 98101
206.576.1600

1014 HOWARD STREET
SAN FRANCISCO, CA 94103
415.252.7063

© ANKROM MOISAN ARCHITECTS, INC.

GLUMAC
engineers for a sustainable future

1601 Fifth Ave., Suite 2210
Seattle, WA 98101
www.glumac.com
T: 206.262.1010 F: 206.262.9865
Project Manager: Adam Leingang
Job No.: 05.19.00126

ATEGIS SAN RAFAEL
800 MISSION AVENUE SAN RAFAEL CA 94901

ASC SAN RAFAEL LLC

| REVISION | DATE | REASON FOR ISSUE |
|----------|------|------------------|
| | | |
| | | |

**LEVEL 2 FLOOR
PLAN - LIGHTING
PLAN**

PLANNING

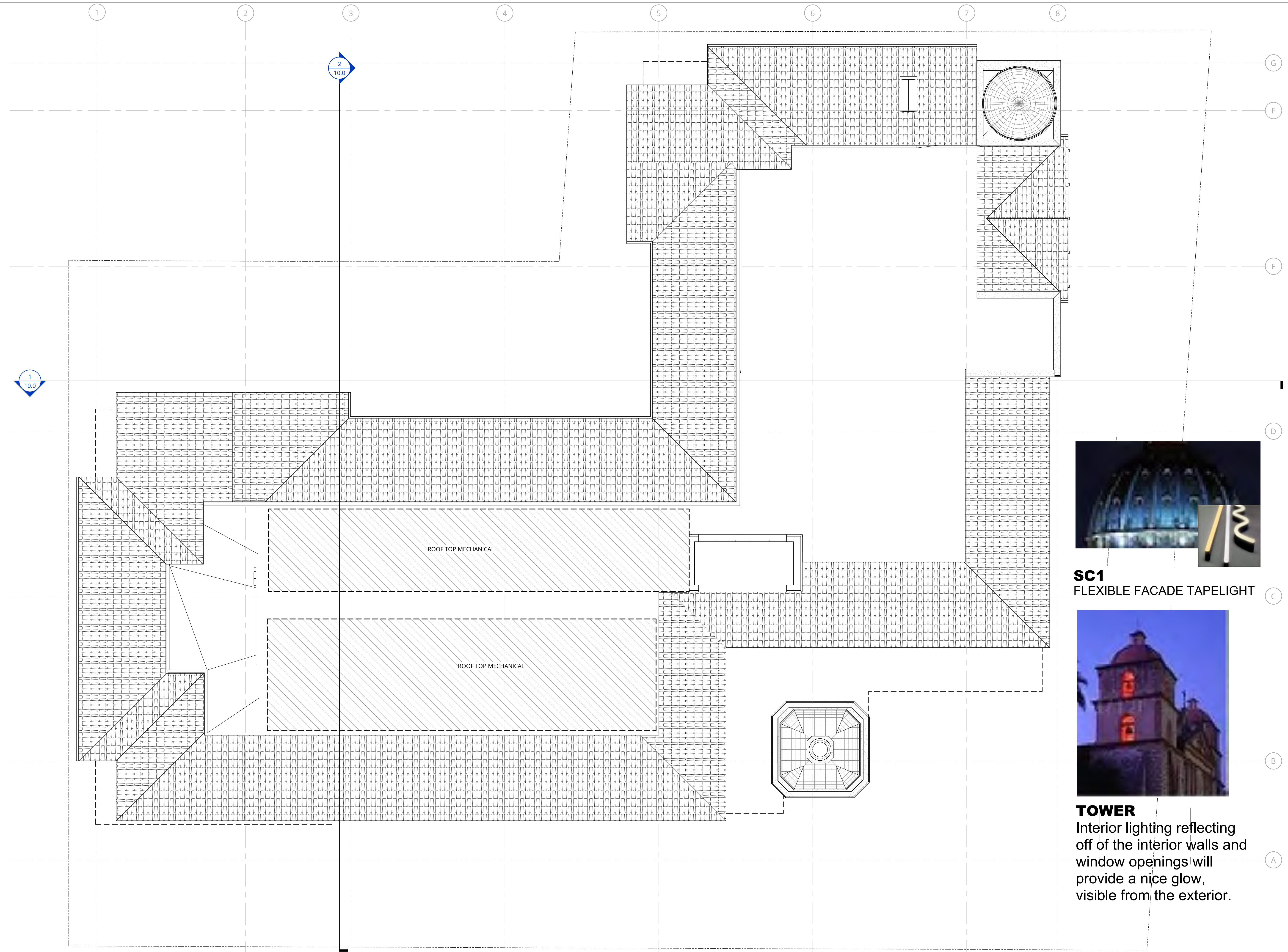
DATE **JULY 9, 2021** PROJECT NUMBER **174170**

SHEET NUMBER **18**



1 LEVEL 2 - FLOOR PLAN - LIGHTING
SCALE: 1/8" = 1'-0"

BIM 360/05.19.00126 Aegis San Rafael MEP Narrative/174170-17-Aegis San Rafael MEP_v17.rvt



SC1
FLEXIBLE FACADE TAPELIGHT



TOWER
Interior lighting reflecting off of the interior walls and window openings will provide a nice glow, visible from the exterior.

NOT FOR CONSTRUCTION



38 NORTHWEST DAVIS, SUITE 300
PORTLAND, OR 97209
503.245.7100

1505 5TH AVE, SUITE 300
SEATTLE, WA 98101
206.576.1600

1014 HOWARD STREET
SAN FRANCISCO, CA 94103
415.252.7063

© ANKROM MOISAN ARCHITECTS, INC.

GLUMAC

engineers for a sustainable future

1601 Fifth Ave., Suite 2210
Seattle, WA 98101
www.glumac.com
T. 206.262.1010 F. 206.262.9865
Project Manager: Adam Leingang
Job No.: 05.19.00126

AEGIS SAN RAFAEL
800 MISSION AVENUE SAN RAFAEL CA 94901

ASC SAN RAFAEL LLC

| REVISION | DATE | REASON FOR ISSUE |
|----------|------|------------------|
| | | |
| | | |
| | | |

OVERALL ROOF PLAN - LIGHTING PLAN

PLANNING

| | |
|----------------------|--------------------------|
| DATE JULY 9, 2021 | PROJECT NUMBER 174170 |
|----------------------|--------------------------|

SHEET NUMBER

19

1 ROOF - FLOOR PLAN - LIGHTING

SCALE: 1/8" = 1'-0"

