

PERKINS — EASTMAN

September 9, 2021

Jayni Allsep
 Planning Consultant
 City of San Rafael

Project Name: Aldersly Retirement Community
 Project Number: 70762.00.0
 Subject: Planning Submittal Elevation Revision Narrative

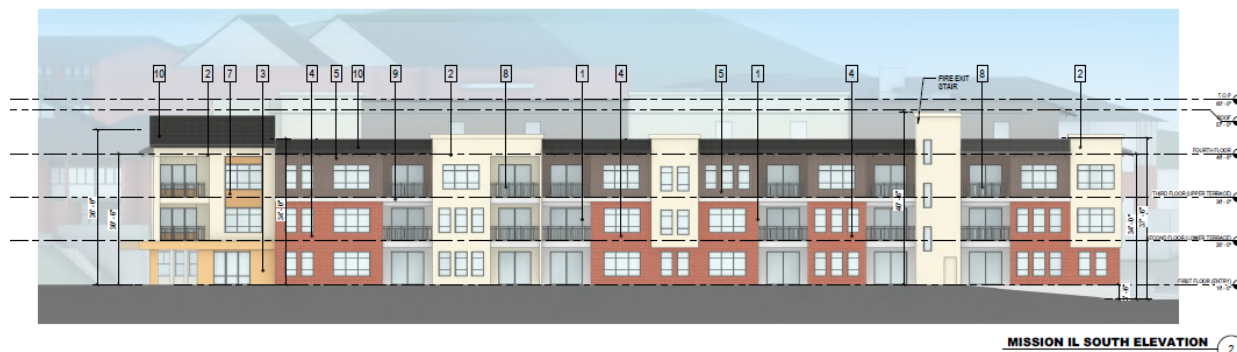
Dear Ms. Allsep,

Following changes have been implemented in the latest elevation development in response to our last conversation during the Concept Design Submittal.

- Massing of the building is consistent with the designed presented at Concept Design submittal.
- Buildings material was coordinated with the existing campus to utilize material that is consistent with the existing campus, which includes brick, fiber cement panels (in lieu of wood), fiber cement siding and stucco. See Elevations on A5.1 and A5.2.



Revised Renovation (1/2021)



Concept Design Submittal Elevation (5/2020)

PERKINS — EASTMAN

- Window style was coordinated to be consistent with the elements from the main campus including mullion locations, color, and the panels around the windows. See A5.0 for existing campus character)
- Top floor of the building is set back to help minimize the massing on Mission Avenue. See drawing 2/A5.1
- The entry design on east and west ends of the building evoke Danish/Scandinavian Architecture to celebrate the Danish heritage of the community.
- Vertical elements on the south end of the elevation break the length of the roofline.