

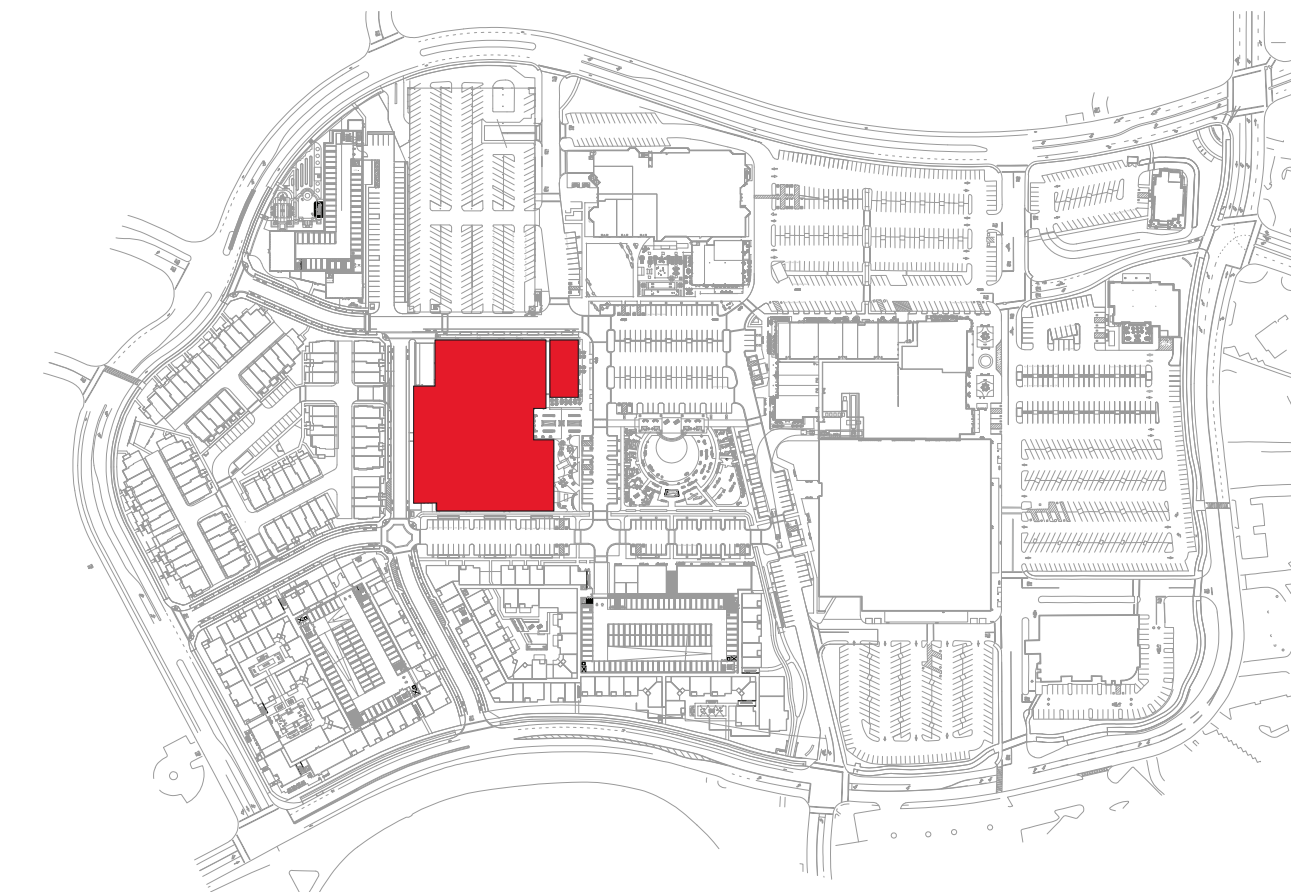
BUILDING SUMMARY

CINEMA
1-STORY BUILDING
ASSEMBLY GROUP A-1 - MOTION PICTURE THEATER USE
CONSTRUCTION TYPE - IIIA FULLY SPRINKLERED
SHOPS 3
1-STORY BUILDING
MERCANTILE GROUP M - RETAIL USE
CONSTRUCTION TYPE - VB FULLY SPRINKLERED

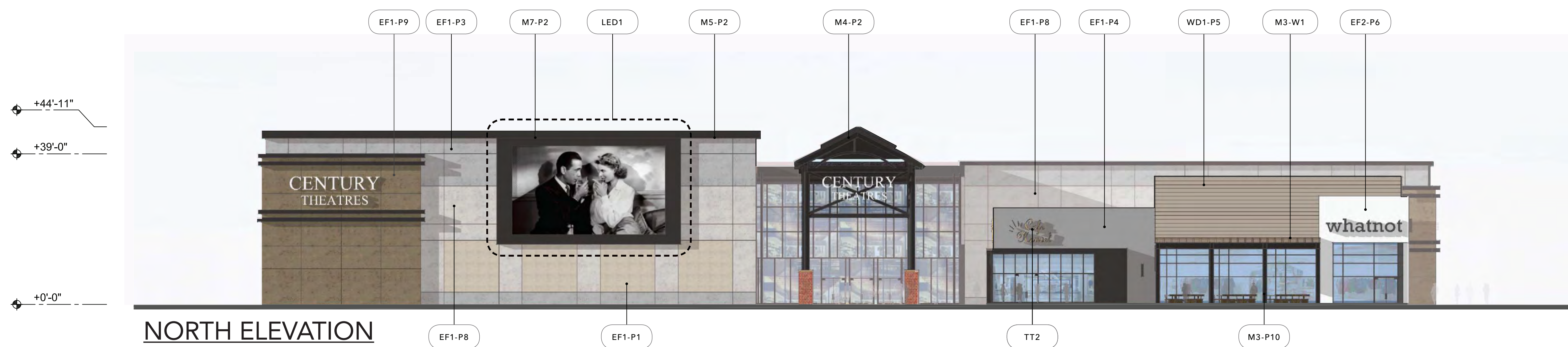
LEGEND

SHOPS	[Yellow Box]
PAD	[Orange Box]
MAJOR	[Red Box]
GYM	[Brown Box]
CINEMA	[Purple Box]
STRUCTURED PARKING	[Grey Box]
SERVICE	[White Box]

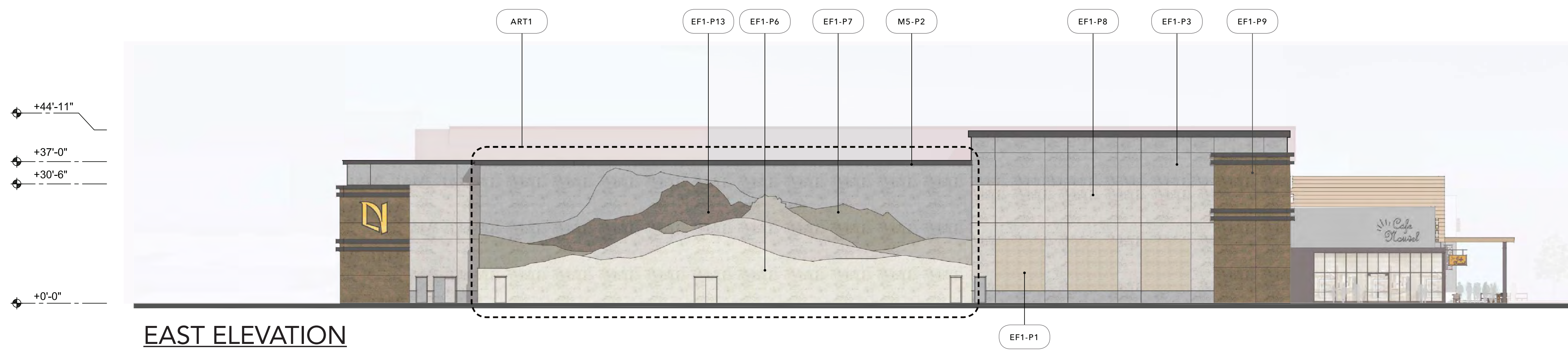




KEY PLAN



NORTH ELEVATION



EAST ELEVATION



SOUTH ELEVATION



WEST ELEVATION

MATERIAL

- BR1 Thin Brick
- BR2 Face Brick, Roman
- CT1 Ceramic / Porcelain Tile
- CM1 CMU, Smooth Finish, Painted
- CM2 CMU with Skim Coat Stucco (*)
- CN1 Concrete Base (GFRG)
- EF1 Stucco - Textured Finish (*)
- EF2 Stucco - Smooth Finish (*)
- GL1 Glazing, Translucent
- M1 Decorative Steel Frame
- M2 Aluminum Infill Panel
- M3 Steel Trellis
- M4 Steel Entry Canopy
- M5 Metal Fascia and Coping
- M6 Steel Structure
- M7 Aluminum Break Metal
- M8 Decorative Laser Cut Metal Panel
- M9 Aluminum Composite Metal Panel
- M10 Corrugated Metal
- WD1 Wood - Lap Siding (**)
- WD2 Wood - Board and Batten Siding (**)
- WD3 Wood - Rustic Barnwood (***)
- WD4 Wood - Vertical Siding (**)

COLOR (DESIGN INTENT)

- NA No Additional Finish
- B1 Red & Brick Orange Mix
- B2 Dark Gray Mix
- B3 Brown & Gray Mix
- B4 Tan & Brown Mix
- CC1 Natural Gray Finish
- CC2 Board-form Cast, Dark Tan
- M1 Dark Brown Metal
- M2 Cool White Metal
- P1 Light Tan
- P2 Dark Black-Brown 01
- P3 Medium Warm Gray 01
- P4 Light Warm Gray
- P5 Medium Warm Gray 02
- P6 White
- P7 Medium Tan
- P8 Cream White
- P9 Medium Taupe
- P10 Dark Black-Brown 02
- P11 Dark Gray-Black
- P12 Dark Cool Gray
- P13 Dark Warm Gray
- P14 Red
- P15 Light Cool Gray

MISCELLANEOUS ITEMS

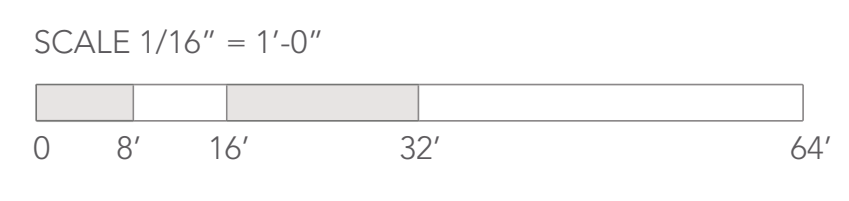
- ART1 Mural or Artwork, TBD
- EGP Environmental Graphic Panel
- FAB1 Fabric awning
- LT1 Decorative Light Fixture
- LT2 Decorative Light Sconce
- LP1 Landscape Planter and Green Screen
- LED1 LED Screen by others
- PV1 Photovoltaic Solar Panels
- TT1 Tenant storefront infill by others
- TT2 Tenant signage by others

NOTES

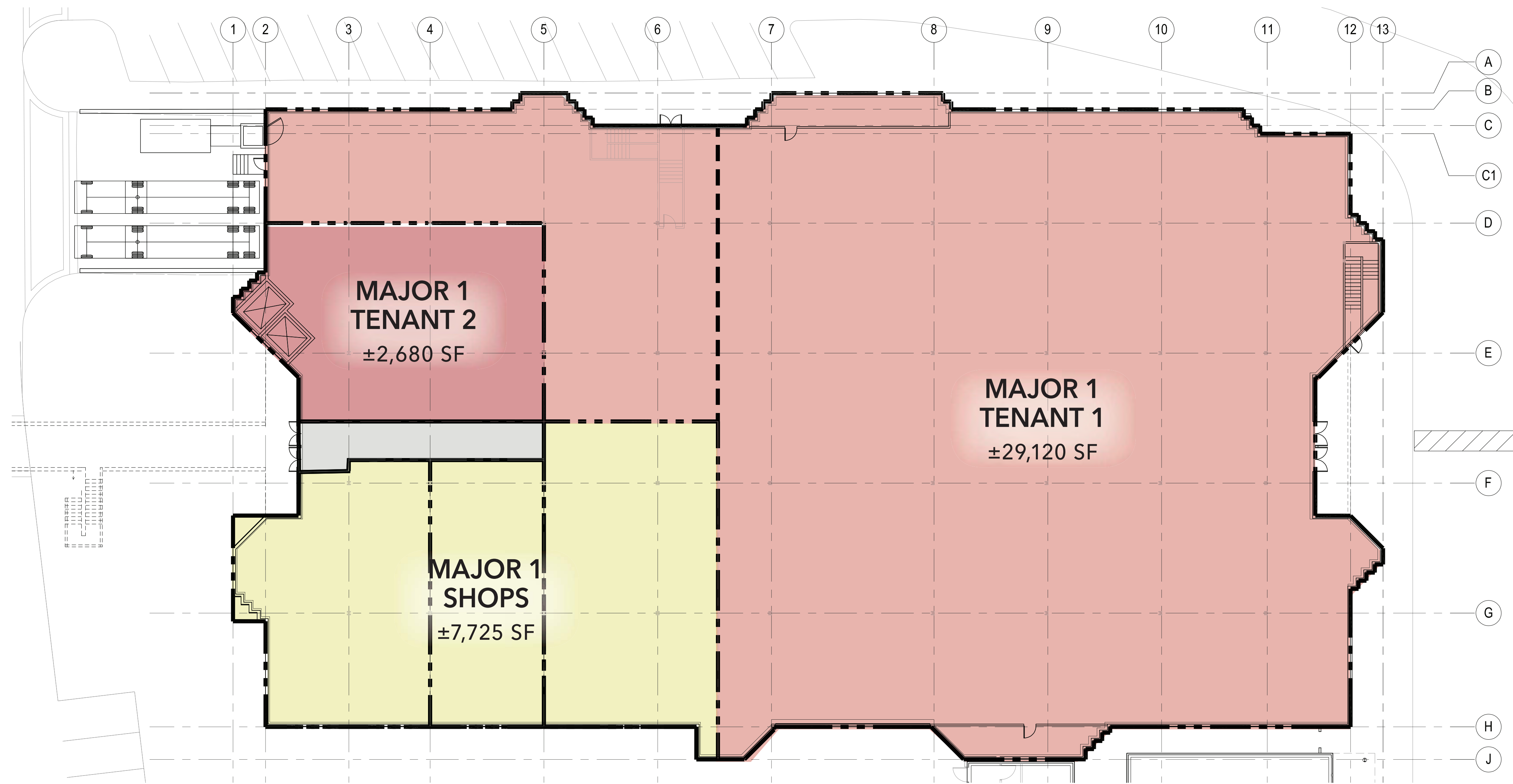
- (*) Elastomeric Coating
- (**) Wood-like Fiber-cement Board
- (***) Wood-like Interlocking Wall Panels
- (****) Aesthetic Intent Only

EXISTING TO REMAIN

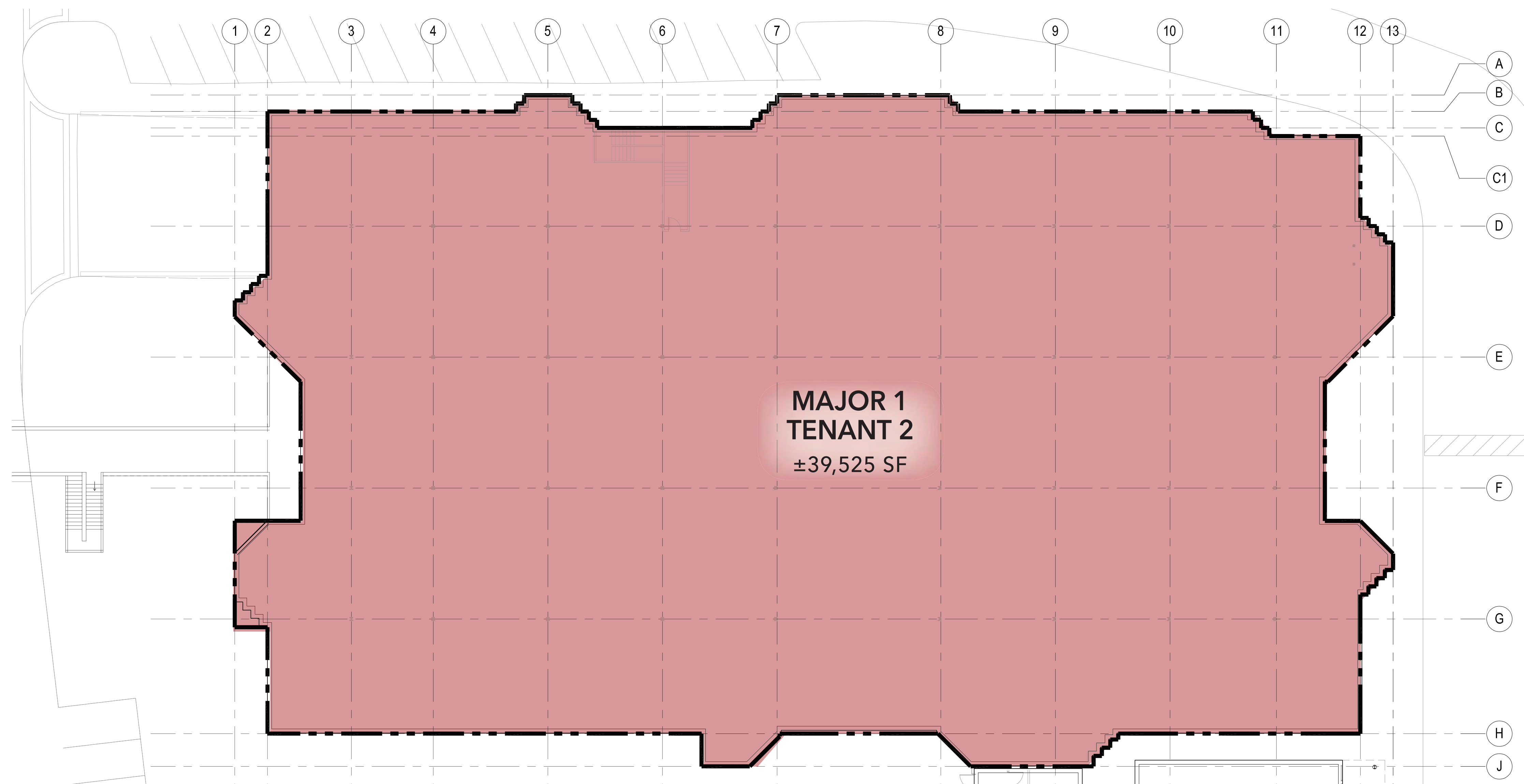
- XBR1 Existing Brick to remain
- XM1 Existing Steel Trellis to remain
- XCT1 Existing Tile to remain
- XCM1 Existing CMU to remain
- XRF1 Existing Roof to remain
- XEF1 Existing Stucco to remain



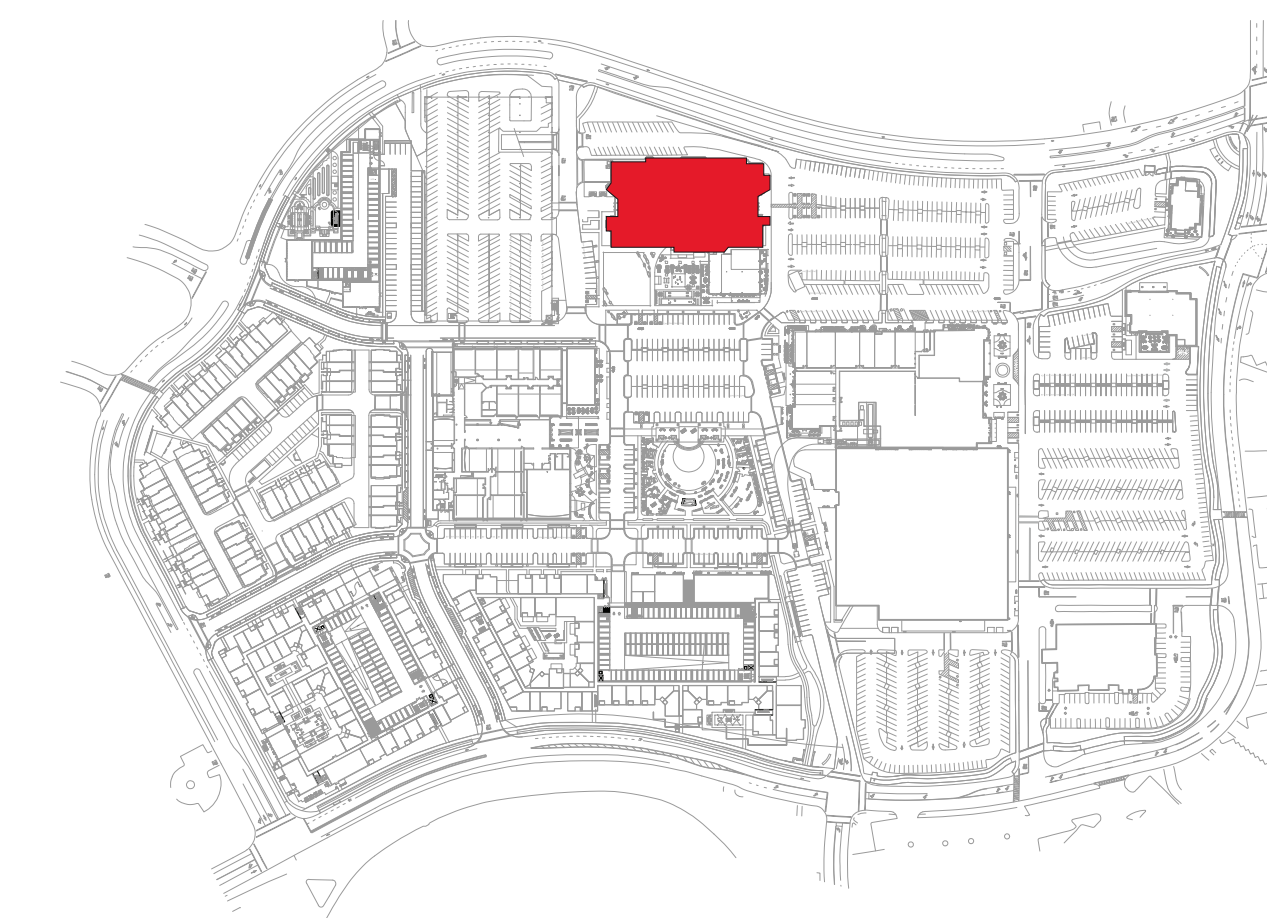
2025 MASTER PLAN - CINEMA / SHOPS 3 ELEVATIONS



GROUND LEVEL



UPPER LEVEL



KEY PLAN

LEGEND

- SHOPS
- PAD
- MAJOR
- GYM
- CINEMA
- STRUCTURED PARKING
- SERVICE

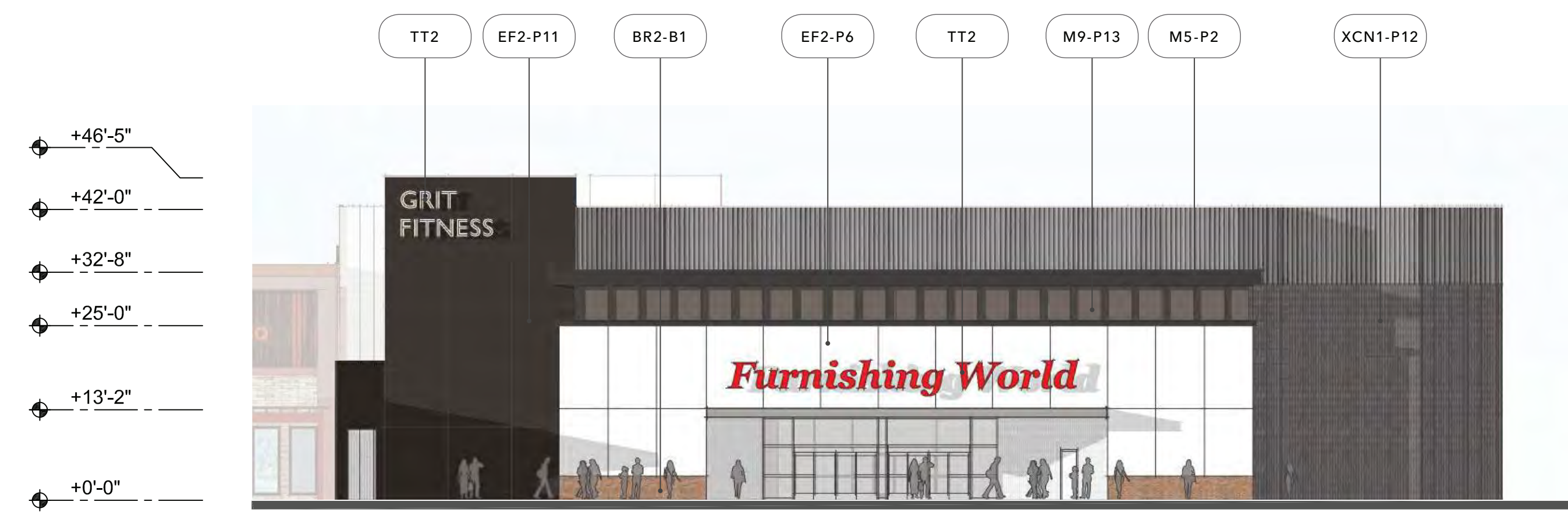
BUILDING SUMMARY

MAJOR 1
 2-STORY BUILDING
 GROUND FLOOR - MERCANTILE GROUP M - RETAIL USE
 UPPER LEVEL - ASSEMBLY GROUP A3 - GYMNASIUM
 CONSTRUCTION TYPE - IIIA FULLY SPRINKLERED

SCALE 1/16" = 1'-0"
 0 8' 16' 32' 64'



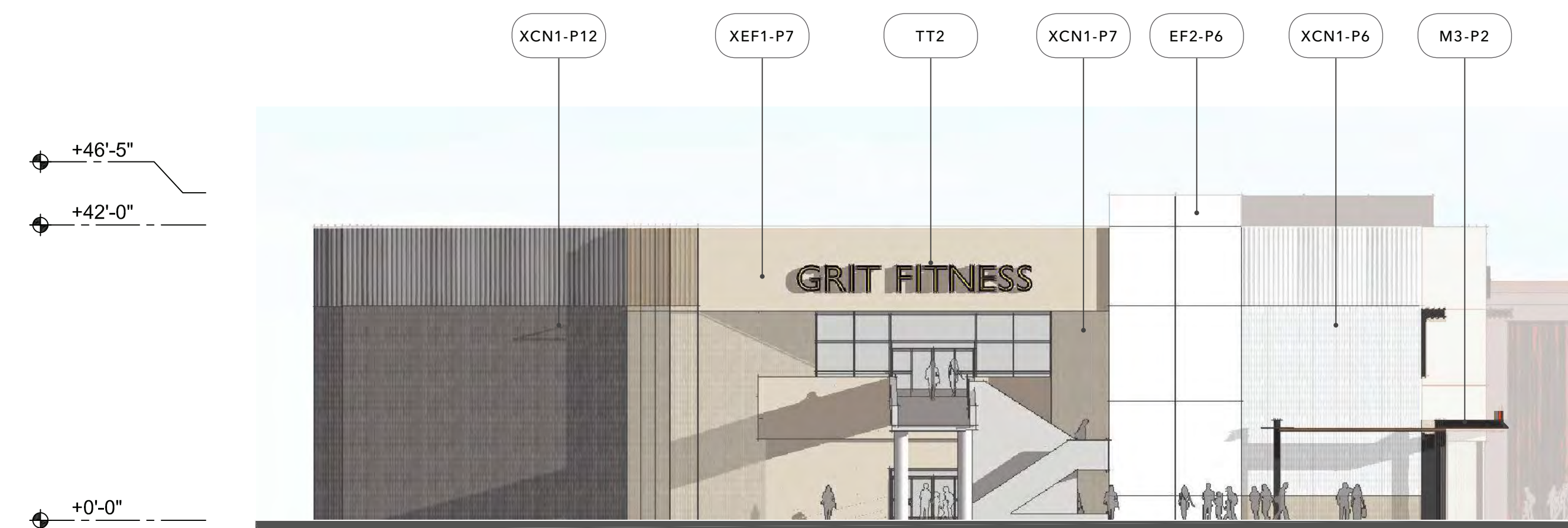
2025 MASTER PLAN - MAJOR 1 (Existing Kohl's) FLOOR PLAN



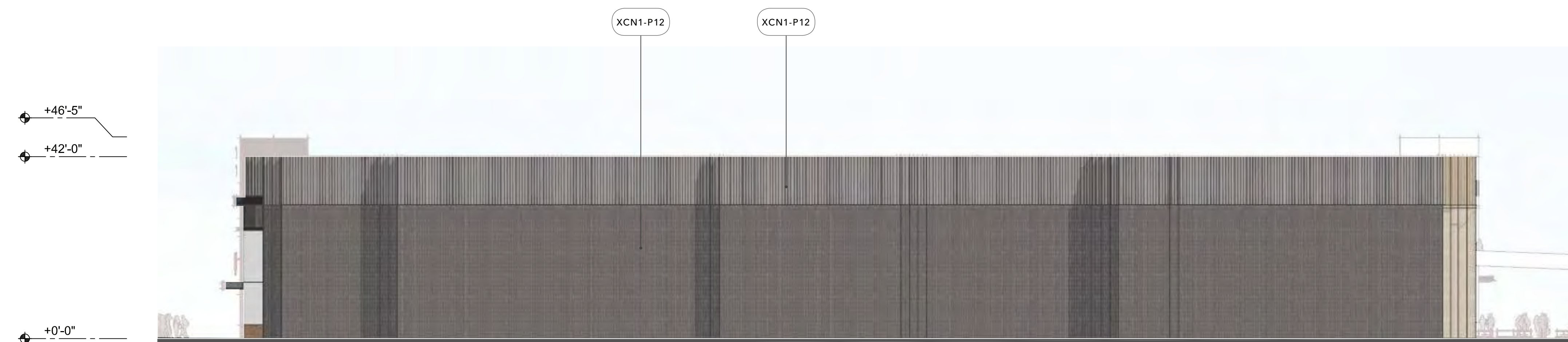
NORTH ELEVATION



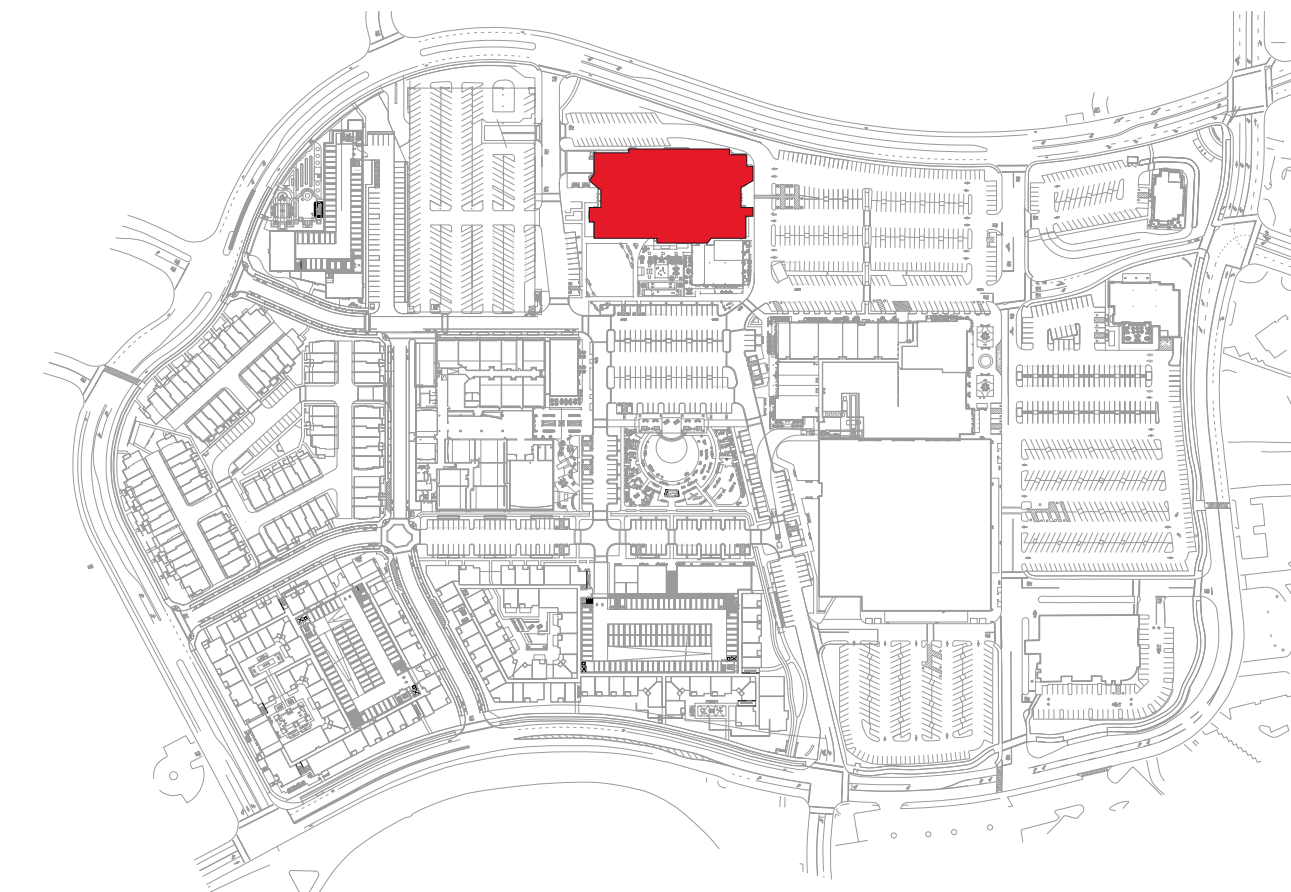
EAST ELEVATION



SOUTH ELEVATION



WEST ELEVATION



KEY PLAN

MATERIAL

- BR1 Thin Brick
- BR2 Face Brick, Roman
- CT1 Ceramic / Porcelain Tile
- CM1 CMU, Smooth Finish, Painted
- CM2 CMU with Skim Coat Stucco (*)
- CN1 Concrete Base (GFR)
- EF1 Stucco - Textured Finish (*)
- EF2 Stucco - Smooth Finish (*)
- GL1 Glazing, Translucent
- M1 Decorative Steel Frame
- M2 Aluminum Infill Panel
- M3 Steel Trellis
- M4 Steel Entry Canopy
- M5 Metal Fascia and Coping
- M6 Steel Structure
- M7 Aluminum Break Metal
- M8 Decorative Laser Cut Metal Panel
- M9 Aluminum Composite Metal Panel
- M10 Corrugated Metal
- WD1 Wood - Lap Siding (**)
- WD2 Wood - Board and Batten Siding (**)
- WD3 Wood - Rustic Barnwood (***)
- WD4 Wood - Vertical Siding (**)

MISCELLANEOUS ITEMS

- ART1 Mural or Artwork, TBD
- EGP Environmental Graphic Panel
- FAB1 Fabric awning
- LT1 Decorative Light Fixture
- LT2 Decorative Light Sconce
- LP1 Landscape Planter and Green Screen
- LED1 LED Screen by others
- PV1 Photovoltaic Solar Panels
- TT1 Tenant storefront infill by others
- TT2 Tenant signage by others

COLOR (DESIGN INTENT)

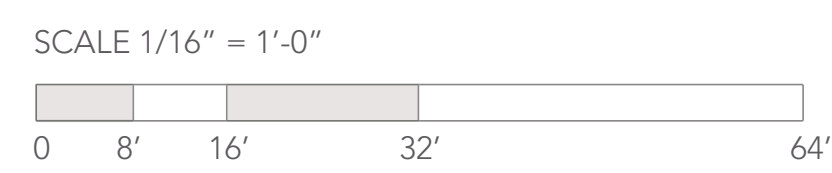
- NA No Additional Finish
- B1 Red & Brick Orange Mix
- B2 Dark Gray Mix
- B3 Brown & Gray Mix
- B4 Tan & Brown Mix
- CC1 Natural Gray Finish
- CC2 Board-form Cast, Dark Tan
- M1 Dark Brown Metal
- M2 Cool White Metal
- P1 Light Tan
- P2 Dark Black-Brown 01
- P3 Medium Warm Gray 01
- P4 Light Warm Gray
- P5 Medium Warm Gray 02
- P6 White
- P7 Medium Tan
- P8 Cream White
- P9 Medium Taupe
- P10 Dark Black-Brown 02
- P11 Dark Gray-Black
- P12 Dark Cool Gray
- P13 Dark Warm Gray
- P14 Red
- P15 Light Cool Gray
- T1 White
- T2 Wood-like Pattern
- VAR VARIES
- W1 Walnut Brown (****)
- W2 White Oak (****)
- W3 Cedar Brown (****)

NOTES

- (*) Elastomeric Coating
- (**) Wood-like Fiber-cement Board
- (***) Wood-like Interlocking Wall Panels
- (****) Aesthetic Intent Only

EXISTING TO REMAIN

- XBR1 Existing Brick to remain
- XM1 Existing Steel Trellis to remain
- XCT1 Existing Tile to remain
- XCM1 Existing CMU to remain
- XRF1 Existing Roof to remain
- XEF1 Existing Stucco to remain



2025 MASTER PLAN - MAJOR 1 (Existing Kohl's) ELEVATIONS

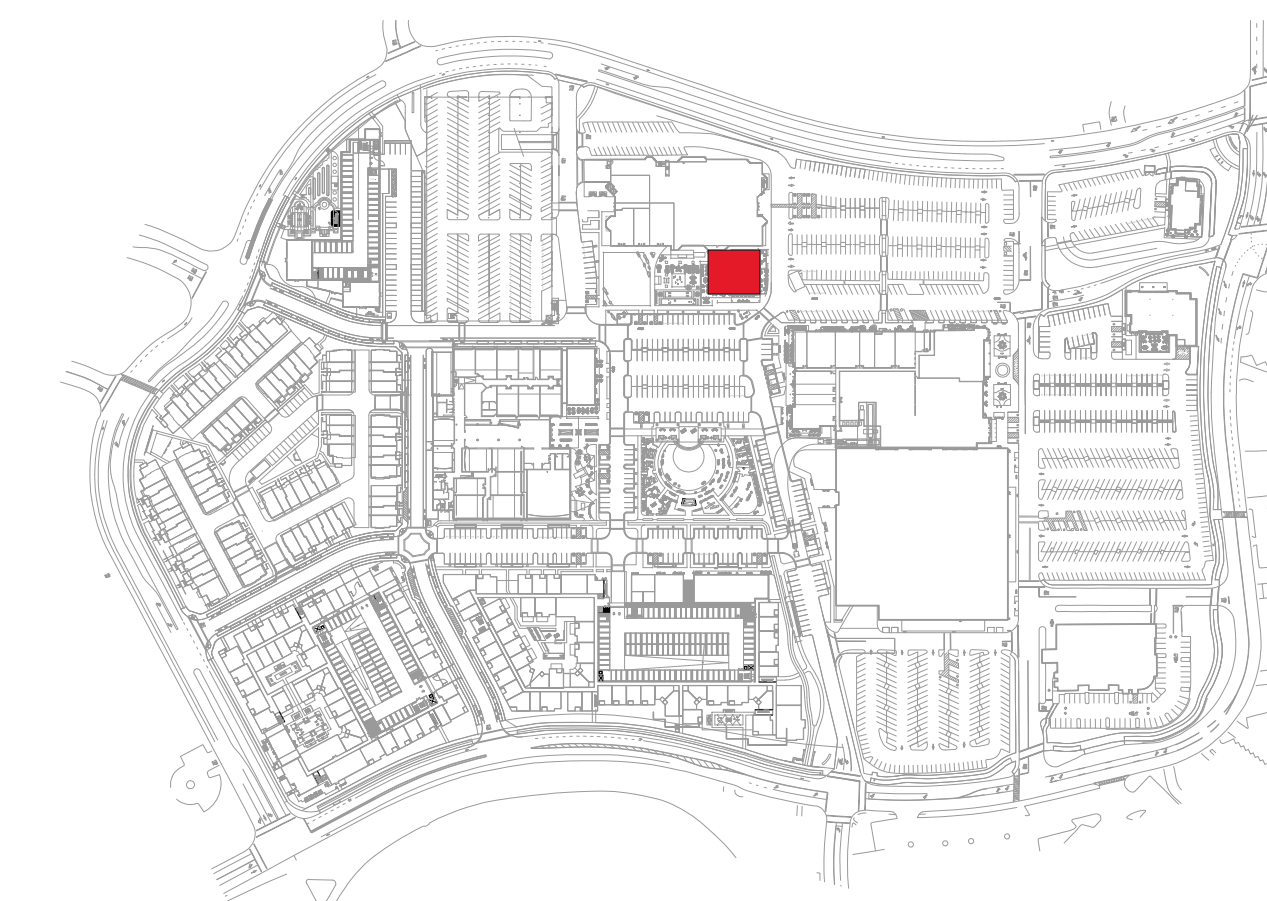
NORTHGATE TOWN SQUARE

REDEVELOPMENT PLAN

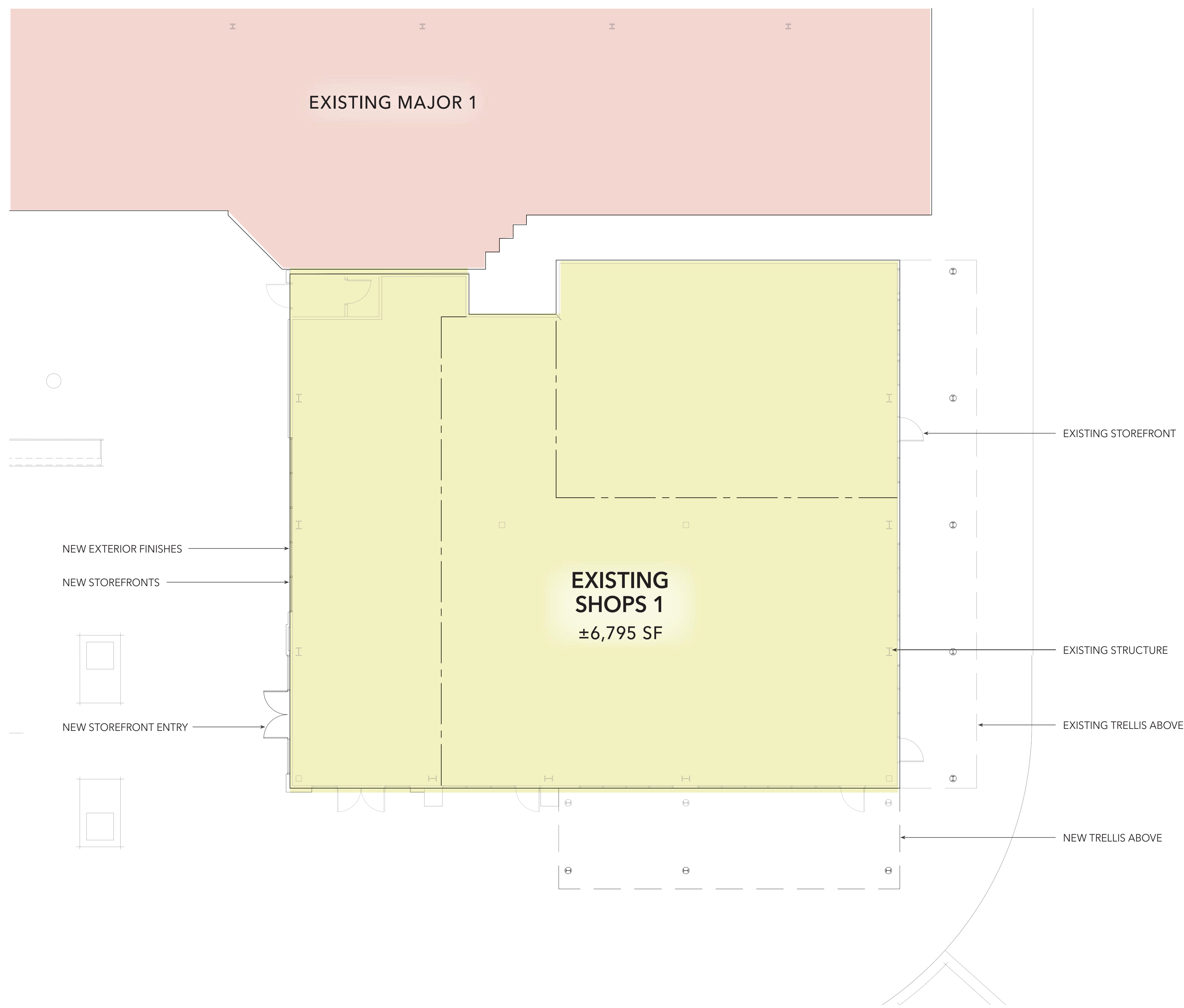
MARCH 09, 2022



RT-4



KEY PLAN



LEGEND

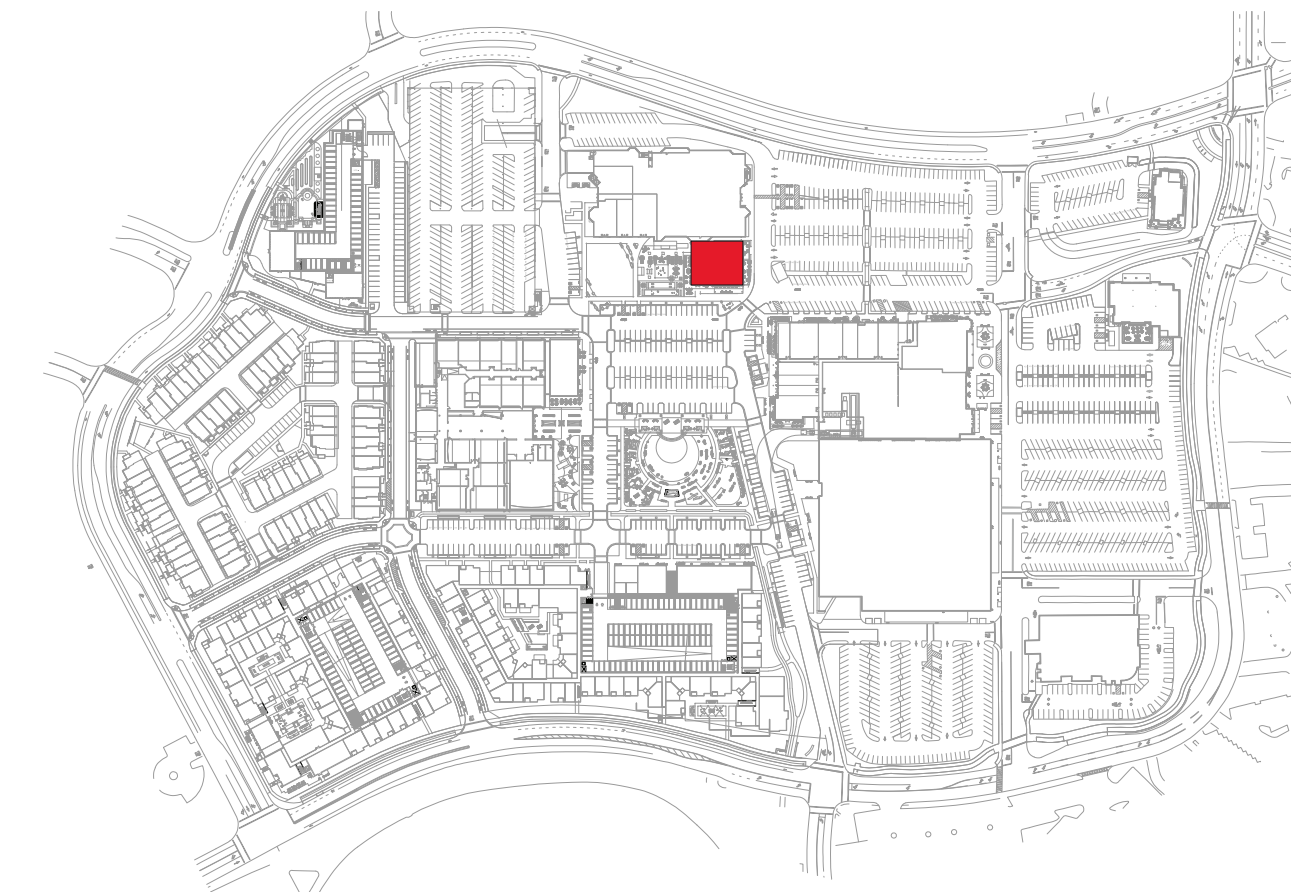
- SHOPS
- PAD
- MAJOR
- GYM
- CINEMA
- STRUCTURED PARKING
- SERVICE

BUILDING SUMMARY

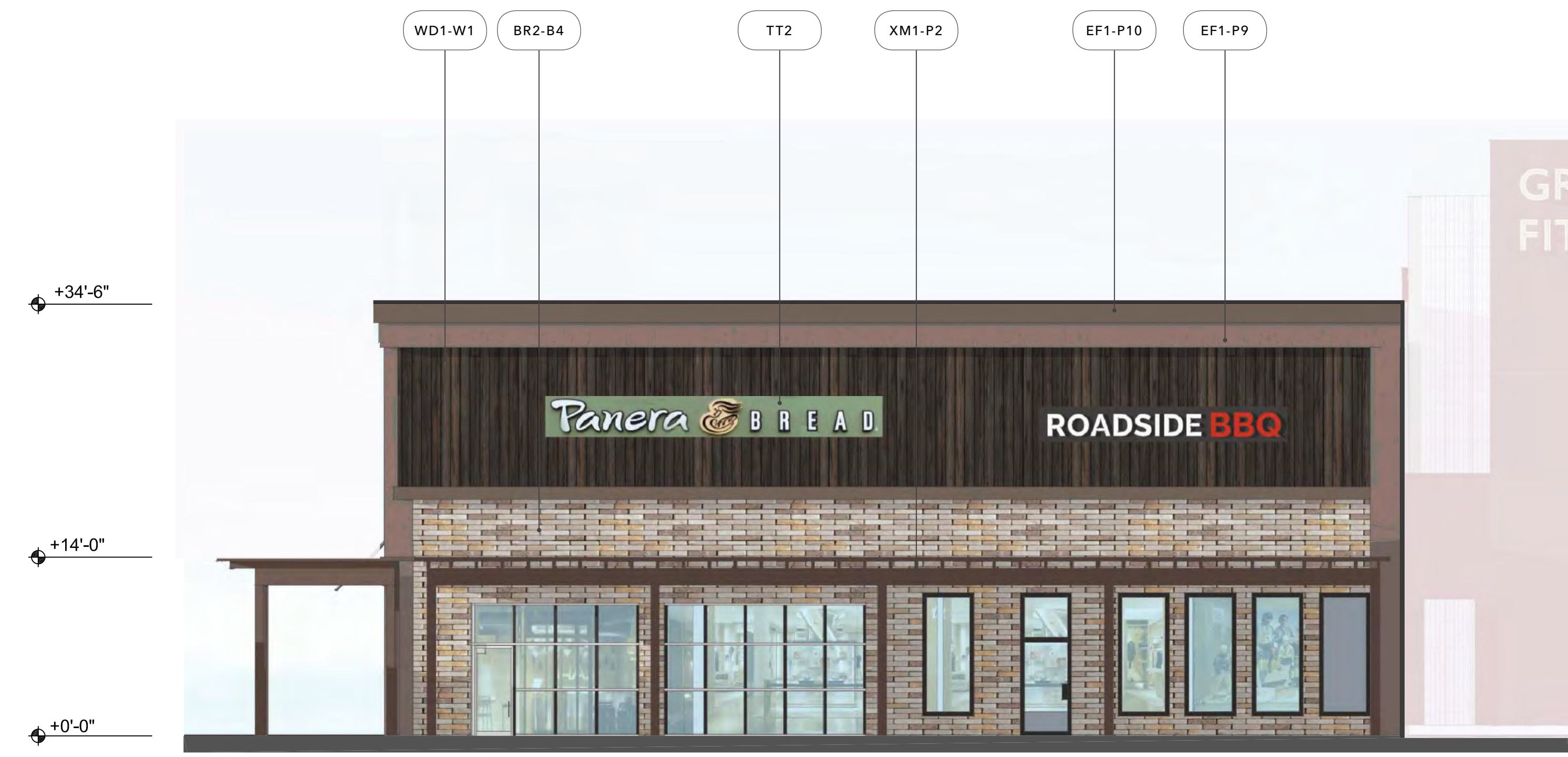
SHOPS 1
 EXISTING 1-STORY BUILDING
 MERCANTILE GROUP M - RETAIL USE
 CONSTRUCTION TYPE - IIIB FULLY SPRINKLERED



2025 MASTER PLAN - SHOPS 1 FLOOR PLAN



KEY PLAN



NORTH ELEVATION



EAST ELEVATION



SOUTH ELEVATION

MATERIAL

- BR1 Thin Brick
- BR2 Face Brick, Roman
- CT1 Ceramic / Porcelain Tile
- CM1 CMU, Smooth Finish, Painted
- CM2 CMU with Skim Coat Stucco (*)
- CN1 Concrete Base (GFRC)
- EF1 Stucco - Textured Finish (**)
- EF2 Stucco - Smooth Finish (**)
- GL1 Glazing, Translucent
- M1 Decorative Steel Frame
- M2 Aluminum Infill Panel
- M3 Steel Trellis
- M4 Steel Entry Canopy
- M5 Metal Fascia and Coping
- M6 Steel Structure
- M7 Aluminum Break Metal
- M8 Decorative Laser Cut Metal Panel
- M9 Aluminum Composite Metal Panel
- M10 Corrugated Metal
- WD1 Wood - Lap Siding (**)
- WD2 Wood - Board and Batten Siding (**)
- WD3 Wood - Rustic Barnwood (***)
- WD4 Wood - Vertical Siding (**)

COLOR (DESIGN INTENT)

- NA No Additional Finish
- B1 Red & Brick Orange Mix
- B2 Dark Gray Mix
- B3 Brown & Gray Mix
- B4 Tan & Brown Mix
- CC1 Natural Gray Finish
- CC2 Board-form Cast, Dark Tan
- M1 Dark Brown Metal
- M2 Cool White Metal
- P1 Light Tan
- P2 Dark Black-Brown 01
- P3 Medium Warm Gray 01
- P4 Light Warm Gray
- P5 Medium Warm Gray 02
- P6 White
- P7 Medium Tan
- P8 Cream White
- P9 Medium Taupe
- P10 Dark Black-Brown 02
- P11 Dark Gray-Black
- P12 Dark Cool Gray
- P13 Dark Warm Gray
- P14 Red
- P15 Light Cool Gray

MISCELLANEOUS ITEMS

- ART1 Mural or Artwork, TBD
- EGP Environmental Graphic Panel
- FAB1 Fabric awning
- LT1 Decorative Light Fixture
- LT2 Decorative Light Sconce
- LP1 Landscape Planter and Green Screen
- LED1 LED Screen by others
- PV1 Photovoltaic Solar Panels
- TT1 Tenant storefront infill by others
- TT2 Tenant signage by others

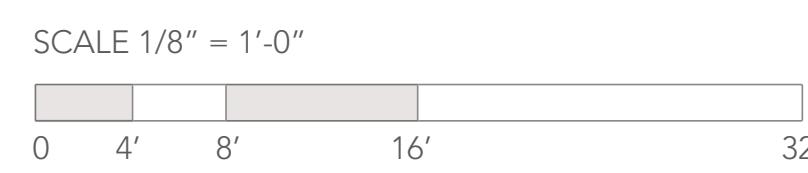
- T1 White
- T2 Wood-like Pattern
- VAR VARIES
- W1 Walnut Brown (****)
- W2 White Oak (****)
- W3 Cedar Brown (****)

NOTES

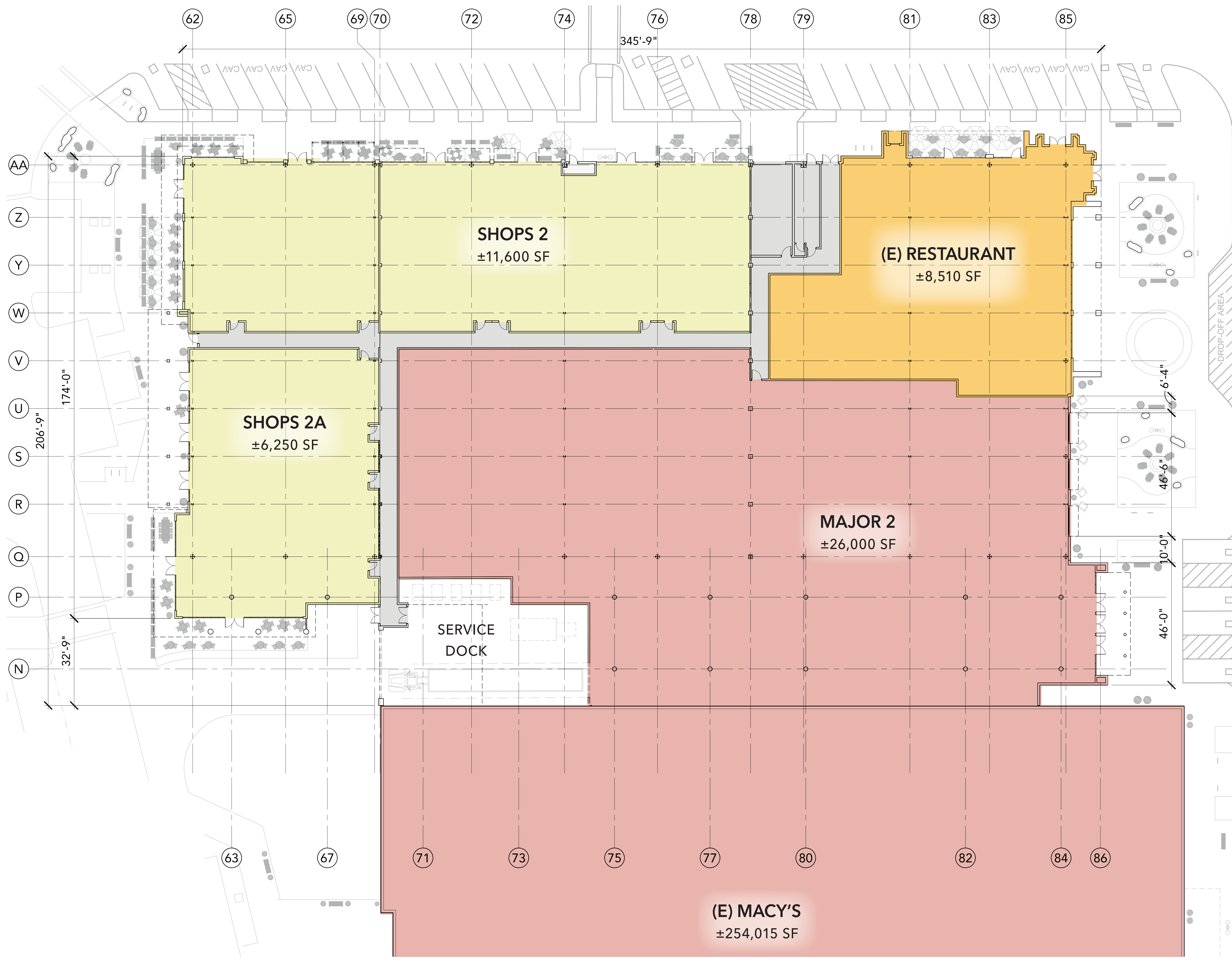
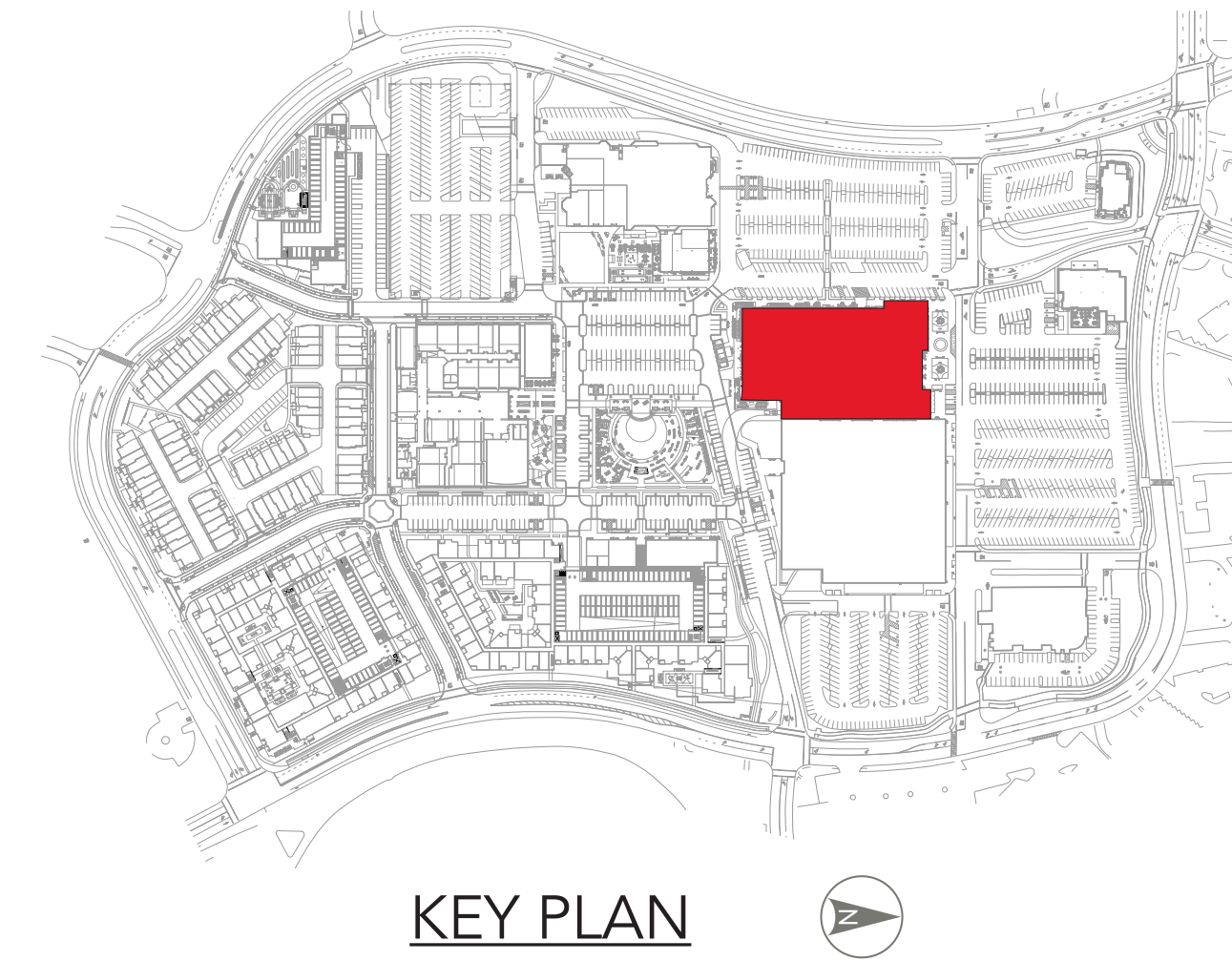
- (*) Elastomeric Coating
- (**) Wood-like Fiber-cement Board
- (***) Wood-like Interlocking Wall Panels
- (****) Aesthetic Intent Only

EXISTING TO REMAIN

- XBR1 Existing Brick to remain
- XM1 Existing Steel Trellis to remain
- XCT1 Existing Tile to remain
- XCM1 Existing CMU to remain
- XRF1 Existing Roof to remain
- XEF1 Existing Stucco to remain



2025 MASTER PLAN - SHOPS 1 ELEVATIONS



LEGEND

SHOPS	
PAD	
MAJOR	
GYM	
CINEMA	
STRUCTURED PARKING	
SERVICE	

BUILDING SUMMARY

SHOPS 2, 2A, MAJOR 2, RESTAURANT

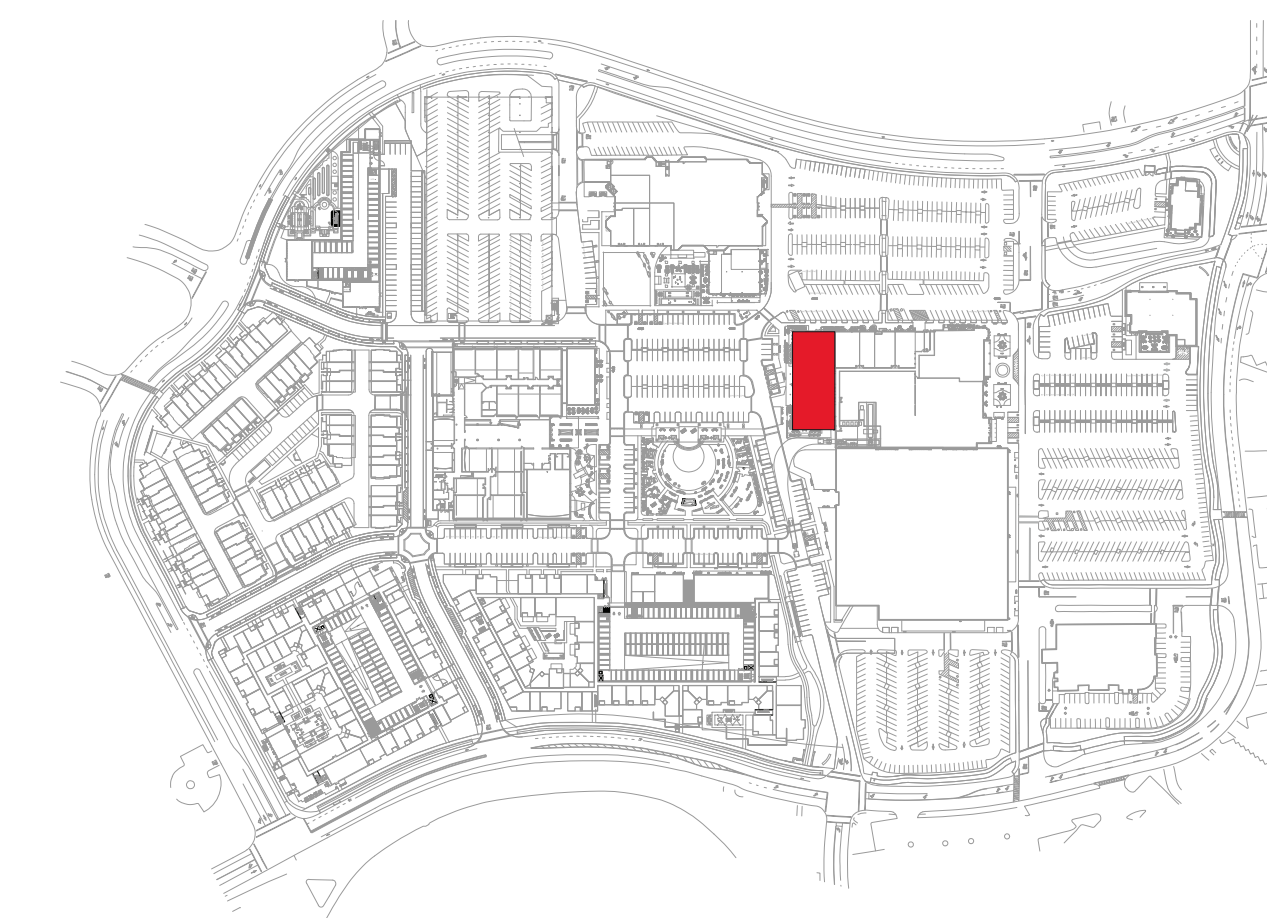
1-STORY BUILDING
 ASSEMBLY GROUP A-2 - RESTAURANT USE
 MERCANTILE GROUP M - RETAIL USE
 CONSTRUCTION TYPE - IIA FULLY SPRINKLERED

EXISTING ANCHOR TO REMAIN

1-STORY BUILDING
 MERCANTILE GROUP M - RETAIL USE
 CONSTRUCTION TYPE - IA FULLY SPRINKLERED



2025 MASTER PLAN - SHOPS 2, 2A, AND MAJOR 2 FLOOR PLAN



KEY PLAN



MATERIAL

- BR1 Thin Brick
- BR2 Face Brick, Roman
- CT1 Ceramic / Porcelain Tile
- CM1 CMU, Smooth Finish, Painted
- CM2 CMU with Skim Coat Stucco (*)
- CN1 Concrete Base (GFRC)
- EF1 Stucco - Textured Finish (**)
- EF2 Stucco - Smooth Finish (**)
- GL1 Glazing, Translucent
- M1 Decorative Steel Frame
- M2 Aluminum Infill Panel
- M3 Steel Trellis
- M4 Steel Entry Canopy
- M5 Metal Fascia and Coping
- M6 Steel Structure
- M7 Aluminum Break Metal
- M8 Decorative Laser Cut Metal Panel
- M9 Aluminum Composite Metal Panel
- M10 Corrugated Metal
- WD1 Wood - Lap Siding (**)
- WD2 Wood - Board and Batten Siding (**)
- WD3 Wood - Rustic Barnwood (***)
- WD4 Wood - Vertical Siding (**)

COLOR (DESIGN INTENT)

- NA No Additional Finish
- B1 Red & Brick Orange Mix
- B2 Dark Gray Mix
- B3 Brown & Gray Mix
- B4 Tan & Brown Mix
- CC1 Natural Gray Finish
- CC2 Board-form Cast, Dark Tan
- M1 Dark Brown Metal
- M2 Cool White Metal
- P1 Light Tan
- P2 Dark Black-Brown 01
- P3 Medium Warm Gray 01
- P4 Light Warm Gray
- P5 Medium Warm Gray 02
- P6 White
- P7 Medium Tan
- P8 Cream White
- P9 Medium Taupe
- P10 Dark Black-Brown 02
- P11 Dark Gray-Black
- P12 Dark Cool Gray
- P13 Dark Warm Gray
- P14 Red
- P15 Light Cool Gray
- T1 White
- T2 Wood-like Pattern
- VAR VARIES
- W1 Walnut Brown (****)
- W2 White Oak (****)
- W3 Cedar Brown (****)

MISCELLANEOUS ITEMS

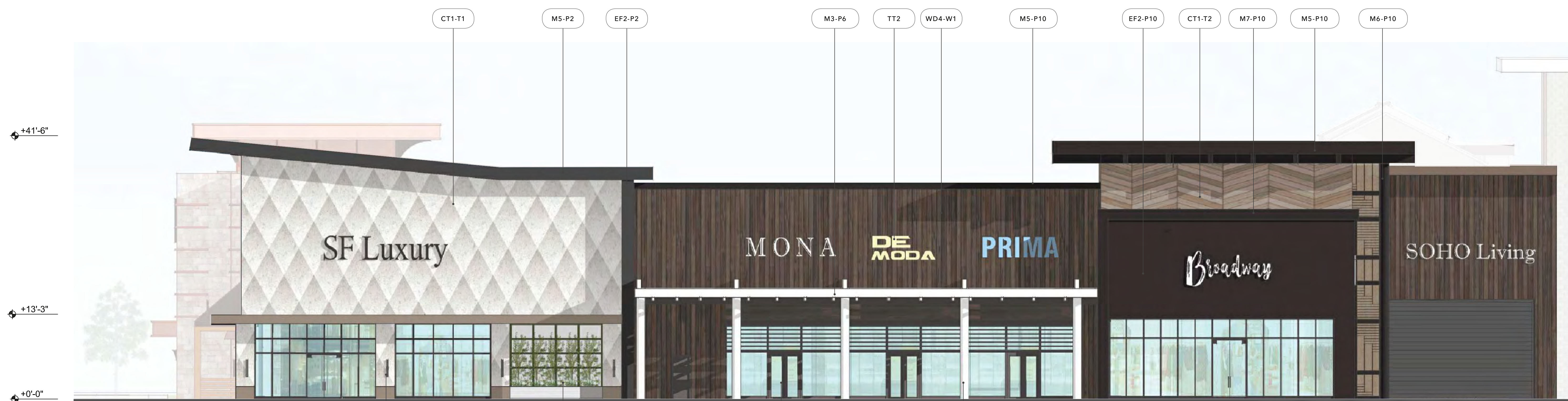
- ART1 Mural or Artwork, TBD
- EGP Environmental Graphic Panel
- FAB1 Fabric awning
- LT1 Decorative Light Fixture
- LT2 Decorative Light Sconce
- LP1 Landscape Planter and Green Screen
- LED1 LED Screen by others
- PV1 Photovoltaic Solar Panels
- TT1 Tenant storefront infill by others
- TT2 Tenant signage by others

NOTES

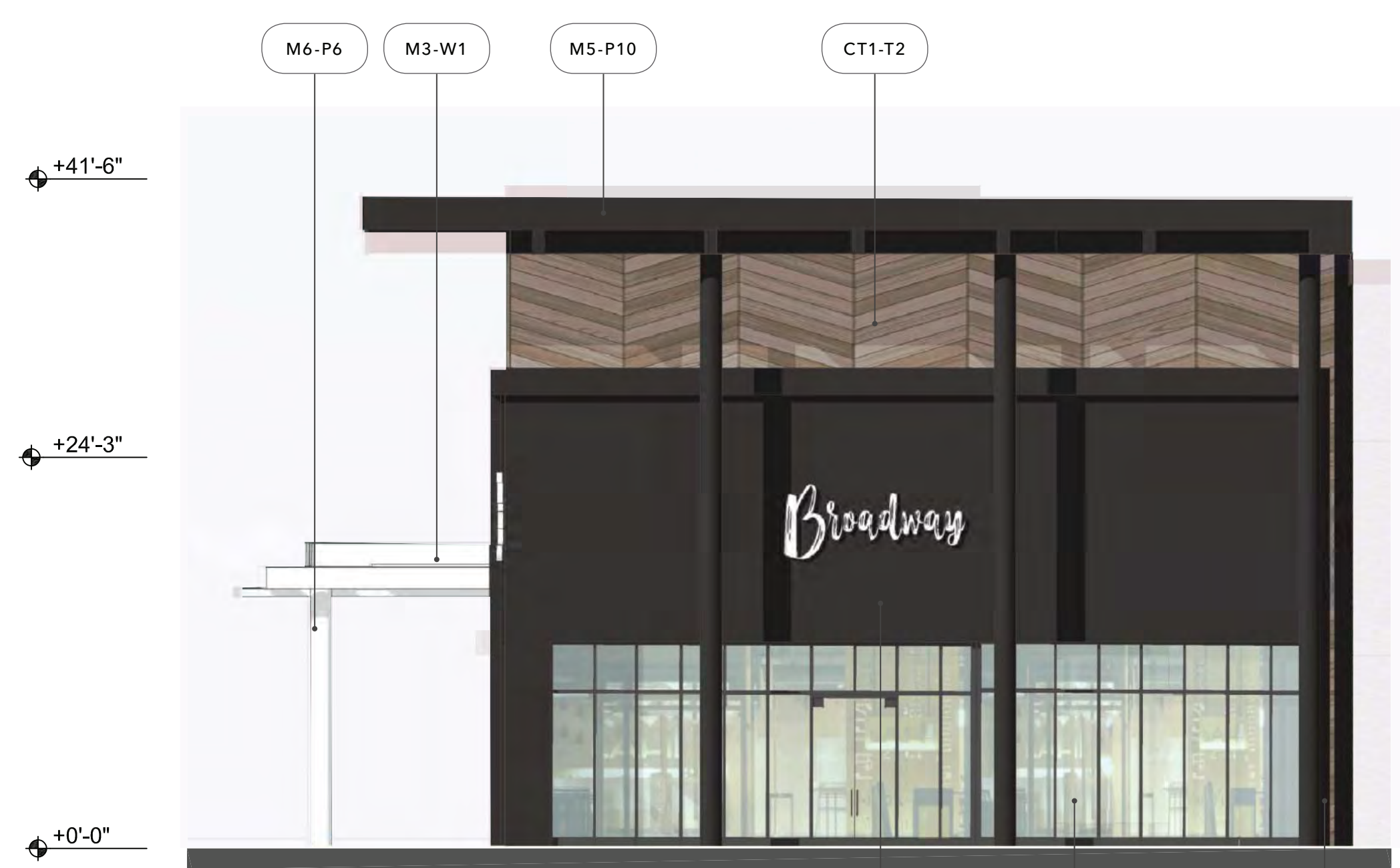
- (*) Elastomeric Coating
- (**) Wood-like Fiber-cement Board
- (***) Wood-like Interlocking Wall Panels
- (****) Aesthetic Intent Only

EXISTING TO REMAIN

- XBR1 Existing Brick to remain
- XM1 Existing Steel Trellis to remain
- XCT1 Existing Tile to remain
- XCM1 Existing CMU to remain
- XRF1 Existing Roof to remain
- XEF1 Existing Stucco to remain



SOUTH ELEVATION



EAST ELEVATION

SCALE 1/8" = 1'-0"



2025 MASTER PLAN - SHOPS 2A ELEVATIONS

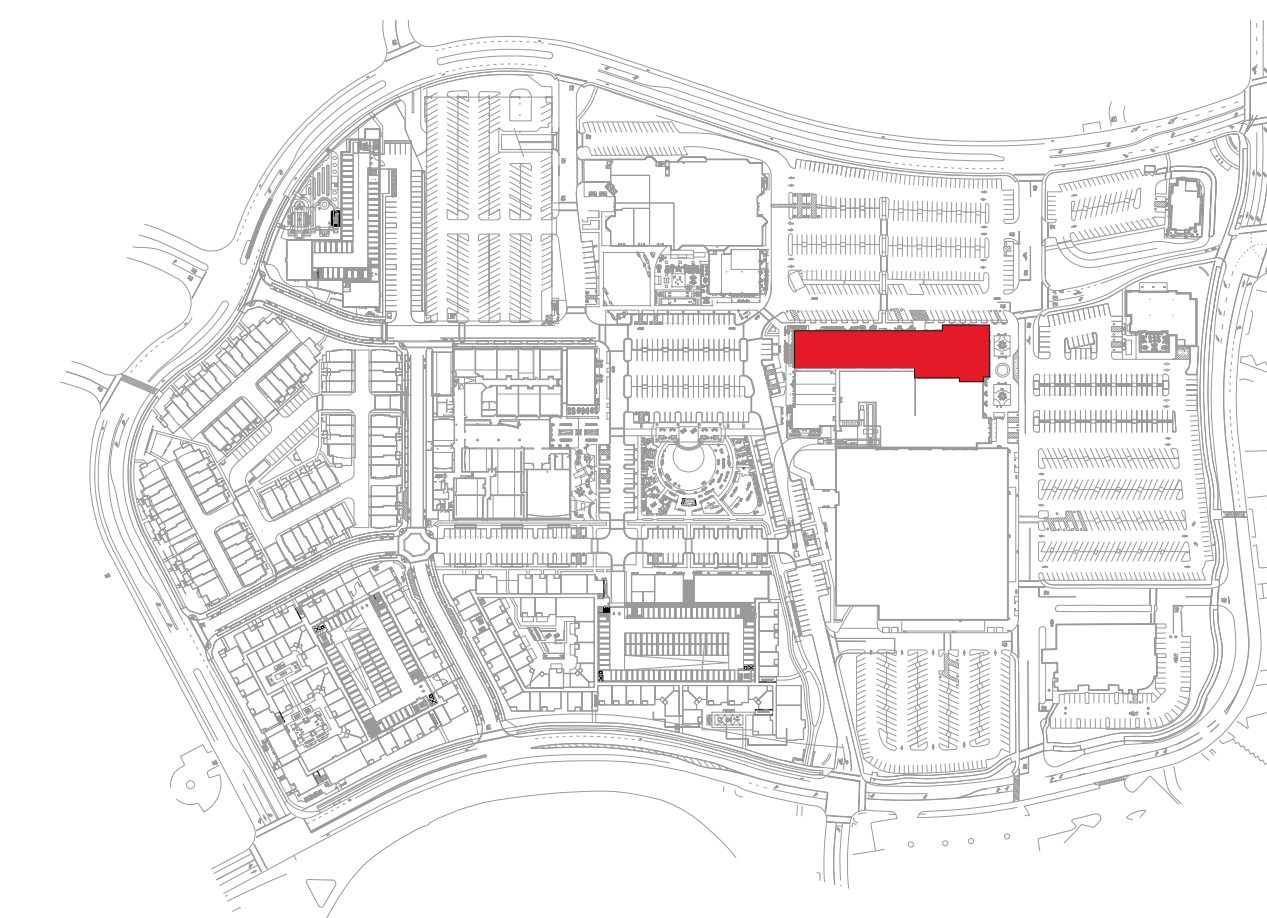
NORTHGATE TOWN SQUARE

REDEVELOPMENT PLAN

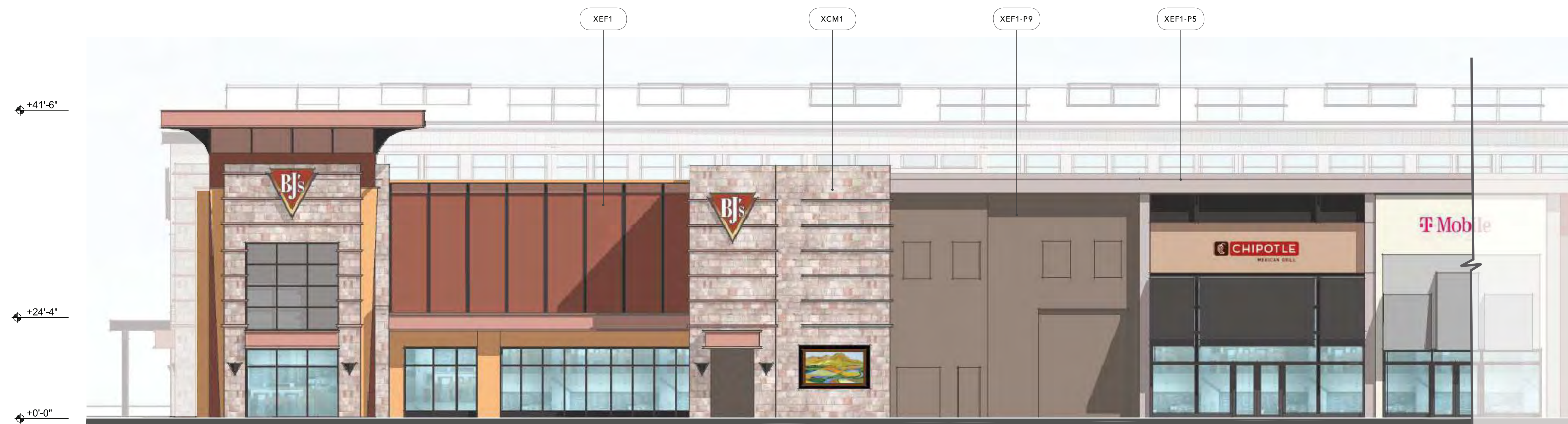
MARCH 09, 2022



RT-8



KEY PLAN



WEST ELEVATION - NORTH



WEST ELEVATION - SOUTH

MATERIAL

- BR1 Thin Brick
- BR2 Face Brick, Roman
- CT1 Ceramic / Porcelain Tile
- CM1 CMU, Smooth Finish, Painted
- CM2 CMU with Skim Coat Stucco (*)
- CN1 Concrete Base (GFRC)
- EF1 Stucco - Textured Finish (**)
- EF2 Stucco - Smooth Finish (**)
- GL1 Glazing, Translucent
- M1 Decorative Steel Frame
- M2 Aluminum Infill Panel
- M3 Steel Trellis
- M4 Steel Entry Canopy
- M5 Metal Fascia and Coping
- M6 Steel Structure
- M7 Aluminum Break Metal
- M8 Decorative Laser Cut Metal Panel
- M9 Aluminum Composite Metal Panel
- M10 Corrugated Metal
- WD1 Wood - Lap Siding (**)
- WD2 Wood - Board and Batten Siding (**)
- WD3 Wood - Rustic Barnwood (***)
- WD4 Wood - Vertical Siding (**)

COLOR (DESIGN INTENT)

- NA No Additional Finish
- B1 Red & Brick Orange Mix
- B2 Dark Gray Mix
- B3 Brown & Gray Mix
- B4 Tan & Brown Mix
- CC1 Natural Gray Finish
- CC2 Board-form Cast, Dark Tan
- M1 Dark Brown Metal
- M2 Cool White Metal
- P1 Light Tan
- P2 Dark Black-Brown 01
- P3 Medium Warm Gray 01
- P4 Light Warm Gray
- P5 Medium Warm Gray 02
- P6 White
- P7 Medium Tan
- P8 Cream White
- P9 Medium Taupe
- P10 Dark Black-Brown 02
- P11 Dark Gray-Black
- P12 Dark Cool Gray
- P13 Dark Warm Gray
- P14 Red
- P15 Light Cool Gray

MISCELLANEOUS ITEMS

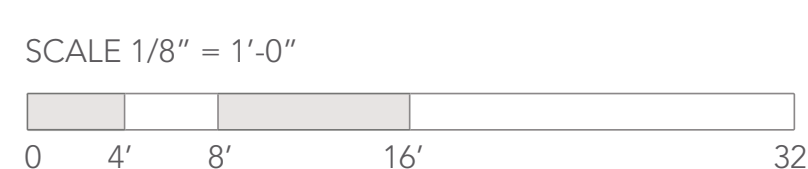
- ART1 Mural or Artwork, TBD
- EGP Environmental Graphic Panel
- FAB1 Fabric awning
- LT1 Decorative Light Fixture
- LT2 Decorative Light Sconce
- LP1 Landscape Planter and Green Screen
- LED1 LED Screen by others
- PV1 Photovoltaic Solar Panels
- TT1 Tenant storefront infill by others
- TT2 Tenant signage by others

NOTES

- (*) Elastomeric Coating
- (**) Wood-like Fiber-cement Board
- (***) Wood-like Interlocking Wall Panels
- (****) Aesthetic Intent Only

EXISTING TO REMAIN

- XBR1 Existing Brick to remain
- XM1 Existing Steel Trellis to remain
- XCT1 Existing Tile to remain
- XCM1 Existing CMU to remain
- XRF1 Existing Roof to remain
- XEF1 Existing Stucco to remain



2025 MASTER PLAN - SHOPS 2A ELEVATIONS

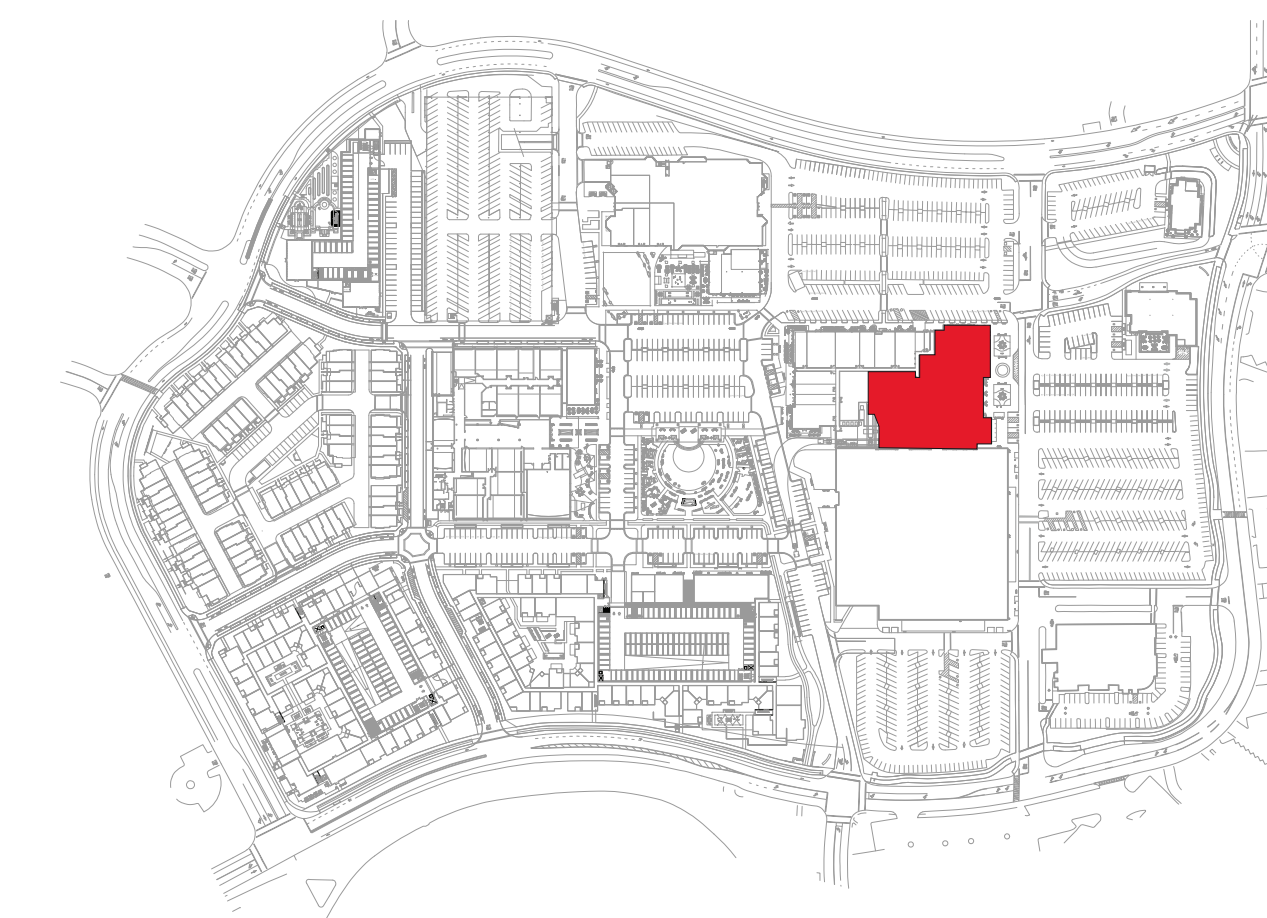
NORTHGATE TOWN SQUARE

REDEVELOPMENT PLAN

MARCH 09, 2022



RT-9



KEY PLAN

MATERIAL

- BR1 Thin Brick
- BR2 Face Brick, Roman
- CT1 Ceramic / Porcelain Tile
- CM1 CMU, Smooth Finish, Painted
- CM2 CMU with Skim Coat Stucco (*)
- CN1 Concrete Base (GFRC)
- EF1 Stucco - Textured Finish (*)
- EF2 Stucco - Smooth Finish (*)
- GL1 Glazing, Translucent
- M1 Decorative Steel Frame
- M2 Aluminum Infill Panel
- M3 Steel Trellis
- M4 Steel Entry Canopy
- M5 Metal Fascia and Coping
- M6 Steel Structure
- M7 Aluminum Break Metal
- M8 Decorative Laser Cut Metal Panel
- M9 Aluminum Composite Metal Panel
- M10 Corrugated Metal
- WD1 Wood - Lap Siding (**)
- WD2 Wood - Board and Batten Siding (**)
- WD3 Wood - Rustic Barnwood (***)
- WD4 Wood - Vertical Siding (**)

MISCELLANEOUS ITEMS

- ART1 Mural or Artwork, TBD
- EGP Environmental Graphic Panel
- FAB1 Fabric awning
- LT1 Decorative Light Fixture
- LT2 Decorative Light Sconce
- LP1 Landscape Planter and Green Screen
- LED1 LED Screen by others
- PV1 Photovoltaic Solar Panels
- TT1 Tenant storefront infill by others
- TT2 Tenant signage by others

COLOR (DESIGN INTENT)

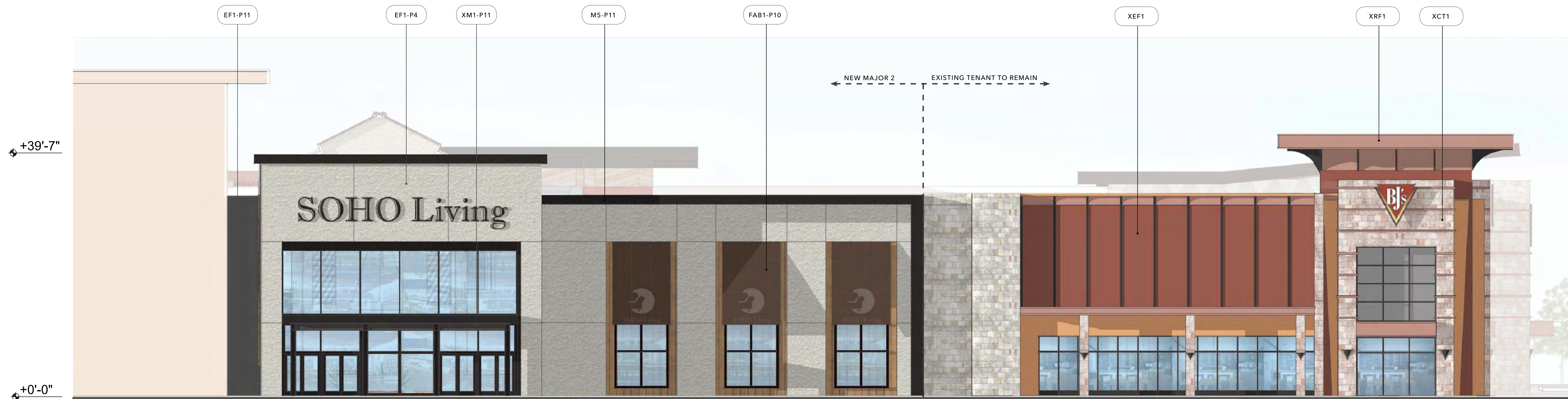
- NA No Additional Finish
- B1 Red & Brick Orange Mix
- B2 Dark Gray Mix
- B3 Brown & Gray Mix
- B4 Tan & Brown Mix
- CC1 Natural Gray Finish
- CC2 Board-form Cast, Dark Tan
- M1 Dark Brown Metal
- M2 Cool White Metal
- P1 Light Tan
- P2 Dark Black-Brown 01
- P3 Medium Warm Gray 01
- P4 Light Warm Gray
- P5 Medium Warm Gray 02
- P6 White
- P7 Medium Tan
- P8 Cream White
- P9 Medium Taupe
- P10 Dark Black-Brown 02
- P11 Dark Gray-Black
- P12 Dark Cool Gray
- P13 Dark Warm Gray
- P14 Red
- P15 Light Cool Gray
- T1 White
- T2 Wood-like Pattern
- VAR VARIES
- W1 Walnut Brown (****)
- W2 White Oak (****)
- W3 Cedar Brown (****)

NOTES

- (*) Elastomeric Coating
- (**) Wood-like Fiber-cement Board
- (***) Wood-like Interlocking Wall Panels
- (****) Aesthetic Intent Only

EXISTING TO REMAIN

- XBR1 Existing Brick to remain
- XM1 Existing Steel Trellis to remain
- XCT1 Existing Tile to remain
- XCM1 Existing CMU to remain
- XRF1 Existing Roof to remain
- XEF1 Existing Stucco to remain



NORTH ELEVATION

SCALE 1/8" = 1'-0"
 0 4' 8' 16' 32'

2025 MASTER PLAN - MAJOR 2 ELEVATION

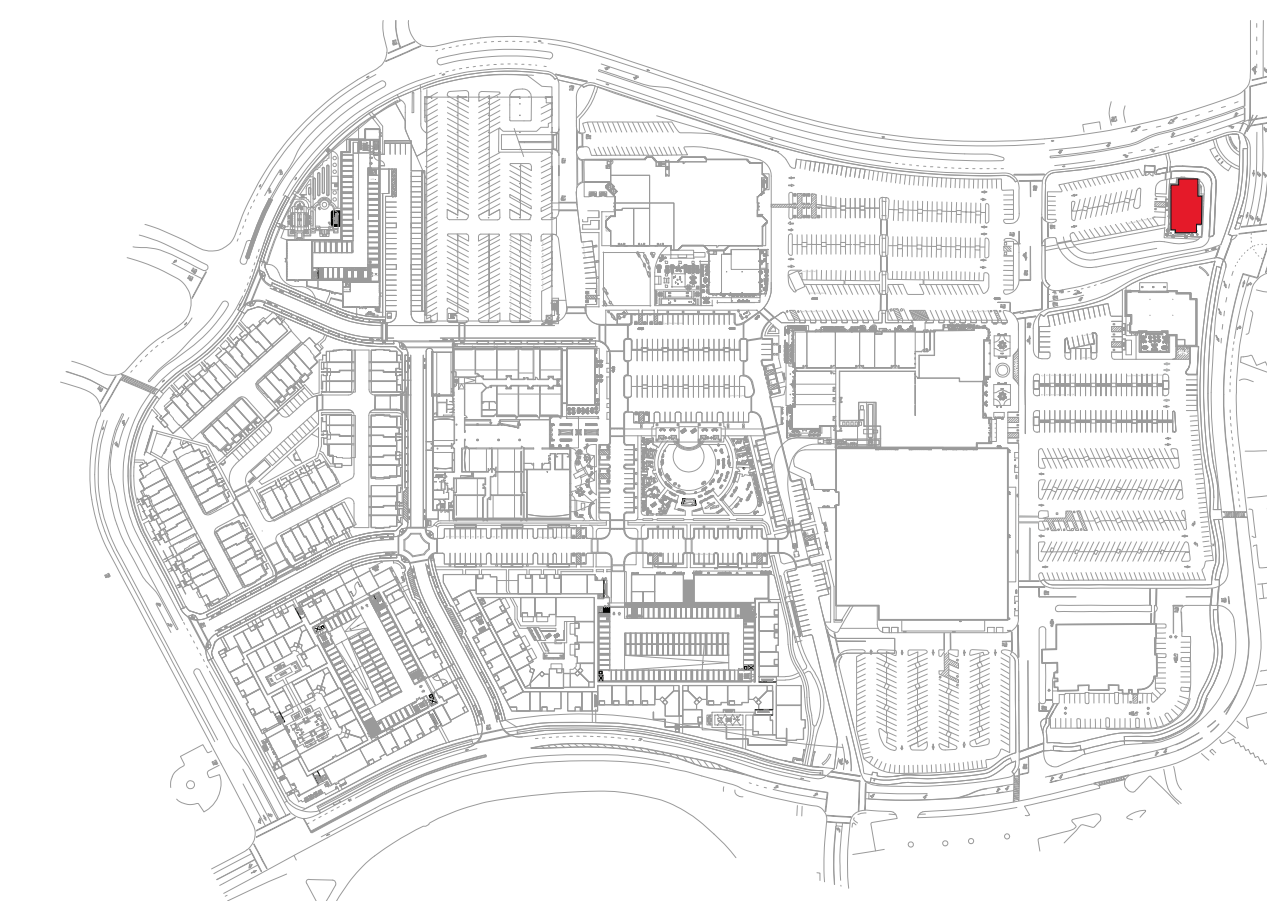
NORTHGATE TOWN SQUARE

REDEVELOPMENT PLAN

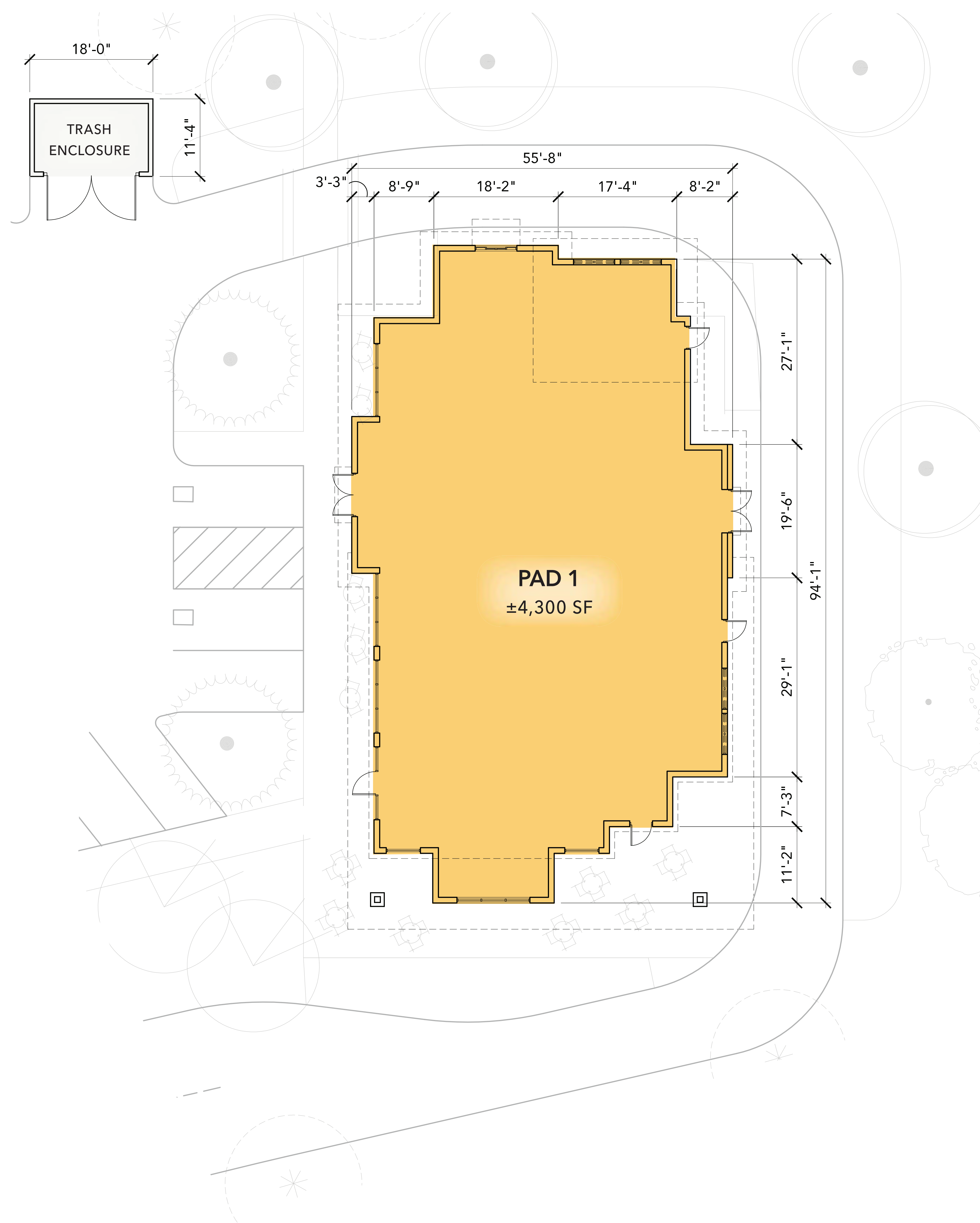
MARCH 09, 2022



RT-10



KEY PLAN



LEGEND

- SHOPS
- PAD
- MAJOR
- GYM
- CINEMA
- STRUCTURED PARKING
- SERVICE

BUILDING SUMMARY

1-STORY BUILDING
 ASSEMBLY GROUP A-2 - RESTAURANT USE
 CONSTRUCTION TYPE - VB FULLY SPRINKLERED

SCALE 1/8" = 1'-0"
 0 4' 8' 16' 32'



2025 MASTER PLAN - PAD 1 FLOOR PLAN

NORTHGATE TOWN SQUARE

REDEVELOPMENT PLAN

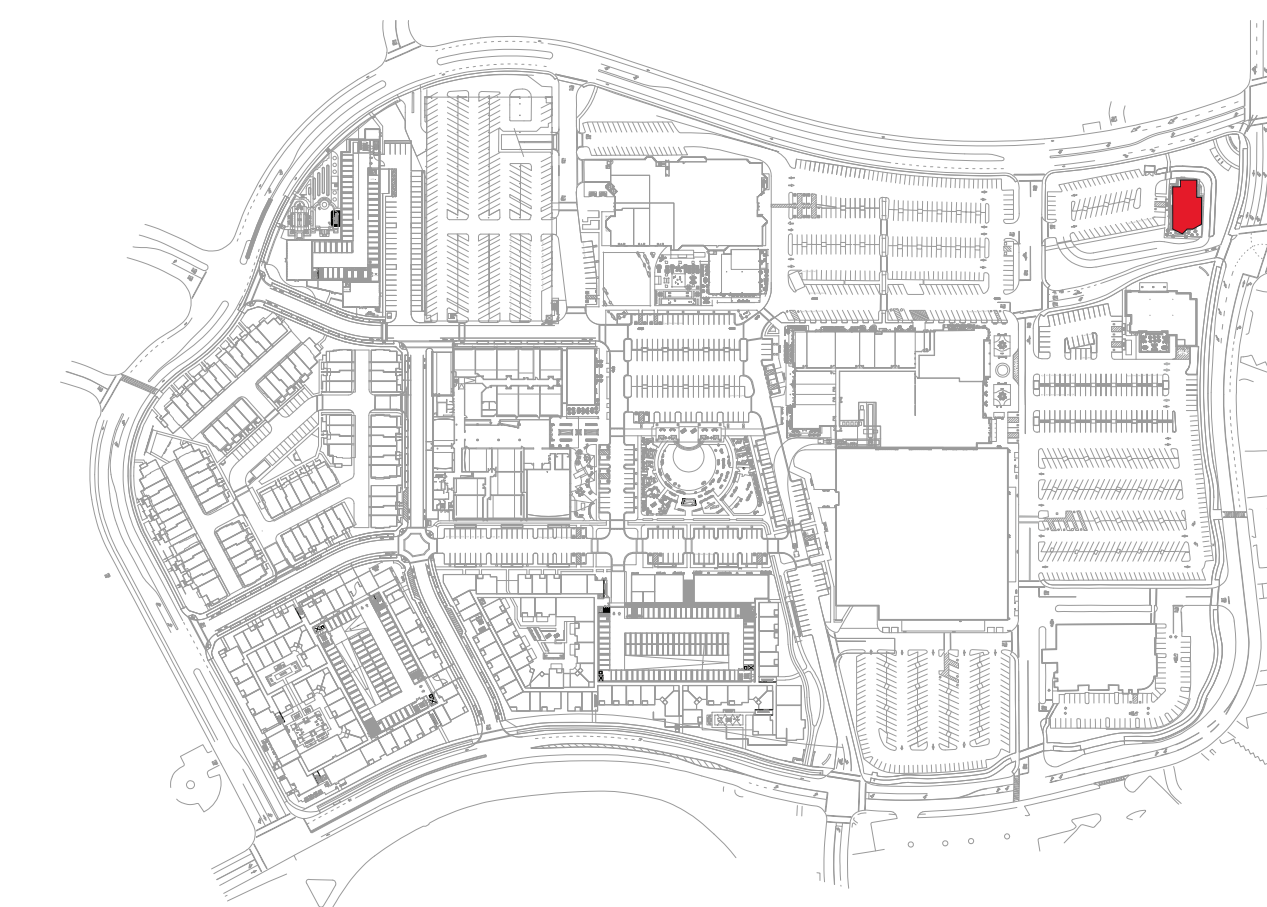
MARCH 09, 2022



CSW | ST2



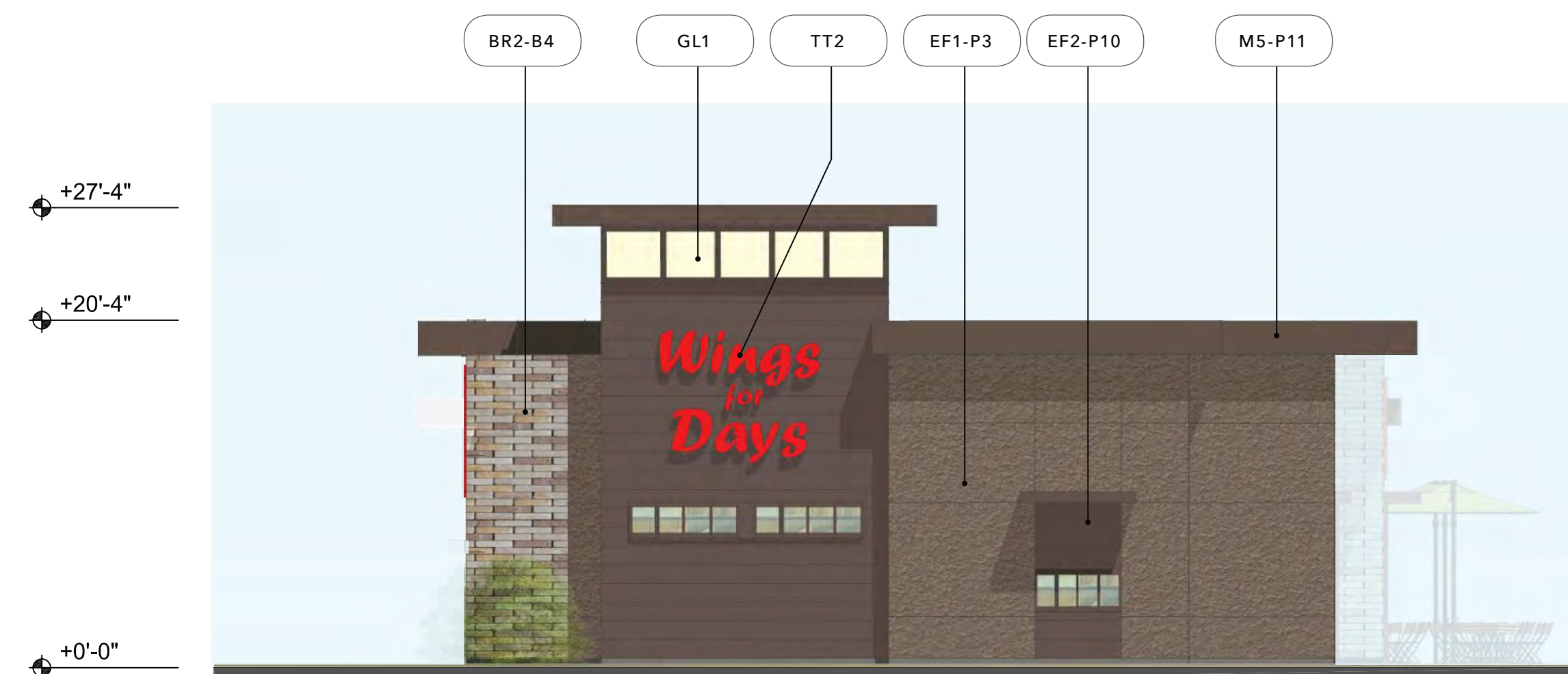
RT-11



KEY PLAN



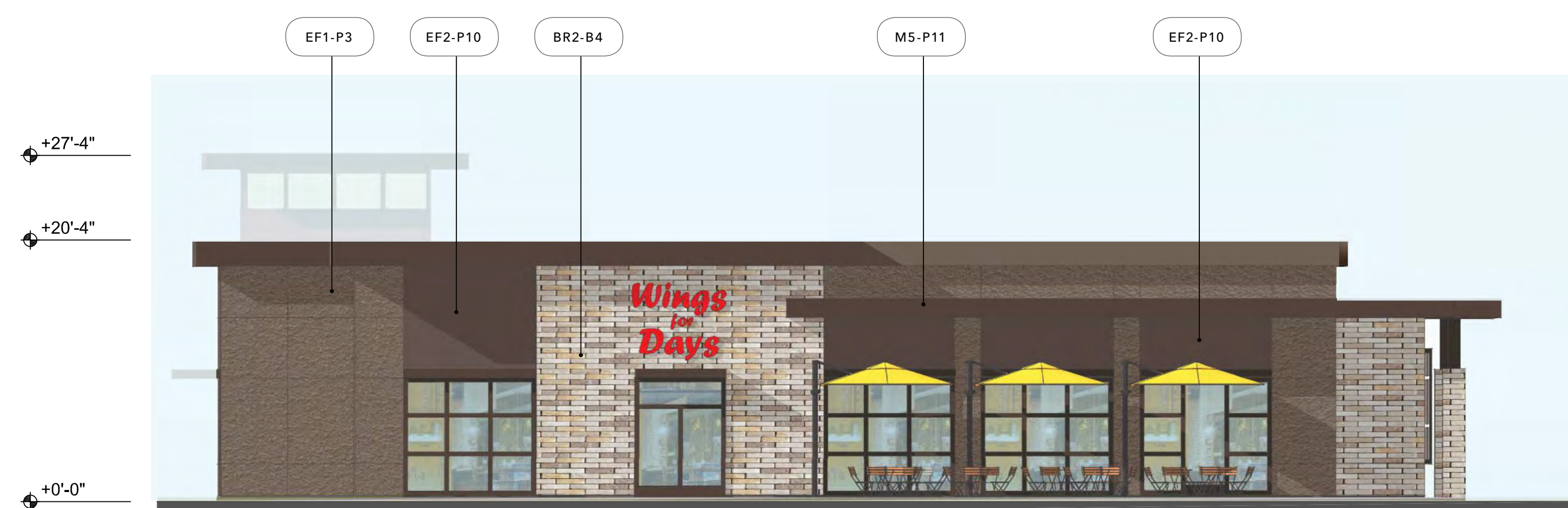
NORTH ELEVATION



WEST ELEVATION



EAST ELEVATION



SOUTH ELEVATION

MATERIAL

- BR1 Thin Brick
- BR2 Face Brick, Roman
- CT1 Ceramic / Porcelain Tile
- CM1 CMU, Smooth Finish, Painted
- CM2 CMU with Skim Coat Stucco (*)
- CN1 Concrete Base (GFRC)
- EF1 Stucco - Textured Finish (*)
- EF2 Stucco - Smooth Finish (*)
- GL1 Glazing, Translucent
- M1 Decorative Steel Frame
- M2 Aluminum Infill Panel
- M3 Steel Trellis
- M4 Steel Entry Canopy
- M5 Metal Fascia and Coping
- M6 Steel Structure
- M7 Aluminum Break Metal
- M8 Decorative Laser Cut Metal Panel
- M9 Aluminum Composite Metal Panel
- M10 Corrugated Metal
- WD1 Wood - Lap Siding (**)
- WD2 Wood - Board and Batten Siding (**)
- WD3 Wood - Rustic Barnwood (***)
- WD4 Wood - Vertical Siding (**)

COLOR (DESIGN INTENT)

- NA No Additional Finish
- B1 Red & Brick Orange Mix
- B2 Dark Gray Mix
- B3 Brown & Gray Mix
- B4 Tan & Brown Mix
- CC1 Natural Gray Finish
- CC2 Board-form Cast, Dark Tan
- M1 Dark Brown Metal
- M2 Cool White Metal
- P1 Light Tan
- P2 Dark Black-Brown 01
- P3 Medium Warm Gray 01
- P4 Light Warm Gray
- P5 Medium Warm Gray 02
- P6 White
- P7 Medium Tan
- P8 Cream White
- P9 Medium Taupe
- P10 Dark Black-Brown 02
- P11 Dark Gray-Black
- P12 Dark Cool Gray
- P13 Dark Warm Gray
- P14 Red
- P15 Light Cool Gray
- T1 White
- T2 Wood-like Pattern
- VAR VARIES
- W1 Walnut Brown (****)
- W2 White Oak (****)
- W3 Cedar Brown (****)

MISCELLANEOUS ITEMS

- ART1 Mural or Artwork, TBD
- EGP Environmental Graphic Panel
- FAB1 Fabric awning
- LT1 Decorative Light Fixture
- LT2 Decorative Light Sconce
- LP1 Landscape Planter and Green Screen
- LED1 LED Screen by others
- PV1 Photovoltaic Solar Panels
- TT1 Tenant storefront infill by others
- TT2 Tenant signage by others

NOTES

- (*) Elastomeric Coating
- (**) Wood-like Fiber-cement Board
- (***) Wood-like Interlocking Wall Panels
- (****) Aesthetic Intent Only

EXISTING TO REMAIN

- XBR1 Existing Brick to remain
- XM1 Existing Steel Trellis to remain
- XCT1 Existing Tile to remain
- XCM1 Existing CMU to remain
- XRF1 Existing Roof to remain
- XEF1 Existing Stucco to remain

SCALE 1/8" = 1'-0"



2025 MASTER PLAN - PAD 1 ELEVATIONS

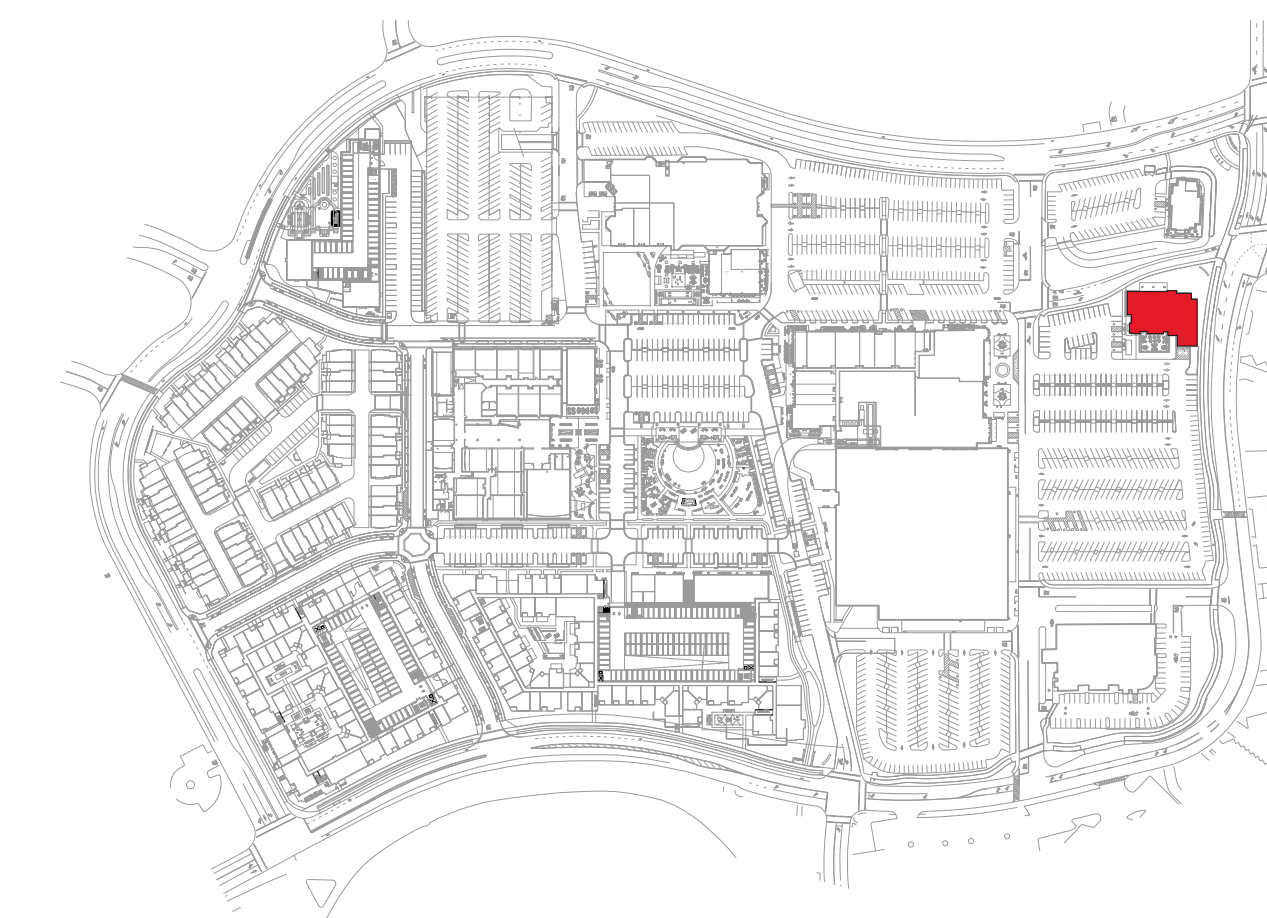
NORTHGATE TOWN SQUARE

REDEVELOPMENT PLAN

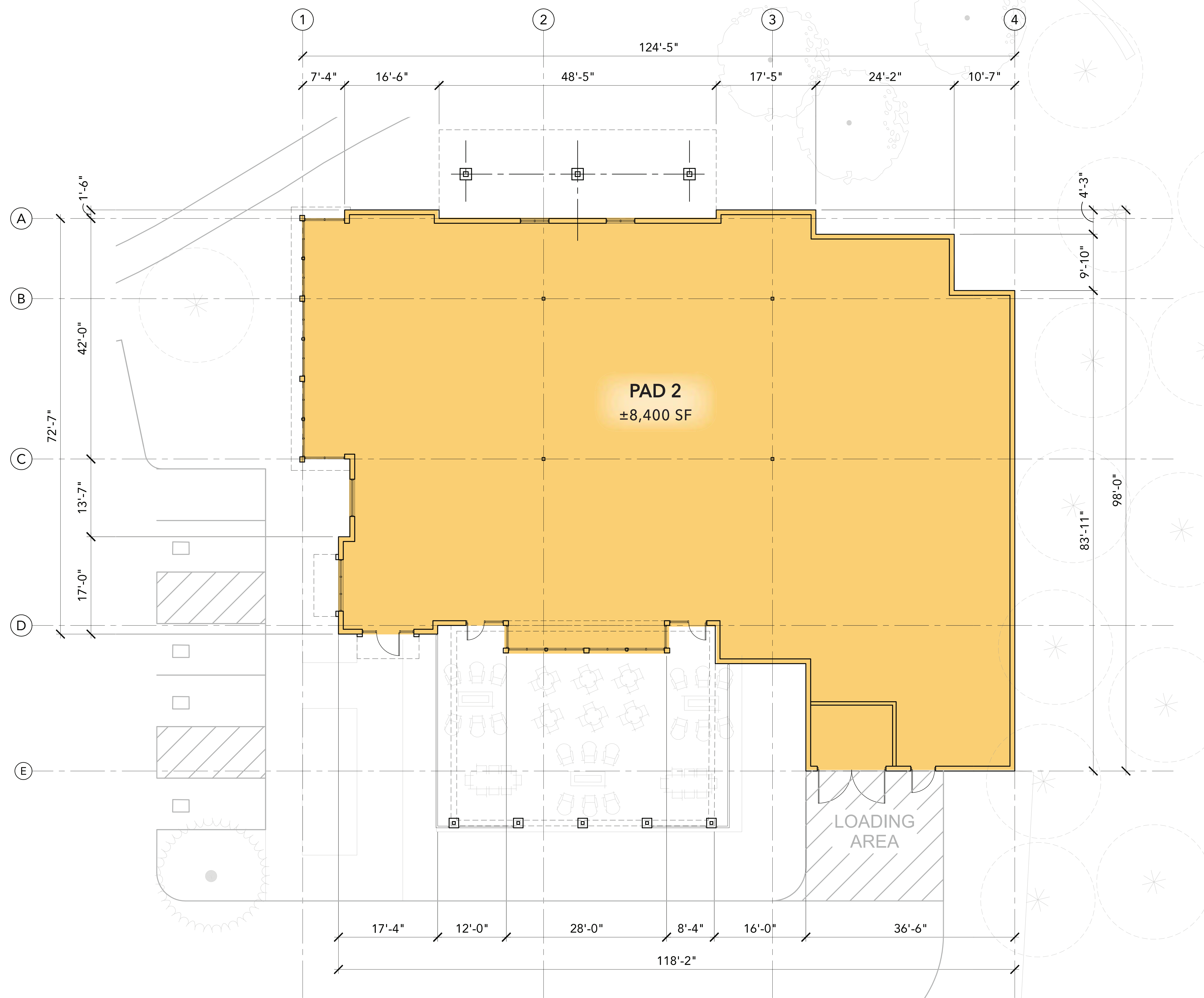
MARCH 09, 2022



RT-12



KEY PLAN



BUILDING SUMMARY

1-STORY BUILDING
 ASSEMBLY GROUP A-2 - RESTAURANT USE
 CONSTRUCTION TYPE - VB FULLY SPRINKLERED

LEGEND

SHOPS	[Light Green Box]
PAD	[Orange Box]
MAJOR	[Red Box]
GYM	[Dark Red Box]
CINEMA	[Purple Box]
STRUCTURED PARKING	[Grey Box]
SERVICE	[White Box]



2025 MASTER PLAN - PAD 2 FLOOR PLAN

NORTHGATE TOWN SQUARE

REDEVELOPMENT PLAN

MARCH 09, 2022



RT-13