



City of San Rafael
**CITYWIDE PARKS AND RECREATION
MASTER PLAN**

Draft Park Inventory and Assessment

2022-08-12



SAN RAFAEL
THE CITY WITH A MISSION

rhaa
Landscape
Architecture
& Planning

THIS PAGE IS INTENTIONALLY LEFT BLANK

DRAFT

PARK AND RECREATION FACILITIES



ALBERT PARK



ALBERT PARK

LOCATION: 151 Andersen Drive

SIZE: 13.3 Acres¹

PARK TYPE: Community Park¹

HISTORY:

- 1937 – Albert family convey 9 acres of property to City of San Rafael for neighborhood park
- 1950 – Albert Stadium completed
- 1978 - Master Plan developed
- 1993 - Albert Park Master Plan Renovation Plan
- 1994 - Agreement with Marin Bocce to build publicly accessible bocce ball facility and formal garden
- 1997 - Bocce court expansion
- 2001 – Parkside Children’s Center completed
- 2019 – Playground replacement completed

CURRENT CONDITION

Poor Fair **Good** Excellent

INVENTORY

AMENITIES	Baseball/Softball field, lit
	Bocce courts (8) Outdoor, (2) Indoor – Marin Bocce Federation
	Grass lawn
	Paved paths – concrete and asphalt
	Playground – school and tot age
	Rose Garden – Marin Bocce Federation
	Tennis courts (4), lit – (1) with pickleball striping

FURNISHINGS	Benches
	Bike parking
	Drinking fountains
	Picnic table
	Trash receptacles

FACILITIES	Albert Park Stadium
	Marin Bocce Federation
	Parkside Children’s Center
	San Rafael Community Center

RECREATION PROVIDED

- Baseball/softball rentals - Marin Catholic, Dominican College, San Rafael High School, MCLA Championship, Marin Baseball, San Rafael Little League, Marin Academy, Bee Stings
- City programming at baseball/softball field
- Tennis and pickleball
- Bocce – Marin Bocce Federation
- Rose Garden – public access and rentable for events, managed by Marin Bocce
- Passive play and recreation – playground, lawn
- Childcare – preschool and school age

CONSTRAINTS

- Mahon Creek along Albert Park Lane – potential flood control challenge
- Homelessness and safety - greater homelessness presence prior to playground replacement, however homeless community remain close to San Rafael Community Center
- High-use tennis courts
- Baseball/softball field maintenance

ESTIMATED MAINTENANCE

- High-use tennis courts
- Baseball/softball field maintenance
- Standard maintenance – lawn, weed abatement, irrigation, trash, blowing
- High amounts of garbage from homeless population and illegal dumping
- Bathroom cleaning and maintenance

ADDITIONAL OBSERVATIONS

- Albert Park is a heavily used community park
- 2019 playground replacement eased undesirable activities such as camping and illicit activities, although issues persist
- Agreement with Marin Bocce to build publicly accessible bocce ball facility has been extended over time for Bocce improvements and programming
- Large lawn is popular with dog owners
- No park restroom - restrooms are only provided within recreation facilities
- Site has had major water leak challenges, possibly in both domestic and irrigation lines

¹ *San Rafael General Plan 2040*

THIS PAGE IS INTENTIONALLY LEFT BLANK

DRAFT

ARBOR PARK



ARBOR PARK

LOCATION: Manuel T. Freitas Parkway at Las Gallinas Avenue

SIZE: 0.3 Acres¹

PARK TYPE: Pocket Park¹

HISTORY

- Unknown construction date – late 1950s or early 1960s based on adjacent developments
- 2017 – Freitas Parkway and Las Gallinas Ave intersection Improvements
- 2021 – San Rafael Social Justice Community Art Group develops ‘Regeneration’ mural

CURRENT CONDITION

Poor Fair Good **Excellent**

INVENTORY

AMENITIES	Grass lawn
	Paved paths – asphalt, concrete
FURNISHINGS	Arbor
	Benches
	Drinking fountain
	Park sign
	Trash receptacle

RECREATION PROVIDED

- Passive recreation – seating, pathway

CONSTRAINTS

- Long roadway frontage with limited visibility at portions of Manuel T. Freitas Parkway
- Limited parking to support park programming

ESTIMATED MAINTENANCE

- Standard maintenance – lawn, weed abatement, irrigation, trash
- Vandalism – graffiti removal on furnishings

ADDITIONAL OBSERVATIONS

- Occasional homeless camping observed
- Park is recently renovated with new enhancements expected
- San Rafael Social Justice Community Art Group developing ‘Regeneration’ mural with ADA accessible viewing area, benches, and drought tolerant plants to be installed 2022

¹ San Rafael General Plan 2040

BEACH PARK



BEACH PARK

LOCATION: 200 Yacht Club Drive

SIZE: 0.4 Acres¹

PARK TYPE: Pocket Park¹

HISTORY

- 1974 – Constructed with picnic tables, play areas, and volleyball courts
- 1997 – Leased to Herbert Crocker and William McDevitt (adjacent restaurant)
- 2014 – Leased to Terrapin Crossroads, LLP (adjacent restaurant)
- 2015 – Redesign of park under Terrapin Crossroads
- 2020 – Terrapin Crossroads partnership ends, park is closed to public

CURRENT CONDITION

Poor Fair Good Excellent

INVENTORY

AMENITIES	Artificial turf
	Boat launch
	Bocce courts
	Fire pits
	Paving – decomposed granite
FURNISHINGS	Stage – paved performance space with large shelter

RECREATION PROVIDED

- None – formerly provided volleyball courts and passive play

CONSTRAINTS

- No restroom
- Undesirable activities – isolated location, loitering, littering, sanitation issues, vandalism
- Location along San Rafael Canal - eroding Canal piers and sensitive environment

ESTIMATED MAINTENANCE

- Not actively maintained - locked and not used

ADDITIONAL OBSERVATIONS

- Beach Park has operated as a civic/private partnership between the City of San Rafael and Terrapin Crossroads and offered bocce ball courts, picnic tables and a play area as well as a music venue

¹ *San Rafael General Plan 2040*

BERNARD HOFFMAN FIELD



BERNARD HOFFMAN FIELD

LOCATION: 452 Las Colindas Road

SIZE: 3.8 Acres¹

PARK TYPE: Neighborhood Park¹

HISTORY

- Construction date unknown – mid 1950s based on adjacent development
- 1997 – City of San Rafael purchases Bernard Hoffman Field from Miller Creek School District (then Dixie School District) and City enters agreement with San Rafael Girls Softball for priority use in return for maintenance by San Rafael Girls Softball
- 2008 – Tire swing installed
- 2017 – Playground equipment removed due to safety concerns

CURRENT CONDITION

Poor **Fair** Good Excellent

INVENTORY

AMENITIES	Grass lawn
	Paving – concrete and decomposed granite
	Playground – tire swing
	Softball field – (2) softball diamonds with backstops, bleachers, and storage
FURNISHINGS	Bike parking
	Drinking fountains
	Picnic tables
	Park sign
	Trash receptacles

RECREATION PROVIDED

- San Rafael Girls’ Softball
- Passive play and recreation – playground, grass lawn, picnic tables

CONSTRAINTS

- No park lighting

ESTIMATED MAINTENANCE

- Standard maintenance – lawn, weed abatement, irrigation, trash

ADDITIONAL OBSERVATIONS

- San Rafael Girls Softball manages skimming while City maintains mowing, irrigation, and weed/fire abatement
- Site has major irrigation leaks

¹ San Rafael General Plan 2040



BOYD MEMORIAL PARK

LOCATION: 341 Laurel Place

SIZE: 1.75 Acres¹

PARK TYPE: Special Use Park¹

HISTORY

- 1905 - Dedicated to the City of San Rafael by Boyd family
- 1974 – Documented as Historic Landmark
- 1996 – Boyd Park/Museum Master Plan
- 1999 – Playground structure installed
- 2008 – Playground structure renovated with wood fiber resurfacing
- 2015 – Closed to public from January-April as an emergency measure and City cleaned/refurbished the park. Reopened with active community programming to deter former unwanted activities

CURRENT CONDITION

Poor **Fair** Good Excellent

INVENTORY

AMENITIES	Grass lawn
	Nature trails - unpaved
	Paved paths – asphalt, concrete
	Playground – school and tot age
	Tennis court (1) - closed
	Water feature – rock-lined channel from drainage pond at upper end of property

FURNISHINGS	Benches
	Drinking fountains
	Historic memorial plaque with drinking fountain – Boyd family dedication in 1905
	Park sign
	Picnic tables
	Portable restroom
	Trash receptacles
FACILITIES	Drainage pond – Old Mission Spring
	Boyd Gatehouse - Marin History Museum

RECREATION PROVIDED

- Passive play and recreation - playground, trails, water feature, picnic tables, benches

CONSTRAINTS

- Accessibility – no accessible entry from Mission Avenue, no accessible route to tennis court, no accessible route along drainage channel water feature at upper park
- Homelessness and safety - homeless encampments and transients have occupied park, City efforts to deter camping with boulders and removing picnic tables from the park, frequent graffiti and vandalism
- Aging infrastructure - drainage pond system leaks water, affecting the lower retaining walls and ground surfacing, tennis court closed to public
- Limited parking

ESTIMATED MAINTENANCE

- Standard maintenance – lawn, weed abatement, irrigation, trash
- Vandalism – graffiti removal, furnishings repair, etc.
- Drainage pond maintenance

ADDITIONAL OBSERVATIONS

- Tennis court has been programmed without City consent by private contractors
- The building that once held the public restrooms on site was burned down in years prior. Park closure has occurred recently to monitor illicit activity and homelessness on site

¹ *San Rafael General Plan 2040*

DRAFT

THIS PAGE IS INTENTIONALLY LEFT BLANK

DRAFT

BRET HARTE PARK



BRET HARTE PARK

LOCATION: 430 Irwin Street

SIZE: 0.5 Acres¹

PARK TYPE: Pocket Park¹

HISTORY

- Unknown construction date – early 1950s based on adjacent developments
- 1995 – Tot lot installed
- 2003 – Playground renovation
- 2019 – New restroom and shade structure installed

CURRENT CONDITION

Poor **Fair** Good Excellent

INVENTORY

AMENITIES	Basketball court – (1) full
	Paving – asphalt, concrete
	Playground – school and tot age
FURNISHINGS	Benches
	Bike parking
	Drinking fountain
	Park sign
	Picnic tables
	Shade structure
	Trash receptacles
FACILITIES	Restroom

RECREATION PROVIDED

- Passive play and recreation - playground, picnic tables, benches, basketball court

CONSTRAINTS

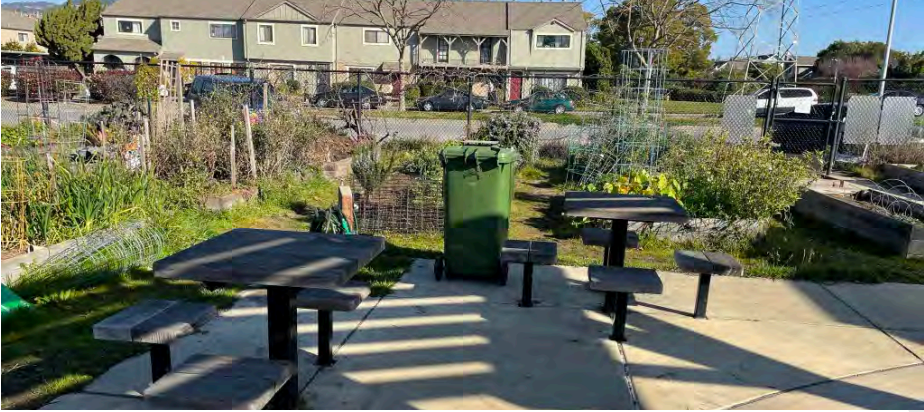
- Accessibility - school age playground does not have accessible entry
- Aging infrastructure - asphalt basketball court has significant cracking, drainage issues at school age playground

ESTIMATED MAINTENANCE

- Standard maintenance – weed abatement, irrigation, trash, blowing
- Court surface maintenance – soil erosion from adjacent sloped landscaping
- Bathroom cleaning and maintenance

¹ San Rafael General Plan 2040

CANAL COMMUNITY GARDEN



CANAL COMMUNITY GARDEN

LOCATION: 5 Windward Way

SIZE: 0.35 acres¹

PARK TYPE: Special Use Park¹

HISTORY

- 1984 – Site deeded to City by the San Rafael Sanitary District
- 2007 – Site selected for displaced community garden, previously at Albert J. Boro Community Center
- 2010 – Partnership between Canal Alliance and Trust for Public Land (TPL) for concept design and program operation
- 2013 – Constructed
- 2017 – Canal Alliance requests that the City takes over full operations of the community garden

CURRENT CONDITION

Poor Fair Good **Excellent**

INVENTORY

AMENITIES	92 raised gardens beds - 32 full plots, 48 half plots, 12 ADA accessible raised plots
	Paved paths – concrete, decomposed granite
FURNISHINGS	Arbor
	Benches
	Bike parking
	Composting bins
	Entry sign
	Picnic tables
FACILITIES	Greenhouse
	Storage/Tool shed

RECREATION PROVIDED

- San Rafael residents apply for garden plots and pay for privileges on an annual basis with no time limit of keeping the plot – there is a current waiting list to join the Canal Community Garden
- Community-based individuals and groups program and use the garden

CONSTRAINTS

- Waitlist to join the Canal Community Garden

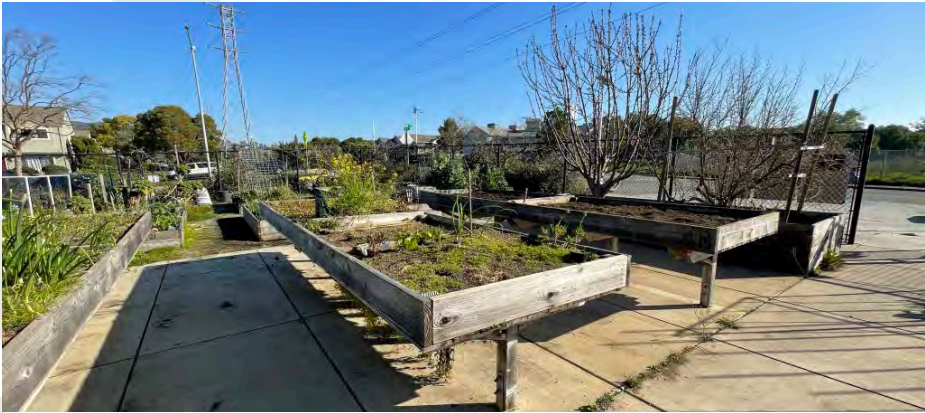
ESTIMATED MAINTENANCE

- City staff maintain only water and irrigation; recreation division contracts for additional maintenance needs

ADDITIONAL OBSERVATIONS

- The Canal Community Garden is a valuable community, outdoor space in the Canal neighborhood
- There is some partnership for maintenance and restroom access with the neighboring Picante restaurant
- The Canal Community Garden was formed in partnership with the Canal Alliance, Canal community, and Trust for Public Lands

¹ San Rafael General Plan 2040



FALKIRK CULTURAL CENTER GROUNDS

LOCATION: 1408 Mission Avenue

SIZE: 3.6 Acres¹

PARK TYPE: Special Use Park¹

HISTORY

- 1888 – Home and grounds constructed
- 1974 – Purchased by City of San Rafael
- 1995 – Site Development Master Plan for Falkirk Cultural Center
- 2009 – City of San Rafael and Regents of the University of California entered formal agreement for Marin Master Gardeners to access grounds and landscape facilities – created Succulent and Mediterranean Gardens
- 2012 - City of San Rafael and Regents of the University of California entered formal agreement for Marin Master Gardeners to perform installations, maintain landscape improvements, and provide public programming

CURRENT CONDITION

Poor Fair **Good** Excellent

INVENTORY

AMENITIES	Grass lawn
	Demonstration gardens – Succulent Garden, Mediterranean Garden
	Water feature/pond
	Wedding and event venues – Artificial Turf Wedding Lawn, Rose Garden
FURNISHINGS	Benches, seating
	Interpretive signage
FACILITIES	Falkirk Cultural Center
	Greenhouse

RECREATION PROVIDED

- Passive and active recreation - venue grounds are rented for private events as well as City programming, primarily focused in the arts

CONSTRAINTS

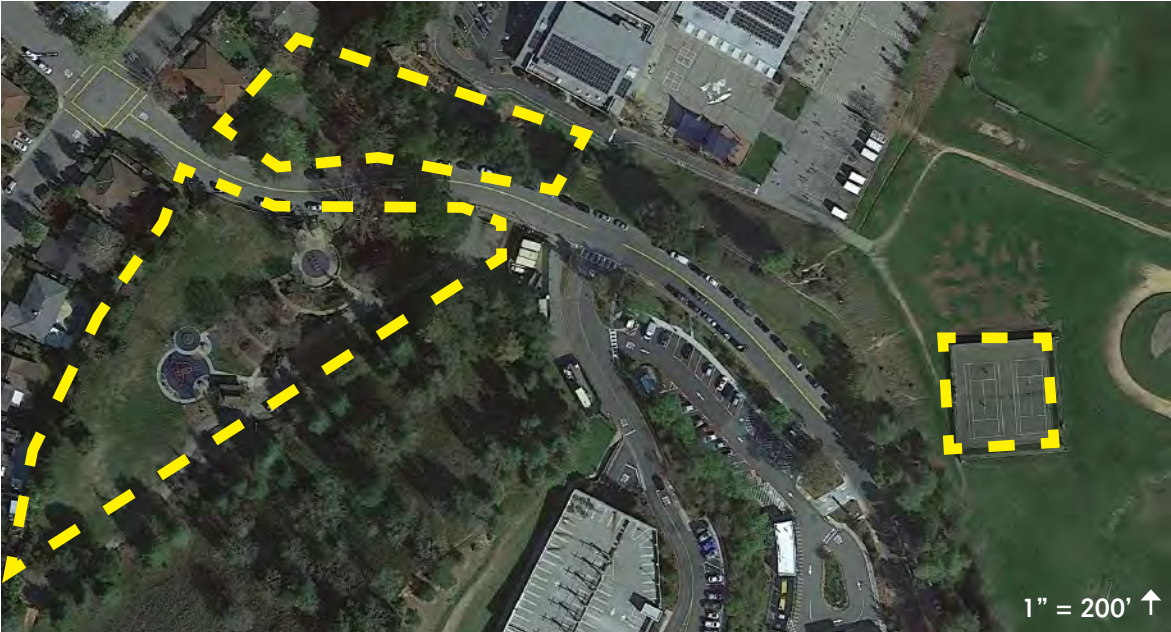
- Accessibility - ADA access to 2nd floor is limited to an exterior, ramped entrance. No interior, ADA access to 2nd floor
- Aging infrastructure - aged irrigation system leaks and poor site drainage
- Adjacent open space – grounds are not fenced with continuous access to adjacent open space with homeless encampments reported
- Mature trees - aging trees require attention for health and safety

ESTIMATED MAINTENANCE

- City maintains only the lawn and weed abatement
- Shrub maintenance around building
- Litter removal and clean-up of homeless debris
- Blowing/cleaning of deck, entryways, and other hard surfaces

¹ San Rafael General Plan 2040

FREITAS PARK



FREITAS PARK

LOCATION: 371 Montecillo Road

SIZE: 2.7 acres¹

PARK TYPE: Neighborhood Park¹

HISTORY

- Construction date unknown – early 1960s based on adjacent development
- 1973 – City enters into agreement with the Miller Creek (formerly Dixie) School District for the construction and operation of the tennis courts
- 1999 – Renovations for accessibility completed
- 2010 – Design for Freitas Park Renovation Project Phase II (play area) completed
- 2011 – New play area constructed

CURRENT CONDITION

Poor Fair **Good** Excellent

INVENTORY

AMENITIES	Grass lawn
	Paved paths – concrete and asphalt
	Playground – school age
	Splash pad – school age and tot age
	Tennis courts (2), lit
FURNISHINGS	Benches
	Bike parking
	Chess tables
	Drinking fountains
	Park sign
	Picnic tables
	Shade structure
	Trash receptacles

FACILITIES	Restroom (2)
------------	--------------

RECREATION PROVIDED

- Passive play and recreation - playground, chess tables, splash pad, picnic tables, benches, tennis courts

CONSTRAINTS

- Location of tennis courts is removed from park with limited access from the park and road.
- Undesirable activities - Location near Terra Linda High School attracts illicit behavior
 - Graffiti; vandalism of furnishings and trash receptacles; tunnel connecting park to Mark Day School attracts loitering; park is set back from street with low visibility
- Water use - splash pad may be open from May through October but currently closed due to drought
- Limited site parking - especially difficult for tennis users

ESTIMATED MAINTENANCE

- Standard maintenance – lawn, weed abatement, irrigation, trash, blowing
- Vandalism – graffiti removal, furnishings repair
- Bathroom cleaning and maintenance

ADDITIONAL OBSERVATIONS

- Freitas Park is divided by Montecillo Road
 - To the north of Montecillo is a portion of the park that formerly held a children’s play area, now removed. Also, to the north of Montecillo Road, across from the Kaiser Permanente San Rafael Medical Center, are the Freitas tennis courts. South of Montecillo, is the more active portion of Freitas Park with picnic and playground

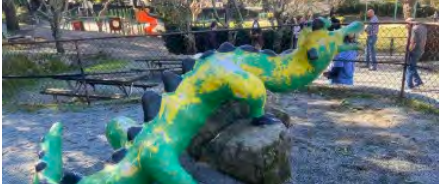
- South part of park has significant elevation change – stairs and an accessible ramp provide access from the lower entrance to the upper restroom and playground
- Some original design features remain with an east-Asian aesthetic of accent wood, Zen Garden sculptures, and painted pergolas
- Painted ceramic tiles from youth events are featured in and around the park
- Popular lunch spot for Kaiser employees and Terra Linda High School students
- Bio-preventative pest management practices have been implemented through the installation of raptor resting post and owl box

¹ *San Rafael General Plan 2040*

DRAFT

THIS PAGE IS INTENTIONALLY LEFT BLANK

DRAFT



GERSTLE PARK

LOCATION: 239 San Rafael Avenue

SIZE: 6.0 Acres¹

PARK TYPE: Neighborhood Park¹

HISTORY

- 1882 – Gerstle family purchase and develop property
- 1930 – Gerstle family donates park to the City of San Rafael
- 2003 - Tot lot and restroom renovation

CURRENT CONDITION

Poor **Fair** Good Excellent

INVENTORY

AMENITIES	Basketball court - full
	Grass lawns
	Paved paths – concrete and asphalt
	Playground – school and tot age
	Tennis court (1), with pickleball striping – closed
FURNISHINGS	Arbor (2)
	Benches
	Drinking fountains
	Park sign
	Picnic tables – (3) reservable areas, including Redwood Grove
	Trash receptacles
FACILITIES	Irrigation control shed with historic fire trucks
	Pit toilet (2) - closed
	Restroom (3)
	Storage shed (2)
	Water tank and well

RECREATION PROVIDED

- Passive play and recreation – playground, picnic areas and rentals, grass lawn, basketball
- City occasionally programs park for outdoor recreation programs – Movies in the Park

CONSTRAINTS

- Accessibility - no ADA accessible route to tennis court, trails and pathways are not consistently accessible
- Aging infrastructure – tennis courts need to be resurfaced to be useable, poor electrical and lighting at Redwood Grove, storage sheds roof failure, pit toilets closed to public, drinking fountains out of order
- Homelessness and safety - homeless encampments and transients have occupied park (key is required at upper restrooms for access with picnic reservations), tennis court’s location away from view attracts unwanted uses, graffiti, and vandalism
- Mature trees - aging trees require attention for health and safety

ESTIMATED MAINTENANCE

- Standard maintenance – lawn, weed abatement, irrigation, trash, blowing
- Vandalism – graffiti removal, furnishings repair, etc.
- Bathroom cleaning and maintenance

ADDITIONAL OBSERVATIONS

- Gerstle Park neighborhood community is invested in Gerstle Park’s improvement and programming
- Park landscape features include rare and unique heritage trees and shrubs - Empress tree, Camperdown Elm, and a Cockspur Coral Tree. However, as species fail, they are not replaced with originally planted species – changing landscape.

- Some tension exists between park users and park users with off-leash dogs - lawn is popular for dog owners

¹ *San Rafael General Plan 2040*

DRAFT

THIS PAGE IS INTENTIONALLY LEFT BLANK

DRAFT

HILLVIEW PARK



HILLVIEW PARK

LOCATION: Manuel T. Freitas Parkway at Las Pavadas Avenue

SIZE: 0.3 Acres¹

PARK TYPE: Pocket Park¹

HISTORY

- Unknown construction date – late 1950s or early 1960s based on adjacent developments

CURRENT CONDITION

Poor Fair Good **Excellent**

INVENTORY

AMENITIES	Grass lawn
	Paved path – concrete
	Park sign
FURNISHINGS	Arbor
	Benches
	Drinking fountain
	Trash receptacle

RECREATION PROVIDED

- Passive recreation – seating and pathway

CONSTRAINTS

- Long roadway frontage
- Limited parking support park programming
- No accessible path to the seating area

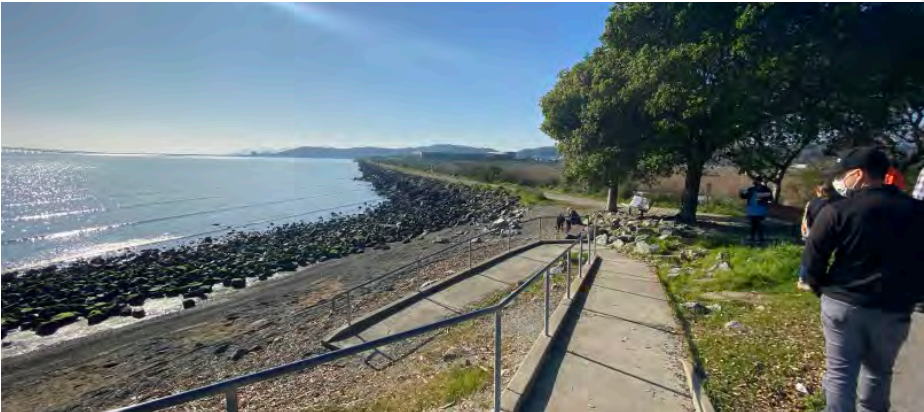
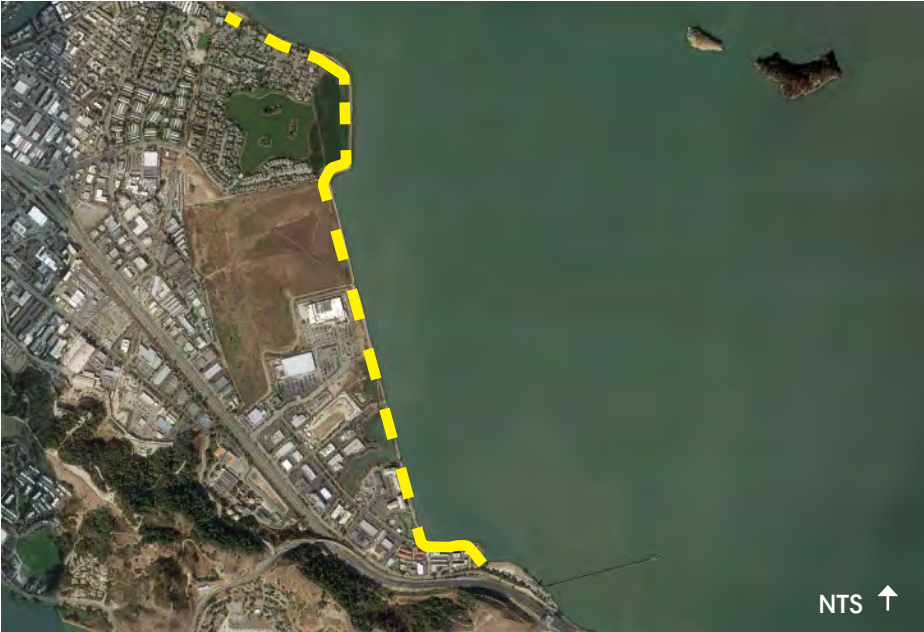
ESTIMATED MAINTENANCE

- Typical maintenance – lawn, irrigation, trash

ADDITIONAL OBSERVATIONS

- Park appears recently renovated with new benches and arbor

¹ *San Rafael General Plan 2040*



LOCATION: Baypoint Village Drive at Baypoint Drive

SIZE: 23.3 Acres¹

PARK TYPE: Special Use Park¹

HISTORY

- 1989 – San Rafael Shoreline Park Master Plan adopted
- 1991 – Shoreline Enhancement Plan

CURRENT CONDITION

Poor Fair **Good** Excellent

INVENTORY

AMENITIES	Paved paths – asphalt, gravel
	Shoreline access
FURNISHINGS	Benches
	Interpretive signage
	Park signs
	Picnic tables
	Trash receptacles
FACILITIES	Restroom

RECREATION PROVIDED

- Passive recreation - biking, walking, shoreline access (fishing, water sports launch, etc.)
- Youth fishing camps have been held at gathering points along the shoreline park

CONSTRAINTS

- Homelessness and safety - restroom currently closed for safety, no lighting, prohibited activities reported such as fire ignition, litter, camping, loitering, and vandalism

- Shoreline location - sensitive shoreline ecosystem and habitat, environmental easements to be considered

ESTIMATED MAINTENANCE

- City annually clears vegetation against private properties, repair fences, and provide weed abatement
- Maintenance of invasive plant species

ADDITIONAL OBSERVATIONS

- Shoreline Park connects to Pickleweed Park and Albert J. Boro Community Center
- Park is often used by residents for passive recreation activities and by local employees during their break periods

¹ *San Rafael General Plan 2040*

PHOTOS TO COME

DRAFT

LOCH LOMOND

LOCATION: 110 Loch Lomond Drive

SIZE: 3.0 Acres¹

PARK TYPE: Neighborhood Park¹

HISTORY

- 2007 – Village at Loch Lomond Marina Master Plan
- 2020 – Constructed

CURRENT CONDITION

Poor Fair Good **Excellent**

INVENTORY

AMENITIES	Grass lawn
	Paved paths – asphalt, concrete, decomposed granite
	Playground – school age
	Shoreline access
FURNISHINGS	Benches
	Bike parking
	Drinking fountains
	Park sign
	Picnic tables
	Trash receptacles
FACILITIES	Restrooms (2)

RECREATION PROVIDED

- Passive play and recreation - playground, picnic tables, benches, shoreline access (fishing, water sports launch, etc.)

CONSTRAINTS

- Shoreline location - sensitive shoreline ecosystem and habitat

ESTIMATED MAINTENANCE

- Standard maintenance – lawn, weed abatement, irrigation, trash
- Bathroom cleaning and maintenance

ADDITIONAL OBSERVATIONS

- Developer-driven park that is privately owned but publicly accessible and partially maintained by the City
- Park has flooding challenges due to existing elevations – Developer is currently planning to raise the finished grades

¹ San Rafael General Plan 2040

LOS RANCHITOS PARK



LOS RANCHITOS PARK

LOCATION: 20 Sequoia Road

SIZE: 3.0 Acres¹

PARK TYPE: Neighborhood Park¹

HISTORY

- 2004 – Constructed as part of the adjacent neighborhood development project

CURRENT CONDITION

Poor Fair Good **Excellent**

INVENTORY

AMENITIES	Basketball court - full
	Grass lawn
	Handball court
	Paved paths – concrete and brick
	Playground – school age and tot lot
FURNISHINGS	Benches
	Bike parking
	Drinking fountains
	Park sign
	Trash receptacles
FACILITIES	Restroom (2)

ESTIMATED MAINTENANCE

- Standard maintenance – lawn, weed abatement, irrigation, trash, blowing
- Cleaning shade structure over playground
- Bathroom cleaning and maintenance

ADDITIONAL OBSERVATIONS

- Restroom uses reclaimed water for toilets
- Los Ranchitos Park is one of the City’s newest parks
- Some tension exists between park users and park users with off-leash dogs - lawn is popular for dog owners

¹ San Rafael General Plan 2040

RECREATION PROVIDED

- Passive play and recreation – playground, grass lawn, sport courts

CONSTRAINTS

- NA

MUNSON PARK



MUNSON PARK

LOCATION: Hickory Lane at Hyacinth Way

SIZE: 1.5 Acres¹

PARK TYPE: Neighborhood Park¹

HISTORY

- Unknown construction date – mid 1950s based on adjacent developments
- 2018 – Pedestrian path realignment and drinking fountain installation

CURRENT CONDITION

Poor Fair **Good** Excellent

INVENTORY

AMENITIES	Grass lawn
	Paved path – concrete
FURNISHINGS	Bench
	Drinking fountain
	Park sign
	Picnic tables
	Trash receptacle

RECREATION PROVIDED

- Passive recreation – picnic table, bench, grass lawn, pathway

CONSTRAINTS

- Long roadway frontage
- Limited parking to support park programming

ESTIMATED MAINTENANCE

- Standard maintenance – lawn, weed abatement, irrigation, trash
- Rodent management

ADDITIONAL OBSERVATIONS

- Neighbors use park for dogs
- Neighbors occasionally use park for volleyball
- There are frequent reports of people defecating in the shrubs – runners, rather than homeless
- Garbage company drives on to lawn to remove trash

¹ *San Rafael General Plan 2040*

OLEANDER PARK



OLEANDER PARK

LOCATION: Oleander Drive at Orange Blossom Lane

SIZE: 2.3 Acres¹

PARK TYPE: Neighborhood Park¹

HISTORY

- Unknown construction date – mid 1950s based on adjacent developments
- 1993 – Playground and swing set installed

CURRENT CONDITION

Poor **Fair** Good Excellent

INVENTORY

AMENITIES	Grass lawn
	Paved paths – asphalt and concrete
	Playground – school and tot age
FURNISHINGS	Benches
	Drinking fountain
	Park sign
	Picnic tables
	Trash receptacles
FACILITIES	Storage shed with irrigation controllers

RECREATION PROVIDED

- Passive play and recreation – playground, picnic tables, lawn

CONSTRAINTS

- Location of play area under Monterey pines causes excessive maintenance to address tree litter

ESTIMATED MAINTENANCE

- Standard maintenance – lawn, weed abatement, irrigation, trash

ADDITIONAL OBSERVATIONS

- According to long-time resident, this park was historically used for informal boxing events
- While on site for inventory, local community members were observed doing group exercise
- Grass lawn is popular with dog owners
- Monterey pine trees removed due to bark beetle pest infestation
- Bio-preventative pest management practices have been implemented through the installation of raptor resting posts and owl boxes

¹ San Rafael General Plan 2040

OLIVER HARTZELL PARK



OLIVER HARTZELL PARK

LOCATION: 62 Golden Hinde Boulevard

SIZE: 0.5 Acres¹

PARK TYPE: Pocket Park¹

HISTORY

- Construction date unknown – late 1980s based on adjacent development

CURRENT CONDITION

Poor Fair Good Excellent

INVENTORY

AMENITIES	Grass lawn
	Paved paths – concrete
	Playground – school age
FURNISHINGS	Benches
	Drinking fountain
	Park sign
	Picnic tables
	Trash receptacles

RECREATION PROVIDED

- Passive play and recreation - playground, picnic tables, benches

CONSTRAINTS

- Accessibility – significant elevation changes limits accessibility to the park

ESTIMATED MAINTENANCE

- Standard maintenance – lawn, weed abatement, irrigation, trash

ADDITIONAL OBSERVATIONS

- Swings at swing frame have been removed
- Occasional complaints of smoking at park

¹ San Rafael General Plan 2040

PEACOCK GAP PARK



PEACOCK GAP PARK

LOCATION: Peacock Drive

SIZE: 4.1 Acres¹

PARK TYPE: Neighborhood Park¹

HISTORY

- 1984 – Park Master Plan approved
- 1984 – McNear family conveys site to City of San Rafael for community park
- 1990 – Constructed

CURRENT CONDITION

Poor **Fair** Good Excellent

INVENTORY

AMENITIES	Grass lawn
	Parcourse
	Paved paths – asphalt, brick, concrete, gravel
	Playground – school and tot age
	Tennis courts (2)
FURNISHINGS	Benches
	Drinking fountains
	Historic memorial plaque - McNear family dedication in 1984
	Park signs
	Picnic tables
	Trash receptacles
FACILITIES	Restroom (2)
	Water tank

RECREATION PROVIDED

- Passive play and recreation – playground, picnic tables, lawn, tennis

CONSTRAINTS

- Tennis courts adjacent to Peacock Gap Golf Club – potential golf ball hazard

ESTIMATED MAINTENANCE

- Standard maintenance – lawn, weed abatement, irrigation, trash, blowing
- Vandalism – graffiti removal, furnishings repair, etc.
- Bathroom cleaning and maintenance

ADDITIONAL OBSERVATIONS

- Park is a heavily used neighborhood park
- Seasonal wetland occurs south of tot age play area
- Lawn is popular for off-leash dogs
- Soccer goals placed in park by local community
- While on site for inventory, local community members were observed picking up trash and doing a group exercise class
- Teens have occasionally driven on to lawn
- Peacock Gap Park has original bricks from McNear family construction efforts at the playground

¹ San Rafael General Plan 2040

PICKLEWEED PARK



PICKLEWEED PARK

LOCATION: 50 Canal Street

SIZE: 17.6 Acres¹

PARK TYPE: Community Park¹

HISTORY

- 1994 – Constructed
- 2001 – Conceptual plan for Pickleweed Community Center
- 2006 – Albert J Boro Community Center (formerly Pickleweed Community Center) renovated
- 2019 – Playground replacement completed
- 2022 – Land and Water Conservation Fund (LWCF) grant consideration for Pickleweed Park Enhancement Project

CURRENT CONDITION

Poor Fair **Good** Excellent

INVENTORY

AMENITIES	Grass lawn
	Paved paths – concrete and asphalt
	Playground – school and tot age
	Sports field – soccer fields (2), baseball backstop
FURNISHINGS	Arbor
	Benches
	Bike parking
	Drinking fountains
	Outdoor food preparation station – sink, grill, counter
	Picnic tables – (1) reservable area
	Trash receptacles
FACILITIES	Albert J. Boro Community Center
	Restroom (2)

RECREATION PROVIDED

- Passive play and recreation – playground, picnic areas
- Sports field rental – soccer, lacrosse, ultimate frisbee, San Rafael Jr. Giants Baseball
- Programming from Albert J. Boro Community Center
- City occasionally programs park for outdoor recreation programs – Movies in the Park, Dia de los Muertos

CONSTRAINTS

- Sport fields maintenance - fields closed approximately 6 months per year, mid-December through mid-June, for turf restoration
- Undesirable activities and safety – gambling, gang presence, vandalism, graffiti, northern portion of park has been used for homeless camping
- Shoreline location – sensitive shoreline habitat
- Severely limited parking

ESTIMATED MAINTENANCE

- Standard maintenance – lawn, weed abatement, irrigation, trash, blowing
- Vandalism – graffiti removal, furnishings repair, etc.
- Sport field maintenance – turf restoration
- Restroom maintenance – high frequency restroom use

ADDITIONAL OBSERVATIONS

- Pickleweed Park has the only City-owned sports field with soccer use
- Local community members visit park for use of the public restrooms
- Sports field has been used for off-leash dogs

¹ San Rafael General Plan 2040

RIVIERA PARK



RIVIERA PARK

LOCATION: 452 Riviera Drive

SIZE: 0.3 Acres¹

PARK TYPE: Pocket Park¹

HISTORY

- Unknown construction date – mid 1980s based on adjacent developments
- 1984 – Playground installed
- 2020 – Sidewalk and pathways improved through Sidewalk Repair Program

CURRENT CONDITION

Poor **Fair** Good Excellent

INVENTORY

AMENITIES	Grass lawn
	Paved paths – concrete
	Playground – school and tot age
FURNISHINGS	Benches
	Drinking fountain
	Picnic tables
	Trash receptacles

RECREATION PROVIDED

- Passive play and recreation – playground, picnic tables, benches

CONSTRAINTS

- Isolated location

ESTIMATED MAINTENANCE

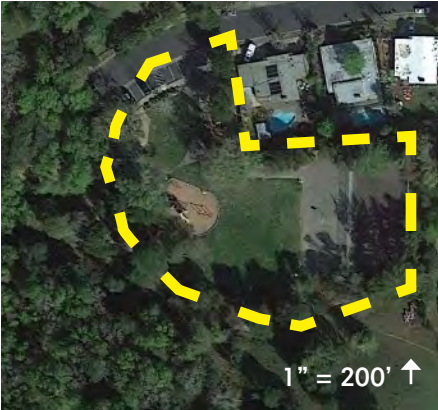
- Standard maintenance – lawn, weed abatement, irrigation, trash

ADDITIONAL OBSERVATIONS

- Boulders line tunnel as play feature
- Poplar trees removed – heaving of concrete from roots, invasive

¹ San Rafael General Plan 2040

SANTA MARGARITA VALLEY PARK



SANTA MARGARITA VALLEY PARK

LOCATION: 100 De La Guerra Avenue

SIZE: 5.0 Acres¹

PARK TYPE: Neighborhood Park¹

HISTORY

- Construction date unknown – early 1960s based on adjacent development
- 2003 – School and tot age play structures installed
- 2007 – Restroom renovated

CURRENT CONDITION

Poor **Fair** Good Excellent

INVENTORY

AMENITIES	Basketball court - full
	Grass lawn
	Paved paths – asphalt, decomposed granite
	Playground – school and tot age
	Tennis court (1) - not usable for tennis
FURNISHINGS	Benches
	Drinking fountain
	Park sign
	Picnic tables – (1) reservable area
	Trash receptacles
FACILITIES	Restroom (2)

RECREATION PROVIDED

- Passive play and recreation – playground, picnic areas, basketball court, tennis court - not usable for tennis
- City occasionally programs park for outdoor recreation programs

CONSTRAINTS

- Location is removed and/or hidden from San Rafael community – undesirable activities such as vandalism, loitering, and graffiti

ESTIMATED MAINTENANCE

- Standard maintenance – lawn, weed abatement, irrigation, trash
- Vandalism – graffiti removal, furnishings repair, etc., particularly at restroom
- Bathroom cleaning and maintenance

ADDITIONAL OBSERVATIONS

- Creek runs along north park entry – accessible with wooden pedestrian bridge
- Park is connected to an informal network of open space trails to the southwest
- Existing tennis court is occasionally used as an off-leash dog run
- While on site for the inventory a group of young adults was observed drinking at a picnic area

¹ *San Rafael General Plan 2040*

SUN VALLEY PARK



SUN VALLEY PARK

LOCATION: 144 Solano Street

SIZE: 5.0 Acres¹

PARK TYPE: Neighborhood Park¹

HISTORY

- 1993 – Playground equipment replaced
- 2007 – Restrooms and picnic area renovated
- 2016 – Basketball court repaved
- 2023 (planned) – Playground equipment replaced, and accessible path of travel improved

CURRENT CONDITION

Poor Fair **Good** Excellent

INVENTORY

AMENITIES	Basketball court - full
	Grass lawn
	Paved paths – asphalt, concrete
	Playground – school and tot age
FURNISHINGS	Benches
	Drinking fountains
	Handprint art wall
	Park sign
	Picnic tables – (1) reservable areas
	Shade structure (2)
	Trash receptacles
FACILITIES	Restroom (2)

RECREATION PROVIDED

- Passive play and recreation – playground, picnic areas, lawn
- City occasionally programs park for outdoor recreation programs – Movies in the Park

CONSTRAINTS

- Park is popular for off-leash dog use - tensions between park users and off-leash dog owners
- Limited access for parks maintenance equipment

ESTIMATED MAINTENANCE

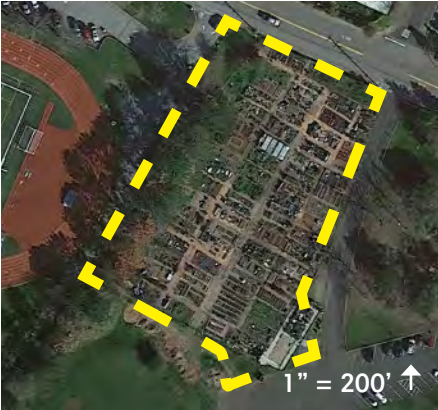
- Standard maintenance – lawn, weed abatement, irrigation, trash, blowing
- Graffiti removal at restroom
- Restroom cleaning and maintenance

ADDITIONAL OBSERVATIONS

- Neighbors have reports debris being thrown from the wooden gazebo in the upper terrace area onto the adjacent homes

¹ San Rafael General Plan 2040

TERRA LINDA COMMUNITY GARDEN



TERRA LINDA COMMUNITY GARDEN

LOCATION: 380 Nova Albion Way

SIZE: 1.0 Acres¹

PARK TYPE: Special Use Park¹

HISTORY

- 1975 – San Rafael leases School District (former Dixie School District) land at former Nova Albion High School site
- 2010 – Accessible plots constructed with concrete path of travel

CURRENT CONDITION

Poor Fair **Good** Excellent

INVENTORY

AMENITIES	70 raised gardens beds - 64 full plots (450 sf), 6 half plots (225 sf), 2 ADA plots (full)
	Paved ADA path accessing 2 plots – concrete
FURNISHINGS	Green Waste bins
	Entry sign

RECREATION PROVIDED

- San Rafael residents apply for garden plots and pay for privileges on an annual basis , with no time limit of keeping the plot – current waiting list to join the Terra Linda Community Garden
- Community-based individuals and groups program and use the garden

CONSTRAINTS

- Waitlist to join the Terra Linda Community Garden
- No communal storage area – gardeners provide their own tools and storage

ESTIMATED MAINTENANCE

- City pays for water and maintains irrigation and maintenance

ADDITIONAL OBSERVATIONS

- Terra Linda Community Garden is at capacity for user plots
- Terra Linda Community Garden is older than Canal Community Garden, with less amenities
- Terra Linda Community Garden full plots are 9x larger than the full plots at the Canal Community Garden

¹ San Rafael General Plan 2040

TERRA LINDA PARK



TERRA LINDA PARK

LOCATION: 670 Del Ganado Road

SIZE: 2.9 Acres¹

PARK TYPE: Community Park¹

HISTORY

- Unknown construction date – mid 1950s based on adjacent developments
- 1998 – Playground installation
- 2002 – Terra Linda Pool Rebuild Project

CURRENT CONDITION

Poor **Fair** Good Excellent

INVENTORY

AMENITIES	Basketball court – (1) full court
	Grass lawn
	Paved paths – concrete and asphalt
	Playground – school and tot age
	Stage
FURNISHINGS	Benches
	Drinking fountains
	Picnic tables – (2) reservable areas
	Trash receptacles
FACILITIES	Terra Linda Community Center and Pool

RECREATION PROVIDED

- Passive play and recreation – playground, picnic areas, grass lawn, basketball
- Programming from Terra Linda Community Center and Pool
- Park and playground are shared with neighboring Montessori de Terra Linda School for recess and physical education
- City programs park for outdoor recreation programs – Movies in the Park, summer camps

CONSTRAINTS

- Intensive community use – frequent maintenance

ESTIMATED MAINTENANCE

- Standard maintenance – lawn, weed abatement, irrigation, trash
- Vandalism – graffiti removal, furnishings repair, etc.
- Daily pool monitoring and maintenance

ADDITIONAL OBSERVATIONS

- Terra Linda Park is popular location for local teens and middle schoolers – frequent skateboarding and biking
- Outdoor stage is underused and attracts skateboarding and biking – contributes to heavy wear
- Playground has unique nature play theme with boulders
- Bio-preventative pest management practices have been implemented through the installation of owl boxes

¹ San Rafael General Plan 2040

VICTOR JONES PARK



VICTOR JONES PARK

LOCATION: Robinhood Drive

SIZE: 5.9 Acres¹

PARK TYPE: Neighborhood Park¹

HISTORY

- 1961 – Constructed
- 2008 – Conceptual Master Plan
- 2018 – New playground installed (Scott McNear Children’s Playground) as portion of Conceptual Master Plan

CURRENT CONDITION

Poor **Fair** Good Excellent

INVENTORY

AMENITIES	Baseball field with backstop
	Basketball courts – (2) full
	Grass lawn
	Paved paths – asphalt, concrete
	Playground – school and tot age
	Shuffleboard court
FURNISHINGS	Arbor
	Benches
	Drinking fountains
	Park signs
	Picnic tables – (2) reservable areas
	Trash receptacles
FACILITIES	Restroom
	Water tank

RECREATION PROVIDED

- Passive play and recreation – playground, picnic tables, lawn, basketball courts
- City occasionally programs park for outdoor recreation programs – Movies in the Park, T-Ball Rentals, etc.

CONSTRAINTS

- Accessibility - no ADA accessible route from lower park (south) to upper park (north), asphalt pavement at lower park is cracked
- Creek runs along west side of park – seasonal flooding in winter months of creek portions that are not undergrounded, exacerbated by litter and debris

ESTIMATED MAINTENANCE

- Standard maintenance – lawn, weed abatement, irrigation, trash, blowing
- Restroom cleaning and maintenance

ADDITIONAL OBSERVATIONS

- Lawn is popular for off-leash dogs
- Previous incidents of Sudden Oak Death in the park’s oak trees
- Poles for volleyball court at lower park have been removed, previously adjacent to basketball courts

¹ *San Rafael General Plan 2040*