



City of San Rafael
**CITYWIDE PARKS
AND RECREATION
MASTER PLAN**

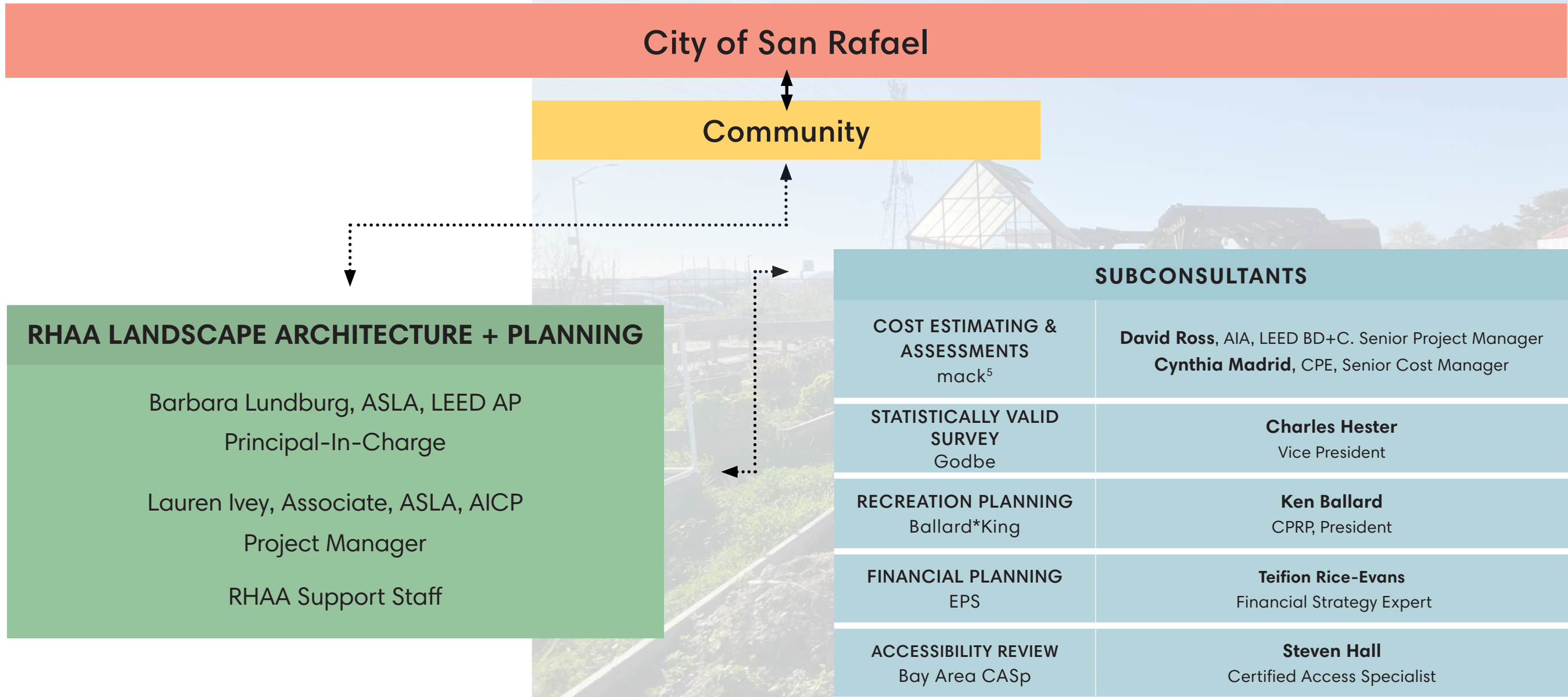
Community Meeting #2
September 8th, 2022



AGENDA

- I. Our Team
- II. Needs Assessment
- III. Recommendation
Prioritization
- IV. Questions & Discussion
- V. Next Steps

Our Team



City of San Rafael

Community

RHA LANDSCAPE ARCHITECTURE + PLANNING

Barbara Lundburg, ASLA, LEED AP
Principal-In-Charge

Lauren Ivey, Associate, ASLA, AICP
Project Manager

RHA Support Staff

SUBCONSULTANTS

COST ESTIMATING & ASSESSMENTS
mack⁵

David Ross, AIA, LEED BD+C, Senior Project Manager
Cynthia Madrid, CPE, Senior Cost Manager

STATISTICALLY VALID SURVEY
Godbe

Charles Hester
Vice President

RECREATION PLANNING
Ballard*King

Ken Ballard
CPRP, President

FINANCIAL PLANNING
EPS

Teifion Rice-Evans
Financial Strategy Expert

ACCESSIBILITY REVIEW
Bay Area CASp

Steven Hall
Certified Access Specialist



Needs Assessment



Boyd Memorial Park

Community Outreach

- Statistically Valid Survey

March 7th - March 10th

575 Responses - 559 English, 16 Spanish

- Parks and Recreation Questionnaire

March 30th - May 31st

*1,131 Responses - 1,046 English, 84 Spanish,
1 Vietnamese*



CITY OF SAN RAFAEL
2022 Park & Recreation Needs Assessment Survey

Topline Report
n=575
22 minutes
Residents / Registered Voters Hybrid Sample
Languages: English (n=559) & Spanish (n=16)

March 20, 2022

SAN RAFAEL
THE CITY WITH A MISSION

San Rafael Citywide Parks and Recreation Questionnaire

Parks and Recreation Questionnaire

The City of San Rafael is developing a Citywide Parks and Recreation Master Plan to shape the future of our parks and recreation. By creating a Master Plan, we will have a guide to further develop our parks and recreational programs, create and maintain funding, and set priorities for the future. Please take 15 minutes to complete this brief questionnaire so we know how you enjoy the City's parks, facilities, and recreational programs, and what you would like to see to improve your experience. By including your feedback and input in the planning process, we'll be able to further promote the quality of life for San Rafael residents.

Thank you for your participation in this questionnaire!

City of San Rafael

[www.godberes.com](#)
Northern California
1220 Howard Avenue
Burlingame, CA 94010
Nevada
59 Damonte Ranch
Reno, NV 89521

Next

Community Outreach

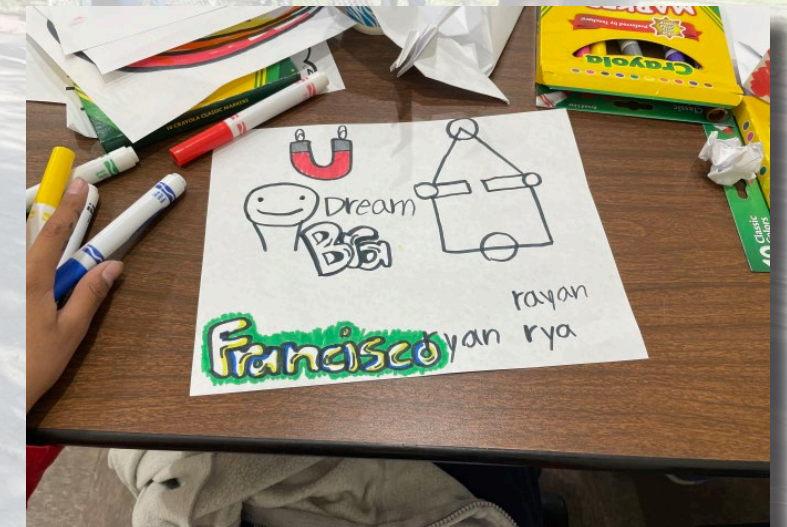
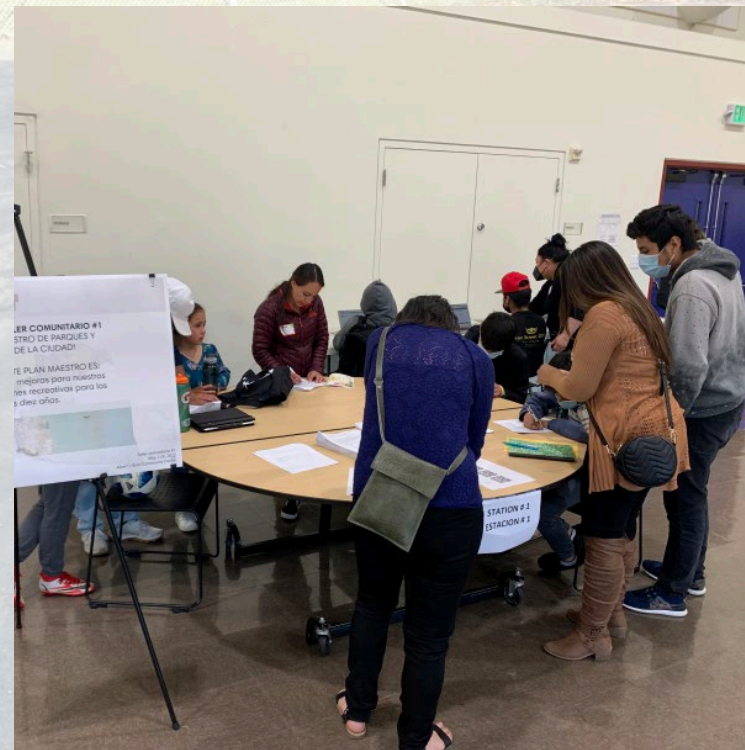
- Community Workshop #1

March 30th - San Rafael Community Center

April 28th - Terra Linda Community Center

May 5th - Zoom/Online

May 11th - Albert J. Boro Community Center



1. What do you like?

- closeness to neighborhood
- plentiful
- tree growth + beauty, established
- variety of programming
- tire swings + climbing structures
- athletic facilities (courts)
- community volunteer opportunities (Master Gardeners @ Falk)
- Peacock Gap Park, variety, beauty, playground, nice
- basketball court (Gerstl)
- reservable for parties + events
- feel safe around the parks + grounds

2. What improvements?

- Middle school & Adult High School
- Students need more activities, facilities (Skatepark)
- Programming adjacent to Dan
- Expand Terra Linda Community
- ↑ Maintenance of Parks/pools
- Add restroom at Terra Linda
- More field space / Better maintenance turf areas
- Parking issues at Boro Comm.
- Adding lighting to sport fields (Sh)
- Re-surface tennis courts (Pea Gers)

What Do You Like

Gr Park Playground	Pickleball Pickleball
Tennis Cts	Able to reserve Parks for Parks
County/city	Trees - Shade
TL Pool	Clean Restrooms in Parks
Classes	Upper Bayl Pk
Camps	Pk's access to trails
Picnic Area	Dragon
Free Parking	Park Benches
Variety in Parks	Movies in the PK
So Many Parks	Parkfest
Peacock Pk	
L.L. Marina	
Shoreline Pk Trail	

Community Outreach

- Findings

Satisfaction with existing supply of, and access to, parks and recreation facilities and programs, but many community members are unaware of the City's programmatic offerings.

*Desire to **update and improve the City's existing park amenities**, particularly to modernize playgrounds and recreation amenities such as benches, picnic tables, etc. as well as repairing failing infrastructure.*

*Desire for **improved maintenance and cleanliness** of the City's parks.*

*Pedestrian access throughout the City's recreation network – **walking is a priority**.*

*Support **self-directed recreation** activities.*

Community Outreach

- Findings

Most frequented parks, in order of popularity*

Gerstle Park
Sun Valley Park
Terra Linda Park
Peacock Gap Park
Albert Park

Most frequented recreation facilities, in order of popularity*

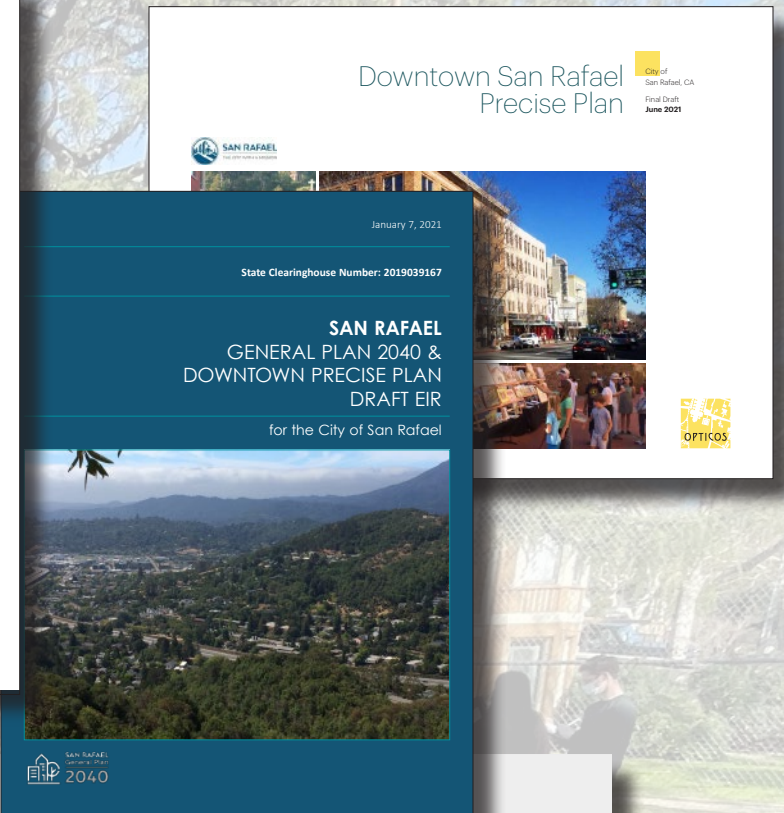
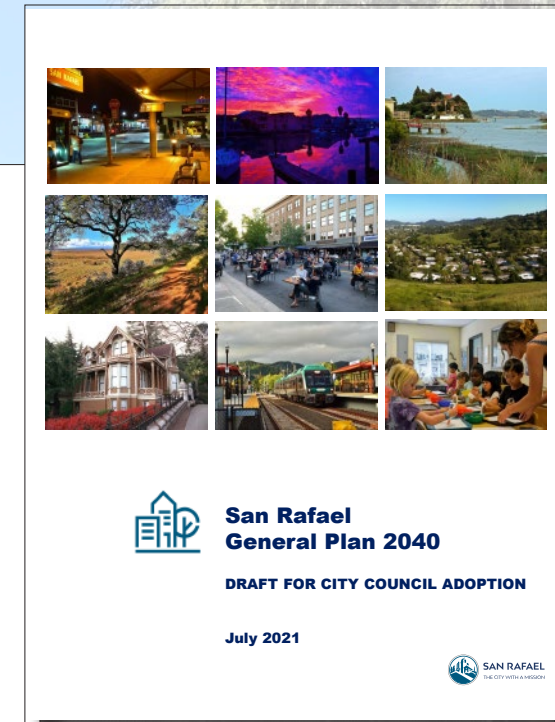
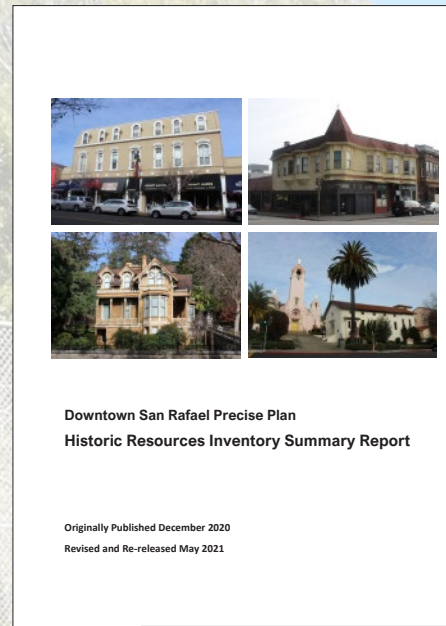
Terra Linda Community Center and Pool House
San Rafael Community Center
None
Albert J. Boro Community Center
Falkirk Cultural Center

*Slight variance in order of popularity between SVS and PRQ, but top sites are similar



Document Review

- *San Rafael General Plan 2040, 2021*
- *Downtown Precise Plan, 2021*
- *Climate Change Action Plan, 2019*
- *San Rafael Bicycle and Pedestrian Master Plan, 2018*
- *Canalfront Conceptual Design Plan and Guidelines, 2009*



San Rafael Demographics Summary

Population

With 58,775 people, San Rafael is the 161st most populated city in the state of California out of 1,490 cities. But watch out, San Rafael, because [Arcadia](#) with 58,152 people and [Huntington Park](#) with 58,353 people are right behind you.

Race & Ethnicity

The largest San Rafael racial/ethnic groups are White (57.0%) followed by Hispanic (31.0%) and Asian (6.7%).

Median Income

In 2019, the median household income of San Rafael households was \$91,742. San Rafael households made slightly more than [San Juan Capistrano](#) households (\$91,600) and [Vandenberg Village](#) households (\$91,618). However, 6.2% of San Rafael families live in poverty.

Median Age

The median age for San Rafael residents is 41.1 years young.

San Rafael Population

Year	Population
2011	58,250
2012	58,450
2013	59,000
2014	59,150
2015	59,100
2016	58,950
2017	58,850
2018	58,750
2019	58,775

Sources: United States Census Bureau, 2019 American Community Survey 5-Year Estimates, U.S. Census Bureau, American Community Survey Office, Web, 10 December 2020, | United States Census Bureau, Annual Estimates of the Resident Population: April 1, 2010 to July 1, 2019, U.S. Census Bureau, Population Division, Web, May 2020, <http://www.census.gov/>, [Check out our FAQs](#) for more details.

Parks Inventory

- Many parks constructed in mid-20th century (60-70yrs old)
- 3 parks originally built in the 19th century (close to 100yrs old)
- Needs include:

Updated playground amenities per code and accessibility

Renovated sport courts

Improved signage

Infrastructure repairs and replacement

Riviera Park



Bret Harte Park



Oleander Park



Santa Margarita Park



Gerstle Park



Boyd Memorial Park



Boyd Memorial Park



Oliver Hartzell Park



Facilities Inventory

- Large range in age, construction type, and recreation provided
- Common maintenance and repair issues include:

Water intrusion

Aging mechanical equipment

Outdated electrical distribution

Door and window replacement

Moveable partition repairs

Painting and finishes

Exterior wood deck replacements

Albert J. Boro Community Center



Falkirk Cultural Center



San Rafael Community Center



Terra Linda Community Center



CASp Assessment

Major Accessibility Needs	Minor Accessibility Needs	Minor Accessibility Needs with Maintenance Improvements
Beach Park	Albert Park and Stadium	Arbor Park
Freitas Park 'Annex'	Canal Community Garden	Bernard Hoffman Field/Park
Oliver Hartzell Park	Freitas Park	Boyd Memorial Park
	Los Ranchitos Park	Bret Harte Park
	Pickleweed Park	Falkirk Cultural Center Grounds
	Sun Valley Park	Gerstle Park
		Hillview Park
		Jean and John Starkweather Shoreline Park
		Munson Park
		Oleander Park
		Peacock Gap Park
		Riviera Park
	Santa Margarita Park	
	Terra Linda Community Garden	
	Terra Linda Park	
	Victor Jones Park	

Recreation Assessment

- Challenges identified:

Aging facilities with limited space, parking, sport fields, and joint-use agreements

Program growth and long-range program planning

Deferred maintenance impacts program opportunities - sport fields, sport courts, etc

Asset management planning to track lifecycle costs

Staffing and funding

IMPORTANT

ONLINE REGISTRATION
www.cityofsanrafael.org/recreation
Begins at 9:00am on Wednesday, August 10

WALK-IN REGISTRATION
Begins on Wednesday, August 17

Our Activities Guide can also be viewed online at
www.cityofsanrafael.org/recreation

ACCESS & INCLUSION
The City of San Rafael invites people with and without disabilities to participate in our programs. If you have any special needs that require specific accommodations, please contact our Library & Recreation Department at (415) 485-3333.

Community Centers

Albert J. Boro Community Center
50 Canal Street
(415) 485-3077
abc.counter@cityofsanrafael.org

San Rafael Community Center
618 B Street
(415) 485-3333
recreation@cityofsanrafael.org

Terra Linda Community Center & Pool
670 Del Ganado Road
Office: (415) 485-3344
Pool: (415) 485-3346
terra.linda.pool@cityofsanrafael.org

Hamilton Pool
203 El Borrito Road, Novato
Office: (415) 485-3344
Pool: (415) 883-7126
terra.linda.pool@cityofsanrafael.org

Cultural Center

Falkirk Cultural Center
1408 Mission Avenue
(415) 485-3328
falkirk@cityofsanrafael.org

Wh...

- 4
- 6
- 6
- 7-8
- 9-14
- 16-21
- 22-24 **Older Adults**
- 25-26 **Library Events & Activities**
- 27 **Falkirk Cultural Center**
- 28 **San Rafael Parks Map**
- 29 **San Rafael Park Amenities**
- 30 **Picnic Area Rentals**
- 31 **Facility Rentals**
- 32 **How to Register**
- 33 **Activity Registration Form**
- 34 **Coronavirus Waiver Form**
- 35 **Age-Friendly Community**

8 | Youth & Teens | September 2022-February 2023 | Register Today! www.cityofsa

Preschool Programs

Parkside Preschool
51 Albert Park Lane, San Rafael 94901
Director: Jackie Newsom
Phone: 485-3388

Parkside Preschool is a year-round, full-time program, which provides a developmentally appropriate play-based program that focuses on exploration, discovery, and social interaction. The two classrooms are set up with a variety of activity centers: art, science, language arts, library, dramatic play, blocks, and math. Activities are planned and prepared to spark a child's sense of curiosity and wonder. The stimulating and supportive environment, coupled with caring professionals, nurtures a love for learning with an emphasis on problem solving, self-regulation skills, and creativity.

Pickleweed Preschool
40 Canal Street, San Rafael 94901
Director: Maria Verlarde
Phone: 485-3101

Pickleweed Preschool is a state funded, part-day preschool program. Our highly experienced and caring teachers create an environment that offers a range of experiences to encourage and foster children's independence and academic growth. The children begin to develop self-discipline and the ability to concentrate while exercising their choice of materials in various activity centers during work time. Children will participate in small and large group activities to study and explore their expanding world and will learn practical life and social skills through their work and play. All activities and curriculum will encourage children's English Language Development and Acquisition.



WE
Make a
City of
To learn
contact

Adult

Arts and Crafts

TERRA LINDA CERAMICS

Award winning artist, Nadia Tarzi-Saccardi, is the director for the Terra Linda Ceramic Artists program since 2017. Nadia first studied ceramics and sculpture forty years ago in Strasbourg, France and for the last 15 years has been teaching ceramics to adults and children across the Bay Area. She was recently awarded the Best of Marin 2020 and 2021 for Best Art Instructor and Best Art Studio.
Visit: www.terralindaceramicartists.com

Ceramics - Beginner

This class is designed as a prerequisite and as a class for beginners in ceramics. It is also for people who have not done ceramics in many years and need a refresher in techniques. Learn the basic techniques you need to create with clay, such as pinch, slab, drape, and glaze. After this session is completed, if students want to continue taking classes they must sign up for another session of classes. This class is not a repeat class. A \$65 material fee is due to the instructor at the first class and includes a bag of regular clay.

Age: 18Y & Up

Terra Linda Community Center

\$150R/\$165NR

W 5:30pm-8:30pm 9/28-10/26 5705

\$180R/\$198NR

W 5:30pm-8:30pm 11/2-12/14 5723

Ceramics - Advanced & Intermediate

The following classes are not designed for a beginner's level. For the beginner's level class please sign up for the Wednesday evening class. In these classes, expand your coil, slab, drape, push mold, large or small sculpting techniques and let your imagination soar. The instructor provides a class demonstration the second week of each session and individual artistic and technical support is given throughout the session. A \$65 material fee is due to the instructor at the first class and includes a bag of regular clay.

Age: 18Y & Up

Terra Linda Community Center

\$180R/\$198NR

ADVANCED CERAMICS (Requires Instructor Approval)

\$150R/\$165NR

W 9:00am-12:00pm 9/28-10/26 5703

\$180R/\$198NR

W 9:00am-12:00pm 11/2-12/14 5721

\$256R/\$281NR

W 9:00am-12:00pm 1/18-3/15 5807

INTERMEDIATE CERAMICS

\$150R/\$165NR

Tu 6:30pm-9:30pm 9/27-10/25 5691

Th 9:00am-12:00pm 9/29-10/27 5706

Sa 9:00am-12:00pm 10/1-10/29 5709

\$180R/\$198NR

Tu 6:30pm-9:30pm 11/1-12/13 5720

Th 9:00am-12:00pm 11/3-12/15 5724*

Sa 9:00am-12:00pm 11/5-12/17 5726

\$256R/\$281NR

Tu 6:30pm-9:30pm 1/17-3/14 5806

Th 9:00am-12:00pm 1/19-3/16 5810

Sa 9:00am-12:00pm 1/21-3/18 5812

INTERMEDIATE/ADVANCED CERAMICS

\$150R/\$165NR

Tu 9:00am-12:00pm 9/27-10/25 5690

W 1:00pm-4:00pm 9/28-10/26 5704

Th 6:00pm-9:00pm 9/29-10/27 5707

\$180R/\$198NR

Tu 9:00am-12:00pm 11/1-12/13 5719

W 1:00pm-4:00pm 11/2-12/14 5722

Th 6:00pm-9:00pm 11/3-12/15 5725*

\$256R/\$281NR

Tu 9:00am-12:00pm 1/17-3/14 5805

W 1:00pm-4:00pm 1/18-3/15 5808

Th 6:00pm-9:00pm 1/19-3/16 5811

*No class 11/24



Register Today! www.cityofsanrafael.org/recreation • 485-3333 | September 2022-February 2023 | Adults | 15



Recommendation Prioritization



Jean & John Starkweather Shoreline Park

Prioritization Criteria

Health and Safety

Community Priorities

Service Area

General Plan 2040 Guiding Principles

Accessibility

Operational
Efficiency

Included in
Previous Planning

Prioritization Criteria

Health and Safety (5)	Description	Point Allocation
	<i>Public health – sanitation</i>	<i>Maximum of 5 points:</i>
	<i>Physical safety – end of amenity service-life and addressing potential physical hazards</i>	<ul style="list-style-type: none">• 2 points for sanitation and health• 2 points for physical safety• 1 point for urgency
	<i>Urgency – continued repair deferral will lead to amenity closure</i>	

Prioritization Criteria

PRIORITY PARK IMPROVEMENTS

Community Priorities (3)	Description	Point Allocation
<ul style="list-style-type: none"> • Improved cleanliness including litter maintenance, restroom maintenance, refuse pick-up, playground maintenance, etc. (92%) • Address and/or replace outdated equipment such as benches, playgrounds, barbecues, picnic tables, etc. (89%) • Address infrastructure maintenance i.e., surface improvements (sport courts, picnic areas, pathways, and parking lots, etc.) (87%) • More park amenities such as drinking fountains, shade structures, bike racks, and benches (80%) • Improved landscape maintenance (80%) • Updated irrigation system(s) for efficient water use (77%) • Improved lighting for safety and pathways (72%) • More restrooms in City parks (69%) • Enhanced sports fields to meet demand i.e., lighting, artificial turf, improved maintenance (65%) 	<p><i>Park and Recreation Community Questionnaire – Priority park improvements (combined fairly and very important = 65% or greater)</i></p>	<p><i>Maximum of 3 points:</i></p> <ul style="list-style-type: none"> • <i>0.5 point per community priority area met</i>



Prioritization Criteria

PRIORITY PARK AMENITIES/ACTIVITIES

Community Priorities (3)	Description	Point Allocation
<ul style="list-style-type: none"> • Trails and pathways / walking, hiking jogging (PRC 91%; SVS 82%) • Restrooms (PRC 83%) • Going to a local park/enjoying nature (PRC 83%) • Community events (PRC 76%) • Playgrounds (PRC 75%) • Picnic areas /picnics (PRC 74%; SVS 58%) • Nature and environmental programming i.e., camping, hiking (PRC 71%) • Swimming pools / Swimming (PRC 70%; SVS 55%) • Self-directed activities i.e. outdoor fitness courses, active play areas, and pathways with distance markers (PRC 70%) • Cultural activities i.e. museums, theater programs, art exhibits (PRC 69%; SVS 70%) • Reading (SVS 69%) • Sport courts (PRC 66%) • Fitness i.e., yoga, weightlifting, cardio, dance, etc. (PRC 65%; SVS 57%) • Self-help/wellness (SVS 56%) • Walking or exercising a dog at a dog park area (SVS 53%) 	<p><i>Park and Recreation Community Questionnaire (PRC) – Priority park amenities and activities (combined fairly and very important = 65% or greater); and Statistically Valid Survey (SVS) – Most important activities (combined extremely and very important = 50% or greater)</i></p>	<p><i>Maximum of 3 points:</i></p> <ul style="list-style-type: none"> • <i>0.5 point per community priority area met</i>

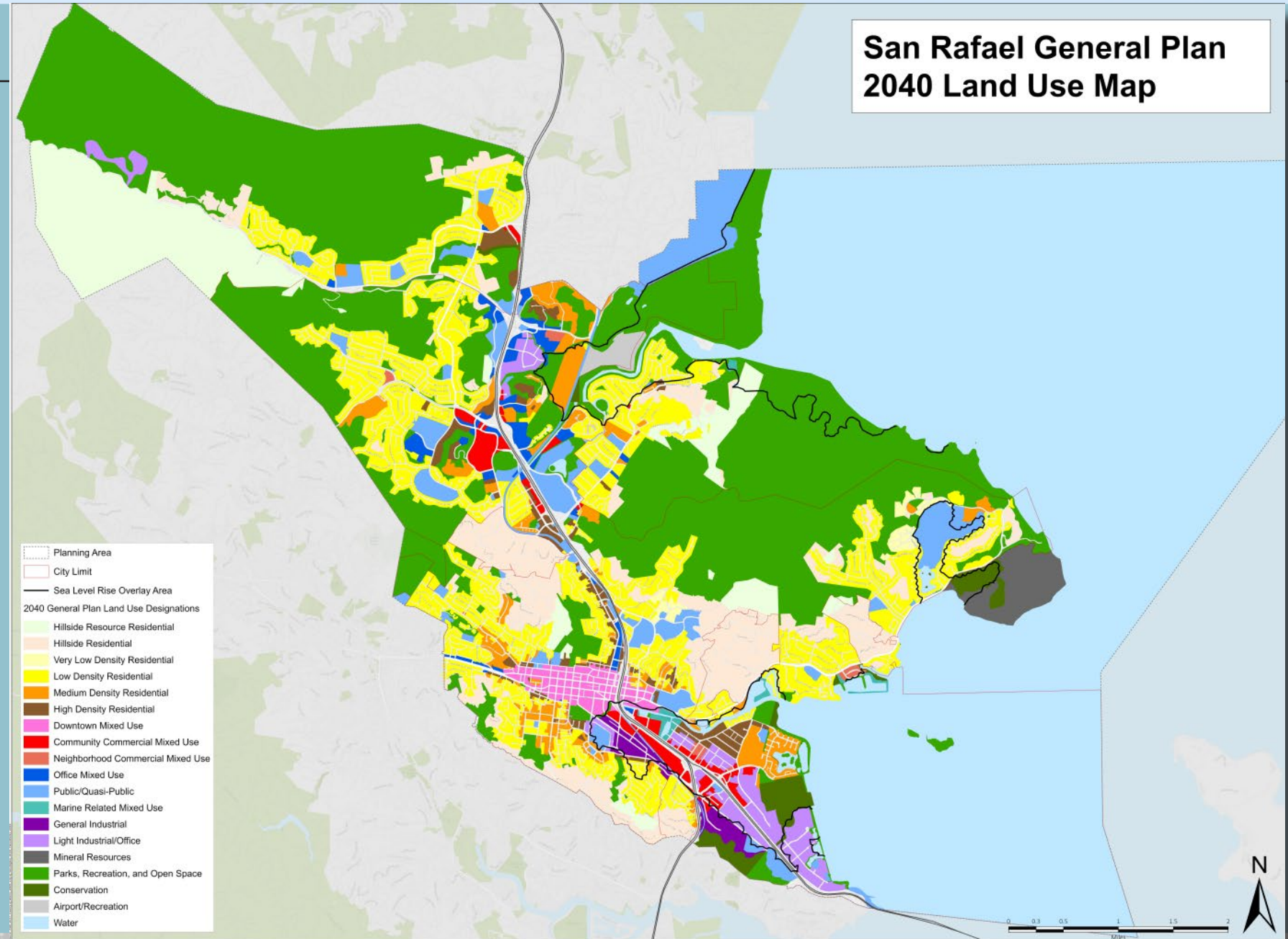


Prioritization Criteria

Service Area (3)	Description	Point Allocation
<ul style="list-style-type: none"> • Gerstle Park • Sun Valley Park • Terra Linda Park • Peacock Gap Park • Albert Park • Loch Lomond Park • Pickleweed Park 	<p><i>Park and Recreation Questionnaire (PRQ) and Statistically Valid Survey (SVS) - Frequently Visited</i></p>	<p>Maximum of 3 points (within .5 miles radius):</p> <ul style="list-style-type: none"> • 3 points for high density/use • 2 points for medium density/use
<ul style="list-style-type: none"> • High Density Residential • Medium Density Residential • Low Density Residential • Very Low Density Residential 	<p><i>San Rafael General Plan 2040 - High Density, Medium Density, Low Density, Very Low Residential Categories</i></p>	<ul style="list-style-type: none"> • 1 point for low density/use • 0 points for very low density/use

Prioritization Criteria

Service Area (3)



Prioritization Criteria

General Plan 2040 Guiding Principles (2)	Description	Point Allocation
<ul style="list-style-type: none">• <i>Opportunity for All</i>	<p><i>Serves a severely disadvantaged community per California State Parks census designation - Canal</i></p>	<p><i>Maximum of 1 point:</i></p> <ul style="list-style-type: none">• <i>1 point per principle</i>
<ul style="list-style-type: none">• <i>Adapting to the Future</i>	<p><i>Supports conservation, climate change adaptation, and/or disaster mitigation (flood, fire, drought)</i></p>	

Prioritization Criteria

Accessibility (2)	Description	Point Allocation
	<i>2022 CASp Assessment - accessibility barriers</i>	<i>Maximum of 2 points:</i> <ul style="list-style-type: none"><i>• 2 points for high impact barrier</i><i>• 1 point for medium or low impact barrier</i>



Prioritization Criteria

Operational Efficiency (1)	Description	Point Allocation
	<i>Addressing this project will lead to significant savings in staff time and City resources</i>	<i>Maximum of 1 point</i>



Prioritization Criteria

Included in Previous Planning(1)	Description	Point Allocation
<ul style="list-style-type: none">• <i>San Rafael General Plan 2040</i>• <i>Climate Change Action Plan</i>• <i>Downtown Precise plan</i>• <i>Canalfront Design Plan and Guidelines</i>• <i>Bicycle and Pedestrian Master Plan</i>	<p><i>Previous planning recommendations and/or policies</i></p>	<p><i>Maximum of 1 point</i></p> <ul style="list-style-type: none">• <i>1 point per inclusion in previous planning</i>



IV

Questions & Discussion



Terra Linda Park

Do the criteria support San Rafael's priorities?

Is there anything else you would like to see?





Next Steps



Freitas Park

Master Plan Scope

- Master Plan Recommendations

Financial Strategizing

