

---

# East San Rafael Parking Taskforce

September 2022

Progress Report



---

# Agenda

01 Introduction

02 Summary of Parking Measures

03 Presentation and Discussion

04 What's next

05 Closing



# 01 Introduction

W-Trans led the exploration of several efforts in the area with the guidance of the taskforce.

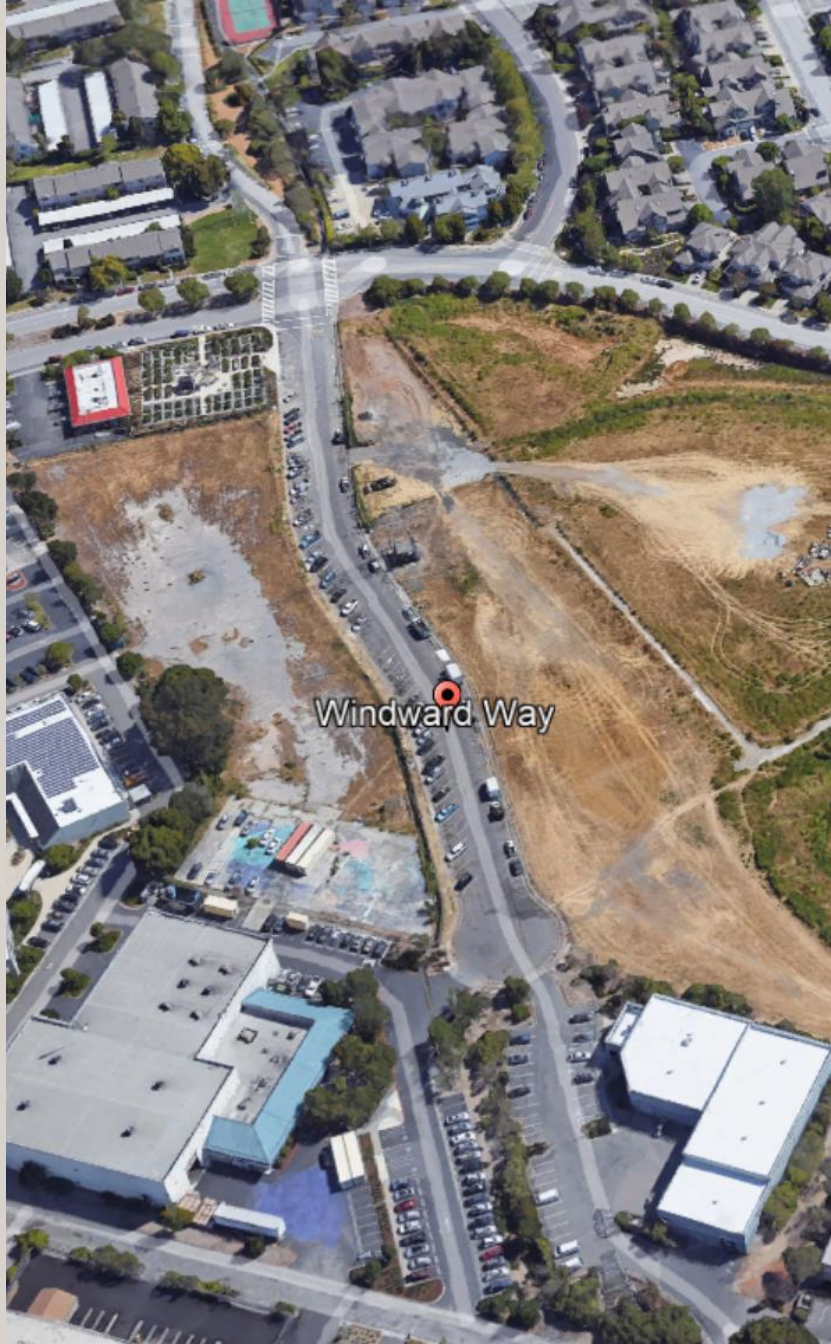
Past measures, parking survey and some outreach were done to get the measures.



# Summary of Taskforce Recommended Measures

Short Term	0-Six Months
Mid Term	Six Months- to Two Years
Long Term	Longer Than Two Years





## Measure 1.a

Consider a pilot project to gate Windward Way, increase lighting, provide security, and consider collecting a fee for residents to park overnight in this area.

Short Term

65+



## Measure 1.b

Consider partnership with the County Health and Human Services to avail parking for afterhours parking.

Mid Term

90+





## Measure 1.c

Depends on the success of  
Winward Way

Contact property owners with suitable off-street parking lots (e.g. Cardenas, Clinics, etc.) that were identified during the Task Force meetings to discuss potential shared parking agreements during evenings when businesses are closed.

Long Term

0-  
200



## Measure 2

### Spinnaker Project Underway

Explore opportunities to add parking on City-owned land and/or modify parking configurations. An active project under construction will reconfigure the parking to gain more on-street and off-street parking in the area.

Short Term

15+





## Measure 3

Could be implemented after the Taskforce meeting

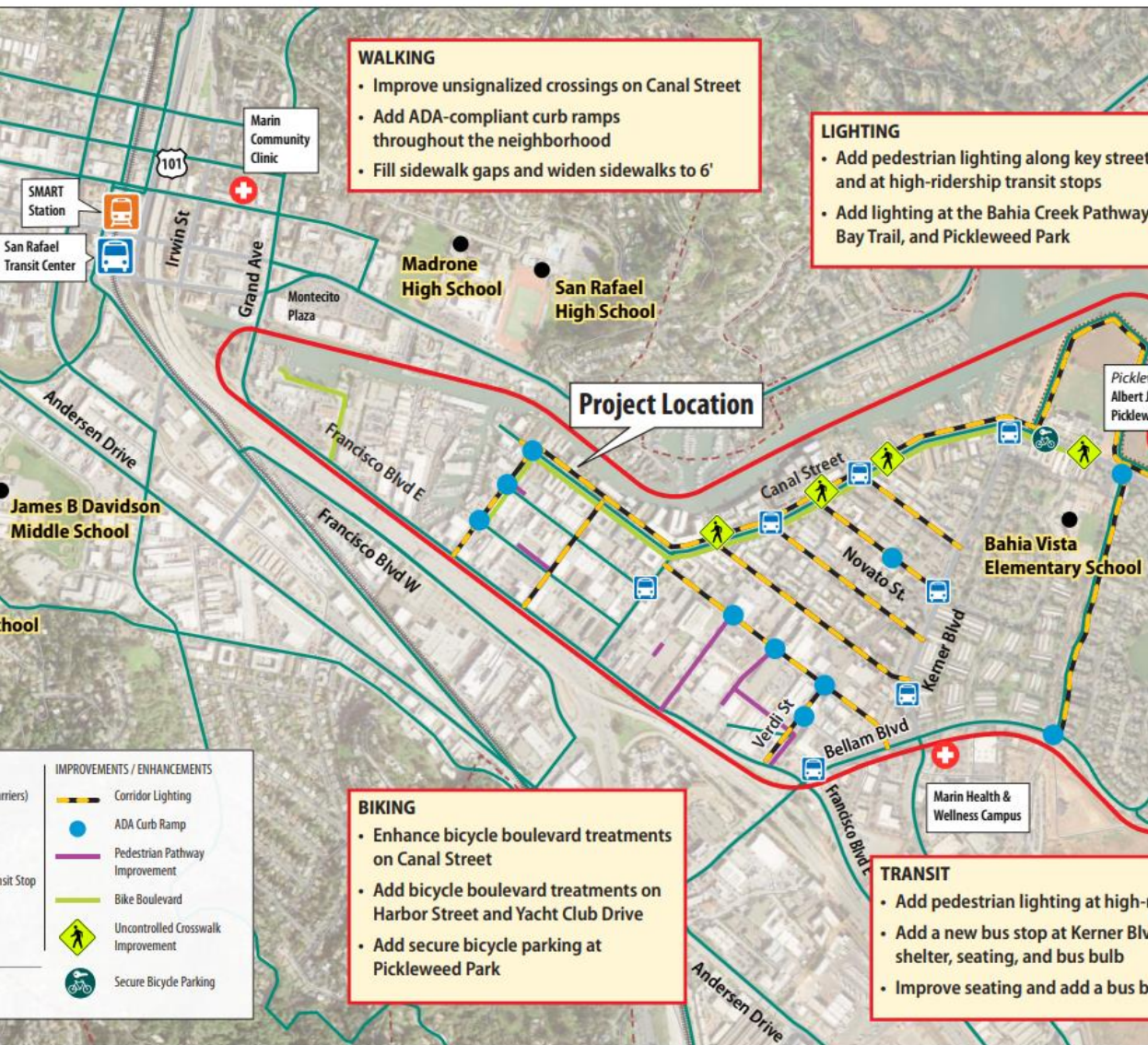
Remove the four-hour time limit restrictions in on-street spaces identified during the Task Force meetings in the Commercial zone on Saturdays and Sundays so that long-term parkers (e.g. local residents) may use those spaces while many businesses are closed and current parking occupancy rates are low.

Short Term

167

After Hours  
&  
Weekends





CANAL NEIGHBORHOOD ACTIVE TRANSPORTATION IMPROVEMENTS

# Measure 4

## Lighting Improvements Underway

Parking experience could be realized as a result of walkability improvements such as traffic calming, crossing, and lighting identified in the June 2022 Canal Neighborhood Community-Based Transportation plan. There is a pending Adaptive Transportation Program grant application for a number of these measures.

Short/Mid Term

10-50





## Measure 5

Plans are ready for immediate implementation

The City identified on-street parking spaces that could benefit from the introduction of street markings (i.e. "T"s and "L"s) to discourage inefficient parking behavior. This would also require enforcement by Parking Services or the Police Department.

Short Term

50+



## Measure 6

Recommend to start after other parking options are available

Consider expanding the hours of targeted parking enforcement to include early mornings and/or evenings to prevent illegal parking that can cause access and safety issues (e.g. red-curb parking, curb ramps, crosswalks etc.)

Mid/Long  
Term

0





## Measure 7

Educate the public regarding the informal permitting of parallel parking in front of single-family residence driveways by authorized motorists (e.g. residents or guests of the home). Develop appropriate graphics showing proper parking protocols and prohibited behaviors (e.g. parking perpendicular to the curb, blocking the sidewalk).

Ongoing

Reduce  
Demand

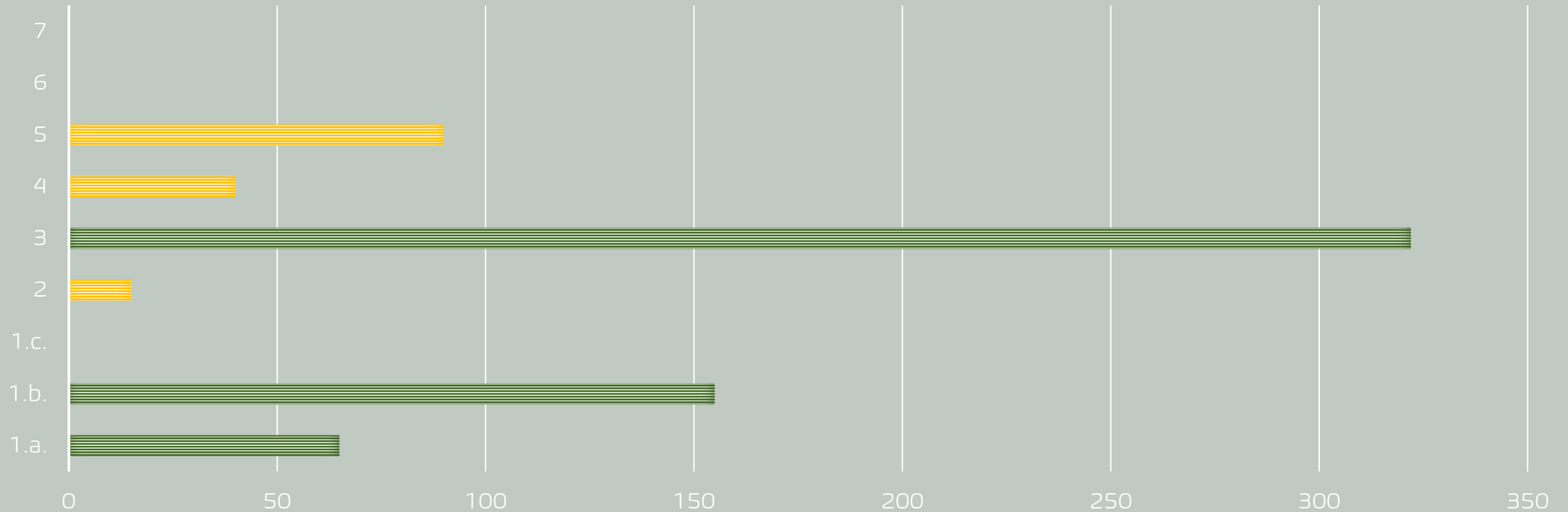
04  
What's next



# Summary

## CUMULATIVE PARKING INVENTORY

Cumulative All Day Cumulative After Hours



# Proposed Next Steps

Thanks to your commitment.

Staff will continue to implement short term and mid-term measures.

The next Taskforce meeting in 6-12 months.

Rafat Raie

Deputy Public Works Director

