

SCOPE OF WORK

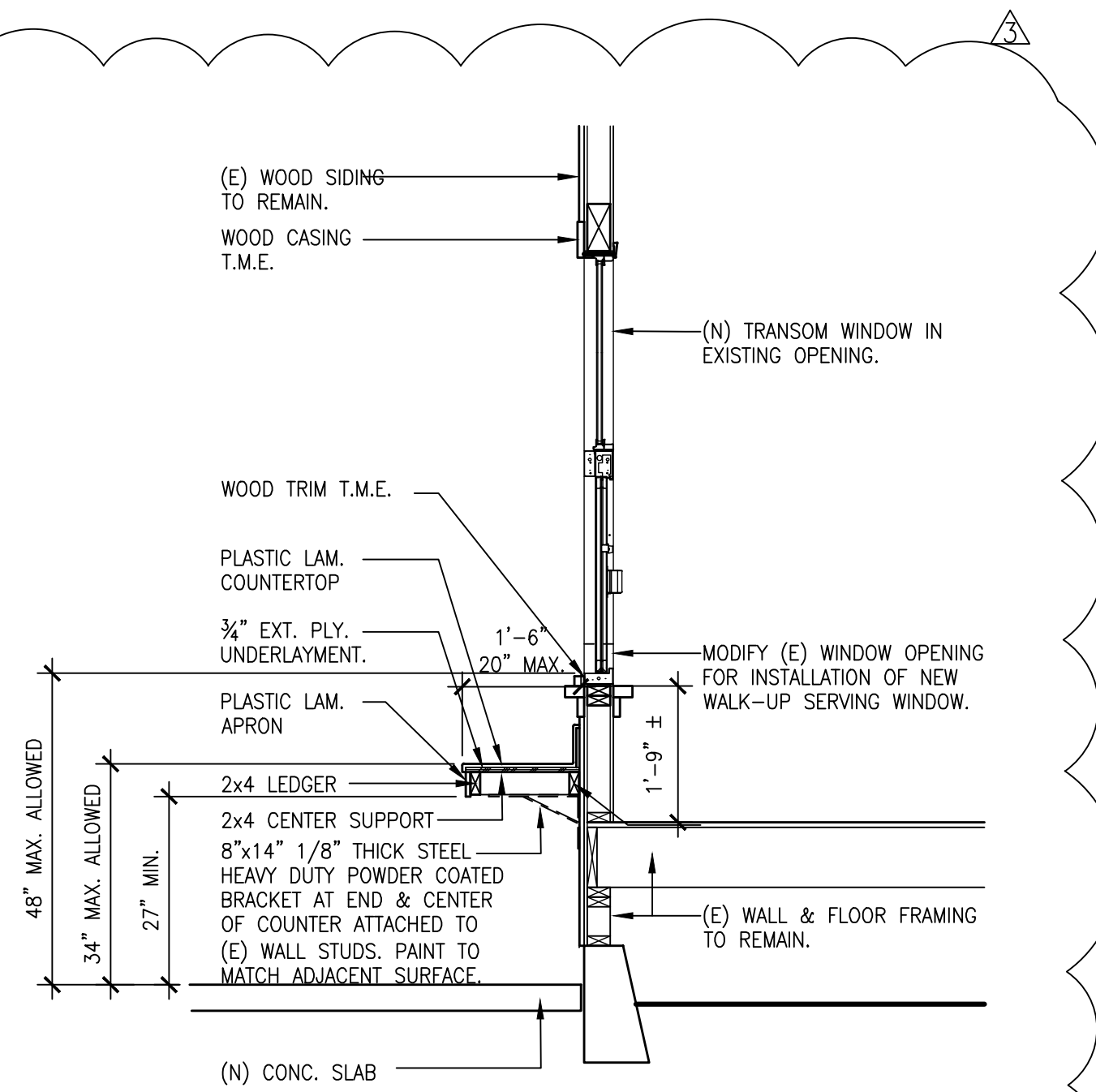
REMODEL EXISTING RETAIL SPACE FOR NEW WALK UP SERVICE TEA SHOP.

GENERAL NOTES

1. ALL NEW CONSTRUCTION SHALL COMPLY WITH:

- 2019 EDITION OF THE CALIFORNIA RESIDENTIAL CODE.
- 2019 EDITION OF THE CALIFORNIA BUILDING CODE.
- 2019 EDITION OF THE CALIFORNIA ELECTRICAL CODE.
- 2019 EDITION OF THE CALIFORNIA MECHANICAL CODE.
- 2019 EDITION OF THE CALIFORNIA PLUMBING CODE.
- 2019 EDITION OF THE CALIFORNIA FIRE CODE.
- 2019 EDITION OF THE CALIFORNIA ENERGY CODE.
- 2019 EDITION OF THE CALIFORNIA TITLE 24 ENERGY EFFICIENCY STANDARDS.
- 2019 EDITION OF THE CALIFORNIA GREEN BUILDING STANDARDS.
- ALL OTHER LOCAL CODES AND ORDINANCES ADOPTED BY CITY OF SAN RAFAEL.

2. VERIFY ALL CONDITIONS AND DIMENSIONS IN THE FIELD. DO NOT SCALE THESE DRAWINGS; DIMENSIONS TAKE PRECEDENCE. THESE CONSTRUCTION DOCUMENTS AND THE CONDITIONS ON THE SITE SHALL BE THOROUGHLY REVIEWED BY THE CONTRACTOR AND ANY DISCREPANCIES IN THESE CONSTRUCTION DOCUMENTS SHALL BE BROUGHT TO THE IMMEDIATE ATTENTION OF THE ARCHITECT PRIOR TO ANY WORK.



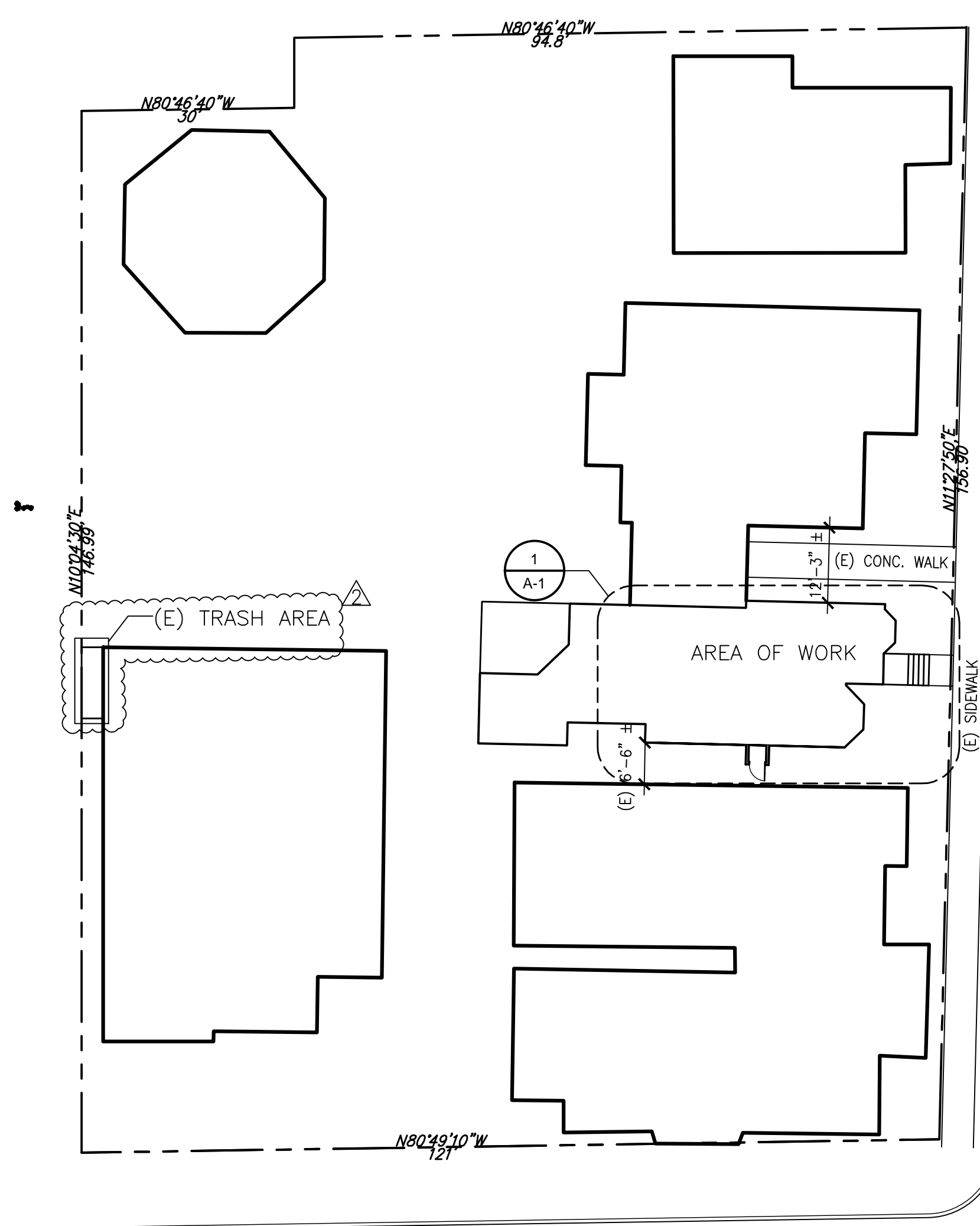
5 WINDOW DETAIL

SCALE: 1/2" = 1'-0"

Planning Commission 1/24/23 Exhibit 1

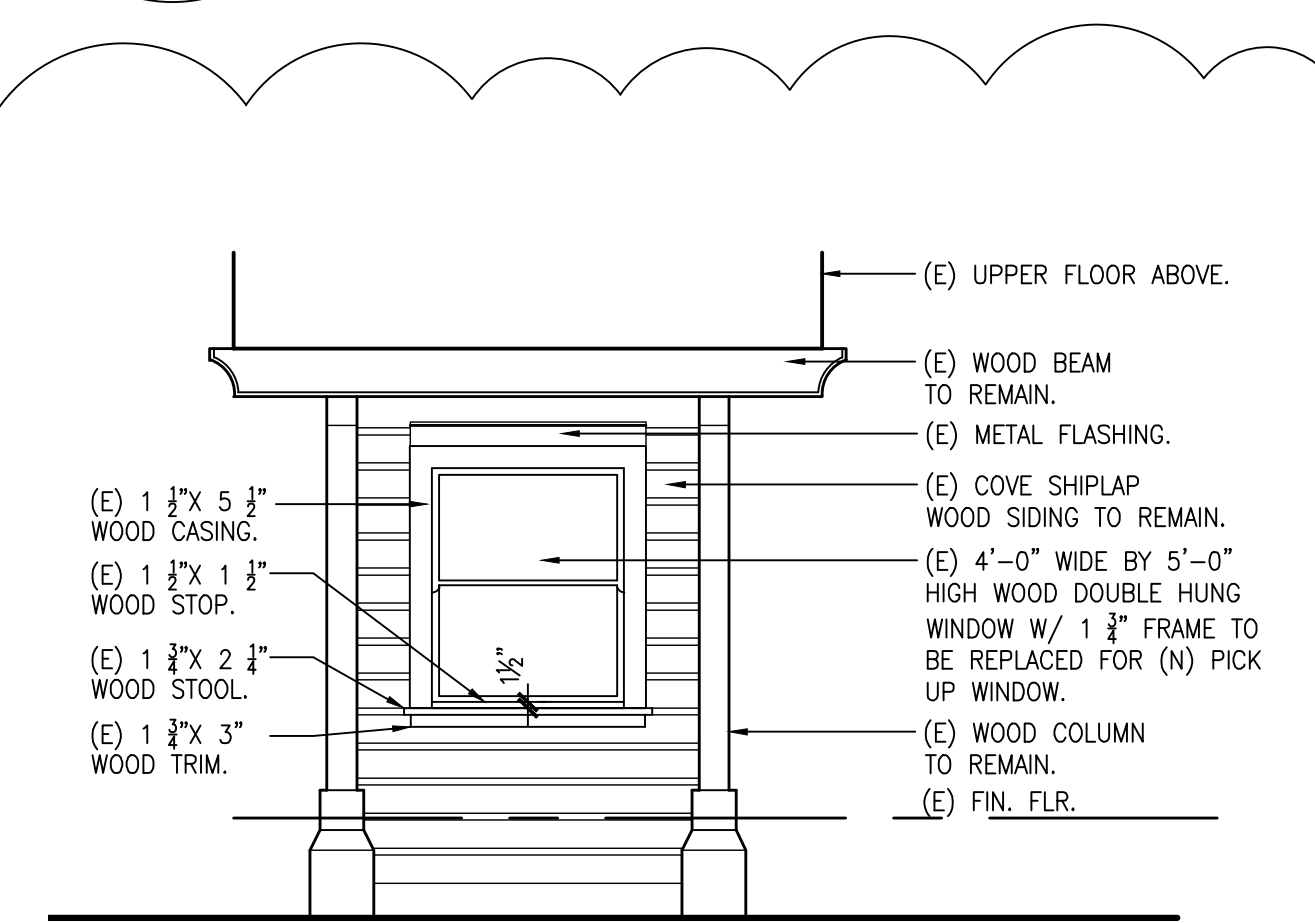
EQUIPMENT SCHEDULE

Item No	Qty	Equipment Category	Manufacturer	Model Number	OWNER	VENDOR	G.C.	Amps	KW	Volts	Phase	HP	Direct	Plug	Cold Water Size (in)	Hot Water Size (in)	Direct Drain Size (in)	Indir. Drain Size (in)	Gas Size (in)	MBTUH	Equipment Remarks	Item No		
1	1	1 COMPARTMENT SINK	REGENCY	600S11818XRT	X																W / 1 DRAINBOARD	1		
1.1	1	WALL MOUNT FAUCET	T&S BRASS	B-0231-V-15	X										1/2"	1/2"		1 1/2"			MAX. FLOW RATE 1.6 GPM @ 60 PSI	1.1		
2	1	SANDWICH & SALAD PREP TABLE	TRUE	TSSU-48-12-HC	X			5.8		115v	1	1/3		Y								2		
3	1	24" x 60" WORK TABLE	REGENCY	600T824606	X																	3		
4	1	BLENDER	VITAMIX	TOUCH & GO 068255	X			12.0		120v	1	2.3		Y								4		
5	1	CUP SEALING MACHINE	BOSSER	EM011-V	X					110v	1			Y								5		
6	1	COUNTERTOP WARMER	NEMCO	6100K	X			4.6		120v	1			Y								6		
7	1	MOP SINK	REGENCY	600SM16206	X												2"				W/ 15" STAINLESS BACKSPASH -3 SIDES	7		
7.1	1	MOP SINK FAUCET	REGENCY	600FM586	X										1/2"	1/2"						7.1		
7.2	1	MOP HANGER & SHELF	REGENCY	600WSUB24	X																	7.2		
8	1	HAND SINK	JOHN BOOS	PBHS-16	X												1 1/2"				W/SPLASH GUARDS MIN 6" HIGH	8		
8.1	1	HAND SINK FAUCET	JOHN BOOS	PBF-8-S	X										1/2"	1/2"					MAX. FLOW RATE 1.6 GPM @ 60 PSI	8.1		
9	1	ICE MACHINE	MANTOWEG	IT0428	X			11.3		115v	1			Y								9		
10	1	SLIDING DOOR REFRIGERATOR	DUCKERS	D28R	X			3.1		115v	1											ELEV. A MIN. OF 6" OFF FLOOR	10	
11	1	3 COMPARTMENT SINK	REGENCY	600S3162018G	X																		11	
11.1	1	3 COMPARTMENT SINK FAUCET	T&S BRASS	B-0231-V-15	X										1/2"	1/2"							11.1	
12	1	COUNTERTOP INDUCTION	AVANTCO	IC1800	X			15		120v	1			Y									12	
13	1	24" x 24" WORK TABLE	REGENCY	600T1824G	X																		13	
14	1	WATER HEATER	RHEEM	ELD52-T8	X					240v	3											SEE HOT WATER DEMANDS P1	14	
15	1	GREASE TRAP	ASHLAND POLYTRAP	4835	X												2"					SEE PLUMBING PLAN 1/P1	15	
16	1	S/S WIRE SHELVING	METRO	SEE ADJUSTABLE 3"	X																	SIZES PER FLOOR PLAN PROVIDE MIN. 96 LF	16	
17	1	POS STATION	T.B.D.	T.B.D.	X																		17	
18	1	S/S SLANT WALL SHELVING	REGENCY	600WR42	X																			18
19	1	LOCKERS	T.B.D.	T.B.D.	X																			19
20	1	SERVING WINDOW AND TRANSOM	QUICKSERV/ MILGARD	CALIFORNIA SC-4030	X																			20
21	1	60" LONG X 18" WIDE X 5" DEEP COUNTER	MILLWORK		X																			21



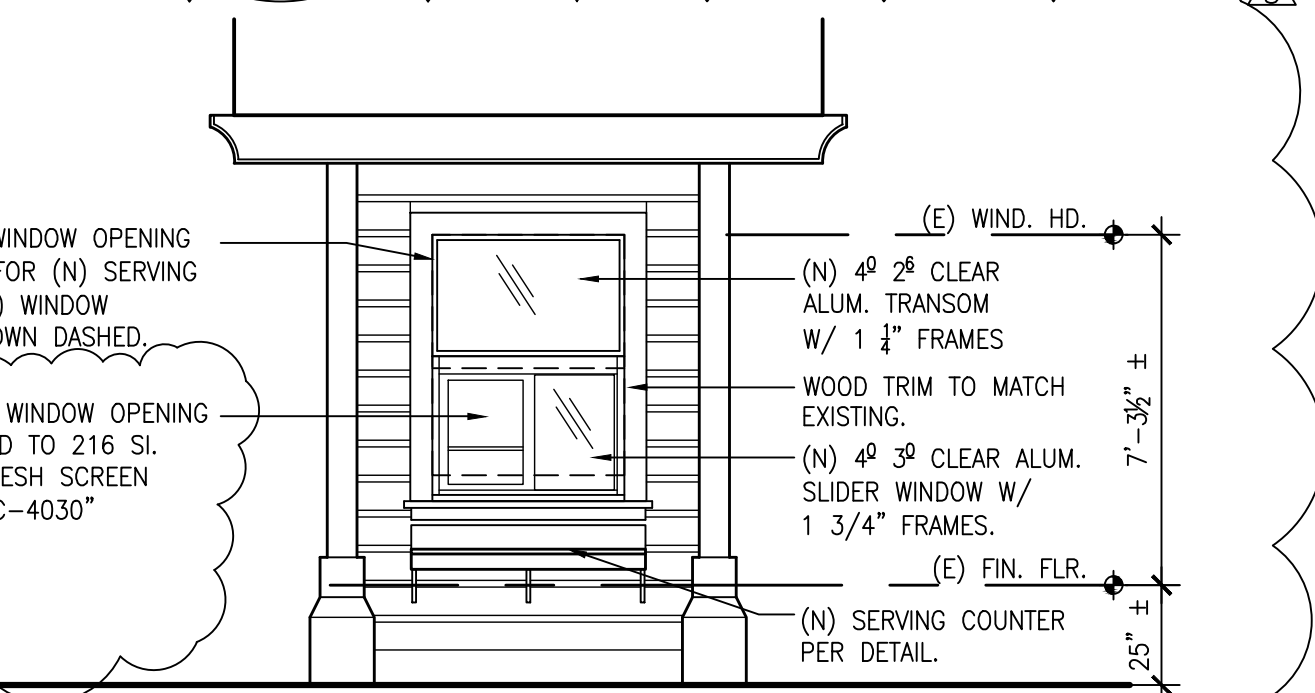
3 SITE PLAN

SCALE: 1/16" = 1'-0"



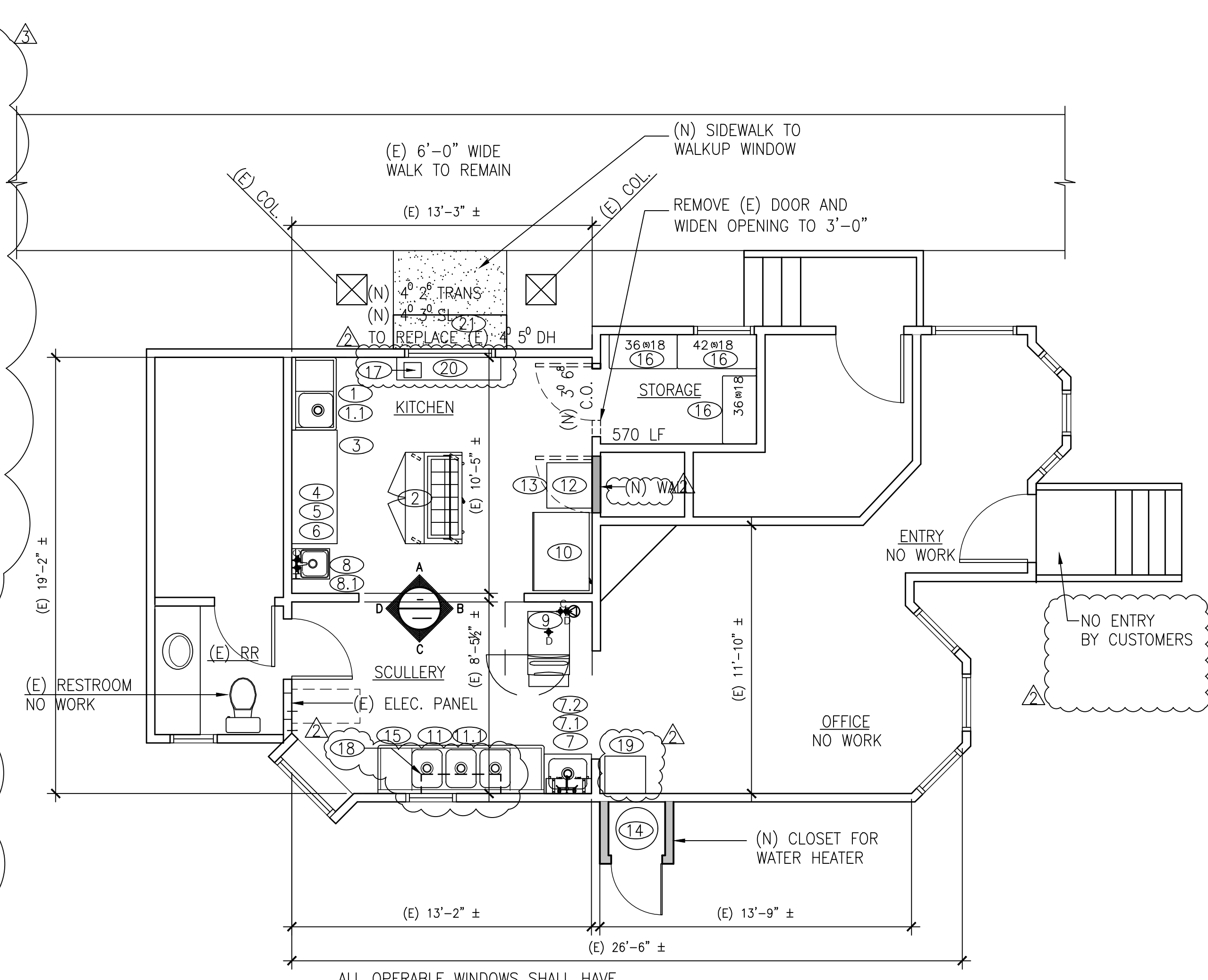
4 EXISTING WINDOW

SCALE: 1/4" = 1'-0"



2 WALK UP WINDOW

SCALE: 1/4" = 1'-0"



1 FLOOR PLAN

SCALE: 1/4" = 1'-0"

ARCHITECTS
 FREDRIC C. DIVINE ASSOCIATES
 1924 FOURTH ST., SAN RAFAEL, CA 94901
 Phone: (415) 457-0220 Fax: (415) 454-9581

ODDCHA
 905 F IRWIN STREET
 SAN RAFAEL, CA
 APN: 014-122-14
 FOR: CHAROEN BEVERAGE LLC

SITE PLAN, FLOOR PLAN AND EQUIPMENT SCHEDULE

REVISIONS	05-26-2022	REVIEW SET
	06-03-2022	SANITATION DISTRICT COMMENTS
	06-10-2022	HEALTH DEPT. SUBMITAL
	08-01-2022	HEALTH DEPT. RESPONSE
	12-12-2022	PLANNING DEPT. RESPONSE

Date: 12-12-2022
 Scale: As Noted
 Drawn: LSK
 Job #: 21037
 Prototype: DIVINE

A1