



**SAN RAFAEL**  
THE CITY WITH A MISSION

Agenda Item No: 6.a

Meeting Date: March 6, 2023

**SAN RAFAEL CITY COUNCIL AGENDA REPORT**

Department: Fire

Prepared by: Quinn Gardner, Deputy Director of  
Emergency Management  
Kate Anderson, Hazard Mitigation Coordinator  
Manny Albano, Defensible Space Program Manager

City Manager Approval:  \_\_\_\_\_

**TOPIC: INFORMATIONAL REPORT ON WILDFIRE PREVENTION EFFORTS IN THE MWPA SAN RAFAEL ZONE**

**SUBJECT: INFORMATIONAL REPORT ON THE MARIN WILDFIRE PREVENTION AUTHORITY WORK PLAN PROJECTS FOR THE FISCAL YEARS 2022-23 AND 2023-24**

**RECOMMENDATION:**

Accept the informational report on the Marin Wildfire Prevention Authority work plan projects for fiscal years 2022-23 and draft project list for fiscal year 2023-24 and provide feedback to staff.

**BACKGROUND:**

In March of 2020, Marin County voters approved Measure C, a parcel tax to fund wildfire prevention efforts in Marin County. Measure C established and funds the [Marin Wildfire Prevention Authority](#) (MWPA) through a Joint Powers Agreement (JPA). The MWPA consists of 17 Marin County agencies and is tasked with improving wildfire safety for all of Marin residents, businesses and visitors. In June of each year, the MWPA Board approves a work plan for the upcoming fiscal year. Prior to Board approval, the work plan is developed and approved by the Advisory Technical Committee and Operations Committee.

In the first year of the MWPA, a Board of Directors and multiple Committees were established to help discuss, develop, and approve the proposed work plan projects and distribute the annual MWPA budget of approximately \$20 million. The Board of Directors includes an elected official from each of the 17 participating agencies. The committees include an Advisory/Technical Committee (ATC) to provide expert advice and recommendations regarding the development and implementation of MWPA programs and an Operations Committee that includes fire chiefs and city managers who are responsible for creating the recommended annual budget and help guide the overall approach to the work plan development.

---

FOR CITY CLERK ONLY

Council Meeting: \_\_\_\_\_

Disposition: \_\_\_\_\_

Each year starting in December, the work plan development begins for the following fiscal year. The project proposals are discussed multiple times at meetings of the ATC and Operations Committee before receiving approval from the Board of Directors in June. The six months of development may include multiple revisions of project scope and budget and continued coordination and planning with non-MWPA member partners.

In 2021, the MWPA developed a specific [mission, vision](#), and [goals](#) to help guide project planning and work plan development. The mission is to support the creation of fire adapted communities through five main project areas. They include: Vegetation Management and Local Wildfire Development; Wildfire Detection, Alert, Notification, and Evacuation Improvements; Grants and Partnerships; Public Outreach and Education; and Defensible Space Evaluations and Home Hardening.

Per the JPA agreement, MWPA funding is divided into three main buckets: Core projects by Zone (60%), Defensible Space (20%), and Local Projects (20%). Local projects are at the discretion of and directly benefit the member agency. For the City of San Rafael, the Defensible Space Program is committed to adapting private parcels through home hardening and defensible space as defined in the San Rafael Municipal Code (SRMC) Chapter 4.12 citywide vegetation standards. Core projects impact the entire San Rafael Zone, including unincorporated San Rafael and Marinwood Community Services District, and are often completed in collaboration with other landowning partners.

To date, San Rafael has submitted three work plans and is in the process of developing the work plan for the fiscal year 2023-24. In developing the City's annual work plan, staff utilize the [San Rafael Wildfire Prevention and Protection Action Plan \(WPPAP\)](#) and the [Marin County Community Wildfire Protection Plan \(CWPP\)](#) as guides.

To implement the work plans effectively, San Rafael has prioritized and invested in staffing to accomplish a high volume of work early in the lifespan of the tax measure. Staffing accounts for approximately 40% of San Rafael's annual MWPA work plan budget and has allowed for a robust effort in accomplishing defensible space evaluations for residents, implementing vegetation management projects, providing community education and outreach, and facilitating and managing resident direct assistance. As an early adopter of investing in staff, San Rafael has become a leader in project development and implementation, manages an effective and responsive defensible space inspection program, and facilitates multiple assistance programs for residents.

Over half of the staff costs associated with the MWPA are in direct support of the Defensible Space Program, which by MWPA design is required to be at least 20% of the MWPA budget. The Defensible Space Program consists of a Program Manager, six full time positions and up to twelve seasonal hires dedicated to individual property evaluations and one-on-one resident education. These staff have been essential to implementing the updated city-wide vegetation standards. Since ordinance adoption, per City Council's direction, staff have taken a primarily educational approach throughout the city, allowing the community to adjust to the new ordinance. Since April 2021, the Wildfire team has conducted 27,322 defensible space inspections.

Adapting San Rafael and Marin County to wildfire takes a multi-faceted approach which is reflected in the diverse projects funded by the MWPA. These include efforts to educate and prepare residents before incidents occur, prevent incidents from occurring, and minimize the impact of incidents that may occur. All of the City's efforts are aimed at reducing the risk wildfire poses to our residents, visitors, and businesses in an equitable, sustainable and ecologically sound way.

**ANALYSIS:**

The adopted [2022-2023 MWPA Work Plan](#) outlines a whole community fire-adapted approach that includes improvement to evacuation routes, open space fuel reduction, public education, defensible space and home hardening, ignition reduction, early detection, alert and warning, and numerous other projects. The WPPAP has continued to serve as a guiding document to develop projects for MWPA funding. A summary of the 2022-23 work plan and the associated MWPA goals is provided below.

**MWPA 2022-23 San Rafael Workplan Projects**

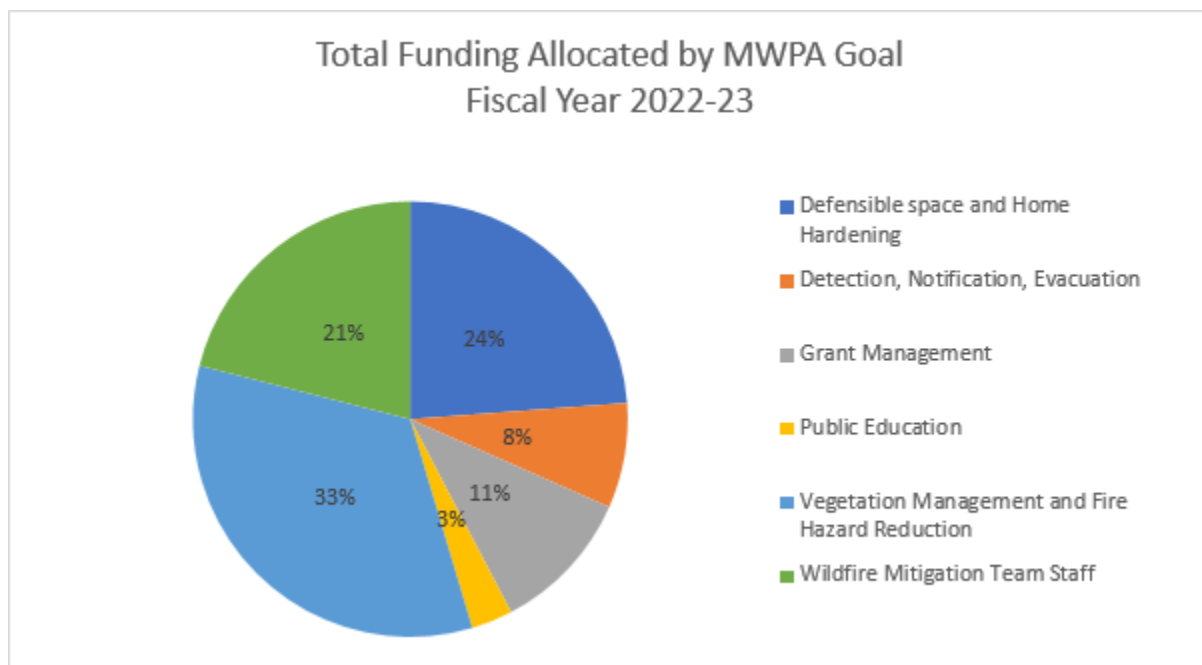
Project Name	Funding Source	MWPA Goal	Budget	Status
China Camp LRAD Emergency Notification System	Core	Detection, Notification, Evacuation	\$150,000	Postponed
Debris Disposal	Core	Vegetation Management and Fire Hazard Reduction	\$40,000	In progress
Direct Resident Assistance	Core	Grant Management	\$336,242	Ongoing
Educational Landscaping	Core	Vegetation Management and Fire Hazard Reduction	\$85,000	Completed
Evacuation Route Vegetation Management	Core	Vegetation Management and Fire Hazard Reduction	\$75,000	Completed
Fire Road Vegetation Clearance	Core	Vegetation Management and Fire Hazard Reduction	\$150,000	Ongoing
Open Space Defensible Space Fuel Reduction	Core	Vegetation Management and Fire Hazard Reduction	\$200,000	Ongoing
Prescribed Herbivory	Core	Vegetation Management and Fire Hazard Reduction	\$200,000	Ongoing
Public Education, Outreach, and Engagement	Core	Public Education	\$125,000	In progress
Ridgewood Shaded Fuel Break Planning	Core	Vegetation Management and Fire Hazard Reduction	\$100,000	In progress
*South San Pedro Fuel Reduction	Core	Vegetation Management and Fire Hazard Reduction	\$95,533	Ongoing
*South San Rafael Hill Fuel Reduction	Core	Vegetation Management and Fire Hazard Reduction	\$57,663	Completed
Vegetation Project Management Staff	Core	Vegetation Management and Fire Hazard Reduction	\$350,000	Funded Salaries
West San Pedro Fuel Reduction	Core	Vegetation Management and Fire Hazard Reduction	\$75,000	Not Started
Defensible Space Program	Defensible Space	Defensible space and Home Hardening	\$969,010	Funded Salaries
Cal Fire Forest Health Grant	Local	Grant Management	\$100,000	Not Funded
Landscape Restoration	Local	Vegetation Management and Fire Hazard Reduction	\$200,000	In progress
Management Staff	Local	Vegetation Management and Fire Hazard Reduction	\$96,000	Funded Salaries
Mitigation and Preparedness Staff	Local	Vegetation Management and Fire Hazard Reduction	\$60,000	Funded Salaries
*Parking Boxes	Local	Detection, Notification, Evacuation	\$92,000	Ongoing
Police Rangers for Ignition Reduction	Local	Vegetation Management and Fire Hazard Reduction	\$350,000	Funded Salaries

Project Name	Funding Source	MWPA Goal	Budget	Status
Small and Responsive Projects	Local	Vegetation Management and Fire Hazard Reduction	\$163,000	In progress

\*Projects rolled over from the 2021-22 workplan.

\*\*Cumulative project costs over multiple workplans

MWPA Goal	Allocated Funding	Percent of Total
Defensible space and Home Hardening	\$969,010	24%
Detection, Notification, Evacuation	\$317,000	8%
Grant Management	\$436,242	11%
Public Education	\$125,000	3%
Vegetation Management and Fire Hazard Reduction	\$1,366,196	33%
Wildfire Mitigation Team Staff	\$856,000	21%
<b>Total</b>	<b>\$4,069,448</b>	



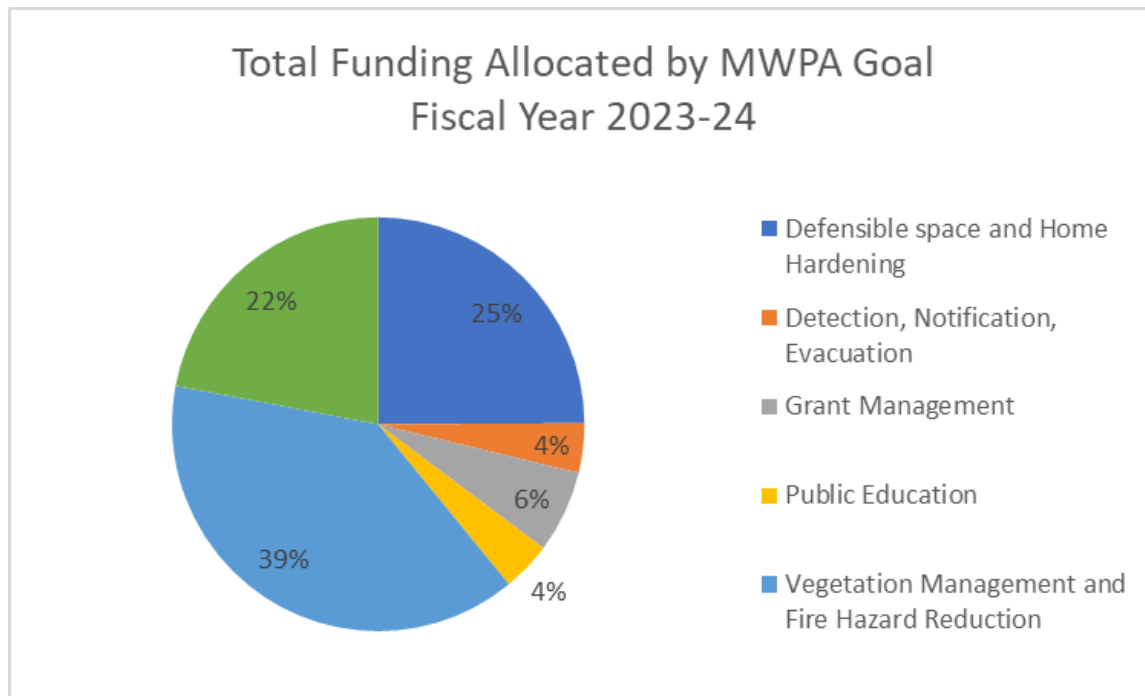
Throughout the project development and implementation phases, project budgets and timelines may need to be adjusted. With the approval of the MWPA Board, staff will reallocate funding from one project to another within the same funding bucket and zone. In some cases, projects such as the long-range acoustical device (LRAD) alert system installation proposed in the 2022-23 work plan, are deferred to future years due to unforeseen delays such as environmental compliance or partner scheduling.

Provided below are the draft project proposals for the 2023-24 work plan. Budgets provided are only an estimate and will be adjusted based on total funding available. They are provided to help provide scale and prioritization context. These projects and budget estimates are still subject to the review of the Advisory Technical Committee, Operations Committee, and MWPA Board. All physical projects that have a direct impact on the environment will be subject to an environmental review prior to implementation.

**MWPA 2023-24 San Rafael Workplan Projects**

Project Name	Funding Source	MWPA Goal	Budget	Status
Direct Residence Assistance	Core	Grant Management	\$250,000	Ongoing
Educational Landscaping	Core	Public Education	\$50,000	New Site
Evacuation Route Vegetation Clearance	Core	Detection, Notification, Evacuation	\$100,000	Ongoing
Fire Road Vegetation Clearance	Core	Vegetation Management and Fire Hazard Reduction	\$200,000	Ongoing
Open Space Defensible Space Fuel Reduction	Core	Vegetation Management and Fire Hazard Reduction	\$150,000	Ongoing
Prescribed Herbivory	Core	Vegetation Management and Fire Hazard Reduction	\$250,000	Ongoing
Public Education, Outreach and Engagement	Core	Public Education	\$100,000	Ongoing
Ridgewood Shaded Fuel Break Implementation	Core	Vegetation Management and Fire Hazard Reduction	\$500,000	New
Vegetation and Project Management Staff	Core	Wildfire Mitigation Team Staff	\$350,000	Ongoing
Defensible Space Program	Defensible Space	Defensible space and Home Hardening	\$969,010	Ongoing
Management Staff	Local	Wildfire Mitigation Team Staff	\$96,000	Ongoing
Marinwood Fuel Reduction	Local	Vegetation Management and Fire Hazard Reduction	\$65,000	Ongoing
Mitigation and Preparedness Staff	Local	Wildfire Mitigation Team Staff	\$60,000	Ongoing
Parking Boxes	Local	Detection, Notification, Evacuation	\$50,000	Ongoing
Police Rangers for Ignition Reduction	Local	Wildfire Mitigation Team Staff	\$350,000	Ongoing
San Rafael Landscape Restoration	Local	Vegetation Management and Fire Hazard Reduction	\$100,000	Ongoing
San Rafael Small and Responsive Projects	Local	Vegetation Management and Fire Hazard Reduction	\$248,010	Ongoing

MWPA Goal	Allocated Funding	Percent of Total
Defensible space and Home Hardening	\$969,010	25%
Detection, Notification, Evacuation	\$150,000	4%
Grant Management	\$250,000	6%
Public Education	\$150,000	4%
Vegetation Management and Fire Hazard Reduction	\$1,513,010	39%
Staff	\$856,000	22%
<b>Total</b>	<b>\$3,888,020</b>	



The 2023-24 projects will largely be continuations of previously started projects as well as maintenance of projects completed in previous years. The proposals also continue the City’s commitment to supporting residents in adapting to wildfire through education, direct assistance, and grant programs. Some annual projects such as goat grazing are expanding as a means to maintain treatment sites from previous years. The proposed San Rafael workplan represents a continued commitment to assuring adequate staff are available to meet resident needs and effectively, safely, and sustainably implement projects while implementing a 360-degree approach in alignment with the WPPAP. The projects continue the five main focus areas of the MWPA as explained below.

Vegetation Management and Local Wildfire Prevention Mitigation

Vegetation Management accounts for most of the allocated funding and is one of the most visible types of projects the City accomplishes. Through managing unhealthy, overgrown, and non-native vegetation, the fuel available to a wildfire is reduced and thus there is a lower chance of ignition, slower spread, and less impact should a fire occur. Vegetation management includes a broad array of project types such as shaded fuel breaks, defensible space, prescribed herbivory (goats), evacuation route vegetation clearance, fire road vegetation clearance, invasive plant removal, demonstration gardens, chipper days and debris disposal, and hazardous tree removal.

In the first three years of the tax measure, staff have focused most of their fuel reduction efforts within the defensible space zone around residential development that abuts open space and along fire roads to improve open space access for emergency response. Targeting these areas encourages and reinforces the work residents do on their own property by creating an effective fuel break between open space and the built environment. Defensible space shaded fuel breaks are constructed in a way to serve as permanent wildfire mitigation infrastructure and will require ongoing maintenance to keep vegetation and fuel loading at desired levels. In the 2023-24 work plan, funding will be allocated to maintenance of fuel breaks established in the first three years.

As the MWPA moves into the fourth year, the City will begin to focus on long-term landscape restoration as a strategy to maintain established fuel breaks and adapt the larger landscape to wildfire. Landscape restoration will look at larger pieces of the landscape around the City and consider treatment across land ownership and jurisdictional boundaries. Coordination among landholders, land managers, and agencies is crucial to achieving the land management objectives and the risk reduction goals. The City has successfully partnered with landholders that include Marin County Parks, California State Parks, and private landowners of large parcels, as well as adjacent fire response agencies including Marin County Fire Department, Novato Fire Protection District, and Central Marin Fire District, to begin planning larger cross-boundary projects within the San Rafael MWPA Zone. The 2023-24 workplan will continue these efforts.

Similar to previous years, treatment activities proposed for 2023-24 include the removal of invasive plants, including French broom, Scotch broom, eucalyptus trees, and acacia trees; creating breaks in horizontal fuel continuity to reduce fire spread; removing ladder fuels to reduce vertical continuity of fuels to keep the fire on the surface; and in some cases where it is responsible to do so, the application of prescribed fire, which is the intentional use of fire on the landscape. All prescribed fire must be conducted under a strict set of weather parameters to increase the likelihood of achieving the desired effect and minimize the risk of fire escapes.

Prescribed burning is a commonly used tool to help dispose of biomass from a project site, modify fuel loading, or achieve an ecological goal. Marin County has a history of prescribed fire, regularly used in the form of pile burning. Prescribed fire can be applied in many ways, with pile burning being the most used and accepted by the public. Pile burning is most commonly used when vegetation cannot be effectively removed from a project site by manual or mechanical means. Pile burning is a relatively safe activity and is only conducted by qualified suppression personnel under appropriate weather conditions after the piles have cured to reduce smoke impacts. Broadcast burning is another method of prescribed burning and is used to cover larger swaths of land to consume and reduce surface fuels in strategic areas. Broadcast burns are only initiated under specific weather conditions after extensive planning with ample fire suppression resources on hand. Broadcast burning is an important tool to begin re-introducing fire to California's landscape where most of the vegetation communities evolved with fire.

In 2023, there are three prescribed burns planned for areas within the MWPA San Rafael Zone. No prescribed burning is planned for City-owned lands. Two burns, one within the Terra Linda/Sleepy Hollow Preserve owned by Marin County Parks and one within China Camp State Park, are planned for areas within the Local Responsibility Area (LRA) where San Rafael Fire Department has emergency response and fire code jurisdiction. The third prescribed burn is planned for lands owned by the City of Novato and privately-owned lands within unincorporated areas of the San Rafael Zone where Marin County Fire has emergency response jurisdiction.

In partnership with Marin County Parks and the County Fire Department, spring pile burning is scheduled to occur in the MWPA funded Terra Linda Defensible Space Fuel Reduction Project on Marin County Park's Terra Linda preserve that was completed in April 2022. After a burn window is established by State Parks, broadcast burning will occur within China Camp State Park, conducted by State Parks staff and Marin County Fire Department staff. A portion of the burn unit falls within the San Rafael LRA and San Rafael Fire will be notified of the burning and likely asked to participate and support the project. Lastly, the Novato Fire Protection District is planning a broadcast burn in coordination with the Marin County Fire Department on lands owned by the City of Novato and St. Vincent's that fall into an unincorporated area within the MWPA San Rafael Zone. The burn is not within the city limits or the San Rafael LRA but may have smoke impacts to San Rafael residents.



Wildfire Detection, Alerts, and Evacuation Program Improvements

In August 2020, as part of the WPPAP, staff began developing a [parking box program](#) to ensure emergency access and egress on narrow roadways. These regulations were further defined in a 2021 amendment to SRMC section 5.40.080 (parking prohibited on narrow streets). A pilot project on San Rafael Lincoln Hill was completed in late 2021. Funding for implementing this program has been included in previous work plans and will be continued in the 2023-24 work plan.

In addition, all staff are trained and committed to helping residents sign up for emergency alerts and develop family evacuation plans. Staff have prioritized removing hazardous and overgrown vegetation along roadways and key evacuation routes to promote the safety of residents and first responders. These are ongoing efforts that will be continued in the next fiscal year to cover new areas and maintain previously completed areas. To date, 17 miles of roads have received initial treatments.

Grants and Partnerships

In 2022, the Wildfire Team started offering a [Defensible Space Grant](#) in addition to the ongoing [direct assistance program](#). This grant was developed to assist homeowners with the financial burden of creating defensible space to lower wildfire impact on individual properties. Of the \$336,242 allocated towards resident assistance in FY 22-23, \$285,000 has been earmarked for grants, with the option to adjust as needed. This grant was developed to assist homeowners with the financial burden of creating defensible space to lower wildfire impact on individual properties. The grant program was made retroactive to 2021 to compensate property owners who took mitigation steps before the grant release. The work completed supports the resident's compliance with the vegetation standards described in the SRMC Chapter 4.12 or retrofitting homes with 7a construction building materials, which include items such as ember-resistant vents and dual-paned windows. This grant program is managed internally by the defensible space program and is funded through MWPA. Residential Grants are one of the ways, along with the Direct Assistance Program, that staff have allocated resources to directly support residents in their efforts to adapt to wildfire. Both the Grant Program and Direct Assistance Program will be continued in the 2023-24 budget.

In addition to providing grants to residents, staff have sought out grants at the State and Federal level to help fund wildfire mitigation projects. Recently, a fuel reduction project was completed through the FEMA Hazard Mitigation Grant Program, with the local match provided through MWPA funds. This strategy helps stretch MWPA funds to complete more projects. Staff continue to seek out grant funding with the intention of expanding the capacity to complete larger-scale and previously cost-prohibitive wildfire mitigation projects. San Rafael Fire was part of a group of agencies who applied for a large-scale Cal Fire Forest Health Grant in 2022 to address invasive species in the defensible space zone of the City's San Rafael Hill open space where a fire had previously occurred in late 2021. Although the grant was not awarded, staff will again seek a Cal Fire Wildfire Prevention Grant in 2023 to help supplement MWPA funding.

Public Outreach and Education

Community wildfire prevention is driven by a robust, community-specific outreach and education strategy. In 2022, San Rafael through the Office of Emergency Services (OES) expanded on its wildfire-specific community preparedness approach by updating and tailoring its outreach materials and resources to specific audiences. For instance, by contacting Homeowner's Associations (HOAs) directly, OES was able to understand their specific preparedness concerns to wildfire and develop custom materials. Staff have increased the availability of Spanish language material both in print and through Spanish language presentations with an emphasis on emergency alert registrations. Staff will continue to build on and expand community partnerships to reach residents previously less engaged and informed about wildfire



safety. Overall, OES carried out and supported over 15 community preparedness events throughout the city and its vision is to expand on this number in the coming year.

Partially funded by the MWPA, OES was able to hire a bilingual Spanish-speaking Community Preparedness Coordinator in the last quarter of 2022 to help address the growing need to engage local community organizations, businesses, and individuals in understanding the importance of wildfire preparedness. While a lot has yet to be accomplished, there are promising community outreach and education plans that will continue through the next 12 months, which include establishment of a Spanish language community preparedness pilot project in San Rafael, acquisition of wildfire community awareness systems, and expanding the number of sign-ups on Alert Marin, mainly from non-English-speaking residents.

#### Defensible Space Evaluations and Home Hardening

One of the primary objectives of the MWPA is to improve defensible space and home hardening. To this end, San Rafael has designed a defensible space program that allows for year-round engagement and support with increased staffing during the summer and fall months through a seasonal program. The City program includes both door to door, neighborhood to neighborhood evaluations, and also offers in person on site visits by requests. This hybrid approach has allowed staff to reach residents and gather data citywide, while remaining responsive to individual schedules and needs.

During a property evaluation, the inspection staff contact the property owner, evaluate the property for wildfire hazards, and provide a report to the property owner. This report provides specific details on steps the residents can take to adapt to wildfire and information on resources to assist. When speaking with residents, inspection staff are also able to provide education on topics such as evacuation preparedness, community assistance opportunities, vegetation plant choices, emergency alerts, and up-to-date information on larger wildfire projects. As an additional resource, each year staff directly mail defensible space and wildfire safety information to residents.

Since the establishment of the MWPA, staff have provided over 24,000 defensible space evaluations across the City. Since 2021, over 230 properties have been provided with direct assistance to help them comply with the citywide vegetation standards. In addition, San Rafael has directly issued over 171 defensible space and home hardening grants to residents, totaling over \$153,000.

Following two years of an education-first approach, staff have made the shift toward enforcement of high hazard properties that refuse to comply with the updated citywide vegetation standards. Prior to entering the enforcement process, staff attempt to contact residents multiple times in person, via letter, and email or phone (if available). Residents are offered a variety of support resources and provided information on how to request exemptions from the city ordinance. Prior to issuing fines, two additional contact attempts via letters are made. To date, this has included 770 pre-enforcement letters that notify properties that there is a hazard that requires action and inform the resident of community assistance options provided by the city such as free chippers, grants, and direct assistance. Following this, the properties receive a pre-citation notice that notifies owners they have 15 days to act before the property is moved to code enforcement for citation.

For the 2023-24 fiscal year, staff will continue the same approach with an expanded focus on ensuring compliance with SRMC Chapter 4.12 via the enforcement process. Staff anticipate this will be the last year of a large seasonal program, before transitioning to a maintenance program. The maintenance program will aim to visit each neighborhood every two to three years on a rotating basis. During that time,

on demand property evaluations will continue at an owner's request and staff will continue enforcement on properties with large hazards.

**COMMUNITY OUTREACH:**

Staff remain committed to engaging and informing the public through our prevention and adaptation efforts. This has included community meetings, virtual and in person trainings, direct mail campaigns, the use of signs on A-frames, and coordination with community and neighborhood leaders. In addition, staff continuously provide updates on the City and MWPA websites, and maintain a social media presence, and wildfire prevention direct emails and phone numbers. The MWPA Board, Operations Committee, and Technical Committee are all Brown Act compliant and meetings are open to the public for their information and feedback. Staff will continue their efforts to expand their Spanish language outreach.

**FISCAL IMPACT:**

There is no direct fiscal impact associated with this informational report.

**OPTIONS:**

Staff suggest the following options be considered on this matter:

1. Accept the report
2. Provide feedback

**RECOMMENDED ACTION:**

Accept the informational report and provide feedback to staff.

**ATTACHMENTS:**

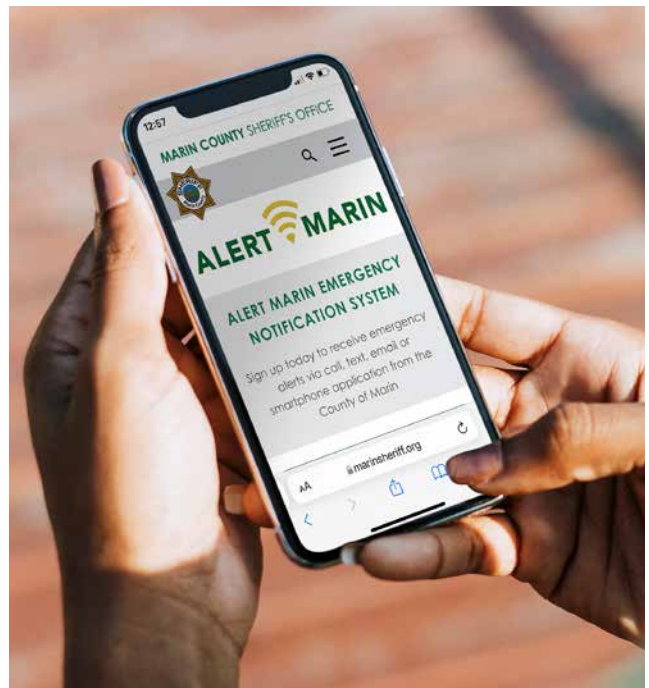
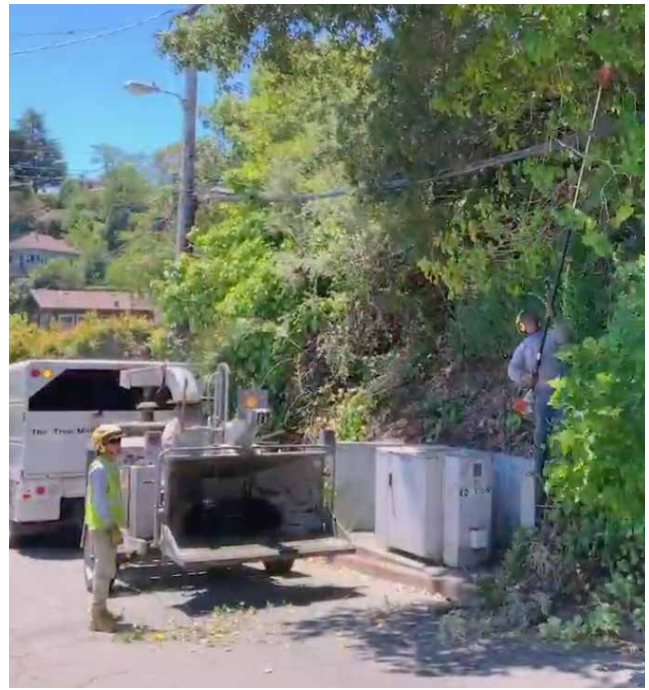
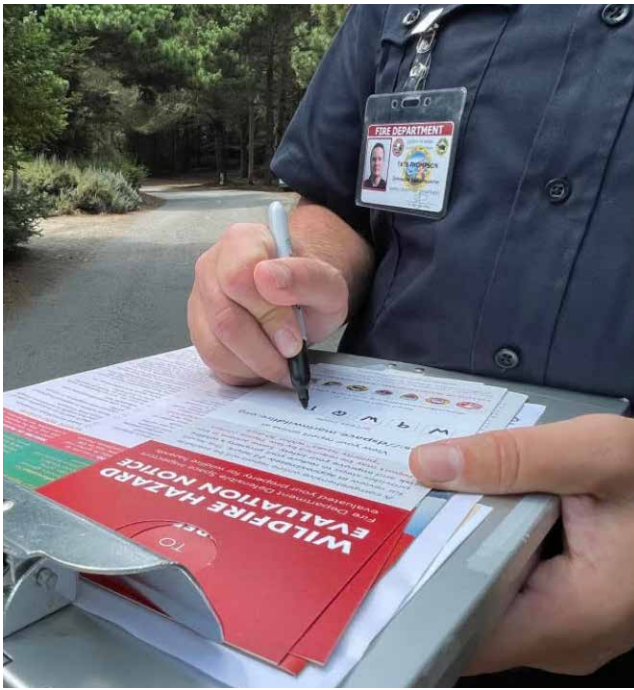
1. MWPA 2022-2023 Executive Summary

# MWPA 2022–2023 WORK PLAN

## Executive Summary







“The vast majority of our Marin residents live in areas that face potential near-term wildfire threats. Given this reality, MWPA is executing a systematic approach to transform Marin into a more resilient, fire-adapted community. The 2022-2023 Work Plan prioritizes a number of key initiatives that will reduce wildfire risks and help residents take the necessary steps to prepare themselves and their properties.”

– **Mark Brown**, Executive Officer of MWPA

# EXECUTIVE SUMMARY

The Board of Directors adopted the Marin Wildfire Prevention Authority (MWPA) Work Plan for 2022-23 on May 19, 2022. The Work Plan outlines approximately \$20 million in funding for 124 wildfire-related projects prioritized by the Marin Community Wildfire Protection Plan and the MWPA Strategic Plan. This Executive Summary is a condensed version of the Work Plan.

MWPA, a Joint Powers Authority (JPA) among 17 member agencies in Marin County, has determined that the most effective way to create a more fire-adapted future for Marin County is to pursue a multi-pronged “systems” approach.

The 2022-23 Work Plan contains proposals that address the following five goals: Vegetation Management and Local Wildfire Prevention Mitigation; Detection, Alert and Evacuation; Grants; Public Outreach and Education; and Defensible Space and Home Hardening.

Among the list of projects in 2022-2023 are these large wildfire safety initiatives:

- Investment of \$4 million toward home hardening and defensible space evaluations
- Implementation funding for 83 miles of new shaded fuel breaks in the greater Ross Valley and Novato areas, comprised of 3,298 total acres
- Vegetation management and maintenance of extensive open space areas and existing shaded fuel breaks
- Expansion of the resident grant program that includes up to \$5,000 for home hardening and \$1,000 for defensible space projects
- Investment in a new, science-based risk model to analyze the quantitative safety impact of fuel reduction, defensible space, home hardening, and other risk reduction activities in the MWPA's jurisdiction
- Addition of acoustic warning systems in targeted locations for evacuation and notification purposes

The development of the Annual Work Plan is a complicated process that takes place over the course

of six months. The process for development of the 2022-23 Plan kicked off in December of 2021. Major milestones included a total of six public meetings of the full MWPA Advisory/Technical Committee and four public meetings of the full MWPA Operations Committee. Additionally, seven ad hoc subcommittee meetings took place to explore details of specific topics. An online project portal was developed to streamline proposal development by MWPA's 17 member agencies.

A jurisdictional breakdown of the funding allocations for the projects includes:

- JPA-wide: 23 proposals totaling over \$4.5 million
- Novato: 20 proposals totaling over \$2 million
- San Rafael: 21 proposals totaling over \$2 million
- Central Marin: 22 proposals totaling over \$1.8 million
- Southern Marin: 23 proposals totaling over \$1.44 million
- West Marin: 15 proposals totaling \$827,000

The approval of the annual Work Plan adopts a set of priorities that the MWPA and member agencies intend to pursue. It is not a final approval of the proposals in the Plan as “projects” under the California Environmental Quality Act (CEQA). Rather, this action allows for fiscal year 2022-2023 funding to be released for certain activities starting July 1, the beginning of the next fiscal year.

View the full range of individual 2022-2023 Project Proposals found in the workplan on the MWPA website at [webportal.marinwildfire.org](http://webportal.marinwildfire.org).

The [2022-23 Work Plan](http://2022-23 Work Plan), containing all proposals, can be found at [marinwildfire.org](http://marinwildfire.org).

# CONTENTS

<b>EXECUTIVE SUMMARY</b> .....	<b>iii</b>
<b>INTRODUCTION</b> .....	<b>2</b>
<b>The Marin Wildfire Prevention Authority</b> .....	<b>2</b>
<b>Organizational Overview</b> .....	<b>2</b>
<b>MWPA Mission, Vision, and Goals</b> .....	<b>3</b>
<b>MWPA Guiding Principles</b> .....	<b>4</b>
<b>Background and Need for Action</b> .....	<b>5</b>
<b>Reducing Wildfire Risk to Residents, Businesses, and Visitors</b> .....	<b>5</b>
<b>Adapting to a Changing Climate</b> .....	<b>5</b>
<b>Funding and Program Area Overview</b> .....	<b>6</b>
Table 1. Program Areas .....	6
Table 2. Operational Areas .....	6
Table 3. Core Program Area Categories and Examples .....	7
Table 4. Defensible Space (D-Space) Evaluations and Home Hardening .....	8
Table 5. Local Wildfire Prevention Mitigation .....	8
Table 6. FY2022-2023 MWPA Budget Summary .....	9
<b>Methodology for Building the Fiscal Year 2022-2023 Work Plan</b> .....	<b>10</b>
<b>Guiding Documents</b> .....	<b>10</b>
<b>Guidance from MWPA Committees</b> .....	<b>10</b>
<b>Public Involvement</b> .....	<b>11</b>
<b>Proposals Included in the FY22-23 Work Plan</b> .....	<b>11</b>
<b>Next Steps</b> .....	<b>12</b>
<b>MWPA WORK PLAN PROPOSALS</b> .....	<b>13</b>
<b>Central Marin Zone</b> .....	<b>14</b>
<b>Central Marin Zone Work Plan Proposals</b> .....	<b>15</b>
City of Larkspur Local and D-Space Proposals .....	16
Kentfield Fire District Local and D-Space Proposals .....	16
Sleepy Hollow Fire District Local and D-Space Proposals .....	16
Town of Corte Madera Local and D-Space Proposals .....	17

Town of Fairfax Local and D-Space Proposals . . . . .	17
Town of Ross Local and D-Space Proposals. . . . .	17
Town of San Anselmo Local and D-Space Proposals . . . . .	18
Central Marin Core Proposals. . . . .	18
<b>West Marin Zone . . . . .</b>	<b>20</b>
<b>West Marin Zone Work Plan Proposals . . . . .</b>	<b>21</b>
Bollinas Fire District Local and D-Space Proposals . . . . .	22
Inverness Local and D-Space Proposals . . . . .	22
Marin County Fire Local and D-Space Proposals . . . . .	22
Stinson Beach Fire District Local and D-Space Proposals . . . . .	23
All West Marin Zone Core Proposals . . . . .	23
<b>Novato Zone . . . . .</b>	<b>24</b>
<b>Novato Zone Work Plan Proposals . . . . .</b>	<b>25</b>
All Novato Fire District Proposals . . . . .	26
<b>San Rafael Zone . . . . .</b>	<b>28</b>
<b>San Rafael Zone Work Plan Proposals . . . . .</b>	<b>29</b>
San Rafael Fire District Local and D-Space Proposals . . . . .	30
Marinwood Local and D-Space Proposals. . . . .	30
San Rafael Zone Core Proposals . . . . .	31
<b>Southern Marin Zone . . . . .</b>	<b>32</b>
<b>Southern Marin Zone Work Plan Proposals . . . . .</b>	<b>33</b>
Mill Valley Local and D-Space Proposals . . . . .	34
Muir Beach Community Services District Local and D-Space Proposals. . . . .	34
Southern Marin Fire District Local and D-Space Proposals . . . . .	35
All Southern Marin Zone Core Proposals . . . . .	35
<b>JPA-WIDE. . . . .</b>	<b>36</b>
JPA-wide Budget Summary. . . . .	36
<b>APPENDIX A: JPA OPERATIONAL BOUNDARIES . . . . .</b>	<b>38</b>
<b>APPENDIX B: REFERENCES . . . . .</b>	<b>39</b>



# INTRODUCTION

## The Marin Wildfire Prevention Authority

### Organizational Overview

The Marin Wildfire Prevention Authority (MWPA) consists of 17 member agencies covering nearly all of Marin County and was established by a voter approved parcel tax (2020 Measure C). MWPA is a joint powers authority<sup>1</sup> (JPA). The Board of Directors is composed of 17 voting member agencies within Marin County.

The organization is funded by a parcel tax, Measure C, commencing in the 2020/21 fiscal year and expiring in 2029/30. These funds, estimated to raise approximately \$20 million annually, are managed and distributed by MWPA to local agencies working in fire prevention and protection in Marin based on the priorities outlined in the Marin County Community Wildfire Protection Plan (CWPP) and other guiding documents.

The revenues raised by this tax are used to prevent and mitigate the risk of wildfires in Marin County.

<sup>1</sup> A joint powers authority (JPA) is an entity working under a joint exercise of powers agreement which allows for two or more public agencies – such as a city, county, school district, or special district (e.g., fire department, municipal utility, etc.) - to cooperatively provide services or exercise shared powers outside each agency’s normal jurisdiction.

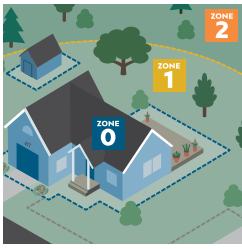
The following 17 agencies are voting members in MWPA:

- Bolinas Fire District
- City of Larkspur
- City of Mill Valley
- City of San Rafael
- County of Marin
- Inverness Public Utility District
- Kentfield Fire Protection District
- Marinwood Community Services District
- Muir Beach Community Services District
- Novato Fire Protection District
- Sleepy Hollow Fire Protection District
- Southern Marin Fire Protection District
- Stinson Beach Fire Protection District
- Town of Corte Madera
- Town of Fairfax
- Town of Ross
- Town of San Anselmo



17 agencies combine into 5 Geographic Zones





## MWPA Guiding Principles

### Operational Intent

As a public service agency dedicated to the safety of our community, agency staff and volunteers, the MWPA has outlined the following as recommended guiding principles and overall operational intent.

- Public safety and risk reduction
- Transparent and effective use of public funds
- Coordination and collaboration among agencies and residents
- Incentivize voluntary compliance through education and support before fines and penalties
- Ecologically sound practices
- Social and environmental equity

### A “Systems” Approach

The MWPA and its member agencies have determined that the most effective way to create a more fire-adapted future for Marin County is to pursue a multi-pronged “systems” approach. This approach recognizes that the challenges that the County of Marin faces are many and varied and, therefore, necessitate a holistic suite of solutions rather than any single “silver bullet.” Generally, these solutions include:

- **Informed residents:** The more knowledgeable Marin County’s residents are about wildfire and how to reduce risk, the better communities can be prepared. A key component of the MWPA’s

mission is funding public education through its member agencies and its nonprofit partner, Fire Safe Marin.

- **Home hardening:** Homes are major contributors to fire spread during urban conflagrations. If homes are more resistant to embers, the speed and intensity of fires will be decreased and fewer homes will be lost.
- **Defensible space/fire-smart landscaping:** Properly managing the landscaping around a home greatly reduces the risk to the home.
- **Escape route and systems improvements:** The MWPA is working with each of its member agencies to study barriers to safe evacuation and make physical and systematic improvements to evacuation routes to allow for safer evacuations.
- **Vegetation management:** In partnership with fire agencies, land management agencies, towns and cities, the MWPA is building a comprehensive vegetation management program guided by our community wildfire protection plan and other prioritization efforts, the stewardship goals of our partner agencies, and input from our environmental community. This program has begun addressing Marin County’s backlog of vegetation management on public and private lands needed to address fire risk and provide benefits to ecosystem health and long-term resilience of local landscapes.

## Background and Need for Action

### Reducing Wildfire Risk to Residents, Businesses, and Visitors

Northern California has seen some of the deadliest and most destructive wildfires in recorded history since 2017. Sonoma and Napa counties lost over 5,000 homes during the North Bay Fires of 2017. In 2018, the Mendocino Complex, Carr, and Camp fires burned hundreds of thousands of acres and destroying thousands of structures. In 2020, a rare dry lightning weather event followed by strong easterly winds ignited and fueled hundreds of fires throughout northern California, burning a record 2.4 million acres by early October.

Marin County has not yet seen this level of wildfire activity in recent decades but is no less at-risk. Most structures in Marin County are vulnerable to wildfire threats due to their location and lack of hardening against embers and most communities in Marin County are located in areas that face potential near-term wildfire threat. According to an assessment by CALFIRE, approximately 82 percent of Marin County's land (nearly 313,000 acres) is within a fire hazard severity zone ranking of moderate, high, or very high (Marin County Fire Department, 2020). Bold action is needed to help Marin County become more fire resilient.

A significant portion of residents are especially vulnerable due to factors such as age and/or lack of mobility. For example, approximately 13.5 percent of residents are age 65 or over according to the 2020 census (U.S. Census Bureau, 2020). The tragic loss of life and property in the town of Paradise during the 2018 Camp Fire further demonstrates such vulnerability as many of the victims were older adults and many were unable to flee due to a lack of mobility (Ramsey, 2020).

Most structures in Marin County are vulnerable to wildfire threats due to their location and lack of hardening against embers and most communities in Marin County are located in areas that face potential near-term wildfire threat.

### Adapting to a Changing Climate

Wildfire risk is predicted to increase in Marin County and throughout the region due to climate change and other factors (California Natural Resources Agency, 2018). Increasing emissions from wildfire further accelerates this change. In fact, emissions from California wildfires in 2020 were nearly an order of magnitude above the average annual emissions in the two previous decades (well over 100 million metric tons (MMT) CO<sub>2</sub> in 2020 compared to an annual average of 14 MMT CO<sub>2</sub> from 2000 to 2019) (California Air Resources Board, 2020). While lack of action will continue to deepen this feedback loop, proper vegetation management can help sequester more carbon and secure remaining carbon stocks. The California Forest Carbon Plan and other sources state that unmanaged, overcrowded forestland sequesters significantly less carbon than a landscape with tree densities that more closely resemble conditions before modern fire suppression. Remaining trees are healthier and more resilient to drought, fire, and disease (California Forest Climate Action Team, 2018).

While the Work Plan does not propose removal of significant numbers of mature trees, various proposals include reducing the density of weedy understory species and immature trees that compete with mature trees and act as ladder fuel in an unnaturally crowded ecosystem. This work will result in benefits in terms of forest health, carbon sequestration, potential for crown fire and reduced fire severity. Such projects reduce risks to communities, to ecosystems, and reduce the potential for fires in Marin County to contribute to global carbon emissions.

## Funding and Program Area Overview

Measure C provides the funding for MWPA programs. Measure C is expected to raise an estimated \$20M annually. Per the initiative’s language and MWPA adopted ordinance, it divides the use of these funds into six categories or programmatic areas each containing specific bodies of work. The first four categories are known as the Core. There are two additional categories: Defensible Space Evaluations and Home Hardening can be shared services or local control; and Local Wildfire Prevention Mitigation which is specifically identified for local control. These program areas are identified in Table 1. The MWPA’s 17 member agencies have been grouped into five operational boundaries identified in Table 2 and displayed in the map to the right and in [Appendix A: JPA Operational Boundaries](#). Details describing these program areas are included in Tables 3 through 6. Anticipated funding by agency and category is described in Table 6.



**Table 1. Program Areas**

Program Area	Percent of Measure C Funds
<b>JPA Core:</b> <b>Cross-Jurisdictional Projects</b> <ul style="list-style-type: none"> <li>• Wildfire Detection, Notification &amp; Evacuation Improvements</li> <li>• Vegetation Management &amp; Fire Hazard Reduction</li> <li>• Grants Management</li> <li>• Public Education</li> </ul>	<b>60%</b>
<b>Defensible Space Evaluations and Home Hardening</b>	<b>20%</b>
<b>Community-Level Wildfire Prevention Mitigation</b>	<b>20%</b>

**Table 2. Operational Areas**

Agency	Zone
Novato Fire Protection District	<b>Novato</b>
City of San Rafael Marinwood CSD	<b>San Rafael Area</b>
City of Larkspur Kentfield Fire District Sleepy Hollow Fire District Town of Corte Madera Town of Fairfax Town of Ross Town of San Anselmo	<b>Central</b>
City of Mill Valley Muir Beach CSD Southern Marin Fire District	<b>Southern</b>
Bolinas Fire District County of Marin Fire Inverness Fire District Stinson Beach Fire District	<b>West</b>

\*County of Marin Fire has pockets of jurisdiction in all 5 zones.



**Table 3. Core Program Area Categories and Examples**

<b>Area Categories</b>	<b>Emphasis</b>	<b>Project Examples</b>
<b>Detection, Notification, Evacuation</b>	Wildfire Detection	Detection Cameras, lookouts, linking to satellite systems, aircraft and vehicle patrols
<b>Detection, Notification, Evacuation</b>	Notification	Alert Marin, WEA, EAS, NOAA Weather Radios, Sirens, Pulse Point, Hi-Lo Vehicle Sirens, Red Flag Warning Signage
<b>Detection, Notification, Evacuation</b>	Evacuation	Evacuation Route Study, Mutual Threat Zone Maps, Parking Boxes, Public Evacuation Maps, Choke Point Reduction, Evacuation Route Signage, Evacuation Drills
<b>Vegetation Management and Fire Hazard Reduction</b>	Physical Projects	Evacuation Route Clearance, Shaded fuel breaks, defensible space work, grazing, fuel breaks, fire road maintenance, broom pulling, invasive plant control, chipper days, fire prone vegetation removal, hazardous tree removal, replanting, example gardens and homes
<b>Vegetation Management and Fire Hazard Reduction</b>	Planning Projects	CWPP update, update WUI maps, ordinance updates, compliance protocols
<b>Vegetation Management and Fire Hazard Reduction</b>	People and Infrastructure	Fuels Crews, Temporary housing for work crews, vehicles, equipment needs: masticators, chippers, saws, hand tools, project management and supervision, private contractors, volunteers
<b>Grant Management</b>	Local	Matching or direct needs based to qualifying individuals (seniors, AFN, etc.)
<b>Grant Management</b>	State	CAL FIRE CA Climate Investments Fire Prevention Grant Program, Fire Prevention and Forest Health
<b>Grant Management</b>	Federal	Hazard Mitigation Grants, Fire Prevention and Safety Grants, FEMA Pre-Disaster mitigation Program
<b>Grant Management</b>	Private	PG&E, NFPA Firewise, Donations
<b>Public Education</b>	Stakeholder Collaboration	FPOs, ESP, WMS & Seasonal inspectors, residents, public inquiries, Master Gardeners, FSM
<b>Public Education</b>	Print Media	Mass Media, brochures, handouts, mailers, newsletters, op-eds, bi-lingual
<b>Public Education</b>	Digital Media	Social media, PSA for movie theaters, Social networking sites, Website
<b>Public Education</b>	Trainings	Live webinars, workshops for residents, & professionals, schools, bi-lingual

**Table 4.**

<b>Defensible Space (D-Space) Evaluations and Home Hardening</b>
<p>Per the JPA agreements, the 17 MWPA agencies have the option to opt into a MWPA shared seasonal defensible space inspector program, or opt out into a locally controlled of D-Space/Home Hardening Evaluation program, or establish a hybrid model. Agencies opting to maintain local control will receive their proportionate amount of the 20% total JPA budgeted to defensible space and home hardening.</p> <p>With the approval of the work plan, agencies will be able to immediately begin implementing or expanding their existing Defensible Space and Home Hardening programs.</p> <p>For this year, the Defensible Space and Home Hardening programs will be established as follows:</p> <ol style="list-style-type: none"><li>1) Novato Fire Protection District</li><li>2) City of San Rafael and Marinwood CSD</li><li>3) Bolinas Fire District, City of Larkspur, County of Marin Fire, Muir Beach CSD, Inverness Fire District, Kentfield Fire District, Sleepy Hollow Fire District, Stinson Beach Fire District, Town of Corte Madera, Town of Fairfax, Town of Ross, and Town of San Anselmo</li><li>4) City of Mill Valley and Southern Marin Fire District</li></ol>

**Table 5.**

<b>Local Wildfire Prevention Mitigation</b>
<p>The final 20% of Measure C funds are reserved for local jurisdiction control to address unique needs or projects not approved as part of the overall Core function. These projects remain consistent with the purpose of the MWPA and provide a higher level of service than was previously available.</p> <p>Examples of potential projects include but are not limited to: Ignition Reduction Efforts, Community Wildfire Demonstration Gardens, Community Wildfire Home Hardening Demonstration Props, Electronic Message Boards, Essential Facility Hardening Projects, Fuel Crew Expansion, Additional targeted vegetation management, street widening for choke point reduction, evacuation drills, NOAA Weather Radios, Cost-share programs for resident home hardening for vegetation removal projects, or the expansion and acceleration of any of the other programmatic areas identified within the JPA Core or Defensible Space and Home Hardening.</p>



Defensible space creation and removal of juniper in San Rafael





**Table 6.**

FY2022-2023 MWPA Budget Summary						
Zone	Agency	Local (20%)	D-Space (20%)	Core (60% - Admin Costs)	Core Budget for JPA-wide Proposals	Core Budget per Zone
Central Marin	City of Larkspur	\$216,858.47	\$216,858.47			
Central Marin	Kentfield Fire	\$137,952.23	\$137,952.23			
Central Marin	Sleepy Hollow Fire District	\$47,314.59	\$47,314.59			
Central Marin	Town of Corte Madera	\$170,466.33	\$170,466.33			
Central Marin	Town of Fairfax	\$102,070.24	\$102,070.24			
Central Marin	Town of Ross	\$56,393.37	\$56,393.37			
Central Marin	Town of San Anselmo	\$190,691.19	\$190,691.19			<b>\$1,485,333.69</b>
West Marin	Bolinas Fire District	\$24,889.39	\$24,889.39			
West Marin	Inverness Volunteer Fire Department	\$21,171.88	\$21,171.88			
West Marin	Marin County Fire Department	\$339,913.80	\$339,913.80			
West Marin	Stinson Beach Fire District	\$27,844.78	\$27,844.78			<b>\$394,336.38</b>
Novato	Novato Fire District	\$1,006,437.26	\$1,006,437.26			<b>\$1,597,062.33</b>
San Rafael	City of San Rafael	\$969,009.79	\$969,009.79			
San Rafael	Marinwood Community Services District	\$68,346.54	\$68,346.54			<b>\$1,886,242.35</b>
Southern Marin	City of Mill Valley	\$247,319.23	\$247,319.23			
Southern Marin	Muir Beach Community Services District	\$6,319.95	\$6,319.95			
Southern Marin	Southern Marin Fire District	\$468,238.58	\$468,238.58			<b>\$1,209,298.23</b>
JPA-wide Core					\$4,501,068	
<b>Totals</b>		<b>\$4,101,237.60</b>	<b>\$4,019,212.85*</b>	<b>\$11,073,341.52</b>	<b>\$4,501,068</b>	<b>\$6,572,272.98</b>
<b>Core (JPA-wide Core + Zone-specific Core)</b>						<b>\$11,073,341.52</b>
<b>Total Measure C (Local + D-Space + Core + Admin)</b>						<b>\$20,506,188.00</b>

\*minus 2% holdback for abatement.

# Methodology for Building the Fiscal Year 2022-2023 Work Plan

This MWPA 2021 Fiscal Year 2022-2023 Work Plan (FY22-23 Work Plan) builds upon existing fire protection, prevention, and mitigation efforts as well as guidance from existing guiding documents, MWPA committees and other experts, and members of the public.

## Guiding Documents

The MWPA continues to build its overall approach through review of the science, strategy, and case studies encapsulated in a variety of existing documents. A sample of the documents used to inform strategy are included below.

In November 2017, the Marin County Board of Supervisors created a subcommittee to study lessons learned from the North Bay Fires. This subcommittee conducted a series of interviews with Sonoma County officials, collected input from the public, and conducted a review of Marin County's existing structures and systems. The subcommittee created a report entitled, "Lessons Learned: 2017 North Bay Fire Siege" (Marin County Fire Department, 2018) which outlines the main findings and areas for improvements to decrease the County's vulnerability and increase fire preparedness.

A 2018 NFPA report entitled, "Reducing Wildfire Risks: 3 Powerful Tips to Move People to Action" (National Fire Prevention Association, 2018) reports the results of a survey to determine what helps spur the public to take action to reduce wildfire risk.

In 2019, the 2018-2019 Marin County Civil Grand Jury Report released a report entitled: "Wildfire Preparedness: A New Approach" (Marin County Civil Grand Jury, 2019) which identified four areas of vulnerability including vegetation management, educating the public, alerts, and evacuations. Further, the report recommends creation of a joint powers authority to coordinate a comprehensive, consistent approach to pre-ignition planning using tax revenue.

The Marin County Community Wildfire Protection Plan (CWPP) (Marin County Fire Department, 2020)

provides a scientifically based assessment of wildfire hazard and threat to homes in the wildland urban interface (WUI) of Marin County. The CWPP includes the following key elements: vegetation management; improvements to alerts, warning systems, and evacuations; public education; grants; defensible space evaluations; and local wildfire prevention mitigation.

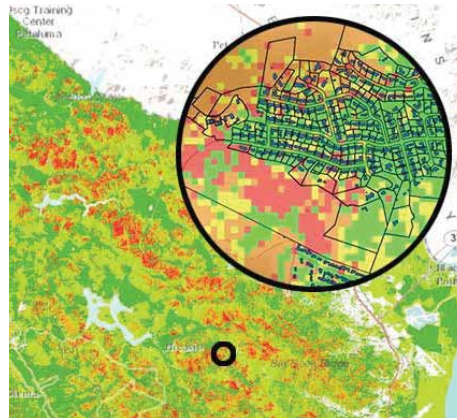
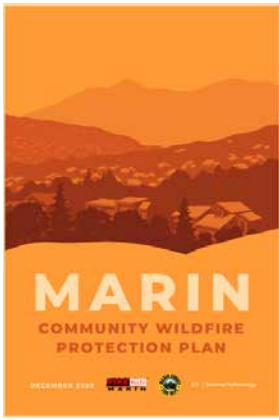
## Guidance from MWPA Committees

The Operations Committee is composed of agency staff from each of the MWPA member agencies. Representatives on the Operations Committee generally include a balance of executive/administrative and fire expertise individuals, including several fire chiefs and city managers. The Operations Committee is responsible for creating a recommended annual budget as well as the recommended annual Work Plan.

Each year, the Operations Committee determines an overall approach to guide development of the next annual Work Plan. On January 13, 2022 the Operations Committee determined an overall approach for the FY 2022-2023 Work Plan:

- Continue the "House Out" approach;
- Increase the funding and variety of resident grant programs;
- Prioritize shaded fuel breaks adjacent to communities;
- Partner with insurance companies and the Insurance Institute for Business & Home Safety to help avoid insurance cancellations;
- Increase public education, particularly to new audiences.

The Advisory/Technical Committee (ATC) works with the Operations Committee and provides expert advice and recommendations regarding how MWPA programs are developed and implemented. The ATC is comprised of one technical staff member from each MWPA agency. Additional at-large, non-voting committee members include Marin Municipal Water



The Marin Community Wildfire Protection Plan emphasizes the importance of individual homes in preventing disaster. This “House Out” approach means being prepared to evacuate, hardening homes, and creating defensible space.

District (MMWD), Marin County Open Space District (MCOSD), National Park Service, California State Parks, and Ecologically Sound Partnership.

Voting members of the ATC and associated member agency staff drafted and submitted proposals for FY22-23 Work Plan reflecting the overall approach created by the Operations Committee. Non-voting members of the ATC provided input.

Draft project descriptions, maps, goals, objectives, budgets, and other data were made public and simultaneously reviewed by the ATC and the Operations Committee to ensure that they provide a balanced approach, both in terms of physical distribution across the landscape as well as among MWPA Board-determined goals and objectives.

### Public Involvement

Proposals included in the FY22-23 Work Plan were discussed during several public meetings of the ATC and Operations Committee prior to Board of Directors consideration. The ATC discussed proposals during four separate public meetings and received public comment. The Operations Committee discussed proposals during three public meetings and received public comment.

Community stakeholder input is also derived from the MWPA Citizens’ Oversight Committee that reviews MWPA’s spending on an annual basis as well as the Ecologically Sound Practices Partnership (ESP Partnership) that has prepared draft best practices for wildfire mitigation efforts.

### Proposals Included in the FY22-23 Work Plan

This Work Plan outlines proposed projects to further the MWPA’s mission, vision, and goals within each of the geographic zones for the next fiscal year. Additionally, Work Plan proposals reflect the overall strategy provided by the Operations Committee and described above. To see a full list of project proposals in the FY22-23 Work Plan, visit [webportal.marinwildfire.org](http://webportal.marinwildfire.org) or download the [2022-23 Work Plan](#).

The project proposals include staff and funding to support the house-out approach for wildfire risk reduction. Funding would be allocated to home hardening and defensible space inspections as well as support for those residents working to implement the recommendations provided during those inspections. That support includes grants to reimburse residents who pay contractors for help and direct assistance for low-income residents to receive help directly without the need to pay up front. The Work Plan also includes a free chipper program for residents performing their own defensible space work. Additionally, MWPA will ramp up its work with insurance companies to help avoid insurance cancellations.

Evacuation and alert systems are another key component of the FY22-23 Work Plan. Proposals include auditory alert systems, online evacuation management systems, as well as a study of barriers to safe evacuations which will inform future projects.

Proposals also include vegetation management to reduce risk around key evacuation routes and vulnerable communities. Roadside vegetation management will reduce flame lengths adjacent to important evacuation routes to improve the likelihood that residents can get out safely during a wildfire. Shaded fuel breaks, goat grazing, and other vegetation management activities near homes are proposed in order to modify fire behavior; generally, such activities reduce fire intensity and severity, rate of spread, and potential for burning embers to be carried downwind into adjacent communities. These activities improve the chances that residents can evacuate safely and that firefighters can be successful. While no vegetation management is guaranteed to stop a fire during extreme conditions, these activities greatly improve the chances of stopping a fire during most weather conditions.

Proposals are also included to provide funding for less tangible, but equally important initiatives. For example, the MWPA would work with partners to expand public education beyond the usual audiences and measure success in these efforts. The Knowledge and Attitudes Survey will help identify opportunities to reach new audiences and kickoff a larger conversation around diversity, equity and inclusion for wildfire risk reduction efforts. Measuring benefits of on-the-ground projects such as vegetation management is another effort included in the FY22-23 Work Plan. In order to implement many of the proposals included in the Work Plan, particularly vegetation management, environmental compliance is needed. This effort is included as a single proposal rather than attached to each individual proposal to streamline funding of required environmental compliance studies.

## Next Steps

The recommendations in this Work Plan, while significant, represent only a fraction of the work that needs to be done to help Marin County become more resilient to wildfire. Member agencies, partner agencies, stakeholders from all sectors, and residents of Marin County must adopt an “all of the above” approach to protecting public safety and maintaining the health of Marin County’s abundant open space lands and native ecosystems.

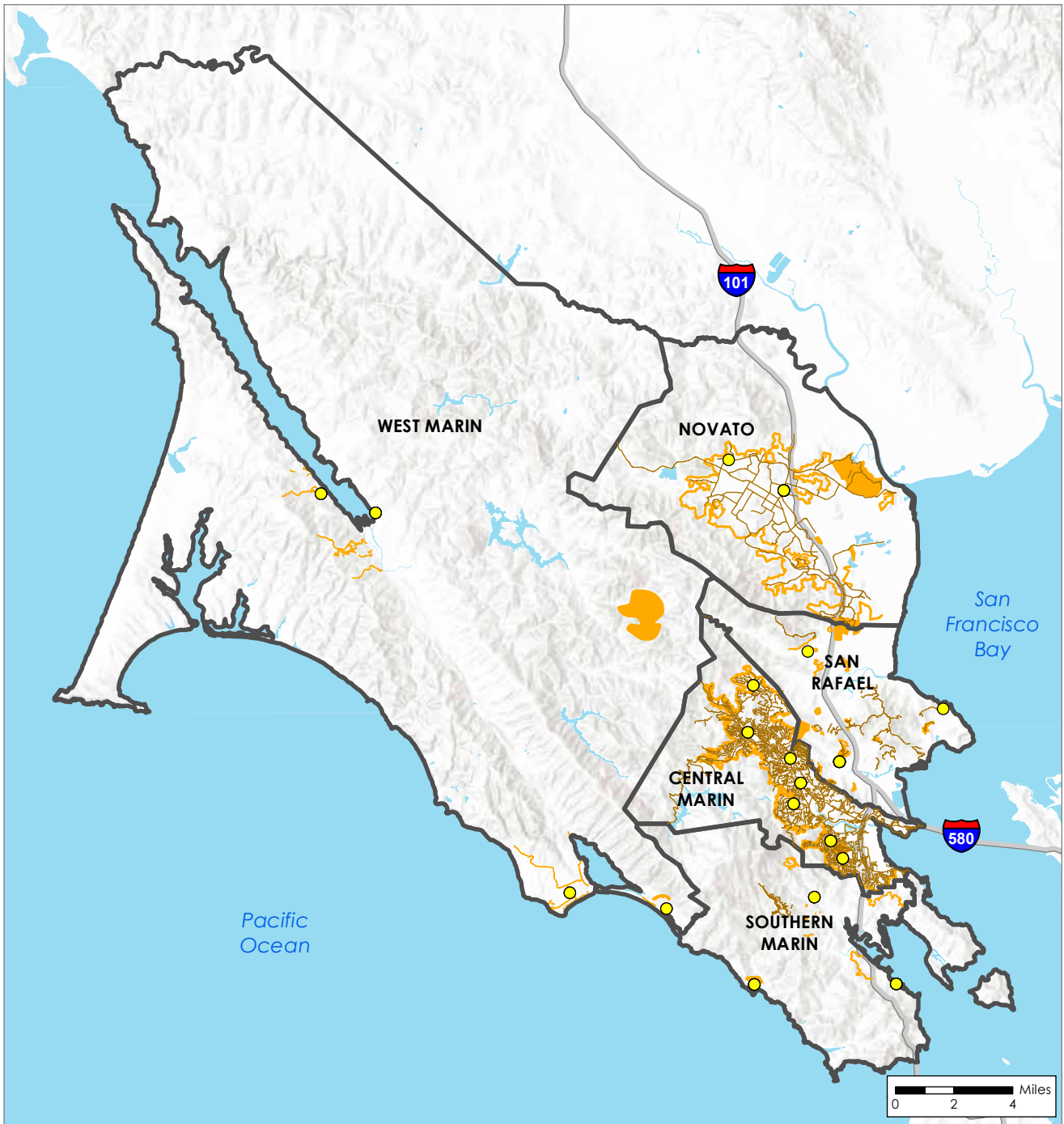
MWPA Board of Directors approval of the annual Work Plan as a set of priorities that the MWPA and member agencies intend to pursue, is not a final approval of the proposals in the Work Plan as “projects” under the California Environmental Quality Act (CEQA). Rather, this action allows for fiscal year 2022-2023 funding to be released for certain activities starting July 1, the beginning of the next fiscal year. The 20 percent of the Measure C funding related to Defensible Space Evaluations & Home Hardening may be distributed to member agencies starting July 1, in addition to the 20 percent for Local Wildfire Prevention Mitigation.

The remaining 60 percent of funding may be distributed for core proposals that do not require environmental compliance. Core proposals that require environmental compliance pursuant to federal, state, and local laws and regulations may receive funding for implementation once environmental compliance is complete and has been acknowledged by the Board. Therefore, this initial approval is not a “project” under the CEQA, because it does not involve an activity which has the potential to cause a direct or reasonably foreseeable indirect physical change in the environment. (Cal. Pub. Res. Code § 21065).

“The 2022-2023 Work Plan represents many months of collaboration among the MWPA’s 17 member agencies, community stakeholders, and the general public. Together, we have identified 124 projects to begin implementing over the course of the next year. Each of these projects will make a significant contribution toward our multi-faceted approach to fire prevention and safety throughout the county.”





– **Bruce Goines, MWPA Board President**

# MWPA WORK PLAN PROPOSALS



## Legend

Scale = 1:355,000  
Created: 5/18/2022

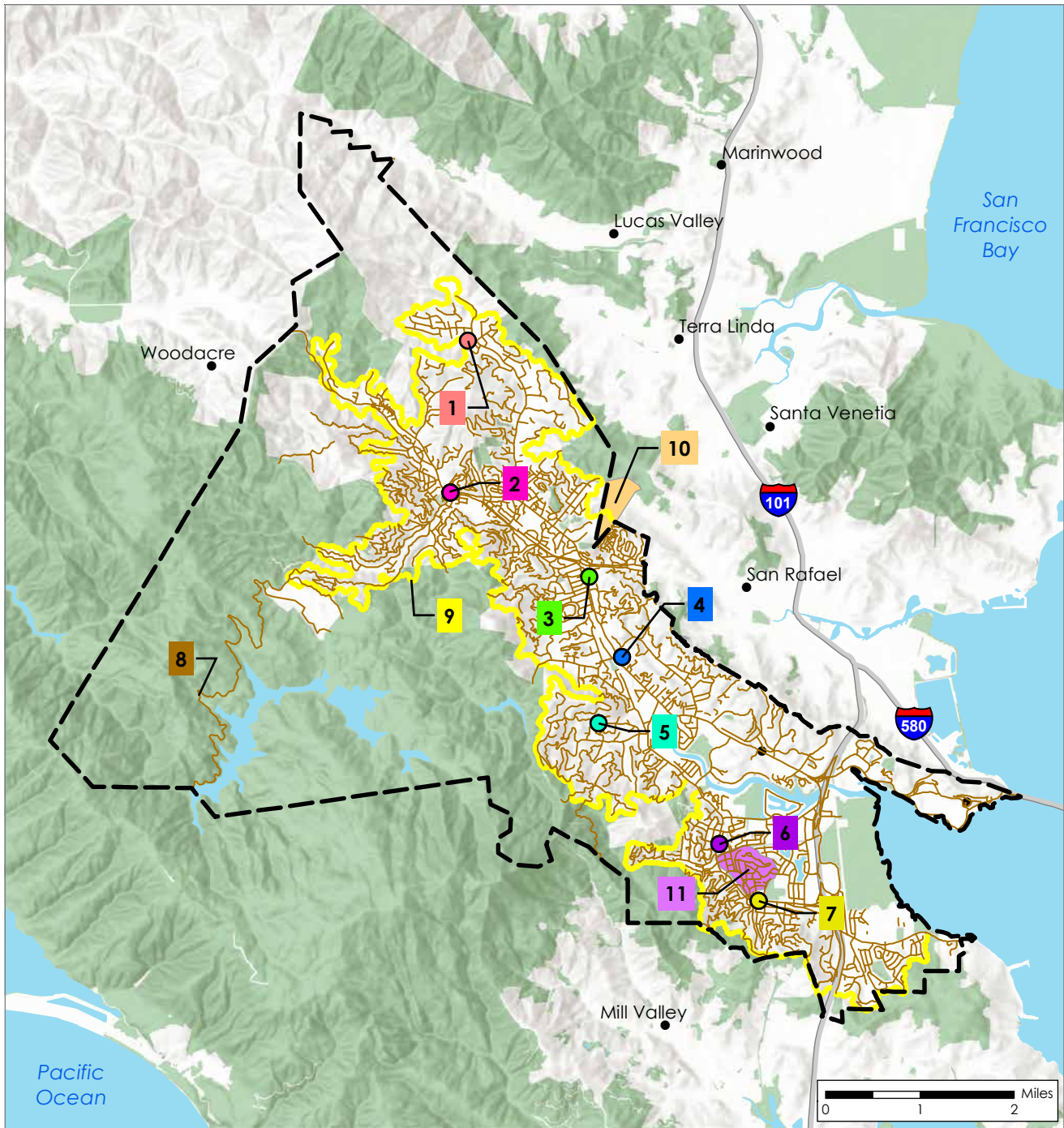
-  Proposal Location (pin)
-  Proposal Location (linear)
-  Proposal Location (polygon)
-  MWPA Zone





# MWPA WORK PLAN PROPOSALS CENTRAL MARIN ZONE

For detailed proposal information, go to portal:  
[webportal.marinwildfire.org](http://webportal.marinwildfire.org)



### Legend

Scale = 1:110,000  
Created: 5/18/2022



### Proposal Locations

- Sleepy Hollow\*
- Fairfax\*
- San Anselmo\*
- Ross\*
- Kentfield\*
- Larkspur\*
- Corte Madera\*

- Central Marin Zone Evacuation Route Core Project - Implementation FY2022-2023
- Greater Ross Valley Shaded Fuel Break
- Palm Hill Evacuation Route Parking Boxes
- Ridgewood Shaded Fuel Break Planning Central Zone Share
- Central Marin Zone

\*Location includes multiple projects.

## Central Marin Zone Work Plan Proposals

Map Key	Draft Proposal Name	Lead Agency	D-Space Budget	Local Budget	Core Budget
Key 1	Sleepy Hollow Defensible Space Inspection and Evaluation Program	Sleepy Hollow	x		
Key 1	Sleepy Hollow Local D-Space Grants	Sleepy Hollow		x	
Key 2	Fairfax Defensible Space Inspection and Evaluation Program	Fairfax	x		
Key 2	Fairfax Invasive Vegetation Treatment Program	Fairfax		x	
Key 3	San Anselmo Defensible Space Inspection and Evaluation Program	San Anselmo	x		
Key 3	San Anselmo Invasive Vegetation Treatment Program	San Anselmo		x	
Key 4	Ross Defensible Space Inspection and Evaluation Program	Ross	x		
Key 4	Greater Ross Valley Defensible Space and Home Hardening Evaluation and Inspection Program – Supplemental Funding	MWPA	x		
Key 4	Ross Invasive Vegetation Treatment Program	Ross		x	
Key 5	Kentfield Defensible Space Inspection and Evaluation Program	Kentfield	x		
Key 5	Kentfield Defensible Space Voluntary Abatement Program	Kentfield		x	
Key 5	Invasive Vegetation Treatment Program – Kentfield	Kentfield		x	
Key 6	Larkspur Defensible Space Inspection and Evaluation Program	Larkspur	x		
Key 6	Larkspur Defensible Space Voluntary Abatement Program	Larkspur		x	
Key 6	Larkspur Invasive Vegetation Treatment Program	Larkspur		x	
Key 7	Corte Madera Defensible Space Inspection and Evaluation Program	Corte Madera	x		
Key 7	Corte Madera Defensible Space Voluntary Abatement Program	Corte Madera		x	
Key 7	Corte Madera Invasive Vegetation Treatment Program	Corte Madera		x	
Key 8	Central Marin Zone Evacuation Route Core Project – Implementation FY2022-2023	MWPA			x
Key 9	Greater Ross Valley Shaded Fuel Break	MWPA			x
Key 10	Ridgewood Shaded Fuel Break Planning – Central Zone Share	Corte Madera			x
Key 11	Palm Hill Evacuation Route Parking Boxes	Larkspur		x	



# Central Marin Zone Proposal Budget Summary

## City of Larkspur Local and D-Space Proposals

Proposal Title	Lead Member Agency	Program Area	Local	D-Space	Core
Larkspur Invasive Vegetation Treatment Program	City Of Larkspur	Local	\$100,000		
Palm Hill Evacuation Route Parking Boxes	City Of Larkspur	Local	\$16,858		
Larkspur Defensible Space Voluntary Abatement Program	City Of Larkspur	Local	\$100,000		
Larkspur Defensible Space Inspection and Evaluation Program	City Of Larkspur	Defensible Space		\$216,858	
	<b>Total</b>		<b>\$216,858</b>	<b>\$216,858</b>	
	<b>Approx Budget</b>		<b>\$216,858</b>	<b>\$216,858</b>	
	<b>Remaining</b>		<b>\$0</b>	<b>\$0</b>	

## Kentfield Fire District Local and D-Space Proposals

Proposal Title	Lead Member Agency	Program Area	Local	D-Space	Core
Kentfield Invasive Vegetation Treatment Program	Kentfield Fire District	Local	\$68,976		
Kentfield Defensible Space Voluntary Abatement Program	Kentfield Fire District	Local	\$68,976		
Kentfield Defensible Space Inspection and Evaluation Program	Kentfield Fire District	Defensible Space		\$137,952	
	<b>Total</b>		<b>\$137,952</b>	<b>\$137,952</b>	
	<b>Approx Budget</b>		<b>\$137,952</b>	<b>\$137,952</b>	
	<b>Remaining</b>		<b>\$0</b>	<b>\$0</b>	

## Sleepy Hollow Fire District Local and D-Space Proposals

Proposal Title	Lead Member Agency	Program Area	Local	D-Space	Core
Sleepy Hollow Local D-Space Grants	Sleepy Hollow Fire Protection District	Local	\$47,315		
Sleepy Hollow Defensible Space Inspection and Evaluation Program	Sleepy Hollow Fire Protection District	Defensible Space		\$47,315	
	<b>Total</b>		<b>\$47,315</b>	<b>\$47,315</b>	
	<b>Approx Budget</b>		<b>\$47,315</b>	<b>\$47,315</b>	
	<b>Remaining</b>		<b>\$0</b>	<b>\$0</b>	

### Town of Corte Madera Local and D-Space Proposals

Proposal Title	Lead Member Agency	Program Area	Local	D-Space	Core
Corte Madera Invasive Vegetation Treatment Program	Town Of Corte Madera	Local	\$85,233		
Corte Madera Defensible Space Voluntary Abatement Program	Town Of Corte Madera	Local	\$85,233		
Corte Madera Defensible Space Inspection and Evaluation Program	Town Of Corte Madera	Defensible Space		\$170,466	
<b>Total</b>			<b>\$170,466</b>	<b>\$170,466</b>	
<b>Approx Budget</b>			<b>\$170,466</b>	<b>\$170,466</b>	
<b>Remaining</b>			<b>\$0</b>	<b>\$0</b>	

### Town of Fairfax Local and D-Space Proposals

Proposal Title	Lead Member Agency	Program Area	Local	D-Space	Core
Fairfax Invasive Vegetation Treatment Program	Town Of Fairfax	Local	\$102,070		
Fairfax Defensible Space Inspection And Evaluation Program	Town Of Fairfax	Defensible Space		\$102,070	
<b>Total</b>			<b>\$102,070</b>	<b>\$102,070</b>	
<b>Approx Budget</b>			<b>\$102,070</b>	<b>\$102,070</b>	
<b>Remaining</b>			<b>\$0</b>	<b>\$0</b>	

### Town of Ross Local and D-Space Proposals

Proposal Title	Lead Member Agency	Program Area	Local	D-Space	Core
Ross Invasive Vegetation Treatment Program	Town Of Ross	Local	\$56,393.37		
Ross Defensible Space Inspection and Evaluation Program	Town Of Ross	Defensible Space		\$56,393	
<b>Total</b>			<b>\$56,393</b>	<b>\$56,393</b>	
<b>Approx Budget</b>			<b>\$56,393</b>	<b>\$56,393</b>	
<b>Remaining</b>			<b>\$0</b>	<b>\$0</b>	

## Central Marin Zone Proposal Budget Summary

### Town of San Anselmo Local and D-Space Proposals

Proposal Title	Lead Member Agency	Program Area	Local	D-Space	Core
San Anselmo Invasive Vegetation Treatment Program	Town Of San Anselmo	Local	\$190,691		
San Anselmo Defensible Space Inspection and Evaluation Program	Town Of San Anselmo	Defensible Space		\$190,691	
<b>Total</b>			<b>\$190,691</b>	<b>\$190,691</b>	
<b>Approx Budget</b>			<b>\$190,691</b>	<b>\$190,691</b>	
<b>Remaining</b>			<b>\$0</b>	<b>\$0</b>	

### Central Marin Core Proposals

Proposal Title	Lead Member Agency	Program Area	Local	D-Space	Core
Ridgewood Shaded Fuel Break Planning – Central Zone Share	MWPA	Core			\$75,000
Central Marin Zone Evacuation Route Core Project – Implementation FY2022-2023	MWPA	Core			\$210,334
Greater Ross Valley Shaded Fuel Break	MWPA	Core			\$900,000
Greater Ross Valley Defensible Space and Home Hardening Evaluation And Inspection Program – Supplemental Funding	MWPA	Core			\$300,000
<b>Total</b>					<b>\$1,485,334</b>
<b>Approx Budget</b>					<b>\$1,485,334</b>
<b>Remaining</b>					<b>\$0</b>





Shaded Fuel Break in Larkspur: Before and After



Shaded Fuel Break in Corte Madera: Before and After

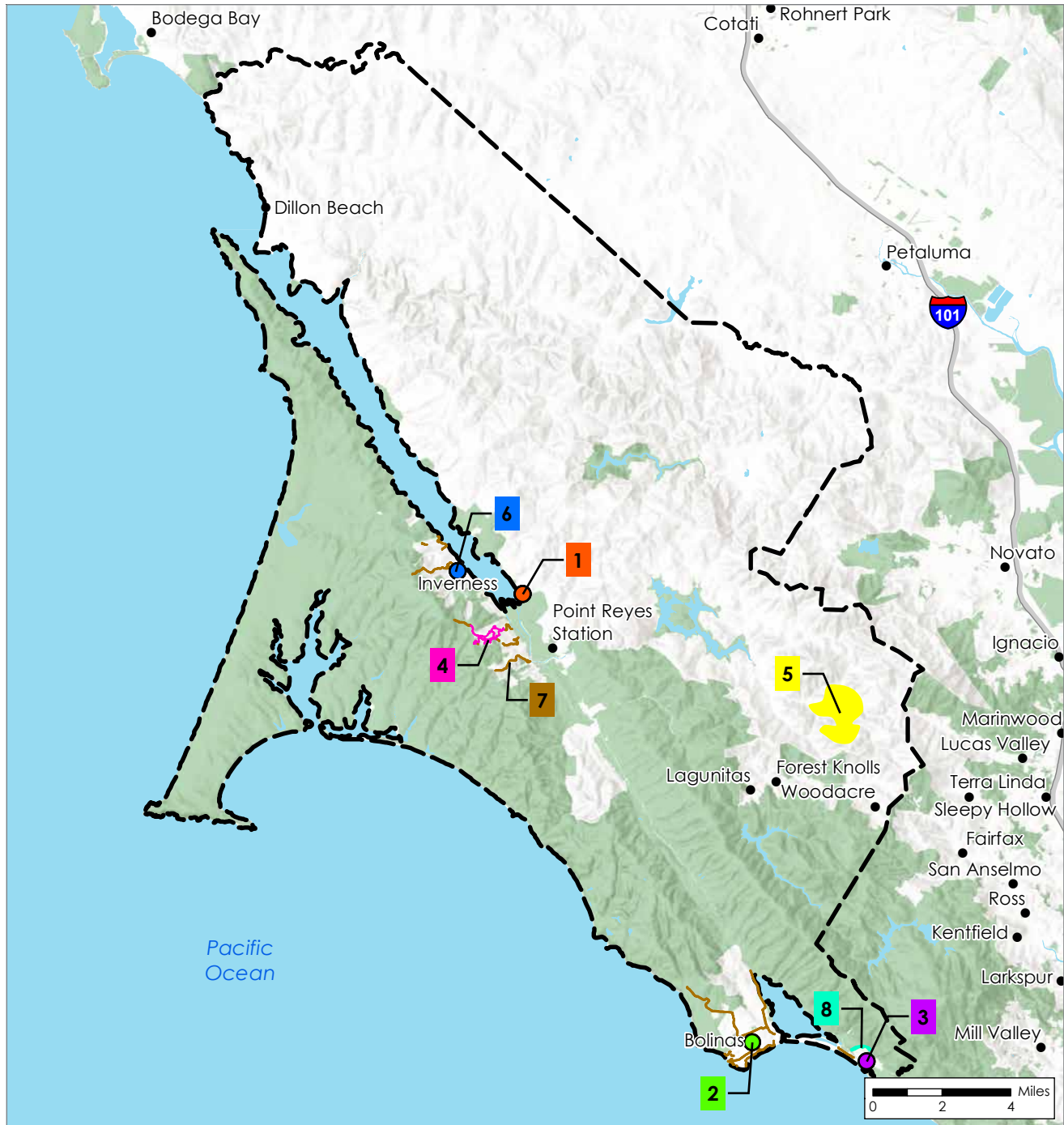


Creating defensible space and removing fire hazardous species: Before and After



# MWPA WORK PLAN PROPOSALS WEST MARIN ZONE

For detailed proposal information, go to portal:  
[webportal.marinwildfire.org](http://webportal.marinwildfire.org)



### Legend

Scale = 1:300,000  
Created: 5/18/2022



### Proposal Locations

- Marin County Fire\*
- Bolinas\*
- Stinson Beach Fire\*
- Inverness Volunteer Fire Department\*

- ▬ Inverness Ridge Association Evacuation Route Vegetation Management
- ▬ Rancho Santa Margarita Vegetation Management
- ▬ Stinson Beach Fuel Break 22/23
- ▬ West Marin Zone Evacuation Route Core Project
- West Marin Zone

\*Location includes multiple projects.

## West Marin Zone Work Plan Proposals

Map Key	Draft Proposal Name	Lead Agency	D-Space Budget	Local Budget	Core Budget
<b>Key 1</b>	West Marin Defensible Space and Home Hardening Evaluation and Inspection Program	Marin Co Fire	x		
<b>Key 1</b>	West Marin Firewise Community Hazardous Plant Removal Support	Marin Co Fire		x	
<b>Key 1</b>	West Marin Vegetation Management Equipment	Marin Co Fire			x
<b>Key 2</b>	Bolinas Defensible Space Inspections	Bolinas	x		
<b>Key 2</b>	Bolinas UTV for Prevention	Bolinas		x	
<b>Key 3</b>	Stinson Beach Defensible Space Inspections	Stinson Beach Fire	x		
<b>Key 3</b>	West Marin Zone Hi-Lo Sirens	Stinson Beach Fire			x
<b>Key 4</b>	Inverness Ridge Association Evacuation Route Vegetation Management	Marin Co Fire		x	
<b>Key 5</b>	Rancho Santa Margarita Vegetation Management	Marin Co Fire		x	
<b>Key 6</b>	Inverness Evacuation Route Vegetation Management	Inverness Volunteer Fire Department		x	
<b>Key 6</b>	Inverness Vegetation Management Equipment	Inverness Volunteer Fire Department		x	
<b>Key 6</b>	Inverness Defensible Space Inspections	Inverness Volunteer Fire Department	x		
<b>Key 7</b>	West Marin Zone Evacuation Route Core Project	Marin Co Fire			x
<b>Key 8</b>	Stinson Beach Fuel Break 22/23	Stinson Beach Fire		x	

## West Marin Zone Proposal Budget Summary

### Bolinas Fire District Local and D-Space Proposals

Proposal Title	Lead Member Agency	Program Area	Local	D-Space	Core
Bolinas UTV For Prevention	Bolinas Fire Department	Local	\$24,889		
Bolinas Defensible Space Inspections	Bolinas Fire Department	Defensible Space		\$24,889	
<b>Total</b>			<b>\$24,889</b>	<b>\$24,889</b>	
<b>Approx Budget</b>			<b>\$24,889</b>	<b>\$24,889</b>	
<b>Remaining</b>			<b>\$0</b>	<b>\$0</b>	

### Inverness Local and D-Space Proposals

Proposal Title	Lead Member Agency	Program Area	Local	D-Space	Core
Inverness Evacuation Route Vegetation Management	Inverness Volunteer Fire Department	Local	\$10,000		
Inverness Vegetation Management Equipment	Inverness Volunteer Fire Department	Local	\$11,172		
Inverness Defensible Space Inspections	Inverness Volunteer Fire Department	Defensible Space		\$21,172	
<b>Total</b>			<b>\$21,172</b>	<b>\$21,172</b>	
<b>Approx Budget</b>			<b>\$21,172</b>	<b>\$21,172</b>	
<b>Remaining</b>			<b>\$0</b>	<b>\$0</b>	

### Marin County Fire Local and D-Space Proposals

Proposal Title	Lead Member Agency	Program Area	Local	D-Space	Core
West Marin Firewise Community Hazardous Plant Removal Support	County Of Marin	Local	\$150,000		
Rancho Santa Margarita Vegetation Management	County Of Marin	Local	\$50,000		
Inverness Ridge Association Evacuation Route Vegetation Management	County Of Marin	Local	\$64,914		
West Marin Defensible Space and Home Hardening Evaluation and Inspection Program	County Of Marin	Local	\$75,000		
Defensible Space and Home Hardening Evaluation and Inspection Program	County Of Marin	Defensible Space		\$339,914	
<b>Total</b>			<b>\$339,914</b>	<b>\$339,914</b>	
<b>Approx Budget</b>			<b>\$339,914</b>	<b>\$339,914</b>	
<b>Remaining</b>			<b>\$0</b>	<b>\$0</b>	



### Stinson Beach Fire District Local and D-Space Proposals

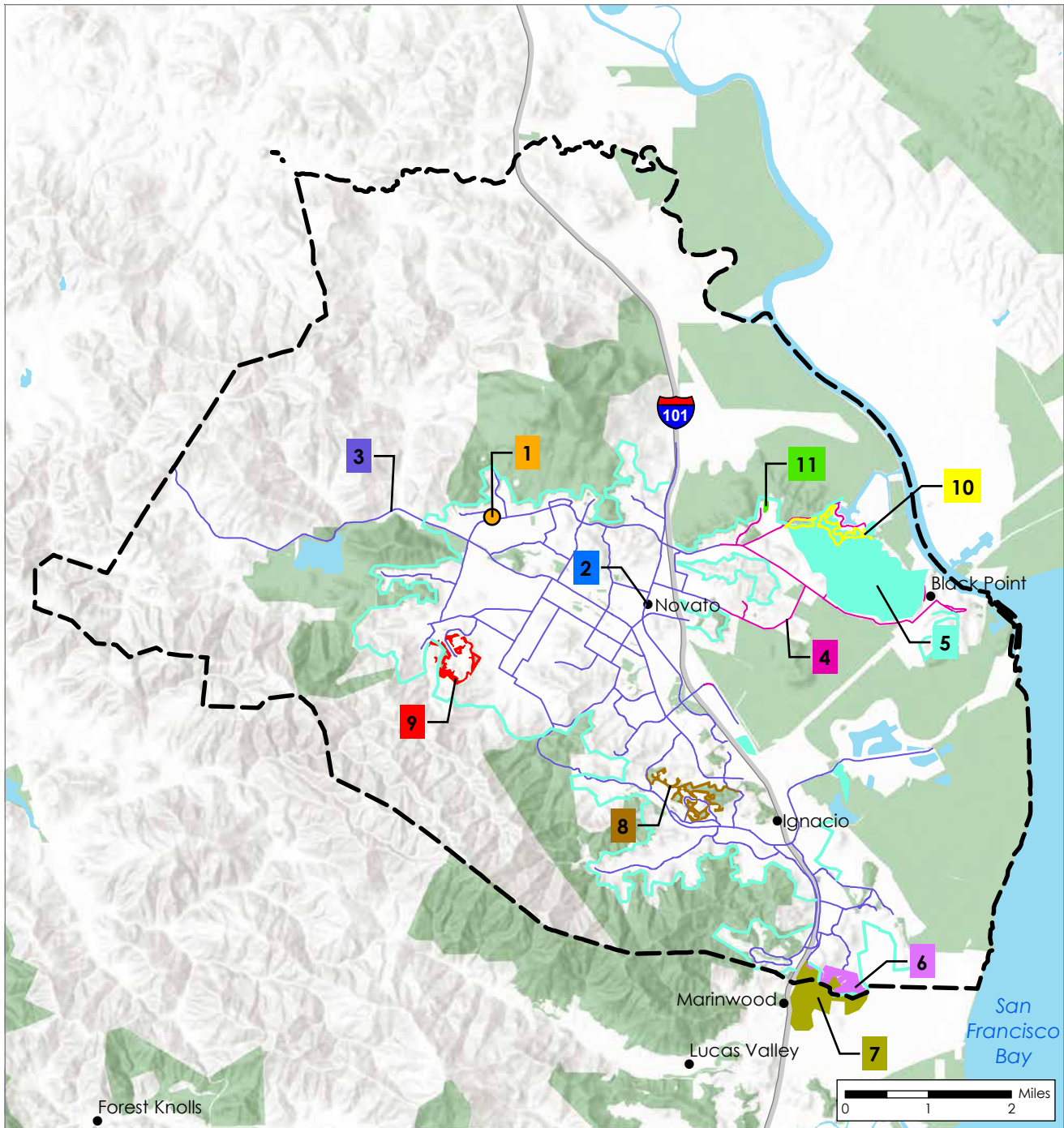
Proposal Title	Lead Member Agency	Program Area	Local	D-Space	Core
Stinson Beach Fuel Break 22/23	Stinson Beach Fire Department	Local	\$27,845		
Stinson Beach Defensible Space Inspections	Stinson Beach Fire Department	Defensible Space		\$27,845	
<b>Total</b>			<b>\$27,845</b>	<b>\$27,845</b>	
<b>Approx Budget</b>			<b>\$27,845</b>	<b>\$27,845</b>	
<b>Remaining</b>			<b>\$0</b>	<b>\$0</b>	

### All West Marin Zone Core Proposals

Proposal Title	Lead Member Agency	Program Area	Local	D-Space	Core
West Marin Zone Hi-Lo Sirens	Stinson Beach Fire Department	Core			\$40,000
West Marin Zone Evacuation Route Core Project	County Of Marin	Core			\$244,336
West Marin Vegetation Management Equipment	County Of Marin	Core			\$110,000
<b>Total</b>					<b>\$394,336</b>
<b>Approx Budget</b>					<b>\$394,336</b>
<b>Remaining</b>					<b>\$0</b>

# MWPA WORK PLAN PROPOSALS NOVATO ZONE

For detailed proposal information, go to portal:  
[webportal.marinwildfire.org](http://webportal.marinwildfire.org)



### Legend

Scale = 1:125,000  
Created: 5/18/2022



### Proposal Locations

- Novato\*
- Novato Fire Smart Demonstration Garden - Station 63
- Marin Valley Goat Grazing Maintenance
- Novato Evacuation Route
- Bahia Fuel Break Maintenance

- Black Point Evacuation Routes
- Greater Novato Fuel Break Plan + Implementation\*
- Marin Highlands Fuel Break Maintenance
- Marin Valley/St. Vincent Prescribed Burn Project
- Ignacio Valley Fuel Break Maintenance
- Valley Memorial Park Eucalyptus Removal
- Novato Zone

\*Location contains multiple projects.

## Novato Zone Work Plan Proposals

Map Key	Draft Proposal Name	Lead Agency	D-Space Budget	Local Budget	Core Budget
Key 1	Novato Fire Smart Demonstration Garden – Station 63	Novato Fire			x
Key 2	Novato Fire Adaptive Multimedia Campaign	Novato Fire			x
Key 2	Novato Home Hardening Grant Program	Novato Fire		x	
Key 2	Novato Long Range Acoustic Device Warning System Plan	Novato Fire			x
Key 2	Novato Fire Road Maintenance	Novato Fire			x
Key 2	Novato Voluntary Hazard Abatement/Invasive Vegetation Program	Novato Fire		x	
Key 2	Novato Vegetation Management Grant Program	Novato Fire	x		
Key 2	Novato Wildfire Mitigation Specialists	Novato Fire	x		
Key 2	Novato Senior Vegetation Management Specialist	Novato Fire			x
Key 2	Novato Vegetation Management Program Manager	Novato Fire			x
Key 3	Novato Evacuation Route	Novato Fire			x
Key 4	Marin Valley Goat Grazing Maintenance	Novato Fire			x
Key 5	Greater Novato Fuel Break Plan	Novato Fire			x
Key 5	Greater Novato Fuel Break Implementation	Novato Fire			x
Key 6	Black Point Evacuation Routes	Novato Fire			x
Key 7	Marin Valley/St. Vincent Prescribed Burn Project	Novato Fire			x
Key 8	Ignacio Valley Fuel Break Maintenance	Novato Fire			x
Key 9	Marin Highlands Fuel Break Maintenance	Novato Fire			x
Key 10	Bahia Fuel Break Maintenance	Novato Fire			x
Key 11	Valley Memorial Park Eucalyptus Removal	Novato Fire			x

# Novato Zone Work Plan Proposals

All Novato Fire District Proposals					
Proposal Title	Lead Member Agency	Program Area	Local	D-Space	Core
Novato Vegetation Management Grant Program	Novato Fire District	Local	\$210,000		
Novato Home Hardening Grant Program	Novato Fire District	Local	\$746,437		
Novato Voluntary Hazard Abatement/Invasive Vegetation Program	Novato Fire District	Local	\$50,000		
Novato Wildfire Mitigation Specialists	Novato Fire District	Defensible Space		\$1,006,437	
Greater Novato Fuel Break Plan	Novato Fire District	Core			\$258,000
Greater Novato Fuel Break Implementation	Novato Fire District	Core			\$170,000
Novato Fire Smart Demonstration Garden Station 63	Novato Fire District	Core			\$100,000
Marin Valley Goat Grazing Maintenance	Novato Fire District	Core			\$40,000
Novato Fire Road Maintenance	Novato Fire District	Core			\$130,000
Valley Memorial Park Eucalyptus Removal	Novato Fire District	Core			\$100,000
Novato Long Range Acoustic Device Warning System Plan	Novato Fire District	Core			\$50,000
Bahia Fuel Break Maintenance	Novato Fire District	Core			\$30,000
Black Point Evacuation Routes	Novato Fire District	Core			\$90,000
Ignacio Valley Fuel Break Maintenance	Novato Fire District	Core			\$50,000
Marin Highlands Fuel Break Maintenance	Novato Fire District	Core			\$30,000
Novato Evacuation Route	Novato Fire District	Core			\$100,000
Marin Valley/St. Vincent Prescribed Burn Project	Novato Fire District	Core			\$24,062
Novato Fire Adaptive Multimedia Campaign	Novato Fire District	Core			\$100,000
Novato Vegetation Management Program Manager	Novato Fire District	Core			\$175,000
Novato Senior Vegetation Management Specialist	Novato Fire District	Core			\$150,000
	<b>Total</b>		<b>\$1,006,437</b>	<b>\$1,006,437</b>	<b>\$1,597,062</b>
	<b>Approx Budget</b>		<b>\$1,006,437</b>	<b>\$1,006,437</b>	<b>\$1,597,062</b>
	<b>Remaining</b>		<b>\$0</b>	<b>\$0</b>	<b>\$0</b>

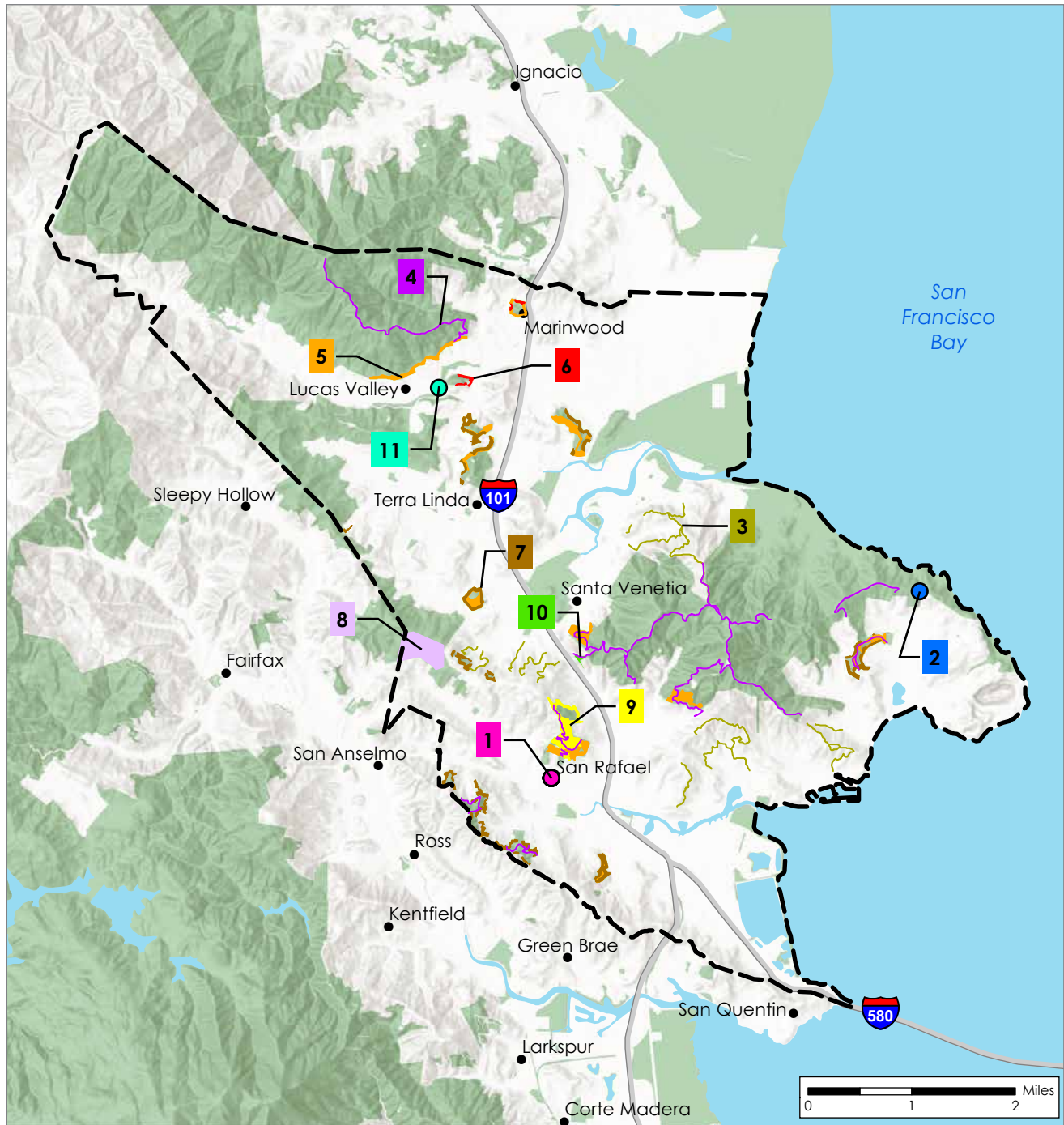




The wildland-urban interface from Loma Verde Open Space Preserve in southern Novato.

# MWPA WORK PLAN PROPOSALS SAN RAFAEL ZONE

For detailed proposal information, go to portal:  
[webportal.marinwildfire.org](http://webportal.marinwildfire.org)



### Legend

Scale = 1:100,000  
Created: 5/18/2022



### Proposal Locations

- San Rafael\*
- China Camp LRAD
- Emergency Notification System
- Marinwood Defensible Space Program
- San Rafael Evacuation Route Vegetation Management
- Fire Road Vegetation Clearance, Phase 2
- San Rafael Zone

- Cal Fire Forest Health Grant
- Marinwood Fuel Reduction
- Prescribed Herbivory
- Ridgewood Shaded Fuel Break
- Planning San Rafael Zone Share
- San Rafael Zone Open Space Defensible Space Fuel Reduction, Phase 2
- West San Pedro Fuel Reduction

\*Location includes multiple projects.



## San Rafael Zone Work Plan Proposals

Map Key	Draft Proposal Name	Lead Agency	D-Space Budget	Local Budget	Core Budget
Key 1	San Rafael Debris Disposal	City of San Rafael			x
Key 1	Defensible Space Program	City of San Rafael	x		
Key 1	San Rafael Direct Residence Assistance	City of San Rafael			x
Key 1	San Rafael Educational Landscaping	City of San Rafael			x
Key 1	San Rafael Landscape Restoration	City of San Rafael		x	
Key 1	San Rafael Public Education, Outreach and Engagement	City of San Rafael			x
Key 1	San Rafael Small And Responsive Projects	City of San Rafael		x	
Key 1	SRFD Management Staff	City of San Rafael		x	
Key 1	SRFD Mitigation and Preparedness Staff	City of San Rafael		x	
Key 1	San Rafael Police Rangers for Ignition Reduction	City of San Rafael		x	
Key 1	SRFD Vegetation and Project Management Staff	City of San Rafael			x
Key 2	China Camp LRAD Emergency Notification System	City of San Rafael			x
Key 3	San Rafael Evacuation Route Vegetation Management	City of San Rafael			x
Key 4	Fire Road Vegetation Clearance, Phase 2	City of San Rafael			x
Key 5	Marinwood and San Rafael Open Space Prescribed Herbivory	City of San Rafael			x
Key 6	Marinwood Fuel Reduction	Marinwood CSD		x	
Key 7	San Rafael Zone Open Space Defensible Space Fuel Reduction, Phase 2	City of San Rafael			x
Key 8	Ridgewood Shaded Fuel Break Planning San Rafael Zone Share	City of San Rafael			x
Key 9	San Rafael Cal Fire Forest Health Grant	City of San Rafael		x	
Key 10	West San Pedro Fuel Reduction	City of San Rafael			x
Key 11	Marinwood Defensible Space Program	City of San Rafael	x		

## San Rafael Zone Budget Summary

### San Rafael Fire District Local and D-Space Proposals

Proposal Title	Lead Member Agency	Program Area	Local	D-Space	Core
San Rafael Landscape Restoration	City Of San Rafael	Local	\$200,000		
San Rafael Police Rangers for Ignition Reduction	City Of San Rafael	Local	\$350,000		
SRFD Mitigation and Preparedness Staff	City Of San Rafael	Local	\$60,000		
SRFD Management Staff	City Of San Rafael	Local	\$96,000		
San Rafael Small and Responsive Projects	City Of San Rafael	Local	\$163,010		
San Rafael Cal Fire Forest Health Grant	City Of San Rafael	Local	\$100,000		
Defensible Space Program	City Of San Rafael	Defensible Space		\$969,010	
<b>Total</b>			<b>\$969,010</b>	<b>\$969,010</b>	
<b>Approx Budget</b>			<b>\$969,010</b>	<b>\$969,010</b>	
<b>Remaining</b>			<b>\$0</b>	<b>\$0</b>	

### Marinwood Local and D-Space Proposals

Proposal Title	Lead Member Agency	Program Area	Local	D-Space	Core
Marinwood Fuel Reduction	Marinwood Csd	Local	\$68,347		
Marinwood Defensible Space Inspection Program	Marinwood Csd	Defensible Space		\$68,347	
<b>Total</b>			<b>\$68,347</b>	<b>\$68,347</b>	
<b>Approx Budget</b>			<b>\$68,347</b>	<b>\$68,347</b>	
<b>Remaining</b>			<b>\$0</b>	<b>\$0</b>	

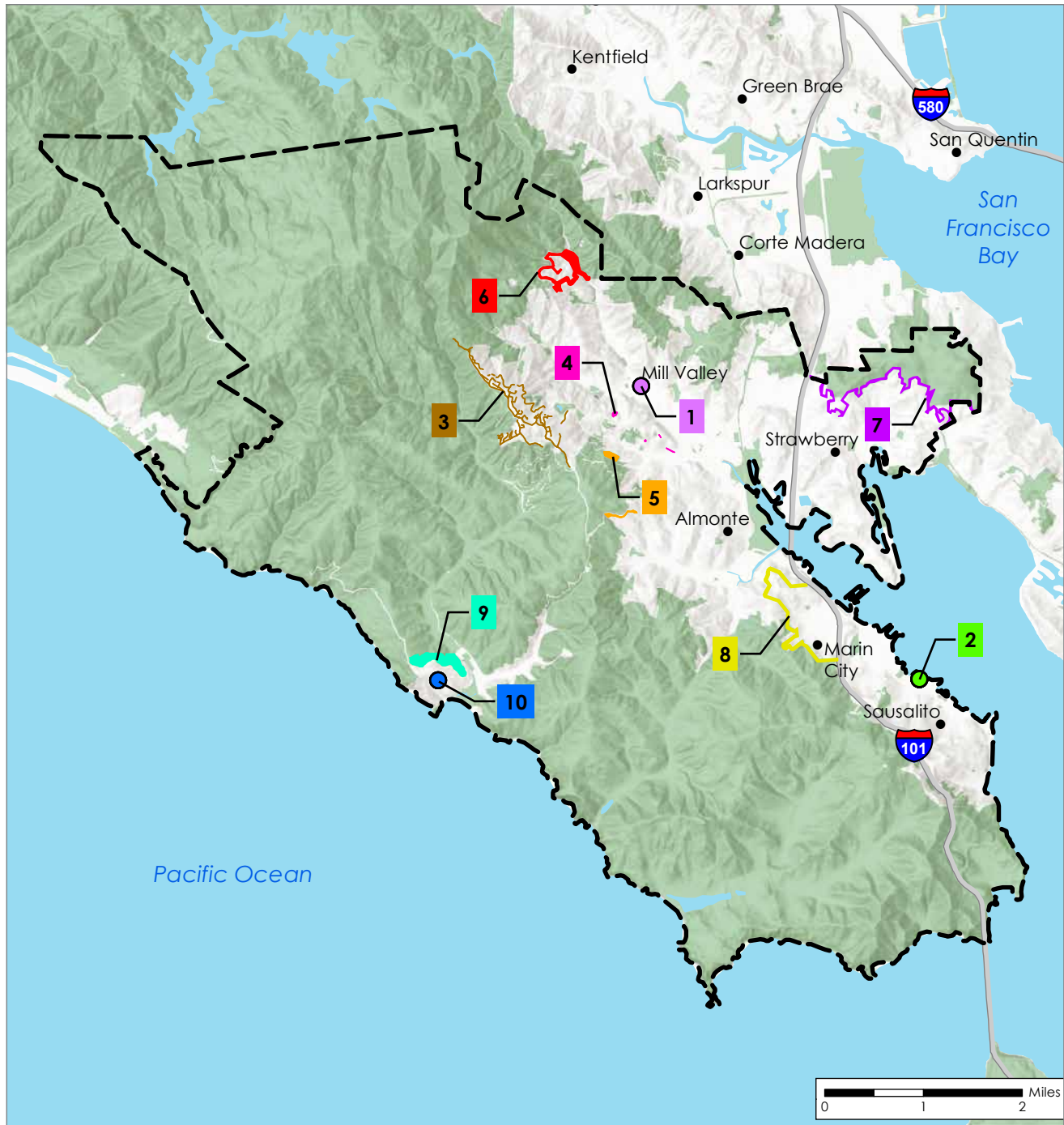


## San Rafael Zone Core Proposals

Proposal Title	Lead Member Agency	Program Area	Local	D-Space	Core
San Rafael Educational Landscaping	City Of San Rafael	Core			\$85,000
San Rafael Debris Disposal	City Of San Rafael	Core			\$40,000
San Rafael Evacuation Route Vegetation Management	City Of San Rafael	Core			\$75,000
West San Pedro Fuel Reduction	City Of San Rafael	Core			\$75,000
Ridgewood Shaded Fuel Break Planning – San Rafael Zone Share	City Of San Rafael	Core			\$100,000
San Rafael Zone Open Space Defensible Space Fuel Reduction Phase 2	City Of San Rafael	Core			\$200,000
SRFD Vegetation and Project Management Staff	City Of San Rafael	Core			\$350,000
San Rafael Direct Residence Assistance	City Of San Rafael	Core			\$336,242
San Rafael Public Education, Outreach and Engagement	City Of San Rafael	Core			\$125,000
Marinwood And San Rafael Open Space Prescribed Herbivory	City Of San Rafael	Core			\$200,000
China Camp LRAD Emergency Notification System	City Of San Rafael	Core			\$150,000
Fire Road Vegetation Clearance Phase 2	City Of San Rafael	Core			\$150,000
	<b>Total</b>				<b>\$1,886,242</b>
	<b>Approx Budget</b>				<b>\$1,886,242</b>
	<b>Remaining</b>				<b>\$0</b>

# MWPA WORK PLAN PROPOSALS SOUTHERN MARIN ZONE

For detailed proposal information, go to portal:  
[webportal.marinwildfire.org](http://webportal.marinwildfire.org)



### Legend

Scale = 1:105,000  
Created: 5/18/2022



### Proposal Locations

- Mill Valley\*
- Southern Marin Fire District\*
- Muir Beach\*
- Throckmorton Ridge Evacuation
- Route Vegetation Management
- Southern Marin Hazardous Tree Removal\*

- Mill Valley Hazardous Tree and Flammable Vegetation Removal\*
- Marin City Fuel Reduction Zone
- Muir Beach Hwy 1 Evacuation Corridor/Banducci Ranch
- Ring Mountain Fuel Break
- Mill Valley Summit and Ralston Fuel Break
- Southern Marin Zone

\*Location includes multiple projects.

## Southern Marin Zone Work Plan Proposals

Map Key	Draft Proposal Name	Lead Agency	D-Space Budget	Local Budget	Core Budget
Key 1	Mill Valley Evacuation Maps	Mill Valley		x	
Key 1	D-Space Inspector, Full-Time – Mill Valley	Mill Valley	x		
Key 1	D-Space Inspector, Part-Time – Mill Valley	Mill Valley	x		
Key 2	Southern Marin Wildfire Evacuation Maps	SMFPD		x	
Key 2	SMFD D-space Inspector, Full-Time	SMFPD	x		
Key 2	SMFD D-space Inspector, Part-Time	SMFPD	x		
Key 2	Regional Neighborhood Response Coordinator	SMFPD	x		
Key 2	SMFD Vegetation Management Project Coordinator	SMFPD		x	
Key 2	SMFD Vegetation Management Specialist	SMFPD			x
Key 2	Southern Marin Emergency Notification Network	SMFPD			x
Key 3	Throckmorton Ridge Evacuation Route Vegetation Management	Marin Co Fire			x
Key 4	Mill Valley Hazardous Tree and Flammable Vegetation Removal	Mill Valley		x	
Key 4	Mill Valley Hazardous Tree and Flammable Vegetation Removal – Supplemental Funding	Mill Valley	x		
Key 5	Southern Marin Hazardous Tree Removal	SMFPD		x	
Key 5	Southern Marin Hazardous Tree Removal – Supplemental Funding	SMFPD	x		
Key 6	Mill Valley Summit and Ralston Fuel Break	Mill Valley			x
Key 7	Ring Mountain Fuel Break	SMFPD			x
Key 8	Marin City Fuel Reduction Zone	SMFPD			x
Key 9	Muir Beach Highway 1 Evacuation Corridor/ Banducci Ranch	Muir Beach			x
Key 10	Muir Beach Equipment Fund	Muir Beach		x	
Key 10	Muir Beach Tree Thinning	Muir Beach		x	
Key 10	Muir Beach Defensible Space Tree Limbing and Thinning	Muir Beach	x		
Key 10	Muir Beach Defensible Space Inspections	Muir Beach	x		

# Southern Marin Zone Budget Summary

## Mill Valley Local and D-Space Proposals

Proposal Title	Lead Member Agency	Program Area	Local	D-Space	Core
Mill Valley Hazardous Tree and Flammable Vegetation Removal	City Of Mill Valley	Local	\$241,319		
Mill Valley Hazardous Tree and Flammable Vegetation Removal - Supplemental Funding	City Of Mill Valley	Defensible Space		\$ 9,773	
Mill Valley Evacuation Maps	City Of Mill Valley	Local	\$6,000		
Mill Valley D-Space Inspector, Part-Time	City Of Mill Valley	Defensible Space		\$90,546	
Mill Valley D-Space Inspector, Full-Time	City Of Mill Valley	Defensible Space		\$147,000	
<b>Total</b>			<b>\$247,319</b>	<b>\$247,319</b>	
<b>Approx Budget</b>			<b>\$247,319</b>	<b>\$247,319</b>	
<b>Remaining</b>			<b>\$0</b>	<b>\$0</b>	

## Muir Beach Community Services District Local and D-Space Proposals

Proposal Title	Lead Member Agency	Program Area	Local	D-Space	Core
Muir Beach Equipment	Muir Beach Community Services District	Local	\$5,000		
Muir Beach Tree Thinning	Muir Beach Community Services District	Local	\$1,320		
Muir Beach Defensible Space Tree Limbing and Thinning	Muir Beach Community Services District	Defensible Space		\$2,320	
Muir Beach Defensible Space Inspections	Muir Beach Community Services District	Defensible Space		\$4,000	
<b>Total</b>			<b>\$6,320</b>	<b>\$6,320</b>	
<b>Approx Budget</b>			<b>\$6,320</b>	<b>\$6,320</b>	
<b>Remaining</b>			<b>\$0</b>	<b>\$0</b>	



### Southern Marin Fire District Local and D-Space Proposals

Proposal Title	Lead Member Agency	Program Area	Local	D-Space	Core
Southern Marin Hazardous Tree Removal	Southern Marin Fire Protection District	Local	\$450,239		
Southern Marin Hazardous Tree Removal - Supplemental Funding	Southern Marin Fire Protection District	Defensible Space		\$64,238.58	
Southern Marin Wildfire Evacuation Maps	Southern Marin Fire Protection District	Local	\$18,000		
SMFD D-Space Inspector, Full Time	Southern Marin Fire Protection District	Defensible Space		\$145,000	
SMFD D-Space Inspector, Part-Time	Southern Marin Fire Protection District	Defensible Space		\$91,000	
SMFD Vegetation Management Project Coordinator	Southern Marin Fire Protection District	Defensible Space		\$168,000	
	<b>Total</b>		<b>\$468,239</b>	<b>\$468,239</b>	
	<b>Approx Budget</b>		<b>\$468,239</b>	<b>\$468,239</b>	
	<b>Remaining</b>		<b>\$0</b>	<b>\$0</b>	

### All Southern Marin Zone Core Proposals

Proposal Title	Lead Member Agency	Program Area	Local	D-Space	Core
SMFD Vegetation Management Specialist	Southern Marin Fire Protection District	Core			\$167,529
Regional Neighborhood Response Coordinator	Southern Marin Fire Protection District	Core			\$79,873
Mill Valley Summit and Ralston Fuel Break	City Of Mill Valley	Core			\$229,023
Muir Beach Hwy 1 Evacuation Corridor / Banducci Ranch	Muir Beach Community Services District	Core			\$98,153
Ring Mountain Fuel Break - SMFD	Southern Marin Fire Protection District	Core			\$143,957
Marin City Fuel Reduction Zone	County Of Marin	Core			\$65,435
Throckmorton Ridge Evacuation Route Vegetation Management	County Of Marin	Core			\$65,435
Southern Marin Emergency Notification Network	Southern Marin Fire Protection District	Core			\$359,893
	<b>Total</b>				<b>\$1,209,298</b>
	<b>Approx Budget</b>				<b>\$1,209,298</b>
	<b>Remaining</b>				<b>\$0</b>

# MWPA WORK PLAN PROPOSALS

## JPA-WIDE

For detailed proposal information, go to portal:  
[webportal.marinwildfire.org](http://webportal.marinwildfire.org)

<b>JPA-wide Budget Summary</b>		
<b>JPA-wide Proposals</b>	<b>FY22-23 Costs</b>	<b>Itemized Costs</b>
MWPA Operational Costs	\$400,000	-
Environmental Compliance for Core Projects	\$750,000	-
Knowledge and Attitudes Survey	\$75,000	-
Risk Reduction Tracking Through Parcel-Level Risk Modeling	\$60,000	-
Evacuation Ingress/Egress Risk Assessment	\$350,000	-
Zonehaven Subscription	\$75,000	-
FireAside Defensible Space Inspection Application Subscription	\$155,000	-
Fire Camera Coordination	\$30,000	-
Home Hardening and Defensible Space Grant Programs (and staff to support)	\$250,000	-
Chipper Day Program (and staff to support)	\$1,250,000	-
Regional Wildfire-Disaster Preparedness Coordinator	\$43,000	-
UCCE / Marin Master Gardeners position (year 2)	\$75,000	-
Public Education Overall	\$988,068	individual proposals listed below
Firewise USA Support	-	\$91,960
Written Educational Materials	-	\$73,568
Ember Stomp	-	\$0
Outreach To Marin Schools	-	\$30,653
Adapt Campaign	-	\$325,000
Social Media Outreach	-	\$110,352
Spring Workshops	-	\$18,392
D-Space Program Support	-	\$12,261
Video Outreach	-	\$214,574
Bilingual Outreach	-	\$50,000
Website Maintenance & Response to Public Inquiries	-	\$61,307
<b>Total Public Education</b>		<b>\$988,068</b>
<b>Total JPA-wide proposals</b>	<b>\$4,501,068</b>	



The Ember Stomp wildfire prevention festival on May 28, 2021



Marin's wildfire camera network is a collaborative effort



MWPA Staff at the Ember Stomp festival

ZONE	MIL-E021
STATUS	<b>Evacuation Order</b> Immediate threat to life. This is a lawful order to leave now. The area is lawfully closed to public access.
REASON	Wildfire in the area. Evacuate immediately.
SUMMARY	Scott Valley (Lower)
DESCRIPTION	* This zone is located to the South of Marin Ave and Overhill Rd, West of Fairway Drive and Camino Alto, North of E Blithedale Avenue and East of Blithedale Vista Avenue and Del Casa Fire Road.
USEFUL LINKS	<a href="#">AlertMarin</a> English

Zonehaven is a web-based mapping tool that helps communities better plan, communicate, and execute evacuations

# APPENDIX A: JPA OPERATIONAL BOUNDARIES

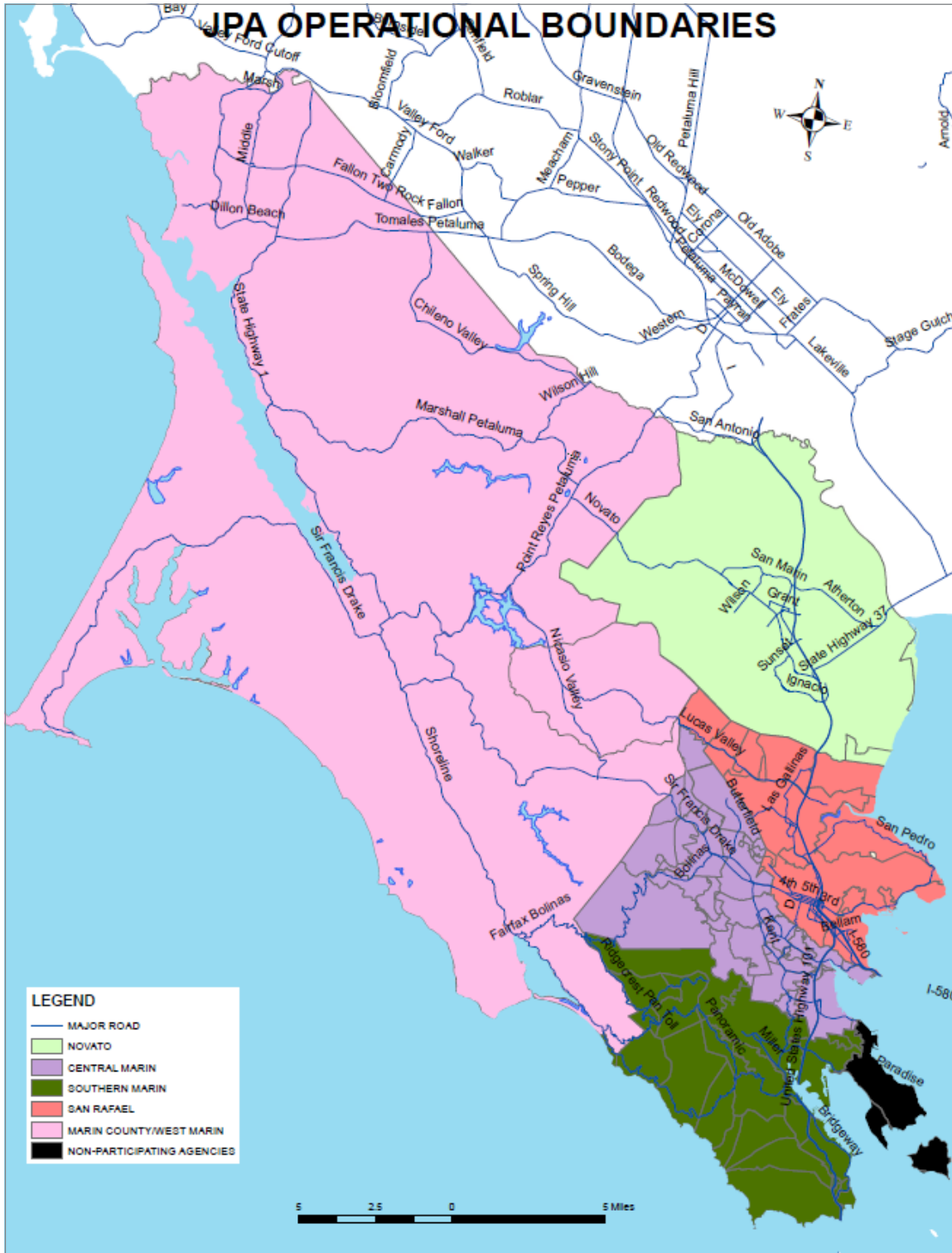


Figure 1. Map of MWPA Zones / Operational Areas.



## APPENDIX B: REFERENCES

- California Air Resources Board.** (2020). Greenhouse Gas Emissions of Contemporary Wildfire, Prescribed Fire, and Forest Management Activities (Public Comment Draft). Sacramento: CARB.  
Retrieved from [https://ww3.arb.ca.gov/cc/inventory/pubs/ca\\_ghg\\_wildfire\\_forestmanagement.pdf](https://ww3.arb.ca.gov/cc/inventory/pubs/ca_ghg_wildfire_forestmanagement.pdf)
- California Forest Climate Action Team.** (2018). California Forest Carbon Plan: Managing Our Forest Landscapes in a Changing Climate. Sacramento: State of California.
- California Natural Resources Agency.** (2018). California's Fourth Climate Change Assessment: San Francisco Bay Area Region Report. Sacramento: State of California.  
Retrieved from [https://www.energy.ca.gov/sites/default/files/2019-11/Reg\\_Report-SUM-CCCA4-2018-005\\_SanFranciscoBayArea\\_ADA.pdf](https://www.energy.ca.gov/sites/default/files/2019-11/Reg_Report-SUM-CCCA4-2018-005_SanFranciscoBayArea_ADA.pdf)
- Marin County Civil Grand Jury.** (2019). Wildfire Preparedness: A New Approach. San Rafael: County of Marin.  
Retrieved from <https://www.marinwildfire.org/about-mwpa/guiding-documents>
- Marin County Fire Department.** (2018). Lessons Learned: 2017 North Bay Fire Seige. County of Marin.  
Retrieved from <https://www.marinwildfire.org/about-mwpa/guiding-documents>
- Marin County Fire Department.** (2020). Marin County Community Wildfire Protection Plan. County of Marin.  
Retrieved from <https://firesafemarin.org/resources/marin-community-wildfire-protection-plan/>
- National Fire Prevention Association.** (2018). Reducing Wildfire Risks: 3 Powerful Tips to Move People to Action. Quincy, Massachusetts: NFPA.  
Retrieved from [http://tkolb.net/FireReports/2019/NFPA\\_Risk\\_Reduction\\_Wildfires\\_White\\_Paper\\_REVISED\\_JAN10.pdf](http://tkolb.net/FireReports/2019/NFPA_Risk_Reduction_Wildfires_White_Paper_REVISED_JAN10.pdf)
- Ramsey, M. L.** (2020). The Camp Fire Public Report: A Summary of the Camp Fire Investigation. Oroville, CA: Butte County District Attorney's Office.  
Retrieved from <https://www.buttecounty.net/Portals/30/CFReport/PGE-THE-CAMP-FIRE-PUBLIC-REPORT.pdf>
- U.S. Census Bureau.** (2020). Bay Area Census: Marin County. San Francisco: MTC-ABAG Library.  
Retrieved from <http://www.bayareacensus.ca.gov/counties/MarinCounty.htm>