



CITY OF SAN RAFAEL ESSENTIAL FACILITIES PHASE 1 ORGANIZATIONAL CHART

The **Facilities Working Group** was created to serve in an advisory role to the Facilities Subcommittee by providing regular feedback and input as the work is carried out on the design and entitlement process of the Phase I projects. This group will be made up of the City Manager, the Assistant City Manager, the two Safety Chiefs, police and fire designees, the Public Works Director, a Fire Commissioner and a Planning Commissioner, and additional community members.

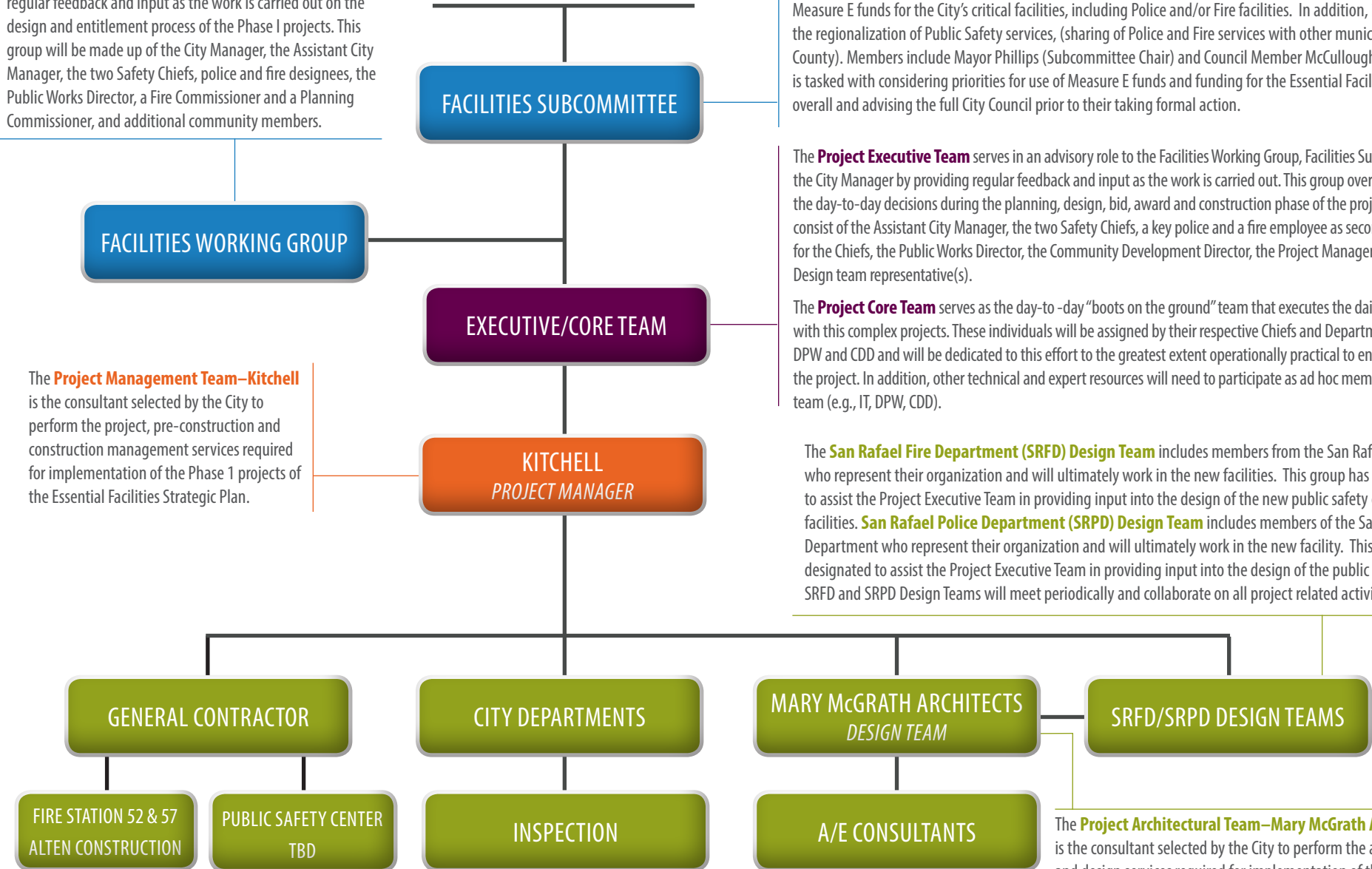
The **Facilities Subcommittee** is an ad hoc subcommittee created to provide preliminary input regarding use of Measure E funds for the City's critical facilities, including Police and/or Fire facilities. In addition, it also considers the regionalization of Public Safety services, (sharing of Police and Fire services with other municipalities and the County). Members include Mayor Phillips (Subcommittee Chair) and Council Member McCullough. The committee is tasked with considering priorities for use of Measure E funds and funding for the Essential Facilities Project overall and advising the full City Council prior to their taking formal action.

The **Project Executive Team** serves in an advisory role to the Facilities Working Group, Facilities Subcommittee, and the City Manager by providing regular feedback and input as the work is carried out. This group oversees and guides the day-to-day decisions during the planning, design, bid, award and construction phase of the project. This group will consist of the Assistant City Manager, the two Safety Chiefs, a key police and a fire employee as second in command for the Chiefs, the Public Works Director, the Community Development Director, the Project Manager and Architectural Design team representative(s).

The **Project Core Team** serves as the day-to-day "boots on the ground" team that executes the daily tasks associated with this complex projects. These individuals will be assigned by their respective Chiefs and Department Directors of DPW and CDD and will be dedicated to this effort to the greatest extent operationally practical to ensure the success of the project. In addition, other technical and expert resources will need to participate as ad hoc members of the project team (e.g., IT, DPW, CDD).

The **Project Management Team—Kitchell** is the consultant selected by the City to perform the project, pre-construction and construction management services required for implementation of the Phase 1 projects of the Essential Facilities Strategic Plan.

The **San Rafael Fire Department (SRFD) Design Team** includes members from the San Rafael Fire Department who represent their organization and will ultimately work in the new facilities. This group has been designated to assist the Project Executive Team in providing input into the design of the new public safety center and fire facilities. **San Rafael Police Department (SRPD) Design Team** includes members of the San Rafael Police Department who represent their organization and will ultimately work in the new facility. This group has been designated to assist the Project Executive Team in providing input into the design of the public safety center. The SRFD and SRPD Design Teams will meet periodically and collaborate on all project related activities as necessary.



The **Project Architectural Team—Mary McGrath Architects** is the consultant selected by the City to perform the architectural and design services required for implementation of the Phase 1 projects of the Essential Facilities Strategic Plan.