

Let's Prepare Together

September, 2019



TOGETHER
SAN RAFAEL

Objectives

- Individual Preparedness
- Staff Disaster Roles
- PG&E PSPS Framework

Disaster Service Worker

- All public employees are disaster service workers per CA Gov Code
- Asked to carry on work as normal or take on other duties related to response and recovery
- Need to be personally prepared so you can fulfil your duty



3 steps to Preparedness

1. Be informed & engaged
2. Have & practice a plan
3. Gather & organize supplies



1. Be informed & engaged



**Nixle: Text zip code to
888-777 (SRPD)**

Alert Marin: alertmarin.org
(SRFD & Marin County)

Be Informed and Engaged



The graphic features the Nixle logo at the top left, which includes a speech bubble icon and the text 'nixle' with the tagline 'Being Smart. Connected. Engaged.' below it. To the right is a circular seal with a checkmark and the text '3 Easy Ways'. Below the logo is a green rounded rectangle containing the text 'Resident Sign Up' and 'any one of these ways'. A numbered list follows: 1. Text Zip Code to 888777, 2. Sign up at www.nixle.com, and 3. Download Nixle Mobile App. On the right side of the graphic, there is an image of a hand holding a smartphone in front of a computer monitor displaying a website.

• Alerts

Sign up for all areas
you live, work, & play



GET EMERGENCY ALERTS
Communities of Marin
REGISTER YOUR CELL OR VOIP



Sign Up for Alert Marin **Regístrese para Alerta Marín**
Do it now! ***¡Hágalo ahora!***



<https://tinyurl.com/y2hovt55>

***AlertMarin is how we will alert you
with potentially life saving information***

Questions or want to be able to login to your AlertMarin account? Email alertmarin@marinsheriff.org or call 415-473-6584



<https://tinyurl.com/y4r8gwbn>

***Alerta Marín lo alertara con información
que podría salvar su vida potencialmente***

¿Preguntas o le gustaría ingresar a su cuenta de Alerta Marín? Envíe un correo a alertmarin@marinsheriff.org o llame al 415-473-6584



Be Informed and Engaged

- Alerts

- **Rumors**

Share only verified info

911 is not an info hotline

Engage your Neighbors

- Who will need help
- Who has resources
- Meeting place

*Neighborhood
Response Teams*



2. Have & practice a plan



- Create
- Share
- Practice

DISASTER PLAN

1.

Sheltering in Place

- Why Shelter in Place
 - Outside more dangerous than inside
 - Hazardous material spill
 - No/Minimal damage
 - No safe egress
 - Order issued
- Disaster Kit
- Stay informed

If you feel unsafe evacuate



Evacuating

- Why/When Evacuate
 - Fire
 - Tsunami threat
 - Structure unsafe
 - Predicted flooding
 - Order issued
- 2 ways out
- Leave early
- ID Meeting Place



A top-down view of a person's hands writing in a spiral-bound notebook on a wooden desk. The person is wearing a blue long-sleeved shirt. A silver pen lies on the desk to the right. In the background, there are glasses, a white coffee cup on a saucer, and a yellow highlighter. A large white circular overlay is on the left side of the image, containing the text.

Create

- Roles & Responsibilities
- Communication Plan
- Meeting locations



Share

- Local & Out of State
- Where items are
- Roles & Responsibilities
- Know School Plans

A group of people are gathered around a CPR training mannequin lying on a mat. One person is performing chest compressions while others observe. The scene is brightly lit, suggesting an indoor training facility.

Practice

- Engage everyone
- Create a ready culture
- Review & update

Practice Earthquake Safety



3. Gather & organize supplies



Go Bag

vs

Disaster Kit

- Short-Term survival & comfort
- Easy to transport
- Multiple bags
 - Work
 - Home
 - Car

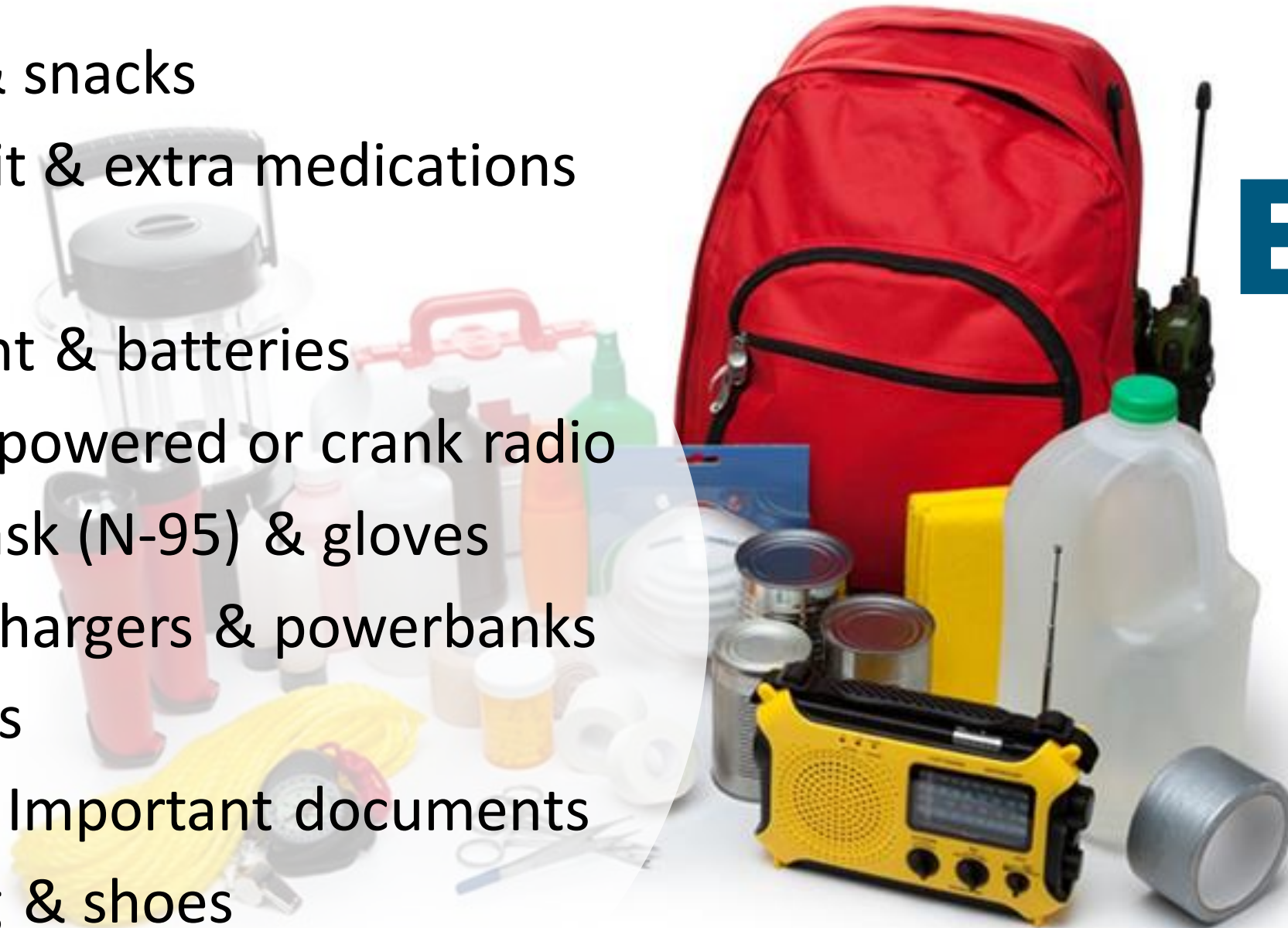


- Long-Term survival
- Bulky
- Stored at home



Go Bags

- Water & snacks
- 1st aid kit & extra medications
- Cash
- Flashlight & batteries
- Battery powered or crank radio
- Dust mask (N-95) & gloves
- Phone chargers & powerbanks
- Toiletries
- Maps & Important documents
- Clothing & shoes



Disaster Kits



- Long term survival
- 3+ days of food and water
 - 1 Gallon/person/day
- Include PET supplies (food, water, medications, leash, ID, etc.)
- Child needs (diapers, toys, formula)
- Change of clothing & shoes
- Can opener & items to prepare food

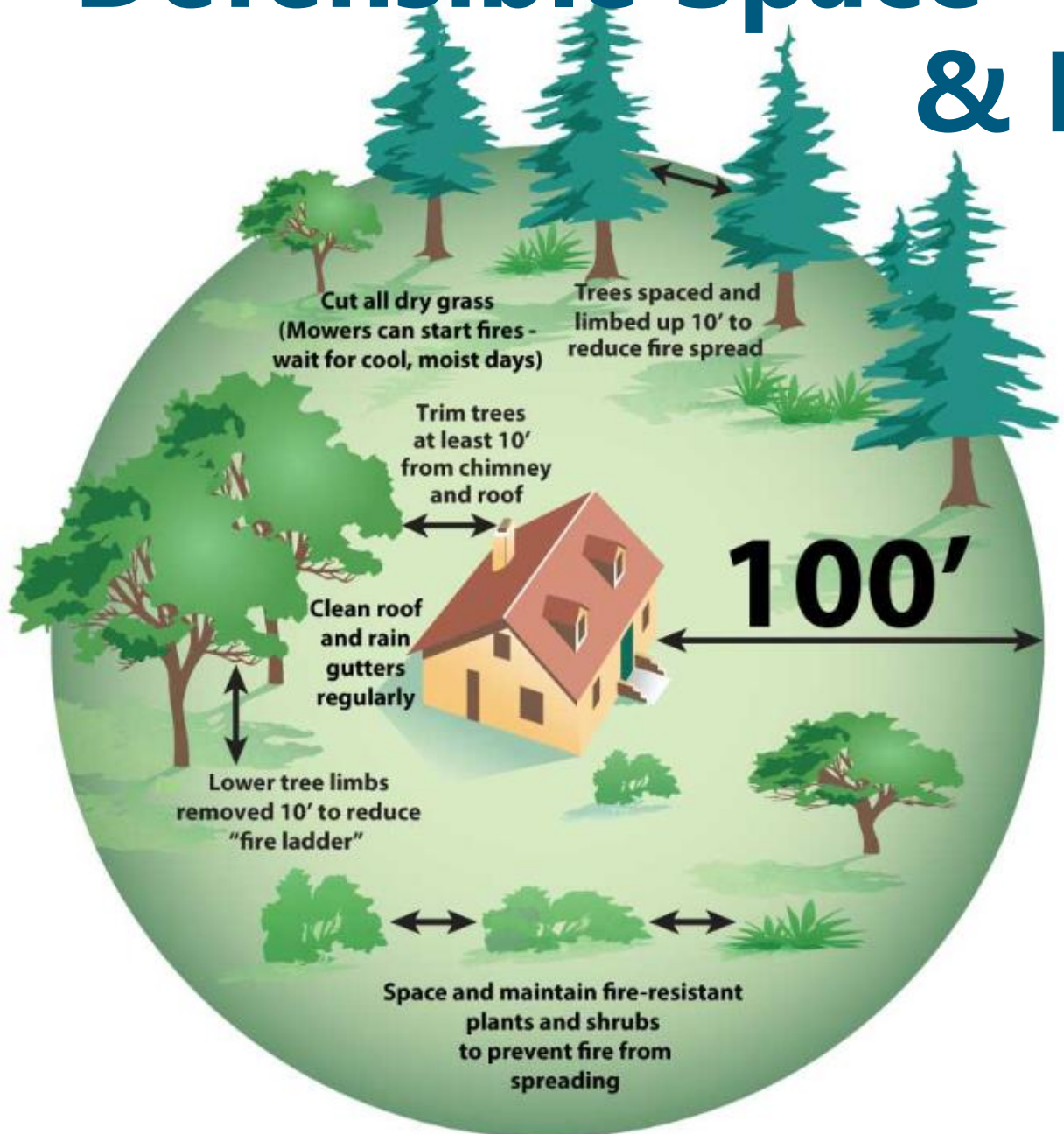
Grab & Go List

- “Need” items
- Establish list of “Want” items
- Organize by priority or location
- Practice loading into car
 - Does it all fit?
 - How long did it take?



Defensible Space

& Hardening Your Home



Harden Your Home

FLYING EMBERS CAN DESTROY HOMES UP TO A MILE FROM A WILDFIRE. HARDEN YOUR HOME BY USING FIRE RESISTANT BUILDING MATERIALS.





QUAKE HOLD!
Earthquake
Museum Putty

MUSEUM ORIGINAL PUTTY

- Holds over 40 items
- Ready to use
- Works on wood and other surfaces
- Removable
- Reusable

The Collector's Choice for securing valuable treasures from earthquakes, kids and other shakers in your home.

Home Safety



3 steps to Preparedness

1. Be informed & engaged
2. Have & practice a plan
3. Gather & organize supplies





Mitigation: Minimize impacts

Preparedness: Plan & practice

Response: Stay, Go, Help

Recovery: Find new community normal

You



- Are a Disaster Service Worker
- Have a personal/family emergency plan
- Have an Emergency Kit and Go Bag
- Are a subject matter expert (SME)
- Are the most important part of an EOC

Standard Emergency Management Goals

- Save Lives, minimize injury
- Stabilize Incident
- Protect Property
- Preserve the environment
- Begin recovery and establish new normal



San Rafael Emergency Management

- Emergency Operations Center (EOC)
- Incident Command System (ICS)
- Collaboration with County and other jurisdictions
- Emergency Operations Plan (EOP)

Lead

OPS

PLN

LOG

FIN



8 EOC Elements

Offers **Support**

via **Communication,**
Coordination,

and **Documentation**

focusing on **Policy**

and **Priorities**

through comprehensive **Information Management**

and **Resource Management**

PG&E Public Safety Power Shutoff

While no single factor will drive a Public Safety Power Shutoff, some factors include:



A RED FLAG WARNING

declared by the National Weather Service



LOW HUMIDITY LEVELS

generally 20% and below



FORECASTED SUSTAINED WINDS GENERALLY ABOVE 25 MPH AND WIND GUSTS IN EXCESS OF APPROXIMATELY 45 MPH,

depending on location and site-specific conditions such as temperature, terrain and local climate



CONDITION OF DRY FUEL

on the ground and live vegetation (moisture content)



ON-THE-GROUND, REAL-TIME OBSERVATIONS

from PG&E's WSOC and field observations from PG&E crews

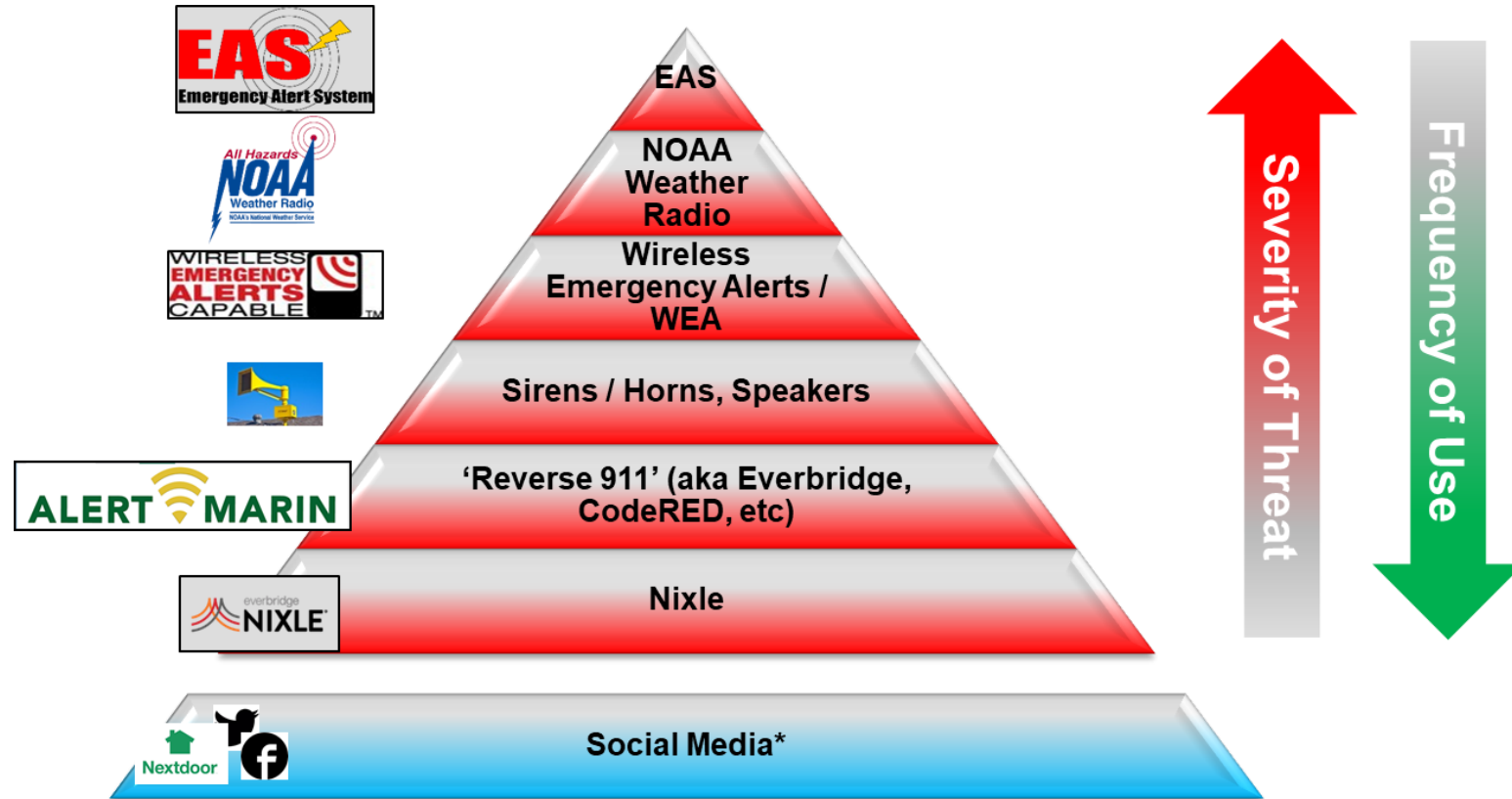
Outage Impacts

- Elevators
- Traffic Signals
- Internet and Technology
- Climate Control
- Alarm systems
- In home medical equipment
- Gas Stations
- ATM and Credit Card readers



Notifications

- New 7 Day Forecast tool
- 48 Hour notice
- 24 Hour notice
- Communication during outage



* Not a mass notification system – but useful to further proliferate alerts & should also be the tool used for non-urgent messages vs Nixle, etc



What to Expect

- Focus on life safety
- Suspend "normal" business operations
- Partial to full EOC activation
- Serve in different capacity
- Public communication and information sharing
- Rumors
- Limited City building operations

Draft PSPS Response Guidelines

Key Points

- Physical Community Communication Sites
- Upstaffing as possible/needed
- Consideration of charging or care centers
- Documentation of staff time, resources, and impacts
- Cancelled events and rentals





Summary

- Be personally prepared
 - Alerts
 - Plan
 - Supplies
- Be ready to serve as a DSW

Resources

- [SROES.org](https://www.sroes.org)
- [ReadyMarin.org](https://www.readymarin.org)
- [Ready.Gov](https://www.ready.gov)
- [pge.com/wildfiresafety](https://www.pge.com/wildfiresafety)
- [Earthquakecountry.org](https://www.earthquakecountry.org)
- [Firesafemarin.org](https://www.firesafemarin.org)



@SRFD

@SanRafaelOES



/sanrafaelfd



@sanrafaelfd



OES@cityofsanrafael.org

SROES.org

QUESTIONS

ANSWERS