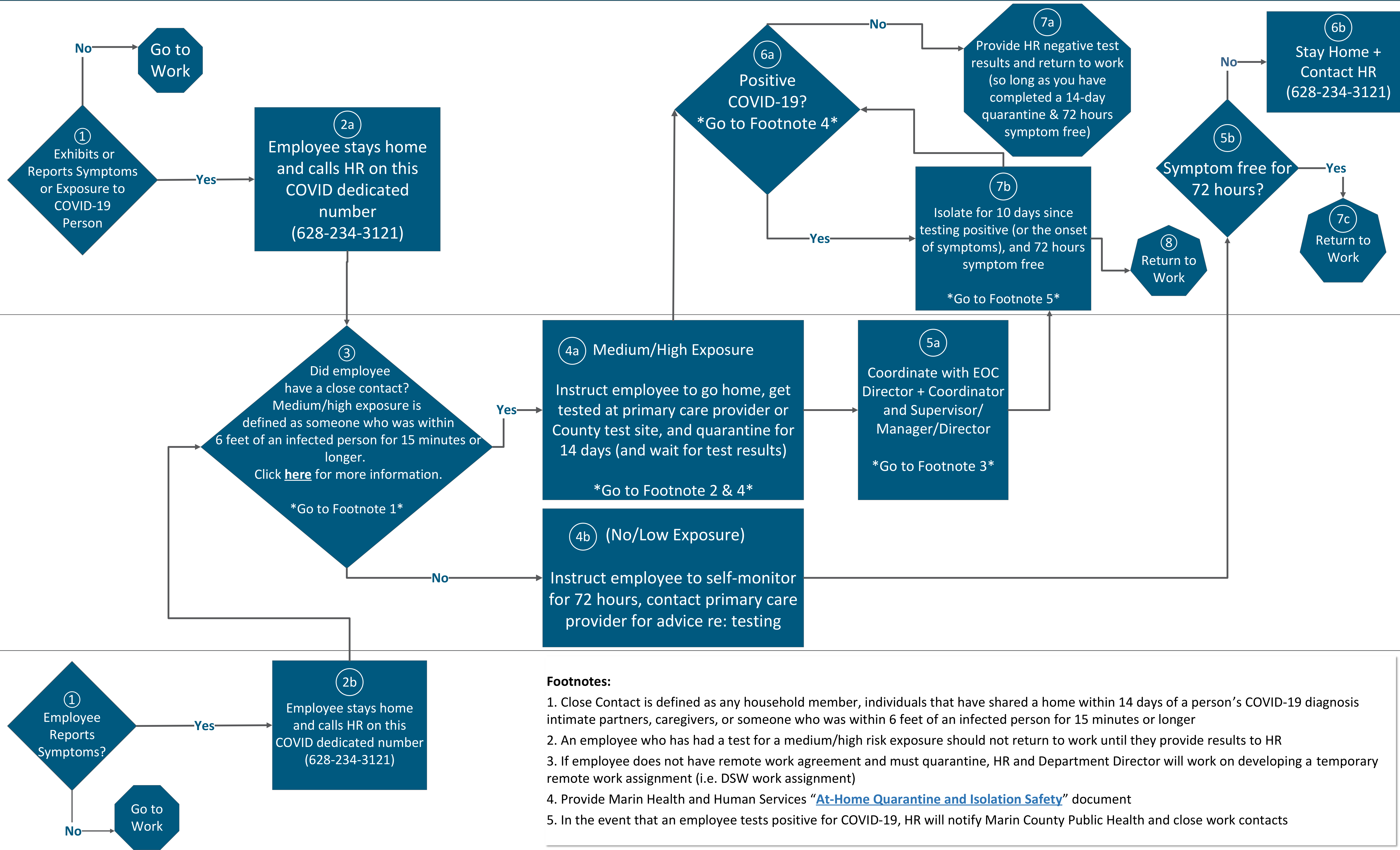


When an Employee Either Has or Reports Symptoms of COVID-19

Employee

HR COVID Lead (Sylvia)

Supervisor/Manager/Director



Footnotes:

1. Close Contact is defined as any household member, individuals that have shared a home within 14 days of a person’s COVID-19 diagnosis intimate partners, caregivers, or someone who was within 6 feet of an infected person for 15 minutes or longer
2. An employee who has had a test for a medium/high risk exposure should not return to work until they provide results to HR
3. If employee does not have remote work agreement and must quarantine, HR and Department Director will work on developing a temporary remote work assignment (i.e. DSW work assignment)
4. Provide Marin Health and Human Services “[At-Home Quarantine and Isolation Safety](#)” document
5. In the event that an employee tests positive for COVID-19, HR will notify Marin County Public Health and close work contacts