

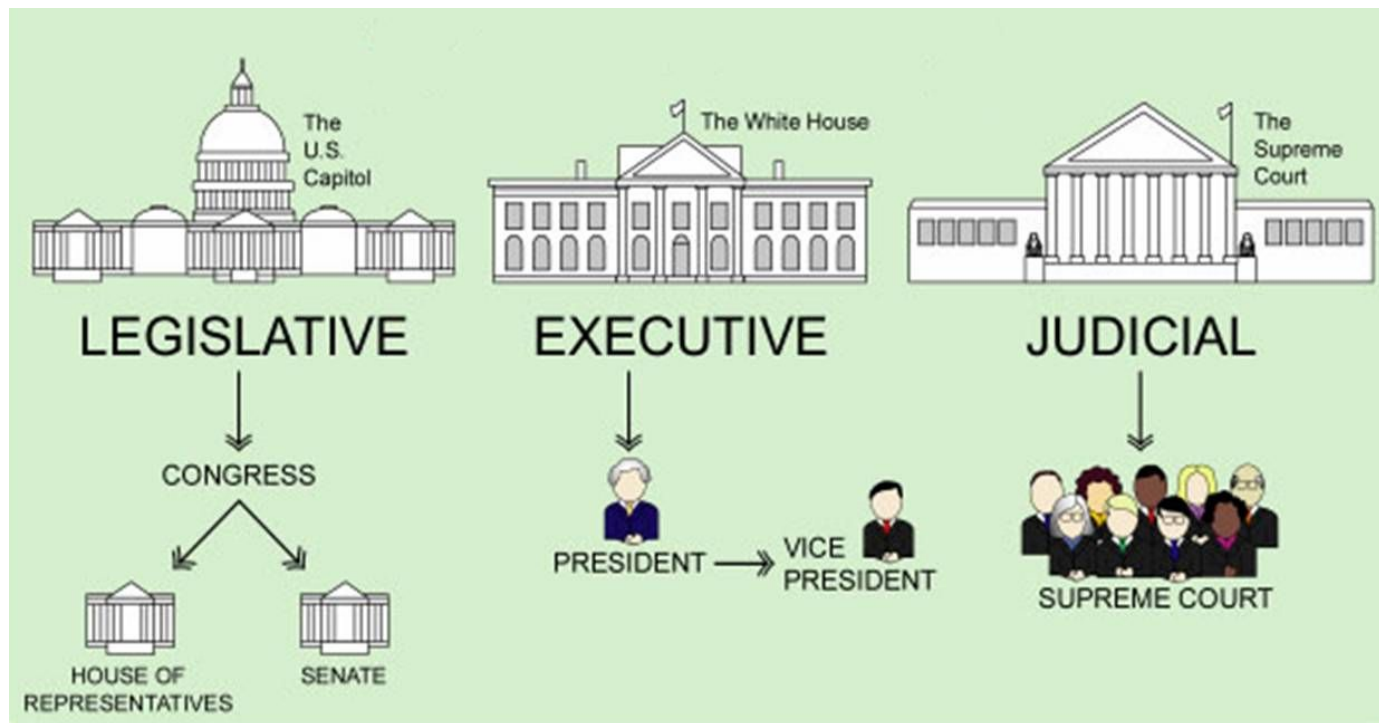
# What is Local Government?

How Local Government works in Marin County



First, what is **not** Local  
Government?

# Federal Government



# Marin's Federal Congressional Representation

## Senate

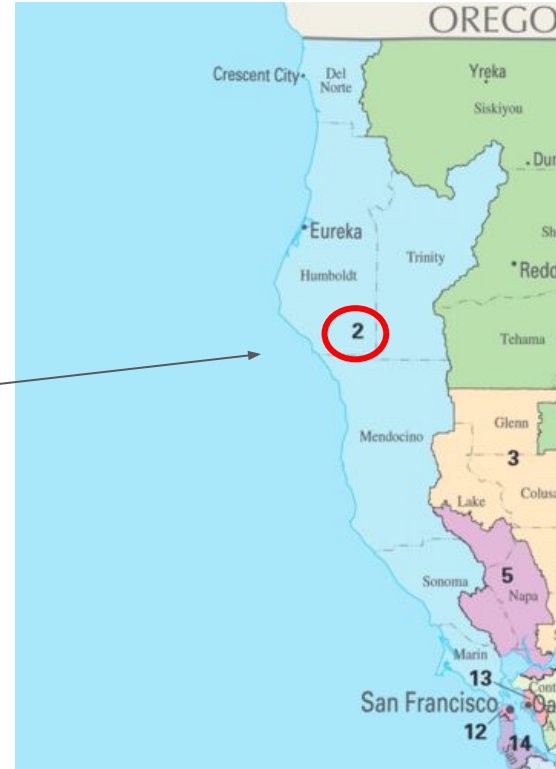
*Elected statewide*

- Dianne Feinstein
- Vacant

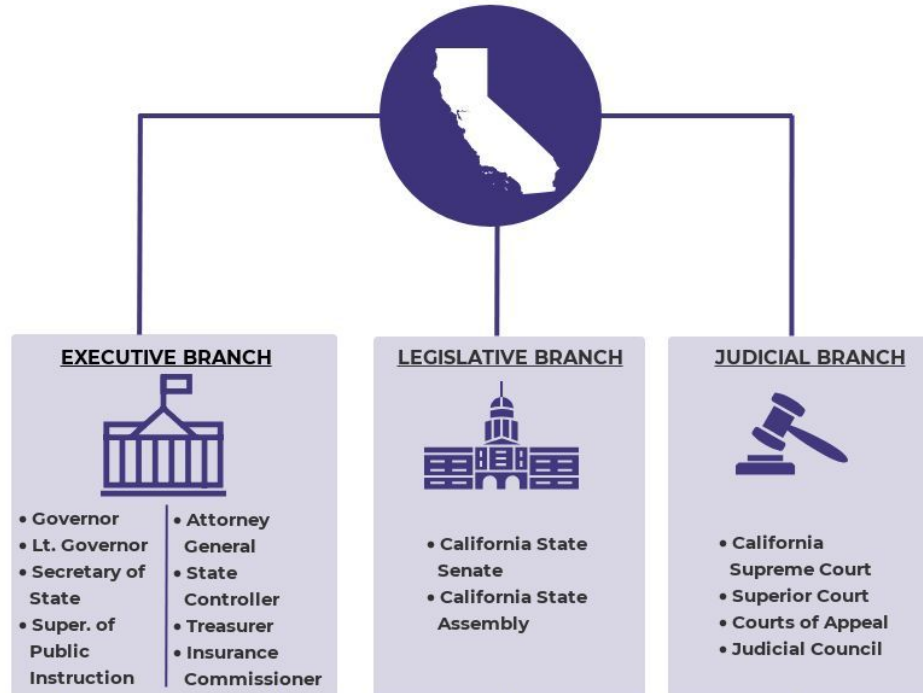
## House of Representatives

*Elected by geographic district*

- CA 2nd District: Jared Huffman



# State Government



# Marin's State Legislature Representation

## State Senate

*Elected by State Senate geographic district*

- 2nd District: Mike McGuire



## State Assembly

*Elected by State Assembly geographic district*

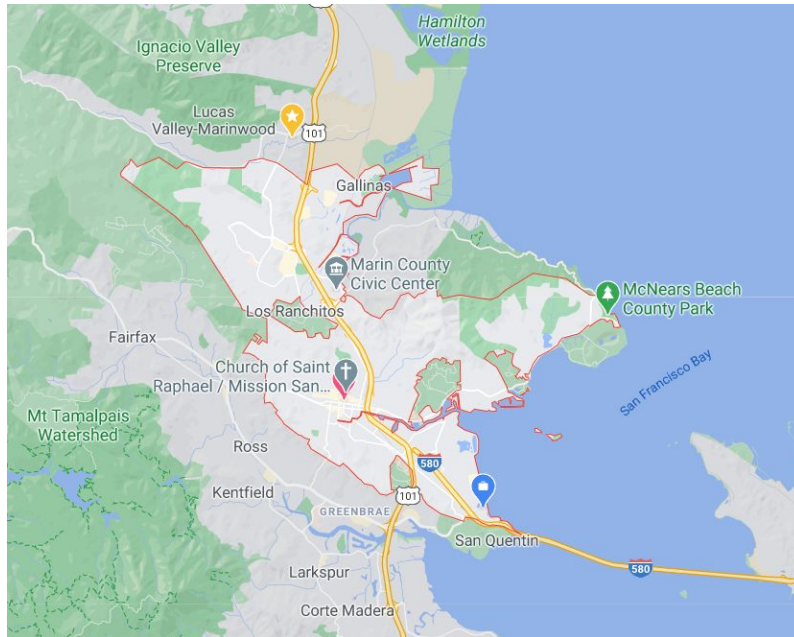
- 10th District: Marc Levine



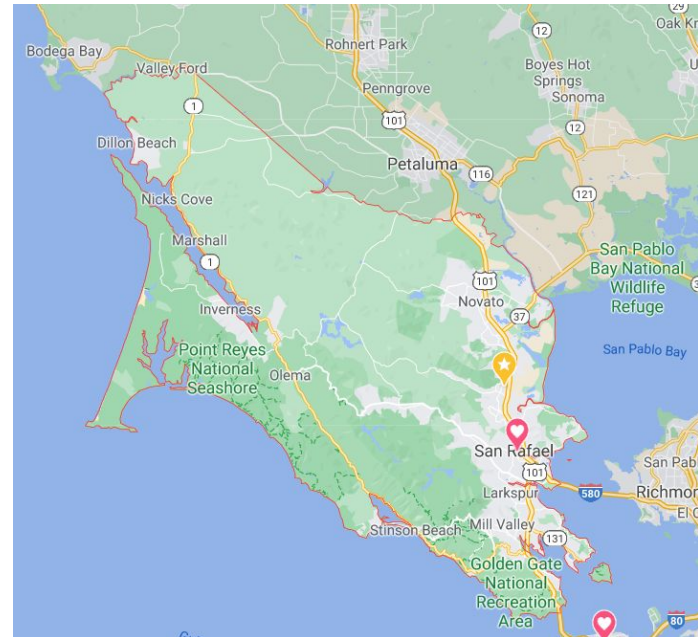
# Back to Local Government

# What is a local jurisdiction? *E.g. Why is San Rafael shaped like that?*

City of San Rafael - Incorporated



County of Marin - Unincorporated





# What does incorporated mean?

- A geographic area has voted to establish their own local government to provide public services. Incorporated local governments are governed by a locally elected City Council
- There are 11 incorporated Cities and Towns in Marin County
  - All residents residing outside of the geographic boundaries of these 11 incorporated Cities/Towns are in **unincorporated** Marin and governed by the County Board of Supervisors

# Incorporated vs. Unincorporated

## Incorporated (11)

- City of San Rafael
- Town of Corte Madera
- Town of Fairfax
- Town of Belvedere
- City of Novato
- Town of Tiburon
- Town of Ross
- City of Mill Valley
- City of Larkspur
- City of Sausalito
- Town of San Anselmo

## Unincorporated ([County of Marin](#)):

- Marin City
- Kentfield
- Strawberry
- Lucas Valley-Marinwood
- Santa Venetia
- Tamalpais-Homestead Valley
- Black Point-Green Point
- Bolinas
- Tomales
- Inverness
- Woodacre
- Muir Beach
- Nicasio
- San Geronimo
- Stinson Beach
- Pt. Reyes Station
- Lagunitas-Forest Knolls
- Dillon Beach
- Marshall
- Woodville

Local Governments  
can make their own  
laws

# Each jurisdiction makes its own governing rules and laws

*Also known as “Municipal Code” or “Code of Ordinances”*

- Local jurisdictions can make laws re: City building & planning, health and sanitation, speed limits, protection of open space, etc.
- State and Federal law still determine criminal, civil, welfare law, etc.



# Federal vs. State vs. Local law

Federal	State	Local
<ul style="list-style-type: none"><li>● Immigration law</li><li>● Bankruptcy law</li><li>● Social Security laws</li><li>● Anti-discrimination and civil rights</li><li>● Patent and copyright</li><li>● Federal criminal laws such as laws against tax fraud and the counterfeiting of money</li></ul>	<ul style="list-style-type: none"><li>● Criminal</li><li>● Divorce and family</li><li>● Welfare</li><li>● Wills and inheritances</li><li>● Real estate</li><li>● Business contracts</li><li>● Personal injuries</li><li>● Workers compensation</li></ul>	<ul style="list-style-type: none"><li>● Rent laws</li><li>● Zoning (who can put what &amp; where)</li><li>● Building codes</li><li>● Safety (traffic, health and sanitation)</li></ul>



## Example: Minimum wage

<b>Federal</b>	Sets national minimum wage. States minimum wage cannot be below
<b>State</b>	Sets statewide minimum wage. Local minimum wage cannot be below
<b>Local</b>	Sets minimum wage only for jurisdiction. E.g. County of Marin only has authority to set minimum wage for unincorporated areas

## Example: Food stamps

<b>Federal</b>	US Department of Agriculture provides federal funding for program
<b>State</b>	State administers CalFresh - SNAP program, determines eligibility, and issues EBT cards
<b>Local</b>	Administers enrollment, including collecting in-person applications and conducting interviews

## Example: Medicaid & Medicare

*(medical coverage for low-income individuals, 65 yrs or older, disability, etc.)*

<b>Federal</b>	Federal government (Congress & President) sets policies for medical coverage (e.g. Obamacare)
<b>State</b>	State administers Medi-Cal program, determines eligibility, and issues benefits
<b>Local</b>	Hires eligibility workers (funded through state & federal government) to sign up residents for Medi-Cal

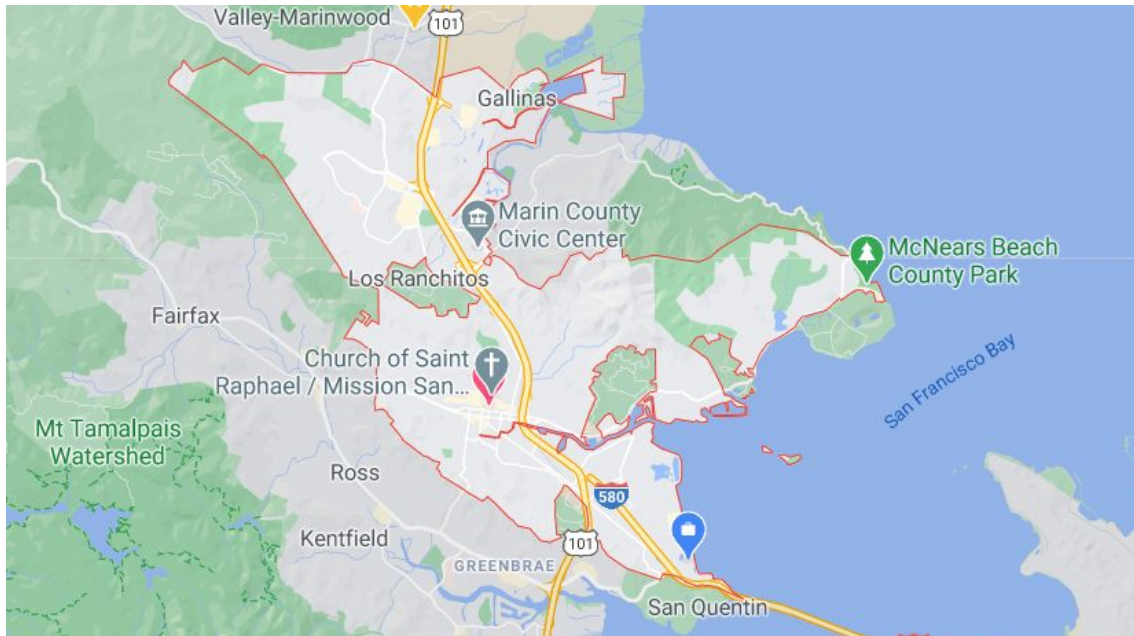


Local Government  
provides public  
services

# Aside from making laws, jurisdictions provide public services within their geographic borders

- Law enforcement
- Fire
- Parks
- Public Works
- Library
- Public records
- ...and more!





	<b>Jurisdiction</b>	<b>Street Address City</b>	<b>Law Enforcement</b>	<b>Roads maintained by</b>	<b>Fire/Paramedic Services</b>	<b>Building/Planning Permits issued by</b>
Inside the red line	<b>City of San Rafael</b>	San Rafael	San Rafael Police	San Rafael Public Works	San Rafael Fire Department	San Rafael Community Development Department
Outside the red line	<b>County of Marin</b>	San Rafael	Marin County Sheriff	County Public Works	Marin County Fire Department	County Community Development Agency

# Jurisdictions have boundaries



Why does the pavement on Sir Francis Drake Blvd change from nice, to not nice, to nice, and to not nice again as I drive from **Larkspur** → **Greenbrae/Kentfield** → **Ross** → **San Anselmo** → **Fairfax**?

The responsibility for maintenance/paving of Sir Francis Drake Blvd changes for each jurisdiction you drive through.

The paving of Sir Francis Drake Blvd is the responsibility of the [Town of Larkspur](#), then the [County of Marin](#) (Greenbrae/Kentfield are unincorporated), then the [Town of Ross](#), then the [Town of San Anselmo](#), then the [Town of Fairfax](#).

# Why doesn't the condition of the highway pavement change?

Caltrans (a State agency) maintains all freeways and highways in California

**Caltrans = California Department of Transportation**



# Comparing Jurisdictions in Marin

\*San Rafael has the County's only elected Mayor (elected At Large). All other City/Town Mayors and Board of Supervisors President is chosen by Council/BOS body

Total Marin County pop. = ~260,000	Pop.	How They're Elected	Employees (FTE)	General Fund Budget
County of Marin (Unincorporated)	68,659	Districts	2,348	\$466,000,000
<b>City of San Rafael</b>	<b>57,374</b>	<b>Districts*</b>	<b>407</b>	<b>\$80,880,000</b>
Town of Corte Madera	9,191	At Large	26	\$20,000,000
Town of Fairfax	7,410	At Large	33	\$11,070,000
Town of Belvedere	2,118	At Large	20	\$7,500,000
City of Novato	51,206	Districts	205	\$42,000,000
Town of Tiburon	8,895	At Large	41	\$12,800,000
Town of Ross	2,079	At Large	22	\$9,600,000
City of Mill Valley	13,810	At Large	154	\$40,900,000
City of Larkspur	11,870	At Large	34	\$16,300,000
City of Sausalito	7,047	At Large	73	\$20,200,000
Town of San Anselmo	12,273	At Large	39	\$16,400,000

# County Government

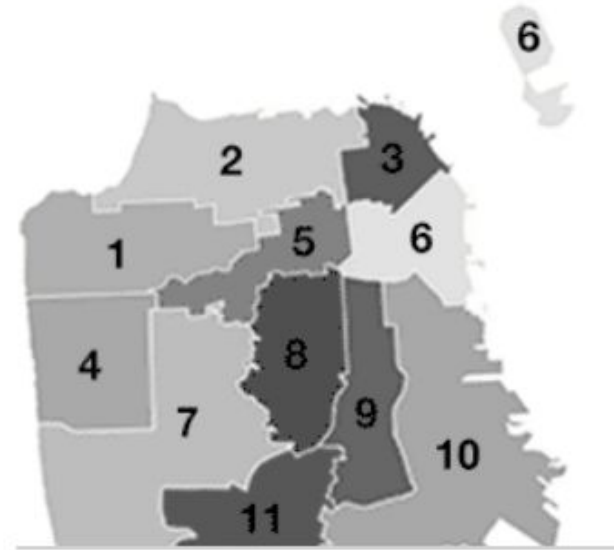
*County of Marin (Unincorporated)*



# County Government

- There are 58 Counties in California
- They are all governed by a Board of Supervisors elected by all County residents
  - Size of Board of Supervisors can range
    - County of Marin: 5
    - County of Los Angeles: 5
    - City/County of San Francisco\*: 11

*\*San Francisco is uniquely both a County and a City. It is the only County like that in California*



San Francisco Districts

# County of Marin Government



Damon Connolly  
DISTRICT 1



Katie Rice (President)  
DISTRICT 2



Kathrin Sears  
DISTRICT 3



Dennis Rodoni (Vice  
President)  
DISTRICT 4



Judy Arnold  
DISTRICT 5

[www.marincounty.org](http://www.marincounty.org)


Select Language ▾ Accessibility **A A A** Text Resize **✔** Skip To Main Content

marincounty.org

COUNTY OF  
MARIN

Find services, forms and information  Search

[Home](#) [HOW DO I?](#) [GOVERNMENT](#) [FOR RESIDENTS](#) [FOR BUSINESS](#) [RECREATION](#) [CONTACTS](#)



**Marin Hospital, Clinics and Public Health Prepare for Vaccine Rollout's Next Phase**

◀ ▶ ○ ● ○ ○ ○ ○

# Three County Supervisorial Districts overlap with City of San Rafael Jurisdiction

Central and Northern San Rafael, Pt. San Pedro Peninsula = **District 1**  
(*Supervisor Damon Connolly*)

Canal = **District 4** (*Supervisor Dennis Rodoni*)

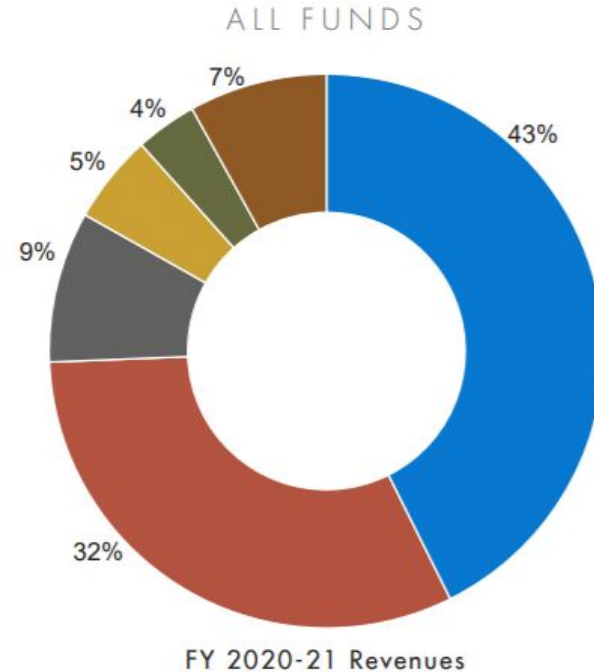
Gerstle Park, Bret Harte = **District 2**  
(*Supervisor Katie Rice*)



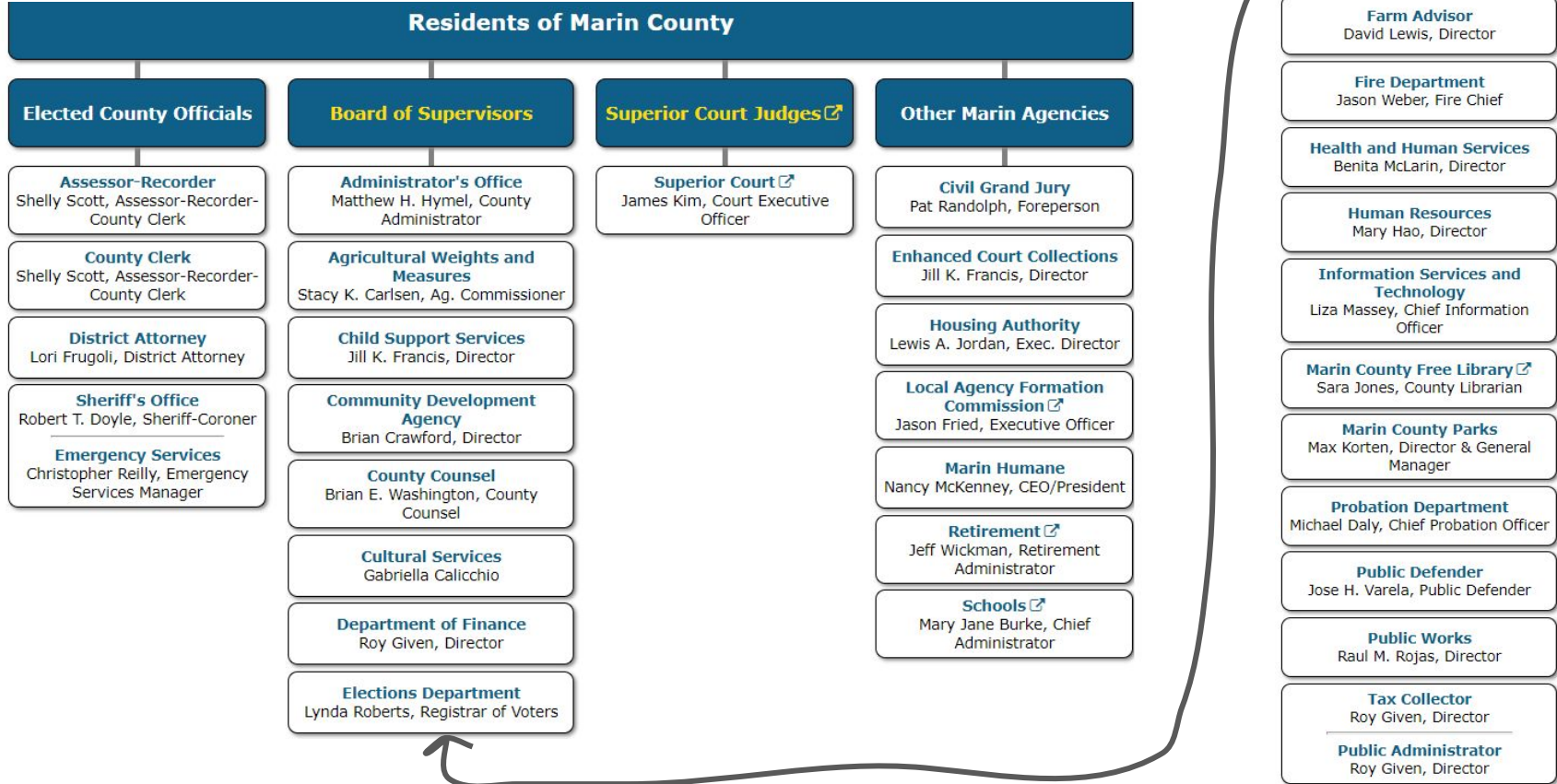
# Where the County gets its \$ from

Revenues		
Taxes	\$268,642,816	43%
Intergovernmental	\$200,037,221	32%
Service Charges	\$55,352,475	9%
Miscellaneous	\$29,656,036	5%
Licenses, Permits and Fees	\$22,532,645	4%
Use of Fund Balance	\$43,542,506	7%
<b>Total Revenues</b>	<b>\$619,763,699</b>	

*Taxes = property taxes and sales taxes*



# County of Marin Government





# County of Marin Government

Residents of Marin

## Elected County Officials

## Board of Supervisors

### Assessor-Recorder

Shelly Scott, Assessor-Recorder-County Clerk

### Administrator's Office

Matthew H. Hymel, County Administrator

### County Clerk

Shelly Scott, Assessor-Recorder-County Clerk

### Agricultural Weights and Measures

Stacy K. Carlsen, Ag. Commissioner

### District Attorney

Lori Frugoli, District Attorney

### Child Support Services

Jill K. Francis, Director

### Sheriff's Office

Robert T. Doyle, Sheriff-Coroner

### Community Development Agency

Brian Crawford, Director

### Emergency Services

Christopher Reilly, Emergency Services Manager

### County Counsel

Brian E. Washington, County Counsel

### Cultural Services

Gabriella Calicchio

### Department of Finance

Roy Given, Director

### Elections Department

Lynda Roberts, Registrar of Voters

### Farm Advisor

David Lewis, Director

### Fire Department

Jason Weber, Fire Chief

### Health and Human Services

Benita McLarin, Director

### Human Resources

Mary Hao, Director

### Information Services and Technology

Liza Massey, Chief Information Officer

### Marin County Free Library

Sara Jones, County Librarian

### Marin County Parks

Max Korten, Director & General Manager

### Probation Department

Michael Daly, Chief Probation Officer

### Public Defender

Jose H. Varela, Public Defender

### Public Works

Raul M. Rojas, Director

### Tax Collector

Roy Given, Director

### Public Administrator

Roy Given, Director

Departments circled in red provide countywide services

Departments not circled provide services to only unincorporated areas

Sheriff is unincorporated only. Coroner & Jail is countywide

# Countywide Services: Health & Human Services

The Health and Human Services Service Area includes five divisions within the Department of Health and Human Services that deliver, coordinate, and administer a range of federal, state, and local programs that address the County's health and welfare needs, including homelessness, mental health and other safety net services.

- Behavioral Health and Recovery: mental health services and treatment programs
- Public Health Services
- Social Services: administers public assistance programs





# Countywide Services: District Attorney

## **District Attorney**

The District Attorney is the elected public prosecutor whose office is responsible for attending to the courts and conducting all prosecutions for public offenses on behalf of the people.



# Countywide Services: Probation

## Probation

The core functions of the Probation Department include supervising adults and juveniles under court-ordered probation, and managing the County of Marin's Juvenile Hall facility.



# Countywide Services: Public Defender

## **Public Defender**

The Public Defender provides legal outreach to underserved communities and legal representation for indigent persons.



# Countywide Services: Sheriff's Office

## **Marin County Sheriff's Office**

The Sheriff is an elected official whose office provides services including patrol and investigations, court security, **county jail operations**, **coroner services**, and management of the emergency operations center.

- County jail operations and coroner services are countywide services



# Countywide Services: Assessor-Recorder-County Clerk

## **Assessor-Recorder-County Clerk**

The Assessor-Recorder-County Clerk is an elected position whose office determines the value of taxable real and business property in the County and maintains access to official, vital, and historical records.





# Countywide Services: Elections

## **Elections**

The Elections Department maintains current voter registration files; conducts federal, state and local elections within Marin County; and administers local provisions of campaign financing and reporting.



# Countywide Services: Child Support Services

## **Child Support Services**

The primary responsibilities of the Department of Child Support Services are to establish and enforce paternity and child support orders.



# Countywide Services: Agriculture, Weights and Measures

## **Agriculture, Weights and Measures**

The Agriculture, Weights and Measures Department oversees the pest control program, ensures the accuracy of commercial weight and measuring devices and regulates organic food production.





# Countywide Services: Farm Advisor

## **UCCE Farm Advisor**

The University of California Cooperative Extension Farm Advisor provides outreach and educational programs that promote sustainable agriculture and landscapes, effective watershed management and 4-H youth development.



# Countywide Services: Cultural Services

## **Cultural Services**

Cultural Services offers engaging and diverse programming at the Marin Center, produces the annual Marin County Fair and conducts the docent tour program for the Frank Lloyd Wright-designed Civic Center.



City Government

*City of San Rafael (Incorporated)*

# City of San Rafael Government

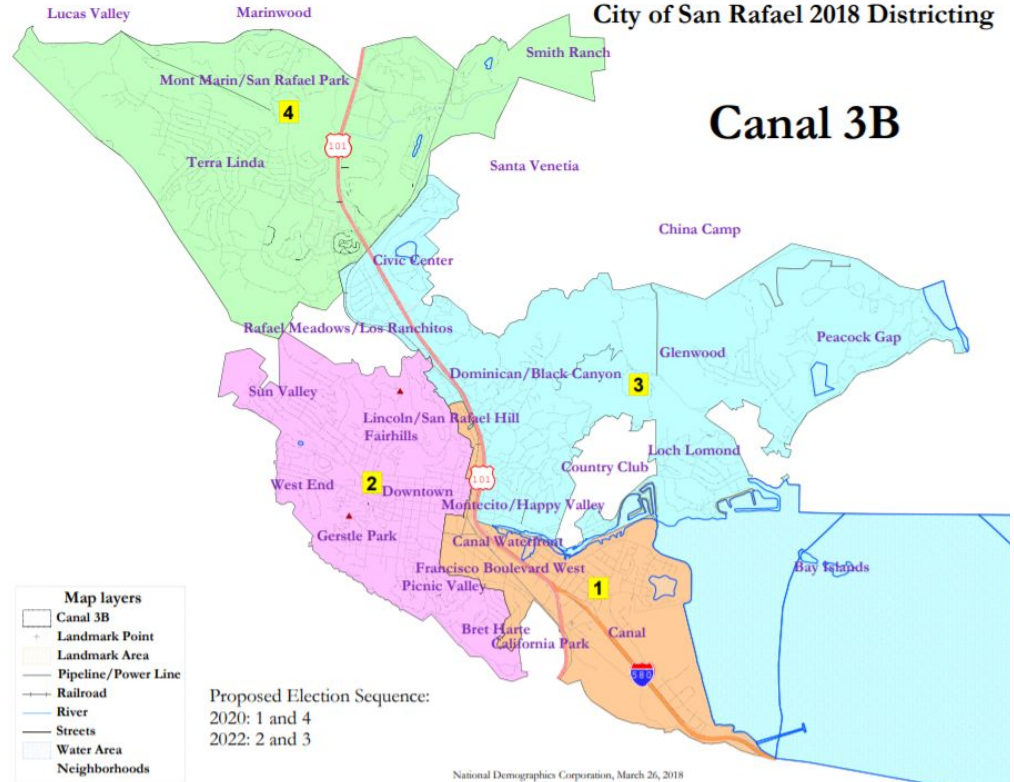
**District 1:** Maika Llorens Gulati

**District 2:** Vacant

**District 3:** Maribeth Bushey

**District 4:** Rachel Kertz

**Mayor:** Kate Colin



[www.cityofsanrafael.org](http://www.cityofsanrafael.org)

**SAN RAFAEL**  
THE CITY WITH A MISSION

RESIDENTS   BUSINESSES   VISITORS   DEPARTMENTS   NEWS   EVENTS   CONTACT

City facilities are open for appointments. [Learn about the services you are interested in.](#)  
[COVID-19 \(coronavirus\) information and resources.](#)

**Welcome to San Rafael**  
Discover what San Rafael can do for you.

How can we help you?

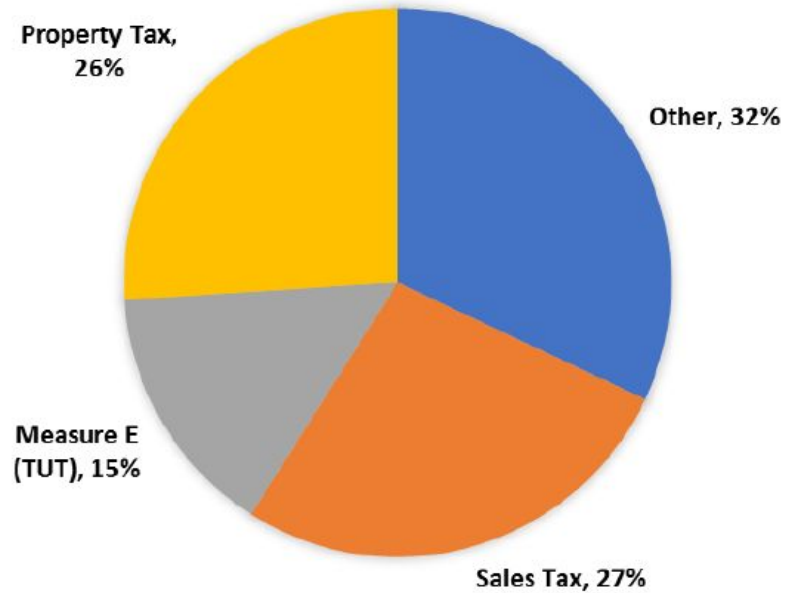
A Street

ENJ

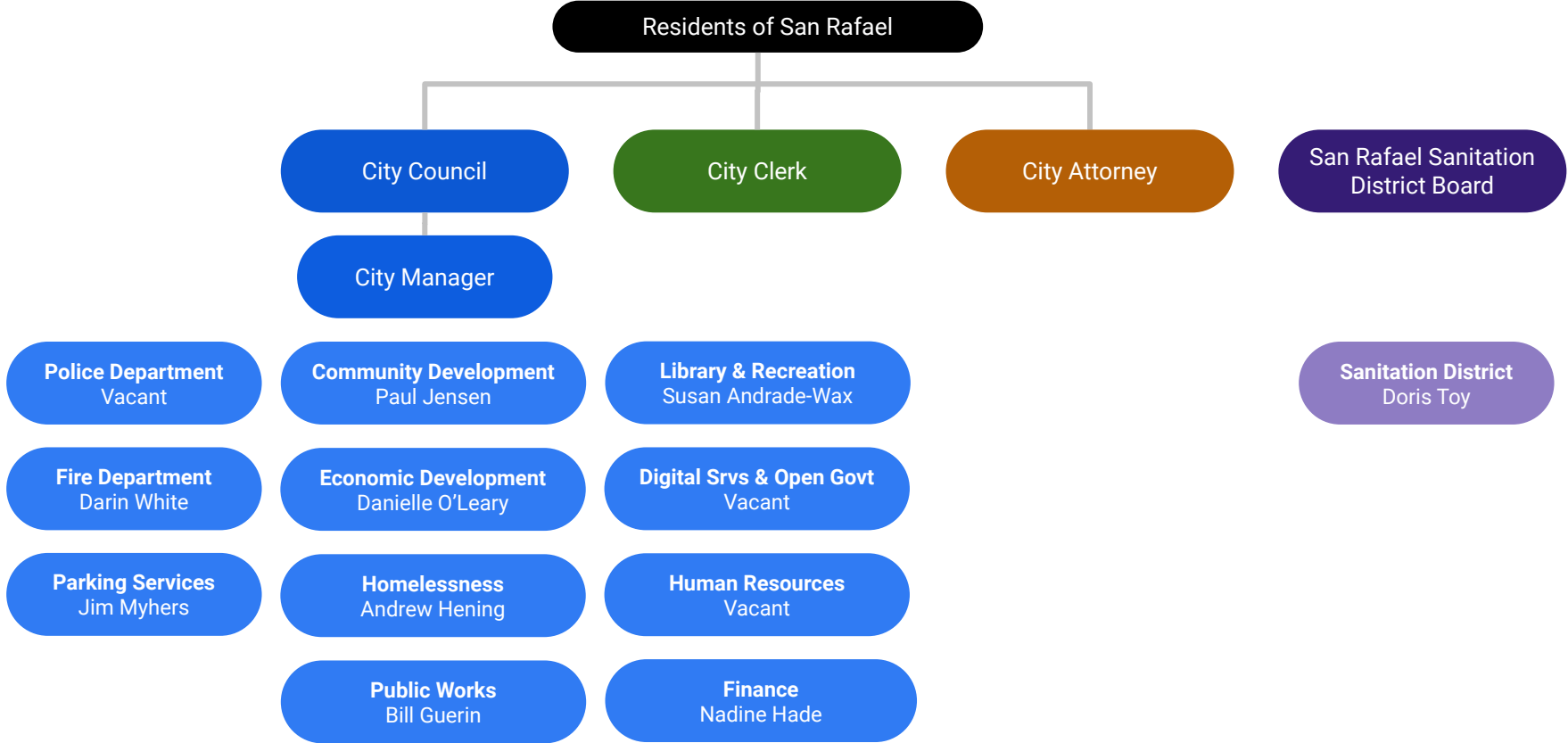


# Where the City gets its \$ from

## General Fund Revenues - \$80.3 million



# City of San Rafael Government



# City-only Services: City Manager

- Manages all City departments
- Legislative advocacy





# City-only Services: Police Department

- Crime response
- Traffic enforcement
- Investigations
- Homeless outreach



# City-only Services: Fire Department

- Fire response
- Paramedic/medical services
- Emergency preparedness and response
- Vegetation Management



# City-only Services: Parking Services

- Parking meters, garages and enforcement
- *Enterprise fund (e.g. funded entirely by revenue received from parking fees & citations)*



# City-only Services: Community Development

- Planning
- Building
- Code Enforcement





# City-only Services: Economic Development

- Support to City businesses
- Cannabis Program
- Affordable housing
- Downtown events



# City-only Services: Homelessness

- Coordination with County Department, Service Providers, Marin Housing Authority



# City-only Services: Public Works

- Streets, Parks, Facilities Maintenance
- Storm preparedness and response
- Fleet Vehicle Maintenance
- Traffic Engineering
- Capital Engineering (incl. roads)
- Land Development





# City-only Services: Library & Recreation

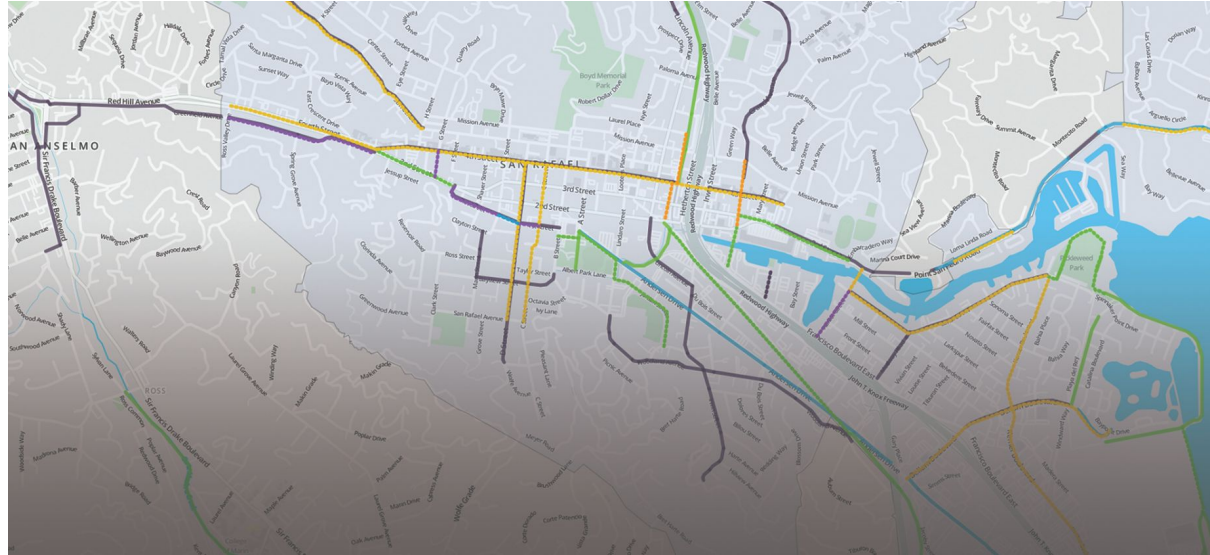
- Recreation & Childcare
  - Enterprise fund
- Library & Arts
  - *Funded by special parcel tax dedicated to public library services*





# City-only Services: Digital Services and Open Government

- Information Technology (IT) support for all City departments
- Public communication
- Open data initiatives



# City-only Services: Human Resources

- Hiring
- Benefits administration
- Employee & labor relations



# City-only Services: Finance

- Accounting and financial reports
- Budget
- Purchasing and payroll
- Tax collection
- Business Licenses



**SAN RAFAEL**  
THE CITY WITH A MISSION

COMPREHENSIVE ANNUAL FINANCIAL REPORT  
FOR THE FISCAL YEAR ENDING JUNE 30, 2020



# City-only Services: City Clerk

- Administers elections
- Custodian of City records
- Manages City Council agenda and documents



# City-only Services: City Attorney

- Provides legal assistance, advice & defense to all City of San Rafael government





# City-only Services: San Rafael Sanitation District

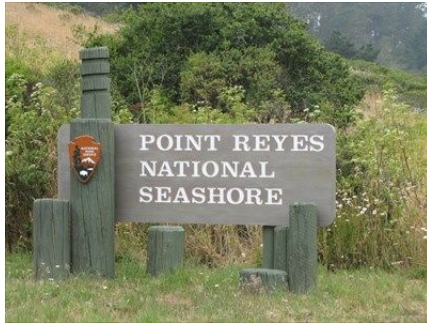
- Overseen by Board of Directors (3)
- Sewer system maintenance
- Funded by a service rates to customers
- Services 94901 zip code in San Rafael. 94903 zip code is serviced by Las Gallinas Valley Sewer District



More government!

# Whose park is it anyway?

*Federal*



National Parks  
Service (NPS)

*State*



CA State Parks

*County*



County of  
Marin Parks &  
Open Space

*City*



City of San Rafael  
Parks & Open  
Space



# Other Public Entities in Marin County

Public Entity	What they do	Overseen by	Funded by
<b>Marin County Superior Court</b>	<i>Civil, criminal, family, juvenile, probate, small claims, traffic courts</i>	Presiding Judge (12 elected Judges total) - elected	State
<b>Marin County Office of Education</b>	<i>Oversees Marin Counties 18 school districts</i>	Marin County Board of Education (7) - elected	Property taxes
<b>College of Marin</b>	<i>Community College</i>	Board of Trustees (7) - elected	Local property taxes, State
<b>Housing Authority</b>	<i>Provides housing for low &amp; moderate income people (housing vouchers and construction of new housing)</i>	Housing Authority Commission (7) - appointed by County Board of Supervisors	HUD (Federal Dept of Housing and Urban Development)
<b>Sewer Districts</b>	<i>Sewer services and treatment plants</i>	Various boards - appointed or elected	Rates charged
<b>California Highway Patrol (CHP)</b>	<i>Traffic law enforcement on highways</i>	State	State
<b>US National Park Service</b>	<i>Headlands, Muir Woods, Point Reyes</i>	US Department of the Interior (led by Director nominated by President)	Federal
<b>CA State Parks</b>	<i>Mt. Tamalpais, China Camp, Angel Island, Samuel P. Taylor</i>	CA Department of Parks & Recreation	State

# Other Public Entities in Marin County - Transportation

Public Entity	What they do	Overseen by	Funded by
<b>Metropolitan Transportation Agency (MTC)</b>	<i>Responsible for planning, financing and coordinating transportation for 9-county SF Bay Area (streets, roads, highways, transit systems, airports)</i>	Commissioners (21) - appointed elected officials	Grants and misc. local sources
<b>Transportation Authority of Marin (TAM)</b>	<i>Coordinates funding for many transportation projects and serves as Congestion Management Agency</i>	Board of Commissioners (16) - appointed by each City/Town councils and Board of Sups	Local transportation sales tax
<b>Sonoma Marin Area Rail Transit (SMART)</b>	<i>Passenger rail service from Sonoma to Marin County</i>	Board of Directors (12) - appointed elected officials in Marin & Sonoma and representatives from Golden Gate bridge district	Measure Q sales tax (passed in 2008) and ridership fares
<b>Marin Transit</b>	<i>Local transit service within Marin County</i>	Board of Directors (7) - appointed elected officials	Sales tax, State transportation \$, fares
<b>Golden Gate Transit</b>	<i>Bus and ferry transportation between Marin, SF, Sonoma, Napa, Mendocino, and Del Norte counties</i>	Board of Directors (19) - appointed elected officials in 6 counties served	Bus & ferry fares, GG bridge toll
<b>CalTrans (District 4)</b>	<i>Construction &amp; maintenance of highways</i>	State	State