

Development Opportunities

Underutilized Sites



About Us

Santa Ana is Downtown to the world famous Orange County, California. It is the County Seat, the second-most populous city in Orange County, and is home to a vibrant evening scene and arts community. Our centralized location places us at a strategic advantage in Southern California, making us the perfect city to open a new business, expand current businesses, and break ground on new development.

This document is comprised of development opportunities for underutilized sites in the city.

Thank you for your interest in the City of Santa Ana, we look forward to doing business with you soon.



Fairview & Edinger

2630 W. Edinger Ave

5.2 acre site

Zone: C1



Grand & 17th

1900 N. Grand Ave

8.9 acre site

Zone: C4

**Dollar General
Market Center**

1445 S. Main St.

3.4 acre site

Zone: C2



A1 Foam & Fabric

1812 S. Main St.

3.1 acre site

Zone: CSM

Bristol Swap Mall

1120-1212 S. Bristol

9.7 acre site

Zone: C1



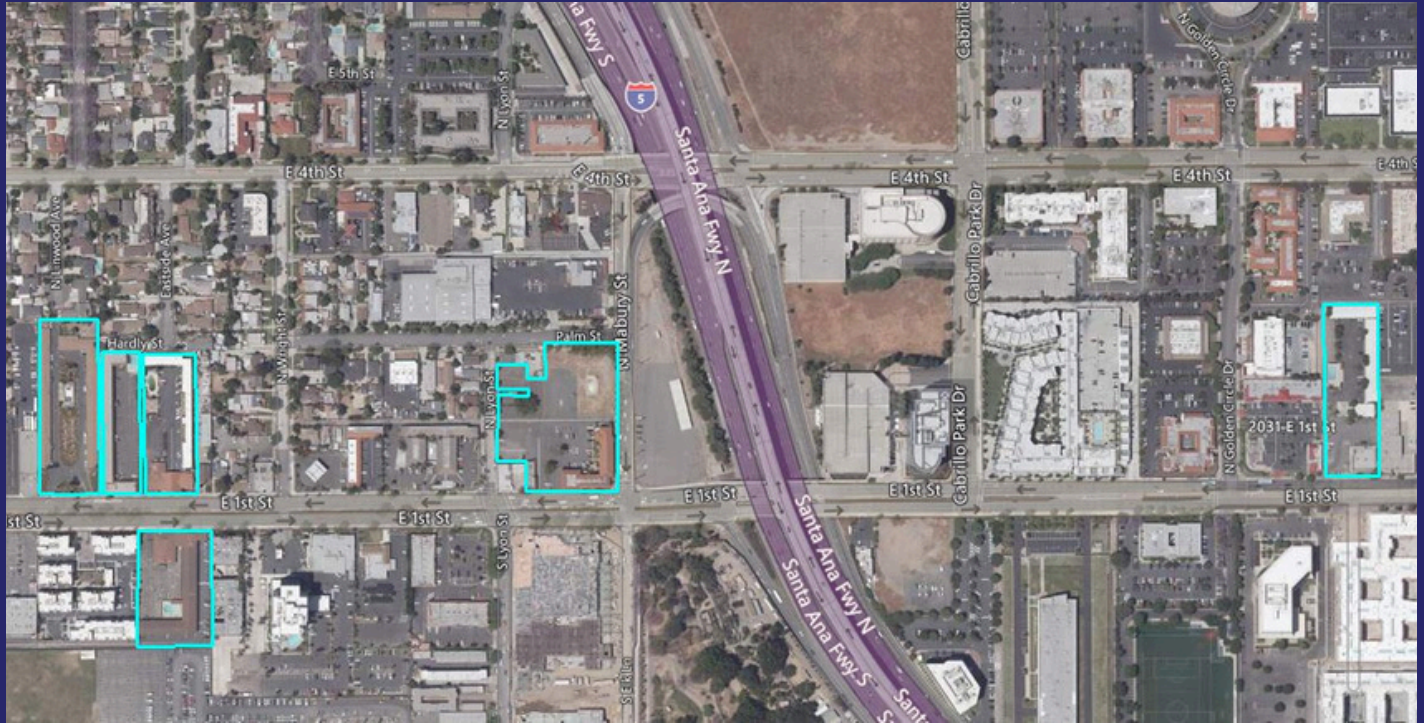
Food 4 Less

315 E. 1st St.

9.1 acre site

Zone: SD84

1st Street: between the & Freeway

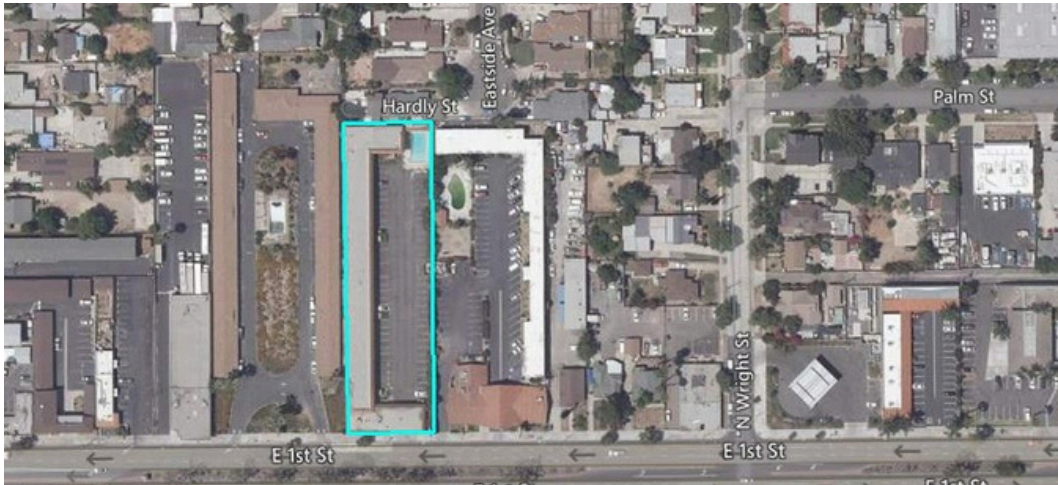


Sunshine Village

1427 E. 1st St.

1.93 acre site

Zone: C2



El Cortez Lodge

1503 E. 1st St.

1.07 acre site

Zone: C2

Royal Grand Inn*

1515-1519 E. 1st St.

1.36 acre site

Zone: C2

*Includes Mariscos Puerto Nuevo



Saddleback Lodge*

1659 & 1661 E. 1st St.

1.28 acre site

Zone: C2

*Includes Saddleback Liquor

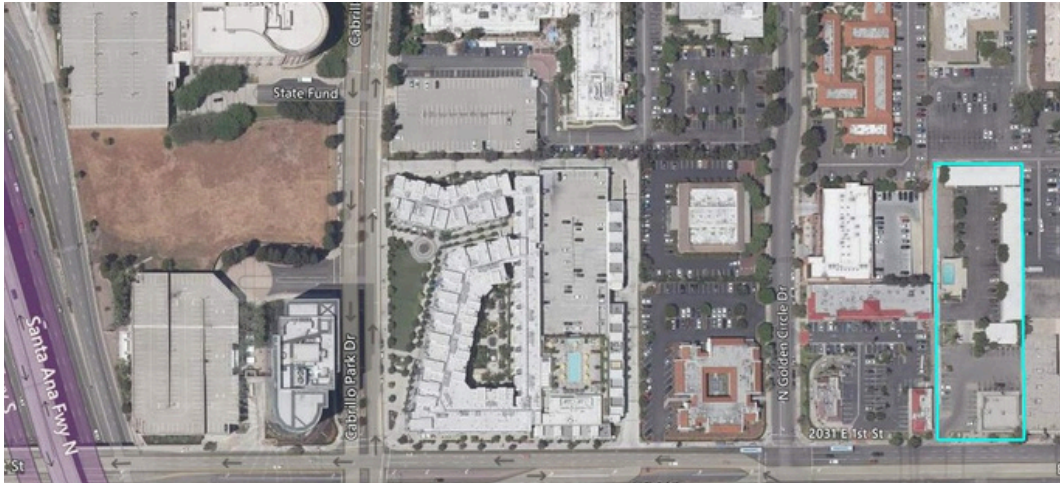
Royal Roman Motel*

1502 & 1504 E. 1st St St.

1.5 acre site

Zone: C2

*Includes Mariscos El Tapatio



Sunland Motel

2111 E. 1st St.

1.8 acre site

Zone: C1



Interested in these sites?

Contact:

Marc Morley

Economic Development Manager

mmorley@santa-ana.org

(714) 647-5477

Opportunity in the Heart of Orange County



Headquarters to:



First American





WWW.SANTA-ANA.ORG/BUSINESS