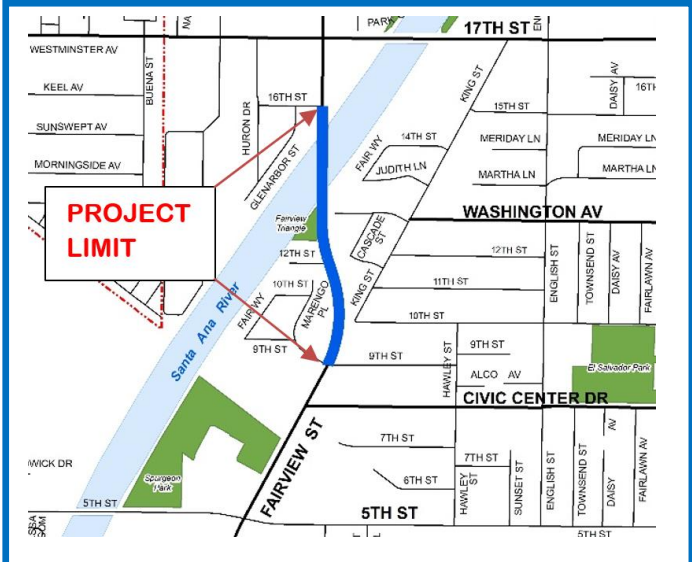
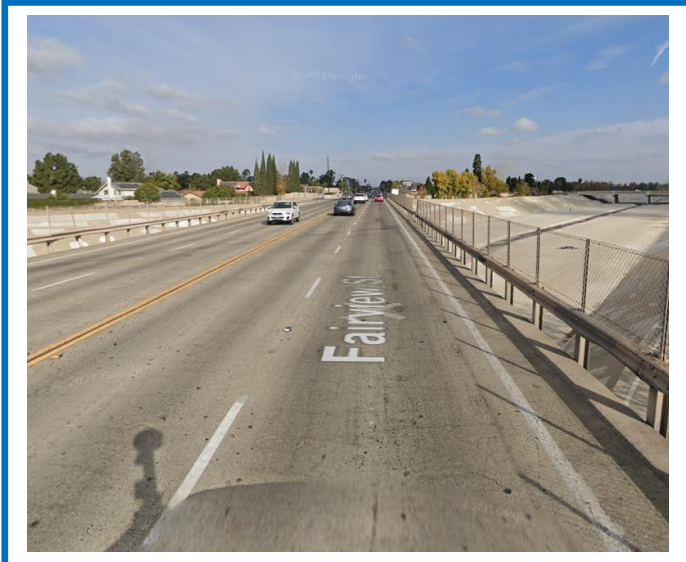




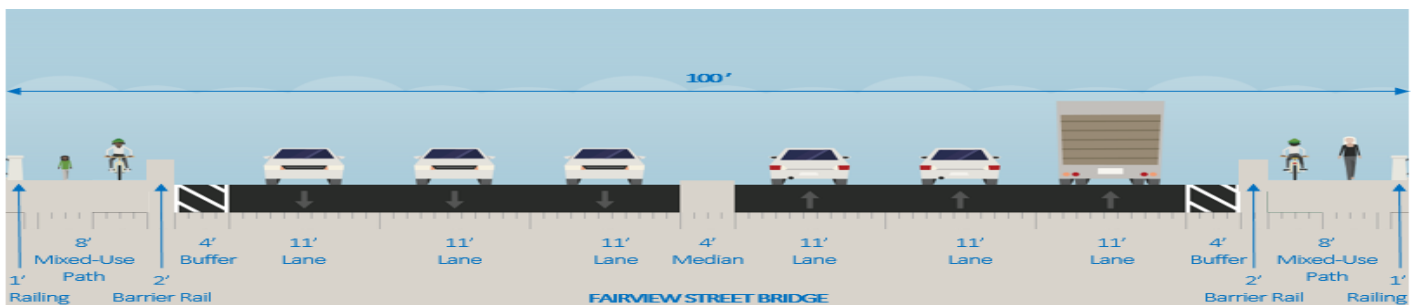
FAIRVIEW BRIDGE REPLACEMENT AND STREET IMPROVEMENTS (9TH STREET TO 16TH STREET)

JULY 2021



PROJECT INFORMATION

- The improvements consist of replacing the bridge; widening the roadway from 2 lanes to 3 lanes in each direction; resurfacing street pavement; installing new raised landscaped median, bike lanes, sidewalks, street lights, and iconic City landmarks as aesthetic features on bridge railings.
- Safety and accessibility features include protected bike lanes on the bridge with barriers to separate the bicyclists/pedestrians from the motorists, street lights, and curb ramps.
- Current Status: Finalize design plans by September 2021
- Construction: From summer 2022 to 2024
- Total Project Estimated Cost: \$24 million
- Funding sources include Federal Highway Bridge Programs and Orange County Transportation Authority Measure M2



PUBLIC WORKS AGENCY

For more information, please contact Public Works Agency Project Manager Kenny Nguyen at (714) 647-5013 or fairview@santa-ana.org.

Or visit City website at <https://www.santa-ana.org/pw/fairview-bridge-replacement-and-street-improvements>



Frequently Asked Questions Fairview Street and Bridge Project

1. Why is the Fairview Street Project being done?

The existing conditions along Fairview Street between 9th Street to 16th Street have several unsafe features including the lack of sidewalks and bike lanes, and structurally deficient bridge guardrails. The substantial congestion during peak periods warrants widening the bridge to add lanes.

2. Will there be any Right of Way impact for this project?

Yes. Right of way acquisition is required to provide sufficient sight distance for motorists to enter Fairview Street safely from 9th Street. There will be one full parcel acquisition at the northwest corner of 9th Street and Fairview Street and two partial parcels acquisition just to the north.

3. Will the project bike lanes have a buffer or be protected?

Yes. Barriers will be installed on the bridge to separate the bicyclists and pedestrians from the motorists. This configuration offers much better protection than a standard bike buffer.

4. What type of aesthetic features are shown on the bridge railings?

The aesthetic features will entail the City of Santa Ana iconic landmarks (including the water tower and Bower museum), the City tree (Jacaranda tree), City flower (Hibiscus flower), and the City bird (parrot) and Santa Ana wind waves on both exterior and interior railings so travelers can view these features from both the roadway and the Santa Ana River Trail.

5. How can the City prevent encampments underneath the bridge?

Boulders will be imbedded into the concrete slope underneath the bridge abutments to deter encampments.

6. What type of plants are proposed for the raised median?

The proposed trees and shrubs selected for the project will be drought tolerant. The plants/shrubs/trees include Crape Myrtle, London Plane, California Sycamore, Foxtail Agave, Tangerine Stalked Bulbine, and Coast Rosemary.

7. When will project construction start?

The construction activities are planned to commence in summer 2022.

8. Will there be road closures during the construction period?

No. Fairview Street will have at least one lane in each direction open over the duration of construction.

9. Will I be notified when the construction starts?

Yes. In addition, the City will host several community meetings to provide the public with the latest updates and address any concerns prior to and during construction.

10. If I have more questions, who can I contact?

There are two ways to contact the City for additional questions or information:

Call the Public Works Agency at [\(714\) 647-5013](tel:7146475013) or email fairview@santa-ana.org