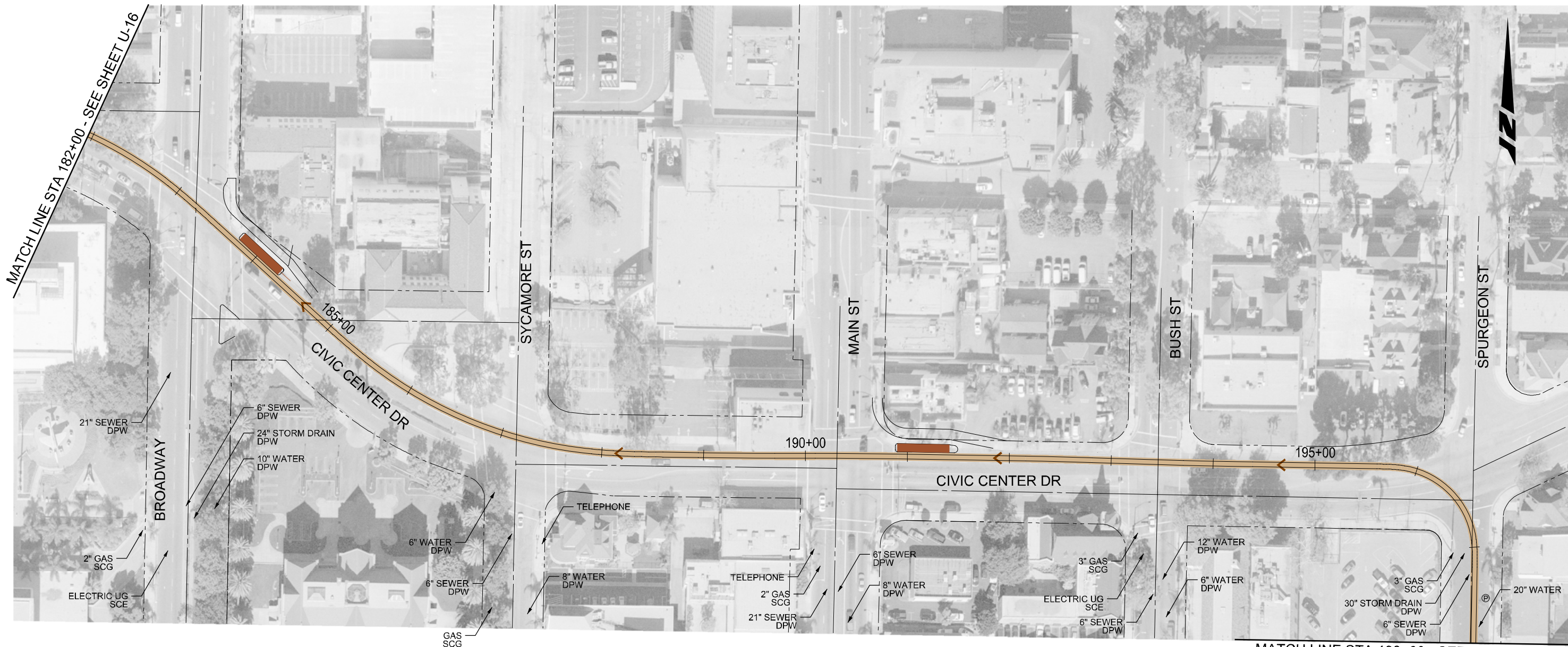


*This page left blank intentionally.*



**LEGEND**

---	W	---	WATER
---	S	---	SEWER
---	G	---	GAS
---	E	---	ELECTRICAL
---	CATV	---	CABLE
---	T	---	TELEPHONE
---		---	TRACK

**ABBREVIATIONS**

SCE	SOUTHERN CALIFORNIA EDISON
DPW	DEPARTMENT OF PUBLIC WORK
SCG	SOUTHERN CALIFORNIA GAS

**C** CORDOBA CORPORATION  
 2677 NORTH MAIN STREET, SUITE 240  
 SANTA ANA, CA 92705  
 714.558.6124 PH - 714.558.8467 FAX

**OCTA** **G** GARDEN GROVE

**SANTA ANA AND GARDEN GROVE  
 FIXED GUIDEWAY CORRIDOR**  
 EXISTING UTILITY PLANS  
 DOWNTOWN SEGMENT - ALT 2  
 STA 182+00 WB TO STA 198+00 WB

DRAWING NO.	U - 17
SHEET NO.	
SCALE	HOR: 1"=100'

*This page left blank intentionally.*

**Exhibit A-2**  
**Area of Potential Effect**

*This page intentionally left blank.*



U.S. Department  
of Transportation  
**Federal Transit  
Administration**

REGION IX  
Arizona, California,  
Hawaii, Nevada, Guam  
American Samoa,  
Northern Mariana Islands

201 Mission Street  
Suite 1650  
San Francisco, CA 94105-1839  
415-744-3133  
415-744-2726 (fax)

**OCT 7 2011**

Mr. Milford Wayne Donaldson, FAIA  
State Historic Preservation Officer  
Office of Historic Preservation  
California Department of Parks and Recreation  
1725 23rd Street, Suite 100  
Sacramento, CA 95816

Re: Santa Ana/Garden Grove Fixed Guideway  
Corridor Project, Orange County, CA  
Section 106 Consultation /36 CFR Part 800

Attention: Ms. Amanda Blosser, Project Review Unit

Dear Mr. Donaldson:

The Federal Transit Administration (FTA) is requesting the delegation of Section 106 coordination with the State Historic Preservation Office to the City of Santa Ana for the Santa Ana and Garden Grove Fixed Guideway Corridor Project (Project). FTA also requests your concurrence in the adequacy and appropriateness of the Area of Potential Effect (APE) for the Project pursuant to our responsibilities for compliance with Section 106 of the National Historic Preservation Act of 1966, as amended, and associated implementing regulations 36 CFR 800.

FTA in cooperation with the Orange County Transportation Agency (OCTA) and the City of Santa Ana proposes to construct the Project within the Cities of Santa Ana and Garden Grove, California. The Project encompasses the Santa Ana Regional Transportation Center/Metrolink station and a portion of Pacific Electric right-of-way, formerly a historic trolley line. (See Fig. 1) The Project would link the Santa Ana Regional Transportation Center with a transit center in Garden Grove near the intersection of Harbor Bd. and Westminster Av. Several alignment alternatives are being studied. All fall within the area bounded by Harbor Bd. (western boundary), Grand St. (eastern boundary) 1<sup>st</sup> St (southern boundary), and Westminster Av./17<sup>th</sup> St.(northern boundary).

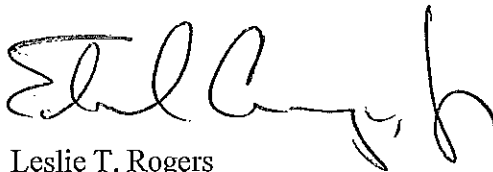
The APE boundaries encompass the fixed-guideway corridor and two possible maintenance sites for the fixed guideway system. For historic and architectural resources, the APE includes all parcels directly affected by or adjacent to the fixed guideway corridor, all proposed construction and construction staging areas, all right of way acquisition areas, all streets that require alteration,

and the area of ground that would be disturbed during construction of the undertaking. If future environmental studies (e.g., noise and vibration, or visual and aesthetic studies) indicate there is a potential for increasing the APE, the additional area would be added to the APE when the information becomes available.

FTA is requesting your concurrence with the APE definition and delegation of Section 106 coordination within 30 days of receipt of this letter. If we do not receive any correspondence within 30 days we will assume that your office is in concurrence with APE definition and delegation of Section 106 coordination. FTA will continue to consult with the SHPO regarding the assessment of adverse effects and resolution of adverse effects pursuant to 36 CFR Part 800. We look forward to the Section 106 process for the Project.

If you have any questions, please call Mr. David Biondolillo, City of Santa Ana Project Manager, at (714) 647-5603, or Mr. Hymie Luden, City and Regional Planner, at (415) 744-2732.

Sincerely,

  
For Leslie T. Rogers  
Regional Administrator

Copy to (by email)  
Ms. Jennifer Bergener, OCTA  
Mr. David Biondolillo, City of Sana Ana

## Santa Ana-Garden Grove Fixed Guideway Project Project Description

The four alternatives selected for evaluation and detailed environmental review for the Santa Ana and Garden Grove Fixed Guideway Project (Project) consist of a No Build Alternative, a Transportation System Management (TSM) Alternative and two streetcar Build Alternatives. The following provides a brief description of each alternative:

- No Build Alternative

The No Build Alternative includes existing conditions as well as conditions that would be reasonably expected to occur in the foreseeable future (*i.e.*, through planning horizon 2035) *without* implementation of the proposed Project. Only those project that (1) have environmental analysis approved by an implementing agency and (2) have a funding source identified for implementation are included in the No Build Alternative.

With respect to transit, the No Build Alternative includes modest improvements/adjustments to existing local bus routes, expanded Metrolink service, and three new bus rapid transit (BRT) routes that will travel through the Project study area. The roadway improvements included in the No Build Alternative are limited to the Bristol Street Widening project, which will widen Bristol Street from four to six lanes between Warner Avenue and Memory Lane, and the Grand Avenue Widening project, which will widen Grand Avenue from four to six lanes from First Street to Fourth Street.

- TSM Alternative

The TSM Alternative represents the best that can be done for mobility without construction of major new transportation facilities or physical capacity improvements. The TSM Alternative emphasizes low cost (*i.e.*, small physical improvements) and operational efficiencies such as modifications and enhancements to selected bus routes in the study area; traffic signal timing improvements at select congested locations along Santa Ana Boulevard and Civic Center Drive to provide preferential treatments for enhanced east-west bus flow; real-time bus schedule information at high-volume transit stops (*e.g.*, Flower Street and 6th Street area, Santa Ana Boulevard and Main Street); improvements to transit stop amenities (benches, shelters, kiosks, sidewalk connections, etc.) along Santa Ana Boulevard and Main Street corridors; and improvements to bicycle and pedestrian circulation to promote safe, convenient and attractive connectivity between transit system and surrounding neighborhoods and activity centers.

- Streetcar Alternatives 1 and 2

For both Streetcar Alternative 1 and Streetcar Alternative 2, a portion of the alignment is located within the Pacific Electric Right-of-Way (PE ROW), between Harbor Boulevard and Raitt Street. Historically, the Pacific Electric (PE) rail line provided direct transit service to Orange County's Civic Center and to Santa Ana's downtown area along Fourth Street as part of a regional red car system that connected central Orange County with Los Angeles County. While the 100-foot-wide PE ROW is currently comprised of vacant land owned by OCTA, much of its original configuration still remains.



## **Santa Ana-Garden Grove Fixed Guideway Project Project Description**

Within the PE ROW, the streetcar would operate at-grade, in a dedicated lane on ballasted track, within the centermost portion of the alignment. The streetcar alignment would transition into mixed-flow operation at Raitt Street.

Outside of the PE ROW, both Streetcar Alternative 1 and Streetcar Alternative 2 would operate in existing travel lanes, at-grade, with other traffic – similar to a bus. The streetcars would travel in the same direction as existing traffic flows, and would adhere to city traffic signals. Tracks would be placed in the outside “through” lanes so transit riders can easily access the streetcars from the platforms located on city sidewalks at the station stops.

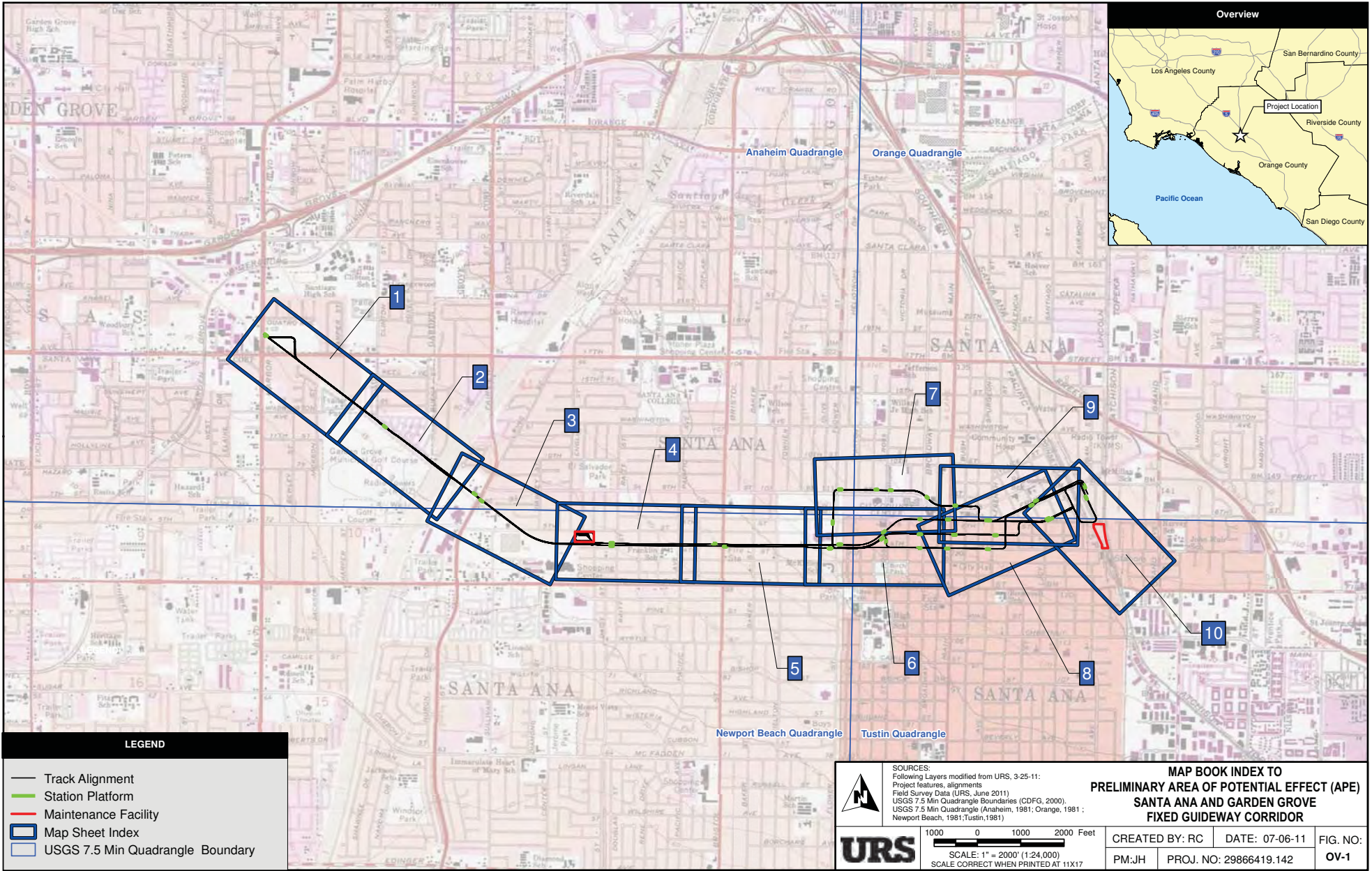
While the precise alignments are different for Streetcar Alternative 1 and Streetcar Alternative 2, the general concept of a one-way couplet is the same. The streetcar utilizes a pair (i.e., couplet) of city streets to travel eastbound and westbound. Different streets are utilized: one for the eastbound direction and another for the westbound direction.


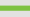

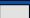
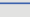
Streetcar Alternative 1 utilizes Fourth Street (eastbound direction) and Santa Ana Boulevard (westbound) direction to form a couplet through downtown Santa Ana.

Streetcar Alternative 2 mainly utilizes Santa Ana Boulevard/Fifth Street (eastbound direction) and Civic Center Drive (westbound direction) to form a couplet through downtown Santa Ana.


Station stops are provided at short intervals (less than a half-mile) along the streetcar alignment for both Streetcar Alternatives 1 and 2. Station spacing is more frequent through downtown Santa Ana – less than a quarter-mile between station stops. Each station includes bicycle and pedestrian amenities, as well as a shelter structure. The shelter structures will be fully transparent from all angles and will include non-intrusive lighting to enhance security. Low-level platforms will allow for level loading and use of bridge plates. The pedestrian facilities, amenities, and platform areas within the proposed station areas will be ADA-compliant and accessible.

Path: C:\wip\proj\11573\3086641\Drawings\Map\_Books\Area\_Analysis\Reference\Area\_Analysis\_Overview.dwg, 7/8/2011, 8:38:55 AM



LEGEND	
	Track Alignment
	Station Platform
	Maintenance Facility
	Map Sheet Index
	USGS 7.5 Min Quadrangle Boundary

**SOURCES:**  
 Following Layers modified from URS, 3-25-11:  
 Project features, alignments  
 Field Survey Data (URS, June 2011)  
 USGS 7.5 Min Quadrangle Boundaries (CDFG, 2000),  
 USGS 7.5 Min Quadrangle (Anaheim, 1981; Orange, 1981 ;  
 Newport Beach, 1981; Tustin, 1981)

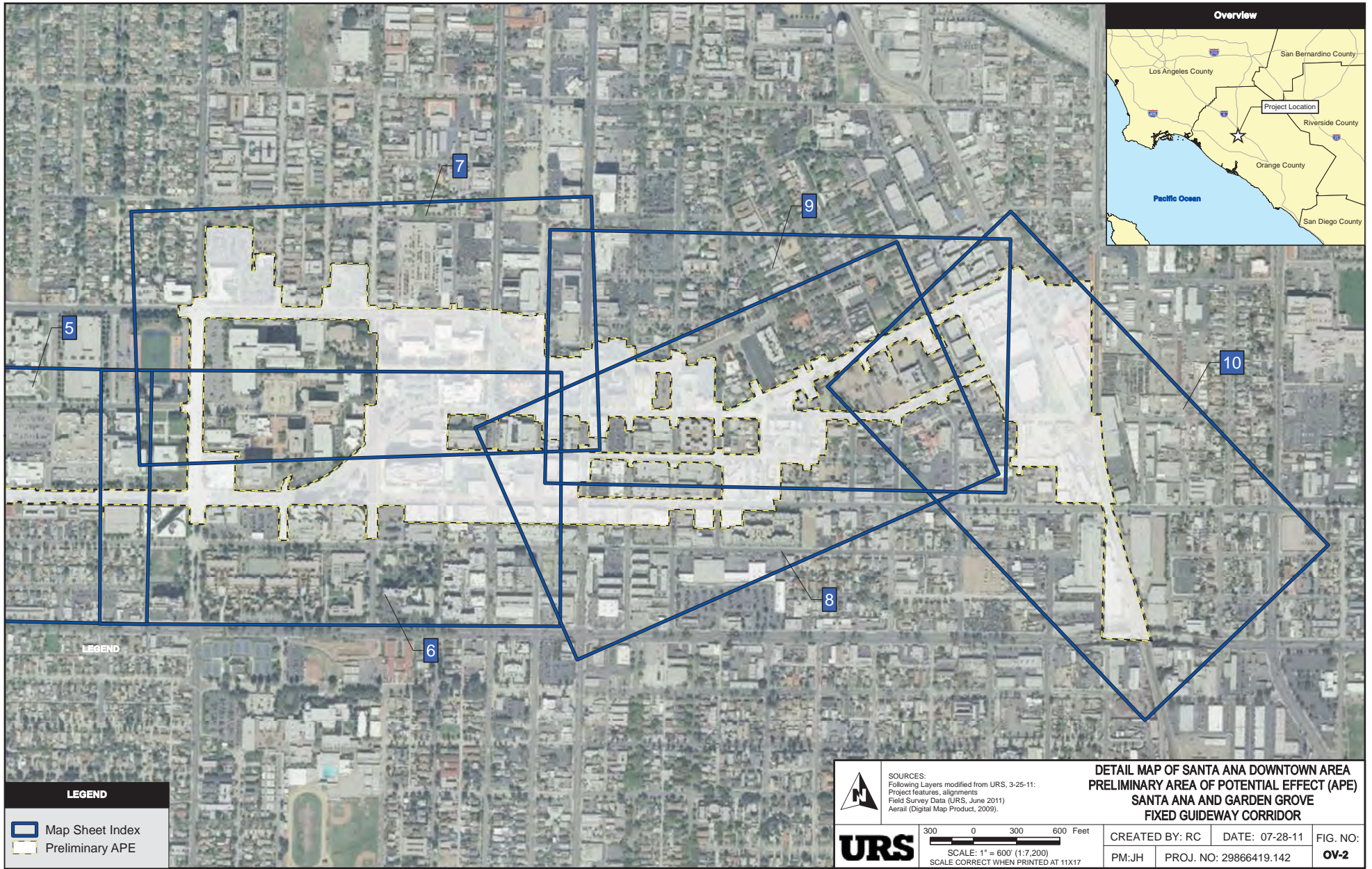


**URS**

1000 0 1000 2000 Feet  
 SCALE: 1" = 2000' (1:24,000)  
 SCALE CORRECT WHEN PRINTED AT 11X17

MAP BOOK INDEX TO PRELIMINARY AREA OF POTENTIAL EFFECT (APE) SANTA ANA AND GARDEN GROVE FIXED GUIDEWAY CORRIDOR			
CREATED BY: RC	DATE: 07-06-11	FIG. NO:	OV-1
PM:JH	PROJ. NO: 29866419.142		

Path: C:\g:\projects\1573\29866419\map\_data\map\_data\_analysis\Info\map\_data\_analysis\_2.mxd\map\_data\_analysis\_2.mxd\_11-10-09-2-AM



**Overview**



**LEGEND**

**LEGEND**

- Map Sheet Index
- Preliminary APE



**SOURCES:**  
 Following Layers modified from URS, 3-25-11:  
 Project features, alignments  
 Field Survey Data (URS, June 2011)  
 Aerial (Digital Map Product, 2009).



300 0 300 600 Feet  
 SCALE: 1" = 600' (1:7,200)  
 SCALE CORRECT WHEN PRINTED AT 11X17

**DETAIL MAP OF SANTA ANA DOWNTOWN AREA  
 PRELIMINARY AREA OF POTENTIAL EFFECT (APE)  
 SANTA ANA AND GARDEN GROVE  
 FIXED GUIDEWAY CORRIDOR**

CREATED BY: RC	DATE: 07-28-11	FIG. NO:
PM:JH	PROJ. NO: 29866419.142	<b>OV-2</b>

# Map Reference Numbers

<b>1</b>	12022 Quatro (176912)	<b>21</b>	222 W 4th (C-NR 84000438, SARHP 182)	<b>41</b>	104 and 106 E 4th (C-NR 84000438, SARHP 238)	<b>61</b>	115 E Santa Ana (C-NR 84000438)
<b>2</b>	1424 N Susan	<b>22</b>	220 W 4th (NC-NR 84000438)	<b>42</b>	108, 110, and 112 E 4th (C-NR 84000438, SARHP 246)	<b>62</b>	615 N Bush (C-NR 84000438)
<b>3</b>	Old Pacific Electric Santa Ana River Bridge (161847)	<b>23</b>	214, 216, and 218 W 4th (C-NR 84000438, SARHP 152)	<b>43</b>	114 E 4th (C-NR 84000438, CN-NR 84000438)	<b>63</b>	614 N Bush (C-NR 84000438, CHPI P915, SARHP 251)
<b>4</b>	2415 W 5th (177031)	<b>24</b>	202, 204, 206, 208, 210, and 212 W 4th (C-NR 84000438, SARHP 20; NRIS 79000516; CPHI 487)	<b>44</b>	116 E 4th (C-NR 84000438, SARHP 239)	<b>64</b>	624 French
<b>5</b>	2216 W 5th (177028)	<b>25</b>	301-309 W 4th (C-NR 84000438, SARHP 11)	<b>45</b>	118 E 4th (C-NR 84000438, SARHP 247)	<b>65</b>	607 E Santa Ana (179882)
<b>6</b>	2110 W 5th (177029)	<b>26</b>	221 and 223 W 4th (C-NR 84000438, NC-NR 84000438, SARHP 153)	<b>46</b>	120 E 4th (C-NR 84000438)	<b>66</b>	611 E Santa Ana (161037)
<b>7</b>	2106 W 5th (177030)	<b>27</b>	219 W 4th (NC-NR 84000438, SARHP 144)	<b>47</b>	202, 204, 206, 208, and 210 E 4th (C-NR 84000438, SARHP 256)	<b>67</b>	621 N Spurgeon (SARHP 26)
<b>8</b>	2016-2020 W 5th (177032)	<b>28</b>	213, 215, and 217 W 4th (C-NR 84000438, SARHP 160)	<b>48</b>	312, 314, and 316 E 4th (NC-NR 84000438, SARHP 254)	<b>68</b>	Portion of Burlington Northern Santa Fe Railway (176693)
<b>9</b>	1804 W 5th (177033)	<b>29</b>	209 and 211 W 4th (C-NR 84000438, SARHP 198)	<b>49</b>	318 and 320 E 4th (SARHP 255)	<b>SAFG-PEROW-1</b>	Portion of Pacific Electric Streetscar Right-of-way
<b>10</b>	1802 W 4th (177034)	<b>30</b>	407, 409, and 411 N Broadway (C-NR 84000438, SARHP 175)	<b>50</b>	400 and 412 E 4th (SARHP 30)		
<b>11</b>	1302 W Santa Ana (176992)	<b>31</b>	203 and 205 W Civic Center (NRIS 93000237, SARHP 6)	<b>51</b>	117 W 4th (C-NR 84000438, SARHP 192)		
<b>12</b>	414 W 4th (C-NR 84000438, SARHP 189)	<b>32</b>	211 W Santa Ana (C-NR 84000438, NRIS 77000321, CHL 837, SARHP 1)	<b>52</b>	115 W 4th (NC-NR 84000438)		
<b>13</b>	412 W 4th (C-NR 84000438, SARHP 190)	<b>33</b>	120 E Civic Center (C-NR 84000438, NRIS# 77000320, CHPI P341, SARHP 2)	<b>53</b>	113 W 4th (C-NR 84000438, SARHP 236)		
<b>14</b>	408 W 4th (NC-NR 84000438, SARHP 140)	<b>34</b>	600 N Main	<b>54</b>	109 W 4th (NC-NR 84000438)		
<b>15</b>	404 and 406 W 4th (C-NR 84000438, SARHP 174)	<b>35</b>	618-624 Main (C-NR 84000438)	<b>55</b>	101 W 4th (C-NR 84000438, SARHP 187)		
<b>16</b>	400 and 402 W 4th (C-NR 84000438, SARHP 179)	<b>36</b>	120 W 4th (NC-NR 84000438)	<b>56</b>	118 and 120 W 5th (C-NR 84000438, SARHP 191)		
<b>17</b>	324 A and B W 4th (C-NR 84000438, SARHP 218)	<b>37</b>	116 W 4th (C-NR 84000438, NC-NR 84000438, SARHP 186)	<b>57</b>	501 E 5th (SARHP 29)		
<b>18</b>	312, 314, and 316 W 4th (C-NR 84000438, SARHP 243)	<b>38</b>	108, 110, 112, and 114 W 4th (C-NR 84000438, SARHP 197, SARHP 155, SARHP 164)	<b>58</b>	507 N Winter St.		
<b>19</b>	310 W 4th (C-NR 84000438, SARHP 237)	<b>39</b>	102 and 106 W 4th (C-NR 84000438, SARHP 234)	<b>59</b>	515 Main (C-NR 84000438, SARHP 178)		
<b>20</b>	302, 304, 306, and 308 W 4th (NC-NR 84000438, SARHP 244)	<b>40</b>	102 E 4th (C-NR 84000438, SARHP 245)	<b>60</b>	517 and 519 N Main (C-NR 84000438, SARHP 166)		

PRELIMINARY AREA OF POTENTIAL EFFECT (APE)  
SANTA ANA AND GARDEN GROVE FIXED GUIDEWAY CORRIDOR  
MAP REFERENCE NUMBER LEGEND

**URS**

CREATED BY: RC  
PM: JH PROJ. NO.: 29866419.142

DATE: 07-27-11

FIG. NO:  
L-1

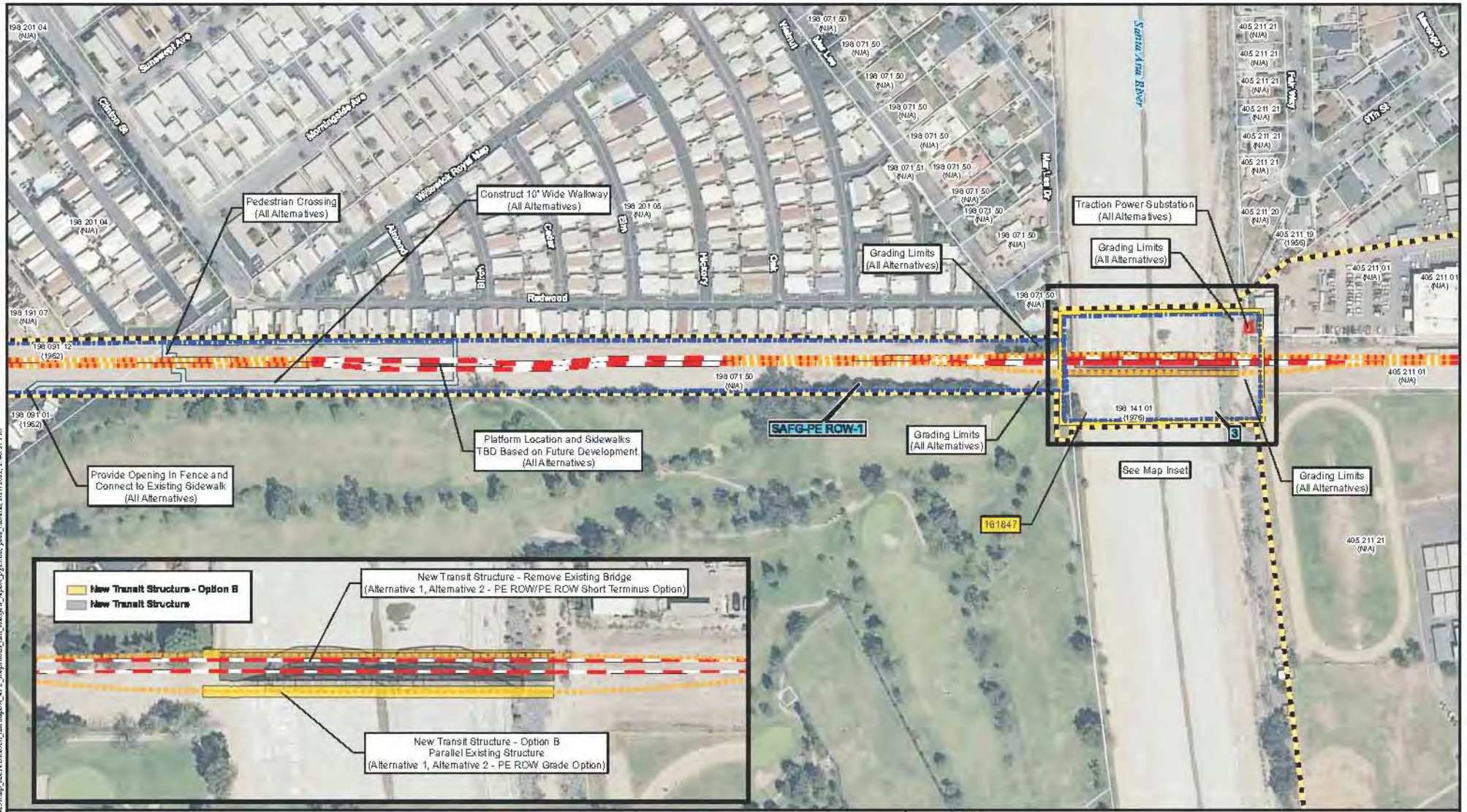
C = Contributor  
NC = Non-contributor



<b>Trackage Alignment Section</b> Alternative 1, 2 - PE ROW Alternative 1, 2 - PR ROW - Grade Option Alternative 1, 2 - PE ROW - Short Terminus Option Alternative 1, 2 - Rail to Flower		<b>Project Features</b> Walkway Staging Area Substation Maintenance Facility		Parking Structure Platform Bridge Map Reference Number 014 250 98 - Assessor Parcel Number (1923) - Construction Date Preliminary APE Previously Recorded Cultural Resource		<b>SOURCES:</b> Planning Layers modified from URS, 5-25-11 Field Survey Data, Map Reference # 8 (R/S, June 20 11) Project Reference Information (see notes) Preliminary Proposed Design Streets (SRN), 20 11 Aerial Digital Map Product, 20 09 Preliminary Recorded Cultural Resources (SDCG, 20 11) Assessor Parcel Number & Construction Date City of Santa Ana Planning Department, 20 11		<b>PRELIMINARY AREA OF POTENTIAL EFFECT (APE)</b> <b>SANTA ANA AND GARDEN GROVE FIXED GUIDEWAY CORRIDOR</b>	
<b>URS</b>		100 0 100 200 Feet SCALE: 1" = 200' (1:2,400) SCALE CORRECT WHEN PRINTED AT 11X17		CREATED BY: RC DATE: 1/17/2012 PM: JH PROJ. NO: 29866419.142		FIG. NO: <b>1</b>			

**Note:** All APNs are based on information provided by the City of Santa Ana Planning Department, which may not match the APN information on file at the County of Orange.

Path: C:\p\proj\2011\29866419\Map\_SantaAna\Map\_SantaAna.aprx [2012/01/17 11:28:09 AM]



**Trunk Alignments**

- Alternative 1, 2 - PE ROW
- Alternative 1, 2 - PR ROW - Grade Option
- Alternative 1, 2 - PE ROW - Short Terminus Option
- Alternative 1, 2 - Rail to Flower
- Alternative 1 - East of Flower
- Alternative 2 - East of Flower

**Project Features**

- Walkway
- Tree Removal
- Maintenance Facility
- Parking Structure
- Staging Area
- Substation
- Platform
- Bridge
- Map Reference Numbers
- Preliminary APE
- Previously Recorded Cultural Resource

014 260 98 Assessor Parcel Number (1923) Construction Date

**UR S**

100 0 100 200 Feet

SCALE: 1" = 200' (1:2,400)

SCALE CORRECT WHEN PRINTED AT 11x17

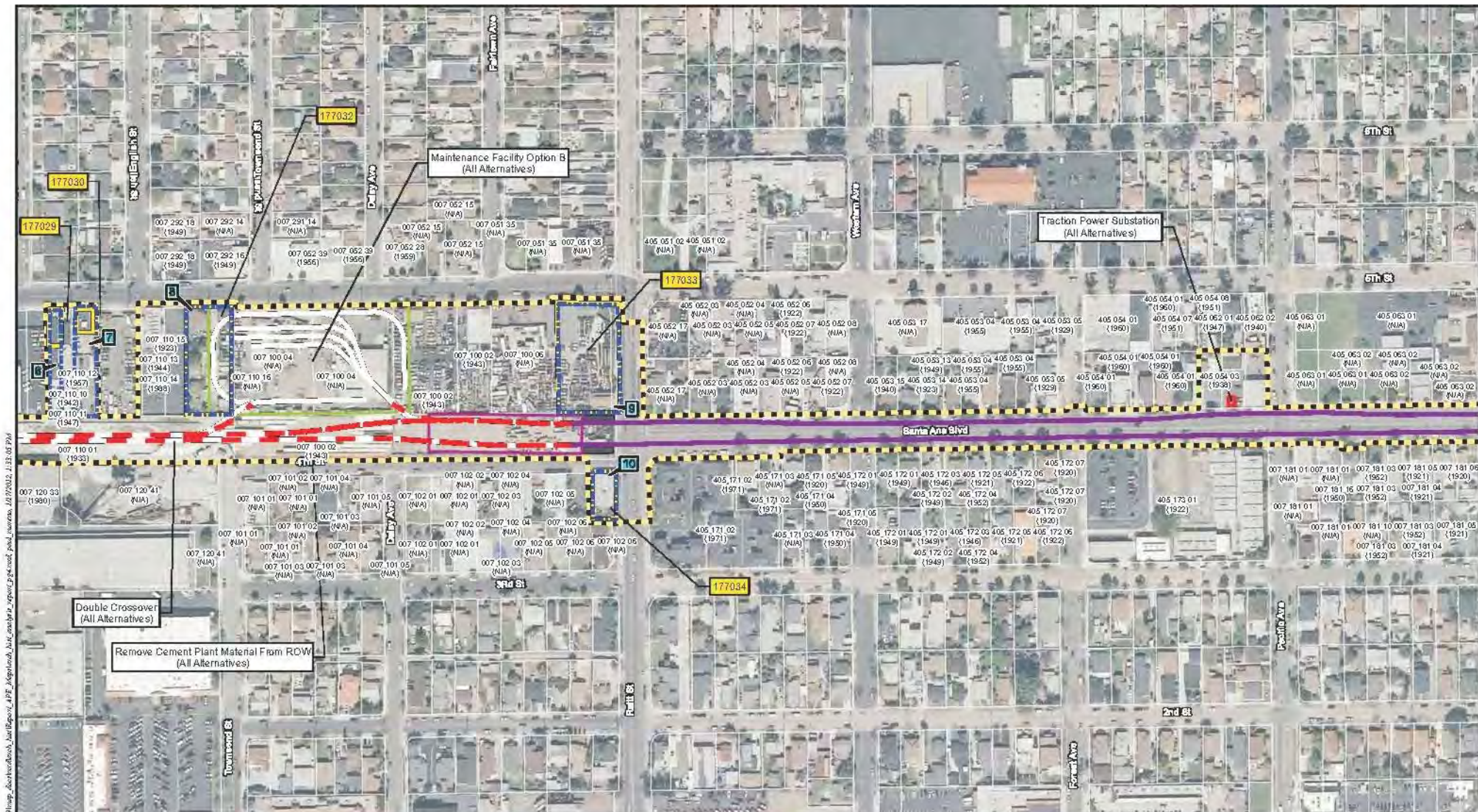
**SOURCE:**  
 Existing Layer modified from URS, 3-25-11  
 Field Survey Data (PRC, June 2011)  
 Project Reference Alignment; site nearest  
 Previously Recorded Cultural Resource (SRP, 2011)  
 Aerial Digital Map Product (2002)  
 Pre-viously Recorded Cultural Resource (SODG, 2011)  
 Assessor Parcel Number & Construction Date  
 City of Santa Ana Planning Department (2011)

**PRELIMINARY AREA OF POTENTIAL EFFECT (APE)  
 SANTA ANA AND GARDEN GROVE FIXED GUIDEWAY CORRIDOR**

CREATED BY: RC	DATE: 1/17/2012	FIG. NO:
PM: JH	PROJ. NO: 29866419.142	<b>2</b>

**Note:** All APNs are based on information provided by the City of Santa Ana Planning Department, which may not match the APN information on file at the County of Orange.



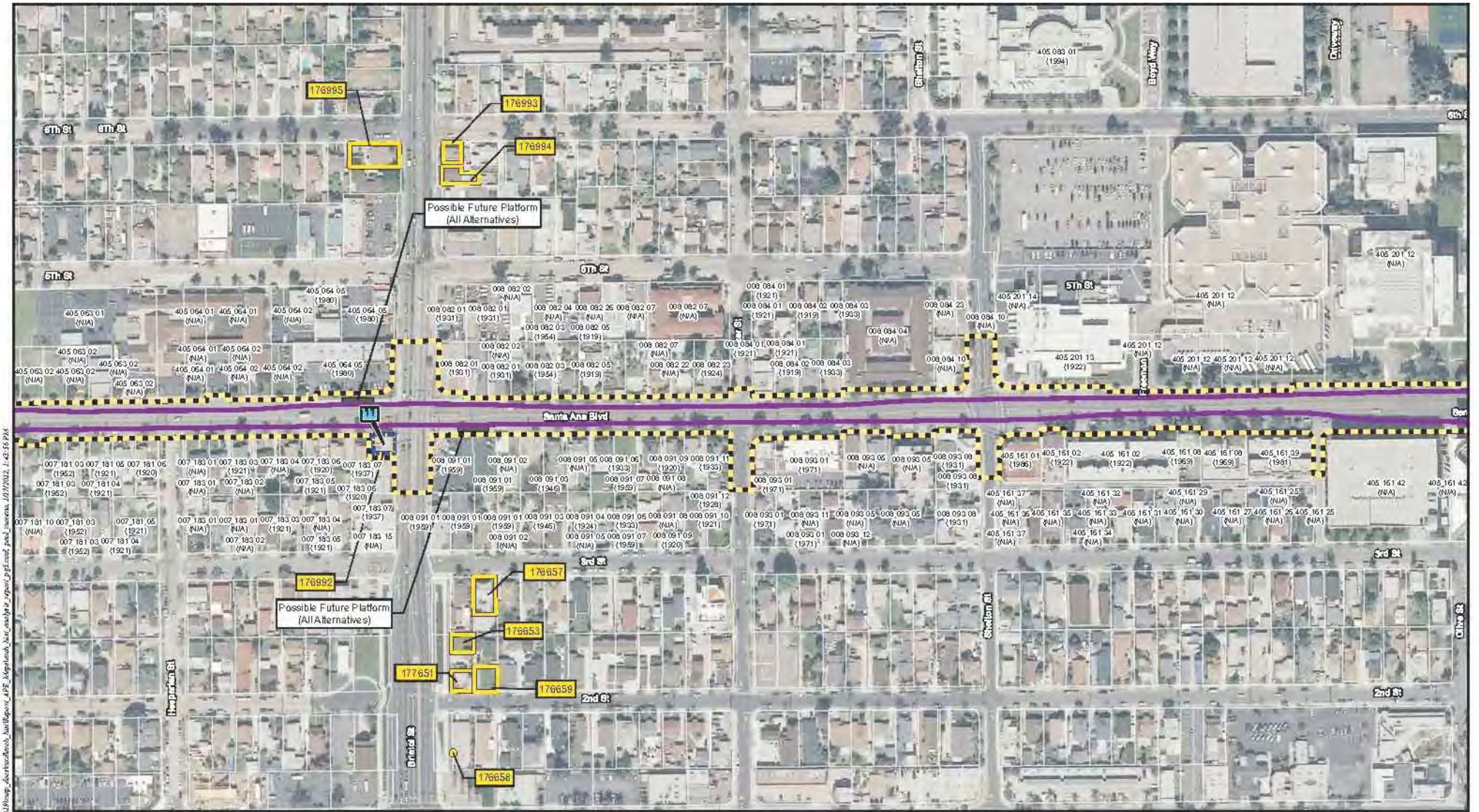


Path: C:\p1\Browner\177029\Map\_2\work\work\Map\_Report\_APE\_Appl\Map\_2\Map\_Report\_APE\_Appl.aprx;proj=na;map=na;apn=177029;2.23.05 PWA

<b>Track Alignment Section</b> Alternative 1, 2 PE ROW Alternative 1, 2 PR ROW Grade Option Alternative 1, 2 PE ROW - Short Terminus Option Alternative 1, 2 Rail-to-Flower		<b>Project Features</b> Walkway Tree Removal Maintenance Facility		<b>Other Features</b> Parking Structure Staging Area Substation Platform Bridge Map Reference Numbers		014 250 98 Assessor/Parcel Number (1523) Construction Date Preliminary APE Previously Recorded Cultural Resource		<b>SOURCES:</b> Following Layers modified from URS S-45-11 Field Survey Data (PWA, June 2011) Photo of Easements, Surveying, and Other Pre-Construction Data Santa Ana, 2011 Aerial (Digital Map Products, 2009) Pre-Existing Recorded Cultural Resource (CR) Data Assessor/Parcel Number & Construction Date (City of Santa Ana Planning Department, 2011)	<b>PRELIMINARY AREA OF POTENTIAL EFFECT (APE)          SANTA ANA AND GARDEN GROVE FIXED GUIDEWAY CORRIDOR</b>		CREATED BY: RC PM: JH	DATE: 1/17/2012 PROJ. NO.: 29866419.142	FIG. NO: 4
<b>URS</b> SCALE: 1" = 200' (1:2400) SCALE CORRECT WHEN PRINTED AT 11x17"							100 0 100 200 Feet						

**Note:** All APNs are based on information provided by the City of Santa Ana Planning Department, which may not match the APN information on file at the County of Orange.

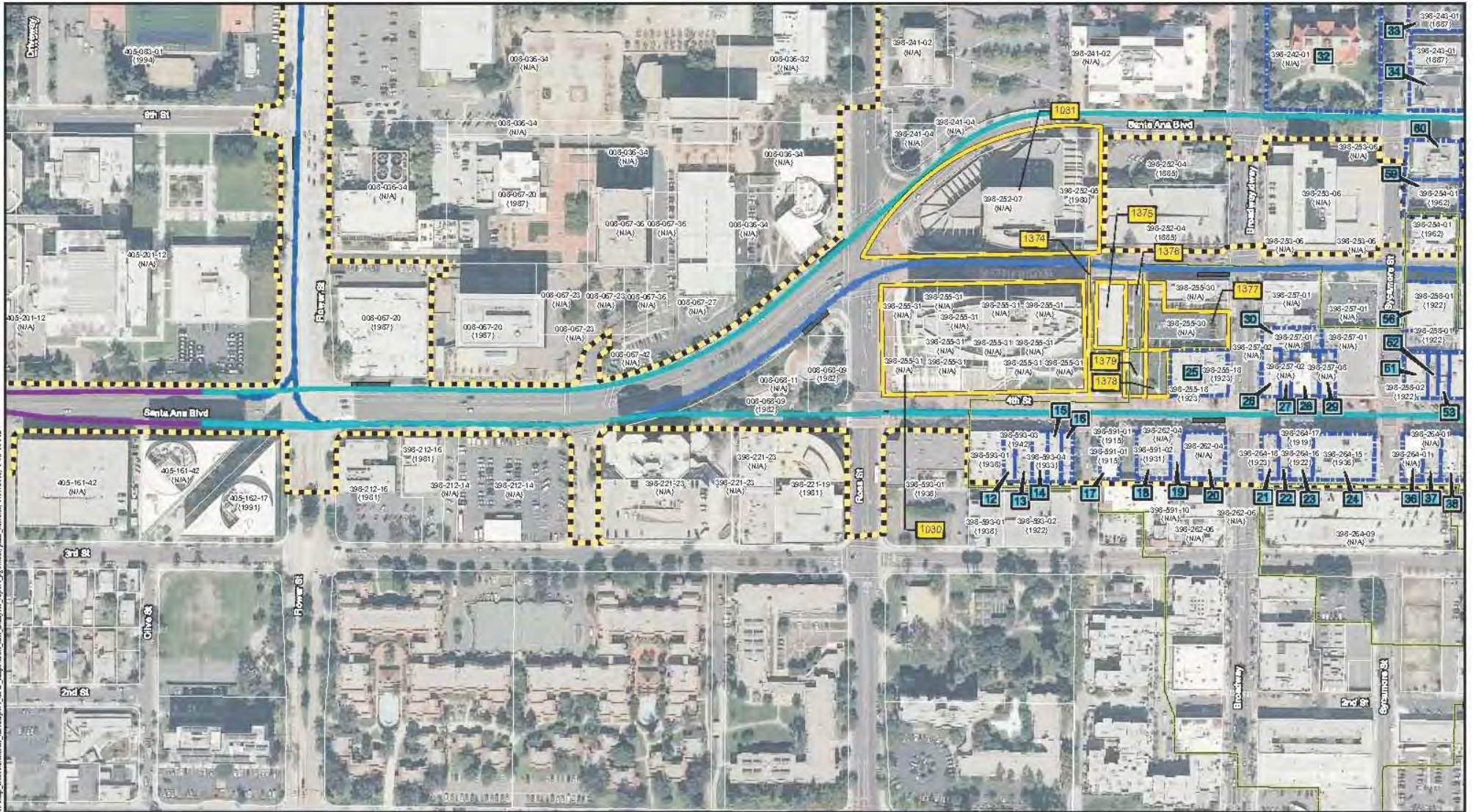




File: G:\Bids\Bids\2177266666\Map\_SantaAna\_GardenGroove\_FixedGuideway\_APE\_20120121\_11:42:36.dwg  
 Plot: G:\Bids\Bids\2177266666\Map\_SantaAna\_GardenGroove\_FixedGuideway\_APE\_20120121\_11:42:36.dwg

<b>Track Alignments Section</b> Alternative 1, 2 P.E.R.O.W. Alternative 1, 2 P.R.R.O.W. Grade Option Alternative 1, 2 P.E.R.O.W. Short Terminus Option Alternative 1, 2 Rail-to-Road		<b>Project Features</b> Walkway Tree Removal Maintenance Facility		Parking Structure Staging Area Substation		Platform Bridge Map Reference Numbers		014 250 98 Assessor Parcel Number (1923) Construction Date Preliminary APE Previously Recorded Cultural Resource			<b>SOURCES:</b> Planning Department Staff (URS, 2/25/11) Field Survey Data, Map Reference #2 APRS, June 2011 Project Database, Geographic Data (various) Aerial Imagery (2011) Aerial Digital Map Product, 2010 Previously Recorded Cultural Resource # (2010, 2011) Assessor/Parcel Number & Construction Date City of Santa Ana Planning Department (2011)	<b>PRELIMINARY AREA OF POTENTIAL EFFECT (APE)          SANTA ANA AND GARDEN GROVE FIXED GUIDEWAY CORRIDOR</b>	
<b>Legend</b> Alternative 1 East of Flower Alternative 2 East of Flower												CREATED BY: RC PM: JH	DATE: 1/17/2012 PROJ. NO: 29866419.142

**Note:** All APNs are based on information provided by the City of Santa Ana Planning Department, which may not match the APN information on file at the County of Orange.



**Track Alignment Section**

- Alternative 1, 2 - PE ROW
- Alternative 1, 2 - PE ROW - Grade Option
- Alternative 1, 2 - PE ROW - Short Terminus Option
- Alternative 1, 2 - Rail to Flower

**Alternative 1 East of Flower**

**Alternative 2 - East of Flower**

**Project Features**

- Walkway
- Tree Removal
- Maintenance Facility
- Parking Structure
- Staging Area
- Substation
- Platform
- Bridge
- National Register Historic District
- Downtown Santa Ana NTHS# 04000438
- Map Reference Numbers

**014-250-98 Assessor Parcel Number (1923) Construction Date**

- Preliminary APE
- Previously Recorded Cultural Resources

**SOURCES**

Following Layers modified from URS, 5-26-11:  
 Full Survey Data, Map Reference #3 URS, June 2011  
 Project location, approximately, tree removal  
 Streets (SPN, 20 11)  
 Previously Recorded Cultural Resources (2009)  
 Previously Recorded Cultural Resources (2010, 2011)  
 Assessor Parcel Number & Construction Date  
 (City of Santa Ana Planning Department 2011)

**PRELIMINARY AREA OF POTENTIAL EFFECT (APE)  
 SANTA ANA AND GARDEN GROVE FIXED GUIDEWAY CORRIDOR**

100 0 100 200 Feet

SCALE: 1" = 200' (1:2400)

SCALE CORRECT WHEN PRINTED AT 11X17

CREATED BY: RC	DATE: 1/17/2012	FIG NO:
PM: JH	PRQJ. NO: 29886419.142	<b>6</b>

**Notes:** All APNs are based on information provided by the City of Santa Ana Planning Department, which may not match the APN information on file at the County of Orange.



Path: C:\gdp\project\15729\66619\map\_Ape\Ape\APE\_SantaAnaMap.aprx, 1/17/2012, 1:46:44 PM

<b>Track Alignment Section</b> - Alternative 1, 2 PE ROW - Alternative 1, 2 PR ROW Grade Option - Alternative 1, 2 PE ROW Short Terminus Option - Alternative 1, 2 Rail to Flower		<b>Project Features</b> - Walkway - Time Removal - Maintenance Facility		- Parking Structure - Staging Area - Substation - Map Reference Numbers		- Platform - Bridge - Downtown Santa Ana NRTSR 34000439		014 250 98 Assessor's Parcel Number (1923) Confusion Date - Preliminary APE - Previously Recorded Cultural Resource
---	--	--	--	--	--	---	--	---

**SOURCE:**  
 Following is a list modified from URS, 3-25-11:  
 Field Survey Data, Map Reference #1 (URS, June 2011)  
 Project Features, Aerials, etc. on hand  
 Previously Recorded Districts  
 Santa Ana (SR), 2011  
 Aerial Digital Map Product, 2009  
 Previously Recorded Cultural Resources (CGIC, 2011)  
 Assessor's Parcel Number & Confusion Date  
 City of Santa Ana Planning Department, 2011

**PRELIMINARY AREA OF POTENTIAL EFFECT (APE)  
 SANTA ANA AND GARDEN GROVE FIXED GUIDEWAY CORRIDOR**

SCALE: 1" = 200' (1:2,400)  
 SCALE CORRECT WHEN PRINTED AT 11X17

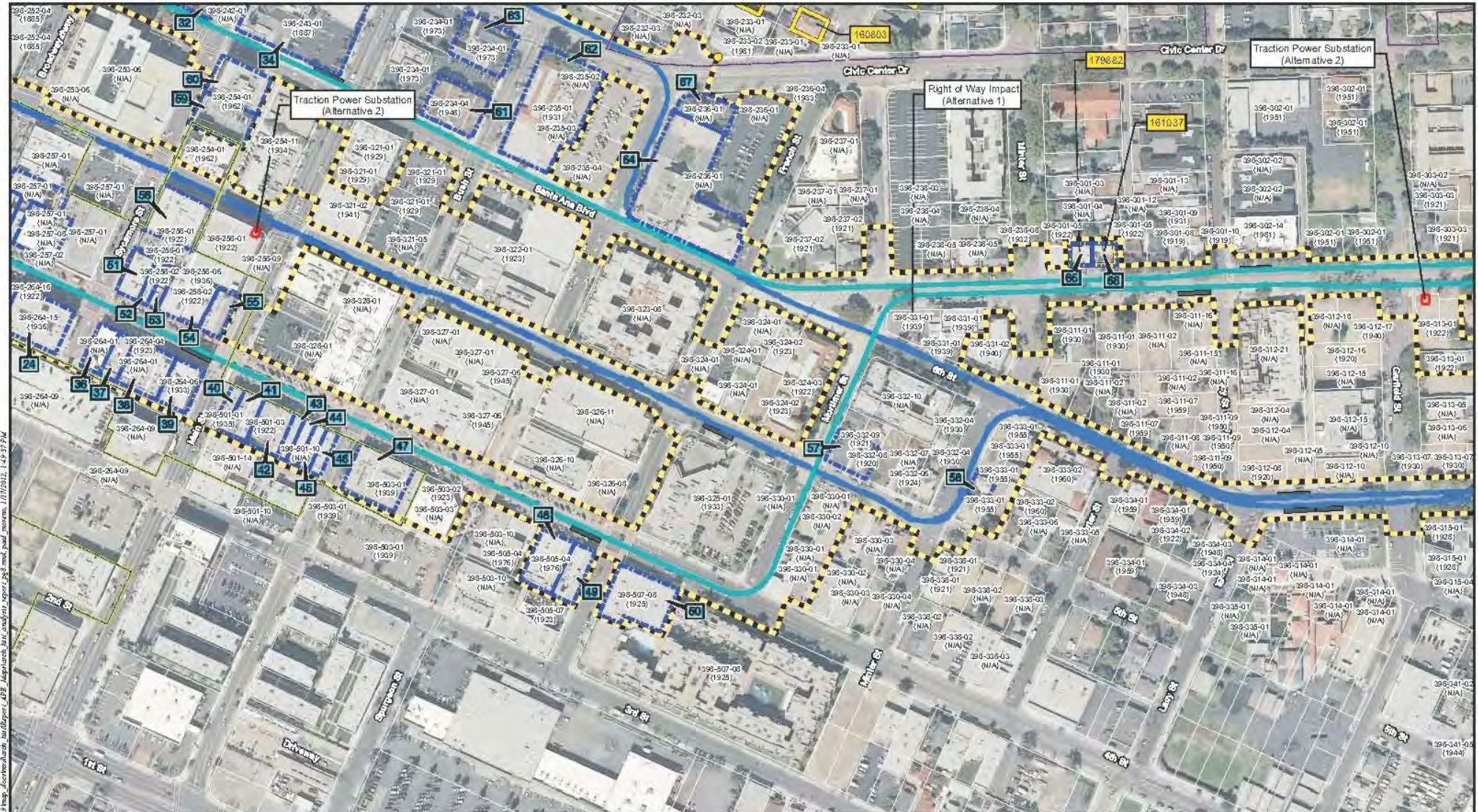
CREATED BY: RC  
 PM: JH

DATE: 1/17/2012  
 PRQJ. NO: 29866419.142

FIG. NO:  
**7**

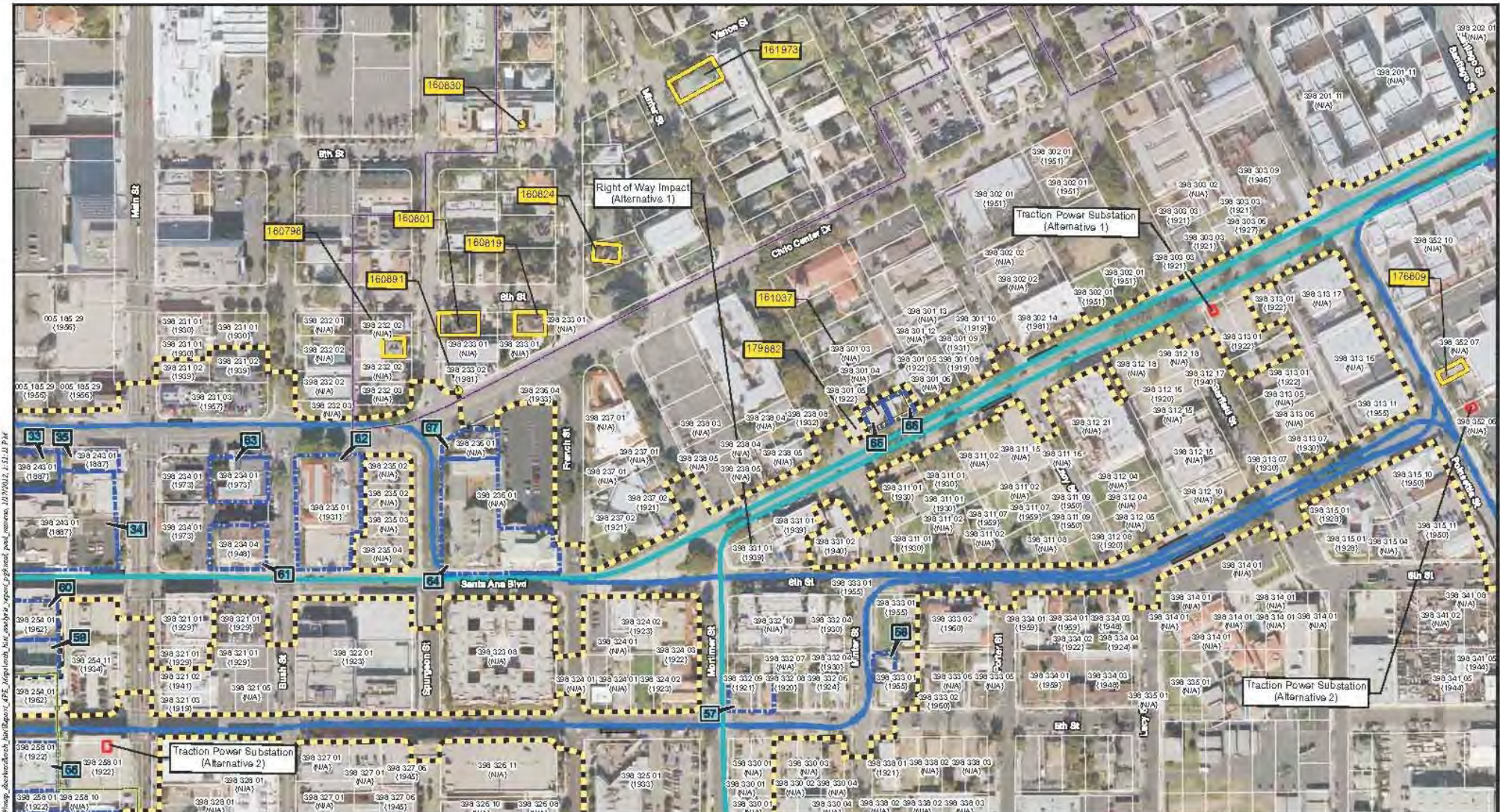
**Note:** All APNs are based on information provided by the City of Santa Ana Planning Department, which may not match the APN information on file at the County of Orange.

Path: C:\Bart\proj\GIS\29866419\map\_documents\area\_of\_potential\_effect\map\_documents\1/17/2012\_1.49-17.PAK  
 C:\Bart\proj\GIS\29866419\map\_documents\area\_of\_potential\_effect\map\_documents\1/17/2012\_1.49-17.PAK



<b>Track Alignment Location</b> Alternative 1, 2 PEROW Alternative 1, 2 P.R. ROW Grade Option Alternative 1, 2 PEROW Short Terminus Option Alternative 1, 2 Rail to Flower		<b>Project Features</b> Walkway Tree Removal Maintenance Facility		<b>Infrastructure</b> Parking Structure Staging Area Substation		<b>Historic Resources</b> National Register Historic District Downtown Santa Ana NRIS# 84000433 Historic French Park District NRIS# 99000551 Map Reference Numbers		<b>Other Resources</b> Platform Bridge 014 250 98 Assessor Parcel Number (1923) Construction Date Preliminary APE Previously Recorded Cultural Resource		<b>SOURCES</b> Following Layers modified from URS, 3-25-11: Field Survey Data, Map Reference by URS, June 2011 Photo Reference, Aerials, File name: 1 Previously Recorded Cultural Resources (SDCIC, 2011) Assessor Parcel Number & Construction Date (City of Santa Ana Planning Department 2011)		<b>PRELIMINARY AREA OF POTENTIAL EFFECT (APE)          SANTA ANA AND GARDEN GROVE FIXED GUIDEWAY CORRIDOR</b>	
<b>URIS</b>		100 0 100 200 Feet SCALE: 1" = 200' (1:2,400) SCALE CORRECT WHEN PRINTED AT 11X17		CREATED BY: RC DATE: 1/17/2012 FIG. NO: 8 PM: JH PRQJ. NO: 29866419.142									

**Note:** All APNs are based on information provided by the City of Santa Ana Planning Department, which may not match the APN information on file at the County of Orange.



Path: G:\proj\2012\179882\179882.dwg; AbsolutePath: \\santa-ana\proj\2012\179882\179882.dwg; AbsolutePath: \\santa-ana\proj\2012\179882\179882.dwg; AbsolutePath: \\santa-ana\proj\2012\179882\179882.dwg

<b>Track Alignments Section</b> Alternative 1, 2 - PE ROW Alternative 1, 2 - PR ROW-Grade Alternative 1, 2 - PE ROW - Short Terminus Alternative 1, 2 - Rail to Flower		<b>Project Features</b> Walkway Tree Removal Maintenance Facility		Parking Structure Staging Area Substation		Platform Bridge National Register Historic District Downtown Santa Ana NRIS# 84000438 Historic French Park District NRIS# 99000851 Map Reference Numbers		0 14-250-99 Assessor's Parcel Number {1923} Construction Date Preliminary APE Previously Recorded Cultural Resources	
--	--	--	--	---	--	---	--	---	--

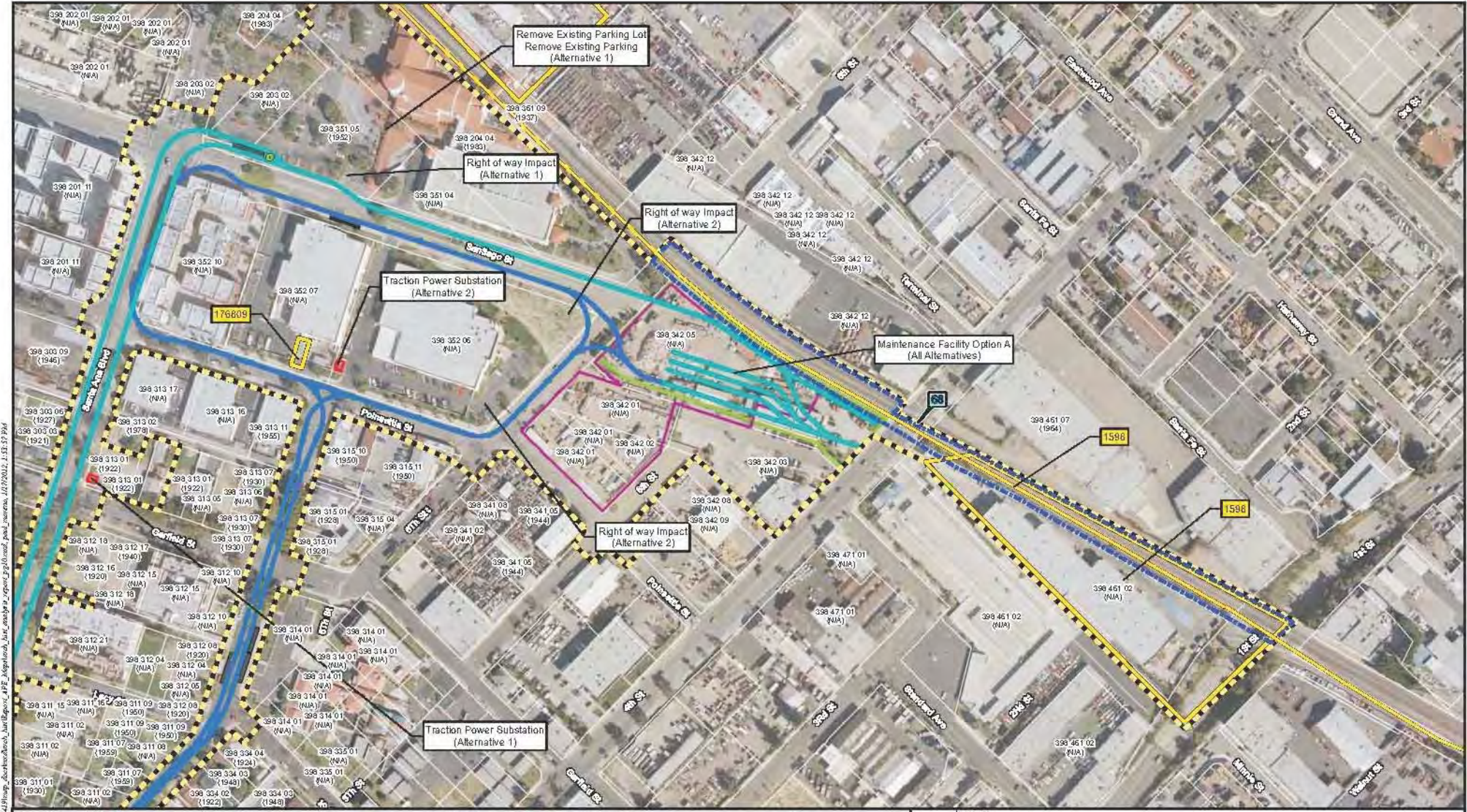
**PRELIMINARY AREA OF POTENTIAL EFFECT (APE)**  
**SANTA ANA AND GARDEN GROVE FIXED GUIDEWAY CORRIDOR**

SOURCES:  
 Software: ArcGIS 10.1  
 Data: Santa Ana GIS, Map Information System, June 2011  
 Project: Santa Ana Fixed Guideway, June 2011  
 Santa Ana GIS, June 2011  
 Santa Ana GIS, June 2011  
 Santa Ana GIS, June 2011  
 Santa Ana GIS, June 2011

URS  
 100 0 100 200 Feet  
 SCALE: 1" = 200' (1:2,400)  
 SCALE CORRECT WHEN PRINTED AT 11X17

CREATED BY: RC	DATE: 1/17/2012	FIG. NO:
PM: JH	PROJ. NO: 29866419.142	9

**Note:** All APNs are based on information provided by the City of Santa Ana Planning Department, which may not match the APN information on file at the County of Orange.



<b>Track Alignments Section</b> Alternative 1, 2 - PER OW Alternative 1, 2 - PR ROW Grade Alternative 1, 2 - PE ROW - Short Terminus Alternative 1, 2 - Rain to Flower	Alternative 1 - East of Flower Alternative 2 - East of Flower	<b>Project Features</b> Walkway Tree Removal Maintenance Facility	Parking Structure Staging Area Substation Platform Bridge Map Reference Numbers	014-250-98 Assessor Parcel Number (1923) Construction Date Preliminary APE Previously Recorded Cultural Resources
--	--	--	--	---

**SOURCES:**  
 Collected Layers modified from URS, 3-25-11  
 Field Survey Data, Map Reference # (URS, June 2011)  
 Photo/Coverage, Aerial/Ortho, File (ortho)  
 Previously Recorded Cultural Resources  
 Santa Ana, 2011  
 Aerial Digital Map Product, 2000  
 Previously Recorded Cultural Resources (9/10/10, 2015)  
 Assessor Parcel Number, Construction Date  
 City of Santa Ana Planning Department, 2015

**PRELIMINARY AREA OF POTENTIAL EFFECT (APE)**  
**SANTA ANA AND GARDEN GROVE FIXED GUIDEWAY CORRIDOR**

CREATED BY: RC DATE: 1/17/2012  
 PM: JH PROJ. NO: 29866419.142

**URS**

SCALE: 1" = 200' (1:2,400)  
 SCALE CORRECT WHEN PRINTED AT 11X17

FIG. NO: 10

**Note:** All APNs are based on information provided by the City of Santa Ana Planning Department, which may not match the APN information on file at the County of Orange.