

C CORDOBA CORPORATION
 2677 NORTH MAIN STREET, SUITE 240
 SANTA ANA, CA 92705
 714.558.6124 PH - 714.558.8467 FAX

OCTA **Santa Ana** **GARDEN GROVE**
 Education 1st

**SANTA ANA AND GARDEN GROVE
 FIXED GUIDEWAY CORRIDOR**
 STREETCAR MAINTENANCE FACILITY
 TYPICAL CROSS SECTION

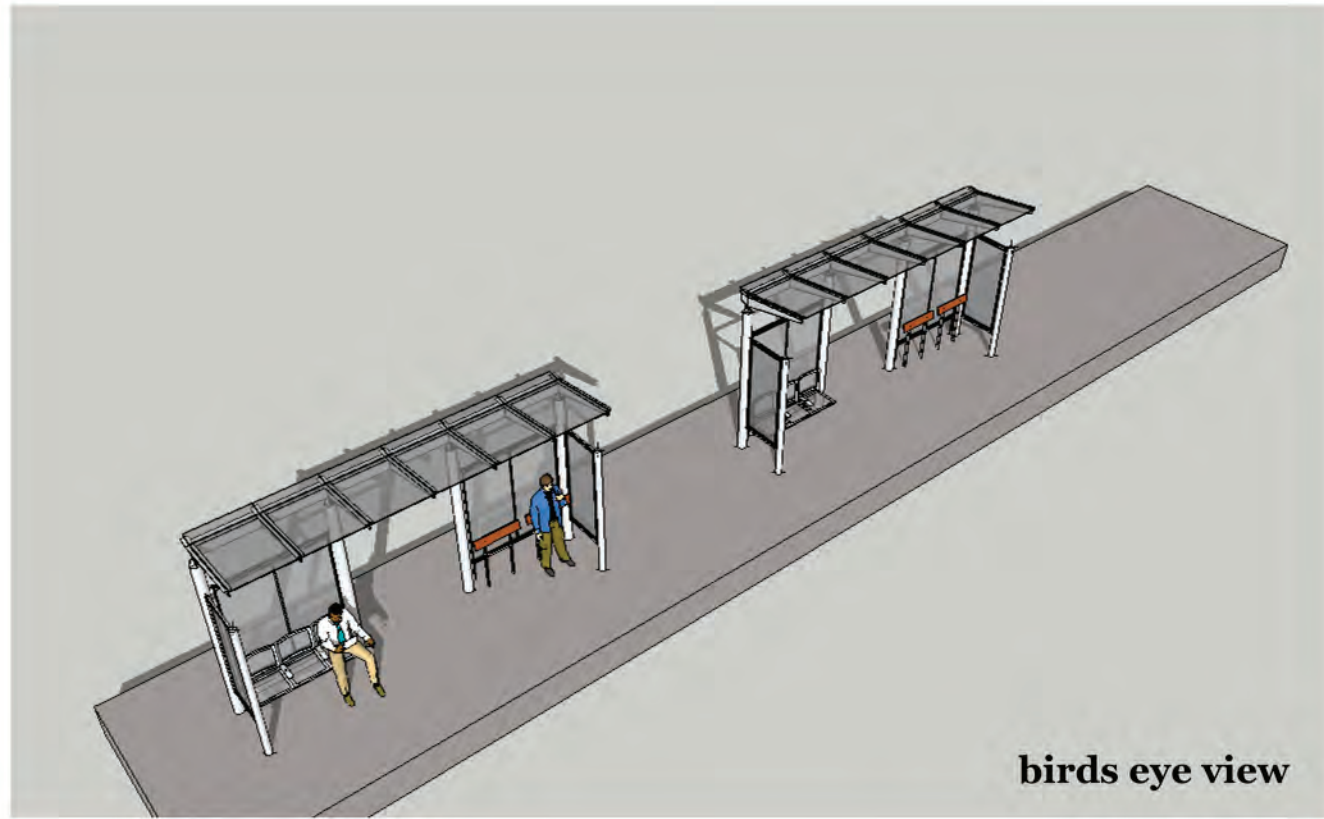
DRAWING NO.	MF - 04
SHEET NO.	
SCALE	NTS



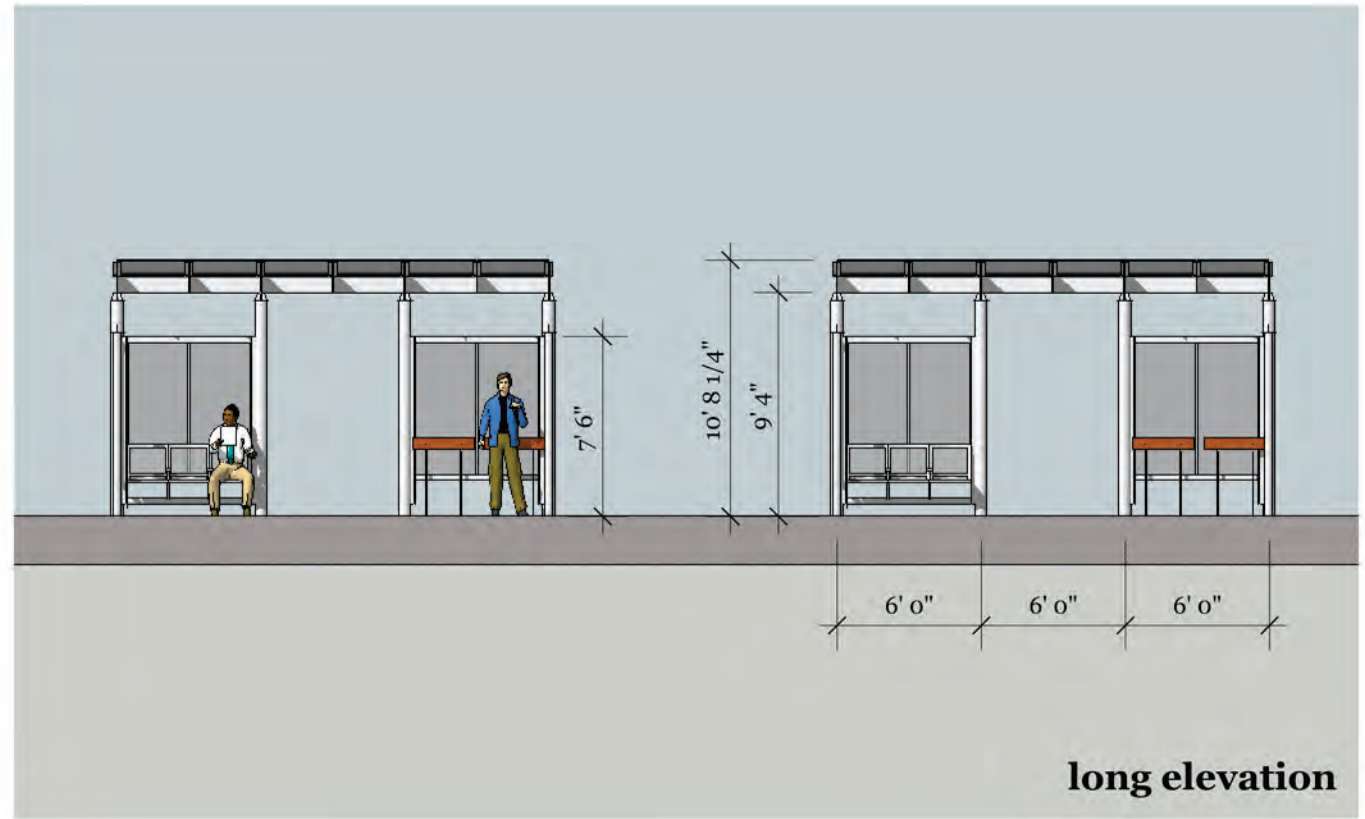
Santa Ana and Garden Grove Fixed Guideway Corridor

SECTION 4: URBAN DESIGN

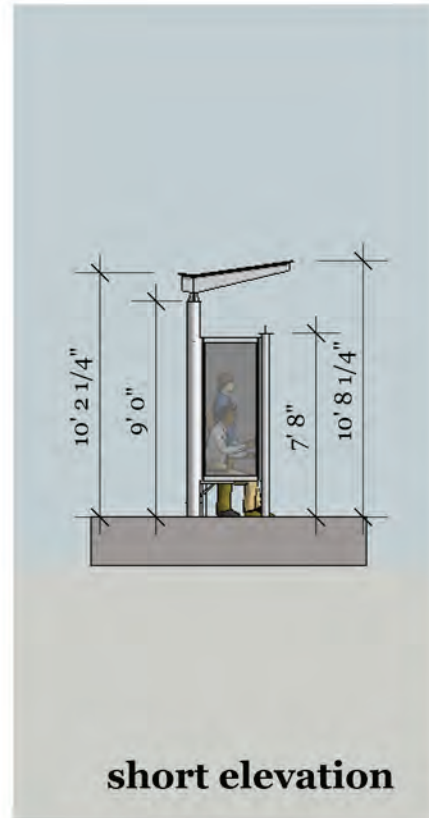




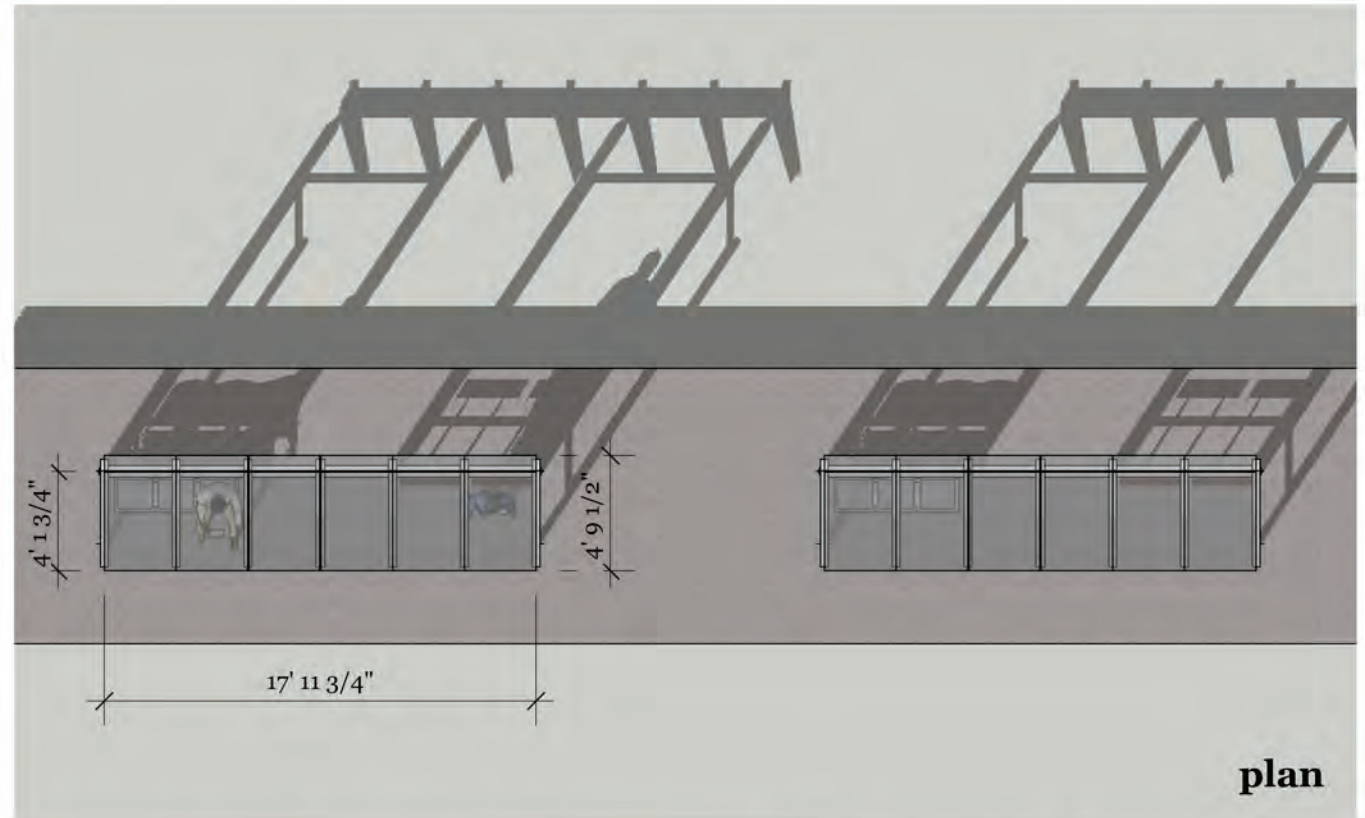
birds eye view



long elevation



short elevation



plan

C CORDOBA CORPORATION
 2677 NORTH MAIN STREET, SUITE 240
 SANTA ANA, CA 92705
 714.558.6224 PH - 714.558.8467 FAX

HNTB

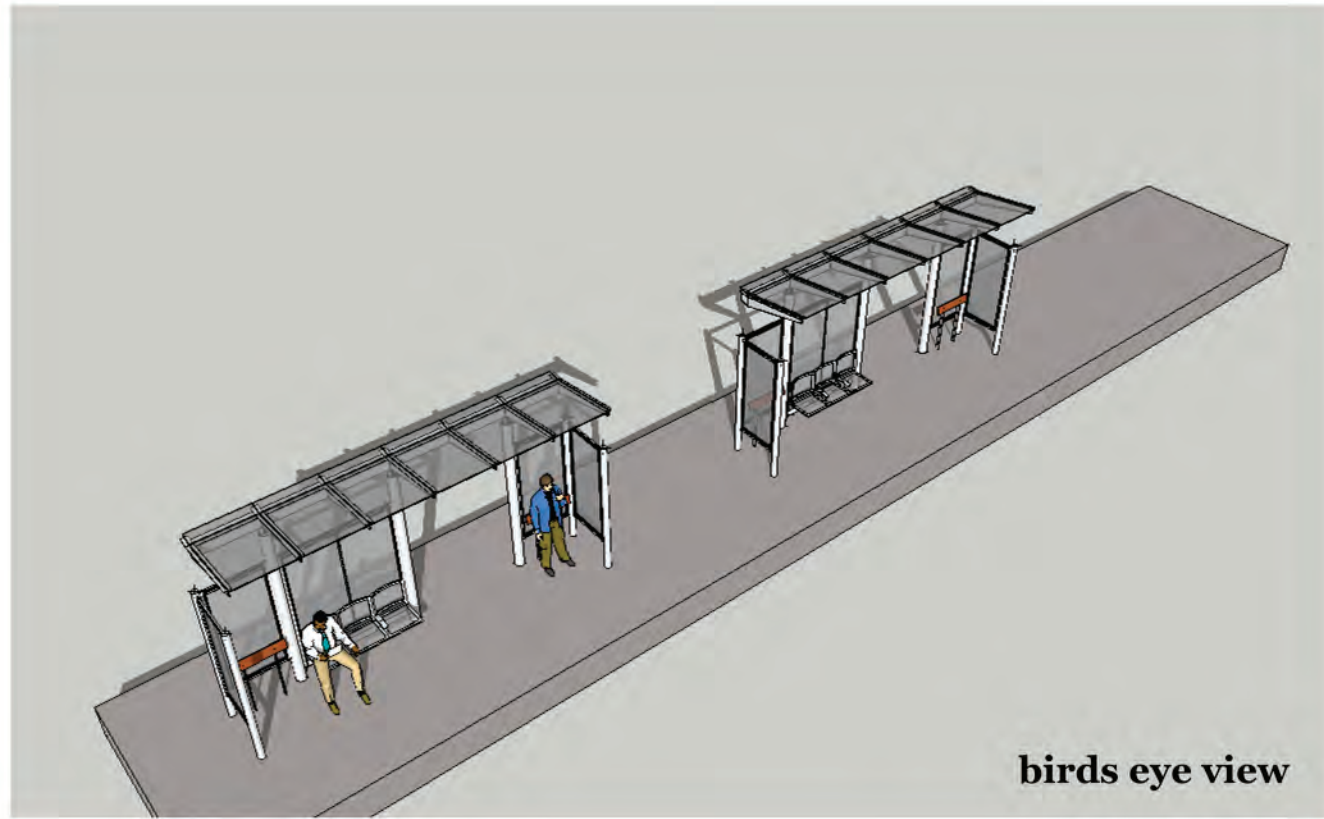
OCTA

Santa Ana
 Education 1st

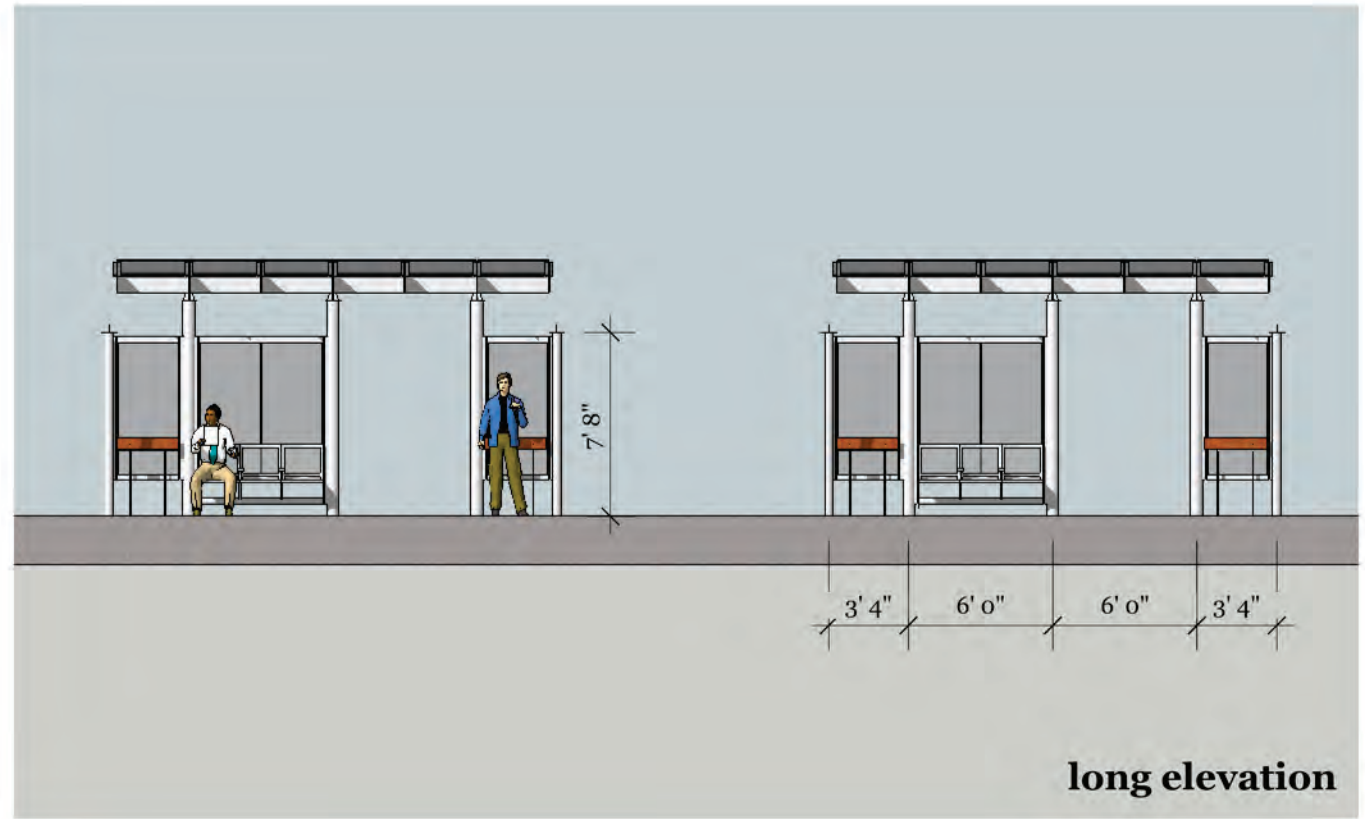
G GARDEN GROVE

**SANTA ANA AND GARDEN GROVE
 FIXED GUIDEWAY CORRIDOR
 SIDE LOADED PLATFORM
 SHELTER CONCEPT 1A**

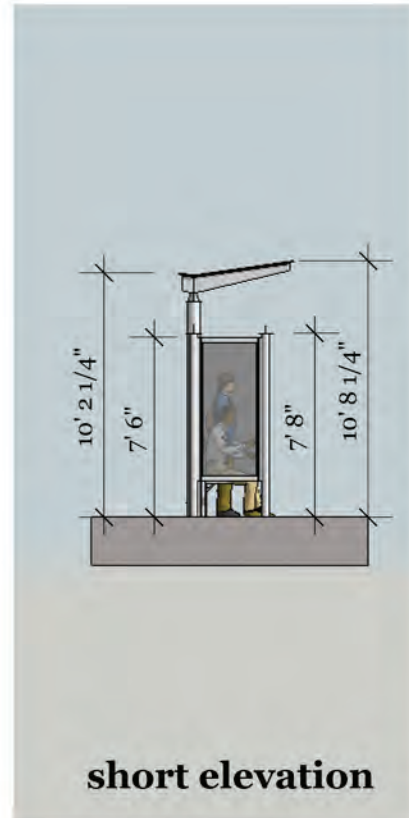
DRAWING NO.
 A - 01
 SHEET NO.
 SCALE



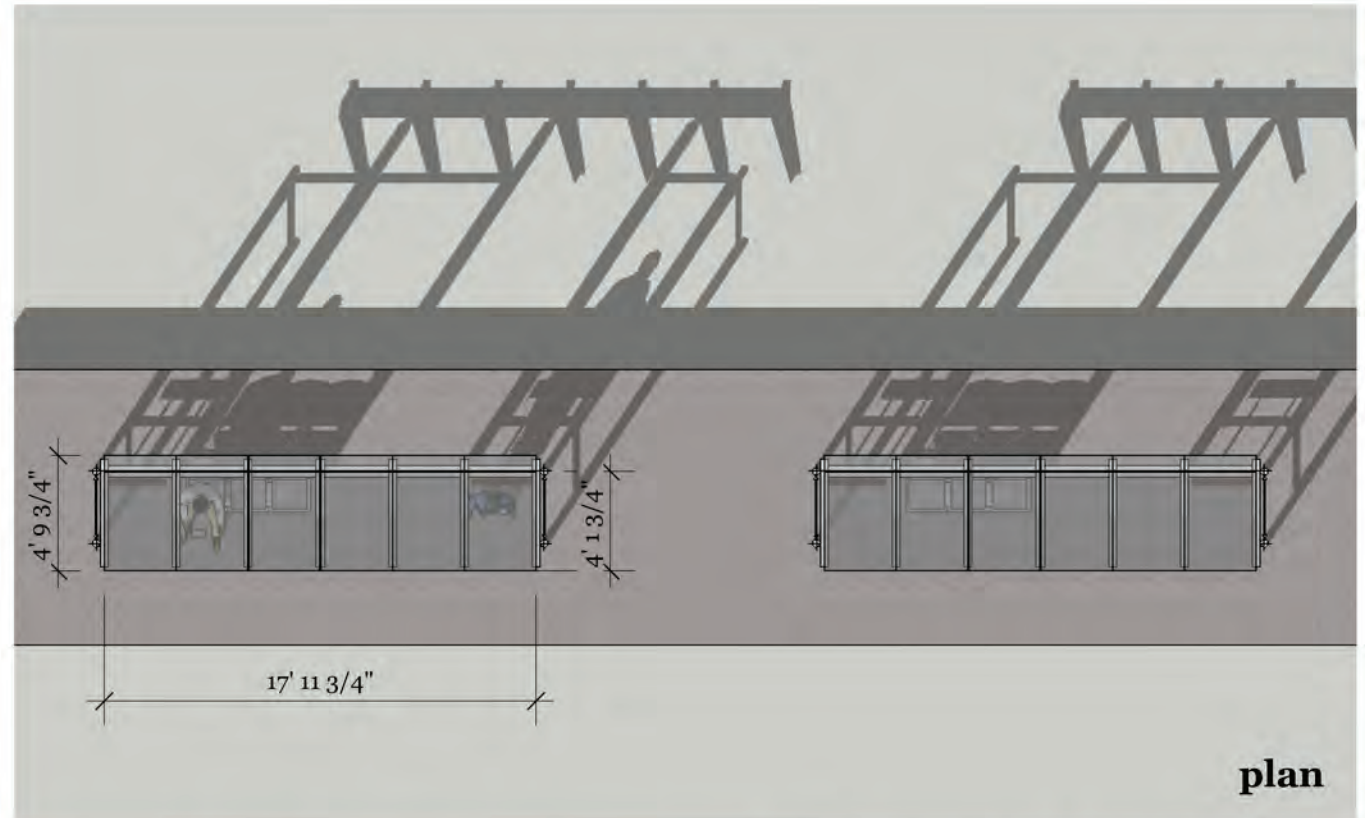
birds eye view



long elevation



short elevation



plan

C CORDOBA CORPORATION
 2677 NORTH MAIN STREET, SUITE 240
 SANTA ANA, CA 92705
 714.558.6224 PH - 714.558.8467 FAX

HNTB

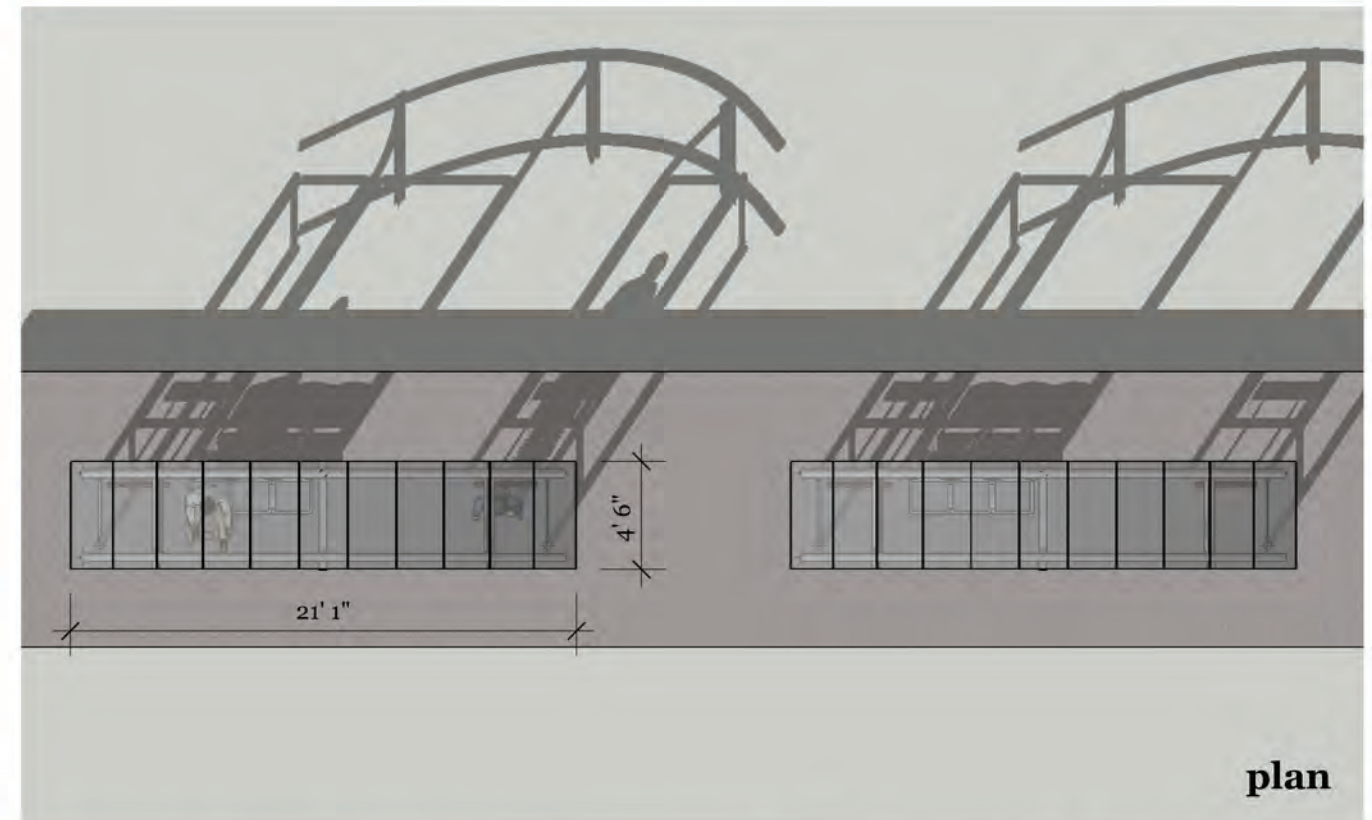
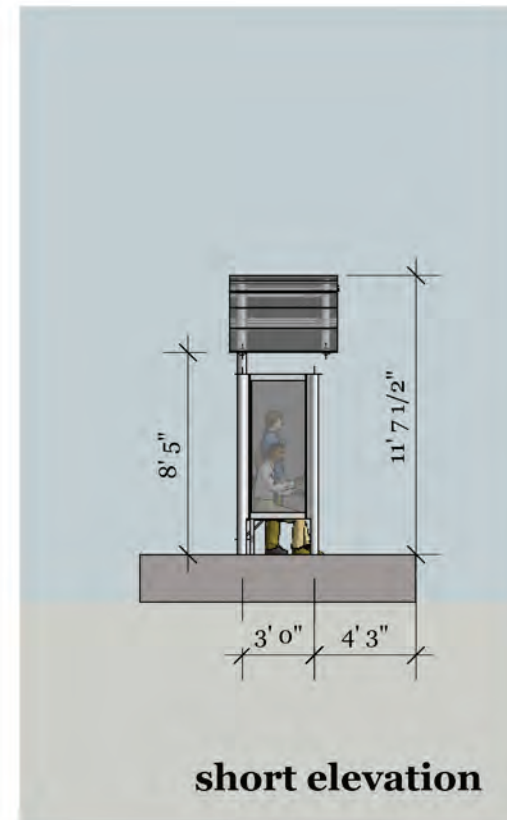
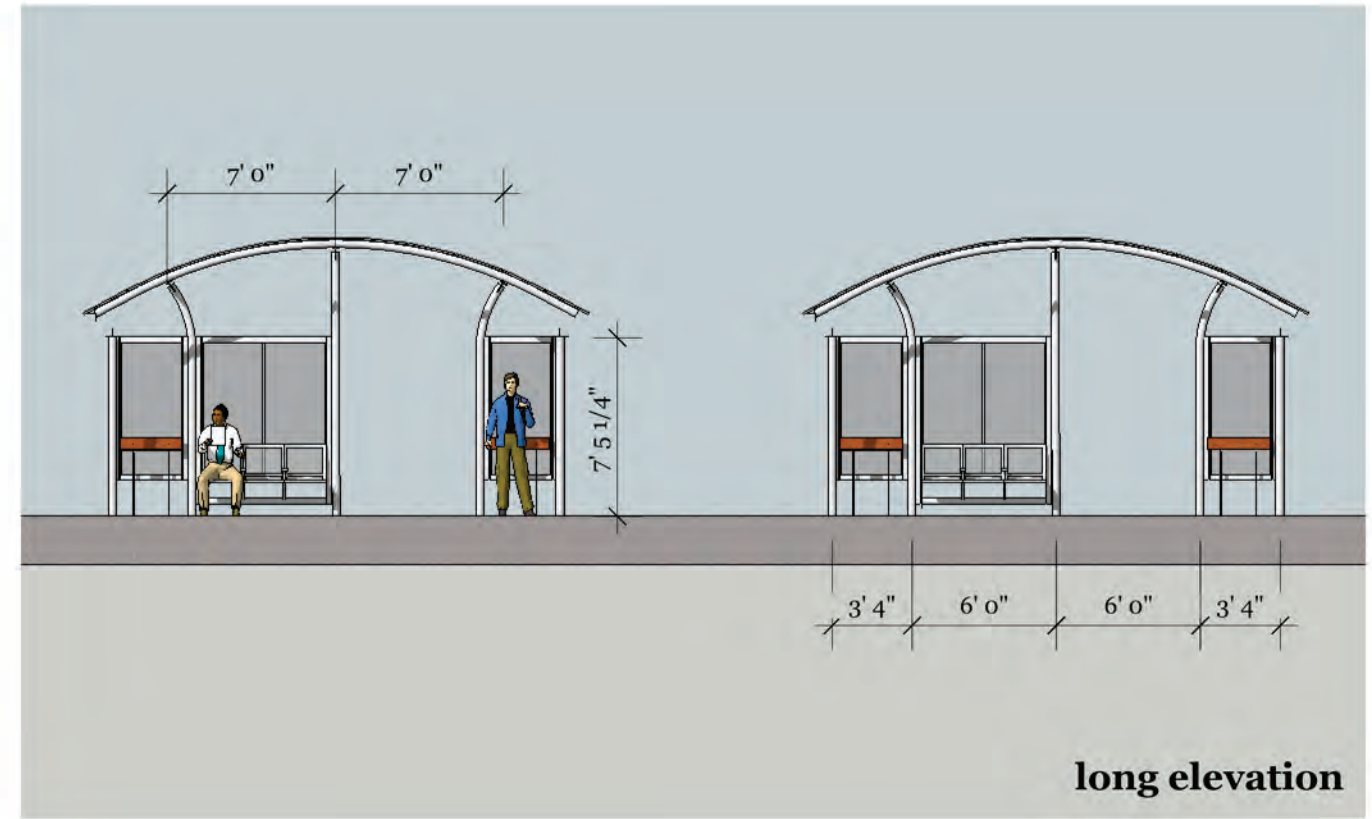
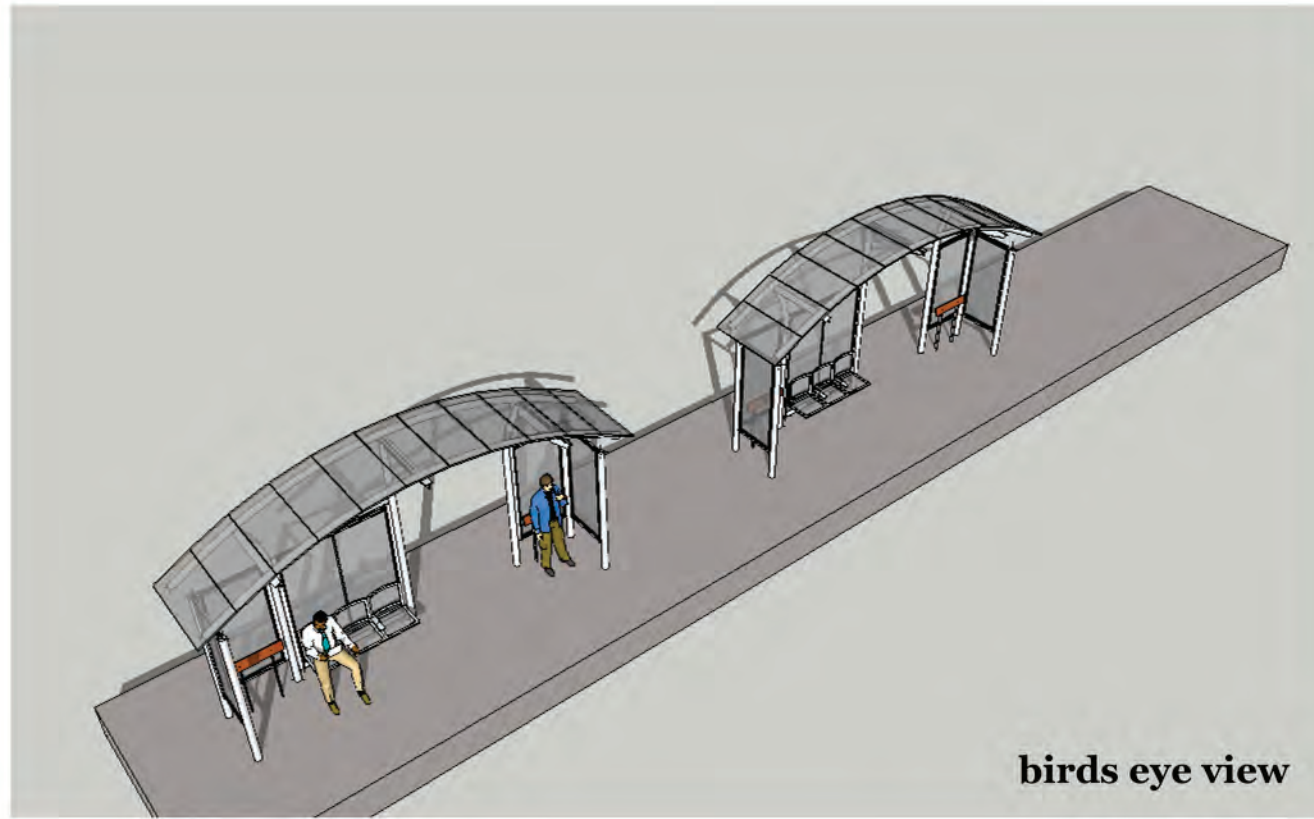
OCTA

Santa Ana
 Education 1st

G
 GARDEN GROVE

**SANTA ANA AND GARDEN GROVE
 FIXED GUIDEWAY CORRIDOR
 SIDE LOADED PLATFORM
 SHELTER CONCEPT 1B**

DRAWING NO.
 A - 02
 SHEET NO.
 SCALE



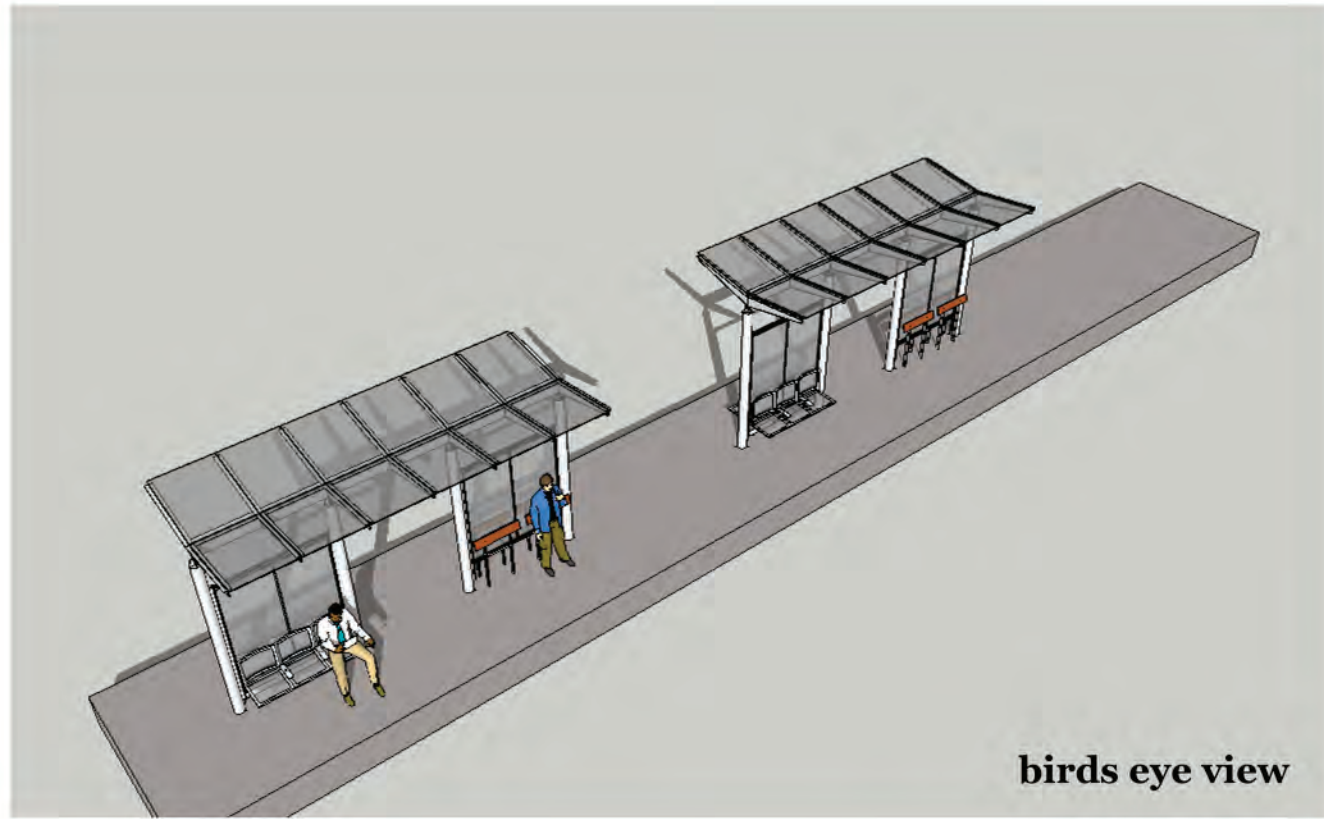
C CORDOBA CORPORATION
 2677 NORTH MAIN STREET, SUITE 240
 SANTA ANA, CA 92705
 714.558.6224 PH - 714.558.8467 FAX

HNTB

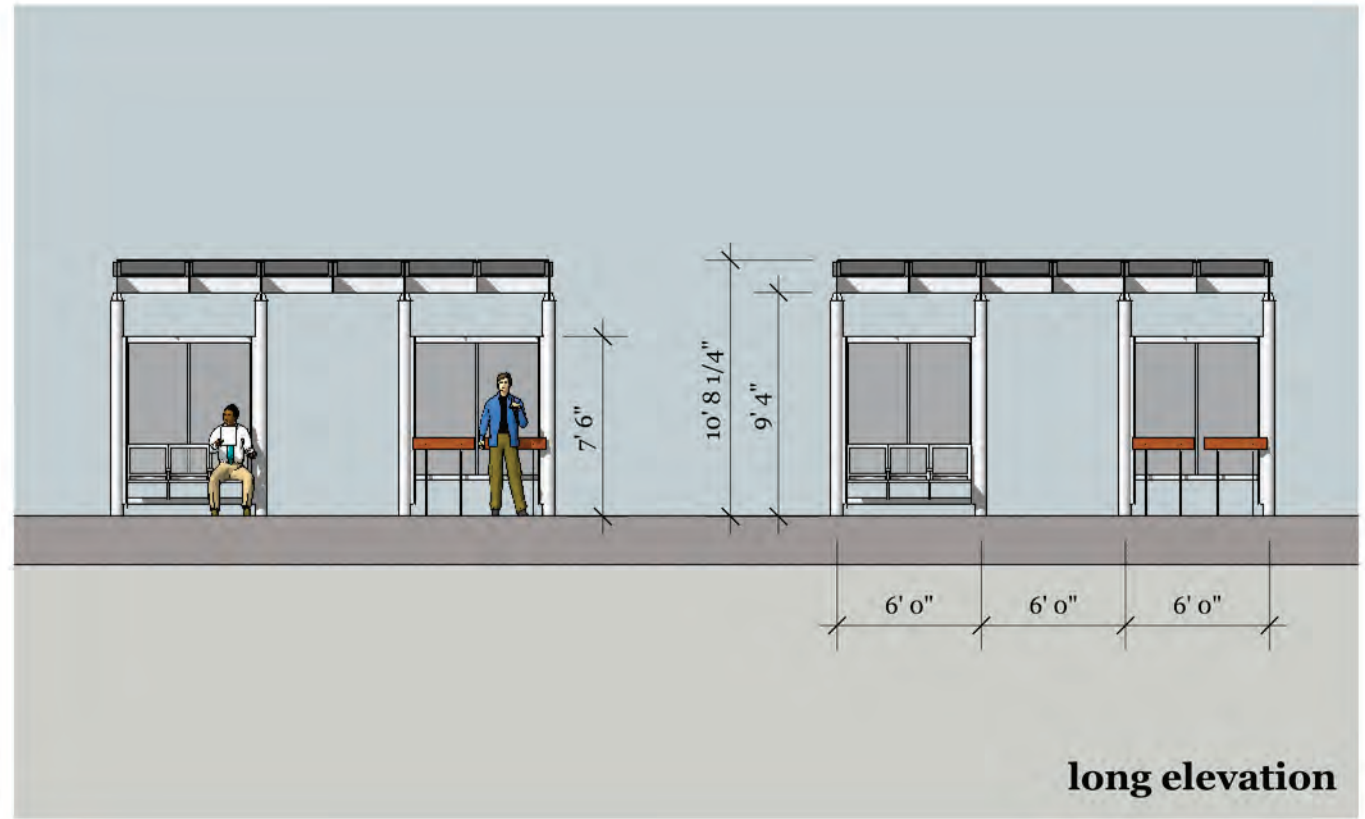
OCTA *Santa Ana* Education Inst. **G** GARDEN GROVE

**SANTA ANA AND GARDEN GROVE
 FIXED GUIDEWAY CORRIDOR
 SIDE LOADED PLATFORM
 SHELTER CONCEPT 2A**

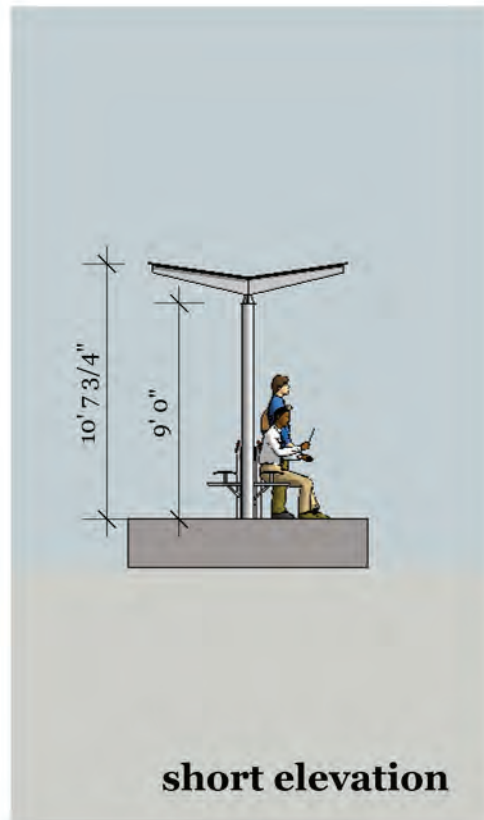
DRAWING NO.
 A - 03
 SHEET NO.
 SCALE



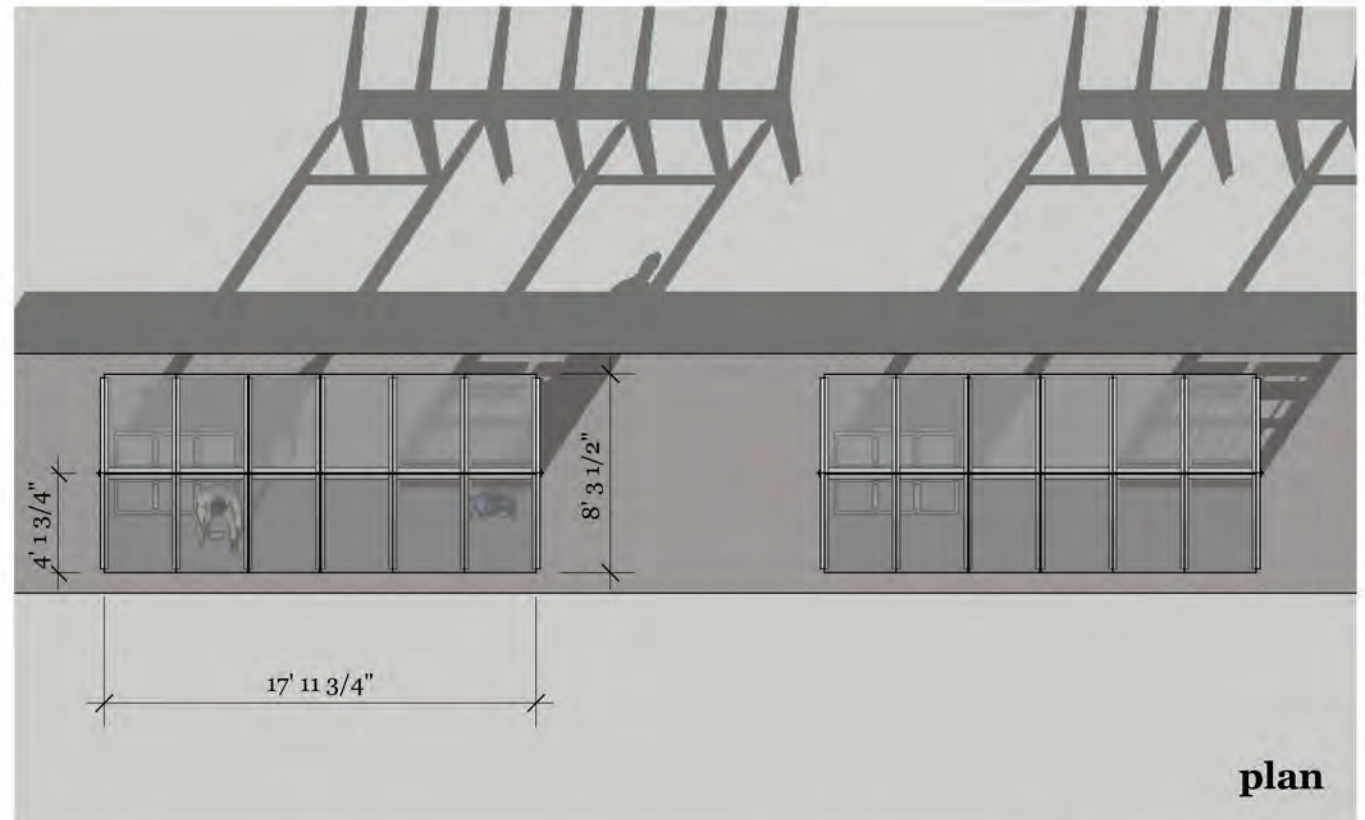
birds eye view



long elevation



short elevation



plan

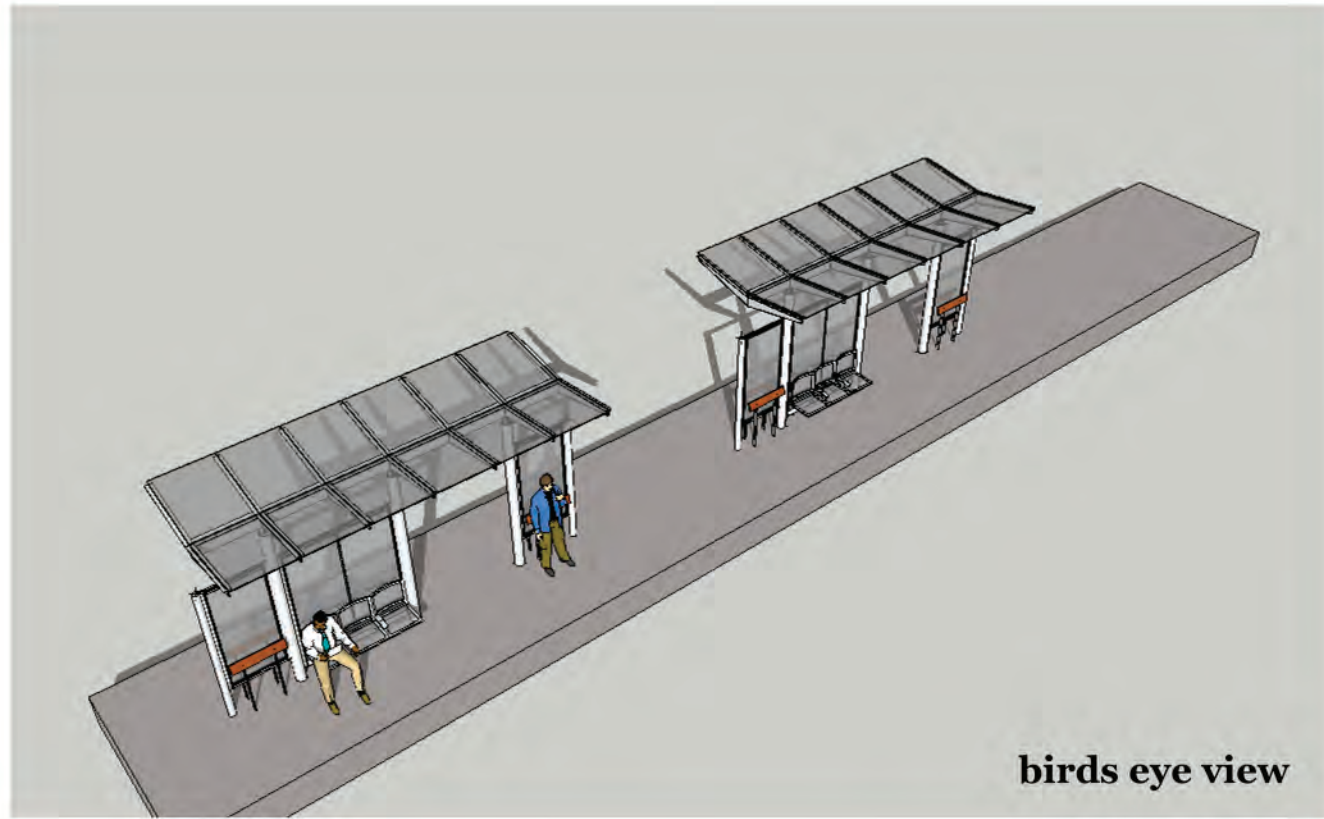
C CORDOBA CORPORATION
 2677 NORTH MAIN STREET, SUITE 240
 SANTA ANA, CA 92705
 714.558.6224 PH - 714.558.8467 FAX

HNTB

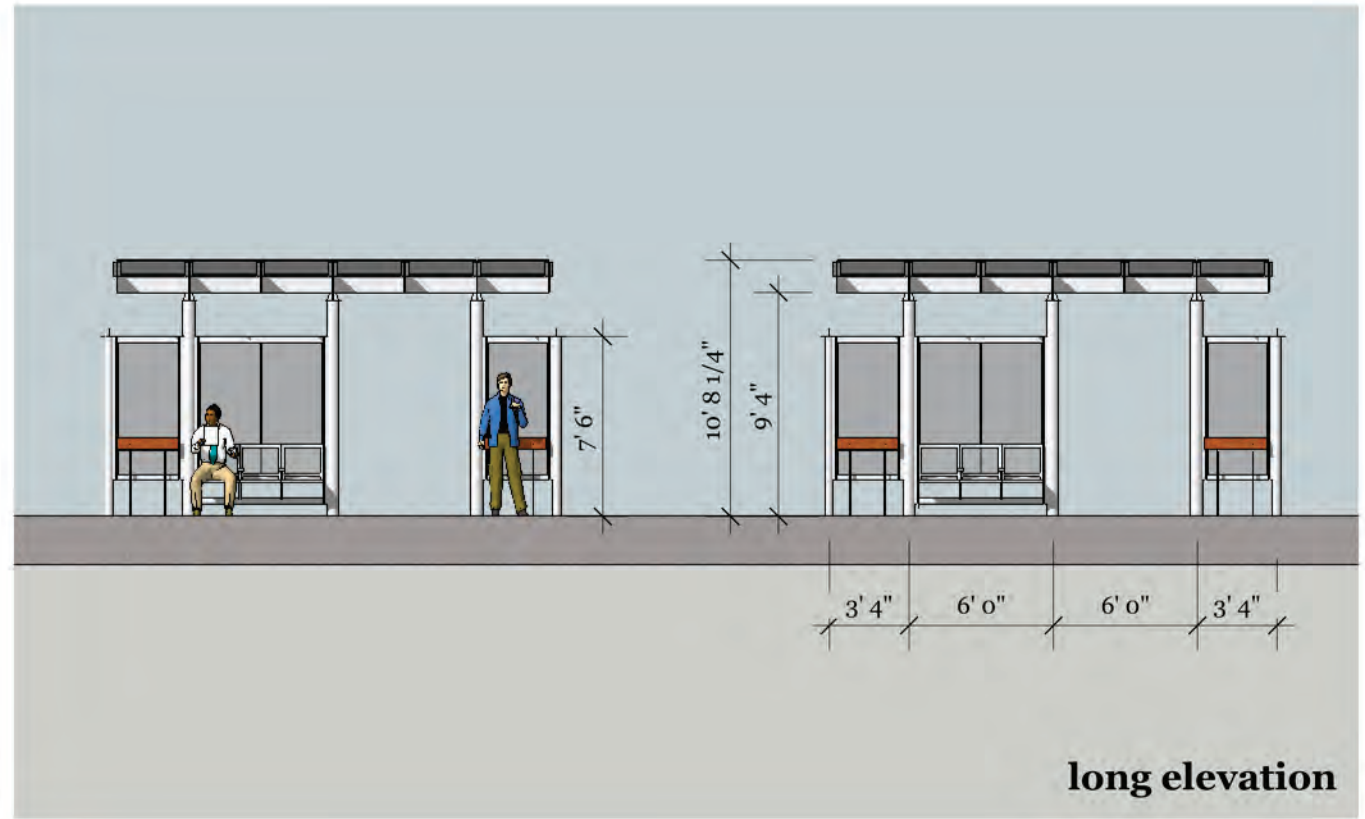
OCTA *Santa Ana* Education 1st **G** GARDEN GROVE

**SANTA ANA AND GARDEN GROVE
 FIXED GUIDEWAY CORRIDOR
 CENTER LOADED PLATFORM
 SHELTER CONCEPT 1A**

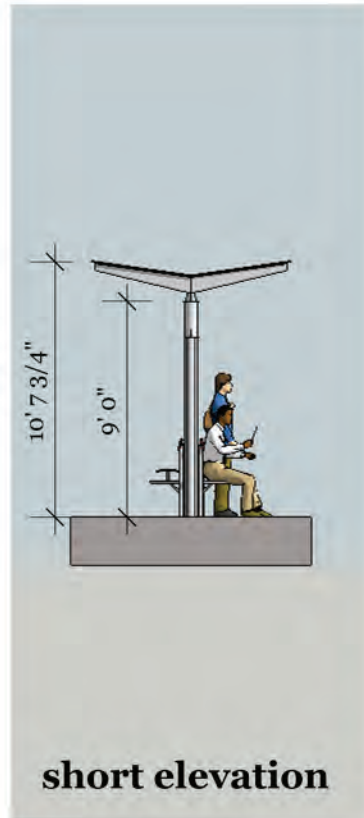
DRAWING NO.	A - 04
SHEET NO.	
SCALE	



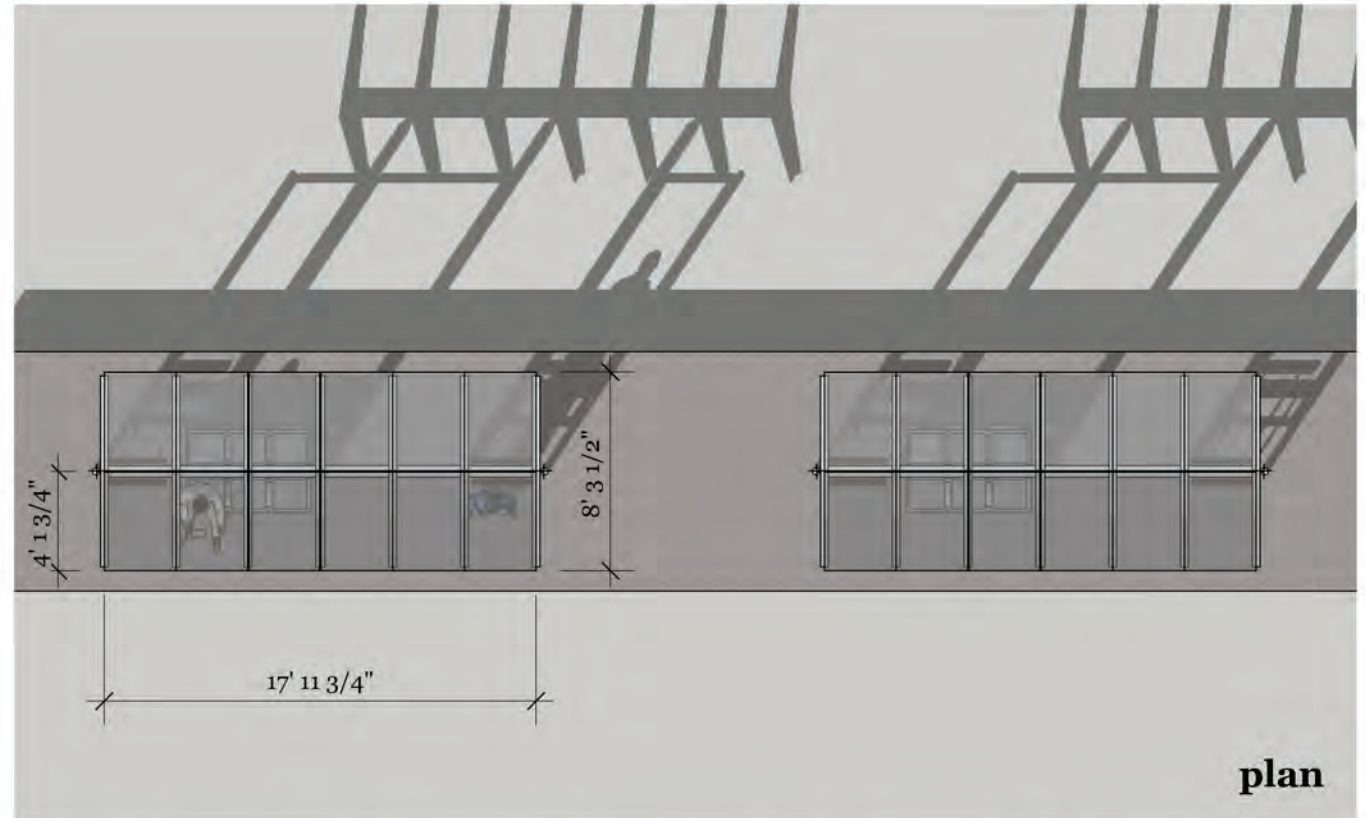
birds eye view



long elevation



short elevation



plan

C CORDOBA CORPORATION
2677 NORTH MAIN STREET, SUITE 240
SANTA ANA, CA 92705
714.558.6224 PH - 714.558.8467 FAX

HNTB

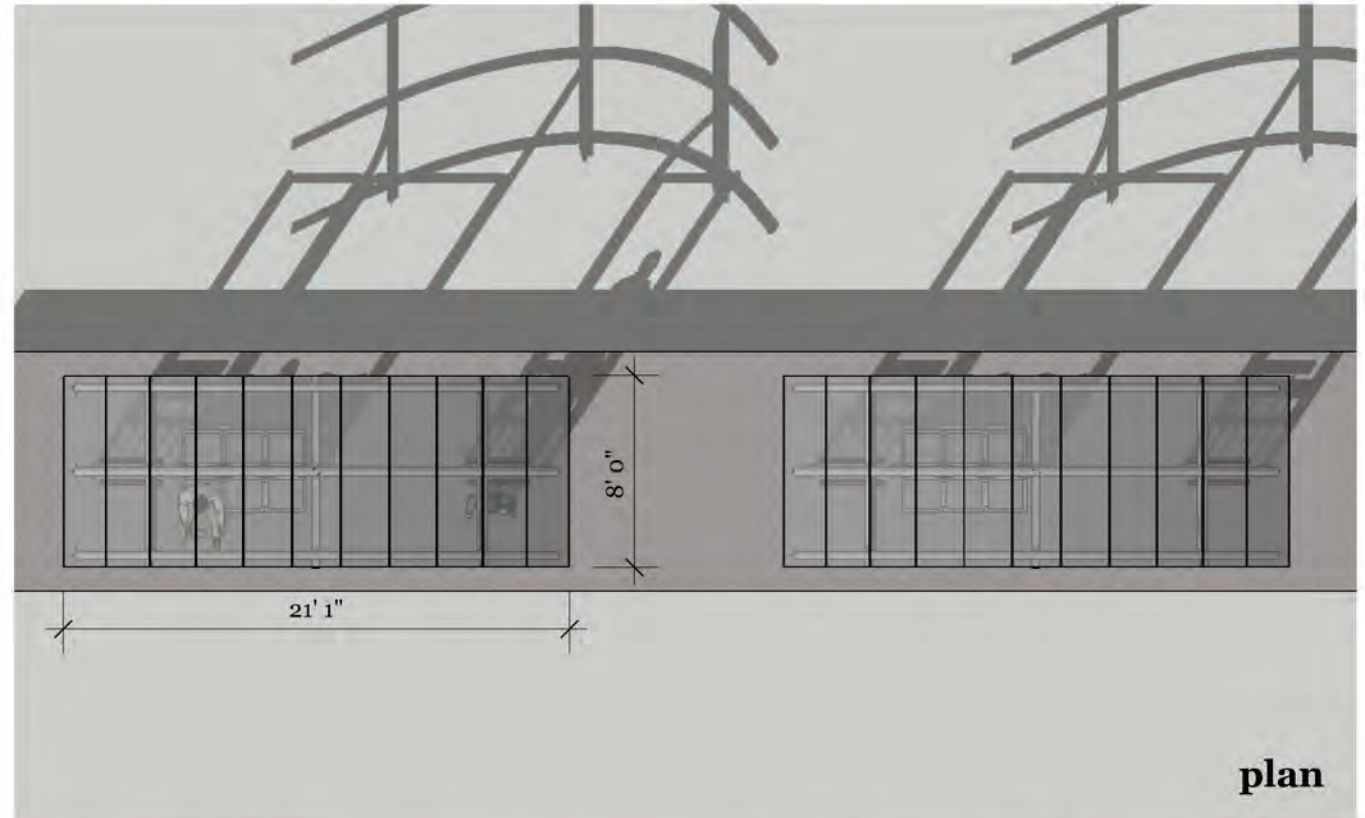
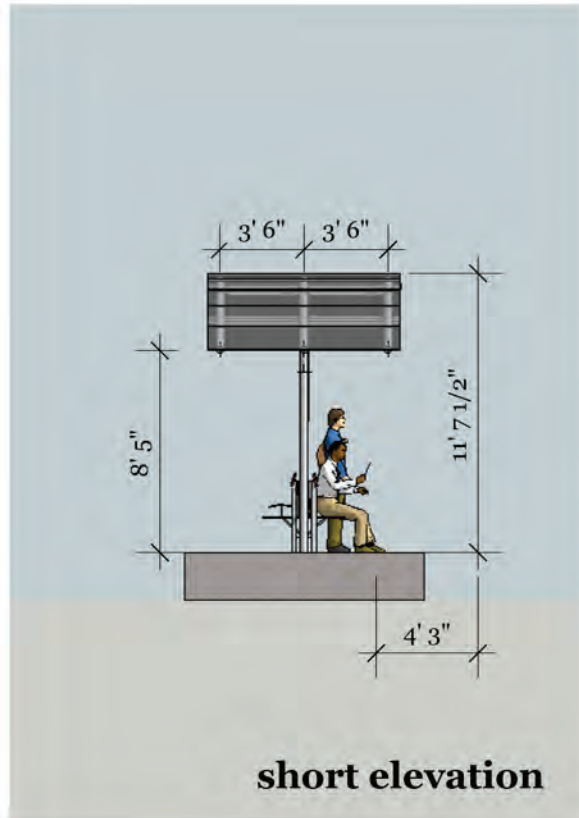
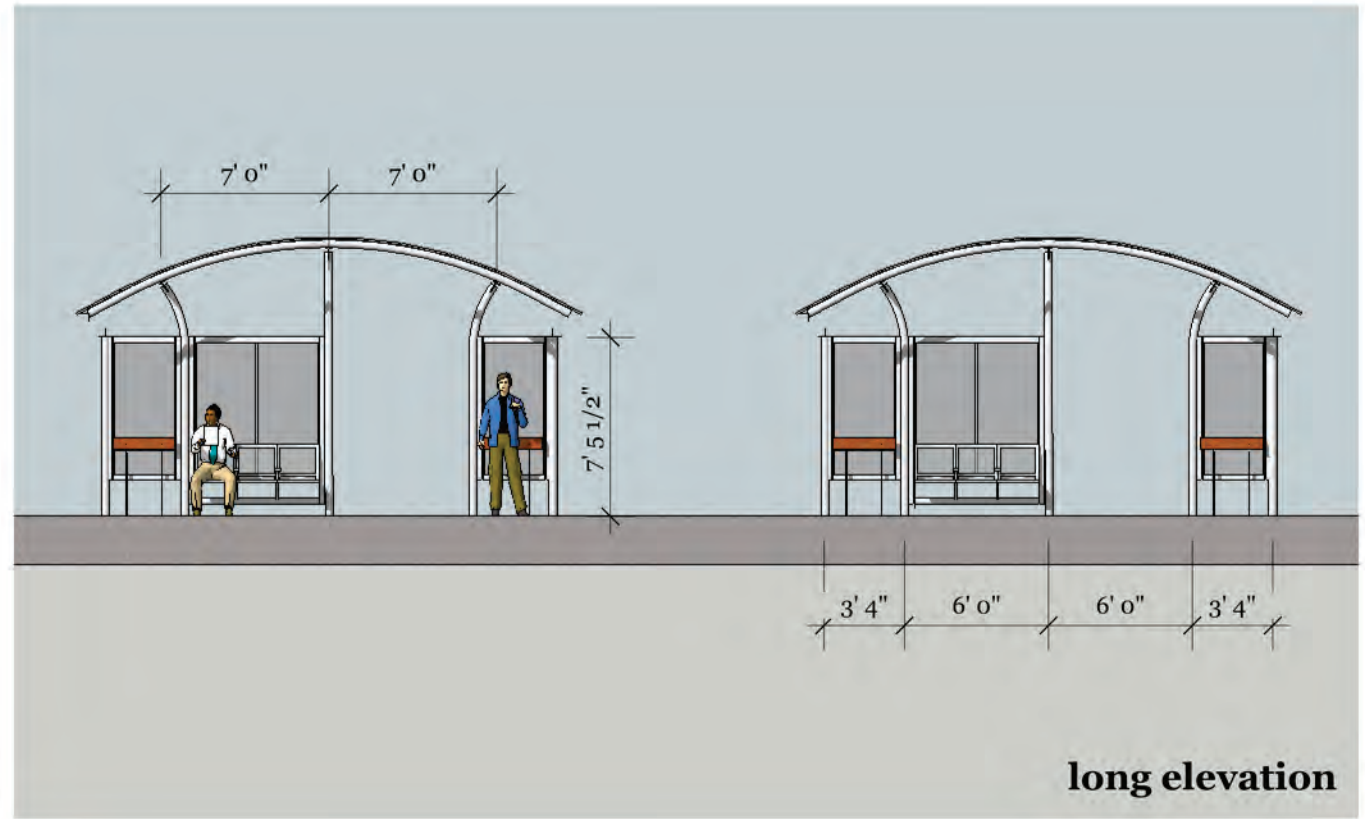
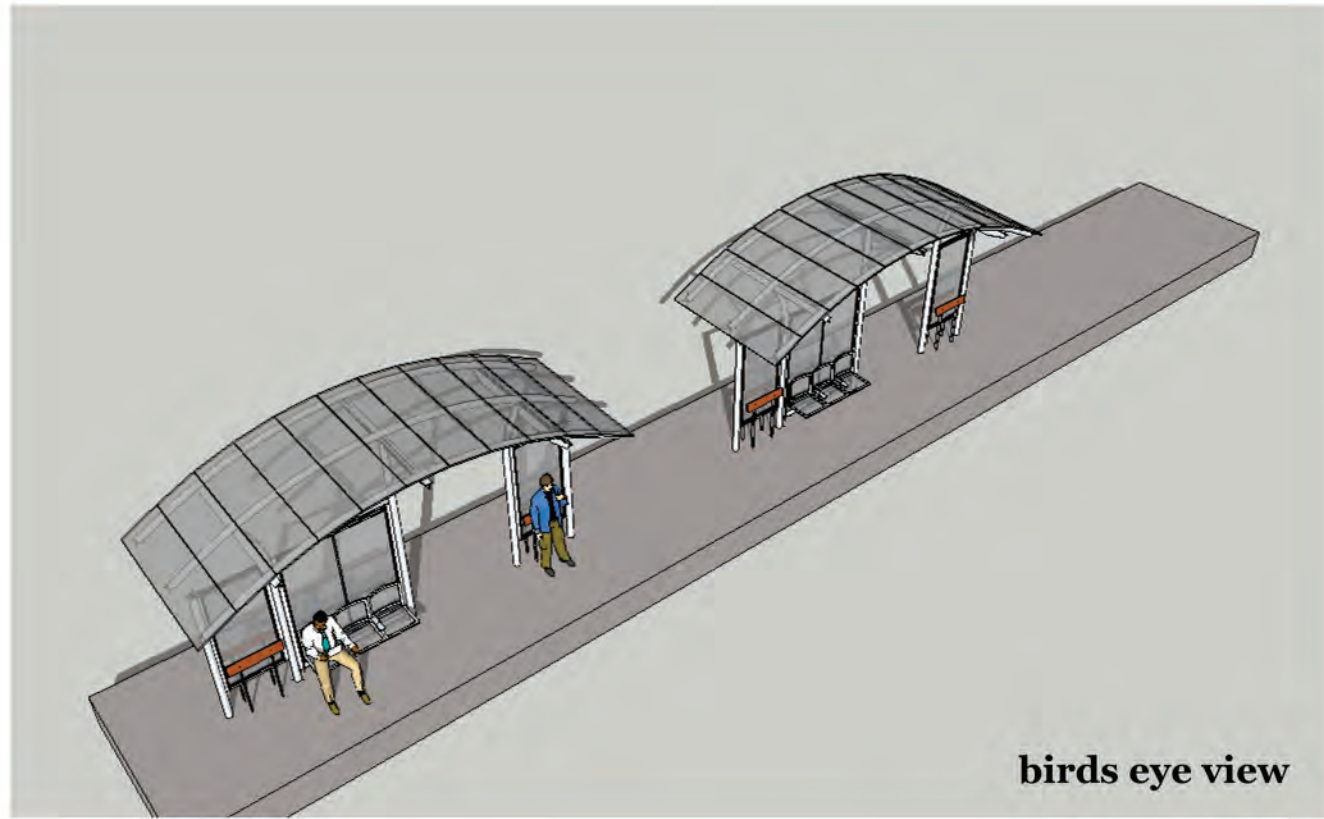
OCTA

Santa Ana
Education 1st

G GARDEN GROVE

**SANTA ANA AND GARDEN GROVE
FIXED GUIDEWAY CORRIDOR
CENTER LOADED PLATFORM
SHELTER CONCEPT 1B**

DRAWING NO.
A - 05
SHEET NO.
SCALE



C CORDOBA CORPORATION
 2677 NORTH MAIN STREET, SUITE 240
 SANTA ANA, CA 92705
 714.558.6224 PH - 714.558.8467 FAX

HNTB

OCTA

Santa Ana
 Education 1st

G GARDEN GROVE

**SANTA ANA AND GARDEN GROVE
 FIXED GUIDEWAY CORRIDOR
 CENTER LOADED PLATFORM
 SHELTER CONCEPT 2A**

DRAWING NO.
 A - 06
 SHEET NO.
 SCALE