



Redistricting Overview City of Santa Ana

Overview of CVRA and
Redistricting Process

City Council Meeting 9/4/2018
Item 75C

What is the CVRA?

The California Voting Rights Act is a state law that prohibits the use of At-Large election systems in local government if there is racially polarized voting.

“At Large” is defined as anything other than a system in which an elected official lives in a district, and is only elected by members of that district.

“Racially Polarized Voting” is determined through an analysis which quantifies the amount of voting which can be shown to be correlated to race.

What is the CVRA?

The California Voting Rights Act takes the principles of the Federal Voting Rights Act and expands it regarding districted elections in two key ways:

While Federal law uses “majority minority” districts as a standard for vulnerability, the CVRA only requires “ability to influence.”

The CVRA requires that plaintiffs get full reimbursement for legal fees associated with any successful challenge.

Traditional Redistricting Principles

Should be followed by City of Santa Ana

There are a number of criteria that have been used nationally and upheld by courts.

- Relatively equal size - people, not citizens
- Contiguous – districts should not hop/jump
- Maintain “*communities of interest*”
- Follow city/county/local government lines
- Keep districts compact – appearance/function

Traditional Redistricting Principles

Should be followed by Local Agencies

There are a number of criteria that have been used nationally and upheld by courts.

- **Relatively equal size - people, not citizens**
- Contiguous – districts should not hop/jump
- Maintain “*communities of interest*”
- Follow city/county/local government lines
- Keep districts compact – appearance/function

Traditional Redistricting Principles

Should be followed by Local Agencies

The “equal size” for the purposes of redistricting comes from the 2010 Census population.

- 2010 Population: 324,585
- Median District Size: 54,098
- 5% Deviation Largest: 55,450
 Smallest: 52,745

Traditional Redistricting Principles

Should be followed by Local Agencies

Other measures of population can be considered in line redistricting process, but NOT for the actual size of the districts, which has to use 2010 Census Population.

- Current ACS Population: 332,935 (2.5% Growth)
- ACS Adult Citizens: 140,419
- Current Voter Registration: 98,322

Traditional Redistricting Principles

Should be followed by Local Agencies

There are a number of criteria that have been used nationally and upheld by courts.

- Relatively equal size - people, not citizens
- **Contiguous – districts should not hop/jump**
- Maintain “*communities of interest*”
- Follow city/county/local government lines
- Keep districts compact – appearance/function

Traditional Redistricting Principles

Should be followed by Local Agencies

There are a number of criteria that have been used nationally and upheld by courts.

- Relatively equal size - people, not citizens
- Contiguous – districts should not hop/jump
- **Maintain “communities of interest”**
- Follow city/county/local government lines
- Keep districts compact – appearance/function

Communities of Interest

Bringing like people together for representation

What is a community of interest includes ethnic and language minorities and other groups.

- Communities covered by the Voting Rights Act
 - Latinos
 - Asians
 - African Americans
 - Religious communities
 - Other Nationality/Ethnic communities

City of Santa Ana

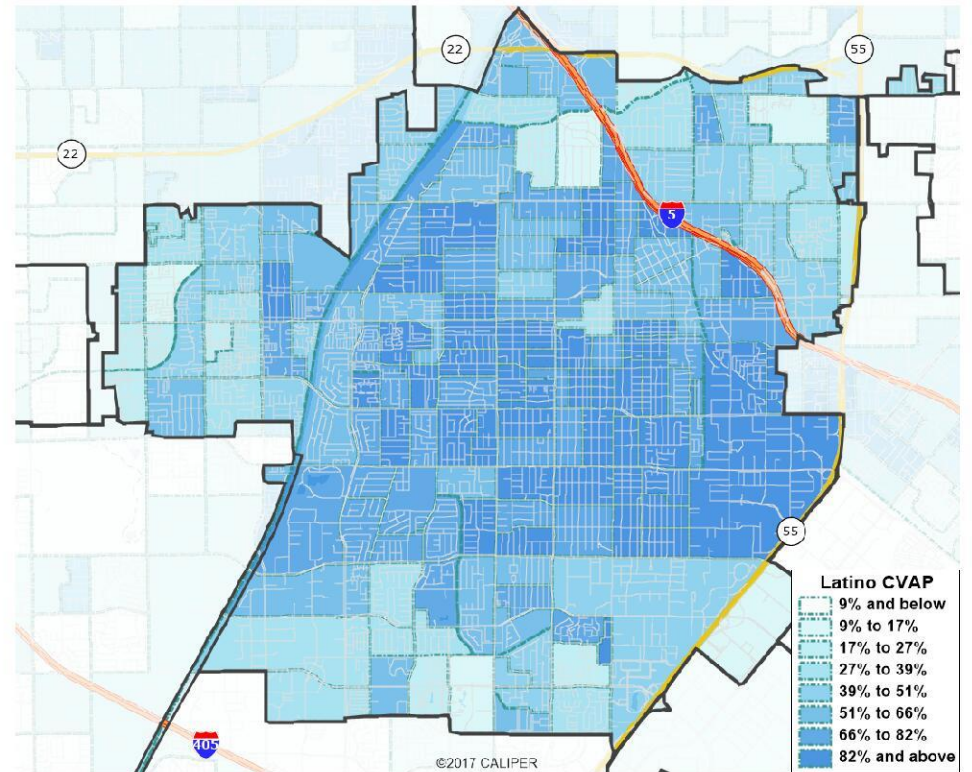
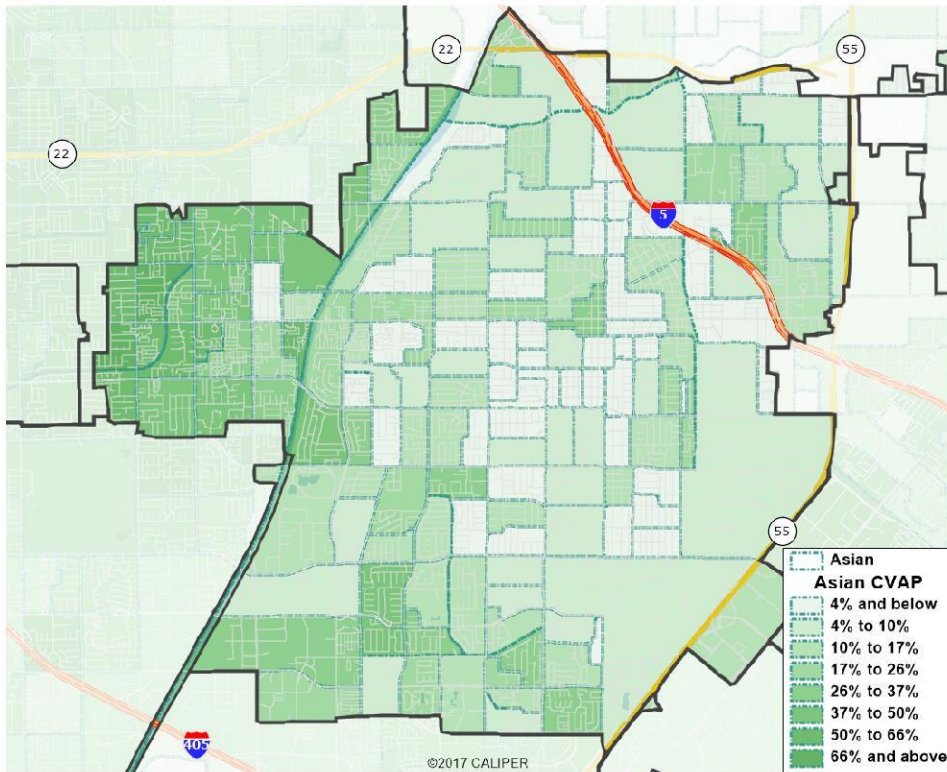
Latino and Asian Communities

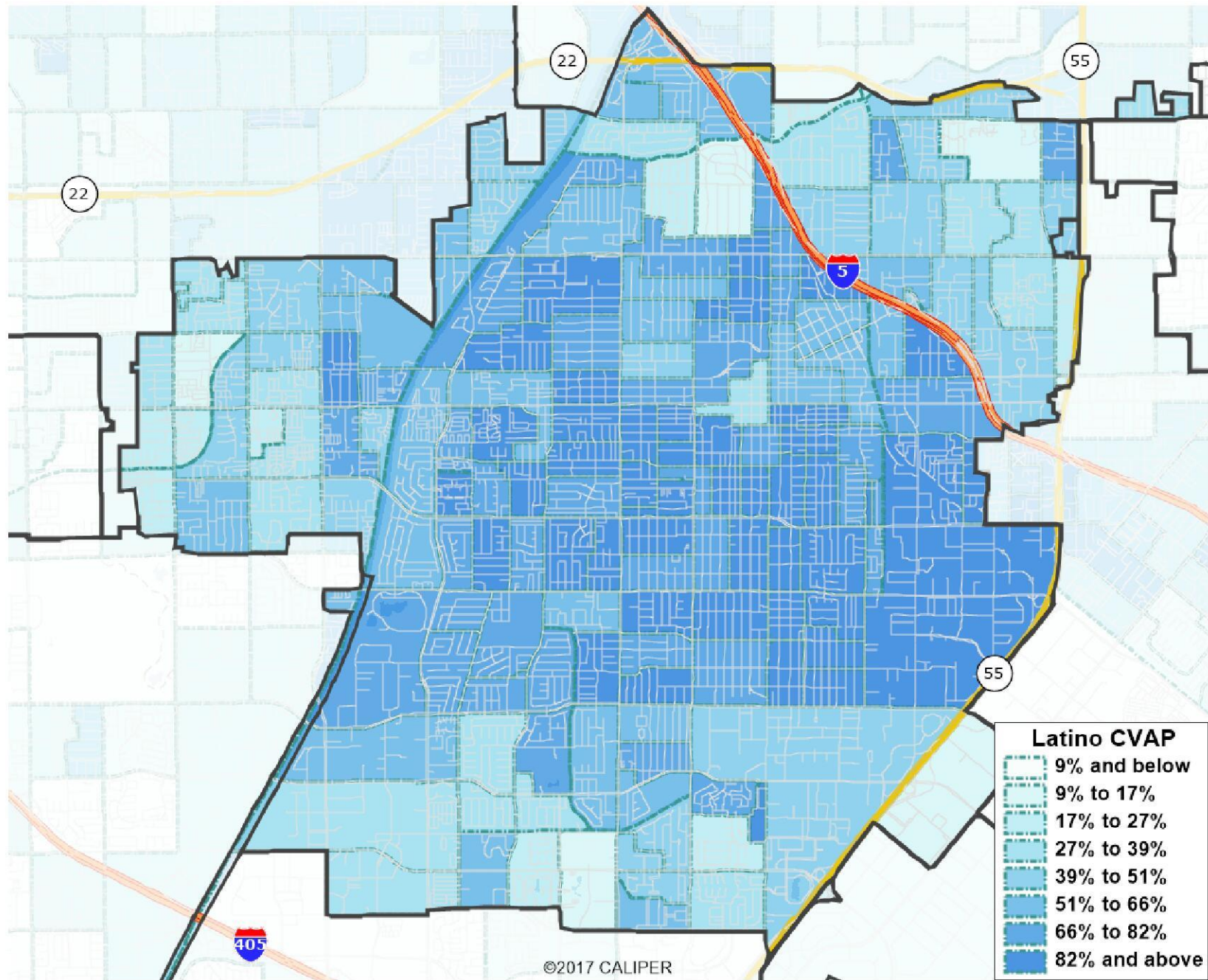
There are densities of Latino and Asian population that will need to be considered in line drawing process.

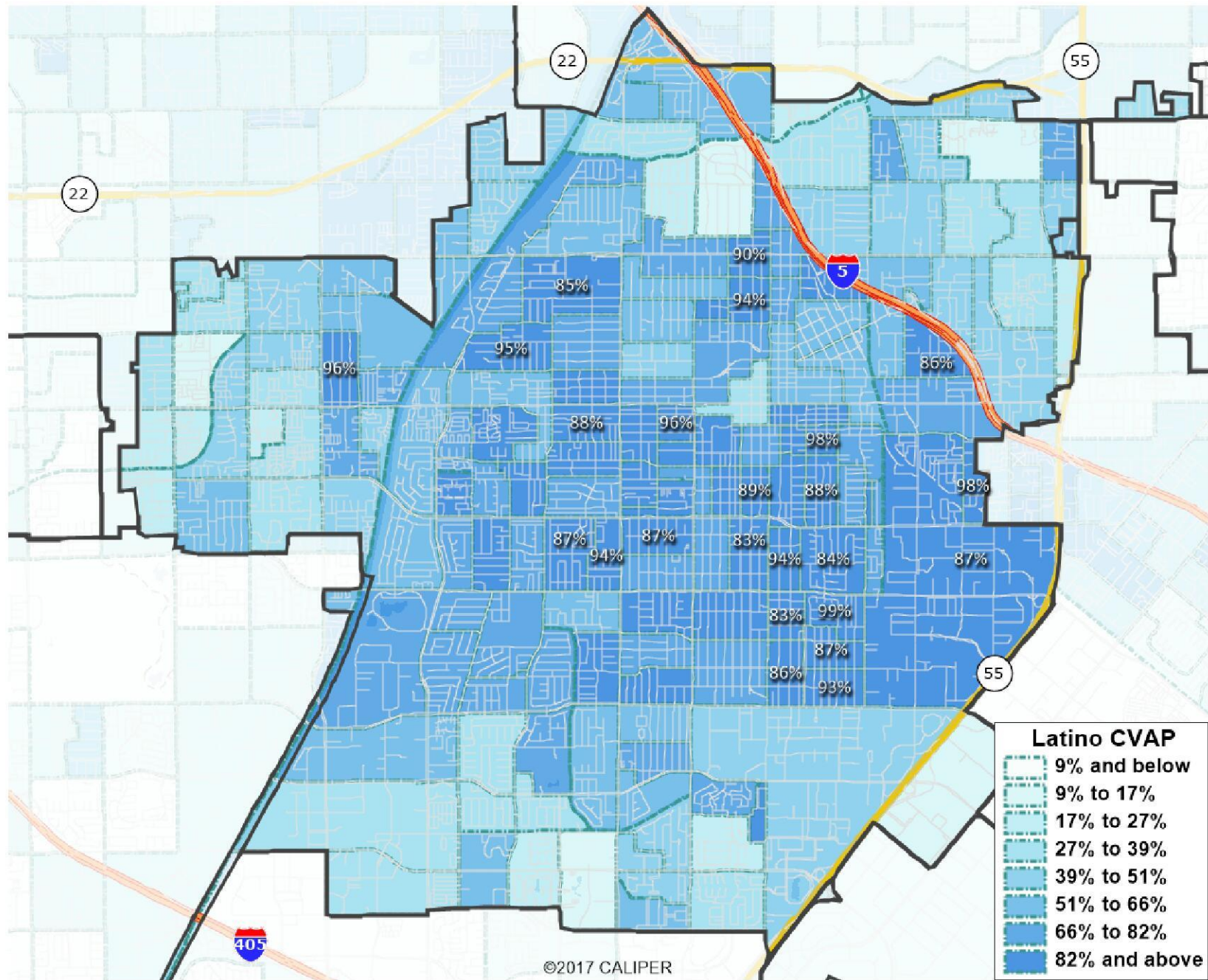
- For ethnic populations we are concerned with the “Citizen Voting Age Population” (CVAP) as calculated by the US Census in annually through the American Community Survey.
- Base ethnicity of the district shows 17% Asian and 60% Latino CVAP. However, these populations are not evenly distributed - there are strong concentrations of each in parts of the district.

City of Santa Ana

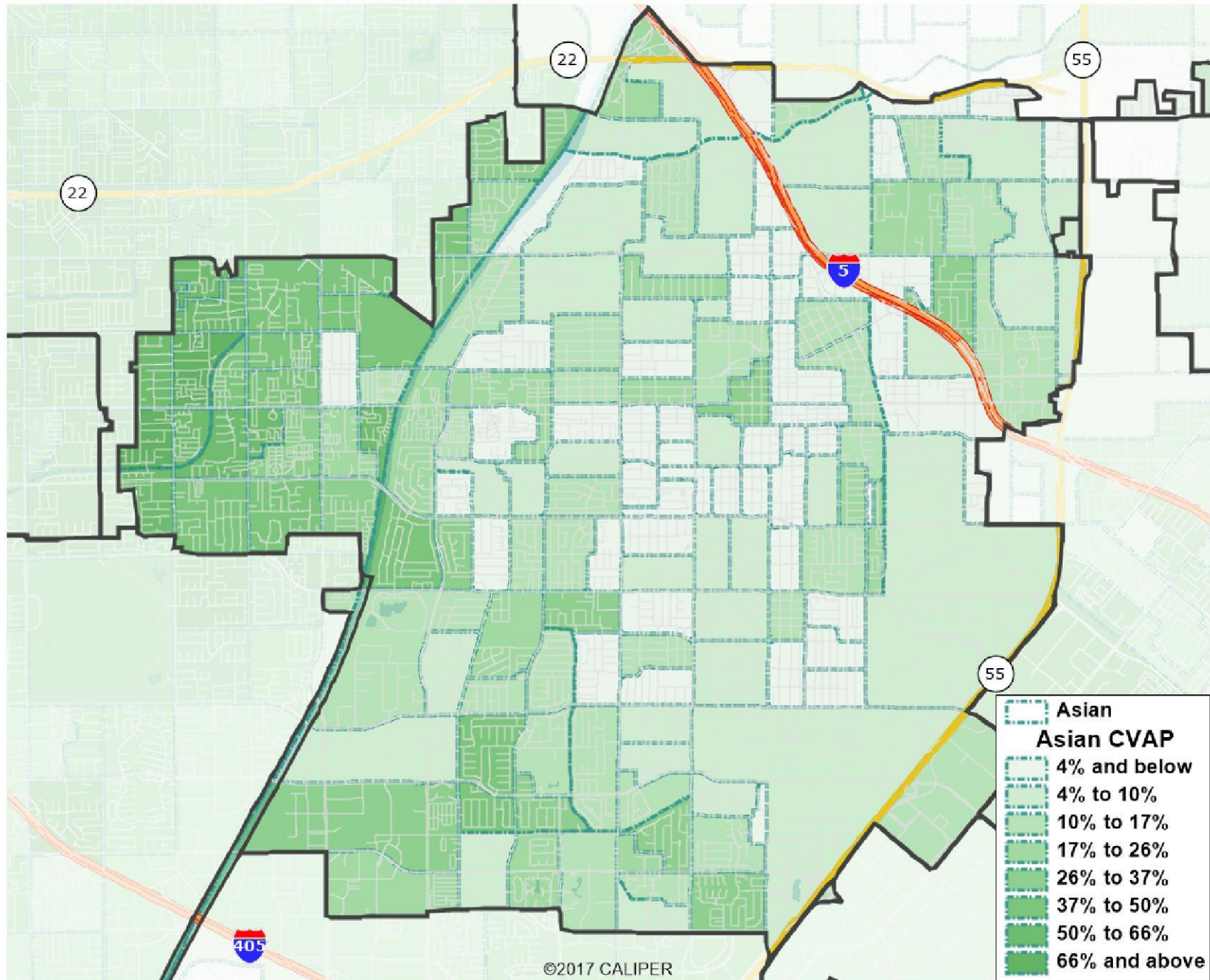
Latino and Asian Communities

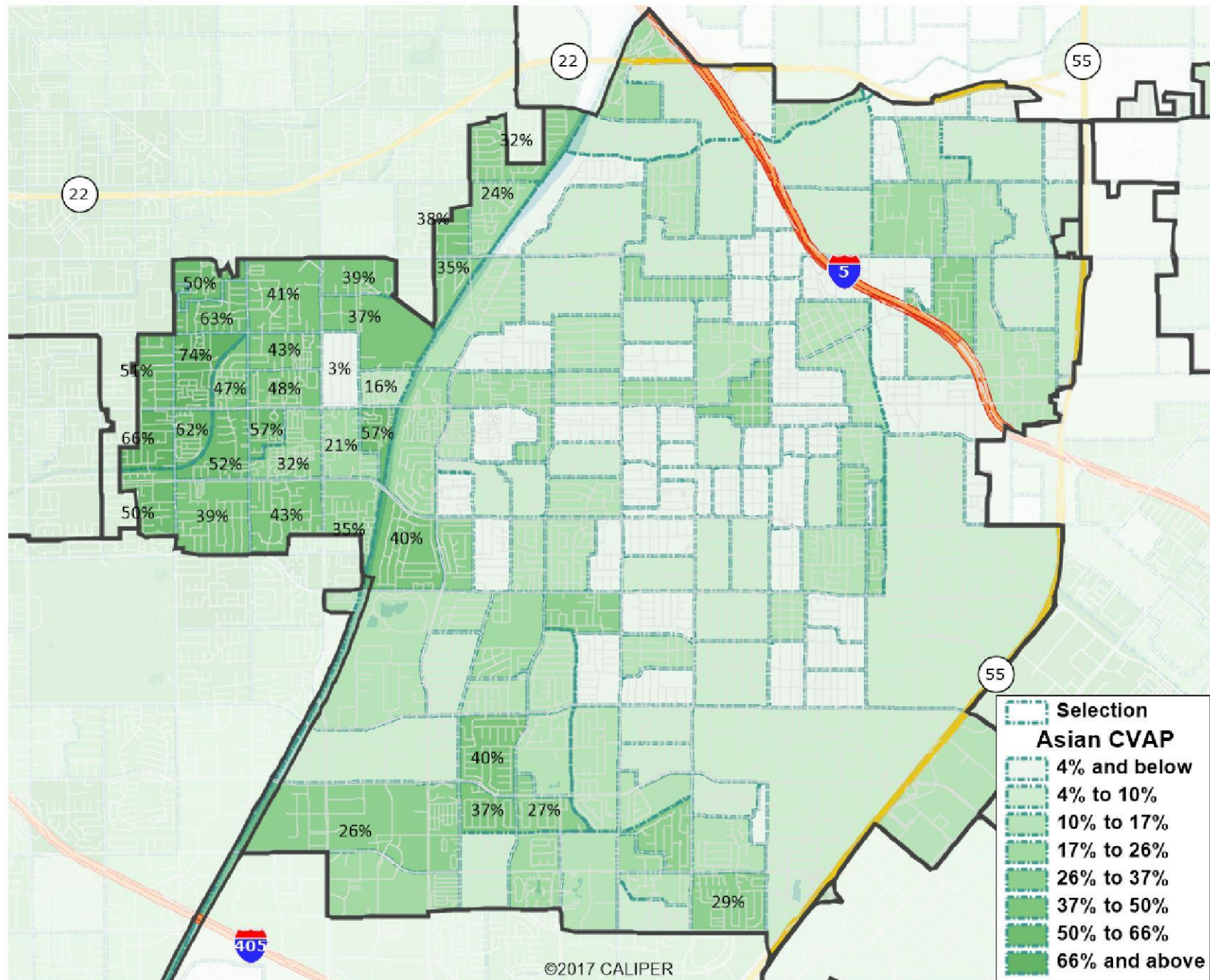






©2017 CALIPER





Communities of Interest

Bringing like people together for representation

Other communities, generally known as “communities of interest” can be determined by the council or the public. Some examples are:

- People living near an industry (agricultural, aerospace, downtown)
- Senior Citizen communities
- Coastal / River access communities
- Environmental Interests
- Homeowners or Renters

Traditional Redistricting Principles

Should be followed by Local Agencies

There are a number of criteria that have been used nationally and upheld by courts.

- Relatively equal size - people, not citizens
- Contiguous – districts should not hop/jump
- Maintain “*communities of interest*”
- **Follow city/county/local government lines**
- Keep districts compact – appearance/function

Traditional Redistricting Principles

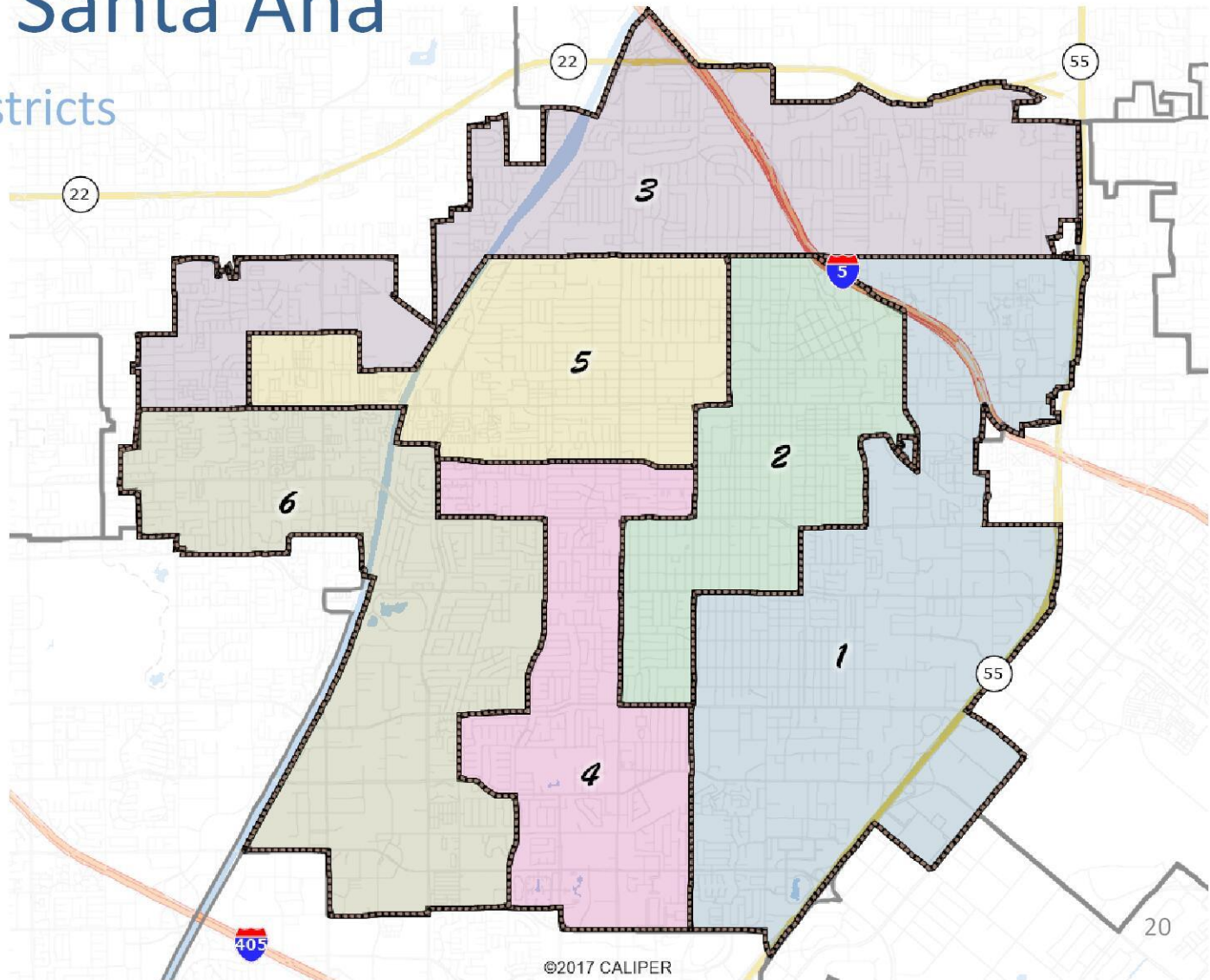
Should be followed by Local Agencies

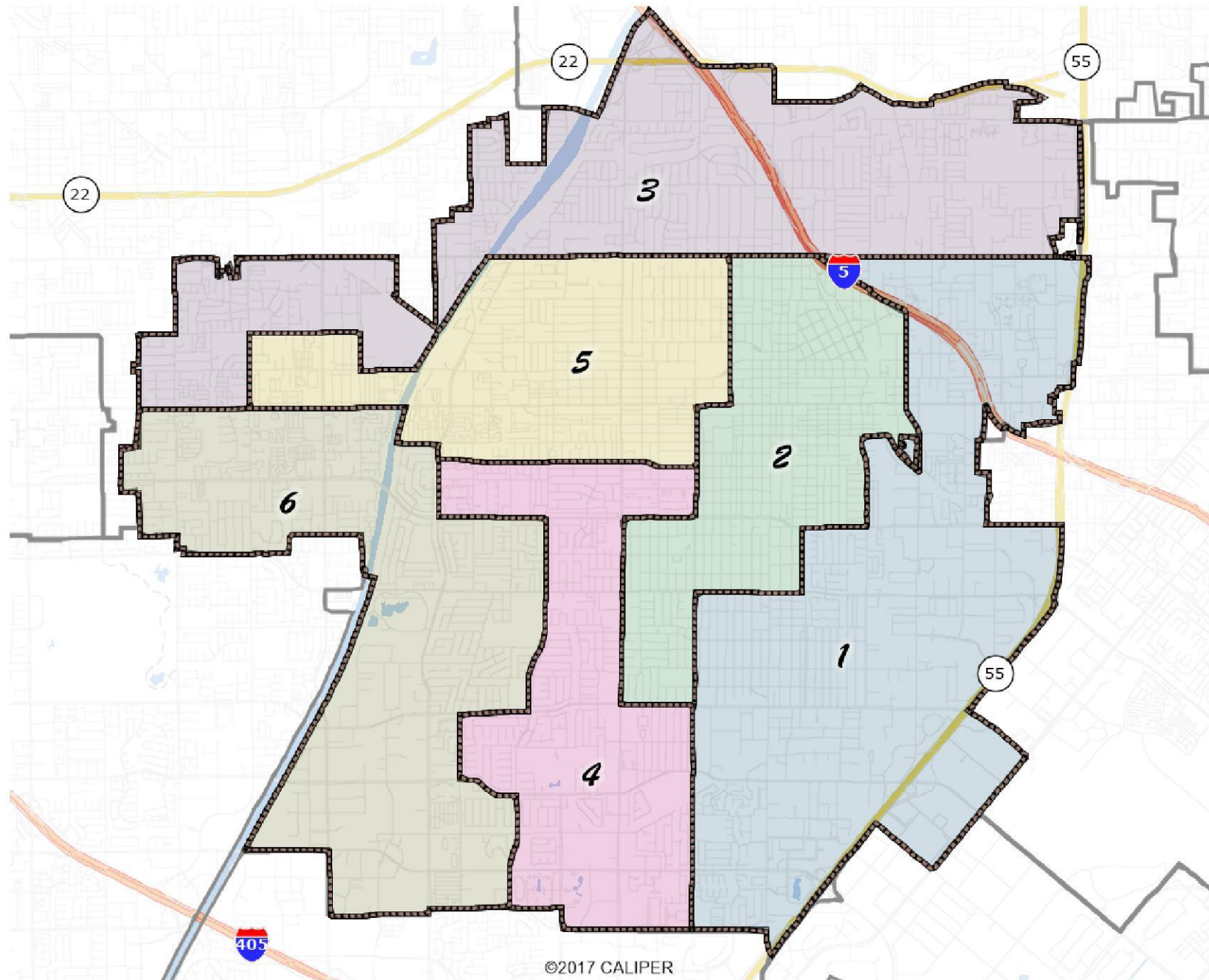
There are a number of criteria that have been used nationally and upheld by courts.

- Relatively equal size - people, not citizens
- Contiguous – districts should not hop/jump
- Maintain “*communities of interest*”
- Follow city/county/local government lines
- **Keep districts compact – appearance/function**

City of Santa Ana

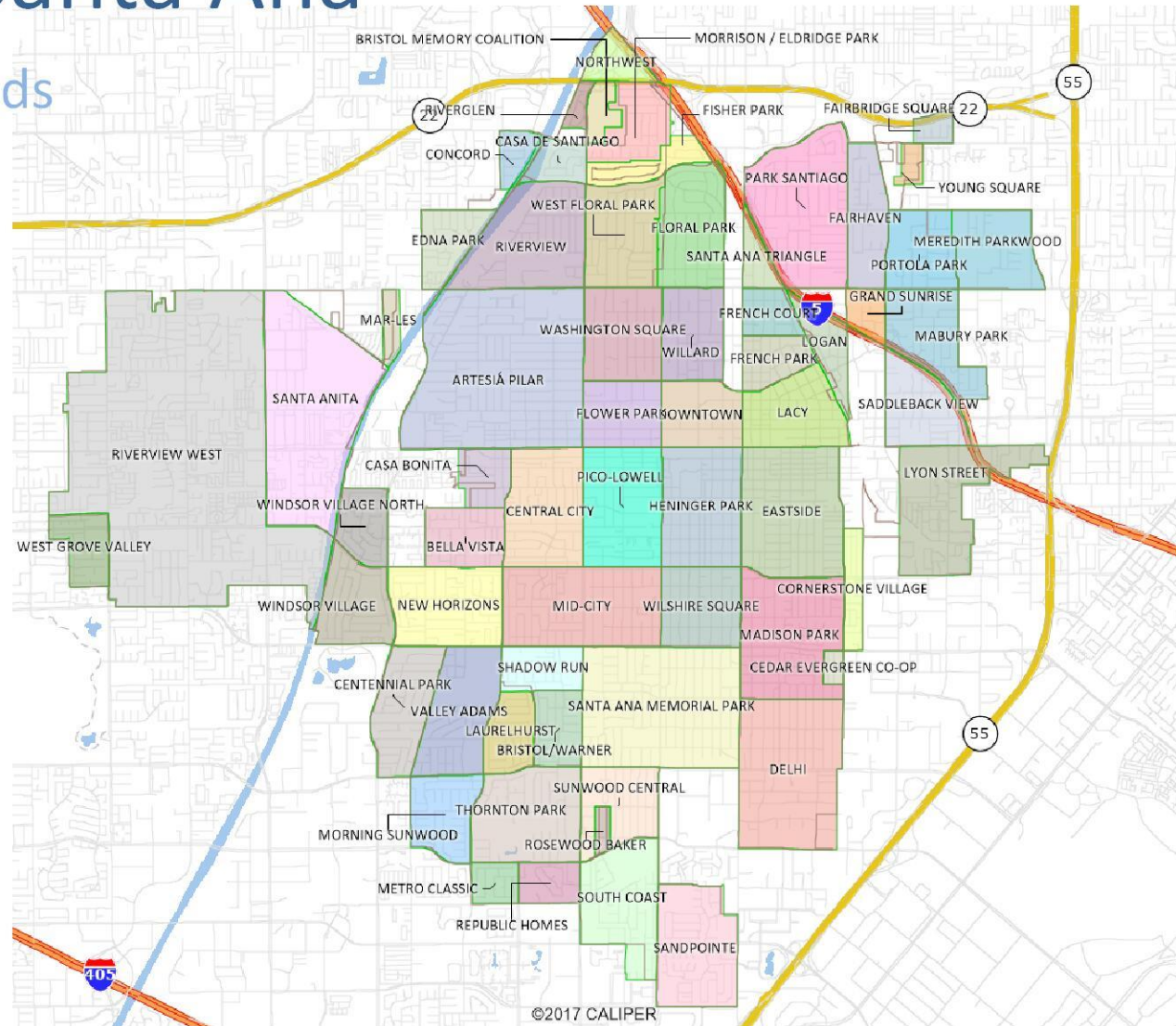
Current Districts

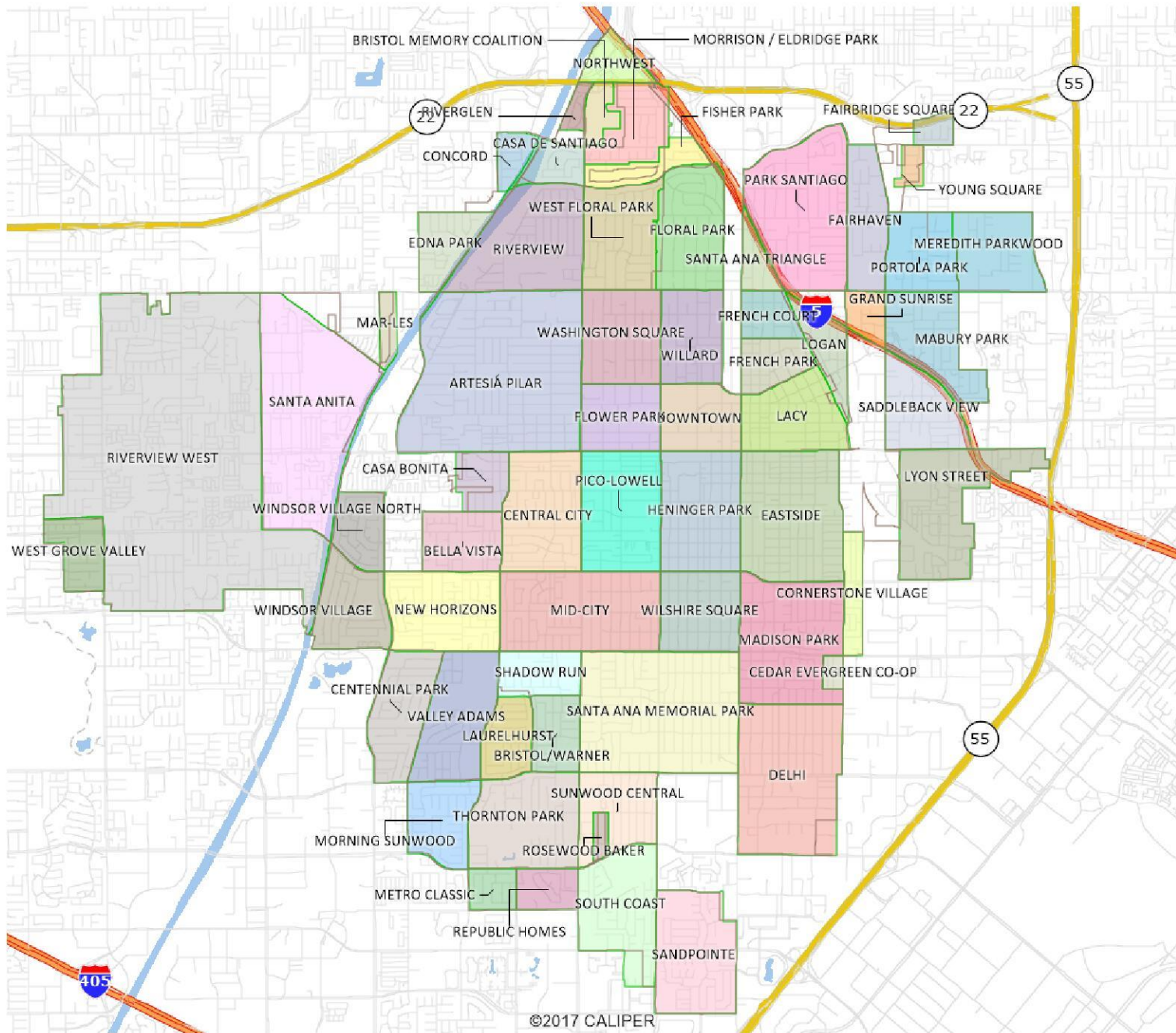




City of Santa Ana

Neighborhoods





	Population	CVAP	CVAP Latino		CVAP Asian	
Artesia Pilar	13,260	5,182	4,272	82%	470	9%
Bella Vista	3,835	908	715	79%	59	6%
Bristol Memory Coalition	2,390	1,297	705	54%	237	18%
Bristol/Warner	2,676	1,005	880	88%	35	3%
Casa Bonita	1,217	277	186	67%	57	21%
Casa De Santiago	709	534	173	32%	50	9%
Cedar Evergreen Co-Op	1,186	368	365	99%	-	0%
Centennial Park	5,023	1,980	1,465	74%	151	8%
Central City	6,227	2,715	2,250	83%	179	7%
Concord	757	435	189	43%	145	33%
Cornerstone Village	5,853	940	770	82%	140	15%
Delhi	7,885	3,544	2,633	74%	146	4%
Downtown	2,486	795	444	56%	194	24%
Eastside	13,026	3,321	2,963	89%	193	6%
Edna Park	1,694	875	415	47%	210	24%
<u>Fairbridge Square</u>	358	275	140	51%	4	1%
Fairhaven	2,399	1,225	855	70%	65	5%
Fisher Park	619	396	203	51%	22	6%
Floral Park	1,762	970	180	19%	82	8%
Flower Park	6,261	3,080	1,605	52%	235	8%
French Court	4,691	799	620	78%	9	1%

	Population	CVAP	CVAP Latino		CVAP Asian	
Artesia Pilar	13,260	5,182	4,272	82%	470	9%
Bella Vista	3,835	908	715	79%	59	6%
Bristol Memory Coalition	2,390	1,297	705	54%	237	18%
Bristol/Warner	2,676	1,005	880	88%	35	3%
Casa Bonita	1,217	277	186	67%	57	21%
Casa De Santiago	709	534	173	32%	50	9%
Cedar Evergreen Co-Op	1,186	368	365	99%	-	0%
Centennial Park	5,023	1,980	1,465	74%	151	8%
Central City	6,227	2,715	2,250	83%	179	7%
Concord	757	435	189	43%	145	33%
Cornerstone Village	5,853	940	770	82%	140	15%
Delhi	7,885	3,544	2,633	74%	146	4%
Downtown	2,486	795	444	56%	194	24%
Eastside	13,026	3,321	2,963	89%	193	6%
Edna Park	1,694	875	415	47%	210	24%
<u>Fairbridge Square</u>	358	275	140	51%	4	1%
Fairhaven	2,399	1,225	855	70%	65	5%
Fisher Park	619	396	203	51%	22	6%
Floral Park	1,762	970	180	19%	82	8%
Flower Park	6,261	3,080	1,605	52%	235	8%
French Court	4,691	799	620	78%	9	1%

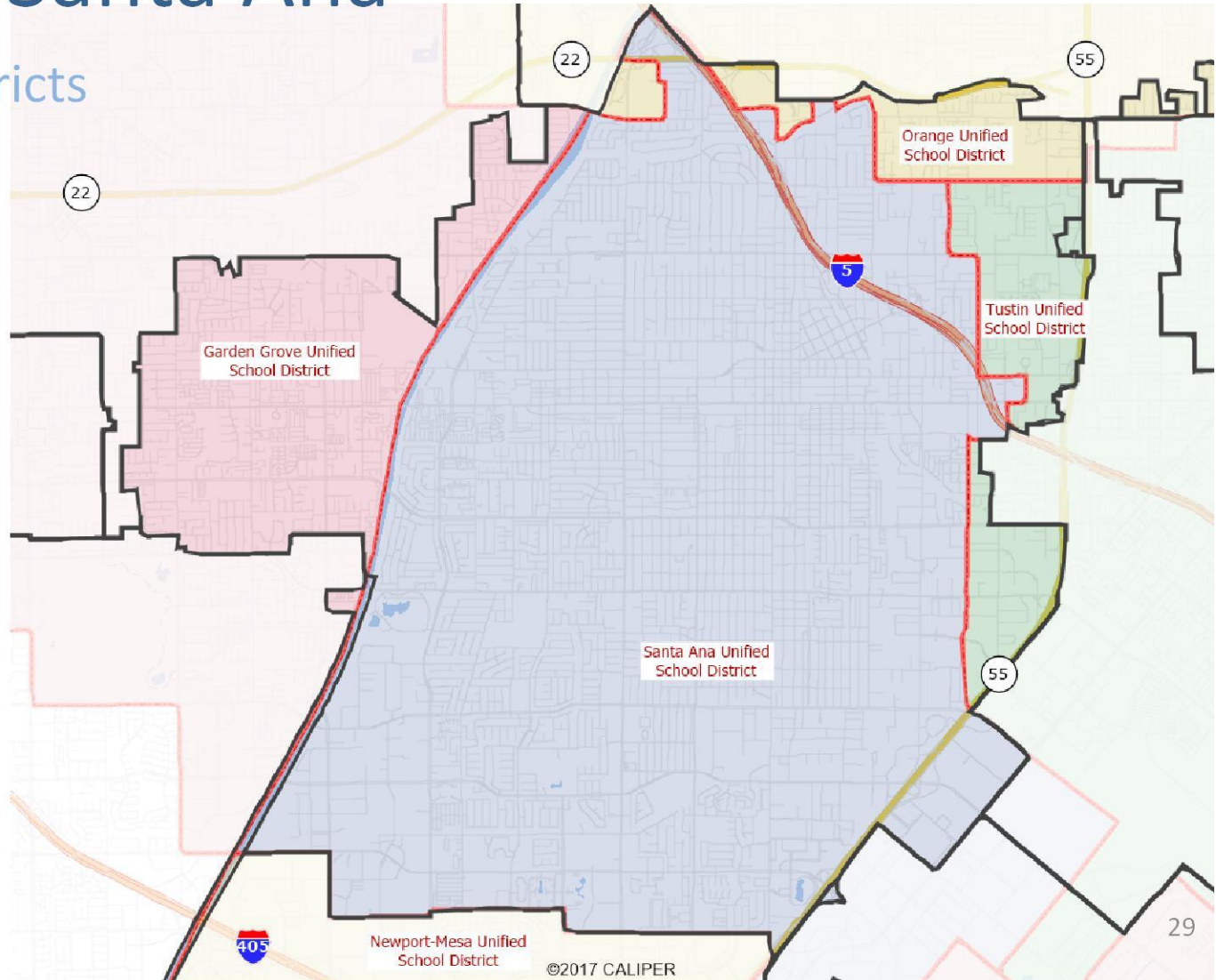
	Population	CVAP	CVAP Latino		CVAP Asian	
Artesia Pilar	13,260	5,182	4,272	82%	470	9%
Bella Vista	3,835	908	715	79%	59	6%
Bristol Memory Coalition	2,390	1,297	705	54%	237	18%
Bristol/Warner	2,676	1,005	880	88%	35	3%
Casa Bonita	1,217	277	186	67%	57	21%
Casa De Santiago	709	534	173	32%	50	9%
Cedar Evergreen Co-Op	1,186	368	365	99%	-	0%
Centennial Park	5,023	1,980	1,465	74%	151	8%
Central City	6,227	2,715	2,250	83%	179	7%
Concord	757	435	189	43%	145	33%
Cornerstone Village	5,853	940	770	82%	140	15%
Delhi	7,885	3,544	2,633	74%	146	4%
Downtown	2,486	795	444	56%	194	24%
Eastside	13,026	3,321	2,963	89%	193	6%
Edna Park	1,694	875	415	47%	210	24%
<u>Fairbridge Square</u>	358	275	140	51%	4	1%
Fairhaven	2,399	1,225	855	70%	65	5%
Fisher Park	619	396	203	51%	22	6%
Floral Park	1,762	970	180	19%	82	8%
Flower Park	6,261	3,080	1,605	52%	235	8%
French Court	4,691	799	620	78%	9	1%

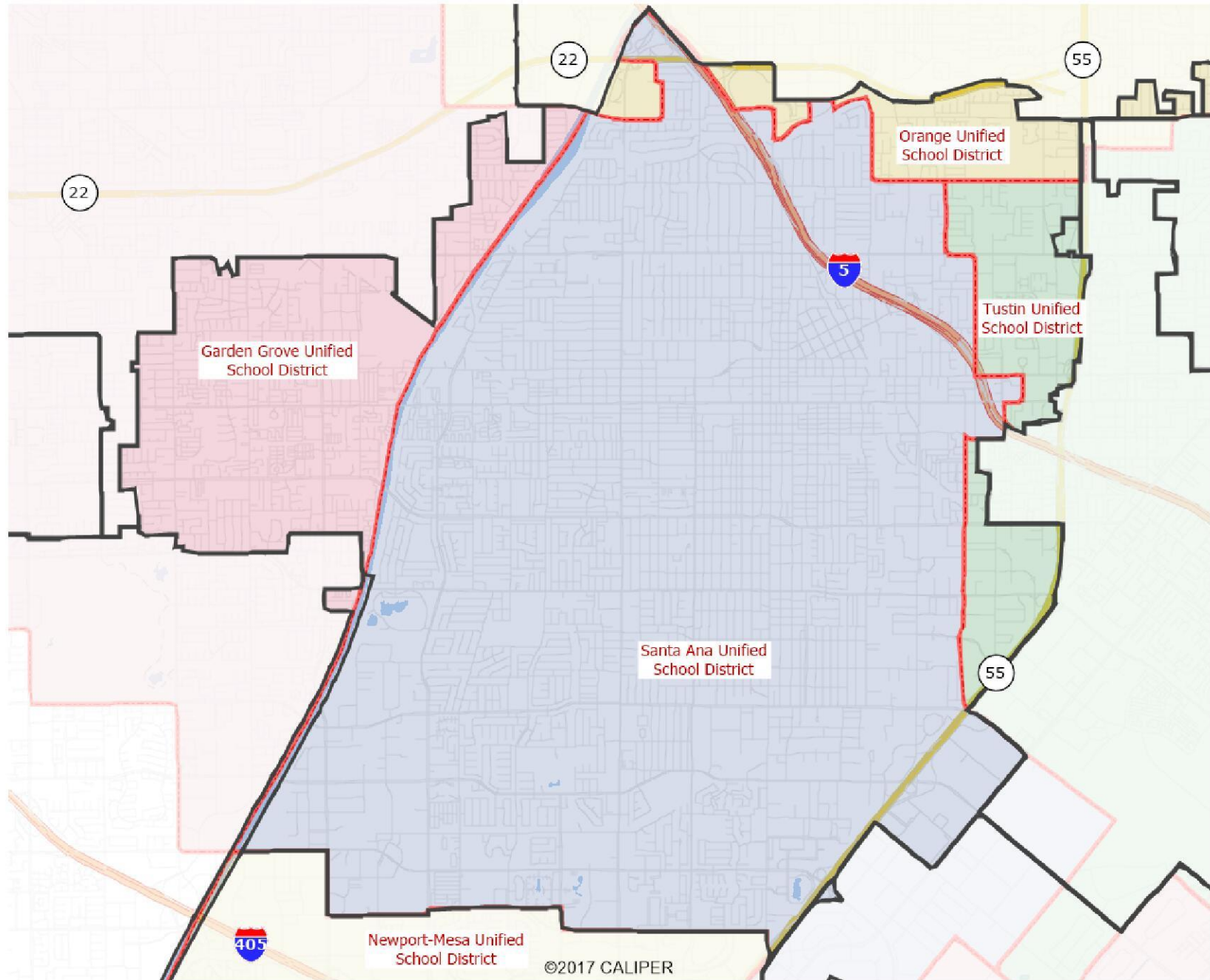
	Population	CVAP	CVAP Latino		CVAP Asian	
Artesia Pilar	13,260	5,182	4,272	82%	470	9%
Bella Vista	3,835	908	715	79%	59	6%
Bristol Memory Coalition	2,390	1,297	705	54%	237	18%
Bristol/Warner	2,676	1,005	880	88%	35	3%
Casa Bonita	1,217	277	186	67%	57	21%
Casa De Santiago	709	534	173	32%	50	9%
Cedar Evergreen Co-Op	1,186	368	365	99%	-	0%
Centennial Park	5,023	1,980	1,465	74%	151	8%
Central City	6,227	2,715	2,250	83%	179	7%
Concord	757	435	189	43%	145	33%
Cornerstone Village	5,853	940	770	82%	140	15%
Delhi	7,885	3,544	2,633	74%	146	4%
Downtown	2,486	795	444	56%	194	24%
Eastside	13,026	3,321	2,963	89%	193	6%
Edna Park	1,694	875	415	47%	210	24%
<u>Fairbridge Square</u>	358	275	140	51%	4	1%
Fairhaven	2,399	1,225	855	70%	65	5%
Fisher Park	619	396	203	51%	22	6%
Floral Park	1,762	970	180	19%	82	8%
Flower Park	6,261	3,080	1,605	52%	235	8%
French Court	4,691	799	620	78%	9	1%

	Population	CVAP	CVAP Latino		CVAP Asian	
Artesia Pilar	13,260	5,182	4,272	82%	470	9%
Bella Vista	3,835	908	715	79%	59	6%
Bristol Memory Coalition	2,390	1,297	705	54%	237	18%
Bristol/Warner	2,676	1,005	880	88%	35	3%
Casa Bonita	1,217	277	186	67%	57	21%
Casa De Santiago	709	534	173	32%	50	9%
Cedar Evergreen Co-Op	1,186	368	365	99%	-	0%
Centennial Park	5,023	1,980	1,465	74%	151	8%
Central City	6,227	2,715	2,250	83%	179	7%
Concord	757	435	189	43%	145	33%
Cornerstone Village	5,853	940	770	82%	140	15%
Delhi	7,885	3,544	2,633	74%	146	4%
Downtown	2,486	795	444	56%	194	24%
Eastside	13,026	3,321	2,963	89%	193	6%
Edna Park	1,694	875	415	47%	210	24%
<u>Fairbridge Square</u>	358	275	140	51%	4	1%
Fairhaven	2,399	1,225	855	70%	65	5%
Fisher Park	619	396	203	51%	22	6%
Floral Park	1,762	970	180	19%	82	8%
Flower Park	6,261	3,080	1,605	52%	235	8%
French Court	4,691	799	620	78%	9	1%

City of Santa Ana

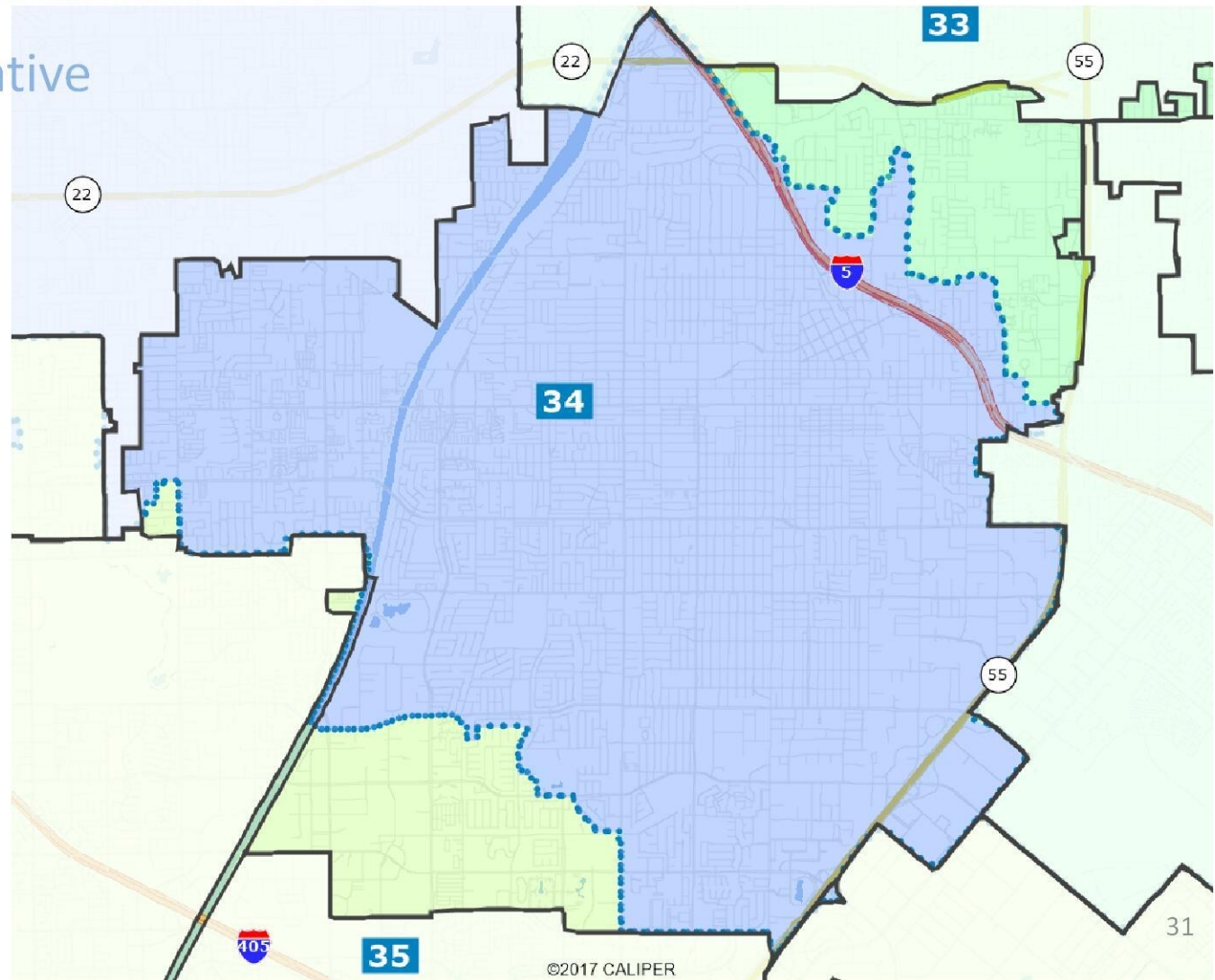
School Districts

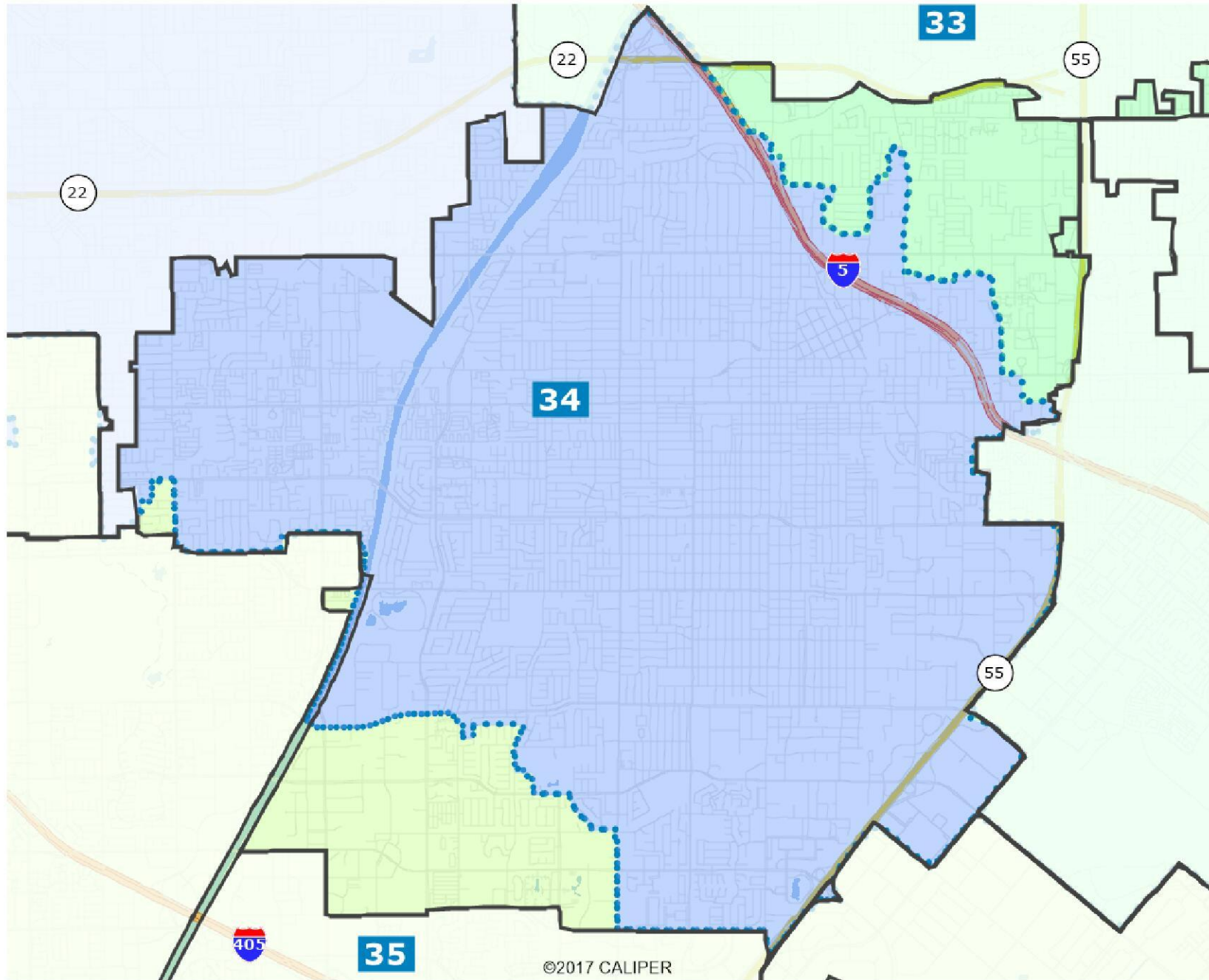




City of Santa Ana

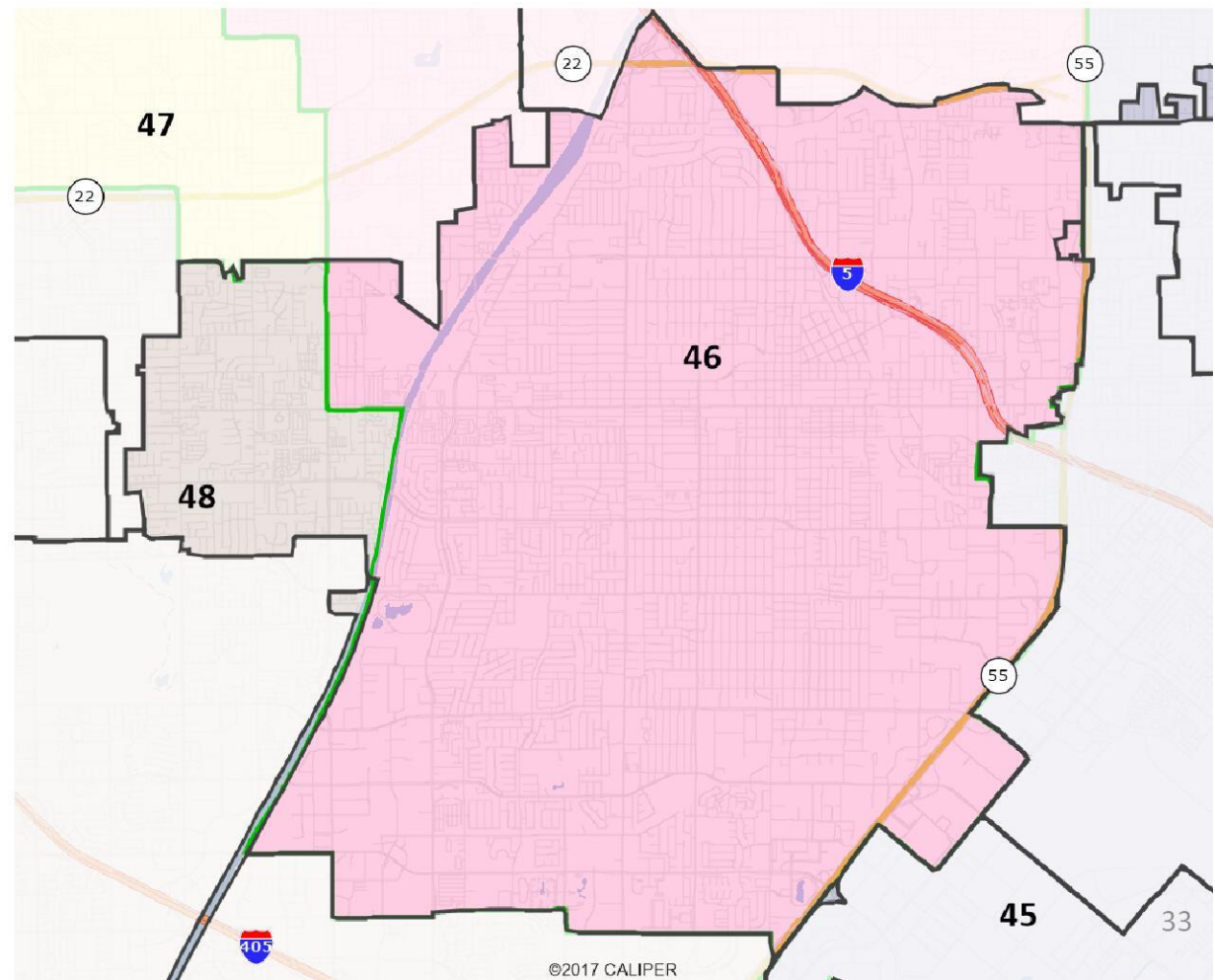
State Legislative

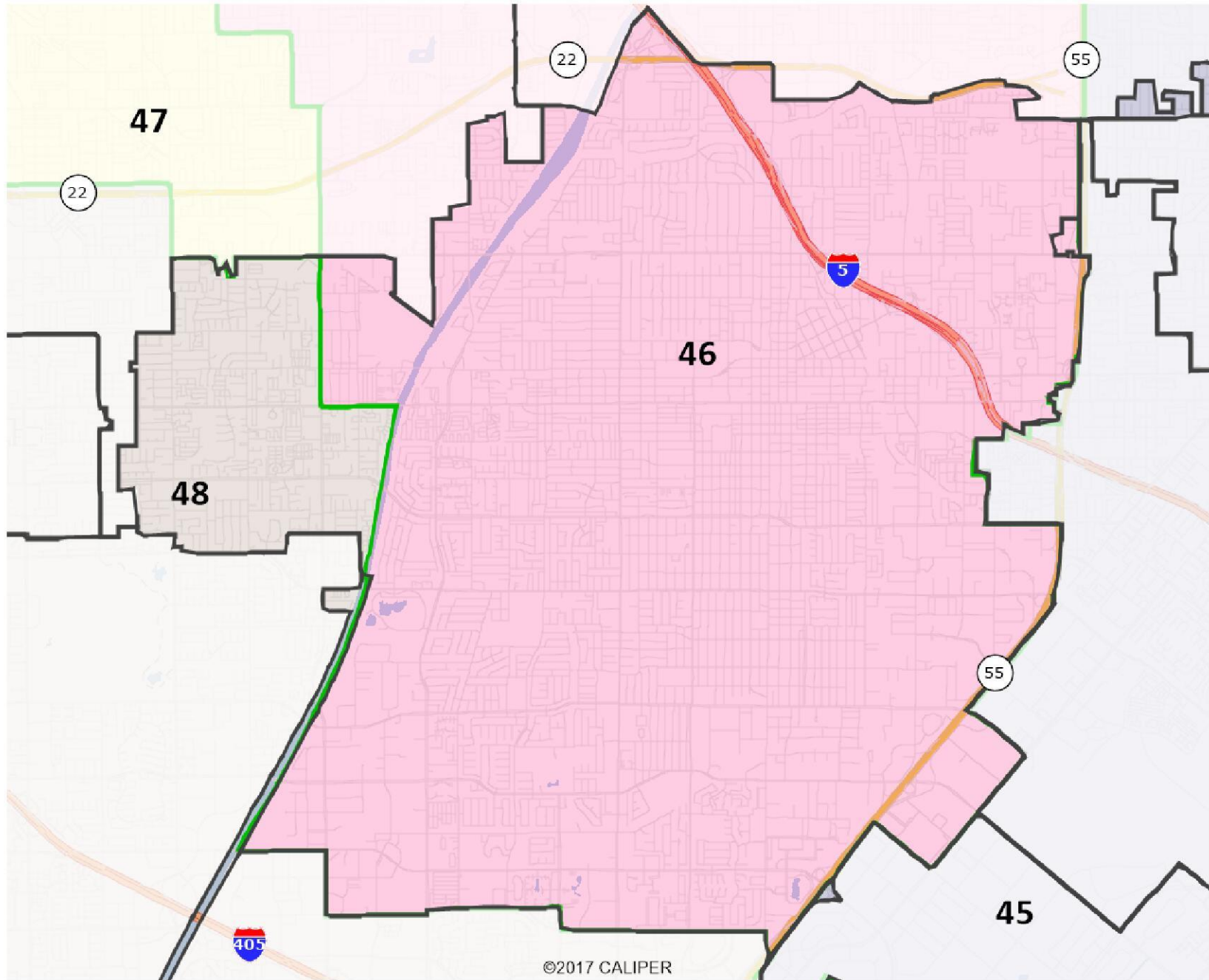




City of Santa Ana

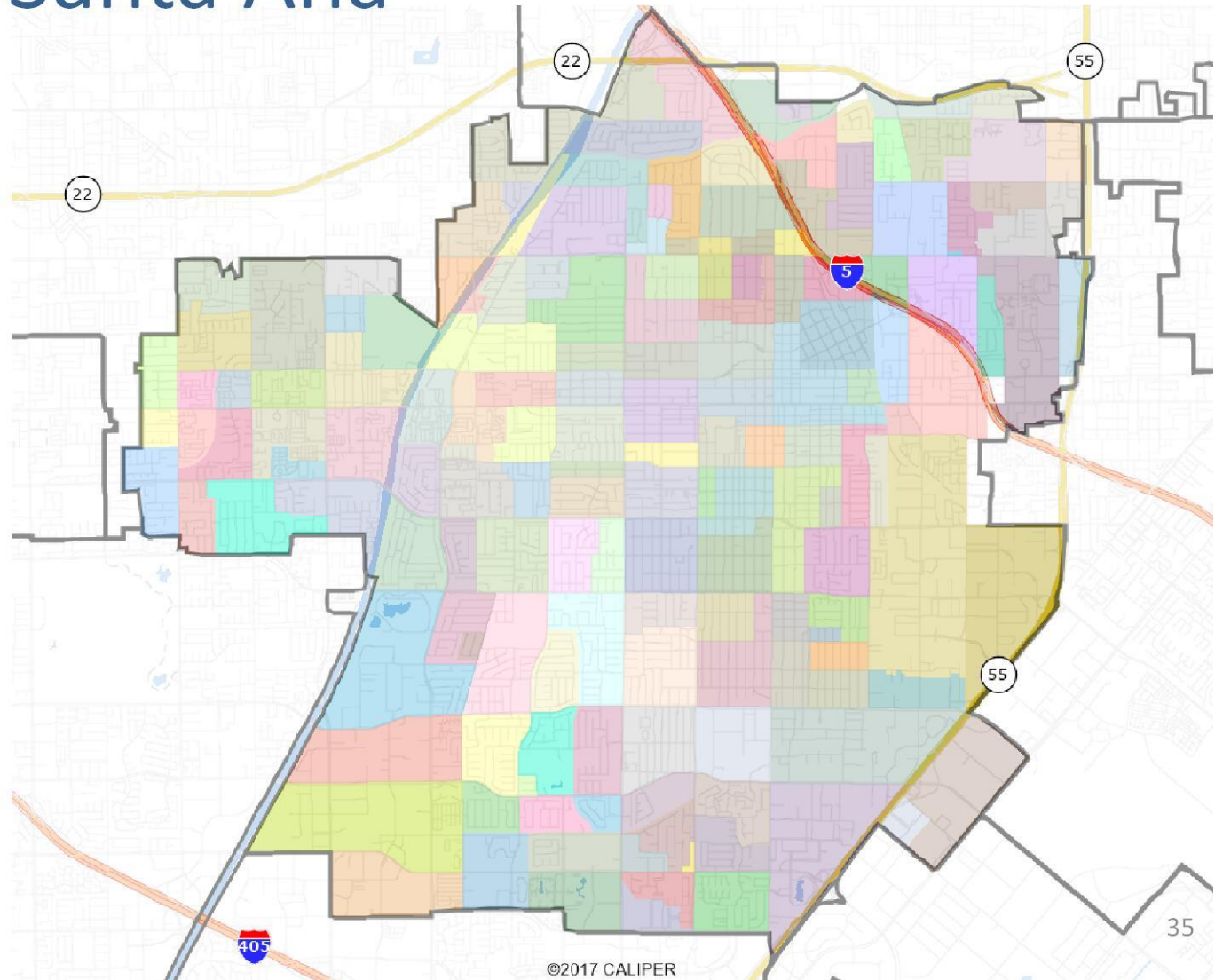
Congressional

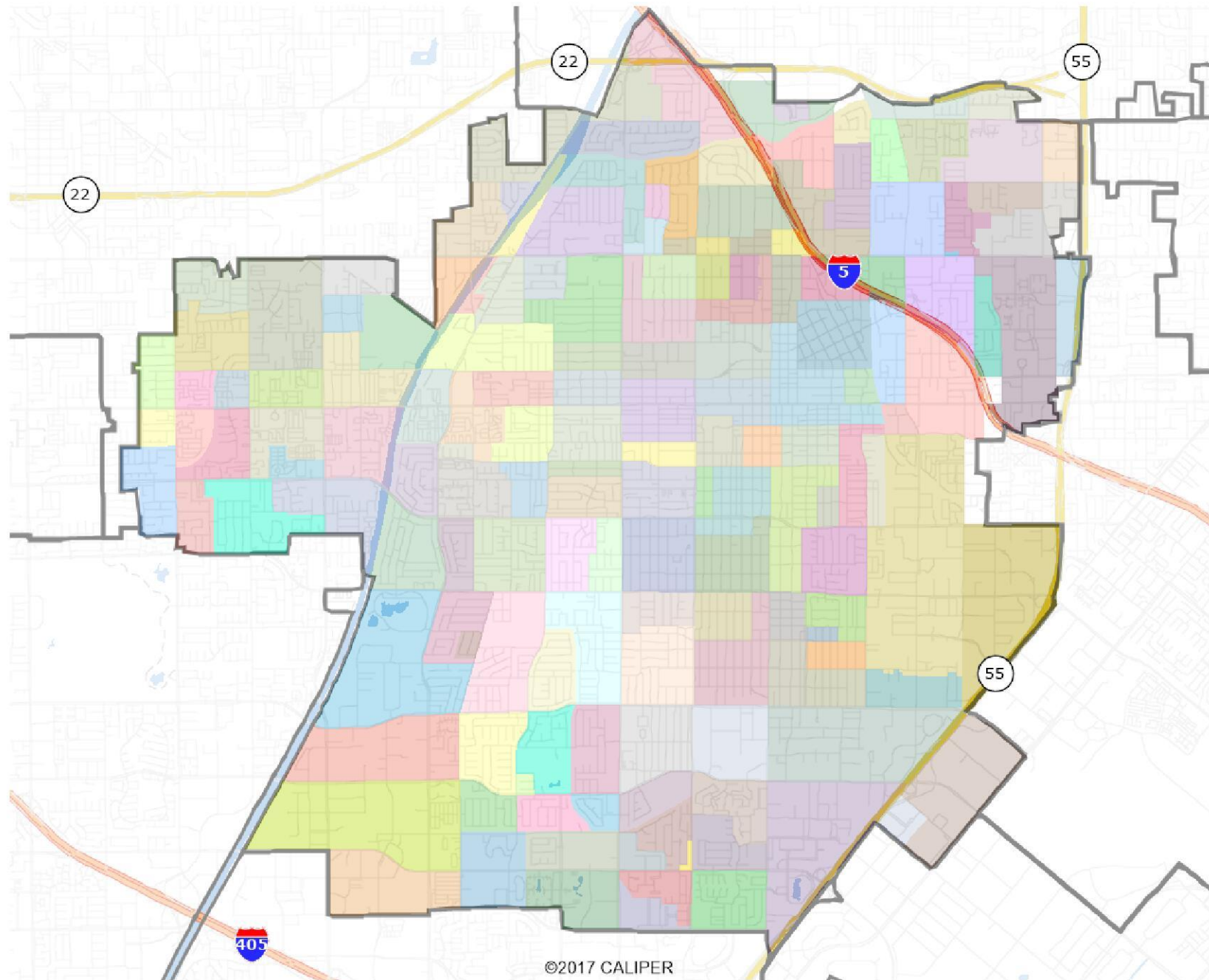




City of Santa Ana

Precincts

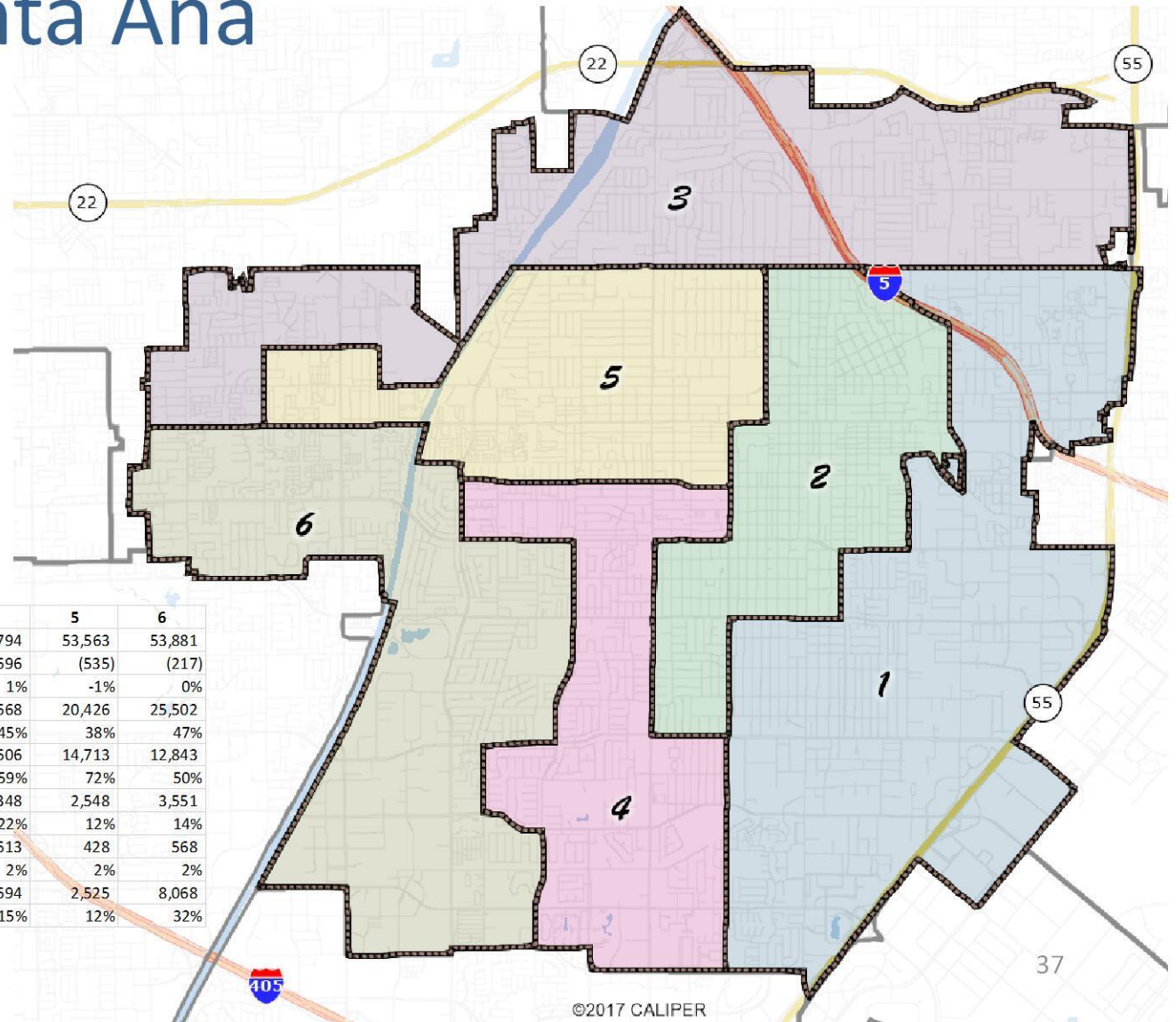




©2017 CALIPER

City of Santa Ana

Current Lines



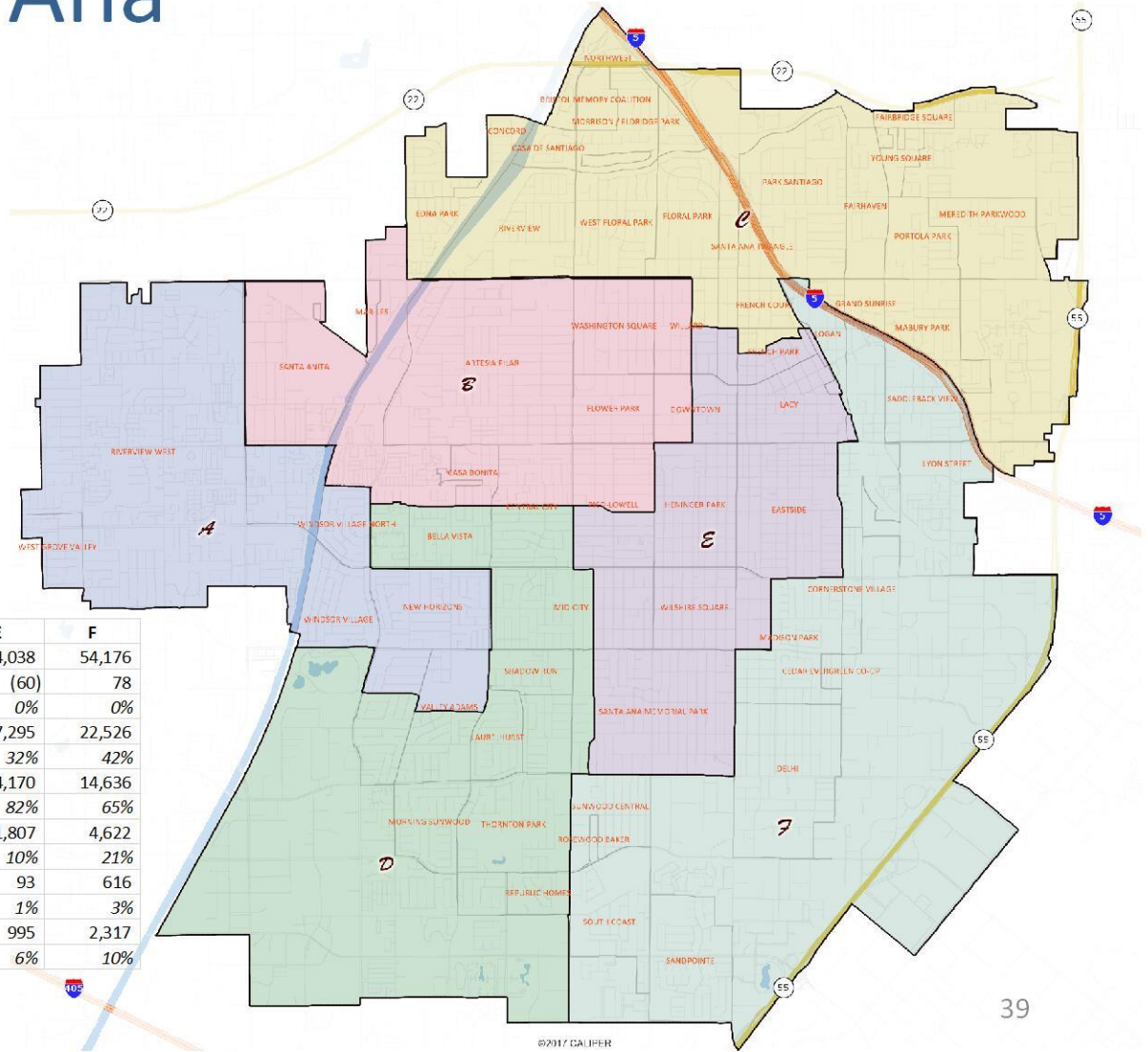
Current Lines	1	2	3	4	5	6
Population	53,095	54,480	54,772	54,794	53,563	53,881
Deviation	(1,003)	382	674	696	(535)	(217)
	-2%	1%	1%	1%	-1%	0%
18+ Citizens (CVAP)	22,613	16,410	30,800	24,668	20,426	25,502
	43%	30%	56%	45%	38%	47%
Latino CVAP	14,944	13,103	13,853	14,606	14,713	12,843
	66%	80%	45%	59%	72%	50%
White CVAP	4,743	1,947	9,260	5,348	2,548	3,551
	21%	12%	30%	22%	12%	14%
African American CVAP	485	148	316	613	428	568
	2%	1%	1%	2%	2%	2%
Asian CVAP	2,187	1,003	6,897	3,694	2,525	8,068
	10%	6%	22%	15%	12%	32%

Current Lines	1	2	3	4	5	6
Population	53,095	54,480	54,772	54,794	53,563	53,881
Deviation	(1,003)	382	674	696	(535)	(217)
	-2%	1%	1%	1%	-1%	0%
18+ Citizens (CVAP)	22,613	16,410	30,800	24,668	20,426	25,502
	43%	30%	56%	45%	38%	47%
Latino CVAP	14,944	13,103	13,853	14,606	14,713	12,843
	66%	80%	45%	59%	72%	50%
White CVAP	4,743	1,947	9,260	5,348	2,548	3,551
	21%	12%	30%	22%	12%	14%
African American CVAP	485	148	316	613	428	568
	2%	1%	1%	2%	2%	2%
Asian CVAP	2,187	1,003	6,897	3,694	2,525	8,068
	10%	6%	22%	15%	12%	32%

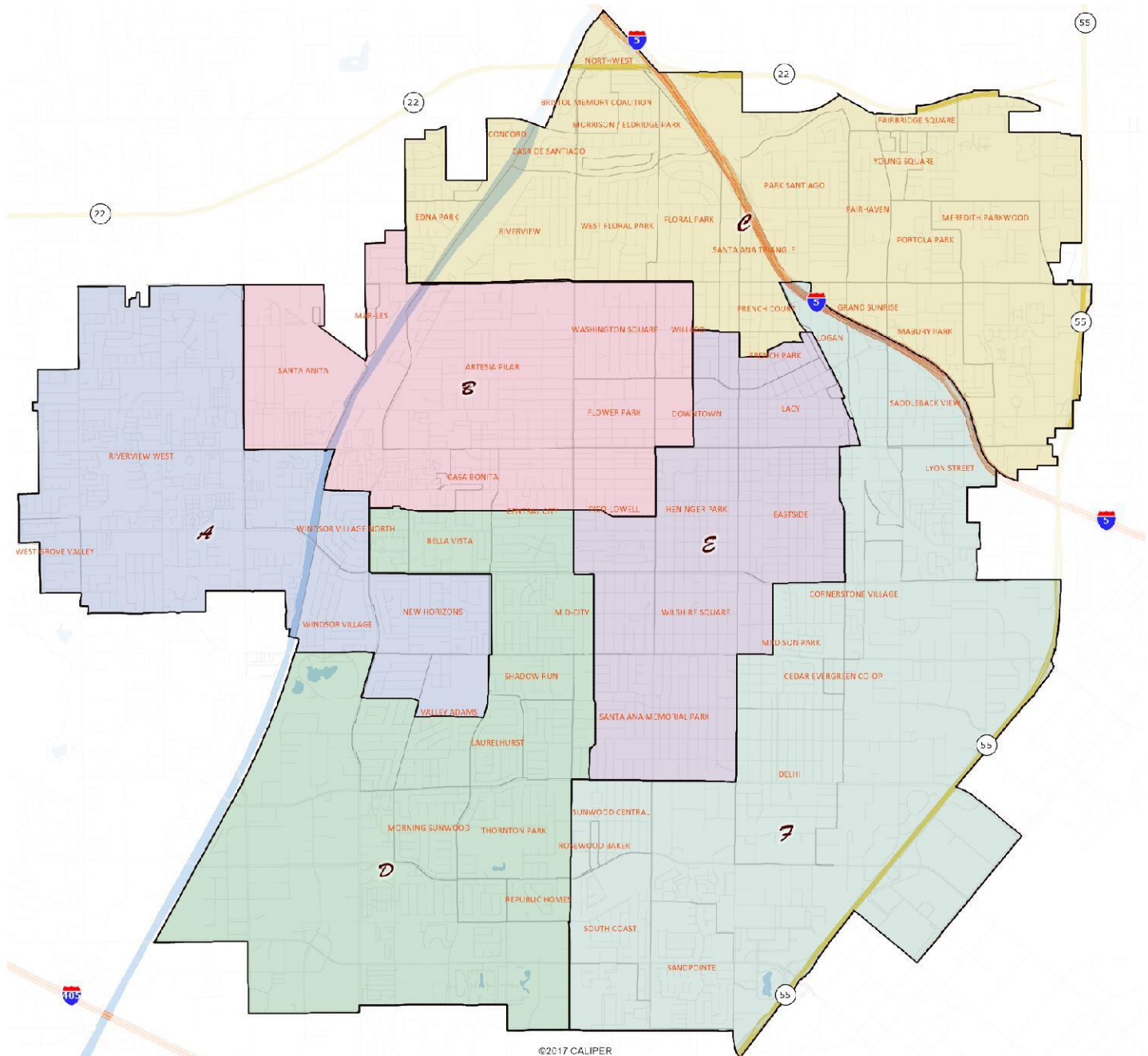
City of Santa Ana

Plan A

PLAN A	A	B	C	D	E	F
Population	54,539	54,399	53,751	53,680	54,038	54,176
Deviation	441	301	(347)	(418)	(60)	78
	1%	1%	-1%	-1%	0%	0%
18+ Citizens (CVAP)	27,031	20,808	27,179	25,585	17,295	22,526
	50%	38%	51%	48%	32%	42%
Latino CVAP	11,893	15,300	13,168	14,900	14,170	14,636
	44%	74%	48%	58%	82%	65%
White CVAP	2,915	2,345	10,335	5,373	1,807	4,622
	11%	11%	38%	21%	10%	21%
African American CVAP	263	444	394	748	93	616
	1%	2%	1%	3%	1%	3%
Asian CVAP	11,494	2,525	2,776	4,267	995	2,317
	43%	12%	10%	17%	6%	10%

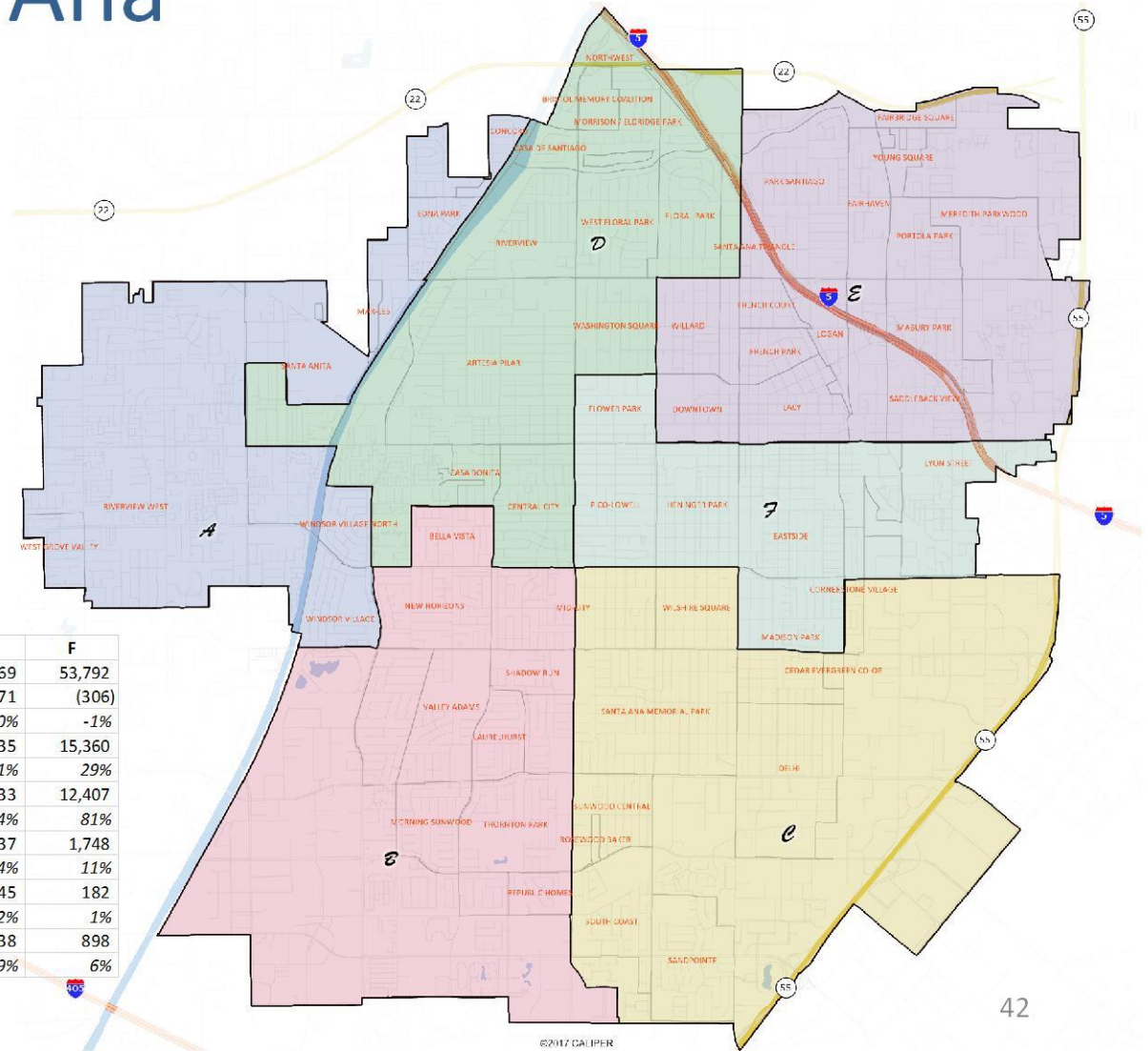


PLAN A	A	B	C	D	E	F
Population	54,539	54,399	53,751	53,680	54,038	54,176
Deviation	441	301	(347)	(418)	(60)	78
	1%	1%	-1%	-1%	0%	0%
18+ Citizens (CVAP)	27,031	20,808	27,179	25,585	17,295	22,526
	50%	38%	51%	48%	32%	42%
Latino CVAP	11,893	15,300	13,168	14,900	14,170	14,636
	44%	74%	48%	58%	82%	65%
White CVAP	2,915	2,345	10,335	5,373	1,807	4,622
	11%	11%	38%	21%	10%	21%
African American CVAP	263	444	394	748	93	616
	1%	2%	1%	3%	1%	3%
Asian CVAP	11,494	2,525	2,776	4,267	995	2,317
	43%	12%	10%	17%	6%	10%



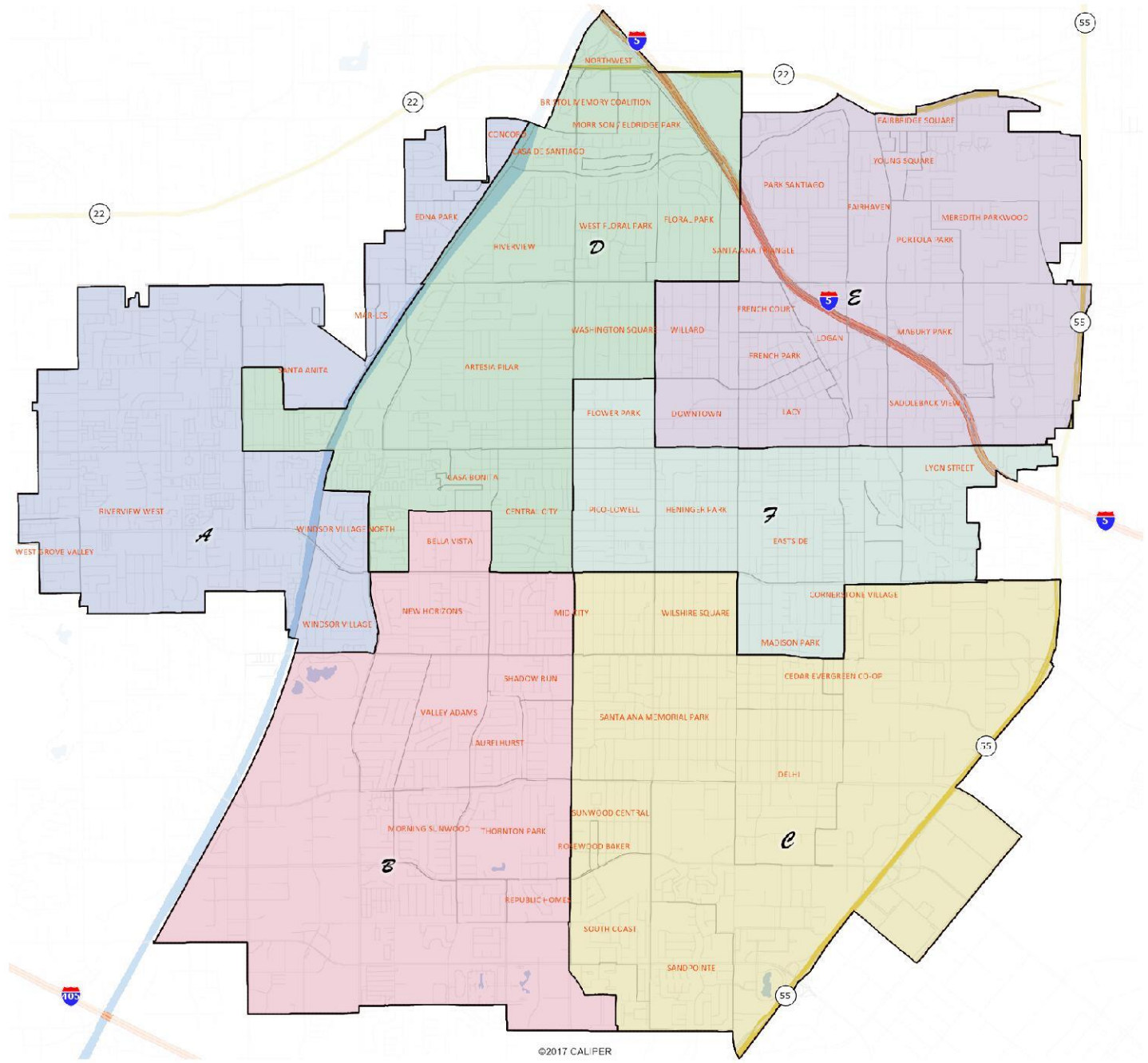
City of Santa Ana

Plan B



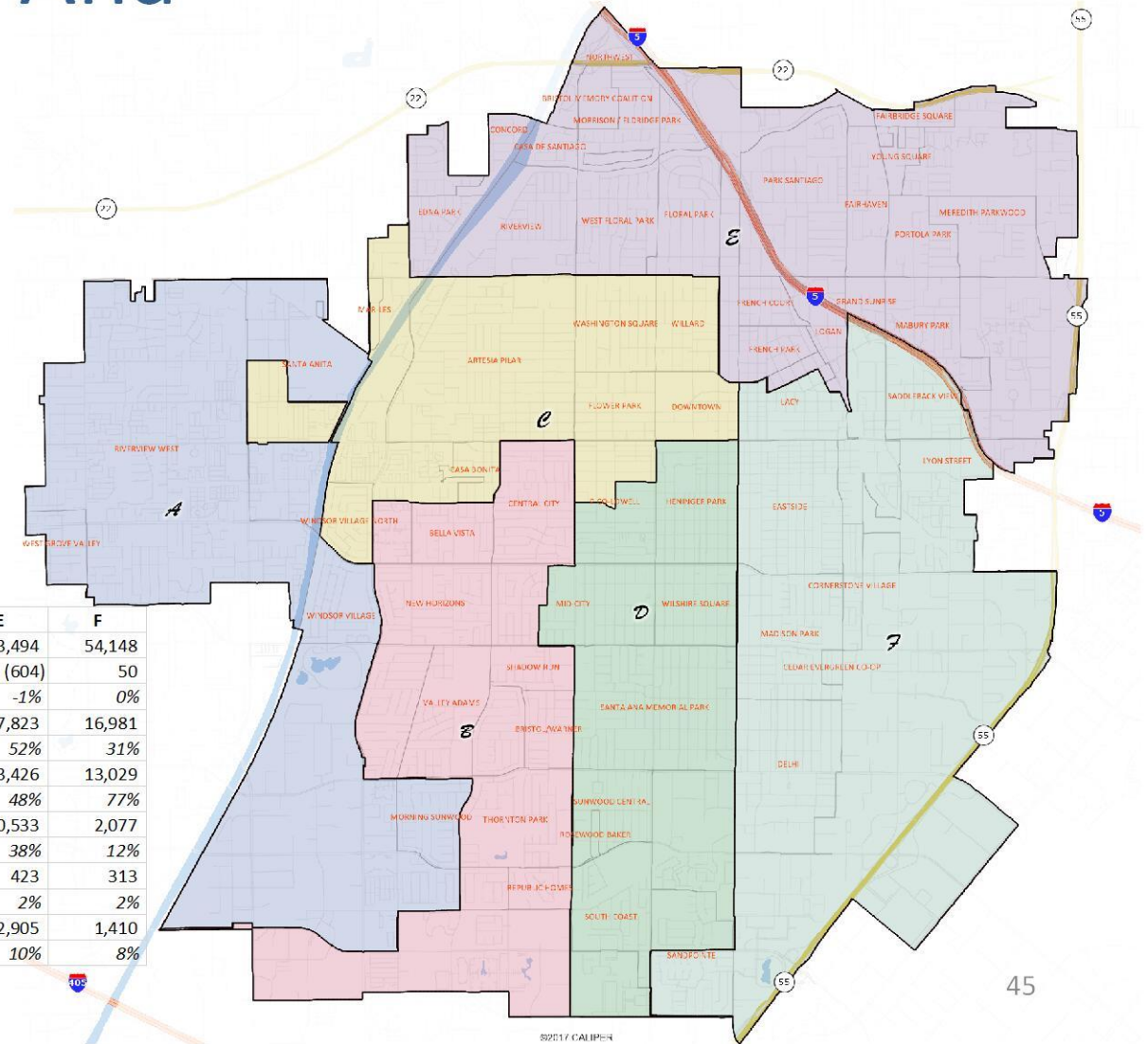
PLAN B	A	B	C	D	E	F
Population	53,864	54,497	54,367	53,794	54,269	53,792
Deviation	(234)	399	269	(304)	171	(306)
	0%	1%	0%	-1%	0%	-1%
18+ Citizens (CVAP)	27,760	26,316	26,164	22,589	22,235	15,360
	52%	48%	48%	42%	41%	29%
Latino CVAP	11,212	15,234	17,814	15,467	11,933	12,407
	40%	58%	68%	68%	54%	81%
White CVAP	3,216	5,529	5,061	4,200	7,637	1,748
	12%	21%	19%	19%	34%	11%
African American CVAP	269	751	508	393	445	182
	1%	3%	2%	2%	2%	1%
Asian CVAP	12,482	4,486	2,407	2,163	1,938	898
	45%	17%	9%	10%	9%	6%

PLAN B	A	B	C	D	E	F
Population	53,864	54,497	54,367	53,794	54,269	53,792
Deviation	(234)	399	269	(304)	171	(306)
	0%	1%	0%	-1%	0%	-1%
18+ Citizens (CVAP)	27,760	26,316	26,164	22,589	22,235	15,360
	52%	48%	48%	42%	41%	29%
Latino CVAP	11,212	15,234	17,814	15,467	11,933	12,407
	40%	58%	68%	68%	54%	81%
White CVAP	3,216	5,529	5,061	4,200	7,637	1,748
	12%	21%	19%	19%	34%	11%
African American CVAP	269	751	508	393	445	182
	1%	3%	2%	2%	2%	1%
Asian CVAP	12,482	4,486	2,407	2,163	1,938	898
	45%	17%	9%	10%	9%	6%



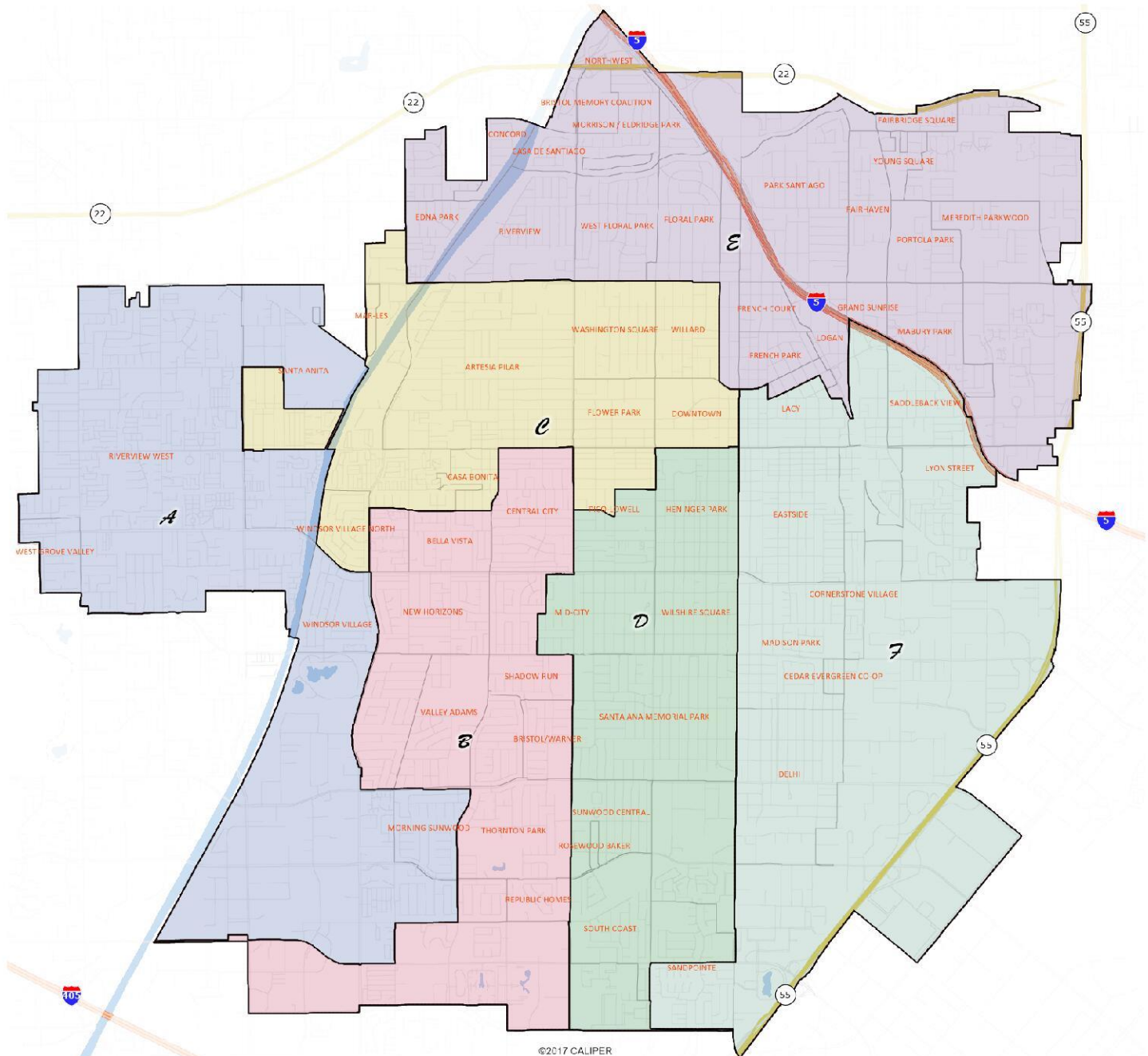
City of Santa Ana

Plan C



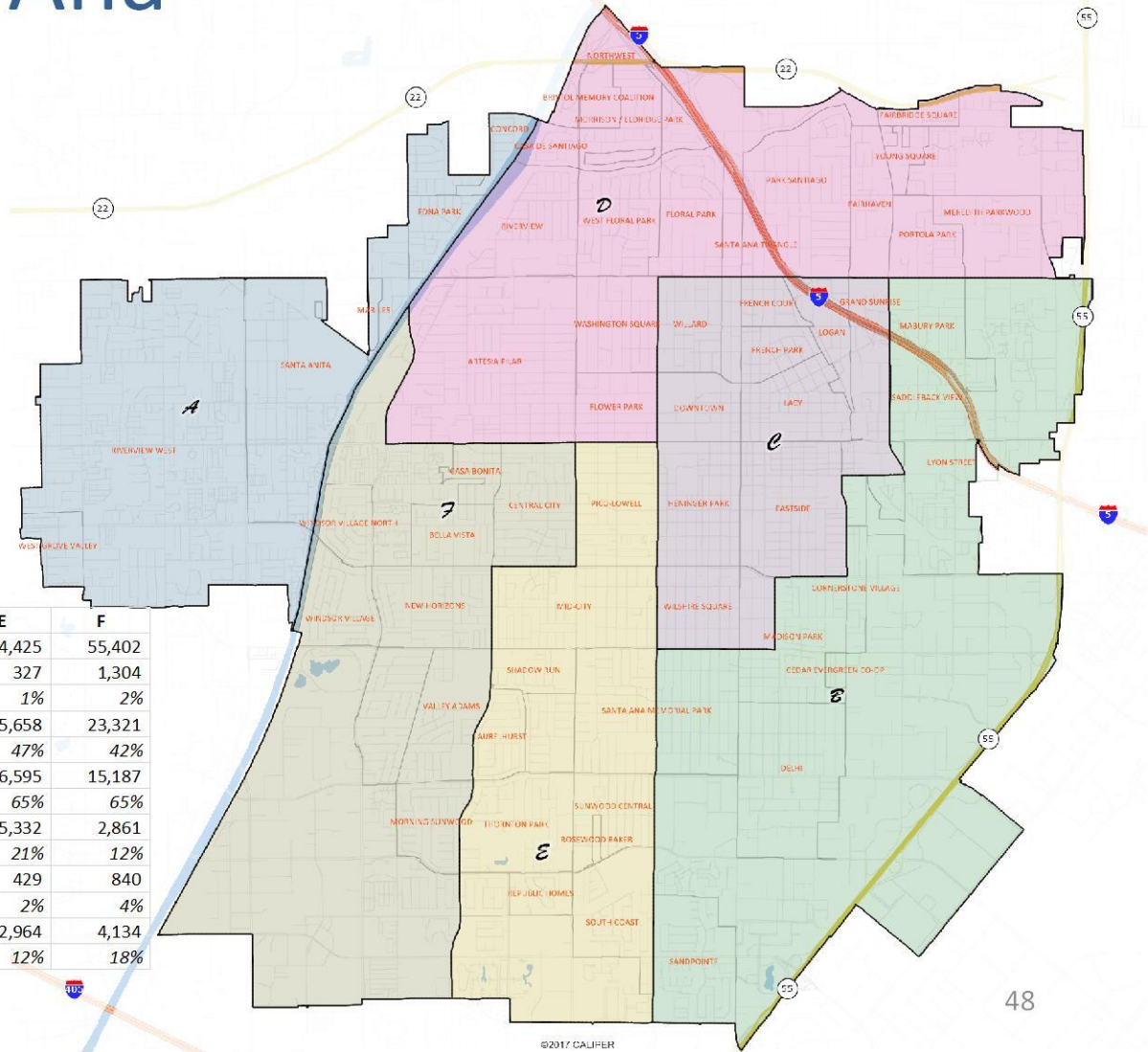
PLAN C	A	B	C	D	E	F
Population	53,852	53,158	55,083	54,848	53,494	54,148
Deviation	(246) 0%	(940) -2%	985 2%	750 1%	(604) -1%	50 0%
18+ Citizens (CVAP)	29,015 54%	23,568 44%	20,253 37%	22,779 42%	27,823 52%	16,981 31%
Latino CVAP	11,277 39%	15,473 66%	14,647 72%	16,220 71%	13,426 48%	13,029 77%
White CVAP	4,012 14%	4,101 17%	2,507 12%	4,161 18%	10,533 38%	2,077 12%
African American CVAP	283 1%	712 3%	487 2%	330 1%	423 2%	313 2%
Asian CVAP	12,846 44%	3,057 13%	2,450 12%	1,706 7%	2,905 10%	1,410 8%

PLAN C	A	B	C	D	E	F
Population	53,852	53,158	55,083	54,848	53,494	54,148
Deviation	(246)	(940)	985	750	(604)	50
	0%	-2%	2%	1%	-1%	0%
18+ Citizens (CVAP)	29,015	23,568	20,253	22,779	27,823	16,981
	54%	44%	37%	42%	52%	31%
Latino CVAP	11,277	15,473	14,647	16,220	13,426	13,029
	39%	66%	72%	71%	48%	77%
White CVAP	4,012	4,101	2,507	4,161	10,533	2,077
	14%	17%	12%	18%	38%	12%
African American CVAP	283	712	487	330	423	313
	1%	3%	2%	1%	2%	2%
Asian CVAP	12,846	3,057	2,450	1,706	2,905	1,410
	44%	13%	12%	7%	10%	8%



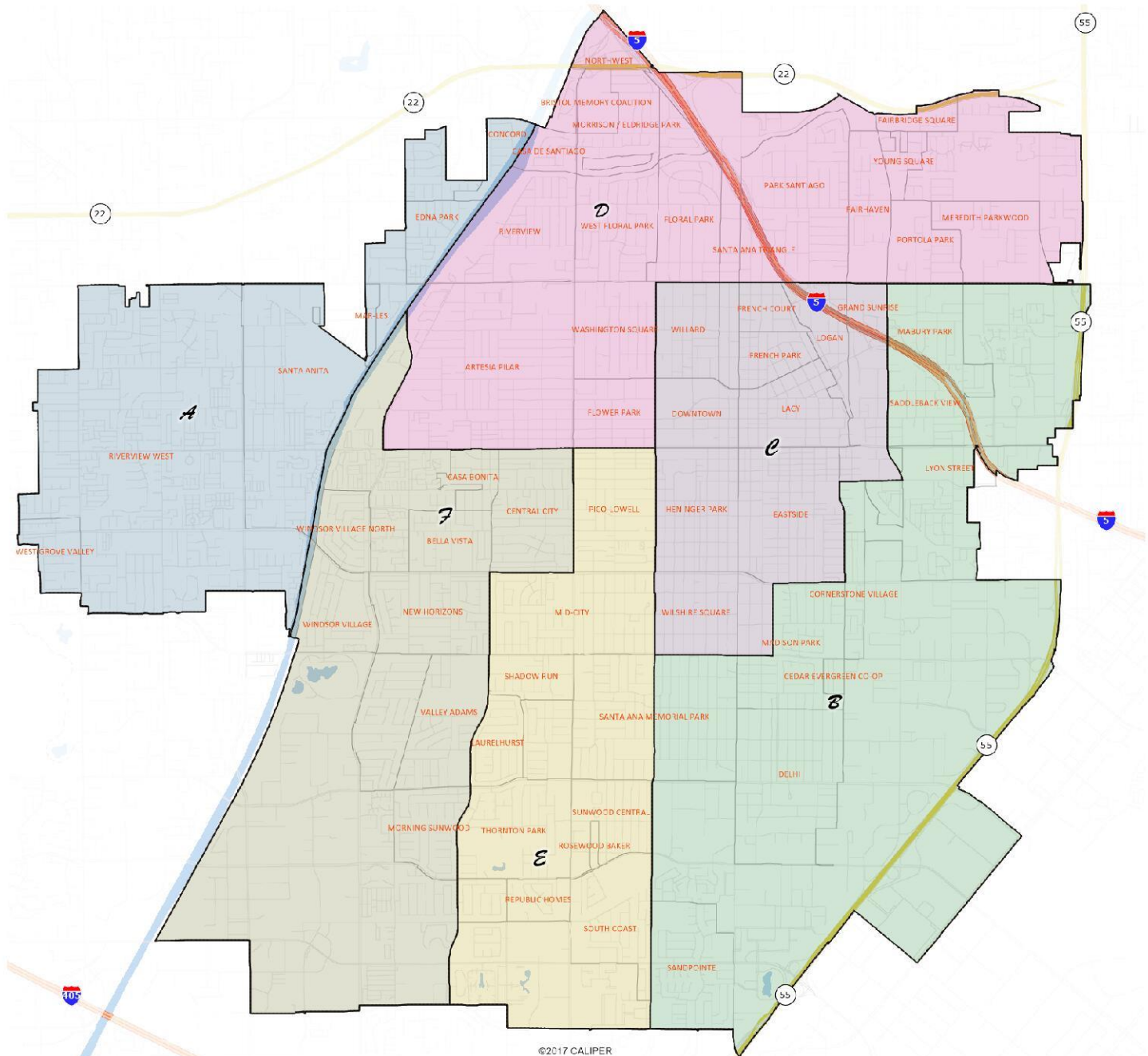
City of Santa Ana

Plan D



PLAN D	A	B	C	D	E	F
Population	53,515	52,395	52,744	56,104	54,425	55,402
Deviation	(583)	(1,703)	(1,354)	2,006	327	1,304
	-1%	-3%	-3%	4%	1%	2%
18+ Citizens (CVAP)	26,472	22,302	14,018	28,648	25,658	23,321
	49%	43%	27%	51%	47%	42%
Latino CVAP	10,813	14,772	10,901	15,789	16,595	15,187
	41%	66%	78%	55%	65%	65%
White CVAP	3,058	4,651	1,799	9,696	5,332	2,861
	12%	21%	13%	34%	21%	12%
African American CVAP	193	459	193	444	429	840
	1%	2%	1%	2%	2%	4%
Asian CVAP	11,776	2,182	964	2,354	2,964	4,134
	44%	10%	7%	8%	12%	18%

PLAN D	A	B	C	D	E	F
Population	53,515	52,395	52,744	56,104	54,425	55,402
Deviation	(583)	(1,703)	(1,354)	2,006	327	1,304
	-1%	-3%	-3%	4%	1%	2%
18+ Citizens (CVAP)	26,472	22,302	14,018	28,648	25,658	23,321
	49%	43%	27%	51%	47%	42%
Latino CVAP	10,813	14,772	10,901	15,789	16,595	15,187
	41%	66%	78%	55%	65%	65%
White CVAP	3,058	4,651	1,799	9,696	5,332	2,861
	12%	21%	13%	34%	21%	12%
African American CVAP	193	459	193	444	429	840
	1%	2%	1%	2%	2%	4%
Asian CVAP	11,776	2,182	964	2,354	2,964	4,134
	44%	10%	7%	8%	12%	18%





REDISTRICTING PARTNERS