

October 13, 2020

Ivan Orozco  
City of Santa Ana  
20 Civic Center Plaza, Ross Annex M-20  
Santa Ana, CA 92701

**Re: Community Meeting**  
**2202 E. 1<sup>st</sup> Street, Santa Ana, CA (APN: 402-181-04)**

Dear Mr. Orozco,

I am providing this affidavit, under penalty of perjury, and its associate attachments to verify that AMG has satisfied the requirements of the City of Santa Ana's Sunshine Ordinance.

AMG submitted an entitlements package on August 18<sup>th</sup>, 2020 to the City of Santa Ana for administrative site plan review for its proposed development at 2202 E. First St, Santa Ana, CA. In compliance with the Sunshine Ordinance a community meeting was held on October 13<sup>th</sup> through a virtual meeting.

Prior to the meeting AMG notified the community:

- 1) Mailing notices, in both English and Spanish, were sent to all commercial and residential owners and tenants with a valid United States Postal Service address within a 500-foot radius of the subject property;
- 2) The same notice was posted at the development project site in the existing motel building; and
- 3) Published the notice in the OC Reporter on October 2<sup>nd</sup>, 2020. A digital copy of the notice was provided to the City and was subsequently posted to the City's website.

Detailed meeting minutes were recorded for the Community Meeting and are provided as an attachment to this affidavit. All public comment inquiries were responded to during the meeting.

Should you have any additional questions, please contact Kimberly Calica at (818) 380-2600 Ext. 17 or [kcalica@amgland.com](mailto:kcalica@amgland.com).

Sincerely,



Kimberly Calica

Attachments:

1. Community Notice
2. Photo of Notice on Property
3. Notification List
4. OC Reporter-Copy of Publication
5. Meeting Minutes & Public Comments



## **AMG & Associates, LLC.**

**Cordially invites you to a community information meeting for:**

2202 E. 1<sup>st</sup> Street Apartments  
*An Affordable Housing Development*  
at 2202 E. 1<sup>st</sup> Street, Santa Ana, CA 92701



*The proposed project of 2202 E. 1<sup>st</sup> Street Apartments is highlighted in blue.*

In an effort to protect public health and prevent the spread of COVID-19 (Coronavirus), please virtually attend and share your thoughts and ideas about this new affordable housing development. During the meeting, we will provide general information, answer questions and solicit input on the development proposal.

**MEETING DATE AND TIME**  
**October 13<sup>th</sup>, 2020 – 5pm-6pm**

**MEETING LOCATION: Meeting to be held virtually.**  
**RSVP by Friday, October 9<sup>th</sup>**  
**for detailed information**

2202 E. 1<sup>st</sup> Street Apartments will be a new affordable residential development. Please come and share your thoughts and ideas about this new rental housing development. At the meeting we will provide general information, answer questions and solicit input on the housing proposal.

If you have questions regarding this event or you require language interpretation services in languages other than English, please contact:  
Kimberly Calica at (818) 380-2600 Ext. 17 or [kcalica@amgland.com](mailto:kcalica@amgland.com)

This notice is being provided pursuant to Section 2-153(c) of Santa Ana Municipal Code.



## **AMG & Associates, LLC.**

**Cordialmente le invita a participar en una junta comunitaria para el Proyecto propuesta a continuacion:**

2202 E. 1<sup>st</sup> Street Apartments

*Un desarrollo de vivienda at 2202 E. 1<sup>st</sup> Street, Santa Ana, CA 92701*



***La ubicación propuesta de 2202 E. 1<sup>st</sup> Street Apartments es resaltada en azul.***

Debido a la crisis de salud causada por COVID-19 y para proteger la salud del publico, por favor asista virtualmente y comparte sus comentarios o ideas acerca de este nuevo desarrollo. En la reunion, se dara informacion general y vamos a responder a preguntas y aceptaremos comentarios sobre la propuesta de este proyecto.

**HORA Y FECHA DE REUNIÓN**  
**13 de octubre de 2020 – 5pm-6pm**

**LOCALIZACIÓN DE REUNIÓN: La reunion sera virtual.**  
**RSVP antes del viernes 9 de octubre**  
**para obtener información detallada**

2202 E. 1<sup>st</sup> Street Apartments será un nuevo desarrollo residencial asequible. Por favor, ven y comparte tus pensamientos o ideas acerca de este nuevo desarrollo de viviendas de alquiler. En la reunión se dara información general, vamos a responder a preguntas y aceptaremos comentarios sobre la propuesta de esta vivienda.

Si usted tiene preguntas acerca de este evento o requiere servicios de interpretación al español, por favor póngase en contacto con:  
Kimberly Calica al (818) 380-2600 Ext. 17 or [kcalica@amgland.com](mailto:kcalica@amgland.com)

Este aviso se proporciona conforme a la Section2-153(c) del Codio Municipal de La Ciudad de Santa Ana.

**AMG & Associates, LLC**  
 Cordially invites you to participate in a community meeting for a  
 Project proposed at construction.

**2022 E. 17 Street, Dallas, TX 75201**  
 On Thursday, October 13, 2022 at 10:00 AM, 17 Street, Dallas, TX 75201



The proposed project at 2022 E. 17 Street, Dallas, TX 75201 is a multi-story residential building. The project will include approximately 100 units and will be constructed on a 1.5-acre site. The project is located in the East Dallas area, near the intersection of 17 Street and 2022 Street.

**MEETING DATE AND TIME**  
 Thursday, October 13, 2022 - 10:00 AM

**MEETING LOCATION**  
 2022 E. 17 Street, Dallas, TX 75201

For more information regarding the project, please contact the project manager at 2022 E. 17 Street, Dallas, TX 75201. Phone: (214) 412-1234. Email: info@amgllc.com

**AMG & Associates, LLC**  
 Cordially invites you to a community information meeting for:

**2022 E. 17 Street, Dallas, TX 75201**  
 On Thursday, October 13, 2022 at 10:00 AM, 17 Street, Dallas, TX 75201



The proposed project at 2022 E. 17 Street, Dallas, TX 75201 is a multi-story residential building. The project will include approximately 100 units and will be constructed on a 1.5-acre site. The project is located in the East Dallas area, near the intersection of 17 Street and 2022 Street.

**MEETING DATE AND TIME**  
 Thursday, October 13, 2022 - 10:00 AM

**MEETING LOCATION**  
 2022 E. 17 Street, Dallas, TX 75201

For more information regarding the project, please contact the project manager at 2022 E. 17 Street, Dallas, TX 75201. Phone: (214) 412-1234. Email: info@amgllc.com

**WARNING**  
 KEEP OUT  
 PRIVATE PROPERTY - NO TRESPASSING  
 MONITORED BY ON-SITE GUARDS  
 & ALARM SURVEILLANCE  
 VIOLATORS WILL BE PROSECUTED IN C.P.C.

**COMMAND INTERNATIONAL  
 SECURITY SERVICES**  
 (877) 512-6662

*CAC*

402-181-04  
EXECUTIVE CAR LEASING CO  
7807 SANTA MONICA BLVD  
WEST HOLLYWOOD CA 90046

402-181-04  
BUSINESS OCCUPANT  
2202 E 1ST ST  
SANTA ANA CA 92705

400-032-14  
MICHAEL J WALLACE  
965 S HARVARD CIR  
ANAHEIM CA 92807

400-032-14  
BUSINESS OCCUPANT  
101 N TUSTIN AVE  
TUSTIN CA 92780

400-082-05  
KYUNG SOON LEE  
11423 EXCELSIOR DR  
NORWALK CA 90650

400-082-05  
BUSINESS OCCUPANT  
2029 E 1ST ST  
SANTA ANA CA 92705

400-082-05  
BUSINESS OCCUPANT  
2031 E 1ST ST STE A2  
SANTA ANA CA 92705

400-082-05  
BUSINESS OCCUPANT  
2031 E 1ST ST STE A3  
SANTA ANA CA 92705

400-082-05  
BUSINESS OCCUPANT  
2031 E 1ST ST STE A4  
SANTA ANA CA 92705

400-082-05  
BUSINESS OCCUPANT  
2031 E 1ST ST STE A5  
SANTA ANA CA 92705

400-082-05  
BUSINESS OCCUPANT  
2031 E 1ST ST STE A6  
SANTA ANA CA 92705

400-082-05  
BUSINESS OCCUPANT  
2031 E 1ST ST STE A7  
SANTA ANA CA 92705

400-082-05  
BUSINESS OCCUPANT  
2031 E 1ST ST STE A8  
SANTA ANA CA 92705

400-082-05  
BUSINESS OCCUPANT  
2031 E 1ST ST STE A9  
SANTA ANA CA 92705

400-082-05  
BUSINESS OCCUPANT  
2031 E 1ST ST STE B  
SANTA ANA CA 92705

400-082-05  
BUSINESS OCCUPANT  
2031 E 1ST ST STE A1  
SANTA ANA CA 92705

400-091-10  
RCM EQUITIES LLC  
210 N TUSTIN AVE  
SANTA ANA CA 92705

400-091-11,12  
WEATHERFIELD PLAZA  
200 N TUSTIN AVE # 100  
SANTA ANA CA 92705

400-091-11  
BUSINESS OCCUPANT  
200 N TUSTIN AVE STE 100  
SANTA ANA CA 92705

400-091-11  
BUSINESS OCCUPANT  
200 N TUSTIN AVE STE 110  
SANTA ANA CA 92705

400-091-11  
BUSINESS OCCUPANT  
200 N TUSTIN AVE STE 120  
SANTA ANA CA 92705

400-091-11  
BUSINESS OCCUPANT  
200 N TUSTIN AVE STE 200  
SANTA ANA CA 92705

400-091-13  
HOOSHANG DALAVAIAIAN  
100 N TUSTIN AVE  
TUSTIN CA 92780

400-091-16  
VICTOR AVILA  
2201 E FIRST ST  
SANTA ANA CA 92705

400-091-17  
GUEST HOUSE LP  
2151 E 1ST ST  
SANTA ANA CA 92705

400-091-17  
CURRENT RESIDENT  
2151 E 1ST ST UNIT 104  
SANTA ANA CA 92705

400-091-17  
CURRENT RESIDENT  
2151 E 1ST ST UNIT 105  
SANTA ANA CA 92705

400-091-17  
CURRENT RESIDENT  
2151 E 1ST ST UNIT 106  
SANTA ANA CA 92705

400-091-17  
CURRENT RESIDENT  
2151 E 1ST ST UNIT 107  
SANTA ANA CA 92705

400-091-17  
CURRENT RESIDENT  
2151 E 1ST ST UNIT 108  
SANTA ANA CA 92705

400-091-17  
CURRENT RESIDENT  
2151 E 1ST ST UNIT 109  
SANTA ANA CA 92705

400-091-17  
CURRENT RESIDENT  
2151 E 1ST ST UNIT 110  
SANTA ANA CA 92705

400-091-17  
CURRENT RESIDENT  
2151 E 1ST ST UNIT 111  
SANTA ANA CA 92705

400-091-17  
CURRENT RESIDENT  
2151 E 1ST ST UNIT 112  
SANTA ANA CA 92705

400-091-17  
CURRENT RESIDENT  
2151 E 1ST ST UNIT 114  
SANTA ANA CA 92705

400-091-17  
CURRENT RESIDENT  
2151 E 1ST ST UNIT 116  
SANTA ANA CA 92705

400-091-17  
CURRENT RESIDENT  
2151 E 1ST ST UNIT 118  
SANTA ANA CA 92705

400-091-17  
CURRENT RESIDENT  
2151 E 1ST ST UNIT 119  
SANTA ANA CA 92705

400-091-17  
CURRENT RESIDENT  
2151 E 1ST ST UNIT 120  
SANTA ANA CA 92705

400-091-17  
CURRENT RESIDENT  
2151 E 1ST ST UNIT 115  
SANTA ANA CA 92705

400-091-17  
CURRENT RESIDENT  
2151 E 1ST ST UNIT 117  
SANTA ANA CA 92705

400-091-17  
CURRENT RESIDENT  
2151 E 1ST ST UNIT 121  
SANTA ANA CA 92705

400-091-17  
CURRENT RESIDENT  
2151 E 1ST ST UNIT 122  
SANTA ANA CA 92705

400-091-17  
CURRENT RESIDENT  
2151 E 1ST ST UNIT 123  
SANTA ANA CA 92705

400-091-17  
CURRENT RESIDENT  
2151 E 1ST ST UNIT 124  
SANTA ANA CA 92705

400-091-17  
CURRENT RESIDENT  
2151 E 1ST ST UNIT 127  
SANTA ANA CA 92705

400-091-17  
CURRENT RESIDENT  
2151 E 1ST ST UNIT 129  
SANTA ANA CA 92705

400-091-17  
CURRENT RESIDENT  
2151 E 1ST ST UNIT 130  
SANTA ANA CA 92705

400-091-17  
CURRENT RESIDENT  
2151 E 1ST ST UNIT 125  
SANTA ANA CA 92705

400-091-17  
CURRENT RESIDENT  
2151 E 1ST ST UNIT 126  
SANTA ANA CA 92705

400-091-17  
CURRENT RESIDENT  
2151 E 1ST ST UNIT 128  
SANTA ANA CA 92705

400-091-17  
CURRENT RESIDENT  
2151 E 1ST ST UNIT 131  
SANTA ANA CA 92705

400-091-17  
CURRENT RESIDENT  
2151 E 1ST ST UNIT 136  
SANTA ANA CA 92705

400-091-17  
CURRENT RESIDENT  
2151 E 1ST ST UNIT 134  
SANTA ANA CA 92705

400-091-17  
CURRENT RESIDENT  
2151 E 1ST ST UNIT 135  
SANTA ANA CA 92705

400-091-17  
CURRENT RESIDENT  
2151 E 1ST ST UNIT 138  
SANTA ANA CA 92705

400-091-17  
CURRENT RESIDENT  
2151 E 1ST ST UNIT 140  
SANTA ANA CA 92705

400-091-17  
CURRENT RESIDENT  
2151 E 1ST ST UNIT 201  
SANTA ANA CA 92705

400-091-17  
CURRENT RESIDENT  
2151 E 1ST ST UNIT 202  
SANTA ANA CA 92705

400-091-17  
CURRENT RESIDENT  
2151 E 1ST ST UNIT 139  
SANTA ANA CA 92705





400-091-17  
CURRENT RESIDENT  
2151 E 1ST ST UNIT 234  
SANTA ANA CA 92705

400-091-17  
CURRENT RESIDENT  
2151 E 1ST ST UNIT 235  
SANTA ANA CA 92705

400-091-17  
CURRENT RESIDENT  
2151 E 1ST ST UNIT 236  
SANTA ANA CA 92705

400-091-17  
CURRENT RESIDENT  
2151 E 1ST ST UNIT 237  
SANTA ANA CA 92705

400-091-17  
CURRENT RESIDENT  
2151 E 1ST ST UNIT 238  
SANTA ANA CA 92705

400-091-17  
CURRENT RESIDENT  
2151 E 1ST ST UNIT 239  
SANTA ANA CA 92705

400-091-17  
CURRENT RESIDENT  
2151 E 1ST ST UNIT 240  
SANTA ANA CA 92705

400-091-18  
DOUGLAS JIN LEE  
855 WILCOX AVE # 303  
LOS ANGELES CA 90038

400-091-18  
BUSINESS OCCUPANT  
2131 E 1ST ST  
SANTA ANA CA 92705

400-091-19  
ING WEN HWANG  
5712 HIGHGATE TER  
IRVINE CA 92603

400-091-19  
BUSINESS OCCUPANT  
2101 E 1ST ST  
SANTA ANA CA 92705

400-091-19  
BUSINESS OCCUPANT  
2111 E 1ST ST  
SANTA ANA CA 92705

400-091-22  
NEXUS GARDEN PLAZA  
100 N BARRANCA ST # 200  
WEST COVINA CA 91791

400-091-22  
BUSINESS OCCUPANT  
2112 E 4TH ST STE 100  
SANTA ANA CA 92705

400-091-22  
BUSINESS OCCUPANT  
2112 E 4TH ST STE 101  
SANTA ANA CA 92705

400-091-22  
BUSINESS OCCUPANT  
2112 E 4TH ST STE 102  
SANTA ANA CA 92705

400-091-22  
BUSINESS OCCUPANT  
2112 E 4TH ST STE 103  
SANTA ANA CA 92705

400-091-22  
BUSINESS OCCUPANT  
2112 E 4TH ST STE 104  
SANTA ANA CA 92705

400-091-22  
BUSINESS OCCUPANT  
2112 E 4TH ST STE 107  
SANTA ANA CA 92705

400-091-22  
BUSINESS OCCUPANT  
2112 E 4TH ST STE 108  
SANTA ANA CA 92705

400-091-22  
BUSINESS OCCUPANT  
2112 E 4TH ST STE 109  
SANTA ANA CA 92705

400-091-22  
BUSINESS OCCUPANT  
2112 E 4TH ST STE 110  
SANTA ANA CA 92705

400-091-22  
BUSINESS OCCUPANT  
2112 E 4TH ST STE 111  
SANTA ANA CA 92705

400-091-22  
BUSINESS OCCUPANT  
2112 E 4TH ST STE 112  
SANTA ANA CA 92705

400-091-22  
BUSINESS OCCUPANT  
2112 E 4TH ST STE 113  
SANTA ANA CA 92705

400-091-22  
BUSINESS OCCUPANT  
2112 E 4TH ST STE 114  
SANTA ANA CA 92705

400-091-22  
BUSINESS OCCUPANT  
2112 E 4TH ST STE 200  
SANTA ANA CA 92705

400-091-22  
BUSINESS OCCUPANT  
2112 E 4TH ST STE 210  
SANTA ANA CA 92705

400-091-22  
BUSINESS OCCUPANT  
2112 E 4TH ST STE 218  
SANTA ANA CA 92705

400-091-22  
BUSINESS OCCUPANT  
2112 E 4TH ST STE 220  
SANTA ANA CA 92705

400-091-22  
BUSINESS OCCUPANT  
2112 E 4TH ST STE 221  
SANTA ANA CA 92705

400-091-22  
BUSINESS OCCUPANT  
2112 E 4TH ST STE 222  
SANTA ANA CA 92705

400-091-22  
BUSINESS OCCUPANT  
2112 E 4TH ST STE 228  
SANTA ANA CA 92705

400-091-22  
BUSINESS OCCUPANT  
2112 E 4TH ST STE 230  
SANTA ANA CA 92705

400-091-22  
BUSINESS OCCUPANT  
2112 E 4TH ST STE 235  
SANTA ANA CA 92705

400-091-22  
BUSINESS OCCUPANT  
2112 E 4TH ST STE 238  
SANTA ANA CA 92705

400-091-22  
BUSINESS OCCUPANT  
2112 E 4TH ST STE 240  
SANTA ANA CA 92705

400-091-23  
CREST OLIVE  
2130 E FOURTH ST  
SANTA ANA CA 92705

400-091-23  
BUSINESS OCCUPANT  
2130 E 4TH ST STE 107  
SANTA ANA CA 92705

400-091-23  
BUSINESS OCCUPANT  
2130 E 4TH ST STE 110  
SANTA ANA CA 92705

400-091-23  
BUSINESS OCCUPANT  
2130 E 4TH ST STE 115  
SANTA ANA CA 92705

400-091-23  
BUSINESS OCCUPANT  
2130 E 4TH ST STE 120  
SANTA ANA CA 92705

400-091-23  
BUSINESS OCCUPANT  
2130 E 4TH ST STE 125  
SANTA ANA CA 92705

400-091-23  
BUSINESS OCCUPANT  
2130 E 4TH ST STE 150  
SANTA ANA CA 92705

400-091-23  
BUSINESS OCCUPANT  
2130 E 4TH ST STE 160  
SANTA ANA CA 92705

400-091-23  
BUSINESS OCCUPANT  
2130 E 4TH ST STE 103  
SANTA ANA CA 92705

400-091-23  
BUSINESS OCCUPANT  
2130 E 4TH ST STE 100  
SANTA ANA CA 92705

400-091-23  
BUSINESS OCCUPANT  
2130 E 4TH ST STE 180  
SANTA ANA CA 92705

400-091-23  
BUSINESS OCCUPANT  
2130 E 4TH ST STE 200  
SANTA ANA CA 92705

400-091-24  
KASM EAST FOURTH LLC/MK EAST  
FOURTH LLC  
2212 E 4TH ST  
SANTA ANA CA 92705

400-091-24  
BUSINESS OCCUPANT  
2212 E 4TH ST STE 101  
SANTA ANA CA 92705

400-091-24  
BUSINESS OCCUPANT  
2212 E 4TH ST STE 102  
SANTA ANA CA 92705

400-091-24  
BUSINESS OCCUPANT  
2212 E 4TH ST STE 103  
SANTA ANA CA 92705

400-091-24  
BUSINESS OCCUPANT  
2212 E 4TH ST STE 104  
SANTA ANA CA 92705

400-091-24  
BUSINESS OCCUPANT  
2212 E 4TH ST STE 201  
SANTA ANA CA 92705

400-091-24  
BUSINESS OCCUPANT  
2212 E 4TH ST STE 202  
SANTA ANA CA 92705

400-091-24  
BUSINESS OCCUPANT  
2212 E 4TH ST STE 301  
SANTA ANA CA 92705

400-091-24  
BUSINESS OCCUPANT  
2212 E 4TH ST STE 302  
SANTA ANA CA 92705

400-091-24  
BUSINESS OCCUPANT  
2212 E 4TH ST STE 303  
SANTA ANA CA 92705

400-091-24  
BUSINESS OCCUPANT  
2212 E 4TH ST STE 304  
SANTA ANA CA 92705

402-181-03  
2210 E FIRST STREET LLC  
1900 AVENUE OF THE STARS # 2300  
LOS ANGELES CA 90067

402-181-03  
BUSINESS OCCUPANT  
2210 E 1ST ST  
SANTA ANA CA 92705

402-181-11  
SANTA ANA SR ASSOCIATES  
430 E STATE ST # 100  
EAGLE ID 83616

402-181-11  
BUSINESS OCCUPANT  
2222 E 1ST ST  
SANTA ANA CA 92705

402-181-12,14  
STATE OF CALIFORNIA  
2501 PULLMAN ST  
SANTA ANA CA 92705

402-181-13  
SAYED M & EVELIN Y FAZELY  
PO BOX 77325  
CORONA CA 92877

402-191-01,02,04  
BROOMELL COMMERCIAL  
PROPERTIES/SANTA ANA PACIFIC  
430 E STATE ST # 100  
EAGLE ID 83616

402-191-01  
BROOMWELL COML PROP LP  
1561 WYNDHAM COURT RD  
SANTA ANA CA 92705

402-191-01  
BUSINESS OCCUPANT  
2114 E 1ST ST  
SANTA ANA CA 92705

402-191-02  
BUSINESS OCCUPANT  
2020 W 1ST ST  
SANTA ANA CA 92703

402-191-04  
BUSINESS OCCUPANT  
2110 E 1ST ST  
SANTA ANA CA 92705

402-191-03  
2020 E FIRST LLC  
200 PINE AVE # 630  
LONG BEACH CA 90802

402-191-03  
BUSINESS OCCUPANT  
2020 E 1ST ST STE 103  
SANTA ANA CA 92705

402-191-03  
BUSINESS OCCUPANT  
2020 E 1ST ST STE 110  
SANTA ANA CA 92705

402-191-03  
BUSINESS OCCUPANT  
2020 E 1ST ST STE 525  
SANTA ANA CA 92705

402-191-03  
BUSINESS OCCUPANT  
2020 E 1ST ST STE 120  
SANTA ANA CA 92705

402-191-10  
SISTERS OF COMPANY OF MARY OUR  
LADY  
16791 E MAIN ST  
TUSTIN CA 92780

935-67-001  
MIGUEL & MARIA A GUZMAN  
16882 STONE GLASS AVE  
TUSTIN CA 92780

935-67-002  
MICHAEL REDIESS  
16884 STONEGLASS  
TUSTIN CA 92780

935-67-003  
GROENEWALD ROUAN & CHRISTINA  
MARIE  
16886 STONEGLASS  
TUSTIN CA 92780

935-67-004  
HEALY RICHARD ALAN & KAREN ILENE  
PO BOX 3486  
TUSTIN CA 92781

935-67-004  
CURRENT RESIDENT  
16888 STONEGLASS  
TUSTIN CA 92780

935-67-005  
SANDRA BASABE  
16892 STONEGLASS  
TUSTIN CA 92780

935-67-006  
JOHN & VIKTORIA M ORTEGA  
274 S CITRUS  
ORANGE CA 92868

935-67-006  
CURRENT RESIDENT  
16894 STONEGLASS  
TUSTIN CA 92780

935-67-007  
FRANK SITU  
16896 STONEGLASS  
TUSTIN CA 92780

935-67-008  
ARNTSON L/RONALD JOYCE  
28012 CAMINA LA RONDA  
SAN JUAN CAPISTRA CA 92675

935-67-008  
CURRENT RESIDENT  
16898 STONEGLASS  
TUSTIN CA 92780

935-67-009  
RICHARD A VUICH/WENXIN KONG  
16908 STONEGLASS  
TUSTIN CA 92780

935-67-010  
RYAN L YAO  
16906 STONEGLASS  
TUSTIN CA 92780

935-67-011  
MONICK DEL LA RIVA/ANDREW VALLE  
16904 STONEGLASS  
TUSTIN CA 92780

935-67-012  
DENISSE GALVAN  
16902 STONEGLASS  
TUSTIN CA 92780

935-67-013  
KENNETH G WHITE  
16910 STONEGLASS  
TUSTIN CA 92780

935-67-014  
CHARLES JOSEPH & SANDRA A PERRERA  
16912 STONEGLASS  
TUSTIN CA 92780

935-67-015  
CARLOS A & SONIA VARGAS  
16914 STONEGLASS  
TUSTIN CA 92780

935-67-016  
GORMIN J S/R J FAM TRUST  
28142 HIBISCUS  
LAGUNA NIGUEL CA 92677

935-67-016  
CURRENT RESIDENT  
16916 STONEGLASS  
TUSTIN CA 92780

935-67-017  
ROBERT E & DEBORAH A HENDRICKS  
16918 STONEGLASS  
TUSTIN CA 92780

935-67-018  
DUNG NGUYEN  
PO BOX 60130  
IRVINE CA 92602

935-67-018  
CURRENT RESIDENT  
16920 STONEGLASS  
TUSTIN CA 92780

935-67-019  
ROBERTO VEGA ROSAS/OBDULIA PEREZ  
DE LA CRUZ  
16922 STONEGLASS  
TUSTIN CA 92780

935-67-020  
BERTHA VALDEZ  
16924 STONEGLASS  
TUSTIN CA 92780

935-67-021  
ELIZABETH ANN FISCHER  
16932 STONEGLASS  
TUSTIN CA 92780

935-67-022  
MARIA DOLORES RAMOS  
4656 FISHER ST  
LOS ANGELES CA 90022

935-67-022  
CURRENT RESIDENT  
16930 STONEGLASS  
TUSTIN CA 92780

935-67-023  
PATRICIA ARENAS/CESAR NORIEGA  
16928 STONEGLASS  
TUSTIN CA 92780

935-67-024  
GERALD J CANALE  
16926 STONEGLASS  
TUSTIN CA 92780

935-67-025  
SCOTT D MILLER  
34558 CALLE PORTOLA  
CAPO BEACH CA 92624

935-67-025  
CURRENT RESIDENT  
15192 MOIR CT  
TUSTIN CA 92780

935-67-026  
LUIS R & MARIA E MARTINEZ  
15194 MOIR CT  
TUSTIN CA 92780

935-67-027  
CURTIS J & CONNY M CRAIG  
15196 MOIR CT  
TUSTIN CA 92780

935-67-028  
JESSICA HOANG  
15198 MOIR CT  
TUSTIN CA 92780

935-67-029  
MARICELA ALVARADO  
15182 MOIR CT  
TUSTIN CA 92780

935-67-030  
WALEED Y & MARICELA ALTHAQEB  
15184 MOIR CT  
TUSTIN CA 92780

935-67-031  
KEITH C TANG  
PO BOX 4084  
IRVINE CA 92616

935-67-031  
CURRENT RESIDENT  
15186 MOIR CT  
TUSTIN CA 92780

935-67-032  
RUBEN TORRES PARRA  
15188 MOIR CT  
TUSTIN CA 92870

935-67-033  
BARRY DENLINGER  
1636 E EDINGER AVE  
SANTA ANA CA 92705

935-67-033  
CURRENT RESIDENT  
15172 MOIR CT  
TUSTIN CA 92780

935-67-034  
YUSUKE KAWAMATA  
15174 MOIR CT  
TUSTIN CA 92780

935-67-035  
MICHEL FRANCIS M F FLOWERS FLOWERS  
15176 MOIR CT  
TUSTIN CA 92680

935-67-036  
TIMOTHY J & JONI HOWARD  
2380 CLAUDIA ST  
CORONA CA 92882

935-67-036  
CURRENT RESIDENT  
15178 MOIR CT  
TUSTIN CA 92780

935-67-037  
DIANE A ASTADURIAN  
19561 GRANDVIEW CIR  
HUNTINGTON BEACH CA 92648

935-67-038  
DENNIS OLIVA  
16897 STONEGLASS  
TUSTIN CA 92780

935-67-039  
KATHERYN L WHITTAKER  
PO BOX 25202  
LOS ANGELES CA 90025

935-67-039  
CURRENT RESIDENT  
15166 MOIR CT  
TUSTIN CA 92780

935-67-040  
GEORGE MICHAEL PONG  
15168 MOIR CT  
TUSTIN CA 92780

935-67-041  
ERICK DEL RAZO  
15152 MOIR CT  
TUSTIN CA 92780

935-67-042  
JACKIE L & TEXIE TISOR  
15154 MOIR CT  
TUSTIN CA 92780

935-67-043  
JOSE ALBERTO PADILLA  
15156 MOIR CT  
TUSTIN CA 92780

935-67-044  
ROSE GALLUZZO  
15158 MOIR CT  
TUSTIN CA 92780

935-67-045  
ESTHER RAMIREZ-VEGA/RAFAEL JR VEGA  
15142 MOIR CT  
TUSTIN CA 92780

935-67-046  
SANDRA L CHAIBUN  
15144 MOIR CT  
TUSTIN CA 92780

935-67-047  
KELLEY RYAN/JESSICA GAGNON  
15146 MOIR CT  
TUSTIN CA 92780

935-67-048  
NGUYEN HUY & ELIZABETH  
15148 MOIR CT  
TUSTIN CA 92780

935-67-049  
ANDRANEK D ASTADURIAN  
1835 N WILSON AVE  
UPLAND CA 91784

935-67-049  
CURRENT RESIDENT  
15138 MOIR CT  
TUSTIN CA 92780

935-67-050  
MARK S STOFFER  
15136 MOIR CT  
TUSTIN CA 92780

935-67-051  
JAYASINGHA ARACHCHIGE &  
MADDAKANDAGE JAYASINGHA  
15134 MOIR CT  
TUSTIN CA 92780

935-67-052  
DAVID M FLYNN  
15132 MOIR CT  
TUSTIN CA 92780

935-67-053  
JAMES IAN & KATHERINE  
16915 DONWEST  
TUSTIN CA 92780

935-67-054  
VICKI L STEVENS  
14004 LIGHT ST  
WHITTIER CA 90605

935-67-054  
CURRENT RESIDENT  
16913 DONWEST  
TUSTIN CA 92780

935-67-055  
AGNES A AIDOO  
16911 DONWEST  
TUSTIN CA 92780

935-67-056  
BONNIE L MCLAREN  
16909 DONWEST  
TUSTIN CA 92780

935-67-057  
RICHARD ANTHONY & ROSE MARIE BAKO  
16901 DONWEST  
TUSTIN CA 92780

935-67-058  
DANG TRONGHIEU/MICHELLE T LE  
16903 DONWEST  
TUSTIN CA 92780

935-67-059  
EPUNI HINNEBUSCH  
16905 DONWEST  
TUSTIN CA 92780

935-67-060  
MARGARET P DRUILHET  
1708 SAVANNAH DR NE  
RIO RANCHO NM 87144

935-67-060  
CURRENT RESIDENT  
16907 DONWEST  
TUSTIN CA 92780

935-67-061  
PETER THANH NGUYEN/THUY THANH VU  
16883 DONWEST  
TUSTIN CA 92780

935-67-062  
WENDY LYNN WYNDHAMSMITH  
16881 DONWEST  
TUSTIN CA 92780

935-67-063  
ANDRADE ANGEL & SAYRA  
16879 DONWEST  
TUSTIN CA 92780

935-67-064  
JOSEPH E PICO/MARIA R SANSONE  
16877 DONWEST  
TUSTIN CA 92780

935-67-065  
LORENA ANDREA & MIGUEL ANGEL  
ZAVALA  
16875 DONWEST  
TUSTIN CA 92780

935-67-066  
DO MAILINH T & THANH-HUY  
16873 DONWEST  
TUSTIN CA 92780

935-67-067  
NORA CASTRO  
16871 DONWEST  
TUSTIN CA 92780

935-67-068  
JEAN M STRINGER  
16869 DONWEST  
TUSTIN CA 92780

935-67-069  
PAULETTE A BRIZZOLARA  
16861 DONWEST  
TUSTIN CA 92780

935-67-070  
MARILYN B LEWIS  
16863 DONWEST  
TUSTIN CA 92780

935-67-071  
PATRICIA GARCIA  
16865 DONWEST  
TUSTIN CA 92780

935-67-072  
ZINZUN ALFONSO & GILDA NOEMI  
16867 DONWEST  
TUSTIN CA 92780

935-67-073  
ANNE WENG  
16878 DONWEST  
TUSTIN CA 92780

935-67-074  
SALVADOR RIVERA PEREZ  
16876 DONWEST  
TUSTIN CA 92780

935-67-075  
EDEN TANALEON  
16874 DONWEST  
TUSTIN CA 92780

935-67-076  
ERIC & LUCINDA TAFOLLA  
16672 DONWEST  
TUSTIN CA 92780

935-67-077  
MARLENE J MC VAY  
1952 PENNINGTON AVE  
TUSTIN CA 92780

935-67-077  
CURRENT RESIDENT  
16882 DONWEST  
TUSTIN CA 92780

935-67-078  
DEVON ROSS GERWOLLS  
16884 DONWEST  
TUSTIN CA 92780

935-67-079  
RONALD L & KATHLEEN R DROLET  
9162 EL RITO DR  
VILLA PARK CA 92861

935-67-079  
CURRENT RESIDENT  
16886 DONWEST  
TUSTIN CA 92780

935-67-080  
DENNIS GILMORE/CINDI QUALLS  
16888 DONWEST  
TUSTIN CA 92780

935-67-081  
JOSE G & FABIOLA A PEREZ  
16908 DONWEST  
TUSTIN CA 92780

935-67-082  
ELIZANDRO M & ANGELICA ARVIZU  
16906 DONWEST  
TUSTIN CA 92780

935-67-083  
GWYNNEDD M/JACK T NEELON  
18722 PATRICIAN DR  
VILLA PARK CA 92861

935-67-083  
CURRENT RESIDENT  
16904 DONWEST  
TUSTIN CA 92780

935-67-084  
ARMANDO PENA  
16902 DONWEST  
TUSTIN CA 92780

935-67-085  
NOAM SHANKER  
15187 MOIR CT  
TUSTIN CA 92782

935-67-086  
JOANN DARCEL ROIZ  
15185 MOIR CT  
TUSTIN CA 92780

935-67-087  
KIMO /NORIKO BURNHAM  
3179 SICILY AVE  
COSTA MESA CA 92626

935-67-087  
CURRENT RESIDENT  
15183 MOIR CT  
TUSTIN CA 92780

935-67-088  
ISABEL S PLACENCIO  
15181 MOIR CT  
TUSTIN CA 92780

935-67-089  
DENNIS & MARY OLIVA  
16897 STONEGLASS  
TUSTIN CA 92780

935-67-090  
GLORIA B ZEMITIS  
16895 STONEGLASS  
TUSTIN CA 92780

935-67-091  
LISA MICHELLE GIUSIANA  
16893 STONEGLASS  
TUSTIN CA 92780

935-67-092  
ROSEANNE L GIBSON  
16891 STONEGLASS  
TUSTIN CA 92780

935-67-093  
CAROLYN A DE CLERCK  
16881 STONEGLASS  
TUSTIN CA 92780

935-67-094  
MERCEDE SCHROEDER  
16883 STONEGLASS  
TUSTIN CA 92780

935-67-095  
SUN WON KIM  
16885 STONEGLASS  
TUSTIN CA 92780

935-67-096  
PAMELA K KENNARD  
16887 STONEGLASS  
TUSTIN CA 92780

935-67-097  
TIMOTHY M BUNCH  
16868 DONWEST  
TUSTIN CA 92780

935-67-098  
OH YAMILA  
16866 DONWEST  
TUSTIN CA 92780

935-67-099  
EMILIANO & MARGARITA MONJE  
16864 DONWEST  
TUSTIN CA 92780

935-67-100  
SOTO SAMANTHA M J  
16862 DONWEST  
TUSTIN CA 92780

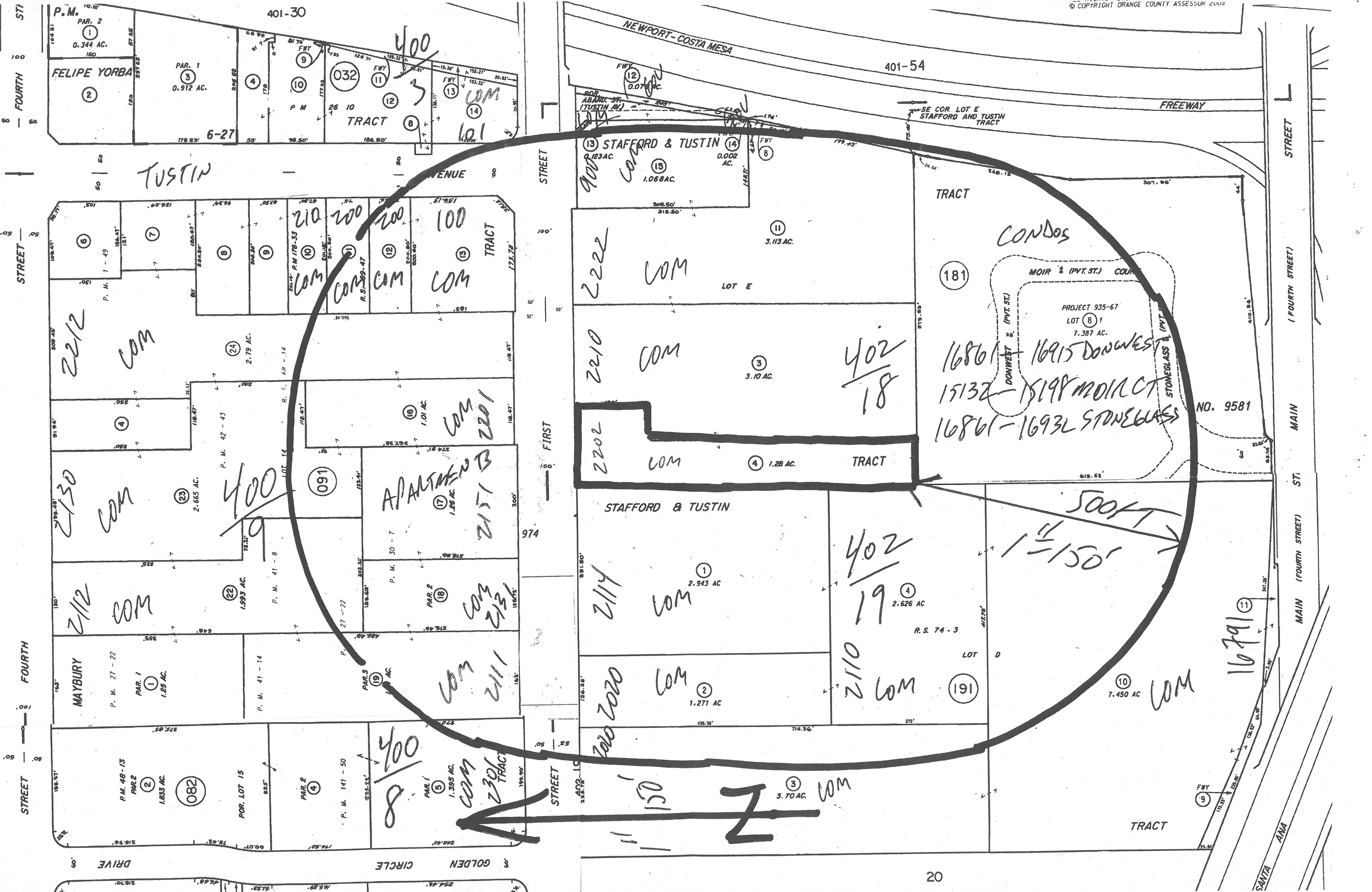
935-67-101  
JOSELIZA C KITCHELL  
16867 STONEGLASS  
TUSTIN CA 92780

935-67-102  
KAURENE A & JOHN PEREZ  
16865 STONEGLASS  
TUSTIN CA 92780

935-67-103  
ROBERT J ACOSTA/GLORIA DORANTES  
17462 VILLAGE DR  
TUSTIN CA 92780

935-67-103  
CURRENT RESIDENT  
16863 STONEGLASS  
TUSTIN CA 92780

935-67-104  
MIGUEL SOLIS  
16861 STONEGLASS  
TUSTIN CA 92780



P.M. 401-30  
 PAR. 2 ① 0.344 AC.  
 FELIPE YORBA ②  
 PAR. 1 ③ 0.912 AC.  
 6-27  
 TRACT  
 400  
 3  
 101

TUSTIN AVENUE  
 210  
 200  
 100  
 COM  
 COM  
 COM  
 COM

2212 COM  
 2130 COM  
 400  
 091  
 APARTMENTS  
 2151  
 2201

MAYBURY  
 2112 COM  
 1995 AC.  
 27-22  
 211 COM  
 2131  
 2111

P.M. 40-13 PAR. 2 ② 1.833 AC. 082  
 POR. LOT 15  
 PAR. 2 ④  
 P.M. 141-50  
 8/150  
 2301 TRACT  
 COM

NEWPORT-COSTA MESA FREEWAY  
 401-54  
 SE COR. LOT E STAFFORD AND TUSTIN TRACT  
 13 STAFFORD & TUSTIN ⑬ 0.123 AC.  
 14 ⑭ 0.002 AC.  
 15 ⑮ 1.068 AC.  
 11 ⑪ 3.113 AC.  
 3 ③ 3.10 AC.  
 4 ④ 1.28 AC. TRACT

CONDOS  
 181  
 MOIR & (PVT. ST.) CONDOS  
 PROJECT 935-67 LOT ⑧ 1 7.387 AC.  
 16861-16915 DOWNWEST  
 15132-15198 MOIR CT  
 16861-16932 STONEGLASS  
 NO. 9581  
 402  
 18  
 2222 COM  
 2210 COM  
 2202 COM  
 2114 COM 2.943 AC ①  
 2110 COM 1.271 AC ②  
 3.70 AC. COM ③

STAFFORD & TUSTIN  
 974  
 402  
 19  
 2.626 AC ④  
 R.S. 74-3  
 LOT D  
 2110 COM ⑩ 7.450 AC  
 500 FT  
 1 1/4 150'  
 10791 ⑪  
 TRACT



Certified Property Owner's  
Affidavit

I, MICHAEL HILGELSON

Hereby certify that the attached list contains the names and addresses of all persons to whom all property is assessed as they appear on the latest available assessment roll of the county within the area described on the attached application and for all properties within 500 feet from the exterior boundaries of the property described on the attached application, as of 7/23/20

If the site address differs from the mailing address, or if there are multiple unit addresses, a label has also been included addressed to Occupant.

Subject Parcel number 402 181 04

I certify under penalty of perjury the forgoing is true and correct to the best of my knowledge.

(Signed) [Signature]

Name MICHAEL HILGELSON

Address 11771 WARSHEL BEND VALLEY 95946

Phone # 800 568 7104

# ORANGE COUNTY REPORTER

~SINCE 1921~

Mailing Address : 600 W SANTA ANA BLVD, SANTA ANA, CA 92701  
Telephone (714) 543-2027 / Fax (714) 542-6841  
Visit us @ www.LegalAdstore.com

KIMBERLY CALICA  
AMG & ASSOCIATES LLC  
PO BOX 260770  
ENCINO, CA 91426

OR# 3403771

**AMG & Associates, LLC.**  
**Cordially invites you to a community information meeting for:**  
**2202 E. 1<sup>st</sup> Street Apartments**  
An Affordable Housing Development  
at 2202 E. 1<sup>st</sup> Street, Santa Ana, CA 92701

## COPY OF NOTICE

In an effort to protect public health and prevent the spread of COVID-19 (Coronavirus), please virtually attend and share your thoughts and ideas about this new affordable housing development. During the meeting, we will provide general information, answer questions and solicit input on the development proposal.

**MEETING DATE AND TIME**  
**October 13<sup>th</sup>, 2020 – 5pm-6pm**  
**MEETING LOCATION: Meeting to be held virtually.**  
**RSVP by Friday, October 9<sup>th</sup> for detailed information**

2202 E. 1<sup>st</sup> Street Apartments will be a new affordable residential development. Please come and share your thoughts and ideas about this new rental housing development. At the meeting we will provide general information, answer questions and solicit input on the housing proposal. If you have questions regarding this event or you require language interpretation services in languages other than English, please contact: Kimberly Calica at (818) 380-2600 Ext. 17 or kcalica@amgland.com  
This notice is being provided pursuant to Section 2-153(c) of Santa Ana Municipal 10/2/20

**OR-3403771#**

Notice Type: HRG NOTICE OF HEARING

Ad Description  
SANTA ANA COMMUNITY MEETING October 13th, 2020

To the right is a copy of the notice you sent to us for publication in the ORANGE COUNTY REPORTER. Thank you for using our newspaper. Please read this notice carefully and call us with any corrections. The Proof of Publication will be filed with the County Clerk, if required, and mailed to you after the last date below. Publication date(s) for this notice is (are):

10/02/2020

The charge(s) for this order is as follows. An invoice will be sent after the last date of publication. If you prepaid this order in full, you will not receive an invoice.

Publication	\$51.15
Total	\$51.15

### Daily Journal Corporation

Serving your legal advertising needs throughout California.

ORANGE COUNTY REPORTER, SANTA ANA	(714) 543-2027
BUSINESS JOURNAL, RIVERSIDE	(951) 784-0111
DAILY COMMERCE, LOS ANGELES	(213) 229-5300
LOS ANGELES DAILY JOURNAL, LOS ANGELES	(213) 229-5300
SAN FRANCISCO DAILY JOURNAL, SAN FRANCISCO	(800) 640-4829
SAN JOSE POST-RECORD, SAN JOSE	(408) 287-4866
THE DAILY RECORDER, SACRAMENTO	(916) 444-2355
THE DAILY TRANSCRIPT, SAN DIEGO	(619) 232-3486
THE INTER-CITY EXPRESS, OAKLAND	(510) 272-4747



\* A 0 0 0 0 0 5 5 2 9 5 0 1 \*

2202 E. First Street  
Santa Ana, CA 92701  
Sunshine Ordinance - Community Meeting  
Meeting Minutes

In compliance with the Sunshine Ordinance, a community meeting was held in virtually on October 13<sup>th</sup>, 2020 from 5:00 pm - 6:00 pm.

Representatives from the Developer were as follows:

- Gene Broussard (AMG & Associates, LLC.)
- Kimberly Calica (AMG & Associates, LLC.)

Representatives from the City of Santa Ana:

- Ivan Orozco (assigned Case Planner)

Representatives of the Community

- Jean String
- Maria Sanchez
- Mike Broomell
- Patti Garcia

The four members of the community attended the virtual meeting. AMG waited for additional members of the community to arrive before giving their presentation. An overview of the project, as well as the plans of the project were presented to the attendees.

Patti Garcia had questions about parking, the number of stalls, and number of units. She also had questions regarding the details on the neighboring projects. She shared her thoughts about the intensity of the projects on First Street and the traffic, which she directed to Ivan Orozco. Ivan provided insight regarding the way the projects are processed with the City.

Jean String had questions regarding security at these projects and the property line walls of the current projects under construction. Gene Broussard will connect with Jean String after the meeting to provide more information on these walls.

Patti Garcia asked if these projects were HUD projects. Gene Broussard explained that these were not and provided information regarding the requirements to qualify as a resident.

Patti Garcia expressed her thoughts on the colors of the project and wanted to make suggestions. Ivan Orozco explained that the MEMU does not specify a color palette and that suggestions at the meeting is the time to make them. AMG noted the suggestions and will communicate this to their architect.

Patti Garcia inquired on the number of notices sent out and AMG explained that just under 300 flyers were sent out to those within a 500-foot radius of the project.

Mike Broomell introduced himself as the owner of the adjacent project. Jean String and Patti Garcia communicated to the Mike Broomell that they felt there would be a parking problem. Gene Broussard explained that AMG has worked with the City on this and other means to prevent parking issues will be provided.

Patti Garcia asked questions regarding parking spaces. She asked for the number of ADA parking spaces and guest parking the project will have; Gene Broussard explained that there is a code requirement on ADA spaces that is followed and that no guest parking will be provided.

Patti Garcia directed a question to Ivan Orozco regarding the project down the street from Target. She asked if this project would be a similar type of development. Ivan Orozco did not have specifics to this project as he did not work on it.

No additional members of the community attended the event. AMG stayed on the virtual meeting with the attendees until 6 pm.