

Appendix D Biological and Natural Resource Inventory and Assessment

Appendices

This page intentionally left blank.

May 26, 2020

Dina El Chammas
Placeworks
3 MacArthur Place, Suite 1100
Santa Ana, CA 92707

Subject: Biological and Natural Resource Inventory and Assessment for the City of Santa Ana General Plan update

Dear Ms. El Chammas,

This letter describes the methods and results of the Biological and Natural Resource Inventory and Assessment for the City of Santa Ana (City), in support of the City's General Plan update and corresponding Environmental Impact Report (EIR). The City of Santa Ana is a built, urban community. As a result, readily-apparent resources, such as natural habitat and wildlife, are limited. Carlson Strategic Land Solutions (CSLS) conducted an aerial review and inventory of all open space, recreational (parks), and vacant land within the City limits, as well as within the Sphere of Influence (SOI). Following the aerial overview, CSLS conducted field surveys to spot check the results of the aerial survey. The purpose of this letter is to describe the biological and natural resource inventory within the City limits and SOI. The report provides a summary of natural resources for the entire City as well as for the following five Focus Areas in support of any required future environmental documents.

- 55 Freeway/Dyer Road
- South Bristol Street
- Grand Avenue/17th Street
- South Main Street
- West Santa Ana Boulevard

1.0 Project Location

The City of Santa Ana is located approximately 30 miles southeast of downtown Los Angeles and 10 miles northeast of Newport Beach. The City is located in the western central section of Orange County. The City is bordered by the City of Orange to the north; the City of Tustin to the east; the cities of Irvine and Costa Mesa to the south; and the cities of Fountain Valley and Garden Grove to the west (Figures 1 and 2).

Freeway access to the City is provided by the Garden Grove Freeway (SR-22) and State Route-57 (SR-57) to the north, Interstate-5 (I-5) on the northeast, State Route (SR-55) on the east, and Interstate-405 (I-405) on the south.

1.1 Environmental Setting

The City is largely urbanized with open space and vacant land scattered in various locations throughout the City. The majority of the City is developed with a mix of residential, commercial, and industrial land uses.

2.0 Methodology

2.1 Biological Survey

The Biological and Natural Resource inventory began with a thorough investigation of available literature and databases regarding existing and known open space through the City's current General Plan mapping, sensitive habitats, special status plants, and wildlife species within the City boundary and SOI.

Following the database and literature investigation, a visual aerial survey of the City was completed utilizing Google Earth aerials and existing City of Santa Ana General Plan Open Space land use designations. CSLS started with parcels currently designated Open Space on the existing City's General Plan Map. Those parcels were inventoried to determine current use and current habitat classifications on each parcel. CSLS then searched aerial photographs and identified remaining vacant parcels. For those vacant parcels, CSLS identified the APN, current land use designation, and current habitat classifications on each parcel. All parcels, open space and non-open space, are also linked to the City's GIS identification number and the size of each parcel is also provided. Following the aerial inventory of parcels, both appearing as vacant and designated as Open Space, CSLS spot-checked the parcels in the field to confirm the vegetation community onsite.

3.0 Results

Please refer to Figure 3 for City-wide inventory of vacant parcels and parcels designated open space. The inventory is also provided in tabular form in Attached A.

3.1 Vegetation Communities

Based on the aerial inventory and the field spot-check, a total of seven vegetation communities were identified within the open space and vacant parcels within the City boundary and SOI. A list of each of the vegetation communities observed is provided below.

3.1.1 Riparian

This community consists of willow species (*Salix sp.*), mulefat (*Baccharis salicifolia*), Fremont's cottonwood, elderberry (*Sambucus nigra*), and western sycamore (*Platanus racemosa*). Portions of the riparian community consists of white alder (*Alnus rhombifolia*), tree tobacco (*Nicotiana glauca*), castor bean (*Ricinus communis*), and eucalyptus trees (*Eucalyptus sp.*). This community is associated with the Santiago Creek.

3.1.2 Unvegetated Streambed

This community is associated with the natural bottom portion of the Santa Ana River. This community contains minimal amounts of vegetation or is void of vegetation completely.

3.1.3 Oak Woodland

This community consists of primarily coast live oak trees (*Quercus agrifolia*). The understory consists of minimal non-native grasses and bare ground. This community is found adjacent to Santiago Creek in the north eastern portion of the City and appeared to be associated with conserved land.

3.1.4 Ornamental

This community includes maintained landscaped areas. The ornamental vegetation is non-native, and some of it is considered invasive. The ornamental habitat type includes shade trees, such as Peruvian pepper tree (*Schinus molle*), Brazilian pepper (*Schinus terebinthifolius*), and grass associated with the City parks, primarily Kentucky bluegrass (*Poa pratensis*). This vegetation community includes River View Golf Course, Willowick Golf Course, and other various community parks found within the City boundary.

3.1.5 Ruderal

This community is associated with areas that are heavily disturbed by human activities, such as demolition of existing structures, annual mowing, and dominance of non-native and/or invasive species. The parcels mapped as ruderal include Russian thistle (*Salsola tragus*), mustard (*Brassica sp.*), cheeseweed (*Malva parviflora*), and large areas which are bare and void of vegetation.

3.1.6 Disturbed

This community is void of any vegetation and completely bare.

3.1.7 Developed

This community consists of General Plan designated Open Space parcels that are developed with structures. This community includes the Fairhaven Memorial Park and Mortuary, the Santa Ana Zoo, and the concrete lined channels found within Santa Ana River and Santiago Creek. These areas consist of primarily built materials and are frequently maintained.

3.2 Overall City Biological Inventory

CSLS identified a total of 499 parcels designated as Open Space land use within the City boundary. An additional 135 parcels were identified as vacant, or contain natural resources, and not designated Open Space. See Figure 3 for City-wide inventory of vacant parcels and parcels designated open space.

In addition to those parcels identified within the City boundary, an additional 4 parcels, consisting of 83.37 acres, were identified as vacant parcels located outside of the City boundary but within the SOI boundary. The SOI parcels include vacant parcels found portions of the concrete lined Santa Ana River located on the southwestern portion of the SOI boundary (Figure 4). Table 1 below provides the physical land use, vegetation community, acreage, and Assessor’s Parcel Number (APN) for the vacant parcels and concrete lined portions of the Santa Ana River. Attachment A contains a complete list of the open space and natural resources parcels found within the City and SOI.

Table 1. Sphere of Influence Open Space Inventory

Sphere of Influence Location	Land Use	Vegetation Community	Acreage (acres)	APN	Proposed General Plan Designation	Impact
Santa Ana River	Concrete Channel	Developed	3.53	portion of 144-261-41	No change	No
Santa Ana River	Concrete Channel	Developed	33.00	000	No change	No
Santa Ana River	Concrete Channel	Developed	5.34	000	No change	No
Santa Ana River	Concrete Channel	Developed	41.50	000	No change	No
		Total	83.37			

Source: City of Santa Ana GIS, 2019; Carlson SLS, 2019.

3.2.1 Existing Plans

Figure 3 identifies areas referred to as Existing Plans. The Existing Plans pertain to three approved Specific Plans, an Adaptive Reuse Ordinance, and two areas with Zoning Overlays (Metro East Mixed Use Overlay Zone and Transit Zoning Area). The boundaries of the Existing Plans are shown on Figure 3 for reference and the results of the inventory tabulated in Attachment A. The Existing Plan areas have not been separately tabulated as has been done for the Focus Areas.

3.3 Focus Areas

Five Focus Areas have been identified as part of the City’s General Plan Update. The Natural Resources Inventory provided in this report has been summarized by Focus Area. Summary tables provided for the five Focus Areas inventory Open Space designated land use or vacant lots and identify the existing General Plan Land Use Designation, the physical land use, vegetation community, acreage, and APN. It should be noted that some APNs, primarily the railroad right-of-way, do not provide an APN but rather are given the designation 000.

3.3.1 South Main Street

The South Main Street Focus Area does not contain any Open Space designated parcels or vacant lots (Figure 5). The parcels found within this Focus Area consists all of developed land. Furthermore, due to the built nature of this Focus Area, no impacts will occur with the proposed changes in General Plan Designations.

3.3.2 Grand Avenue/17th Street

The Grand Avenue/17th Street Focus Area consist of 2 parcels of Open Space designated parcels and 9 non-open space designated vacant parcels (Figure 6). The parcels total 3.15 acres. Table 2 below summarizes the open space designated lots found within the Focus Area Boundary and the associated vegetation community.

Table 2. Grand Avenue/17th Street Focus Area Open Space Inventory

City Identification Number	Existing General Plan Land Use Designation	General Plan Land Use	Land Use	Vegetation Community	Acreage (acres)	APN	Proposed General Plan Designation	Impact
74684	GC	General Commercial	Vacant	Disturbed	0.20	398-384-01	Urban Neighborhood	No; Disturbed vegetation community
74685	GC	General Commercial	Vacant	Disturbed	0.14	398-384-02	Urban Neighborhood	No; Disturbed vegetation community
74686	POA	Professional and Administrative Office	Vacant	Disturbed	0.14	398-384-03	Urban Neighborhood	No; Disturbed vegetation community
74692	GC	General Commercial	Vacant	Disturbed	0.26	398-384-09	Urban Neighborhood	No; Disturbed vegetation community
74693	GC	General Commercial	Vacant	Disturbed	0.29	398-384-15	Urban Neighborhood	No; Disturbed vegetation community

City Identification Number	Existing General Plan Land Use Designation	General Plan Land Use	Land Use	Vegetation Community	Acreage (acres)	APN	Proposed General Plan Designation	Impact
74694	LR-7	Low Density Residential	Vacant	Disturbed	0.14	398-384-11	Urban Neighborhood	No; Disturbed vegetation community
74695	LR-7	Low Density Residential	Vacant	Disturbed	0.14	398-384-12	Urban Neighborhood	No; Disturbed vegetation community
74696	LR-7	Low Density Residential	Vacant	Disturbed	0.21	398-384-17	Urban Neighborhood	No; Disturbed vegetation community
74697	LR-7	Low Density Residential	Vacant	Disturbed	0.16	398-384-17	Urban Neighborhood	No; Disturbed vegetation community
84970	OS	Open Space	Railroad	Developed	1.07	398-071-65	Open Space	No
84907	OS	Open Space	Railroad	Developed	0.40	000	Open Space	No
Total					3.15			
<i>Source: City of Santa Ana GIS, 2019; Carlson SLS, 2019.</i>								

3.3.3 West Santa Ana Boulevard

The West Santa Ana Boulevard Focus Area consist of 28 parcels of Open Space designated parcels and no non-open space designated vacant parcels (Figure 7). The parcels total 148.11 acres. The focus area includes the Willowick Golf Course, Angels Community Park, and a portion of the Santa Ana River (SAR). Table 3 below summarizes the open space parcels found within the Focus Area Boundary.

Table 3. West Santa Ana Boulevard Focus Area Open Space Inventory

City Identification Number	Existing General Plan Land Use Designation	General Plan Land Use	Land Use	Vegetation Community	Acreage (acres)	APN	Proposed General Plan Designation	Impact
47033	OS	Open Space	Vacant	Disturbed	2.05	198-091-56	Open Space	No
47231	OS	Open Space	Vacant	Disturbed	3.55	198-211-03	Open Space	No
47286	OS	Open Space	Willowick Golf Course	Ornamental	1.23	198-233-11	Open Space	No

City Identification Number	Existing General Plan Land Use Designation	General Plan Land Use	Land Use	Vegetation Community	Acreage (acres)	APN	Proposed General Plan Designation	Impact
47295	OS	Open Space	Willowick Golf Course	Ornamental	0.52	198-281-09	Open Space	No
47296	OS	Open Space	Willowick Golf Course	Ornamental	0.74	198-281-10	Open Space	No
47297	OS	Open Space	Willowick Golf Course	Ornamental	1.02	198-281-11	Open Space	No
47298	OS	Open Space	Willowick Golf Course	Ornamental	1.01	198-281-12	Open Space	No
47299	OS	Open Space	Willowick Golf Course	Ornamental	2.02	198-281-13	Open Space	No
47300	OS	Open Space	Willowick Golf Course	Ornamental	1.01	198-281-14	Open Space	No
47301	OS	Open Space	Willowick Golf Course	Ornamental	0.96	198-281-15	Open Space	No
47302	OS	Open Space	Willowick Golf Course	Ornamental	1.58	198-281-16	Open Space	No
47317	OS	Open Space	Willowick Golf Course	Ornamental	0.19	198-282-01	Open Space	No
47318	OS	Open Space	Willowick Golf Course	Ornamental	0.60	198-282-02	Open Space	No
47319	OS	Open Space	Willowick Golf Course	Ornamental	0.56	198-291-01	Open Space	No
47320	OS	Open Space	Vacant	Disturbed	5.65	198-291-02	Open Space	No
47321	OS	Open Space	Willowick Golf Course	Ornamental	0.02	198-291-03	Open Space	No
47322	OS	Open Space	Willowick Golf Course	Ornamental	3.78	198-291-04	Open Space	No

City Identification Number	Existing General Plan Land Use Designation	General Plan Land Use	Land Use	Vegetation Community	Acreage (acres)	APN	Proposed General Plan Designation	Impact
47323	OS	Open Space	Willowick Golf Course	Ornamental	0.20	198-291-05	Open Space	No
47324	OS	Open Space	Willowick Golf Course	Ornamental	0.45	198-291-06	Open Space	No
47325	OS	Open Space	Willowick Golf Course	Ornamental	0.63	198-291-07	Open Space	No
47326	OS	Open Space	Willowick Golf Course	Ornamental	94.44	198-291-08	Open Space	No
65826	OS	Open Space	Vacant	Disturbed	1.45	007-022-26	Open Space	No
66037	OS	Open Space	Concrete SAR	Developed	14.51	198-151-35	Open Space	No
66085	OS	Open Space	Vacant	Disturbed	2.18	402-221-05	Open Space	No
66094	OS	Open Space	Vacant	Disturbed	1.09	405-241-02	Open Space	No
66102	OS	Open Space	Vacant	Disturbed	1.92	007-100-08	Open Space	No
66170	OS	Open Space	Vacant	Disturbed	3.02	007-120-48	Open Space	No
77919	OS	Open Space	Angels Community Park	Ornamental	1.72	405-164-01	Open Space	No
Total					148.11			

Source: City of Santa Ana GIS, 2019; Carlson SLS, 2019.

3.3.4 55 Freeway/Dyer Road

The 55 Freeway/Dyer Road Focus Area consist of 7 parcels of Open Space designated and 3 parcels of Non-Open Space designated parcels (Figure 8). The parcels total 6.22 acres. Table 4 below provides the open space and vacant non-open space designated parcels found within the Focus Area Boundary.

Table 4. 55 Freeway/Dyer Road Focus Area Open Space Inventory

City Identification Number	Existing General Plan Land Use Designation	General Plan Land Use	Land Use	Vegetation Community	Acreage (acres)	APN	Proposed General Plan Designation	Impact
78591	OS	Open Space	Railroad	Developed	0.70	000	Open Space	No
78706	PAO	Professional and Administrative Office	Vacant	Ruderal	1.75	016-221-27	Industrial	No; Ruderal vegetation community
78707	PAO	Professional and Administrative Office	Vacant	Ruderal	0.81	016-221-28	Industrial	No; Ruderal vegetation community
78708	PAO	Professional and Administrative Office	Vacant	Ruderal	0.27	016-221-29	Industrial	No; Ruderal vegetation community
78904	OS	Open Space	Concrete Channel	Developed	0.04	411-141-05	Open Space	No
78905	OS	Open Space	Vacant	Ruderal	0.07	411-141-06	Open Space	No
79053	OS	Open Space	Railroad	Developed	0.98	411-131-20	Open Space	No
84986	OS	Open Space	Railroad	Developed	0.01	000	Open Space	No
85358	OS	Open Space	Railroad	Developed	0.56	000	Open Space	No
85519	OS	Open Space	Concrete channel/ Freeway	Developed	1.04	000	Open Space	No
Total					6.22			

Source: City of Santa Ana GIS, 2019; Carlson SLS, 2019.

3.3.5 South Bristol Street

The South Bristol Street Focus Area consist of 10 parcels of Open Space designated land use (Figure 9) and no vacant non-open space designated parcels. The parcels total 6.94 acres. Table 5 below provides the open space designated parcels found within the Focus Area Boundary.

Table 5. South Bristol Street Focus Area Open Space Inventory

City Identification Number	Existing General Plan Land Use Designation	General Plan Land Use	Land Use	Vegetation Community	Acreage (acres)	APN	Proposed General Plan Designation	Impact
54311	OS	Open Space	Concrete Channel	Developed	1.05	412-141-05	Open Space	No

City Identification Number	Existing General Plan Land Use Designation	General Plan Land Use	Land Use	Vegetation Community	Acreage (acres)	APN	Proposed General Plan Designation	Impact
71079	OS	Open Space	Concrete Channel	Developed	2.57	000	Open Space	No
72061	OS	Open Space	Concrete Channel - Parking lot	Developed	0.27	410-301-09	Open Space	No
72537	OS	Open Space	Linear Park	Ornamental	0.18	410-223-07	Open Space	No
84946	OS	Open Space	Railroad	Developed	0.67	Portion of 000	Open Space	No
84953	OS	Open Space	Railroad	Developed	0.60	Portion of 000	Open Space	No
84954	OS	Open Space	Concrete Channel	Developed	1.30	000	Open Space	No
84955	OS	Open Space	Underground Channel - Turf	Developed	0.18	412-131-27	Open Space	No
85349	OS	Open Space	Railroad	Developed	0.11	Portion of 000	Open Space	No
85350	OS	Open Space	Linear Park	Ornamental	0.01	Portion of 410-223-07	Open Space	No
Total					6.94			

Source: City of Santa Ana GIS, 2019; Carlson SLS, 2019.

4.0 Impact Analysis

Following the Biological and Natural Resource inventory an impact analysis was conducted for each Focus Area. For each parcel analyzed, a determination was made whether the proposed change in land use from existing land use to proposed land use would cause a biological impact. The results of that analysis, summarized on the preceding tables and in the discussion below, determined that the proposed change in land uses would not cause a significant biological impact. The parcels outside of the Focus Areas are summarized in Appendix A. None of the parcels outside of the Focus Areas with a non-open space land use designation have sensitive habitat or any indication that a biological impact would occur if developed.

The inventory of existing conditions determined that no parcels with a proposed land use designation that allows for development (i.e. not an open space designation) currently has sensitive vegetation. All parcels currently have ruderal vegetation and little to no biological value. Therefore, there is no current indication that future development in accordance with the

proposed General Plan Update would have significant unavoidable biological impacts. However, a complete biological analysis of each parcel has not been conducted. Therefore, there is a potential that site-specific analysis would reveal biological resources not identified in this report. Additionally, biological resources change over time. Therefore, there is a potential for biological impacts associated with implementation of the General Plan Update that could require mitigation.

4.1 Overall City Biological Inventory

The parcels identified as open space or vacant parcels within the SOI area propose no change in General Plan Land Use Designations; therefore, no impacts would occur from the proposed General Plan Update. The remaining balance of parcels identified as open space or vacant parcels within the City limits propose no change in General Plan Land Use Designation.

The parcels outside of the Focus Areas are summarized in Appendix A. Since none of the parcels outside of the Focus Areas have a proposed land use change as part of this General Plan Update, they are not included in the following discussion. However, it is important to note that none of the parcels outside of the Focus Areas with a non-open space land use designation have sensitive habitat, native habitat, or any indication at this time that a biological impact would occur if developed.

No sensitive or native habitat occur within the non-open space land use designated parcels within the SOI and City limits; however, a complete site-specific biological analysis was not conducted. Therefore, there may be potential for biological impacts, such as to nesting birds.

4.2 Focus Areas Impacts

4.2.1 South Main Street

The South Main Street Focus Area does not contain any Open Space designated parcels or vacant lots. Furthermore, due to the built nature of this Focus Area, no impacts will occur with the proposed changes in General Plan Designations.

4.2.2 Grand Avenue/17th Street

Of the total eleven parcels identified within the Grand Avenue/17th Street Focus Area, nine parcels are changed as part of the General Plan Update. The nine parcels would change the land use designation to Urban Neighborhood. Since the changes proposed are developable uses (Professional and Administration Office, General Commercial and Low Density Residential) to Industrial, both which are developable land uses, no impact would occur from the proposed land use change. Further, the vegetation community observed within these parcels is disturbed, which is not native or considered a sensitive vegetation community. Since the nine parcels for the

proposed General Plan Update changes occur to non-native communities, these impacts are not considered significant. The remaining two parcels are designated Open Space and the proposed General Plan Update does not propose any revisions to the existing land use designation; therefore, no impacts will occur.

4.2.3 West Santa Ana Boulevard

All parcels identified within the West Santa Ana Boulevard Focus Area are designated Open Space. The proposed General Plan Update does not propose any revisions to the existing land use designations; therefore, no impact would occur.

4.2.4 55 Freeway/Dyer Road

The parcels identified within 55 Freeway/Dyer Road Focus Area contain three parcels that have General Plan Land Use Designation changes. These three parcels, City identification numbers 78706, 78707, and 7808, are currently designated as Professional and Administrative Office. The proposed General Plan Update would change the land use designation for these parcels to Industrial. Since the proposed change in land use designation from Professional and Administration Office to Industrial are both developable land uses, no impact would occur from the proposed land use change. Furthermore, the vegetation community observed within these parcels is ruderal, which is not native or considered a sensitive vegetation community. Since the three parcels for the proposed General Plan Update changes occur to non-native communities, these impacts are not considered significant. The remaining parcels identified within the 55 Freeway/Dyer Road Focus Area do not have a change to General Plan land use designation and therefore, no impacts will occur.

4.2.5 South Bristol Street

All parcels identified within South Bristol Street Focus Area are designated Open Space. The proposed General Plan Update does not propose any revisions to the existing land use designations; therefore, no impacts would occur.

While the inventory of existing conditions determined that no parcels with a proposed land use designation that allows for development (i.e. not an open space designation) currently has sensitive vegetation. These parcels currently have ruderal vegetation and little to no biological value. Therefore, there is no current indication that future development in accordance with the General Plan Update would have significant unavoidable biological impacts. However, a complete biological analysis of each parcel has not been conducted and there is a potential for biological impacts, such as to nesting birds, that could require mitigation.

4.3 Regulatory Requirements and Mitigation Measures

Regulatory requirements that would protect biological resources include:

- The Federal Endangered Species Act (FESA): THE FESA protects and conserves any species of plant or animal that is endangered or threatened with extinction, as well as the habitats where these species are found. Take of endangered species is prohibited under Section 9 of the FESA.
- Clean Water Act (CWA): The United States Army Corps of Engineers (Corps) regulates discharge of dredged or fill material into “waters of the United States.” Any filling or dredging within waters of the United States requires a permit pursuant to the CWA, which entails assessment of potential adverse impacts to Corps wetlands and jurisdictional waters.
- California Fish and Game Code: Section 1600 of the California Fish and Game Code requires a project proponent to notify the California Department of Fish and Wildlife (CDFW) of any proposed alteration of streambeds, rivers, and lakes. Additionally, migratory nongame native bird species are protected by the California Fish and Game Code, Sections 3503, 3503.5, and 3513, which prohibit the take of all birds and their active nests. Compliance with the California Fish and Game Code ensures that if construction occurs during the avian breeding season, appropriate measures would be taken to avoid impacts to nesting birds. The Code requires preconstruction surveys. The surveys would be conducted no more than three days prior to construction activities. If an active bird nest is observed, the surveyor/biologist determines the appropriate buffer around the nest. Buffers are determined on species-specific requirements and nest location. No construction activity would occur within the buffer zone until the nest is vacated, juveniles have fledged, and there is no evidence of a second attempt at nesting.
- The California Endangered Species Act (CESA): The CESA generally parallels the main provisions of the FESA. Its intent is to prohibit take and protect state-listed endangered and threatened species of fish, wildlife, and plants.
- Santa Ana Municipal Code: Chapter 33, Article VII, *Regulation of the Planting, Maintenance, and Removal of Trees*, of the City’s municipal code establishes regulations and standards necessary to protect publicly owned trees.

While regulatory requirements would protect potential biological resources the following mitigation measure is required to reduce the impacts to less than significant:

Mitigation Measure 1: For development or redevelopment projects that would disturb vegetated land and is subject to CEQA, a qualified biologist shall conduct an initial screening to determine whether a site-specific biological resource report is warranted. If needed, a qualified biologist shall conduct a field survey for the site and prepare a biological resource assessment for the project, including an assessment of potential impacts to sensitive species, habitat and jurisdictional waters. The report shall recommend mitigation measures as appropriate, to avoid or limit potential biological resource impacts to less than significant.

5.0 Summary

CSLS identified a total of 499 parcels designated as Open Space land use within the City boundary. An additional 135 parcels were identified as vacant, or contain natural resources, and not designated Open Space.

In addition to those parcels identified within the City boundary, an additional 4 parcels, consisting of 83.37 acres, were identified as vacant parcels located outside of the City boundary but within the SOI boundary. The SOI parcels include vacant parcels found within the concrete lined Santa Ana River.

Of the total parcels identified, the CSLS inventory identified a total of 59 parcels, either vacant or designated open space, within the five specified focus areas. The 59 parcels within the five focused areas total 164.42 acres of open space and vacant parcels. Of those 59 parcels, 47 parcels are designated Open Space by the existing General Plan Land Use Map. With the proposed General Plan Update all 47 parcels remain designated Open Space. Therefore, no designated open space would change to developable land uses and no impacts would occur. The remaining twelve parcels currently have developable land use designations (Professional and Administrative Office, General Commercial, or Low Density Residential) and are proposed to change to other developable land use designations (Industrial and Urban Neighborhood). Since both the existing and proposed land use designations permit developable land uses, no impacts would occur.

While the inventory of existing conditions determined that no parcels with a proposed land use designation that allows for development (i.e. not an open space designation) currently has sensitive vegetation. All parcels currently have ruderal vegetation and little to no biological value. Therefore, there is no current indication that future development of the vacant parcels would have significant unavoidable biological impacts. However, a complete biological analysis of each parcel has not been conducted and there is a potential for biological impacts, such as to nesting

birds, that could require mitigation. Regulatory requirements and Mitigation Measure 1 would reduce impacts to less than significant.

If you have any questions, please feel free to contact me at bbernard@carlsonsls.com or at (916) 218-2644.

Sincerely,



Brianna Bernard
Project Manager

Enclosures

Figures

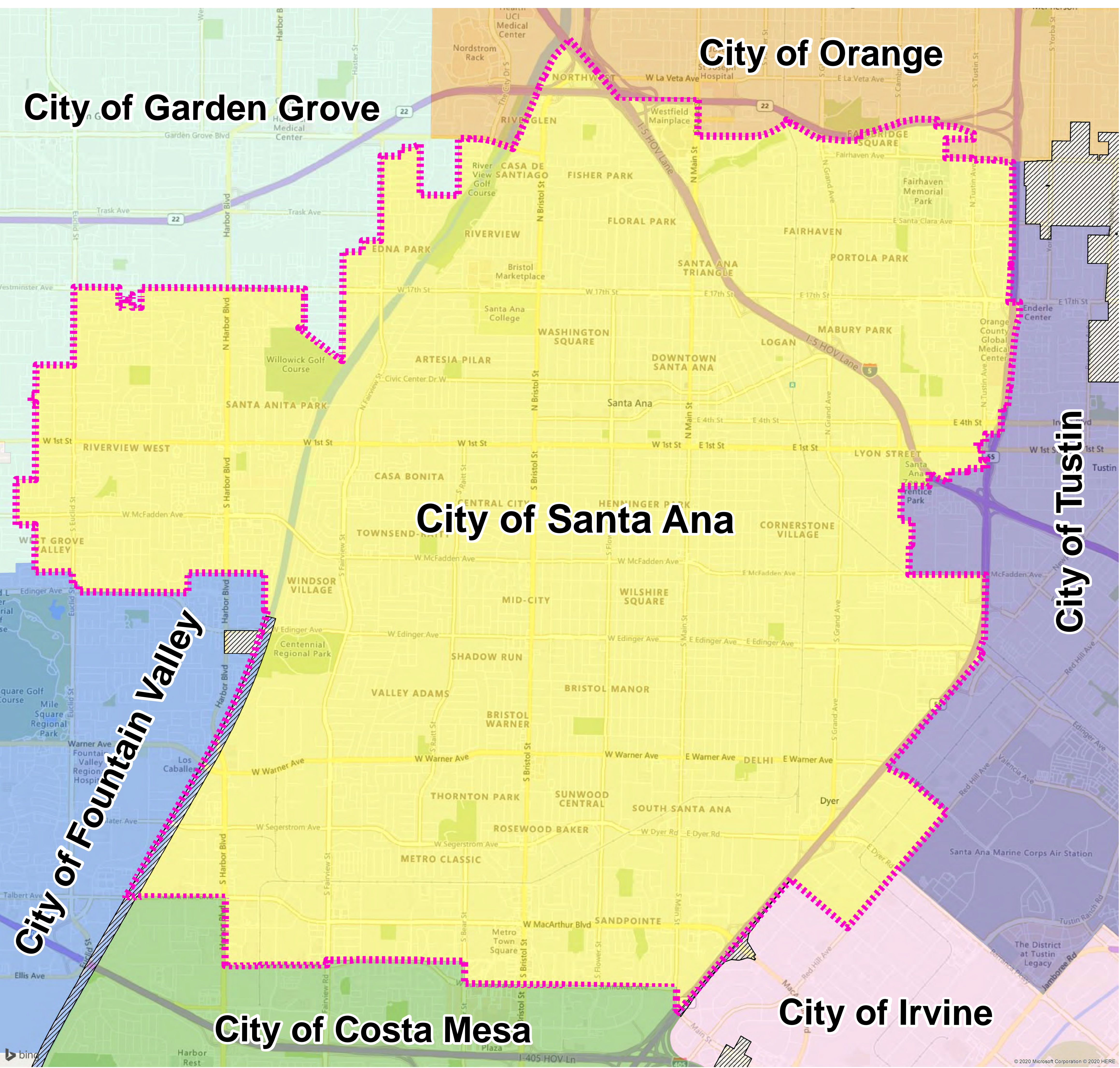
- Figure 1: Site Location Map
- Figure 2: Study Area Map
- Figure 3: General Plan Designated Open Space Parcels and Vacant Parcels
- Figure 4: Santa Ana River Sphere of Influence Open Space Inventory
- Figure 5: South Main Street Focus Area Open Space Inventory
- Figure 6: Grand Avenue/ 17th Street Focus Area Open Space Inventory
- Figure 7: West Santa Ana Boulevard Focus Area Open Space Inventory
- Figure 8: 55 Freeway/Dyer Road Focus Area Open Space Inventory
- Figure 9: South Bristol Street Focus Area Open Space Inventory

Attachments

- Attachment A: Citywide Biological Inventory Excel Sheet

d:\carlson sls dropbox\projects\placeworks\city of santa ana\biology\2020-04-07 bio inventory santa ana results letter_clean.docx

Figures

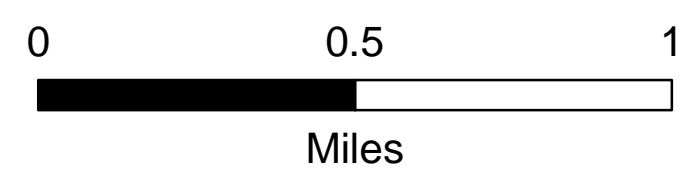
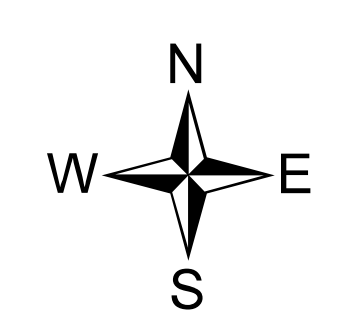


Legend

- City of Santa
- Sphere of Influence

Surrounding Cities

- Costa Mesa
- Fountain Valley
- Garden Grove
- Irvine
- Orange
- Tustin
- Unincorporated County of Orange





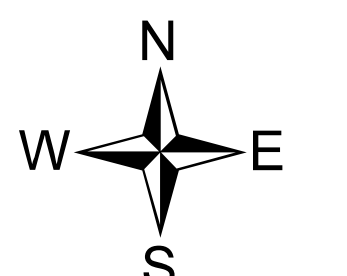
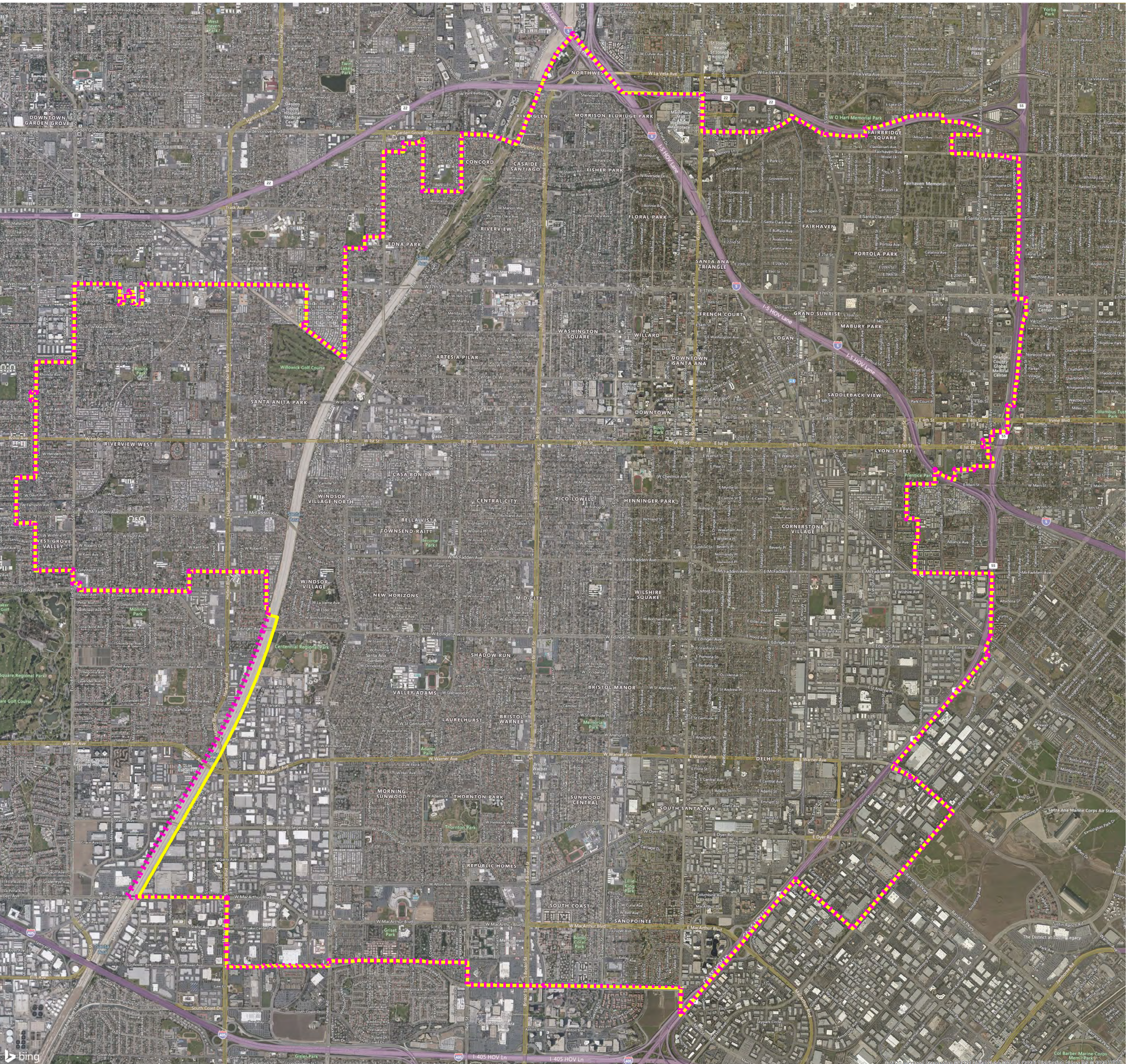
Created: June 24, 2019

Location Map

Figure 1

Legend

-  City of Santa Ana Boundary
-  Sphere of Influence




Created: June 24, 2019

Study Area Map

Figure 2

General Plan Designated Open Space Parcels and Vacant Parcels

 Sphere of Influence

 Santa Ana City
Boundary


 Existing Plans

Working Focus Areas

 55 Freeway/Dyer Road

 Grand Avenue/17th
Street


 South Main Street

 West Santa Ana
Boulevard

 South Bristol Street

Habitat Classification

 Riparian

 Unvegetated
Streambed

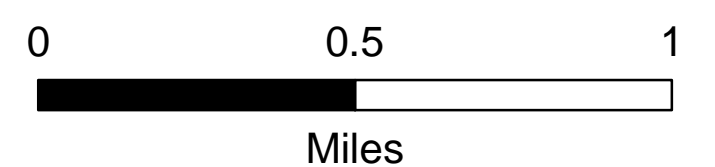
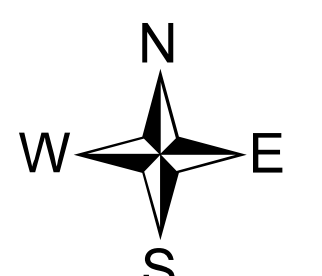
 Oak Woodland

 Ornamental

 Ruderal

 Disturbed

 Developed



Created: April 2, 2020

Open Space Inventory

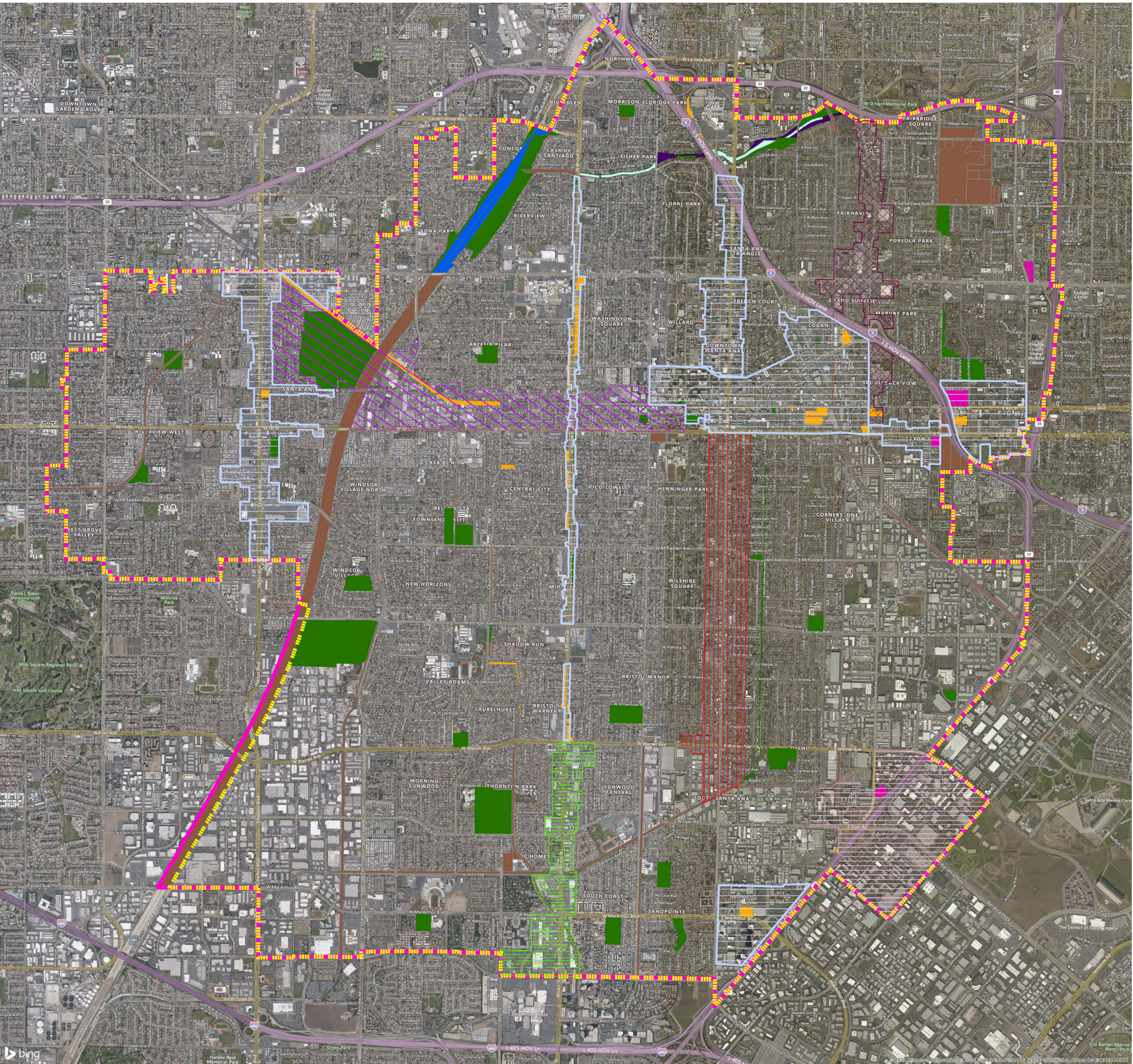
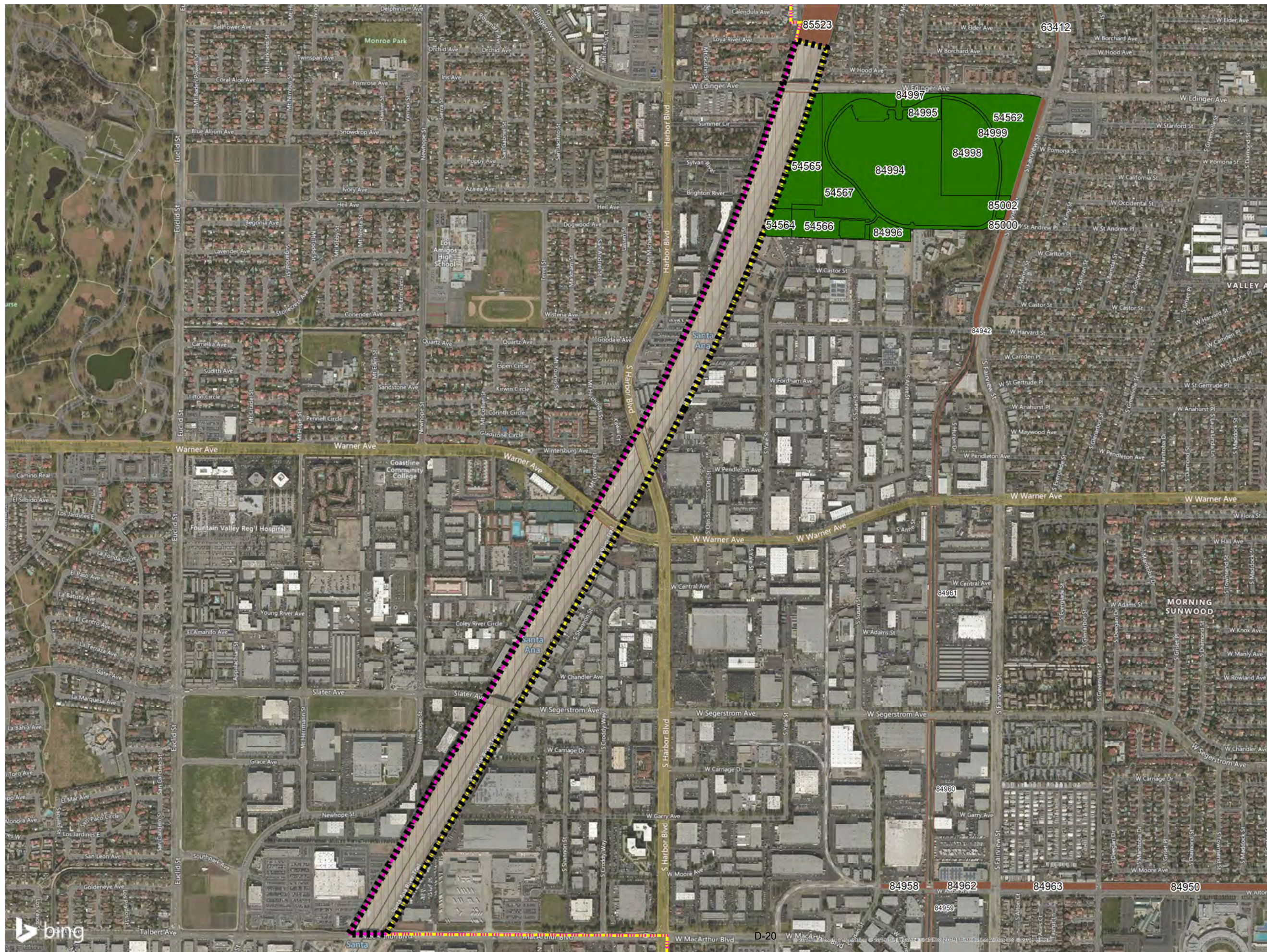


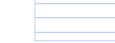


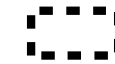
Figure 3



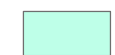





General Plan Open Space Inventory

-  Sphere of Influence
-  Santa Ana City Boundary
-  Existing Plans





Sphere of Influence

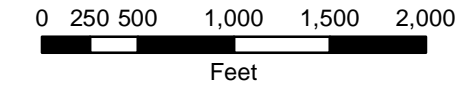
-  Santa Ana River

General Plan Designated Open Space Habitat Classification

-  Riparian
-  Unvegetated Streambed
-  Oak Woodland
-  Ornamental
-  Ruderal
-  Disturbed
-  Developed

Vacant Parcels Non-Open Space Designated Habitat Classification

-  Ornamental
-  Ruderal
-  Disturbed
-  Developed

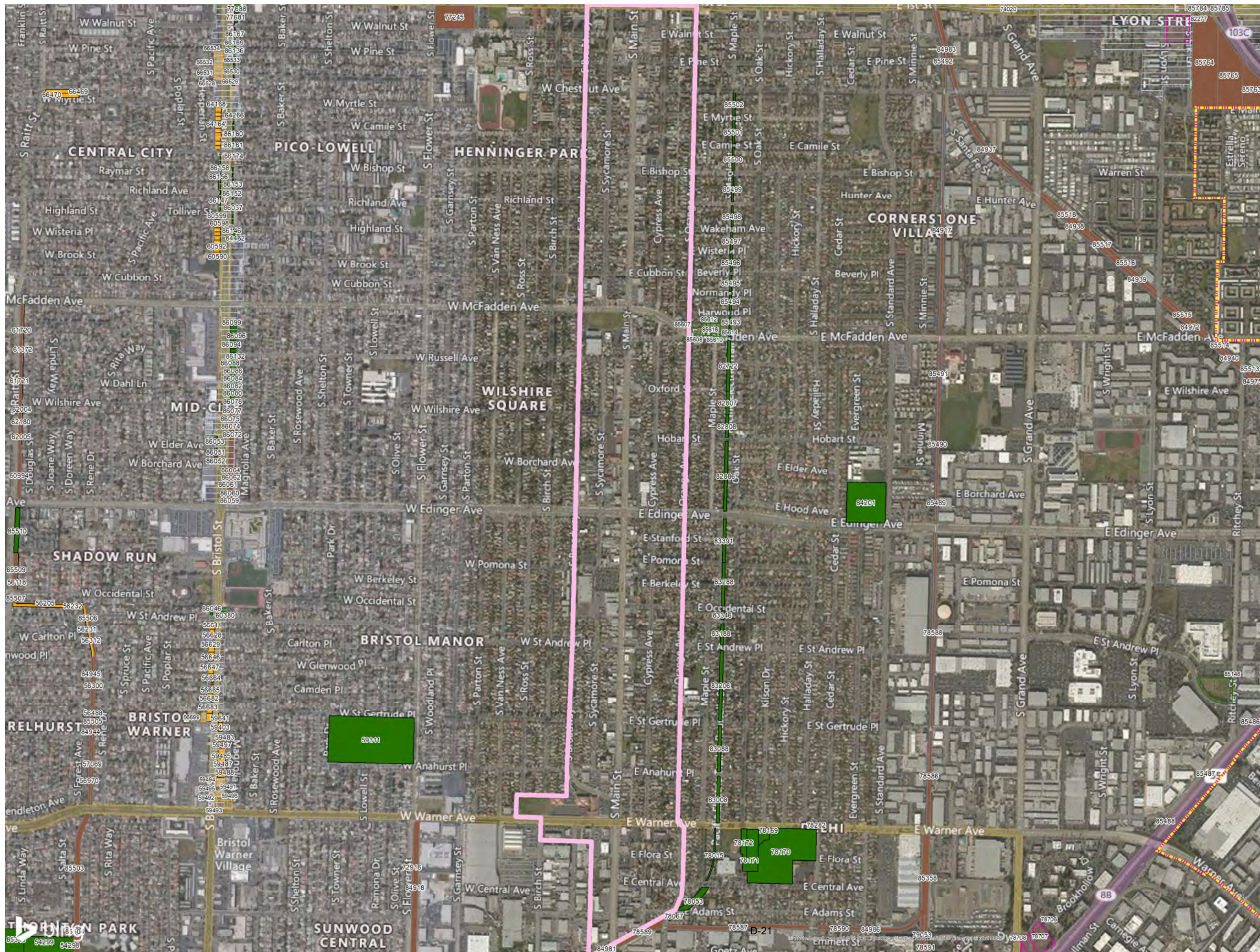


Created: June 20, 2019




Santa Ana River
Sphere of Influence
Open Space Inventory




Figure 4



General Plan Open Space Inventory





-  Sphere of Influence
-  Santa Ana City
-  Existing Plans

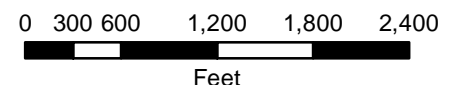
- ### Working Focus Area
-  South Main Street

General Plan Designated Open Space Habitat Classification

-  Riparian
-  Unvegetated Streambed
-  Oak Woodland
-  Ornamental
-  Ruderal
-  Disturbed
-  Developed

Vacant Parcels Non-Open Space Designated Habitat Classification

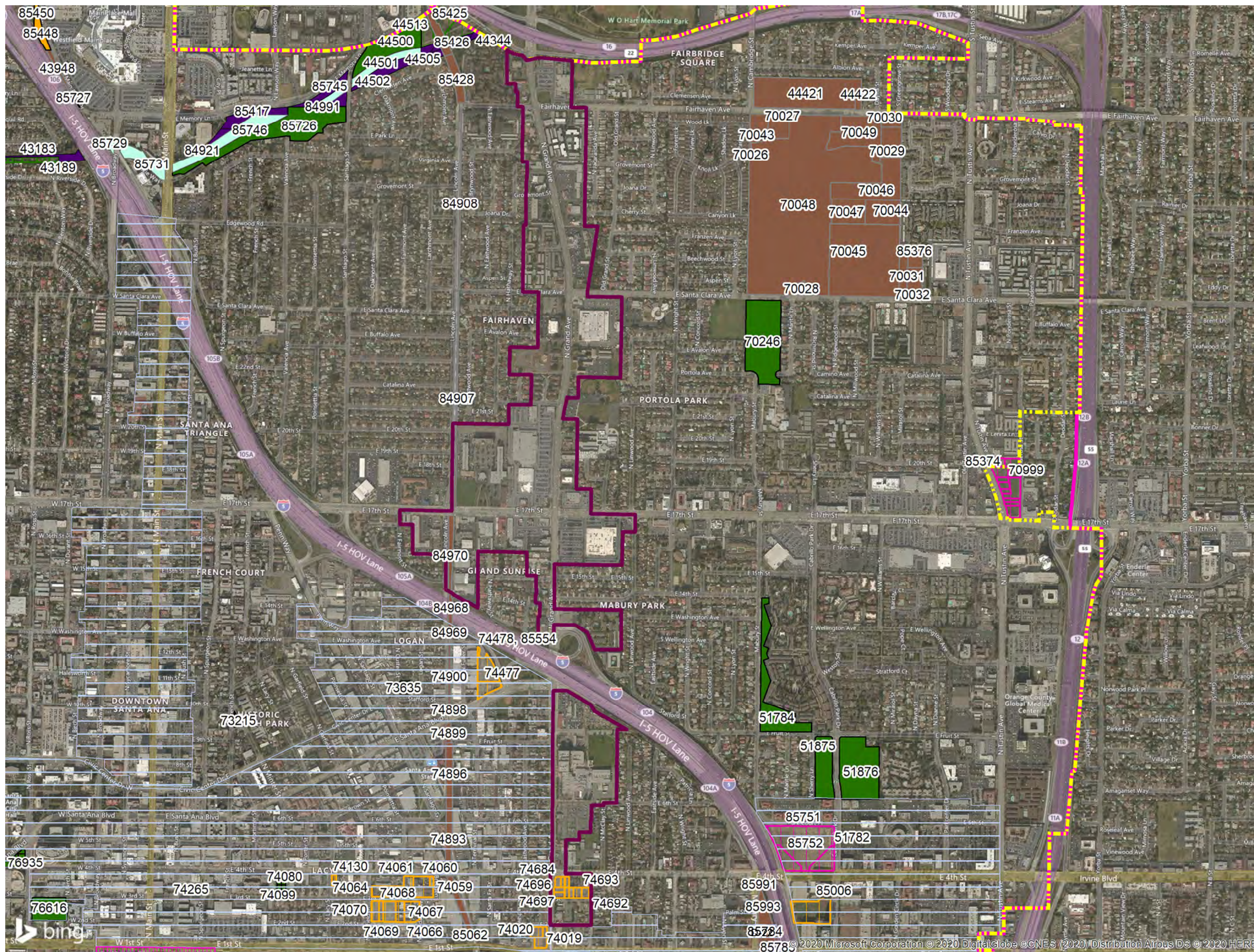
-  Ornamental
-  Ruderal
-  Disturbed
-  Developed



Created: April 1, 2020

South Main Street
Focus Area
Open Space Inventory

Figure 5



General Plan Open Space Inventory

- Santa Ana City Boundary
- Sphere of Influence
- Existing Plans

Working Focus Area

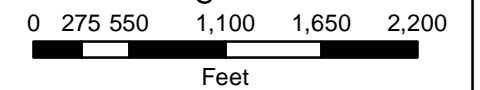
- Grand Avenue/17th Street

General Plan Designated Open Space Habitat Classification

- Riparian
- Unvegetated Streambed
- Oak Woodland
- Ornamental
- Ruderal
- Disturbed
- Developed

Vacant Parcels Non-Open Space Designated Habitat Classification

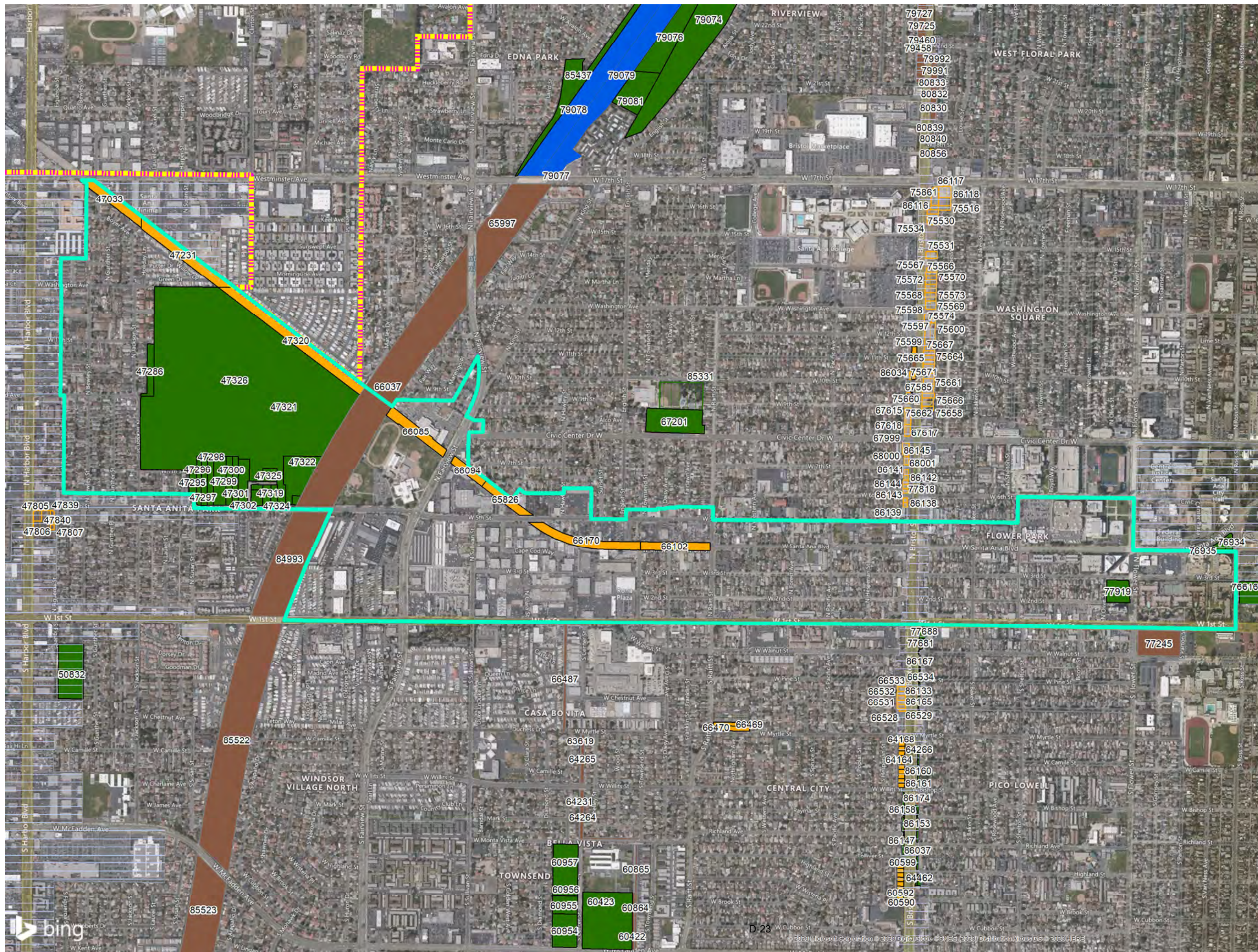
- Ornamental
- Ruderal
- Disturbed
- Developed





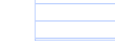
Created: April 1, 2020


Grand Avenue/17th Street
Focus Area
Open Space Inventory

Figure 6



General Plan Open Space Inventory





-  Sphere of Influence
-  Santa Ana City Boundary
-  Existing Plans

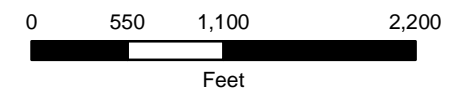
- ### Working Focus Area
-  West Santa Ana Boulevard

General Plan Designated Open Space Habitat Classification

-  Riparian
-  Unvegetated Streambed
-  Oak Woodland
-  Ornamental
-  Ruderal
-  Disturbed
-  Developed

Vacant Parcels Non-Open Space Designated Habitat Classification

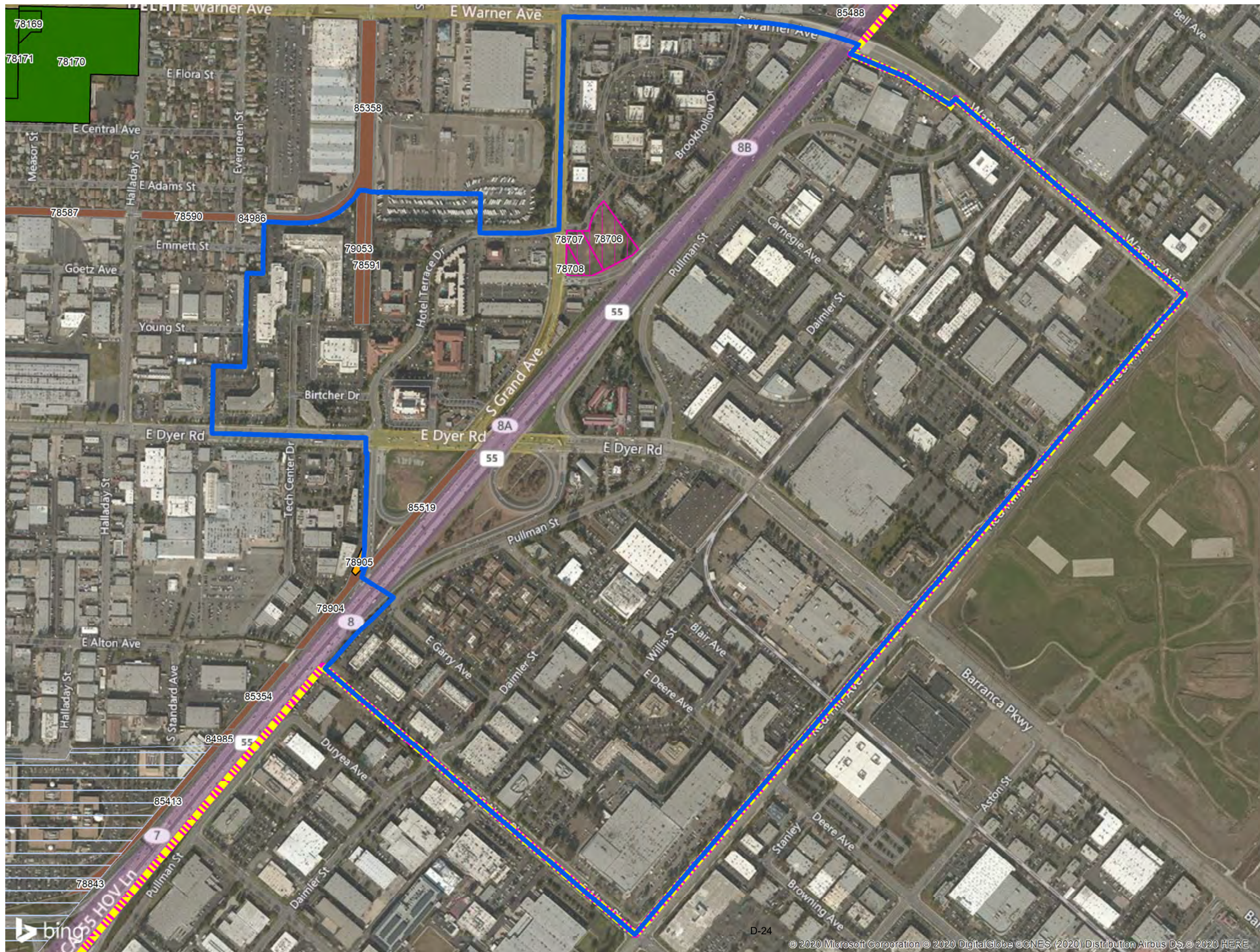
-  Ornamental
-  Ruderal
-  Disturbed
-  Developed






Created: April 1, 2020

West Santa Ana Boulevard
Focus Area
Open Space Inventory


Figure 7



General Plan Open Space Inventory

-  Sphere of Influence
-  Santa Ana City Boundary
-  Existing Plans





Working Focus Area

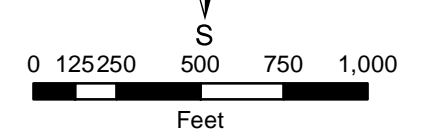
-  55 Freeway/Dyer Road

General Plan Designated Open Space Habitat Classification

-  Riparian
-  Unvegetated Streambed
-  Oak Woodland
-  Ornamental
-  Ruderal
-  Disturbed
-  Developed

Vacant Parcels Non-Open Space Designated Habitat Classification

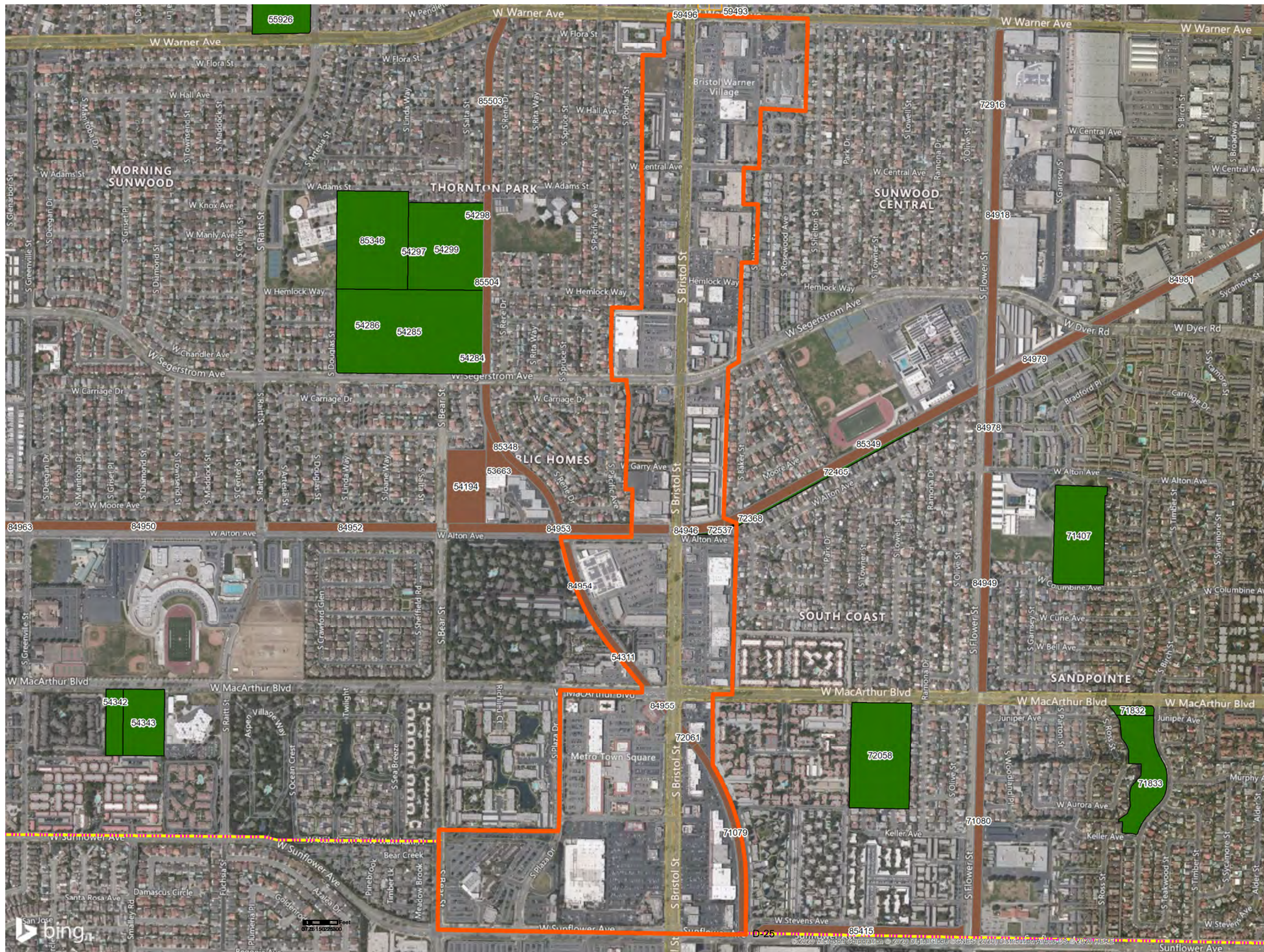
-  Ornamental
-  Ruderal
-  Disturbed
-  Developed






Created: April 1, 2020


55 Freeway/Dyer Road
Focus Area
Open Space Inventory

Figure 8



General Plan Open Space Inventory

-  Sphere of Influence
-  Santa Ana City Boundary
-  Existing Plans

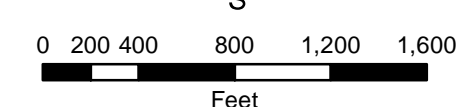
- ### Working Focus Area
-  South Bristol Street

General Plan Designated Open Space Habitat Classification

-  Riparian
-  Unvegetated Streambed
-  Oak Woodland
-  Ornamental
-  Ruderal
-  Disturbed
-  Developed

Vacant Parcels Non-Open Space Designated Habitat Classification

-  Ornamental
-  Ruderal
-  Disturbed
-  Developed



Created: April 1, 2020

South Bristol Street
Focus Area
Open Space Inventory

Figure 9

Attachment A: Citywide Inventory

	City Identification Number	Existing General Plan Land Use Designation	General Plan Land Use	Land Use	Habitat Classification	Acreage	Focus Area Location
1	43089	OS	Open Space	Park/Trail adjacent to Santiago Creek	Oak Woodland	3.79	
2	43948	OS	Open Space	Concrete lined Channel	Developed	0.45	
3	43971	OS	Open Space	River View Golf Course	Ornamental	0.00	
4	44055	OS	Open Space	Neighborhood Park	Ornamental	0.15	
5	44056	OS	Open Space	Neighborhood Park	Ornamental	0.15	
6	44057	OS	Open Space	Neighborhood Park	Ornamental	0.15	
7	44058	OS	Open Space	Neighborhood Park	Ornamental	0.15	
8	44060	OS	Open Space	Neighborhood Park	Ornamental	0.17	
9	44061	OS	Open Space	Neighborhood Park	Ornamental	0.15	
10	44062	OS	Open Space	Neighborhood Park	Ornamental	0.16	
11	44063	OS	Open Space	Neighborhood Park	Ornamental	0.19	
12	44094	OS	Open Space	River View Golf Course	Ornamental	0.26	
13	44110	OS	Open Space	Morrison Park - Tennis Courts	Developed	1.08	
14	44258	OS	Open Space	Morrison Park - Ornamental	Ornamental	4.79	
15	44262	OS	Open Space	Santiago Creek Trail	Oak Woodland	0.55	
16	44421	OS	Open Space	Cemetery	Developed	10.32	
17	44422	OS	Open Space	Cemetery	Developed	0.36	
18	44500	OS	Open Space	Santiago Creek Trail	Ornamental	4.60	
19	44501	OS	Open Space	Santiago Creek	Riparian	1.75	
20	44502	OS	Open Space	Santiago Creek Trail	Oak Woodland	1.99	
21	44503	OS	Open Space	Santiago Creek Trail	Oak Woodland	0.37	
22	44504	OS	Open Space	Santiago Creek Trail	Oak Woodland	0.16	
23	44505	OS	Open Space	Santiago Creek Trail	Oak Woodland	0.47	
24	45365	OS	Open Space	Rosita Park	Ornamental	3.86	
25	45918	OS	Open Space	River View Golf Course	Ornamental	1.96	
26	47033	OS	Open Space	Vacant	Disturbed	2.05	West Santa Ana Boulevard Focus Area
27	47231	OS	Open Space	Vacant	Disturbed	3.55	West Santa Ana Boulevard Focus Area
28	47286	OS	Open Space	Willowick Golf Course	Ornamental	1.23	West Santa Ana Boulevard Focus Area
29	47295	OS	Open Space	Willowick Golf Course	Ornamental	0.52	West Santa Ana Boulevard Focus Area
30	47296	OS	Open Space	Willowick Golf Course	Ornamental	0.74	West Santa Ana Boulevard Focus Area
31	47297	OS	Open Space	Willowick Golf Course	Ornamental	1.02	West Santa Ana Boulevard Focus Area
32	47298	OS	Open Space	Willowick Golf Course	Ornamental	1.01	West Santa Ana Boulevard Focus Area
33	47299	OS	Open Space	Willowick Golf Course	Ornamental	2.02	West Santa Ana Boulevard Focus Area
34	47300	OS	Open Space	Willowick Golf Course	Ornamental	1.01	West Santa Ana Boulevard Focus Area
35	47301	OS	Open Space	Willowick Golf Course	Ornamental	0.96	West Santa Ana Boulevard Focus Area
36	47302	OS	Open Space	Willowick Golf Course	Ornamental	1.58	West Santa Ana Boulevard Focus Area
37	47317	OS	Open Space	Willowick Golf Course	Ornamental	0.19	West Santa Ana Boulevard Focus Area
38	47318	OS	Open Space	Willowick Golf Course	Ornamental	0.60	West Santa Ana Boulevard Focus Area
39	47319	OS	Open Space	Willowick Golf Course	Ornamental	0.56	West Santa Ana Boulevard Focus Area
40	47320	OS	Open Space	Vacant	Disturbed	5.65	West Santa Ana Boulevard Focus Area
41	47321	OS	Open Space	Willowick Golf Course	Ornamental	0.02	West Santa Ana Boulevard Focus Area
42	47322	OS	Open Space	Willowick Golf Course	Ornamental	3.78	West Santa Ana Boulevard Focus Area
43	47323	OS	Open Space	Willowick Golf Course	Ornamental	0.20	West Santa Ana Boulevard Focus Area

	City Identification Number	Existing General Plan Land Use Designation	General Plan Land Use	Land Use	Habitat Classification	Acreage	Focus Area Location
44	47324	OS	Open Space	Willowick Golf Course	Ornamental	0.45	West Santa Ana Boulevard Focus Area
45	47325	OS	Open Space	Willowick Golf Course	Ornamental	0.63	West Santa Ana Boulevard Focus Area
46	47326	OS	Open Space	Willowick Golf Course	Ornamental	94.44	West Santa Ana Boulevard Focus Area
47	47527	OS	Open Space	Concrete Channel	Developed	1.16	
48	48973	OS	Open Space	RipRap Lined Channel	Developed	1.64	
49	49597	OS	Open Space	Heritage Park	Ornamental	4.70	
50	49739	OS	Open Space	Heritage Park	Ornamental	1.82	
51	49817	OS	Open Space	Concrete Channel	Developed	0.16	
52	50832	OS	Open Space	Santa Anita Park	Ornamental	4.47	
53	51784	OS	Open Space	Mabury Park	Ornamental	5.46	
54	51875	OS	Open Space	Cabrillo Park	Ornamental	3.61	
55	51876	OS	Open Space	Cabrillo Park	Ornamental	7.60	
56	53663	OS	Open Space	Water District Buidlings	Developed	1.30	
57	54194	OS	Open Space	Water District Buildings	Developed	5.00	
58	54284	OS	Open Space	Thornton Park	Ornamental	0.01	
59	54285	OS	Open Space	Thornton Park	Ornamental	21.31	
60	54286	OS	Open Space	Thornton Park	Ornamental	0.03	
61	54297	OS	Open Space	Thornton Park	Ornamental	0.01	
62	54298	OS	Open Space	Thornton Park	Ornamental	0.01	
63	54299	OS	Open Space	Thornton Park	Ornamental	11.34	
64	54311	OS	Open Space	Concrete Channel	Developed	1.05	South Bristol Street Focus Area
65	54342	OS	Open Space	Grislet Park	Ornamental	2.00	
66	54343	OS	Open Space	Grislet Park	Ornamental	4.79	
67	54562	OS	Open Space	Centennial Regional Park	Ornamental	9.39	
68	54564	OS	Open Space	Centennial Regional Park	Ornamental	1.81	
69	54565	OS	Open Space	Centennial Regional Park	Ornamental	8.60	
70	54566	OS	Open Space	Centennial Regional Park	Ornamental	3.51	
71	54567	OS	Open Space	Centennial Regional Park	Ornamental	8.83	
72	55926	OS	Open Space	Adams Park	Ornamental	5.68	
73	56118	OS	Open Space	Channel R/W	Disturbed	0.09	
74	56205	OS	Open Space	Concrete Channel	Developed	0.36	
75	56231	OS	Open Space	Channel R/W	Disturbed	0.47	
76	56232	OS	Open Space	Channel R/W	Disturbed	0.84	
77	56290	OS	Open Space	Concrete Channel	Developed	0.10	
78	56300	OS	Open Space	Concrete/Riprap Lined Channel	Developed	0.50	
79	56312	OS	Open Space	Concrete/Riprap Lined Channel	Developed	0.33	
80	56488	OS	Open Space	Concrete/Riprap Lined Channel	Developed	0.04	
81	56611	OS	Open Space	Vacant	Disturbed	0.19	
82	56628	OS	Open Space	Vacant	Disturbed	0.19	
83	56629	OS	Open Space	Vacant	Disturbed	0.19	
84	56646	OS	Open Space	Vacant	Disturbed	0.19	
85	56647	OS	Open Space	Vacant	Disturbed	0.17	
86	56664	OS	Open Space	Vacant	Disturbed	0.16	

	City Identification Number	Existing General Plan Land Use Designation	General Plan Land Use	Land Use	Habitat Classification	Acreage	Focus Area Location
87	56665	OS	Open Space	Vacant	Disturbed	0.16	
88	56682	OS	Open Space	Vacant	Disturbed	0.16	
89	56683	OS	Open Space	Vacant	Disturbed	0.16	
90	56970	OS	Open Space	Riprap Lined Channel	Developed	0.46	
91	57069	OS	Open Space	Riprap Lined Channel	Developed	0.74	
92	59311	OS	Open Space	Memorial Park	Ornamental	15.49	
93	59403	OS	Open Space	Vacant	Disturbed	0.15	
94	59483	OS	Open Space	Vacant	Disturbed	0.12	
95	59484	OS	Open Space	Vacant	Disturbed	0.14	
96	59485	OS	Open Space	Vacant	Disturbed	0.14	
97	59486	OS	Open Space	Vacant	Disturbed	0.15	
98	59487	OS	Open Space	Developed	Developed	0.15	
99	59488	OS	Open Space	Developed	Developed	0.15	
100	59489	OS	Open Space	Vacant	Disturbed	0.13	
101	59497	OS	Open Space	Developed	Developed	0.26	
102	59641	OS	Open Space	Vacant	Disturbed	0.15	
103	60380	OS	Open Space	Park	Ornamental	0.15	
104	60422	OS	Open Space	Concrete Channel	Developed	0.46	
105	60423	OS	Open Space	Jerome Park	Ornamental	9.37	
106	60590	OS	Open Space	Vacant	Disturbed	0.11	
107	60591	OS	Open Space	Vacant	Disturbed	0.10	
108	60592	OS	Open Space	Vacant	Disturbed	0.10	
109	60593	OS	Open Space	Vacant	Disturbed	0.10	
110	60594	OS	Open Space	Vacant	Disturbed	0.10	
111	60595	OS	Open Space	Vacant	Disturbed	0.10	
112	60596	OS	Open Space	Vacant	Disturbed	0.10	
113	60597	OS	Open Space	Vacant	Disturbed	0.10	
114	60598	OS	Open Space	Vacant	Disturbed	0.10	
115	60599	OS	Open Space	Vacant	Disturbed	0.10	
116	60864	OS	Open Space	Concrete Channel	Developed	0.31	
117	60865	OS	Open Space	Concrete Channel	Developed	0.27	
118	60954	OS	Open Space	Jerome Park	Ornamental	2.73	
119	60955	OS	Open Space	Jerome Park	Ornamental	1.49	
120	60956	OS	Open Space	Jerome Park	Ornamental	0.62	
121	60957	OS	Open Space	Jerome Park	Ornamental	3.72	
122	60994	OS	Open Space	Riprap Channel	Developed	0.69	
123	61372	OS	Open Space	Channel R/W	Disturbed	0.28	
124	61720	OS	Open Space	Riprap Channel	Developed	0.64	
125	61721	OS	Open Space	Riprap Channel	Developed	0.48	
126	62004	OS	Open Space	Channel R/W	Disturbed	0.03	
127	62005	OS	Open Space	Channel R/W	Disturbed	0.10	
128	62180	OS	Open Space	Riprap Channel	Developed	0.64	
129	62817	OS	Open Space	Park	Ornamental	10.48	

	City Identification Number	Existing General Plan Land Use Designation	General Plan Land Use	Land Use	Habitat Classification	Acreage	Focus Area Location
130	63029	OS	Open Space	Concrete Channel	Developed	0.66	
131	63412	OS	Open Space	Concrete Channel	Developed	0.70	
132	63619	OS	Open Space	Concrete Channel	Developed	0.11	
133	64158	OS	Open Space	Vacant	Disturbed	0.10	
134	64159	OS	Open Space	Vacant	Disturbed	0.10	
135	64160	OS	Open Space	Vacant	Disturbed	0.10	
136	64161	OS	Open Space	Vacant	Disturbed	0.10	
137	64162	OS	Open Space	Vacant	Disturbed	0.10	
138	64163	OS	Open Space	Vacant	Disturbed	0.10	
139	64164	OS	Open Space	Vacant	Disturbed	0.10	
140	64165	OS	Open Space	Vacant	Disturbed	0.10	
141	64166	OS	Open Space	Vacant	Disturbed	0.10	
142	64167	OS	Open Space	Vacant	Disturbed	0.10	
143	64168	OS	Open Space	Vacant	Disturbed	0.10	
144	64231	OS	Open Space	Concrete Channel	Developed	0.11	
145	64264	OS	Open Space	Concrete Channel	Developed	0.87	
146	64265	OS	Open Space	Concrete Channel	Developed	0.57	
147	64266	OS	Open Space	Linear Park	Ornamental	0.09	
148	64462	OS	Open Space	Linear Park	Ornamental	0.14	
149	64802	OS	Open Space	Linear Park	Ornamental	0.07	
150	65826	OS	Open Space	Vacant	Disturbed	1.45	West Santa Ana Boulevard Focus Area
151	65997	OS	Open Space	Concrete SAR	Developed	10.54	
152	66037	OS	Open Space	Concrete SAR	Developed	31.92	West Santa Ana Boulevard Focus Area (14.51 ac)
153	66085	OS	Open Space	Vacant	Disturbed	2.18	West Santa Ana Boulevard Focus Area
154	66094	OS	Open Space	Vacant	Disturbed	1.09	West Santa Ana Boulevard Focus Area
155	66102	OS	Open Space	Vacant	Disturbed	1.92	West Santa Ana Boulevard Focus Area
156	66170	OS	Open Space	Vacant	Disturbed	3.02	West Santa Ana Boulevard Focus Area
157	66469	OS	Open Space	Vacant	Disturbed	0.44	
158	66470	OS	Open Space	Vacant	Disturbed	0.57	
159	66487	OS	Open Space	Concrete Channel	Developed	0.89	
160	67201	OS	Open Space	El Salvador Park	Ornamental	4.56	
161	67474	OS	Open Space	Developed	Developed	0.16	
162	67507	OS	Open Space	Vacant	Disturbed	0.15	
163	67508	OS	Open Space	Vacant	Disturbed	0.16	
164	67553	OS	Open Space	Vacant	Disturbed	0.11	
165	70026	OS	Open Space	Cemetery	Developed	0.07	
166	70027	OS	Open Space	Cemetery	Developed	1.66	
167	70028	OS	Open Space	Cemetery	Developed	0.27	
168	70029	OS	Open Space	Cemetery	Developed	2.02	
169	70030	OS	Open Space	Cemetery	Developed	0.77	
170	70031	OS	Open Space	Cemetery	Developed	1.43	
171	70032	OS	Open Space	Cemetery	Developed	1.43	
172	70043	OS	Open Space	Cemetery	Developed	1.64	

	City Identification Number	Existing General Plan Land Use Designation	General Plan Land Use	Land Use	Habitat Classification	Acreage	Focus Area Location
173	70044	OS	Open Space	Cemetery	Developed	2.82	
174	70045	OS	Open Space	Cemetery	Developed	16.67	
175	70046	OS	Open Space	Cemetery	Developed	5.55	
176	70047	OS	Open Space	Cemetery	Developed	2.74	
177	70048	OS	Open Space	Cemetery	Developed	50.94	
178	70049	OS	Open Space	Cemetery	Developed	5.20	
179	70246	OS	Open Space	Portola Park	Ornamental	9.07	
180	71079	OS	Open Space	Concrete Channel	Developed	2.57	South Bristol Street Focus Area
181	71080	OS	Open Space	Riprap Channel	Developed	3.51	
182	71407	OS	Open Space	Little King Park	Ornamental	8.64	
183	71832	OS	Open Space	Sandpointe Park	Ornamental	0.68	
184	71833	OS	Open Space	Sandpointe Park	Ornamental	5.95	
185	72058	OS	Open Space	Bomo Coral Park	Ornamental	11.01	
186	72061	OS	Open Space	Concrete Channel - Parking lot	Developed	0.27	South Bristol Street Focus Area
187	72368	OS	Open Space	Bike Trail	Ornamental	0.09	
188	72465	OS	Open Space	Bike Trail	Ornamental	0.75	
189	72537	OS	Open Space	Linear Park	Ornamental	0.18	South Bristol Street Focus Area
190	72916	OS	Open Space	Concrete Channel	Developed	0.28	
191	73215	OS	Open Space	Park	Ornamental	0.17	
192	73635	OS	Open Space	Logan Park	Ornamental	0.41	
193	74079	OS	Open Space	Neighborhood Park	Ornamental	0.14	
194	74080	OS	Open Space	Neighborhood Park	Ornamental	0.14	
195	74094	OS	Open Space	Neighborhood Park	Ornamental	0.14	
196	74099	OS	Open Space	Neighborhood Park	Ornamental	0.14	
197	74265	OS	Open Space	Parking Lot	Developed	0.81	
198	74893	OS	Open Space	Railroad	Developed	1.27	
199	74896	OS	Open Space	Railroad	Developed	1.45	
200	74898	OS	Open Space	Railroad	Developed	0.07	
201	74899	OS	Open Space	Railroad	Developed	0.34	
202	74900	OS	Open Space	Railroad	Developed	0.53	
203	76616	OS	Open Space	Birch Park	Ornamental	2.66	
204	76934	OS	Open Space	Park	Ornamental	0.32	
205	76935	OS	Open Space	Park	Ornamental	0.60	
206	77245	OS	Open Space	Tennis Courts	Developed	3.54	
207	77681	OS	Open Space	Linear Park	Ornamental	0.06	
208	77682	OS	Open Space	Linear Park	Ornamental	0.04	
209	77688	OS	Open Space	Linear Park	Ornamental	0.23	
210	77818	OS	Open Space	Linear Park	Ornamental	0.08	
211	77919	OS	Open Space	Angels Community Park	Ornamental	1.72	West Santa Ana Boulevard Focus Area
212	78015	OS	Open Space	Pacific Electric Bike Trail	Ornamental	0.28	
213	78053	OS	Open Space	Pacific Electric Bike Trail	Ornamental	0.81	
214	78067	OS	Open Space	Turf	Ornamental	0.12	
215	78169	OS	Open Space	Delhi Park	Ornamental	0.49	

	City Identification Number	Existing General Plan Land Use Designation	General Plan Land Use	Land Use	Habitat Classification	Acreage	Focus Area Location
216	78170	OS	Open Space	Delhi Park	Ornamental	10.44	
217	78171	OS	Open Space	Delhi Park	Ornamental	2.14	
218	78172	OS	Open Space	Delhi Park	Ornamental	0.64	
219	78282	OS	Open Space	Sidewalk	Developed	0.01	
220	78586	OS	Open Space	Railroad	Developed	1.28	
221	78587	OS	Open Space	Railroad	Developed	2.15	
222	78588	OS	Open Space	Railroad	Developed	1.73	
223	78589	OS	Open Space	Railroad	Developed	1.43	
224	78590	OS	Open Space	Railroad	Developed	0.68	
225	78591	OS	Open Space	Railroad	Developed	0.77	55 Freeway/Dyer Road Focus Area (0.70 ac)
226	78843	OS	Open Space	Concrete Channel	Developed	0.43	
227	78904	OS	Open Space	Concrete Channel	Developed	0.66	55 Freeway/Dyer Road Focus Area (0.04 ac)
228	78905	OS	Open Space	Vacant	Disturbed	0.15	55 Freeway/Dyer Road Focus Area (0.07 ac)
229	79053	OS	Open Space	Railroad	Developed	1.08	55 Freeway/Dyer Road Focus Area (0.98 ac)
230	79072	OS	Open Space	River View Golf Course	Ornamental	0.35	
231	79073	OS	Open Space	Natural Bottom SAR	Unvegetated with areas of Riparian	2.50	
232	79074	OS	Open Space	River View Golf Course	Ornamental	27.88	
233	79075	OS	Open Space	River View Golf Course	Ornamental	0.64	
234	79076	OS	Open Space	River View Golf Course	Ornamental	6.60	
235	79077	OS	Open Space	Park - adjacent SAR	Ornamental	0.01	
236	79078	OS	Open Space	Natural Bottom SAR	Unvegetated with areas of Riparian	30.88	
237	79079	OS	Open Space	Natural/Concrete SAR	Unvegetated and Developed	14.27	
238	79081	OS	Open Space	River View Golf Course	Ornamental	3.64	
239	79084	OS	Open Space	River View Golf Course	Ornamental	7.80	
240	79085	OS	Open Space	Riprap Channel	Developed	5.68	
241	79217	OS	Open Space	Linear Park	Ornamental	0.17	
242	79218	OS	Open Space	Linear Park	Ornamental	0.16	
243	79219	OS	Open Space	Linear Park	Ornamental	0.16	
244	79220	OS	Open Space	Linear Park	Ornamental	0.18	
245	79284	OS	Open Space	Developed	Developed	0.14	
246	79285	OS	Open Space	Developed	Developed	0.14	
247	79286	OS	Open Space	Developed	Developed	0.14	
248	79288	OS	Open Space	Developed	Developed	0.16	
249	79452	OS	Open Space	Developed	Developed	0.14	
250	79453	OS	Open Space	Developed	Developed	0.14	
251	79454	OS	Open Space	Developed	Developed	0.14	
252	79455	OS	Open Space	Developed	Developed	0.14	
253	79456	OS	Open Space	Developed	Developed	0.14	
254	79457	OS	Open Space	Developed	Developed	0.14	
255	79458	OS	Open Space	Developed	Developed	0.14	
256	79459	OS	Open Space	Developed	Developed	0.14	
257	79460	OS	Open Space	Developed	Developed	0.14	
258	79461	OS	Open Space	Developed	Developed	0.14	

	City Identification Number	Existing General Plan Land Use Designation	General Plan Land Use	Land Use	Habitat Classification	Acreage	Focus Area Location
259	79462	OS	Open Space	Developed	Developed	0.14	
260	79642	OS	Open Space	Developed	Developed	0.14	
261	79725	OS	Open Space	Developed	Developed	0.14	
262	79726	OS	Open Space	Developed	Developed	0.14	
263	79727	OS	Open Space	Developed	Developed	0.14	
264	79728	OS	Open Space	Developed	Developed	0.14	
265	79729	OS	Open Space	Developed	Developed	0.14	
266	79730	OS	Open Space	Developed	Developed	0.14	
267	79731	OS	Open Space	Developed	Developed	0.14	
268	79732	OS	Open Space	Developed	Developed	0.14	
269	79733	OS	Open Space	Developed	Developed	0.20	
270	79745	OS	Open Space	River View Golf Course	Ornamental	0.26	
271	79854	OS	Open Space	River View Golf Course	Ornamental	0.69	
272	79990	OS	Open Space	Developed	Developed	0.17	
273	79991	OS	Open Space	Developed	Developed	0.17	
274	79992	OS	Open Space	Developed	Developed	0.17	
275	80829	OS	Open Space	Developed	Developed	0.16	
276	80830	OS	Open Space	Developed	Developed	0.17	
277	80831	OS	Open Space	Developed	Developed	0.17	
278	80832	OS	Open Space	Developed	Developed	0.17	
279	80833	OS	Open Space	Developed	Developed	0.17	
280	80839	OS	Open Space	Developed	Developed	0.16	
281	80840	OS	Open Space	Developed	Developed	0.17	
282	80856	OS	Open Space	Vacant	Disturbed	0.17	
283	82722	OS	Open Space	Pacific Electric Bike Trail	Ornamental	0.63	
284	82807	OS	Open Space	Pacific Electric Bike Trail	Ornamental	0.29	
285	82808	OS	Open Space	Pacific Electric Bike Trail	Ornamental	0.28	
286	82886	OS	Open Space	Pacific Electric Bike Trail	Ornamental	0.84	
287	83008	OS	Open Space	Pacific Electric Bike Trail	Ornamental	0.56	
288	83088	OS	Open Space	Pacific Electric Bike Trail	Ornamental	0.55	
289	83188	OS	Open Space	Pacific Electric Bike Trail	Ornamental	0.25	
290	83206	OS	Open Space	Pacific Electric Bike Trail	Ornamental	0.84	
291	83288	OS	Open Space	Pacific Electric Bike Trail	Ornamental	0.52	
292	83346	OS	Open Space	Pacific Electric Bike Trail	Ornamental	0.11	
293	83391	OS	Open Space	Pacific Electric Bike Trail	Ornamental	0.52	
294	84201	OS	Open Space	Madison Park	Ornamental	6.06	
295	84905	OS	Open Space	Channel	Developed	2.74	
296	84907	OS	Open Space	Railroad	Developed	0.99	Grand Avenue/17th Street Focus Area (0.40 ac)
297	84908	OS	Open Space	Railroad	Developed	0.84	
298	84914	OS	Open Space	Santiago Creek	Riparian	1.20	
299	84917	OS	Open Space	Railroad	Developed	2.26	
300	84918	OS	Open Space	Concrete Channel	Developed	5.19	
301	84921	OS	Open Space	Santiago Creek Park	Oak Woodland	0.38	

	City Identification Number	Existing General Plan Land Use Designation	General Plan Land Use	Land Use	Habitat Classification	Acreage	Focus Area Location
302	84924	OS	Open Space	Riprap Channel	Developed	4.30	
303	84925	OS	Open Space	Concrete Channel	Developed	0.23	
304	84926	OS	Open Space	Concrete Channel	Developed	1.09	
305	84929	OS	Open Space	Concrete Channel	Developed	1.49	
306	84937	OS	Open Space	Railroad	Developed	1.88	
307	84938	OS	Open Space	Railroad	Developed	1.35	
308	84939	OS	Open Space	Railroad	Developed	0.95	
309	84940	OS	Open Space	Railroad	Developed	0.60	
310	84944	OS	Open Space	Riprap Channel	Developed	0.43	
311	84945	OS	Open Space	Riprap Channel	Developed	0.46	
312	84946	OS	Open Space	Railroad	Developed	0.67	South Bristol Street Focus Area
313	84949	OS	Open Space	Riprap Channel	Developed	3.29	
314	84950	OS	Open Space	Railroad	Developed	3.48	
315	84952	OS	Open Space	Railroad	Developed	2.62	
316	84953	OS	Open Space	Railroad	Developed	3.45	South Bristol Street Focus Area (0.60 ac)
317	84954	OS	Open Space	Concrete Channel	Developed	1.30	South Bristol Street Focus Area
318	84955	OS	Open Space	Underground Channel - Turf	Developed	0.18	South Bristol Street Focus Area
319	84958	OS	Open Space	Railroad	Developed	0.64	
320	84962	OS	Open Space	Railroad	Developed	1.11	
321	84963	OS	Open Space	Railroad	Developed	1.84	
322	84967	OS	Open Space	Santiago Creek	Riparian	3.80	
323	84968	OS	Open Space	Railroad	Developed	0.26	
324	84969	OS	Open Space	Railroad	Developed	0.18	
325	84970	OS	Open Space	Railroad	Developed	1.16	Grand Avenue/17th Street Focus Area (1.07 ac)
326	84972	OS	Open Space	Railroad	Developed	0.85	
327	84975	OS	Open Space	Railroad	Developed	2.90	
328	84978	OS	Open Space	Riprap Channel	Developed	1.19	
329	84979	OS	Open Space	Railroad	Developed	1.76	
330	84981	OS	Open Space	Railroad	Developed	3.49	
331	84983	OS	Open Space	Railroad	Developed	1.24	
332	84985	OS	Open Space	Concrete Channel	Developed	0.14	
333	84986	OS	Open Space	Railroad	Developed	0.16	55 Freeway/Dyer Road Focus Area (0.01 ac)
334	84991	OS	Open Space	Santiago Creek	Riparian	0.83	
335	84993	OS	Open Space	Concrete SAR	Developed	12.62	
336	84994	OS	Open Space	Centennial Regional Park	Ornamental	30.97	
337	84995	OS	Open Space	Centennial Regional Park	Ornamental	8.07	
338	84996	OS	Open Space	Centennial Regional Park	Ornamental	1.89	
339	84997	OS	Open Space	Centennial Regional Park	Ornamental	0.87	
340	84998	OS	Open Space	Centennial Regional Park	Ornamental	12.90	
341	84999	OS	Open Space	Centennial Regional Park	Ornamental	1.10	
342	85000	OS	Open Space	Riprap Channel	Developed	3.35	
343	85002	OS	Open Space	Centennial Regional Park	Ornamental	0.65	
344	85062	OS	Open Space	Railroad	Developed	1.32	

	City Identification Number	Existing General Plan Land Use Designation	General Plan Land Use	Land Use	Habitat Classification	Acreage	Focus Area Location
345	85269	OS	Open Space	Riprap Channel	Developed	1.00	
346	85270	OS	Open Space	Concrete/Riprap Lined Channel	Developed	1.05	
347	85279	OS	Open Space	River View Golf Course	Ornamental	4.54	
348	85345	OS	Open Space	Vacant	Disturbed	0.17	
349	85346	OS	Open Space	Thorton Park- School	Ornamental	12.18	
350	85348	OS	Open Space	Concrete Channel	Developed	2.25	
351	85349	OS	Open Space	Railroad	Developed	4.61	South Bristol Street Focus Area (0.11 ac)
352	85350	OS	Open Space	Linear Park	Ornamental	0.01	South Bristol Street Focus Area
353	85354	OS	Open Space	Concrete Channel	Developed	0.54	
354	85358	OS	Open Space	Railroad	Developed	2.98	55 Freeway/Dyer Road Focus Area (0.56 ac)
355	85376	OS	Open Space	Cemetery	Developed	1.11	
356	85413	OS	Open Space	Concrete Channel	Developed	0.86	
357	85415	OS	Open Space	Concrete Channel	Developed	3.33	
358	85417	OS	Open Space	Santiago Creek Park	Oak Woodland	1.77	
359	85421	OS	Open Space	Developed	Developed	0.07	
360	85426	OS	Open Space	Santiago Creek Park	Oak Woodland	0.54	
361	85428	OS	Open Space	Railroad	Developed	1.37	
362	85429	OS	Open Space	Railroad	Developed	0.79	
363	85430	OS	Open Space	Railroad	Developed	0.42	
364	85437	OS	Open Space	River View Golf Course	Ornamental	10.09	
365	85442	OS	Open Space	Developed	Developed	0.16	
366	85444	OS	Open Space	Developed	Developed	0.16	
367	85448	OS	Open Space	Vacant	Disturbed	0.80	
368	85450	OS	Open Space	Vacant	Disturbed	0.26	
369	85452	OS	Open Space	Vacant	Disturbed	0.03	
370	85454	OS	Open Space	Santiago Creek Park	Oak Woodland	0.20	
371	85485	OS	Open Space	Concrete Channel	Developed	0.86	
372	85486	OS	Open Space	Concrete Channel	Developed	0.57	
373	85487	OS	Open Space	Concrete Channel	Developed	0.47	
374	85488	OS	Open Space	Concrete Channel	Developed	0.18	
375	85489	OS	Open Space	Railroad	Developed	0.35	
376	85490	OS	Open Space	Railroad	Developed	0.68	
377	85491	OS	Open Space	Railroad	Developed	0.57	
378	85492	OS	Open Space	Railroad	Developed	0.73	
379	85493	OS	Open Space	Pacific Electric Bike Trail	Ornamental	0.18	
380	85494	OS	Open Space	Pacific Electric Bike Trail	Ornamental	0.14	
381	85495	OS	Open Space	Pacific Electric Bike Trail	Ornamental	0.14	
382	85496	OS	Open Space	Pacific Electric Bike Trail	Ornamental	0.15	
383	85497	OS	Open Space	Pacific Electric Bike Trail	Ornamental	0.15	
384	85498	OS	Open Space	Pacific Electric Bike Trail	Ornamental	0.16	
385	85499	OS	Open Space	Pacific Electric Bike Trail	Ornamental	0.21	
386	85500	OS	Open Space	Pacific Electric Bike Trail	Ornamental	0.20	
387	85501	OS	Open Space	Pacific Electric Bike Trail	Ornamental	0.22	

	City Identification Number	Existing General Plan Land Use Designation	General Plan Land Use	Land Use	Habitat Classification	Acreage	Focus Area Location
388	85502	OS	Open Space	Pacific Electric Bike Trail	Ornamental	0.20	
389	85503	OS	Open Space	Riprap Channel	Developed	2.38	
390	85504	OS	Open Space	Riprap Channel	Developed	2.57	
391	85505	OS	Open Space	Channel R/W	Disturbed	0.04	
392	85506	OS	Open Space	Concrete Channel	Developed	0.04	
393	85507	OS	Open Space	Concrete Channel	Developed	0.09	
394	85509	OS	Open Space	Riprap Channel	Developed	0.63	
395	85510	OS	Open Space	Linear Park	Ornamental	0.83	
396	85511	OS	Open Space	Riprap Lined Channel	Developed	1.39	
397	85513	OS	Open Space	Concrete Channel	Developed	3.53	
398	85514	OS	Open Space	Concrete Channel	Developed	0.40	
399	85515	OS	Open Space	Concrete Channel	Developed	0.90	
400	85516	OS	Open Space	Concrete Channel	Developed	0.89	
401	85517	OS	Open Space	Concrete Channel	Developed	0.64	
402	85518	OS	Open Space	Concrete Channel	Developed	0.96	
403	85519	OS	Open Space	Concrete channel/ Freeway	Developed	1.04	55 Freeway/Dyer Road Focus Area
404	85522	OS	Open Space	Concrete Lined SAR	Developed	26.82	
405	85523	OS	Open Space	Concrete Lined SAR	Developed	27.50	
406	85726	OS	Open Space	Santiago Creek Trail	Ornamental	8.69	
407	85727	OS	Open Space	Vacant	Disturbed	0.05	
408	85729	OS	Open Space	Santiago Creek	Riparian	0.14	
409	85730	OS	Open Space	Santiago Creek	Riparian	0.11	
410	85731	OS	Open Space	Santiago Creek	Riparian	1.90	
411	85745	OS	Open Space	Santiago Creek Trail	Oak Woodland	1.23	
412	85746	OS	Open Space	Santiago Creek	Riparian	3.78	
413	85763	OS	Open Space	Santa Ana Zoo and Parking	Developed	3.45	
414	85764	OS	Open Space	Santa Ana Zoo and Parking	Developed	9.14	
415	85765	OS	Open Space	Santa Ana Zoo and Parking	Developed	6.20	
416	85784	OS	Open Space	Santa Ana Zoo and Parking	Developed	1.04	
417	85785	OS	Open Space	Santa Ana Zoo and Parking	Developed	0.19	
418	85991	OS	Open Space	Santa Ana Zoo and Parking	Developed	0.13	
419	85993	OS	Open Space	Santa Ana Zoo and Parking	Developed	1.28	
420	86000	OS	Open Space	Vacant Lot	Disturbed	0.54	
421	86037	OS	Open Space	Linear Park	Ornamental	0.03	
422	86046	OS	Open Space	Linear Park	Ornamental	0.09	
423	86051	OS	Open Space	Linear Park	Ornamental	0.07	
424	86052	OS	Open Space	Linear Park	Ornamental	0.07	
425	86053	OS	Open Space	Linear Park	Ornamental	0.08	
426	86059	OS	Open Space	Parking Lot	Developed	0.15	
427	86060	OS	Open Space	Parking Lot	Developed	0.10	
428	86061	OS	Open Space	Parking Lot	Developed	0.18	
429	86062	OS	Open Space	Parking Lot	Developed	0.09	
430	86063	OS	Open Space	Parking Lot	Developed	0.09	

	City Identification Number	Existing General Plan Land Use Designation	General Plan Land Use	Land Use	Habitat Classification	Acreage	Focus Area Location
431	86064	OS	Open Space	Parking Lot	Developed	0.09	
432	86065	OS	Open Space	Parking Lot	Developed	0.09	
433	86066	OS	Open Space	Parking Lot	Developed	0.09	
434	86067	OS	Open Space	Parking Lot	Developed	0.09	
435	86068	OS	Open Space	Parking Lot	Developed	0.09	
436	86069	OS	Open Space	Parking Lot	Developed	0.09	
437	86070	OS	Open Space	Parking Lot	Developed	0.09	
438	86071	OS	Open Space	Parking Lot	Developed	0.09	
439	86072	OS	Open Space	Parking Lot	Developed	0.09	
440	86073	OS	Open Space	Parking Lot	Developed	0.09	
441	86074	OS	Open Space	Parking Lot	Developed	0.09	
442	86075	OS	Open Space	Parking Lot	Developed	0.09	
443	86076	OS	Open Space	Parking Lot	Developed	0.09	
444	86077	OS	Open Space	Parking Lot	Developed	0.10	
445	86078	OS	Open Space	Linear Park	Ornamental	0.09	
446	86079	OS	Open Space	Linear Park	Ornamental	0.08	
447	86080	OS	Open Space	Linear Park	Ornamental	0.08	
448	86081	OS	Open Space	Linear Park	Ornamental	0.09	
449	86082	OS	Open Space	Linear Park	Ornamental	0.09	
450	86083	OS	Open Space	Linear Park	Ornamental	0.09	
451	86084	OS	Open Space	Linear Park	Ornamental	0.09	
452	86085	OS	Open Space	Linear Park	Ornamental	0.09	
453	86086	OS	Open Space	Linear Park	Ornamental	0.09	
454	86087	OS	Open Space	Linear Park	Ornamental	0.09	
455	86088	OS	Open Space	Linear Park	Ornamental	0.09	
456	86089	OS	Open Space	Linear Park	Ornamental	0.09	
457	86092	OS	Open Space	Linear Park	Ornamental	0.09	
458	86093	OS	Open Space	Linear Park	Ornamental	0.09	
459	86094	OS	Open Space	Linear Park	Ornamental	0.10	
460	86095	OS	Open Space	Linear Park	Ornamental	0.10	
461	86096	OS	Open Space	Linear Park	Ornamental	0.10	
462	86097	OS	Open Space	Linear Park	Ornamental	0.10	
463	86098	OS	Open Space	Linear Park	Ornamental	0.10	
464	86099	OS	Open Space	Linear Park	Ornamental	0.10	
465	86132	OS	Open Space	Linear Park	Ornamental	0.11	
466	86133	OS	Open Space	Linear Park	Ornamental	0.02	
467	86134	OS	Open Space	Linear Park	Ornamental	0.02	
468	86135	OS	Open Space	Linear Park	Ornamental	0.02	
469	86136	OS	Open Space	Linear Park	Ornamental	0.01	
470	86137	OS	Open Space	Linear Park	Ornamental	0.02	
471	86146	OS	Open Space	Linear Park	Ornamental	0.05	
472	86147	OS	Open Space	Linear Park	Ornamental	0.14	
473	86148	OS	Open Space	Linear Park	Ornamental	0.03	

	City Identification Number	Existing General Plan Land Use Designation	General Plan Land Use	Land Use	Habitat Classification	Acreage	Focus Area Location
474	86149	OS	Open Space	Linear Park	Ornamental	0.03	
475	86150	OS	Open Space	Linear Park	Ornamental	0.03	
476	86151	OS	Open Space	Linear Park	Ornamental	0.03	
477	86152	OS	Open Space	Linear Park	Ornamental	0.07	
478	86153	OS	Open Space	Linear Park	Ornamental	0.07	
479	86154	OS	Open Space	Linear Park	Ornamental	0.02	
480	86155	OS	Open Space	Linear Park	Ornamental	0.06	
481	86156	OS	Open Space	Linear Park	Ornamental	0.05	
482	86157	OS	Open Space	Linear Park	Ornamental	0.06	
483	86158	OS	Open Space	Linear Park	Ornamental	0.07	
484	86159	OS	Open Space	Linear Park	Ornamental	0.02	
485	86160	OS	Open Space	Linear Park	Ornamental	0.07	
486	86161	OS	Open Space	Linear Park	Ornamental	0.07	
487	86162	OS	Open Space	Linear Park	Ornamental	0.03	
488	86163	OS	Open Space	Linear Park	Ornamental	0.06	
489	86164	OS	Open Space	Linear Park	Ornamental	0.02	
490	86165	OS	Open Space	Linear Park	Ornamental	0.04	
491	86166	OS	Open Space	Linear Park	Ornamental	0.02	
492	86167	OS	Open Space	Linear Park	Ornamental	0.04	
493	86168	OS	Open Space	Linear Park	Ornamental	0.01	
494	86169	OS	Open Space	Linear Park	Ornamental	0.02	
495	86170	OS	Open Space	Linear Park	Ornamental	0.01	
496	86171	OS	Open Space	Linear Park	Ornamental	0.02	
497	86172	OS	Open Space	Linear Park	Ornamental	0.05	
498	86173	OS	Open Space	Vacant	Disturbed	0.03	
499	86174	OS	Open Space	Developed	Developed	0.15	
500	43181	LR-7	Low Density Residential	Ornamental	Santiago Creek Trail	0.26	
501	43182	LR-7	Low Density Residential	Ornamental	Santiago Creek Trail	0.27	
502	43183	LR-7	Low Density Residential	Ornamental	Santiago Creek Trail	0.55	
503	43184	LR-7	Low Density Residential	Ornamental	Santiago Creek Trail	0.46	
504	43185	LR-7	Low Density Residential	Ornamental	Santiago Creek Trail	0.30	
505	43186	LR-7	Low Density Residential	Ornamental	Santiago Creek Trail	0.52	
506	43189	LR-7	Low Density Residential	Ornamental	Santiago Creek Trail	0.70	
507	44344	LR-7	Low Density Residential	Ornamental	Santiago Creek Trail	1.09	
508	44512	LR-7	Low Density Residential	Ornamental	Santiago Creek Trail	0.96	
509	44513	LR-7	Low Density Residential	Ornamental	Santiago Creek Trail	0.03	
510	45364	INS	Institution	Ornamental	Rosita Park	3.52	
511	47805	UN	Urban Neighborhood	Disturbed	Vacant	0.07	
512	47806	UN	Urban Neighborhood	Disturbed	Vacant	0.10	
513	47807	UN	Urban Neighborhood	Disturbed	Vacant	0.06	
514	47839	UN	Urban Neighborhood	Disturbed	Vacant	0.81	
515	47840	UN	Urban Neighborhood	Disturbed	Vacant	0.29	
516	51782	DC	District Center	Ruderal	Vacant - Ruderal	1.32	

	City Identification Number	Existing General Plan Land Use Designation	General Plan Land Use	Land Use	Habitat Classification	Acreage	Focus Area Location
517	56699	LR-7	Low Density Residential	Disturbed	Vacant	0.16	
518	59491	GC	General Commercial	Disturbed	Vacant	0.14	
519	59492	GC	General Commercial	Disturbed	Vacant	0.14	
520	59493	GC	General Commercial	Disturbed	Vacant	0.27	
521	59494	GC	General Commercial	Disturbed	Vacant	0.13	
522	59495	GC	General Commercial	Disturbed	Vacant	0.13	
523	59496	GC	General Commercial	Disturbed	Vacant	0.24	
524	66528	PAO	Professional and Administrative Office	Disturbed	Vacant	0.05	
525	66529	PAO	Professional and Administrative Office	Disturbed	Vacant	0.12	
526	66530	PAO	Professional and Administrative Office	Disturbed	Vacant	0.12	
527	66531	PAO	Professional and Administrative Office	Disturbed	Vacant	0.12	
528	66532	PAO	Professional and Administrative Office	Disturbed	Vacant	0.12	
529	66533	PAO	Professional and Administrative Office	Disturbed	Vacant	0.12	
530	66534	PAO	Professional and Administrative Office	Disturbed	Vacant	0.12	
531	67585	LR-7	Low Density Residential	Disturbed	Vacant	0.14	
532	67615	GC	General Commercial	Disturbed	Vacant	0.33	
533	67617	GC	General Commercial	Disturbed	Vacant	0.04	
534	67618	GC	General Commercial	Disturbed	Vacant	0.19	
535	67999	LR-7	Low Density Residential	Disturbed	Vacant	0.13	
536	68000	LR-7	Low Density Residential	Disturbed	Vacant	0.08	
537	68001	LR-7	Low Density Residential	Disturbed	Vacant	0.08	
538	74019	UN	Urban Neighborhood	Disturbed	Vacant	0.43	
539	74020	UN	Urban Neighborhood	Disturbed	Vacant	0.57	
540	74059	UN	Urban Neighborhood	Disturbed	Vacant	0.12	
541	74060	UN	Urban Neighborhood	Disturbed	Vacant	1.24	
542	74061	UN	Urban Neighborhood	Disturbed	Vacant	0.99	
543	74064	UN	Urban Neighborhood	Disturbed	Vacant	0.74	
544	74066	UN	Urban Neighborhood	Disturbed	Vacant	0.99	
545	74067	UN	Urban Neighborhood	Disturbed	Vacant	0.56	
546	74068	UN	Urban Neighborhood	Disturbed	Vacant	0.84	
547	74069	UN	Urban Neighborhood	Disturbed	Vacant	0.28	
548	74070	UN	Urban Neighborhood	Disturbed	Vacant	0.52	
549	74130	UN	Urban Neighborhood	Disturbed	Vacant	0.14	
550	74477	DC	District Center	Disturbed	Vacant	0.86	
551	74478, 85554	DC	District Center	Disturbed	Vacant	1.46	
552	74684	GC	General Commercial	Disturbed	Vacant	0.20	Grand Avenue/17th Street Focus Area
553	74685	GC	General Commercial	Disturbed	Vacant	0.14	Grand Avenue/17th Street Focus Area
554	74686	PAO	Professional and Administrative Office	Disturbed	Vacant	0.14	Grand Avenue/17th Street Focus Area
555	74692	LR-7	Low Density Residential	Disturbed	Vacant	0.26	Grand Avenue/17th Street Focus Area
556	74693	LR-7	Low Density Residential	Disturbed	Vacant	0.29	Grand Avenue/17th Street Focus Area
557	74694	LR-7	Low Density Residential	Disturbed	Vacant	0.14	Grand Avenue/17th Street Focus Area
558	74695	LR-7	Low Density Residential	Disturbed	Vacant	0.14	Grand Avenue/17th Street Focus Area
559	74696	LR-7	Low Density Residential	Disturbed	Vacant	0.21	Grand Avenue/17th Street Focus Area

	City Identification Number	Existing General Plan Land Use Designation	General Plan Land Use	Land Use	Habitat Classification	Acreage	Focus Area Location
560	74697	LR-7	Low Density Residential	Disturbed	Vacant	0.16	Grand Avenue/17th Street Focus Area
561	75516	GC	General Commercial	Disturbed	Vacant	0.17	
562	75530	GC	General Commercial	Disturbed	Vacant	0.15	
563	75531	GC	General Commercial	Disturbed	Vacant	0.25	
564	75534	GC	General Commercial	Disturbed	Vacant	0.38	
565	75566	GC	General Commercial	Disturbed	Vacant	0.15	
566	75567	GC	General Commercial	Disturbed	Vacant	0.14	
567	75568	GC	General Commercial	Disturbed	Vacant	0.15	
568	75569	GC	General Commercial	Disturbed	Vacant	0.14	
569	75570	GC	General Commercial	Disturbed	Vacant	0.15	
570	75571	GC	General Commercial	Disturbed	Vacant	0.14	
571	75572	GC	General Commercial	Disturbed	Vacant	0.15	
572	75573	GC	General Commercial	Disturbed	Vacant	0.15	
573	75574	GC	General Commercial	Disturbed	Vacant	0.28	
574	75597	GC	General Commercial	Disturbed	Vacant	0.12	
575	75598	GC	General Commercial	Disturbed	Vacant	0.22	
576	75599	GC	General Commercial	Disturbed	Vacant	0.16	
577	75600	GC	General Commercial	Disturbed	Vacant	0.79	
578	75658	GC	General Commercial	Disturbed	Vacant	0.16	
579	75659	GC	General Commercial	Disturbed	Vacant	0.17	
580	75660	GC	General Commercial	Disturbed	Vacant	0.15	
581	75661	GC	General Commercial	Disturbed	Vacant	0.23	
582	75662	GC	General Commercial	Disturbed	Vacant	0.15	
583	75663	GC	General Commercial	Disturbed	Vacant	0.13	
584	75664	GC	General Commercial	Disturbed	Vacant	0.17	
585	75665	GC	General Commercial	Disturbed	Vacant	0.17	
586	75666	GC	General Commercial	Disturbed	Vacant	0.17	
587	75667	GC	General Commercial	Disturbed	Vacant	0.17	
588	75668	GC	General Commercial	Disturbed	Vacant	0.17	
589	75671	GC	General Commercial	Disturbed	Vacant	0.20	
590	75672	GC	General Commercial	Disturbed	Vacant	0.17	
591	75861	GC	General Commercial	Disturbed	Vacant	0.33	
592	78706	PAO	Professional and Administrative Office	Ruderal	Vacant Ruderal	1.75	55 Freeway/Dyer Road Focus Area
593	78707	PAO	Professional and Administrative Office	Ruderal	Vacant Ruderal	0.81	55 Freeway/Dyer Road Focus Area
594	78708	PAO	Professional and Administrative Office	Ruderal	Vacant Ruderal	0.27	55 Freeway/Dyer Road Focus Area
595	78842	DC	District Center	Disturbed	Vacant	3.11	
596	82277	DC	District Center	Ruderal	Vacant - Ruderal	2.43	
597	84942	IND	Industrial	Developed	Concrete Channel	2.59	
598	84959	IND	Industrial	Developed	Concrete Channel	2.00	
599	84960	IND	Industrial	Developed	Concrete Channel	3.17	
600	84961	IND	Industrial	Developed	Concrete Channel	3.84	
601	84990	IND	Industrial	Developed	Concrete Channel	2.59	
602	85006	DC	District Center	Disturbed	Vacant	2.79	

	City Identification Number	Existing General Plan Land Use Designation	General Plan Land Use	Land Use	Habitat Classification	Acreage	Focus Area Location
603	85146	IND	Industrial	Ornamental	Vacant - Turf	2.78	
604	85331	INS	Institution	Ornamental	El Salvador Park	3.82	
605	85425	LR-7	Low Density Residential	Ornamental	Santiago Creek Trail	1.13	
606	85607	LR-7	Low Density Residential	Ornamental	Neighborhood Park	0.25	
607	85608	LR-7	Low Density Residential	Ornamental	Neighborhood Park	0.17	
608	85610	LR-7	Low Density Residential	Ornamental	Neighborhood Park	0.18	
609	85612	LR-7	Low Density Residential	Ornamental	Neighborhood Park	0.29	
610	85614	LR-7	Low Density Residential	Ornamental	Neighborhood Park	0.19	
611	85616	LR-7	Low Density Residential	Ornamental	Neighborhood Park	0.32	
612	85751	DC	District Center	Ruderal	Vacant - Ruderal	6.25	
613	85752	DC	District Center	Ruderal	Vacant - Ruderal	1.05	
614	86034	LR-7	Low Density Residential	Disturbed	Vacant	0.05	
615	86116	GC	General Commercial	Disturbed	Vacant	0.10	
616	86117	GC	General Commercial	Disturbed	Vacant	0.46	
617	86118	GC	General Commercial	Disturbed	Vacant	0.44	
618	86138	GC	General Commercial	Disturbed	Vacant	0.06	
619	86139	GC	General Commercial	Disturbed	Vacant	0.06	
620	86140	LR-7	Low Density Residential	Disturbed	Vacant	0.08	
621	86141	LR-7	Low Density Residential	Disturbed	Vacant	0.06	
622	86142	LR-7	Low Density Residential	Disturbed	Vacant	0.07	
623	86143	LR-7	Low Density Residential	Disturbed	Vacant	0.07	
624	86144	LR-7	Low Density Residential	Disturbed	Vacant	0.07	
625	86145	LR-7	Low Density Residential	Disturbed	Vacant	0.12	
626	-	GC	General Commercial	Vacant	Ruderal	0.54	
627	-	GC	General Commercial	Vacant	Ruderal	0.45	
628	-	GC	General Commercial	Vacant	Ruderal	0.19	
629	-	GC	General Commercial	Vacant	Ruderal	0.23	
630	-	GC	General Commercial	Vacant	Ruderal	0.15	
631	-	GC	General Commercial	Vacant	Ruderal	0.85	
632	-	GC	General Commercial	Vacant	Ruderal	0.19	
633	-	GC	General Commercial	Vacant	Ruderal	0.19	
634	-	GC	General Commercial	Vacant	Ruderal	0.52	
635	-	-	Santa Ana River	Concrete Channel	Developed	3.53	Santa Ana River - SOI
636	-	-	Santa Ana River	Concrete Channel	Developed	33.00	Santa Ana River - SOI
637	-	-	Santa Ana River	Concrete Channel	Developed	5.34	Santa Ana River - SOI
638	-	-	Santa Ana River	Concrete Channel	Developed	41.50	Santa Ana River - SOI