



# DRAFT ENVIRONMENTAL JUSTICE POLICY FRAMEWORK FOR THE GENERAL PLAN UPDATE

City of Santa Ana | Revised December 2021



*(This page intentionally left blank)*



# Table of Contents

Page	Section
3	Introduction
6	Environmental Justice Policy Framework
7	Reducing Exposure to Pollution
21	Improving Public Facilities
29	Promoting Healthy Food
31	Promoting Safe and Sanitary Housing
35	Increasing Physical Activity
41	Enhancing Civic Engagement





# Introduction

As part of the General Plan update, the City is expanding its focus on the topic of environmental justice. The City knows that many of its neighborhoods have long experienced and taken action to address hazardous environmental conditions.

Additionally, a new state law mandates that, after January 1, 2018, cities and counties adopt an Environmental Justice element in their general plans or integrate environmental justice policies, objectives, and goals into other elements when two or more general plan elements are being updated.

The City is considering changes to its goals, policies, and actions that will improve existing and future conditions for all of Santa Ana, with a focus on those in greatest need of help and protection.



## **Introduction** (continued)

The City has opted to update its General Plan with an “environmental justice in all policies” format. As such, the goals and policies related to environmental justice (EJ) are not found in a single element, but are placed in nearly every element of the General Plan to ensure the topic is present alongside the multitude of issues and topics that affect its communities.

In December 2018, the City released its Draft EJ Policy Framework, including a number of policies that addressed equity and environmental justice. Based on additional background analysis and local input, the City has revised and augmented the Draft Policy Framework to bolster its approach to environmental justice.

This document is a summary of EJ policies that were presented in the 2018 Draft EJ Policy Framework (some with revisions), and new policies developed in the first half of 2020 and revised in 2021. The City has also listed many of the potential actions that help demonstrate the City’s plan to take the next steps in implementing the General Plan and bringing about positive change and improvements to the community.



# Environmental Justice Policy Framework

Consistent with the General Plan Shared Vision and Core Values, the potential changes will emphasize policies and actions to:

- Reduce the unique or compounded health risks in disadvantaged communities by reducing pollution exposure and promoting public improvements, public services, community amenities, food access, safe and sanitary homes, and physical activity;
- Promote civic engagement in the public decision-making process; and
- Prioritize improvements and programs that address the needs of disadvantaged communities.

Based on the above, the following pages list all environmental justice related policies and implementation actions from the City's August 6, 2021 Draft Policy Framework in six categories:

- Reducing Exposure to Pollution
- Improving Public Facilities
- Promoting Healthy Food
- Creating Safe and Sanitary Housing
- Increasing Physical Activity
- Enhancing Civic Engagement





# Reducing Exposure to Pollution

Develop strategies and support regulations that will help reduce exposure to air pollution and hazardous materials.

*A clear view of the mountains over Santa Ana  
Photo courtesy of Lisandro Orozco*





# Reducing Exposure to Pollution

## POLICIES

### CONSERVATION ELEMENT (CN)

- **Policy CN-1.2 – Climate Action Plan.** Consistency with emission reduction goals highlighted in the Climate Action Plan shall be considered in all major decisions on land use and investments in public infrastructure.
- **Policy CN-1.3 – Education.** Promote efforts to educate businesses and the general public about air quality standards, reducing the urban heat island effect, health effects from poor air quality and extreme heat, and best practices they can make to improve air quality and reduce greenhouse gas emissions.
- **Policy CN-1.5 – Sensitive Receptor Decisions.** Consider potential impacts of stationary and non-stationary emission sources on existing and proposed sensitive uses and opportunities to minimize health and safety risks. Develop and adopt new regulations on the siting of facilities that might significantly increase pollution near sensitive receptors within environmental justice area boundaries.
- **Policy CN-1.8 – Promote Alternative Transportation.** Promote use of alternate modes of transportation in the City of Santa Ana, including pedestrian, bicycling, public transportation, car sharing programs and emerging technologies.
- **Policy CN-1.9 – Public Investment Alternative Transportation Infrastructure.** Continue to invest in infrastructure projects that support public transportation and alternate modes of transportation in the City of Santa Ana, including pedestrian, bicycling, public transportation, car sharing programs, and emerging technologies.





# Reducing Exposure to Pollution

## POLICIES

- **Policy CN-1.15 – Community Emissions Reduction.** Collaborate with the South Coast Air Quality Management District and local stakeholders in advance of designation as a priority community for air monitoring and reduction, and implement measures and strategies identified in other air monitoring and emissions reduction plans that are applicable to and feasible for Santa Ana.
- **Policy CN-1.16 – Indirect Source Rules.** Support the development of regional legislation such as the drayage truck rule, advanced clean truck route, and heavy-duty low NOx rule by the South Coast Air Quality Management District.
- **Policy CN-3.5 – Landscaping.** Promote and encourage the planting of native and diverse tree species to improve air quality, reduce heat island effect, reduce energy consumption, and contribute to carbon mitigation with special focus in environmental justice areas.

## ECONOMIC PROSPERITY ELEMENT (EP)

- **Policy EP-1.9 – Avoid Conflict of Uses.** Avoid potential land use conflicts by prohibiting the location of sensitive receptors and noxious land uses in close proximity.
- **Policy EP-3.3 – Mitigate Impacts.** Promote the development of sustainable and equitable new land use plans that proactively reduces negative impacts on existing residents and businesses.



# Reducing Exposure to Pollution

## POLICIES

### LAND USE ELEMENT (LU)

- **Policy LU-1.1 – Compatible Uses.** Foster compatibility between land uses to enhance livability and promote healthy lifestyles.
- **Policy LU-3.8 – Sensitive Receptors.** Avoid the development of industry and sensitive receptors in close proximity to each other that could pose a hazard to human health and safety due to the quantity, concentration, or physical or chemical characteristics of the hazardous materials utilized, or the hazardous waste an operation may generate or emit.
- **Policy LU-3.9 – Noxious, Hazardous, Dangerous, and Polluting Uses.** Improve the health of residents, students, and workers by limiting the impacts of construction activities and operation of noxious, hazardous, dangerous, and polluting uses that are in close proximity to sensitive receptors, with priority given to discontinuing such uses within environmental justice area boundaries.
- **Policy LU-3.11 – Air Pollution Buffers.** Promote landscaping and other buffers to separate existing sensitive uses from rail lines, heavy industrial facilities, and other emissions sources. As feasible, apply more substantial buffers within environmental justice area boundaries.
- **Policy LU-3.12 – Indoor Air Quality.** Require new sensitive land uses proposed in areas with high levels of localized air pollution to achieve good indoor air quality through landscaping, ventilation systems, or other measures.



# Reducing Exposure to Pollution

## POLICIES

### MOBILITY ELEMENT (M)

- **Policy M-1.7 – Proactive Mitigation.** Proactively mitigate potential air quality, noise, congestion, safety, and other impacts from the transportation network on residents and business.
- **Policy M-4.9 – Air Pollution Mitigation.** Consider land use, building, site planning, and technology solutions to mitigate exposure to transportation-related air pollution.

### OPEN SPACE ELEMENT (OS)

- **Policy OS-2.7 – Healthy Indoor Options.** Encourage or incentivize new commercial and residential development to provide private indoor recreation space when located in areas with high levels of localized air pollution or if site is adjacent to freeways or heavy industrial uses.
- **Policy OS-2.8 – Hazardous Materials.** Reduce or eliminate, where feasible, the use of pesticides and herbicides that negatively impact human health at park facilities and publicly accessible open spaces.





# Reducing Exposure to Pollution

## POLICIES

### SAFETY ELEMENT (M)

- **Policy S-2.1 – Regional Collaboration.** Consult and collaborate with federal, state, and regional agencies to identify and regulate the disposal and storage of hazardous materials, prevent the illegal transportation and disposal of hazardous waste, and facilitate the cleanup of contaminated sites.
- **Policy S-2.2 – Hazardous Waste Generators.** Collaborate with appropriate agencies to identify and inventory all users and handlers of hazardous materials to proactively mitigate potential impacts.
- **Policy S-2.3 – Transportation and Storage.** Coordinate with the County of Orange, the California Department of Transportation, and other relevant parties to enforce state and local laws regulating the storage and transport of hazardous materials within the City of Santa Ana, and limit truck routes through the city to arterials streets away from natural habitats and sensitive land uses.
- **Policy S-2.4 – Planning and Remediation.** Determine the presence of hazardous materials and/or waste contamination prior to approval of new uses and require that appropriate measures be taken to protect the health and safety of site users and the community.
- **Policy S-2.5 – Education and Best Practices.** Promote public awareness of best practices for and participation in household hazardous waste management and disposal.
- **Policy S-2.6 – Existing Sensitive Uses.** Partner and collaborate with property owners, businesses, and community groups to develop strategies to protect and minimize risks from existing hazardous material sites to existing nearby sensitive uses, with priority given to discontinuing such uses within environmental justice area boundaries.



# Reducing Exposure to Pollution

## IMPLEMENTATION ACTIONS

### COMMUNITY ELEMENT (CM)

- **Action CM-3.3 – Health Metrics.** Engage with the Orange County Health Care Agency and other stakeholders to monitor key health indicators to measure the success of the outcome of General Plan policies and the implementation plan, including reduction in incidence in asthma and low birth weight of infants.
- **Action CM-3.4 – Prevention Activities.** Coordinate with the County Health Care Agency to identify the root causes of health disparities and inequities in Santa Ana, with additional detail for residents living within environmental justice area boundaries. Identify potential programmatic changes and resources to better address the root causes.
- **Action CM-3.8 – Environmental Soil Screening Measures.** Collaborate with Orange County Health Care Agency, and local stakeholders such as Orange County Environmental Justice and UC Irvine Public Health, in efforts to adjust the County and State policies for health and environmental screening levels to promote healthy outcomes related to lead contamination as recommended by health experts.

### CONSERVATION ELEMENT (CN)

- **Action CN-1.1 – Air Quality Planning.** Review existing and monitor the development of new air monitoring and emissions reduction plans prepared by the South Coast Air Quality Management District. Gather and evaluate measures and strategies in such plans for their applicability to and feasibility for Santa Ana.



# Reducing Exposure to Pollution

## IMPLEMENTATION ACTIONS

- **Action CN-1.2 – Community Identification.** Coordinate with the South Coast Air Quality Management District and local stakeholders to pursue a priority community designation for eligible environmental justice areas of the city , with focus on areas with unique needs and highest pollution burden as identified in the CalEnviroScreen tool. If such designation is not awarded, seek grant funds for activities such as local air quality monitoring.
- **Action CN-1.4 – Health Risk Criteria.** Establish criteria for requiring health risk assessments for existing and new industries, including the type of business, thresholds, and scope of assessment. Review existing and establish new regulation to reduce and avoid increased pollution near sensitive receptors within environmental justice area boundaries.
- **Action CN-1.5 – Agency Permits.** Monitor the South Coast Air Quality Management District permitting and inspection process and the Orange County Health Care Agency to identify businesses in Santa Ana with potential hazardous materials or by-products, with a special focus on environmental justice communities. Serve as a liaison for residents to identify potential emission violations. Share information and data with the community on the City’s Environmental Quality web page.
- **Action CN-1.6 – Emissions Monitoring.** Coordinate with the South Coast Air Quality Management District to monitor existing air measurements and recommend new air measurements and locations.
- **Action CN-1.7 – Truck Idling.** Evaluate strategies to reduce truck idling found or reported in areas with sensitive receptors, with a priority placed on environmental justice areas.





# Reducing Exposure to Pollution

## IMPLEMENTATION ACTIONS

- **Action CN-1.8 – Improve Older Trucks.** Promote the City’s Vehicle Replacement Plan and explore the replacement of older trucks through City participation in regional incentive programs and education of Santa Ana private fleet owners of program opportunities.
- **Action CN-1.9 – Indirect Source Rules.** Support the development of indirect source rules, drayage truck rules, advanced clean truck routes, and heavy-duty low NOx rules by the South Coast Air Quality Management District.
- **Action CN-1.10 – Interagency Team.** Establish an environmental quality interagency team to evaluate, monitor, and make recommendations to address air quality and environmental hazard issues, with a special focus on environmental justice areas. Publish results and information on the City’s website through a dedicated Santa Ana Environmental Quality web page.
- **Action CN-1.12 – Data Collection for Emissions Plans.** Coordinate with the South Coast Air Quality Management District to explore ways to initiate data collection efforts for a community emissions reduction and/or community air monitoring plan, including the identification of information needed (new or updated), potential data sources and needed resources, and strategies to engage residents and collect information.
- **Action CN-1.13 – Community Survey on Healthy Lifestyles.** Plan for and conduct a community survey of residents related to community health, air quality, parks, and community services; with focused outreach for environment justice concerns and priority areas (tie into other City efforts like Strategic Plan, park and recreation planning, community benefits, etc.).



# Reducing Exposure to Pollution

## IMPLEMENTATION ACTIONS

- **Action CN-1.14 – Expanded Interactions.** Identify opportunities to expand regular attendance of City staff and decision-makers at meetings for neighborhoods within environmental justice area boundaries, so that residents and businesses can more easily communicate their unique issues and needs. Include a translator(s) at these meetings so that all residents can engage.
- **Action CN-1.15 – Expanded Representation.** Expand representation of residents from neighborhoods within environmental justice area boundaries by extending residents from such areas to become board, commission, and task force members as openings occur.
- **Action CN – 1.16 – City Budget.** Evaluate the City’s budget and financial policies to include direction for prioritizing public services and improvements within environmental justice area boundaries. Augment budget meeting presentations to include a section dedicated to the status of actions and improvements to address the needs of residents within environmental justice area boundaries.

## ECONOMIC PROSPERITY ELEMENT (EP)

- **Action EP-3.5 – Green Business Incentives.** Green business incentives. Continue to promote and market the Recycling Market Development Zone. Develop an incentive program to encourage nonpolluting industry and clean green technology companies that reduce environmental impacts and the carbon footprint to locate to the city. Encourage existing businesses to invest in technology and best practice to transition to sustainable business practices.



# Reducing Exposure to Pollution

## IMPLEMENTATION ACTIONS

### LAND USE ELEMENT (LU)

- **Action LU-3.2 – Design Guidelines and Standards.** Update the zoning code's development and operational standards for industrial zones to address incompatibility with adjacent uses, including minimum distance requirements to buffer heavy industrial uses from sensitive receptors. Conduct a study to evaluate and establish appropriate minimum distances and landscape buffers between polluting industrial uses from sensitive receptors such as residences, schools, day care, and public facilities.
- **Action LU-3.3 – Healthy Lifestyles.** Collaborate with residents and industry stakeholders to create a program to incentivize and amortize the removal of existing heavy industrial uses adjacent to sensitive uses.
- **Action LU-3.4 – Funding for Air Filtration.** Seek funding from South Coast Air Quality Management District and other regional sources for the installation of high-efficiency air filtration systems in buildings, homes, and schools located in areas with high levels of localized air pollution, especially for those within environmental justice area boundaries.
- **Action LU-3.5 – Business Incentives.** Explore economic development incentives and grant funding to encourage existing or draw new business investments in the industrial zones to incorporate more environmentally sustainable practices.
- **Action LU-3.6 – Lead Paint Abatement.** Coordinate with County of Orange Health Care Agency and community organizations to strengthen local programs and initiatives to eliminate lead-based paint hazards, with priority given to residential buildings located within environmental justice area boundaries.





# Reducing Exposure to Pollution

## IMPLEMENTATION ACTIONS

### LAND USE ELEMENT (LU)

- **Action LU-3.16 – Health In Corridors.** Require a Health Risk Assessment to identify best practices to minimize air quality and noise impacts when considering new residential uses within 500 feet of a freeway.
- **Action LU-3.17 – Training for Sale Practice.** Pursue the EPA Renovate Right Program to train local residential contractors for certification as lead renovators to promote safe work practices and prevent lead contamination.
- **Action LU-3.18 – Renovations and Lead Prevention.** Evaluate the feasibility of requiring contractor training and/or certification for safe work practices to conduct residential renovations for pre-1978 structures that may contain existing lead paint.
- **Action LU-3.23 – Agency Permits.** Work with South Coast Air Quality Management District and Orange County Health Care Agency to evaluate existing special permit process and criteria for approval, and identify potential policy changes to minimize issuance of special permits with potential health impacts.
- **Action LU-3.24 – Public Health.** Partner with Orange County Health Care Agency and community serving organizations to evaluate best practices and benefits of preparing a Public Health Plan to address environmental hazards in Santa Ana, with special focus in environmental justice communities. Conduct public meetings to gather information and present preliminary findings.



# Reducing Exposure to Pollution

## IMPLEMENTATION ACTIONS

### LAND USE ELEMENT (LU)

- **Action LU-3.26 – Health Conditions.** Work with Orange County Health Care Agency and local stakeholders including Orange County Environmental Justice and UC Irvine Public Health to identify baseline conditions for lead contamination in Santa Ana, monitor indicators of lead contamination, and measure positive outcomes. Collaborate with these organizations to secure grant funds for soil testing and remediation for residential properties in proximity to sites identified with high soil lead levels, with a focus on Environmental Justice census tracts.
- **Action LU-3.27 – Groundwater Practice.** Coordinate with the State Department of Toxic Substances Control (DTSC) to monitor the Santa Ana Southeast Groundwater Clean Up Project and identify measurable progress to remediate groundwater contamination. Share information with the community on the City’s Environmental Quality web page.
- **Action LU-3.29 – Development Site History.** Update the City’s Development Review application process to require developers to provide information regarding the prior use of the site and history of hazardous materials on the property, in order to identify potential for site contamination from hazardous materials or soil lead contamination to be remediated.
- **Action LU-4.6 – Fireworks and Environmental Pollution.** Study the data available to understand to health effects and environmental exposure, including air quality and noise impacts, from airborne sources such as fireworks shows and displays, with special focus on environmental justice areas.
- **Action LU-4.7 – Construction Improvements.** Identify best practices and communication tools to monitor mitigation measures and oversight of private and public construction improvements to protect the health and safety of health of the community, with focus on environmental justice areas.



# Reducing Exposure to Pollution

## IMPLEMENTATION ACTIONS

### MOBILITY ELEMENT (M)

- **Action M-5.8 – Air Quality Improvements.** Participate in inter-jurisdictional efforts to promote improvements in air quality and to meet state and federal mandates through advanced technology and TDM programs.

### SAFETY ELEMENT (M)

- **Action S-2.4 – Lead Contamination.** Work with local and regional partners, such as Orange County Environmental Justice, Orange County Health Care Agency and University of California at Irvine Public Health, to understand the prevalence, sources, and implications of lead contamination of soil across Santa Ana. Collaborate with environmental justice stakeholders in proposing solutions to remove hazardous lead-contaminated soils in the city and with benchmarks to measure and track effectiveness of proposed programs.

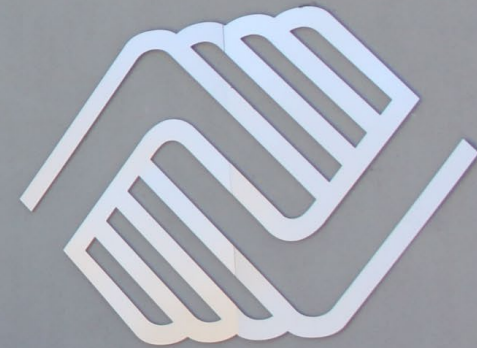


# Improving Public Facilities

Increase access to community health facilities, parks, community centers, and other public services and facilities, particularly in underserved areas.

**JOE MACPHERSON**  
**CENTER FOR OPPORTUNITY**

**GREAT FUTURES START HERE**



**BOYS & GIRLS CLUB**  
**OF SANTA ANA**





# Improving Public Facilities

## POLICIES

### COMMUNITY ELEMENT (CM)

- **Policy CM-1.1 – Access to Programs.** Provide and maintain access to recreational and cultural programs to serve residential areas. Prioritize the provision of programs for residents living within park deficient or environmental justice areas.
- **Policy CM-1.3 – Equitable Programs.** Encourage recreational and cultural programs and activities of local interest that are inclusive and affordable to all.
- **Policy CM-2.1 – Supporting Organizations.** Collaborate with both private and public organizations that support early childhood education programs to optimize and expand service capacity.
- **Policy CM-2.2 – Educational Facilities Capacity.** Partner with local school districts, nonprofit organizations, and other educational providers regarding land use and policy changes to ensure available educational facilities.
- **Policy CM-2.6 – Educational Funding.** Enhance educational opportunities in the community by expanding and maintaining access to libraries, learning centers, and technology through innovative funding sources.
- **Policy CM-3.1 – Supporting Health Services.** Collaborate with and provide support to organizations engaged in improving public health and wellness, expanding access to affordable quality health care, and providing medical services for all segments of the community. Encourage greater emphasis on expanding or improving health services to underserved areas and populations.





# Improving Public Facilities

## POLICIES

### MOBILITY ELEMENT (M)

- **Policy M-1.2 – Balanced Multimodal Networks.** Provide a balanced and equitable multimodal circulation network that reflects current and changing needs.
- **Policy M-3.3 – Safe Routes to Schools and Parks.** Lead the development and implementation of safe routes to schools and parks by partnering with the school districts, residents, property owners, and community stakeholders.
- **Policy M-5.7 – Infrastructure Condition.** Enhance travelway safety by maintaining streets, alleys, bridges, sidewalks, lighting, and other transportation infrastructure in excellent condition.

### OPEN SPACE ELEMENT (OS)

- **Policy OS-1.1 – Parks Master Plan.** Create and regularly update a citywide parks master plan to provide guidance for the acquisition, development, maintenance and programming of parks, recreation facilities, trails and open space to meet community needs.
- **Policy OS-1.2 – Parks and Recreation System.** Provide and support a comprehensive and integrated network of parks, recreation facilities, trails and open space that is diverse, with a variety of active and passive recreational opportunities.
- **Policy OS-2.12 – Park and Facility Character.** Ensure that parks and recreation facilities incorporate placemaking elements that foster social connections and community pride such as art, landscaping, murals, and amenities and facilities that reflect site character and local needs.



# Improving Public Facilities

## POLICIES

- **Policy OS-2.13 – Neighborhood Needs.** Consider unique neighborhood and demographic needs in the development of local parks, open spaces and programs. Balance these unique needs with efforts to ensure affordability and serve residents citywide.
- **Policy OS-3.1 – Park and Facility Maintenance.** Ensure all parks, recreation facilities and open spaces are well maintained.

## PUBLIC SERVICES ELEMENT (PS)

- **Policy PS-1.2 – Equitable Distribution.** Ensure public services and facilities reflect changing population needs and are equitably distributed and accessible, with priority assigned to improving areas that are underserved and/or within environmental justice area boundaries.
- **Policy PS-1.8 – Access for All.** Improve connectivity and ADA special needs accessibility at all public facilities.
- **Policy PS-1.11 – Safety.** Remove actual and perceived safety concerns that create barriers to physical activity by requiring adequate lighting, street visibility, and areas of clear connectivity, especially for new projects or improvements within environmental justice area boundaries.



# Improving Public Facilities

## POLICIES

### URBAN DESIGN ELEMENT (UD)

- **Policy UD-1.6 – Active Transportation Infrastructure.** Support the creation of citywide public street and site amenities that accommodate and promote an active transportation-friendly environment.
- **Policy UD-3.2 – Active Paths.** Strengthen and activate the design of paths and adjacent development through enhanced and cohesive streetscapes, architectural themes, and landscaping.
- **Policy UD-3.3 Foster Community Building.** Promote a safe environment that facilitates social interaction and improves active transportation along corridors.
- **Policy UD-3.6 – Linear Park System.** Support open space improvements along roadways and non-vehicular paths, such as bike or multiuse trails, to create linear open space that connect to a network of parks and activity areas throughout the city.



# Improving Public Facilities

## IMPLEMENTATION ACTIONS

### COMMUNITY ELEMENT (CM)

- **Action CM-1.6 – Collaboration.** Develop intentional, strategic partnerships with public, private, and nonprofit entities to improve health outcomes by leveraging capacity, resources, and programs around mutually beneficial initiatives that promote health, equity, and sustainability in neighborhoods within environmental justice area boundaries. Develop a comprehensive partnership policy providing guidelines that can be used throughout the City organization.
- **Action CM-1.5 – Alternative Facilities.** In park deficient and environmental justice areas, identify facilities that are viable alternatives to public parks and municipal facilities for recreational, cultural, and health and wellness programs, including but not limited to school facilities, facilities of faith-based and civic organizations, and privately owned recreation and entertainment facilities. Identify, inventory, and rank other resources for potential park system acquisition, expansion to existing parks, and/or parks development opportunity within the community.
- **Action CM-1.6 – Program Accessibility.** To ensure residents of environmental justice area boundaries have access to recreational, cultural, and health and wellness programs, establish accessibility corridors that provide attractive, comfortable, and safe pedestrian and bike access to public recreational facilities in the Parks Master Plan (an implementation action of the Open Space Element). Identify public realm improvements needed to create these accessibility corridors. Prioritize investments for accessibility corridors in the city's capital investment program; include investments for accessibility corridors when investments are made in new parks and recreation facilities within environmental justice area boundaries.



# Improving Public Facilities

## IMPLEMENTATION ACTIONS

- **Action CM-2.1 – Facilities to Support Lifelong Learning.** For areas within park deficient and environmental justice areas, conduct, maintain, and publicize an inventory of public, nongovernmental, and private facilities that can be used by organizations to support early childhood education, after school activities, libraries and learning centers, and other meetings and educational opportunities.
- **Action CM-2.2 – Public Realm.** Identify areas in need of a public realm plan to provide attractive, comfortable, and safe walking corridors to promote accessibility to community programs or activity centers, in conjunction with the City's Active Transportation Plan.
- **Action CM-3.1 – Community Health Care Facilities.** Evaluate options to support existing and potential community health care facilities in environmental justice focus areas through a variety of mechanisms such as reduced permit fees, reduced impact fees, and tax incentives.
- **Action CM-3.2 – Pedestrian Access to Health Facilities.** Ensure that new or redeveloped health care facilities include pedestrian friendly site amenities. In areas where mobile clinics are stationed, ensure the location is safe and accessible for pedestrians, cyclists, and transit users.

## MOBILITY ELEMENT (M)

- **Action M-3.5 – Safe Routes to Schools and Parks.** Develop and pursue implementation of a Safe Routes to School Plan and a Safe Routes to Parks Plan.
- **Action M-4.5 – Citywide Design Guidelines Update.** Update the Citywide Design Guidelines to strengthen pedestrian and cyclist linkages to development centers and residential neighborhoods and coordinate on-site landscape with public realm landscaping.





# Improving Public Facilities

## IMPLEMENTATION ACTIONS

### OPEN SPACE ELEMENT (CM)

- **Action OS-1.2 – Interagency Forum.** Convene an interagency forum to take a coordinated approach to evaluating the feasibility for converting City-owned properties to parkland, with special focus in park deficient and environmental justice areas.

### PUBLIC SERVICES ELEMENT (PS)

- **Action PS-1.4 – Fiscal Priority for Public Improvements.** Identify City fiscal and operational procedures and potential thresholds involved in the prioritization of general funds for public programming, service, or infrastructure improvements for residents living within environmental justice area boundaries.





# Promoting Healthy Food



Improve the health and wellness of all residents through policies, regulations, and programs that foster healthier food options.





# Promoting Healthy Food

## POLICIES

### COMMUNITY ELEMENT (CM)

- **Policy CM-3.6 – Healthy Options.** Promote access to affordable, fresh, and healthy food options citywide through efforts such as community gardens, culinary classes, and neighborhood farmers markets.

### OPEN SPACE ELEMENT (CM)

- **Policy OS-2.4 – Urban Agriculture and Healthy Foods.** Expand urban agriculture opportunities in private development and public spaces, including home gardens, community gardens, and urban farms. Support healthy food choices through amenities and programs.

## IMPLEMENTATION ACTIONS

### COMMUNITY ELEMENT (CM)

- **Action CM-3.6 – Fresh and Healthy Foods.** Pursue programs, incentives, and/or grants to encourage urban agriculture and small grocery or convenience stores to sell fresh foods in the city, especially those within environmental justice area boundaries. Examples include grants or loans to purchase updated equipment, publicity, or directories of healthy food outlets, or connecting stores to wholesale sources of healthy, local, or organic food.



# Creating Safe and Sanitary Housing



Add to existing efforts to reduce health hazards associated with construction materials, building standards, and deferred maintenance.





# Creating Safe and Sanitary Housing

## POLICIES

### COMMUNITY ELEMENT (CM)

- **Policy CM-3.2 – Healthy Neighborhood.** Continue to support the creation of healthy neighborhoods by addressing public safety, land use conflicts, hazardous soil contamination, incompatible uses, and maintaining building code standards.

### LAND USE ELEMENT (LU)

- **Policy LU-4.6 – Healthy Living Conditions.** Support diverse and innovative housing types that improve living conditions and promote a healthy environment.

### PUBLIC SERVICES ELEMENT (PS)

- **Policy PS-1.9 – Supportive Housing.** Collaborate with community stakeholders to identify and encourage the development of suitable sites for housing with support services.





# Creating Safe and Sanitary Housing

## IMPLEMENTATION ACTIONS

### COMMUNITY ELEMENT (CM)

- **Action CM-1.7 – Rental Property Outreach.** Augment the Proactive Rental Enforcement Team and Residential Response Team with additional outreach geared toward absentee owners of rental properties. Create and periodically distribute outreach materials in order to educate absentee owners about legal obligations to maintain and upkeep rental properties. Distribute information to tenants about their rights and protection, so they are not penalized for reporting or living in a dwelling unit that does not meet health and safety standards. Translate outreach efforts into Spanish, Vietnamese, and other appropriate languages. Prioritize such outreach for properties within environmental justice area boundaries.
- **Action CM-1.8 – Neighborhood Rehabilitation.** Continue to seek state and federal funding for neighborhood rehabilitation projects and collaborate with community-based organizations to identify housing issues and improvements needed, especially for housing within environmental justice area boundaries.

### LAND USE ELEMENT (LU)

- **Action LU-3.20 – Safe Housing.** Require all residential rehabilitation projects that use local, or HUD federal funds to comply with the Lead Safe Housing Rule, to remove lead paint hazards, depending on the nature of work and the dollar amount of federal investment in the property.



# Creating Safe and Sanitary Housing

## IMPLEMENTATION ACTIONS

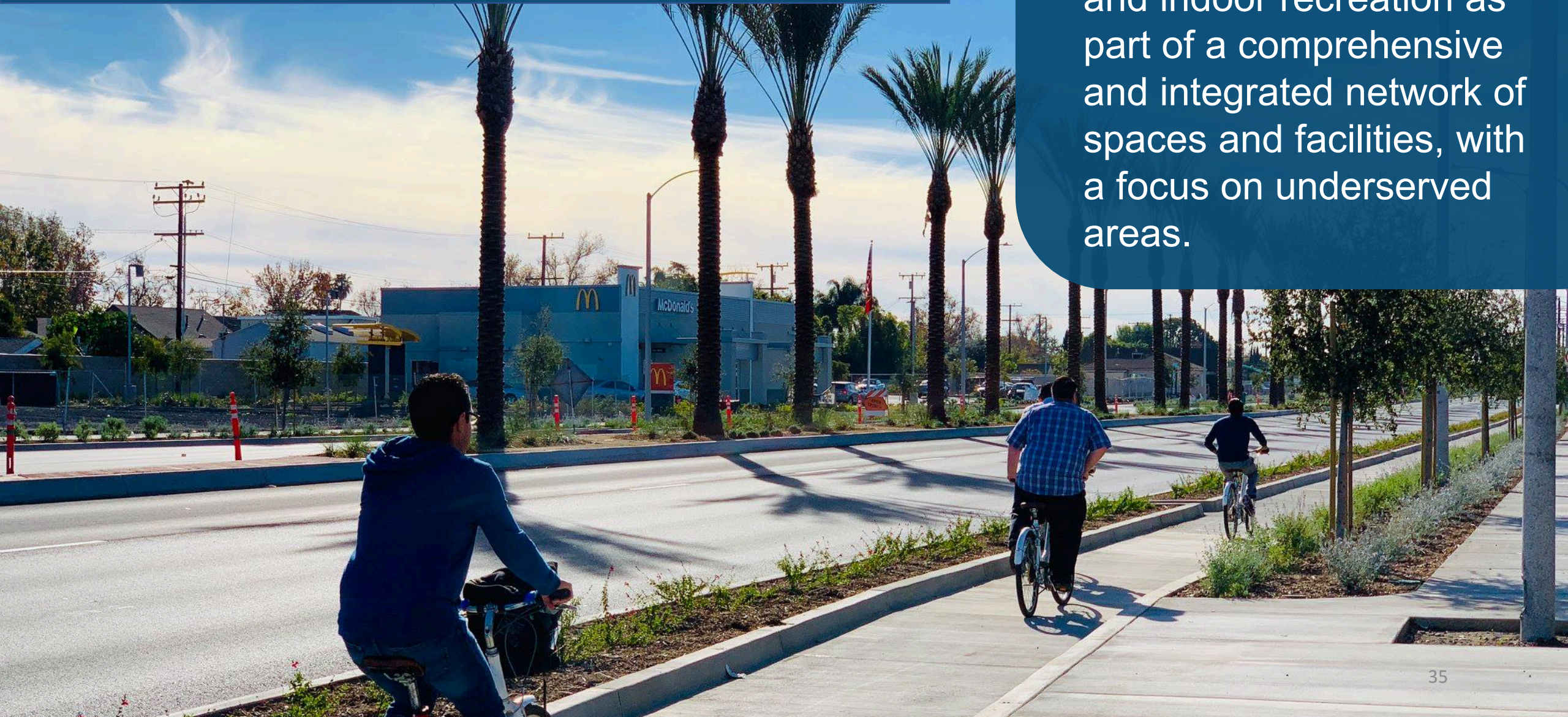
- **Action LU-3.21 – Prevention Education.** Collaborate with local organizations such as Orange County Health Care Agency and State Environmental Protection Agency and identify funds to create a Santa Ana Prevent Lead Poisoning Education Program, with special focus on disadvantaged communities and pre-1978 housing stock.
- **Action LU-3.22 – Public Health Outcomes.** Support the Orange County Health Care Agency in their role in investigating public complaints regarding lead hazards, through enforcement of local housing standards to assure healthy outcomes.





# Increasing Physical Activity

Establish new opportunities for outdoor and indoor recreation as part of a comprehensive and integrated network of spaces and facilities, with a focus on underserved areas.







# Increasing Physical Activity

## POLICIES

### COMMUNITY ELEMENT (CM)

- **Policy CM-1.4 – Shared Use.** Expand community activities and programs provided through shared use or cooperative agreements at City facilities or partner sites.
- **Policy CM-1.5 – Equitable Recreational Spaces.** Promote the development and use of municipal buildings, indoor facilities, sports fields, and outdoor spaces for recreation that serve residents throughout the city, with priority given to areas that are underserved and/or within environmental justice area boundaries.
- **Policy CM-3.3 – Healthy Residential Programs.** Invest in programs and public improvements that educate residents about opportunities to increase their physical activity and improve their health.
- **Policy CM-3.7 – Active Lifestyles.** Support programs that promote sports, fitness, walking, biking and active lifestyles.
- **Policy CM-3.8 – Underutilize Spaces.** Repurpose underutilized spaces and City-owned vacant land as a strategy to improve community health and increase the number and accessibility of opportunities for health and recreation activities. Prioritize the redevelopment of such sites within environmental justice area boundaries and other areas underserved by parks and recreation opportunities.
- **Policy CM-1.11 – Program Incentives.** Incentivize use of privately owned property to promote recreation, health, wellness, and art and culture programs.



# Increasing Physical Activity

## POLICIES

### LAND USE ELEMENT (LU)

- **Policy LU-1.3 – Equitable Creation and Distribution of Open Space.** Promote the creation of new open space and community serving amenities in park-deficient areas that keeps pace with the increase in multi-unit housing development, with priority given to those that are also within environmental justice area boundaries.
- **Policy LU-1.7 – Active Transportation Infrastructure.** Invest in active transportation connectivity between activity centers and residential neighborhoods to encourage healthy lifestyles.
- **Policy LU-2.3 – Supportive Spaces.** Provide a diversity of land uses that support residents, visitors, and businesses, such as open space, areas for community gatherings, and outdoor entertainment venues.
- **Policy LU-2.9 – Open Space Needs.** Establish and maintain public open space and recreation requirements for new residential and nonresidential uses to provide sufficient open space and recreational opportunities for Santa Ana residents and visitors.
- **Policy LU-4.8 – Community Partnerships.** Collaborate with property owners, community organizations, and other local stakeholders to identify opportunities for additional open space and community services, such as community gardens and gathering places.
- **Policy LU4.9 – Recreational Amenities.** Encourage public, private and commercial recreational facilities in areas that are park and open space deficient.





# Increasing Physical Activity

## POLICIES

### OPEN SPACE ELEMENT (OS)

- **Policy OS-1.3 – Park Standard.** Establish and maintain public parks, open space, and recreation requirements for new residential and nonresidential development to provide sufficient opportunities for Santa Ana residents and visitors. Attain a minimum of two acres of land per 1,000 persons residing in the City of Santa Ana.
- **Policy OS-1.4 – Park Distribution.** Ensure the City residents have access to public or private parks, recreation facilities, or trails in the City of Santa Ana, within 10-minute walking and biking distance of home. Prioritize provisions, programs, and partnerships in park deficient and environmental justice areas.
- **Policy OS-1.7 – Trail Connectivity.** Collaborate with other City agencies, partners, and regional entities to provide, and connect regional and local trails, travelways, and access corridors to support recreation, active transportation, and park and program access. Consider greenways along the OC Streetcar route, flood control channels, and other underutilized sites.
- **Policy OS-1.8 – Land Acquisition and Equitable Distribution.** Explore options for the acquisition of available lands for parks, open space, greenways and trail corridors, with priority given to sites that are within park deficient or environmental justice areas.
- **Policy OS-1.9 – New Development.** Ensure all new development effectively integrates parks, open space, and pedestrian and multi-modal travelways to promote a quality living environment. For new development within park deficient and environmental justice areas, prioritize the creation and dedication of new public parkland over the collection of impact fees.
- **Policy OS-1.12 – Shared Use.** Collaborate with school districts, faith-based communities, and community serving organizations to expand shared use facilities through cooperative agreements to maximize recreation options.



# Increasing Physical Activity

## IMPLEMENTATION ACTIONS

### COMMUNITY ELEMENT (OS)

- **Action CM-1.4 – Community Coordination on Underutilized Spaces.** Coordinate with community residents, property owners, and other stakeholders to identify vacant and potentially underutilized properties and strategize how such properties could be repurposed into public parks or commercial recreation facilities.

### LAND USE ELEMENT (LU)

- **Action LU-2.10 – Open Space Requirements.** Evaluate public open space and park requirements in the zoning code for residential and nonresidential uses. Consider requirements and/or incentives to aggregate public open space areas required by two or more uses to form larger and more usable areas and facilities.

### OPEN SPACE ELEMENT (OS)

- **Action OS-1.7 – Public Parkland Requirements for Residential Projects.** Update the Residential Development Fee Ordinance for Larger Residential Projects to require public parkland within City limits and a 10-minute walking distance of the new residential projects. Allow developers a reduction in on-site open space by giving credits for the provision of park land for public use. Establish a process and program to incentivize publicly accessible open space through the coordination between two or more residential projects (of any size) to create public park land and open space, such as exploring housing density bonus options.



# Increasing Physical Activity

## IMPLEMENTATION ACTIONS

- **Action OS-1.7A – Open Space and Park Land Incentives.** Allow developers a reduction in on-site open space by giving credits for park land for public use. Establish a process and program to incentivize developers to provide additional on-site and/or publicly accessible open space to create public park land and open space. Research and collaborate with residents, developers, and community organizations to design and implement an open space density bonus to incentivize the creation of additional on-site open space in exchange for more density in the project.
- **Action OS-1.10 – New Parkland.** Coordinate with property owners to explore options to provide public access and programming in park deficient areas, including options to acquire land through purchase, land dedication, easements, and land leases that would allow for permanent or temporary use of land for recreational opportunities.
- **Action OS-1.11 – Joint-Use Agreements.** Coordinate with public school districts, private schools, and other community organizations to provide community members with access to additional open space and recreational resources.
- **Action OS-1.13 – New Programming in Underserved Areas.** Partner with community organizations to offer new programs that are accessible to residents who live in areas underserved by open space and recreational facilities. Develop a comprehensive partnership policy providing guidelines that can be used throughout the City organization.
- **Action OS-1.14 – Community Partnerships.** Continue building partnerships with community-based organizations that administer social services to the elderly, youth, and other special needs groups; create use agreements for these providers to use public park facilities to meet the recreational and educational needs of these groups.
- **Action OS-1.16 – Acquisitions to Meet Park Standard.** Using the Park Master Plan as guidance, identify and acquire property within the City for park and open space use which will focus on bringing the park and recreation system to 2 acres of land per 1,000 residents with a plan to keep pace with future urban growth.



# Enhancing Civic Engagement

Increase the amount and quality of community engagement throughout the planning, development, and operation of our communities and City.





# Enhancing Civic Engagement

## POLICIES

### COMMUNITY ELEMENT (CM)

- **Policy CM-1.2 – Community Input.** Engage residents and community facility users to provide input for facility improvements and programming.
- **Policy CM-2.4 – Parent Participation.** Support education, recreation programs, and after school activities that involve parent participation to increase high school graduation and college attendance rates.
- **Policy CM-3.5 – Community Spaces.** Encourage positive community interactions and neighborhood pride to create secure communities and promote safe public spaces.
- **Policy CM-3.9 – Prevention.** Coordinate with the County Health Care Agency to promote healthier communities through education, prevention, intervention programs, and other activities that address the root causes of health disparities and inequities in Santa Ana.

### ECONOMIC PROSPERITY ELEMENT (EP)

- **Policy EP-2.4 – Community-Led Economic Development.** Support community-based economic development initiatives, such as buy-local campaign, marketing strategies, and worker cooperatives.



# Enhancing Civic Engagement

## POLICIES

### LAND USE ELEMENT (LU)

- **Policy LU-3.2 – Empower Community.** Facilitate community engagement and dialogue in policy decisions and outcomes affecting land use and development, with supplemental opportunities for proposed planning activities within environmental justice area boundaries.

### OPEN SPACE ELEMENT (OS)

- **Policy OS-2.11 – Community Involvement and Volunteerism.** Encourage residents, stakeholders, neighborhood groups, businesses, schools, social organizations, and public agencies to volunteer and partner in the development, maintenance, and activation of publicly-owned parks and recreation facilities.

### PUBLIC SERVICES ELEMENT (PS)

- **Policy PS-1.5 – Community Benefit.** Collaborate with community stakeholders to expand recreational, educational, and cultural opportunities; promote active lifestyles; and maximize community benefit.





# Enhancing Civic Engagement

## IMPLEMENTATION ACTIONS

### COMMUNITY ELEMENT (CM)

- **Action CM-1.1 – Engage EJ Communities on Recreation and Cultural Programs.** Incorporate community stakeholders from environmental justice communities into existing and/or new ad hoc committees to guide the identification of recreational and cultural programming needs and desires.
- **Action CM-1.2 – Community Conversation.** Plan for and conduct a community survey every three years related to community health, air quality concerns, parks, and community service needs, with focused outreach to environmental justice priority areas.
- **Action CM-3.5 – Environmental Education.** Encourage all education institutions in Santa Ana to include curriculum regarding environmental justice and local efforts to promote clean business operations, environmental quality, and the health in our community.
- **Action CM-3.7 – Public Health and Wellness Collaboration Summit.** Collaborate with health care providers, health and wellness advocates, and other public health stakeholders to identify ways to improve the provision of and access to health and wellness services throughout the city. Include a discussion on areas within environmental justice area boundaries and other areas underserved by parks, programs and services that support health and wellness.



# Enhancing Civic Engagement

## IMPLEMENTATION ACTIONS

### CONSERVATION ELEMENT (CN)

- **Action CN-1.3 – Proactive Engagement.** Collaborate with the South Coast Air Quality Management District and local stakeholders in environmental justice areas experiencing local air pollution issues to outline objectives and strategies for monitoring air pollution in advance of the establishment of a community emissions reduction and/or air monitoring plan.
- **Action CN-1.11 – Public Education.** Augment existing outreach programs to improve public awareness of State, regional and local agencies' roles and resources to identify, monitor, and address air quality and other environmental hazards in the community.

### HISTORIC PRESERVATION ELEMENT (HP)

- **Action HP-3.8 – Equitable Access.** Establish a fee reduction or waiver program for low-income applicants to ensure equitable access and participation in the Mills Act Program.

### LAND USE ELEMENT (LU)

- **Action LU-3.14 – Sunshine Ordinance.** Update City Sunshine Ordinance, incorporating best practices for outreach in environmental justice areas in Santa Ana.



# Enhancing Civic Engagement

## IMPLEMENTATION ACTIONS

- **Action LU-3.15 – Communication Tools.** Explore tools for communication with residents and sensitive receptors when new industrial uses are proposed in their areas.
- **Action LU-3.19 – Promote Health.** Partner with local organizations (e.g., OC Health Care Agency, Latino Health Access, Santa Ana Unified School District, and the Coalition of Community Health Centers) to increase blood lead testing, outreach, education, and referral services through a ‘promotora’ or community peer outreach model that addresses the root causes of elevated blood lead levels impacting Santa Ana residents, with special focus in environmental justice communities and for children living in pre-1978 housing.
- **Action LU-3.25 – Engage EJ Communities.** Work with community serving organizations, neighborhood leaders, and residents to form an Ad Hoc Committee to develop ongoing EJ Community Engagement programs for existing and new disadvantaged EJ communities, including multilingual communication protocols. Host biannual or quarterly Roundtable meetings with local stakeholders to guide and evaluate implementation of environmental justice policies.
- **Action LU-3.28 – Tenant Protections.** Provide information to residential tenants regarding Landlord Tenant Laws in the State, such as AB 1481, that provide protections against evictions for those who seek action to improve substandard housing and hazardous conditions.



# Enhancing Civic Engagement

## IMPLEMENTATION ACTIONS

### OPEN SPACE ELEMENT (OS)

- **Action OS-1.15 – Community Input.** Identify and utilize multilingual and interactive community engagement tools, initiated through the Parks and Recreation Master Plan, for residents and facility users to provide ongoing input about open space needs, park design, facility improvements, and programming.

### SAFETY ELEMENT (S)

- **Action S-2.5 – Business Education.** Collaborate with state and county agencies and trade organizations to educate and inform industrial business owners about permit regulations required for safe facility operations and about best practices.





## GOALS & POLICIES

The latest goals, policies, and implementation actions are available on the City's website.

[www.santa-ana.org/general-plan](http://www.santa-ana.org/general-plan)