



WATERFORD
PROPERTY COMPANY

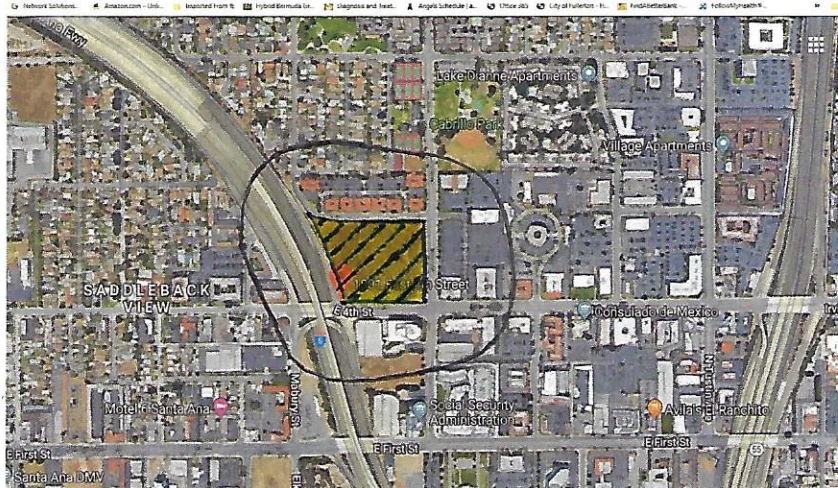
130 Newport Center Drive, Ste. 230
Newport Beach, CA 92660

WATERFORD PROPERTY COMPANY

Cordially invites you to a community
information meeting for:

Central Pointe

A mixed-use development located at 1801 East 4th Street
In Santa Ana, CA 92701



The proposed location
of Central Pointe is shown
in the highlighted cross-
hatched area.

Central Pointe will consist of 650 luxury apartment units and commercial space. Please come and share your thoughts and ideas about this new development. At the meeting we will provide general information, answer questions and solicit input on this proposed new community.

MEETING DATE AND TIME

Thursday, August 15th, 2019

6:00 pm to 7:00 pm

MEETING LOCATION

Creekside Plaza

505 N Tustin Ave, Suite 243

Santa Ana, CA 92705

If you have any questions regarding this event or if you require language interpretation Services in languages other than English, please email Sean Rawson at (949) 529-3530 or srawson@waterfordco.com