



Environmental Justice

in the City of Santa Ana General Plan





ENVIRONMENTAL JUSTICE

IN THE SANTA ANA GENERAL PLAN

This presentation will provide an overview of:

- What is environmental justice?
- Issues facing our communities
- Potential ways to improve conditions for current and future residents.



ENVIRONMENTAL JUSTICE

LEARN MORE & SHARE IDEAS



www.santa-ana.org/general-plan



newgeneralplan@santa-ana.org



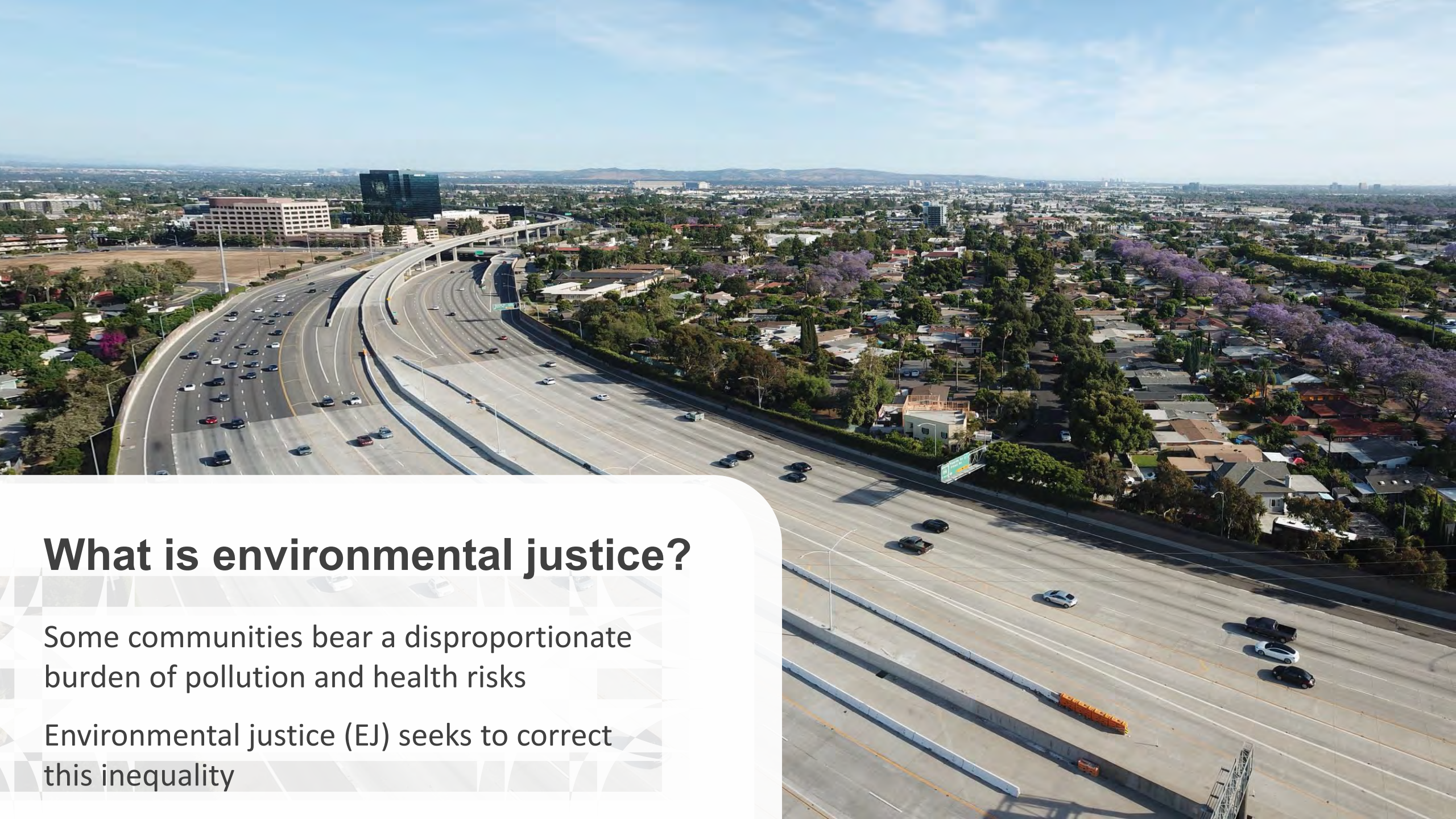
(714) 667-2781



ENVIRONMENTAL JUSTICE

IN THE SANTA ANA GENERAL PLAN

What is environmental justice?



What is environmental justice?

Some communities bear a disproportionate burden of pollution and health risks

Environmental justice (EJ) seeks to correct this inequality



Saddleback View residential neighborhood adjacent to the Santa Ana Freeway. As southern California grew, so did the traffic and roadways. Now, many live along arterials and freeways where thousands of cars and trucks pass by every day, exposing residents to air pollution.



Community-driven environmental justice

Long history of Santa Ana residents advocating for and making their communities safer and more equitable

Fairview Triangle Park

Community-driven environmental justice

In 2012, three areas along the Santa Ana River were repurposed into small pocket park and bike trails. These improvements brought open space to residents living nearby, such as those in the Artesia Pilar neighborhood.



Fairview Triangle Park



Planning for Healthy Communities Act (2016)

SB 1000 PASSES SENATE FLOOR!

Thank you legislators for supporting equitable land use policy!

#EJElement4all



Images from CCAEJ, Andre m, and PlaceWorks through CC BY-SA 3.0



SB 1000
Implementation Toolkit

Planning for Healthy Communities





Environmental justice becomes a mandatory topic for a jurisdiction's General Plan.

SB 1000 PASSES SENATE FLOOR!

Thank you legislators for supporting equitable land use policy!

#EJElement4all



Images from CCAEJ, Andre m, and PlaceWorks through CC BY-SA 3.0



SB 1000

Implementation Toolkit

Planning for Healthy Communities



What does SB 1000 require?

Cities and counties to update public policies for disadvantaged communities in order to:

- Reduce unique or compounded health risks
- Promote civil engagement in the public decision-making process
- Prioritize improvements and programs

Pacific Electric Park and Community Gardens
Photo courtesy of Lisandro Orozco



Pacific Electric Park and Community Gardens
Photo courtesy of Lisandro Orozco



ENVIRONMENTAL JUSTICE IN THE SANTA ANA GENERAL PLAN

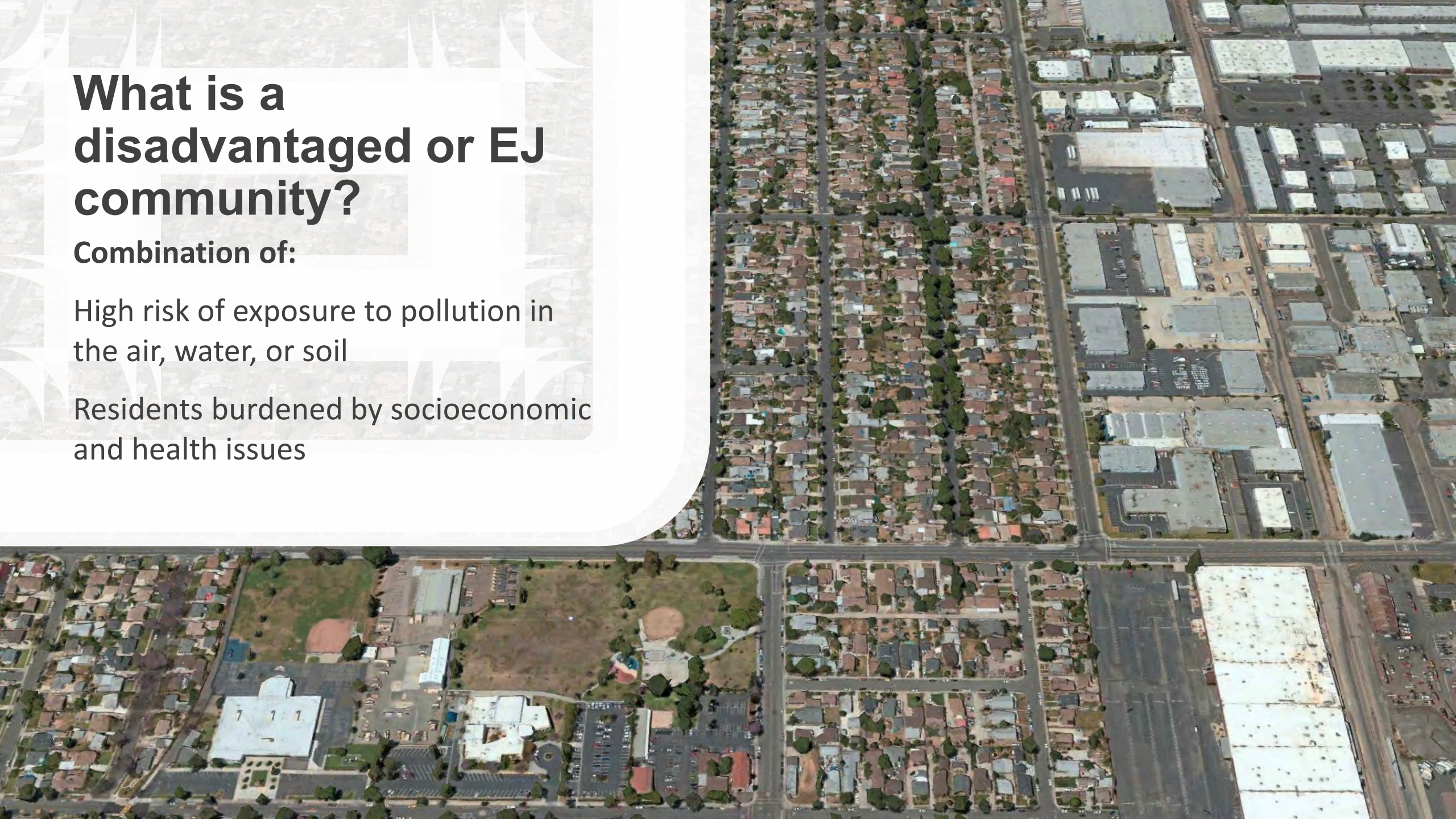
What is a disadvantaged
or EJ community?

What is a disadvantaged or EJ community?

Combination of:

High risk of exposure to pollution in the air, water, or soil

Residents burdened by socioeconomic and health issues



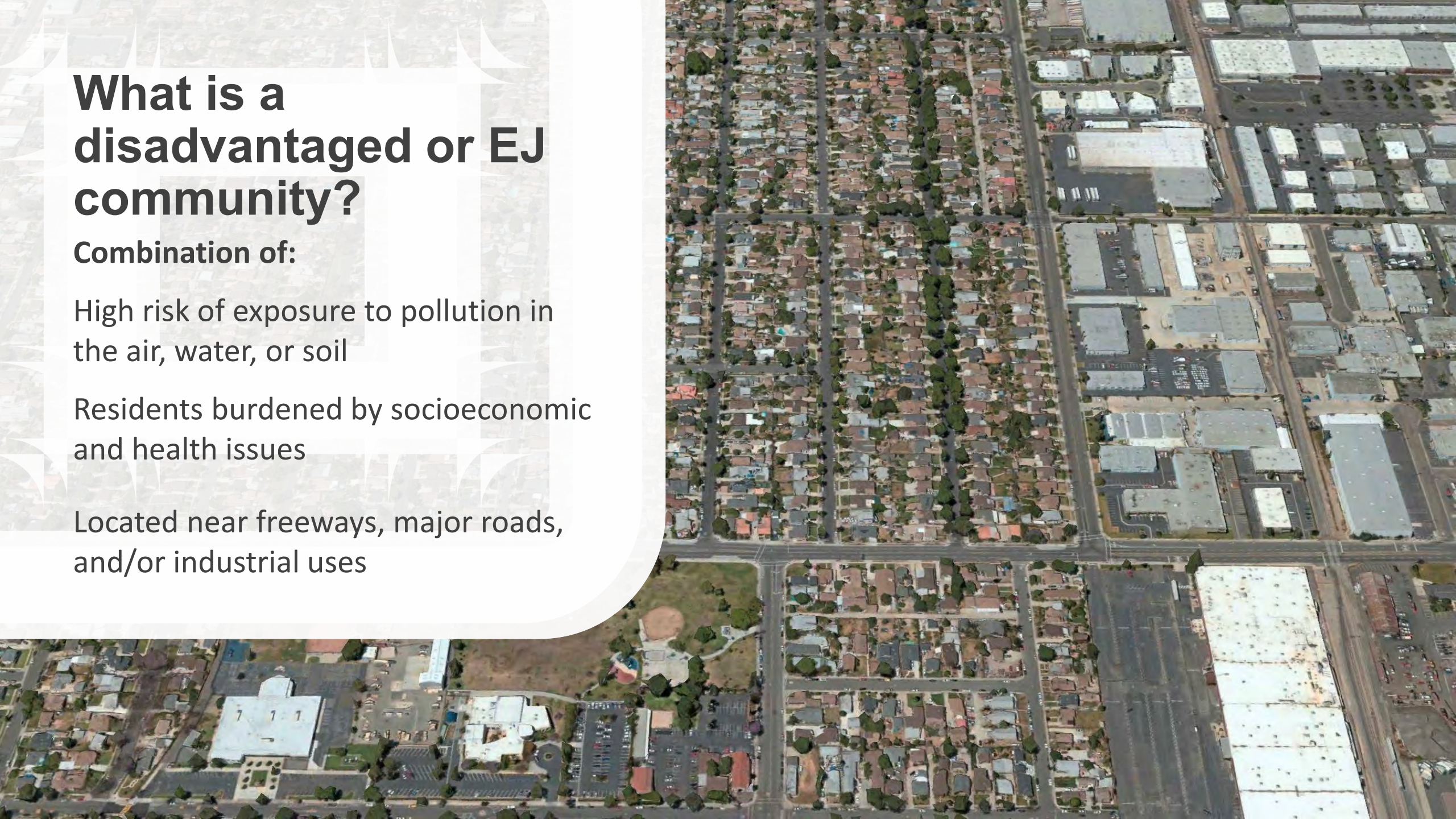
What is a disadvantaged or EJ community?

Combination of:

High risk of exposure to pollution in the air, water, or soil

Residents burdened by socioeconomic and health issues

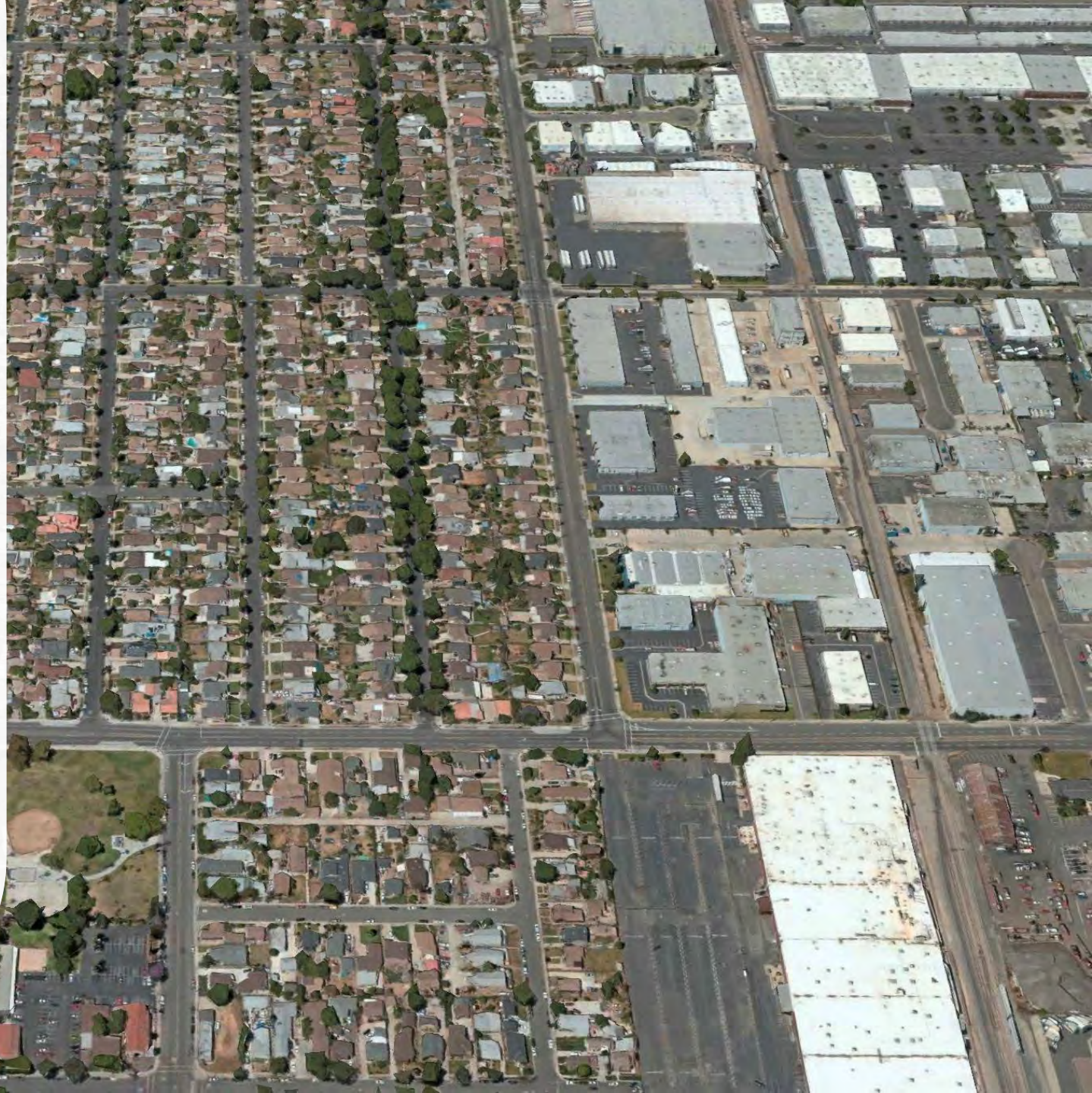
Located near freeways, major roads, and/or industrial uses



What is a disadvantaged or EJ community?

Areas with residents that face the greatest combination of pollution, health, and socioeconomic issues.

Generally receive less investment from people, businesses, and agencies, leaving residents with fewer resources and inequitable opportunities for a healthy and prosperous life.



UPDATE TO THE CALIFORNIA COMMUNITIES ENVIRONMENTAL HEALTH SCREENING TOOL



CalEnviroScreen 3.0

JANUARY 2017



Matthew Rodriguez
Secretary, California Environmental Protection Agency

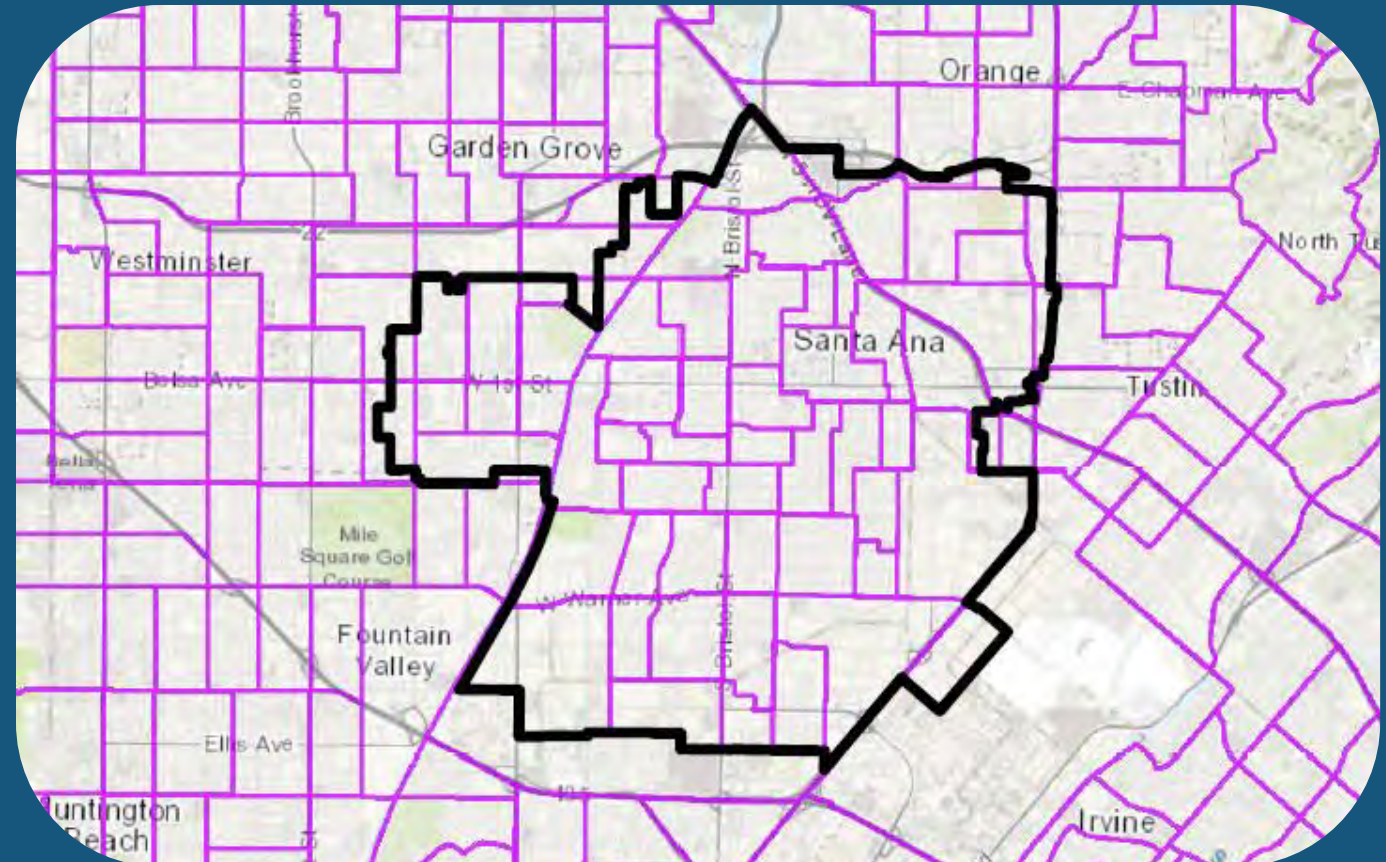


Lauren Zeise, PhD
Director, Office of Environmental Health Hazard Assessment

Mapping Tool

CalEnviroScreen (CES) from CalEPA

Evaluates all census tracts in California



CES measures 20 indicators

Pollution Burden

Population Characteristics

Exposures

Environmental Effects

Sensitive Populations

Socioeconomic Factors



Ozone



PM2.5



Solid Waste Sites and Facilities



Cleanup Sites



Diesel Particulate Matter



Drinking Water Contaminants



Groundwater Threats



Impaired Water Bodies



Toxic Releases from Facilities



Traffic



Pesticide Use



Hazardous Waste Generators and Facilities



Asthma



Cardiovascular Disease



Low Birth Weight Infants



Educational Attainment



Housing Burdened Low Income Households



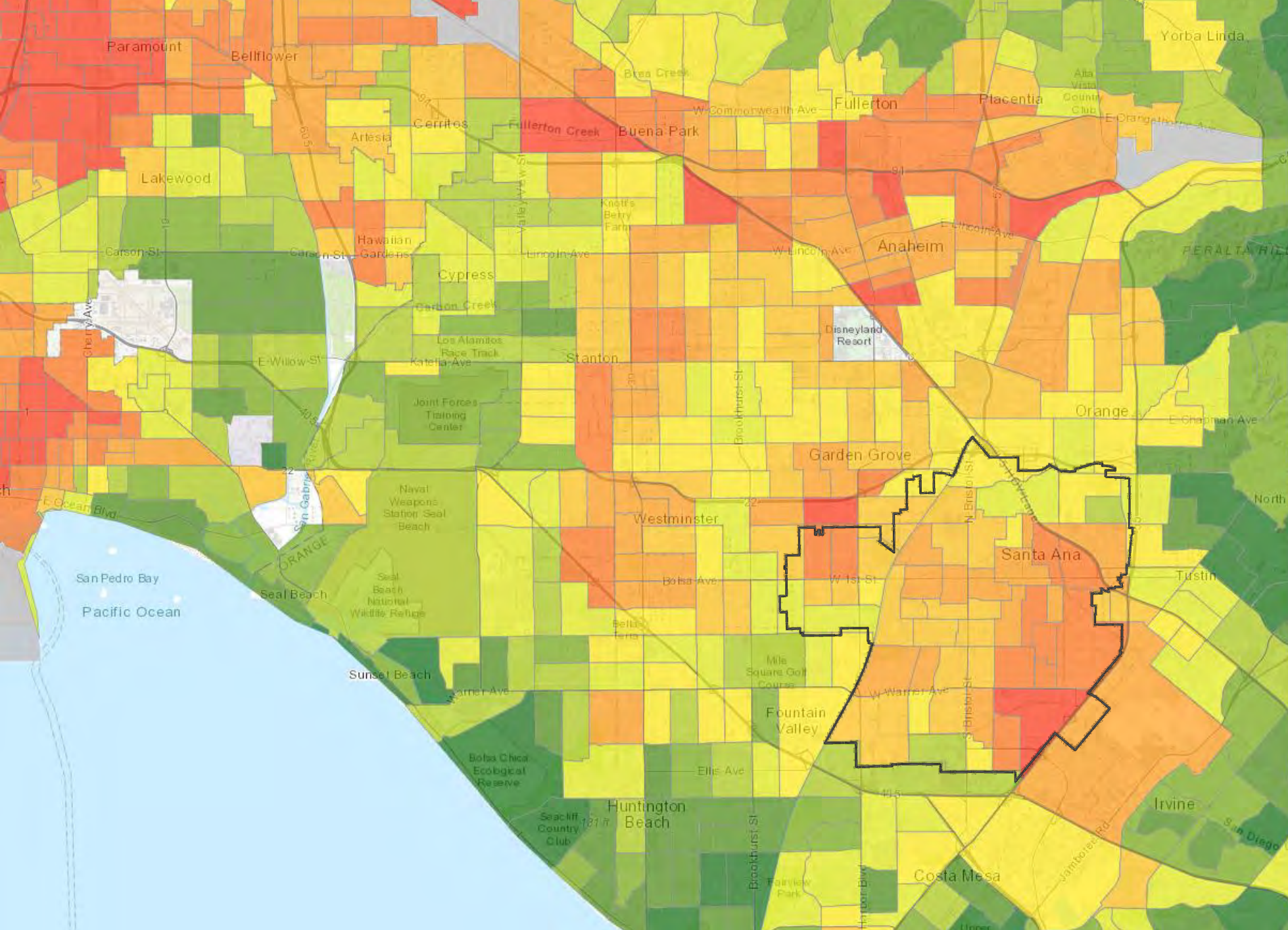
Linguistic Isolation



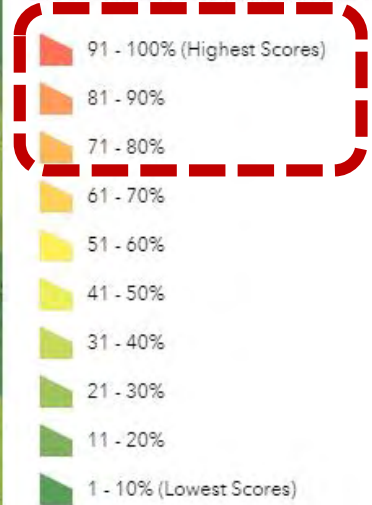
Poverty



Unemployment



CalEnviroScreen 3.0 Results (June 2018 Update)



Combined scores compared to identify lowest to highest burden

Tracts ranked from 75% to 100% are a disadvantaged or EJ community

Note: The City's approach is consistent with CalEPA methodology.

EJ communities in the City of Santa Ana

 EJ Communities

Main priorities:



Diesel Emissions



Air Quality



Groundwater Contamination



Cleanup Sites



Housing Burden



Linguistic Isolation



Low Birth Weight Infants



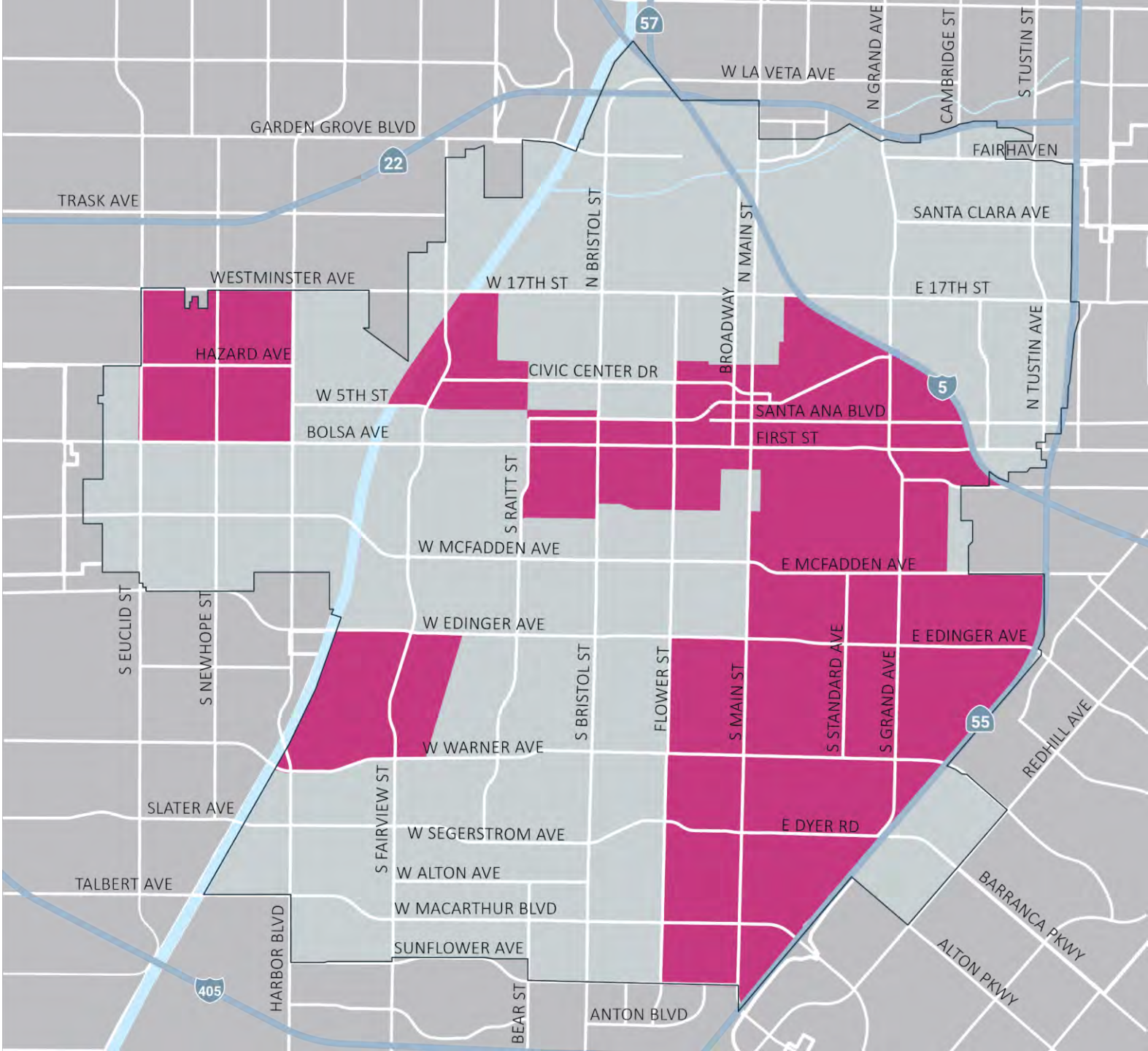
Solid Waste Sites



Poverty



Education

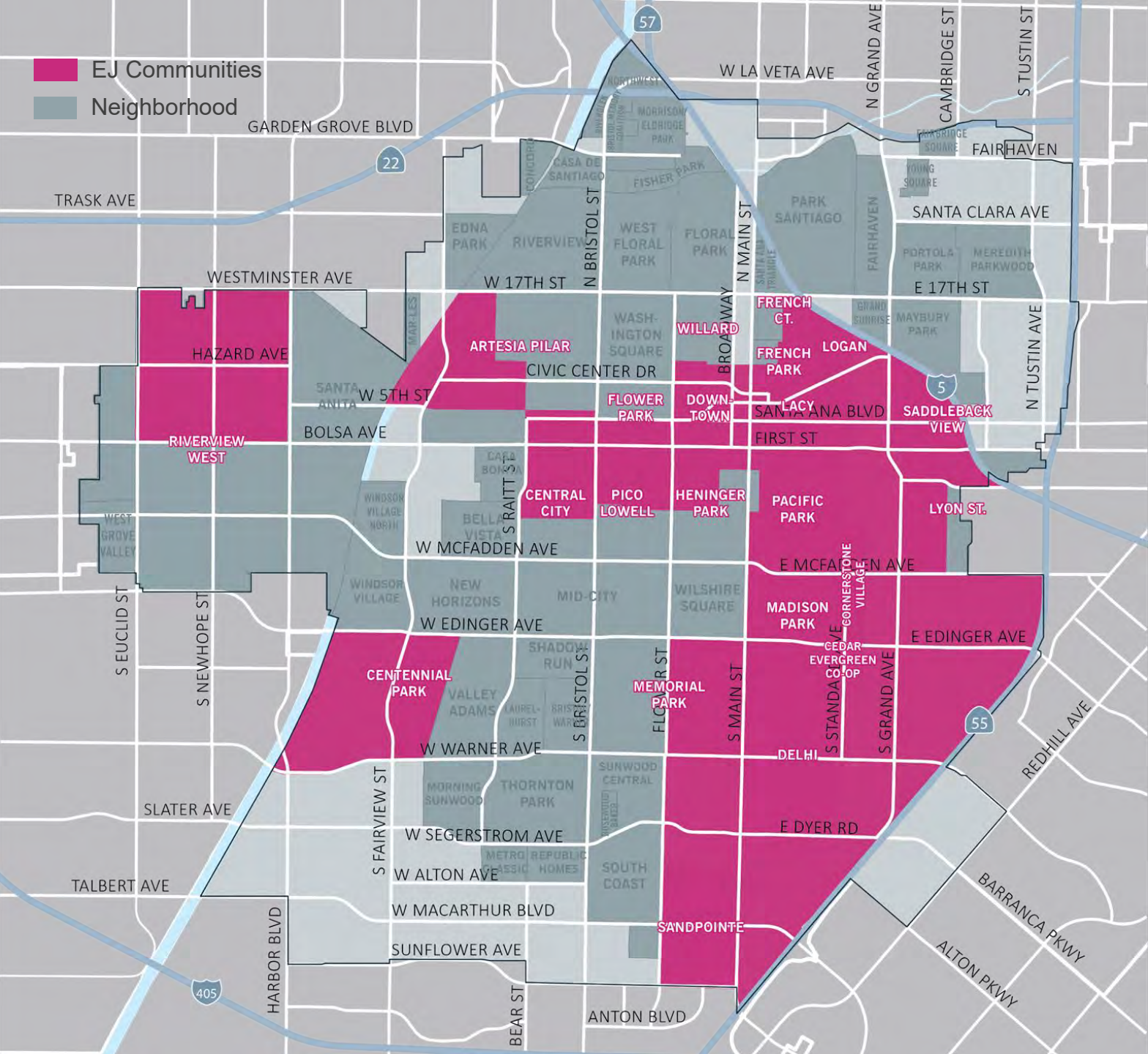


EJ communities in the City of Santa Ana

This map shows how the 17 EJ census tracts overlap with the City's Neighborhood Map.

Neighborhoods partially or entirely within an EJ area:

- Artesia Pilar • Cedar Evergreen • Centennial • Central City • Cornerstone Village • Delhi • Downtown • Flower Park • French Court • French Park • Heninger Park • Lacy • Logan • Lyon St • Madison Park • Memorial Park • Pacific Park • Pico Lowell • Riverview West • Sandpointe • Willard



Progress over the Decades in Santa Ana

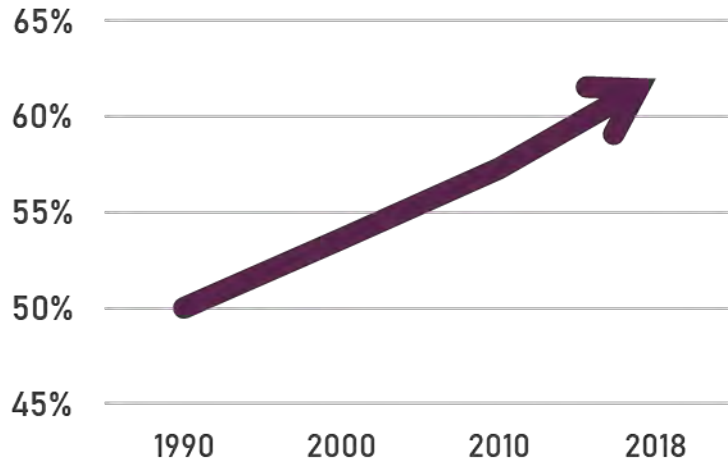


Educational
Attainment

24%

**INCREASE
IN ADULTS WITH
HIGH SCHOOL
DIPLOMA**

Adults > 25 years

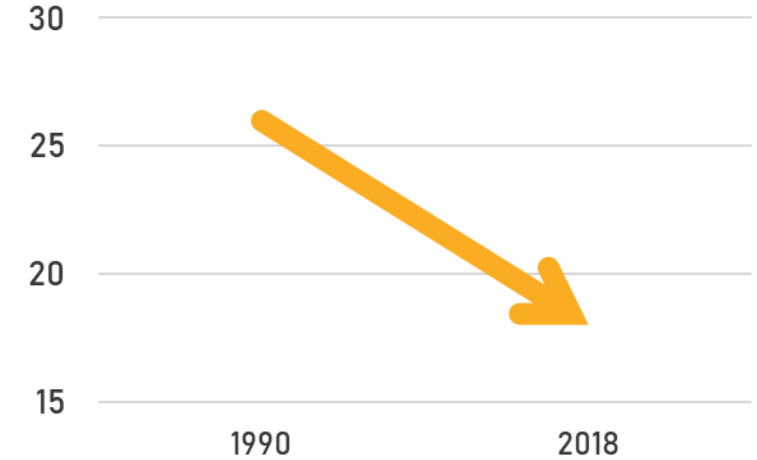


Linguistic
Isolation

31%

**DECREASE
IN LINGUISTIC
ISOLATION**

Age 14+ that speak
English less than well

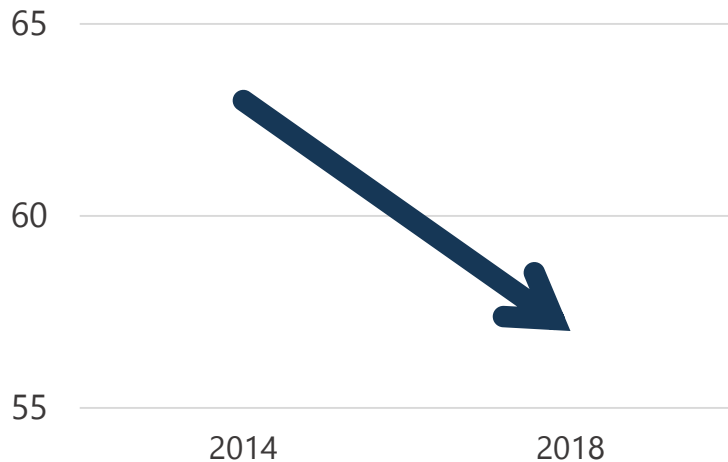


Low Birth
Weight Infants

9.5%

**REDUCTION
IN LOW BIRTH
WEIGHT INFANTS**

Cases per 1,000

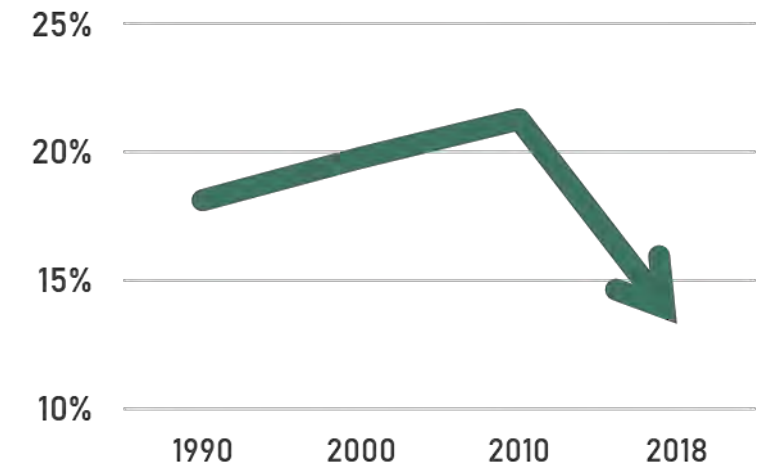


Poverty

27%

**DECREASE
IN OVERALL
POVERTY RATE**

Population living below
federal poverty level





ENVIRONMENTAL JUSTICE
IN THE SANTA ANA GENERAL PLAN

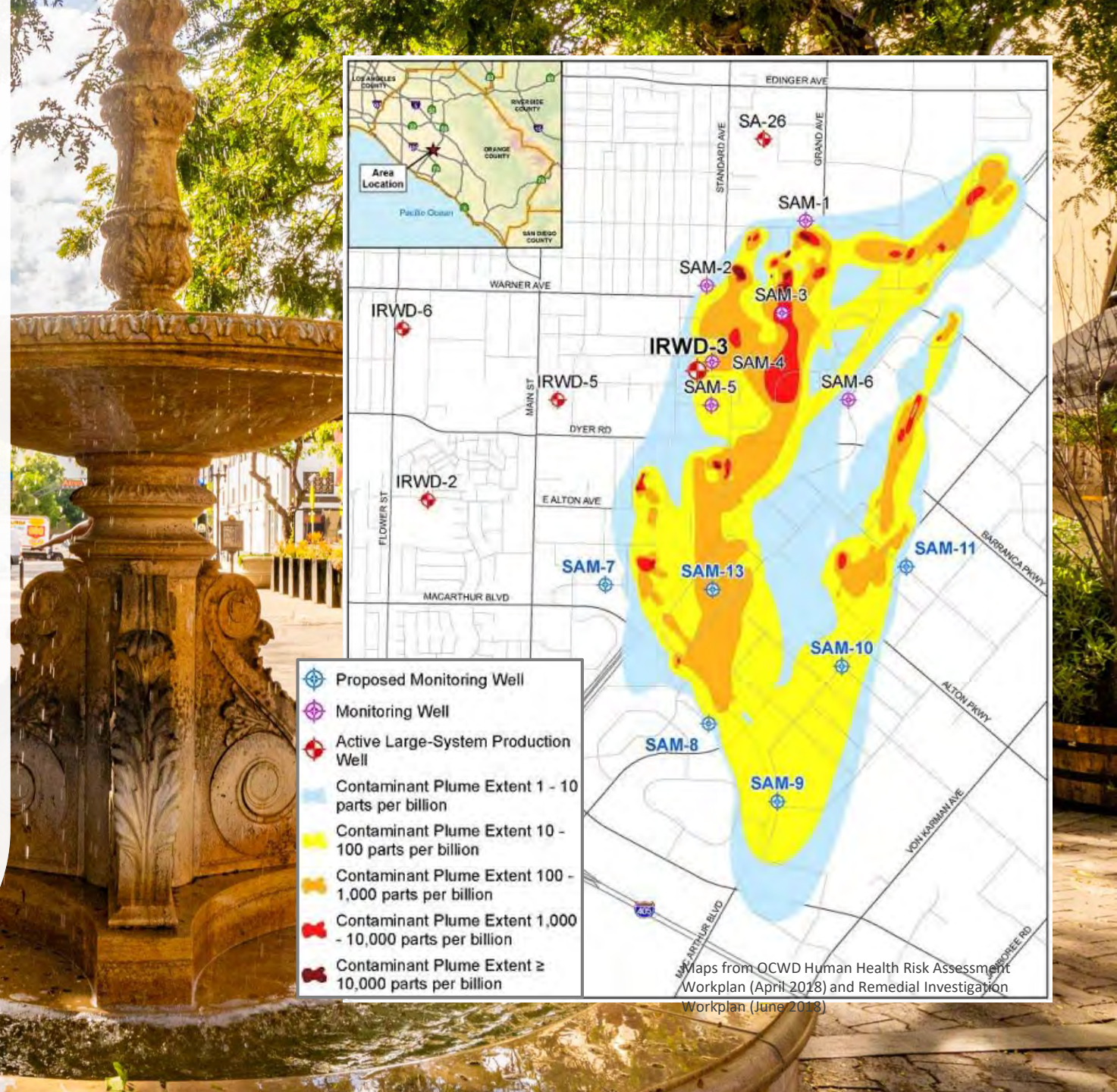
What are some issues facing
Santa Ana residents?

Water quality

Groundwater contamination in industrial area of southeast Santa Ana

Increase reliance on more costly imported water

Multi-agency effort to fix contamination issues



Maps from OCWD Human Health Risk Assessment Workplan (April 2018) and Remedial Investigation Workplan (June 2018)

Lead contamination

Potential contaminant in our soil and water

No known safe level of lead exposure

Local soils testing since 2016



Land use compatibility

Some neighborhoods in Santa Ana must contend with the impacts of living nearby industrial districts

Proximity to trash sorting facilities, auto service and salvage businesses, metal processing, chemical plants, and crematorium



Local air quality

\$185K Community Air Grant
obtained by Madison Park
neighborhood



Community-led air quality
monitoring and increased
awareness of air quality concerns



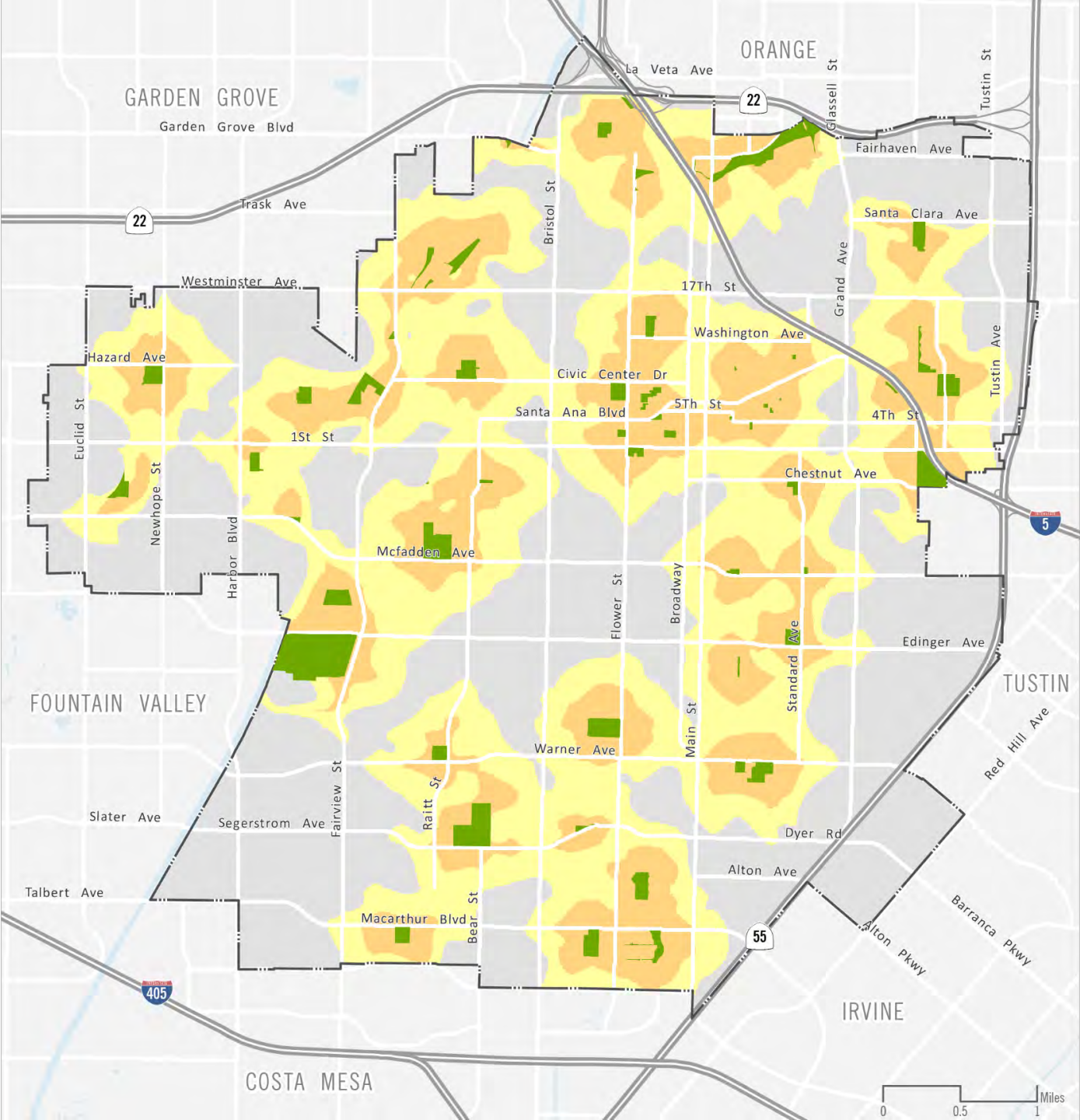
Parks and recreational resources

Santa Ana has many parks and other recreational resources

Still, many residents want more parks, especially within walking distance of their homes

Walking Distance from Parks

- Existing and Proposed Parks
- 1/4 mile
- 1/2 mile





Parks and recreational resources

New parks that serve EJ communities

\$6.2 million in grants for three new parks

Walking Distance from Parks


 Existing and Proposed Parks

 1/4 mile

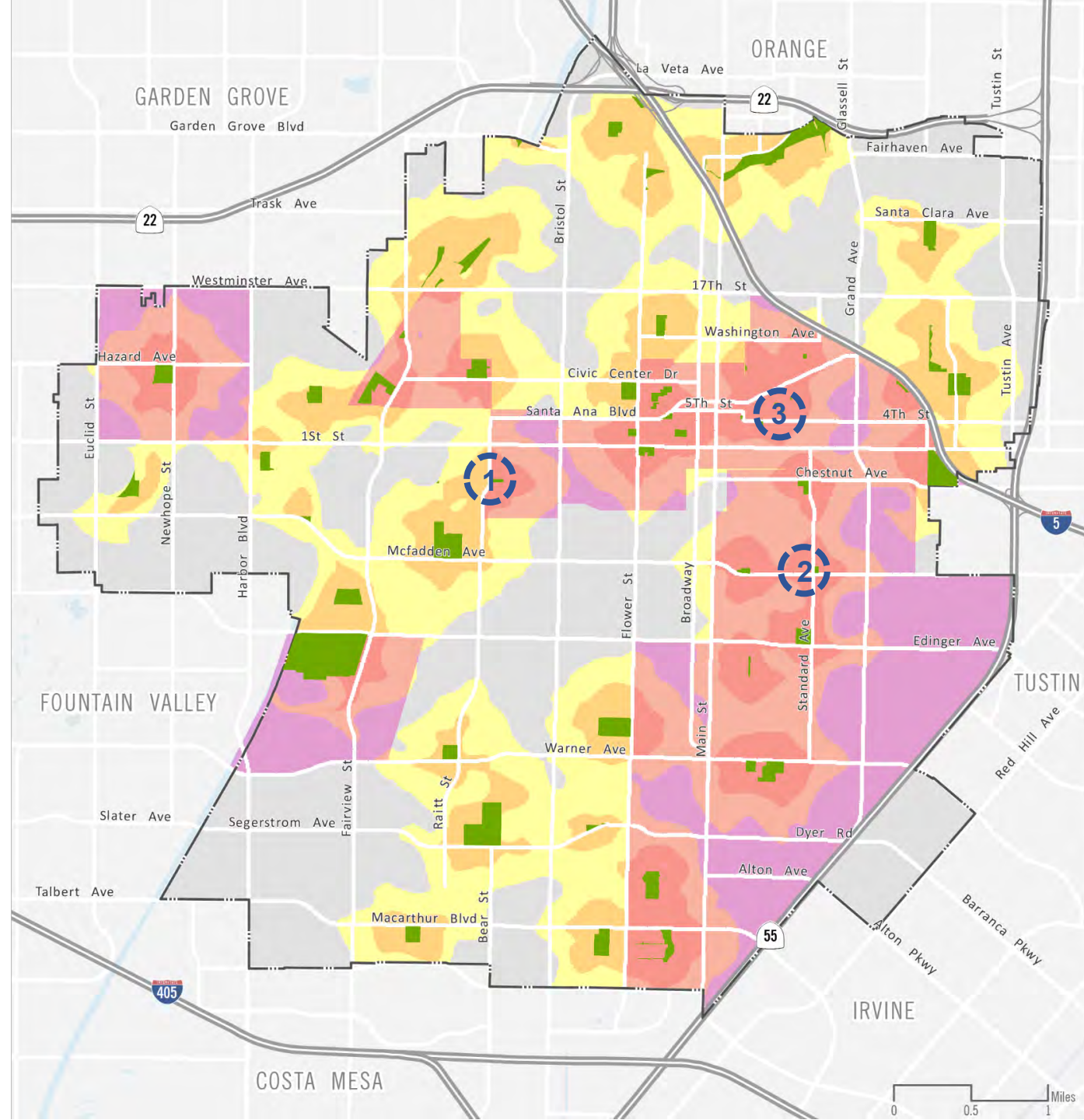
 1/2 mile

 EJ Communities

 1 Raitt & Myrtle

 2 McFadden & Standard

 3 Mariposa Park



Parks and recreational resources



Pacific Electric Park

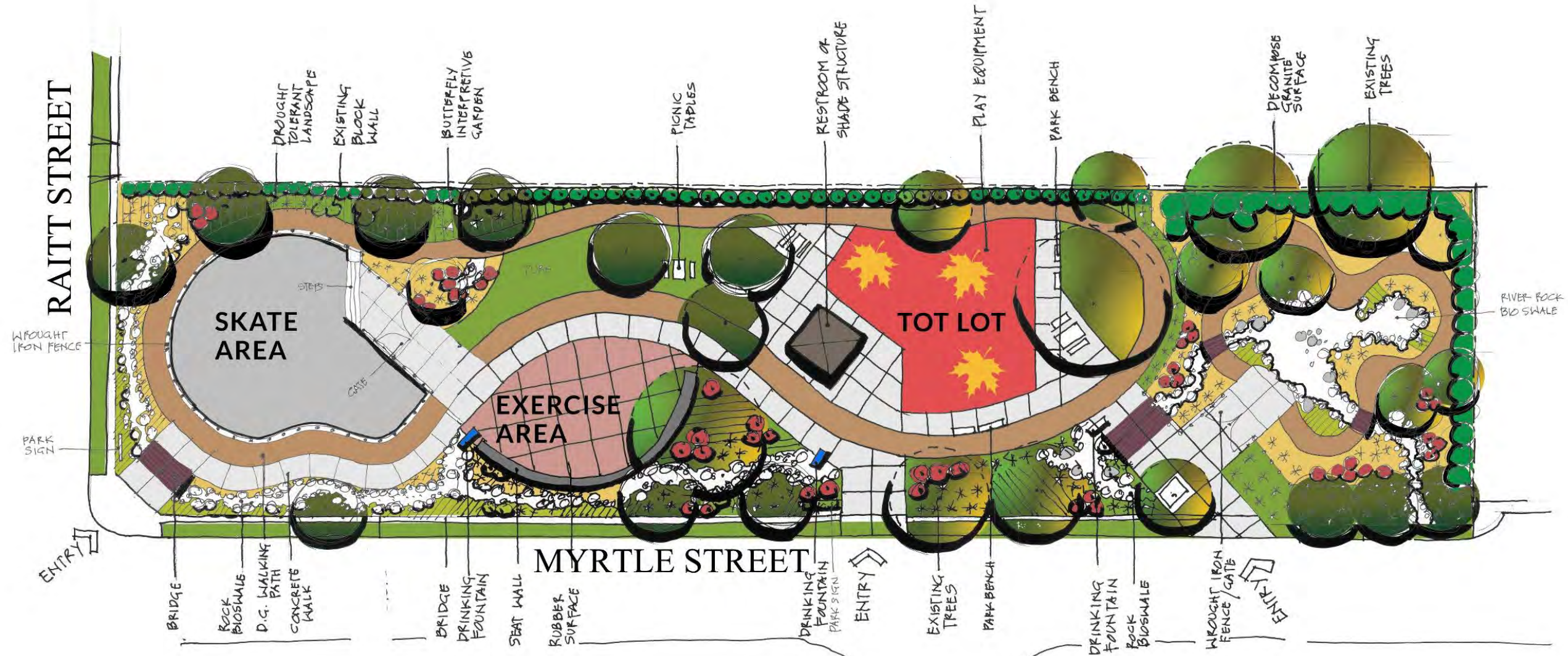
Parks and recreational resources



Mariposa Park

Parks and recreational resources

Raitt and Myrtle park design concept



Who we are talking to in the community



GENERAL PLAN ADVISORY GROUP

COMMUNICATION LINKAGE FORUM

NEIGHBORHOOD ASSOCIATIONS IN EJ AREAS

Artesia Pilar ● Cedar Evergreen ● Centennial ● Central City ● Cornerstone Village ● Delhi ● Downtown ● Flower Park ● French Court ● French Park ● Heninger Park ● Lacy ● Logan ● Lyon St ● Madison Park ● Memorial Park ● Pacific Park ● Pico Lowell ● Riverview West ● Sandpointe ● Willard

YOUTH PROGRAMS

City of Santa Ana Youth Commission ● Santa Ana Public Library TeenSpace ● Nicolas Academic Center ● Resilience Orange County ● Invest in Youth Santa Ana

BUSINESSES

Santa Ana Chamber of Council ● Santa Ana Business Council ● Santa Ana Merchants Association ● South Main Street businesses ● Downtown Inc

COMMUNITY BASED ORGANIZATIONS AND COALITIONS

Delhi Center ● El Centro Cultural de Mexico ● Latino Health Access ● Kennedy Commission ● KidWorks ● Orange County Communities Organized for Responsible Development ● Orange County Environmental Justice ● Project Kinship ● Santa Ana Building Healthy Communities ● Santa Ana Senior Center ● Southwest Senior Center ● The Cambodian Family ● The LGBT Center Orange County



ENVIRONMENTAL JUSTICE

IN THE SANTA ANA GENERAL PLAN

What changes are proposed?



ENVIRONMENTAL JUSTICE IN THE SANTA ANA GENERAL PLAN

The City is considering changes to its **goals, policies, and actions** that will improve existing and future conditions for all of Santa Ana, with a focus on those in greatest need of help and protection.

Consistent with our General Plan Shared Vision and Core Values, the potential changes will emphasize the following **six approaches**:



Reducing exposure to pollution

Develop strategies and support regulations that will help reduce exposure to air pollution and hazardous materials.

A clear view of the mountains over Santa Ana
Photo courtesy of Lisandro Orozco

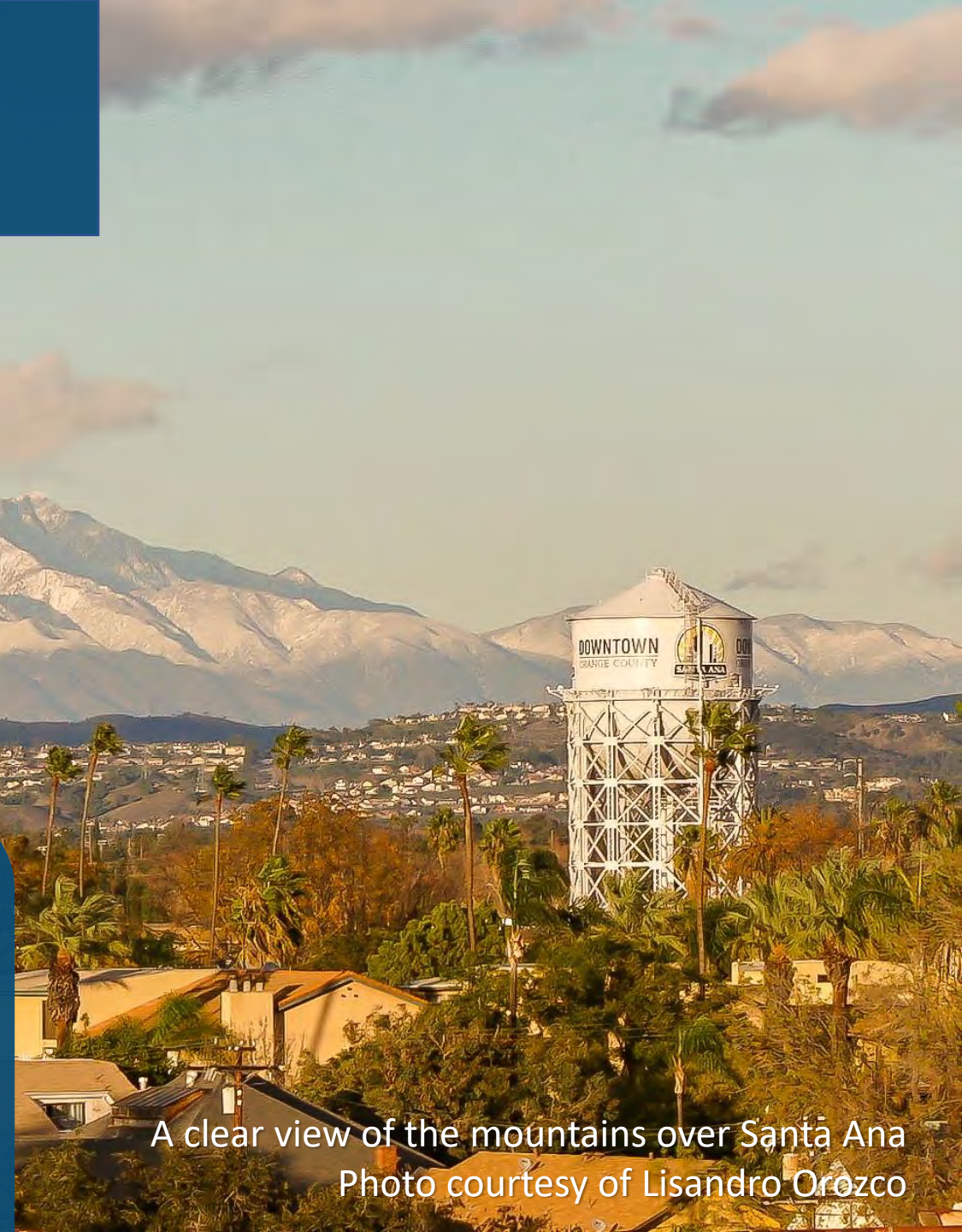




Reducing exposure to pollution

POTENTIAL ACTION

Coordinate with SCAQMD and local stakeholders to pursue a **Priority Community designation** for eligible environmental justice areas of the City



A clear view of the mountains over Santa Ana
Photo courtesy of Lisandro Orozco



Improving public facilities

Increase access to community health facilities, parks, community centers, and other public services and facilities, particularly in underserved areas.

JOE MACPHERSON
CENTER FOR OPPORTUNITY



GREAT FUTURES START HERE



BOYS & GIRLS CLUB
OF SANTA ANA



Improving public facilities

POTENTIAL ACTION

Conduct a **Community Survey** in 2021 (and every 3 years after) - related to community health, air quality concerns, and community service needs, with focused outreach to environmental justice areas.



BOYS & GIRLS CLUB
OF SANTA ANA



Promoting healthy food



Improve the health and wellness of all residents through policies, regulations, and programs that foster healthier food options.



Promoting healthy food



POTENTIAL ACTION

Identify neighborhoods with limited healthy food sources and prioritize for development of healthy food options (i.e., grocery stores, farmers markets, and community gardens).



Creating safe and sanitary housing



Add to existing efforts to reduce health hazards associated with construction materials, building standards, and deferred maintenance.



Creating safe and sanitary housing



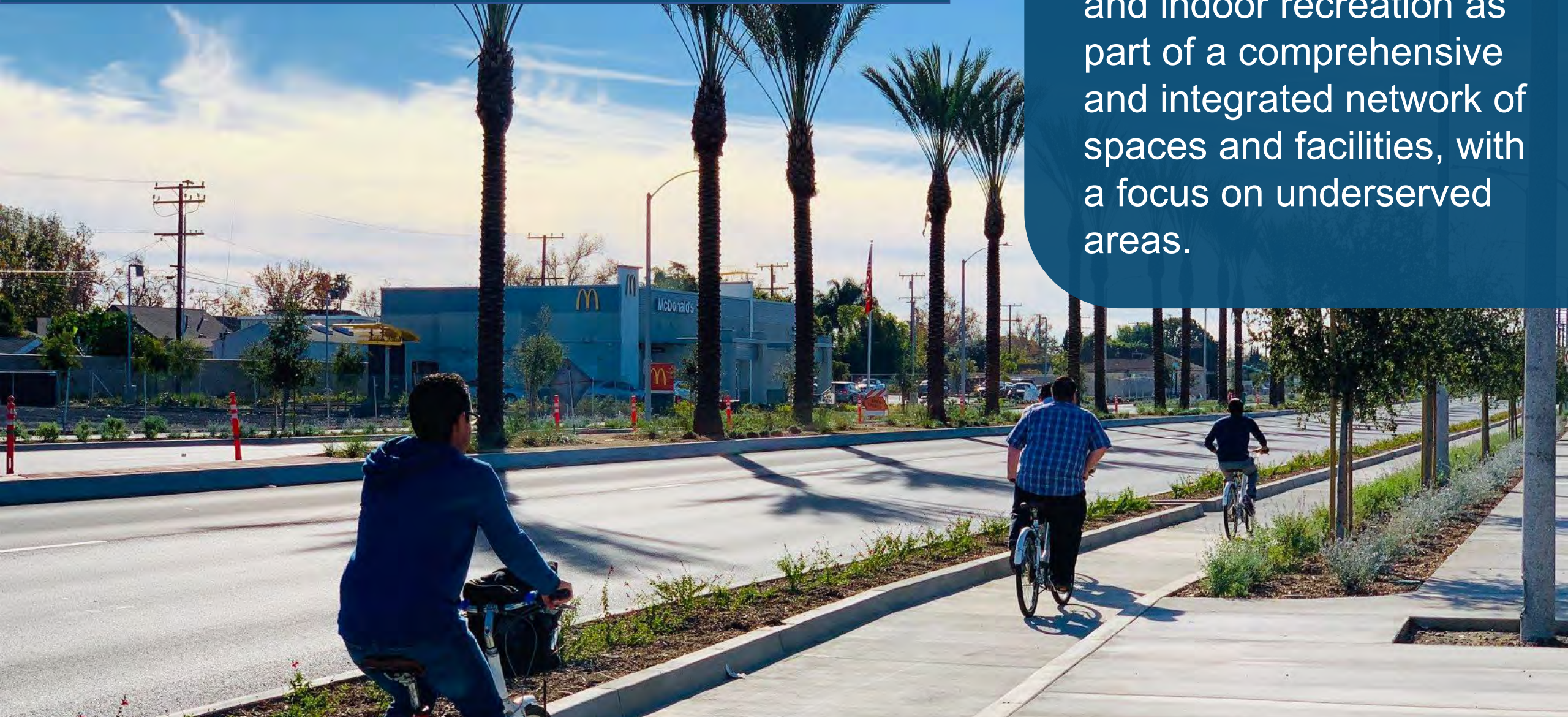
POTENTIAL ACTION

Collaborate with residents and industry stakeholders to create an **incentive and amortization program** to relocate existing **heavy industrial uses** adjacent to sensitive uses.



Increasing physical activity

Establish new opportunities for outdoor and indoor recreation as part of a comprehensive and integrated network of spaces and facilities, with a focus on underserved areas.





Increasing physical activity

POTENTIAL ACTION

Complete citywide **Parks and Recreation Master Plan** to identify strategies to provide additional parks, recreational facilities and activities





Enhancing civic engagement

Increase the amount and quality of community engagement throughout the planning, development, and operation of our communities and City.





Enhancing civic engagement



POTENTIAL ACTION

Create an Environmental Quality City **Interagency Team** and **website** for vetting community concerns, sharing information, and supporting a forum to address air quality and environmental hazards issues



DRAFT GOALS & POLICIES

The latest draft **goals, policies, and implementation actions** will be made available on the City's website in **August 2020**.

www.santa-ana.org/general-plan/environmental-justice

NEXT STEPS



2017
GP Advisory Group

2015/16
The First
Conversations

2018/19
Policy Framework and
Land Use Concepts

Attend virtual outreach meetings
to learn more and ask questions

Download info from
the City's website

MAY 2020

JULY/AUGUST 2020

JUNE 2020

www.santa-ana.org/general-plan
Watch a presentation and
review the latest draft goals
and policies related to
environmental justice

LATE 2020

Adopt our Santa Ana
General Plan



LEARN MORE & SHARE YOUR IDEAS



www.santa-ana.org/general-plan



newgeneralplan@santa-ana.org



(714) 667-2781



INFO & RESOURCES

EQUITY

ENVIRONMENTAL JUSTICE
In the City of Santa Ana General Plan

EDUCATION

HEALTH

SUSTAINABILITY

CULTURE

We are updating our General Plan and want to hear your thoughts on how to best address environmental justice issues affecting your community. Many of our neighborhoods have experience with environmental conditions that are of concern.

WHAT IS ENVIRONMENTAL JUSTICE?
Throughout our communities, some bear a disproportionate burden of pollution and associated health risks. Environmental justice seeks to correct this through by reducing pollution and increasing public investments in these communities, while also ensuring that input is considered in decisions that affect them.

WHAT IS AN EJ COMMUNITY?
An environmental justice community is an area of the City where residents have the highest risk of exposure to pollution in the air, water, and soil. This pollution may be created by passing vehicles, cars and trucks or by the daily activities of businesses and industries. Residents in these areas also tend to be of lower socioeconomic and health status, such as higher rates of language barriers, poverty and asthma.

Such areas also tend to experience lower rates of investment and improvement from individual, private companies, and public agencies. All of these factors can lead to unequal opportunities to lead a healthy and prosperous life.

Recent state law (SB 100) requires all cities and counties to update public policies to address environmental justice. In Santa Ana, we are seeking to build upon the important work that our residents have already started to improve conditions for residences, children's centers, schools, medical facilities, senior care centers, and parks & recreation facilities in these communities.

ENVIRONMENTAL JUSTICE COMMUNITIES IN SANTA ANA
The map below shows the combined boundaries of 17 census tracts in Santa Ana that are considered environmental justice communities.

The priorities to address in our communities include:

- Diesel Emissions
- Air Quality
- Green-building Certification
- Cleanup Sites
- Traffic Density
- Housing Burden
- Linguistic Isolation
- Low Birth Weight Infants
- Poverty

Map developed on CalEnviroScreen 3.0 data published by CalEPA. MAY 2019

City Fact Sheet

CalEnviroScreen 3.0 Overall Results and Individual Indicator Maps

from OEHPA

Pollution Burden | Population Characteristics | Overall Results

Pollution Burden | Ozone | PM 2.5 | Diesel PM | Drinking Water | Pesticides | Toxic Releases | Traffic | Cleanups | Groundwater

Overall CalEnviroScreen scores are calculated from the scores for two groups of indicators: Pollution Burden and Population Characteristics.

This map shows the combined Pollution Burden scores, which is made up of indicators from the Exposures and Environmental Effects components of the CalEnviroScreen model. Pollution burden represents the potential exposures to pollutants and the adverse environmental conditions caused by pollution.

To explore this map, zoom to a location or type an address in the search bar. Click on a census tract to learn more about the indicator data. The 12 Pollution Burden indicator maps can be viewed by clicking on the tabs across the top. Click on the Population Characteristics tab at the very top to access the 8 Population Characteristics maps.

A report with detailed description of indicators and methodology and downloadable results are available at the [CalEnviroScreen 3.0 website](#).

City of Huntington Beach, County of Los Angeles, Bureau of Land Management, Esri, HE... esri

CalEnviroScreen Interactive Maps

UPDATE TO THE CALIFORNIA COMMUNITIES ENVIRONMENTAL HEALTH SCREENING TOOL

CalEnviroScreen 3.0

JANUARY 2017

CalEPA
California Environmental Protection Agency

Matthew Rodriguez
Secretary, California Environmental Protection Agency

OEHPA
Office of Environmental Health Hazard Assessment

Lauren Zebe, PhD
Director, Office of Environmental Health Hazard Assessment

CalEnviroScreen Report

CalEnviroScreen 3.0 Factsheet

OEHPA
Office of Environmental Health Hazard Assessment

CalEPA
California Environmental Protection Agency

What is CalEnviroScreen?
CalEnviroScreen is a science-based mapping tool that helps identify California communities that are most affected by many sources of pollution, and that are often especially vulnerable to pollution's effects. CalEnviroScreen uses environmental, health, and socioeconomic information to produce a numerical score for each census tract in the state.

The results are directed on maps so that different communities can be compared to one another. A census tract with a high score is one that experiences higher pollution burden and vulnerability than census tracts with low scores. CalEnviroScreen ranks census tracts based on data that are available from state and federal government sources. CalEnviroScreen 3.0 is the most current version and was released in January 2017.

Who developed CalEnviroScreen?
Office of Environmental Health Hazard Assessment (OEHPA)
California Environmental Protection Agency (CalEPA)

Uses of CalEnviroScreen

- To identify California's most environmentally burdened and vulnerable communities.
- To assist CalEPA's boards and departments with decisions, such as prioritizing resources and cleanup activities.
- Disadvantaged communities in California are targeted for investment of proceeds from the State's cap-and-trade program. CalEPA designated census tracts with the highest CalEnviroScreen scores as disadvantaged communities for investing cap-and-trade proceeds.
- Used by CalEPA's Environmental Justice Task Force and other state entities as guidance in allocating grants and in other decisions.

The CalEnviroScreen Model

- is made up of a suite of 20 statewide indicators of pollution burden and population characteristics associated with increased vulnerability to pollution's health effects.
- Uses a weighted scoring system to derive average pollution burden and population characteristics scores for each census tract.
- Calculates a final CalEnviroScreen score for a given census tract relative to the other tracts in the state by multiplying the pollution burden and population characteristics components together.
- The score measures the relative pollution burden and vulnerabilities in one census tract compared to others and is not a measure of health risk.

Each color represents 80% of scores

The map shows the CalEnviroScreen 3.0 scores for the entire state. The score for each census tract is shown in a color gradient.

CalEnviroScreen 3.0 Results

Lowest Scores

Highest Scores

CalEnviroScreen Fact Sheet

www.santa-ana.org/general-plan/environmental-justice



ENVIRONMENTAL JUSTICE
IN THE SANTA ANA GENERAL PLAN

THANK YOU!

**We look forward to continuing to build
a path toward a healthier and more
equitable Santa Ana.**