



Welcome to the *WISEPlace* *Supportive Housing Virtual* *Community Meeting!*

Tips and Tricks before we begin:

While viewing today's meeting

1. Please keep your microphone muted.
2. You can enable or disable your camera.
3. The meeting is being recorded.

We will begin with a presentation and answer questions at the end. During the presentation, if you have a question please:

- Write questions in the Chat box.
- If you are on the phone, we will unmute you at the end of the meeting during Q&A and you can ask a question at that time.



Jamboree



WISEPlace Supportive Housing

Brateil Aghasi, CEO, WISEPlace

Casey Harris, Sr. Project Manager, Jamboree

Evanne St. Charles, Sr. Associate, Architectural Resources Group



Who Is WISEPlace- A Community of Hope & Housing

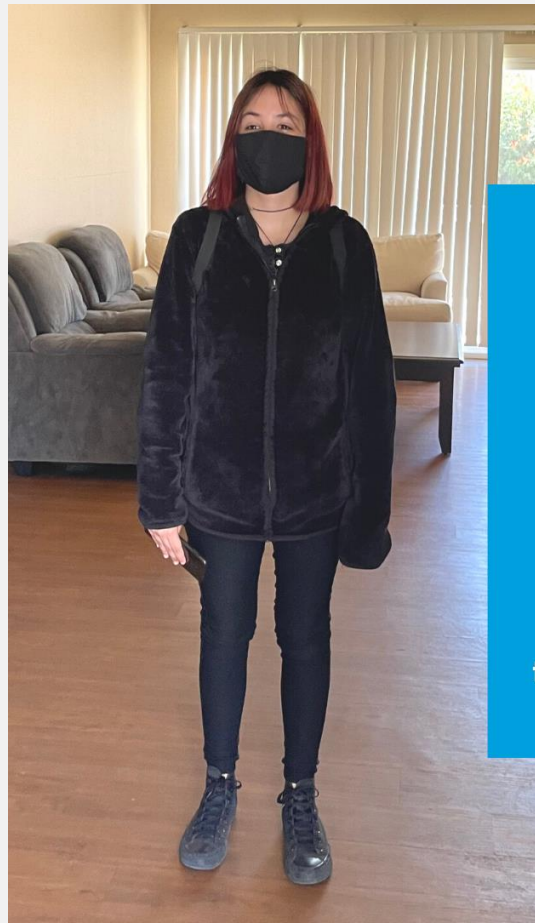


- Served over 8,400 women since 1924
- 1 in every 3 homeless adults is an unaccompanied woman
- 67% survivors of domestic violence



WISEPlace- Wrap Around Services

- Safe Shelter & Basic Necessities
- Weekly Case Management
- Clinical Counseling
- Healthcare, Dental & Vision
- Employment & Income/Savings
- Life Skills & Weekly Activities
- Recovery Meetings



“I’m filled with hope thanks to WISEPlace. Being young and homeless was so stressful that I didn’t have the energy to think about my own future. WISEPlace gave me the support and encouragement to follow my dreams.”

- Ceara

WISEPlace- Outcomes That Create Change



"For once in my life I was not frightened and scared. At WISEPlace, I was supported and empowered to find my path. Now, I have the warmth and security of a home. *It's a new beginning for me.*"

-Sylvia



- 77% from shelter to housing
- 90% retain housing
- 73% increased income & savings
- 70% obtain employment
- 100% increased knowledge in financial literacy and their own customized budget

Jamboree is a Nonprofit Corporation founded in 1990



Mission

Jamboree delivers high quality affordable housing and services that transform lives and strengthen communities

Vision

Every person will live in a strong, healthy, sustainable community

State-Wide

Jamboree is California's second largest non-profit developer of affordable housing

Who is Jamboree

93+
properties 

9,000+
units

11
california
counties

78+
staff

\$3.2B
portfolio
value

1
mission 

18,800+
residents 

200+
partners

100+
quality awards 

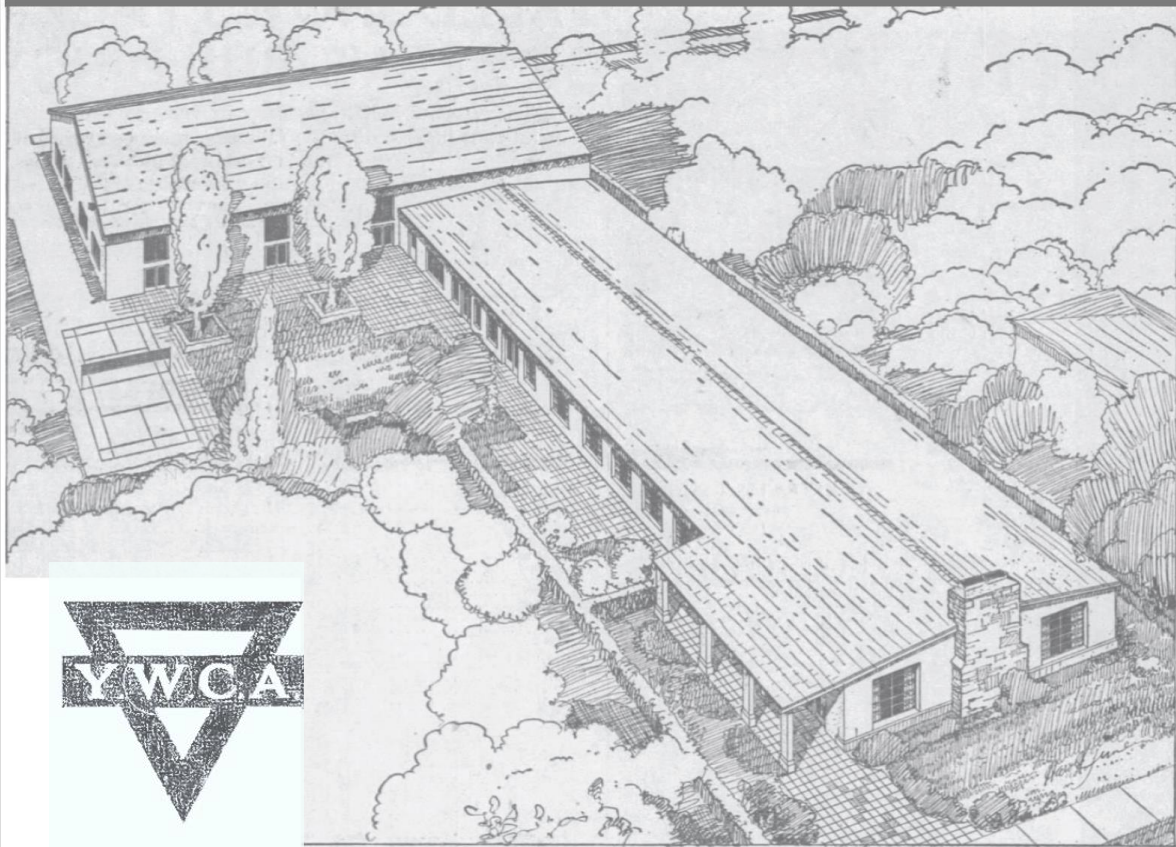
44+
cities

3,800+
supporters 

\$627M
pipeline

45+
joint
ventures

Historical Preservation



YWCA HOME—Sketch of Santa Ana-Tustin YWCA building scheduled for construction.

A Comparison: Perspective from Broadway



Proposed View



Existing View



What is Supportive Housing?

-Supportive Housing combines high-quality affordable housing with population-specific supportive services designed to help individuals and/or families stay housed and stabilized.

-This type of housing best serves chronically homeless individuals and families, and those with other special needs or disabilities.



WISEPlace Supportive Housing

- Spanish Colonial Revival style blends seamlessly with existing neighborhoods, while also preserving the historical nature of building
- Indoor/Outdoor living design throughout
- New and dedicated community and supportive service space



WISEPlace Supportive Housing

- 47 studio homes, and 1 two-bedroom for onsite property manager
- Future residents will pay no more than 30% of their income on rent
- Extremely low-income, unaccompanied women experiencing homelessness



Operations

- 24/7, onsite property manager
- Security gates, surveillance cameras, advanced voice-down system, and keyless entry system
- Visitation protocols for nonresidents

SUPPORTIVE HOUSING IS A PLATFORM FOR **SERVICE DELIVERY**



Some examples of service programming include:

- Connecting residents to available services and programs that already exist in the community
- Coordination of social and community-building activities, as well as volunteer opportunities on- and offsite
- Delivery of supportive health and wellness services, including individual and peer counseling
- Partnerships with different agencies to provide onsite educational classes including basic life skills training and financial literacy courses



Thank You!

Contact: info@wiseplace.org

Future updates:

wiseplace.org/wiseplace-and-jamboree



Questions

Funding Sources

- **FUNDING SOURCES**

- Federal Low Income Housing Tax Credits (60%)
- City of Santa Ana
- County of Orange
- Private Financing: FHLB AHP



Preliminary Schedule*

- Financing Complete: Fall 2022
 - Start Construction: Spring 2023
 - Begin Leasing: Summer 2024
 - Grand Opening: Summer 2024
-
- *Schedule subject to change based on financing awards





Thank You!

Contact: info@wiseplace.org

Future updates:

wiseplace.org/wiseplace-and-jamboree