

“HISTORY IN THE MAKING”
 WORLD CLASS URBAN CORE MIXED USE
 MASTER PLAN WITH RESIDENTIAL
 COMPONENTS

THE ULTIMATE, TALLEST, GREENEST, MOST SUSTAINABLE
 VERTICAL SUPERSTRUCTURE OPPORTUNITY ZONE IN
 ORANGE COUNTY.

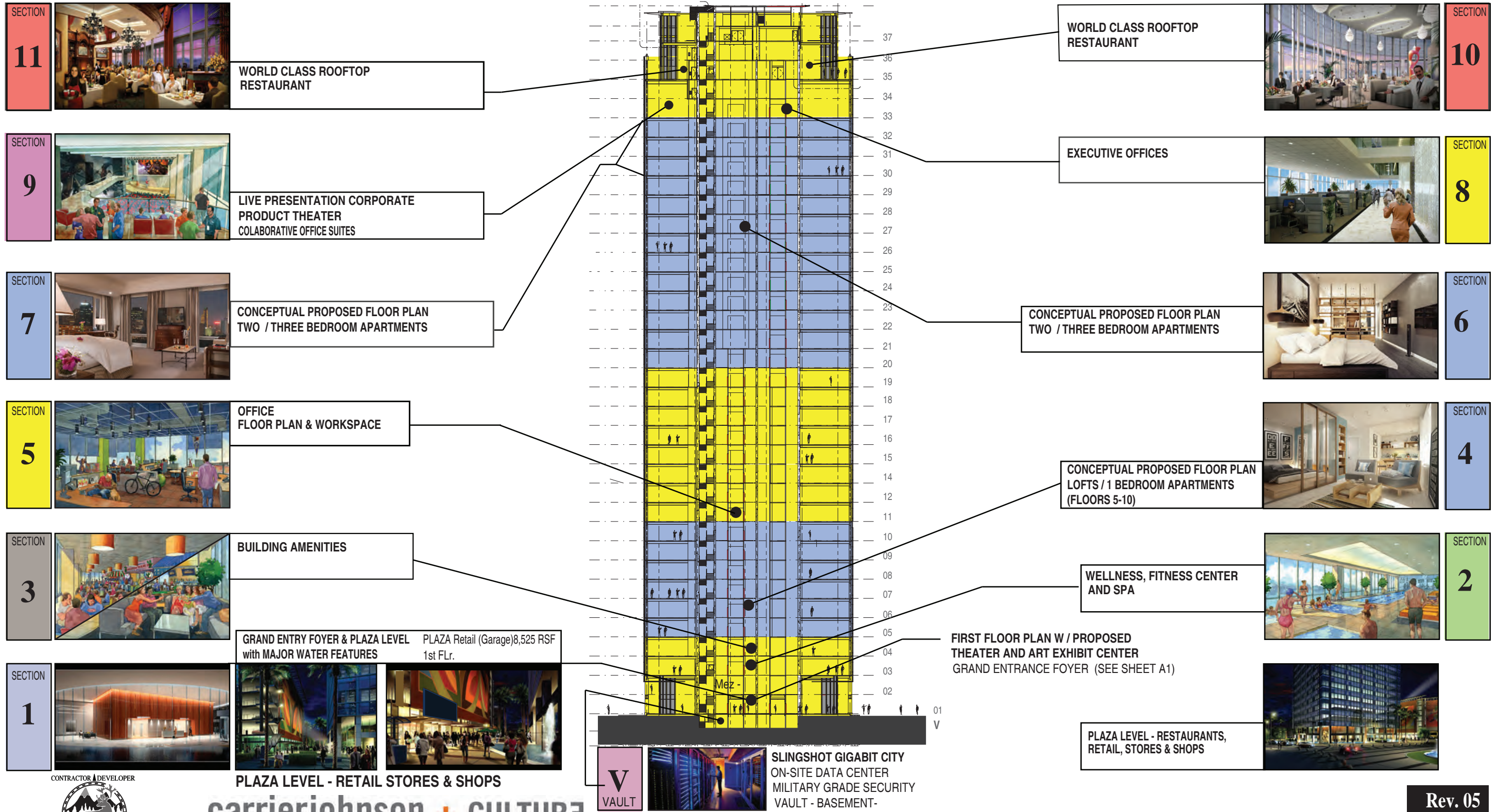
ONE BROADWAY PLAZA

AMENDMENT TO THE APPROVED ORDINANCE

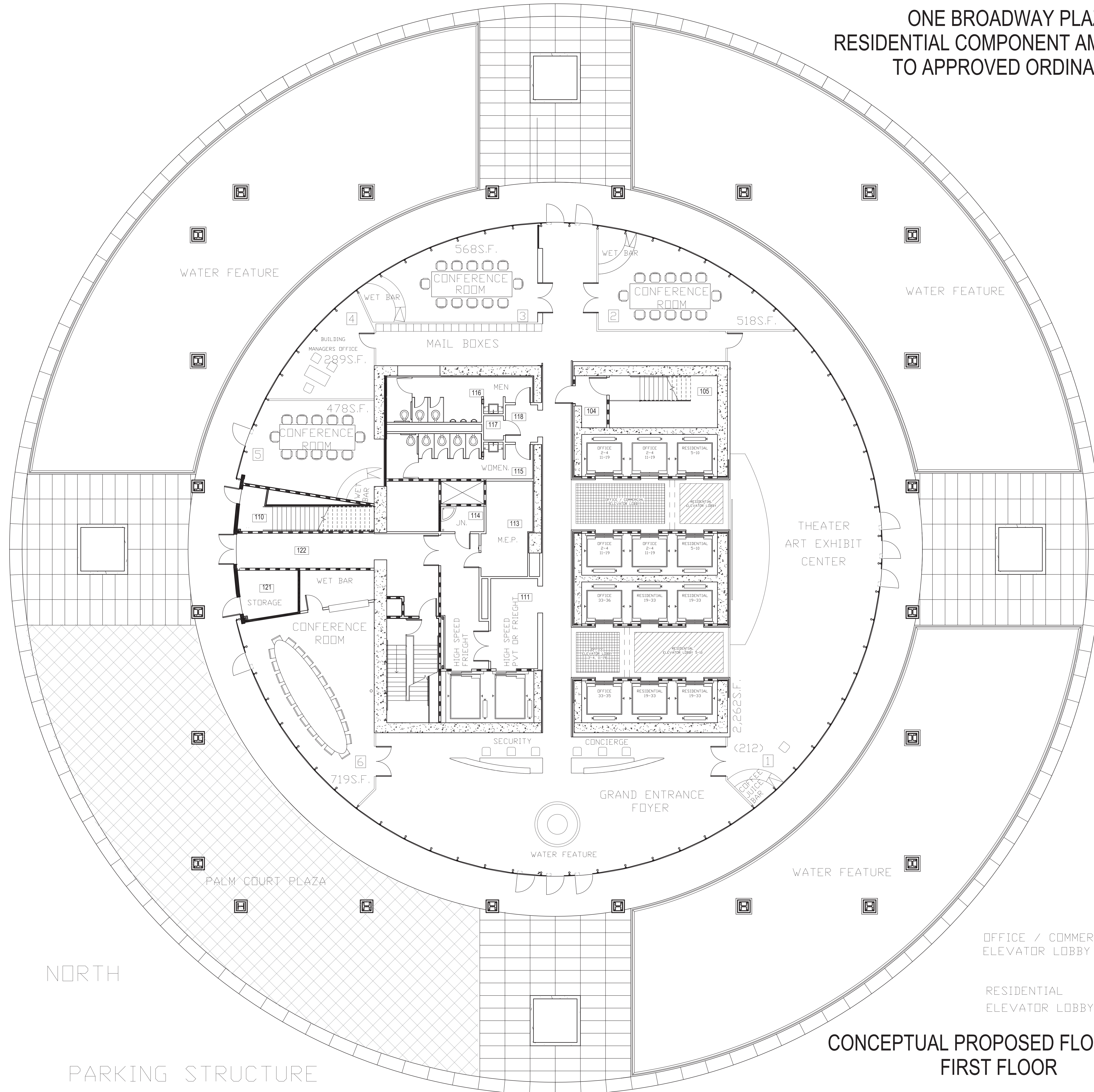
CONCEPTUAL STACKING PLAN FOR RESIDENTIAL COMPONENT

3/16/20

GENERAL NOTE:
 493 FEET TALL
 37 FLOORS



ONE BROADWAY PLAZA
RESIDENTIAL COMPONENT AMENDMENT
TO APPROVED ORDINANCE



CONCEPTUAL PROPOSED FLOOR PLAN
FIRST FLOOR

Rev. 05



CARIBOU INDUSTRIES, INC.
1103 N. BROADWAY
SANTA ANA, CA
(714)543-9484
FAX (714)543-9972

TENANT IMPROVEMENTS
-

ADDRESS
ONE BROADWAY PLAZA
1001 N. BROADWAY
SANTA ANA, CA 92701

TITLE
RESIDENTIAL COMPONENT
FIRST FLOOR LOBBY
PROPOSED FLOOR PLAN

Project File: Floorplan-colab
Date: 030120
DRWN. BY: LJI
Scale: 1/8" = 1'-0"
△ Revision
△ Revision
△ Revision
△ Revision

Sheet
A1



CARIBOU INDUSTRIES, INC.
1103 N. BROADWAY
SANTA ANA, CA
(714)543-9484
FAX (714)543-9972

ADDRESS
3RD LEVEL

ONE BROADWAY PLAZA
1001 N. BROADWAY
SANTA ANA, CA 92701

TITLE
PROPOSED FLOOR PLAN
HEALTH & FITNESS
WELLNESS CENTER

Project File: Floorplan-colob
Date: 07/01/18
DRWN. BY: LJI
Scale: 1/8" = 1'-0"
Revision
Revision
Revision
Revision

Sheet
A-3

SADDLEBACK RANCHO SANTA MARGARITA PALOMAR BEACH CITIES - SAN CLEMENTE LAGUNA BEACH

MT. SAN JACINTO PALM SPRINGS

East

South

JOHN WAYNE AIRPORT AND FASHION ISLAND

NEWPORT BEACH THE GOLD COAST

BEACHES - & CATALINA ISLAND SAN CLEMENTE ISLAND

BEACH CITIES HUNTINGTON BEACH

BEACHES - LONG BEACH SAN PEDRO PALOS VERDES

BIG BEAR MT. SAN GORGONIO

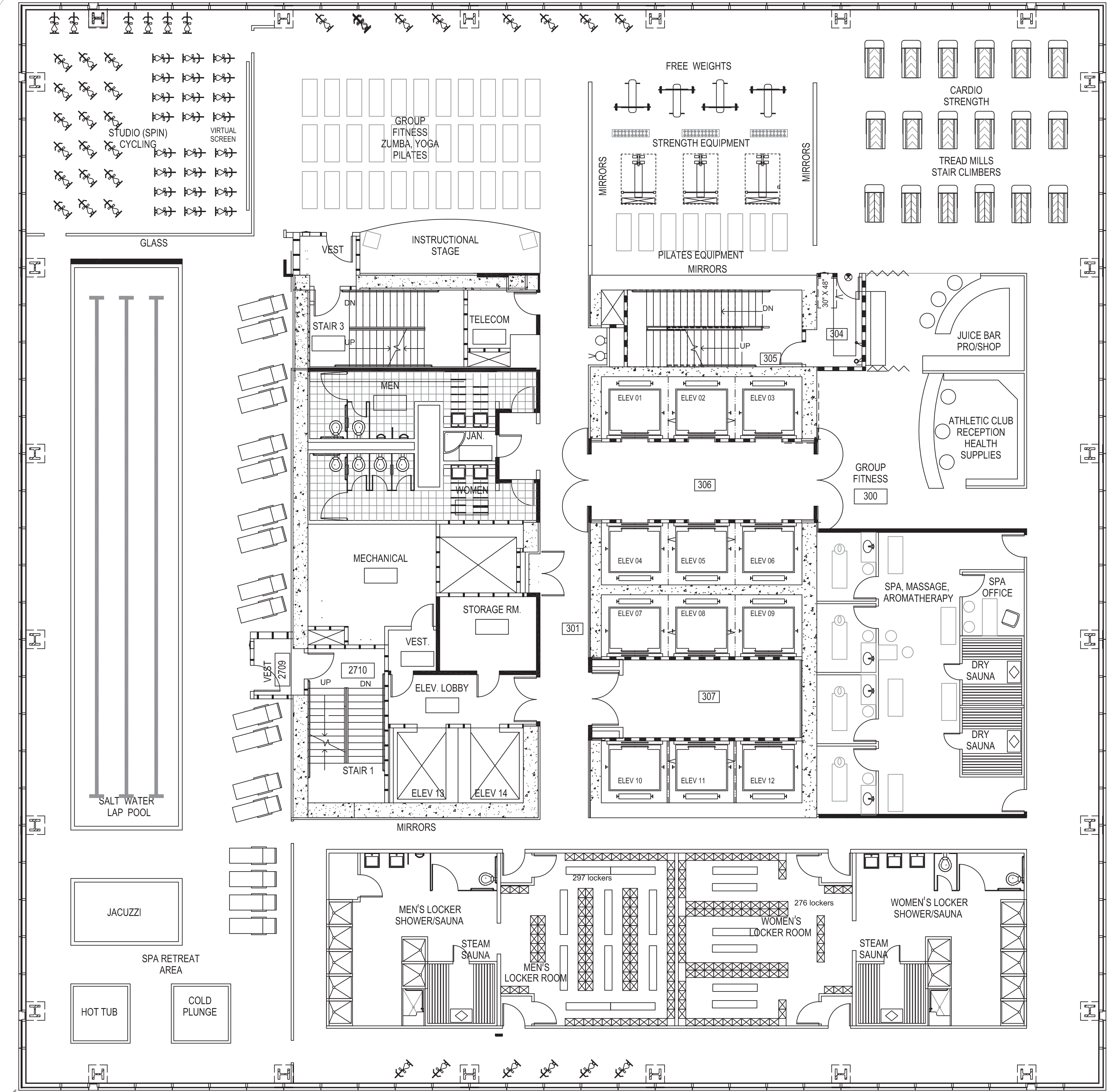
MT. BALDY

DISNEYLAND DOWNTOWN - LA

MALIBU SANTA MONICA

West

WORLD CLASS WELLNESS CENTER & SPA



CARIBOU PRESERVING THE PAST ENSURING THE FUTURE

Rev. 05



CARIBOU INDUSTRIES, INC.
 1103 N. BROADWAY
 SANTA ANA, CA
 (714)543-9484
 FAX (714)543-9972

-

ADDRESS
 3RD LEVEL

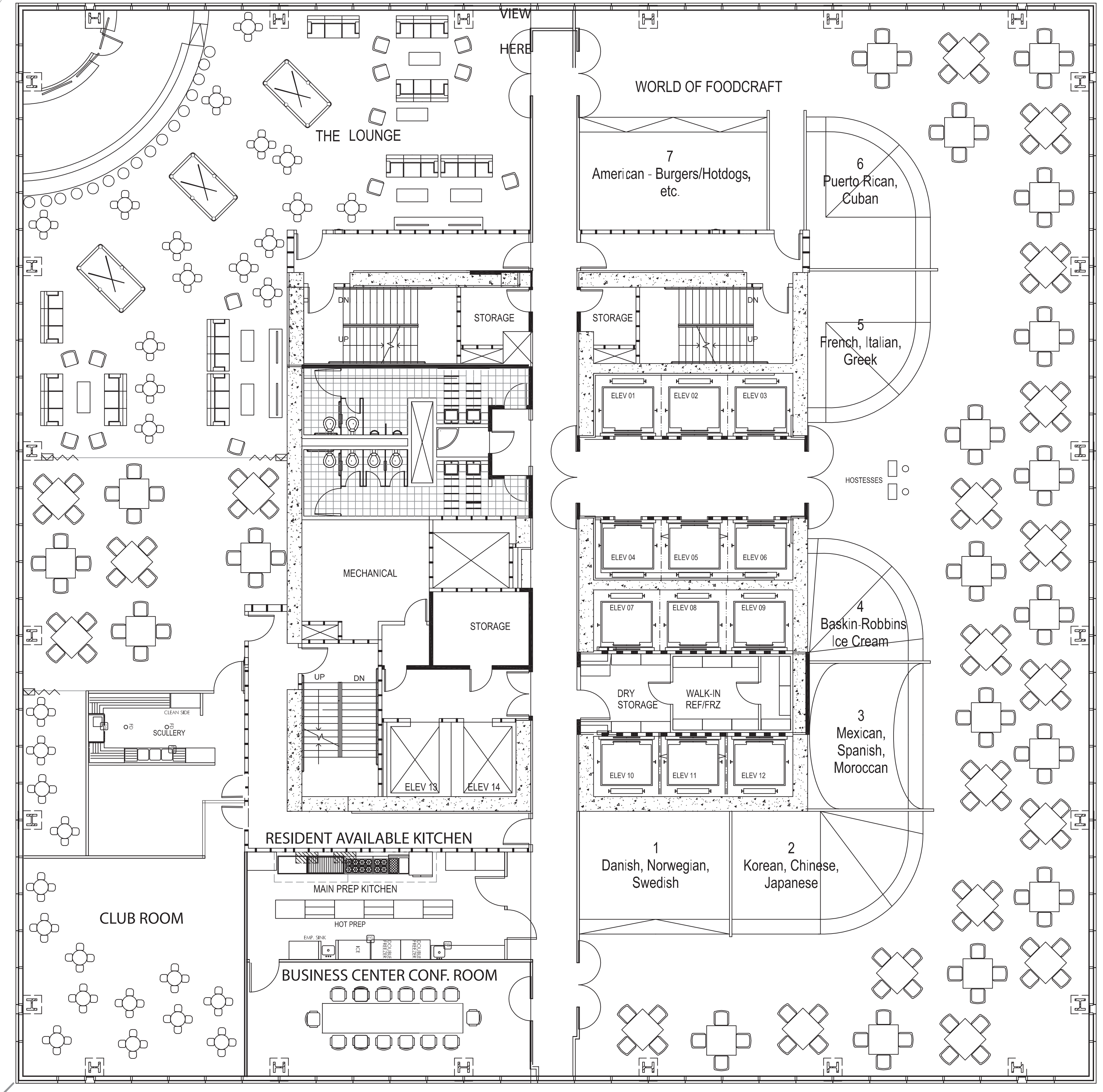
ONE BROADWAY PLAZA
 1001 N. BROADWAY
 SANTA ANA, CA 92701

TITLE
 PROPOSED FLOOR PLAN
 AMENITIES

Project File: Floorplan-colab
 Date: 07/01/18
 DRWN. BY: LJI
 Scale: 1/8" = 1'-0"
 △ Revision
 △ Revision
 △ Revision
 △ Revision

Sheet
A-4

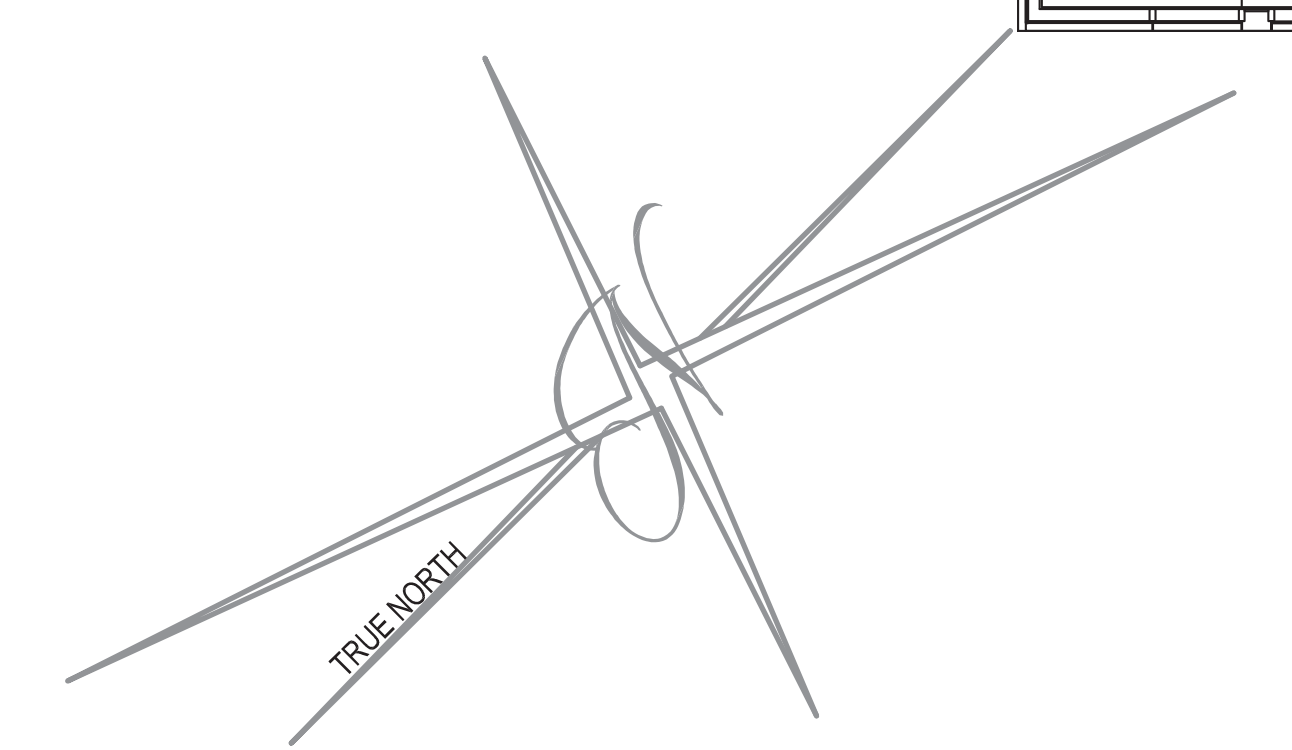
East OCEAN VIEWS *South*



OCEAN VIEWS

West

BUILDING AMENITIES



Rev. 05



CARIBOU INDUSTRIES, INC.
1103 N. BROADWAY
SANTA ANA, CA
(714)543-9484
FAX (714)543-9972

TENANT IMPROVEMENTS

ADDRESS

ONE BROADWAY PLAZA
1001 N. BROADWAY
SANTA ANA, CA 92701

TITLE

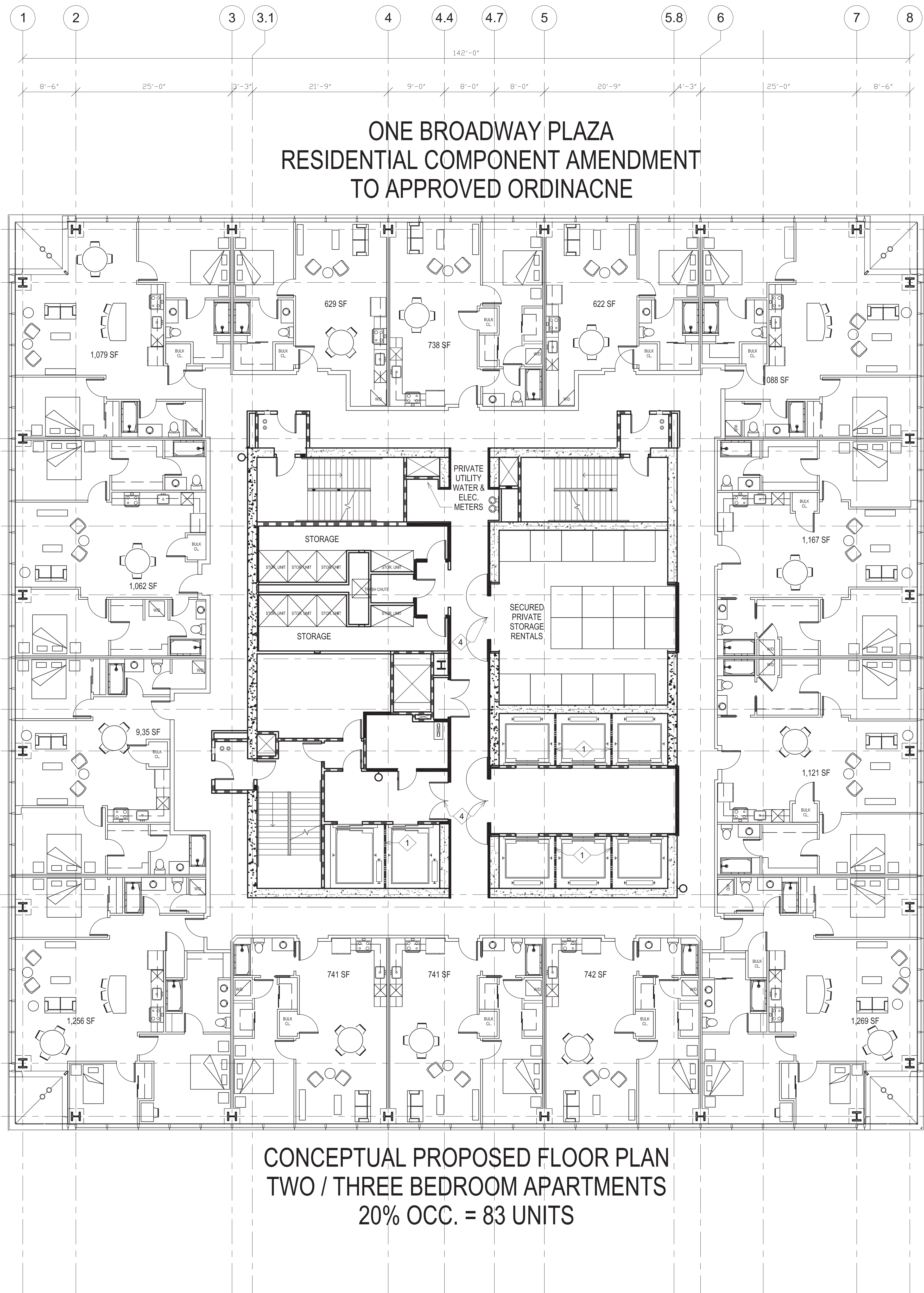
RESIDENTIAL COMPONENT
CONCEPTUAL PROPOSED
FLOOR PLAN
TWO / THREE BEDROOM APT.

Project File: Floorplan--colab
Date: 0701/18
DRWN. BY: LJI
Scale: 1/8" = 1'-0"
△ Revision
△ Revision
△ Revision
△ Revision

Sheet

A30-33

Rev. 05



ONE BROADWAY PLAZA
RESIDENTIAL COMPONENT AMENDMENT
TO APPROVED ORDINACNE

CONCEPTUAL PROPOSED FLOOR PLAN
TWO / THREE BEDROOM APARTMENTS
20% OCC. = 83 UNITS



CARIBOU INDUSTRIES, INC.
1103 N. BROADWAY
SANTA ANA, CA
(714)543-9484
FAX (714)543-9972

TENANT IMPROVEMENTS

ADDRESS

ONE BROADWAY PLAZA
1001 N. BROADWAY
SANTA ANA, CA 92701

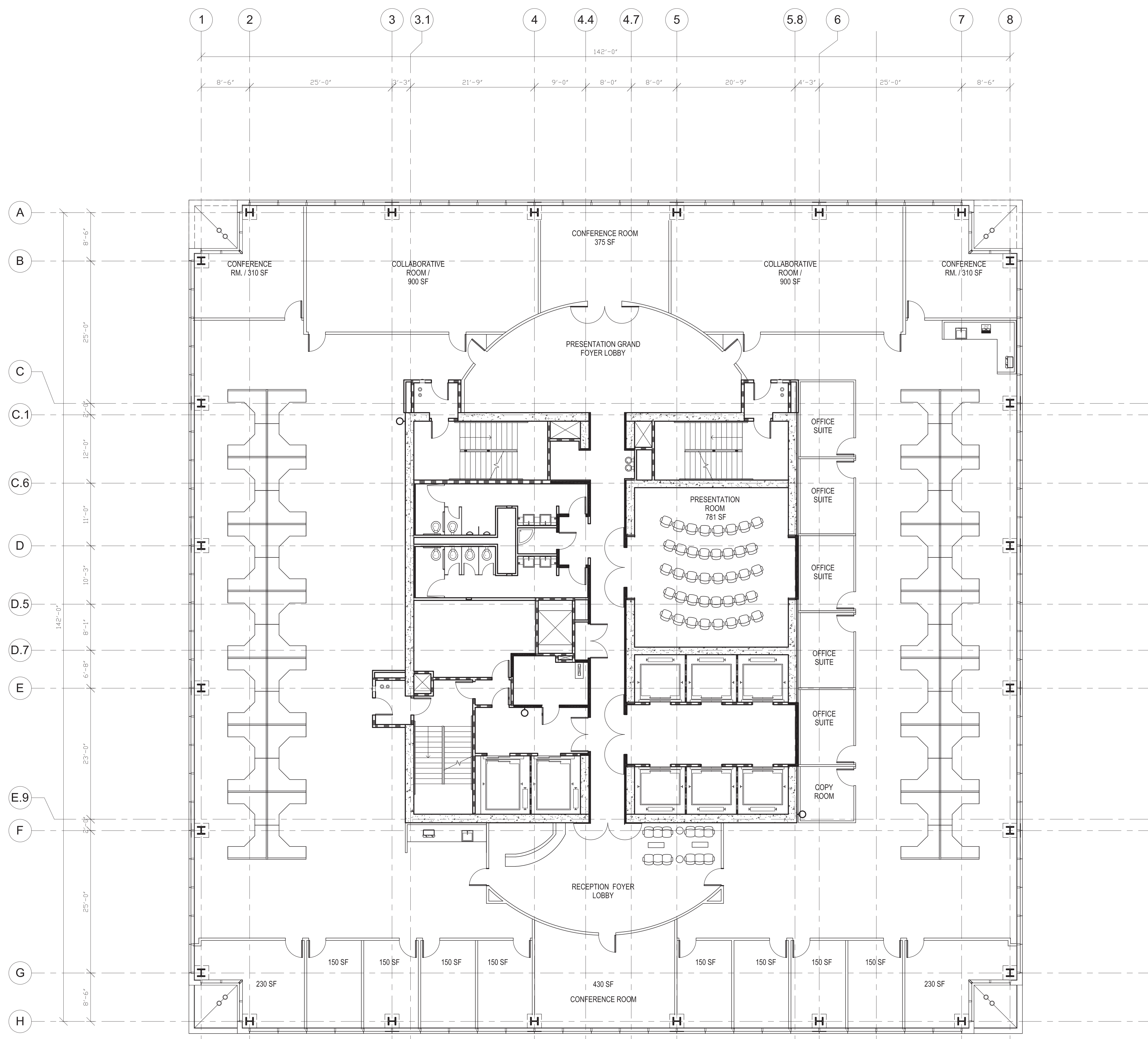
TITLE
(APPROX. 200,000 TOTAL S.F.)
CONCEPTUAL OFFICE FLOOR PLAN
PROPOSED FLOOR PLAN

Project File: Floorplan-colab
Date: 030120
DRWN. BY: LJI
Scale: 1/8" = 1'-0"
△ Revision
△ Revision
△ Revision
△ Revision

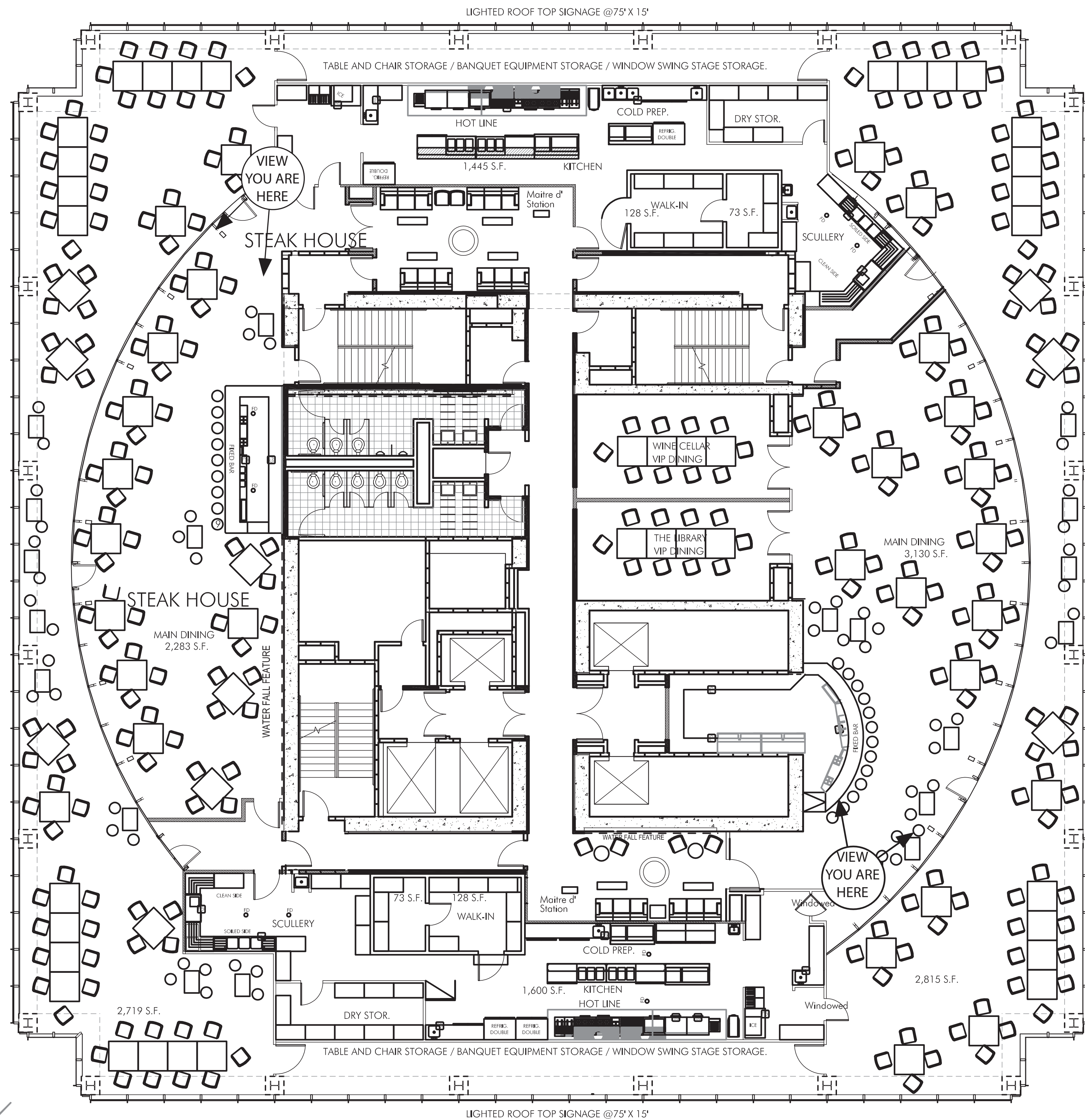
Sheet

A11-19

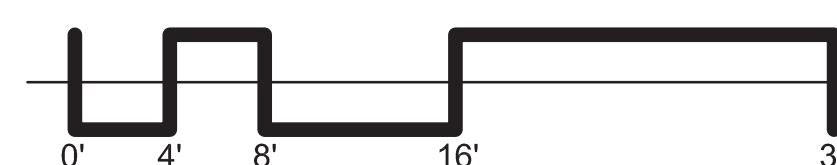
Rev. 05



CONCEPTUAL PROPOSED FLOOR PLAN
CONCEPTUAL OFFICE FLOOR PLAN
(APPROX. 200,000 TOTAL SQUARE FEET)



**TWO WORLD CLASS
 ROOFTOP RESTAURANTS**



Rev. 05

CONTRACTOR DEVELOPER



PRESERVING THE PAST ENSURING THE FUTURE

ISSUES:
 100% SCHEMATIC DESIGN SUBMITTAL

PROJECT NO:
 4788.00

SCALE:
 1/8"=1'-0"

DRAWN BY: CHECKED BY:

PLOT DATE:
 8/12

TITLE:

TOWER
 (35TH LEVEL)
 PLAN(RESTAURANT)

DRAWING NO:

A2.35