



CARIBOU INDUSTRIES, INC.
1200 N. MAIN STREET
SUITE #900
(714)543-9484
FAX (714)543-9972

TENANT IMPROVEMENTS

ADDRESS

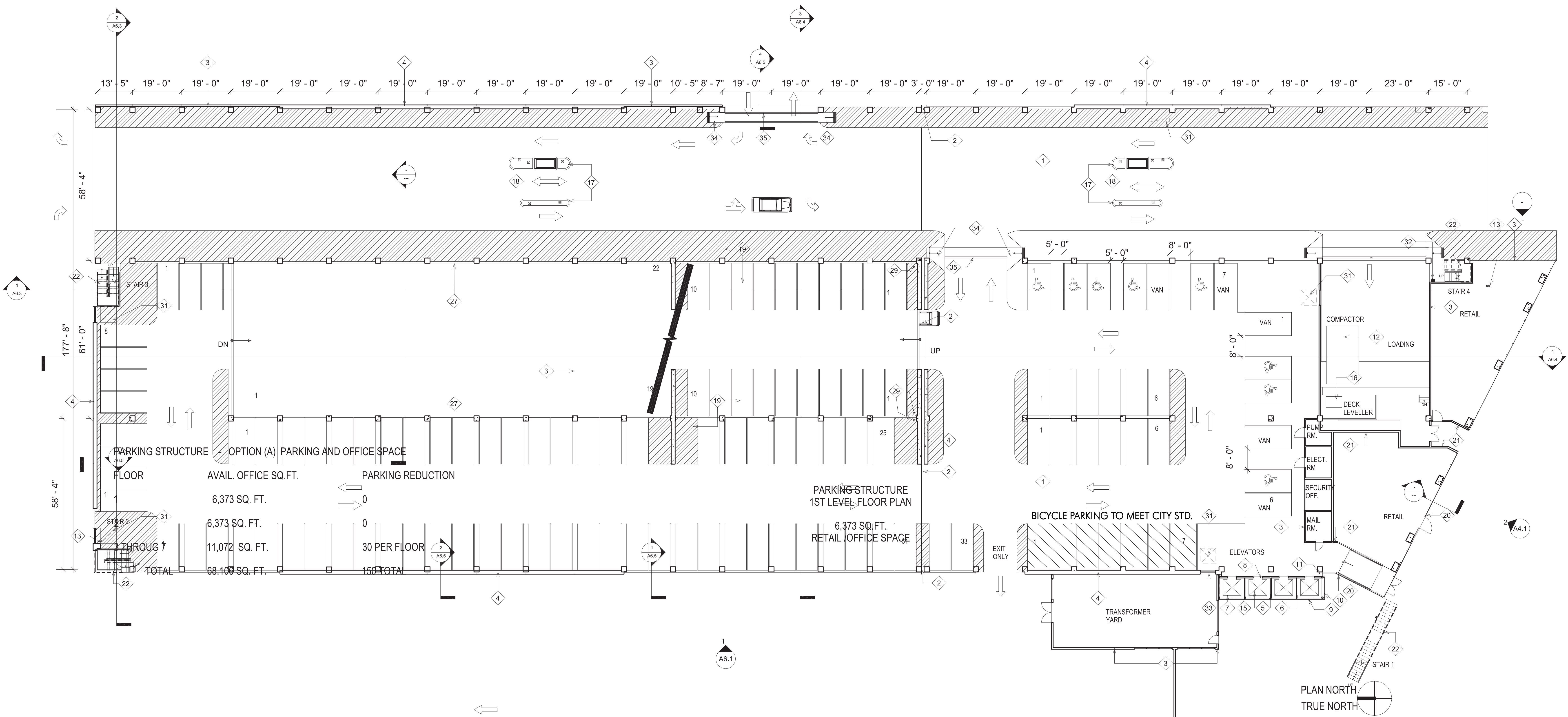
ONE BROADWAY PLAZA
1001 N. BROADWAY
SANTA ANA, CA 92701

TITLE

Project File:
Date:
DRWN. BY: LJI
Scale: 1/16- 1'-0"
▲ Revision
▲ Revision
▲ Revision

Sheet

A1



TOTAL RESERVED RESIDENTIAL
PARKING SPACES = 830 SPACES

ONE BROADWAY PLAZA
PARKING GARAGE STRUCTURE
FLOOR 1 - 159 STALL



CARIBOU INDUSTRIES, INC.
1200 N. MAIN STREET
SUITE #900
(714)543-9484
FAX (714)543-9972

TENANT IMPROVEMENTS

ADDRESS

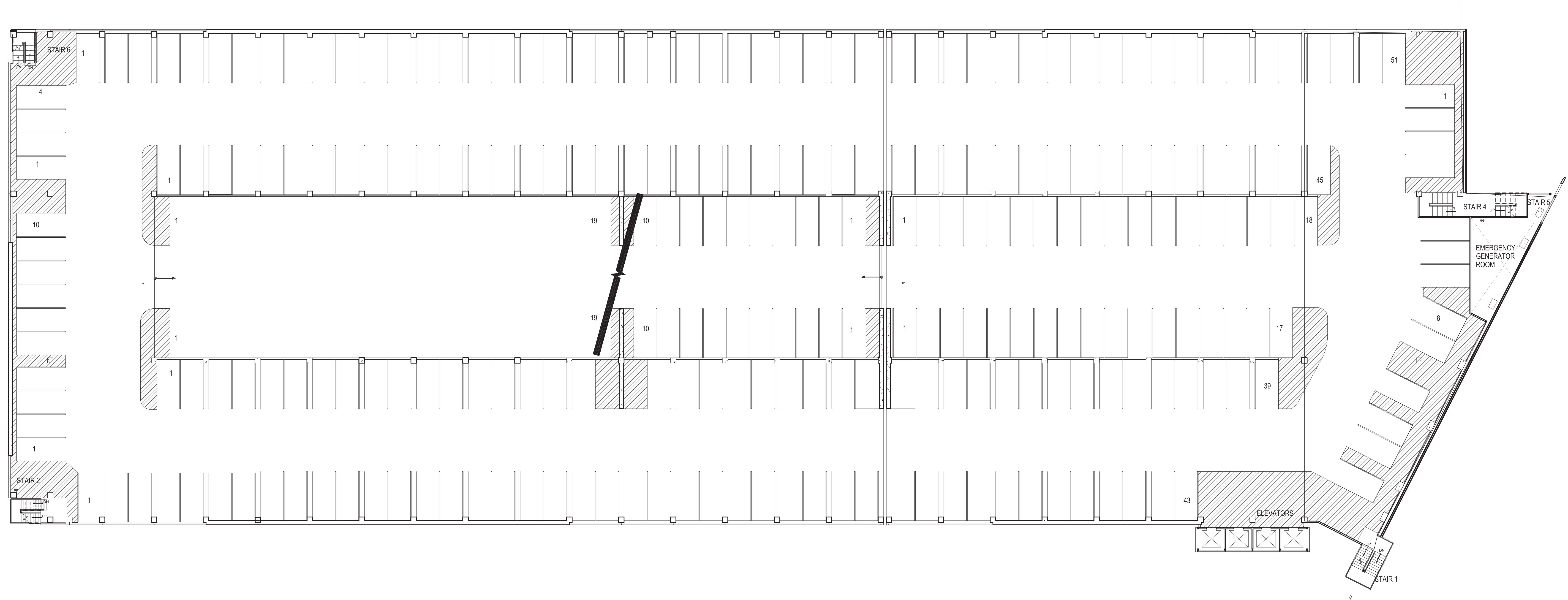
ONE BROADWAY PLAZA
1001 N. BROADWAY
SANTA ANA, CA 92701

TITLE

Project File:
Date:
DRWN. BY: LJL
Scale: 1/16" = 1'-0"
△ Revision
△ Revision
△ Revision

Sheet

A2-7



ONE BROADWAY PLAZA
PARKING GARAGE STRUCTURE
FLOORS 2-7 TYPICAL 332 STALLS



CARIBOU INDUSTRIES, INC.
1200 N. MAIN STREET
SUITE #900
(714)543-9484
FAX (714)543-9972

TENANT IMPROVEMENTS

ADDRESS

ONE BROADWAY PLAZA
1001 N. BROADWAY
SANTA ANA, CA 92701

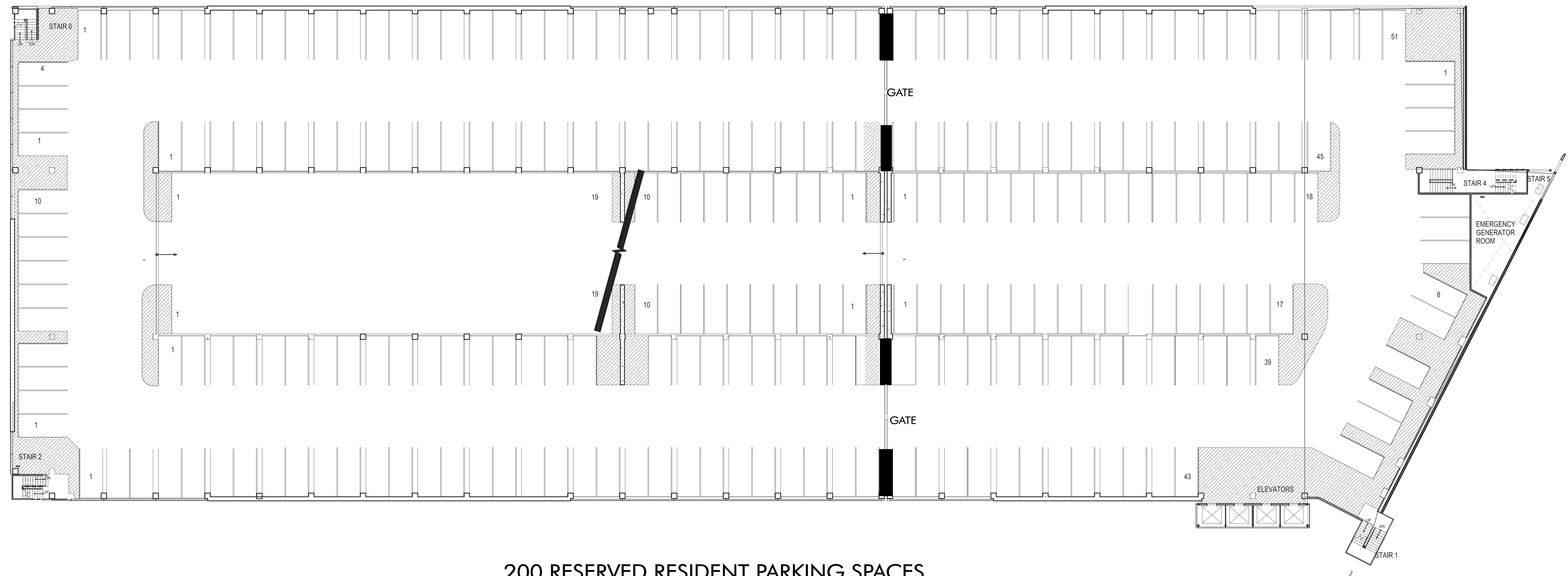
TITLE

Project File:
Date:
DRWN. BY: LJL
Scale: 1/16" = 1'-0"
△ Revision
△ Revision
△ Revision

Sheet

A6

ONE BROADWAY PLAZA
PARKING GARAGE STRUCTURE
2,450 PARKING STALLS TOTAL
800 PRIVATE / GATED SECURED
RESIDENTIAL PARKING



200 RESERVED RESIDENT PARKING SPACES
132 OFFICE OR PUBLIC PARKING SPACES

ONE BROADWAY PLAZA
PARKING GARAGE STRUCTURE
FLOOR 6



CARIBOU INDUSTRIES, INC.
1200 N. MAIN STREET
SUITE #900
(714)543-9484
FAX (714)543-9972

TENANT IMPROVEMENTS

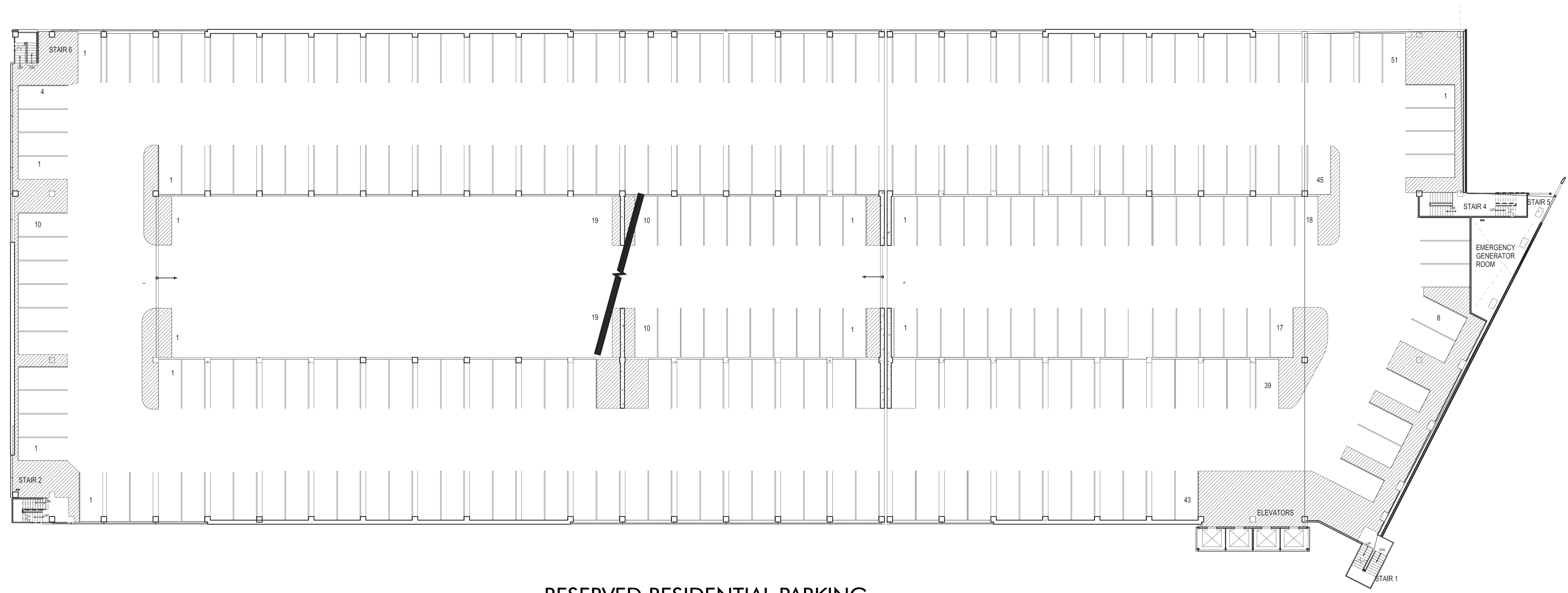
ADDRESS

**ONE BROADWAY PLAZA
1001 N. BROADWAY
SANTA ANA, CA 92701**

TITLE

Project File:
Date:
DRWN. BY: LJL
Scale: 1/16" = 1'-0"
△ Revision
△ Revision
△ Revision

Sheet
A7



**RESERVED RESIDENTIAL PARKING
332 STALLS**

**ONE BROADWAY PLAZA
PARKING GARAGE STRUCTURE
FLOOR 7**

CARIBOU 12-10-02



CARIBOU INDUSTRIES, INC.
1200 N. MAIN STREET
SUITE #900
(714)543-9484
FAX (714)543-9972

TENANT IMPROVEMENTS

ADDRESS

Lorem ipsum

ONE BROADWAY PLAZA
1001 N. BROADWAY
SANTA ANA, CA 92701

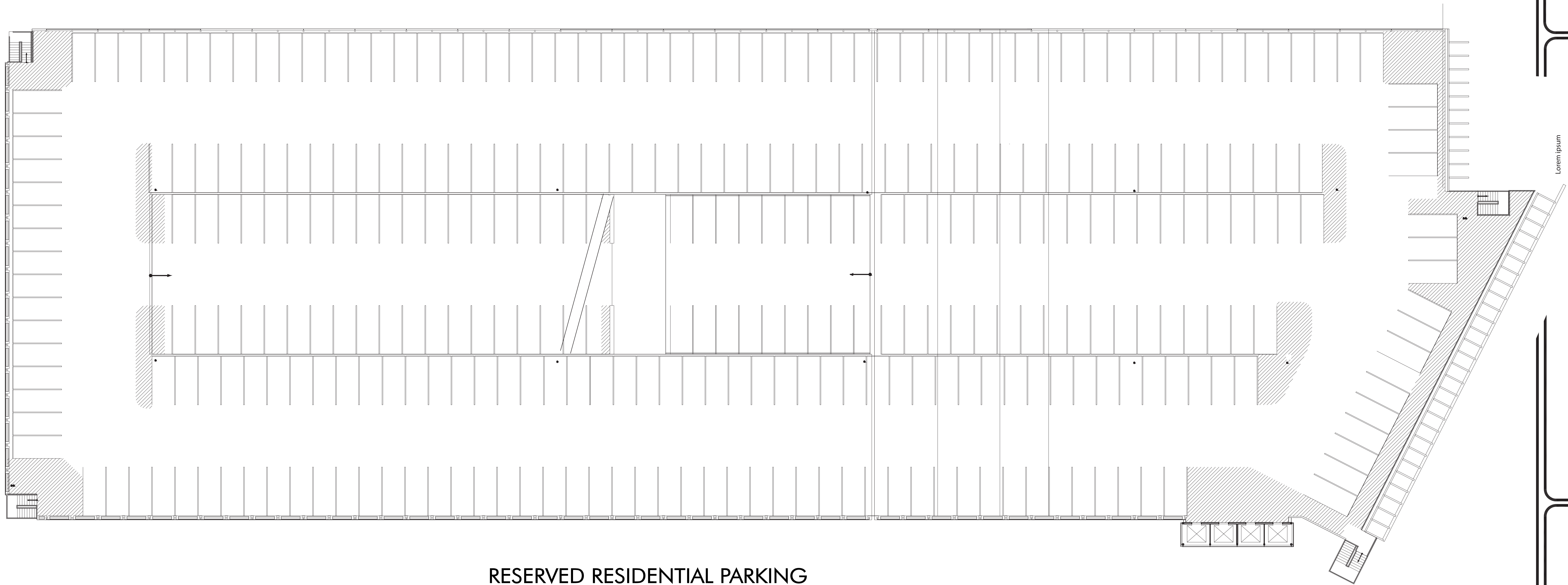
TITLE

Project File:

Date:
DRWN. BY: LJI
Scale: 1/16" = 1'-0"
△ Revision
△ Revision
△ Revision
△ Revision

Sheet

A8



RESERVED RESIDENTIAL PARKING
PARKING - 298 STALLS

ONE BROADWAY PLAZA
PARKING GARAGE STRUCTURE
FLOOR 8 (TOP FLOOR)