



TAYLOR MORRISON OF CALIFORNIA, LLC
4695 MacArthur Court
8th Floor
Newport Beach, CA 92660

April 22, 2022

Ali Pezeshkpour
Planning Division
City of Santa Ana
20 Civic Center Plaza, Ross Annex M-20 Santa Ana, CA 92701

RE: Sunshine Meeting – 2525 Main Street, Santa Ana, CA

Dear Ali –

I am providing this affidavit, under penalty of perjury, and its associate attachments to verify that Taylor Morrison of California LLC, "TM", has satisfied the requirements of the City of Santa Ana's Sunshine Ordinance.

TM submitted an entitlements package on April 5, 2022 to the City of Santa Ana for administrative site plan review for its proposed development at 2525 Main Street, Santa Ana, CA. In compliance with the Sunshine Ordinance a community meeting was held on April 20th at the First Congregational Church of Santa Ana Sanctuary located at 2555 Santiago Street, Santa Ana, CA.

Prior to the meeting TM notified the community:

- 1) Mailing notices, in both English and Spanish, were sent to all residential owners and tenants with a valid United States Postal Service address within a 1000-foot radius of the subject property;
- 2) Mailing notices, in both English and Spanish were hand delivered to front doors of residences located on the attached map in the surrounding Park Santiago residential area;
- 3) The same notice was posted at three locations at the development project site; and
- 4) Published the notice in the OC Reporter on April 10, 2022. A digital copy of the notice was provided to the City and was subsequently posted to the City's website.

Detailed meeting minutes are provided as an attachment to this affidavit. All public comment inquiries were responded to during the meeting.

Should you have any additional questions, please contact Chris Encheff at (949) 554-2837.

Sincerely,

DocuSigned by:

Chris Encheff

9045ED29ABE6463...

Chris Encheff

Vice President, Land Acquisitions

TAYLOR MORRISON OF CALIFORNIA, LLC

CC: File

Attachments:

1. Community Notice
2. OC Reporter-Copy of Publication
3. Photo of Notice on Property
4. Notification List for 1,000 radius
5. Additional Notification List for Santiago Park neighborhood
6. Meeting Minutes & Public Comments



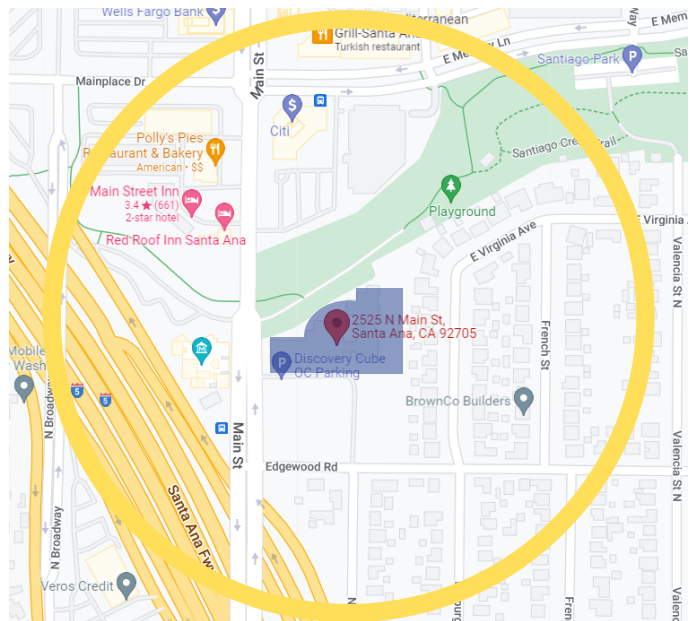
4695 MacArthur Court, 8th Floor, Newport Beach, CA 92660
949-833-3600

YOU'RE INVITED TO A COMMUNITY MEETING FOR TAYLOR MORRISON SANTA ANA

Taylor Morrison Santa Ana is a newly proposed townhome community that is to be located on Main Street adjacent to Santiago Park and just Northwest of the 5 freeway in the City of Santa Ana.

Please come and share your thoughts and ideas about this new housing community.

At the meeting we will provide general information, answer questions and solicit input on the housing proposal.



The proposed location of Taylor Morrison Santa Ana is highlighted in blue

WHEN:

Wednesday, April 20th, from 6:00 pm to 7:30 pm

WHERE:

First Congregational Church of Santa Ana, 2555 Santiago St, Santa Ana, 92706

RSVP:

tmsantaana92705@gmail.com | (714) 623-7512

If you have questions regarding this event or you require language interpretation services in languages other than English, please contact: Uriel Zamarripa, at (714) 623-7512 or tmsantaana92705@gmail.com.

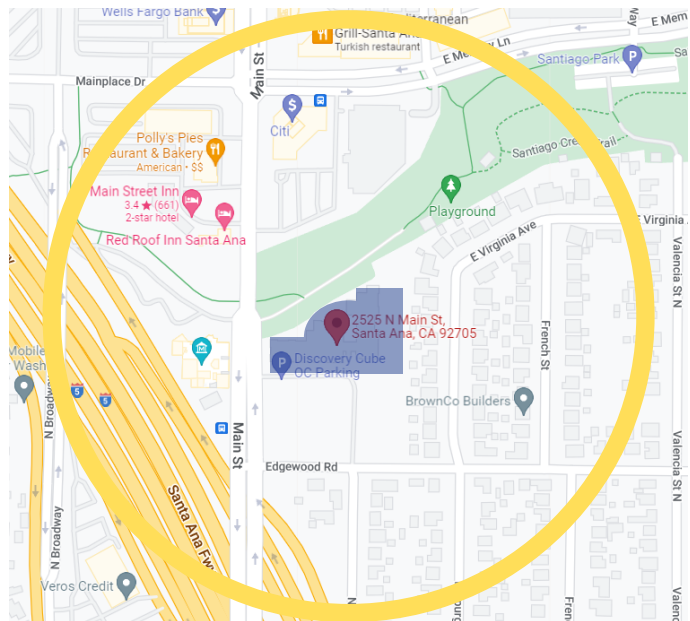


4695 MacArthur Court, 8th Floor, Newport Beach, CA 92660
949-833-3600

ESTÁS INVITADO A UNA REUNIÓN COMUNITARIA PARA TAYLOR MORRISON SANTA ANA

Taylor Morrison Santa Ana es una comunidad propuesta de casas adosadas que se ubicará en Main Street adyacente a Santiago Park y justo al noroeste de la autopista 5 en la ciudad de Santa Ana.

Por favor, venga y comparta sus pensamientos e ideas sobre esta nueva comunidad de viviendas. En la reunión, daremos información general, respondaremos a preguntas, y solicitaremos información sobre la propuesta de vivienda.



La ubicación propuesta de 2525 Main Street está resaltado en color azul.

CUANDO:

Miércoles, 20 de Abril, de 6:00 pm a 7:30 pm

DÓNDE:

Primera Iglesia Congregacional de Santa Ana, 2555 Santiago St, Santa Ana, 92706

SRC:

tmsantaana92705@gmail.com | (714) 623-7512

Si usted tiene preguntas sobre este evento, o si necesita servicios de interpretación con idiomas distintos al inglés, por favor envíe un correo electrónico a: tmsantaana92705@gmail.com o comuníquese con Uriel Zamarripa al (714) 623-7512

TAYLOR MORRISON SANTA ANA

Cordially invites you to a community information meeting for :

**Taylor Morrison Santa Ana Townhome Community
at 2525 Main Street
Santa Ana, CA 92705**

Taylor Morrison Santa Ana is a newly proposed townhome community that is to be located on Main Street adjacent to Santiago Park and just Northwest of the 5 free way in the City of Santa Ana. Please come and share your thoughts and ideas about this new housing community. At the meeting we will provide general information, answer questions and solicit input on the housing proposal.

**MEETING DATE AND TIME :
Wednesday, April 20th, 2022
6:00 pm to 7:30 pm**

**MEETING LOCATION:
First Congregational Church of Santa Ana
2555 Santiago Street, Santa Ana, CA 92706**

If you have questions regarding this event or you require language interpretation services in languages other than English, please contact: Unel Zamarripa, at (714) 623-7512 or tmsantaana92705@gmail.com.

Publish: Orange County Register April 10, 2022 11529429|

The Orange County Register

1771 S. Lewis Street
Anaheim, CA 92805
714-796-2209

5282384

CURT PRINGLE & ASSOCIATES
1801 EAST KATELLA AVE #1002
ANAHEIM, CA 92805

AFFIDAVIT OF PUBLICATION

STATE OF CALIFORNIA, }
County of Orange } SS.

I am a citizen of the United States and a resident of the County aforesaid; I am over the age of eighteen years, and not a party to or interested in the above entitled matter. I am the principal clerk of The Orange County Register, a newspaper of general circulation, published in the city of Santa Ana, County of Orange, and which newspaper has been adjudged to be a newspaper of general circulation by the Superior Court of the County of Orange, State of California, under the date of November 19, 1905, Case No. A-21046, that the notice, of which the annexed is a true printed copy, has been published in each regular and entire issue of said newspaper and not in any supplement thereof on the following dates, to wit:

04/10/2022

I certify (or declare) under the penalty of perjury under the laws of the State of California that the foregoing is true and correct:

Executed at Anaheim, Orange County, California, on
Date: April 10, 2022.



Signature

PROOF OF PUBLICATION

Legal No. **0011529429**

TAYLOR MORRISON SANTA ANA

Cordially invites you to a community information meeting for:

**Taylor Morrison Santa Ana Townhome Community
at 2525 Main Street
Santa Ana, CA 92705**

Taylor Morrison Santa Ana is a newly proposed townhome community that is to be located on Main Street adjacent to Santiago Park and just Northwest of the 5 freeway in the City of Santa Ana. Please come and share your thoughts and ideas about this new housing community. At the meeting we will provide general information, answer questions and solicit input on the housing proposal.

**MEETING DATE AND TIME:
Wednesday, April 20th, 2022
6:00 pm to 7:30 pm**

**MEETING LOCATION:
First Congregational Church of Santa Ana
2555 Santiago Street, Santa Ana, CA 92706**

If you have questions regarding this event or you require language interpretation services in languages other than English, please contact: Uriel Zamarripa, at (714) 623-7512 or tmsantaana92705@gmail.com.

Publish: Orange County Register April 10, 2022 11529429

SITE POSTINGS



taylor morrison
Housing Proposed by Title
405 MacArthur Court, 8th Floor, Newport Beach, CA 92660
949-871-8000

YOU'RE INVITED TO A COMMUNITY MEETING FOR TAYLOR MORRISON SANTA ANA

Taylor Morrison Santa Ana is a newly proposed townhome community that is to be located on Main Street adjacent to Santiago Park and just Northwest of the 5 freeway in the City of Santa Ana.



The proposed location of Taylor Morrison Santa Ana is highlighted in blue

Please come and share your thoughts and ideas about this new housing community. At the meeting we will provide general information, answer questions and solicit input on the housing proposal.

WHEN:

Wednesday, April 20th, from 6:00 pm to 7:30 pm

WHERE:

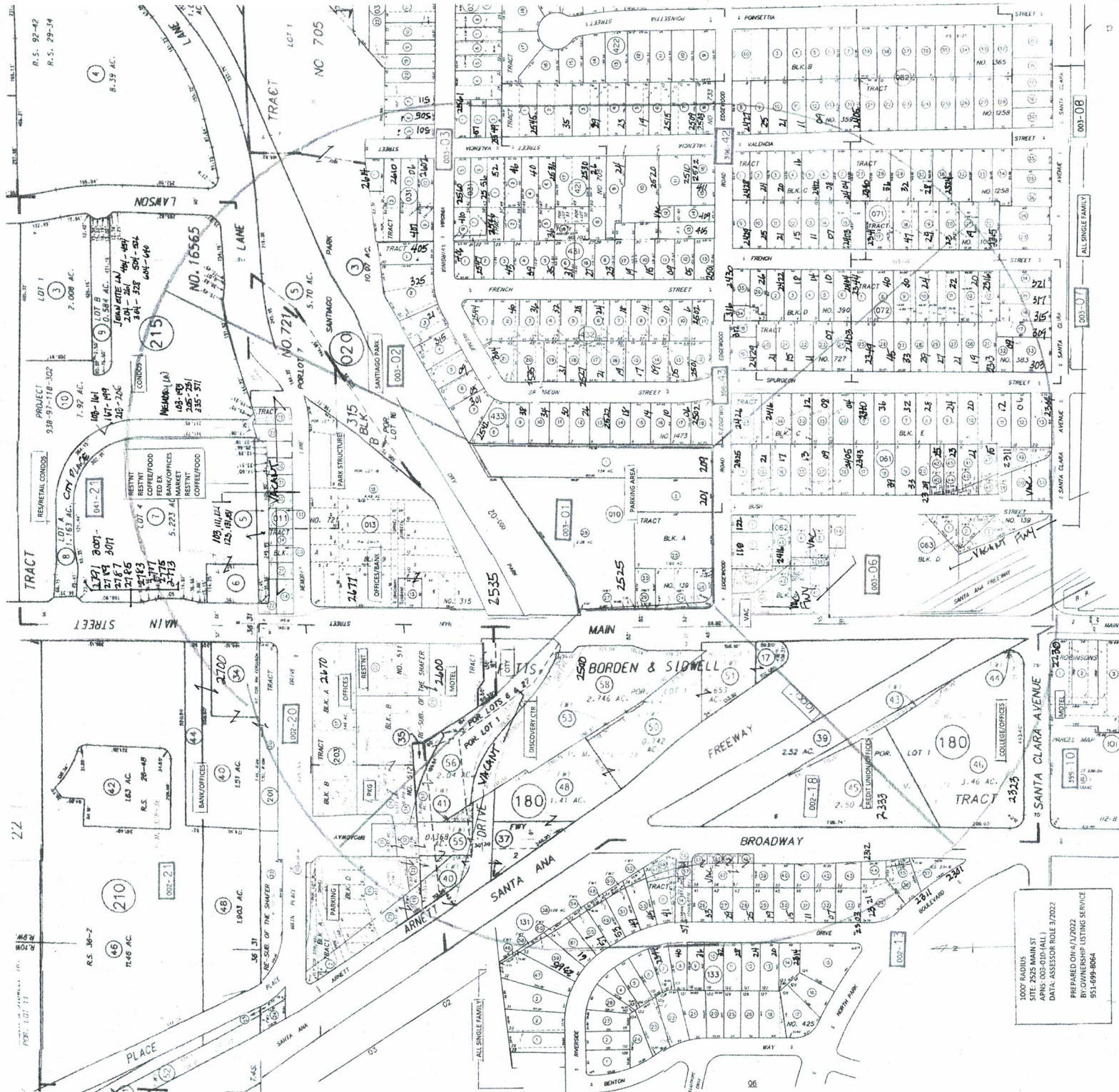
First Congregational Church of Santa Ana
2535 Santiago St, Santa Ana, 92706

RSVP:

tmsantaana02705@gmail.com | (714) 623-7312

If you have questions regarding this event or you require language interpretation services in languages other than English, please contact: Uriel Zamarripa, at (714) 623-7968 or tmsantaana02705@gmail.com.





1000 PLANTIS
 SITE: 2525 MAIN ST
 APNS: 003-010-011
 DATA: ASSESSOR ROLE 3/2022
 PREPARED ON: 4/17/2022
 BY: OWNERSHIP LISTING SERVICE
 951-699-8064

Name	Address	City	St	Zip
AC 2525 MAIN	240 NEWPORT CENTER DR STE 200	NEWPORT BEACH	CA	92660
DISCOVERY SCIENCE CENTER OF ORANGE COUNTY	2500 N MAIN ST	SANTA ANA	CA	92705
CITY OF SANTA ANA	PO BOX 1988 M-25	SANTA ANA	CA	92702
CITY OF SANTA ANA	PO BOX 1988 M-25	SANTA ANA	CA	92702
STATE OF CALIFORNIA	2501 PULLMAN ST	SANTA ANA	CA	92705
KARYN D CRIPPS	2341 N RIVERSIDE DR	SANTA ANA	CA	92706
MARTIN BARILA	2337 N RIVERSIDE DR	SANTA ANA	CA	92706
PHILIP LLOYD & CAMELA ANN WOODWARD	2333 RIVERSIDE DR	SANTA ANA	CA	92706
ANDREW HIGGINS	2329 N RIVERSIDE DR	SANTA ANA	CA	92706
JASON & ANNIE MAI BEVACQUA	2325 RIVERSIDE DR	SANTA ANA	CA	92706
STEVEN & JANICE MC KENZIE	2319 RIVERSIDE DR	SANTA ANA	CA	92706
THOMAS P PROPROFSKY	2315 N RIVERSIDE DR	SANTA ANA	CA	92706
JEFFREY ROBERT & LAUREN PIERSON	2311 N RIVERSIDE DR	SANTA ANA	CA	92706
TREVOR SMITH	2307 N RIVERSIDE DR	SANTA ANA	CA	92706
LEONARD J ATEN	19676 MORGAN CT	YORBA LINDA	CA	92886
JEANNE N HARRIS	2321 N PARK BLVD	SANTA ANA	CA	92706
JOHANNA & JOSE RIVERA	2311 N PARK BLVD	SANTA ANA	CA	92706
RAUL OCHOA MUNOZ	2301 N PARK BLVD	SANTA ANA	CA	92706
STEVEN & JANICE MC KENZIE	2214 S PARTON ST	SANTA ANA	CA	92707
THOMAS P PROPROFSKY	2315 N RIVERSIDE DR	SANTA ANA	CA	92706
JEFFREY ROBERT & LAUREN PIERSON	2311 N RIVERSIDE DR	SANTA ANA	CA	92706
TREVOR SMITH	2307 N RIVERSIDE DR	SANTA ANA	CA	92706
LEONARD J ATEN	19676 MORGAN CT	YORBA LINDA	CA	92886
TIMOTHY KENT & JANET LORRAINE AUSTIN	1018 W RIVER LN	SANTA ANA	CA	92706
RIVERA JOHANNA	2311 N PARK BLVD	SANTA ANA	CA	92706
MONICA ADINA VOINEA	2345 N RIVERSIDE DR	SANTA ANA	CA	92706
MARK L & LUISA E R VAN HORN	2349 RIVERSIDE DR	SANTA ANA	CA	92706
MONICA ADINA VOINEA	2345 N RIVERSIDE DR	SANTA ANA	CA	92706
CYNTHIA ELAINE ROE	2357 N RIVERSIDE DR	SANTA ANA	CA	92706
CITY OF SANTA ANA	20 CIVIC CENTER PLZ	SANTA ANA	CA	92701
MANUELA G HERNANDEZ	2361 RIVERSIDE DR	SANTA ANA	CA	92706
MANUELA G HERNANDEZ	2361 RIVERSIDE DR	SANTA ANA	CA	92706
JAMES C CRIPPS	2341 N RIVERSIDE DR	SANTA ANA	CA	92706
NADINE RODRIGUEZ	2325 N RIVERSIDE DR	SANTA ANA	CA	92706
ANTHONY & REBECA HORAN	3601 MOUNT RUBIDOUX DR	RIVERSIDE	CA	92501
PHILIP LLOYD WOODARD	2333 N RIVERSIDE DR	SANTA ANA	CA	92706
HARRIS JAYE FELDMAN	2344 RIVERSIDE DR	SANTA ANA	CA	92706
JASON LANE & JENNIFER EMMELINE FRANKS	221 RICHMOND DR APT B	MILLBRAE	CA	94030
HOLLY C & JAMES D THOMAS	2336 N RIVERSIDE DR	SANTA ANA	CA	92706
KENNETH J W IANT	2332 N RIVERSIDE DR	SANTA ANA	CA	92706
MARTA K BARKER	2328 N RIVERSIDE DR	SANTA ANA	CA	92706
JAMES E BENISH	2324 RIVERSIDE DR	SANTA ANA	CA	92706
GARY KENNETH BARTON	2136 N HELIOTROPE DR	SANTA ANA	CA	92706
AARON & LAURA HICKS	2314 N RIVERSIDE DR	SANTA ANA	CA	92706
SANTA ANA RR	2677 N MAIN ST #470	SANTA ANA	CA	92705
BROADWAY INVESTMENT GROUP	2333 N BROADWAY STE 400	SANTA ANA	CA	92706
RANCHO SANTIAGO COMMUNITYCOLLEGE	1530 W 15TH ST	SANTA ANA	CA	92706
CITY OF SANTA ANA	20 CIVIC CENTER PLZ	SANTA ANA	CA	92701
CITY OF SANTA ANA	20 CIVIC CENTER PLZ	SANTA ANA	CA	92701
DISCOVERY SCIENCE CENTER OF ORANGE COUNTY	2500 N MAIN ST	SANTA ANA	CA	92705
2700 N MAIN	19782 MACARTHUR BLVD STE 100	IRVINE	CA	92612
HIMY FAMILY LIMITED	4045 HORTON ST	EMERYVILLE	CA	94608
E D D INVESTMENT	173 E FREEDOM AVE	ANAHEIM	CA	92801
SANTA ANA RR	2677 N MAIN ST #470	SANTA ANA	CA	92705
SANTA ANA RR	2677 N MAIN ST #470	SANTA ANA	CA	92705
CITY OF SANTA ANA	20 CIVIC CENTER PLZ	SANTA ANA	CA	92701
CITY OF SANTA ANA	20 CIVIC CENTER PLZ	SANTA ANA	CA	92701
DOUNEL REVOCABLE AMIR	1110 S SHENANDOAH ST NO.8	LOS ANGELES	CA	90035
2700 N MAIN	19782 MACARTHUR BLVD STE 100	IRVINE	CA	92612
2700 N MAIN	19782 MACARTHUR BLVD STE 100	IRVINE	CA	92612
2700 N MAIN	19782 MACARTHUR BLVD STE 100	IRVINE	CA	92612
AC 2525 MAIN	240 NEWPORT CENTER DR STE 200	NEWPORT BEACH	CA	92660
DISCOVERY SCIENCE CENTER OF ORANGE COUNTY	2500 N MAIN ST	SANTA ANA	CA	92705
CITY OF SANTA ANA	PO BOX 1988 M-25	SANTA ANA	CA	92702
CITY OF SANTA ANA	PO BOX 1988 M-25	SANTA ANA	CA	92702
STATE OF CALIFORNIA	2501 PULLMAN ST	SANTA ANA	CA	92705
STATE OF CALIFORNIA	2501 PULLMAN ST	SANTA ANA	CA	92705
MAIN STREET OWNER OC	18881 VON KARMAN AVE STE 400	IRVINE	CA	92612
CITY OF SANTA ANA	PO BOX 1988 M-17	SANTA ANA	CA	92702
CITY OF SANTA ANA	PO BOX 1988 M-17	SANTA ANA	CA	92702

FRANK W SWANN	2614 N VALENCIA ST	SANTA ANA	CA	92706
THOMAS CARTNEY	2612 N VALENCIA ST	SANTA ANA	CA	92706
LMS SEPARATE PROPERTY TRUST	2606 VALENCIA ST	SANTA ANA	CA	92706
JOHN & FRANCINE VASQUEZ	2560 VALENCIA ST	SANTA ANA	CA	92706
STEPHEN GORGONE	2556 N VALENCIA ST	SANTA ANA	CA	92706
MARILYN A CORLEY	410 E VIRGINIA AVE	SANTA ANA	CA	92706
PETER & SUSAN GRIFFIN	2552 N VALENCIA ST	SANTA ANA	CA	92706
MIKE K COTR LEE	407 VIRGINIA AVE	SANTA ANA	CA	92706
JOHN FRANCIS GAVIN	2602 VALENCIA	SANTA ANA	CA	92706
CANDICE D & GABRIELLE COLETTE VANCE	501 E VIRGINIA AVE	SANTA ANA	CA	92706
LAURA L ATKINSON	505 E VIRGINIA AVE	SANTA ANA	CA	92706
EUGEN CHARLES IV COTR ANDRES	511 VIRGINIA AVE	SANTA ANA	CA	92706
LUCKY & HEATHER VAN FLEET TOCHIKUBO	2561 VALENCIA ST	SANTA ANA	CA	92706
CHARLOTTE OMOHUNDRO	2557 VALENCIA ST	SANTA ANA	CA	92706
THERESA CAVANAUGH	PO BOX 312	ORANGE	CA	92856
GLORIA LISA PADILLA	2340 N SPURGEON ST	SANTA ANA	CA	92706
JACK C FRANCIS	2336 SPURGEON ST	SANTA ANA	CA	92706
TEDRO R SCOTT	5401 ARGOSY AVE	HUNTINGTON BEACH	CA	92649
JOSEPH & BERTHA A LANDAVERDE	2328 N SPURGEON ST	SANTA ANA	CA	92706
ESTEBAN SALAS	2324 N SPURGEON ST	SANTA ANA	CA	92706
RUSSELL N PARKER	2320 N SPURGEON ST	SANTA ANA	CA	92706
MILES E ERLICH	2312 N SPURGEON ST	SANTA ANA	CA	92706
ARMANDO & WANDA RAMIREZ	2306 N SPURGEON ST	SANTA ANA	CA	92706
LAVON A & TRUDY A BARTON	2304 N SPURGEON ST	SANTA ANA	CA	92706
VERONICA M GUEVARA	2425 N BUSH ST	SANTA ANA	CA	92706
ROBERT FRANK VALENTA	2421 N BUSH ST	SANTA ANA	CA	92706
DESIREE CHANTE & DANNY FERNANDEZ	2417 N BUSH ST	SANTA ANA	CA	92706
ROGER DAVID ALLEN	3895 SLOOP DR	LAKE HAVASU CITY	AZ	86406
IAN JOHANSEN	10431 NEWPORT BLVD	SANTA ANA	CA	92705
LORI J OLIVER	2333 N BUSH ST	SANTA ANA	CA	92706
RICHARD G MARTINEZ	2329 N BUSH ST	SANTA ANA	CA	92706
EYTHEL M STEVENSON	2426 N SPURGEON ST	SANTA ANA	CA	92706
ALBERT & CHELSEA BEZJIAN	2412 N SPURGEON ST	SANTA ANA	CA	92706
DANIEL FERNANDEZ	2413 N BUSH ST	SANTA ANA	CA	92706
EVANGELINE GONZALEZ	2408 N SPURGEON ST	SANTA ANA	CA	92706
HECTOR M & NORA HERNANDEZ	2405 N BUSH ST	SANTA ANA	CA	92706
PETRONILO L MARQUEZ	2409 N BUSH ST	SANTA ANA	CA	92706
CYNTHIA L RAUSCH	2404 N SPURGEON	SANTA ANA	CA	92706
ANGELA SOLIS	2416 N SPURGEON ST	SANTA ANA	CA	92706
RUDOLF M NAVARRO	2321 N BUSH ST	SANTA ANA	CA	92706
LORENA MUNIZ	5279 E LOMITA AVE	ORANGE	CA	92869
DANIEL T SMITH	2323 N BUSH ST	SANTA ANA	CA	92706
LEONARD JOHN ATEN	19676 MORGAN CT	YORBA LINDA	CA	92886
HUNG MANH LE	17810 SAN CANDELO ST	FOUNTAIN VALLEY	CA	92708
STATE OF CALIFORNIA	2501 PULLMAN ST	SANTA ANA	CA	92705
ENRIQUE BERNAL	122 EDGEWOOD RD	SANTA ANA	CA	92706
JASON JACOB VENABLE	118 EDGEWOOD RD	SANTA ANA	CA	92706
STATE OF CALIFORNIA	2501 PULLMAN ST	SANTA ANA	CA	92705
RAUL R DURAN	2416 N BUSH ST	SANTA ANA	CA	92706
ESTHER CASTANEDA	980 W 17TH ST STE A	SANTA ANA	CA	92706
STATE OF CALIFORNIA	2501 PULLMAN ST	SANTA ANA	CA	92705
JERRY CHARLES HOUCHENS	2428 VALENCIA ST	SANTA ANA	CA	92706
MICHAEL JON BISHOP	2424 N VALENCIA ST	SANTA ANA	CA	92706
STEVE PAUL & NADINE LOUISE WAREHAM	2420 VALENCIA AVE	SANTA ANA	CA	92706
ANGELINA LOPEZ	2416 VALENICA ST	SANTA ANA	CA	92706
JERRY M & ROOY CHRISTINE VAN ROOY	2412 N VALENCIA ST	SANTA ANA	CA	92706
KAREN M COSTELLO	2408 VALENCIA ST	SANTA ANA	CA	92706
ROBERT P LONG	26082 CALLE COBBLESTONE	SAN JUAN CAPISTRANO	CA	92675
RORY KIRK	2429 N FRENCH ST	SANTA ANA	CA	92706
JOHN W EDDY	2425 FRENCH ST	SANTA ANA	CA	92706
MILLICENT JEAN LOW ARANYI	2421 FRENCH ST	SANTA ANA	CA	92706
ALVEN P PEDERSEN	2415 N FRENCH ST	SANTA ANA	CA	92706
MARTIN F & REBECCA A SCHWARZ	2411 N FRENCH ST	SANTA ANA	CA	92706
SUSAN J HYATT	2407 N FRENCH ST	SANTA ANA	CA	92706
TIMOTHY EDWARD MCDONALD	2403 N FRENCH ST	SANTA ANA	CA	92706
STEVEN AMES	2341 N FRENCH ST	SANTA ANA	CA	92706
COREY HENN	2337 N FRENCH ST	SANTA ANA	CA	92706
HENRY MEDINA	2329 N FRENCH ST	SANTA ANA	CA	92706
LAWRENCE H & SOPHILIA WIIST	2323 N FRENCH ST	SANTA ANA	CA	92706
JILL LYNN LOMHEIM	2319 N FRENCH ST	SANTA ANA	CA	92706
RANDALL T & JENNIFER E STERETT	2315 N FRENCH ST	SANTA ANA	CA	92706

AMANDA ROSE ARZATE	2340 VALENCIA ST	SANTA ANA	CA	92706
ANN L MITCHELL	2336 N VALENCIA ST	SANTA ANA	CA	92706
DAVID B SMITH	11152 ADDISON RD	SANTA ANA	CA	92705
KURT J VOLMER	2328 N VALENCIA	SANTA ANA	CA	92706
DREW A DOYER	2324 VALENCIA AVE	SANTA ANA	CA	92706
RAYMOND SANDERS	2422 FRENCH ST	SANTA ANA	CA	92706
KATHRYN S SANFORD	2418 N FRENCH ST	SANTA ANA	CA	92706
DAMON E & MARY HIEN-HOA VU IAMMARINO	2414 N FRENCH ST	SANTA ANA	CA	92760
RAFAEL FONSECA	2410 N FRENCH ST	SANTA ANA	CA	92706
DAVID ALDERSON	2404 N FRENCH ST	SANTA ANA	CA	92706
ERIC LEE VISMANTAS	2344 FRENCH ST	SANTA ANA	CA	92706
ARCHIE S & ERIN M JOHNSON	2340 FRENCH ST	SANTA ANA	CA	92706
DOUGLAS RANSOM & CHRISTINE JEANETTE MACLEITH	2330 N FRENCH ST	SANTA ANA	CA	92706
VOLKER SCHWARZ	2324 FRENCH ST	SANTA ANA	CA	92706
SHARON A CARTER	2322 FRENCH ST	SANTA ANA	CA	92706
JOHN B SCOTT	835 BUTTE ST	CLAREMONT	CA	91711
JENNIFER LOUISE HILL	315 E SANTA CLARA AVE	SANTA ANA	CA	92706
BLAIR OCALLAGHAN	321 E SANTA CLARA AVE	SANTA ANA	CA	92706
ALAN D MEYER	317 E SANTA CLARA AVE	SANTA ANA	CA	92706
JENNIFER LOUISE REES-HILL	315 E SANTA CLARA AVE	SANTA ANA	CA	92706
GREGORY SKINNER	309 E SANTA CLARA AVE	SANTA ANA	CA	92706
ALEX G RODRIGUEZ	312 EDGEWOOD RD	SANTA ANA	CA	92706
GABINO BARTHOLOMEW AGUILAR	2429 N SPURGEON ST	SANTA ANA	CA	92706
MELANIE K TITTERUD	2421 N SPURGEON ST	SANTA ANA	CA	92706
ADALIGZA MEDINA	2415 N SPURGEON ST	SANTA ANA	CA	92706
DONAL CRIBB	2411 N SPURGEON ST	SANTA ANA	CA	92706
VALERIE M KEMPHEFNER	2407 N SPURGEON ST	SANTA ANA	CA	92706
EFRAIN & MARIA SANCHEZ	2403 N SPURGEON ST	SANTA ANA	CA	92706
DAVID LOUIS POCKETT	2349 N SPURGEON ST	SANTA ANA	CA	92706
DORMING FAMILY LTD	6541 HOMAN CT	CHINO	CA	91710
ROBERT A SAVALA	2333 N SPURGEON	SANTA ANA	CA	92706
MARY ANN TINKHAM	2329 N SPURGEON ST	SANTA ANA	CA	92706
JERROLD CANTOR	2621 S BRISTOL ST STE 305	SANTA ANA	CA	92704
MC MAHAN C ALEXANDER	2521 OAKMONT ST	SANTA ANA	CA	92706
ARTURO PEDROZA	2309 N SPURGEON ST	SANTA ANA	CA	92706
IVETTE M ROBINSON	303 E SANTA CLARA AVE	SANTA ANA	CA	92706
MARK HAY	316 EDGEWOOD RD	SANTA ANA	CA	92706
SHARON ANNETTE EDGE COTR COX	2430 FRENCH ST	SANTA ANA	CA	92706
FRANK DAVID FREYTAG	2426 N FRENCH ST	SANTA ANA	CA	92706
MICHAEL BOYER	2321 N SPURGEON ST	SANTA MA	CA	92706
LIZEHTE GARCIA	2319 N SPURGEON ST	SANTA ANA	CA	92706
GARY ALAN & ANA MARIA POWERS	2427 VALENCIA ST	SANTA ANA	CA	92706
KATHERINE CANADA	2425 VALENCIA ST	SANTA ANA	CA	92706
VIRGINIA L MATTHEWS	2421 N VALENCIA ST	SANTA ANA	CA	92706
HAO TIAN ZHU	2417 N VALENCIA AVE	SANTA ANA	CA	92706
CHRISTOPHER P & ANGELA R BARR	2411 N VALENCIA	SANTA ANA	CA	92706
CATHY M MOREHEAD	2409 VALENCIA ST	SANTA ANA	CA	92706
DIEGO M VELASCO	2405 VALENCIA AVE	SANTA ANA	CA	92706
NATIONWIDE THEATRES WEST FLAGLER	120 N ROBERTSON BLVD FL 3RD	LOS ANGELES	CA	90048
CITY PLACE MAINTENANCE	555 12TH ST SUITE #215	OAKLAND	CA	94607
GRIFFIN PETER	2552 VALENCIA ST	SANTA ANA	CA	92706
GRIFFIN PETER	2552 VALENCIA ST	SANTA ANA	CA	92706
MAGDALENA REYNA	2546 VALENCIA ST	SANTA ANA	CA	92706
PETER J WARREN	2540 N VALENCIA ST	SANTA ANA	CA	92706
DALE A HELVIG	2536 VALENCIA ST	SANTA ANA	CA	92706
DALE A HELVIG	2536 VALENCIA ST	SANTA ANA	CA	92706
SCOTT GRADY	10041 STARBOARD CIR	HUNTINGTON BEACH	CA	92646
DONALD E BOBO	2520 VALENCIA ST	SANTA ANA	CA	92706
DONALD E BOBO	2520 N VALENCIA	SANTA ANA	CA	92706
MARILYN J SCHNABEL	1025 E BALL RD	ANAHEIM	CA	92805
MARILYN J SCHNABEL	1025 E BALL RD	ANAHEIM	CA	92805
JOHN MANDERFELD	475 EDGEWOOD AVE	MILL VALLEY	CA	94941
KATHERINE ANN BOWERS	409 EDGEWOOD RD	SANTA ANA	CA	92706
CORNELIUS N WARD	3119 CALLE VIENTO	CARLSBAD	CA	92009
JOYCE M KELLER	2712 E HILLSIDE AVE	ORANGE	CA	92867
FRANK R LOPEZ	2530 VALENCIA ST	SANTA ANA	CA	92706
SUSAN M BURROUGHS	2545 VALENCIA ST	SANTA ANA	CA	92706
BRYANT EATON	2535 VALENCIA	SANTA ANA	CA	92706
ZETULIO JIMENEZ	2529 N VALENCIA	SANTA ANA	CA	92706
CAROL A BUCK	2523 VALENCIA AVE	SANTA ANA	CA	92706
SANDRA J WAITE	2519 N VALENCIA ST	SANTA ANA	CA	92706

STEVEN L & LENETTE J WARDINSKI	2515 N VALENCIA ST	SANTA ANA	CA	92706
BARRY R BOWYER	2509 N VALENCIA ST	SANTA ANA	CA	92706
FERMIN LEAL	2503 VALENCIA ST	SANTA ANA	CA	92706
LINDA R BURKE	406 E VIRGINIA AVE	SANTA ANA	CA	92706
MARK REIDER & ELIZABETH ANN DEERING	2547 N FRENCH ST	SANTA ANA	CA	92706
SUSAN E GABRYCH	3208 CORTE TAMARINDO	CARLSBAD	CA	92009
STREET HOUSE HART	12386 ZIG ZAG WAY	TUSTIN	CA	92780
DAVID JASON & DIANA MARIA LINDSAY	2535 N FRENCH ST	SANTA ANA	CA	92706
STREET HOUSE HART	12386 ZIG ZAG WAY	TUSTIN	CA	92780
CURTIS L BRYANT	2523 N FRENCH ST	SANTA ANA	CA	92706
DAVID MICHAEL & JULIE PERLIN LEE	PO BOX 2374	AVALON	CA	90704
GEORGE W BRAZIL	2509 N FRENCH ST	SANTA ANA	CA	92706
PAUL L MESSERALL	2505 N FRENCH	SANTA ANA	CA	92706
LAWRENCE ROBERT & KAY FRANCES WASHBURN	2501 N FRENCH ST	SANTA ANA	CA	92706
CARLOS J LOPEZ	2527 FRENCH ST	SANTA ANA	CA	92706
DOUGLAS KIEL	2519 FRENCH ST	SANTA ANA	CA	92706
JEFFREY & MARTHA FLORES MARTINEZ	2544 FRENCH ST	SANTA ANA	CA	92706
WAYNE ROBERT KIEFER	2540 FRENCH ST	SANTA ANA	CA	92706
ALEXANDER M & JULIE G JENNINGS	2536 NORTH FRENCH ST	SANTA ANA	CA	92706
JAMES W COLEMAN	2532 FRENCH ST	SANTA ANA	CA	92706
ZELA T KEUYLIAN	11803 WINDHILL WY	SANTA ANA	CA	92705
SONIA S MEZA-LEON	2524 FRENCH ST	SANTA ANA	CA	92706
CARLOS ORTIZ	2518 N FRENCH ST	SANTA ANA	CA	92706
CONNELL GERALD F & MARY E O	2514 N FRENCH ST	SANTA ANA	CA	92706
STREET HOUSE HART	12386 ZIG ZAG WAY	TUSTIN	CA	92780
OLIVER A ARCEO	2506 FRENCH ST	SANTA ANA	CA	92706
RUBEN SHAWN FLORES	2502 N FRENCH ST	SANTA ANA	CA	92706
GARY J FOLSOM	2501 N SPURGEON ST	SANTA ANA	CA	92706
ROCKLAND KENT & LISA J CALIGIURI	2505 N SPURGEON ST	SANTA ANA	CA	92706
TIMOTHY & KATHRYN MUELLER	2509 N SPURGEON ST	SANTA ANA	CA	92706
GREGORY & ALISON HANSCOM OSBORNE	1224 NOTTINGHAM RD	NEWPORT BEACH	CA	92660
ELIZABETH ANN DALTON	2519 N SPURGEON ST	SANTA ANA	CA	92706
EDWIN BABAKHANI	2521 N SPURGEON ST	SANTA ANA	CA	92706
DREW W & LANA L LEONHARDT	2527 N SPURGEON ST	SANTA ANA	CA	92706
MICHAEL J GREER	2531 N SPURGEON ST	SANTA ANA	CA	92706
CLAUDE C FOUCAULT	2535 N SPURGEON ST	SANTA ANA	CA	92706
GERALD PITTS & ISABEL VICTORIA BALL	13271 MALENA DR	SANTA ANA	CA	92705
JOSE J & MARY L MADUENA	405 E VIRGINIA AVE	SANTA ANA	CA	92706
BRADLEY M KNOERNSCHILD	325 VIRGINIA AVE	SANTA ANA	CA	92706
HORACE EUGENE & OLGA ALLEN	321 E VIRGINIA AVE	SANTA ANA	CA	92706
LARRY D JOHNSON	630 THE CITY DR S	ORANGE	CA	92868
JAMES P SPOTO	7 ORION	IRVINE	CA	92603
PEDRO & JOSEPHINE CORTEZ GUILLEN	305 E VIRGINIA AVE	SANTA ANA	CA	92706
JON P HARTMANN	301 VIRGINIA AVE	SANTA ANA	CA	92706
SAMUEL SANCHEZ	2542 N SPURGEON ST	SANTA ANA	CA	92706
RAUL SERRANO ARRIOLA	2538 N SPURGEON ST	SANTA ANA	CA	92706
JUSTIN PIERCE CHAPMAN	2534 N SPURGEON ST	SANTA ANA	CA	92706
THOMAS RICONDO	2530 N SPURGEON ST	SANTA ANA	CA	92706
JORDAN I PURRINGTON	2526 N SPURGEON ST	SANTA ANA	CA	92706
ROBERT J & ESTHER GALLARDO	2522 N SPURGEON ST	SANTA ANA	CA	92706
SERAFIN TANEGA	2518 N SPURGEON ST	SANTA ANA	CA	92706
DAVE ZAVALA	2514 N SPURGEON ST	SANTA ANA	CA	92706
JAMES L ISBELL	2510 N SPURGEON	SANTA ANA	CA	92706
LORETTA M BULT	2506 N SPURGEON	SANTA ANA	CA	92706
MARIO C TOVAR	2502 N SPURGEON ST	SANTA ANA	CA	92706
JAYSHRI T PATEL	2222 N MAIN ST	SANTA ANA	CA	92706
LLC BISS	205 E MEMORY LN	SANTA ANA	CA	92705
ROBERT P KELLEY	207 MEMORY LN	SANTA ANA	CA	92705
PASHA A MIRHADI	209 E MEMORY LN	SANTA ANA	CA	92705
CHRISTOPHER GOFFREDO	211 E MEMORY LN UNIT 117	SANTA ANA	CA	92705
ROBERT H LEUNG	213 MEMORY LN	SANTA ANA	CA	92705
CHRISTOPHER K EVANS	215 E MEMORY LN	SANTA ANA	CA	92705
PAUL PHUONG TRAN	217 MEMORY LN	SANTA ANA	CA	92705
PAMELA M HAMILTON	1215 E WEST HWY UNIT 1016	SILVER SPRINGS	MD	20910
JOSEPH JOHN KLEIN	1558 E HASTINGS WAY	PLACENTIA	CA	92870
TAKEYUKI & ATSUKO GOSHIMA	223 MEMORY LN	SANTA ANA	CA	92705
DANIEL KETCHUM	225 E MEMORY LN	SANTA ANA	CA	92705
CAROL LYNN BJORNSTAD	227 E MEMORY LN	SANTA ANA	CA	92705
JEANNETTE BOHAN	22 BURNING TREE RD	NEWPORT BEACH	CA	92660
MARTIN UBALDO SAPETTO	20162 E CHAPMAN AVE	ORANGE	CA	92869
CINDY HOI SHAN CHEUNG	199 E CITY PLACE DR	SANTA ANA	CA	92705

GEORGE NGUYEN	197 E CITY PLACE DR	SANTA ANA	CA	92705
LINDA T TA	195 E CITY PLACE DR	SANTA ANA	CA	92705
FARSHID KASHANCHI	PO BOX 50301	IRVINE	CA	92619
ABRAHAM PARK	191 E CITY PLACE DR	SANTA ANA	CA	92705
IAN E HEDGE	189 E CITY PLACE DR	SANTA ANA	CA	92705
TEANG SY	187 CITY PL	SANTA ANA	CA	92705
JENNY HUYNH	9200 BOLSA AVE #225	WESTMINSTER	CA	92683
LSB INVESTMENTS	183 CITY PLACE DR	SANTA ANA	CA	92705
JAMES C BECHLER	181 E CITY PLACE DR	SANTA ANA	CA	92705
THOMAS K YEON	179 E CITY PLACE DR	SANTA ANA	CA	92705
CHRISTOPHER J WHITESIDE	177 E CITY PLACE DR	SANTA ANA	CA	92705
CACO LLC	507 MAGNOLIA ST	DENVER	CO	80220
SANTIAGO DAVID RODRIGUEZ	936 SILVERCREEK RD	CORONA	CA	92882
GLOBAL MBL	14 MONARACH BAY PLAZA UNIT 183	DANA POINT	CA	92629
EDUARDO KIM	169 E CITY PLACE DR	SANTA ANA	CA	92705
EDUARDO KIM	169 E CITY PLACE DR	SANTA ANA	CA	92705
AMY L STARK	213 E CITY PLACE DR	SANTA ANA	CA	92705
FERNANDO M & PATRICIA PADILLA	211 E CITY PLACE DR	SANTA ANA	CA	92705
CHRISTINE BULAORO	209 E CITY PL DR	SANTA ANA	CA	92705
MICHELE B DOMICO	60 VICTORIA	NEWPORT BEACH	CA	92660
FERNANDO M & PATRICIA PADILLA	205 CITY PLACE DR	SANTA ANA	CA	92705
EDUARDO KIM	161 E CITY PLACE DR	SANTA ANA	CA	92705
BECHLER LLC	159 CITY PLACE DR	SANTA ANA	CA	92705
MARK JON YESSIAN	157 E CITY PLACE DR	SANTA ANA	CA	92075
SUSANNA T CHU	155 CITY PLACE DR	SANTA ANA	CA	92705
TOM D LE	1904 CALIFORNIA ST	HUNTINGTON BEACH	CA	92648
KELLY G MULLARNEY	151 CITY PLACE DR	SANTA ANA	CA	92705
CHRISTINE A & ROOY JERRY M VAN ROOY	2412 N VALENCIA ST	SANTA ANA	CA	92706
DAVID P KO	147 E CITY PL	SANTA ANA	CA	92705
QUOC TUAN MINH LUONG	22342 FOXHALL DR	CORONA	CA	92883
DAVID C WAVRO	143 E CITY PLACE DR	SANTA ANA	CA	92705
LISA MONIZ-BOHNHOFF	11015 AVONBURY AVE	WHITTIER	CA	90603
QUAN NGUYEN	139 CITY PLACE DR	SANTA ANA	CA	92705
ALI ASHABI MINOO GHOTBZADEH	137 CITY PL DR	SANTA ANA	CA	92705
ERIC HAENCHEN	2 ZOCALA	SAN CLEMENTE	CA	92673
KEN & TERRY LENG CHENG	133 E CITY PLACE DR	SANTA ANA	CA	92705
LILY XIAO-LI HOU	216 VIA LORCA	NEWPORT BEACH	CA	92663
TYRONE RODRIGUEZ	2200 NW 22ND AVE	CAMAS	WA	98607
LEILA D & LINDSEY ZAGWOLSKY	127 E CITY PL DR	SANTA ANA	CA	92705
HOAN H MA	611 W 17TH ST	SANTA ANA	CA	92706
TERRY T CARTER	7332 DOUGLAS CIR	LA PALMA	CA	90623
EASTCITY PL ONETWENTYONE	9952 BRILEY WAY	VILLA PARK	CA	92861
FAISAL & FAREEHA F KHAN	12862 BROWNING	SANTA ANA	CA	92705
KUULOCATIONS LLC	117 E CITY PLACE DR	SANTA ANA	CA	92705
JOSEPH VIET TRAN	115 E CITY PL DR	SANTA ANA	CA	92705
CHRISTINA BELMONTE	113 E CITY PLACE DR	SANTA ANA	CA	92705
ALEX NACKOUL	18451 SERRANO AVE	VILLA PARK	CA	92861
STEVEN ARTHUR LOPUSHINSKY	7642 E CEDAR CREEK WAY	ORANGE	CA	92869
DOUGLAS D ASUNCION	107 E CITY PL DR	SANTA ANA	CA	92705
CINDY A PLISKA	105 E CITY PLACE DR	SANTA ANA	CA	92705
SCOTT MICHAELIS	52 OXFORD	IRVINE	CA	92612
SUNG J KIM	8821 E CRESTVIEW LN	ANAHEIM HILLS	CA	92808
JONATHAN PHAM	3015 N MAIN ST	SANTA ANA	CA	92705
DANA N HARVEY	3013 N MAIN ST	SANTA ANA	CA	92705
DANA N HARVEY	3011 N MAIN ST	SANTA ANA	CA	92705
STEVEN KHA	3009 N MAIN ST	SANTA ANA	CA	92705
JONG H & DAVY C PARK	133 BRIDLE PATH	IRVINE	CA	92602
GEORGE Y LIN	1331 OAK VIEW AVE	SAN MARINO	CA	91108
VICTOR CHEUNG	256 JEANETTE LN	SANTA ANA	CA	92705
BRIAN LINH PHAM	254 E JEANETTE LN	SANTA ANA	CA	92705
JOSEPH & MICHELLE LOUISE ORLEANS INFANTE	252 E JEANETTE LN	SANTA ANA	CA	92705
MONIQUE CHERRY	250 E JEANETTE LN	SANTA ANA	CA	92705
KRISTINA BORJA	248 JEANETTE LN	SANTA ANA	CA	92705
SANTIAGO DIAZ	246 JEANETTE LN	SANTA ANA	CA	92705
MARIBEL & JORGE CUEVA	244 E JEANETTE LN	SANTA ANA	CA	92705
HANA SHEREE HALL	238 E JEANETTE LN	SANTA ANA	CA	92705
KELVIN VU	236 E JEANETTE LN	SANTA ANA	CA	92705
NICHOLAS VILLALOVOS	234 JEANETTE LN	SANTA ANA	CA	92705
MARCELA AYALA	235 E JEANETTE LN UNIT 4	SANTA ANA	CA	92705
CARL GRAF	230 E JEANETTE LN	SANTA ANA	CA	92705
KATHERINE HUANG	228 E JEANETTE LN	SANTA ANA	CA	92705

MICHELLE TSAI	417 S ASSOCIATED RD UNIT 316	BREA	CA	92821
RAVIN M RUPANI	114 LANZON	IRVINE	CA	92602
DERRICK L CHAN-SEW	218 JEANETTE LN	SANTA ANA	CA	92705
MARIA RENEE TRUJILLO	216 JEANETTE LN	SANTA ANA	CA	92705
SHUCHEN KUO	214 E JEANETTE LN	SANTA ANA	CA	92703
EJY LLC	30 N GOULD ST STE 5407	SHERIDAN	WY	82801
RUBEN & DOROTHY CZERNY	210 JEANETTE LN	SANTA ANA	CA	92705
SHEILA S YEI	108 BISHOP LNDG	IRVINE	CA	92620
JASON & SOYOUNG WILLIAMS	206 JEANETTE LN	SANTA ANA	CA	92705
BRADY J & ANDREA L HUNT	204 JEANETTE LN	SANTA ANA	CA	92705
VLADAN BELJIC	235 E JEANETTE LN	SANTA ANA	CA	92705
LOAN NGUYEN	233 E JEANETTE LN	SANTA ANA	CA	92705
DIMETROS DAMMENA	231 JEANETTE LN	SANTA ANA	CA	92705
ERIC FRAZEE	229 E JEANETTE LN	SANTA ANA	CA	92705
BRANDON DALE HOWARD	227 E JEANETTE LN	SANTA ANA	CA	92705
ASHLEY D MORRIS	225 E JEANETTE LN	SANTA ANA	CA	92705
JASON QUEEN	223 E JEANETTE LN	SANTA ANA	CA	92705
MICHAEL FRANCIS SCAGLIONE	221 E JEANETTE LN	SANTA ANA	CA	92705
JUNKO TOMINAGA	241 E JEANETTE LN	SANTA ANA	CA	92705
ROBERT CRUZ	243 E JEANETTE LN	SANTA ANA	CA	92705
CHO YUN KAO	245 JEANETTE LN	SANTA ANA	CA	92705
SUNDAY G PINEDA	247 JEANETTE LN	SANTA ANA	CA	92705
JANE N LUM	6191 CERULEAN AVE	GARDEN GROVE	CA	92845
SARAH YUKIMI WATARI	251 E JEANETTE LN UNIT 38	SANTA ANA	CA	92705
KEITH M WILLER	253 E JEANETTE LN	SANTA ANA	CA	92705
MATTHEW W & QUOC K LAI	5142 OCASO AVE	BUENA PARK	CA	90621
KEVIN DONAGHEY	257 JEANETTE LN	SANTA ANA	CA	92705
CHRISTOPHER DAVID MCCONKEY	259 E JEANETTE LN	SANTA ANA	CA	92705
MARGARET KANISHOCK	261 JEANETTE LN	SANTA ANA	CA	92705
SHINICHIRO WATANABE	304 E JEANETTE LN	SANTA ANA	CA	92705
DAVID ROBERT & ALEJANDRA LOPEZ	306 E JEANETTE LN	SANTA ANA	CA	92705
JAZ CHASE LEBLANC	308 E JEANETTE LN #46	SANTA ANA	CA	92705
VAL H TRAN	310 JEANETTE LN	SANTA ANA	CA	92705
DIEM DANG NGOC NGUYEN	504 JEANETTE LN	SANTA ANA	CA	92705
SHASHA GUAN	506 JEANETTE LN	SANTA ANA	CA	92705
LUIS M MARCANO	508 JEANETTE LN	SANTA ANA	CA	92705
TRANG NGUYEN	510 JEANETTE LN	SANTA ANA	CA	92705
FELIX G KANG	512 E JEANETTE LN	SANTA ANA	CA	92705
KHANH HUYNH	6633 UPTON LN	NASHVILLE	TN	37209
JULIETA ROXAS & MICHAEL PALARUAN RILLERA	516 JEANETTE LN	SANTA ANA	CA	92705
SHO & YUKA HATTA	522 E JEANETTE LN	SANTA ANA	CA	92705
ADAM GENTRY	524 E JEANETTE LN	SANTA ANA	CA	92705
ERIC WU	526 JEANETTE LN	SANTA ANA	CA	92705
KIM U YONG	10 TAQUITZ	IRVINE	CA	92602
SERENA K NG	326 JEANETTE LN	SANTA ANA	CA	92705
ALAN & LAURETTA RANDLE	324 JEANETTE LN	SANTA ANA	CA	92705
GLOBAL MBL	20 VIA SIENNA	DANA POINT	CA	92629
MARKUS METTLER	320 JEANETTE LN	SANTA ANA	CA	92705
PETER KIM	318 JEANETTE LN	SANTA ANA	CA	92705
KINLEN B GEE	4570 N QUARTZ HILL PL	TUCSON	AZ	85750
SEEMA CHOPRA	414 E JEANETTE LN	SANTA ANA	CA	92705
JENNY CHIH CHING CHANG	830 GARTEL DR	WALNUT	CA	91789
KEVIN I KIM	410 JEANETTE LN	SANTA ANA	CA	92705
AIDAN MOUSAVI	408 JEANETTE LN	SANTA ANA	CA	92705
DIANA ELIZABETH MATA	406 E JEANETTE LN	SANTA ANA	CA	92705
HENRY TSE	905 FALL CREEK CT	WALNUT	CA	92705
JOHN ALVES	448 JEANETTE LN	SANTA ANA	CA	92705
LATAYNA S & SHINOBU TYGI	450 E JEANETTE LN	SANTA ANA	CA	92705
BRIAN BUI	452 JEANETTE LN	SANTA ANA	CA	92705
FRANK & DEBORAH A RIGLEY	454 JEANETTE LN	SANTA ANA	CA	92705
CHRISTOPHER J COTR KERNUTT	426 E JEANETTE LN	SANTA ANA	CA	92705
MARC MONGE	424 E JEANETTE LN UNIT 76	SANTA ANA	CA	92705
EUGENE CHANG	422 E JEANETTE LN	SANTA ANA	CA	92705
SOHAYLA M LAJEVARDI	420 E JEANETTE LN	SANTA ANA	CA	92705
DAVID T TRUONG	432 JEANETTE LN	SANTA ANA	CA	92705
CHARLES W DAFF	434 E JEANETTE LN	SANTA ANA	CA	92705
KEVIN HO	436 JEANETTE LN	SANTA ANA	CA	92705
TI & JENNIFER LE	438 E JEANETTE LN	SANTA ANA	CA	92705
BRIANNE R KELLEY	440 JEANETTE LN	SANTA ANA	CA	92705
JEFFREY & ANDREA HENDRICKS	442 E JEANETTE LN	SANTA ANA	CA	92705
DANIEL C JAFFURS	604 JEANETTE LN	SANTA ANA	CA	92705

JOHN SU LIM	606 JEANETTE LN	SANTA ANA	CA	92705
MONICA STONER	608 E JEANETTE LN	SANTA ANA	CA	92705
EILEEN HUI-YI WANG	610 JEANETTE LN	SANTA ANA	CA	92705
LAN SHU KNUDTSON	102 S FLOWER HILL ST	BREA	CA	92821
GALEN HOOKS	614 E JEANETTE LN	SANTA ANA	CA	92705
NANXIN LI	638 JEANETTE LN	SANTA ANA	CA	92705
UN HO & EMILY KEUNJUNG CHUNG	640 JEANETTE LN	SANTA ANA	CA	92705
ALI NAGIB TAHER SAAD	634 E JEANETTE LN	SANTA ANA	CA	92705
JOSHUA C STUMP	636 E JEANETTE LN	SANTA ANA	CA	92705
ANTHONY S THOMAS	626 JEANETTE LN	SANTA ANA	CA	92705
KIM ALLEN BUSHONG	7532 BARBI LN	LA PALMA	CA	90623
ANDREW KUNDE	622 E JEANETTE LN	SANTA ANA	CA	92705
JIANWEI & WENDY XU BEI	13571 BELLE RIVE	SANTA ANA	CA	92705
DANNY NATHAN & SAMANTHA CHRISTINE VU	335 E MEMORY LN	SANTA ANA	CA	92705
MICHAEL P TIROHN	337 E MEMORY LN	SANTA ANA	CA	92705
FRANCIS NA	339 E MEMORY LN	SANTA ANA	CA	92705
RICHARD PILKINGTON	341 E MEMORY LN	SANTA ANA	CA	92705
TERISHIA TRAN	1031 RESEDA ST	ANAHEIM	CA	92806
ERIC LAN	349 MEMORY LN	SANTA ANA	CA	92705
CHRISTIAN A KELLEY	351 E MEMORY LN	SANTA ANA	CA	92705
GERARDO DE JESUS	353 E MEMORY LN	SANTA ANA	CA	92705
LLESENA ONTIVERAS	355 MEMORY LN	SANTA ANA	CA	92705
RICHARD F & PATTY LOPEZ	357 E MEMORY LN	SANTA ANA	CA	92705
KRISTINE & REYNALDO M SORIANO	3610 ASTER ST	SEAL BEACH	CA	90740
NASIR JAVED	361 MEMORY LN	SANTA ANA	CA	92705
COURBET LLC	205 N SYCAMORE ST	SANTA ANA	CA	92701
ROARING RIVER PROPERTIES	369 E MEMORY LN	SANTA ANA	CA	92705
AARON HAMILTON	371 E MEMORY LN	SANTA ANA	CA	92705
OCCUPANT	2303 N RIVERSIDE DR	SANTA ANA	CA	92706
OCCUPANT	2319 N RIVERSIDE DR	SANTA ANA	CA	92706
OCCUPANT	2303 N RIVERSIDE DR	SANTA ANA	CA	92706
OCCUPANT	2312 N BROADWAY	SANTA ANA	CA	92706
OCCUPANT	2353 N RIVERSIDE DR	SANTA ANA	CA	92706
OCCUPANT	2365 N RIVERSIDE DR	SANTA ANA	CA	92706
OCCUPANT	2340 N RIVERSIDE DR	SANTA ANA	CA	92706
OCCUPANT	2320 N RIVERSIDE DR	SANTA ANA	CA	92706
OCCUPANT	2333 N BROADWAY	SANTA ANA	CA	92706
OCCUPANT	2333 N BROADWAY # 300	SANTA ANA	CA	92706
OCCUPANT	2333 N BROADWAY # 460	SANTA ANA	CA	92706
OCCUPANT	2333 N BROADWAY # 260	SANTA ANA	CA	92706
OCCUPANT	2333 N BROADWAY # 350	SANTA ANA	CA	92706
OCCUPANT	2333 N BROADWAY # 200	SANTA ANA	CA	92706
OCCUPANT	2333 N BROADWAY # 100	SANTA ANA	CA	92706
OCCUPANT	2333 N BROADWAY # 230	SANTA ANA	CA	92706
OCCUPANT	2333 N BROADWAY # 250	SANTA ANA	CA	92706
OCCUPANT	2333 N BROADWAY # 130	SANTA ANA	CA	92706
OCCUPANT	2333 N BROADWAY # 210	SANTA ANA	CA	92706
OCCUPANT	2333 N BROADWAY # 205	SANTA ANA	CA	92706
OCCUPANT	2333 N BROADWAY # 150	SANTA ANA	CA	92706
OCCUPANT	2333 N BROADWAY # 410	SANTA ANA	CA	92706
OCCUPANT	2333 N BROADWAY # 440	SANTA ANA	CA	92706
OCCUPANT	2333 N BROADWAY # 432	SANTA ANA	CA	92706
OCCUPANT	2333 N BROADWAY # 320	SANTA ANA	CA	92706
OCCUPANT	2323 N BROADWAY # 249	SANTA ANA	CA	92706
OCCUPANT	2323 N BROADWAY # 319	SANTA ANA	CA	92706
OCCUPANT	2323 N BROADWAY # 301	SANTA ANA	CA	92706
OCCUPANT	2323 N BROADWAY # 240	SANTA ANA	CA	92706
OCCUPANT	2323 N BROADWAY # 201	SANTA ANA	CA	92706
OCCUPANT	2323 N BROADWAY # 302	SANTA ANA	CA	92706
OCCUPANT	2323 N BROADWAY # 340	SANTA ANA	CA	92706
OCCUPANT	2323 N BROADWAY # 330	SANTA ANA	CA	92706
OCCUPANT	2323 N BROADWAY # 245	SANTA ANA	CA	92706
OCCUPANT	2700 N MAIN ST# 850	SANTA ANA	CA	92705
OCCUPANT	2700 N MAIN ST# 1107	SANTA ANA	CA	92705
OCCUPANT	2700 N MAIN ST# 1105	SANTA ANA	CA	92705
OCCUPANT	2700 N MAIN ST# 1050	SANTA ANA	CA	92705
OCCUPANT	2700 N MAIN ST# 120	SANTA ANA	CA	92705
OCCUPANT	2700 N MAIN ST# 990	SANTA ANA	CA	92705
OCCUPANT	2700 N MAIN ST# 320	SANTA ANA	CA	92705
OCCUPANT	2700 N MAIN ST# 310	SANTA ANA	CA	92705
OCCUPANT	2700 N MAIN ST# 850	SANTA ANA	CA	92705

OCCUPANT	2700 N MAIN ST# 610	SANTA ANA	CA	92705
OCCUPANT	2700 N MAIN ST# 620	SANTA ANA	CA	92705
OCCUPANT	2700 N MAIN ST# 800	SANTA ANA	CA	92705
OCCUPANT	2700 N MAIN ST# 508	SANTA ANA	CA	92705
OCCUPANT	2700 N MAIN ST# 765	SANTA ANA	CA	92705
OCCUPANT	2700 N MAIN ST# 335	SANTA ANA	CA	92705
OCCUPANT	2700 N MAIN ST# 1040	SANTA ANA	CA	92705
OCCUPANT	2700 N MAIN ST# 845	SANTA ANA	CA	92705
OCCUPANT	2700 N MAIN ST# 150	SANTA ANA	CA	92705
OCCUPANT	2700 N MAIN ST# 510	SANTA ANA	CA	92705
OCCUPANT	2700 N MAIN ST# 535	SANTA ANA	CA	92705
OCCUPANT	2700 N MAIN ST# 506	SANTA ANA	CA	92705
OCCUPANT	2700 N MAIN ST# 761	SANTA ANA	CA	92705
OCCUPANT	2700 N MAIN ST# 630	SANTA ANA	CA	92705
OCCUPANT	2700 N MAIN ST# 1070	SANTA ANA	CA	92705
OCCUPANT	2700 N MAIN ST# 860	SANTA ANA	CA	92705
OCCUPANT	2700 N MAIN ST# 500	SANTA ANA	CA	92705
OCCUPANT	2700 N MAIN ST# 760	SANTA ANA	CA	92705
OCCUPANT	2700 N MAIN ST# 945	SANTA ANA	CA	92705
OCCUPANT	2700 N MAIN ST# 850	SANTA ANA	CA	92705
OCCUPANT	2700 N MAIN ST# 1107	SANTA ANA	CA	92705
OCCUPANT	2700 N MAIN ST# 1105	SANTA ANA	CA	92705
OCCUPANT	2700 N MAIN ST# 1050	SANTA ANA	CA	92705
OCCUPANT	2700 N MAIN ST# 120	SANTA ANA	CA	92705
OCCUPANT	2700 N MAIN ST# 990	SANTA ANA	CA	92705
OCCUPANT	2700 N MAIN ST# 320	SANTA ANA	CA	92705
OCCUPANT	2700 N MAIN ST# 310	SANTA ANA	CA	92705
OCCUPANT	2700 N MAIN ST# 850	SANTA ANA	CA	92705
OCCUPANT	2700 N MAIN ST# 610	SANTA ANA	CA	92705
OCCUPANT	2700 N MAIN ST# 620	SANTA ANA	CA	92705
OCCUPANT	2700 N MAIN ST# 800	SANTA ANA	CA	92705
OCCUPANT	2700 N MAIN ST# 508	SANTA ANA	CA	92705
OCCUPANT	2700 N MAIN ST# 765	SANTA ANA	CA	92705
OCCUPANT	2700 N MAIN ST# 335	SANTA ANA	CA	92705
OCCUPANT	2700 N MAIN ST# 1040	SANTA ANA	CA	92705
OCCUPANT	2700 N MAIN ST# 845	SANTA ANA	CA	92705
OCCUPANT	2700 N MAIN ST# 150	SANTA ANA	CA	92705
OCCUPANT	2700 N MAIN ST# 510	SANTA ANA	CA	92705
OCCUPANT	2700 N MAIN ST# 535	SANTA ANA	CA	92705
OCCUPANT	2700 N MAIN ST# 506	SANTA ANA	CA	92705
OCCUPANT	2700 N MAIN ST# 761	SANTA ANA	CA	92705
OCCUPANT	2700 N MAIN ST# 630	SANTA ANA	CA	92705
OCCUPANT	2700 N MAIN ST# 1070	SANTA ANA	CA	92705
OCCUPANT	2700 N MAIN ST# 860	SANTA ANA	CA	92705
OCCUPANT	2700 N MAIN ST# 500	SANTA ANA	CA	92705
OCCUPANT	2700 N MAIN ST# 760	SANTA ANA	CA	92705
OCCUPANT	2700 N MAIN ST# 945	SANTA ANA	CA	92705
OCCUPANT	2670 N MAIN ST# 370	SANTA ANA	CA	92705
OCCUPANT	2670 N MAIN ST# 200	SANTA ANA	CA	92705
OCCUPANT	2670 N MAIN ST# 240	SANTA ANA	CA	92705
OCCUPANT	2670 N MAIN ST# 265	SANTA ANA	CA	92705
OCCUPANT	2670 N MAIN ST# 245	SANTA ANA	CA	92705
OCCUPANT	2670 N MAIN ST# 305	SANTA ANA	CA	92705
OCCUPANT	2670 N MAIN ST# 100	SANTA ANA	CA	92705
OCCUPANT	2670 N MAIN ST# 150	SANTA ANA	CA	92705
OCCUPANT	2670 N MAIN ST# 300	SANTA ANA	CA	92705
OCCUPANT	2670 N MAIN ST# 350	SANTA ANA	CA	92705
OCCUPANT	2670 N MAIN ST# 270	SANTA ANA	CA	92705
OCCUPANT	2670 N MAIN ST# 320	SANTA ANA	CA	92705
OCCUPANT	2670 N MAIN ST# 380	SANTA ANA	CA	92705
OCCUPANT	2670 N MAIN ST# 250	SANTA ANA	CA	92705
OCCUPANT	2660 N MAIN ST# ST	SANTA ANA	CA	92705
OCCUPANT	2600 N MAIN ST# ST	SANTA ANA	CA	92705
OCCUPANT	301 MAIN PLACE DR	SANTA ANA	CA	92705
OCCUPANT	209 EDGEWOOD RD	SANTA ANA	CA	92706
OCCUPANT	201 EDGEWOOD RD	SANTA ANA	CA	92706
OCCUPANT	2677 N MAIN ST# 500	SANTA ANA	CA	92705
OCCUPANT	2677 N MAIN ST# 400	SANTA ANA	CA	92705
OCCUPANT	2677 N MAIN ST# 600	SANTA ANA	CA	92705
OCCUPANT	2677 N MAIN ST# 460	SANTA ANA	CA	92705
OCCUPANT	2677 N MAIN ST# 115	SANTA ANA	CA	92705

OCCUPANT	2677 N MAIN ST# 108	SANTA ANA	CA	92705
OCCUPANT	2677 N MAIN ST# 860	SANTA ANA	CA	92705
OCCUPANT	2677 N MAIN ST# 870	SANTA ANA	CA	92705
OCCUPANT	2677 N MAIN ST# 320	SANTA ANA	CA	92705
OCCUPANT	2677 N MAIN ST# 820	SANTA ANA	CA	92705
OCCUPANT	2677 N MAIN ST# 910	SANTA ANA	CA	92705
OCCUPANT	2677 N MAIN ST# 465	SANTA ANA	CA	92705
OCCUPANT	2677 N MAIN ST# 825	SANTA ANA	CA	92705
OCCUPANT	2677 N MAIN ST# 901	SANTA ANA	CA	92705
OCCUPANT	2677 N MAIN ST# 125	SANTA ANA	CA	92705
OCCUPANT	2677 N MAIN ST# 100	SANTA ANA	CA	92705
OCCUPANT	2677 N MAIN ST# 250	SANTA ANA	CA	92705
OCCUPANT	2677 N MAIN ST# 850	SANTA ANA	CA	92705
OCCUPANT	2677 N MAIN ST# 520	SANTA ANA	CA	92705
OCCUPANT	2677 N MAIN ST# 1070	SANTA ANA	CA	92705
OCCUPANT	2677 N MAIN ST# 1080	SANTA ANA	CA	92705
OCCUPANT	2677 N MAIN ST# 370	SANTA ANA	CA	92705
OCCUPANT	2677 N MAIN ST# 800	SANTA ANA	CA	92705
OCCUPANT	2677 N MAIN ST# 930	SANTA ANA	CA	92705
OCCUPANT	2677 N MAIN ST# 1000	SANTA ANA	CA	92705
OCCUPANT	2677 N MAIN ST# 1050	SANTA ANA	CA	92705
OCCUPANT	2677 N MAIN ST# 230	SANTA ANA	CA	92705
OCCUPANT	2677 N MAIN ST# 440	SANTA ANA	CA	92705
OCCUPANT	2677 N MAIN ST# 225	SANTA ANA	CA	92705
OCCUPANT	2677 N MAIN ST# 560	SANTA ANA	CA	92705
OCCUPANT	2677 N MAIN ST# 130	SANTA ANA	CA	92705
OCCUPANT	2677 N MAIN ST# 110	SANTA ANA	CA	92705
OCCUPANT	2677 N MAIN ST# 550	SANTA ANA	CA	92705
OCCUPANT	2677 N MAIN ST# 200	SANTA ANA	CA	92705
OCCUPANT	2677 N MAIN ST# 300	SANTA ANA	CA	92705
OCCUPANT	2677 N MAIN ST# 540	SANTA ANA	CA	92705
OCCUPANT	2677 N MAIN ST# 900	SANTA ANA	CA	92705
OCCUPANT	2677 N MAIN ST# 240	SANTA ANA	CA	92705
OCCUPANT	2677 N MAIN ST# 310	SANTA ANA	CA	92705
OCCUPANT	2677 N MAIN ST# 815	SANTA ANA	CA	92705
OCCUPANT	2677 N MAIN ST# 1020	SANTA ANA	CA	92705
OCCUPANT	2677 N MAIN ST# 350	SANTA ANA	CA	92705
OCCUPANT	2677 N MAIN ST# 830	SANTA ANA	CA	92705
OCCUPANT	2549 VALENCIA ST	SANTA ANA	CA	92706
OCCUPANT	2332 N SPURGEON ST	SANTA ANA	CA	92706
OCCUPANT	2343 N BUSH ST	SANTA ANA	CA	92706
OCCUPANT	2339 N BUSH ST	SANTA ANA	CA	92706
OCCUPANT	2325 N BUSH ST	SANTA ANA	CA	92706
OCCUPANT	2315 N BUSH ST	SANTA ANA	CA	92706
OCCUPANT	2311 N BUSH ST	SANTA ANA	CA	92706
OCCUPANT	2404 VALENCIA ST	SANTA ANA	CA	92706
OCCUPANT	2332 VALENCIA ST	SANTA ANA	CA	92706
OCCUPANT	2320 FRENCH ST	SANTA ANA	CA	92706
OCCUPANT	2316 FRENCH ST	SANTA ANA	CA	92706
OCCUPANT	2345 N SPURGEON ST	SANTA ANA	CA	92706
OCCUPANT	2327 N SPURGEON ST	SANTA ANA	CA	92706
OCCUPANT	2313 N SPURGEON ST	SANTA ANA	CA	92706
OCCUPANT	2773 MAIN ST	IRVINE	CA	92614
OCCUPANT	2775 MAIN ST	IRVINE	CA	92614
OCCUPANT	2777 MAIN ST	IRVINE	CA	92614
OCCUPANT	2783 MAIN ST	IRVINE	CA	92614
OCCUPANT	2785 MAIN ST	IRVINE	CA	92614
OCCUPANT	2787 MAIN ST	IRVINE	CA	92614
OCCUPANT	2789 MAIN ST	IRVINE	CA	92614
OCCUPANT	2791 MAIN ST	IRVINE	CA	92614
OCCUPANT	103 E MEMORY LN	IRVINE	CA	92614
OCCUPANT	111 E MEMORY LN	IRVINE	CA	92614
OCCUPANT	121 E MEMORY LN	IRVINE	CA	92614
OCCUPANT	131 E MEMORY LN	IRVINE	CA	92614
OCCUPANT	2546 VALENCIA ST	SANTA ANA	CA	92706
OCCUPANT	2526 VALENCIA ST	SANTA ANA	CA	92706
OCCUPANT	2524 VALENCIA ST	SANTA ANA	CA	92706
OCCUPANT	2510 VALENCIA ST	SANTA ANA	CA	92706
OCCUPANT	405 EDGEWOOD RD	SANTA ANA	CA	92706
OCCUPANT	411 EDGEWOOD RD	SANTA ANA	CA	92706
OCCUPANT	2502 VALENCIA ST	SANTA ANA	CA	92706

OCCUPANT	2543 FRENCH ST	SANTA ANA	CA	92706
OCCUPANT	2539 FRENCH ST	SANTA ANA	CA	92706
OCCUPANT	2531 FRENCH ST	SANTA ANA	CA	92706
OCCUPANT	2515 FRENCH ST	SANTA ANA	CA	92706
OCCUPANT	2528 FRENCH ST	SANTA ANA	CA	92706
OCCUPANT	2510 FRENCH ST	SANTA ANA	CA	92706
OCCUPANT	2517 N SPURGEON ST	SANTA ANA	CA	92706
OCCUPANT	2521 N SPURGEON ST	SANTA ANA	CA	92706
OCCUPANT	304 VIRGINIA AVE	SANTA ANA	CA	92706
OCCUPANT	315 VIRGINIA AVE	SANTA ANA	CA	92706
OCCUPANT	309 VIRGINIA AVE	SANTA ANA	CA	92706
OCCUPANT	2230 N MAIN ST	SANTA ANA	CA	92706
OCCUPANT	219 MEMORY LN	SANTA ANA	CA	92705
OCCUPANT	221 MEMORY LN	SANTA ANA	CA	92705
OCCUPANT	229 MEMORY LN	SANTA ANA	CA	92705
OCCUPANT	231 MEMORY LN	SANTA ANA	CA	92705
OCCUPANT	193 E CITY PLACE DR	SANTA ANA	CA	92705
OCCUPANT	185 E CITY PLACE DR	SANTA ANA	CA	92705
OCCUPANT	175 E CITY PLACE DR	SANTA ANA	CA	92705
OCCUPANT	173 E CITY PLACE DR	SANTA ANA	CA	92705
OCCUPANT	171 E CITY PLACE DR	SANTA ANA	CA	92705
OCCUPANT	167 E CITY PLACE DR	SANTA ANA	CA	92705
OCCUPANT	207 E CITY PLACE DR	SANTA ANA	CA	92705
OCCUPANT	153 E CITY PLACE DR	SANTA ANA	CA	92705
OCCUPANT	149 E CITY PLACE DR	SANTA ANA	CA	92705
OCCUPANT	145 E CITY PLACE DR	SANTA ANA	CA	92705
OCCUPANT	141 E CITY PLACE DR	SANTA ANA	CA	92705
OCCUPANT	135 E CITY PLACE DR	SANTA ANA	CA	92705
OCCUPANT	131 E CITY PLACE DR	SANTA ANA	CA	92705
OCCUPANT	129 E CITY PLACE DR	SANTA ANA	CA	92705
OCCUPANT	125 E CITY PLACE DR	SANTA ANA	CA	92705
OCCUPANT	123 E CITY PLACE DR	SANTA ANA	CA	92705
OCCUPANT	121 E CITY PLACE DR	SANTA ANA	CA	92705
OCCUPANT	119 E CITY PLACE DR	SANTA ANA	CA	92705
OCCUPANT	111 E CITY PLACE DR	SANTA ANA	CA	92705
OCCUPANT	109 E CITY PLACE DR	SANTA ANA	CA	92705
OCCUPANT	103 E CITY PLACE DR	SANTA ANA	CA	92705
OCCUPANT	3017 N MAIN ST	SANTA ANA	CA	92705
OCCUPANT	3007 N MAIN ST	SANTA ANA	CA	92705
OCCUPANT	258 E JEANETTE LN	SANTA ANA	CA	92705
OCCUPANT	226 E JEANETTE LN	SANTA ANA	CA	92705
OCCUPANT	224 E JEANETTE LN	SANTA ANA	CA	92705
OCCUPANT	212 E JEANETTE LN	SANTA ANA	CA	92705
OCCUPANT	208 E JEANETTE LN	SANTA ANA	CA	92705
OCCUPANT	249 E JEANETTE LN	SANTA ANA	CA	92705
OCCUPANT	255 E JEANETTE LN	SANTA ANA	CA	92705
OCCUPANT	514 E JEANETTE LN	SANTA ANA	CA	92705
OCCUPANT	328 E JEANETTE LN	SANTA ANA	CA	92705
OCCUPANT	322 E JEANETTE LN	SANTA ANA	CA	92705
OCCUPANT	316 E JEANETTE LN	SANTA ANA	CA	92705
OCCUPANT	412 E JEANETTE LN	SANTA ANA	CA	92705
OCCUPANT	404 E JEANETTE LN	SANTA ANA	CA	92705
OCCUPANT	612 E JEANETTE LN	SANTA ANA	CA	92705
OCCUPANT	624 E JEANETTE LN	SANTA ANA	CA	92705
OCCUPANT	620 E JEANETTE LN	SANTA ANA	CA	92705
OCCUPANT	347 MEMORY LN	SANTA ANA	CA	92705
OCCUPANT	359 MEMORY LN	SANTA ANA	CA	92705
OCCUPANT	367 MEMORY LN	SANTA ANA	CA	92705

1195 COPIES & CHECKLIST



Planning and Building Agency
Planning Division
20 Civic Center Plaza
P.O. Box 1988 (M-20)
Santa Ana, CA 92702
(714) 647-5804
www.santa-ana.org

DISCRETIONARY ACTION SUBMITTAL CHECKLIST

E. Please obtain the following information from the County of Orange:

- 1. Provide one **assessor's parcel map**. The following information must be provided on the assessor parcel map and consolidated on only one sheet of paper:
 - a. A north arrow.
 - b. A **1,000-foot radius circle** from exterior boundaries of subject property.
 - c. PRINT IN existing land uses (school, market, auto repair, SFR (single-family residences), etc.) within the 1,000-foot radius.
 - d. PRINT IN street addresses of each property within the 1,000-foot radius.

2. Provide mailing **labels for property owners and occupants (renters/business tenants)** within **1,000 feet** of the subject parcel, including the subject site. Include each property owner's or occupant's **name, address, and APN on each label**. In addition to the required sets of labels, submit a Microsoft Excel spreadsheet with the required information on a CD or USB flash-drive. Each set of addresses may be on City provided label sheets or other equivalent preprinted gummed labels.

* **Sets of Mailing Labels Required** (Eight and one-half inch format. Labels may not be older than six months.)

- a. One (1) set of mailing labels; and **ONE COPY OF EXCEL SPREADSHEET**
- c. One (1) digital Microsoft Excel copy on a USB flash-drive **(CD)**

F. Pay the appropriate fees at the time of the Discretionary Action submittal.

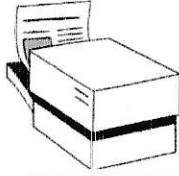
G. Plans, Applications, Photographs, and Mailing Labels must be submitted in digital format (USB flash-drive).

TOTAL OWNERS = 449
TOTAL OCCUPANTS = 243

OWNERSHIP LISTING SERVICE

Notification Services
Variances ▪ Cups ▪ ABC's
AQMD'S ▪ Maps ▪ Lists

CATHY McDERMOTT
Phone (951) 699-8064
Fax (951) 699-8064
ownershiplisting@hotmaill.com



Ownership Listing Service est.1984
 Cathy McDermott, Owner
 P.O.Box 890684
 Temecula CA 92589
 Phone & Fax 951.699.8064

INVOICE

Client

Company: CURT PRINGLE & ASSOCIATES
 Address _____
 City _____ State _____ ZIP _____
 Attn: AMANDA HERNANDEZ

DATE: 4/7/2022
 INVOICE NO 7840

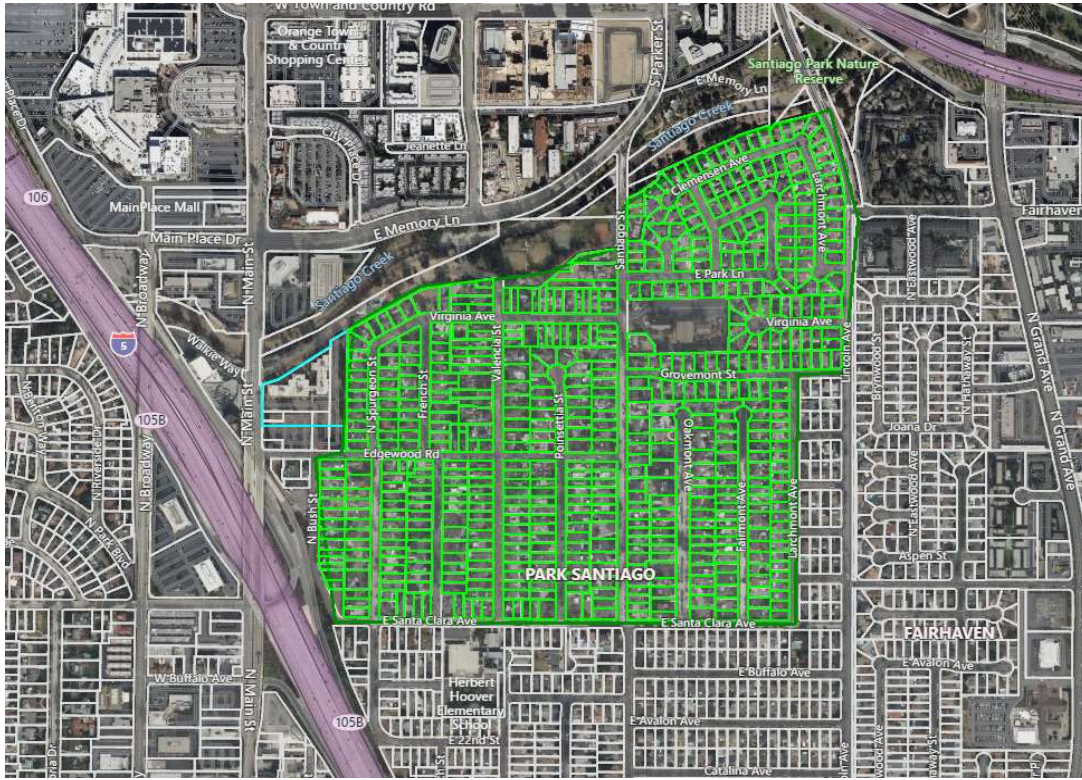
Description	TOTAL
1000 NOTIFICATION PACKAGE FOR: 2525 MAIN ST SANTA ANA CA	\$600.00
FEE INCLUDES FIRST 75 PARCELS WITH \$1.00 PER ADDITIONAL TOTAL PARCELS/LABEL COUNT =449 OWNERS + 243 OCCUPANTS= 692 ADDITIONAL PARCEL/LABEL FEE OF= 692-75= 617	\$617.00
FEDERAL EXPRESS FEE	INC
ONE DAY SERVICE FEE	N/A
OTHER FEES- FIELD WORK (\$150.00)	INC
POSTAGE , MAILING, NOTORY AND COPYING COSTS	INC
SUBTOTAL	\$1,217.00
PROPOSAL NOT TO EXCEED \$1180	
TOTAL	\$1,180.00

Office Use Only

Please make all checks payable to Cathy McDermott

Thank You for your business !!!

In addition to the required 1000ft noticing that was done by mail, the following addresses were noticed by flyers left at each residence.



APN	Address	City	Zip	Owner Name
003-031-01	2614 VALENCIA ST	SANTA ANA	92706	SWANN, FRANK W
003-031-02	2610 VALENCIA ST	SANTA ANA	92706	CARTNEY, THOMAS
003-031-03	2606 VALENCIA ST	SANTA ANA	92706	SAKIOKA, LAUREN MIKE
003-031-05	2560 VALENCIA ST	SANTA ANA	92706	VASQUEZ, FRANCINE
003-031-06	2556 VALENCIA ST	SANTA ANA	92706	GORGONE, STEPHEN
003-031-07	410 VIRGINIA AVE	SANTA ANA	92706	CORLEY, MARILYN A
003-031-08	2552 VALENCIA ST	SANTA ANA	92706	GRIFFIN, PETER
003-031-09	407 VIRGINIA AVE	SANTA ANA	92706	LEE, MIKE K
003-031-10	2602 VALENCIA ST	SANTA ANA	92706	GAVIN, JOHN FRANCIS
003-032-01	2628 SANTIAGO ST	SANTA ANA	92706	WEST, JAN
003-032-05	501 VIRGINIA AVE	SANTA ANA	92706	VANCE, CANDICE D
003-032-06	505 VIRGINIA AVE	SANTA ANA	92706	ATKINSON, LAURA L
003-032-07	511 VIRGINIA AVE	SANTA ANA	92706	ANDRES IV, EUGEN CHARLES
003-032-09	527 VIRGINIA AVE	SANTA ANA	92706	TOVAR, EDUARDO A
003-032-10	529 VIRGINIA AVE	SANTA ANA	92706	ALLEN, BRIAN NELSON
003-032-11	605 VIRGINIA AVE	SANTA ANA	92706	ARNQUIST, ROBERT LAWTON
003-032-12	611 VIRGINIA AVE	SANTA ANA	92706	BRADEN, CHARLES ANTHONY
003-032-13	615 VIRGINIA AVE	SANTA ANA	92706	REYNOLDS, NANCY A
003-032-14	619 VIRGINIA AVE	SANTA ANA	92706	MARTINEZ, MAURICIO A
003-032-16	625 VIRGINIA AVE	SANTA ANA	92706	CRUZ, SERGIO D
003-032-17	2610 SANTIAGO ST	SANTA ANA	92706	CHENG, ELSEN
003-032-18	2620 SANTIAGO ST	SANTA ANA	92706	WEST, JAN
003-032-19	523 VIRGINIA AVE	SANTA ANA	92706	SMITH, STEPHEN
003-032-20	517 VIRGINIA AVE	SANTA ANA	92706	HARWOOD, RUPERT
003-032-23	2616 SANTIAGO ST	SANTA ANA	92706	WEST, JAN
003-033-01	2561 VALENCIA ST	SANTA ANA	92706	TOCHIKUBO, LUCKY
003-033-02	2557 VALENCIA ST	SANTA ANA	92706	OMOHUNDRO, CHARLOTTE
003-033-03	2549 VALENCIA ST	SANTA ANA	92706	CAVANAUGH, THERESA E

003-033-04	514 VIRGINIA AVE	SANTA ANA	92706 THOMAS, JACOB E
003-033-05	520 VIRGINIA AVE	SANTA ANA	92706 MORA, MARIA DE LA
003-033-06	524 VIRGINIA AVE	SANTA ANA	92706 RATCLIFFE, MORGAN ASHLEY
003-033-07	530 VIRGINIA AVE	SANTA ANA	92706 TAYLOR, LOIS A
003-033-08	602 VIRGINIA AVE	SANTA ANA	92706 PINCHIN, NEIL C
003-033-09	610 VIRGINIA AVE	SANTA ANA	92706 HEIMAN, RORY
003-033-10	614 VIRGINIA AVE	SANTA ANA	92706 OROZCO, RAFAEL A
003-033-11	620 VIRGINIA AVE	SANTA ANA	92706 OROZCO, RAFAEL A
003-033-12	624 VIRGINIA AVE	SANTA ANA	92706 YAMAMI, HEIDI K
003-033-16	2552 SANTIAGO ST	SANTA ANA	92706 TRAN, JACQUELINE HONG
003-033-17	2556 SANTIAGO ST	SANTA ANA	92706 GUILLEN, RAFAEL MENDEZ
003-050-02	2527 SANTIAGO ST	SANTA ANA	92706 HAMMOND, TODD M
003-050-05	2511 SANTIAGO ST	SANTA ANA	92706 KOEHLI, CRAIG S
003-050-06	2507 SANTIAGO ST	SANTA ANA	92706 NUNGARAY, BERNARDO J
003-050-07	2501 SANTIAGO ST	SANTA ANA	92706 PRAKASH, ANURADHA
003-050-12	2502 OAKMONT AVE	SANTA ANA	92706 LEIGH, WILLIAM E
003-050-16	2501 OAKMONT AVE	SANTA ANA	92706 PLANTAMURA, MICHAEL THOMAS
003-050-17	2528 FAIRMONT AVE	SANTA ANA	92706 HERRIN, JACQUELINE L
003-050-18	2524 FAIRMONT AVE	SANTA ANA	92706 KELLEY, BRITTANY LEIGH
003-050-19	2520 FAIRMONT AVE	SANTA ANA	92706 GONZALES, MARIA L
003-050-20	2514 FAIRMONT AVE	SANTA ANA	92706 ANGIER, GREGGORY R
003-050-21	2508 FAIRMONT AVE	SANTA ANA	92706 PUGMIRE, RAND T
003-050-22	2502 FAIRMONT AVE	SANTA ANA	92706 VALENZUELA, ARTURO
003-050-23	2527 FAIRMONT AVE	SANTA ANA	92706 HETTICK, NORAH KATHLEEN
003-050-24	2523 FAIRMONT AVE	SANTA ANA	92706 MIRELEZ, CHRISTOPHER
003-050-25	2519 FAIRMONT AVE	SANTA ANA	92706 LUONG, DAVID
003-050-26	2515 FAIRMONT AVE	SANTA ANA	92706 GENTRY, STEPHEN A
003-050-27	2507 FAIRMONT AVE	SANTA ANA	92706 OCHOA, MANUEL HORACIO
003-050-28	2501 FAIRMONT AVE	SANTA ANA	92706 HENDERSON, NANCY V
003-050-29	2525 SANTIAGO ST	SANTA ANA	92706 ELIOT, RONNELL F
003-050-30	2517 SANTIAGO ST	SANTA ANA	92706 HEBERER, ZACK
003-050-31	2515 OAKMONT AVE	SANTA ANA	92706 CORDIEL, JAMES B
003-050-33	2522 OAKMONT AVE	SANTA ANA	92706 AVILA, MAYA VICTORIA
003-050-34	2512 OAKMONT AVE	SANTA ANA	92706 BENITEZ, ROSLYN B
003-050-35	2528 OAKMONT AVE	SANTA ANA	92706 HAVNAER, MICHAEL R
003-050-36	2521 OAKMONT AVE	SANTA ANA	92706 ALEXANDER MCMAHAN C JR TR
003-050-37	2525 OAKMONT AVE	SANTA ANA	92706 LEIGHTON, KENNETH ROBERT
003-050-38	2539 SANTIAGO ST	SANTA ANA	92706 TOMLINSON, LAURA JULIE ALLYN
003-050-39	710 GROVEMONT ST	SANTA ANA	92706 PORTUGAL, YVETTE
003-050-40	714 GROVEMONT ST	SANTA ANA	92706 CORTEZ, MARCOS A
003-050-41	718 GROVEMONT ST	SANTA ANA	92706 SANCHEZ, DARIO
003-050-42	802 GROVEMONT ST	SANTA ANA	92706 SWYTAK, JUDITH M
003-050-43	806 GROVEMONT ST	SANTA ANA	92706 ZARATE ALFREDO JR
003-050-44	810 GROVEMONT ST	SANTA ANA	92706 MUTZ, TRACY
003-050-45	814 GROVEMONT ST	SANTA ANA	92706 MC GUIRE JACK G TR
003-050-46	818 GROVEMONT ST	SANTA ANA	92706 SANCHEZ, DAVID
003-050-47	902 GROVEMONT ST	SANTA ANA	92706 KIOULTZOPOULOS, ERIN
003-050-48	906 GROVEMONT ST	SANTA ANA	92706 HAN, DON
003-050-49	910 GROVEMONT ST	SANTA ANA	92706 COLUNGA JR, HECTOR
003-050-50	2522 LARCHMONT AVI	SANTA ANA	92706 MOREN, ALBERT ANDREW
003-050-51	2518 LARCHMONT AVI	SANTA ANA	92706 BESHEAR, ROBERT S
003-050-52	2514 LARCHMONT AVI	SANTA ANA	92706 HOWARD, ROBERT D
003-050-53	2510 LARCHMONT AVI	SANTA ANA	92706 MC GILL, TRAVIS J
003-050-54	2506 LARCHMONT AVI	SANTA ANA	92706 BROWN, THOMAS J
003-050-55	2502 LARCHMONT AVI	SANTA ANA	92706 VELASCO, DIEGO M
003-050-56	2436 LARCHMONT AVI	SANTA ANA	92706 CARR, DARREN
003-050-57	2432 LARCHMONT AVI	SANTA ANA	92706 MACHAIN, ROBERT D
003-051-01	2545 SANTIAGO ST	SANTA ANA	92706 WOODHOUSE, JOHN
003-051-02	709 GROVEMONT ST	SANTA ANA	92706 DUNTON, DONALD
003-051-03	713 GROVEMONT ST	SANTA ANA	92706 PARISEAU, MARY S

003-051-04	717 GROVEMONT ST	SANTA ANA	92706 PICHARDO, MAGDALENA
003-051-05	801 GROVEMONT ST	SANTA ANA	92706 ROGERS, WILLIAM J
003-051-06	805 GROVEMONT ST	SANTA ANA	92706 CHITTICK, CARRIE LE
003-051-07	809 GROVEMONT ST	SANTA ANA	92706 SHERRILL, KIRK GLENN
003-051-08	813 GROVEMONT ST	SANTA ANA	92706 GARCIA AUGUST III & NICOLE D
003-051-09	817 GROVEMONT ST	SANTA ANA	92706 HAWES, MICHAEL F
003-051-10	901 GROVEMONT ST	SANTA ANA	92706 TOMASICK, JAMES MICHAEL
003-051-11	905 GROVEMONT ST	SANTA ANA	92706 WINTER, ERIC
003-051-12	909 GROVEMONT ST	SANTA ANA	92706 CANCINO, DARCIE
003-051-13	913 GROVEMONT ST	SANTA ANA	92706 DANG, DILLON
003-051-14	917 GROVEMONT ST	SANTA ANA	92706 GARCIA, EDGAR
003-051-15	921 GROVEMONT ST	SANTA ANA	92706 MORNER, TIMOTHY S
003-051-16	1001 GROVEMONT ST	SANTA ANA	92706 YORK, RONALD E
003-051-17	1005 GROVEMONT ST	SANTA ANA	92706 CUENTAS, ANTONIO C
003-051-18	1009 GROVEMONT ST	SANTA ANA	92706 BERNAL, LUCIA R
003-051-19	2530 LINCOLN AVE	SANTA ANA	92706 JOHANN, BRUCE PAUL
003-061-05	2340 N SPURGEON ST	SANTA ANA	92706 PADILLA, GLORIA LISA
003-061-06	2336 N SPURGEON ST	SANTA ANA	92706 FRANCIS, JACK C
003-061-07	2332 N SPURGEON ST	SANTA ANA	92706 TEDRO, R SCOTT
003-061-08	2328 N SPURGEON ST	SANTA ANA	92706 LANDAVERDE, JOSEPH
003-061-09	2324 N SPURGEON ST	SANTA ANA	92706 SALAS, ESTEBAN
003-061-10	2320 N SPURGEON ST	SANTA ANA	92706 PARKER, RUSSELL N
003-061-11	2312 N SPURGEON ST	SANTA ANA	92706 EHRlich, MILES E
003-061-12	2306 N SPURGEON ST	SANTA ANA	92706 RAMIREZ, ARMANDO
003-061-13	2304 N SPURGEON ST	SANTA ANA	92706 BARTON, TRUDY A
003-061-14	2425 N BUSH ST	SANTA ANA	92706 GUEVARA, VERONICA M
003-061-15	2421 N BUSH ST	SANTA ANA	92706 VALENTA ROBERT FRANK II
003-061-16	2417 N BUSH ST	SANTA ANA	92706 FERNANDEZ, DESIREE CHANTE
003-061-17	2343 N BUSH ST	SANTA ANA	92706 ALLEN, ROGER DAVID
003-061-18	2339 N BUSH ST	SANTA ANA	92706 JOHANSEN, IAN
003-061-19	2333 N BUSH ST	SANTA ANA	92706 OLIVER, LORI J
003-061-20	2329 N BUSH ST	SANTA ANA	92706 MARTINEZ, RICHARD G
003-061-29	2426 N SPURGEON ST	SANTA ANA	92706 STEVENSON, EYTHEL M
003-061-30	2412 N SPURGEON ST	SANTA ANA	92706 BEZJIAN, ALBERT
003-061-33	2413 N BUSH ST	SANTA ANA	92706 FERNANDEZ, DANIEL
003-061-35	2408 N SPURGEON ST	SANTA ANA	92706 GONZALEZ, EVAGELINE
003-061-36	2405 N BUSH ST	SANTA ANA	92706 HERNANDEZ, HECTOR M
003-061-37	2409 N BUSH ST	SANTA ANA	92706 MARQUEZ, PETRONILO L
003-061-38	2404 N SPURGEON ST	SANTA ANA	92706 RAUSCH, CYNTHIA L
003-061-39	2416 N SPURGEON ST	SANTA ANA	92706 SOLIS, ANGELA
003-061-41	2321 N BUSH ST	SANTA ANA	92706 NAVARRO, RUDOLF MESA
003-061-43	2325 N BUSH ST	SANTA ANA	92706 MUNIZ, LORENA
003-061-45	2323 N BUSH ST	SANTA ANA	92706 SMITH, DANIEL T
003-061-47	2315 N BUSH ST	SANTA ANA	92706 ATEN, LEONARD JOHN
003-071-01	2428 VALENCIA ST	SANTA ANA	92706 HOUCHEMENS, JERRY CHARLES
003-071-02	2424 VALENCIA ST	SANTA ANA	92706 BISHOP, MICHAEL JON
003-071-03	2420 VALENCIA ST	SANTA ANA	92706 WAREHAM, STEVE PAUL
003-071-04	2416 VALENCIA ST	SANTA ANA	92706 LOPEZ, AUGELINA
003-071-05	2412 VALENCIA ST	SANTA ANA	92706 ROOY, JERRY M VAN
003-071-06	2408 VALENCIA ST	SANTA ANA	92706 COSTELLO, KAREN M
003-071-07	2404 VALENCIA ST	SANTA ANA	92706 LONG ROBERT P TR
003-071-09	2429 FRENCH ST	SANTA ANA	92706 KIRK, RORY
003-071-10	2425 FRENCH ST	SANTA ANA	92706 EDDY, JOHN W
003-071-11	2421 FRENCH ST	SANTA ANA	92706 ARANYI, MILLICRENT JEAN LOW
003-071-12	2415 FRENCH ST	SANTA ANA	92706 PEDERSEN, ALVEN P
003-071-13	2411 FRENCH ST	SANTA ANA	92706 SCHWARZ, MARTIN F
003-071-14	2407 FRENCH ST	SANTA ANA	92706 HYATT, SUSAN J
003-071-15	2403 FRENCH ST	SANTA ANA	92706 MCDONALD, TIMOTHY EDWARD
003-071-17	2341 FRENCH ST	SANTA ANA	92706 AMES, STEVEN
003-071-18	2337 FRENCH ST	SANTA ANA	92706 HENN, COREY

003-071-19	2329 FRENCH ST	SANTA ANA	92706 MEDINA, HENRY
003-071-20	2323 FRENCH ST	SANTA ANA	92706 WIIST, LAWRENCE H
003-071-21	2319 FRENCH ST	SANTA ANA	92706 LOMHEIM, JILL LYNN
003-071-22	2315 FRENCH ST	SANTA ANA	92706 STERETT, RANDALL T
003-071-25	415 E SANTA CLARA A\	SANTA ANA	92706 DOAN, MATTHEW C
003-071-27	2340 VALENCIA ST	SANTA ANA	92706 ARZATE, AMANDA ROSE
003-071-28	2336 VALENCIA ST	SANTA ANA	92706 MITCHELL, ANN L
003-071-29	2332 VALENCIA ST	SANTA ANA	92706 SMITH, DAVID B
003-071-32	2320 VALENCIA ST	SANTA ANA	92706 LAYNE, JAMES EDWARD
003-071-33	2316 VALENCIA ST	SANTA ANA	92706 RAHMANI, ATISSA
003-071-34	2312 VALENCIA ST	SANTA ANA	92706 BERGER, PIETER M
003-071-35	419 E SANTA CLARA A\	SANTA ANA	92706 DE GUZMAN WILLIAM R TR
003-071-36	411 E SANTA CLARA A\	SANTA ANA	92706 GARCIA, ALBINO R
003-071-37	2328 VALENCIA ST	SANTA ANA	92706 VOLMER, KURT J
003-071-38	2324 VALENCIA ST	SANTA ANA	92706 DOYER, DREW A
003-071-39	409 E SANTA CLARA A\	SANTA ANA	92706 SMITH, JOHN M
003-072-02	2422 FRENCH ST	SANTA ANA	92706 SANDERS, RAYMOND
003-072-03	2418 FRENCH ST	SANTA ANA	92706 SANFORD, KATHRYN S
003-072-04	2414 FRENCH ST	SANTA ANA	92706 IAMMARINO, DAMON E
003-072-05	2410 FRENCH ST	SANTA ANA	92706 FONSECA, RAFAEL
003-072-06	2404 FRENCH ST	SANTA ANA	92706 LIUZZI, CATHERINE
003-072-07	2344 FRENCH ST	SANTA ANA	92706 VISMANTAS, ERIC LEE
003-072-08	2340 FRENCH ST	SANTA ANA	92706 JOHNSON, ARCHIE SAMUEL
003-072-09	2330 FRENCH ST	SANTA ANA	92706 MACLEITH, DOUGLAS RANSOM
003-072-10	2324 FRENCH ST	SANTA ANA	92706 SCHWARZ, VOLKER
003-072-11	2322 FRENCH ST	SANTA ANA	92706 CARTER, SHARON A
003-072-12	2320 FRENCH ST	SANTA ANA	92706 SCOTT, JOHN B
003-072-13	2316 FRENCH ST	SANTA ANA	92706 REES HILL, JENNIFER LOUISE
003-072-14	321 E SANTA CLARA A\	SANTA ANA	92706 CALLAGHAN, BLAIR D
003-072-15	317 E SANTA CLARA A\	SANTA ANA	92706 MEYER, ALAN D
003-072-16	315 E SANTA CLARA A\	SANTA ANA	92706 REES HILL, JENNIFER LOUISE
003-072-17	309 E SANTA CLARA A\	SANTA ANA	92706 SKINNER, GREGORY
003-072-18	312 EDGEWOOD RD	SANTA ANA	92706 RODRIGUEZ, ALEX G
003-072-19	2429 N SPURGEON ST	SANTA ANA	92706 AGUILAR, GABINO BARTHOLOMEW
003-072-20	2421 N SPURGEON ST	SANTA ANA	92706 TITTERUD, MELANIE K
003-072-21	2415 N SPURGEON ST	SANTA ANA	92706 MEDINA, ADALIGZA
003-072-22	2411 N SPURGEON ST	SANTA ANA	92706 CRIBB, DONAL
003-072-23	2407 N SPURGEON ST	SANTA ANA	92706 KEMPHEFNER, VALERIE M
003-072-24	2403 N SPURGEON ST	SANTA ANA	92706 SANCHEZ, EFRAIN
003-072-25	2349 N SPURGEON ST	SANTA ANA	92706 POCKETT, DAVID LOUIS
003-072-26	2345 N SPURGEON ST	SANTA ANA	92706 DORMING FAMILY LTD PTNSHP
003-072-27	2333 N SPURGEON ST	SANTA ANA	92706 SAVALA, ROBERT A
003-072-28	2329 N SPURGEON ST	SANTA ANA	92706 TINKHAM, MARY ANN
003-072-29	2327 N SPURGEON ST	SANTA ANA	92706 CANTOR, JERROLD
003-072-31	2313 N SPURGEON ST	SANTA ANA	92706 ALEXANDER MC MAHAN C JR TR
003-072-32	2309 N SPURGEON ST	SANTA ANA	92706 PEDROZA, ARTURO
003-072-33	303 E SANTA CLARA A\	SANTA ANA	92706 ROBINSON, IVETTE M
003-072-34	316 EDGEWOOD RD	SANTA ANA	92706 HAY, HOWARD CLINTON
003-072-35	2430 FRENCH ST	SANTA ANA	92706 COX, STEVEN J
003-072-36	2426 FRENCH ST	SANTA ANA	92706 FREYTAG, FRANK DAVID
003-072-37	2321 N SPURGEON ST	SANTA ANA	92706 BOYER, MICHAEL
003-072-38	2319 N SPURGEON ST	SANTA ANA	92706 GARCIA, LIZEHTE
396-405-25	2602 LINCOLN AVE	SANTA ANA	92706 AGUILAR, DOLORES M
396-405-26	1017 VIRGINIA AVE	SANTA ANA	92706 HANCOCK LARRY D JR & VICTORIA E
396-405-27	1009 VIRGINIA AVE	SANTA ANA	92706 MORLOK, LAURA MARILYN
396-405-28	1001 VIRGINIA AVE	SANTA ANA	92706 ASTRAN, MARIAN
396-405-29	925 VIRGINIA AVE	SANTA ANA	92706 ROY, WILLIAM
396-405-30	921 VIRGINIA AVE	SANTA ANA	92706 MAHI, MICHAEL R
396-405-31	917 VIRGINIA AVE	SANTA ANA	92706 HERNANDEZ, ANTONIO
396-405-32	913 VIRGINIA AVE	SANTA ANA	92706 NIH, BRYAN M

396-405-33	909 VIRGINIA AVE	SANTA ANA	92706 FORBES, FRED R
396-405-34	905 VIRGINIA AVE	SANTA ANA	92706 TO, LETRANG THI
396-405-35	901 VIRGINIA AVE	SANTA ANA	92706 KING, HERMAN C
396-405-36	902 VIRGINIA AVE	SANTA ANA	92706 TREJO, NORA
396-405-37	906 VIRGINIA AVE	SANTA ANA	92706 ROSENKRANZ, DAVID
396-405-38	910 VIRGINIA AVE	SANTA ANA	92706 FIGUEROA, SALOMON
396-405-39	914 VIRGINIA AVE	SANTA ANA	92706 NORMAN, WILLIAM D
396-405-40	918 VIRGINIA AVE	SANTA ANA	92706 YARBOROUGH, FREDERICA
396-405-41	922 VIRGINIA AVE	SANTA ANA	92706 RODRIGUEZ, ESTEBAN A
396-405-42	926 VIRGINIA AVE	SANTA ANA	92706 GAMA, GILBERTO
396-405-43	1002 VIRGINIA AVE	SANTA ANA	92706 CASTORENA, CONSTANTINO VENEGAS
396-405-44	1008 VIRGINIA AVE	SANTA ANA	92706 FRANSSEN, PILAR M
396-405-45	1018 VIRGINIA AVE	SANTA ANA	92706 GONZALEZ, MARTIN LAMAS
396-405-46	2534 LINCOLN AVE	SANTA ANA	92706 LOPEZ, MARCELO
396-405-48	2551 SANTIAGO ST	SANTA ANA	92706 ANTHONY, ERIC MARK
396-411-02	2645 SANTIAGO ST	SANTA ANA	92706 FOSTER, JEFFREY L
396-411-03	2641 SANTIAGO ST	SANTA ANA	92706 HARRINGTON, DON P
396-411-04	2633 SANTIAGO ST	SANTA ANA	92706 BEDOLLA, JUAN CARLOS
396-411-05	2636 JESSEE DR	SANTA ANA	92705 SANDERS, SHERYL L
396-411-06	2640 JESSEE DR	SANTA ANA	92705 CALDWELL, STUART T
396-411-07	2637 JESSEE DR	SANTA ANA	92705 PAXTON, KYLE A
396-411-08	2640 OAKMONT AVE	SANTA ANA	92705 LAURELES, RENE GARCIA
396-411-09	2646 OAKMONT AVE	SANTA ANA	92705 CURRAN, BRAD E
396-411-10	2652 OAKMONT AVE	SANTA ANA	92705 ONTIVEROS, JEANE ANDREA
396-411-11	2658 OAKMONT AVE	SANTA ANA	92705 ROJAS, NELIDA F
396-411-12	806 CLEMENSEN AVE	SANTA ANA	92705 RICHMOND, JUAN ALEJANDRO GONZALEZ
396-411-13	802 CLEMENSEN AVE	SANTA ANA	92705 RAMOS, ROBBIE L
396-411-14	801 CLEMENSEN AVE	SANTA ANA	92705 LOPEZ, JOE R
396-411-15	805 CLEMENSEN AVE	SANTA ANA	92705 GRANILLO, LILLIAN
396-411-16	809 CLEMENSEN AVE	SANTA ANA	92705 REYNOSO, RAFAEL
396-411-17	815 CLEMENSEN AVE	SANTA ANA	92705 SLATON, DAVID G
396-411-18	819 CLEMENSEN AVE	SANTA ANA	92705 CORREA, MARK C
396-411-19	825 CLEMENSEN AVE	SANTA ANA	92705 TIRITILLI, GERALD A
396-411-20	829 CLEMENSEN AVE	SANTA ANA	92705 VAN ROSSUM, CATHERINE GERARDA
396-411-21	835 CLEMENSEN AVE	SANTA ANA	92705 PITTMAN, JAMES S
396-411-22	841 CLEMENSEN AVE	SANTA ANA	92705 OJEDA, EVELYN P
396-411-23	903 CLEMENSEN AVE	SANTA ANA	92705 LANDMON, NATHAN
396-411-24	907 CLEMENSEN AVE	SANTA ANA	92705 COLLINS, LAURA MICHELE
396-411-25	913 CLEMENSEN AVE	SANTA ANA	92705 ZHAO, XIN
396-411-26	917 CLEMENSEN AVE	SANTA ANA	92705 CRUZ, GUADALUPE
396-411-27	923 CLEMENSEN AVE	SANTA ANA	92705 FRANKLIN, MATTHEW A
396-411-28	929 CLEMENSEN AVE	SANTA ANA	92705 GUILLEN, ORLANDO
396-411-29	933 CLEMENSEN AVE	SANTA ANA	92705 MOORHOUSE, SCOTT MICHAEL
396-411-30	2727 LARCHMONT AVI	SANTA ANA	92705 KORTHUIS, PATRICK
396-411-31	2721 LARCHMONT AVI	SANTA ANA	92705 HAMMOND, ROBERT MORRIS
396-411-32	2717 LARCHMONT AVI	SANTA ANA	92705 TO, THERESE LETHU
396-411-33	2713 LARCHMONT AVI	SANTA ANA	92705 NAVARRETTE, PABLO
396-411-34	2707 LARCHMONT AVI	SANTA ANA	92705 ESPARZA, GERARDO
396-411-35	2703 LARCHMONT AVI	SANTA ANA	92705 MARTIN TAYLOR DANIEL II
396-411-36	2657 LARCHMONT AVI	SANTA ANA	92705 BURNS, WILLIAM G
396-411-37	2653 LARCHMONT AVI	SANTA ANA	92705 CAZARES, JESUS ORTEGA
396-411-38	2649 LARCHMONT AVI	SANTA ANA	92705 GARCIA, JAY C
396-411-39	2643 LARCHMONT AVI	SANTA ANA	92705 MOORE, MICHAEL G
396-412-01	826 CLEMENSEN AVE	SANTA ANA	92705 MALLARI, ANNA C P
396-412-02	832 CLEMENSEN AVE	SANTA ANA	92705 MC CLELLAN, AARON
396-412-03	836 CLEMENSEN AVE	SANTA ANA	92705 LOPEZ, MARK P
396-412-04	904 CLEMENSEN AVE	SANTA ANA	92705 MEREDITH, JAMES E
396-412-05	908 CLEMENSEN AVE	SANTA ANA	92705 MADDEN, RYAN P
396-412-06	914 CLEMENSEN AVE	SANTA ANA	92705 MADRIGAL, JUAN LUIS
396-412-07	920 CLEMENSEN AVE	SANTA ANA	92705 WILKSEN, GILBERT

396-412-08	926 CLEMENSEN AVE	SANTA ANA	92705 KETHLEY, WAYNE B
396-412-09	2718 LARCHMONT AVI	SANTA ANA	92705 VALLE, FERNANDO
396-412-10	2712 LARCHMONT AVI	SANTA ANA	92705 ERHARD, MIKE
396-412-11	2708 LARCHMONT AVI	SANTA ANA	92705 JOHNSON, NORMAN D
396-412-12	2702 LARCHMONT AVI	SANTA ANA	92705 SANCHEZ, NICELIO
396-412-13	2656 LARCHMONT AVI	SANTA ANA	92705 WINTERS, MATTHEW
396-412-14	2650 LARCHMONT AVI	SANTA ANA	92705 PROPST, LAURA L
396-412-15	2646 LARCHMONT AVI	SANTA ANA	92705 CRITTENDEN, ROBERT J
396-412-16	2640 LARCHMONT AVI	SANTA ANA	92705 FRANCO, RAFAEL R
396-412-17	2639 FAIRMONT AVE	SANTA ANA	92705 FRANCO, MIGUEL
396-412-18	2645 FAIRMONT AVE	SANTA ANA	92705 MONTERROSA, ELMER A
396-412-19	2651 FAIRMONT AVE	SANTA ANA	92705 HUEBNER, ROBERT S
396-412-20	2655 FAIRMONT AVE	SANTA ANA	92705 PRIVETT, CAROL L
396-412-21	933 E JONQUIL RD	SANTA ANA	92705 NELSON, CHARLES W
396-412-22	929 E JONQUIL RD	SANTA ANA	92705 GOMEZ, JOHN A
396-412-23	923 E JONQUIL RD	SANTA ANA	92705 ARP, MICHAEL
396-412-24	919 E JONQUIL RD	SANTA ANA	92705 GALLARDO, JANICE R
396-412-25	913 E JONQUIL RD	SANTA ANA	92705 MAAG, PAUL C
396-412-26	907 E JONQUIL RD	SANTA ANA	92705 GONZALEZ, SOLEDAD
396-412-27	903 E JONQUIL RD	SANTA ANA	92705 MAYNARD, JAMES THOMAS
396-413-01	2639 OAKMONT AVE	SANTA ANA	92705 MCDONALD, CORINNE L
396-413-02	908 E JONQUIL RD	SANTA ANA	92705 CLACKEN, BARRATT DANE
396-413-03	916 E JONQUIL RD	SANTA ANA	92705 KIM, KYUNG RYUL
396-413-04	922 E JONQUIL RD	SANTA ANA	92705 NGUYEN, KEITH H
396-413-05	2638 FAIRMONT AVE	SANTA ANA	92705 ESTRADA, FRANCISCO
396-421-01	2552 VALENCIA ST	SANTA ANA	92706 GRIFFIN, PETER
396-421-02	2546 VALENCIA ST	SANTA ANA	92706 GRIFFIN, PETER
396-421-03	2546 VALENCIA ST	SANTA ANA	92706 REYNA, MAGDALENA
396-421-04	2540 VALENCIA ST	SANTA ANA	92706 BURROUGHS, SUSAN M
396-421-05	2536 VALENCIA ST	SANTA ANA	92706 HELVIG, DALE A
396-421-06	2536 VALENCIA ST	SANTA ANA	92706 HELVIG, DALE A
396-421-08	2526 VALENCIA ST	SANTA ANA	92706 GRADY, SCOTT
396-421-09	2524 VALENCIA ST	SANTA ANA	92706 BOBO JR, DONALD E
396-421-10	2520 VALENCIA ST	SANTA ANA	92706 BOBO JR, DONALD E
396-421-11	2510 VALENCIA ST	SANTA ANA	92706 SCHNABEL, MARILYN J
396-421-13	405 EDGEWOOD RD	SANTA ANA	92706 MANDERFELD, JOHN
396-421-14	409 EDGEWOOD RD	SANTA ANA	92706 BOWERS, KATHERINE ANN
396-421-15	411 EDGEWOOD RD	SANTA ANA	92706 WARD, CORNELIUS N
396-421-16	2502 VALENCIA ST	SANTA ANA	92706 KELLER, JOYCE M
396-421-17	2530 VALENCIA ST	SANTA ANA	92706 LOPEZ, ESTHER
396-422-01	2545 VALENCIA ST	SANTA ANA	92706 BURROUGHS, SUSAN M
396-422-02	2535 VALENCIA ST	SANTA ANA	92706 EATON, BRYANT
396-422-03	2529 VALENCIA ST	SANTA ANA	92706 JIMENEZ, ZETULIO
396-422-04	2523 VALENCIA ST	SANTA ANA	92706 BUCK, CAROL A
396-422-05	2519 VALENCIA ST	SANTA ANA	92706 WAITE, SANDRA J
396-422-06	2515 VALENCIA ST	SANTA ANA	92706 WARDINSKI, STEVEN L
396-422-07	2509 VALENCIA ST	SANTA ANA	92706 BOWYER, BARRY R
396-422-08	2503 VALENCIA ST	SANTA ANA	92706 LEAL, FERMIN
396-422-09	2502 POINSETTIA ST	SANTA ANA	92706 TRICE, JILL
396-422-10	2506 POINSETTIA ST	SANTA ANA	92706 VALDEZ, JOSE
396-422-11	2510 POINSETTIA ST	SANTA ANA	92706 MCCLOSKEY II, STEVEN W
396-422-12	2514 POINSETTIA ST	SANTA ANA	92706 ROWENHORST EARL E TR
396-422-13	2518 POINSETTIA ST	SANTA ANA	92706 KILGORE, DAVID B
396-422-14	2522 POINSETTIA ST	SANTA ANA	92706 WOOD, LEWIS R
396-422-15	2526 POINSETTIA ST	SANTA ANA	92706 JOHNSON, MARY JANE
396-422-16	2530 POINSETTIA ST	SANTA ANA	92706 JENNINGS, JARRED
396-422-17	2534 POINSETTIA ST	SANTA ANA	92706 GESSNER, JOHN A
396-422-18	2535 POINSETTIA ST	SANTA ANA	92706 GILBERT, THOMAS A
396-422-19	2531 POINSETTIA ST	SANTA ANA	92706 MONROE, ERIC J
396-422-20	2527 POINSETTIA ST	SANTA ANA	92706 CISNEROS, AMBER

396-422-21	2523 POINSETTIA ST	SANTA ANA	92706 KARNES, ISABELLE C
396-422-22	2519 POINSETTIA ST	SANTA ANA	92706 PARRETT, DENNIS D
396-422-23	2515 POINSETTIA ST	SANTA ANA	92706 OHANESIAN, J TREME P
396-422-24	2511 POINSETTIA ST	SANTA ANA	92706 WARKENTIN, GREGORY P
396-422-25	2507 POINSETTIA ST	SANTA ANA	92706 RODRIGUEZ, MIGUEL ROBLES
396-422-26	2503 POINSETTIA ST	SANTA ANA	92706 TRASK, SCOTT
396-422-27	2502 SANTIAGO ST	SANTA ANA	92706 JOHNSON, TIMOTHY C
396-422-28	2510 SANTIAGO ST	SANTA ANA	92706 ASTOR, STEPHENY G
396-422-29	2518 SANTIAGO ST	SANTA ANA	92706 RAPHAEL, KATHLEEN M
396-422-30	2522 SANTIAGO ST	SANTA ANA	92706 SERRANO, HECTOR
396-422-31	2526 SANTIAGO ST	SANTA ANA	92706 BLACK, JEFFREY M
396-422-32	2530 SANTIAGO ST	SANTA ANA	92706 MAIETTA, MARK
396-422-33	2534 SANTIAGO ST	SANTA ANA	92706 MCGURRELL, MARY EILEEN
396-422-34	2540 SANTIAGO ST	SANTA ANA	92706 SMITH, GERALD JAMES
396-422-35	2544 SANTIAGO ST	SANTA ANA	92706 CARR LARRY S JR & CAROLYN J
396-422-36	2548 SANTIAGO ST	SANTA ANA	92706 LUJAN, MICHELE
396-431-01	406 VIRGINIA AVE	SANTA ANA	92706 BURKE, LINDA R
396-431-02	2547 FRENCH ST	SANTA ANA	92706 DEERING, ELIZABETH ANN
396-431-03	2543 FRENCH ST	SANTA ANA	92706 GABRYCH, SUSAN E
396-431-04	2539 FRENCH ST	SANTA ANA	92706 HART STREET HOUSE LLC
396-431-05	2535 FRENCH ST	SANTA ANA	92706 LINDSAY, DAVID JASON
396-431-06	2531 FRENCH ST	SANTA ANA	92706 HART STREET HOUSE LLC
396-431-08	2523 FRENCH ST	SANTA ANA	92706 BRYANT, CURTIS L
396-431-10	2515 FRENCH ST	SANTA ANA	92706 LEE, DAVID MICHAEL
396-431-11	2509 FRENCH ST	SANTA ANA	92706 BRAZIL, GEORGE W
396-431-12	2505 FRENCH ST	SANTA ANA	92706 MESSERALL, PAUL L
396-431-13	2501 FRENCH ST	SANTA ANA	92706 WASHBURN, LAWRENCE ROBERT
396-431-16	2527 FRENCH ST	SANTA ANA	92706 LOPEZ, CARLOS J
396-431-17	2519 FRENCH ST	SANTA ANA	92706 MERCADO, MARILYN E
396-432-01	2544 FRENCH ST	SANTA ANA	92706 MARTINEZ, JEFFREY
396-432-02	2540 FRENCH ST	SANTA ANA	92706 KIEFER, WAYNE ROBERT
396-432-03	2536 FRENCH ST	SANTA ANA	92706 JENNINGS, ALEXANDER M
396-432-04	2532 FRENCH ST	SANTA ANA	92706 COLEMAN, JAMES W
396-432-05	2528 FRENCH ST	SANTA ANA	92706 MOORE, JAYMES G
396-432-06	2524 FRENCH ST	SANTA ANA	92706 MEZA-LEON, SONIA S
396-432-07	2518 FRENCH ST	SANTA ANA	92706 ORTIZ, CARLOS
396-432-08	2514 FRENCH ST	SANTA ANA	92706 O CONNELL, GERALD F
396-432-09	2510 FRENCH ST	SANTA ANA	92706 WISHER, AMBER C
396-432-10	2506 FRENCH ST	SANTA ANA	92706 ARCEO, OLIVER A
396-432-11	2502 FRENCH ST	SANTA ANA	92706 FLORES JR, RUBEN SHAWN
396-432-12	2501 N SPURGEON ST	SANTA ANA	92706 FOLSOM, GARY J
396-432-13	2505 N SPURGEON ST	SANTA ANA	92706 CALIGIURI ROCKLAND KENT JR & LISA J
396-432-14	2509 N SPURGEON ST	SANTA ANA	92706 MUELLER, TIMOTHY
396-432-15	2517 N SPURGEON ST	SANTA ANA	92706 OSBORNE, GREGORY
396-432-16	2519 N SPURGEON ST	SANTA ANA	92706 DALTON, CHAUNCEY W
396-432-17	2521 N SPURGEON ST	SANTA ANA	92706 BABAKHANI, EDWIN
396-432-18	2527 N SPURGEON ST	SANTA ANA	92706 LEONHARDT, DREW W
396-432-19	2531 N SPURGEON ST	SANTA ANA	92706 GREER, MICHAEL J
396-432-20	2535 N SPURGEON ST	SANTA ANA	92706 FOUCAULT, CLAUDE C
396-432-21	304 VIRGINIA AVE	SANTA ANA	92706 BALL, GERALD PITTS
396-433-01	405 VIRGINIA AVE	SANTA ANA	92706 MADUENA, JOSE J
396-433-02	325 VIRGINIA AVE	SANTA ANA	92706 KNOERNSCHILD, BRADLEY M
396-433-03	321 VIRGINIA AVE	SANTA ANA	92706 ALLEN, HORACE EUGENE
396-433-04	315 VIRGINIA AVE	SANTA ANA	92706 JOHNSON, LARRY D
396-433-05	309 VIRGINIA AVE	SANTA ANA	92706 SPOTO, JAMES P
396-433-06	305 VIRGINIA AVE	SANTA ANA	92706 GUILLEN, PEDRO
396-433-07	301 VIRGINIA AVE	SANTA ANA	92706 HARTMANN, JON P
396-433-08	2542 N SPURGEON ST	SANTA ANA	92706 SANCHEZ, SAMUEL
396-433-09	2538 N SPURGEON ST	SANTA ANA	92706 ARRIOLA, RAUL SERRANO
396-433-10	2534 N SPURGEON ST	SANTA ANA	92706 CHAPMAN, JUSTIN PIERCE

396-433-11	2530 N SPURGEON ST	SANTA ANA	92706 RICONDO, THOMAS
396-433-12	2526 N SPURGEON ST	SANTA ANA	92706 PURRINGTON, JORDAN I
396-433-13	2522 N SPURGEON ST	SANTA ANA	92706 GALLARDO, ROBERT J
396-433-14	2518 N SPURGEON ST	SANTA ANA	92706 TANEGA SERAFIN JR
396-433-15	2514 N SPURGEON ST	SANTA ANA	92706 ZAVALA, DAVE
396-433-16	2510 N SPURGEON ST	SANTA ANA	92706 ISBELL, JAMES L
396-433-17	2506 N SPURGEON ST	SANTA ANA	92706 BULT, LORETTA M
396-433-18	2502 N SPURGEON ST	SANTA ANA	92706 TOVAR, MARIO C
003-081-01	2426 SANTIAGO ST	SANTA ANA	92706 WEBER, ANDREW D
003-081-02	2422 SANTIAGO ST	SANTA ANA	92706 FULLER, ALAN H
003-081-03	2420 SANTIAGO ST	SANTA ANA	92706 JONES, CATHERINE C
003-081-04	2416 SANTIAGO ST	SANTA ANA	92706 ROMO, PEDRO
003-081-05	2412 SANTIAGO ST	SANTA ANA	92706 PAULL, DONALD GREGORY
003-081-06	2408 SANTIAGO ST	SANTA ANA	92706 NASITKA, DANIEL A
003-081-07	2404 SANTIAGO ST	SANTA ANA	92706 HEWITT, MICHAEL P
003-081-08	2402 SANTIAGO ST	SANTA ANA	92706 COX, JOSEPH P
003-081-09	2342 SANTIAGO ST	SANTA ANA	92706 SIEMSEN, KENNETH EDWARD
003-081-10	2336 SANTIAGO ST	SANTA ANA	92706 RUIZ, ISBAELLE
003-081-11	2328 SANTIAGO ST	SANTA ANA	92706 SECONDO, JOHN S
003-081-12	2429 POINSETTIA ST	SANTA ANA	92706 PARK, CAROL ANN
003-081-13	2425 POINSETTIA ST	SANTA ANA	92706 ALLISON, GAIL SCHNYDER
003-081-14	2421 POINSETTIA ST	SANTA ANA	92706 CALL, HENRY M
003-081-15	2415 POINSETTIA ST	SANTA ANA	92706 DEVOS, RICHARD AUGUST
003-081-16	2411 POINSETTIA ST	SANTA ANA	92706 GRANGE, SCOTT R
003-081-17	2407 POINSETTIA ST	SANTA ANA	92706 SPIVEY, LAURA
003-081-18	2403 POINSETTIA ST	SANTA ANA	92706 WILSON, BRIAN F
003-081-19	611 E SANTA CLARA A\	SANTA ANA	92706 ELIAS, NOAH J
003-081-20	601 E SANTA CLARA A\	SANTA ANA	92706 HIROTA, DORIS A
003-081-22	2308 SANTIAGO ST	SANTA ANA	92706 HUMPHREY, GERALDINE
003-081-23	2302 SANTIAGO ST	SANTA ANA	92706 PALAS, ALLYSON N
003-081-25	2312 SANTIAGO ST	SANTA ANA	92706 HAHN, RYAN C
003-081-27	2320 SANTIAGO ST	SANTA ANA	92706 NEAL, MICHAEL E
003-081-28	2315 POINSETTIA ST	SANTA ANA	92706 BYE, MARGARET B
003-081-29	2319 POINSETTIA ST	SANTA ANA	92706 FOX, ANN
003-081-30	2321 POINSETTIA ST	SANTA ANA	92706 SCHOENBACHLER, MATTHEW J
003-081-31	2327 POINSETTIA ST	SANTA ANA	92706 ROACH, DAVID J
003-081-32	2331 POINSETTIA ST	SANTA ANA	92706 MAIZE, PAUL
003-081-33	2335 POINSETTIA ST	SANTA ANA	92706 SIDELL, HEATHER L
003-081-34	2339 POINSETTIA ST	SANTA ANA	92706 MINNING, CAROL JO LENTZ
003-082-03	2418 POINSETTIA ST	SANTA ANA	92706 DRESSER, JEFFREY E
003-082-04	2416 POINSETTIA ST	SANTA ANA	92706 YI, ROBERT
003-082-05	2412 POINSETTIA ST	SANTA ANA	92706 TAKAYANAGI SANKEN USA INC
003-082-06	2408 POINSETTIA ST	SANTA ANA	92706 MOREFIELD, LARRY
003-082-07	2404 POINSETTIA ST	SANTA ANA	92706 UNDERHILL, BRIAN K
003-082-08	2427 VALENCIA ST	SANTA ANA	92706 POWERS, GARY ALAN
003-082-09	2425 VALENCIA ST	SANTA ANA	92706 CANADA, KATHERINE
003-082-10	2421 VALENCIA ST	SANTA ANA	92706 MATTHEWS, VIRGINIA L
003-082-11	2417 VALENCIA ST	SANTA ANA	92706 ZHU, HAO TIAN
003-082-12	2411 VALENCIA ST	SANTA ANA	92706 BARR, CHRISTOPHER P
003-082-13	2409 VALENCIA ST	SANTA ANA	92706 MOREHEAD, CATHY M
003-082-15	521 E SANTA CLARA A\	SANTA ANA	92706 STEVENS JOHN F JR TR J F JR STEVENS TR
003-082-16	513 E SANTA CLARA A\	SANTA ANA	92706 DIAL, GARY W
003-082-17	509 E SANTA CLARA A\	SANTA ANA	92706 BROUILLETTE, GRACE C
003-082-18	505 E SANTA CLARA A\	SANTA ANA	92706 GEESMAN, RANDY R
003-082-21	2339 VALENCIA ST	SANTA ANA	92706 KESSENICK, CAROL L
003-082-22	2335 VALENCIA ST	SANTA ANA	92706 FLORES, KRISTEN COLLEEN
003-082-23	2331 VALENCIA ST	SANTA ANA	92706 MEYER, MARYANN
003-082-24	2327 VALENCIA ST	SANTA ANA	92706 INIGO, RALPH R
003-082-25	2323 VALENCIA ST	SANTA ANA	92706 BONNETT, WILLIAM C
003-082-26	2319 VALENCIA ST	SANTA ANA	92706 SHARAR, ALLEN B

003-082-27	2315 VALENCIA ST	SANTA ANA	92706 LECHUGA GERARDO S JR
003-082-28	2311 VALENCIA ST	SANTA ANA	92706 URSUA, MIGUEL
003-082-30	501 E SANTA CLARA A\	SANTA ANA	92706 WILLIS, AARON DANIEL
003-082-31	2405 VALENCIA ST	SANTA ANA	92706 VELASCO, DIEGO M
003-082-32	2310 POINSETTIA ST	SANTA ANA	92706 DEPER SIS, PAUL MICHAEL
003-082-33	2314 POINSETTIA ST	SANTA ANA	92706 HARRIS, ANDREA LEE
003-082-34	2318 POINSETTIA ST	SANTA ANA	92706 LESTER, JO PRISCILLA
003-082-35	2322 POINSETTIA ST	SANTA ANA	92706 KALTER, MICHAEL P
003-082-36	2326 POINSETTIA ST	SANTA ANA	92706 PEREZ, LINDA G
003-082-37	2330 POINSETTIA ST	SANTA ANA	92706 MOUET, GERARDO
003-082-38	2336 POINSETTIA ST	SANTA ANA	92706 DENTE, DONNA A
003-082-39	2340 POINSETTIA ST	SANTA ANA	92706 DE LA TORRE, OSVALDO
003-082-40	2422 POINSETTIA ST	SANTA ANA	92706 NORTH CUTT, JONDE
003-091-01	2422 FAIRMONT AVE	SANTA ANA	92706 WALLACE, JAMES
003-091-02	2420 FAIRMONT AVE	SANTA ANA	92706 RAINBOLT, MOMOKO FUJIKAWA
003-091-03	2418 FAIRMONT AVE	SANTA ANA	92706 1999 RICHARD H SUESS & GLORIA I SUESS RE
003-091-04	2414 FAIRMONT AVE	SANTA ANA	92706 MARTELLO, NELIDA
003-091-05	2410 FAIRMONT AVE	SANTA ANA	92706 SORNSTEIN, WILLIAM
003-091-06	2408 FAIRMONT AVE	SANTA ANA	92706 CECIL, PATRICK
003-091-07	2404 FAIRMONT AVE	SANTA ANA	92706 SMITH, MATTHEW D
003-091-08	2344 FAIRMONT AVE	SANTA ANA	92706 THOMPSON LINDSAY L A III TR THOMPSON FAMILY REVOC
003-091-09	2340 FAIRMONT AVE	SANTA ANA	92706 MILETTE, WENDY
003-091-10	2336 FAIRMONT AVE	SANTA ANA	92706 FLORES, JOSE A
003-091-13	2322 FAIRMONT AVE	SANTA ANA	92706 DUTTON, JEREMY
003-091-15	2310 FAIRMONT AVE	SANTA ANA	92706 SHAFFER, JASON A
003-091-16	819 E SANTA CLARA A\	SANTA ANA	92706 TRISH, STEVEN M
003-091-17	2427 OAKMONT AVE	SANTA ANA	92706 ARSENIAN, DAVID A
003-091-18	2421 OAKMONT AVE	SANTA ANA	92706 GABELMAN, ALEXANDRIA J
003-091-19	2417 OAKMONT AVE	SANTA ANA	92706 BLAU, SUZANNE
003-091-20	2411 OAKMONT AVE	SANTA ANA	92706 GUILLEN, JOSE L
003-091-21	2407 OAKMONT AVE	SANTA ANA	92706 FINN, BIANA C
003-091-22	2403 OAKMONT AVE	SANTA ANA	92706 GUADERRAMA, ROLAND
003-091-23	2343 OAKMONT AVE	SANTA ANA	92706 STRAND, MICHAEL T
003-091-24	2339 OAKMONT AVE	SANTA ANA	92706 KAZANJY, ROBERT PRICE
003-091-25	2335 OAKMONT AVE	SANTA ANA	92706 CANDY, GILES BENJAMIN BODEN
003-091-27	2323 OAKMONT AVE	SANTA ANA	92706 LYPPS, MARYLYN E
003-091-28	2321 OAKMONT AVE	SANTA ANA	92706 KELLER, RUTH A
003-091-29	2315 OAKMONT AVE	SANTA ANA	92706 FRANKLIN, DONALD H
003-091-30	2309 OAKMONT AVE	SANTA ANA	92706 CLEGG, RICHARD D
003-091-31	2301 OAKMONT AVE	SANTA ANA	92706 RENDON, CHRISTINE M
003-091-34	2318 FAIRMONT AVE	SANTA ANA	92706 STRUCK, ANDREW E
003-091-36	2329 OAKMONT AVE	SANTA ANA	92706 YARNELL, BARRY E
003-091-37	2328 FAIRMONT AVE	SANTA ANA	92706 LEE, WILLIAM JR
003-091-38	2332 FAIRMONT AVE	SANTA ANA	92706 DUFFIELD, STEPHEN P
003-092-04	2406 OAKMONT AVE	SANTA ANA	92706 WOOD, MICHAEL D
003-092-05	2402 OAKMONT AVE	SANTA ANA	92706 FRADKIN, JOHN A
003-092-06	2344 OAKMONT AVE	SANTA ANA	92706 RHODIUM START MANAGEMENT LLC TR THE SENDERO DELBIEN TR
003-092-07	2340 OAKMONT AVE	SANTA ANA	92706 EVANS, GARETH D
003-092-09	2324 OAKMONT AVE	SANTA ANA	92706 NGUYEN, HUNG BA
003-092-10	2320 OAKMONT AVE	SANTA ANA	92706 CASTRO, CEDIE
003-092-11	2314 OAKMONT AVE	SANTA ANA	92706 SCHINNERER, BARBARA ELAINE
003-092-14	2415 SANTIAGO ST	SANTA ANA	92706 ECHAVES, JOSEPH A
003-092-16	2403 SANTIAGO ST	SANTA ANA	92706 SMITH, DAVID M
003-092-17	2401 SANTIAGO ST	SANTA ANA	92706 CONLOGUE, COURTNEY TAYLOR
003-092-18	2337 SANTIAGO ST	SANTA ANA	92706 BADGER, JASON
003-092-19	2335 SANTIAGO ST	SANTA ANA	92706 SMITH, CHRISTOPHER H
003-092-20	2329 SANTIAGO ST	SANTA ANA	92706 MA, MICHAEL
003-092-21	2323 SANTIAGO ST	SANTA ANA	92706 COLEMAN, JEFFREY R
003-092-22	2317 SANTIAGO ST	SANTA ANA	92706 KELLY, CARLE
003-092-23	2315 SANTIAGO ST	SANTA ANA	92706 THORNE, ANDREW C

003-092-24	2311 SANTIAGO ST	SANTA ANA	92706 HELVIG, MICHELLE
003-092-25	2303 SANTIAGO ST	SANTA ANA	92706 POTERAJ, BRIAN
003-092-27	2336 OAKMONT AVE	SANTA ANA	92706 RICHARDSON, MIA KY
003-092-28	2332 OAKMONT AVE	SANTA ANA	92706 RICHARDSON, JANET S
003-092-30	701 E SANTA CLARA A	SANTA ANA	92706 HERRERA, VERONICA M
003-092-31	2411 SANTIAGO ST	SANTA ANA	92706 SALMANS, DEAN
003-092-32	2407 SANTIAGO ST	SANTA ANA	92706 ANGELL, MARK L
003-092-33	2302 OAKMONT AVE	SANTA ANA	92706 ARMEN, ROBERT C
003-092-34	2308 OAKMONT AVE	SANTA ANA	92706 BICE, MARY E
003-092-35	2427 SANTIAGO ST	SANTA ANA	92706 BIRKHOLZ, JANEEN JANE
003-092-37	2412 OAKMONT AVE	SANTA ANA	92706 ARMEN, MARK J
003-092-39	2419 SANTIAGO ST	SANTA ANA	92706 HILL, PENNY IRWIN
003-092-40	2424 OAKMONT AVE	SANTA ANA	92706 BRICKEN, GORDON
003-092-43	2428 OAKMONT AVE	SANTA ANA	92706 PETTY, DEANNA M
003-100-02	2431 FAIRMONT AVE	SANTA ANA	92706 KO, SEOK HYEON
003-100-03	2423 FAIRMONT AVE	SANTA ANA	92706 ROACH, MELODY D
003-100-04	2419 FAIRMONT AVE	SANTA ANA	92706 RIOS, JENNY
003-100-05	2415 FAIRMONT AVE	SANTA ANA	92706 CRAWFORD, SUSAN M
003-100-06	2411 FAIRMONT AVE	SANTA ANA	92706 BENITEZ, JESSE
003-100-07	2405 FAIRMONT AVE	SANTA ANA	92706 ROBLES, FRANK
003-100-08	2401 FAIRMONT AVE	SANTA ANA	92706 FAZIOLA, LAWRENCE
003-100-09	2339 FAIRMONT AVE	SANTA ANA	92706 SANCHEZ, FRANCISCO
003-100-10	2329 FAIRMONT AVE	SANTA ANA	92706 WATERSON, COLIN A
003-100-11	2323 FAIRMONT AVE	SANTA ANA	92706 GUILLEN, NILA GONZALEZ
003-100-12	2319 FAIRMONT AVE	SANTA ANA	92706 PULTORAK, JOHN F
003-100-13	2315 FAIRMONT AVE	SANTA ANA	92706 STANLEY, ALISON
003-100-14	2309 FAIRMONT AVE	SANTA ANA	92706 KOPYLOW, GEORGE
003-100-15	2301 FAIRMONT AVE	SANTA ANA	92706 BERREY, JASON
003-100-16	919 E SANTA CLARA A\	SANTA ANA	92706 MURILLO, DEANNE M
003-100-17	2306 LARCHMONT AVI	SANTA ANA	92706 SCHICK, STEVEN W
003-100-18	2310 LARCHMONT AVI	SANTA ANA	92706 DOUGHERTY, JEFFREY MICHAEL
003-100-19	2314 LARCHMONT AVI	SANTA ANA	92706 LOPEZ, JESUS ALBERTO
003-100-20	2318 LARCHMONT AVI	SANTA ANA	92706 GOMEZ, MARTIN E
003-100-21	2322 LARCHMONT AVI	SANTA ANA	92706 ZUNIGA, MARGARITA SERRANO
003-100-22	2326 LARCHMONT AVI	SANTA ANA	92706 ROBISON, BARBARA A
003-100-23	2330 LARCHMONT AVI	SANTA ANA	92706 WHALEN, WILLIAM J
003-100-24	2334 LARCHMONT AVI	SANTA ANA	92706 RANDALL, TYLER J
003-100-25	2402 LARCHMONT AVI	SANTA ANA	92706 GARCIA, FREDDY ELORES
003-100-26	2406 LARCHMONT AVI	SANTA ANA	92706 FELTER, MELISSA J
003-100-27	2410 LARCHMONT AVI	SANTA ANA	92706 CHAUDOIN, LLOYD LEON
003-100-28	2414 LARCHMONT AVI	SANTA ANA	92706 NGUYEN, SUSAN
003-100-29	2418 LARCHMONT AVI	SANTA ANA	92706 REED, JAMES WARREN
003-100-30	2422 LARCHMONT AVI	SANTA ANA	92706 YEAW, KAREN L
003-100-31	2426 LARCHMONT AVI	SANTA ANA	92706 MIRANDA, SAUL EOMAN
396-401-01	2631 SANTIAGO ST	SANTA ANA	92706 TOBACK, LEEJANICE
396-401-02	2629 SANTIAGO ST	SANTA ANA	92706 DE, BACH ROBERT
396-401-03	709 E PARK LN	SANTA ANA	92705 PHAM, PETER
396-401-04	2626 JESSEE DR	SANTA ANA	92705 ROA, VERONICA MARY
396-401-05	2630 JESSEE DR	SANTA ANA	92705 LEE, JOSHUA PATRICK
396-402-01	2633 JESSEE DR	SANTA ANA	92705 SIERRA, CARLOS
396-402-02	2629 JESSEE DR	SANTA ANA	92705 MONTOYA, JOHIL MICKEAL
396-402-03	2623 JESSEE DR	SANTA ANA	92705 GARRIDO, EDWIN M
396-402-04	815 E PARK LN	SANTA ANA	92705 STEWART, GAYLE
396-402-05	2630 OAKMONT AVE	SANTA ANA	92705 GUZMAN, EDUARDO
396-402-06	2634 OAKMONT AVE	SANTA ANA	92705 FERENC, BENJAMIN Y
396-403-01	2633 OAKMONT AVE	SANTA ANA	92705 GRANAT, CHARLES ANDREW
396-403-02	903 E PARK LN	SANTA ANA	92705 BUNGE, NORMA J
396-403-03	907 E PARK LN	SANTA ANA	92705 ROSAS, RODOLFO
396-403-04	913 E PARK LN	SANTA ANA	92705 SANCHEZ, ERIK
396-403-05	919 E PARK LN	SANTA ANA	92705 NAPOLES-FLORES, DANIEL

396-403-06	2634 FAIRMONT AVE	SANTA ANA	92705 LOPEZ, PATRICIA
396-404-01	2637 LARCHMONT AVI	SANTA ANA	92705 ZEPEDA, HERNAN
396-404-02	2631 LARCHMONT AVI	SANTA ANA	92705 FLORES, JOHANNA
396-404-03	2625 LARCHMONT AVI	SANTA ANA	92705 SEARS II, ANTONIO J
396-405-01	708 E PARK LN	SANTA ANA	92705 ONEAL, SANDRA
396-405-02	714 E PARK LN	SANTA ANA	92705 TAYLOR, BRUCE M
396-405-03	720 E PARK LN	SANTA ANA	92705 ROSENQUIST, JAMES
396-405-04	726 E PARK LN	SANTA ANA	92705 OSHIRO, GUY H
396-405-05	804 E PARK LN	SANTA ANA	92705 OSMUNDSON, LLOYD A
396-405-06	810 E PARK LN	SANTA ANA	92705 AGUILERA, ANTONIO
396-405-07	816 E PARK LN	SANTA ANA	92705 LAMONDA HERBERT W JR & KATHLEEN M
396-405-08	822 E PARK LN	SANTA ANA	92705 WELCH, JAMES RICHARD
396-405-09	906 E PARK LN	SANTA ANA	92705 PANDY, LIZANDER
396-405-10	912 E PARK LN	SANTA ANA	92705 RAMIREZ, DANIEL
396-405-11	918 E PARK LN	SANTA ANA	92705 RODRIGUEZ, RIGOBERTO
396-405-12	922 E PARK LN	SANTA ANA	92705 CONNOLLY, JONATHAN
396-405-13	926 E PARK LN	SANTA ANA	92705 MCNEIL, JEFFREY ANTON
396-405-14	2619 FAIRMONT AVE	SANTA ANA	92705 MINCHACA, DAVID
396-405-15	2623 FAIRMONT AVE	SANTA ANA	92705 SETTLE, GARY W
396-405-16	2629 FAIRMONT AVE	SANTA ANA	92705 HALL, ROBERT B
396-405-17	2635 FAIRMONT AVE	SANTA ANA	92705 ALCARAZ, PEDRO CERVANTES
396-405-18	2634 LARCHMONT AVI	SANTA ANA	92705 IZOTECO, ALEJANDRO
396-405-19	2630 LARCHMONT AVI	SANTA ANA	92705 ZEPEDA, HERNAN
396-405-20	2624 LARCHMONT AVI	SANTA ANA	92705 HAGEN, MICHAEL
396-405-21	2620 LARCHMONT AVI	SANTA ANA	92705 SWEENEY, JOSEPH ALLEN
396-405-22	1012 E PARK LN	SANTA ANA	92705 ANDERSON, THOMAS DARNELL
396-405-23	1016 E PARK LN	SANTA ANA	92705 BEIRNE, MICHAEL A
396-405-24	1022 E PARK LN	SANTA ANA	92705 TRAN, MAN VAN

2525 Main Street
Santa Ana, California
Sunshine Ordinance - Community Meeting
Meeting Minutes

In compliance with the Sunshine Ordinance, a community meeting was held at the First Congregational Church of Santa Ana, 2555 Santiago Street, Santa Ana, California on April 20, 2022, from 6:00 pm to approximately 7:40 pm.

Representatives from the Developer included:

- Lisa Fjeldstad, Taylor Morrison
- Chris Encheff, Taylor Morrison
- David Kemnitz, Taylor Morrison
- Kimberly Kraft, Taylor Morrison
- Paul Simonds, Curt Pringle & Associates
- Peter Carlson, Carlson Strategic Land Solutions
- Michael Stone, Bassenian Ligoni

Representatives from the City of Santa Ana:

- Ali Pezeshkpour

Representatives of the Community

- Approximately 80 members of the community attended. Appendix A to these minutes include copies of the sign-in sheets. It is possible some attendees did not sign in.

The Sunshine Meeting began with opening remarks and an introduction made by Paul Simonds. The opening remarks introduced the purpose of the meeting and the developer representatives. Concluding the opening remarks, Mr. Simonds introduced Chris Encheff from Taylor Morrison.

Mr. Encheff used a PowerPoint Presentation, a copy of which is included as Appendix B to these minutes, to introduce Taylor Morrison as a homebuilder. Mr. Encheff outlined Taylor Morrison's homebuilding experience and awards. Mr. Encheff discussed the significant differences and benefits between Taylor Morrison's proposal and the prior application. Mr. Encheff also indicated Taylor Morrison has no relation to the prior developer. Mr. Encheff then turned the presentation over to David Kemnitz.

Mr. Kemnitz continued the PowerPoint Presentation (Appendix B) and introduced the proposed site plan; explained access from Main Street; explained perimeter setbacks and retention of existing trees; reviewed the proposed architecture, including the typical size of the dwelling units; highlighted the statistics of the proposed projects, such as 81 townhomes. Mr. Kemnitz concluded his presentation with drone photos taken from the easterly boundary of the property at the exact 50ft setback and elevation of the proposed unit's 2nd and 3rd floor balconies and windows to illustrate the privacy screening the existing trees provide the Spurgeon Street neighbors.

Following Mr. Kemnitz's presentation, members of the audience asked numerous questions. There was no formal question process and names of those asking questions were not provided. Answers to the questions were provided by the Taylor Morrison team. The following provides a general list of the questions asked and the answers provided. The following summary is not a verbatim representation of the questions or the answers. Some questions may have been missed as multiple questions were often asked at the same time. The questions are provided in italics font followed by the answers in standard font.

<i>Does Taylor Morrison own the property? What are the closing dates and contingencies?</i>	No, Taylor Morrison does not own the property. Taylor Morrison is in escrow to purchase the property condition to entitlement approvals.
<i>What is the zoning of the Property?</i>	The property is currently zoned for professional office.
<i>Has the City of Santa Ana checked this project? Is anybody from the City of Santa Ana here?</i>	Yes, the City has seen the project. We have submitted our Development Project application and are conducting tonight's Sunshine Ordinance pursuant to the requirements thereof. Yes, our Case Planner Ali P. is here.
<i>When does Taylor Morrison close on the property?</i>	Closing is conditioned upon entitlement approvals through all applicable appeal periods.
<i>Will Taylor Morrison close on the property before zoning?</i>	No, Taylor Morrison will close once City approvals are obtained and the zoning is changed.
<i>What is the status of the General Plan?</i>	The General Plan was adopted by the City early in the morning (just past midnight) on April 20, 2022.
<i>Is there a bus turnout planned along Main Street?</i>	Undetermined at this time.
<i>When does Council vote on the zone change and when can we fight it?</i>	The project will likely be going before City Council in the Fall.
<i>Are all of the homes 3 stories?</i>	No, there is a mix of 2 & 3 Story homes.
<i>Are there any units that are only 2 stories?</i>	Yes.
<i>Is parking provided on the surface or subterranean?</i>	There is no subterranean parking.
<i>How much will the units sell for?</i>	Likely starting in the \$800's, determined by the market.
<i>Is there only one access?</i>	Yes.
<i>Where is the access located on Main Street?</i>	Access for the project will be taken off Main St. at the existing intersection of Park Santiago.
<i>What provision has been provided for use of the existing access road into the park?</i>	As discussed with City staff, an easement to provide access into the project will be provided by the City, the project will be dedicating approximately 8,000SF of land to be used as future park land.

<i>How will the City be kept whole for allowing access through the park?</i>	See previous question.
<i>Will the driveway entrance to the Discovery parking lot off Main Street be closed?</i>	We do not know at this time, but will consult with our engineer on where the exact driveway is located.
<i>Where / how will Discovery gain access to their parking lot?</i>	This is undetermined at this time.
<i>How did you (Taylor Morrison) come up with 81 units?</i>	This was determined by our chosen product type.
<i>How is handicap access being provided to the Park?</i>	Undetermined at this time. The project is not impacting the City's ability to provide access. Handicap access is provided by the City and is out of the developers control.
<i>Do the units have individual driveways?</i>	No. Each unit is provided with a 2-car direct access garage.
<i>How is providing access over the park allowed under the State grant? Does the State need to approve the access because of the grant?</i>	Per the City, the current plan of easement access will not trigger State approval.
<i>Has the project been in the works for 1.5 years?</i>	No.
<i>Why is Taylor Morrison confident there can be a housing project on this site?</i>	Because we are proposing a significantly less dense project than the last application, that blends into the existing neighborhood better than the last proposal.
<i>What is the density of the project in units per acre?</i>	18-19 du/ac
<i>Is the existing chain link fence located on the southern property line?</i>	We do not know.
<i>What is the expected purchase price of the units?</i>	Likely starting in the \$800's, but will be dictated by the market at the time of opening.
<i>Why would I pay \$800,000 to live there with all of the traffic on Main Street?</i>	We cannot comment on your personal desires, ma'am.
<i>Are the renderings accurate? There is no character to the architecture.</i>	Yes the renderings are accurate. Architecture is preliminary and we are open to suggestion.
<i>Where is extra parking provided for guests?</i>	Yes there are 41 additional parking spaces throughout site.

<i>Will residents be able to park in the guest spaces?</i>	No. Taylor Morrison will be required to process a parking management plan as part of our application for entitlements with the City. Further, we will build into the project's CC&R's that residents must park in their garages.
<i>Are living units stacked above each other?</i>	No.
<i>Where does the 1st story start of the home?</i>	The first story is the garage level. In some cases there is a bedroom or flex space on this level as well.
<i>Is there a community pool?</i>	No.
<i>Comment - Would like something not as packed, more setback. Looks like the property is right up against the park and Main.</i>	Taylor Morrison understands and will revisit elements of the project's design.
<i>Comment - The Taylor Morrison project in Old Town Tustin is very nice and should be considered as a model for this property.</i>	Taylor Morrison provided no response to this comment, as it was not a question.
<i>Comment - A resident said he would be more supportive of single family detached homes.</i>	Taylor Morrison provided no response to this comment, as it was not a question.
<i>What is the height of the units facing Spurgeon? Residents are concerned about privacy.</i>	Approximately 35 ft for the 3 rd story and 25 ft for the 2 nd story. Drone footages were shot at the elevation of both the 2 nd and 3 rd story to show that the existing trees (which will remain in place) block the views into the Spurgeon residents' backyards.
<i>Comment - The setback for the original 2525 Main Street project was 90 feet from the lots along Spurgeon.</i>	Taylor Morrison provided no response to this comment, as it was not a question.
<i>Has the City approved the project?</i>	No. The project has only been submitted to the City for review.
<i>Have the environmental studies been completed?</i>	No. There are additional studies that are underway and others to be determined as necessary by the City.
<i>Comment - The General Plan was approved by the City at 12:36 AM this morning and it provides a blueprint for the City. The General Plan took seven years and millions of dollars to complete. The City could have changed the General Plan designation for this property but didn't. There shouldn't be a request to immediately change the General Plan. The project site should be treated as a gateway to the City and not developed with residential.</i>	Taylor Morrison provided no response to this comment, as it was not a question.

<i>How will access to Discovery Cube parking be provided?</i>	We have no relation to the Discovery Cube property.
<i>Concern about children crossing Main Street at Edgewood. Dangerous intersection.</i>	Taylor Morrison cannot control Discovery Cube's pedestrian crossing at Main & Edgewood, or illegal crossing on Main. Our project does provide, however, a 10ft sidewalk on our frontage allowing Discovery Cube patrons to walk north and cross at the corner of Main & Park Santiago.
<i>What is the timeframe for the EIR?</i>	Undetermined at this time if we'll need to process an EIR. Still completing project's Initial Study. Will likely be an amendment of the prior EIR.
<i>Comment - Concerned Discovery Cube will open up access to Edgewood.</i>	We have no relation to the Discovery Cube property.
<i>Comment - Property is not zoned for residential and office professional would provide a buffer to the existing residential.</i>	Taylor Morrison provided no response to this comment, as it was not a question.
<i>What is the setback from Main Street?</i>	22ft from back of gutter.
<i>What is the setback from the Park?</i>	14ft from the project's northerly property line.
<i>What is the setback from Spurgeon?</i>	50ft from the project's easterly property line.
<i>Are all units 3-story against the Park?</i>	No, there is a mix of 2 and 3 story units.
<i>Where is the entrance for emergency access? Why are there not two entries for fire response?</i>	Emergency vehicles will access off our Main Street entrance and utilize the project's internal loop road. The internal loop road is code compliant, therefore two entries is not required.
<i>Along the Spurgeon edge how many units are 2 story?</i>	5 of 13. <i>**Note, after review, actual count is 5 of 12.</i>
<i>A referendum was signed to keep the property professional office, why does Taylor Morrison think that can get residential approved?</i>	Because we are proposing a significantly less dense project than the last application, that blends into the existing neighborhood better than the last proposal.
<i>Comment – don't want residential and pit bulls in neighborhood against residential.</i>	Taylor Morrison provided no response to this comment, as it was not a question.
<i>When is the next meeting?</i>	To be determined. City requirements state prior to our next submittal.

TAYLOR MORRISON SANTA ANA
SUNSHINE COMMUNITY MEETING 04/20/2022
SIGN-IN SHEET

Full Name	Address	Phone Number	Email
Patricia Stark	318 E. Buffalo	714 504 3538	stark53@sbccollege.net
Edward Stark	318 E. Buffalo Ave		
Genelle Johnson	2545 Santiago	714 287 0940	genellejohnson@gmail.com
Bob Pedroner	2121 Parnett St	714 542 2210	gen4@yahoo.com
Glenda Pedroner	" "	"	"
Alan W. Myer	317 E. Santa Clara	714 542 4193	none
GABRIELA G.	301 E. Genette Ln Unit 245		gabrielg1116@gmail.com
Claudia + Sun Tanega	2518 N. Spurgeon St	949-201-7071 714-809-1179	Claudia@smail.com jtanegeba@smail.com
Rebecca + Steve Gutierrez	2235 N. SPURGEON ST.		gfamily477@yahoo.com
TIM + JANET BASALONE	2248 N. SPURGEON ST.	480-450-5378	TBASALONE@GMAIL.COM
HECTOR RAMIREZ	1005 BEECHWOOD ST	714-953-4063	HECTOR@GMAIL.COM
Cam Mitchell	2336 Valencia	714 543-2280	cantrm1025@att.net

TAYLOR MORRISON SANTA ANA
SUNSHINE COMMUNITY MEETING 04/20/2022
SIGN-IN SHEET

Full Name	Address	Phone Number	Email
Cecily Gates	713 E. 19 th St Santa Ana	714) 836-0768	
TIM RUSCH	1225 S. BROADWAY ST SA 714	2994455	
ROXY KIRK	2429 FRENCH		
BILLY LEIGH	2502 OAKMONT AVE	714/815-1140	
Naomi Orange	2411 Poinsettia st Santa Ana CA 92706	714-931-6089	
Ruth Hill Saba	2321 OAKMONT S.A 90	423-5909	
Michael Plantamura	2501 OAKMONT AVE SANTA ANA, CA	—	
Bobbie ROOKER	2034 Poinsettia Santa Ana 92766		
Christine Deming Helvig	2536 N. Valencia St. Santa Ana, CA 92706		cdemmyhelvig@msn.com
MICHELLE HELVIG	2311 SANTIAGO ST. SANTA ANA, CA 92706		
PAMELA ANGELL	2407 SANTIAGO SANTA ANA 92706		
Paul Schaefer	1141 W. RIVERA DR, SANTA ANA		PaulSchaefer1@gmail.com

TAYLOR MORRISON SANTA ANA
SUNSHINE COMMUNITY MEETING 04/20/2022
SIGN-IN SHEET

Full Name	Address	Phone Number	Email
DALE HELWIG	2536 VALENCIA ST		NSAPAinfo@gmail.com
Steve + Peggy Steggell	2233 Poinsettia S.A		spsteggell@msn.com
Pat + Cliff Campbell	530 E. Santa Clara S.A		CP.Campbell@ATT.net
SUSAN HYATT	2407 French St. SA		s.hyatt714@ sbcglobal.net
NBRIDOP	2424 VALENCIA SA		
Deborah Hicks	2629 Santiago St SA 92706		chzpuff@sbcglobal.net
Robert DeBack	2629 Santiago St Santa Ana 92706		bobokbach@sbcglobal.net
N PINCHN	602 VIRGINIA		
Ray Sanders	2422 French St		raysanders10 @gmail.com
Jim Cordiel	2515 OAKMONT AVE		JBC.1929@ EMAIL.COM.
DARCIÉ CANCINO	909 E. GROVEMONT ST. SANTA ANA 92706		darcielo@gmail.com
Gil VAN DER MERCIER	2219 N. SPURGEON SA 92706		GVANDE6576@ AOL.COM

TAYLOR MORRISON SANTA ANA
SUNSHINE COMMUNITY MEETING 04/20/2022
SIGN-IN SHEET

Full Name	Address	Phone Number	Email
Suzanne Blau			shb2417@gmail.com
Rafael Orozco			tucemp@gmail.com
Andy Rosner	702 E. Santa Clara Santa Ana, Ca		
Dee Kinsbursky	2425 Poinsett Hill Santa Ana, CA		1Kinsbursky@gmail.com KHI@oxbury.com
Art Pedron	2309 N. Surgen Santa Ana 92708	714-606-7628	artpedron@gmail.com
Ali Pereshkpor	20 Civic Center Plaza Santa Ana	(714) 647-5702	Apereshkpor@santaana.org
Jason Venable	118 Edgewood Rd Santa Ana 92706	714-296-1610	
Judy Swytek	802 Grovemont SA 92706		Jswytek@pacbell.net
Francine Vasquez	2500 Valencia St. S.A. 92706		
Raul Duran LLuvia	2416 N. BUSH ST S.A. 92706	714-412-9180	RaulDuran85@gmail.com
Pathy Morehead	2409 N. Valencia Santa Ana, CA 92708		morehead@gmail.com
Mary Gies	2308 Oakmont Ave	714-542-1241	

TAYLOR MORRISON SANTA ANA
SUNSHINE COMMUNITY MEETING 04/20/2022
SIGN-IN SHEET

Full Name	Address	Phone Number	Email
Sup McDonald	2403 French St	714-272- 9543	
Zetulio Jimenez	2529 Valencia ST	714-743 1594	Zetulio@gmail.com
JOHN SHERMAN	214 E. SANTA ANA	714- 285-4017	J.SHERMAN@ CALIFORNIALIFE. ORG
David Wavro	143 E. City Place Dr Santa Ana,	949-230-9472	david@dwsignature.com
Joey Gonzalez	1015 E. Avalon Ave Santa Ana	714-655-5237	
ERIC SCANDRETT	2731 N. LOWELL LN. S.A 92706	714-543 9233	
PATRICIA COLEMAN	2323 SANTIAGO ST S.A 92706	714 542-4808	pcoleman6@gmail.com
Dobres Aguilar	2602 Lincoln Ave Santa Ana 92706	714 3064277	dcook92808@ gmail.com
Carol Park	2429 Poinsettia St	714 2933747	Carol.Park@
Kim Hammond	2527 Santiago St S.A. Ca 92706		Stipe of Kimhammond@
Doug Astar	2510 Santiago St		Small com
Antonio SEARS	2625 LARCAWAT	714 415 8442	

Heidi Yamami 624
Virginia Ave

yamamiheidi@
gmail.com

TAYLOR MORRISON SANTA ANA
SUNSHINE COMMUNITY MEETING 04/20/2022
SIGN-IN SHEET

Full Name	Address	Phone Number	Email
Alex + Julie Jennings	French St.	—	jahjennings@gmail.com
Steve Swytak	802 Grovemant		ppusher@pacbell.net
Michele Lyan	2540 Santiago		bsbelle@att.net
Sara Trask	2503 Poinsettia St		trask5675@gmail.com
Greslin Murray	517 Virginia Ave.		g.murray584@gmail.com
Minnie Schmabel	2510 Valencia		minnie.schmabel@gmail.com
Margata Macedonia			
Kelly Medina	2329 French St		Kelly.medina@yahoo.com
MARK McLoughlin	2415 R. RIVERSIDE		
CHARLES BRADY	611 VIRGINIA		
RANN McSorley	611 VIRGINIA		KATHMACKM@Yahoo.com

TAYLOR MORRISON SANTA ANA
SUNSHINE COMMUNITY MEETING 04/20/2022
SIGN-IN SHEET

Full Name	Address	Phone Number	Email
Terry Gonzalez	1015 E Avalon Ave.	310 460 7845	terrygdesign@gmail.com
Chris Lava	2834 Olive Ln	714-558 0575	clorasmith 200@gmail.com
David Slafon	815 Clemenson AV		davidslafon66@gmail.com
Sharon Gullikson	2303 Santiago	714 313-8993	sharon.gullikson @gmail.com
Brian Poteraj	2303 Santiago		
Jim Maynard	903 E Jorguill Rd Santa, CA	562 631 7821	JM
Thomas Cantrey	2412 Valencia Santa Ana	714-501-4733	Cantreyt@gmail.com
TOOD HAMMOND	2527 SANTIAGO SANTA ANA CA 92706	562-256 6371	.

TAYLOR MORRISON SANTA ANA
SUNSHINE COMMUNITY MEETING 04/20/2022
SIGN-IN SHEET

Full Name	Address	Phone Number	Email
Lusian Corene	2548 Santiago St	714 625203	
Yveth Perez	710 Glenmont		

Santa Ana “Sunshine Ordinance” Meeting

2525 Main Street Development
April 20th, 2022



TaylorMorrison.



Taylor Morrison Introductions:

- National, Top 5, publicly traded homebuilder
- Fortune 500 Company
- Based in Scottsdale, AZ
- Serve an array of consumer groups
- Operating in 19 markets within 11 states
- Company legacy dating back over 100 years, including Taylor Woodrow and William Lyon Homes in Southern California
- CEO Sheryl Palmer



America's Most Trusted

Taylor Morrison is proud to be recognized as AMERICA'S MOST TRUSTED® HOME BUILDER* SIX YEARS IN A ROW!

Receiving this recognition of trust from our home shoppers is truly the greatest honor. This amazing achievement is only possible through the dedication of our team and the passion they have for building positive relationships with customers like you.



*LET'S TALK
ABOUT...*



THIS IS NOT US!



THIS IS US!



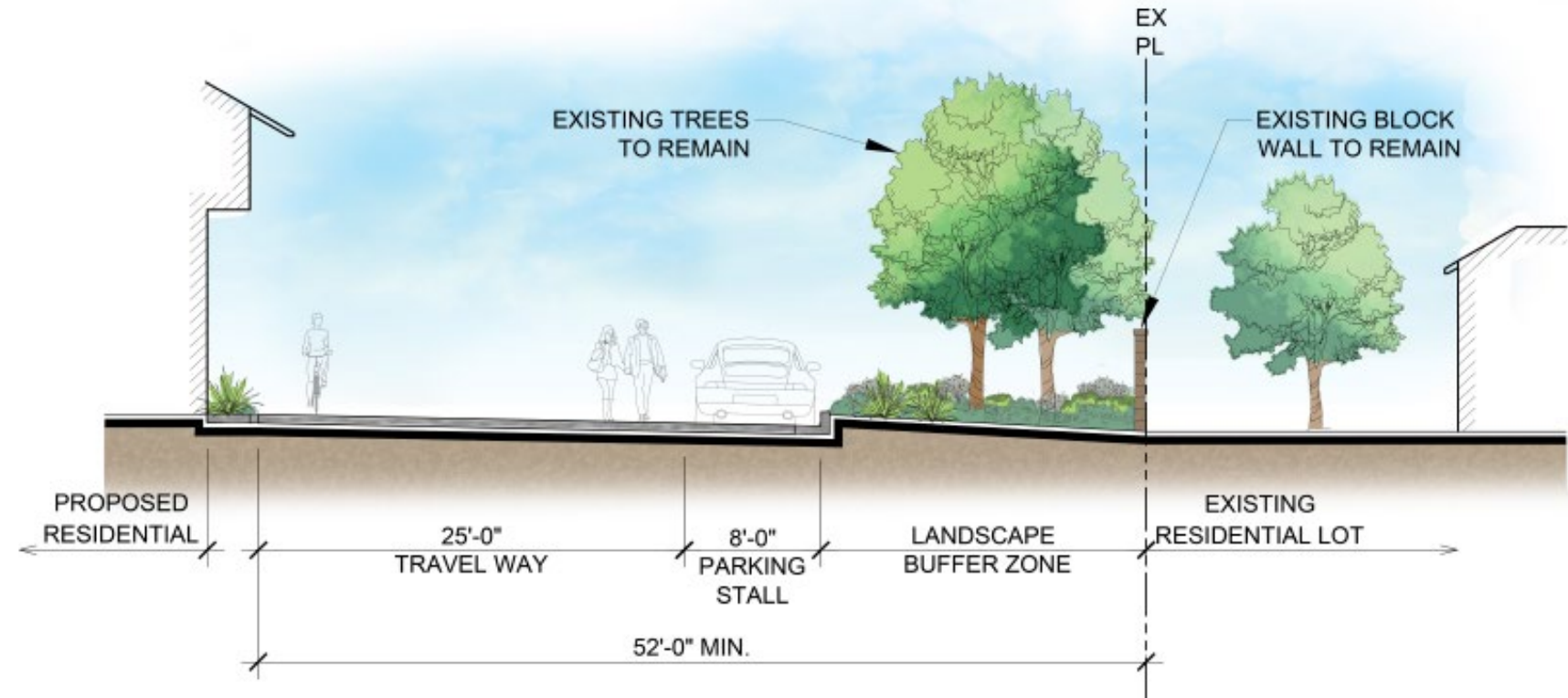
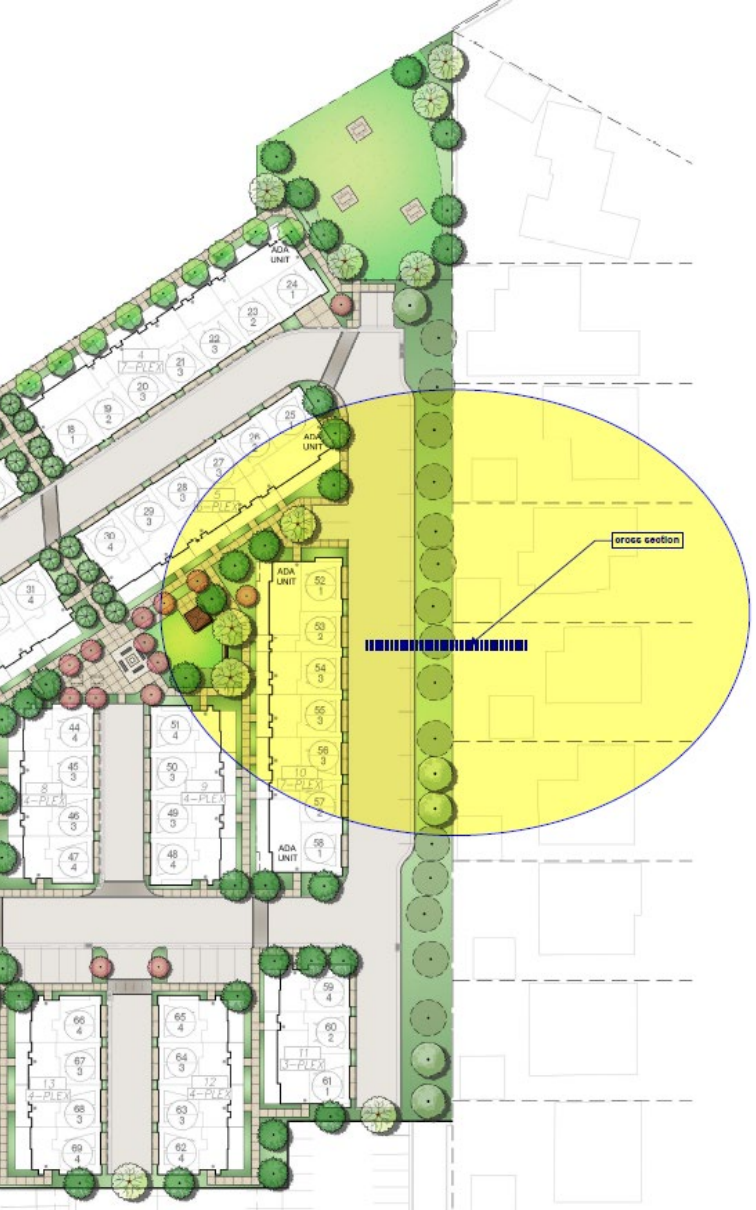
Easterly view from new entry at Main Street and Park Santiago

Internal courtyard view



Proposed Project Considerations To Date:

- 81 market rate townhomes; 2 to 3 stories
- 3 & 4 bedroom units with 2-car direct access garages
- 203 total parking spaces (41 guest)
- Reoriented project access to Main and Park Santiago
- No onsite affordable housing, in-lieu proposed to City
- Maintained 50' setback to Spurgeon St. property lines
- Preserving all existing trees along easterly boundary
- Perimeter fencing; rod iron and block wall
- Proposed individual trash cans, versus communal bins

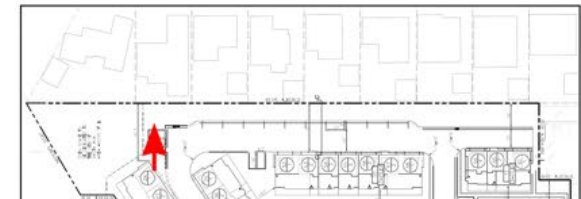




Second Floor

Views from Unit 24

2525 Main Street





Third Floor

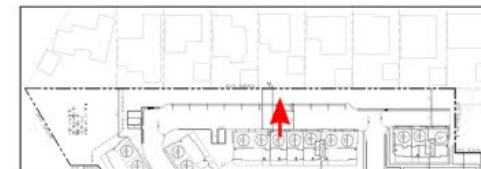


Second Floor



Views from Unit 54

2525 Main Street





Third Floor

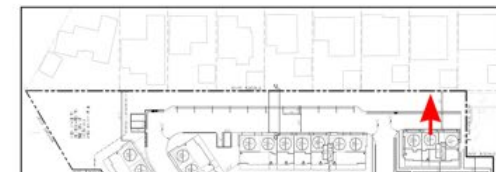


Second Floor



Views from Unit 60

2525 Main Street



Thank You for coming !

Q & A

tmsantaana92705@gmail.com