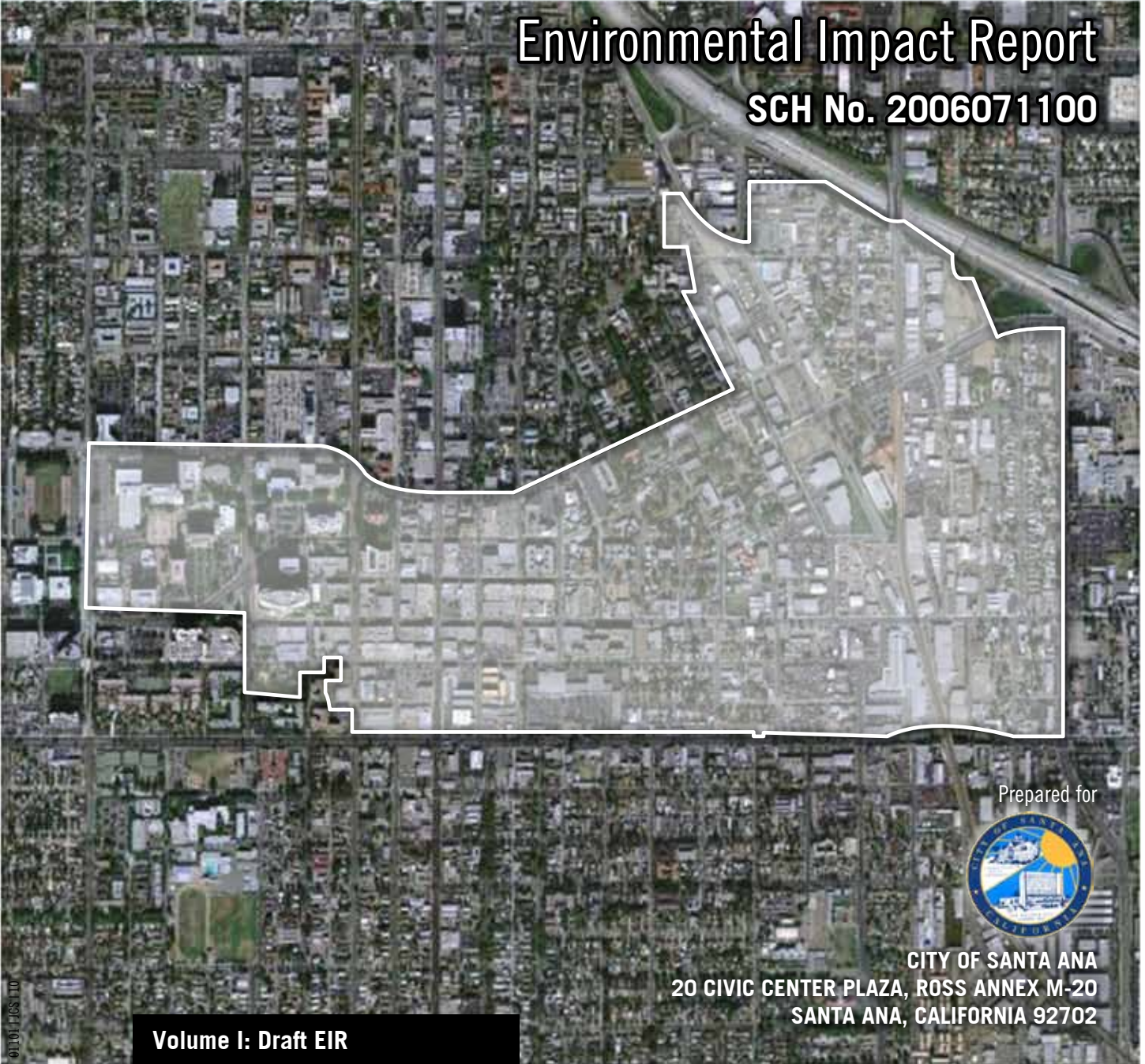


City of Santa Ana

Transit Zoning Code (SD 84A and SD 84B)

Environmental Impact Report

SCH No. 2006071100



Prepared for



CITY OF SANTA ANA
20 CIVIC CENTER PLAZA, ROSS ANNEX M-20
SANTA ANA, CALIFORNIA 92702

Volume I: Draft EIR

FEBRUARY 2010

Prepared by



12301 WILSHIRE BOULEVARD, SUITE 430
LOS ANGELES, CALIFORNIA 90025

CITY OF SANTA ANA TRANSIT ZONING CODE (SD 84A AND SD 84B)

Environmental Impact Report

SCH No. 2006071100

Volume I: Draft EIR

Prepared for
City of Santa Ana
20 Civic Center Plaza, Ross Annex M-20
Santa Ana, California 92702

Prepared by
PBS&J
12301 Wilshire Boulevard, Suite 430
Los Angeles, California 90025

February 2010

Contents

Volume I: Draft EIR

CHAPTER 1	Executive Summary.....	1-1
1.1	Purpose of the Summary.....	1-1
1.2	Project Location.....	1-1
1.3	Project Objectives.....	1-1
1.4	Project Description.....	1-6
1.5	Community/Agency Issues.....	1-9
1.6	Mitigation Monitoring and Reporting Program.....	1-9
1.7	Alternatives.....	1-10
1.8	Classification of Environmental Impacts.....	1-10
1.9	Environmental Impacts.....	1-10
CHAPTER 2	Introduction.....	2-1
2.1	Background.....	2-1
2.2	Purpose of the EIR.....	2-1
2.3	Type of EIR.....	2-2
2.4	EIR Review Process.....	2-2
2.5	Intended Uses of the EIR.....	2-3
2.6	EIR Format and Contents.....	2-5
2.7	List of Abbreviations.....	2-6
CHAPTER 3	Project Description.....	3-1
3.1	Existing Conditions.....	3-1
3.1.1	Existing General Plan Land Use Designations.....	3-1
3.1.2	Existing Zoning Designations.....	3-1
3.1.3	Redevelopment Project Area.....	3-8
3.1.4	Surrounding Land Uses.....	3-8
3.2	Project Objectives.....	3-8
3.3	Project Description.....	3-10
3.3.1	District Descriptions.....	3-16
3.3.2	Development Standards by District within Proposed Project.....	3-21
3.3.3	Parking and Circulation.....	3-22
3.3.4	Residential Development and City Population.....	3-24
3.4	Buildout.....	3-27
3.5	Intended Uses of this EIR.....	3-27
3.6	Public Actions and Approvals Required.....	3-30
3.6.1	City Actions.....	3-30
3.6.2	State and Local Agencies.....	3-31
3.7	Alternatives.....	3-32
3.8	Cumulative Development Scenario.....	3-32

CHAPTER 4 **Environmental Setting, Impacts, and Mitigation Measures** 4-1

4.0 Introduction to the Environmental Analysis..... 4-1

4.0.1 Scope of the Environmental Impact Analysis..... 4-1

4.0.2 Format of the Environmental Analysis..... 4-2

4.1 Aesthetics/Visual Resources..... 4.1-1

4.1.1 Environmental Setting..... 4.1-1

4.1.2 Regulatory Framework 4.1-15

4.1.3 Project Impacts and Mitigation 4.1-18

4.1.4 Cumulative Impacts 4.1-27

4.1.5 References..... 4.1-29

4.2 Air Quality 4.2-1

4.2.1 Environmental Setting..... 4.2-1

4.2.2 Regulatory Framework 4.2-15

4.2.3 Project Impacts and Mitigation 4.2-20

4.2.4 Cumulative Impacts 4.2-38

4.2.5 References..... 4.2-40

4.3 Biological Resources 4.3-1

4.3.1 Environmental Setting..... 4.3-1

4.3.2 Regulatory Framework 4.3-9

4.3.3 Project Impacts and Mitigation 4.3-14

4.3.4 Cumulative Impacts 4.3-17

4.3.5 References..... 4.3-18

4.4 Cultural Resources..... 4.4-1

4.4.1 Environmental Setting..... 4.4-1

4.4.2 Regulatory Framework 4.4-10

4.4.3 Project Impacts and Mitigation 4.4-18

4.4.4 Cumulative Impacts 4.4-26

4.4.5 References..... 4.4-28

4.5 Hazards and Hazardous Materials 4.5-1

4.5.1 Environmental Setting..... 4.5-1

4.5.2 Regulatory Framework 4.5-4

4.5.3 Project Impacts and Mitigation 4.5-10

4.5.4 Cumulative Impacts 4.5-21

4.5.5 References..... 4.5-22

4.6 Hydrology and Water Quality..... 4.6-1

4.6.1 Environmental Setting..... 4.6-1

4.6.2 Regulatory Framework 4.6-7

4.6.3 Project Impacts and Mitigation 4.6-11

4.6.4 Cumulative Impacts 4.6-21

4.6.5 References..... 4.6-22

4.7 Land Use..... 4.7-1

4.7.1 Environmental Setting..... 4.7-1

4.7.2 Regulatory Framework 4.7-11

4.7.3 Project Impacts and Mitigation 4.7-19

4.7.4 Cumulative Impacts 4.7-37

4.7.5 References..... 4.7-39

4.8 Noise 4.8-1

4.8.1	Existing Conditions.....	4.8-1
4.8.2	Regulatory Framework	4.8-11
4.8.3	Project Impacts and Mitigation	4.8-17
4.8.4	Cumulative Impacts	4.8-39
4.8.5	References	4.8-42
4.9	Population, Housing, and Employment	4.9-1
4.9.1	Environmental Setting.....	4.9-1
4.9.2	Regulatory Framework	4.9-7
4.9.3	Project Impacts and Mitigation	4.9-14
4.9.4	Cumulative Impacts	4.9-20
4.9.5	References	4.9-20
4.10	Public Services	4.10-1
	<u>Fire Protection</u>	4.10-1
4.10.1	Environmental Setting.....	4.10-1
4.10.2	Project Impacts and Mitigation	4.10-3
4.10.3	Cumulative Impact.....	4.10-5
	<u>Police Protection</u>	4.10-6
4.10.4	Environmental Setting.....	4.10-6
4.10.5	Regulatory Framework	4.10-6
4.10.6	Project Impacts and Mitigation	4.10-7
4.10.7	Cumulative Impacts	4.10-9
	<u>Schools</u>	4.10-9
4.10.8	Environmental Setting.....	4.10-9
4.10.9	Regulatory Context	4.10-11
4.10.10	Project Impacts and Mitigation	4.10-15
4.10.11	Cumulative Impacts	4.10-17
	<u>Library Services</u>	4.10-17
4.10.12	Environmental Setting.....	4.10-17
4.10.13	Regulatory Framework	4.10-18
4.10.14	Project Impacts and Mitigation	4.10-18
4.10.15	Cumulative Impacts	4.10-20
	<u>Parks</u>	4.10-20
4.10.16	Environmental Setting.....	4.10-20
4.10.17	Regulatory Framework	4.10-21
4.10.18	Project Impacts and Mitigation	4.10-25
4.10.19	Cumulative Impacts	4.10-27
4.10.20	References	4.10-27
4.11	Transportation/Traffic.....	4.11-1
4.11.1	Environmental Setting.....	4.11-1
4.11.2	Regulatory Framework	4.11-30
4.11.3	Project Impacts and Mitigation	4.11-33
4.11.4	Cumulative Impacts	4.11-125
4.11.5	References	4.11-126
4.12	Utilities and Service Systems.....	4.12-1
	<u>Water Supply</u>	4.12-1
4.12.1	Environmental Setting.....	4.12-1
4.12.2	Regulatory Framework	4.12-5

4.12.3	Project Impacts and Mitigation	4.12-8
4.12.4	Cumulative Impacts	4.12-12
	<u>Sewer Services</u>	4.12-13
4.12.5	Environmental Setting	4.12-13
4.12.6	Regulatory Framework	4.12-14
4.12.7	Project Impacts and Mitigation	4.12-19
4.12.8	Cumulative Impacts	4.12-22
	<u>Solid Waste</u>	4.12-23
4.12.9	Environmental Setting	4.12-23
4.12.10	Project Impacts and Mitigation	4.12-25
4.12.11	Cumulative Impacts	4.12-27
	<u>Energy</u>	4.12-28
4.12.12	Environmental Setting	4.12-28
4.12.13	Regulatory Framework	4.12-30
4.12.14	Project Impacts and Mitigation	4.12-31
4.12.15	Cumulative Impacts	4.12-35
4.12.16	References	4.12-35
4.13	Global Climate Change	4.13-1
4.13.1	Introduction	4.13-1
4.13.2	Existing Conditions	4.13-2
4.13.3	Regulatory Framework	4.13-9
4.13.4	Project Impacts and Mitigation	4.13-15
4.13.5	References	4.13-25
CHAPTER 5	Alternatives	5-1
5.1	Introduction	5-1
5.2	Alternatives Not Evaluated in this EIR	5-2
5.3	Alternatives Analysis	5-3
5.3.1	Alternative 1—No Project/Reasonably Foreseeable Development (Continuation of Existing General Plan)	5-4
5.3.2	Alternative 2—Overall Reduced Density	5-10
5.3.3	Alternative 3—Low-Rise Project	5-19
5.4	Summary Comparison of Alternatives	5-28
5.5	Attainment of Project Objectives	5-29
5.6	Environmentally Superior Alternative	5-30
CHAPTER 6	Other CEQA Considerations	6-1
6.1	Significant and unavoidable impacts of the proposed project	6-1
6.2	Significant Irreversible Environmental Effects	6-2
6.3	Growth-Inducing Impacts	6-3
6.3.1	Economic Effects	6-4
6.3.2	Growth-Inducing Effects of the Proposed Project	6-6
6.4	Mitigation Measures Proposed to Minimize Significant Effects of the Proposed project	6-6
6.5	Alternatives to the Transit Zoning Code (SD 84A and SD 84B)	6-6
CHAPTER 7	Report Preparers	7-1

Volume II: Draft EIR Appendices

Appendix A Notice of Preparation (NOP), Initial Study (IS), and Comments on the IS/NOP
 Appendix B Air Quality Data
 Appendix C Sensitive Species Potentially Occurring within the Study Area
 Appendix D Cultural Resources Information
 Appendix E EDR Report
 Appendix F Noise Data
 Appendix G Traffic Study
 Appendix H Water Supply Assessment
 Appendix I Greenhouse Gas Emissions Worksheets

Figures

Figure ES-1 Regional Location Map 1-2
 Figure ES-2 Transit Zoning Code Map..... 1-3
 Figure 3-1 Regional Location Map 3-2
 Figure 3-2 Existing Land Use 3-3
 Figure 3-3 Existing Zoning 3-5
 Figure 3-4 Transit Zoning Code (SD 84A and SD 84B) Map..... 3-11
 Figure 3-5 Santa Ana Redevelopment Agency Parcels..... 3-14
 Figure 3-6 Potential New Santa Ana Redevelopment Agency Acquisitions..... 3-15
 Figure 3-7 Development Proposal 3-17
 Figure 3-8 Demolitions..... 3-19
 Figure 3-9 Street Network Plan..... 3-25
 Figure 3-10 Cumulative Projects 3-35
 Figure 4.1-1 Viewpoint Key Map..... 4.1-5
 Figure 4.1-2 Viewpoints 1 and 2 within the Transit Zoning Code (SD 84A and SD 84B) Area 4.1-7
 Figure 4.1-3 Viewpoints 3 and 4 within the Transit Zoning Code (SD 84A and SD 84B) Area 4.1-9
 Figure 4.1-4 Viewpoints 5 and 6 within the Transit Zoning Code (SD 84A and SD 84B) Area 4.1-11
 Figure 4.1-5 Viewpoints 7 and 8 within the Transit Zoning Code (SD 84A and SD 84B) Area 4.1-13
 Figure 4.4-1 Santa Ana Register of Historical Properties within the Transit Zoning Code Area..... 4.4-5
 Figure 4.7-1 Transit Zoning Code (SD 84A and SD 84B) Map..... 4.7-3
 Figure 4.7-2 Existing Land Use 4.7-5
 Figure 4.7-3 Existing Zoning 4.7-9
 Figure 4.7-4 California Enterprise Zones..... 4.7-13
 Figure 4.7-5 Santa Ana Redevelopment Project Areas 4.7-17
 Figure 4.8-1 Noise Monitoring Locations 4.8-7
 Figure 4.10-1 Location of City Public Facilities (Fire and Police Stations and Libraries) 4.10-2
 Figure 4.10-2 Location of the Schools Serving the Area 4.10-10
 Figure 4.10-3 Annual Enrollment Change 4.10-13
 Figure 4.10-4 Ten-Year Enrollment Projection Scenario A 4.10-13
 Figure 4.10-5 Locations of Nearby Parks..... 4.10-23
 Figure 4.11-1 Study Location Map..... 4.11-3
 Figure 4.11-2 Study Intersections 4.11-9
 Figure 4.11-3A Existing AM Peak Hour Volumes 4.11-14
 Figure 4.11-3B Existing AM Peak Hour Volumes 4.11-15

Figure 4.11-3C Existing AM Peak Hour Volumes..... 4.11-16

Figure 4.11-3D Existing AM Peak Hour Volumes..... 4.11-17

Figure 4.11-3E Existing AM Peak Hour Volumes..... 4.11-18

Figure 4.11-4A Existing PM Peak Hour Volumes 4.11-19

Figure 4.11-4B Existing PM Peak Hour Volumes 4.11-20

Figure 4.11-4C Existing PM Peak Hour Volumes 4.11-21

Figure 4.11-4D Existing PM Peak Hour Volumes 4.11-22

Figure 4.11-4E Existing PM Peak Hour Volumes 4.11-23

Figure 4.11-5A 2030 Without Project AM Peak Hour Volumes..... 4.11-36

Figure 4.11-5B 2030 Without Project AM Peak Hour Volumes..... 4.11-37

Figure 4.11-5C 2030 Without Project AM Peak Hour Volumes..... 4.11-38

Figure 4.11-5D 2030 Without Project AM Peak Hour Volumes..... 4.11-39

Figure 4.11-5E 2030 Without Project AM Peak Hour Volumes..... 4.11-40

Figure 4.11-6A 2030 Without Project PM Peak Hour Volumes 4.11-41

Figure 4.11-6B 2030 Without Project PM Peak Hour Volumes 4.11-42

Figure 4.11-6C 2030 Without Project PM Peak Hour Volumes 4.11-43

Figure 4.11-6D 2030 Without Project PM Peak Hour Volumes 4.11-44

Figure 4.11-6E 2030 Without Project PM Peak Hour Volumes 4.11-45

Figure 4.11-7A 2035 Without Project AM Peak Hour Volumes..... 4.11-52

Figure 4.11-7B 2035 Without Project AM Peak Hour Volumes..... 4.11-53

Figure 4.11-7C 2035 Without Project AM Peak Hour Volumes..... 4.11-54

Figure 4.11-7D 2035 Without Project AM Peak Hour Volumes..... 4.11-55

Figure 4.11-7E 2035 Without Project AM Peak Hour Volumes..... 4.11-56

Figure 4.11-8A 2035 Without Project PM Peak Hour Volumes 4.11-57

Figure 4.11-8B 2035 Without Project PM Peak Hour Volumes 4.11-58

Figure 4.11-8C 2035 Without Project PM Peak Hour Volumes 4.11-59

Figure 4.11-8D 2035 Without Project PM Peak Hour Volumes 4.11-60

Figure 4.11-8E 2035 Without Project PM Peak Hour Volumes 4.11-61

Figure 4.11-9A 2030 With Project AM Peak Hour Volumes..... 4.11-70

Figure 4.11-9B 2030 With Project AM Peak Hour Volumes..... 4.11-71

Figure 4.11-9C 2030 With Project AM Peak Hour Volumes..... 4.11-72

Figure 4.11-9D 2030 With Project AM Peak Hour Volumes 4.11-73

Figure 4.11-9E 2030 With Project AM Peak Hour Volumes..... 4.11-74

Figure 4.11-10A 2030 With Project PM Peak Hour Volumes..... 4.11-75

Figure 4.11-10B 2030 With Project PM Peak Hour Volumes..... 4.11-76

Figure 4.11-10C 2030 With Project PM Peak Hour Volumes..... 4.11-77

Figure 4.11-10D 2030 With Project PM Peak Hour Volumes..... 4.11-78

Figure 4.11-10E 2030 With Project PM Peak Hour Volumes..... 4.11-79

Figure 4.11-11A 2035 With Project AM Peak Hour Volumes..... 4.11-86

Figure 4.11-11B 2035 With Project AM Peak Hour Volumes 4.11-87

Figure 4.11-11C 2035 With Project AM Peak Hour Volumes..... 4.11-88

Figure 4.11-11D 2035 With Project AM Peak Hour Volumes..... 4.11-89

Figure 4.11-11E 2035 With Project AM Peak Hour Volumes..... 4.11-90

Figure 4.11-12A 2035 With Project PM Peak Hour Volumes..... 4.11-91

Figure 4.11-12B 2035 With Project PM Peak Hour Volumes..... 4.11-92

Figure 4.11-12C 2035 With Project PM Peak Hour Volumes..... 4.11-93

Figure 4.11-12D 2035 With Project PM Peak Hour Volumes..... 4.11-94

Figure 4.11-12E 2035 With Project PM Peak Hour Volumes..... 4.11-95

Figure 4.11-13 Study Intersection Mitigation Measures..... 4.11-123
 Figure 4.12-1 Water Supply Lines in Transit Zoning Code Area..... 4.12-3
 Figure 4.12-2 Sewer Lines in Transit Zoning Code Area.....4.12-15
 Figure 4.12-3 Storm Drains in Transit Zoning Code Area.....4.12-17

Tables

Table ES-1 Summary of Transit Zoning Code Potential Net Change..... 1-9
 Table ES-2 Summary of Environmental Effects and Mitigation Measures..... 1-13
 Table 2-1 List of Abbreviations 2-6
 Table 3-1 Summary of Transit Zoning Code (SD 84A and SD 84B) Development Potential 3-16
 Table 3-2 Parking Requirement per Zone..... 3-23
 Table 3-3 List of Related Development Projects..... 3-32
 Table 4.2-1 Summary of Ambient Air Quality in the Proposed Project Vicinity 4.2-8
 Table 4.2-2 Required Best Available Control Measures for Fugitive Dust 4.2-11
 Table 4.2-3 Contingency Control Measures for Fugitive Dust During High Winds in Excess of 25 mph 4.2-14
 Table 4.2-4 Existing Localized Carbon Monoxide Concentrations 4.2-15
 Table 4.2-5 Unmitigated and Mitigated Localized Construction Emissions Concentrations 4.2-25
 Table 4.2-6 Transit Zoning Code (SD 84A and SD 84B) Buildout With Project (2035) Localized Carbon Monoxide Concentrations 4.2-26
 Table 4.2-7 Construction Emissions and Criteria Values, Santa Ana Redevelopment Agency Parcels..... 4.2-28
 Table 4.2-8 Proposed Project Daily Operational Emissions 4.2-34
 Table 4.4-1 SARHP Properties in the Project Area 4.4-7
 Table 4.4-2 Properties Proposed for Demolition Activities..... 4.4-23
 Table 4.7-1 Summary of Key Changes in Transit Zoning Code Areas..... 4.7-22
 Table 4.7-2 SCAG Regional Comprehensive Plan Policies (2008) 4.7-29
 Table 4.7-3 City of Santa Ana General Plan..... 4.7-34
 Table 4.8-1 Representative Environmental Noise Levels..... 4.8-3
 Table 4.8-2 Human Response to Different Levels of Groundborne Vibration 4.8-5
 Table 4.8-3 Existing Noise Levels around the Proposed Transit Zoning Code (SD 84A and SD 84B) Area..... 4.8-6
 Table 4.8-4 Existing Roadway Noise Levels..... 4.8-9
 Table 4.8-5 Land Use Compatibility for Community Noise Sources..... 4.8-12
 Table 4.8-6 City of Santa Ana Standards and Guidelines for Noise Levels by Land Use 4.8-14
 Table 4.8-7 City of Santa Ana Noise Ordinance Exterior Noise Standards 4.8-15
 Table 4.8-8 City of Santa Ana Noise Ordinance Interior Noise Standards..... 4.8-16
 Table 4.8-9 Noise Ranges of Typical Construction Equipment 4.8-21
 Table 4.8-10 Typical Outdoor Construction Noise Levels..... 4.8-22
 Table 4.8-11 Traffic Noise Impacts for Year 2030..... 4.8-27
 Table 4.8-12 Traffic Noise Impacts for Year 2035..... 4.8-31
 Table 4.8-13 Vibration Source Levels for Construction Equipment 4.8-38
 Table 4.9-1 Population: City of Santa Ana (1980–2009)..... 4.9-2
 Table 4.9-2 SCAG Population Growth Projections, 2005–2035 4.9-3
 Table 4.9-3 Housing Units: City of Santa Ana (2000–2009)..... 4.9-4
 Table 4.9-4 Households: DOF City of Santa Ana and Orange County (2000–2009)..... 4.9-5

Table 4.9-5	SCAG Household Growth Projections, 2005–2035	4.9-5
Table 4.9-6	Employment Forecast: Santa Ana, Orange County, and SCAG Region (2005–2035).....	4.9-6
Table 4.9-7	SCAG Regional Comprehensive Plan.....	4.9-8
Table 4.9-8	Regional Housing Needs Assessment—City of Santa Ana	4.9-9
Table 4.9-9	SCAG Compass Growth Vision Principles and Strategies	4.9-10
Table 4.9-10	Santa Ana General Plan Housing Element—New Housing Construction Objectives, 2006–2014	4.9-14
Table 4.9-11	Proposed Transit Zoning Code (SD 84A and SD 84B) Potential Net Growth.....	4.9-17
Table 4.10-1	Capacity and Enrollment of Schools	4.10-11
Table 4.10-2	Student Generation Rates by Housing Type	4.10-16
Table 4.10-3	Santa Ana Parks.....	4.10-20
Table 4.10-4	City of Santa Ana Park Development Fee.....	4.10-21
Table 4.11-1	Level of Service Definitions for Signalized Intersections.....	4.11-12
Table 4.11-2	Existing Peak Hour Intersection Conditions (ICU Method).....	4.11-24
Table 4.11-3	Existing Peak Hour Intersection Conditions (HCM Method).....	4.11-25
Table 4.11-4	Levels of Service for Arterial Street Segments Based upon Daily Traffic Volumes.....	4.11-26
Table 4.11-5	Existing Roadway Segment Daily Traffic Condition	4.11-26
Table 4.11-6	Levels of Service for Freeway Ramps.....	4.11-29
Table 4.11-7	Existing Freeway Ramp Analysis.....	4.11-29
Table 4.11-8	2030 Without Project Peak Hour Intersection Conditions (ICU Method).....	4.11-46
Table 4.11-9	2030 Without Project Peak Hour Intersection Conditions (HCM Method).....	4.11-47
Table 4.11-10	2030 Without Project Roadway Segment Daily Traffic Condition	4.11-47
Table 4.11-11	2030 Without Project Peak Hour Freeway Ramp Analysis.....	4.11-50
Table 4.11-12	2035 Without Project Peak Hour Intersection Conditions (ICU Method).....	4.11-62
Table 4.11-13	2035 Without Project Peak Hour Intersection Conditions (HCM Method).....	4.11-63
Table 4.11-14	2035 Without Project Roadway Segment Daily Traffic Condition	4.11-64
Table 4.11-15	2035 Without Project Peak Hour Freeway Ramp Analysis.....	4.11-66
Table 4.11-16	Project Trip Generation Rates.....	4.11-67
Table 4.11-17	Project Trip Generation	4.11-68
Table 4.11-18	2030 With Project Peak Hour Intersection Conditions (ICU Method).....	4.11-80
Table 4.11-19	2030 with Project Peak Hour Intersection Conditions (HCM Method)	4.11-81
Table 4.11-20	2030 With Project Roadway Segment Daily Traffic Conditions.....	4.11-82
Table 4.11-21	2030 With Project Peak Hour Freeway Ramp Analysis.....	4.11-84
Table 4.11-22	2035 With Project Peak Hour Intersection Conditions (ICU Method).....	4.11-96
Table 4.11-23	2035 With Project Peak Hour Intersection Conditions (HCM Method)	4.11-97
Table 4.11-24	2035 With Project Roadway Segment Daily Traffic Condition	4.11-99
Table 4.11-25	2035 With Project Peak Hour Freeway Ramp Analysis.....	4.11-101
Table 4.11-26	Parking Requirement Comparison	4.11-109
Table 4.11-27	Anticipated Parking Demand Versus Provided	4.11-110
Table 4.11-28	LOS Analysis/Determination of Impacts for 2030 Peak Hour (ICU).....	4.11-113
Table 4.11-29	Determination of Impacts for 2030 Peak Hour (HCM).....	4.11-114
Table 4.11-30	Determination of Impacts for 2035 Peak Hour (ICU).....	4.11-116
Table 4.11-31	Determination of Impacts for 2035 Peak Hour (HCM).....	4.11-117
Table 4.11-32	Level of Service Analysis of Mitigation for 2030 AM Peak Hour Conditions	4.11-121
Table 4.11-33	Level of Service Analysis of Mitigation for 2030 PM Peak Hour Conditions	4.11-121
Table 4.11-34	Level of Service Analysis of Mitigation for 2035 AM Peak Hour Conditions	4.11-122
Table 4.11-35	Level of Service Analysis of Mitigation for 2035 PM Peak Hour Conditions	4.11-122
Table 4.12-1	Existing Water Demand for the Project Area	4.12-2

Table 4.12-2	Supply/Demand Comparison for the City (afy).....	4.12-5
Table 4.12-3	Unit Water Demand Factors	4.12-9
Table 4.12-4	Existing Water Demand in the Area.....	4.12-10
Table 4.12-5	Projected Transit Zoning Code Buildout Demand.....	4.12-11
Table 4.12-6	Net Change in Water Demand Plan Area	4.12-11
Table 4.12-7	Existing Wastewater Demand for the Proposed Transit Zoning Code Project Area	4.12-19
Table 4.12-8	Overall Wastewater Demand for the Proposed Transit Zoning Code Project Area.....	4.12-20
Table 4.12-9	Net Increase in Solid Waste Generation.....	4.12-26
Table 4.12-10	2008 Southern California Edison Power Content.....	4.12-28
Table 4.12-11	Net Increase in Electricity Demand for Buildout of the Transit Zoning Code Area.....	4.12-32
Table 4.12-12	Natural Gas Demand for Net Buildout of the Transit Zoning Code Area	4.12-34
Table 4.13-1	Global Warming Potentials and Atmospheric Lifetimes of Select Greenhouse Gases	4.13-4
Table 4.13-2	California Greenhouse Gas Reductions Targets.....	4.13-12
Table 4.13-3	Potential Net Development, Unmitigated Carbon Dioxide Emissions.....	4.13-17
Table 4.13-4	Potential Net Development, Unmitigated Methane Emissions.....	4.13-18
Table 4.13-5	Potential Net Development, Unmitigated Nitrous Oxide Emissions.....	4.13-18
Table 4.13-6	Potential Net Development, Mitigated Carbon Dioxide Emissions	4.13-22
Table 4.13-7	Potential Net Development, Mitigated Methane Emissions	4.13-22
Table 4.13-8	Potential Net Development, Mitigated Nitrous Oxide Emissions.....	4.13-22
Table 4.13-9	Potential Net Development, Global Warming Potential.....	4.13-24
Table 5-1	Alternative 2 and Proposed Transit Zoning Code (SD 84A and SD 84B) Characteristics.....	5-10
Table 5-2	Alternative 3 and Proposed Transit Zoning Code (SD 84A and SD 84B) Characteristics.....	5-19
Table 5-3	Summary Comparison of Alternatives	5-29

