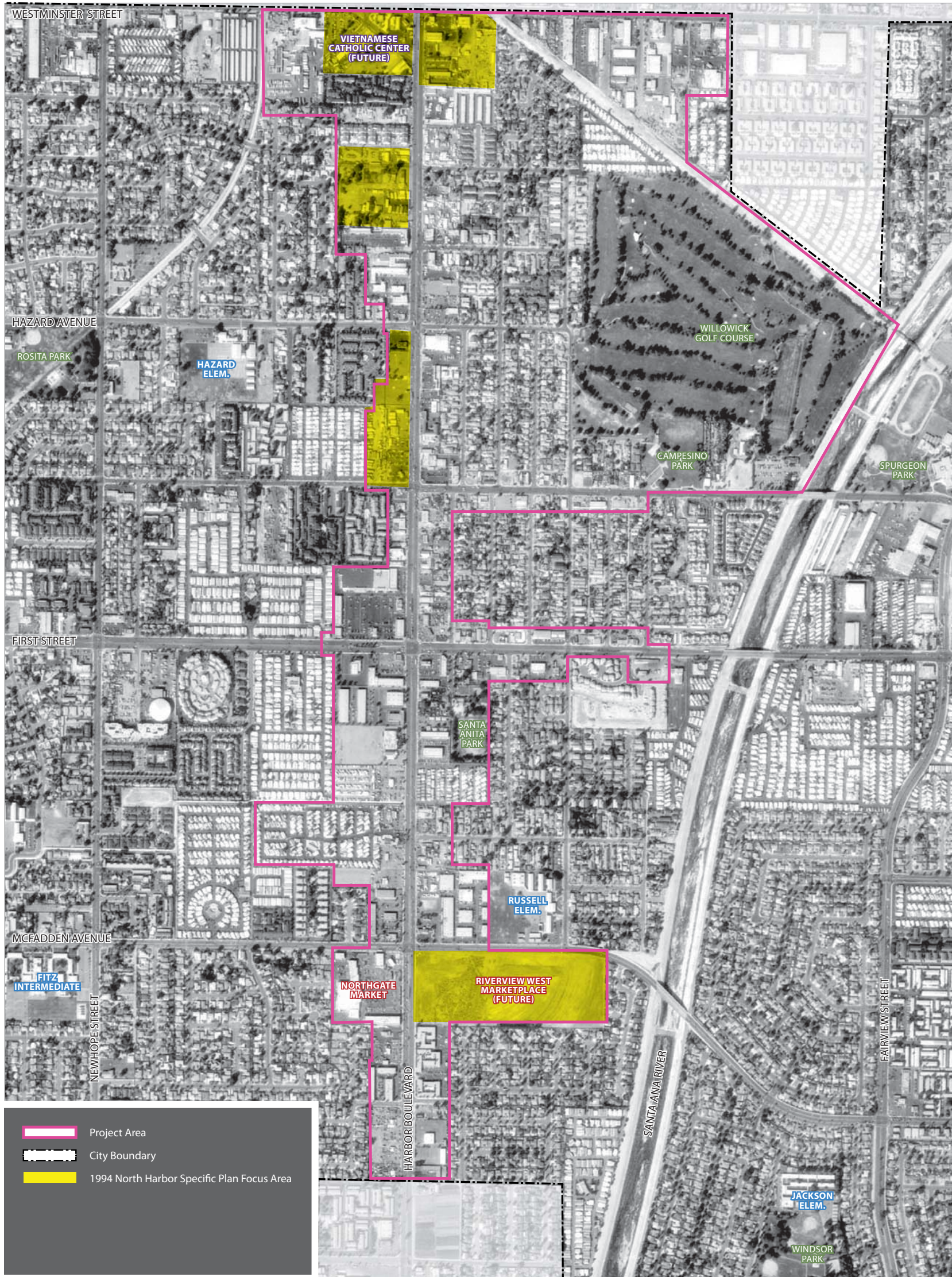


# 1991



Source: Environmental Data Resources

## HISTORICAL AERIAL: 1991

### Harbor Boulevard Mixed Use Transit Corridor, City of Santa Ana



This is a project of the City of Santa Ana with funding provided by the Southern California Association of Governments (SCAG) Compass Blueprint Program. Compass Blueprint assists Southern California cities and other organizations in evaluating planning options and stimulating development consistent with the region's goals. Compass Blueprint tools support visioning efforts, infill analysis, economic and policy analyses, and marketing and communication programs.

The preparation of this report has been financed in part through grants from the Federal Highway Administration (FHWA) and the Federal Transit Administration (FTA) through the U.S. Department of Transportation (DOT) in accordance with the provisions under the Metropolitan Planning Program as set forth in Section 104(f) of Title 23 of the U.S. Code.

The contents of this report reflect the views of the author who is responsible for the facts and accuracy of the data presented herein. The contents do not necessarily reflect the official views or policies of SCAG, DOT or the State of California. This report does not constitute a standard, specification or regulation. SCAG shall not be responsible for the City's future use or adaptation of the report.