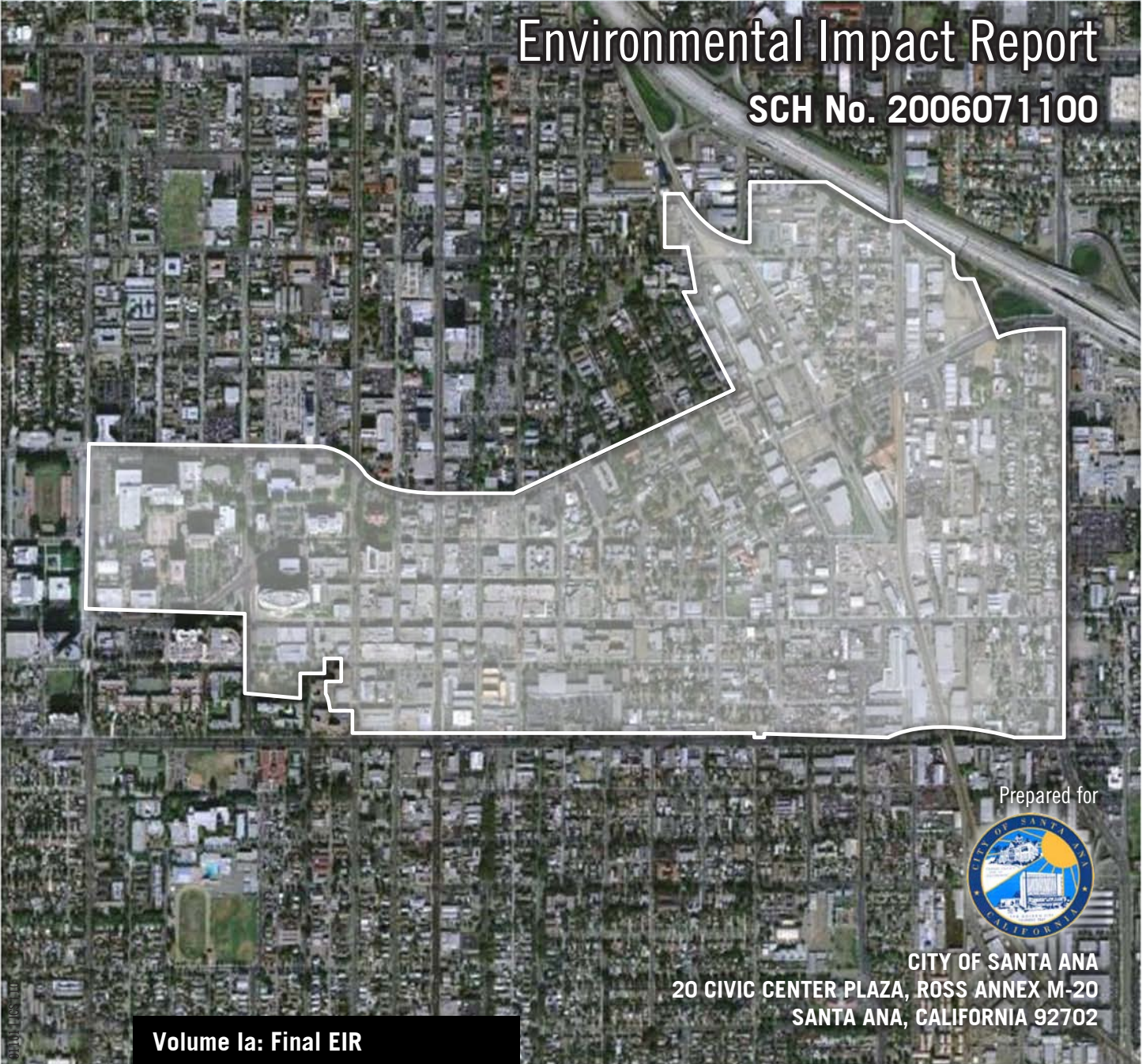


# City of Santa Ana

## Transit Zoning Code (SD 84A and SD 84B)

Environmental Impact Report  
SCH No. 2006071100



Prepared for



CITY OF SANTA ANA  
20 CIVIC CENTER PLAZA, ROSS ANNEX M-20  
SANTA ANA, CALIFORNIA 92702

Volume Ia: Final EIR

MAY 2010

Prepared by



12301 WILSHIRE BOULEVARD, SUITE 430  
LOS ANGELES, CALIFORNIA 90025



# CITY OF SANTA ANA TRANSIT ZONING CODE (SD 84A AND SD 84B)

## Environmental Impact Report

SCH No. 2006071100

*Volume Ia: Final EIR*

*Prepared for*  
**City of Santa Ana**  
20 Civic Center Plaza, Ross Annex M-20  
Santa Ana, California 92702

*Prepared by*  
**PBS&J**  
12301 Wilshire Boulevard, Suite 430  
Los Angeles, California 90025

May 2010



---

---

# Contents

---

---

## *Volume I: Draft EIR*

### **Volume Ia: Final EIR**

<b>CHAPTER 8</b>	<b>Introduction to the Final EIR .....</b>	<b>8-1</b>
8.1	CEQA Requirements.....	8-1
8.2	Public Review Process.....	8-1
8.3	Contents and Organization of the Final EIR.....	8-1
8.4	Use of the Final EIR.....	8-2
<b>CHAPTER 9</b>	<b>Changes to the Draft EIR.....</b>	<b>9-1</b>
9.1	Format of Text Changes .....	9-1
9.2	Text Changes.....	9-1
9.3	Figure Changes .....	9-63
9.4	Appendix Changes .....	9-77
<b>CHAPTER 10</b>	<b>Responses to Comments .....</b>	<b>10-1</b>
10.1	Organization of the Responses to Comments.....	10-1
10.2	Master Response: Project Clarification .....	10-2
10.2.1	Project Description Clarification .....	10-2
10.2.2	Project Objectives Clarification.....	10-5
10.3	Responses to Comments on the Draft EIR.....	10-5
10.3.1	Letter DTSC: Department of Toxic Substances Control (DTSC), Brownfields and Environmental Restoration Program—Cypress.....	10-6
10.3.2	Letter DOT: California Department of Transportation (Caltrans), District 12.....	10-14
10.3.3	Letter PUC: State of California Public Utilities Commission (PUC), Rail Crossings Engineering Section (RCES).....	10-20
10.3.4	Letter GG: City of Garden Grove.....	10-22
10.3.5	Letter IRV: City of Irvine, Community Development Department....	10-24
10.3.6	Letter TUS: City of Tustin, Community Development Department .....	10-27
10.3.7	Letter SAUSD: Santa Ana Unified School District.....	10-34
10.3.8	Letter LULAC: League of United Latin American Citizens (LULAC).....	10-37
10.3.9	Letter PLC: Public Law Center .....	10-54
10.3.10	Letter KC: Kennedy Commission .....	10-58
10.3.11	Letter CU: Chican@s Unidos.....	10-63
10.3.12	Letter JD: Jeff Dickman .....	10-75
10.3.13	Letter KB: Kirk Buttermore .....	10-106
10.3.14	Letter ZH: Zeke Hernandez.....	10-108
10.3.15	Letter AW: Andree Weger .....	10-111
10.3.16	Letter BG: Benjamin Grabiell.....	10-115

10.3.17 Letter PC1: Planning Commission Meeting, February ..... 10-117  
 10.3.18 Letter PC2: Planning Commission Meeting, March..... 10-125

CHAPTER 11 **Mitigation Monitoring and Reporting Program** ..... **11-1**  
 11.1 Introduction ..... 11-1  
 11.2 Enforcement ..... 11-1  
 11.3 Program Modification..... 11-1  
 11.4 Mitigation Monitoring and Reporting Program..... 11-1

**Final EIR Appendices**

Appendix G Traffic Report [Revised]  
 Appendix J Alternatives Testing—Financial Analyses [Revised]  
 Appendix K Developer Project Phase I Environmental Site Assessments

**Volume II: Draft EIR Appendices**

*Appendix A Notice of Preparation (NOP), Initial Study (IS), and Comments on the IS/NOP*  
*Appendix B Air Quality Data*  
*Appendix C Sensitive Species Potentially Occurring within the Study Area*  
*Appendix D Cultural Resources Information*  
*Appendix E EDR Report*  
*Appendix F Noise Data*  
*Appendix G Traffic Study*  
*Appendix H Water Supply Assessment*  
*Appendix I Greenhouse Gas Emissions Worksheets*

**Tables**

Table 10-1 Comment Letters Received during the Draft EIR Comment Period..... 10-1  
 Table 10-2 General Plan Policies ..... 10-49  
 Table 11-1 Mitigation Monitoring and Reporting Program Matrix..... 11-2