

**SITE PLAN
GENERAL NOTES**

- CONSTRUCTION THROUGHOUT SHALL CONFORM TO THE REQUIREMENTS OF THE UNIFORM BUILDING CODE DATED 1980 AND APPLICABLE CITY OF SANTA ANA BUILDING ORDINANCES.
- ALL CONTRACTORS SHALL BE RESPONSIBLE FOR VERIFYING ALL DIMENSIONS IN FIELD.
- ALL BUILDING DIMENSIONS INDICATED ARE TO COLUMN CENTER LINE, FACE OF CONCRETE OR FACE OF MASONRY UNLESS NOTED OTHERWISE.
- CONTRACTOR SHALL PROVIDE AND MAINTAIN ALL TEMPORARY BARRICADES AS REQUIRED BY PREVAILING CODES AND REGULATIONS.
- ALL CHANGES IN RAMP SLOPE TO BE EASED OVER A MINIMUM OF 2 FEET OF RAMP LENGTH TO AVOID SHARP ANGULAR TRANSITIONS.
- MINIMUM 7'-0" CLEAR HEAD ROOM SHALL BE MAINTAINED UNDER ALL BEAMS.
- PROVIDE 3/4" CHAMFER AT ALL EXPOSED CONCRETE EDGES OF WALLS, BEAMS, COLUMNS, ETC. UNLESS NOTED OTHERWISE.
- PROVIDE PORTABLE FIRE EXTINGUISHERS REQUIRED BY THE FIRE DEPT. FIELD INSPECTOR.
- PROVIDE PEDESTRIAN PROTECTION IN ACCORDANCE WITH CHAPTER 44, U.D.C.
- SLOPE PARKING RAMPS 5% MAX., SLOPE DRIVING RAMPS 12.5% MAX.

LEGAL DESCRIPTION

ALL LOTS 2, 3 AND 6 BLOCK 11 AND ALL LOTS 1, 2, 3, 4, 5 AND 6 BLOCK 12 TOWN OF SANTA ANA AS SHOWN ON A MAP THEREOF RECORDED IN BOOK 2 PAGE 51 OF MISCELLANEOUS RECORDS OF LOS ANGELES COUNTY CALIFORNIA TOGETHER WITH THAT PORTION OF SYCAMORE STREET AS LOCATED AND DESCRIBED IN THAT CERTAIN RESOLUTION NO. 28-17 OF THE CITY COUNCIL OF SANTA ANA, CALIFORNIA, A CERTIFIED COPY OF WHICH WAS RECORDED FEB. 11, 1982 AS DOCUMENT NO. 52-081577 OF OFFICIAL RECORDS OF ORANGE COUNTY CALIFORNIA, EXCEPTION THEREFROM EASTERLY 15 FEET OF SAID LOT 3 AND NORTHERLY 10 FEET OF SAID LOT 4 ALL IN SAID BLOCK 11, ALSO EXCEPTING THEREFROM THE NORTHERLY 10 FEET OF SAID LOTS 5 AND 6 OF SAID LOT 12.

PARKING DATA

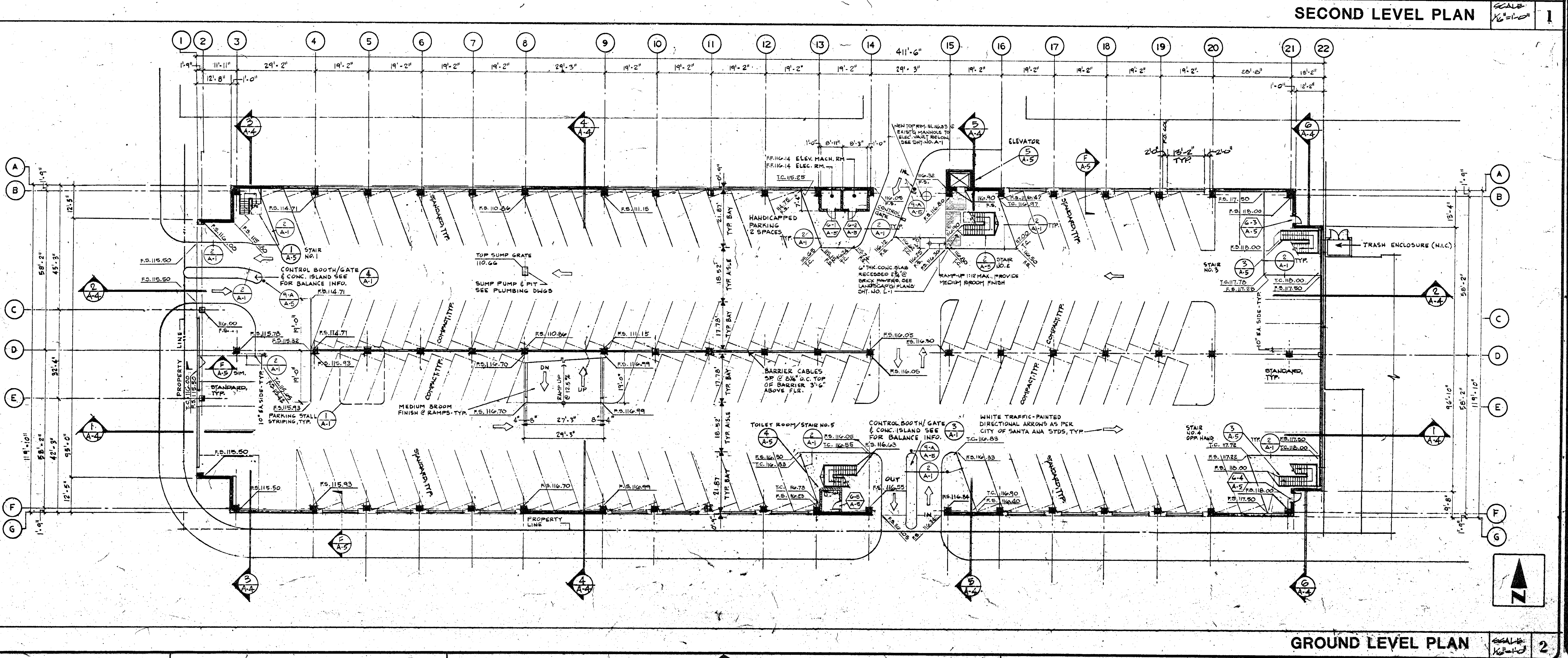
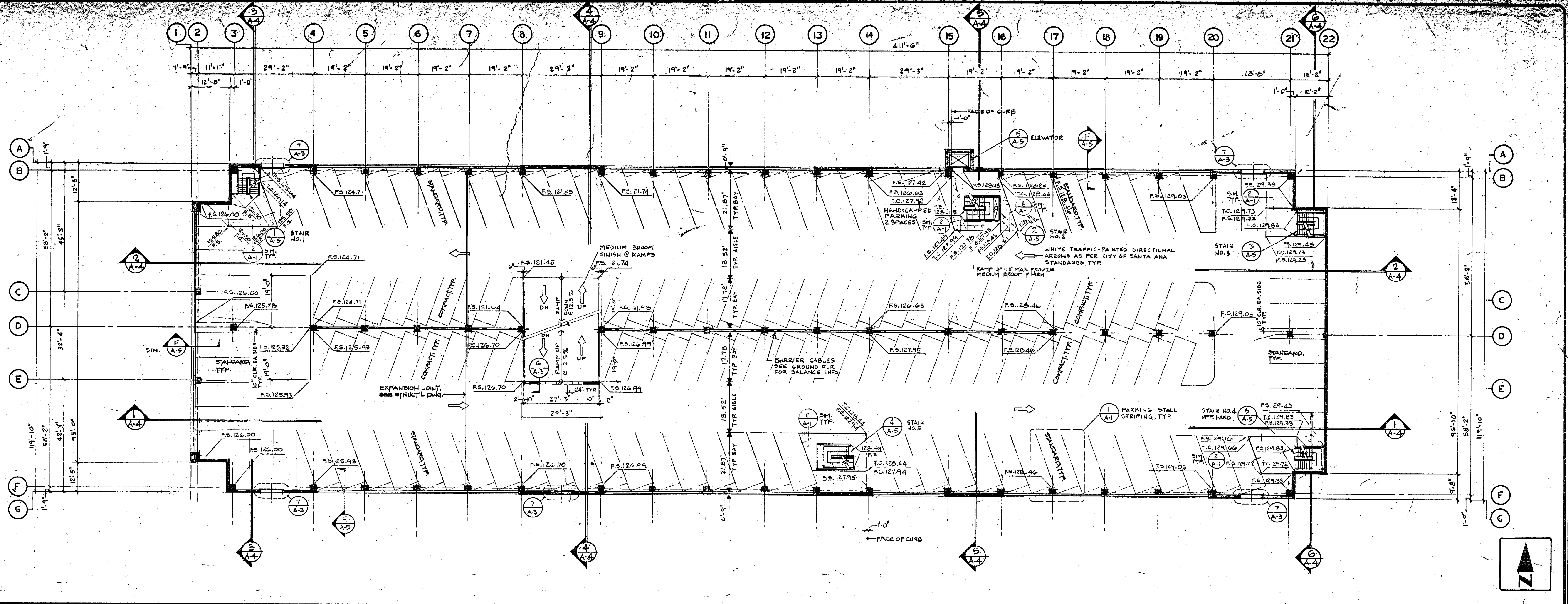
PARKING LEVEL	Space Type			TOTAL
	handicapped	standard	compact	
ONE	2	70	62	134
TWO	2	82	66	150
THREE	2	82	70	154
TOTAL	6	234	198	438

ROBERT ENGLEKIRK
CONSULTING STRUCTURAL ENGINEERS' INC.
3242 W. 8TH ST., SUITE 200
LOS ANGELES, CA 90005 (313) 385-5487

SITE PLAN
SANTA ANA DOWNTOWN PARKING
STRUCTURE and MALL
Santa Ana, California

JOB NUMBER: 81-114
SHEET NUMBER: A-1

2 OF 21
A-2
GROUND & SECOND LEVEL



S.A. DOWNTOWN
PRKG STRUCTURE

1-13-17

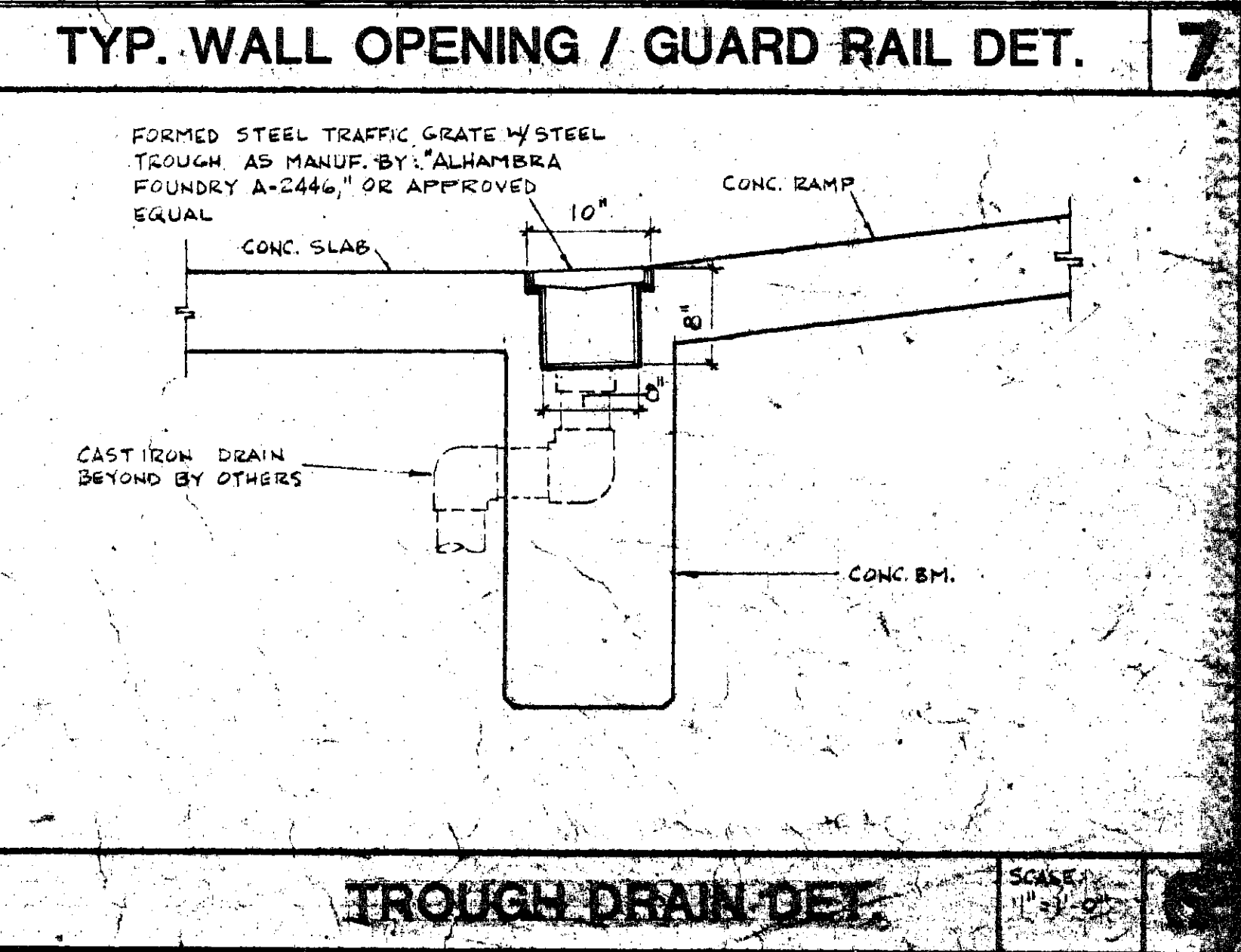
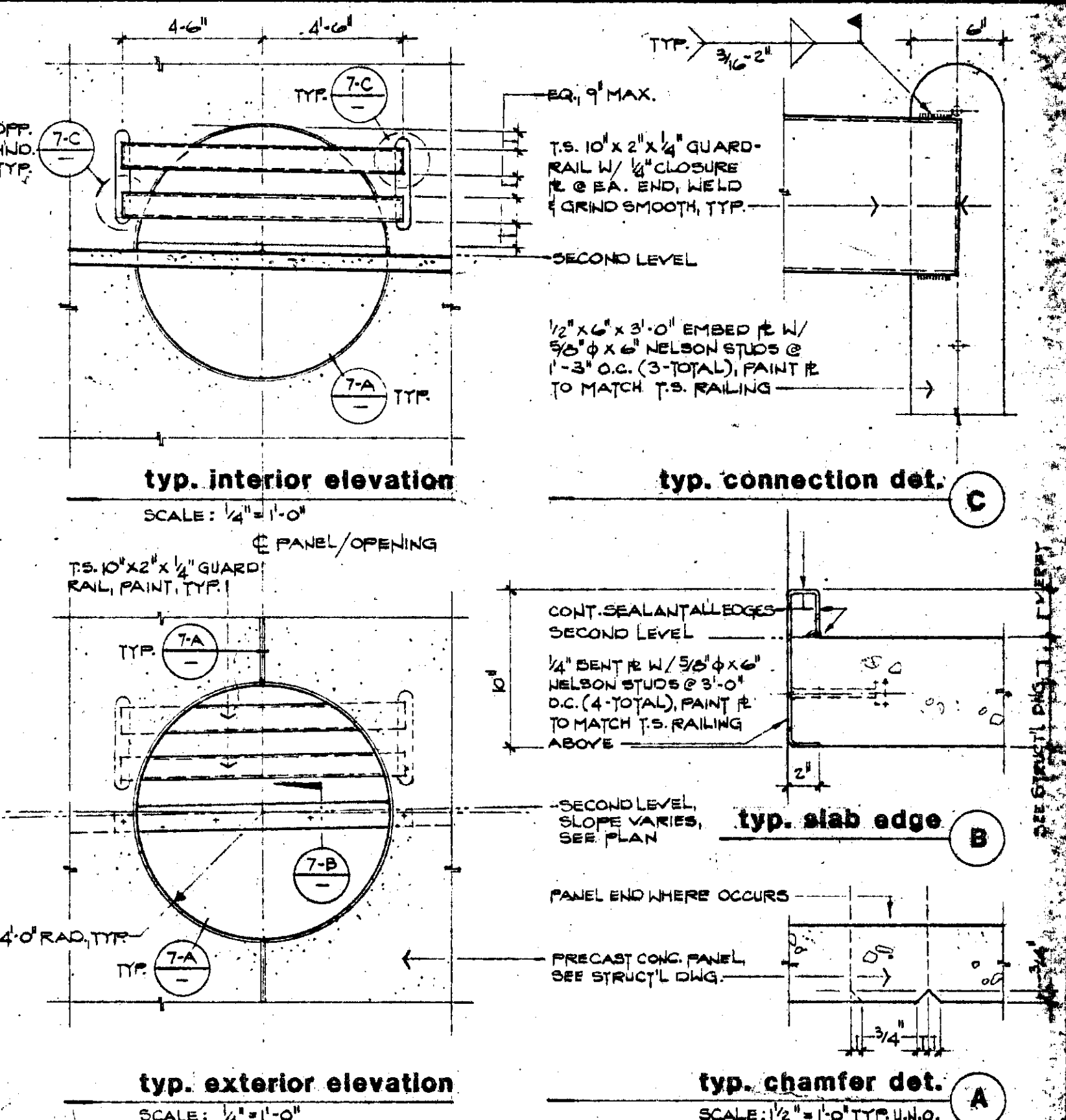
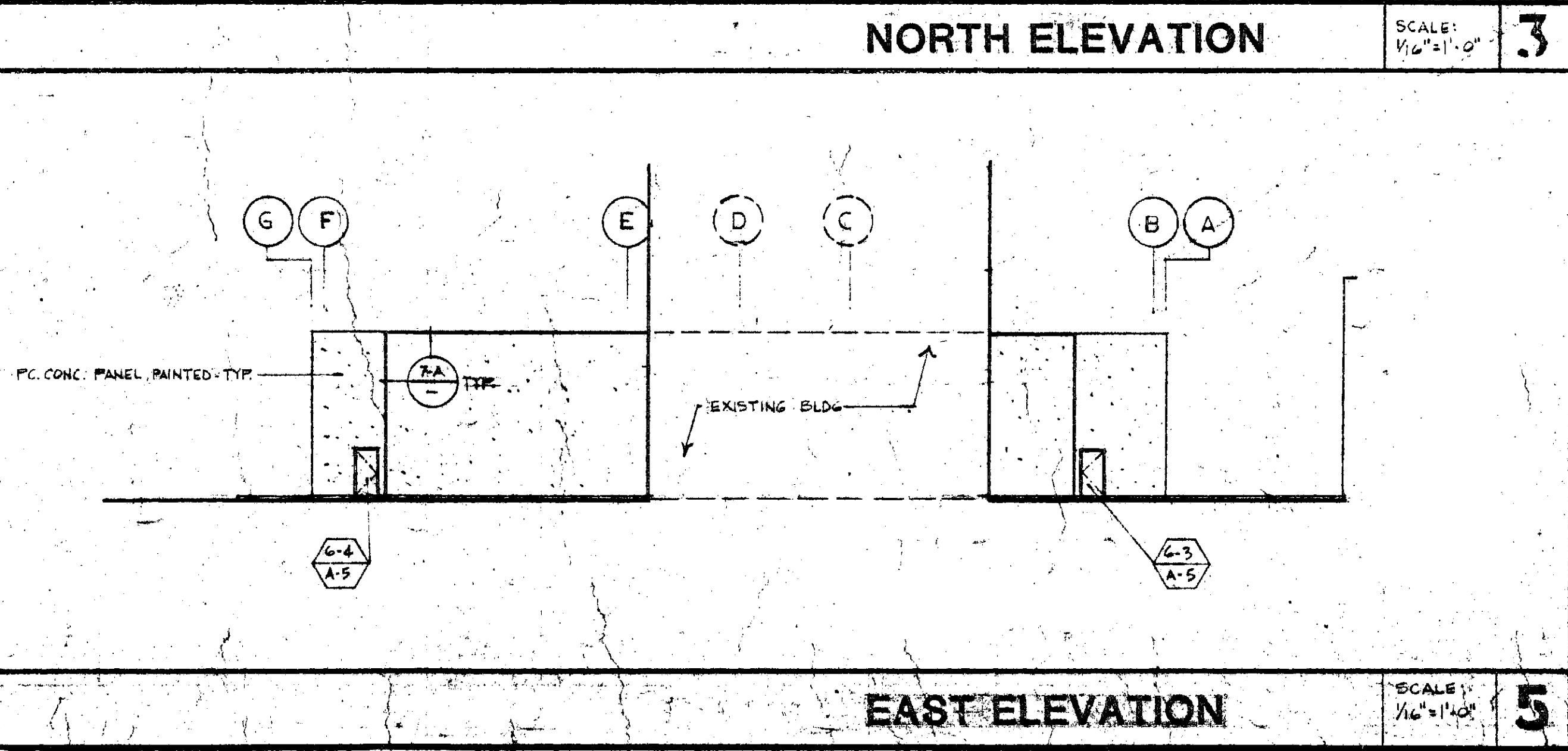
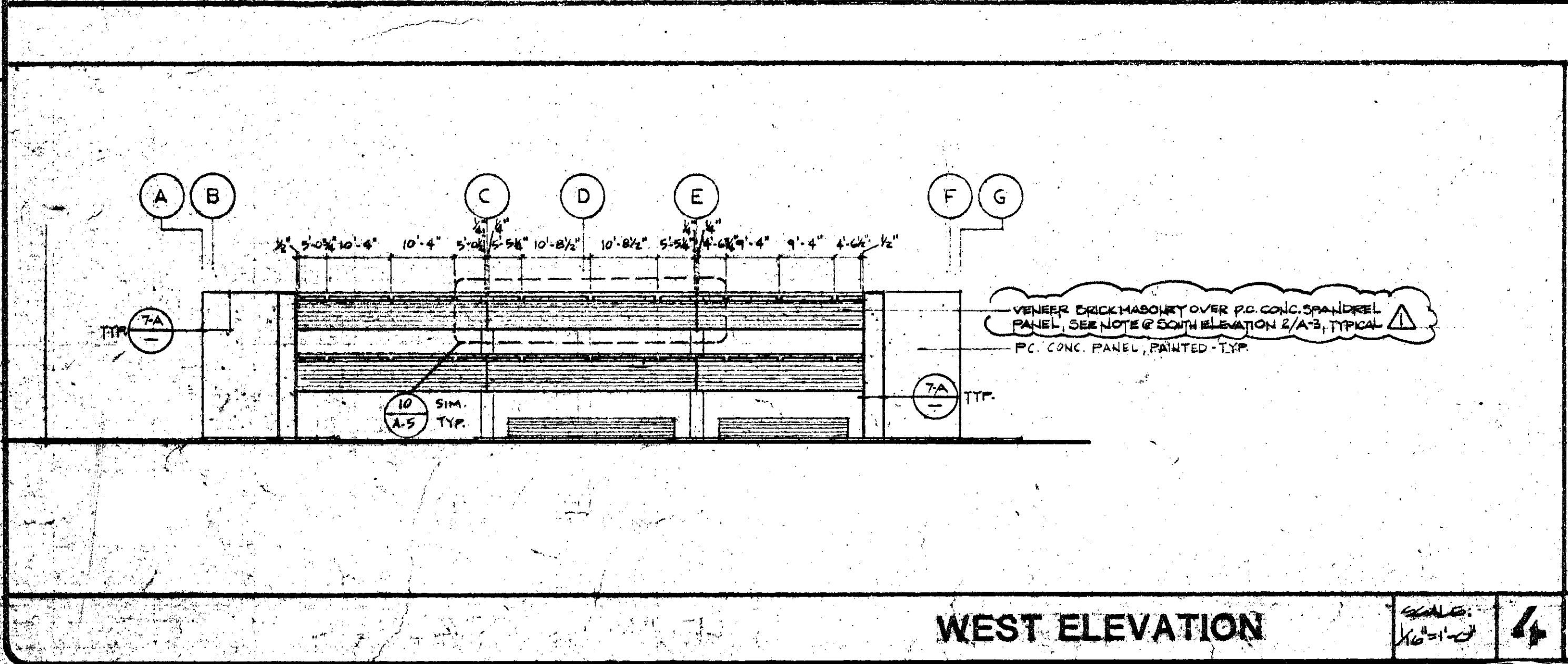
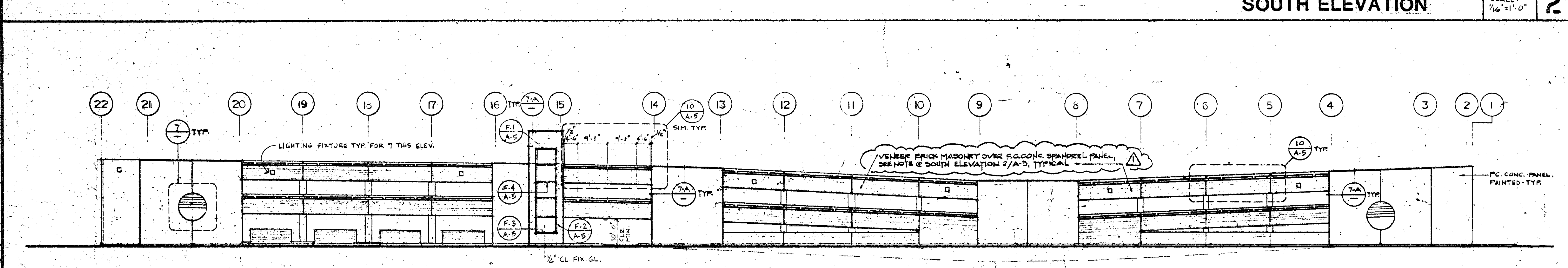
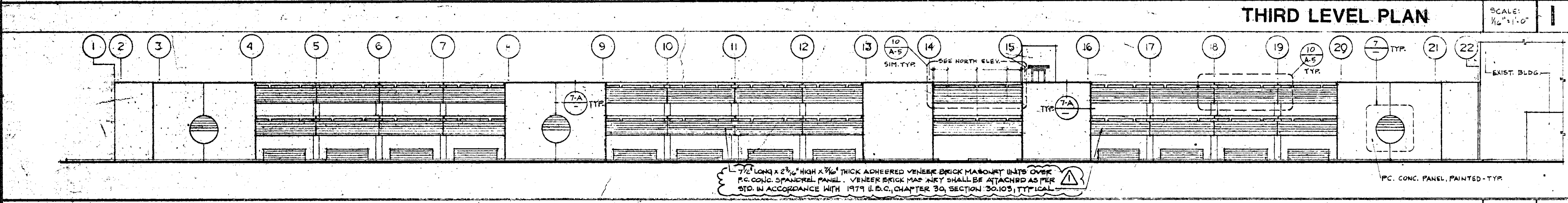
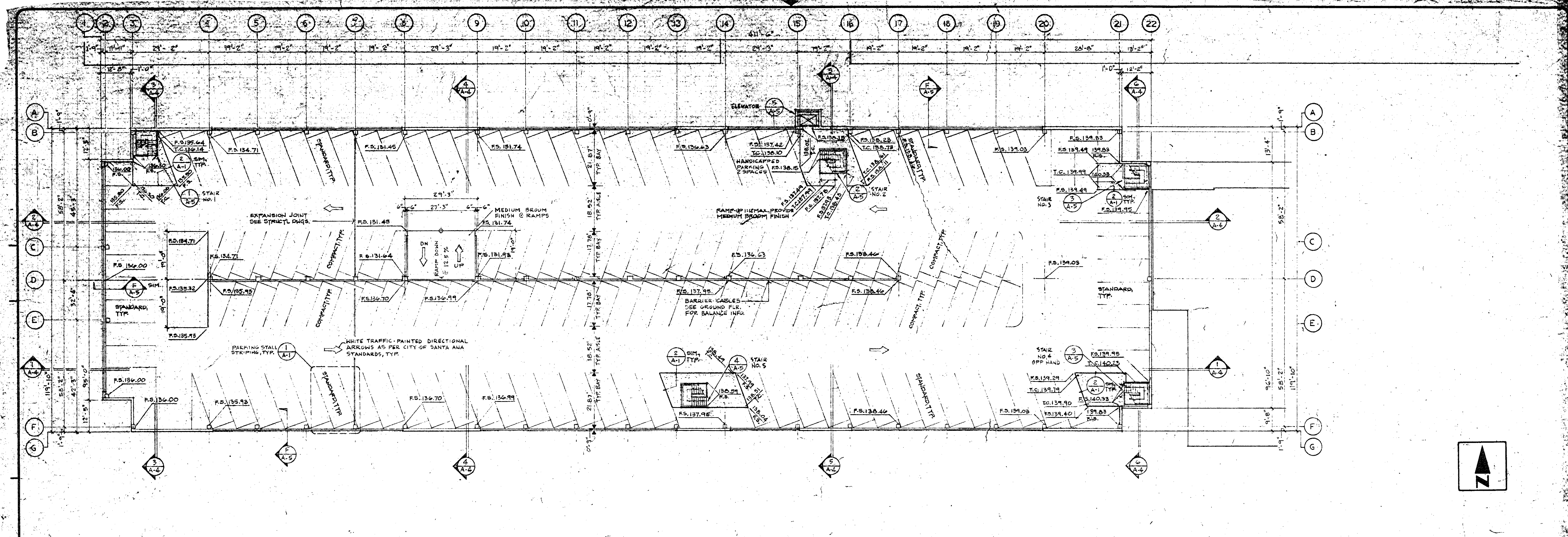
<p>ROBERT ENGLEKIRK CONSULTING STRUCTURAL ENGINEERS INC LOS ANGELES, CA 90005 (213) 385-9487 3242 W. 17TH ST., SUITE 200</p>	<p>4-1/2" DIA. CONC. DEPT. CORRECTIONS 4-8" DIA. CONC. DEPT. CORRECTIONS 4-8" DIA. CONC. DEPT. CORRECTIONS</p>
<p>DRAWN BY: [blank] ENGINEER: [blank] PID ISSUE: [blank] CONST. ISSUE: [blank]</p>	<p>SCALE: 1/8" = 1'-0"</p>
<p>GROUND AND SECOND LEVEL PLANS SANTA ANA DOWNTOWN PARKING STRUCTURE and MALL Santa Ana, California</p>	<p>JOB NUMBER: 81-114 SHEET NUMBER: A-2</p>

3 OF 21
A-3

3RD LEVEL

S.A. DOWNTOWN
PRKG. STRUCTURE

1-13-17



ROBERT ENGLEKIRK CONSULTING STRUCTURAL ENGINEERS INC. LOS ANGELES, CA 90005 (213) 385-9487

3242 W. 8TH ST., SUITE 200

THIRD LEVEL PLAN EXTERIOR ELEVATIONS

SANTA ANA DOWNTOWN PARKING STRUCTURE and MALL Santa Ana, California

JOB NUMBER: 81-114

SHEET NUMBER: A-3

OF SHEET

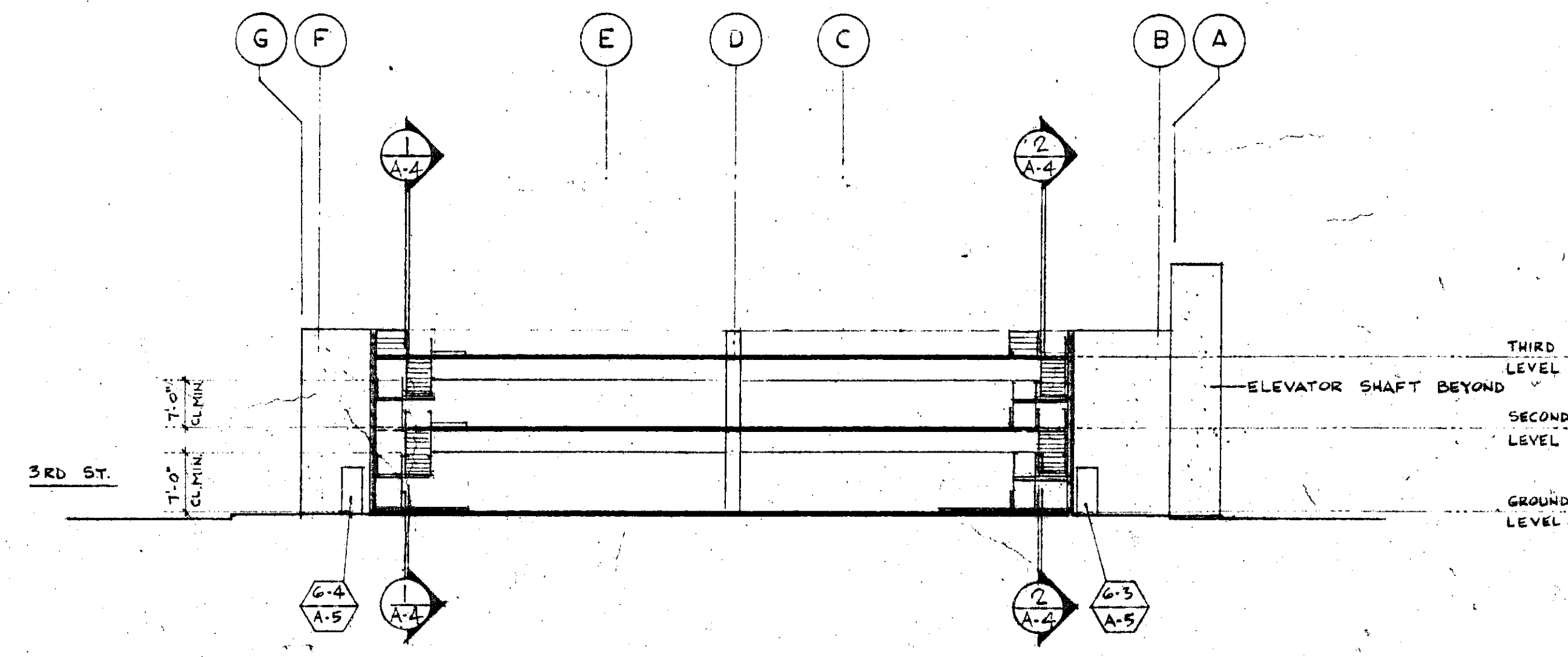
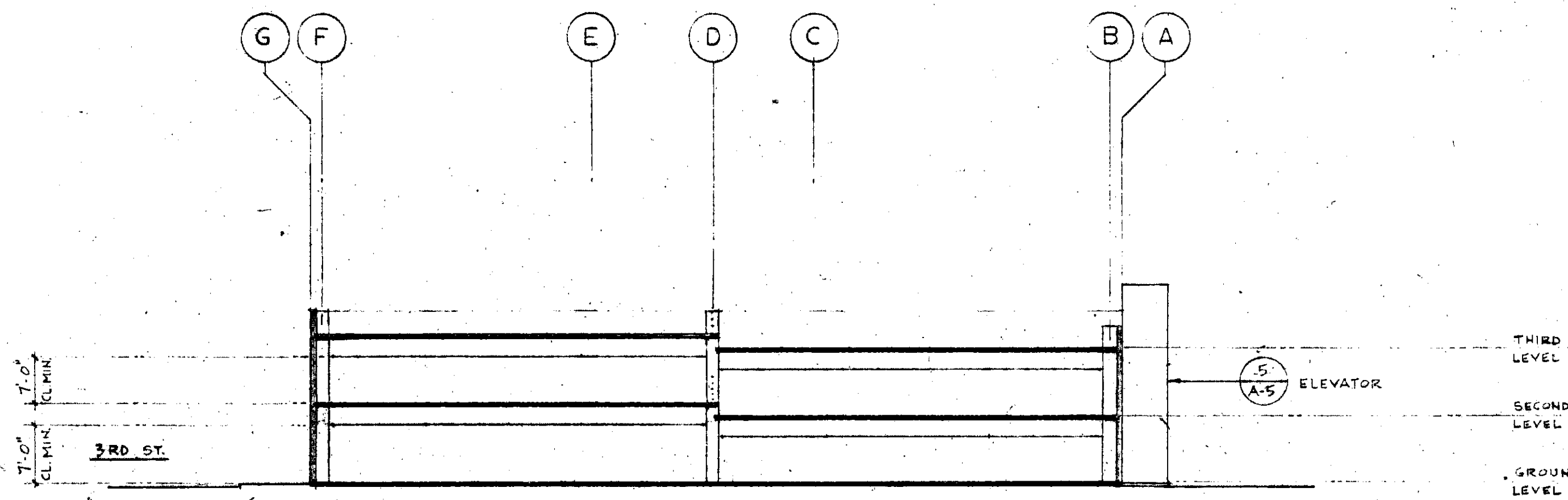
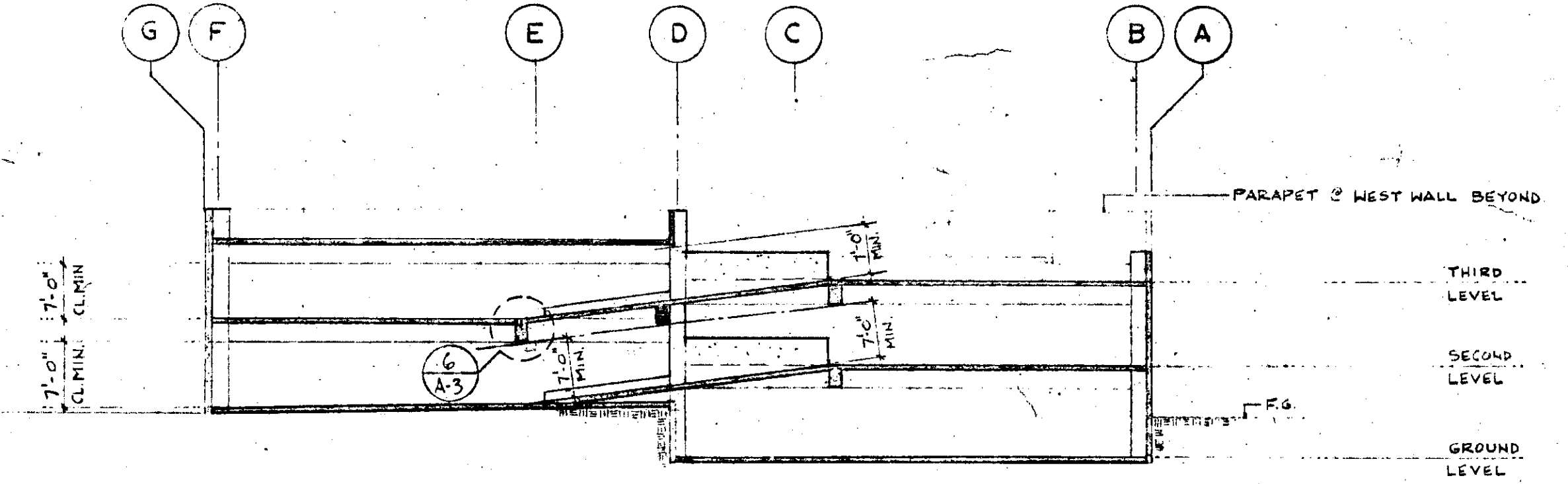
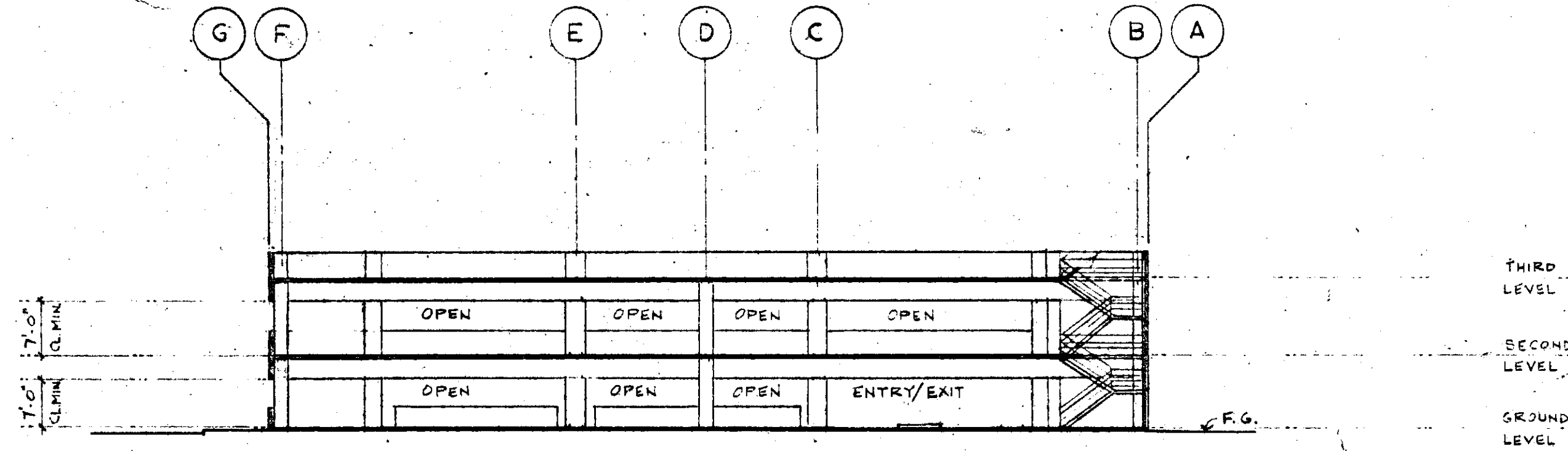
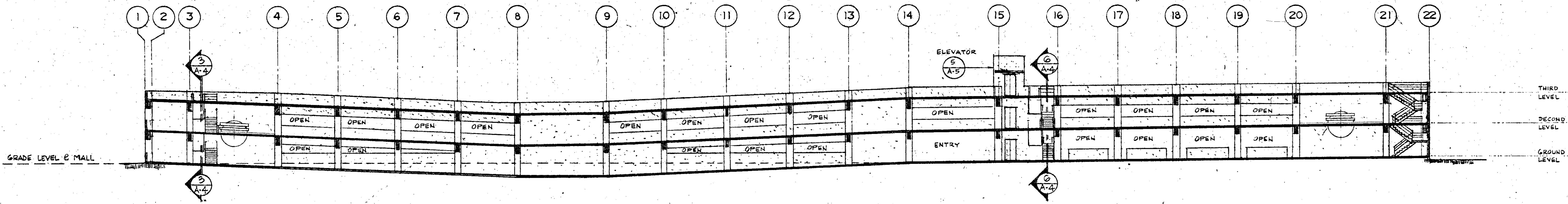
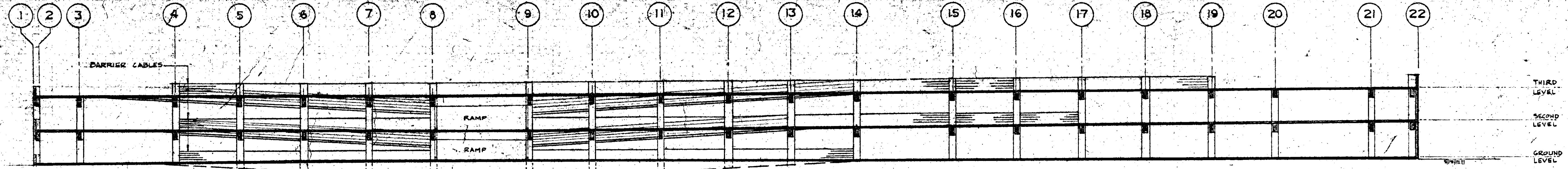
4 of 20

A-4

BLDG. SECTIONS

S.A. DOWNTOWN PRKG. STRUCTURE

1-13-17



DRAWN BY
ENGINEER
BID ISSUE
CONST. ISSUE

ROBERT ENGLEKIRK
CONSULTING STRUCTURAL ENGINEERS INC
LOS ANGELES, CA 90005 (213) 385-9487
3243 W. 8TH ST., SUITE 200



BUILDING SECTIONS
SANTA ANA DOWNTOWN PARKING
STRUCTURE and MALL
Santa Ana, California

JOB NUMBER
81-114

SHEET NUMBER
A-4

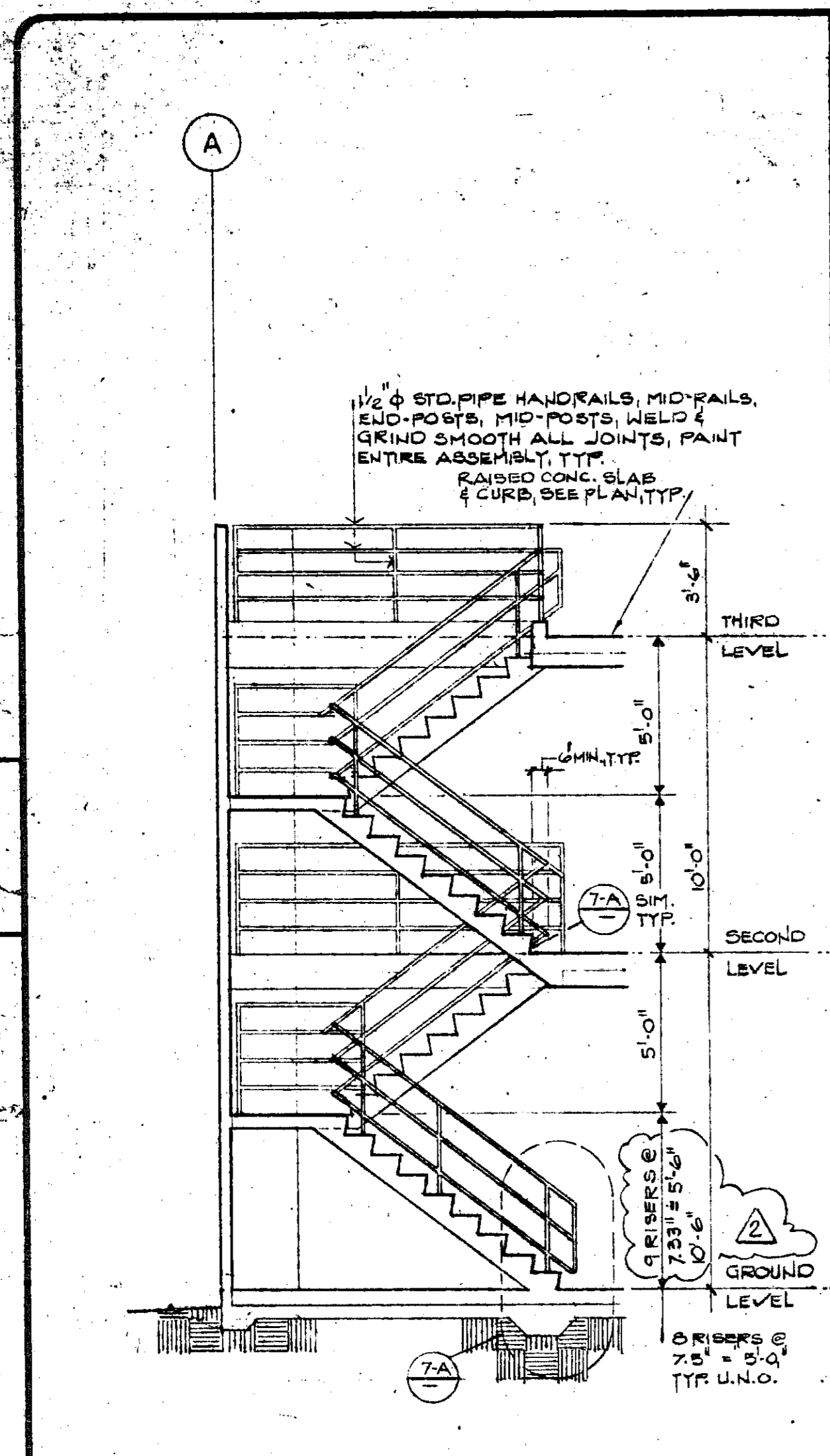
OF SHEET

5 of 21
A-5

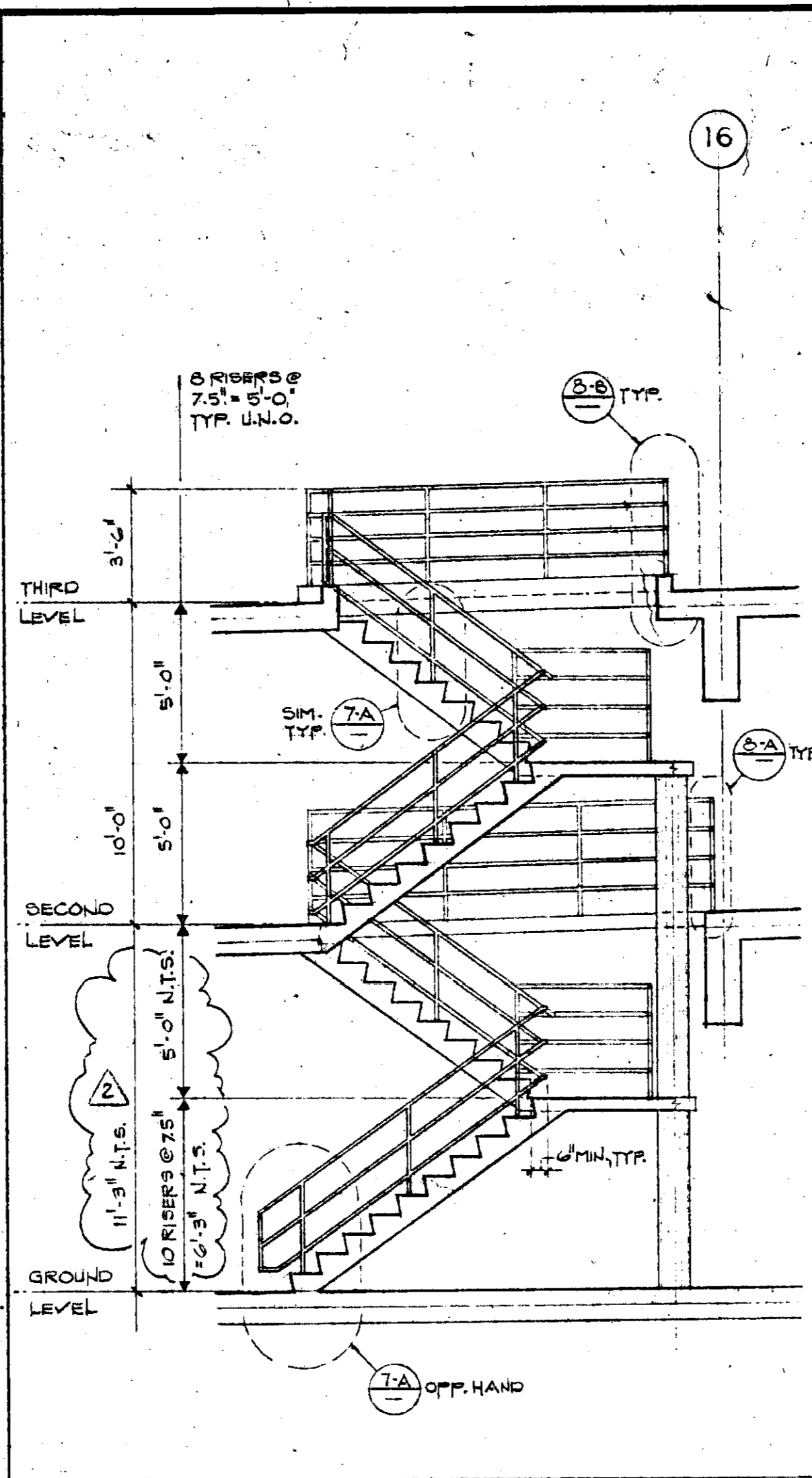
ELEVATOR
STAIRS

S.A. DOWNTOWN
PRKG. STRUCTURE

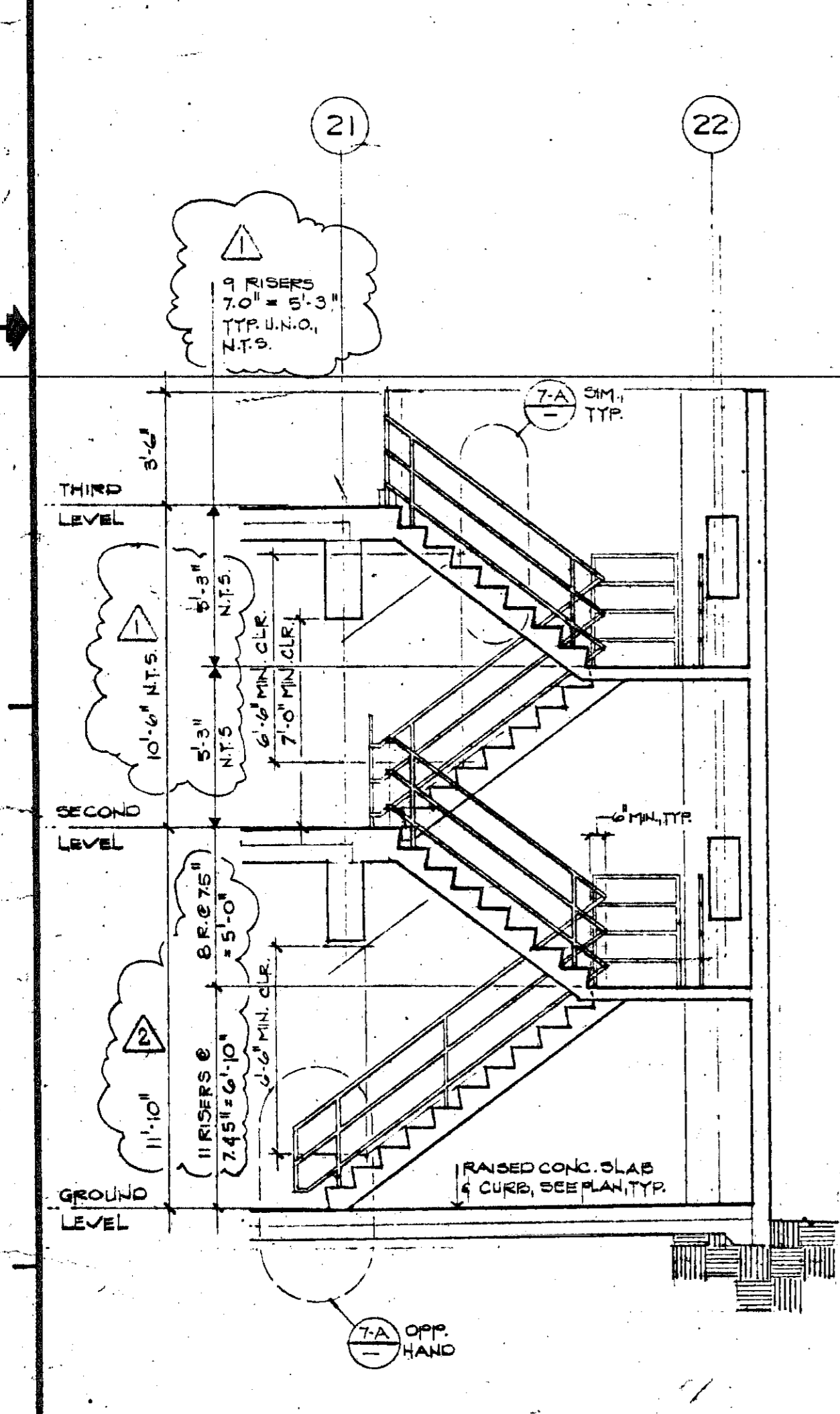
1-13-17



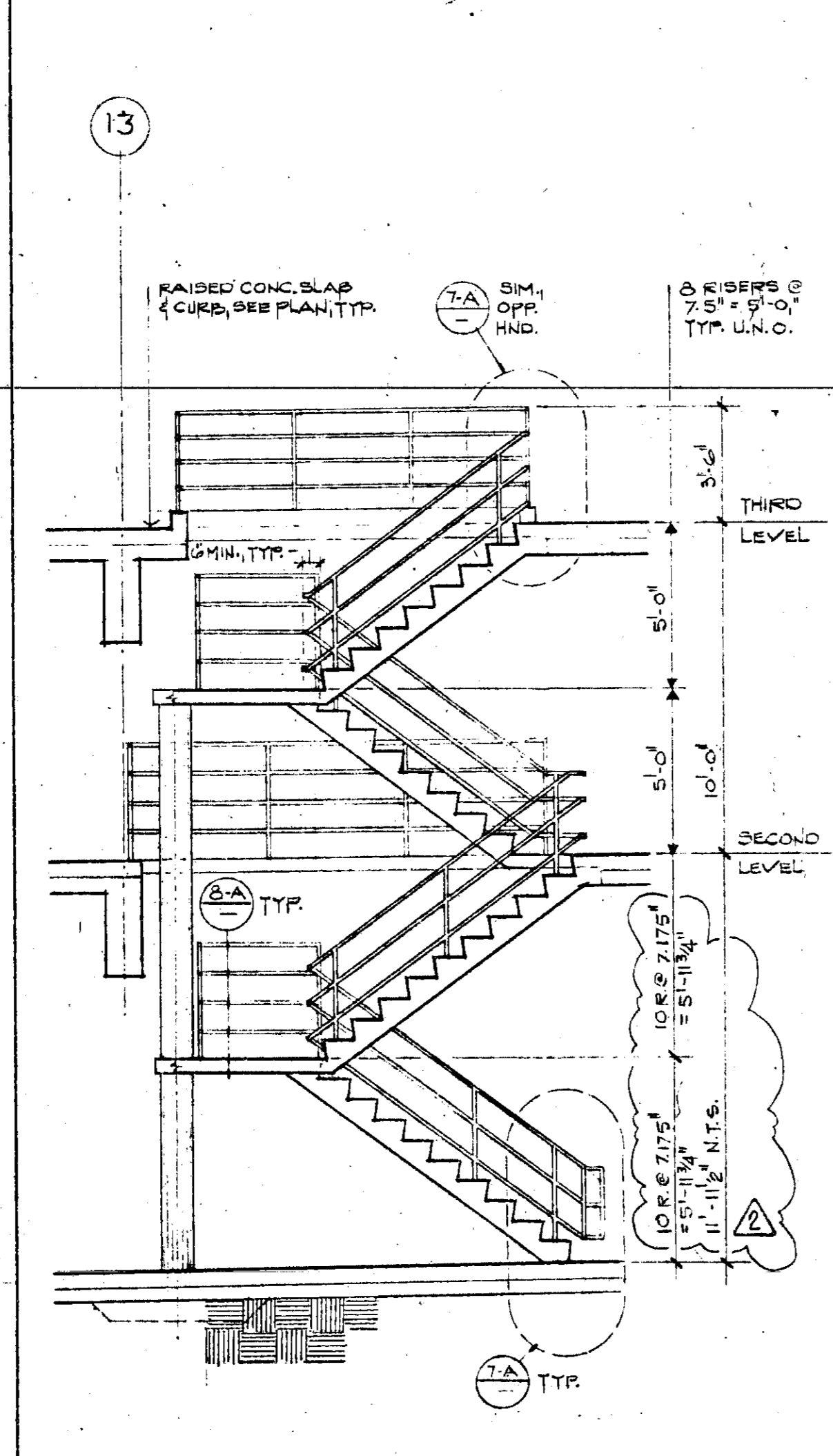
SECTION - STAIR NO. 1 SCALE: 1/4" = 1'-0" A



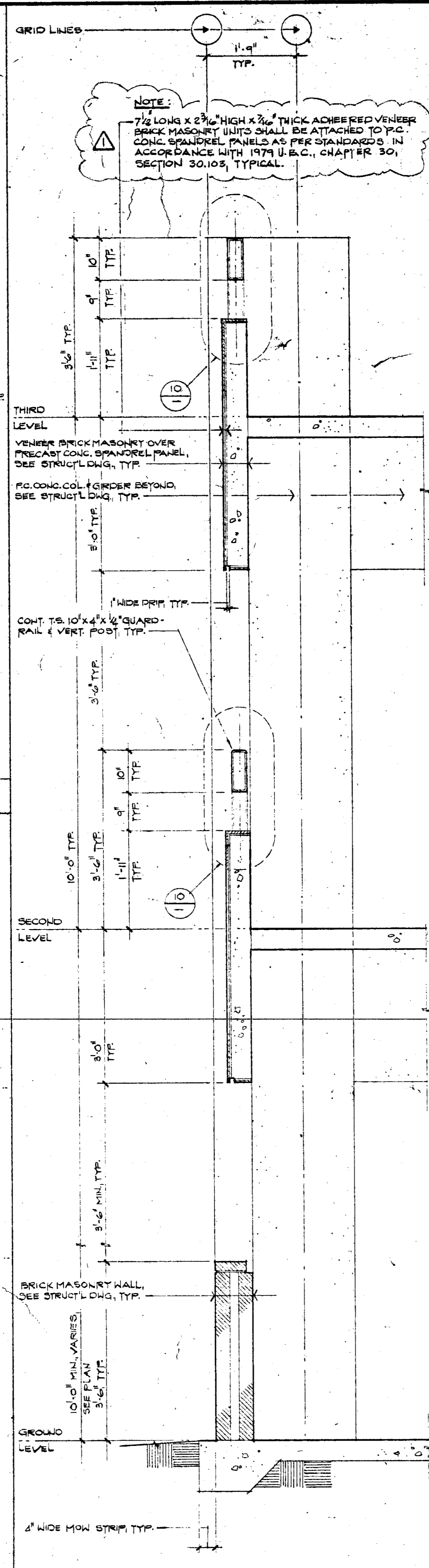
SECTION - STAIR NO. 2 SCALE: 1/4" = 1'-0" B



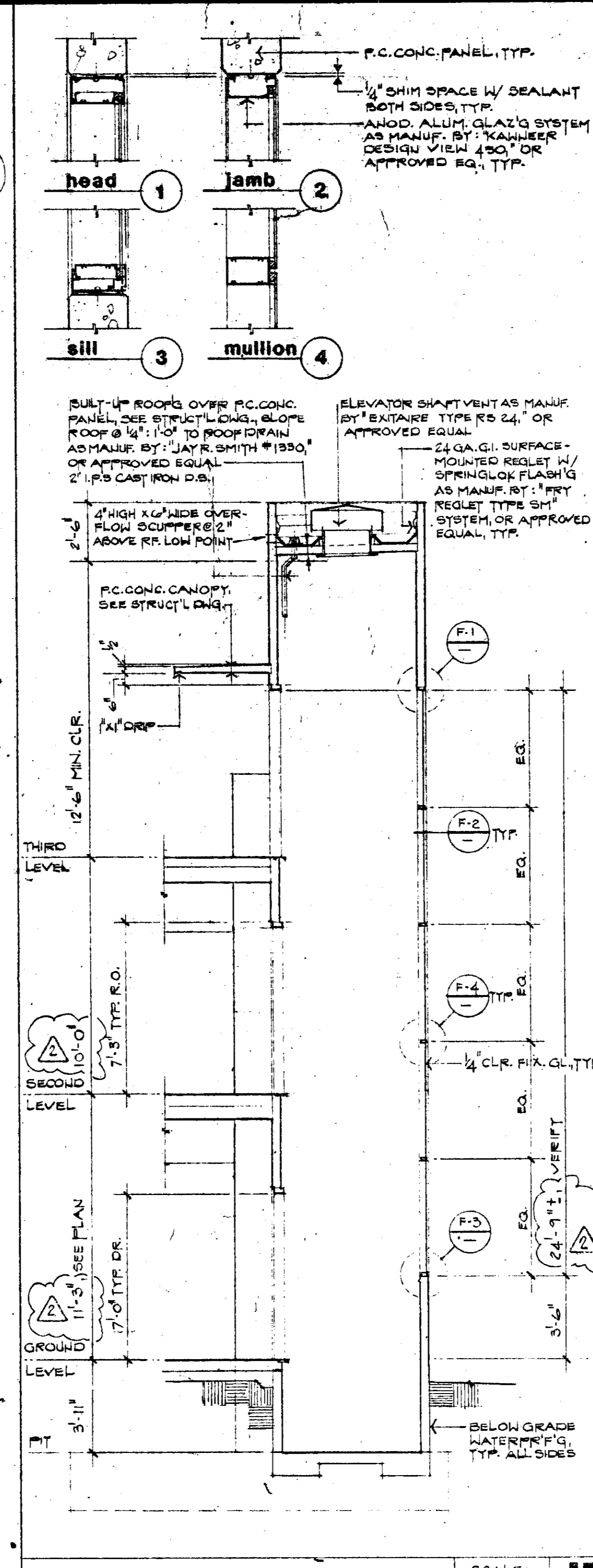
SECTION - STAIR NO. 3, STAIR NO. 4 (opposite hand) SCALE: 1/4" = 1'-0" C



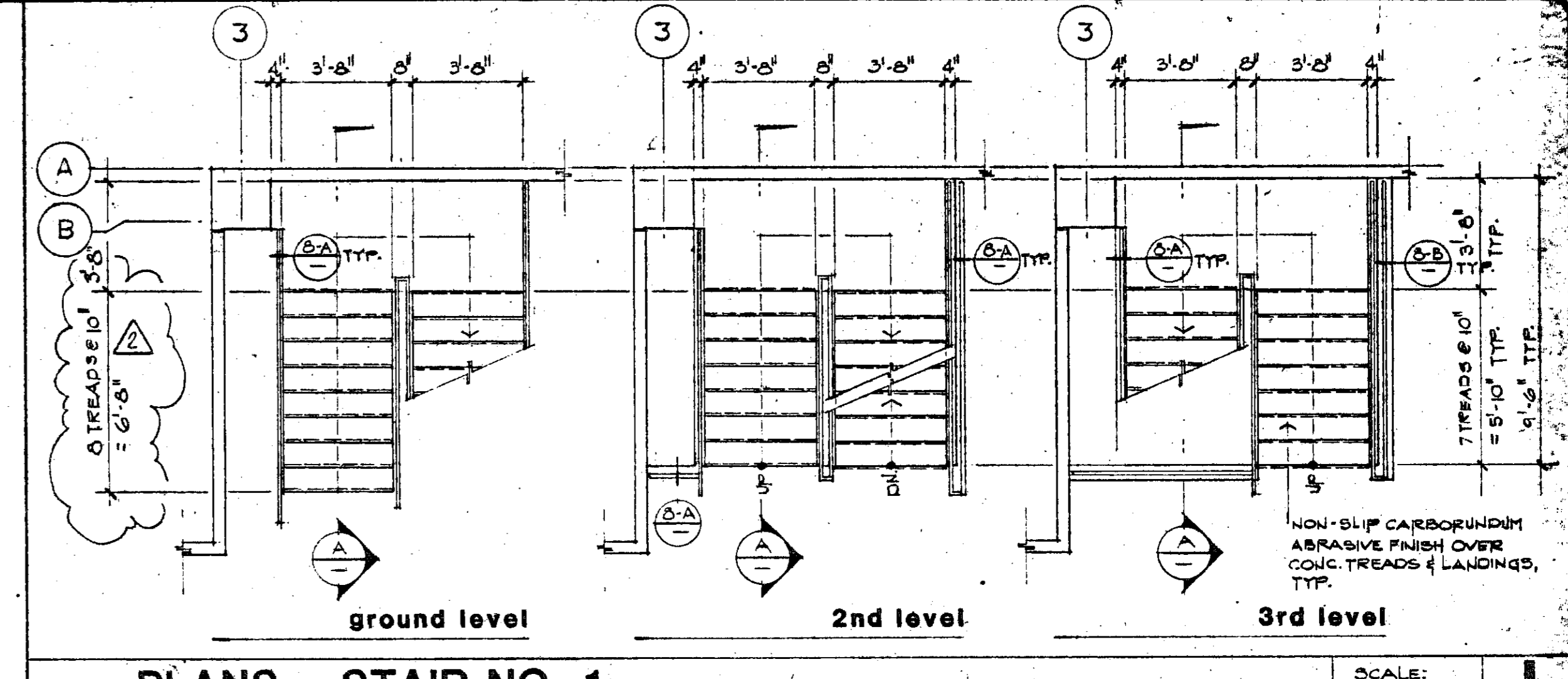
SECTION - STAIR NO. 5 SCALE: 1/4" = 1'-0" D



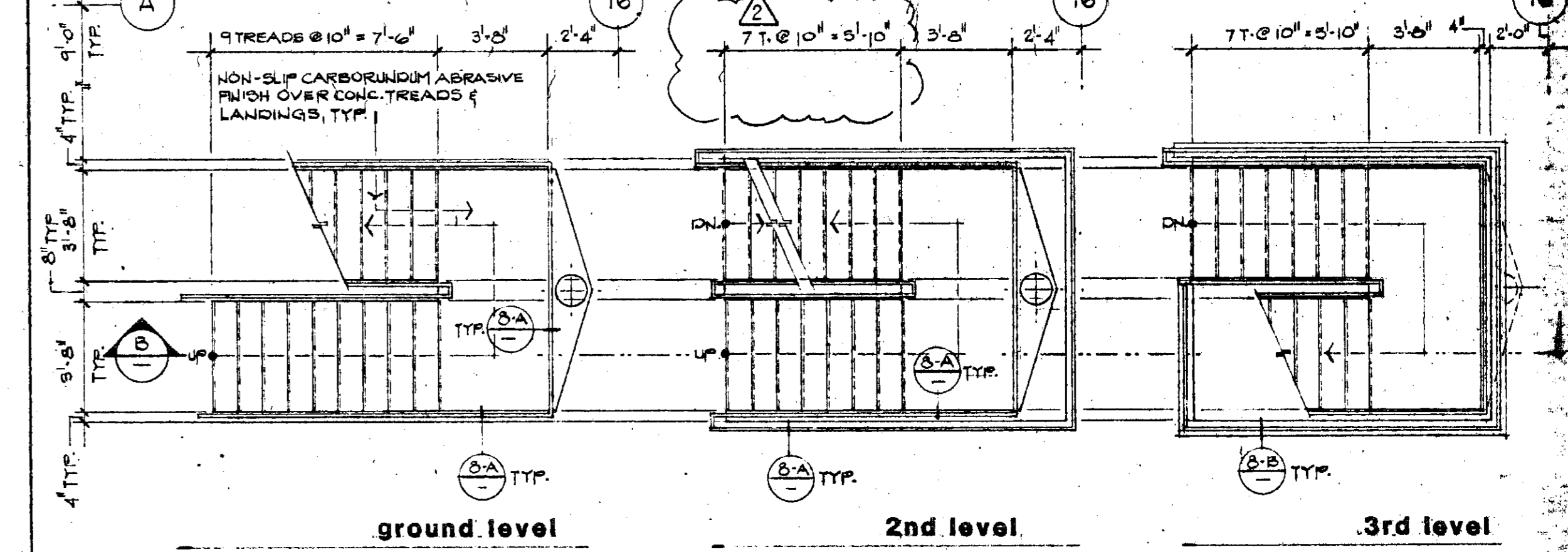
TYPICAL WALL SECTION SCALE: 1/4" = 1'-0" E



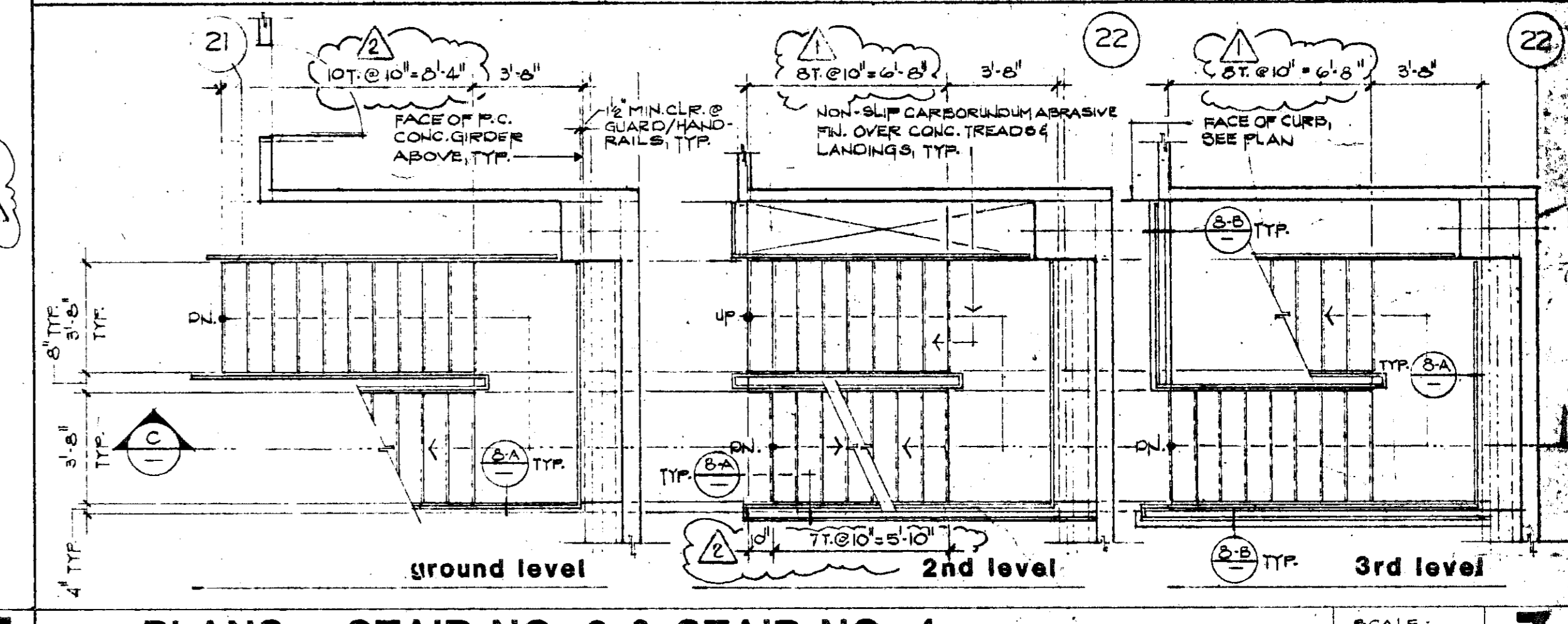
ELEVATOR SECTION SCALE: 1/4" = 1'-0" F



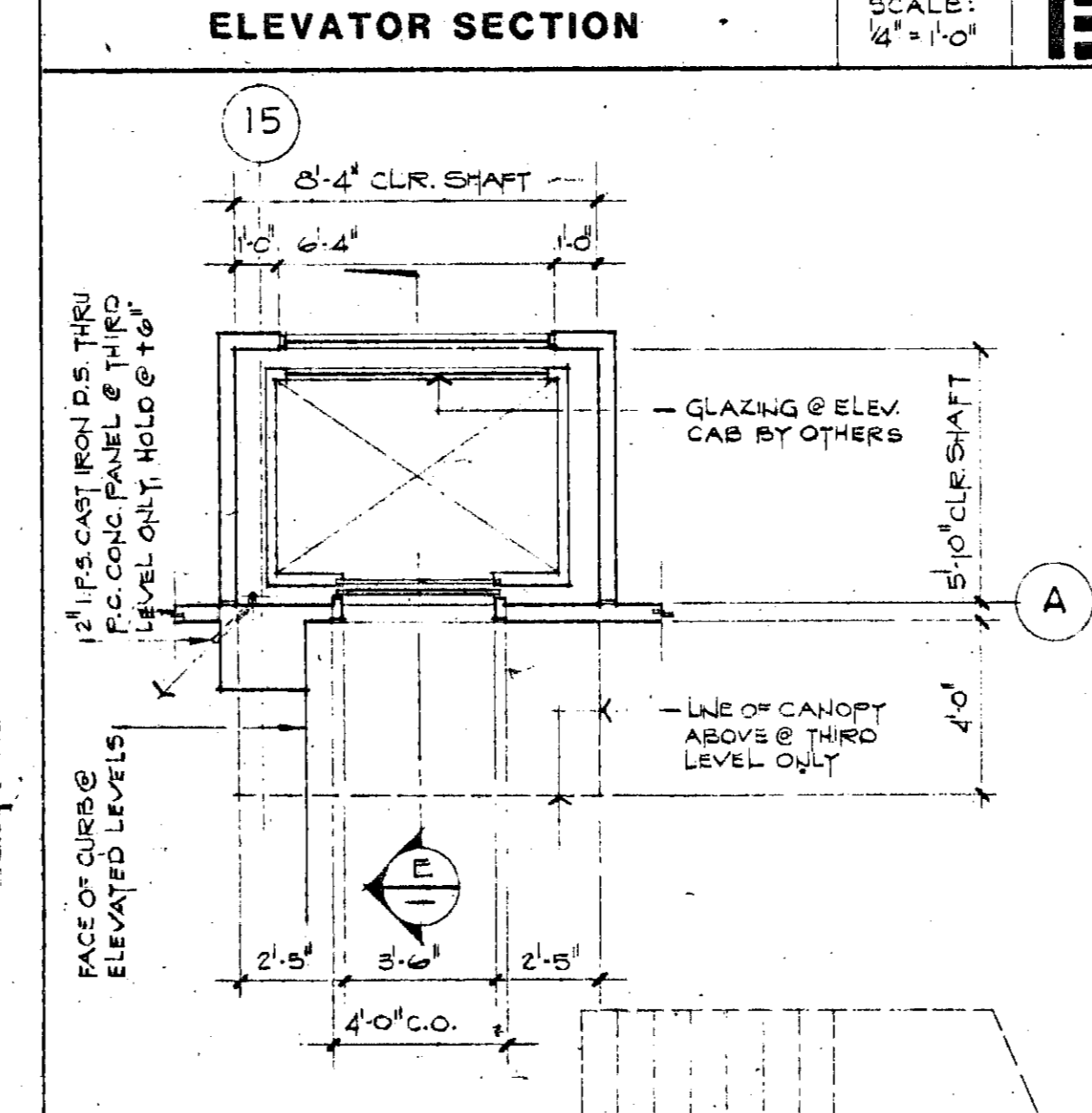
PLANS - STAIR NO. 1 SCALE: 1/4" = 1'-0" 1



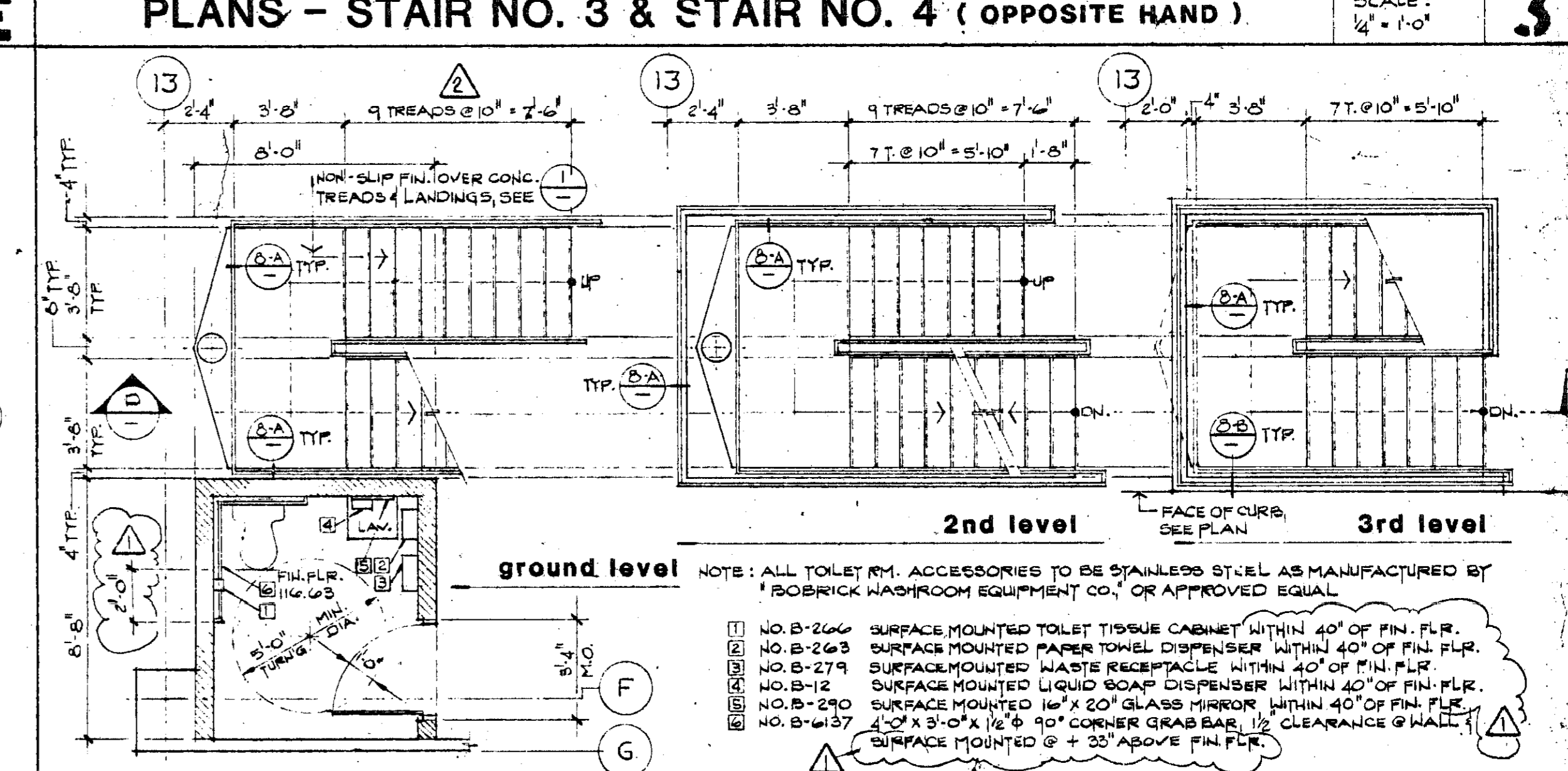
PLANS - STAIR NO. 2 SCALE: 1/4" = 1'-0" 2



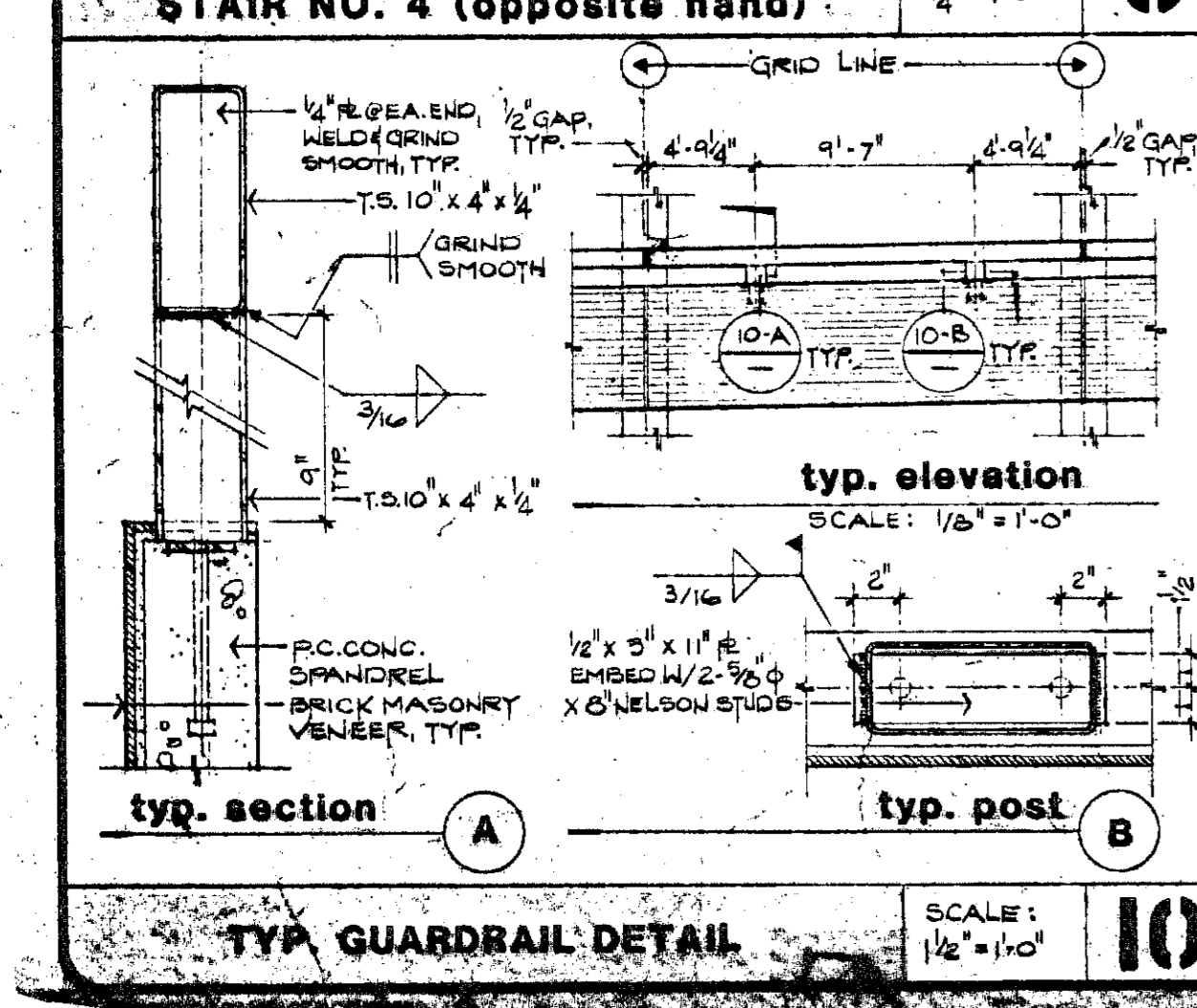
PLANS - STAIR NO. 3 & STAIR NO. 4 (OPPOSITE HAND) SCALE: 1/4" = 1'-0" 3



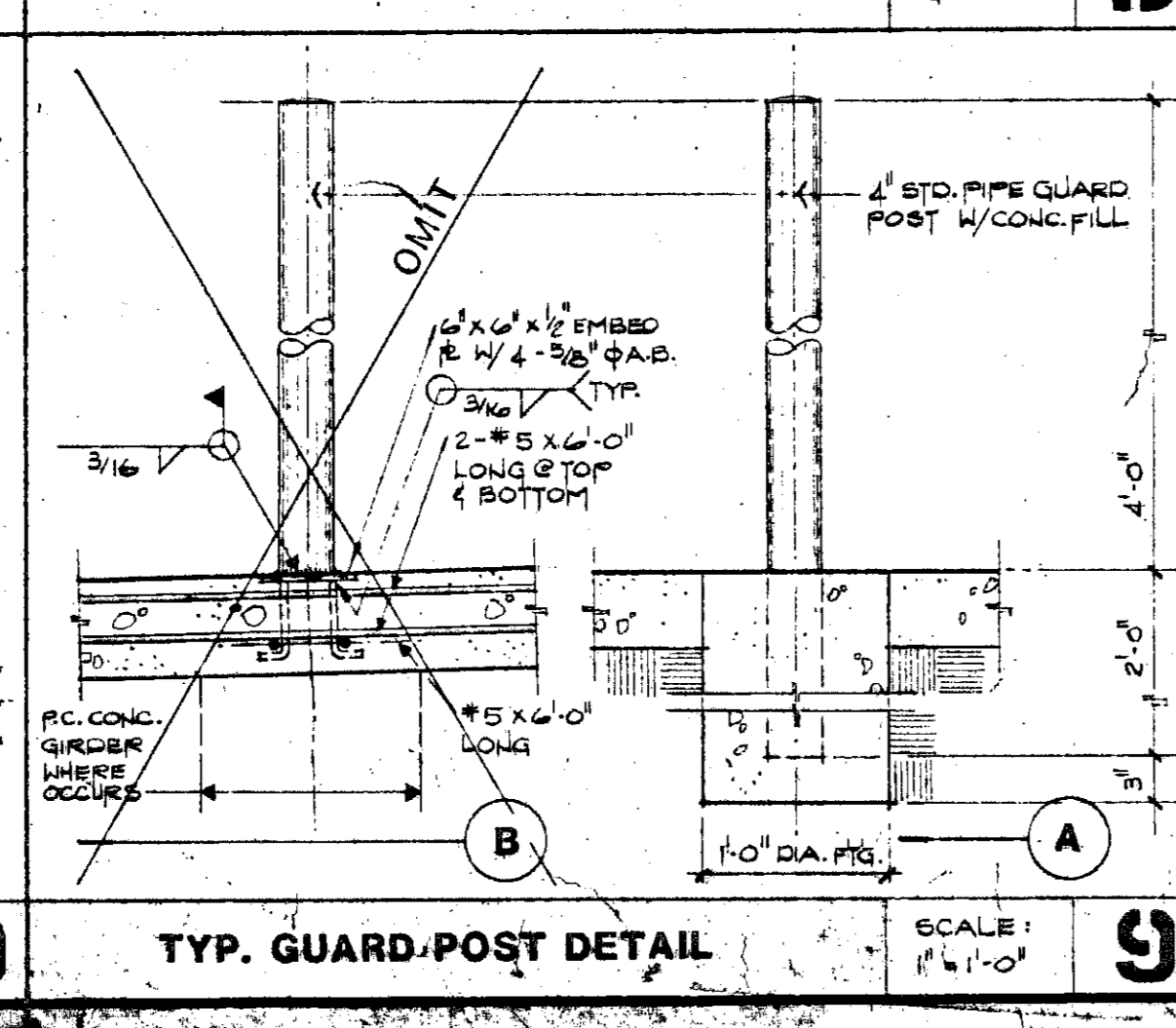
ELEVATOR PLAN SCALE: 1/4" = 1'-0" 4



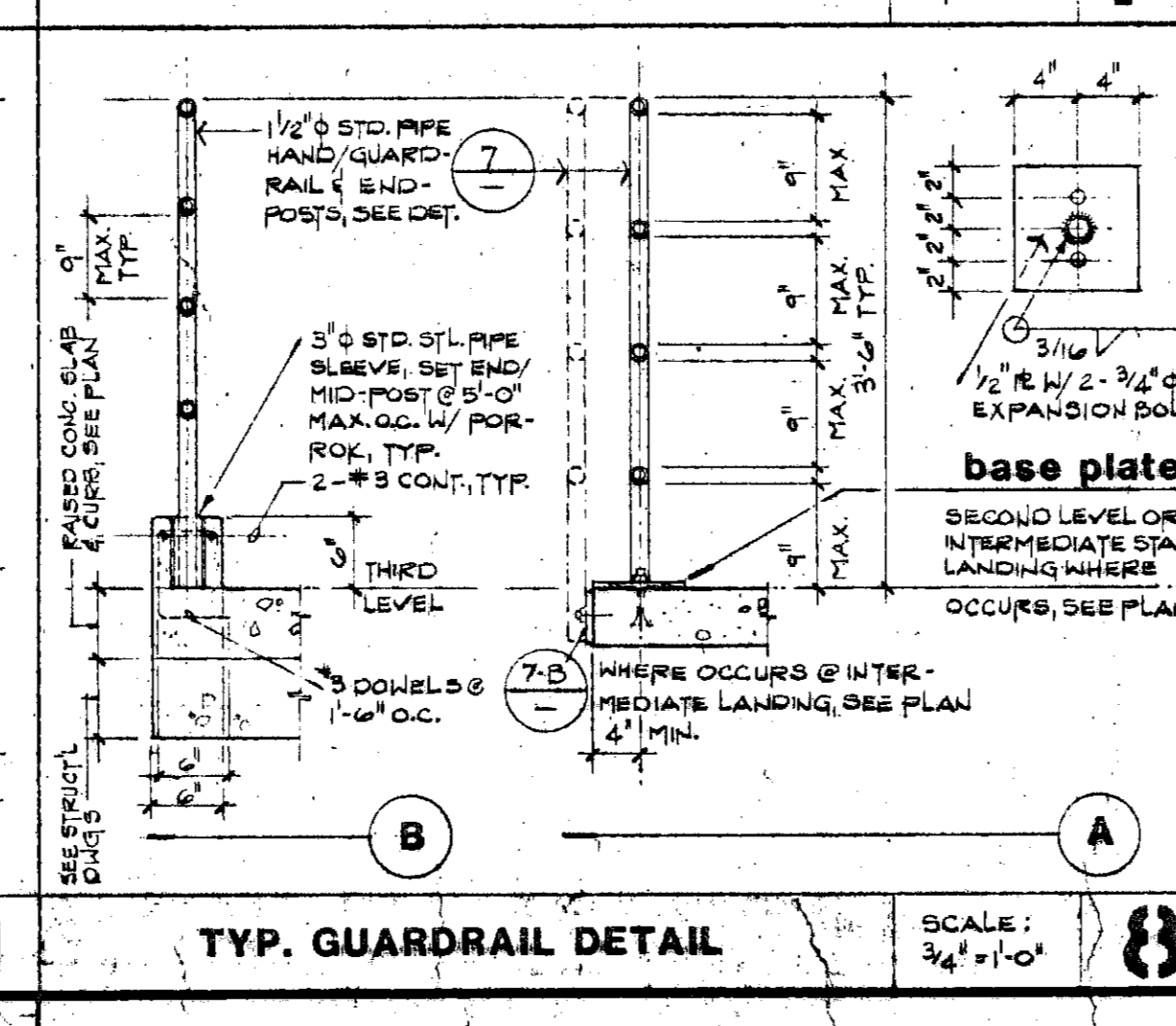
PLANS - STAIR NO. 5 / TOILET ROOM SCALE: 1/4" = 1'-0" 5



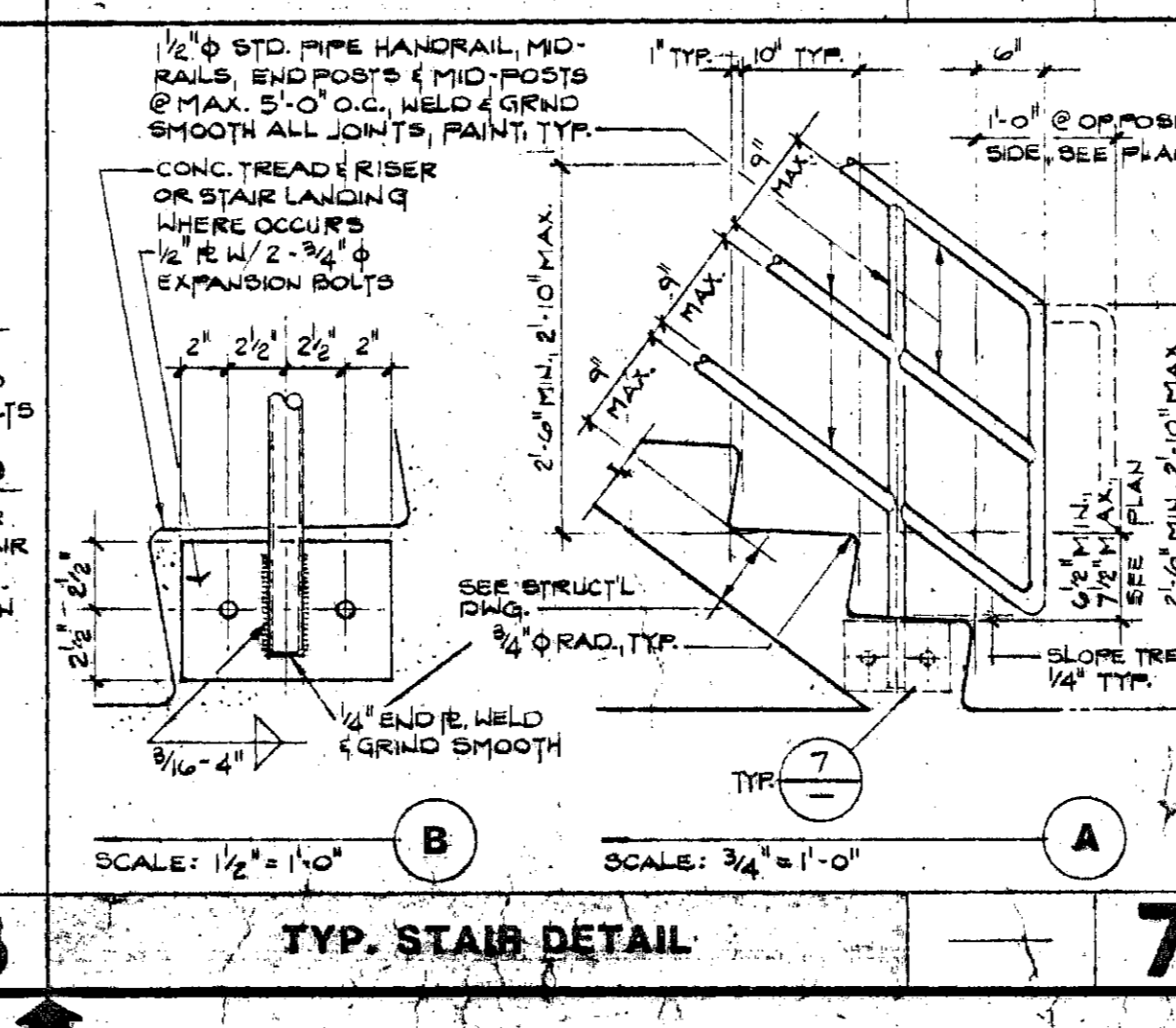
TYP. GUARDRAIL DETAIL SCALE: 1/2" = 1'-0" 10



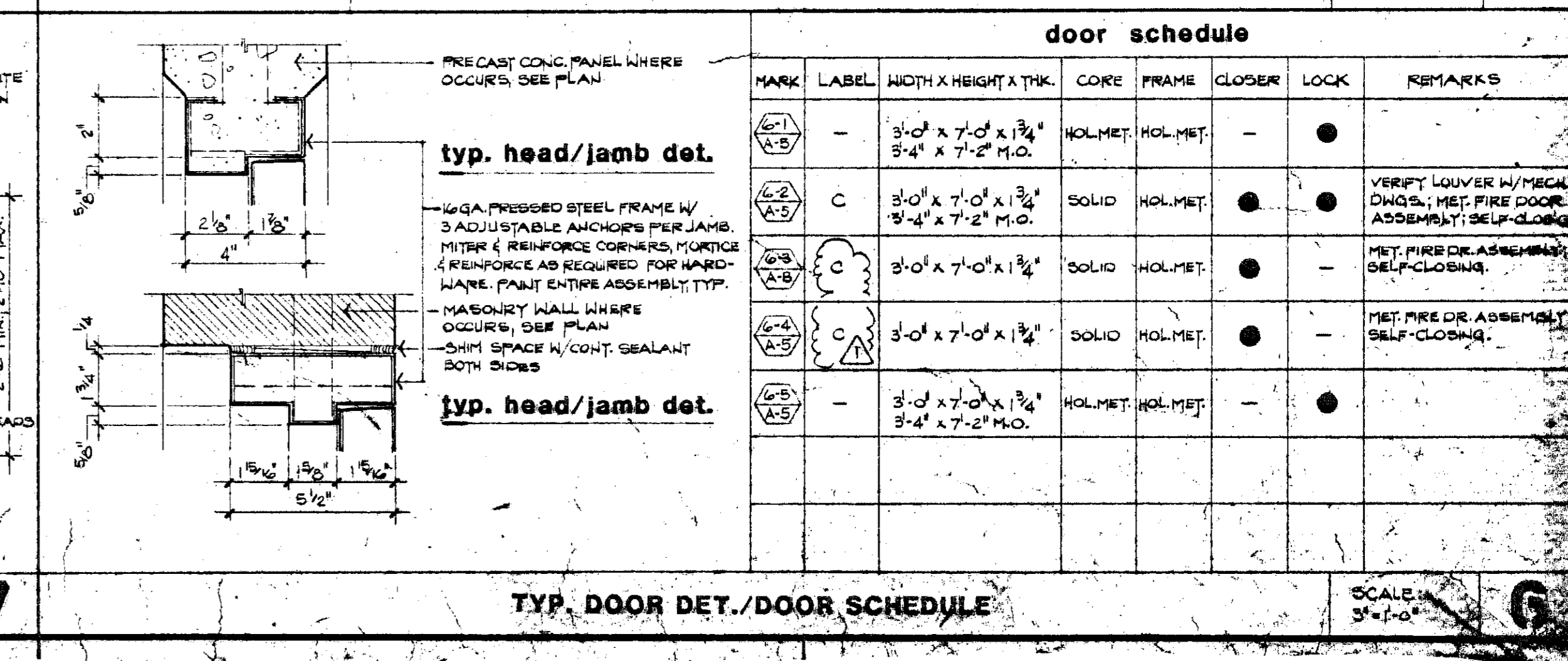
TYP. GUARD-POST DETAIL SCALE: 1/2" = 1'-0" 9



TYP. GUARDRAIL DETAIL SCALE: 1/2" = 1'-0" 8



TYP. STAIR DETAIL SCALE: 1/2" = 1'-0" 7



TYP. DOOR DET./DOOR SCHEDULE SCALE: 1/4" = 1'-0" 6

ROBERT ENGLEKIRK
CONSULTING STRUCTURAL ENGINEERS, INC.
3424 W. 8TH ST., SUITE 200
LOS ANGELES, CA 90005 (213) 985-9497

ELEVATOR/STAIR PLANS and SECTIONS
SANTA ANA DOWNTOWN PARKING STRUCTURE and MALL
Santa Ana, California

JOB NUMBER: 81-114
SHEET NUMBER: A-5
OF SHEET