

GRAND AVENUE PLAZA, LLC

August 3, 2022

Pedro Gomez
City of Santa Ana, Planning Division
20 Civic Center Plaza, Ross Annex M-20
Santa Ana, CA 92702

Re: Sunshine Ordinance Noticing Materials and Meeting Minutes for Grand Avenue Plaza, LLC's Contemplated 80-Unit Townhome Project Located at 2511, 2521 & 2525 North Grand Avenue, Santa Ana CA 92075

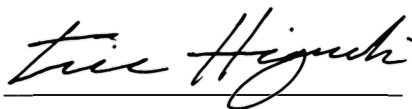
Dear Pedro,

Pursuant to the requirements of the City of Santa Ana's Sunshine Ordinance, please find attached the following noticing materials and meeting minutes related to the Sunshine Ordinance Meeting held virtually by Grand Avenue Plaza, LLC (the "Applicant") at 6:00 PM on July 6th, 2022 related to the development of 2511, 2521 & 2525 North Grand Avenue, Santa Ana CA 92075 as a contemplated 80-unit, residential townhome project.

1. Contact List and Corresponding 1,000-foot Radius Map;
2. Community Meeting Flyer (English & Spanish);
3. Proof of Payment of Mailing of Notices;
4. Affidavit/Proof of Publication of the Meeting Notice;
5. Meeting Minutes from the July 6th Sunshine Ordinance Meeting;
6. Virtual Meeting Attendee List; and
7. Presentation Slides.

I confirm, under penalty of perjury, that Grand Avenue Plaza, LLC conducted the above referenced community meeting, as required by the Sunshine Ordinance, and that the attached materials listed above are true, accurate and correct to the best of my knowledge.

Regards,



Eric Higuchi

Attachment 1

Meeting Minutes from the July 6th Sunshine Ordinance Meeting

MEETING MINUTES
GRAND AND GROVEMONT PROJECT
SUNSHINE ORDINANCE COMMUNITY MEETING
VIRTUAL MEETING
JULY 6, 2022; 6:00 PM

A Sunshine Ordinance Meeting was held by Grand Avenue Plaza, LLC (the “Applicant”) on Wednesday, July 6th, 2022 at 6:00 PM related to its contemplated 80-unit, townhome development (the “Project”) on 3.75-acres located at 2511, 2521 & 2525 North Grand Avenue, Santa Ana CA 92075 (the “Property”). A development application was submitted to the City of Santa Ana on June 14, 2022.

The Sunshine Ordinance Meeting was held virtually and was conducted in English. Spanish translation services were made available but were not requested by any attendees. The attendee report data indicated there were 21 participants including: 1 host; 18 individuals registered via on-line; and 2 individual who joined via dial in.

These minutes reflect major comments only and do not provide a complete transcript of the meeting. An audio recording of the entire meeting is available at the link below:

https://drive.google.com/file/d/1zdXhlj5IHEmRgEzPQi3r_Rc2LWmDyFFo/view

Attendees

- Applicant:
 - Eric Higuchi, Grand Avenue Plaza, LLC (Manager)
 - John Chen, Grand Avenue Plaza, LLC (Manager)
 - Bryan Leon, Grand Avenue Plaza, LLC (Associate and Spanish Interpreter)

- City of Santa Ana:
 - Pedro Gomez, Senior Planner
 - Ali Pezeshkpour, Principal Planner

- Attendees
 - Mary Lou Branch
 - Connie Barin
 - Angelo
 - 714-402-2582
 - Jill
 - Dale
 - Melissa Rodriguez
 - Craig Fromm
 - Gene
 - Isuri Ramos
 - Darcie Cancino
 - 714-955-3368
 - Margarita
 - Pena Barbara

- Carol Slaton
- Fabiola

Introduction & Presentation

The contemplated Project was presented in English by Eric Higuchi. The presentation consisted of:

- Applicant Introduction and Direct Contact Information;
- Previous Activity and Involvement in the City of Santa Ana;
- Project Description, Location, and Existing Conditions;
- Entitlement Summary;
- Site Plan and Landscape Plan;
- Community Benefits;
- Community Economic Benefits; and
- Community and City Engagement Efforts to Date.

Question and Answer Period

The Applicant's minutes reflect its verbal response to questions presented during the meeting. However, while generally accurate, the responses have been summarized for clarity. The exact responses can be heard in the audio recording provided in the link above.

Questions Generated Via Text Through the Online Chat

- Craig Fromm (2:05) - Traffic is one of my primary concerns. Are there any plans to mitigate the large backup that always happens on the Grand & Fairhaven intersection as people queue up to get on to the 22 West?
 - Response: *The congestion at the Grand Avenue and Fairhaven Avenue intersection related to the Hwy 22 on ramp is a regional issue that would need to be addressed a California State Agency like CalTrans.*
- Dale (2:16) - Are you assisting the existing businesses in relocation?
 - Response: *Yes. We have kept rents below market during this transition period and have connected our tenants with a local real estate broker. Further, tenants will not have to move out for at least six months.*
- Dale (2:17) - Will there be a limit on how many units can be rented after they are all sold?
 - Response: *While typical homebuilder Conditions, Covenants and Restrictions ("CC&Rs") generally do not allow rentals, the enforcement of those CC&R's will ultimately be the responsibility of the HOA.*
- Craig Fromm (2:18) - What about AirBnB rentals?
 - Response: *Similar to the response about rentals, CC&Rs generally do not allow vacation rentals, and the enforcement of those CC&R's will ultimately be the responsibility of the HOA. However, vacation rentals are typically publicly listed. Accordingly, the City and the HOA will be better able to enforce their respective regulations.*
- Darcie Cancino (2:20) - Will the slides be available later? Cannot read them, too small.

- Response: *I believe the slides will be available on the City's Sunshine Ordinance Website.*
- Isuri Ramos (2:26) - Will there be an in-person meeting sunshine ordinance meeting for community members that have difficulty using computers/phones?
 - Response: *Yes. We will have two addition sunshine ordinance meetings.*
- Craig Fromm (2:28) - Have you evaluated the downward pressure on housing prices in the adjacent properties? The city took complaints from the residents but it didn't have any significance.
 - Response: *We have not witnessed downward pressure on housing prices related when new homes are constructed nearby.*
- Dale (2:28) - Have you personally witnessed Grand Ave traffic during the morning commute?
 - Response: *Yes.*
- Isuri Ramos (2:34) - Can you please clarify how many total in person meetings there will be before this project goes to the Planning Commission
 - Response: *There will be two additional meetings.*
- Connie Barin (2:36) - From the drawing, there doesn't seem to be an alley on the further most east side of project... correct?
 - Response: *There is a 20' setback from the property wall to the building.*
- Craig Fromm (2:37) - How long is the construction going to last?
 - Response: *Construction will last 12 to 18 months. (Note: this question was not responded during the Q&A period).*
- Darcie Cancino (2:39) - So a four-bedroom home could have 40 people living in it, legally?
 - Response: *We do not know the legality of allowing 40 people (10 people per bedroom) living in a single unit. (Note: this question was not responded during the Q&A period).*

Vocalized Questions

- Will there be grass and picnic tables in the alley between the eastern wall and the buildings? If so, that area could generate noise if people utilize it for dining or recreation.
 - Response: *We will consider designing a more passive space.*
- Does the City of Santa Ana's law allow 10 individuals per bedroom?
 - Response: *If there are 10 individuals residing in each bedroom, this will certainly create noise and parking issues that would devalue the property.*
 - Supplemental Response: *However, I do not believe it is within the scope of this project to regulate max occupancy. Accordingly, it would be up to the City and the HOA to regulate the maximum number of occupants in each unit.*
- Dale: What is the configuration windows on the side of the buildings on the east side of the property? Will they be looking down into the property?

- Response: *The first and second floor will have large standard windows. The third floor will not have large windows looking down into the property. There will be smaller, bathroom windows on the east side of the property and smaller windows to allow in light.*
- Will the wall be extended higher on the east side?
 - Response: *It depends as existing shared walls are difficult to address in urban infill projects. Right now, we are contemplating keeping the wall in place.*

Attachment 2

Community Meeting Flyer (English & Spanish)

Red Rock Realty Investment
3121 Michelson Drive, Suite 200
Irvine, CA 92612
(949) 290-7510 | www.redrockri.com

Grand Avenue Plaza LLC & Red Rock Realty Investment
Cordially invites you to a community information meeting for:

Grand and Grovemont

*A For-Sale, Townhome Development at
2511, 2521 & 2525 North Grand Avenue, Santa Ana, CA 92075*



Grand and Grovemont will be a new, for sale townhome development. Please come and share your thoughts and ideas about this new housing development for families. At the meeting, we will provide general information, answer questions, and solicit input on the housing proposal.

MEETING DATE AND TIME

Wednesday, July 6, 2022

6:00 PM to 7:00 PM

MEETING LOCATION: VIRTUAL CONFERENCE CALL

[HTTPS://MEETINGS.DIALPAD.COM/EHIGUCHI](https://meetings.dialpad.com/ehiguchi) or

DIAL (949) 424-2229 (No Passcode Needed)

If you have questions regarding this event or you require language interpretation services in languages other than English, please contact:

Eric Higuchi, at (949) 290-7510 or eric.higuchi@redrockri.com

Red Rock Realty Investment
3121 Michelson Drive, Suite 200
Irvine, CA 92612
(949) 290-7510 | www.redrockri.com

Grand Avenue Plaza LLC & Red Rock Realty Investment

Cordialmente te invita a una reunión de información para la comunidad:

Grand and Grovemont

*Un proyecto de viviendas adosadas por venta
2511, 2521 & 2525 North Grand Avenue, Santa Ana, CA 92075*



Grand and Grovemont será un nuevo desarrollo de casas adosadas para la venta. Por favor, ven y comparte tus pensamientos o ideas acerca de este nuevo desarrollo familiar. En la reunión se dará información general, vamos a responder a preguntas y aceptaremos comentarios sobre la propuesta de estas viviendas.

DIA Y LOCATION DE LA SITA

**Mirércoles, Julio 6, 2022
6:00 PM to 7:00 PM**

LOCATION DE LA SITA: LLAMADA VIRTUAL

**[HTTPS://MEETINGS.DIALPAD.COM/EHIGUCHI](https://meetings.dialpad.com/ehiguchi) o
MARQUE (949) 424-2229 (No Contraseña Requerida)**

Si usted tiene preguntas acerca de este evento o requiere servicios de interpretación al español, por favor póngase en contacto con:

Eric Higuchi, al (949) 290-7510 o eric.higuchi@redrockri.com

Attachment 3

Proof of Payment of Mailing of Notices



Action Mail - 230 North Market Place - Escondido, CA 92029-

Phone: (760) 480-2323 Fax: (760) 480-2335

FaxPay/EmailPay

Authorization Form

TO: QTATIVE
FROM: Action Mail

Instructions:

1. Make your check payable to ACTION MAIL for the Total Check Amount listed below.
2. Sign the Authorization below; then, email/fax this form and a copy of your check back to us at the fax number 760 480 2335 or action@themailbusiness.com.
3. Do not send us the original check; destroy it, or keep it for your records. Be sure to deduct the amount from your checking account as if you had sent us the original.

Authorization:

The undersigned, on behalf of Qtative (Client), hereby authorizes ACTION MAIL to deposit the faxed copy of our check # 192 attached, in the amount 1,551.22 as payment for services provided by ACTION MAIL, itemized as follows:

Job #:52843
 Postage Amount: \$449.66
 Services Amount \$1,101.56
 Total Due: \$1,551.22

Client acknowledges that all services are performed on an individual basis and, when postage is involved, the USPS does not refund postage spent; therefore, both services and postage spent are not returnable. The Client agrees that the provider's liability for errors shall be limited to replacing the services or refunding the cost of the services, whichever is less.

CLIENT (Authorized Signature; must be same as signature on check)

Date: June 22, 2022

If you have any questions, please call me at (760)480-2323; fax (760)480-2335

Attachment 4

Affidavit/Proof of Publication of the Meeting Notice

ORANGE COUNTY REPORTER

~SINCE 1921~

Mailing Address : 600 W SANTA ANA BLVD, SANTA ANA, CA 92701
Telephone (714) 543-2027 / Fax (714) 542-6841
Visit us @ www.LegalAdstore.com

BRYAN LEON
RED ROCK REALTY INVESTMENTS
16381 SCIENTIFIC
IRVINE, CA 92618

COPY OF NOTICE

Notice Type: GPN GOVT PUBLIC NOTICE

Ad Description

Grand and Grovemont A For-Sale, Townhome Development

To the right is a copy of the notice you sent to us for publication in the ORANGE COUNTY REPORTER. Thank you for using our newspaper. Please read this notice carefully and call us with any corrections. The Proof of Publication will be filed with the County Clerk, if required, and mailed to you after the last date below. Publication date(s) for this notice is (are):

06/24/2022

An invoice will be sent after the last date of publication. If you prepaid this order in full, you will not receive an invoice.

Daily Journal Corporation

Serving your legal advertising needs throughout California.

ORANGE COUNTY REPORTER, SANTA ANA	(714) 543-2027
BUSINESS JOURNAL, RIVERSIDE	(951) 784-0111
DAILY COMMERCE, LOS ANGELES	(213) 229-5300
LOS ANGELES DAILY JOURNAL, LOS ANGELES	(213) 229-5300
SAN FRANCISCO DAILY JOURNAL, SAN FRANCISCO	(800) 640-4829
SAN JOSE POST-RECORD, SAN JOSE	(408) 287-4866
THE DAILY RECORDER, SACRAMENTO	(916) 444-2355
THE DAILY TRANSCRIPT, SAN DIEGO	(619) 232-3486
THE INTER-CITY EXPRESS, OAKLAND	(510) 272-4747

OR# 3598881

Red Rock Realty Investment
3121 Michelson Drive, Suite 200
Irvine, CA 92612 (949) 290-7510
www.redrockri.com

Grand Avenue Plaza LLC & Red Rock Realty Investment Cordially invites you to a community information meeting for:

Grand and Grovemont

A For-Sale, Townhome Development at 2511, 2521 & 2525 North Grand Avenue, Santa Ana, CA 92075 Grand and Grovemont will be a new, for sale townhome development. Please come and share your thoughts and ideas about this new housing development for families. At the meeting, we will provide general information, answer questions, and solicit input on the housing proposal.

MEETING DATE AND TIME

Wednesday, July 6, 2022

6:00 PM to 7:00 PM

MEETING LOCATION: VIRTUAL

CONFERENCE CALL

[HTTPS://MEETINGS.DIALPAD.COM/EHIGUCHI](https://meetings.dialpad.com/EHIGUCHI)

GUCHI or

DIAL (949) 424-2229 (No Passcode Needed)

If you have questions regarding this event or you require language interpretation services in languages other than English, please contact:

Eric Higuchi, at (949) 290-7510 or
eric.higuchi@redrockri.com

6/24/22

OR-3598881#



* A 0 0 0 0 0 6 0 4 9 8 7 5 *

Attachment 5

Virtual Meeting Attendee List

•

Eric Higuchi (ORGANIZER)

63 minutes (1:40 pm — 2:44 pm) 60 minutes

• **BL**

Bryan Leon

45 minutes (1:59 pm — 2:44 pm) 0 minutes

• **ML**

Mary Lou Branch

45 minutes (1:59 pm — 2:44 pm) 0 minutes

• **CB**

Connie Barin

45 minutes (1:59 pm — 2:44 pm) 2 minutes

• **A**

Angelo

45 minutes (1:59 pm — 2:44 pm) 0 minutes

• **??**

714-402-2582

7 minutes (1:59 pm — 2:07 pm) 0 minutes 714-402-2582

• **PG**

Pedro Gomez

43 minutes (2:00 pm — 2:44 pm) 0 minutes

• **J**

Jill

43 minutes (2:01 pm — 2:44 pm) 0 minutes

• **D**

Dale

42 minutes (2:02 pm — 2:44 pm) 0 minutes

• **MR**

Melissa Rodriguez

42 minutes (2:02 pm — 2:44 pm) 0 minutes

• **AP**

Ali Pezeshkpour

41 minutes (2:02 pm — 2:44 pm) 0 minutes

• **CF**

Craig Fromm

• **JC**

John C

41 minutes (2:02 pm — 2:44 pm) 0 minutes

• **G**

gene

40 minutes (2:03 pm — 2:44 pm) 0 minutes

• **IR**

Isuri Ramos

39 minutes (2:05 pm — 2:44 pm) 0 minutes

• DC

Darcie Cancino

36 minutes (2:07 pm — 2:44 pm) 0 minutes

• WC

Wireless Caller

33 minutes (2:11 pm — 2:44 pm) 0 minutes 714-955-3368

• M

Margarita

27 minutes (2:17 pm — 2:44 pm) 0 minutes

• PB

Pena Barbara

12 minutes (2:21 pm — 2:33 pm) 0 minutes 714-345-8210

• CS

Carol Slaton

• CS

Carol Slaton

0 minutes (2:31 pm — 2:31 pm) 0 minutes

• CS

Carol Slaton

12 minutes (2:32 pm — 2:44 pm) 0 minutes

• F

Fabiola

1 minute (2:42 pm — 2:44 pm) 0 minutes

Attachment 6
Presentation Slides

GRAND AND GROVEMENT
SUNSHINE MEETING

City of Santa Ana, California

RED ROCK REALTY INVESTMENT

July 6, 2022

PROJECT CONTACT

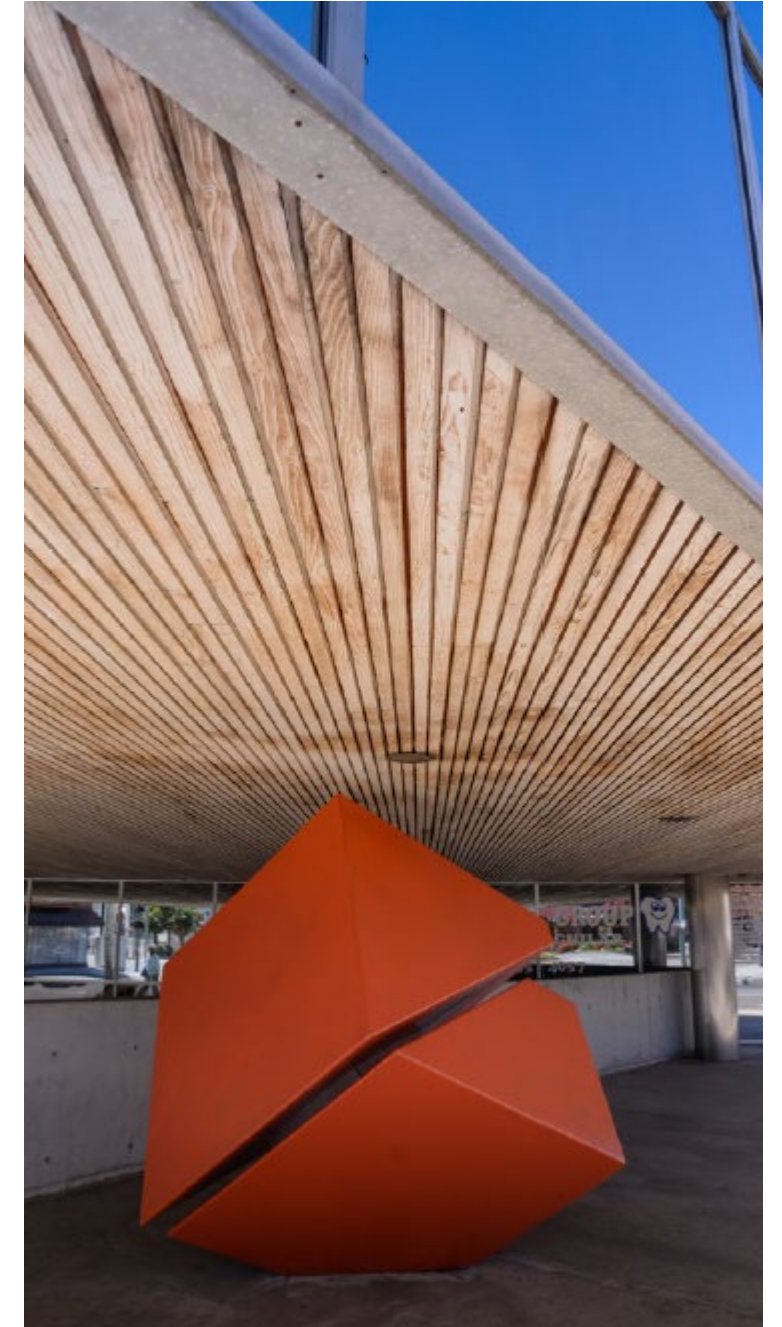
Eric Higuchi

Eric.Higuchi@redrockri.com

Cell: 949.290.7510

DEVELOPER BACKGROUND

- **Current Santa Ana Projects**
 - McFadden Public Market
- **Past Santa Ana Projects**
 - The Pacific Building
 - 500 North Main Street

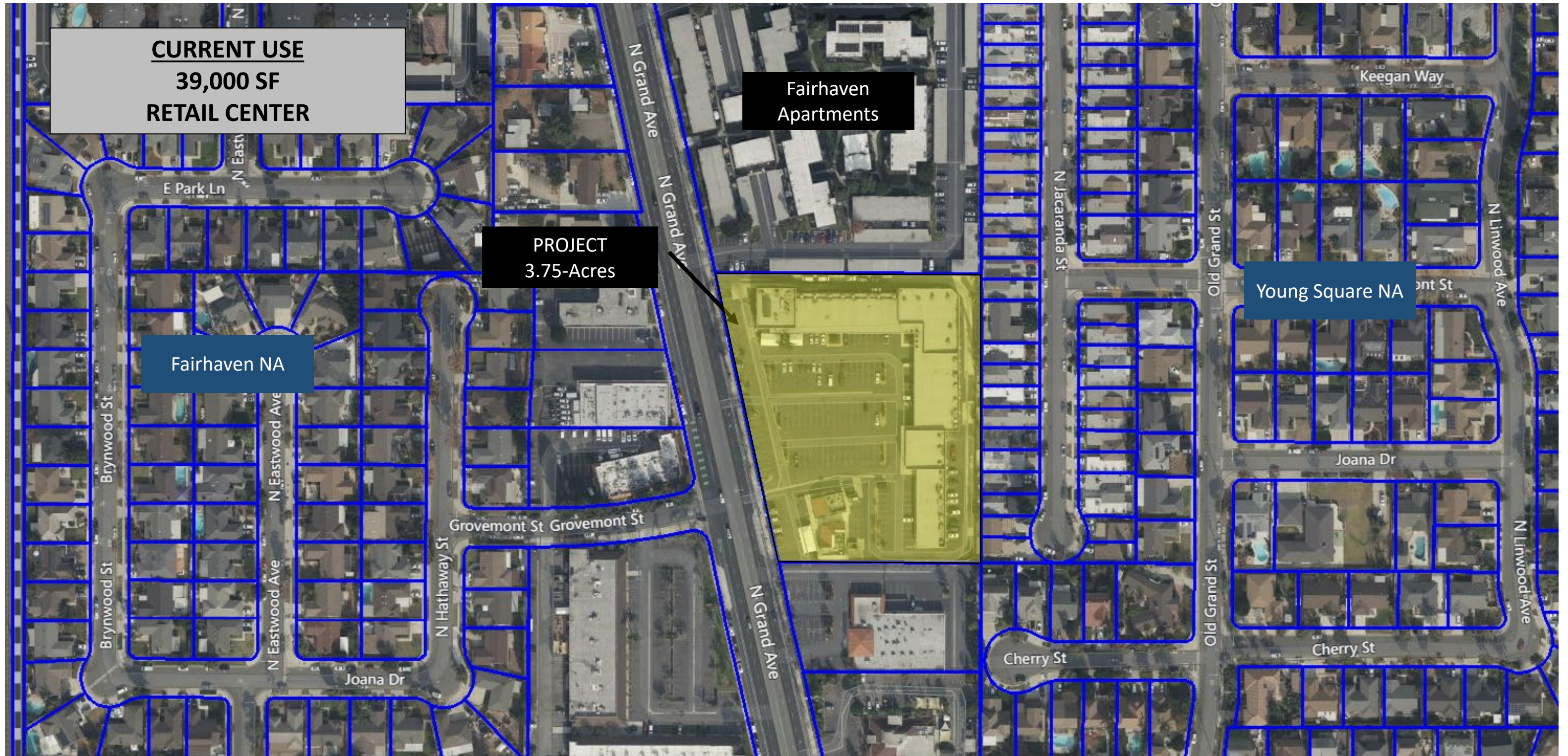


PROJECT DESCRIPTION

PROPOSED USE
80 TOWNHOMES
THREE STORIES (35' – 10")
SIDE BY SIDE GARAGE PARKING
20 GUEST PARKING SPACES

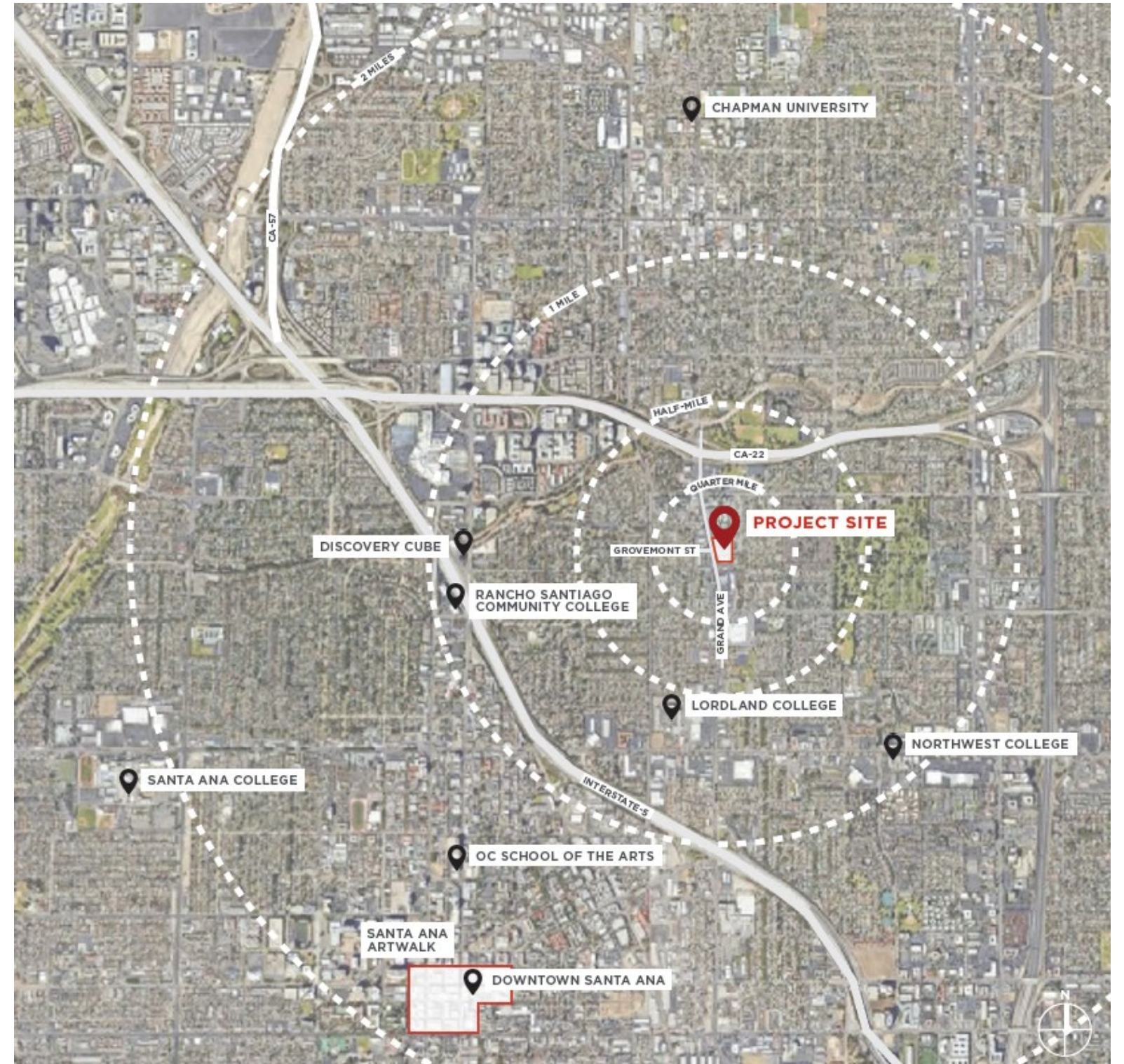


AERIAL MAP



AERIAL MAP

- **Homeownership Opportunity for Santa Ana Residents: Young Families and First Time Home Buyers**
 - Link between DTSA and the Orange Circle
 - Excellent Access to Freeways
 - Well Located Near Major Job Centers, Regional Shopping and Dining Venues, and Prestigious Academic Institutions

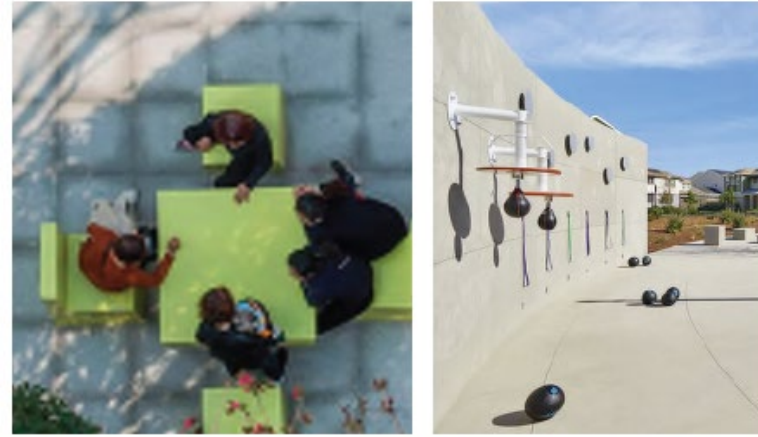


ENTITLEMENT SUMMARY

- **General Plan Designation: Urban Neighborhood**
 - No Proposed General Plan Amendment
- **Proposed Zoning: Harbor Mixed-Use Transit Corridor Plan**
 - Current Zoning: C-5 (Arterial Commercial)
- **Proposed Density: 21.3 Unit Per Acre**
 - Allowable Density: 30 Units Per Acres
- **Parked to Code: 2.25 Parking Stalls Per Unit**



SITE PLAN



LANDSCAPE PALLETE

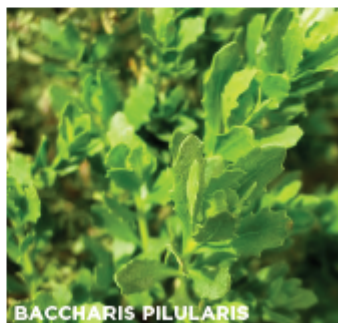
Proposed planting will reflect sculptural/colorful planting overlaid onto the foundation landscape. The intention is for the artful vibe to flow through the planting areas, providing visual interest to further enjoy the outdoor experience.

Selected palette will be a mix of low water use California friendly and native plant materials. Variety in foliage, color, texture, and form will exude a unique landscape that appeals to residents and visitors alike. Massing and juxtaposition of plant species are also intended to emphasize pattern and contrast.

ART OVERLAY



FOUNDATION PLANTING



ART OVERLAY

- AGAVE 'BLUE GLOW' - BLUE GLOW AGAVE
- AGAVE DESMETTIANA - SMOOTH AGAVE
- AGAVE PARRYI - PARRY'S AGAVE
- AGAVE SP. 'MOONSHINE' - MOONSHINE AGAVE
- ALOE SPP.
- BAILEYA MULTIRADIATA - DESERT MARIGOLD
- CRASSULA SPP.
- ESCHSCHOLZIA CALIFORNICA - CALIFORNIA POPPY
- HESPERALOE PARVIFLORA - RED HESPERALOE
- HESPERALOE PARVIFLORA 'YELLOW' - YELLOW HESPERALOE
- EUPHORBIA SPP.
- KALANCHOE SPP.
- LEUCOPHYLLUM 'HEAVENLY CLOUD' - TEXAS RANGER 'HEAVENLY CLOUD'
- LEUCOPHYLLUM LAEVIGATUM - CHIHUAHUAN SAGE

WATER USE

- LOW
- LOW
- LOW
- LOW
- LOW
- LOW
- LOW
- LOW
- LOW
- LOW
- LOW
- LOW
- LOW
- LOW

FOUNDATION PLANTING

TREES

- ARBUTUS UNEDO - STRAWBERRY TREE
- BRACHYCHITON POPULNEUS - BOTTLE TREE
- CERCIDIUM FLORIDUM - BLUE PALO VERDE
- CINNAMOMUM CAMPHORA - CAMPHOR TREE
- LAGERSTROEMIA INDICA - CRAPE MYRTLE
- PINUS ELDERICA - AFGHAN PINE
- PINUS HALEPENSIS - ALEPPO PINE
- QUERCUS AGRIFOLIA - COAST LIVE OAK
- QUERCUS VIRGINIANA - SOUTHERN LIVE OAK

WATER USE

- LOW
- LOW
- LOW
- MED.
- MED.
- LOW
- LOW
- LOW
- LOW

SHRUBS

- ARBUTUS UNEDO 'COMPACTA' - DWARF STRAWBERRY TREE
- CASSIA ARTEMESIOIDES - FEATHER CASSIA
- CEANOTHUS SPP. / CVS. - WILD LILAC
- CISTUS SPP. / CVS. - ROCKROSE
- GREVILLEA SPP. - GREVILLEA
- HETEROMELES ARBUTIFOLIA - TOYON
- LEUCOPHYLLUM FRUTESCENS CVS. - TEXAS RANGER
- RHUS OVATA - SUGAR BUSH
- SALVIA SPP.

- LOW
- LOW
- LOW
- LOW
- LOW
- LOW
- LOW
- LOW
- LOW

GROUND COVER

- ACACIA REDOLENS - DESERT CARPET
- BACCHARIS PILULARIS - COYOTE BRUSH
- ROSMARINUS OFFICINALIS 'PROSTRATUS' - DWARF ROSEMARY

- LOW
- LOW
- LOW

GRASSES

- CAREX DIVULSA - BERKELEY SEDGE
- FESTUCA X 'SISKIYOU BLUE' - SISKIYOU BLUE FESCUE
- MUHLENBERGIA CAPILLARIS - GULF MUHLY
- PENNISETUM MESSIACUM 'RED BUNNY TAILS' - FOUNTAIN GRASS
- BOUTELOUA GRACILIS - BLUE AMBITION
- FESTUCA MAIREI - ATLAS FESCUE

- LOW
- LOW
- LOW
- MED.
- LOW
- LOW

STREET VIEW: NORTH ON GRAND AVE



STREET VIEW: SOUTHERN END OF PROPERTY



STREET VIEW: NORTHERN END OF PROPERTY



STREET VIEW: SOUTH ON GRAND AVE



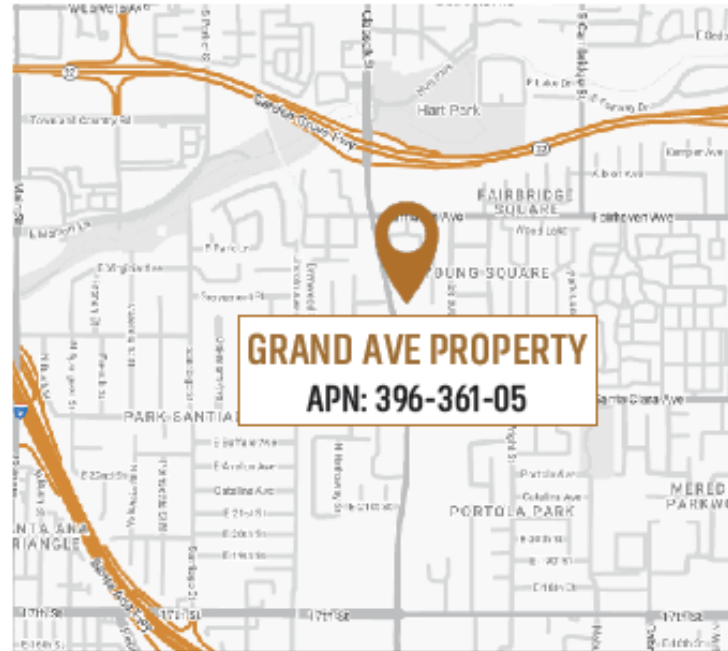
STREET VIEW: ACROSS THE STREET



COMMUNITY BENEFITS

- **Economic Investment in the Grand Avenue Corridor**
 - Link between DTSA and the Orange Circle
 - Enhancement of Grand Avenue
- **New For-Sale Housing in Santa Ana**
 - Balance the Development of For Rent and For Sale Housing in the City
- **Economic Benefit to the City**

COMMUNITY ECONOMIC BENEFITS



GRAND AVE PROPERTY
APN: 396-361-05

THE PROJECT

- ▲ 80 3-Story Townhomes on 3.75 Acres
- ▲ \$776,563 Estimated Average Home Sales Price
- ▲ 1,777 sf Estimated Average Home Size
- ▲ \$62,125,000 Estimated Net Taxable Value at Build Out

CURRENT LAND USE

- ▲ ±39,000 sf Class-C Retail Center
- ▲ \$8,374,875 Assessed Value for 2021-22 Tax Year

CITY ECONOMIC BENEFITS



\$201,000

INCREASE IN CITY'S ANNUAL AD VALORUM PROPERTY TAX REVENUE



\$974,000

DEVELOPER PAID CITY IMPACT AND CONNECTION FEES



\$2.1 Million

DEVELOPER PAID AFFORDABLE HOUSING FEES



\$300,000

DEVELOPER PAID PERMIT PROCESSING FEES

OTHER AGENCY ECONOMIC BENEFITS



\$539,000

DEVELOPER PAID SCHOOL FEES



\$409,000

INCREASE IN OTHER AGENCY ANNUAL AD VALORUM PROPERTY TAX REVENUE

LOCAL ECONOMIC BENEFITS



\$23.3 Million

PROJECT CONSTRUCTION COSTS



\$17.6 Million

TOTAL ANNUAL HOUSEHOLD INCOME UPON BUILDOUT



\$3.5 Million

TOTAL ANNUAL HOUSEHOLD DISCRETIONARY SPENDING UPON BUILDOUT



\$80,095

INCREASED ANNUAL SALES TAX REVENUE GENERATED AT BUILDOUT



\$978,000

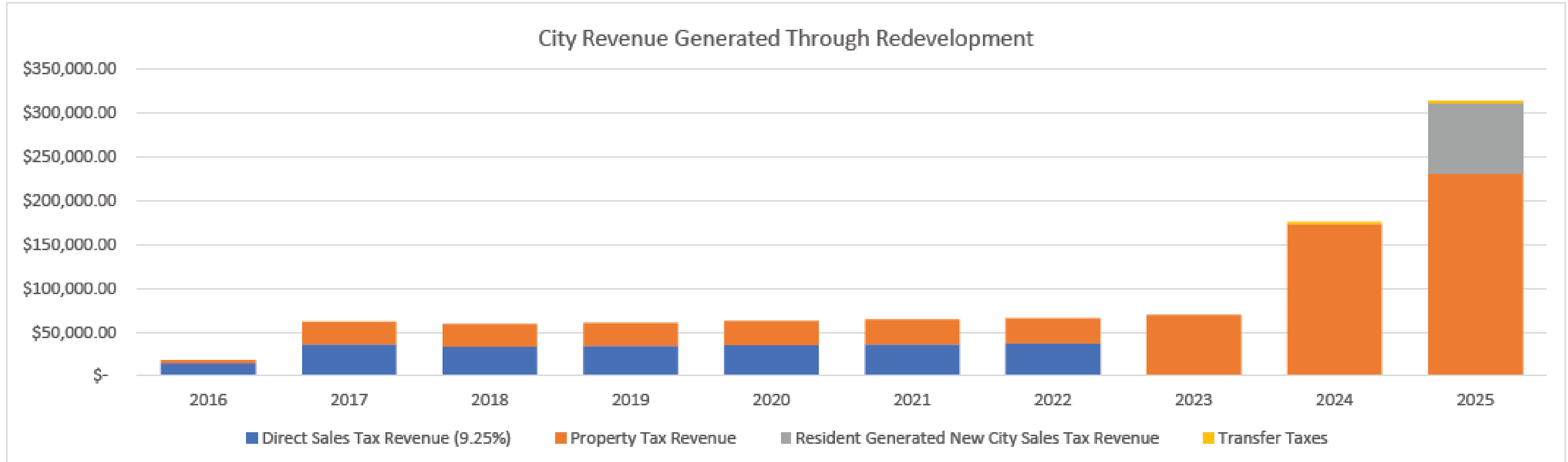
CO-OP BROKER COMMISSIONS PAID BY DEVELOPER



\$291,000

ANNUAL REAL ESTATE BROKER COMMISSIONS

COMMUNITY ECONOMIC BENEFIT



Project Land Use Milestone	Retail Prev Ownership	Retail Sale to Current Owner	Retail N/A	Retail N/A	Retail N/A	Retail N/A	Retail N/A	Residential Redevelopment	Residential Sale to Residents	Residential Sold Out
Year	2016	2017	2018	2019	2020	2021	2022	2023	2024	2025
Direct Sales Tax Revenue (9.25%)	\$ 14,755.29	\$ 36,237.31	\$ 33,236.13	\$ 34,233.21	\$ 35,260.21	\$ 36,318.02	\$ 37,407.56	\$ -	\$ -	\$ -
Source	City of Santa Ana	City of Santa Ana	City of Santa Ana	Est @ 3% Inc	Est @ 3% Inc	Est @ 3% Inc	Est @ 3% Inc	N/A	N/A	N/A
Property Tax Revenue	\$ 3,226.20	\$ 25,740.00	\$ 26,254.80	\$ 26,779.90	\$ 27,315.49	\$ 27,861.80	\$ 28,419.04	\$ 69,378.48	\$ 173,446.20	\$ 231,261.60
Resident Generated New City Sales Tax Revenue	\$ -	\$ -	\$ -	\$ -	\$ -	\$ -	\$ -	\$ -	\$ -	\$ 80,094.90
Transfer Taxes	\$ -	\$ -	\$ -	\$ -	\$ -	\$ -	\$ -	\$ -	\$ 2,990.00	\$ 2,990.00
Total Revenue to the City	\$ 17,981.49	\$ 61,977.31	\$ 59,490.93	\$ 61,013.11	\$ 62,575.70	\$ 64,179.82	\$ 65,826.60	\$ 69,378.48	\$ 176,436.20	\$ 314,346.49

COMMUNITY ECONOMIC BENEFIT: NET PRESENT VALUE

What is Today's Value of the Increased Revenue to the City?

- Assumes a Net Increase in Property Taxes and Local Sale Tax Revenue of \$240,000 Upon Sell Out
- Period of 30 Years
- 2% Increase Per Year
- Total Revenue of \$9.7MM

Discount Rate	Net Present Value
4%	\$5,298,281
5%	\$4,647,134
6%	\$4,107,742
7%	\$3,657,824
8%	\$3,279,967
9%	\$2,960,488
10%	\$2,688,580

SITE PLAN | QUESTIONS



SITE INFORMATION

Address: 2525 North Grand Avenue
 Parcel No. 396-361-05
 Site Area 3.75 ac
 City: Santa Ana
 County: Orange County
 Existing Zoning: C-5 (Arterial Commercial)
 Existing General Plan: UN-30 (Urban Neighborhood 30du/ac)
 Proposed Zoning: Harbor Mixed-Use Transit Corridor Plan
 Fire Code: California Fire Code
 Cons. Type/Fire Rating: V-B
 Occupancy Type: R3
 Fire Sprinkler Type: NFPA 13-D

Harbor Mixed-Use Transit Corridor Plan - Development Standards

Overlay Zone - Neighborhood Transitional District
 Adjacent to public ROW 0 - 10 Feet Max.
 Adjacent to Residential 1st and 2nd Fl. - 15 Feet
 3rd Fl. - 20 Feet
 Adjacent to other use 5 Feet
 Building to building 6 Feet (up to 3-story)
 Aisle Setback 3 Feet
 Parking Setback 7 Feet
 Building Height 4-Story
 Public Open Space 15% (can incl. private/common OS)
 Private/Common OS 90sf/unit
 Parking 2.25/unit

Site Plan Summary

Site Area 3.75 ac
 Proposed Units 80 du
 Proposed Density 21.3 du/ac
 Units (Net Sizes):
 Plan 1 23 Units (1,704sf - 4Bd/3.5BA)
 Plan 2 31 Units (1,793sf - 4Bd/3.5BA)
 Plan 3 26 Units (1,832sf - 4Bd/3.5BA)
 Total 80 Units
 (AU) Plan 1 Indicates Accessible Unit - 7 Units Total

Building Floor Area (Gross)		Total
BT-100 (5 Buildings)	6,908sf	34,540sf
BT-200 (13 Buildings)	11,821sf	153,673sf
		188,213sf

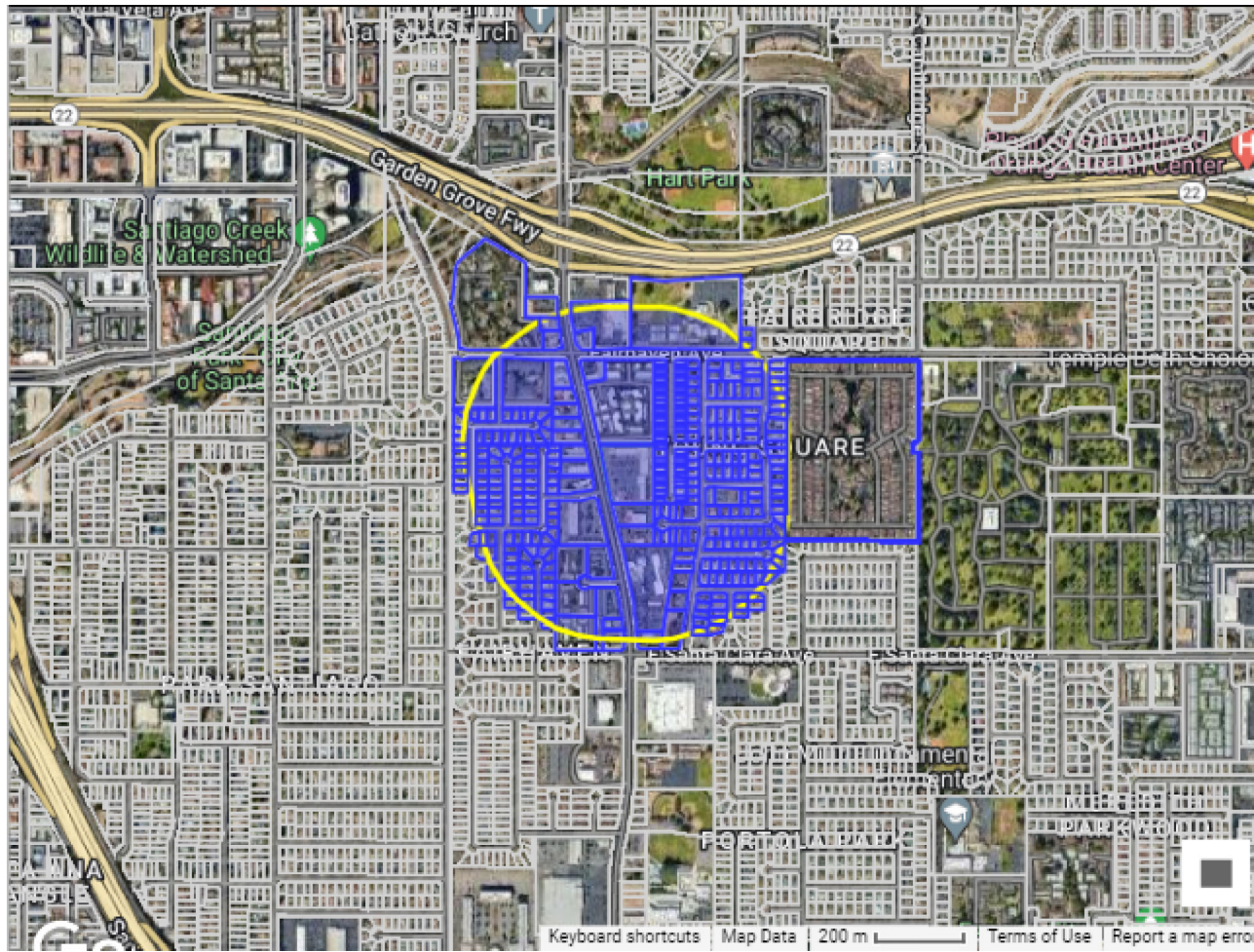
Parking Required
 80x2.25/unit = 180 Spaces
 (Table 3-7 Off-Street Parking Standards)
Parking Provided
 Garage = 160 Spaces
 Open Parking = 19 Spaces
 Accessible Parking = 1 Spaces
 Total Provided = 180 Spaces

Bicycle Parking Required
 1 Space:5 Units = 16 Spaces
 16 Spaces Provided In Garage Plans (Ceiling Rack Mounted)
 (Table 3-8 Bicycle Parking)

Required Open Space
 Common Open Space 106,508 sf x 15% = 24,526 sf
 (15% of Lot Size - 15' Mln. Dim.)
 and/or Private Open Space 80 Units x 90 = 7,200 sf
 (90 sf per Unit - 6' Mln. Dim.)
 (Chapter 3, Table 3-9 Onsite Open Space requirements)

Attachment 7

Contact List and Corresponding 1,000-foot Radius Map



APN	NAME	ADDRESS	CITY	STATE	ZIP
390-171-03	YS PROPERTIES L	55 BELLATRIX	IRVINE	CA	92618
390-171-03	OCCUPANT	2701 N GRAND AVE	SANTA ANA	CA	92705
390-171-04	SCHOOL ORANG	726 W COLLINS AVE	ORANGE	CA	92867
390-171-04	OCCUPANT	1415 FAIRHAVEN AVE	SANTA ANA	CA	92705
390-171-07	GVD COMMERC	1915 A E KATELLA AVE	ORANGE	CA	92867
390-171-07	OCCUPANT	2727 N GRAND AVE	SANTA ANA	CA	92705
390-171-07	OCCUPANT	2705 N GRAND AVE	SANTA ANA	CA	92705
390-171-07	OCCUPANT	2707 N GRAND AVE	SANTA ANA	CA	92705
390-171-07	OCCUPANT	2709 N GRAND AVE	SANTA ANA	CA	92705
390-171-07	OCCUPANT	2727 N GRAND AVE	SANTA ANA	CA	92705
390-171-07	OCCUPANT	2731 N GRAND AVE	SANTA ANA	CA	92705
390-171-07	OCCUPANT	2733 N GRAND AVE	SANTA ANA	CA	92705
390-171-07	OCCUPANT	2735 N GRAND AVE	SANTA ANA	CA	92705
390-171-07	OCCUPANT	2737 N GRAND AVE	SANTA ANA	CA	92705
390-171-07	OCCUPANT	2739 N GRAND AVE	SANTA ANA	CA	92705
390-171-07	OCCUPANT	2741 N GRAND AVE	SANTA ANA	CA	92705
390-171-07	OCCUPANT	2747 N GRAND AVE	SANTA ANA	CA	92705
390-171-07	OCCUPANT	2749 N GRAND AVE	SANTA ANA	CA	92705
390-171-07	OCCUPANT	2751 N GRAND AVE	SANTA ANA	CA	92705
390-171-07	OCCUPANT	2757 N GRAND AVE	SANTA ANA	CA	92705
390-171-07	OCCUPANT	2761 N GRAND AVE	SANTA ANA	CA	92705
390-181-01	TRAVIS WATERM	2702 N LINWOOD ST	SANTA ANA	CA	92705
390-181-02	LETRANG COTR	2706 N LINWOOD AVE	SANTA ANA	CA	92705
390-701-01	CALIBER CAR W/	17211 SIMS LN	HUNTINGTON BI	CA	92649
390-701-01	OCCUPANT	2702 N GRAND AVE	SANTA ANA	CA	92705
390-701-02	CHUEN KAM WC	1550 STADIUM WAY # 10	LOS ANGELES	CA	90012
390-701-02	OCCUPANT	2710 N GRAND AVE	SANTA ANA	CA	92705
390-701-03	VIMCO HOTEL C.	155 N EUCALYPTUS DR	ANAHEIM	CA	92808
390-701-03	OCCUPANT	2720 N GRAND AVE	SANTA ANA	CA	92705
390-701-05	FAR WEST FAIRH	PO BOX 11976	SANTA ANA	CA	92711
390-701-05	RESIDENT	1201 FAIRHAVEN AVE APT 1A	SANTA ANA	CA	92705
390-701-05	RESIDENT	1201 FAIRHAVEN AVE APT 1B	SANTA ANA	CA	92705
390-701-05	RESIDENT	1201 FAIRHAVEN AVE APT 1C	SANTA ANA	CA	92705
390-701-05	RESIDENT	1201 FAIRHAVEN AVE APT 1D	SANTA ANA	CA	92705
390-701-05	RESIDENT	1201 FAIRHAVEN AVE APT 1E	SANTA ANA	CA	92705
390-701-05	RESIDENT	1201 FAIRHAVEN AVE APT 1F	SANTA ANA	CA	92705
390-701-05	RESIDENT	1201 FAIRHAVEN AVE APT 1G	SANTA ANA	CA	92705
390-701-05	RESIDENT	1201 FAIRHAVEN AVE APT 1H	SANTA ANA	CA	92705
390-701-05	RESIDENT	1201 FAIRHAVEN AVE APT 2A	SANTA ANA	CA	92705
390-701-05	RESIDENT	1201 FAIRHAVEN AVE APT 2B	SANTA ANA	CA	92705
390-701-05	RESIDENT	1201 FAIRHAVEN AVE APT 2C	SANTA ANA	CA	92705
390-701-05	RESIDENT	1201 FAIRHAVEN AVE APT 2D	SANTA ANA	CA	92705
390-701-05	RESIDENT	1201 FAIRHAVEN AVE APT 2E	SANTA ANA	CA	92705
390-701-05	RESIDENT	1201 FAIRHAVEN AVE APT 2F	SANTA ANA	CA	92705
390-701-05	RESIDENT	1201 FAIRHAVEN AVE APT 2G	SANTA ANA	CA	92705
390-701-05	RESIDENT	1201 FAIRHAVEN AVE APT 2H	SANTA ANA	CA	92705

390-701-05	RESIDENT	1201 FAIRHAVEN AVE APT 24E	SANTA ANA	CA	92705
390-701-05	RESIDENT	1201 FAIRHAVEN AVE APT 24F	SANTA ANA	CA	92705
390-701-05	RESIDENT	1201 FAIRHAVEN AVE APT 24G	SANTA ANA	CA	92705
390-701-05	RESIDENT	1201 FAIRHAVEN AVE APT 24H	SANTA ANA	CA	92705
390-701-05	RESIDENT	1201 FAIRHAVEN AVE APT 24J	SANTA ANA	CA	92705
390-701-05	RESIDENT	1201 FAIRHAVEN AVE APT 24K	SANTA ANA	CA	92705
390-701-05	RESIDENT	1201 FAIRHAVEN AVE APT 24L	SANTA ANA	CA	92705
390-701-05	RESIDENT	1201 FAIRHAVEN AVE APT 24M	SANTA ANA	CA	92705
390-701-05	RESIDENT	1201 FAIRHAVEN AVE APT 24N	SANTA ANA	CA	92705
390-701-05	RESIDENT	1201 FAIRHAVEN AVE APT 24P	SANTA ANA	CA	92705
390-701-05	RESIDENT	1201 FAIRHAVEN AVE APT 25A	SANTA ANA	CA	92705
390-701-05	RESIDENT	1201 FAIRHAVEN AVE APT 25B	SANTA ANA	CA	92705
390-701-05	RESIDENT	1201 FAIRHAVEN AVE APT 25C	SANTA ANA	CA	92705
390-701-05	RESIDENT	1201 FAIRHAVEN AVE APT 25D	SANTA ANA	CA	92705
390-701-05	RESIDENT	1201 FAIRHAVEN AVE APT 25E	SANTA ANA	CA	92705
390-701-05	RESIDENT	1201 FAIRHAVEN AVE APT 25F	SANTA ANA	CA	92705
390-701-05	RESIDENT	1201 FAIRHAVEN AVE APT 25G	SANTA ANA	CA	92705
390-701-05	RESIDENT	1201 FAIRHAVEN AVE APT 25H	SANTA ANA	CA	92705
390-701-05	RESIDENT	1201 FAIRHAVEN AVE APT 25J	SANTA ANA	CA	92705
390-701-05	RESIDENT	1201 FAIRHAVEN AVE APT 25K	SANTA ANA	CA	92705
390-701-05	RESIDENT	1201 FAIRHAVEN AVE APT 25L	SANTA ANA	CA	92705
390-701-05	RESIDENT	1201 FAIRHAVEN AVE APT 25M	SANTA ANA	CA	92705
390-701-05	RESIDENT	1201 FAIRHAVEN AVE APT 25P	SANTA ANA	CA	92705
390-701-05	RESIDENT	1201 FAIRHAVEN AVE APT 25Q	SANTA ANA	CA	92705
390-701-05	RESIDENT	1201 FAIRHAVEN AVE APT 25R	SANTA ANA	CA	92705
396-111-01	ALLEN GRADOU	2525 BRYNWOOD ST	SANTA ANA	CA	92705
396-111-02	LINDA KLASSEN	,2521 BRYNWOOD ST	SANTA ANA	CA	92705
396-111-03	LOPEZ TIODORO	2517 BRYNWOOD ST	SANTA ANA	CA	92705
396-111-04	ISIDRO GUERRA	2513 BRYNWOOD ST	SANTA ANA	CA	92705
396-111-05	TIMOTHY EDWA	2509 BRYNWOOD ST	SANTA ANA	CA	92705
396-111-06	JOSE TENA	2505 BRYNWOOD ST	SANTA ANA	CA	92705
396-111-07	FERNANDO & AF	2501 BRYNWOOD	SANTA ANA	CA	92705
396-111-08	HARINDER P S G	2421 BRYNWOOD ST	SANTA ANA	CA	92705
396-111-09	PHILIP & CHRIST	2417 BRYNWOOD ST	SANTA ANA	CA	92705
396-111-10	JUAN C TORRES	,2413 BRYNWOOD ST	SANTA ANA	CA	92705
396-111-11	CRISTINA & RON	2414 N EASTWOOD AVE	SANTA ANA	CA	92705
396-111-12	PATRICIO C & YC	2418 N EASTWOOD AVE	SANTA ANA	CA	92705
396-111-13/121	MARIA ORTIZ FR	12082 SKYWAY DR	SANTA ANA	CA	92705
396-111-13	RESIDENT	2422 N EASTWOOD AVE	SANTA ANA	CA	92705
396-121-09	RESIDENT	1205 E PARK LN	SANTA ANA	CA	92705
396-121-19	RESIDENT	1206 E PARK LN	SANTA ANA	CA	92705
396-111-14	ROSALBA SANTC	2502 N EASTWOOD AVE	SANTA ANA	CA	92705
396-111-15	RAY M FUJINO	2506 N EASTWOOD AVE	SANTA ANA	CA	92705
396-111-16	ROBERT M TUNE	2510 N EASTWOOD AVE	SANTA ANA	CA	92705
396-111-17	ROSEMARIE AUS	2514 N EASTWOOD AVE	SANTA ANA	CA	92705
396-111-18	SANDRA MORA	2518 N EASTWOOD AVE	SANTA ANA	CA	92705
396-111-19	ALEJANDRO & H	2522 N EASTWOOD AVE	SANTA ANA	CA	92705

396-111-20	DEBORAH D GO\ PO BOX 10632	PRESCOTT	AZ	86304
396-111-20	RESIDENT 2525 N EASTWOOD AVE	SANTA ANA	CA	92705
396-111-21	JOHN S HEROLD 2521 N EASTWOOD AVE	SANTA ANA	CA	92705
396-111-22	JUAN J VELASCO 2517 N EASTWOOD AVE	SANTA ANA	CA	92705
396-111-23	DAVID & MONIC 2513 N EASTWOOD AVE	SANTA ANA	CA	92705
396-111-24	CHRISTOPHER & 2509 N EASTWOOD AVE	SANTA ANA	CA	92705
396-111-25	DELPANEAUX & 2505 N EASTWOOD AVE	SANTA ANA	CA	92705
396-111-26	CARMEN & ESPE 2501 N EASTWOOD AVE	SANTA ANA	CA	92705
396-111-27	ERNESTO CISNEF 2421 N EASTWOOD AVE	SANTA ANA	CA	92705
396-111-28	ALEJANDRINA O\ 2417 N EASTWOOD AVE	SANTA ANA	CA	92705
396-111-29	DAWN A BOUCH 2413 N EASTWOOD AVE	SANTA ANA	CA	92705
396-111-30	RUIZ ARNOLD & 2414 N HATHAWAY ST	SANTA ANA	CA	92705
396-111-31	MARIO A NAVAF 1404 N TUSTIN AVE # N1	SANTA ANA	CA	92705
396-111-31	RESIDENT 2418 N HATHAWAY ST	SANTA ANA	CA	92705
396-111-32	MARIA E CASTILI 2422 N HATHAWAY ST	SANTA ANA	CA	92705
396-111-33	TERESA JIMENEZ 2502 N HATHAWAY	SANTA ANA	CA	92705
396-111-34	BRIAN EDWARD 2506 N HATHAWAY	SANTA ANA	CA	92705
396-111-35	KEVIN & JOAN M 2510 N HATHAWAY ST	SANTA ANA	CA	92705
396-111-36	LINDA L COLLIER P O BOX 19024	ANAHEIM	CA	92817
396-111-36	RESIDENT 2514 N HATHAWAY ST	SANTA ANA	CA	92705
396-111-37	MEHNAZ BOHRA 2518 N HATHAWAY ST	SANTA ANA	CA	92795
396-111-38	VIOLA MYRE 2522 N HATHAWAY DR	SANTA ANA	CA	92705
396-111-39	GERALD D & IRIS 2526 N HATHAWAY	SANTA ANA	CA	92705
396-111-40	FRANCISCO HER 2525 N HATHAWAY ST	SANTA ANA	CA	92705
396-111-41	LUAN T TRAN 2521 N HATHAWAY ST	SANTA ANA	CA	92705
396-111-42	DELFINO & MAR 2517 N HATHAWAY ST	SANTA ANA	CA	92705
396-111-43	CHRISTOPHER R 13755 TYPEE WAY	IRVINE	CA	92620
396-111-43	RESIDENT 2513 N HATHAWAY ST	SANTA ANA	CA	92705
396-111-44	JOAQUIN A ACE\ 2509 N HATHAWAY ST	SANTA ANA	CA	92705
396-111-45	LOC NGUYEN/U\ 2505 N HATHAWAY ST	SANTA ANA	CA	92705
396-111-58	JONATHAN ZAPI 427 W JONQUIL RD	SANTA ANA	CA	92706
396-111-58	OCCUPANT 2530 N GRAND AVE	SANTA ANA	CA	92705
396-111-59	2510 N GRAND I 18002 IRVINE BLVD # 108	TUSTIN	CA	92780
396-111-59	OCCUPANT 2510 N GRAND AVE STE 100	SANTA ANA	CA	92705
396-111-59	OCCUPANT 2510 N GRAND AVE STE 102	SANTA ANA	CA	92705
396-111-59	OCCUPANT 2510 N GRAND AVE STE 203	SANTA ANA	CA	92705
396-111-59	OCCUPANT 2510 N GRAND AVE STE 112	SANTA ANA	CA	92705
396-111-59	OCCUPANT 2510 N GRAND AVE STE 210	SANTA ANA	CA	92705
396-111-59	OCCUPANT 2510 N GRAND AVE STE 200	SANTA ANA	CA	92705
396-111-59	OCCUPANT 2510 N GRAND AVE STE 209	SANTA ANA	CA	92705
396-111-59	OCCUPANT 2510 N GRAND AVE STE 202	SANTA ANA	CA	92705
396-111-59	OCCUPANT 2510 N GRAND AVE STE 211	SANTA ANA	CA	92705
396-111-59	OCCUPANT 2510 N GRAND AVE STE 204	SANTA ANA	CA	92705
396-111-59	OCCUPANT 2510 N GRAND AVE STE 101	SANTA ANA	CA	92705
396-111-59	OCCUPANT 2510 N GRAND AVE STE 105	SANTA ANA	CA	92705
396-111-59	OCCUPANT 2510 N GRAND AVE STE 107	SANTA ANA	CA	92705
396-111-59	OCCUPANT 2510 N GRAND AVE STE 110	SANTA ANA	CA	92705

396-111-59	OCCUPANT	2510 N GRAND AVE STE 201	SANTA ANA	CA	92705
396-111-59	OCCUPANT	2510 N GRAND AVE STE 206	SANTA ANA	CA	92705
396-111-59	OCCUPANT	2510 N GRAND AVE STE 207	SANTA ANA	CA	92705
396-111-59	OCCUPANT	2510 N GRAND AVE STE 205	SANTA ANA	CA	92705
396-111-59	OCCUPANT	2510 N GRAND AVE STE 208	SANTA ANA	CA	92705
396-111-59	OCCUPANT	2510 N GRAND AVE STE 100	SANTA ANA	CA	92705
396-111-59	OCCUPANT	2510 N GRAND AVE STE 102	SANTA ANA	CA	92705
396-111-59	OCCUPANT	2510 N GRAND AVE STE 203	SANTA ANA	CA	92705
396-111-59	OCCUPANT	2510 N GRAND AVE STE 112	SANTA ANA	CA	92705
396-111-59	OCCUPANT	2510 N GRAND AVE STE 210	SANTA ANA	CA	92705
396-111-59	OCCUPANT	2510 N GRAND AVE STE 200	SANTA ANA	CA	92705
396-111-59	OCCUPANT	2510 N GRAND AVE STE 209	SANTA ANA	CA	92705
396-111-59	OCCUPANT	2510 N GRAND AVE STE 202	SANTA ANA	CA	92705
396-111-59	OCCUPANT	2510 N GRAND AVE STE 211	SANTA ANA	CA	92705
396-111-59	OCCUPANT	2510 N GRAND AVE STE 204	SANTA ANA	CA	92705
396-111-59	OCCUPANT	2510 N GRAND AVE STE 101	SANTA ANA	CA	92705
396-111-59	OCCUPANT	2510 N GRAND AVE STE 105	SANTA ANA	CA	92705
396-111-59	OCCUPANT	2510 N GRAND AVE STE 107	SANTA ANA	CA	92705
396-111-59	OCCUPANT	2510 N GRAND AVE STE 110	SANTA ANA	CA	92705
396-111-59	OCCUPANT	2510 N GRAND AVE STE 201	SANTA ANA	CA	92705
396-111-59	OCCUPANT	2510 N GRAND AVE STE 206	SANTA ANA	CA	92705
396-111-59	OCCUPANT	2510 N GRAND AVE STE 207	SANTA ANA	CA	92705
396-111-59	OCCUPANT	2510 N GRAND AVE STE 205	SANTA ANA	CA	92705
396-111-59	OCCUPANT	2510 N GRAND AVE STE 208	SANTA ANA	CA	92705
396-111-60	ESFAHAN LLC	17602 17TH ST # 102-290	TUSTIN	CA	92780
396-111-60	OCCUPANT	2520 N GRAND AVE	SANTA ANA	CA	92705
396-111-60	OCCUPANT	2522 N GRAND AVE	SANTA ANA	CA	92705
396-112-01	YADIRA BUSTOS	2526 N BRYNWOOD ST	SANTA ANA	CA	92705
396-112-02	CLEMENTE MEN	2522 N BRYNWOOD ST	SANTA ANA	CA	92705
396-112-03	RUBEN & ROSAL	2518 N BRYNWOOD ST	SANTA ANA	CA	92705
396-112-04	MARTIN & CAMI	2514 N BRYNWOOD ST	SANTA ANA	CA	92705
396-112-05	IVONNE ROCA	12772 WHEELER PL	SANTA ANA	CA	92705
396-112-05	RESIDENT	2510 BRYNWOOD ST	SANTA ANA	CA	92705
396-112-06	VITERBO & ROSA	2506 N BRYNWOOD ST	SANTA ANA	CA	92705
396-112-13	BARBARA PENA	1106 E JOANA DR	SANTA ANA	CA	92705
396-112-14	MARCELINO A &	1110 JOANA DR	SANTA ANA	CA	92705
396-112-15	BERNARDO & LC	1114 JOANA DR	SANTA ANA	CA	92705
396-113-01	GRACIELA PEREZ	1202 JOANA DR	SANTA ANA	CA	92705
396-113-02	NATALIA E ORTIZ	1206 E JOANA DR	SANTA ANA	CA	92705
396-113-03	HUNG ANH NGC	4217 W GREELEY ST	BROKEN ARROW	OK	74012
396-113-03	RESIDENT	1210 JOANA DR	SANTA ANA	CA	92705
396-113-04	MENDIZABAL FRI	1214 E JOANA DR	SANTA ANA	CA	92705
396-113-05	JUAN JOSE HERN	1218 JOANA DR	SANTA ANA	CA	92705
396-113-06	LYNDA B FOLSOI	2413 N HATHAWAY ST	SANTA ANA	CA	92705
396-113-07/241	STEFANO ROCCC	2410 N OLD GRAND	SANTA ANA	CA	92705
396-113-08	RUBEN A FERNA	2421 N HATHAWAY ST	SANTA ANA	CA	92705
396-113-09	FRANK & ANGEL	2425 N HATHAWAY ST	SANTA ANA	CA	92705

396-113-10	SEILABI ACQUIS	2350 MORELIA PL	FULLERTON	CA	92835
396-113-10	OCCUPANT	2424 N GRAND AVE STE K	SANTA ANA	CA	92705
396-113-10	OCCUPANT	2424 N GRAND AVE STE J	SANTA ANA	CA	92705
396-113-10	OCCUPANT	2424 N GRAND AVE STE H	SANTA ANA	CA	92705
396-113-10	OCCUPANT	2424 N GRAND AVE STE G	SANTA ANA	CA	92705
396-113-10	OCCUPANT	2424 N GRAND AVE STE F	SANTA ANA	CA	92705
396-113-10	OCCUPANT	2424 N GRAND AVE STE C	SANTA ANA	CA	92705
396-113-10	OCCUPANT	2424 N GRAND AVE STE B	SANTA ANA	CA	92705
396-113-10	OCCUPANT	2424 N GRAND AVE STE A	SANTA ANA	CA	92705
396-113-10	OCCUPANT	2428 N GRAND AVE STE K	SANTA ANA	CA	92705
396-113-10	OCCUPANT	2428 N GRAND AVE STE H	SANTA ANA	CA	92705
396-113-10	OCCUPANT	2428 N GRAND AVE STE G	SANTA ANA	CA	92705
396-113-10	OCCUPANT	2428 N GRAND AVE STE F	SANTA ANA	CA	92705
396-113-10	OCCUPANT	2428 N GRAND AVE STE E	SANTA ANA	CA	92705
396-113-10	OCCUPANT	2428 N GRAND AVE STE A	SANTA ANA	CA	92705
396-121-10	JEFF & CHRISTIN	1209 E PARK LN	SANTA ANA	CA	92705
396-121-11	DANIEL YERENA	1213 E PARK LN	SANTA ANA	CA	92705
396-121-12	ZACHARY MARK	1217 E PARK LN	SANTA ANA	CA	92705
396-121-13	ROBERT L FROST	P O BOX 6417	CRESTLINE	CA	92325
396-121-13	RESIDENT	1221 E PARK LN	SANTA ANA	CA	92705
396-121-14	DIANE S CRAND	1225 E PARK LN	SANTA ANA	CA	92705
396-121-15	HUGO POMPA /	1222 E PARK LN	SANTA ANA	CA	92705
396-121-16	RICHARD R & CH	1218 E PARK LN	SANTA ANA	CA	92705
396-121-17	ROBERTO & MAI	1214 E PARK LN	SANTA ANA	CA	92705
396-121-18	PHAM LEIF M	1210 E PARK LN	SANTA ANA	CA	92705
396-121-20	SIGIFREDO & ALI	1202 E PARK LN	SANTA ANA	CA	92705
396-121-21	ERIC DI LEO	1112 E PARK LN	SANTA ANA	CA	92705
396-121-22	ROBERT & KARE	1108 E PARK LN	SANTA ANA	CA	92705
396-121-23	RIGOBERTO DIAZ	1104 E PARK LN	SANTA ANA	CA	92705
396-121-24	MACLAND INVEST	5960 CANOGA AVE	WOODLAND HIL	CA	91367
396-121-24	OCCUPANT	2650 N GRAND AVE	SANTA ANA	CA	92705
396-121-27	PAUL HERTFELDI	720 E CULVER AVE	ORANGE	CA	92866
396-121-27	RESIDENT	2626 N GRAND AVE	SANTA ANA	CA	92705
396-121-27	RESIDENT	2624 N GRAND AVE	SANTA ANA	CA	92705
396-121-27	RESIDENT	2620 N GRAND AVE	SANTA ANA	CA	92705
396-121-28	SANTA ANA UNI	2121 N GRAND AVE	SANTA ANA	CA	92705
396-121-28	RESIDENT	2610 N GRAND AVE	SANTA ANA	CA	92705
396-121-29	GRANDANA LLC	12654 MISTY PL	CERRITOS	CA	90703
396-121-29	OCCUPANT	2602 N GRAND AVE	SANTA ANA	CA	92705
396-121-30	GEORGE H BRET	2309 PACIFIC COAST HWY # 201	HERMOSA BEACH	CA	90254
396-121-30	RESIDENT	1200 FAIRHAVEN AVE APT 1	SANTA ANA	CA	92705
396-121-30	RESIDENT	1200 FAIRHAVEN AVE APT 2	SANTA ANA	CA	92705
396-121-30	RESIDENT	1200 FAIRHAVEN AVE APT 3	SANTA ANA	CA	92705
396-121-30	RESIDENT	1200 FAIRHAVEN AVE APT 4	SANTA ANA	CA	92705
396-121-30	RESIDENT	1200 FAIRHAVEN AVE APT 5	SANTA ANA	CA	92705
396-121-30	RESIDENT	1200 FAIRHAVEN AVE APT 6	SANTA ANA	CA	92705
396-121-30	RESIDENT	1200 FAIRHAVEN AVE APT 7	SANTA ANA	CA	92705

396-121-30	RESIDENT	1200 FAIRHAVEN AVE APT 56	SANTA ANA	CA	92705
396-121-30	RESIDENT	1200 FAIRHAVEN AVE APT 57	SANTA ANA	CA	92705
396-121-30	RESIDENT	1200 FAIRHAVEN AVE APT 58	SANTA ANA	CA	92705
396-121-30	RESIDENT	1200 FAIRHAVEN AVE APT 59	SANTA ANA	CA	92705
396-121-30	RESIDENT	1200 FAIRHAVEN AVE APT 60	SANTA ANA	CA	92705
396-121-30	RESIDENT	1200 FAIRHAVEN AVE APT 61	SANTA ANA	CA	92705
396-121-30	RESIDENT	1200 FAIRHAVEN AVE APT 62	SANTA ANA	CA	92705
396-121-30	RESIDENT	1200 FAIRHAVEN AVE APT 63	SANTA ANA	CA	92705
396-121-30	RESIDENT	1200 FAIRHAVEN AVE APT 64	SANTA ANA	CA	92705
396-121-30	RESIDENT	1200 FAIRHAVEN AVE APT 65	SANTA ANA	CA	92705
396-121-30	RESIDENT	1200 FAIRHAVEN AVE APT 66	SANTA ANA	CA	92705
396-121-30	RESIDENT	1200 FAIRHAVEN AVE APT 67	SANTA ANA	CA	92705
396-121-30	RESIDENT	1200 FAIRHAVEN AVE APT 68	SANTA ANA	CA	92705
396-121-30	RESIDENT	1200 FAIRHAVEN AVE APT 69	SANTA ANA	CA	92705
396-121-30	RESIDENT	1200 FAIRHAVEN AVE APT 70	SANTA ANA	CA	92705
396-121-30	RESIDENT	1200 FAIRHAVEN AVE APT 71	SANTA ANA	CA	92705
396-121-30	RESIDENT	1200 FAIRHAVEN AVE APT 72	SANTA ANA	CA	92705
396-121-30	RESIDENT	1200 FAIRHAVEN AVE APT 73	SANTA ANA	CA	92705
396-121-30	RESIDENT	1200 FAIRHAVEN AVE APT 74	SANTA ANA	CA	92705
396-121-30	RESIDENT	1200 FAIRHAVEN AVE APT 75	SANTA ANA	CA	92705
396-121-30	RESIDENT	1200 FAIRHAVEN AVE APT 76	SANTA ANA	CA	92705
396-121-30	RESIDENT	1200 FAIRHAVEN AVE APT 77	SANTA ANA	CA	92705
396-121-30	RESIDENT	1200 FAIRHAVEN AVE APT 78	SANTA ANA	CA	92705
396-121-30	RESIDENT	1200 FAIRHAVEN AVE APT 79	SANTA ANA	CA	92705
396-121-30	RESIDENT	1200 FAIRHAVEN AVE APT 80	SANTA ANA	CA	92705
396-121-30	RESIDENT	1200 FAIRHAVEN AVE APT 81	SANTA ANA	CA	92705
396-121-30	RESIDENT	1200 FAIRHAVEN AVE APT 82	SANTA ANA	CA	92705
396-121-30	RESIDENT	1200 FAIRHAVEN AVE APT 83	SANTA ANA	CA	92705
396-121-30	RESIDENT	1200 FAIRHAVEN AVE APT 84	SANTA ANA	CA	92705
396-121-30	RESIDENT	1200 FAIRHAVEN AVE APT 85	SANTA ANA	CA	92705
396-121-30	RESIDENT	1200 FAIRHAVEN AVE APT 86	SANTA ANA	CA	92705
396-121-30	RESIDENT	1200 FAIRHAVEN AVE APT 87	SANTA ANA	CA	92705
396-121-30	RESIDENT	1200 FAIRHAVEN AVE APT 88	SANTA ANA	CA	92705
396-121-30	RESIDENT	1200 FAIRHAVEN AVE APT 89	SANTA ANA	CA	92705
396-121-31	ORANGE COUNT	2630 N GRAND AVE	SANTA ANA	CA	92705
396-122-02	CHARLES WASHI	1109 E PARK LN	SANTA ANA	CA	92705
396-122-03	MARIA E GRANT	1105 E PARK LN	SANTA ANA	CA	92705
396-122-04	RAFAEL COYAZO	1101 E PARK LN	SANTA ANA	CA	92705
396-122-05	JACQUELINE L T	2542 BRYNWOOD ST	SANTA ANA	CA	92705
396-122-06	MARY E NGAYAN	2538 BRYNWOOD ST	SANTA ANA	CA	92705
396-122-07	HUGH Q & LINH	2534 BRYNWOOD ST	SANTA ANA	CA	92705
396-122-08	JOSE LOPEZ	2530 BRYNWOOD ST	SANTA ANA	CA	92841
396-122-09	GEORGE H BRET	2309 PACIFIC COAST HWY # 201	HERMOSA BEACH	CA	90254
396-122-09	RESIDENT	1100 FAIRHAVEN AVE APT 101	SANTA ANA	CA	92705
396-122-09	RESIDENT	1100 FAIRHAVEN AVE APT 102	SANTA ANA	CA	92705
396-122-09	RESIDENT	1100 FAIRHAVEN AVE APT 103	SANTA ANA	CA	92705
396-122-09	RESIDENT	1100 FAIRHAVEN AVE APT 104	SANTA ANA	CA	92705

396-122-09	RESIDENT	1100 FAIRHAVEN AVE APT 153	SANTA ANA	CA	92705
396-122-09	RESIDENT	1100 FAIRHAVEN AVE APT 154	SANTA ANA	CA	92705
396-122-09	RESIDENT	1100 FAIRHAVEN AVE APT 155	SANTA ANA	CA	92705
396-122-09	RESIDENT	1100 FAIRHAVEN AVE APT 156	SANTA ANA	CA	92705
396-122-09	RESIDENT	1100 FAIRHAVEN AVE APT 157	SANTA ANA	CA	92705
396-122-09	RESIDENT	1100 FAIRHAVEN AVE APT 158	SANTA ANA	CA	92705
396-122-09	RESIDENT	1100 FAIRHAVEN AVE APT 159	SANTA ANA	CA	92705
396-122-09	RESIDENT	1100 FAIRHAVEN AVE APT 160	SANTA ANA	CA	92705
396-122-09	RESIDENT	1100 FAIRHAVEN AVE APT 161	SANTA ANA	CA	92705
396-122-09	RESIDENT	1100 FAIRHAVEN AVE APT 162	SANTA ANA	CA	92705
396-122-09	RESIDENT	1100 FAIRHAVEN AVE APT 163	SANTA ANA	CA	92705
396-122-09	RESIDENT	1100 FAIRHAVEN AVE APT 164	SANTA ANA	CA	92705
396-122-09	RESIDENT	1100 FAIRHAVEN AVE APT 165	SANTA ANA	CA	92705
396-122-09	RESIDENT	1100 FAIRHAVEN AVE APT 166	SANTA ANA	CA	92705
396-122-09	RESIDENT	1100 FAIRHAVEN AVE APT 167	SANTA ANA	CA	92705
396-122-09	RESIDENT	1100 FAIRHAVEN AVE APT 168	SANTA ANA	CA	92705
396-122-09	RESIDENT	1100 FAIRHAVEN AVE APT 169	SANTA ANA	CA	92705
396-122-09	RESIDENT	1100 FAIRHAVEN AVE APT 170	SANTA ANA	CA	92705
396-122-09	RESIDENT	1100 FAIRHAVEN AVE APT 171	SANTA ANA	CA	92705
396-122-09	RESIDENT	1100 FAIRHAVEN AVE APT 172	SANTA ANA	CA	92705
396-122-09	RESIDENT	1100 FAIRHAVEN AVE APT 173	SANTA ANA	CA	92705
396-231-01	FABIAN & GABRI	1119 CHERRY ST	SANTA ANA	CA	92705
396-231-02	ROBERT E PERRY	1113 CHERRY ST	SANTA ANA	CA	92705
396-231-08	JOSE & ROSA M	1120 CHERRY	SANTA ANA	CA	92705
396-232-01	JOSEPH G & OLG	2409 N EASTWOOD AVE	SANTA ANA	CA	92705
396-232-02	JASON & KATHIA	2405 N EASTWOOD AVE	SANTA ANA	CA	92705
396-232-03	RAYMOND & FR	2401 N EASTWOOD AVE	SANTA ANA	CA	92705
396-232-04	CHRISTINA WAN	2335 N EASTWOOD AVE	SANTA ANA	CA	92705
396-232-05	NGOC NHUNG T	2331 N EASTWOOD ST	SANTA ANA	CA	92705
396-232-06	LUIS JORGE BAR	2327 N EASTWOOD AVE	SANTA ANA	CA	92705
396-232-07	ROBERT M & CA	2323 N EASTWOOD AVE	SANTA ANA	CA	92705
396-232-11,26	FRANK E TURNEI	4256 S BRENTWOOD LN	COEUR D ALENE ID		83814
396-232-11	RESIDENT	2320 N HATHAWAY ST	SANTA ANA	CA	92705
396-232-26	RESIDENT	2319 N HATHAWAY ST	SANTA ANA	CA	92705
396-232-12	GLORIA A COOK	2324 N HATHAWAY ST	SANTA ANA	CA	92705
396-232-13	VIEN & DUYEN K	2328 N HATHAWAY ST	SANTA ANA	CA	92705
396-232-14	JUAN TORREZ	2332 N HATHAWAY ST	SANTA ANA	CA	92705
396-232-15	STEVEN R GOME	2336 N HATHAWAY ST	SANTA ANA	CA	92705
396-232-16	ERNST E & LEEAI	2402 N HATHAWAY ST	SANTA ANA	CA	92705
396-232-17	JOSEPH R HEWLI	2406 N HATHAWAY ST	SANTA ANA	CA	92705
396-232-18	ELIZABETH ANNI	2410 N HATHAWAY ST	SANTA ANA	CA	92705
396-232-19	TARA MARIE CO	2409 N HATHAWAY ST	SANTA ANA	CA	92705
396-232-20	SARAH L BERTRA	2405 N HATHAWAY ST	SANTA ANA	CA	92705
396-232-21	JAMES W MINNI	2401 N HATHAWAY ST	SANTA ANA	CA	92705
396-232-22	PATRICIA & FEDI	2335 N HATHWAY ST	SANTA ANA	CA	92705
396-232-23	ANTONIO ESQUI	2331 N HATHAWAY ST	SANTA ANA	CA	92705
396-232-24	JOSE RODRIGUE	2327 N HATHAWAY	SANTA ANA	CA	92705

396-232-37	RESIDENT	2340 N GRAND AVE APT 13	SANTA ANA	CA	92705
396-232-37	RESIDENT	2340 N GRAND AVE APT 14	SANTA ANA	CA	92705
396-232-37	RESIDENT	2340 N GRAND AVE APT 15	SANTA ANA	CA	92705
396-232-37	RESIDENT	2340 N GRAND AVE APT 16	SANTA ANA	CA	92705
396-232-37	RESIDENT	2340 N GRAND AVE APT 17	SANTA ANA	CA	92705
396-232-37	RESIDENT	2340 N GRAND AVE APT 18	SANTA ANA	CA	92705
396-232-37	RESIDENT	2340 N GRAND AVE APT 19	SANTA ANA	CA	92705
396-232-37	RESIDENT	2340 N GRAND AVE APT 20	SANTA ANA	CA	92705
396-232-37	RESIDENT	2340 N GRAND AVE APT 21	SANTA ANA	CA	92705
396-232-37	RESIDENT	2340 N GRAND AVE APT 22	SANTA ANA	CA	92705
396-232-37	RESIDENT	2340 N GRAND AVE APT 23	SANTA ANA	CA	92705
396-232-37	RESIDENT	2340 N GRAND AVE APT 24	SANTA ANA	CA	92705
396-232-37	RESIDENT	2340 N GRAND AVE APT 25	SANTA ANA	CA	92705
396-232-37	RESIDENT	2340 N GRAND AVE APT 26	SANTA ANA	CA	92705
396-232-37	RESIDENT	2340 N GRAND AVE APT 27	SANTA ANA	CA	92705
396-232-37	RESIDENT	2340 N GRAND AVE APT 28	SANTA ANA	CA	92705
396-232-37	RESIDENT	2340 N GRAND AVE APT 29	SANTA ANA	CA	92705
396-232-37	RESIDENT	2340 N GRAND AVE APT 30	SANTA ANA	CA	92705
396-232-37	RESIDENT	2340 N GRAND AVE APT 31	SANTA ANA	CA	92705
396-232-37	RESIDENT	2340 N GRAND AVE APT 32	SANTA ANA	CA	92705
396-232-37	RESIDENT	2340 N GRAND AVE APT 33	SANTA ANA	CA	92705
396-232-37	RESIDENT	2340 N GRAND AVE APT 34	SANTA ANA	CA	92705
396-232-37	RESIDENT	2340 N GRAND AVE APT 35	SANTA ANA	CA	92705
396-232-37	RESIDENT	2340 N GRAND AVE APT 36	SANTA ANA	CA	92705
396-232-37	RESIDENT	2340 N GRAND AVE APT 37	SANTA ANA	CA	92705
396-232-37	RESIDENT	2340 N GRAND AVE APT 38	SANTA ANA	CA	92705
396-232-38	RESIDENT	1221 BEECHWOOD ST	SANTA ANA	CA	92705
396-241-02,15	SCHROEDER BRC	2332 OLD GRAND ST	SANTA ANA	CA	92705
396-241-15	OCCUPANT	2345 N GRAND AVE	SANTA ANA	CA	92705
396-241-15	OCCUPANT	2345 N GRAND AVE STE A	SANTA ANA	CA	92705
396-241-03	LOWELL K SCHR	2316 OLD GRAND ST	SANTA ANA	CA	92705
396-241-03	RESIDENT	1415 E SANTA CLARA AVE	SANTA ANA	CA	92705
396-241-04	THE SCHROEDER	7936 HORSESHOE TRAIL	ORANGE	CA	92869
396-241-04	RESIDENT	2332 OLD GRAND ST	SANTA ANA	CA	92705
396-241-09	IRMA VAGLIENT'	PO BOX 10441	SANTA ANA	CA	92711
396-241-09	RESIDENT	2414 OLD GRAND ST	SANTA ANA	CA	92705
396-241-11	JOHN PHAM	2406 N OLD GRAND ST	SANTA ANA	CA	92705
396-241-14	GREGORY J BUCI	2402 N OLD GRAND	SANTA ANA	CA	92705
396-242-04	CAROLYN J FARR	1401 E BEECHWOOD ST	SANTA ANA	CA	92705
396-242-05	CASTRO DANIEL	2221 KILSON DR	SANTA ANA	CA	92707
396-242-05	RESIDENT	1405 BEECHWOOD ST	SANTA ANA	CA	92705
396-242-06	THOMAS MICHA	1409 E BEECHWOOD ST	SANTA ANA	CA	92701
396-242-07	JA SEUNG KOO /	1413 BEECHWOOD ST	SANTA ANA	CA	92705
396-242-08	KEVIN YEAR	1417 BEECHWOOD ST	SANTA ANA	CA	92705
396-242-09	HENRY P BARTLE	642 AERONCA ST	INDEPENDENCE	OR	97351
396-242-09	RESIDENT	1421 BEECHWOOD ST	SANTA ANA	CA	92705
396-242-10	LEE ANITA FUNG	1425 BEECHWOOD ST	SANTA ANA	CA	92705

396-242-11	DAVID A PICKREI 1429 BEECHWOOD ST	SANTA ANA	CA	92705
396-242-12	DAMIAN A & ME 1433 BEECHWOOD ST	SANTA ANA	CA	92705
396-242-22	ANDY & TRISHA 1401 FRANZEN AVE	SANTA ANA	CA	92705
396-242-23	TOAN VAN LUU , 1405 FRANZEN AVE	SANTA ANA	CA	92705
396-242-24	NORA D GRIFFIN 1409 FRANZEN AVE	SANTA ANA	CA	92705
396-242-25	JOSE CABADA / (1413 FRANZEN AVE	SANTA ANA	CA	92705
396-242-26	MACIE BULL BEN 1417 FRANZEN AVE	SANTA ANA	CA	92705
396-242-27	MONA JEAN GIL 1421 FRANZEN AVE	SANTA ANA	CA	92705
396-242-28	SILVANO B & YO 1425 FRANZEN AVE	SANTA ANA	CA	92705
396-242-29	TODD & DONNA 1429 FRANZEN AVE	SANTA ANA	CA	92705
396-242-30	DONALD B & PA 1433 FRANZEN AVE	SANTA ANA	CA	92705
396-242-31	DANIEL P SIEBER 1434 FRANZEN	SANTA ANA	CA	92705
396-242-32	BEVERLY PACKAI 1430 FRANZEN	SANTA ANA	CA	92705
396-242-33	HURLBUT JAMES 1426 FRANZEN AVE	SANTA ANA	CA	92705
396-242-34	KIM FRANZEN TL 420 BARCELONA RD	SEDONA	AZ	86336
396-242-34	RESIDENT 1422 FRANZEN AVE	SANTA ANA	CA	92705
396-242-35	TINA CATO 1418 FRANZEN AVE	SANTA ANA	CA	92705
396-242-36	SARMIENTO ANI 1414 FRANZEN AVE	SANTA ANA	CA	92705
396-242-37	ALICE AGUILAR 1410 FRANZEN AVE	SANTA ANA	CA	92705
396-242-38	HIEH THO TRUO 1406 FRANZEN AVE	SANTA ANA	CA	92705
396-242-39	BARBARA OCHO 1402 FRANZEN AVE	SANTA ANA	CA	92705
396-243-02	CECILIA PINEDO 2309 OLD GRAND ST	SANTA ANA	CA	92705
396-243-03	EDGAR ADAME / 2313 OLD GRAND ST	SANTA ANA	CA	92705
396-243-04	JESSE & NORMA 2317 OLD GRAND ST	SANTA ANA	CA	92705
396-243-05	DEMI DONGMEI 6466 FRAMPTON CIR	HUNTINGTON BI	CA	92648
396-243-05	RESIDENT 2321 OLD GRAND ST	SANTA ANA	CA	92705
396-243-06	PETER DAVID VE 2325 OLD GRAND	SANTA ANA	CA	92705
396-243-07	JOHN D REICHA 2326 COTTONWOOD ST	SANTA ANA	CA	92705
396-243-08	ANGELA S GIUDI 2322 COTTONWOOD ST	SANTA ANA	CA	92705
396-243-09	LAUREN R HUNT 2318 COTTONWOOD ST	SANTA ANA	CA	92705
396-243-10	BROOKE PILON 2314 COTTONWOOD ST	SANTA ANA	CA	92705
396-243-11	SILVIA AVILA 2310 COTTONWOOD ST	SANTA ANA	CA	92705
396-243-18	PRADO MAURIC 2317 COTTONWOOD ST	SANTA ANA	CA	92705
396-243-19	LAZATIN MATHA 2321 COTTONWOOD ST	SANTA ANA	CA	92705
396-243-20	JUSTIN PHONG 2325 COTTONWOOD ST	SANTA ANA	CA	92705
396-243-21	FRANK & PATRIC 2326 N LINWOOD ST	SANTA ANA	CA	92705
396-243-22	CARYN VU 2322 N LINWOOD ST	SANTA ANA	CA	92706
396-251-01	SI DANG / DANG 2640 N LINWOOD AVE	SANTA ANA	CA	92705
396-251-02	CHRISTOPHER B 2634 N LINWOOD AVE	SANTA ANA	CA	92705
396-251-03	BLANCA TOMM 2628 N LINWOOD AVE	SANTA ANA	CA	92705
396-251-04	ISAIAH FELIX DU 1431 KEEGAN WAY	SANTA ANA	CA	92705
396-251-05	CARLOS B & ELV. 1425 E KEEGAN WAY	SANTA ANA	CA	92705
396-251-06	DAVID F MASTR 9911 SMOKEWOOD DR	VILLA PARK	CA	92861
396-251-06	RESIDENT 1419 KEEGAN WAY	SANTA ANA	CA	92705
396-251-07	ERNEST F SCHO 3824 PINE AVE	LONG BEACH	CA	90807
396-251-07	RESIDENT 1413 KEEGAN WAY	SANTA ANA	CA	92705
396-251-08	FRANK J & TRAN 1407 KEEGAN WAY	SANTA ANA	CA	92705

396-251-09	ANGEL M SALIN/ 1401 E KEEGAN WAY	SANTA ANA	CA	92705
396-251-10	DAVID L & MARI 2633 OLD GRAND ST	SANTA ANA	CA	92705
396-251-11	MJ STONE FAMILI 501 PECAN AVE	HUNTINGTON BI	CA	92648
396-251-11	RESIDENT 2641 OLD GRAND ST	SANTA ANA	CA	92705
396-251-12	CARMELINA CISI 1414 E FAIRHAVEN AVE	SANTA ANA	CA	92705
396-251-12	RESIDENT 1414 FAIRHAVEN AVE APT B	SANTA ANA	CA	92705
396-251-12	RESIDENT 1414 FAIRHAVEN AVE APT A	SANTA ANA	CA	92705
396-251-13	ORLANDO & AN 1420 FAIRHAVEN AVE	SANTA ANA	CA	92705
396-252-01	AURELIO MEDIN 2610 N LINWOOD AVE	SANTA ANA	CA	92705
396-252-02	PAMELA N BALI 2604 N LINWOOD AVE	SANTA ANA	CA	92705
396-252-03	KEVIN PAUL SPA 2540 N LINWOOD AVE	SANTA ANA	CA	92705
396-252-04	DUONG H LY / L 2534 N LINWOOD AVE	SANTA ANA	CA	92705
396-252-05	LUZ M & MARIA 1419 GROVEMONT ST	SANTA ANA	CA	92705
396-252-06	MARVIN & SUZA 1413 GROVEMONT ST	SANTA ANA	CA	92705
396-252-07	RUTH KOZAK 1407 GROVEMONT ST	SANTA ANA	CA	92705
396-252-08	SHIRLEY R OSTEF 1401 GROVEMONT ST	SANTA ANA	CA	92705
396-252-09	FRANK N MORAC 1402 KEEGAN WAY	SANTA ANA	CA	92705
396-252-10	JULIE A MILLEN 1408 KEEGAN	SANTA ANA	CA	92705
396-252-11	LLOYD W SHILL 1414 KEEGAN WAY	SANTA ANA	CA	92705
396-252-12	DAVID L SMITH 1420 KEEGAN WAY	SANTA ANA	CA	92705
396-253-01	JEANETTE R BAS 2641 N LINDWOOD AVE	SANTA ANA	CA	92705
396-253-02	THOMAS & LAUI 2635 N LINWOOD AVE	SANTA ANA	CA	92705
396-253-03	BEATRIZ & MAN 2629 N LINWOOD AVE	SANTA ANA	CA	92705
396-253-04	JAMES VIGEANT 2623 N LINWOOD AVE	SANTA ANA	CA	92705
396-253-05	ANDRES & SILVI 2617 N LINWOOD AVE	SANTA ANA	CA	92705
396-253-06	SUSAN R CHAME 2611 N LINWOOD AVE	SANTA ANA	CA	92705
396-253-07	RUTH N HULL 2605 N LINWOOD AVE	SANTA ANA	CA	92705
396-253-08/254	MARY LOU BABI 2541 N LINWOOD AVE	SANTA ANA	CA	92705
396-253-09	CATARINO R & N 2535 N LINWOOD AVE	SANTA ANA	CA	92705
396-253-10	PETER SONNENT 2529 N LINWOOD AVE	SANTA ANA	CA	92705
396-253-15	NORMAN W DO 6714 E YOSEMITE AVE	ORANGE	CA	92867
396-253-15	RESIDENT 2525 N LINWOOD AVE	SANTA ANA	CA	92705
396-253-16	DENNIS GENE B 2521 N LINWOOD AVE	SANTA ANA	CA	92705
396-253-17	ROBERT D VALEF 2517 N LINWOOD AVE	SANTA ANA	CA	92705
396-253-18	FRANCIS J WOOI 2513 N LINWOOD ST	SANTA ANA	CA	92705
396-253-19	LORNA N ROSET 2509 N LINWOOD ST	SANTA ANA	CA	92705
396-253-20	PEGGY SUE DEM 2505 N LINWOOD ST	SANTA ANA	CA	92705
396-253-21	BRENT D & TINA 2501 N LINWOOD AVE	SANTA ANA	CA	92705
396-253-27	ANTHONY NGUY 2425 N LINWOOD AVE	SANTA ANA	CA	92705
396-253-28	JORGE & CECILIA 2421 N LINWOOD AVE	SANTA ANA	CA	92705
396-253-29	KIRK R & JOY S P 2417 N LINWOOD AVE	SANTA ANA	CA	92705
396-253-30	LEANOS JOHN D 1430 CHERRY ST	SANTA ANA	CA	92705
396-253-31	EMILIE M LAFFO 1426 CHERRY ST	SANTA ANA	CA	92705
396-253-32	JUANITA O VASC 1422 CHERRY ST	SANTA ANA	CA	92705
396-253-33	MARC & KATY S 1418 CHERRY ST	SANTA ANA	CA	92705
396-253-34	CHERRYL BAKER 1414 CHERRY ST	SANTA ANA	CA	92705
396-253-35	GILBERT MOLIN 1410 CHERRY ST	SANTA ANA	CA	92705

396-253-36	JAVIER GARCIA	2421 OLD GRAND ST	SANTA ANA	CA	92705
396-254-01	BRENT PHILIP &	2526 N LINWOOD ST	SANTA ANA	CA	92705
396-254-03	DOUGLAS J KLAL	2516 LINWOOD AVE	SANTA ANA	CA	92705
396-254-04	DAVID J GUPTILL	1419 JOANA DR	SANTA ANA	CA	92705
396-254-05	GERALD KIYOSHI	1415 JOANNA DR	SANTA ANA	CA	92705
396-254-06	JEFFREY N GARO	1411 JOANA DR	SANTA ANA	CA	92705
396-254-07	CARLO T & MAR'	1407 JOANA DR	SANTA ANA	CA	92705
396-254-08	DANNY AN NGU'	1401 JOANA DR	SANTA ANA	CA	92705
396-254-09	DONALD E BURN	1402 GROVEMONT ST	SANTA ANA	CA	92705
396-254-10	FRANCISCO F ZA	1406 GROVEMONT ST	SANTA ANA	CA	92705
396-254-11	LINDA CASTOR R	1410 GROVEMONT ST	SANTA ANA	CA	92705
396-254-12	REESE M RILEY	1414 GROVEMONT ST	SANTA ANA	CA	92705
396-254-13	RONALD W BENI	1418 GROVEMONT ST	SANTA ANA	CA	92705
396-255-01	WERNER RICHAF	2510 N LINWOOD AVE	SANTA ANA	CA	92705
396-255-02	ANGELO D & KAI	2506 N LINWOOD AVE	SANTA ANA	CA	92705
396-255-03	GREGORY B ATM	1421 CHERRY ST	SANTA ANA	CA	92705
396-255-04	JAMES A BROWI	1417 CHERRY ST	SANTA ANA	CA	92705
396-255-05	PATRICIA LEE NE	1413 CHERRY	SANTA ANA	CA	92705
396-255-06	AGNESE ROCCO	1409 CHERRY ST	SANTA ANA	CA	92705
396-255-07	ROBERT JAMES \	2435 OLD GRAND ST	SANTA ANA	CA	92705
396-255-08	SHELLY L SECKEN	1402 JOANA DR	SANTA ANA	CA	92705
396-255-09	THOMAS ZABY /	1410 JOANA DR	SANTA ANA	CA	92705
396-255-10	JOSE L DELGADC	1418 JOANA DR	SANTA ANA	CA	92705
396-261-01	LPSN LLC	1055 ORTEGA WAY #B	PLACENTIA	CA	92870
396-361-01	ANTRANIK G KAS	17950 LAKE VISTA DR	ENCINO	CA	91316
396-361-01	OCCUPANT	2637 N GRAND AVE	SANTA ANA	CA	92705
396-361-01	OCCUPANT	2639 N GRAND AVE	SANTA ANA	CA	92705
396-361-02	FAIRHAVEN APA	PO BOX 4747	OAK BROOK	IL	60522
396-361-02	RESIDENT	1300 FAIRHAVEN AVE APT 1	SANTA ANA	CA	92705
396-361-02	RESIDENT	1300 FAIRHAVEN AVE APT 2	SANTA ANA	CA	92705
396-361-02	RESIDENT	1300 FAIRHAVEN AVE APT 3	SANTA ANA	CA	92705
396-361-02	RESIDENT	1300 FAIRHAVEN AVE APT 4	SANTA ANA	CA	92705
396-361-02	RESIDENT	1300 FAIRHAVEN AVE APT 5	SANTA ANA	CA	92705
396-361-02	RESIDENT	1300 FAIRHAVEN AVE APT 6	SANTA ANA	CA	92705
396-361-02	RESIDENT	1300 FAIRHAVEN AVE APT 7	SANTA ANA	CA	92705
396-361-02	RESIDENT	1300 FAIRHAVEN AVE APT 8	SANTA ANA	CA	92705
396-361-02	RESIDENT	1300 FAIRHAVEN AVE APT 9	SANTA ANA	CA	92705
396-361-02	RESIDENT	1300 FAIRHAVEN AVE APT 10	SANTA ANA	CA	92705
396-361-02	RESIDENT	1300 FAIRHAVEN AVE APT 11	SANTA ANA	CA	92705
396-361-02	RESIDENT	1300 FAIRHAVEN AVE APT 12	SANTA ANA	CA	92705
396-361-02	RESIDENT	1300 FAIRHAVEN AVE APT 13	SANTA ANA	CA	92705
396-361-02	RESIDENT	1300 FAIRHAVEN AVE APT 14	SANTA ANA	CA	92705
396-361-02	RESIDENT	1300 FAIRHAVEN AVE APT 15	SANTA ANA	CA	92705
396-361-02	RESIDENT	1300 FAIRHAVEN AVE APT 16	SANTA ANA	CA	92705
396-361-02	RESIDENT	1300 FAIRHAVEN AVE APT 17	SANTA ANA	CA	92705
396-361-02	RESIDENT	1300 FAIRHAVEN AVE APT 18	SANTA ANA	CA	92705
396-361-02	RESIDENT	1300 FAIRHAVEN AVE APT 19	SANTA ANA	CA	92705

396-361-02	RESIDENT	2601 N GRAND AVE APT 306	SANTA ANA	CA	92705
396-361-02	RESIDENT	2601 N GRAND AVE APT 307	SANTA ANA	CA	92705
396-361-02	RESIDENT	2601 N GRAND AVE APT 308	SANTA ANA	CA	92705
396-361-02	RESIDENT	2601 N GRAND AVE APT 309	SANTA ANA	CA	92705
396-361-02	RESIDENT	2601 N GRAND AVE APT 310	SANTA ANA	CA	92705
396-361-02	RESIDENT	2601 N GRAND AVE APT 311	SANTA ANA	CA	92705
396-361-02	RESIDENT	2601 N GRAND AVE APT 312	SANTA ANA	CA	92705
396-361-02	RESIDENT	2601 N GRAND AVE APT 313	SANTA ANA	CA	92705
396-361-02	RESIDENT	2601 N GRAND AVE APT 314	SANTA ANA	CA	92705
396-361-02	RESIDENT	2601 N GRAND AVE APT 315	SANTA ANA	CA	92705
396-361-02	RESIDENT	2601 N GRAND AVE APT 316	SANTA ANA	CA	92705
396-361-02	RESIDENT	2601 N GRAND AVE APT 325	SANTA ANA	CA	92705
396-361-02	RESIDENT	2601 N GRAND AVE APT 326	SANTA ANA	CA	92705
396-361-02	RESIDENT	2601 N GRAND AVE APT 327	SANTA ANA	CA	92705
396-361-02	RESIDENT	2601 N GRAND AVE APT 328	SANTA ANA	CA	92705
396-361-02	RESIDENT	2601 N GRAND AVE APT 329	SANTA ANA	CA	92705
396-361-02	RESIDENT	2601 N GRAND AVE APT 330	SANTA ANA	CA	92705
396-361-02	RESIDENT	2601 N GRAND AVE APT 331	SANTA ANA	CA	92705
396-361-02	RESIDENT	2601 N GRAND AVE APT 332	SANTA ANA	CA	92705
396-361-02	OCCUPANT	1300 FAIRHAVEN AVE OFC	SANTA ANA	CA	92705
396-361-05	OCCUPANT	GRAND AVENUE 16381 SCIENTIFIC	IRVINE	CA	92618
396-361-05	OCCUPANT	2501 N GRAND AVE	SANTA ANA	CA	92705
396-361-05	OCCUPANT	2511 N GRAND AVE	SANTA ANA	CA	92705
396-361-05	OCCUPANT	2521 N GRAND AVE STE A	SANTA ANA	CA	92705
396-361-05	OCCUPANT	2521 N GRAND AVE STE B	SANTA ANA	CA	92705
396-361-05	OCCUPANT	2521 N GRAND AVE STE C	SANTA ANA	CA	92705
396-361-05	OCCUPANT	2521 N GRAND AVE STE D	SANTA ANA	CA	92705
396-361-05	OCCUPANT	2521 N GRAND AVE STE E	SANTA ANA	CA	92705
396-361-05	OCCUPANT	2521 N GRAND AVE STE F	SANTA ANA	CA	92705
396-361-05	OCCUPANT	2522 N GRAND AVE	SANTA ANA	CA	92705
396-361-05	OCCUPANT	2525 N GRAND AVE STE Z	SANTA ANA	CA	92705
396-361-05	OCCUPANT	2525 N GRAND AVE STE Y	SANTA ANA	CA	92705
396-361-05	OCCUPANT	2525 N GRAND AVE STE X	SANTA ANA	CA	92705
396-361-05	OCCUPANT	2525 N GRAND AVE STE W	SANTA ANA	CA	92705
396-361-05	OCCUPANT	2525 N GRAND AVE STE V	SANTA ANA	CA	92705
396-361-05	OCCUPANT	2525 N GRAND AVE STE U	SANTA ANA	CA	92705
396-361-05	OCCUPANT	2525 N GRAND AVE STE T	SANTA ANA	CA	92705
396-361-05	OCCUPANT	2525 N GRAND AVE STE S	SANTA ANA	CA	92705
396-361-05	OCCUPANT	2525 N GRAND AVE STE R	SANTA ANA	CA	92705
396-361-05	OCCUPANT	2525 N GRAND AVE STE L	SANTA ANA	CA	92705
396-361-05	OCCUPANT	2525 N GRAND AVE STE H	SANTA ANA	CA	92705
396-361-05	OCCUPANT	2525 N GRAND AVE STE G	SANTA ANA	CA	92705
396-361-05	OCCUPANT	2525 N GRAND AVE STE F	SANTA ANA	CA	92705
396-361-05	OCCUPANT	2525 N GRAND AVE STE E	SANTA ANA	CA	92705
396-361-05	OCCUPANT	2525 N GRAND AVE STE D	SANTA ANA	CA	92705
396-361-05	OCCUPANT	2525 N GRAND AVE STE A	SANTA ANA	CA	92705
396-361-06	OCCUPANT	TATARIAN SARKI 8469 BEACH CIR	CYPRESS	CA	90630

396-361-07	GRAND AVE HOI 6323 N AVONDALE AVE	CHICAGO	IL	60631
396-361-07	OCCUPANT 2425 S GRAND AVE	SANTA ANA	CA	92705
396-361-07	OCCUPANT 2435 N GRAND AVE	SANTA ANA	CA	92705
396-371-01	CUONG QUOC H 2634 OLD GRAND ST	SANTA ANA	CA	92705
396-371-02	GABRIEL P GONZ 2630 OLD GRAND ST	SANTA ANA	CA	92705
396-371-03	GARNET A CROV 2626 OLD GRAND ST	SANTA ANA	CA	92705
396-371-04	MARIO A & LAUI 2622 OLD GRAND ST	SANTA ANA	CA	92705
396-371-05	GLORIA E ARROY 2618 OLD GRAND ST	SANTA ANA	CA	92705
396-371-06	ZAKARY ADAM K 2614 OLD GRAND ST	SANTA ANA	CA	92705
396-371-07	MARIA R MARTII 2610 OLD GRAND ST	SANTA ANA	CA	92705
396-371-08	IVONNE VELASQ 2606 OLD GRAND ST	SANTA ANA	CA	92705
396-371-09	DONALD JAMES 2602 OLD GRAND ST	SANTA ANA	CA	92705
396-371-10	MYNOR A LIMA 2601 JACARANDA ST	SANTA ANA	CA	92705
396-371-19	JUVE & ANA MA 2605 JACARANDA ST	SANTA ANA	CA	92705
396-371-20	VICKIE A HUMPH 8439 SUNSET TRAIL PL# G	RANCHO CUCAM	CA	91730
396-371-20	RESIDENT 2607 JACARANDA ST	SANTA ANA	CA	92705
396-371-21	HERNAN FONSEC 2609 JACARANDA ST	SANTA ANA	CA	92705
396-371-22	BAO NGUYEN 2611 JACARANDA AVE	SANTA ANA	CA	92705
396-371-23	PATRICK BURKE 2613 JACARANDA	SANTA ANA	CA	92705
396-371-24	THOMAS S TODD 936 E EVERETT PL	ORANGE	CA	92867
396-371-24	RESIDENT 2615 JACARANDA ST	SANTA ANA	CA	92705
396-371-25	LINDA RUTH FRA 2617 JACARANDA ST	SANTA ANA	CA	92706
396-371-26	LINDA RUTH FRA 2619 JACARANDA AVE	SANTA ANA	CA	92705
396-371-27	RALPH & MARIC 2621 JACARANDA ST	SANTA ANA	CA	92705
396-371-28	PRICILA MAGALI 2623 JACARANDA ST	SANTA ANA	CA	92705
396-371-29	KATHRYN JUNE C 2625 JACARANDA ST	SANTA ANA	CA	92705
396-371-30	AMY FARRELL 2627 JACARANDA ST	SANTA ANA	CA	92705
396-371-31	LUZ D STEWART 2629 JACARANDA ST	SANTA ANA	CA	92705
396-371-32	JUAN F PARRA 2631 JACARANDA ST	SANTA ANA	CA	92705
396-371-33	YOLANDA M ZUC 2633 JACARANDA ST	SANTA ANA	CA	92705
396-371-34	MARY V WENTW 2635 JACARANDA ST	SANTA ANA	CA	92705
396-372-11	SHIGEO J KUSAN 715 EMERSON	ORANGE	CA	92865
396-372-11	RESIDENT 2522 O JACARANDA ST	SANTA ANA	CA	92705
396-372-20	CINDY J & EDGA 2505 JACARANDA ST	SANTA ANA	CA	92705
396-372-25	VIRGINIA M IRIA 2522 OLD GRAND ST	SANTA ANA	CA	92705
396-372-26	CRAIG FROMM 2518 OLD GRAND AVE	SANTA ANA	CA	92705
396-372-27	CLARISA C & ALF 2514 OLD GRAND AVE	SANTA ANA	CA	92705
396-372-28	DONALD R BUISI 2510 OLD GRAND ST	SANTA ANA	CA	92705
396-372-29	FONG MICHAEL 2506 OLD GRAND AVE	SANTA ANA	CA	92705
396-372-30	MARCO A QUINC 2502 OLD GRAND ST	SANTA ANA	CA	92705
396-372-31	MATTHEW PRICI 2636 JACARANDA ST	SANTA ANA	CA	92705
396-372-32	IAN F SANCHEZ 2634 JACARANDA AVE	SANTA ANA	CA	92705
396-372-33	THANH DUC NGI 2632 JACARANDA AVE	SANTA ANA	CA	92705
396-372-34	ISKANDAR ICHW 2630 JACARANDA ST	SANTA ANA	CA	92705
396-372-35	SUSANA ALEMD, 2628 JACARANDA ST	SANTA ANA	CA	92705
396-372-36	ROGER T LAPPIN 2626 JACARANDA AVE	SANTA ANA	CA	92705
396-372-37	KWAN H PANG / 2624 JACARANDA AVE	SANTA ANA	CA	92705

396-372-38	THEODORE SCOT 2622 JACARANDA ST	SANTA ANA	CA	92705
396-372-39	DUC H MAI / MA 2620 JACARANDA AVE	SANTA ANA	CA	92705
396-372-40	CRAIG DION JOH 2618 JACARANDA AVE	SANTA ANA	CA	92705
396-372-41	GARCIA JUAN CA 2616 JACARANDA AVE	SANTA ANA	CA	92705
396-372-42	VALDOVINOS LU 2614 JACARANDA AVE	SANTA ANA	CA	92705
396-372-43	LOLEEN JOY KLU 8602 LARTHORN DR	HUNTINGTON BI	CA	92646
396-372-43	RESIDENT 2612 JACARANDA ST	SANTA ANA	CA	92705
396-372-44	ELMA VAZQUEZ 2610 JACARANDA AVE	SANTA ANA	CA	92705
396-372-45	DUY LAM / LAM 1712 N GLENVIEW AVE	ANAHEIM	CA	92807
396-372-45	RESIDENT 2608 JACARANDA ST	SANTA ANA	CA	92705
396-372-46	MINDY & ALAN C 2606 JACARANDA ST	SANTA ANA	CA	92705
396-372-47	JOSE NELSON RA 3332 E RUTH PL	ORANGE	CA	92869
396-372-47	RESIDENT 2604 JACARANDA ST	SANTA ANA	CA	92705
396-372-48	OSCAR & ELMA C 2602 JACARANDA AVE	SANTA ANA	CA	92705
396-372-49	WILLIAM A & RE 2528 JACARANDA AVE	SANTA ANA	CA	92705
396-372-50	ROCIO FLORES 2526 JACARANDA AVE	SANTA ANA	CA	92705
396-372-51	GILBERTO VILLA C 2520 JACARANDA ST	SANTA ANA	CA	92705
396-372-52	BLANCA J RIOS 2518 JACARANDA AVE	SANTA ANA	CA	92705
396-372-53	KEVIN J & MELAI 2516 JACARANDA AVE	SANTA ANA	CA	92705
396-372-54	MANUEL & LOUI 2514 JACARANDA AVE	SANTA ANA	CA	92705
396-372-55	GARCIA FRANCIS 2512 JACARANDA AVE	SANTA ANA	CA	92705
396-372-56	FABIO LEON ROI 2510 JACARANDA AVE	SANTA ANA	CA	92705
396-372-57	JUAN PEREZ 2508 JACARANDA ST	SANTA ANA	CA	92705
396-372-58	CONSTANCE BEI 2506 JACARANDA	SANTA ANA	CA	92705
396-372-59	DELFINO HERREI 2504 JACARANDA AVE	SANTA ANA	CA	92705
396-372-60	JOSE LUIS & ALII 2502 JACARANDA AVE	SANTA ANA	CA	92705
396-372-61	MARIA DEL CARI 2501 JACARANDA ST	SANTA ANA	CA	92705
396-372-62	ABEL & MARIA C 2503 JACARANDA AVE	SANTA ANA	CA	92705
396-372-63	ROBERT JACOB C 2509 JACARANDA ST	SANTA ANA	CA	92705
396-372-64	BEATRICE H CHA 4024 W 226TH ST	TORRANCE	CA	90505
396-372-64	RESIDENT 2511 JACARANDA ST	SANTA ANA	CA	92705
396-372-65	TODD ERNEST M 10051 BRILEY WAY	VILLA PARK	CA	92861
396-372-65	RESIDENT 2513 JACARANDA ST	SANTA ANA	CA	92705
396-372-66	JONATHAN A & ' 2515 JACARANDA ST	SANTA ANA	CA	92705
396-372-67	MARY LOU HEPF 13622 DALL LN	SANTA ANA	CA	92705
396-372-67	RESIDENT 2517 JACARANDA ST	SANTA ANA	CA	92705
396-372-68	LISVE OCHOA / C 2519 JACARANDA AVE	SANTA ANA	CA	92705
396-372-69	TOMAS CZODOR 2521 JACARANDA AVE	SANTA ANA	CA	92705
396-372-70	LUCY A SIEBERT 34022 CHULA VISTA AVE	DANA POINT	CA	92629
396-372-70	RESIDENT 2523 JACARANDA ST	SANTA ANA	CA	92705
396-372-73	MORAIMA PRES' 2440 OLD GRAND ST	SANTA ANA	CA	92705
396-372-74	JUVENTINA HERI 1313 CHERRY AVE	SANTA ANA	CA	92705
396-372-75	WILLIAM B HAST 1309 CHERRY ST	SANTA ANA	CA	92705
396-372-76	LEWIS MENDOZA 1305 CHERRY AVE	SANTA ANA	CA	92705
396-372-77	MARCOS E LOYA 1301 CHERRY ST	SANTA ANA	CA	92705
396-372-78	ELSIE YOSHIE M/ 1302 CHERRY ST	SANTA ANA	CA	92705
396-372-79	ZAMORA JESS & 1306 CHERRY ST	SANTA ANA	CA	92705

396-372-80	MARIN & NORA 1310 CHERRY ST	SANTA ANA	CA	92705
396-372-81	ABDIEL & ANGEL 1314 CHERRY ST	SANTA ANA	CA	92705
396-372-82	TRACY TRANG PI 1318 CHERRY ST	SANTA ANA	CA	92705
396-372-83	GUILLERMINA M 2201 PONDEROSA ST	SANTA ANA	CA	92705
396-372-83	RESIDENT 1322 CHERRY ST	SANTA ANA	CA	92705
892-380-02	PRISCILLA ROBIN 1533 WOOD LK	SANTA ANA	CA	92705
892-380-03	STEPHEN A & PE 1529 WOOD LK	SANTA ANA	CA	92705
892-380-04	MERRILEE GAY L 1525 WOOD LK	SANTA ANA	CA	92705
892-380-05	SCHMIDT FAMIL 1521 WOOD LK	SANTA ANA	CA	92705
892-380-06	SCOTT WAYNE N 1517 WOOD LK	SANTA ANA	CA	92705
892-380-07	MARY K ROBERT 1513 WOOD LK	SANTA ANA	CA	92705
892-380-08	ROBERT T RIFFEL 1509 WOOD LK	SANTA ANA	CA	92705
892-380-10	PATRICIA A FAIE 1501 WOOD LK	SANTA ANA	CA	92705
892-380-11	FELDNER RUTH 2632 FOREST LK	SANTA ANA	CA	92705
892-380-12	STEPHEN E ADAI 2628 FOREST LK	SANTA ANA	CA	92705
892-380-13	JAMES C LAYTON 2624 FOREST LK	SANTA ANA	CA	92705
892-380-14	DURKOVIC FAMI 2620 FOREST LK	SANTA ANA	CA	92705
892-380-15	ROGER D & VICT 2616 FOREST LK	SANTA ANA	CA	92705
892-380-16	ALBERT L & MAF 2612 FOREST LK	SANTA ANA	CA	92705
892-380-17	JULIA B LAGUNA 2608 FOREST LK	SANTA ANA	CA	92705
892-380-18	NILA LOVE 2604 FOREST LK	SANTA ANA	CA	92705
892-380-19	BRENDA M WAC 2548 FOREST LK	SANTA ANA	CA	92705
892-380-20	ERWIN W & RHC 2544 FOREST LK	SANTA ANA	CA	92705
892-380-21	ROBERT E & BOB 2540 FOREST LK	SANTA ANA	CA	92705
892-380-22	JACK HORTON 2536 FOREST LK	SANTA ANA	CA	92701
892-380-23	BARBARA ESTELI 2532 FOREST LK	SANTA ANA	CA	92705
892-380-24	KAREN WALLO 2528 FOREST LK	SANTA ANA	CA	92705
892-380-25	THOMAS & JEAN 2524 FOREST LK	SANTA ANA	CA	92705
892-380-26	ZUZANA PROCH 2520 FOREST LK	SANTA ANA	CA	92705
892-380-27	YARBERRY FAMI 2516 FOREST LK	SANTA ANA	CA	92705
892-380-28	KATHLEEN M FIT 2512 FOREST LK	SANTA ANA	CA	92705
892-380-29	JERRY & LUCILLE 2508 FOREST LK	SANTA ANA	CA	92705
892-380-30	AURORA PENNY 2504 FOREST LK	SANTA ANA	CA	92705
892-380-31	JOHN MICHAEL 2500 FOREST LK	SANTA ANA	CA	92705
892-380-32	LORI A TIGNER 2501 FOREST LK	SANTA ANA	CA	92705
892-380-33	FRANK E REYNOL 2505 FOREST LK	SANTA ANA	CA	92705
892-380-34	KITTIE W REVOC 2509 FOREST LK	SANTA ANA	CA	92705
892-380-35	SLAJER FAMILY T 2513 FOREST LK	SANTA ANA	CA	92705
892-380-36	PROFFITT FAMIL 2517 FOREST LK	SANTA ANA	CA	92705
892-380-37	DALE M JONES / 2521 FOREST LK	SANTA ANA	CA	92705
892-380-38	CLEAVER FAMIL 2525 FOREST LK	SANTA ANA	CA	92705
892-380-39	JOSE A & BRIDGI 2529 FOREST LK	SANTA ANA	CA	92701
892-380-40	CYNTHIA CALLA 2533 FOREST LK	SANTA ANA	CA	92705
892-380-41	ROGER D MASOI 2537 FOREST LK	SANTA ANA	CA	92705
892-380-42	CHRISTOPHER W 2541 FOREST LK	SANTA ANA	CA	92705
892-380-43	LAKE PARK SANT 1055 ORTEGA WAY	PLACENTIA	CA	92870
892-380-44	MARJORIE S PEL 2605 FOREST LK	SANTA ANA	CA	92705

892-380-45	DONALD HOFFM 2609 FOREST LK	SANTA ANA	CA	92705
892-380-46	MARIE T BAUER 2613 FOREST LK	SANTA ANA	CA	92705
892-380-47	STEPHAN E & JU 2617 FOREST LK	SANTA ANA	CA	92705
892-380-49	MORRIS & ARLE 2625 FOREST LK	SANTA ANA	CA	92705
892-380-50	JOLINE A BECK R 2629 FOREST LK	SANTA ANA	CA	92705
892-380-51	BRUCE D & GLOI 2633 FOREST LK	SANTA ANA	CA	92705
892-380-52	DARRALL C JACK 2632 VIEW LK	SANTA ANA	CA	92705
892-380-53	JAMES A & SHAF 2628 VIEW LK	SANTA ANA	CA	92705
892-380-54	RICHARD DILGEF 2624 VIEW LK	SANTA ANA	CA	92705
892-380-55	KATHLEEN ANN 2620 VIEW LK	SANTA ANA	CA	92705
892-380-56	ALLEN L & JOYCE 2616 VIEW LK	SANTA ANA	CA	92705
892-380-57	ROBERT C & JAN 2612 VIEW LK	SANTA ANA	CA	92705
892-380-58	MARY LOU ROBE 2608 VIEW LK	SANTA ANA	CA	92705
892-380-59	NADA SEEFELDT 2604 VIEW LK	SANTA ANA	CA	92701
892-380-60	SHARON AKA FLI 2600 VIEW LK	SANTA ANA	CA	92705
892-380-61	ALICE L WITTHAI 2605 VIEW LK	SANTA ANA	CA	92701
892-380-62	MICHAEL D & CA 2609 VIEW LK	SANTA ANA	CA	92705
892-380-63	MARY E KUYKEN 2613 VIEW LK	SANTA ANA	CA	92705
892-380-64	FREDERICK WILL 2617 VIEW LK	SANTA ANA	CA	92705
892-380-65	REILLY FAMILY T 2621 VIEW LK	SANTA ANA	CA	92705
892-380-66	PATRIQUE ANN I 2625 VIEW LK	SANTA ANA	CA	92705
892-380-67	CHERI J CANCEL 2629 VIEW LK	SANTA ANA	CA	92705
892-380-68	GILBERT L & JOY 2633 VIEW LK	SANTA ANA	CA	92705
892-380-69	GEORGE MCHAR 2636 SHADOW LK	SANTA ANA	CA	92705
892-380-70	EDWARD WHEEL 2632 SHADOW LK	SANTA ANA	CA	92705
892-380-71	LOUIS V & KAREI 2628 SHADOW LK	SANTA ANA	CA	92701
892-380-72	DAVID & ROBER 2624 SHADOW LK	SANTA ANA	CA	92705
892-380-73	LEVY FAMILY TRI 2620 SHADOW LK	SANTA ANA	CA	92705
892-380-74	LOCY FAMILY TR 2616 SHADOW LK	SANTA ANA	CA	92705
892-380-75	JAMES B & AUDI 2612 SHADOW LK	SANTA ANA	CA	92705
892-380-76	TOBIN LIVING TF 1602 PATTIZ AVE	LONG BEACH	CA	90815
892-380-76	RESIDENT 2608 SHADOW LK	SANTA ANA	CA	92705
892-380-77	ROBERT E CARL , 1613 KNOLL LK	SANTA ANA	CA	92705
892-380-78	DEBRA BIRINYI 1609 KNOLL LK	SANTA ANA	CA	92701
892-380-79	MICHAEL PASCH 1521 KNOLL LK	SANTA ANA	CA	92705
892-380-80	KENNETH BRUCE 1517 KNOLL LK	SANTA ANA	CA	92705
892-380-81	ELDEN & MAVIS 1520 KNOLL LK	SANTA ANA	CA	92705
892-380-82	CROSBY FAMILY 1524 KNOLL LK	SANTA ANA	CA	92705
892-380-83	HAROLD DELONC PO BOX 336	ORANGE	CA	92856
892-380-83	RESIDENT 1528 KNOLL LK	SANTA ANA	CA	92705
892-380-84	ADRIAN & LAUR 1600 KNOLL LK	SANTA ANA	CA	92705
892-380-85	DOUGLAS HORW 1604 KNOLL LK	SANTA ANA	CA	92705
892-380-86	FAMILY TRUST S 1608 KNOLL LK	SANTA ANA	CA	92705
892-380-87	JOAN C KAUL 2605 SHADOW LK	SANTA ANA	CA	92705
892-380-88	MARGARET E HE 2609 SHADOW LK	SANTA ANA	CA	92705
892-380-89	FOUQUETTE FAM 2613 SHADOW LK	SANTA ANA	CA	92705
892-380-90	KATHLEEN M ELI 2617 SHADOW LK	SANTA ANA	CA	92705

892-380-91	CYNTHIA A ROBE	2621 SHADOW LK	SANTA ANA	CA	92705
892-380-92	GENE M SOKOLS	2625 SHADOW LK	SANTA ANA	CA	92705
892-380-93	DIXIE SHEDWILL	2629 SHADOW LK	SANTA ANA	CA	92705
892-380-94	WILLIAM SEAN V	2633 SHADOW LK	SANTA ANA	CA	92705
892-380-95	FRED & PATRICI	2637 SHADOW LK	SANTA ANA	CA	92705
892-380-96	JUDITH M CAMP	2636 PARK LK	SANTA ANA	CA	92705
892-380-97	MELINDA LYDON	2632 PARK LK	SANTA ANA	CA	92705
892-380-98	HANN FAMILY TI	2628 PARK LK	SANTA ANA	CA	92705
892-380-99	DENISE MARIE T	2624 PARK LK	SANTA ANA	CA	92705
892-381-00	DARREL L & MIL	2620 PARK LK	SANTA ANA	CA	92701
892-381-01	KATHLEEN BLAK	2616 PARK LK	SANTA ANA	CA	92705
892-381-02	JEANNE LYNN SI	2612 PARK LK	SANTA ANA	CA	92705
892-381-03	HENRY HAMILTC	2608 PARK LK	SANTA ANA	CA	92705
892-381-04	DALE & PATRICI	2544 PARK LK	SANTA ANA	CA	92705
892-381-05	BRENDA M ROW	2540 PARK LK	SANTA ANA	CA	92705
892-381-06	SUSAN V JONES	2536 PARK LK	SANTA ANA	CA	92705
892-381-07	JANET NORRIS R	2532 PARK LK	SANTA ANA	CA	92705
892-381-08	WAYNE LLOYD &	2528 PARK LK	SANTA ANA	CA	92705
892-381-09	HUNT, HAROLD	2524 PARK LK	SANTA ANA	CA	92705
892-381-10	PATRICIA K KELL	2520 PARK LK	SANTA ANA	CA	92701
892-381-11	BETTY CORNELL	2516 PARK LK	SANTA ANA	CA	92705
892-381-12	ELAINE S MUNO	2512 PARK LK	SANTA ANA	CA	92705
892-381-13	NANCY WORLEY	2508 PARK LK	SANTA ANA	CA	92703
892-381-14	LYNN M DAHNKI	2504 PARK LK	SANTA ANA	CA	92705
892-381-15	CHARLES M & JE	2500 PARK LK	SANTA ANA	CA	92705
892-381-16	NGUYEN D UON	1621 CANYON LK	SANTA ANA	CA	92705
892-381-17	GARY R & CAROI	2505 SHADOW LK	SANTA ANA	CA	92705
892-381-18	LOGAN R GIESIE	2509 SHADOW LK	SANTA ANA	CA	92705
892-381-19	JUDITH LYNN RE	2513 SHADOW LK	SANTA ANA	CA	92701
892-381-20	MERYL J BENJAN	2517 SHADOW LK	SANTA ANA	CA	92705
892-381-21	NANCY RUTH CC	2521 SHADOW LK	SANTA ANA	CA	92705
892-381-22	REED FAMILY TR	2525 SHADOW LK	SANTA ANA	CA	92705
892-381-23	DELBERT E & SAI	2529 SHADOW LK	SANTA ANA	CA	92705
892-381-24	PHYLLIS ANNE M	2533 SHADOW LK	SANTA ANA	CA	92705
892-381-25	ELVERA L HALL	2537 SHADOW LK	SANTA ANA	CA	92705
892-381-26	JOHN F & ELIZAE	2541 SHADOW LK	SANTA ANA	CA	92701
892-381-27	LLOYD A & MARI	2545 SHADOW LK	SANTA ANA	CA	92705
892-381-28	DONALD H MILL	2536 SHADOW LK	SANTA ANA	CA	92705
892-381-29	MARTHA JANE P	18621 AUBURN AVE	SANTA ANA	CA	92705
892-381-29	RESIDENT	2532 SHADOW LK	SANTA ANA	CA	92705
892-381-30	KENT LIVING TR	2528 SHADOW LK	SANTA ANA	CA	92701
892-381-31	PHILLIP E & CARI	2524 SHADOW LK	SANTA ANA	CA	92705
892-381-32	ROBERTA BAYRF	2520 SHADOW LK	SANTA ANA	CA	92705
892-381-33	TUDOR FAMILY	2516 SHADOW LK	SANTA ANA	CA	92705
892-381-34	TOPP FAMILY TR	2512 SHADOW LK	SANTA ANA	CA	92705
892-381-36	JERRY ANN PYLE	1613 CANYON LK	SANTA ANA	CA	92705
892-381-37	LORRIE A GRIFFI	1609 CANYON LK	SANTA ANA	CA	92705

892-381-38	STEWART FAMIL 1605 CANYON LK	SANTA ANA	CA	92705
892-381-39	ROBERT ARTHUF 1601 CANYON LK	SANTA ANA	CA	92705
892-381-40	JEAN S HOLDER 1529 CANYON LK	SANTA ANA	CA	92705
892-381-41	SATURDAY TRUS 1525 CANYON LK	SANTA ANA	CA	92705
892-381-42	PATRICIA LEE WI 1521 CANYON LK	SANTA ANA	CA	92703
892-381-44	MONICA A TERR 2509 VIEW LK	SANTA ANA	CA	92705
892-381-45	PILCHER TRUST 2513 VIEW LK	SANTA ANA	CA	92705
892-381-46	ERUSTON CORP PO BOX 4008	ORANGE	CA	92863
892-381-46	RESIDENT 2517 VIEW LK	SANTA ANA	CA	92705
892-381-47	RETHA JEAN NOI 2521 VIEW LK	SANTA ANA	CA	92705
892-381-48	MICHAEL MANE 2525 VIEW LK	SANTA ANA	CA	92705
892-381-49	CAREY LEE BAILE 2529 VIEW LK	SANTA ANA	CA	92705
892-381-51	CHRISTINE A CHI 2544 VIEW LK	SANTA ANA	CA	92705
892-381-52	MARTIN EDWAR 2540 VIEW LK	SANTA ANA	CA	92705
892-381-53	STROTHER 2536 VIEW LK	SANTA ANA	CA	92705
892-381-54	CAROL I BREEDIN 2532 VIEW LK	SANTA ANA	CA	92705
892-381-55	MICHAEL P & DC 2528 VIEW LK	SANTA ANA	CA	92705
892-381-56	KEVIN & CINDY \ 2524 VIEW LK	SANTA ANA	CA	92705
892-381-57	DEBORAH KAY & 2520 VIEW LK	SANTA ANA	CA	92701
892-381-58	DOYLE KA 2516 VIEW LK	SANTA ANA	CA	92705
892-381-59	BRYAN L ROGER 2512 VIEW LK	SANTA ANA	CA	92705
892-381-60	DALE THORNE 2508 VIEW LK	SANTA ANA	CA	92705
892-381-61	THOMAS & PATF 2504 VIEW LK	SANTA ANA	CA	92705
892-381-62	ROBERT D & SAM 2500 VIEW LK	SANTA ANA	CA	92705
892-381-63	FUEHRER FAMIL 1500 CANYON LK	SANTA ANA	CA	92705
892-381-64	LINDA KATE MA 1504 CANYON LK	SANTA ANA	CA	92705
892-381-65	JOSEPH AUGUST 1508 CANYON LK	SANTA ANA	CA	92705
892-381-66	BRUCE & CAROL 1512 CANYON LK	SANTA ANA	CA	92705
892-381-67	RONALD L & JOE 1516 CANYON LK	SANTA ANA	CA	92705
892-381-68	HAGLER FAMILY 1520 CANYON LK	SANTA ANA	CA	92705
892-381-69	BETSY ROSS & LE 1524 CANYON LK	SANTA ANA	CA	92705
892-381-70	BURNES FAMILY 1528 CANYON LK	SANTA ANA	CA	92705
892-381-71	DEXTER FAMILY 1600 CANYON LK	SANTA ANA	CA	92705
892-381-72	JOHN T & KATHL 1604 CANYON LK	SANTA ANA	CA	92705
892-381-73	DONALD H & JAI 2321 E 4TH ST # C603	SANTA ANA	CA	92705
892-381-73	RESIDENT 1608 CANYON LK	SANTA ANA	CA	92705
892-381-74	JEFFREY ALAN H 1612 CANYON LK	SANTA ANA	CA	92705
892-381-75	RHODES FAMILY 1616 CANYON LK	SANTA ANA	CA	92705
892-381-76	SHARON TAYLOF 1620 CANYON LK	SANTA ANA	CA	92701
892-381-77	BOSSENMEYER F 1624 CANYON LK	SANTA ANA	CA	92705
892-381-78	DEAN FAMILY TF 1628 CANYON LK	SANTA ANA	CA	92705
892-381-79	WILCOX FAMILY 1632 CANYON LK	SANTA ANA	CA	92705
892-381-80	MATTHEWS TRU 2501 PARK LK	SANTA ANA	CA	92705
892-381-81	PATSY L SMITH 2505 PARK LK	SANTA ANA	CA	92705
892-381-82	KENNETH & SUS 2509 PARK LK	SANTA ANA	CA	92705
892-381-83	ROBERT WENDE 2513 PARK LK	SANTA ANA	CA	92705
892-381-84	LORI S. BOND 2517 PARK LK	SANTA ANA	CA	92705

892-381-85	LANGE J & JANIE 2521 PARK LK	SANTA ANA	CA	92705
892-381-86	CARL R BERGER 2525 PARK LK	SANTA ANA	CA	92705
892-381-87	HEATH REVOCAI 2529 PARK LK	SANTA ANA	CA	92705
892-381-88	DENNIS F & BEV 2533 PARK LK	SANTA ANA	CA	92701
892-381-89	CASEY STEKETEE 2537 PARK LK	SANTA ANA	CA	92705
892-381-90	LARRY L & EDITH 2541 PARK LK	SANTA ANA	CA	92705
892-381-91	MICKEY T & JEAN 2545 PARK LK	SANTA ANA	CA	92705
892-381-92	JANET C HUBER 2601 PARK LK	SANTA ANA	CA	92705
892-381-94	PHILIP WROBLE\ 2609 PARK LK	SANTA ANA	CA	92705
892-381-95	JERRY L VANIMA 727 E CHESTNUT AVE	ORANGE	CA	92867
892-381-95	RESIDENT 2613 PARK LK	SANTA ANA	CA	92705
892-381-96	BENO TRUST 2617 PARK LK	SANTA ANA	CA	92705
892-381-97	SHIRLEY B BURN 2621 PARK LK	SANTA ANA	CA	92705
892-381-98	ROBERT DON & 2625 PARK LK	SANTA ANA	CA	92705
892-381-99	DAVID B & PAUL 2629 PARK LK	SANTA ANA	CA	92705
892-382-00	SHIRLEY J CHARI 2633 PARK LK	SANTA ANA	CA	92705
892-382-01	DANIEL & KIMBE 603 PARKCENTER DR # 104	SANTA ANA	CA	92705
892-382-01	RESIDENT 2637 PARK LK	SANTA ANA	CA	92705
892-382-02	MARSHALL FAM 2641 PARK LK	SANTA ANA	CA	92705
892-382-03	CATHARINE L DE 1637 WOOD LK	SANTA ANA	CA	92705
892-382-04	MICHAEL & LIND 1633 WOOD LK	SANTA ANA	CA	92705
892-382-05	BURNS FAMILY T 1629 WOOD LK	SANTA ANA	CA	92705
892-382-06	PHILIP SHAWN 8 1625 WOOD LK	SANTA ANA	CA	92705
892-382-07	LUCAS FAMILY T 1621 WOOD LK	SANTA ANA	CA	92705
892-382-08	CARLENE MARIA 1617 WOOD LK	SANTA ANA	CA	92705
892-382-09	HOWELL LIVING 1613 WOOD LK	SANTA ANA	CA	92705
892-382-10	DONNA DOMIN(1609 WOOD LK	SANTA ANA	CA	92705
892-382-11	KENNETH & ROL 1605 WOOD LK	SANTA ANA	CA	92705
892-382-12	DANIELLE PAIGE 1601 WOOD LK	SANTA ANA	CA	92705