



Environmental Justice

In the City of Santa Ana General Plan

Artesia Pilar & Flower Park Neighborhood



**golden city
beyond**

A SHARED VISION FOR SANTA ANA



ENVIRONMENTAL JUSTICE
IN THE SANTA ANA GENERAL PLAN

Welcome



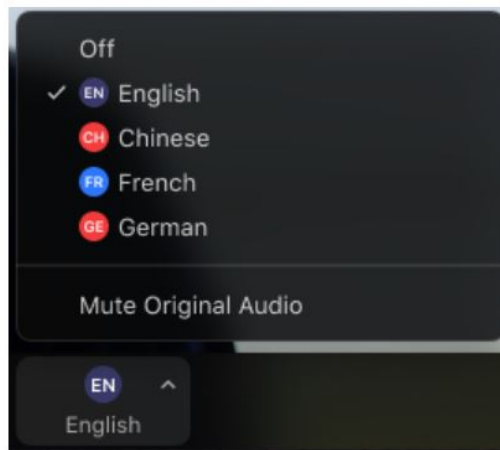
ENVIRONMENTAL JUSTICE IN THE SANTA ANA GENERAL PLAN

Interpretación en Español Disponible / Spanish &
Vietnamese Interpretation Available

1. In your meeting/webinar controls, click **Interpretation**.



2. Click the language that you would like to hear.



1) Haga Clic en el Círculo
2) Haga Clic en la Idioma
– Español



ENVIRONMENTAL JUSTICE
IN THE SANTA ANA GENERAL PLAN



City of Santa Ana Mayor
Vicente Sarmiento

American Rescue Plan Act of
2021 / Revive Santa Ana



ENVIRONMENTAL JUSTICE IN THE SANTA ANA GENERAL PLAN

American Rescue Plan Act of 2021-Revive Santa Ana

- Respond to public health emergency with respect to the COVID-19 or its negative economic impacts, including assistance programs
- Government services to the extent of reduction in revenue
- Necessary improvement in water, sewer, or broadband infrastructure

Revive Santa Ana

A Commitment to Protect and Assist our Community as we emerge from the impacts of the Pandemic

COVID-19 Recovery

- Efforts to address inequities of pandemic, outreach, testing, facilitation of vaccinations and education

Assistance Programs

- Financial relief to those most impacted including businesses, workers and residents

Public Health & Safety

- To enhance the provision of public health and safety services to our community

Critical Infrastructure

- Revitalize and enhance infrastructure/services to address community needs such as outreach, amenities, mobility and technology

City Fiscal Health

- Recover financial impacts of COVID-19 and restore staffing and programs

Funded by American Rescue Plan Act and other federal allocations

LEARN MORE & SHARE YOUR IDEAS



Website:

<https://www.santa-ana.org/revive-santa-ana>



E-Mail:

revive@santa-ana.org



Text:

(714) 805-8392



ENVIRONMENTAL JUSTICE
IN THE SANTA ANA GENERAL PLAN

Questions



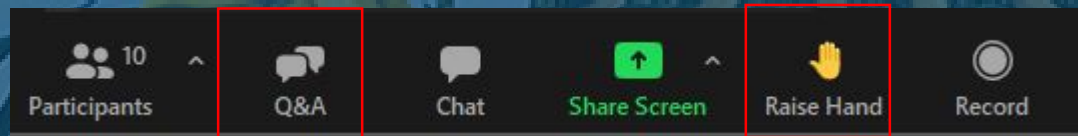
ENVIRONMENTAL JUSTICE

IN THE SANTA ANA GENERAL PLAN

Ways to Participate During the Meeting / *Formas de Participar Durante la Reunión*

There are two ways to participate in the meeting / *Hay dos formas de participar en la reunión:*

- **Raise Your Hand / *Levanta la Mano***
 - If you have a comment to make or want the organizers attention use this function. *Si tiene un comentario para hacer o desea la atención de los organizadores utiliza esta función.*
- **Ask a Question / *Hacer una Pregunta***
 - Type it in the Q & A box. *Escríbelo en el cuadro de Q & A.*





ENVIRONMENTAL JUSTICE IN THE SANTA ANA GENERAL PLAN

Ways to Participate if you are Dialing in / *Formas de Participar Si Usted Está por Teléfono*

If you are dialing in only press *9 to raise your hand and dial *6 to unmute to speak during the meeting.

*Si está marcando sólo oprime *9 para levantar la mano y marque *6 para desactivar el silencio para hablar durante la reunión*

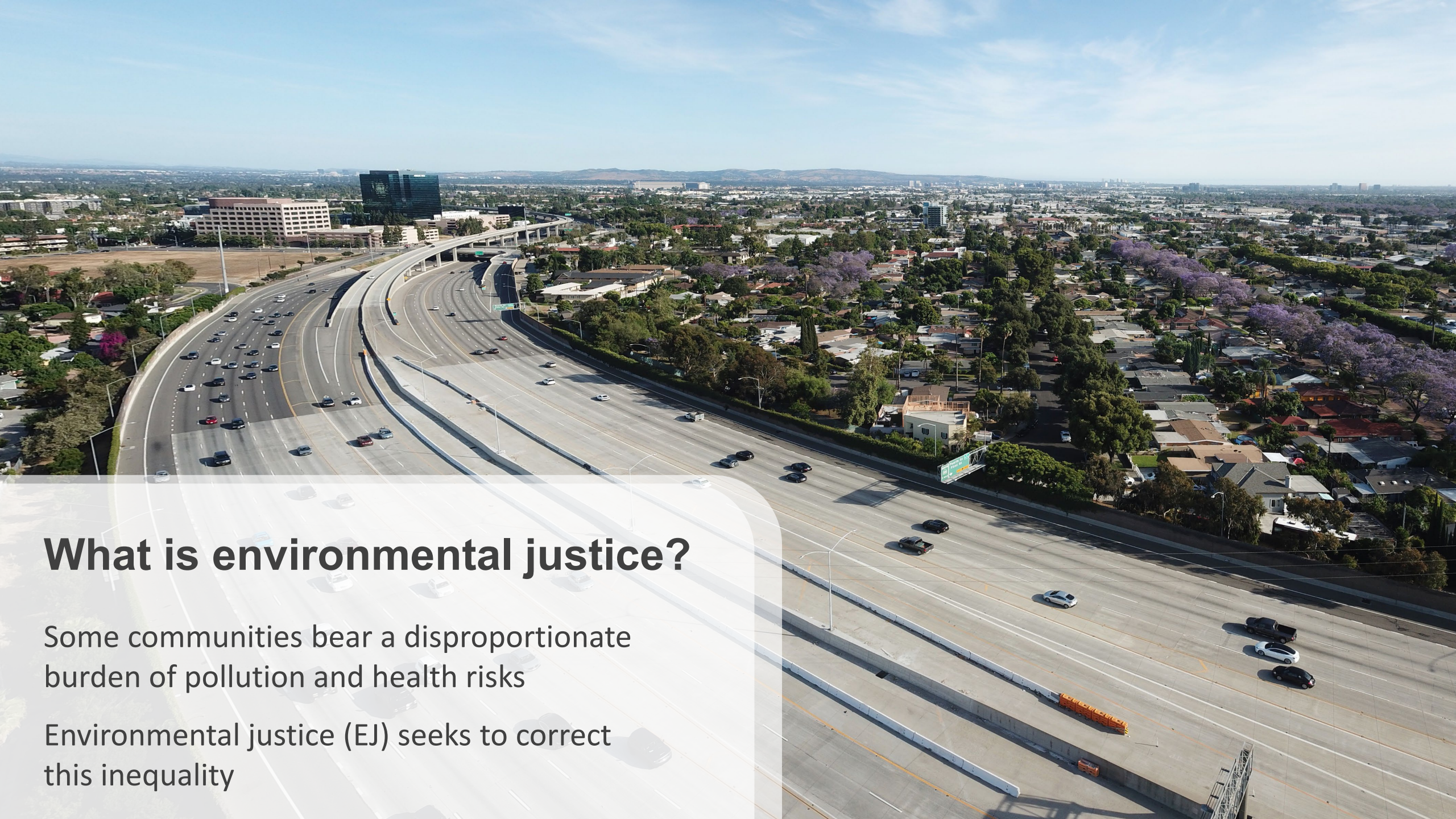


COMMUNITY OUTREACH

SANTA ANA GENERAL PLAN

EJ Neighborhood Meeting Agenda:

- What is Environmental Justice?
- Santa Ana General Plan Update
- What is an EJ Neighborhood?
- Community Discussions - LISTENING



What is environmental justice?

Some communities bear a disproportionate burden of pollution and health risks

Environmental justice (EJ) seeks to correct this inequality



GOLDEN CITY BEYOND: 2045

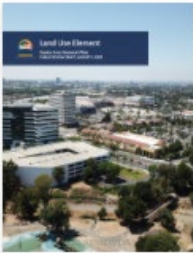
SANTA ANA GENERAL PLAN

Provides long-term policy direction to guide the physical development, quality of life, economic health, and sustainability of our Santa Ana community

Volume 3 – Built Environment

Volume 1 – Services and Infrastructure

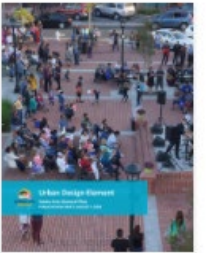
Volume 2 – Natural Environment



Land Use Element >



Historic Preservation Element >



Urban Design Element >



Community Element >



Circulation Element >



Economic Prosperity Element >



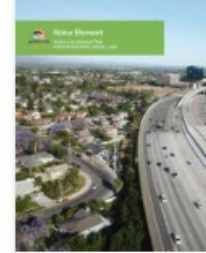
Public Services Element >



Conservation Element >



Open Space Element >



Noise Element >



Safety Element >



Planning for Healthy Communities Act (2016)

What does SB 1000 require?

Cities and counties to update public policies for disadvantaged communities in order to:

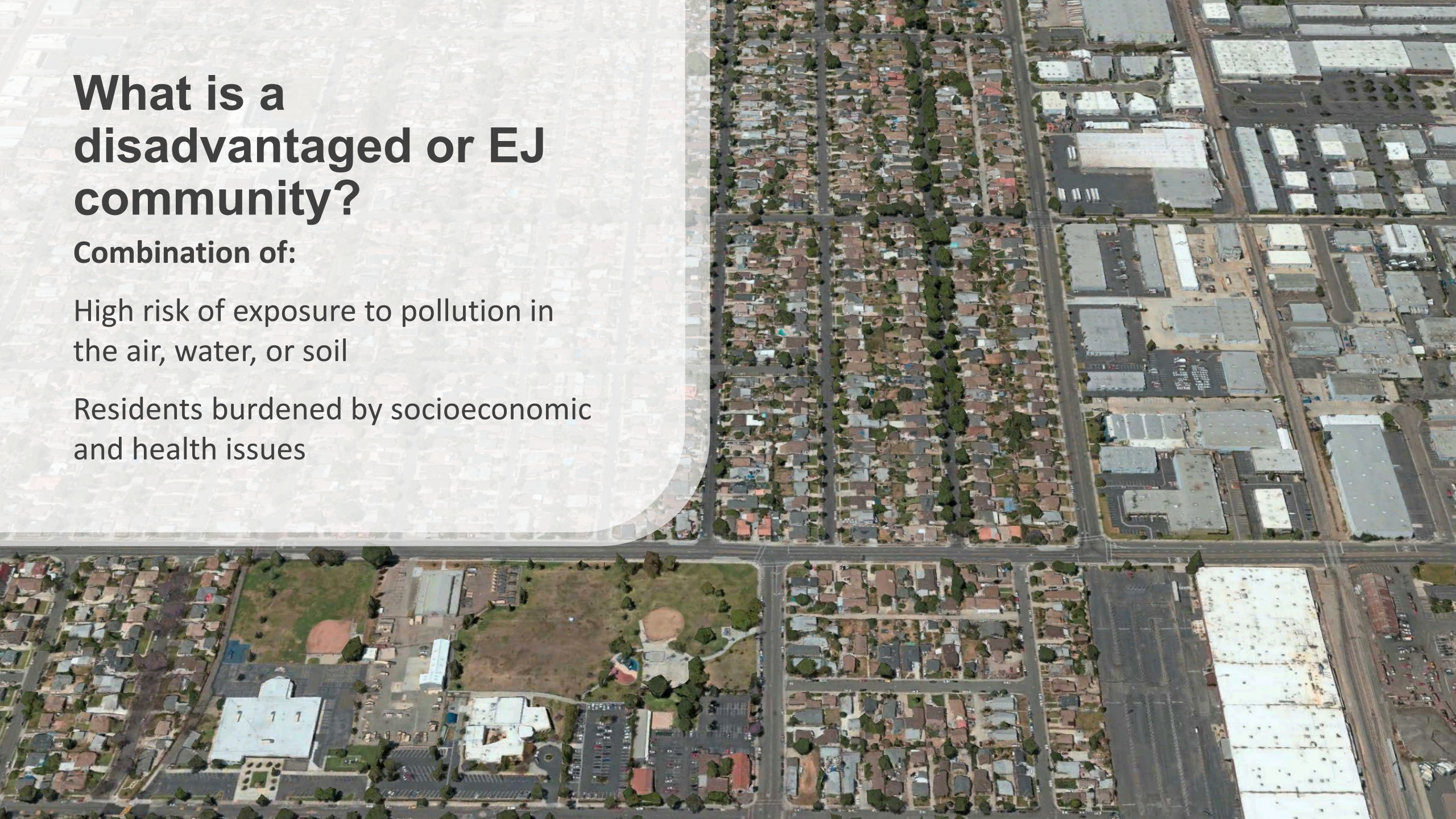
- Reduce unique or compounded health risks
- Promote civil engagement in the public decision-making process
- Prioritize improvements and programs

What is a disadvantaged or EJ community?

Combination of:

High risk of exposure to pollution in the air, water, or soil

Residents burdened by socioeconomic and health issues



What is a disadvantaged or EJ community?

Combination of:

High risk of exposure to pollution in the air, water, or soil

Residents burdened by socioeconomic and health issues

Located near freeways, major roads, and/or industrial uses



CES measures 20 indicators

Pollution Burden

Population Characteristics

Exposures

Environmental Effects

Sensitive Populations

Socioeconomic Factors



Ozone



PM2.5



Solid Waste Sites and Facilities



Cleanup Sites



Diesel Particulate Matter



Drinking Water Contaminants



Groundwater Threats



Impaired Water Bodies



Toxic Releases from Facilities



Traffic



Pesticide Use



Hazardous Waste Generators and Facilities



Asthma



Cardiovascular Disease



Low Birth Weight Infants



Educational Attainment



Housing Burdened Low Income Households



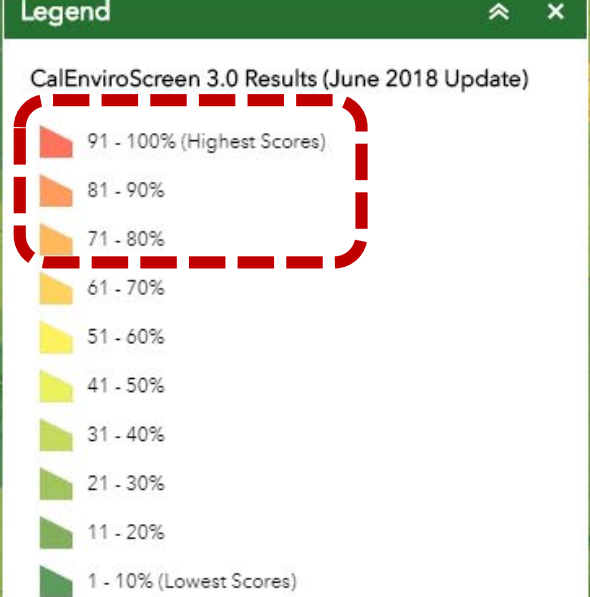
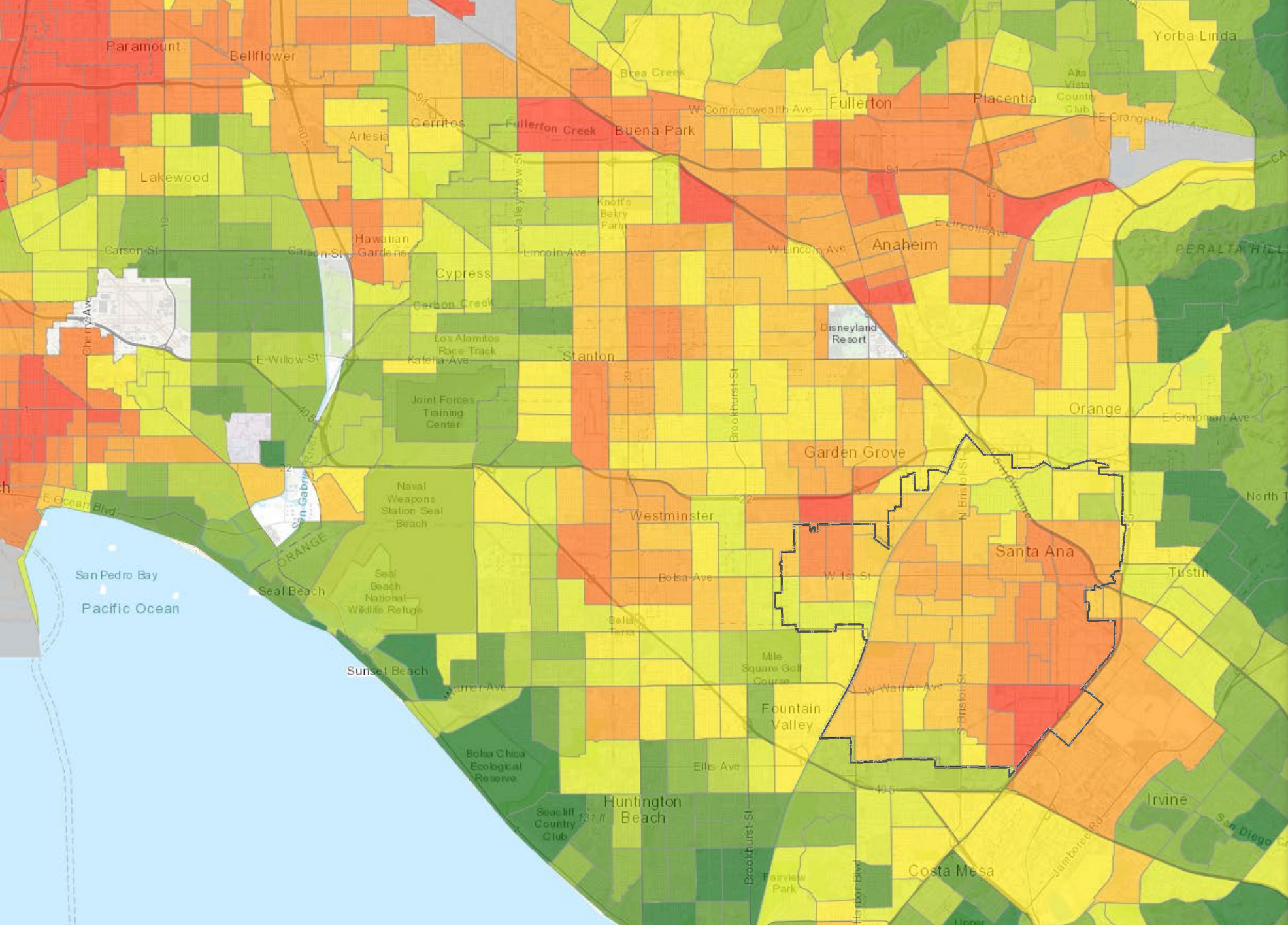
Linguistic Isolation



Poverty



Unemployment



Combined scores compared to identify lowest to highest burden

Tracts ranked from 75% to 100% are a disadvantaged or EJ community

Note: The City's approach is consistent with CalEPA methodology.

EJ communities in the City of Santa Ana

 EJ Communities

Main priorities:



Diesel Emissions



Air Quality



Groundwater Contamination



Cleanup Sites



Housing Burden



Linguistic Isolation



Low Birth Weight Infants



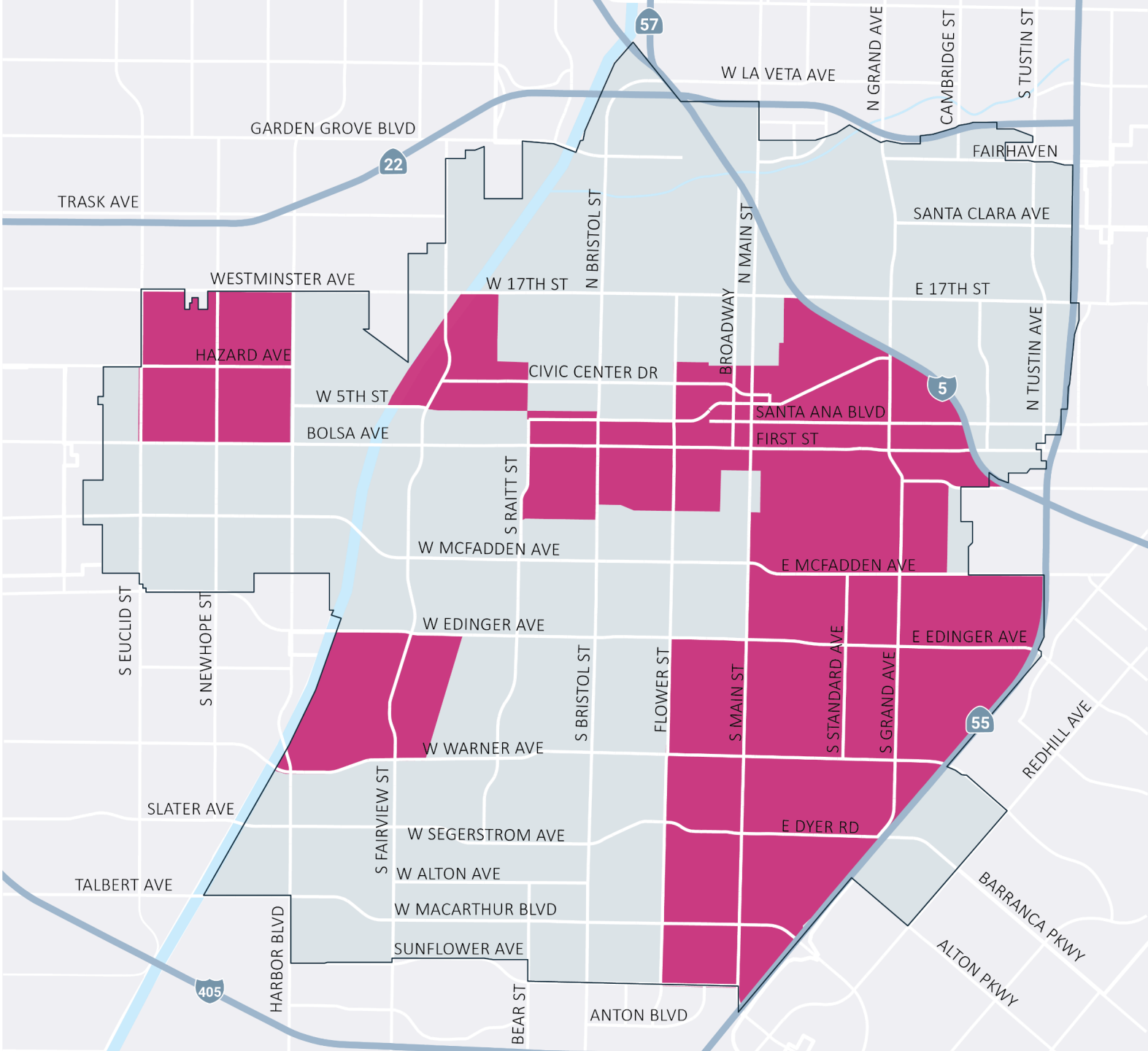
Solid Waste Sites



Poverty



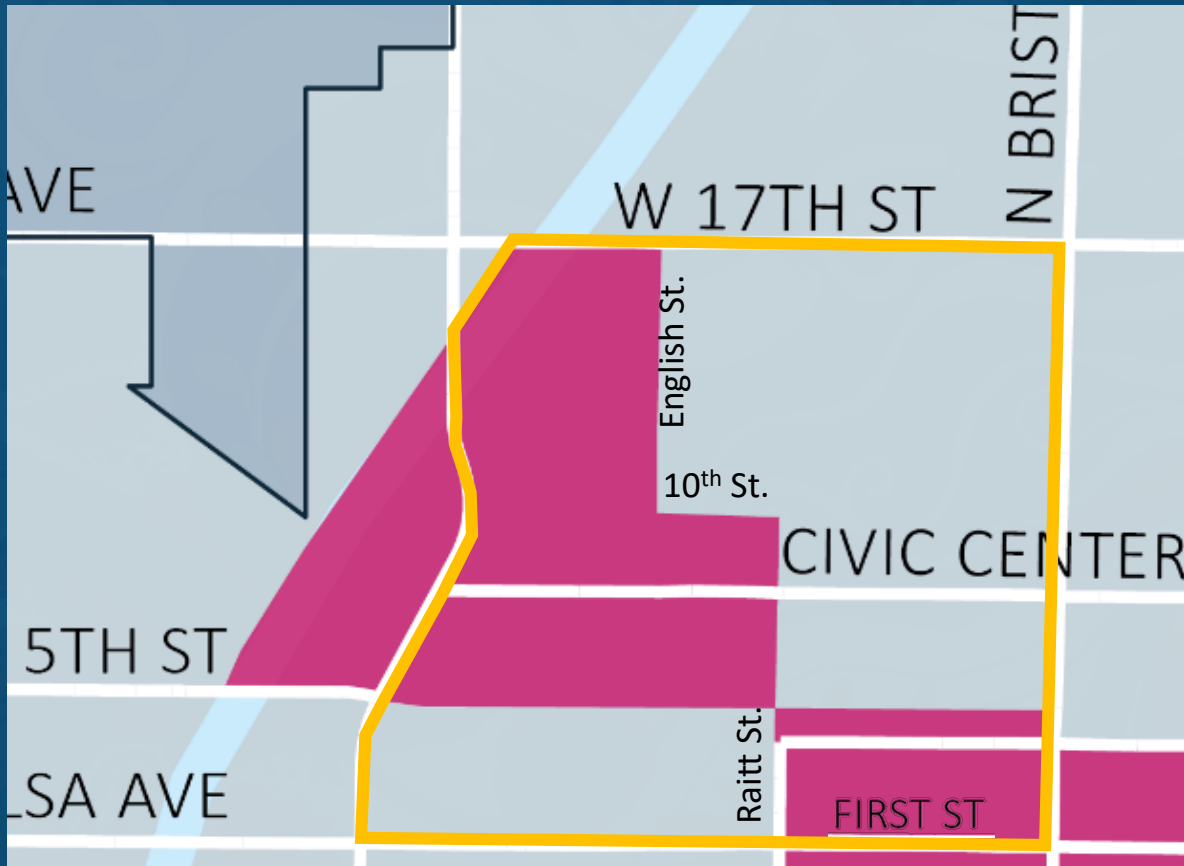
Education





ENVIRONMENTAL JUSTICE IN THE SANTA ANA GENERAL PLAN

Artesia Pilar



Flower Park



 EJ Community

 Neighborhood Boundary



ENVIRONMENTAL JUSTICE IN THE SANTA ANA GENERAL PLAN

The City is considering changes to its **goals, policies, and actions** that will improve existing and future conditions for all of Santa Ana, with a focus on those in greatest need of help and protection.



CULTURE

SUSTAINABILITY

HEALTH

EDUCATION

EQUITY



ENVIRONMENTAL JUSTICE IN THE SANTA ANA GENERAL PLAN

What are your priorities for your
Neighborhood?





Reducing exposure to pollution

Develop strategies and support regulations that will help reduce exposure to air pollution and hazardous materials.



A clear view of the mountains over Santa Ana
Photo courtesy of Lisandro Orozco

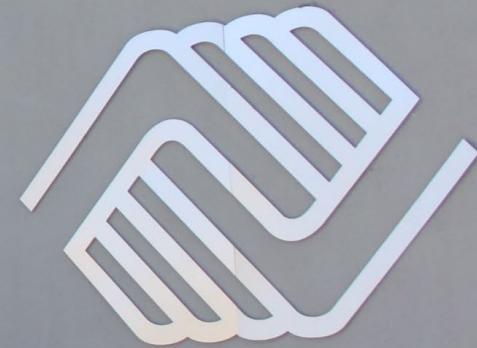


Improving public facilities

Increase access to community health facilities, parks, community centers, and other public services and facilities, particularly in underserved areas.

JOE MACPHERSON
CENTER FOR OPPORTUNITY

GREAT FUTURES START HERE



BOYS & GIRLS CLUB
OF SANTA ANA





Promoting healthy food



Improve the health and wellness of all residents through policies, regulations, and programs that foster healthier food options.



Creating safe and sanitary housing

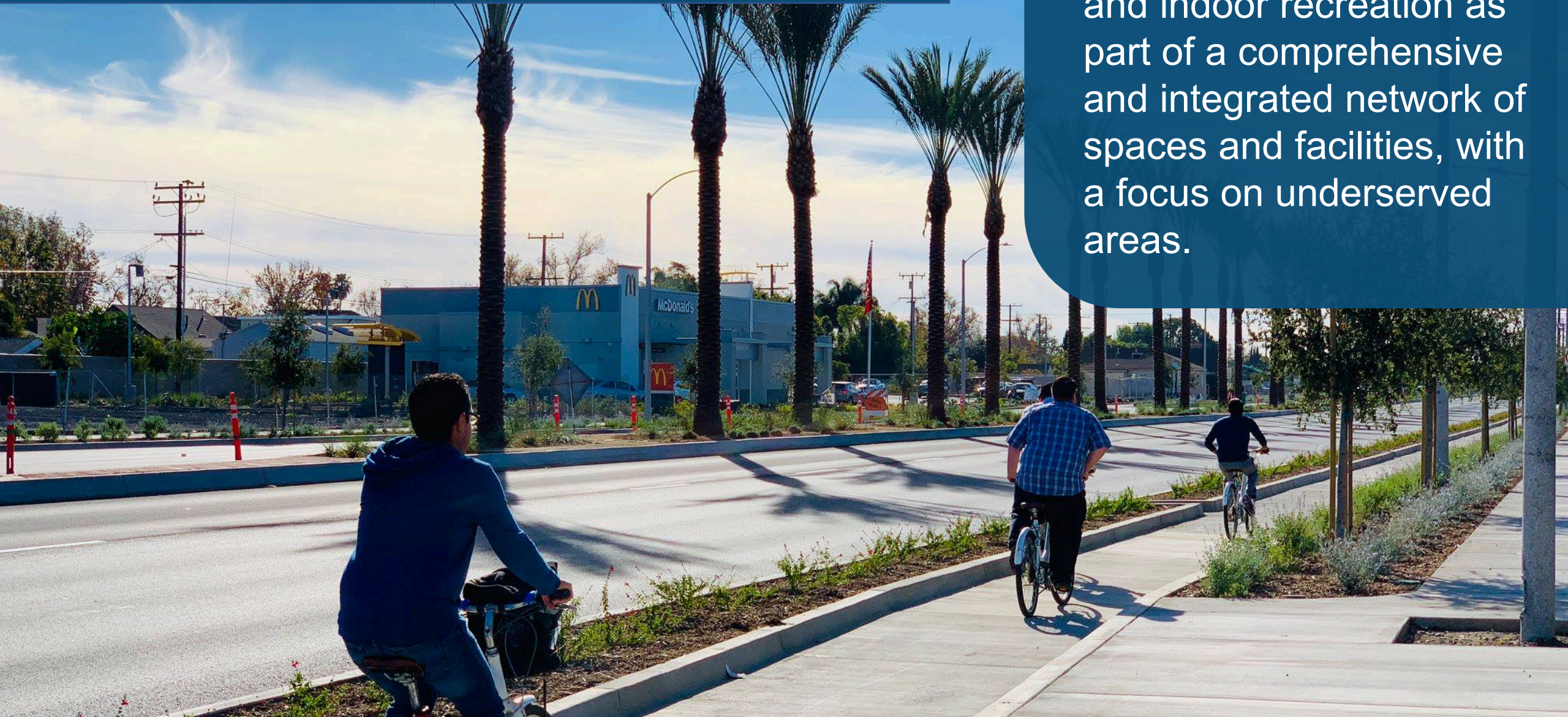


Add to existing efforts to reduce health hazards associated with construction materials, building standards, and deferred maintenance.



Increasing physical activity

Establish new opportunities for outdoor and indoor recreation as part of a comprehensive and integrated network of spaces and facilities, with a focus on underserved areas.





Enhancing civic engagement

Increase the amount and quality of community engagement throughout the planning, development, and operation of our communities and City.





COMMUNITY OUTREACH

IN THE SANTA ANA GENERAL PLAN

Tentative Timeline

- EJ Neighborhood Meetings & Survey - March to May 2021
- EJ Community Comments refine Draft General Plan document - Spring 2021
- Planning Commission Work Study - Spring 2021
- Revised General Plan EIR - Summer 2021
- General Plan Public Hearings - Late 2021

CULTURE

SUSTAINABILITY

HEALTH

EDUCATION

EQUITY



LEARN MORE & SHARE YOUR IDEAS



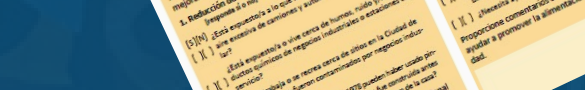
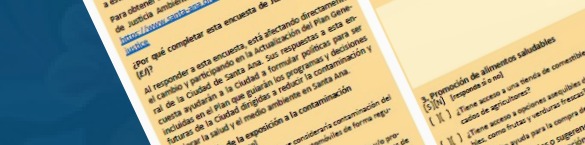
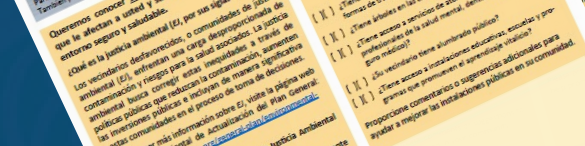
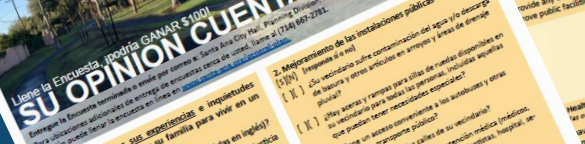
www.santa-ana.org/general-plan



newgeneralplan@santa-ana.org



(714) 667-2781





ENVIRONMENTAL JUSTICE
IN THE SANTA ANA GENERAL PLAN

THANK YOU!

**We look forward to continuing to build
a path toward a healthier and more
equitable Santa Ana.**